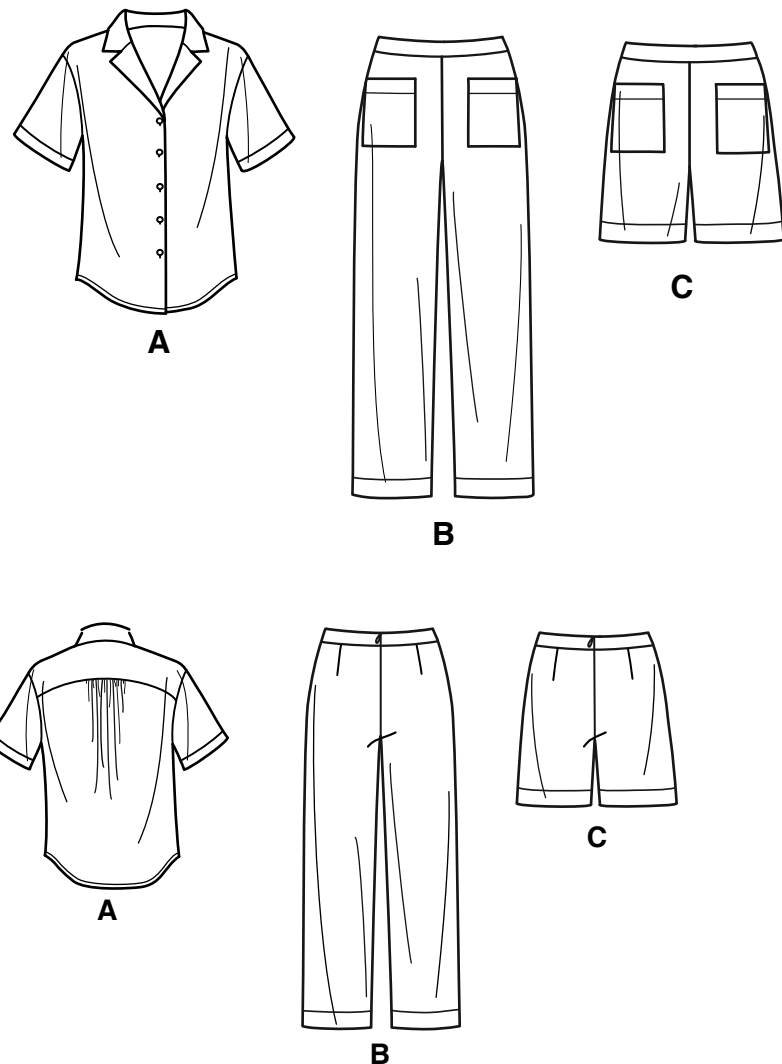


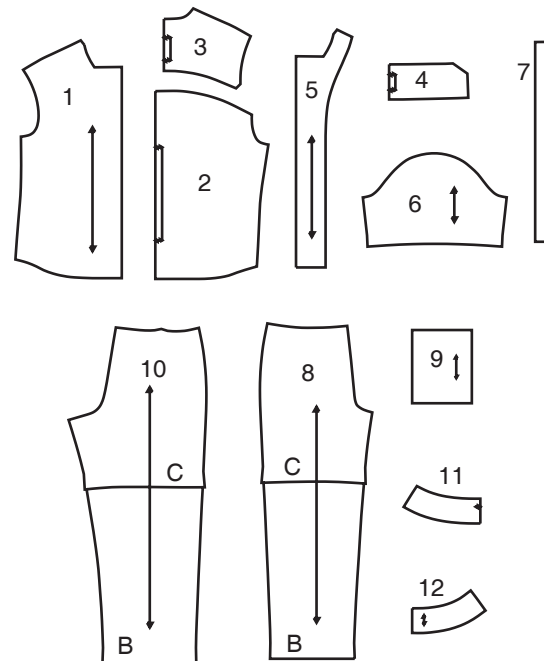
NEW LOOK® N6802

www.simplicity.com info@simplicity.com 1-888-588-2700

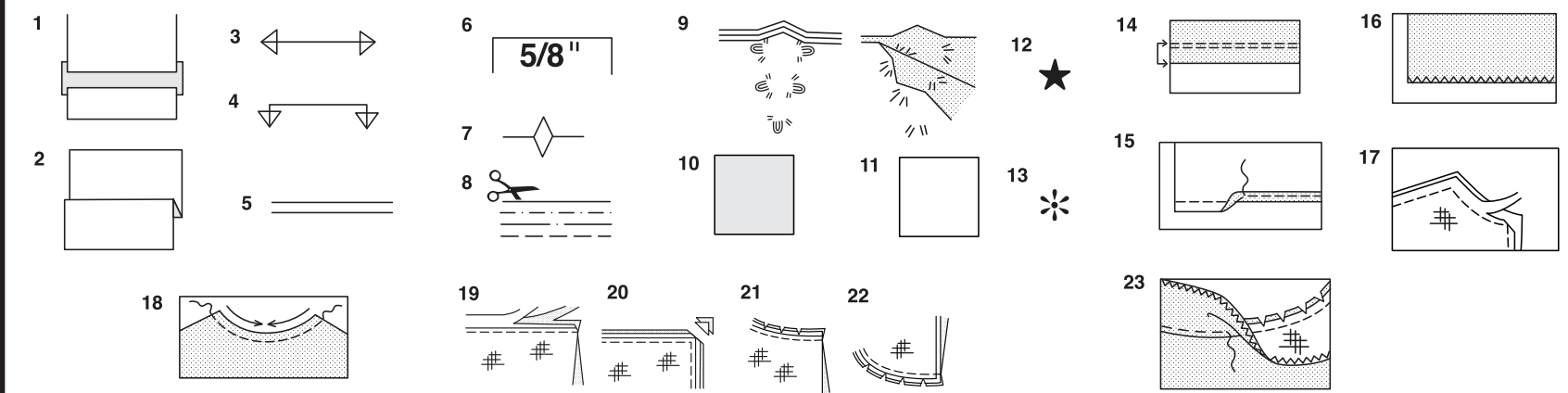
Thank you for purchasing this New Look pattern. We made every effort to provide you with a high quality product. Gracias por haber comprado este patrón de New Look. Hemos hecho todos los esfuerzos para ofrecerle un producto de alta calidad.



12 PIECES



- 1 FRONT - A
- 2 BACK - A
- 3 YOKE BACK - A
- 4 COLLAR - A
- 5 FRONT FACING - A
- 6 SLEEVE - A
- 7 BUTTONHOLE GUIDE - A
- 8 FRONT - B,C
- 9 POCKET - B,C
- 10 BACK - B,C
- 11 FRONT WAISTBAND - B,C
- 12 BACK WAISTBAND - B,C



How To Use Your Multi Size Pattern

First Prepare Your Pattern

- Select the pattern pieces according to the view you are making.
- This pattern is made to body measurements with ease allowed for comfort and style. If your body measurements differ from those on the pattern envelope adjust the pieces before placing them on the fabric.
- Check your back neck to waist and dress length, if necessary, alter the pattern. Lengthening and shortening lines are indicated.
- TO LENGTHEN** : Cut pattern between printed lines and place paper underneath. Spread pattern the required amount and pin to paper.
 - TO SHORTEN** : Fold at the printed lines to form a pleat half the amount to be shortened, ie 1/2" (1.3cm) deep to shorten 1" (2.5cm).

Study Your Pattern Markings

- STRAIGHT GRAIN** : Place an even distance from selvage or a straight thread.
- FOLD** : Place on fold of fabric.
- LENGTHENING AND SHORTENING LINES**.
- SEAM ALLOWANCE** : 5/8" (1.5cm) unless otherwise stated.
- NOTCHES** : Match notches.
- CUTTING LINES** : Multi patterns have different cutting lines for different sizes.
- TAILOR-TACKS** : With double thread make two loose stitches forming loop through fabric layers and pattern leaving long ends. Cut loop to remove pattern. Snip thread between fabric layers. Leave tufts.

Cutting Layouts

Cutting Directions

- FOR FOLDED AND DOUBLE LAYER FABRIC** - Place fabric with right side inside and pin pattern on wrong side of fabric.
- FOR SINGLE LAYER** - Pin pattern on right side of fabric.
- NOTE: Pattern pieces may interlock more closely for smaller sizes. Cut notches out from cutting line.
- BEFORE removing pattern from fabric, transfer all pattern markings using tailor tacks or dressmaking tracing paper.
- KEY: pattern printed side down
 - KEY: pattern printed side up
 - KEY: Cut out all pieces except pieces that extend beyond folded fabric, then open out fabric and on RIGHT side of fabric, cut in positions as shown.
 - KEY: For with and without nap layouts ensure fabric is placed with nap or design running in same direction.

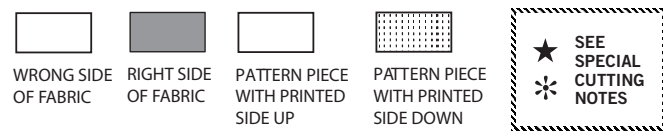
Before pinning to fabric, press tissue pattern with a warm dry iron to remove creases.

Sewing Directions

- | Fabric Key | Right Side | Wrong Side | Interfacing | Lining |
|------------|------------|------------|-------------|--------|
| | | | | |
- Sew garment following **Sewing Directions**.
- PIN** or machine-baste seams matching notches.
- STITCH** 5/8" (1.5cm) seams unless otherwise stated.
- PRESS** seams open unless otherwise indicated, clipping when necessary so seams will lie flat.

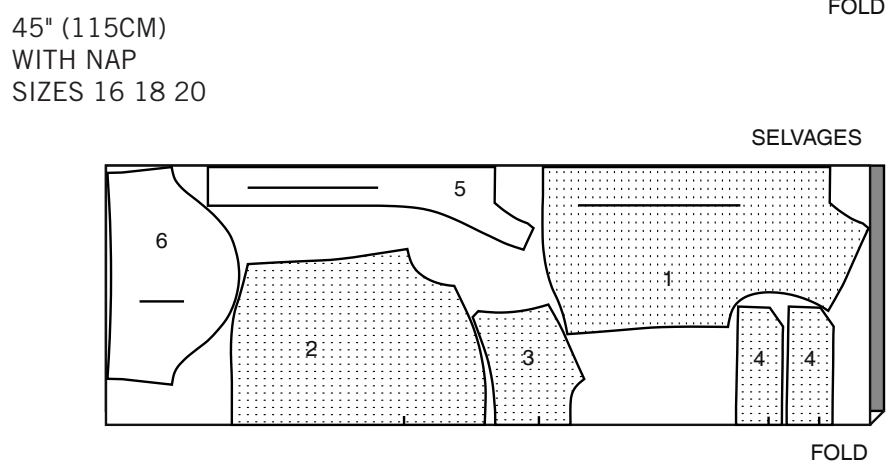
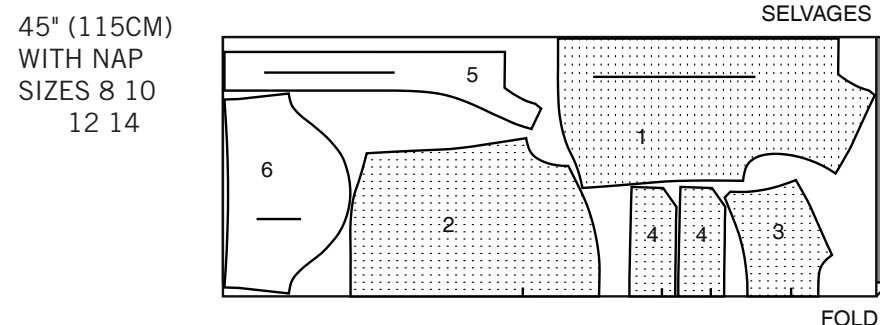
- EASE-STITCH** or **GATHER** - Loosen needle tension slightly. With RIGHT side up, stitch 5/8" (1.5cm) from cut edge using a long stitch. Stitch again 1/4" (6mm) away in the seam allowance.
- EDGE FINISH** - Neaten raw edges of seams, hems and facings using one of the following methods.
 - Stitch 1/4" (6mm) from edge, turn under along stitching and stitch.
 - Zig-zag or overlock raw edges.
- INTERFACING** — Pin interfacing to WRONG side of fabric. Cut across corners that will be enclosed with seams. Machine-baste 1/2" (1.3cm) from cut edge. (Shown only on first illustration). Trim interfacing close to machine-basting. For FUSIBLE interfacing, follow manufacturer's directions.
- STAY-STITCH** —Stitch 1/2" (1.3cm) from cut edge, in direction of arrows: (Shown only in the first illustration).
- LAYERING** — Trim seam allowance in layers.
 - Layer enclosed seams
 - Trim corners
 - Clip inner curves
 - Notch outer curves
- UNDERSTITCH** —Press facing away from garment; press seam toward facing. Facing side up, understitch close to seam through facing and seam allowances.

Cutting Layouts

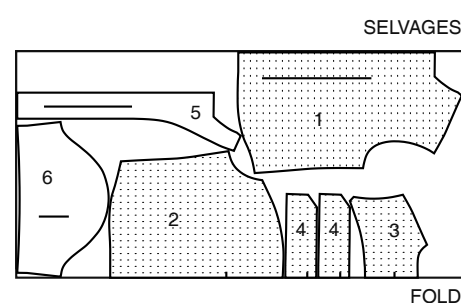


SHIRT A

USE PIECES 1 2 3 4 5 6



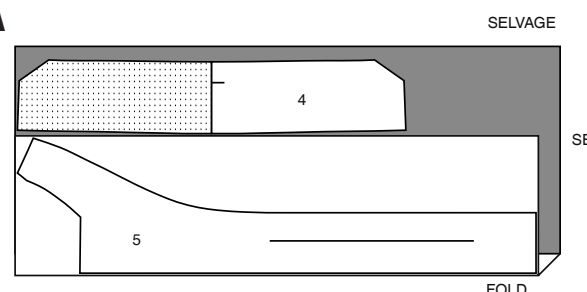
60" (150CM) WITH NAP ALL SIZES



INTERFACING A

USE PIECES 4 5

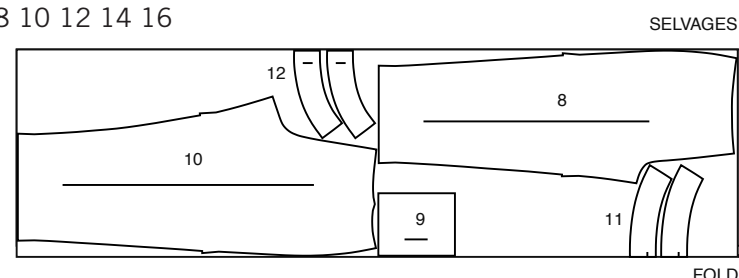
20" (51CM) ALL SIZES



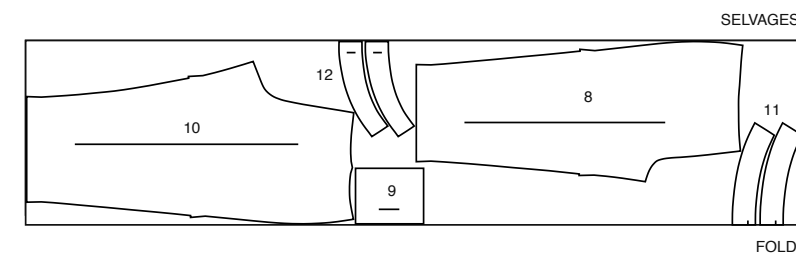
PANTS B

USE PIECES 8 9 10 11 12

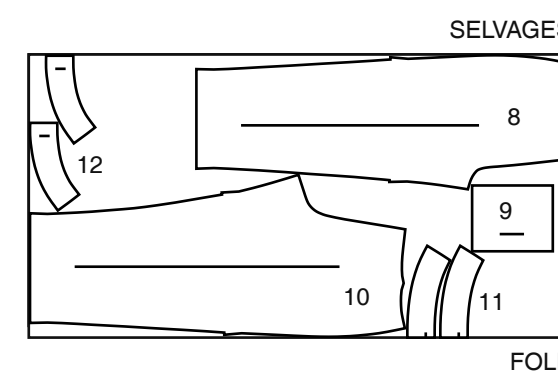
45" (115CM) WITH NAP SIZES 6 8 10 12 14 16



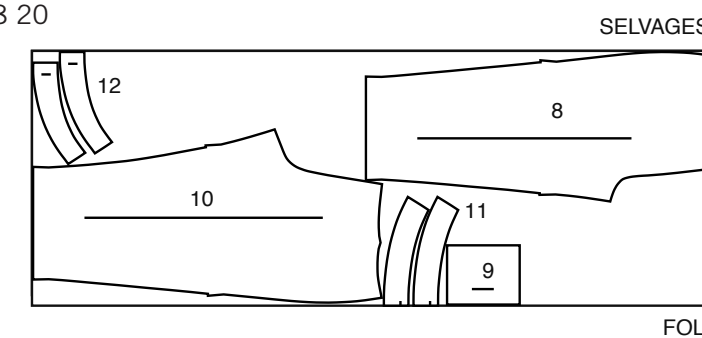
45" (115CM) WITH NAP SIZES 18 20



60" (150CM) WITH NAP SIZES 8 10 12 14



60" (150CM) WITH NAP SIZES 16 18 20



Español

CAMISA A

USE LAS PIEZAS 1 2 3 4 5 6

- 45" (115CM) CON PELUSA TALLAS 8 10 12 14
- 45" (115CM) CON PELUSA TALLAS 16 18 20
- 60" (150CM) CON PELUSA TODAS LAS TALLAS

ENTRETELA A

USE LAS PIEZAS 4 5

20" (51CM) TODAS LAS TALLAS

PANTALONES B

USE LAS PIEZAS 8 9 10 11 12

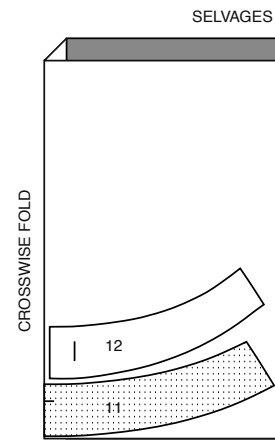
- 45" (115CM) CON PELUSA TALLAS 6 8 10 12 14 16
- 45" (115CM) CON PELUSA TALLAS 18 20
- 60" (150CM) CON PELUSA TALLAS 8 10 12 14
- 60" (150CM) CON PELUSA TALLAS 16 18 20

SELVAGES= ORILLAS
FOLD= DOBLEZ

INTERFACING B,C

USE PIECES 11 12

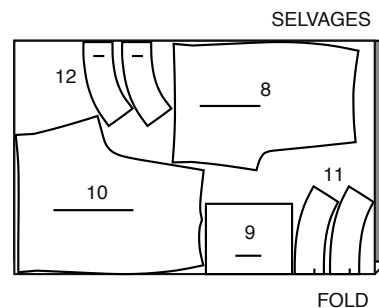
20" (51CM)
ALL SIZES



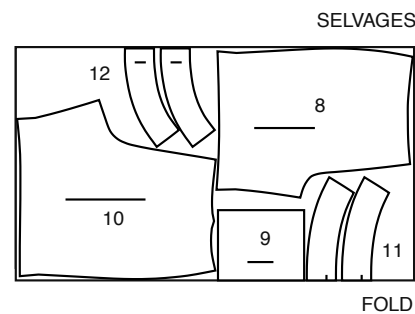
SHORTS C

USE PIECES 8 9 10 11 12

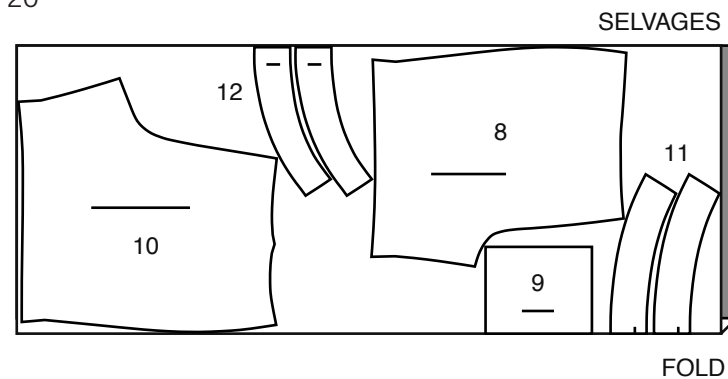
45" (115CM)
WITH NAP
SIZE 8



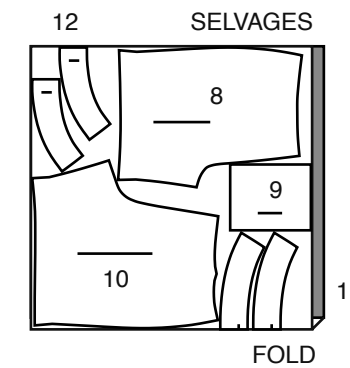
45" (115CM)
WITH NAP
SIZES 10 12 14 16



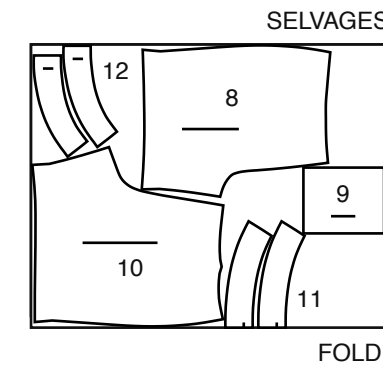
45" (115CM)
WITH NAP
SIZES 18 20



60" (150CM)
WITH NAP
SIZES 8 10 12 14 16



60" (150CM)
WITH NAP
SIZES 18 20



ENTRETELA B,C

USE LAS PIEZAS 11 12

20" (51CM) TODAS LAS TALLAS

SHORTS C

USE LAS PIEZAS 8 9 10 11 12

45" (115CM) CON PELUSA
TALLA 8

45" (115CM) CON PELUSA
TALLAS 10 12 14 16

45" (115CM) CON PELUSA
TALLAS 18 20

60" (150CM) CON PELUSA
TALLAS 8 10 12 14 16

60" (150CM) CON PELUSA
TALLAS 18 20

GLOSSARY OF SEWING METHODS

Sewing methods shown in *ITALICS* are defined below:

DART- To make dart, with **RIGHT** sides together, fold the fabric through the center of the dart, bringing broken lines and small dots together. On **INSIDE**, place pins at **RIGHT** angles to the broken lines. Stitch the dart from wide end to point.

TIP- To prevent a "bubble" at the point, make the last few stitches right on the fold and leave the thread ends long enough to tie a knot. **DO NOT** back-stitch at the point.

Press the dart flat along the stitching to "blend" the stitches, then press dart as indicated in the Sewing Directions.

GATHER - Loosen needle tension slightly. With **RIGHT** side up, stitch along seam line using a long stitch. Stitch again 1/4"(6mm) from the first stitching within the seam allowance.

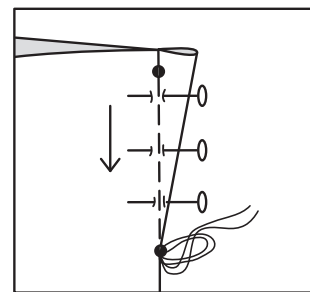
EDGE FINISH- Stitch 1/4"(6mm) from edge, turn under edge along stitching and stitch or zig-zag, or overlock/serge raw edges.

INTERFACING- Pin interfacing to **WRONG** side of fabric. Fuse interfacing in place following manufacturer's directions.

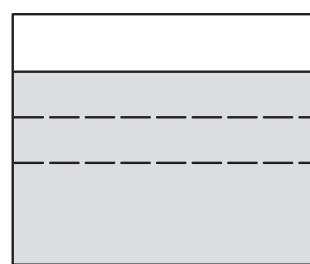
NARROW HEM- Press under hem allowance as indicated on tissue pattern. To form narrow hem, tuck under raw edge to meet crease. Press. Stitch hem in place.

STAY-STITCH- Stitch 1/2"(1.3cm) from cut edge in direction of arrows. This stitching stays in permanently to prevent stretching on curved edges. (Shown only in the first illustration.)

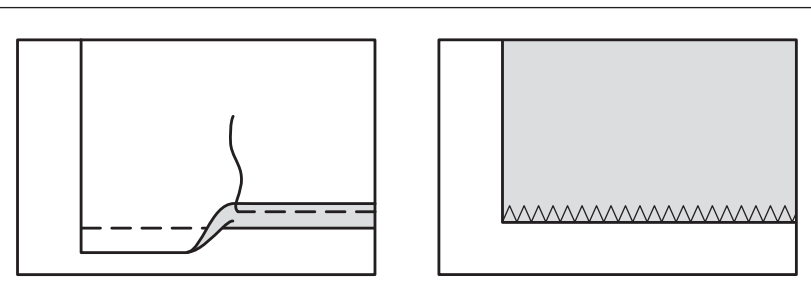
UNDERSTITCH- Press facing and seam away from garment, stitching through facing and seam allowances close to seam.



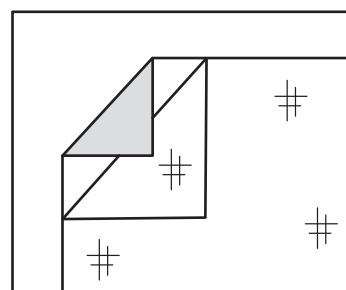
DART



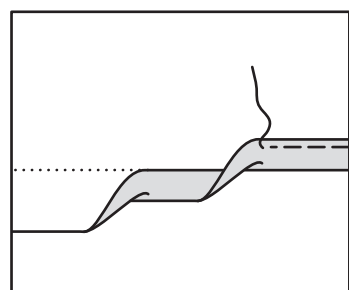
GATHER



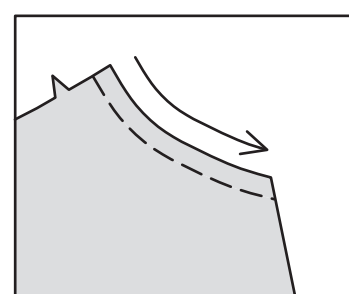
EDGE FINISH



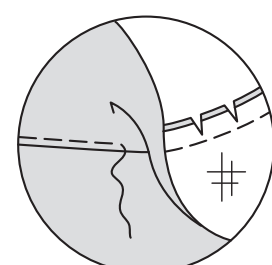
INTERFACING



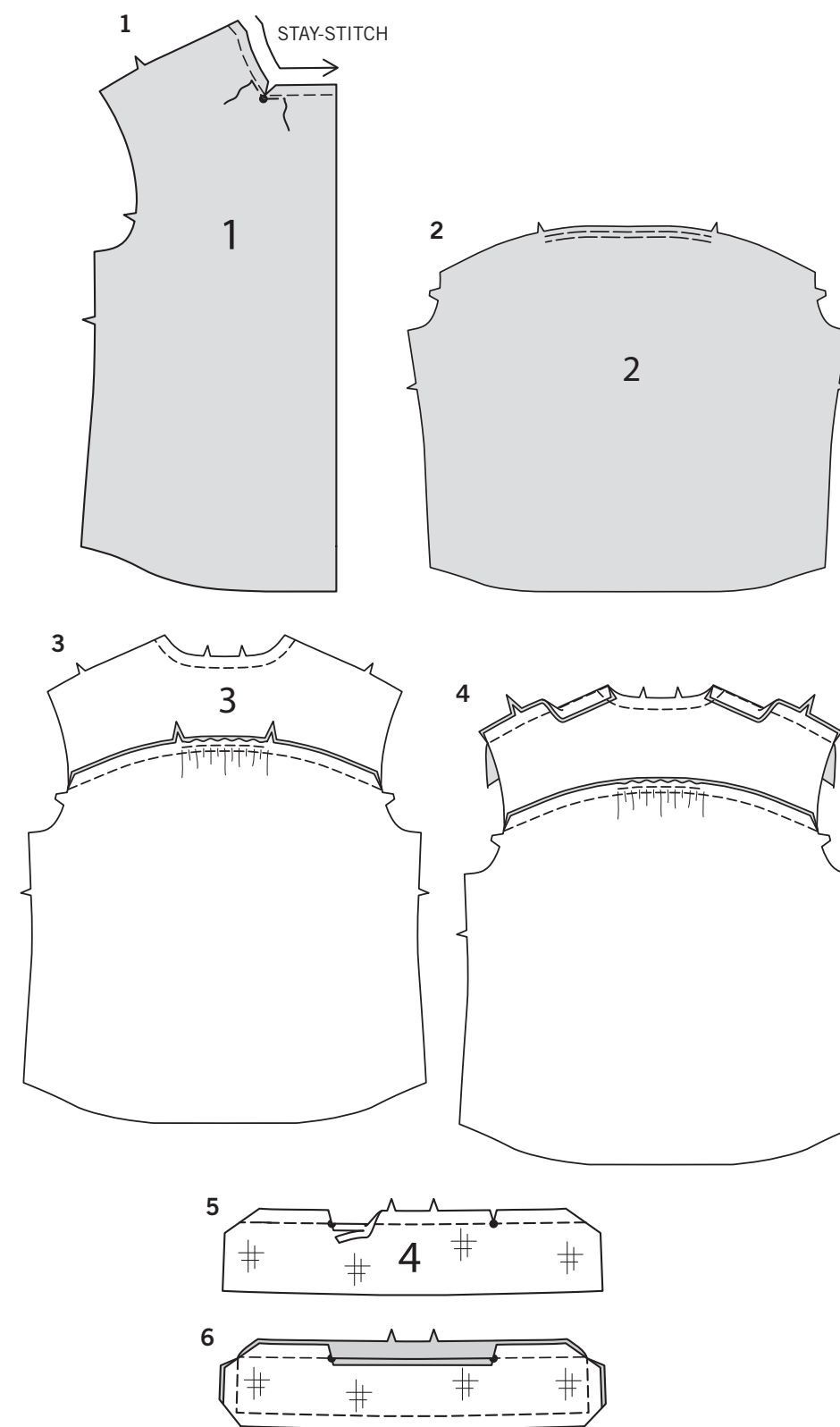
NARROW HEM



STAY-STITCH



UNDERSTITCH



PATTERN PIECES WILL BE IDENTIFIED BY NUMBERS THE FIRST TIME THEY ARE USED.

STITCH SEAMS WITH RIGHT SIDES TOGETHER UNLESS OTHERWISE STATED.

TOP A

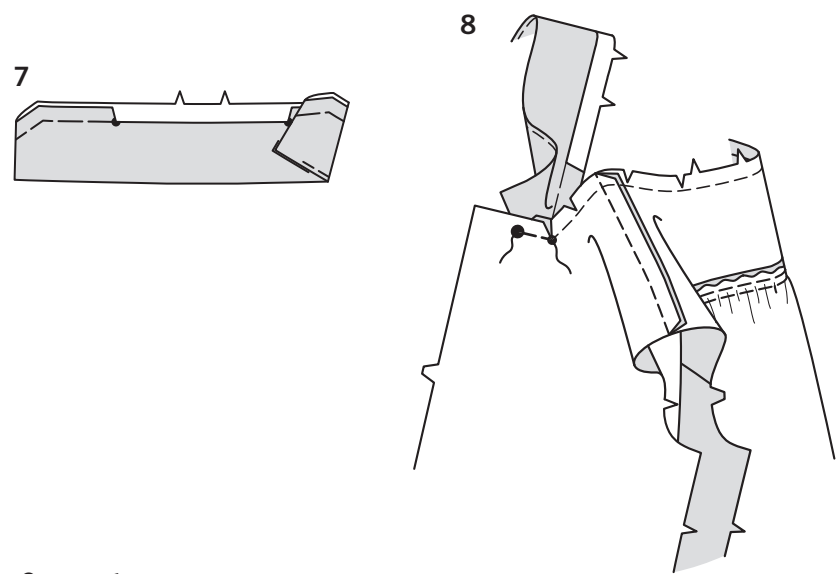
- 1. STAY-STITCH** neck edge of front (1). To reinforce the neck edge at inner small dot, stitch along seam line for about 1"(2.5cm) each side of dot, stitching through dot, as shown. Clip to stitching at dot.

BACK AND YOKE

- 2. GATHER** upper edge of back (2) between notches.
- 3.** Machine-stitch 5/8"(1.5cm) from neck edge of yoke back (3). Pin upper edge of back to lower edge of yoke back, matching centers and notches, pulling up gathering stitches to fit. Stitch. Press seam toward yoke.

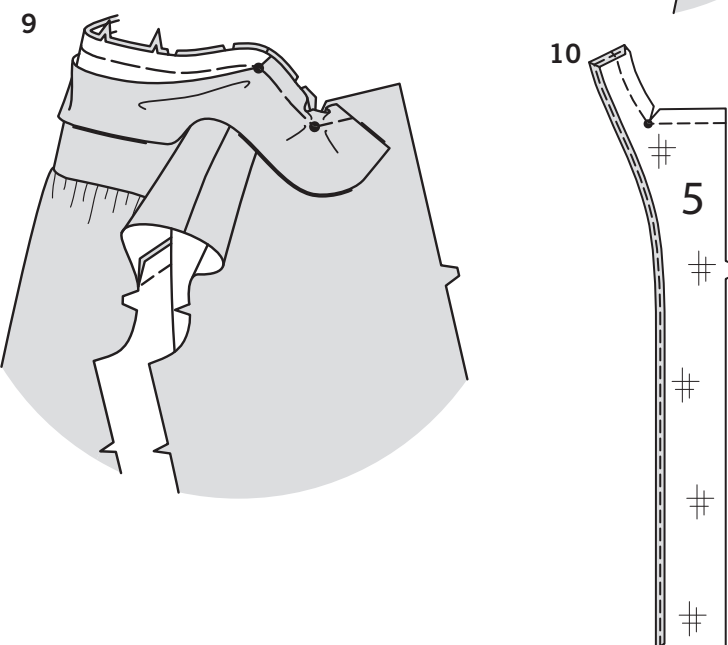
CONTINUE AS FOLLOWS

- 4.** Stitch front to back at shoulder seams. Press seam toward back.
- 5.** Apply **INTERFACING** to one collar (4) section. Machine-stitch 5/8"(1.5cm) from notched edge of collar, as shown. Clip notched edge of collar to stitching at inner small dots. Press under 5/8"(1.5cm) on raw edge between clips. Trim to 1/4"(6mm).
- 6.** With **RIGHT** sides together, stitch facing to collar, leaving notched edge open. Trim seam and corners.



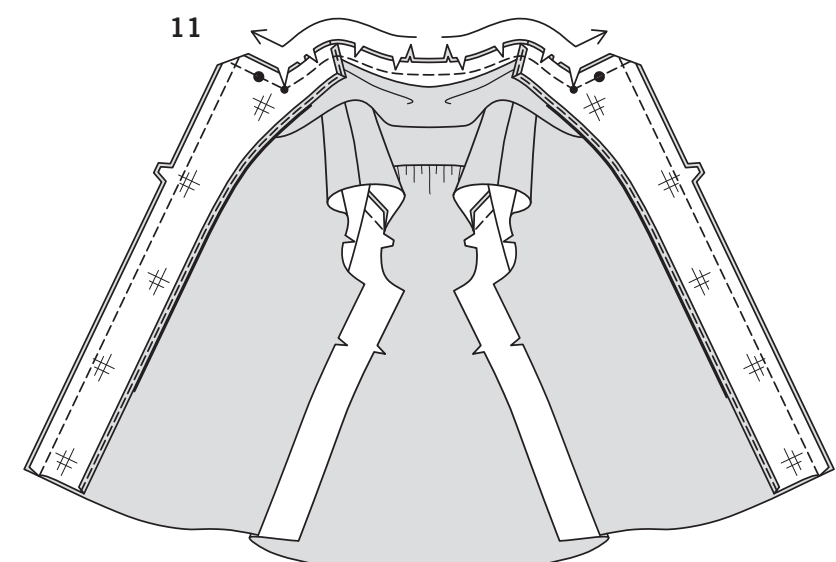
7. UNDERSTITCH the facing. Turn collar; press. Baste raw edges together.

8. With **RIGHT** sides together, pin front edge of collar (facing side) to top, matching small and large dots. Baste between small and large dot. Do Not trim this seam now. For best results, this seam will be trimmed later. Clip neck edge of top to stitching along curves.

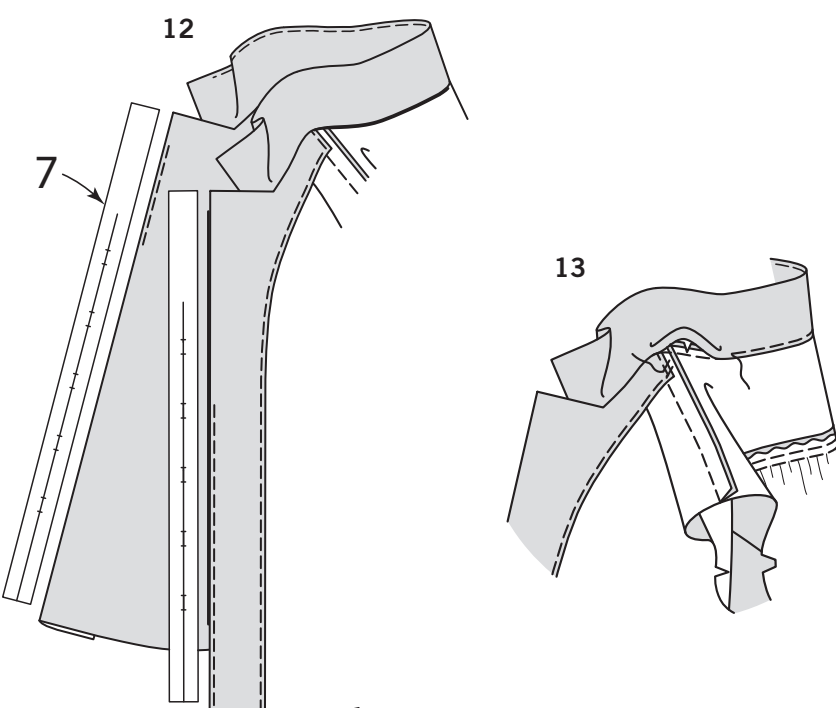


9. On **OUTSIDE**, pin collar to remaining neck edge of top, matching small dots, placing inner small dots at shoulder seams. Baste, being careful not to catch in pressed edge of collar.

10. Apply **INTERFACING** to front facing (5). To reinforce the neck edge, stitch along seam line, as shown. Clip to stitching at small dots. **EDGE FINISH** shoulder and inner edge.

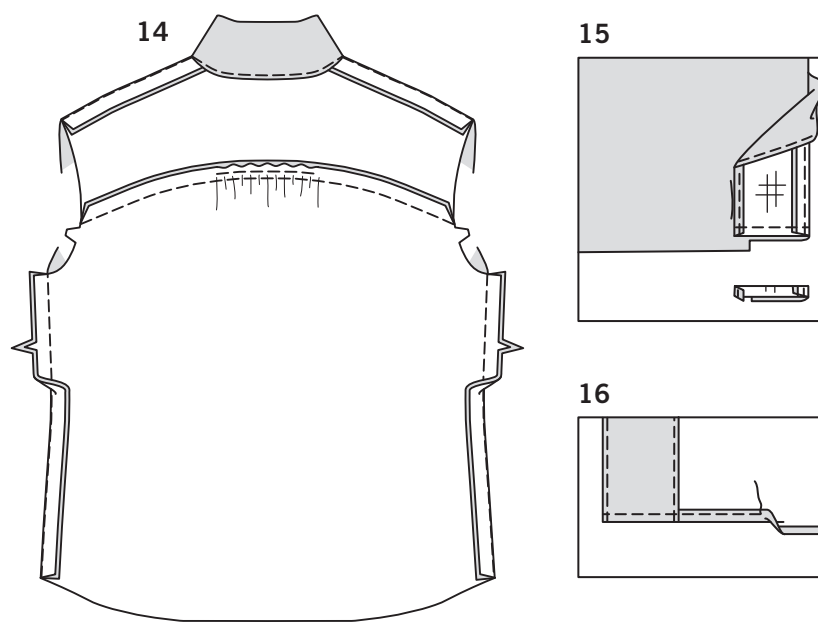


11. With **RIGHT** sides together and raw edges even, pin front facing to front and neck edge of top (over collar), matching small dots, large dots, and notches. Stitch each side of neck edges starting at center back, being careful not to catch in pressed edge of collar. Stitch front edges. Trim seam. Clip corners and curves, and to stitching at inner small dot.



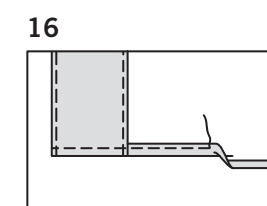
12. Using the buttonhole guide (7) aligned at top edge, **UNDERSTITCH** the top from below neck edge to above the first buttonhole marking, and the facing below second buttonhole marking to lower edge, as shown.

13. Turn facing to **INSIDE**, turning back neck seam allowance toward collar; press. Stitch pressed edge of collar over neck seam. To keep the facing in place, tack facing to shoulder seam allowances by hand or with a small piece of fusible web.

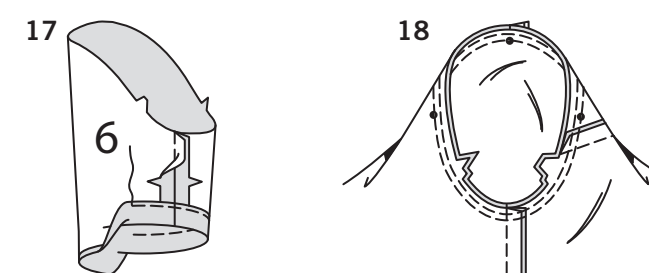


14. Stitch front to back at side edges. Press seam toward back.

15. Turn front facing to **OUTSIDE**. Stitch across facing along hem marking. Trim facing close to stitching. Trim top to within 5/8" (1.5cm) of inner edge of facing.

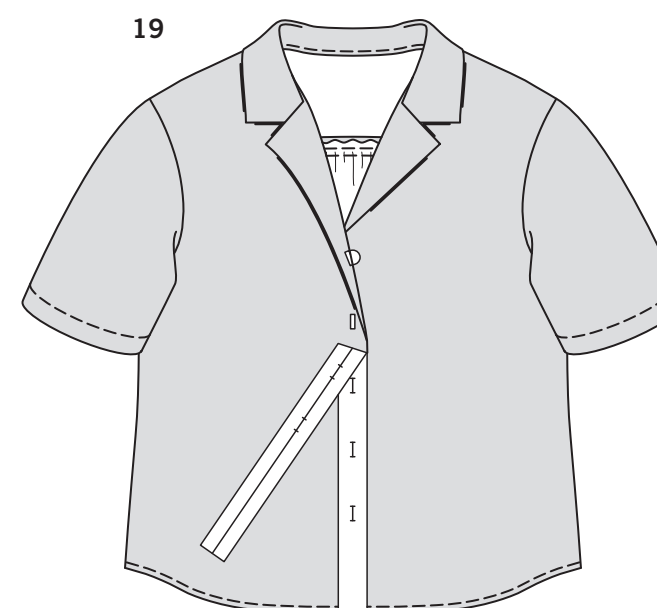


16. Turn facing to **INSIDE**; press, pressing up hem along marking. Press under 1/4" (6mm) on raw edge. Stitch hem in place starting at opening edge.



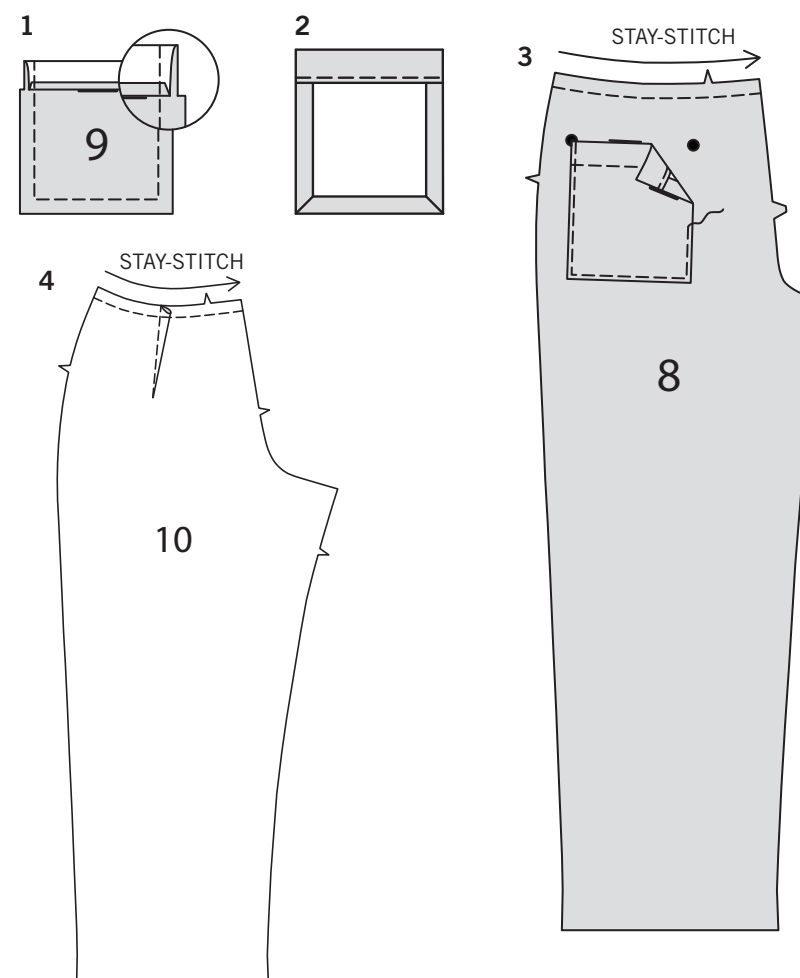
17. Stitch underarm seam of sleeve (6). Press up hem allowance. Turn under raw edge 1/4" (6mm). Stitch close to inner pressed edge.

18. Turn sleeve **RIGHT** side out. Hold top **WRONG** side out with armhole toward you. With **RIGHT** sides together, pin sleeve to armhole edge with center small dot at shoulder seam, matching underarm seams, notches and remaining small dots. Baste. Stitch. Stitch again 1/8" (3mm) from first stitching. Trim seam below notches close to stitching. Press only the seam allowance, shrinking out fullness.



19. Pin buttonhole guide (7) to top and front edge of **RIGHT** front. Transfer markings. Make buttonholes at markings. Lap **RIGHT** front over **LEFT**, matching centers. Sew buttons under buttonholes.

PANTS B, SHORTS C

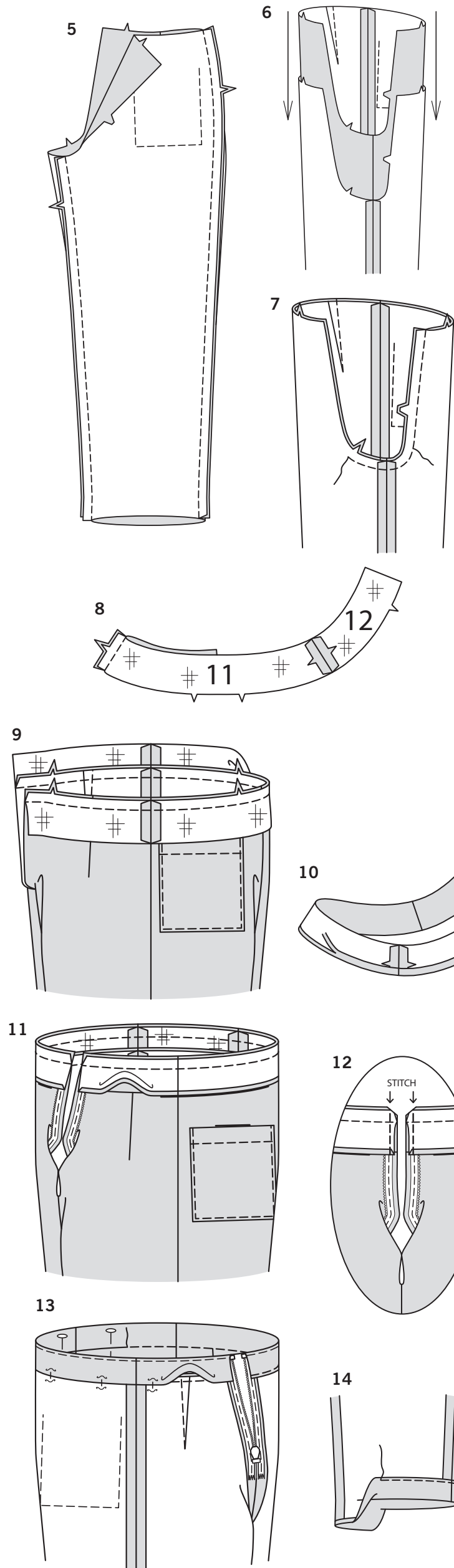


1. Press under 1/4" (6mm) on upper edge of pocket (9). Turn upper edge to **OUTSIDE** along fold line, forming facing. Stitch along seam line on raw edges. Trim seam allowance in the facing area to 1/4" (6mm).

2. Turn corners **RIGHT** side out, turning facing to the **WRONG** side; press, pressing under raw edges along stitching. Stitch facing close to inner edge.

3. STAY-STITCH upper edge of front (8). On **OUTSIDE**, pin pocket to front, placing upper corners at large dots. Stitch close to side and lower edges.

4. STAY-STITCH upper edge of back (10). Make **DART**(s). Press darts center.



5. Stitch front to back at inner leg and side seams.

6. With RIGHT sides together, insert one leg INSIDE the other.

7. With RIGHT sides together, pin center seam, matching inner leg seams and notches. Stitch from front edge to back notch. To reinforce seam within the crotch area, stitch again over first stitching.

8. Apply INTERFACING to front waistband (11) and back waistband (12). Stitch front waistband to back waistband at side edges.

9. With RIGHT sides together, pin waistband to pants or shorts, matching centers, seams, and notches. Stitch. Trim seam. Press seam toward waistband, pressing out the band. Insert invisible zipper into back openings of pants or shorts, following manufacturer's directions, stitching center back seam, connecting to previous stitching.

10. Stitch waistband facing sections in the same manner as waistband. Press under 1/2" (1.3cm) on notched edge. Trim to 1/4" (6mm).

11. Open out center back opening edges of pants or shorts, rolling the zipper teeth away from the opening edge. With RIGHT sides together, pin waistband facing to garment, matching centers and side seams. Stitch upper edge. Trim seam; clip curves.

12. Pin back opening edges together. Using an adjustable zipper foot, stitch 1/2" (1.3cm) from back edges, keeping zipper teeth free. Trim corners. Do not trim center back edges.

13. **UNDERSTITCH** the waistband facing. Turn facing and back edges to INSIDE, rolling zipper teeth back in place; press. On INSIDE, pin pressed edge of facing over seam, placing pins on OUTSIDE. (Pressed edge of facing extends below seam.) On OUTSIDE, stitch in the ditch or groove of seam, between zipper, catching in finished edge of facing on INSIDE.

14. Press up hem allowance. Turn under raw edge 1/4" (6mm). Stitch close to inner pressed edge.

BLUSA A

1. **HAGA PUNTADA DE SOSTEN** al borde del escote frontal (1). Para reforzar el borde del escote en el punto interior pequeño, cosa a lo largo de la línea de la costura por alrededor de 1" (2.5cm) a cada lado del punto, cosiendo a través del punto, como se muestra. Haga cortes a la puntada en el punto.

ESPALDA Y CANESÚ

2. **FRUNZA** el borde superior de la espalda (2) entre las muescas.

3. Cosa a máquina a 5/8" (1.5cm) desde el borde del escote de la parte trasera del canesú (3). Sujete con alfileres el borde superior de la parte trasera, al borde inferior de la parte trasera del canesú, casando los centros y las muescas, halando hacia arriba las puntadas fruncidas para ajustar. Cosa. Planche la costura hacia el canesú.

CONTINUE COMO SIGUE

4. Cosa el frente a la espalda en las costuras de los hombros. Planche la costura hacia atrás.

5. Aplique **ENTRETELA** a una sección del cuello (4). Cosa a máquina a 5/8" (1.5cm), desde el borde con muescas del cuello, como se muestra. Haga cortes al borde con muescas del cuello, para coser en los puntos interiores pequeños. Planche un doblez de 5/8" (1.5cm), sobre el borde no terminado entre los cortes. Recorte a 1/4" (6mm).

6. DERECHO CON DERECHO, cosa la vista al cuello, dejando abiertos los bordes con muescas. Recorte la costura y las esquinas.

7. **HAGA PUNTADA OCULTA** a la vista. Voltee el cuello; planche. Hilvane conjuntamente los bordes no terminados.

8. DERECHO CON DERECHO, sujete con alfileres el borde frontal del cuello (lado de la vista) a la blusa, casando los puntos pequeños y grandes. Hilvane entre los puntos pequeños y grandes. No recorte esta costura ahora. Para mejores resultados, esta costura será recortada más adelante. Haga cortes al borde del escote de la blusa hasta la puntada a lo largo de las curvas.

9. En el EXTERIOR, sujete con alfileres el cuello al borde restante del escote de la blusa, casando los puntos pequeños, colocando los puntos interiores pequeños en las costuras de los hombros. Hilvane, teniendo cuidado de no agarrar el borde doblado del cuello.

10. Aplique **ENTRETELA** a la vista frontal (5). Para reforzar el borde del escote, cosa a lo largo de la línea de la costura, como se muestra. Haga cortes a la puntada en los puntos pequeños. **TERMINE EL BORDE** de los hombros e interior.

11. DERECHO CON DERECHO y emparejados los bordes no terminados, sujete con alfileres la vista frontal al frente y el borde del escote a la blusa (sobre el cuello), casando los puntos pequeños, los puntos grandes y las muescas. Cosa a cada lado de los bordes del escote, comenzando en la parte trasera central, teniendo cuidado de no agarrar el borde doblado del cuello. Cosa los bordes frontales. Recorte la costura. Haga cortes en las esquinas y en las curvas y para coser en el punto pequeño interior.

12. Usando la guía de los ojales (7) alinee en el borde de la blusa, **HAGA PUNTADA OCULTA** en la blusa desde abajo del borde del escote, hasta encima de la primera marca del ojal y la vista, por debajo de la segunda marca del ojal hasta el borde inferior, como se muestra.

13. Voltee la vista al INTERIOR, volteando el margen de la costura del escote trasero hacia el cuello; planche. Cosa el borde doblado del cuello sobre la costura del escote. Para mantener la vista en su lugar, cósala manualmente a los márgenes de la costura de los hombros o mediante un pedazo pequeño de entretela adhesiva.

14. Cosa el frente a la espalda en las costuras laterales. Planche la costura hacia atrás.

15. Voltee la vista frontal al EXTERIOR. Cosa a través de la vista y a lo largo de la marca del dobladillo. Recorte la vista cerca de la puntada. Recorte la blusa hasta dentro de 5/8" (1.5cm) del borde interior de la vista.

16. Voltee la vista al INTERIOR; planche, planchando hacia arriba el dobladillo a lo largo de la marca. Planche un doblez de 1/4" (6mm) sobre el borde no terminado. Cosa el dobladillo en su lugar, comenzando en el borde abierto.

CONTINUE COMO SIGUE

17. Cosa la costura de debajo de los brazos de la manga (6). Planche hacia arriba el margen del dobladillo. Voltee un doblez de 1/4" (6mm) al borde no terminado. Cosa cerca del borde doblado interior.

18. Voltee la manga al lado DERECHO. Lleve la blusa al REVES con la sisa hacia usted. DERECHO CON DERECHO, sujete con alfileres la manga al borde de la sisa, con el centro del punto pequeño en la costura de los hombros, casando las costuras de debajo del brazo, las muescas y el resto de los puntos pequeños. Hilvane. Cosa. Cosa de nuevo a 1/8" (3mm) de la puntada previa. Recorte la costura por debajo de las muescas, cerca de la puntada. Planche únicamente el margen de la costura, disminuyendo de esa manera la amplitud.

19. Sujete con alfileres la guía del ojal (7) a la blusa y el borde frontal del frente DERECHO. Traslade las marcas. Haga los ojales en las marcas. Cruce el frente DERECHO sobre el IZQUIERDO, casando los centros. Cosa los botones debajo de los ojales.

PANTALONES B, SHORTS C

1. Planche un doblez de 1/4" (6mm) sobre el borde superior del bolsillo (9). Voltee el borde superior al EXTERIOR, a lo largo de la línea del doblez, formando la vista. Cosa a lo largo de la línea de la costura sobre los bordes no terminados. Recorte el margen de la costura en el área de la vista a 1/4" (6mm).

2. Voltee las esquinas al lado DERECHO, volteando la vista al REVES; planche, planchando un doblez a los bordes no terminados a lo largo de la puntada. Cosa la vista cerca del borde interior.

3. **HAGA PUNTADA DE SOSTEN** al borde superior del frente (8). En el EXTERIOR, sujete con alfileres el bolsillo al frente, colocando las esquinas superiores en los puntos grandes. Cosa cerca de los bordes lateral e inferior.

4. **HAGA PUNTADA DE SOSTEN** al borde superior de la parte trasera (10). Haga las **PINZA(s)** al centro.

5. Cosa el frente a la parte trasera en las costuras interior de la pierna y lateral.

6. DERECHO CON DERECHO, inserte una pierna al INTERIOR de la otra.

7. DERECHO CON DERECHO, sujete con alfileres la costura central, casando las costuras interiores de la pierna y las muescas. Cosa desde el borde frontal hasta la muesca trasera. Para reforzar la costura dentro del área de la entrepierna, cosa de nuevo sobre la puntada previa.

8. Aplique **ENTRETELA** a las pretinas frontal (11) y trasera (12). Cosa la pretina frontal a la trasera en las costuras laterales.

9. DERECHO CON DERECHO, sujete con alfileres la pretina a los pantalones o los shorts, casando los centros las costuras y las muescas. Cosa. Recorte la costura. Planche la costura hacia la pretina, planchando hacia afuera la banda. Inserte la cremallera de manera invisible dentro de las aberturas traseras de los pantalones o los shorts, siguiendo las instrucciones del fabricante, cosiendo la costura trasera central y uniendo las puntadas previas.

10. Cosa las secciones de la vista de la pretina, de la misma manera que para la pretina. Planche un doblez de 1/2" (1.3cm) sobre el borde con muescas. Recorte a 1/4" (6mm).

11. Abra los bordes abiertos traseros centrales de los pantalones o shorts, enrollando los dientes de la cremallera a distancia del borde abierto. DERECHO CON DERECHO, sujete con alfileres la vista de la pretina a la prenda, casando las costuras centrales y las laterales. Cosa el borde superior. Recorte la costura; haga cortes a lo largo de las cuvas.

12. Sujete con alfileres conjuntamente los bordes abiertos traseros. Usando un pie ajustable para cremallera, cósalos a 1/2" (1.3cm) de los bordes traseros, manteniendo libres los dientes de la cremallera. Recorte las esquinas. No recorte los bordes traseros centrales.

13. **HAGA PUNTADA OCULTA** a la vista de la pretina. Voltee los bordes de la vista y el trasero al INTERIOR, enrollando los dientes de la cremallera hacia atrás en su lugar; planche. En el INTERIOR, sujete con alfileres el borde doblado de la vista sobre la costura, colocando los alfileres en el EXTERIOR. (El borde doblado de la vista se extiende por debajo de la costura). En el EXTERIOR, cosa en la ranura o hendidura de la costura, entre la cremallera, agarrando el borde terminado de la vista en el INTERIOR.

14. Planche hacia arriba el margen del dobladillo. Voltee un doblez de 1/4" (6mm) al borde no terminado. Cosa cerca del borde doblado interior.