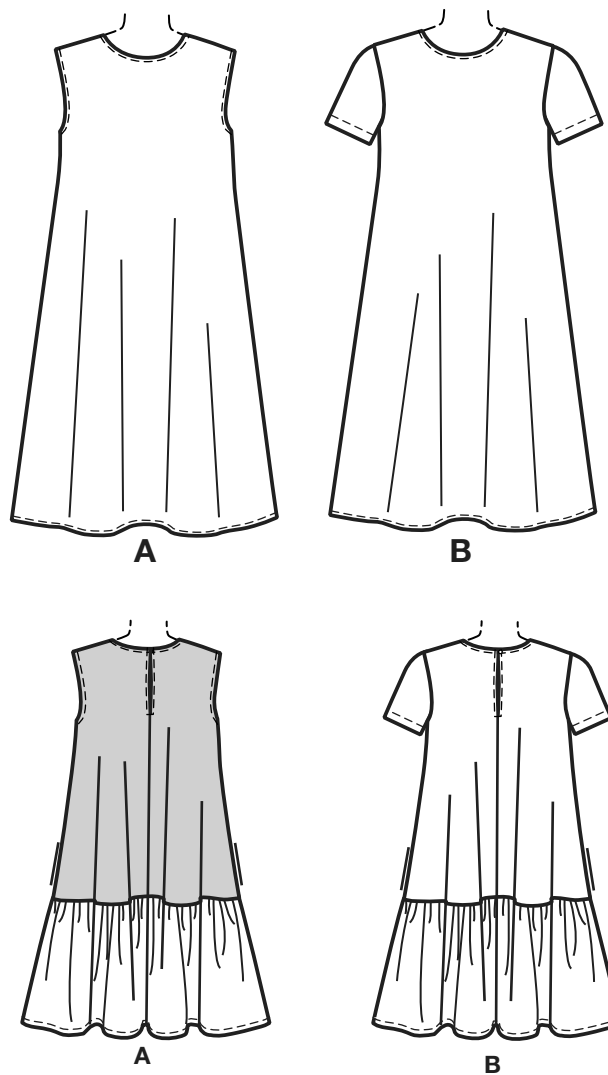


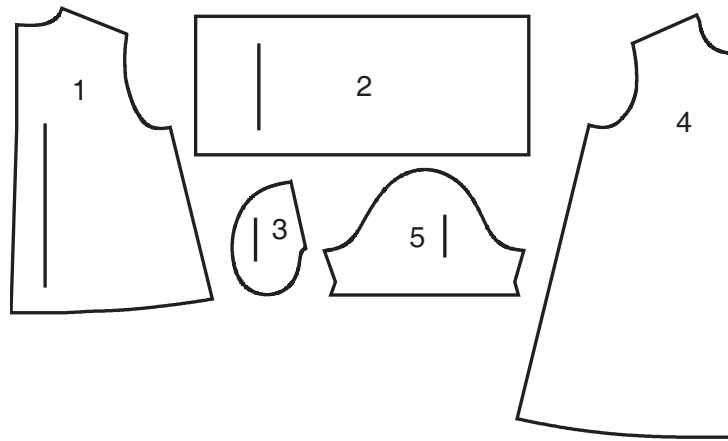
NEW LOOK® N6799

www.simplicity.com info@simplicity.com 1-888-588-2700

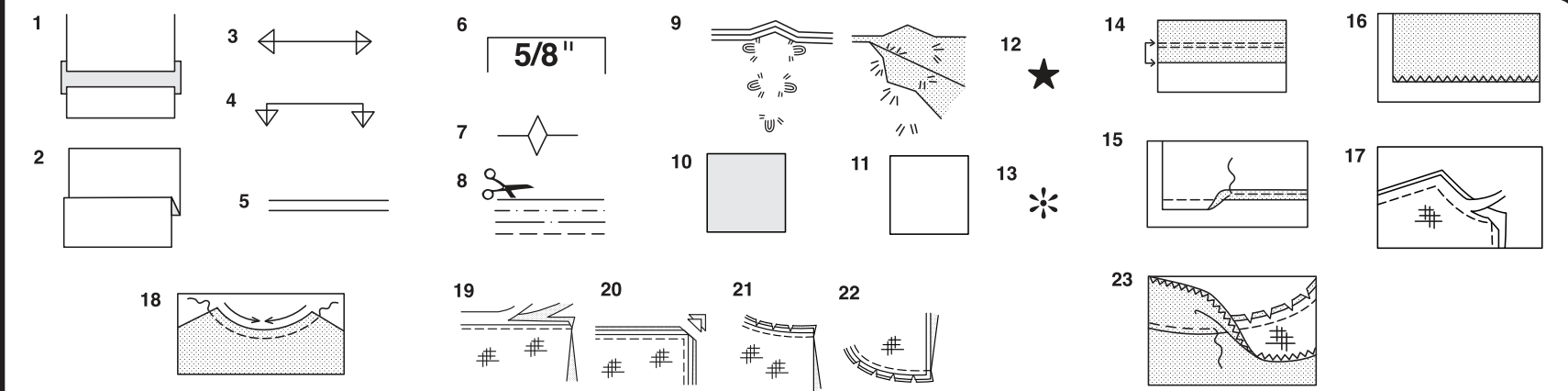
Thank you for purchasing this New Look pattern. We made every effort to provide you with a high quality product. Gracias por haber comprado este patrón de New Look. Hemos hecho todos los esfuerzos para ofrecerle un producto de alta calidad.



5 PIECES



- 1 BACK
- 2 LOWER BACK
- 3 POCKET
- 4 FRONT
- 5 SLEEVE B



How To Use Your Multi Size Pattern

First Prepare Your Pattern

Select the pattern pieces according to the view you are making.

This pattern is made to body measurements with ease allowed for comfort and style. If your body measurements differ from those on the pattern envelope adjust the pieces before placing them on the fabric.

Check your back neck to waist and dress length, if necessary, alter the pattern. Lengthening and shortening lines are indicated.

1. **TO LENGTHEN** : Cut pattern between printed lines and place paper underneath. Spread pattern the required amount and pin to paper.
2. **TO SHORTEN** : Fold at the printed lines to form a pleat half the amount to be shortened, ie 1/2" (1.3cm) deep to shorten 1" (2.5cm).

Study Your Pattern Markings

3. **STRAIGHT GRAIN** : Place an even distance from selvage or a straight thread.
4. **FOLD** : Place on fold of fabric.
5. **LENGTHENING AND SHORTENING LINES**.
6. **SEAM ALLOWANCE** : 5/8" (1.5cm) unless otherwise stated.
7. **NOTCHES** : Match notches.
8. **CUTTING LINES** : Multi patterns have different cutting lines for different sizes.
9. **TAILOR-TACKS** : With double thread make two loose stitches forming loop through fabric layers and pattern leaving long ends. Cut loop to remove pattern. Snip thread between fabric layers. Leave tufts.

Cutting Layouts

Cutting Directions

FOR FOLDED AND DOUBLE LAYER FABRIC - Place fabric with right side inside and pin pattern on wrong side of fabric.

FOR SINGLE LAYER - Pin pattern on right side of fabric. NOTE: Pattern pieces may interlock more closely for smaller sizes. Cut notches out from cutting line.

BEFORE removing pattern from fabric, transfer all pattern markings using tailor tacks or dressmaking tracing paper.

10. **KEY**: pattern printed side down
11. **KEY**: pattern printed side up
12. **KEY**: Cut out all pieces except pieces that extend beyond folded fabric, then open out fabric and on RIGHT side of fabric, cut in positions as shown.
13. **KEY**: For with and without nap layouts ensure fabric is placed with nap or design running in same direction.

Before pinning to fabric, press tissue pattern with a warm dry iron to remove creases.

Sewing Directions

Fabric Key	Right Side	Wrong Side	Interfacing	Lining

Sew garment following **Sewing Directions**.

PIN or machine-baste seams matching notches.

STITCH 5/8" (1.5cm) seams unless otherwise stated.

PRESS seams open unless otherwise indicated, clipping when necessary so seams will lie flat.

14. **EASE-STITCH** or **GATHER** - Loosen needle tension slightly. With RIGHT side up, stitch 5/8" (1.5cm) from cut edge using a long stitch. Stitch again 1/4" (6mm) away in the seam allowance.

EDGE FINISH - Neaten raw edges of seams, hems and facings using one of the following methods.

15. Stitch 1/4" (6mm) from edge, turn under along stitching and stitch.
16. Zig-zag or overlock raw edges.

17. **INTERFACING** — Pin interfacing to WRONG side of fabric. Cut across corners that will be enclosed with seams. Machine-baste 1/2" (1.3cm) from cut edge. (Shown only on first illustration). Trim interfacing close to machine-basting. For FUSIBLE interfacing, follow manufacturer's directions.

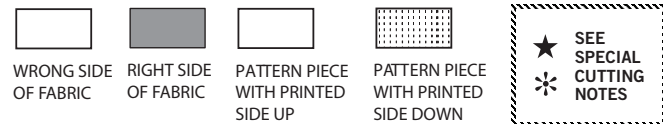
18. **STAY-STITCH** —Stitch 1/2" (1.3cm) from cut edge, in direction of arrows: (Shown only in the first illustration).

LAYERING — Trim seam allowance in layers.

19. Layer enclosed seams
20. Trim corners
21. Clip inner curves
22. Notch outer curves

23. **UNDERSTITCH** —Press facing away from garment; press seam toward facing. Facing side up, understitch close to seam through facing and seam allowances.

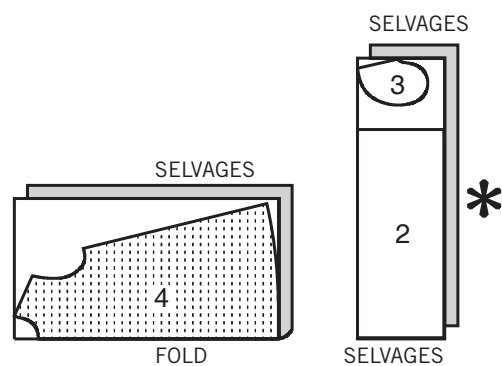
Cutting Layouts



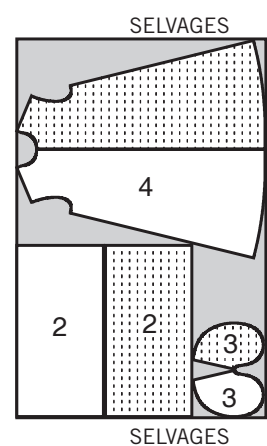
DRESS A

USE PIECES 2 3 4

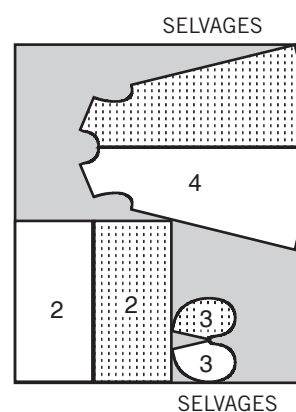
45" (115 CM)
ALL SIZES



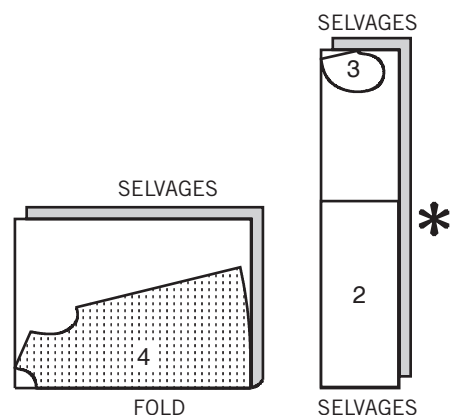
60" (150 CM)
SIZES XS S



60" (150 CM)
SIZE M



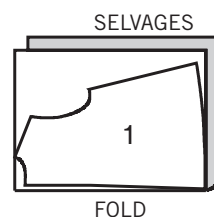
60" (150 CM)
SIZES L XL XXL



CONTRASTE A

USE PIECE 1

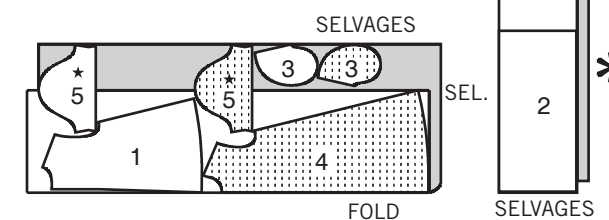
45",60" (115,150 CM)
ALL SIZES



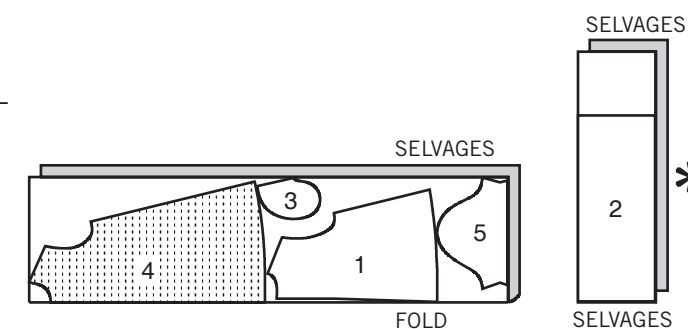
DRESS B

USE PIECES 1 2 3 4 5

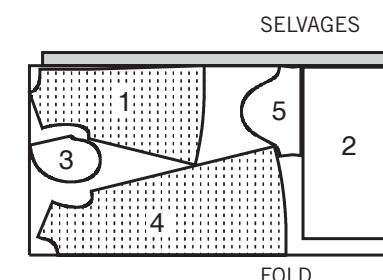
45" (115 CM)
SIZES XS S M



45" (115 CM)
SIZES L XL XXL



60" (150 CM)
SIZES XS S



Español

VESTIDO A

USE LAS PIEZAS 2 3 4

45" (115 CM) TODAS LAS TALLAS

60" (150 CM) TALLAS XP P

60" (150 CM) TALLA M

60" (150 CM) TALLAS G XG XXG

CONTRASTE A

USE LA PIEZA 1

45",60" (115,150 CM)
TODAS LAS TALLAS

DRESS B

USE LAS PIEZAS 1 2 3 4 5

45" (115 CM) TALLAS XP P M

45" (115 CM) TALLAS G XG XXG

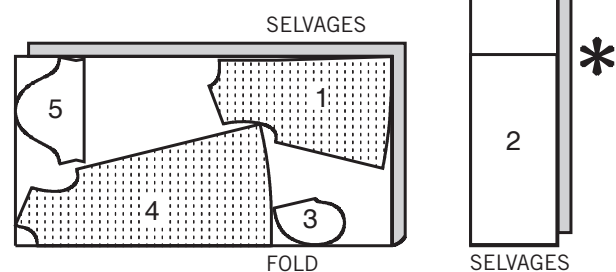
60" (150 CM)
TALLAS XP P

SELVAGES= ORILLAS
FOLD= DOBLEZ

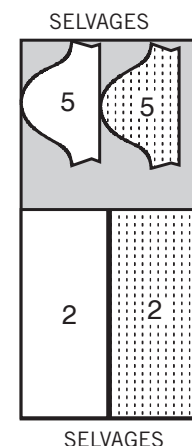
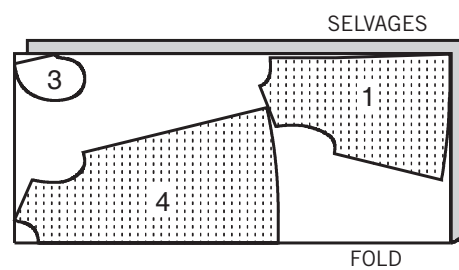
N6799

2 of 4

60" (150 CM)
SIZES M L



60" (150 CM)
SIZES XL XXL



LINING A,B

USE PIECE 3

45" (115 CM)
ALL SIZES



Español

60" (150 CM)
TALLAS M G

60" (150 CM)
TALLAS XG XXG

FORRO A,B

USE LA PIEZA 3
TODAS LAS TALLAS

Sewing terms appearing in **BOLD TYPE** in Sewing Instructions are explained below.

EASESTITCH - Stitch along seamline, using long machine stitches. Pull thread ends when adjusting to fit.

NOTE: For sleeve caps, make a second row of long machine stitches 1/4" (6mm) away in seam allowance for more control.

GATHER - Stitch along seamline and again 1/4" (6mm) away in seam allowance, using long machine stitches. Pull thread ends when adjusting to fit.

NARROW HEM - Turn in hem; press, easing in fullness if necessary. Open out hem. Turn in again so raw edge is along crease; press. Turn in along crease; stitch.

SLIPSTITCH - Slide needle through a folded edge, then pick up a thread of underneath fabric.

STAYSTITCH - Stitch 1/8" (3mm) from seamline in seam allowance (usually 1/2" (13mm) from raw edge).

TOPSTITCH - On outside, stitch 1/4" (6mm) from edge, seam or previous stitching, using presser foot as guide, or stitch where indicated in instructions.

DRESS A,B

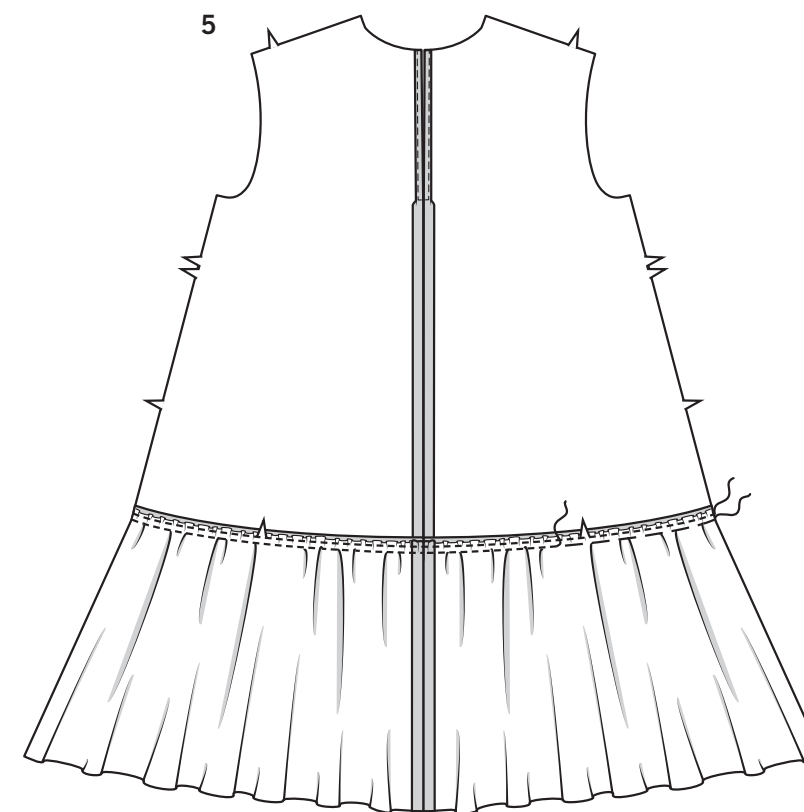
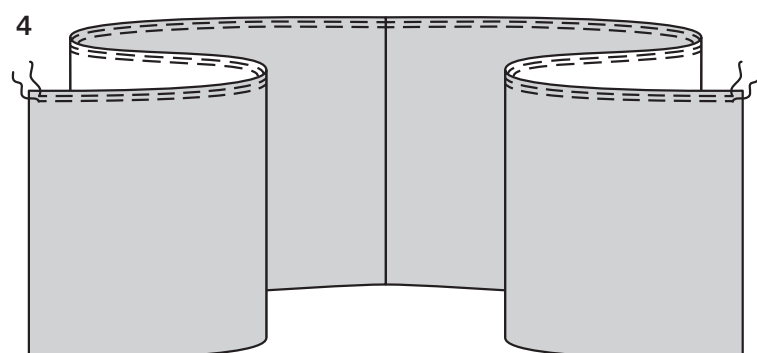
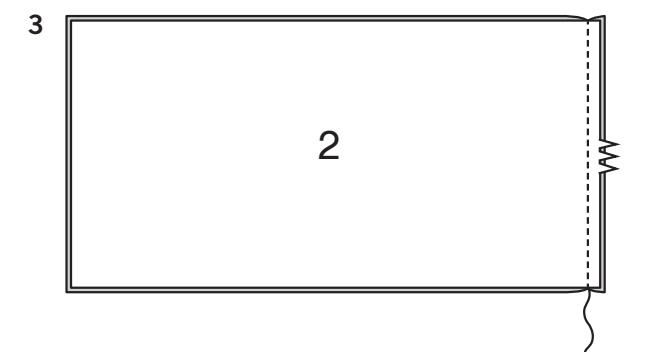
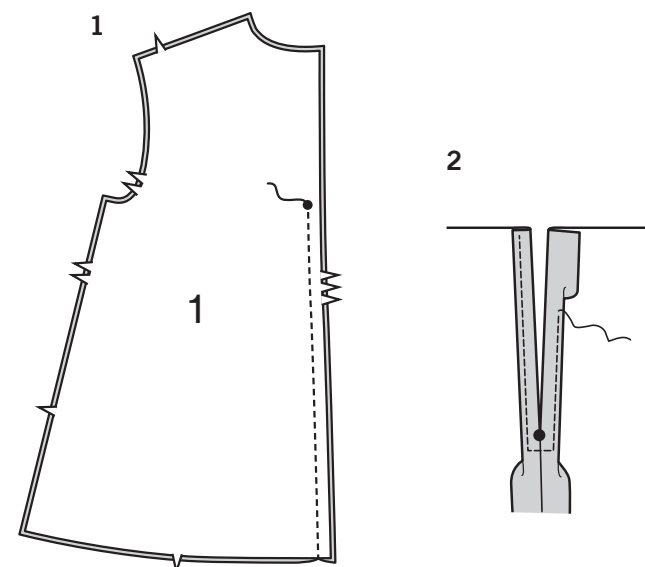
NOTE: Illustrated for View A unless otherwise indicated.

BACK AND FRONT

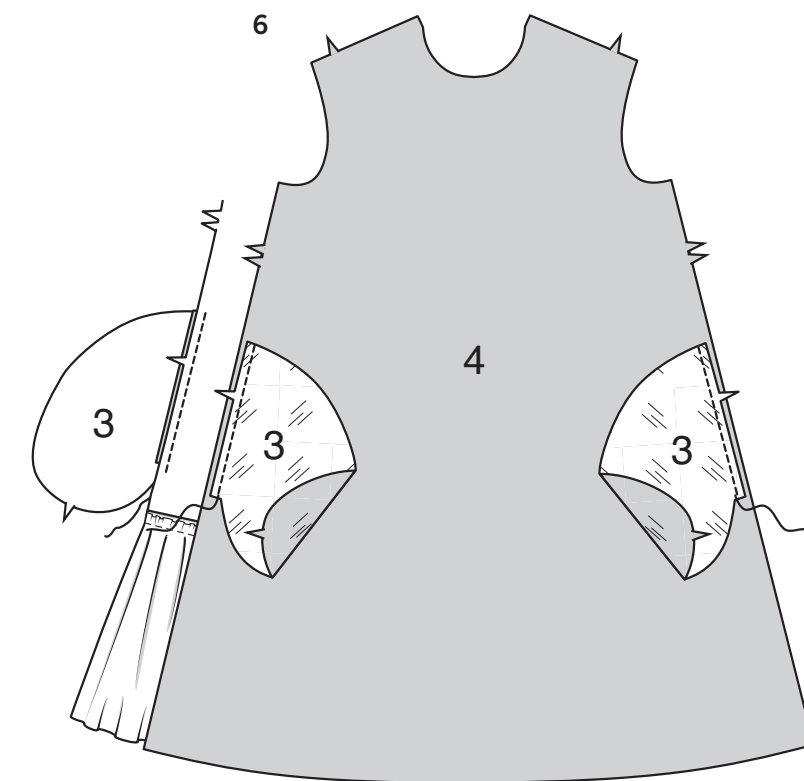
1. Stitch BACK (1) sections together at center back, leaving open above large circle.
2. Make 5/8" (1.5cm) **NARROW HEM** at back opening edges, tapering to nothing below large circle. Pivot across seam allowance 1/4" (6mm) below large circle when stitching.

3. Stitch LOWER BACK (2) section together at center back.

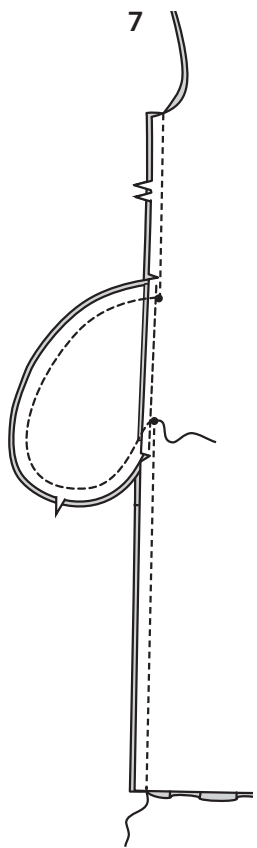
4. **GATHER** upper edge of lower back between seamlines.



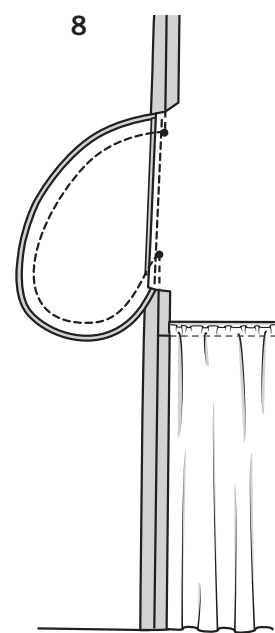
5. Pin lower back to back, matching centers. Adjust gathers; baste. Stitch. Stitch again 1/4" (6mm) away in seam allowance. Press seam up.



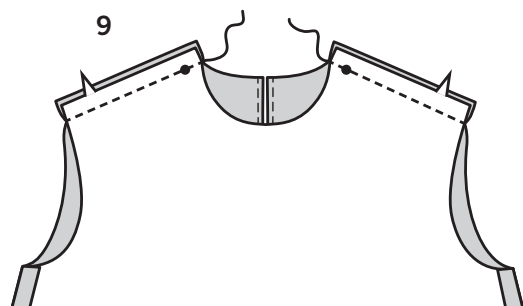
6. Stitch one **POCKET** (3) (lining) section to **FRONT** (4) at each side in 1/4" (6mm) seam. Press seams toward pockets. Stitch one **POCKET** (fabric) section to back at each side in 1/4" (6mm) seam. Press seams toward pockets.



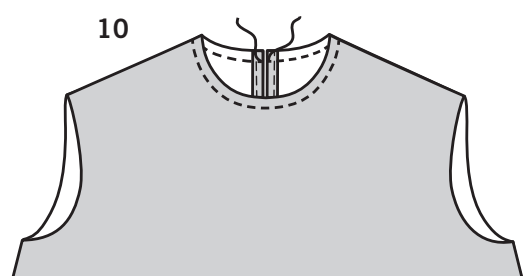
7. Stitch front and back together at sides, leaving open between large circles. Stitch pocket edges together to side seams. Clip back seam allowances above and below pockets.



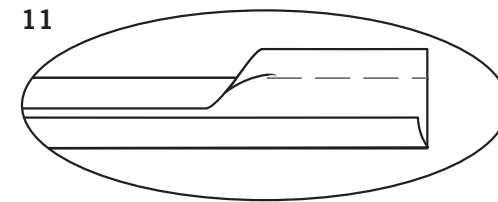
8. Turn pockets toward front along seamlines; press.



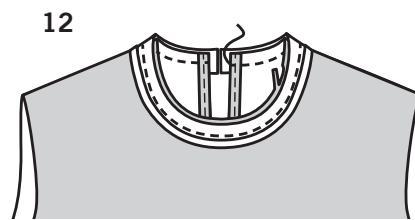
9. Stitch front to back at shoulders.



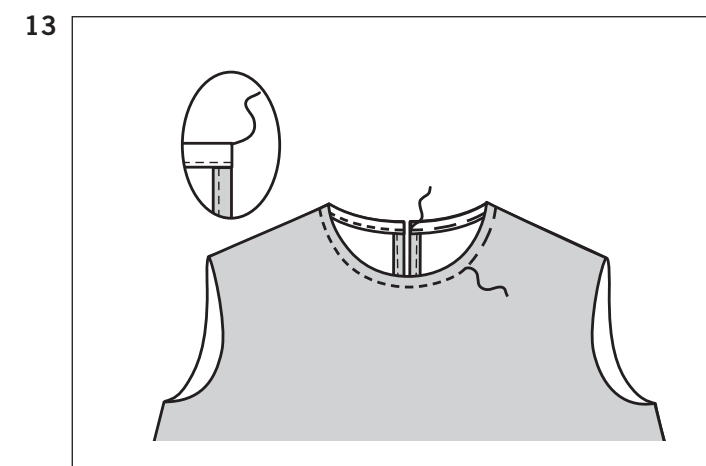
10. STAYSTITCH neck edge of dress.



11. Open out one folded edge of bias tape, press lightly.



12. Pin bias tape to neck edge, placing crease along seamline. Extending ends 3/8" (1cm) at opening edges. Stitch along crease. Trim neck seam allowance even with bias tape.

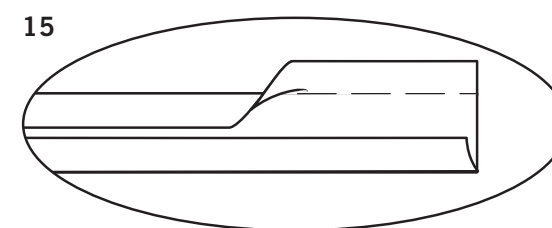
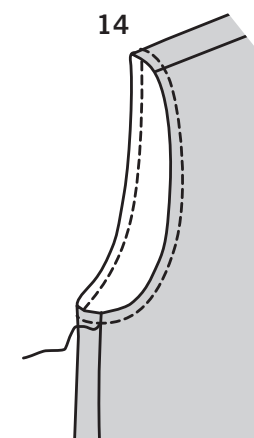


13. Turn bias tape to inside along seam, turning in ends. Press. Baste in place. SLIPSTITCH ends. Stitch along basting.

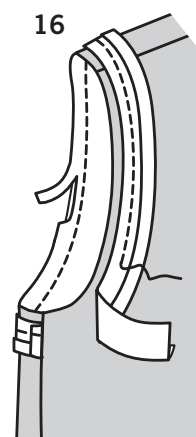
ARMHOLE FINISH

VIEW A:

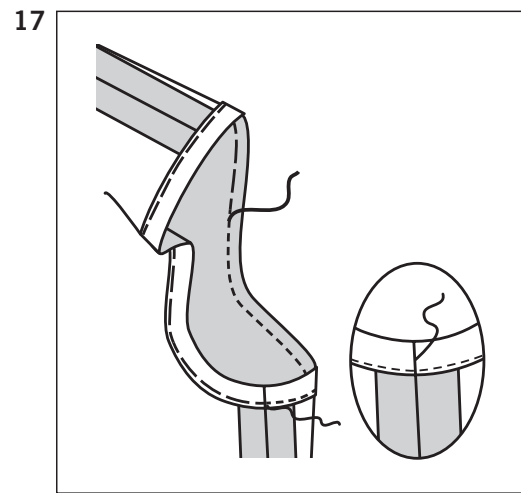
14. STAYSTITCH armhole edge.



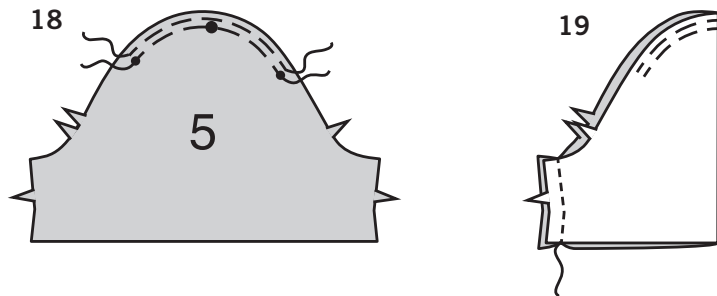
15. Open out one folded edge of bias tape, press lightly.



16. Pin bias tape to armhole edge, placing crease along seamline, turning in ends to meet at underarm seam, as shown. Stitch along crease. Trim seam allowance even with bias tape.

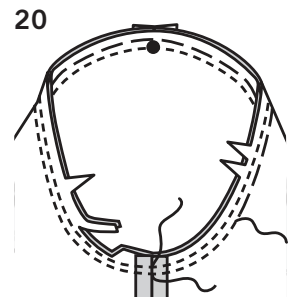


17. Turn bias tape to inside along seam. Press. Baste in place. **SLIPSTITCH** ends. Stitch along basting.

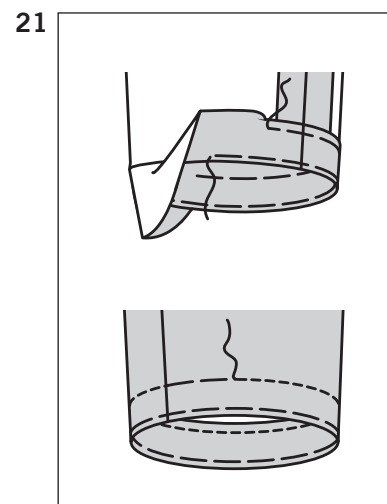
**VIEW B:**

18. **EASESTITCH** upper edge of SLEEVE (5) between small circles.

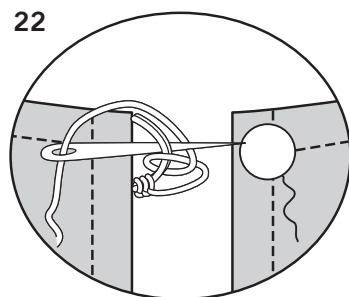
19. Stitch sleeve seam.



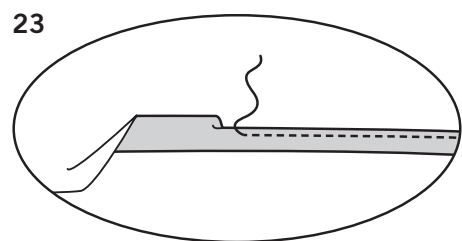
20. With right sides together, pin sleeve into armhole, placing large circle at shoulder seam. Adjust ease; baste. Stitch. Stitch again 1/4" (6mm) away in seam allowance. Trim close to stitching. Press seam allowances flat. Turn seam toward sleeve.



21. Turn up sleeve hem. Baste close to fold. Turn in 1/4" (6mm) on raw edge. Baste hem in place close to upper edge. Press. **TOPSTITCH** hem along upper basting.

**FINISHING**

22. Sew button to right back opening edge at marking. Make thread loop at opening edge opposite button, as shown, large enough for button to pass through.



23. Make 5/8" (1.5cm) **NARROW HEM** at lower edge of dress.

VESTIDOS A, B

NOTA: Se ilustra el Modelo A, a menos que se indique algo en contrario.

ESPALDA Y FRENTE

1. Cosa conjuntamente las secciones de la ESPALDA (1) a la parte trasera central, dejando una abertura por encima del círculo grande.
2. Haga un **DOBLADILLO ANGOSTO** de 5/8" (1.5cm) en los bordes abiertos traseros, disminuyendo a casi nada por debajo del círculo grande. Gire a través del margen de la costura a 1/4" (6mm), por debajo del círculo grande cuando lo esté cosiendo.
3. Cosa conjuntamente la sección TRASERA INFERIOR (2), en la parte trasera central.
4. **FRUNZA** el borde superior de la parte trasera inferior, entre las líneas de la costura.
5. Sujete con alfileres la parte trasera inferior a la espalda, casando los centros. Ajuste los fruncidos; hilvane. Cosa. Cosa de nuevo a 1/4" (6mm) a distancia del margen de la costura. Planche la costura hacia arriba.
6. Cosa una sección del BOLSILLO (3) (forro) al FRENTE (4), a cada lado en una costura de 1/4" (6mm). Planche las costuras hacia los bolsillos. Cosa una sección del BOLSILLO (tela) a la parte trasera, a cada lado en una costura de 1/4" (6mm). Planche las costuras hacia los bolsillos.
7. Cosa conjuntamente el frente a la espalda por los lados, dejando una abertura entre los círculos grandes. Cosa conjuntamente los bordes del bolsillo a las costuras laterales. Haga cortes a los márgenes de la costura traseros, por encima y por debajo de los bolsillos.

8. Voltee los bolsillos hacia el frente, a lo largo de las líneas de la costura; planche.

9. Cosa el frente a la espalda en los hombros.

10. **HAGA PUNTADA DE SOSTEN** al borde del escote del vestido.

11. Abra un borde doblado de la cinta de bias, planchando ligeramente.

12. Sujete con alfileres la cinta de bias al borde del escote, colocando los pliegues a lo largo de la línea de la costura. Extienda los extremos a 3/8" (1cm) en los bordes abiertos. Cosa a lo largo del pliegue. Recorte el margen de la costura del escote emparejada con la cinta de bias.

13. Voltee la cinta de bias al interior y a lo largo de la costura, volteándola en los extremos. Planche. Hilvane en su lugar. **HAGA PUNTADA FALSA** a los extremos. Cosa a lo largo del hilvanado.

TERMINADO DE LA SISA**MODELO A:**

14. **HAGA PUNTADA DE SOSTEN** al borde de la sisa.

15. Abra un borde doblado de la cinta de bias, ligeramente plánelo.

16. Sujete con alfileres la cinta de bias al borde de la sisa, colocando el pliegue a lo largo de la línea de la costura, volteando en los extremos hasta unir en la costura de debajo del brazo, tal como se muestra. Cosa a lo largo del pliegue. Recorte el margen de la costura emparejado con la cinta de bias.

17. Voltee la cinta de bias al interior y a lo largo de la costura. Planche. Hilvane en su lugar. **HAGA PUNTADA OCULTA** a los extremos. Cosa a lo largo del hilvanado.

MODELO B:

18. **HAGA PUNTADA DE FRUNCE** al borde superior de la MANGA (5), entre los círculos pequeños.

19. Cosa la costura de la manga.

20. **DERECHO CON DERECHO**, sujete con alfileres la manga dentro de la sisa, colocando el círculo grande en las costuras de los hombros. Ajuste el fruncido, hilvane. Cosa. Cosa de nuevo a 1/4" (6mm) a distancia del margen de la costura. Recorte cerca de la puntada. Planche planos los márgenes de la costura. Voltee la costura hacia la manga.

21. Voltee hacia arriba el dobladillo de la manga. Hilvane cerca del doblez. Voltee a 1/4" (6mm) sobre el borde no terminado. Hilvane el dobladillo en su lugar, cerca del borde superior. Planche. **HAGA PUNTADA DE ADORNO** al dobladillo, a lo largo del hilvanado superior.

TERMINADO

22. Cosa el botón al borde de la abertura trasera derecha en la marca. Haga una presilla en el borde abierto opuesto al botón, tal como se muestra, lo suficientemente grande para que el botón pase.

23. Haga un **DOBLADILLO ANGOSTO** de 5/8" (1.5cm) en el borde inferior del vestido.