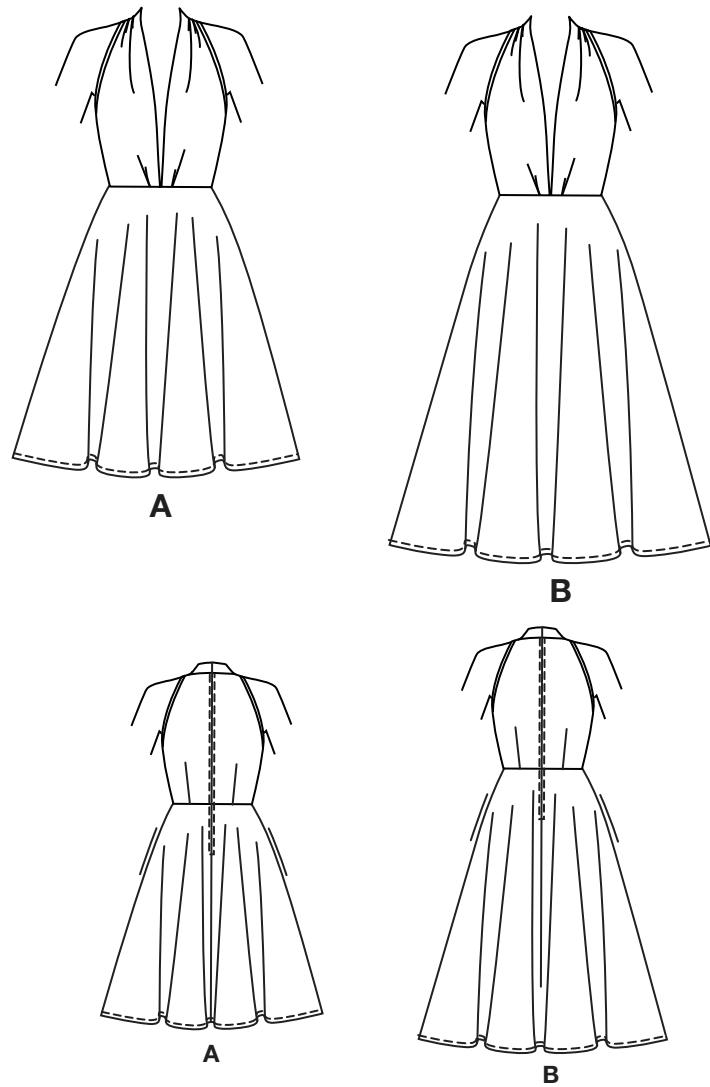


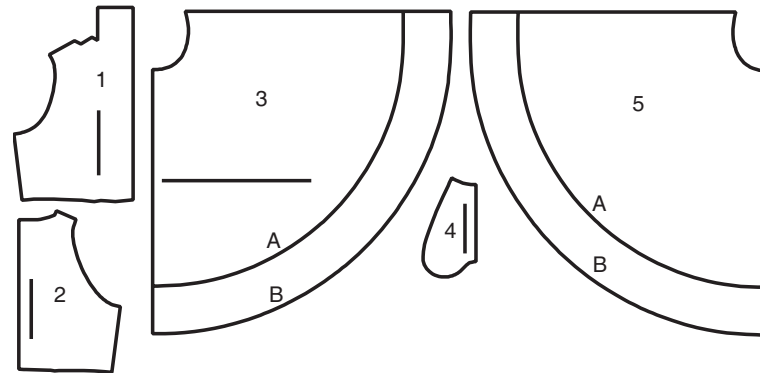
# NEW LOOK® N6797

www.simplicity.com info@simplicity.com 1-888-588-2700

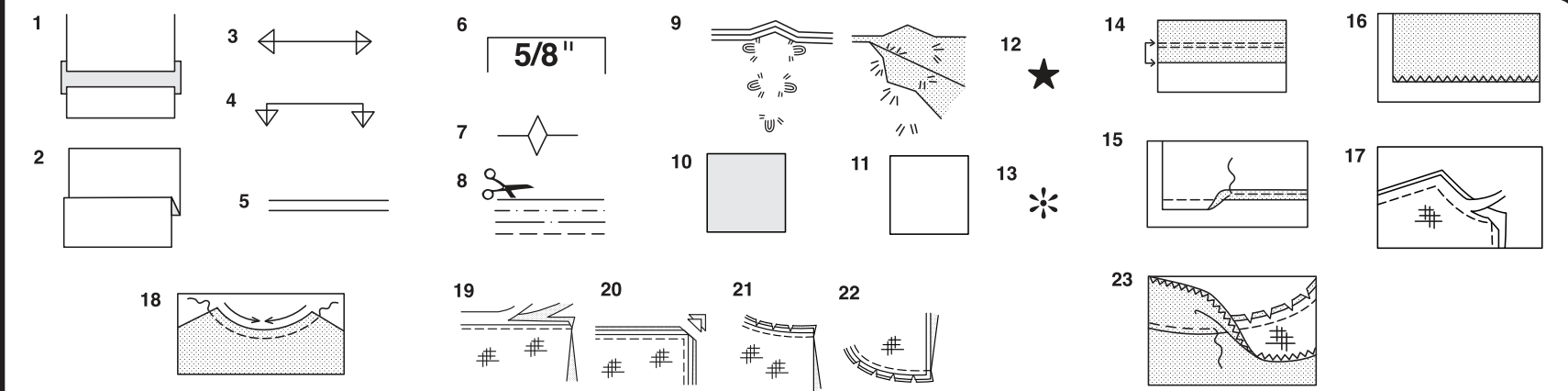
Thank you for purchasing this New Look pattern. We made every effort to provide you with a high quality product. Gracias por haber comprado este patrón de New Look. Hemos hecho todos los esfuerzos para ofrecerle un producto de alta calidad.



5 PIECES



- 1 FRONT
- 2 BACK
- 3 SKIRT BACK
- 4 POCKET
- 5 SKIRT FRONT



### How To Use Your Multi Size Pattern

#### First Prepare Your Pattern

Select the pattern pieces according to the view you are making.

This pattern is made to body measurements with ease allowed for comfort and style. If your body measurements differ from those on the pattern envelope adjust the pieces before placing them on the fabric.

Check your back neck to waist and dress length, if necessary, alter the pattern. Lengthening and shortening lines are indicated.

1. **TO LENGTHEN** : Cut pattern between printed lines and place paper underneath. Spread pattern the required amount and pin to paper.
2. **TO SHORTEN** : Fold at the printed lines to form a pleat half the amount to be shortened, ie 1/2" (1.3cm) deep to shorten 1" (2.5cm).

#### Study Your Pattern Markings

3. **STRAIGHT GRAIN** : Place an even distance from selvage or a straight thread.
4. **FOLD** : Place on fold of fabric.
5. **LENGTHENING AND SHORTENING LINES**.
6. **SEAM ALLOWANCE** : 5/8" (1.5cm) unless otherwise stated.
7. **NOTCHES** : Match notches.
8. **CUTTING LINES** : Multi patterns have different cutting lines for different sizes.
9. **TAILOR-TACKS** : With double thread make two loose stitches forming loop through fabric layers and pattern leaving long ends. Cut loop to remove pattern. Snip thread between fabric layers. Leave tufts.

### Cutting Layouts

#### Cutting Directions

FOR FOLDED AND DOUBLE LAYER FABRIC - Place fabric with right side inside and pin pattern on wrong side of fabric.

FOR SINGLE LAYER - Pin pattern on right side of fabric. NOTE: Pattern pieces may interlock more closely for smaller sizes. Cut notches out from cutting line.

BEFORE removing pattern from fabric, transfer all pattern markings using tailor tacks or dressmaking tracing paper.

10. **KEY**: pattern printed side down
11. **KEY**: pattern printed side up
12. **KEY**: Cut out all pieces except pieces that extend beyond folded fabric, then open out fabric and on RIGHT side of fabric, cut in positions as shown.
13. **KEY**: For with and without nap layouts ensure fabric is placed with nap or design running in same direction.

Before pinning to fabric, press tissue pattern with a warm dry iron to remove creases.

#### Sewing Directions

Fabric Key	Right Side	Wrong Side	Interfacing	Lining

Sew garment following **Sewing Directions**.

**PIN** or machine-baste seams matching notches.

**STITCH** 5/8" (1.5cm) seams unless otherwise stated.

**PRESS** seams open unless otherwise indicated, clipping when necessary so seams will lie flat.

14. **EASE-STITCH** or **GATHER** - Loosen needle tension slightly. With RIGHT side up, stitch 5/8" (1.5cm) from cut edge using a long stitch. Stitch again 1/4" (6mm) away in the seam allowance.

**EDGE FINISH** - Neaten raw edges of seams, hems and facings using one of the following methods.

15. Stitch 1/4" (6mm) from edge, turn under along stitching and stitch.
16. Zig-zag or overlock raw edges.

17. **INTERFACING** — Pin interfacing to WRONG side of fabric. Cut across corners that will be enclosed with seams. Machine-baste 1/2" (1.3cm) from cut edge. (Shown only on first illustration). Trim interfacing close to machine-basting. For FUSIBLE interfacing, follow manufacturer's directions.

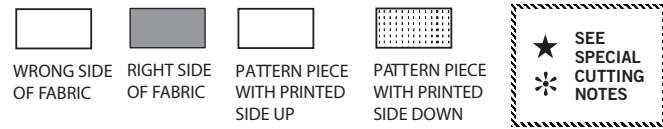
18. **STAY-STITCH** —Stitch 1/2" (1.3cm) from cut edge, in direction of arrows: (Shown only in the first illustration).

**LAYERING** — Trim seam allowance in layers.

19. Layer enclosed seams
20. Trim corners
21. Clip inner curves
22. Notch outer curves

23. **UNDERSTITCH** —Press facing away from garment; press seam toward facing. Facing side up, understitch close to seam through facing and seam allowances.

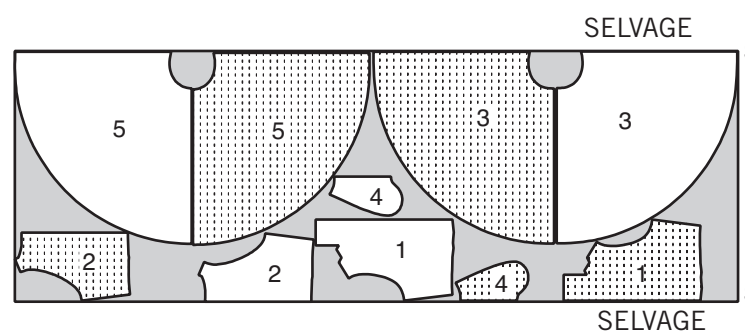
## Cutting Layouts



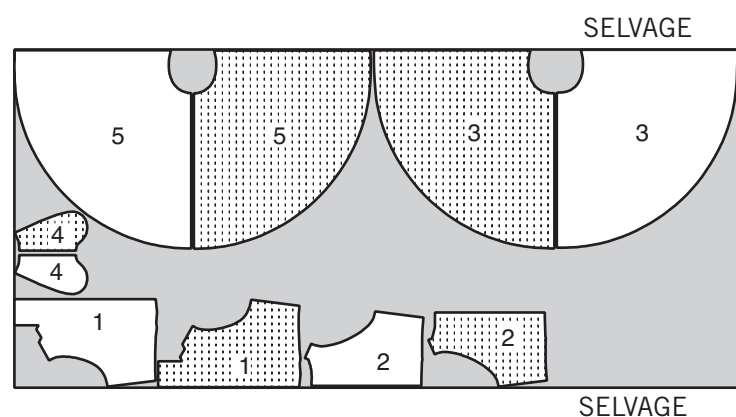
### DRESS A

USE PIECES 1 2 3 4 5

45" (115 CM)  
ALL SIZES



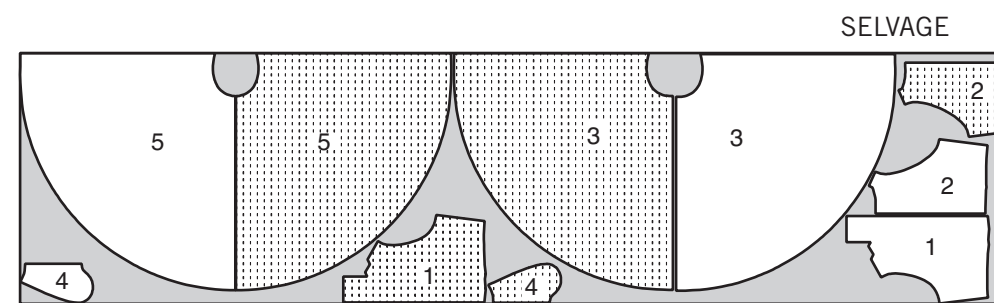
60" (150 CM)  
ALL SIZES



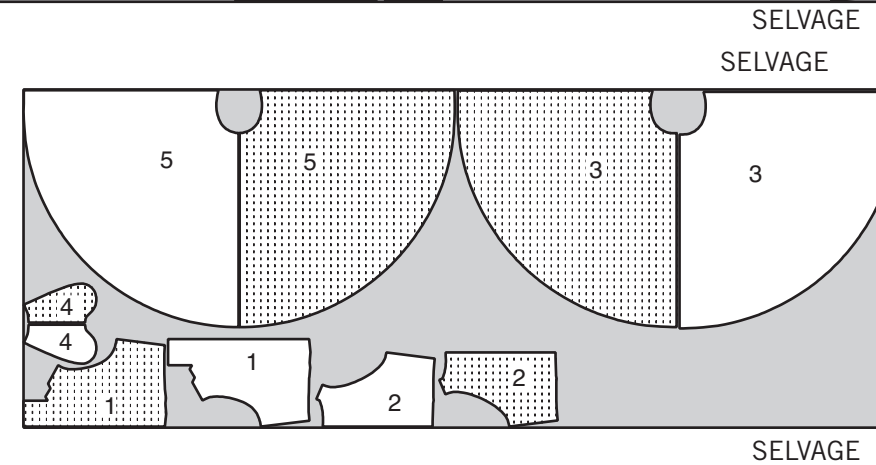
### DRESS B

USE PIECES 1 2 3 4 5

45" (115 CM)  
ALL SIZES



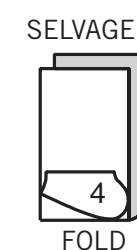
60" (150 CM)  
ALL SIZES



### LINING A,B

USE PIECE 4

45" (115 CM)  
ALL SIZES



## Español

### VESTIDO A

USE LAS PIEZAS 1 2 3 4 5

45" (115 CM)  
TODAS LAS TALLAS

60" (150 CM)  
TODAS LAS TALLAS

### VESTIDO B

USE LAS PIEZAS 1 2 3 4 5

45" (115 CM)  
TODAS LAS TALLAS

60" (150 CM)  
TODAS LAS TALLAS

### FORRO A,B

USE LA PIEZA 4

45" (115 CM)  
TODAS LAS TALLAS

SELVAGE= ORILLAS  
FOLD= DOBLEZ

Sewing terms appearing in bold type in sewing instructions are explained below.

**FINISH** - stitch 1/4" (6mm) from raw edge and finish with one of the following: (1) pink or (2) overcast or (3) turn in along stitching and stitch close to fold or (4) overlock.

**OPTIONAL FOR HEMS:** apply seam binding.

**REINFORCE** - stitch along seamline where indicated in sewing instructions, using small machine stitches.

**SLIPSTITCH** - slide needle through a folded edge, then pick up a thread of underneath fabric.

**STAYSTITCH** - stitch 1/8" (3mm) from seamline in seam allowance (usually 1/2" (13mm) from raw edge).

**DRESS A,B**

**NOTE:** Illustrated in shorter length.

**BODICE**

1. **REINFORCE** inner corner of BODICE FRONT (1), pivoting at upper large circle, as shown. Clip to large circle.

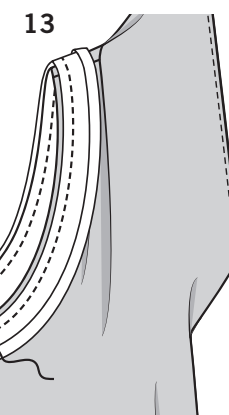
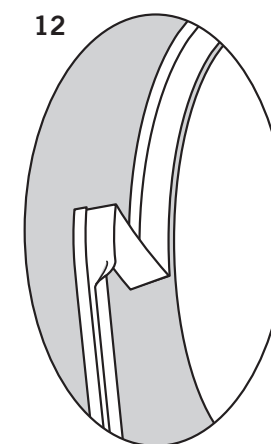
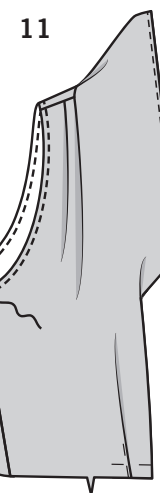
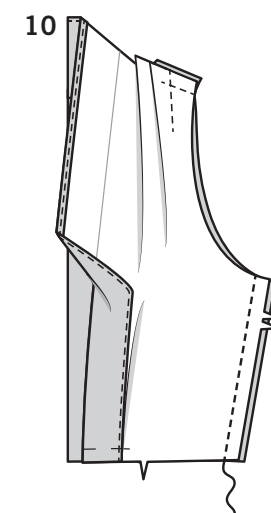
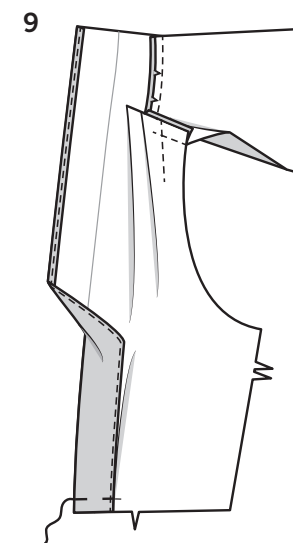
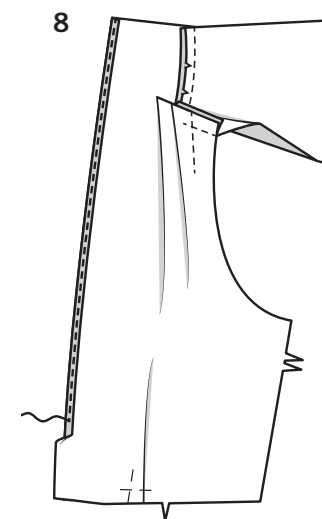
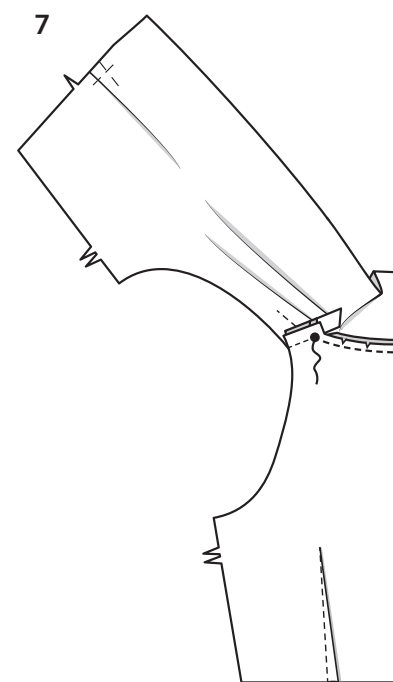
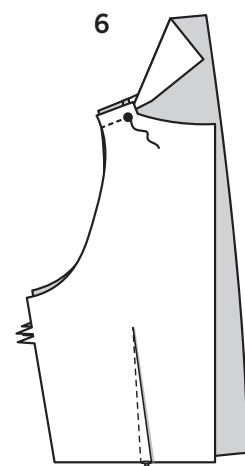
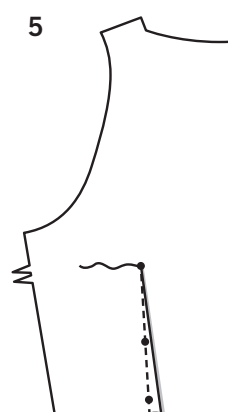
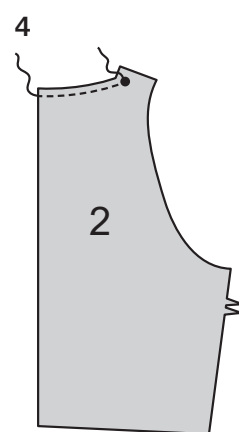
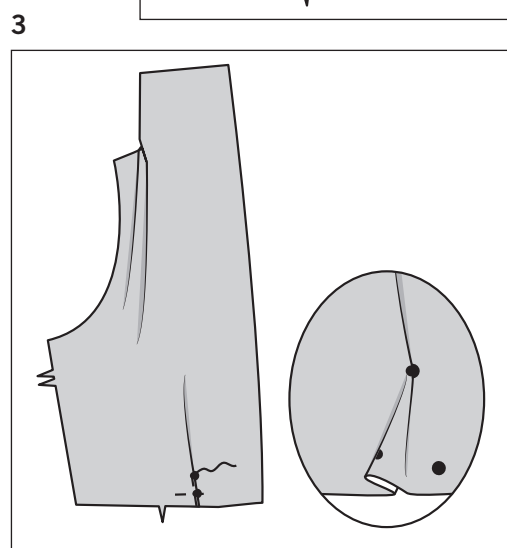
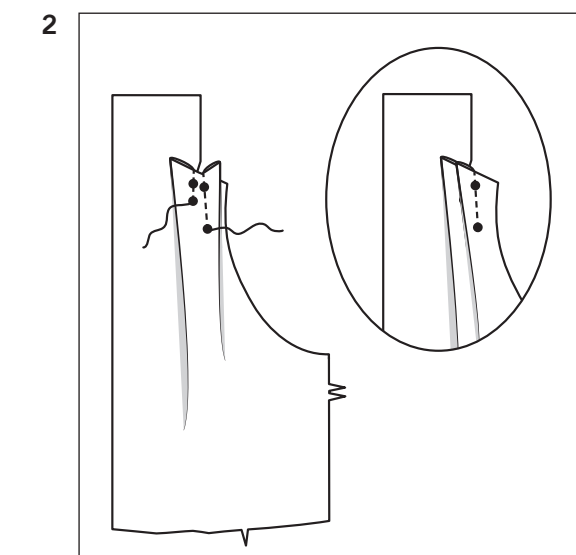
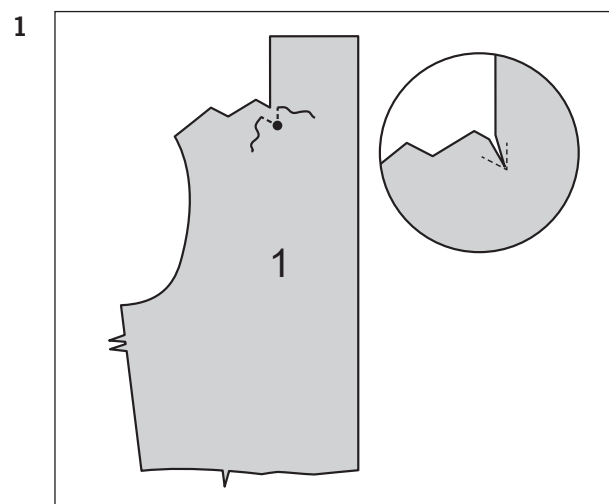
2. To make shoulder pleats, on inside, bring lines of large circles together; baste. Stitch to lower circles. Press pleats toward collar.

3. To make lower pleats in front, on outside, crease along lines of small circles. Bring creases to lines of large circles; baste. Baste across lower edge. Press.

4. **STAYSTITCH** neck edge of BODICE BACK (2).

5. Stitch dart in back. Press toward center.

6. Stitch bodice front to bodice back at shoulders, ending at clip.



7. Pin front to back at neck edge, clipping back neck edge where necessary. Baste. Stitch in 3/8"(1cm) seam between large circles. Press seam toward collar.

8. Turn in 3/8"(1cm) on outer edge of bodice front self facing. Press. Stitch.

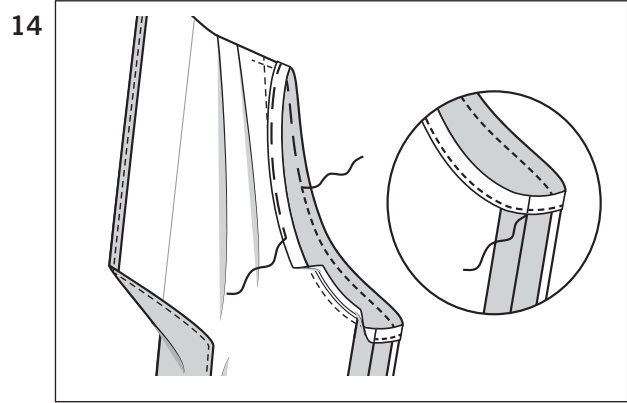
9. Turn self facing to inside along foldline. Press. Baste lower edges.

10. Stitch bodice front to bodice back at sides.

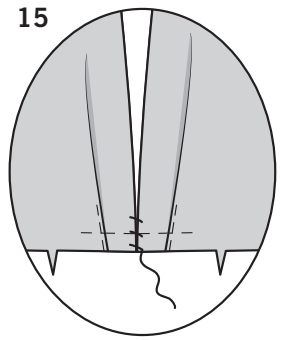
11. To prevent armhole edge from stretching, stitch 1/4"(6mm) from raw edge.

12. Open out one folded edge of bias tape; press out crease by pressing lightly.

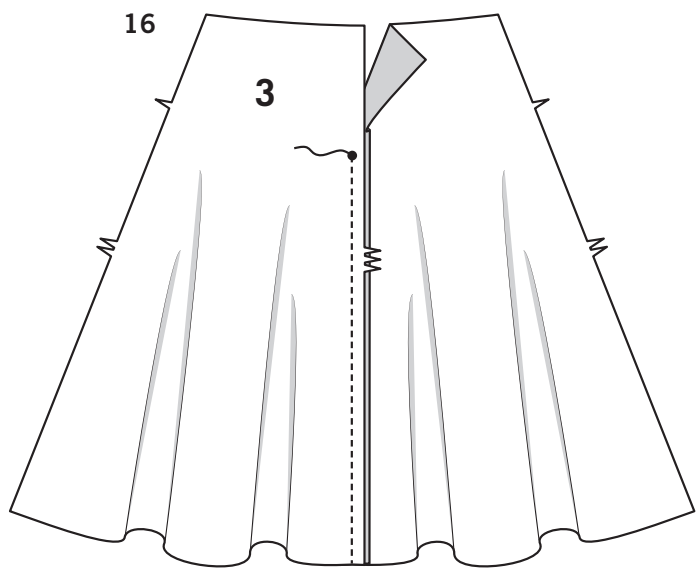
13. Pin bias tape to armhole edge, having raw edges even, turning in ends to meet at side seam, as shown. Stitch in 3/8"(1cm) seam. Trim seam to a scant 1/4"(6mm).



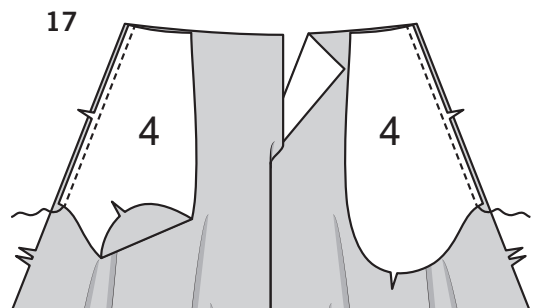
**14.** Turn bias tape to inside along seam. Press. Baste in place. **SLIPSTITCH** ends. On outside, stitch close to basted edge.



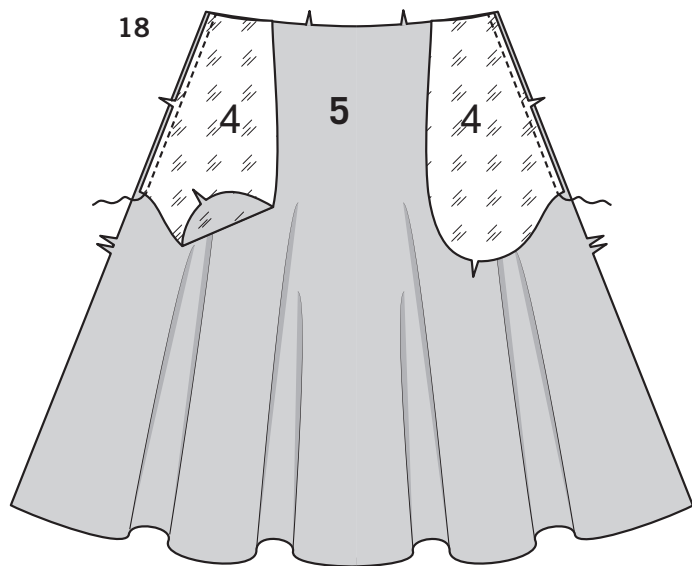
**15.** Bring center front edges of bodice together. Whipstitch seam allowances, as shown.



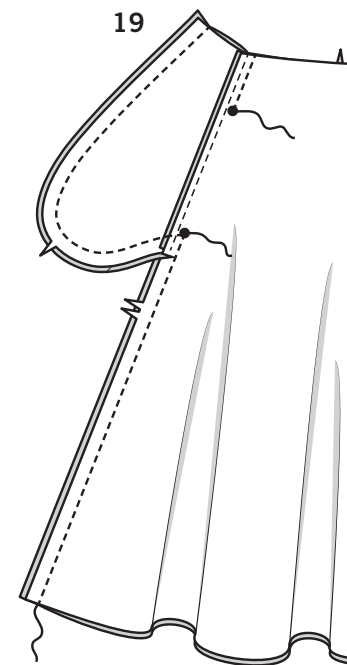
**16.** Pin **SKIRT BACK (3)** sections together at center back. Stitch, leaving open above large circle.



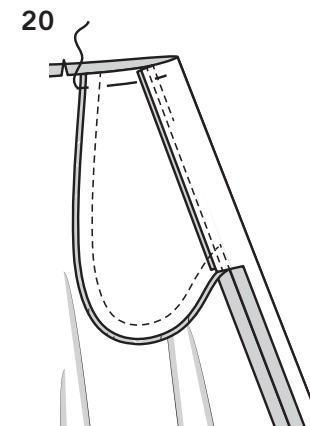
**17.** Stitch one **POCKET (4)** section (fabric) to skirt back at each side in 1/4"(6mm) seam. Press seams towards pockets.



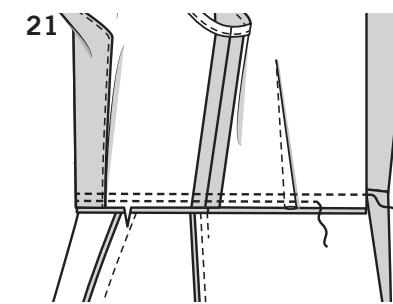
**18.** Stitch one **POCKET** section (lining) to **SKIRT FRONT (5)** at each side in 1/4"(6mm) seam. Press seams toward pockets.



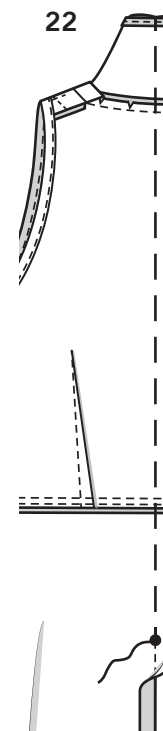
**19.** Stitch skirt front and back together at sides, leaving open between large circles. Stitch pocket edges together to side seams. Clip back seam allowances below pockets.



**20.** Turn pockets toward front along seamlines; press. Baste upper edges.



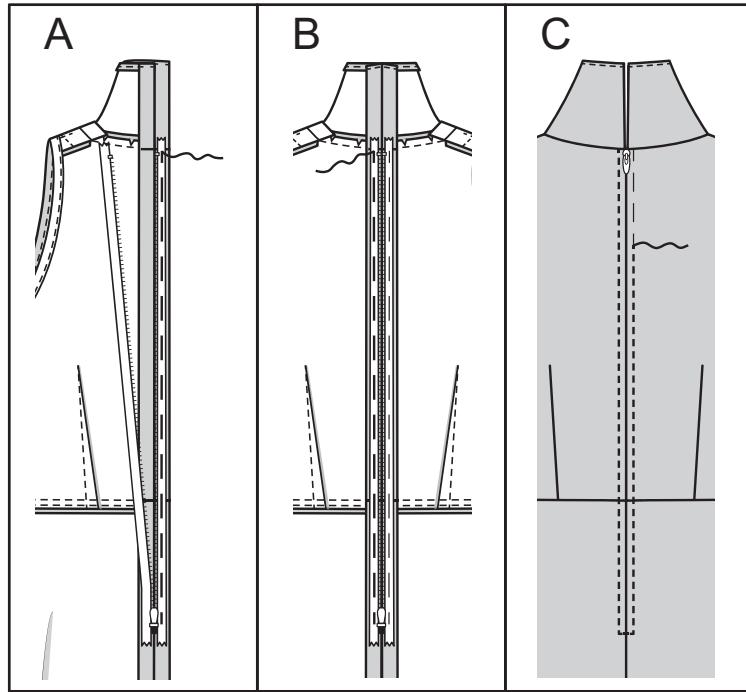
**21.** Pin bodice to skirt, matching centers. Stitch. Stitch again 1/4"(6mm) away in seam allowance. Trim close to stitching. Press seam toward skirt.



**22.** Baste back opening edges together along seamline above large circle. Press.

**SKIRT**

23



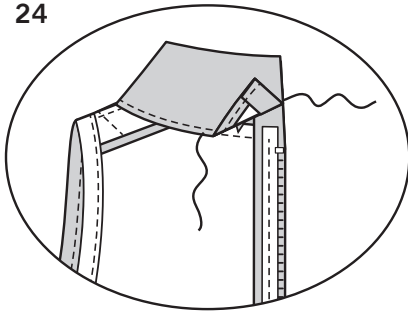
**23.(A)** Open zipper; place face down on extended seam allowance, placing zipper stop at large circle and zipper teeth on seamline. Baste in center of zipper tape, keeping back free.

**(B)** Close zipper; turn pull tab up. Spread back flat. Baste a scant 1/4"(6mm) from zipper teeth and across lower edge.

**(C)** On outside, stitch along basting through all thicknesses, as shown, using a zipper foot. Remove basting.

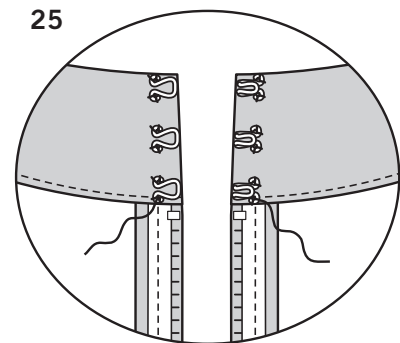
## FINISHING

24



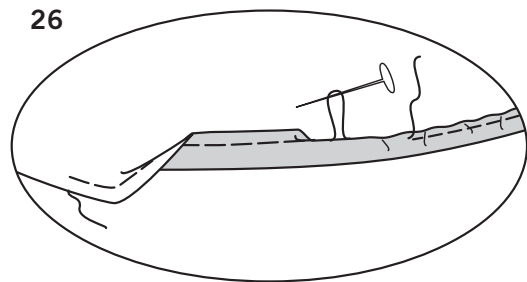
**24.** Turn collar to inside along foldline, placing finished edge over neck seam. Press. **SLIPSTITCH** center back edges and between center back.

25



**25.** Sew hook and eyes to back opening edges of collar above zipper.

26



**26.** Allow dress to hang for 24 hours before hemming to permit bias to set. Try on dress; re-mark hem. Trim lower edge to within 5/8"(1.5cm) of marking. Using a long machine stitch, stitch 1/4 (6mm) from raw edge. Turn up 5/8"(1.5cm) hem at lower edge of dress, turning in 1/4"(6mm) on raw edge. Pull thread to ease in fullness. Stitch. Press.

## VESTIDOS A, B

**NOTA.** Las ilustraciones son presentadas en tamaño más pequeño.

### CORPIÑO

- 1. REFUERCE** la esquina interior del FRENTE DEL CORPIÑO (1), girando en el círculo grande superior, tal como se muestra. Corte hasta el círculo grande.
- Para hacer los pliegues en los brazos, en el interior, lleve conjuntamente las líneas de los círculos grandes; hilvane. Cosa hasta los círculos pequeños. Planche los pliegues hacia el cuello.
- Para hacer los pliegues inferiores en el frente, en el exterior, haga pliegues a lo largo de las líneas de los círculos pequeños. Lleve los pliegues a las líneas de los círculos grandes; hilvane. Hilvane a través del borde inferior. Planche.
- HAGA PUNTADA DE SOSTEN** al borde del escote de la ESPALDA DEL CORPIÑO (2).
- Cosa la pinza en la espalda. Planche hacia el centro.
- Cosa el frente a la espalda del corpiño a lo largo de los hombros, terminando en el corte.
- Sujete con alfileres el frente a la espalda en el borde del escote, haciendo cortes en el borde del escote trasero, donde se considere necesario. Hilvane. Cosa en una costura de 3/8"(1cm), entre los círculos grandes. Planche la costura hacia el cuello.
- Voltee una costura de 3/8"(1cm), sobre el borde exterior de la vista enfrentada frontal del corpiño. Planche. Cosa.
- Voltee la vista enfrentada al interior y a lo largo de la línea del doblez. Planche. Hilvane los bordes inferiores.
- Cosa el frente a la espalda del corpiño por los lados.
- Para prevenir el estiramiento del borde de debajo de los brazos, cosa a 1/4"(6mm) del borde no terminado.
- Abra un borde doblado de la cinta de bias; planche el pliegue con plancha tibia.
- Sujete con alfileres la cinta de bias al borde de debajo de los brazos, emparejando los bordes no terminados, volteando en los extremos hasta unirse en la costura lateral, como se muestra. Cosa en una costura de 3/8"(1cm). Recorte la costura a escasos 1/4"(6mm).
- Voltee la cinta de bias al interior u a lo largo de la costura. Planche. Hilvane en su lugar. **HAGA PUNTADA FALSA** en los extremos. En el EXTERIOR, cosa cerca del borde hilvanado.
- Lleve conjuntamente los bordes frontales centrales del corpiño. Haga costura de escapulario en los márgenes de la costura, como se muestra.

### FALDA

- Sujete con alfileres conjuntamente las secciones de la PARTE TRASERA DE LA FALDA (3) en la parte trasera central. Cosa, dejando abierto por encima del círculo grande.
- Cosa una sección (de tela) del BOLSILLO (4), a la parte trasera de la falda, con una costura de 1/4"(6mm) a cada lado. Planche las costuras hacia los bolsillos.

**18.** Cosa una sección (forro) del BOLSILLO, al FRENTE DE LA FALDA (5) en una costura de 1/4"(6mm) a cada lado. Planche las costuras hacia los bolsillos.

**19.** Cosa conjuntamente el frente de la falda y la parte trasera en los lados, dejando una abertura entre los círculos grandes. Cosa conjuntamente los bordes del bolsillo a las costuras laterales. Corte los márgenes de la costura por debajo de los bolsillos.

**20.** Voltee los bolsillos hacia el frente a lo largo de las líneas de la costura; planche. Hilvane los bordes superiores.

**21.** Sujete con alfileres el corpiño a la falda, casando los centros. Cosa. Cosa de nuevo a 1/4"(6mm) a distancia del margen de la costura. Recorte cerca de la puntada. Planche la costura hacia la falda.

**22.** Hilvane conjuntamente los bordes abiertos traseros, a lo largo de la línea de la costura y por encima del círculo grande. Planche.

**23.(A)** Abra la cremallera; colóquela extendida cara abajo sobre el margen de la costura, colocando el tope de la cremallera en el círculo grande y los dientes de la cremallera en la línea de la costura. Hilvane en el centro de la cinta de la cremallera, manteniendo libre la parte trasera.

**(B)** Cierre la cremallera; voltee la jaladera hacia arriba.

Distribuya plana la parte trasera.

Hilvane a escasos 1/4"(6mm) de los dientes de la cremallera y a través del borde inferior.

**(C)** En el exterior, cosa a lo largo del hilvanado y a través de todos los grosores, como se muestra, usando un pie para cremallera. Retire el hilvanado.

### TERMINADO

**24.** Voltee el cuello al interior y a lo largo de la línea del doblez, colocando el borde terminado sobre la costura del escote. Planche. **HAGA PUNTADA FALSA** a los bordes traseros centrales y entre la parte trasera central.

**25.** Cosa los broches de presión en los bordes abiertos del cuello y por encima del tope de la cremallera.

**26.** Deje colgado el vestido durante 24 horas antes de dobladillarlo, a fin de permitir que la cinta de bias se asiente. Pruébese el vestido y remarque la altura deseada del dobladillo. Recorte el borde inferior hasta dentro de 5/8"(1.5cm) de las marcas. Usando una costura larga de la maquina, cosa a 1/4"(6mm) desde el borde no terminado. Voltee hacia arriba un dobladillo de 5/8"(1.5cm) en el borde inferior del vestido, volteando a 1/4"(6mm) sobre el borde no terminado. Hale de las puntadas fruncidas en la totalidad. Cosa. Planche.