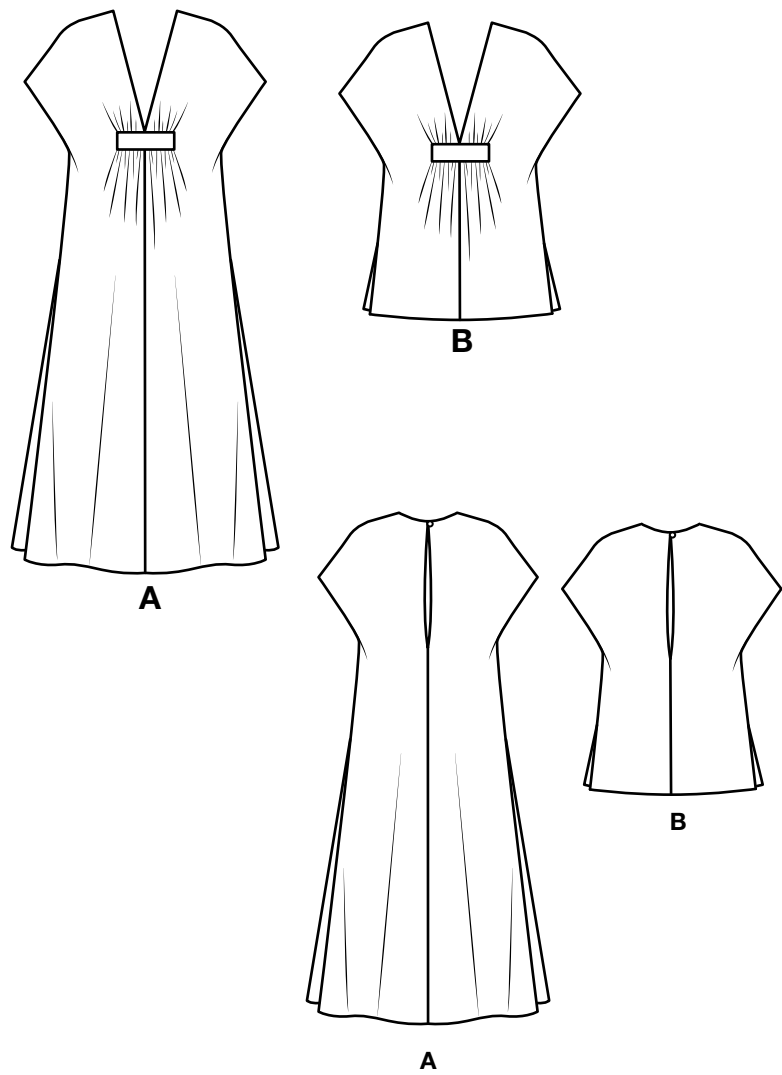


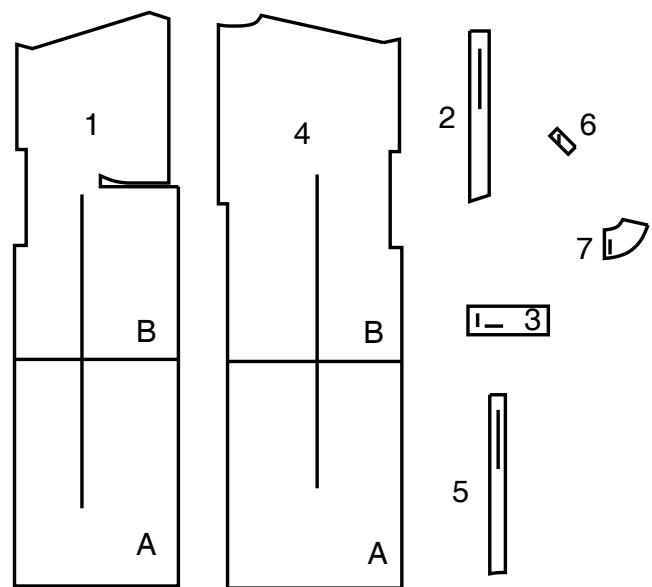
NEW LOOK® N6795

www.simplicity.com info@simplicity.com 1-888-588-2700

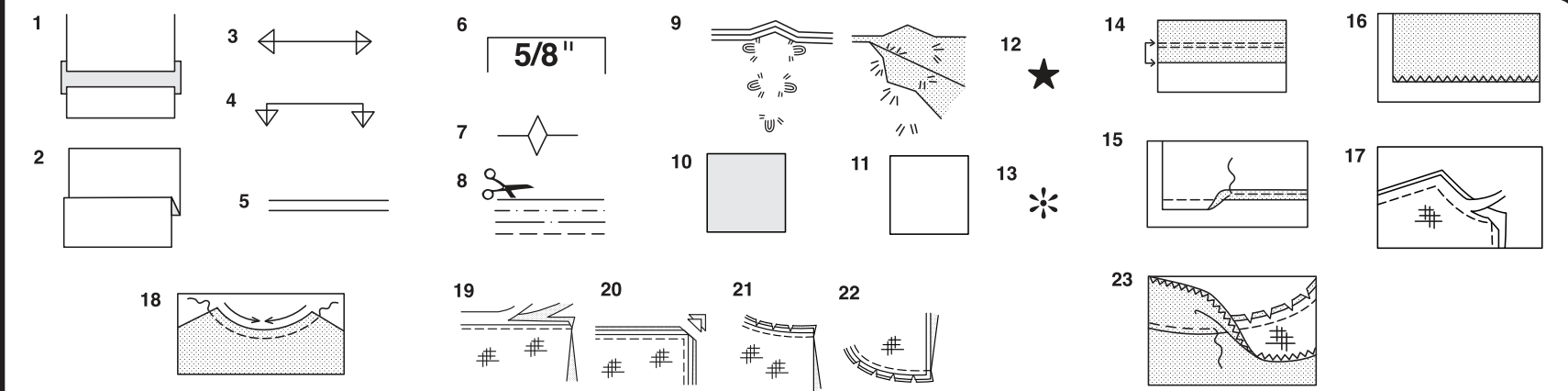
Thank you for purchasing this New Look pattern. We made every effort to provide you with a high quality product. Gracias por haber comprado este patrón de New Look. Hemos hecho todos los esfuerzos para ofrecerle un producto de alta calidad.



7 PIECES



- | | |
|---------------------|---------------------------------|
| 1 Front | 1 Front |
| 2 Front Interfacing | 2 Frente de la Entretela |
| 3 Front Band | 3 Banda de el Frente |
| 4 Back | 4 Espalda |
| 5 Back Interfacing | 5 Parte trasera de la Entretela |
| 6 Loop | 6 Presilla |
| 7 Back Neck Facing | 7 Vista de el Escote Trasero |



How To Use Your Multi Size Pattern

First Prepare Your Pattern

Select the pattern pieces according to the view you are making.

This pattern is made to body measurements with ease allowed for comfort and style. If your body measurements differ from those on the pattern envelope adjust the pieces before placing them on the fabric.

Check your back neck to waist and dress length, if necessary, alter the pattern. Lengthening and shortening lines are indicated.

- TO LENGTHEN** : Cut pattern between printed lines and place paper underneath. Spread pattern the required amount and pin to paper.
- TO SHORTEN** : Fold at the printed lines to form a pleat half the amount to be shortened, ie 1/2" (1.3cm) deep to shorten 1" (2.5cm).

Study Your Pattern Markings

- STRAIGHT GRAIN** : Place an even distance from selvage or a straight thread.
- FOLD** : Place on fold of fabric.
- LENGTHENING AND SHORTENING LINES**.
- SEAM ALLOWANCE** : 5/8" (1.5cm) unless otherwise stated.
- NOTCHES** : Match notches.
- CUTTING LINES** : Multi patterns have different cutting lines for different sizes.
- TAILOR-TACKS** : With double thread make two loose stitches forming loop through fabric layers and pattern leaving long ends. Cut loop to remove pattern. Snip thread between fabric layers. Leave tufts.

Cutting Layouts

Cutting Directions

FOR FOLDED AND DOUBLE LAYER FABRIC - Place fabric with right side inside and pin pattern on wrong side of fabric.

FOR SINGLE LAYER - Pin pattern on right side of fabric. NOTE: Pattern pieces may interlock more closely for smaller sizes. Cut notches out from cutting line.

BEFORE removing pattern from fabric, transfer all pattern markings using tailor tacks or dressmaking tracing paper.

- KEY**: pattern printed side down
- KEY**: pattern printed side up
- KEY**: Cut out all pieces except pieces that extend beyond folded fabric, then open out fabric and on RIGHT side of fabric, cut in positions as shown.
- KEY**: For with and without nap layouts ensure fabric is placed with nap or design running in same direction.

Before pinning to fabric, press tissue pattern with a warm dry iron to remove creases.

Sewing Directions

Fabric Key	Right Side	Wrong Side	Interfacing	Lining

Sew garment following **Sewing Directions**.

PIN or machine-baste seams matching notches.

STITCH 5/8" (1.5cm) seams unless otherwise stated.

PRESS seams open unless otherwise indicated, clipping when necessary so seams will lie flat.

14. EASE-STITCH or **GATHER** - Loosen needle tension slightly. With **RIGHT** side up, stitch 5/8" (1.5cm) from cut edge using a long stitch. Stitch again 1/4" (6mm) away in the seam allowance.

EDGE FINISH - Neaten raw edges of seams, hems and facings using one of the following methods.

- Stitch 1/4" (6mm) from edge, turn under along stitching and stitch.
- Zig-zag or overlock raw edges.

17. INTERFACING — Pin interfacing to **WRONG** side of fabric. Cut across corners that will be enclosed with seams. Machine-baste 1/2" (1.3cm) from cut edge. (Shown only on first illustration). Trim interfacing close to machine-basting. For **FUSIBLE** interfacing, follow manufacturer's directions.

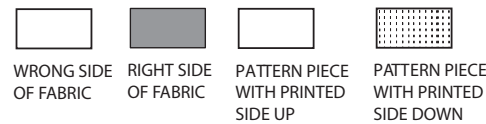
18. STAY-STITCH —Stitch 1/2" (1.3cm) from cut edge, in direction of arrows: (Shown only in the first illustration).

LAYERING — Trim seam allowance in layers.

- Layer enclosed seams
- Trim corners
- Clip inner curves
- Notch outer curves

23. UNDERSTITCH —Press facing away from garment; press seam toward facing. Facing side up, understitch close to seam through facing and seam allowances.

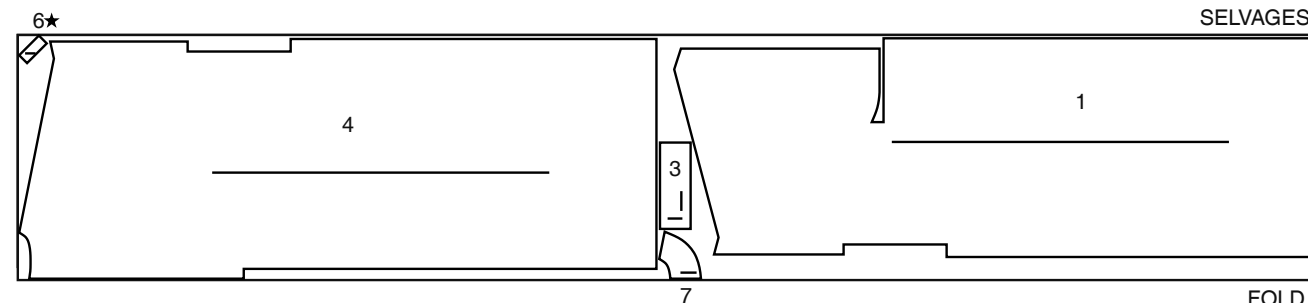
Cutting Layouts



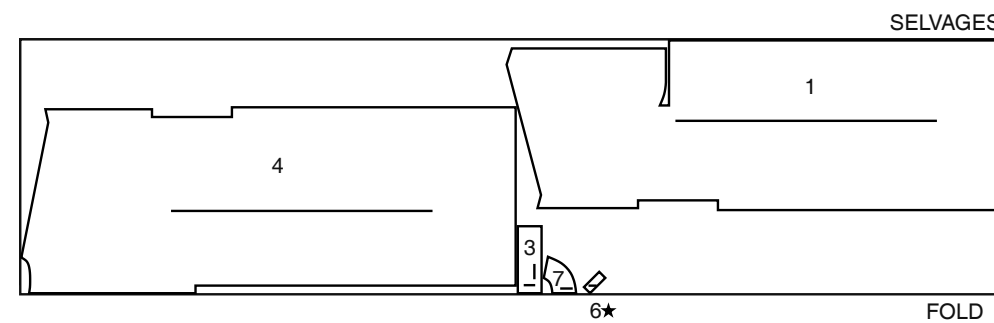
CAFTAN A

USE PIECES 1 3 4 6 7

45" (115CM) WITH NAP ALL SIZES



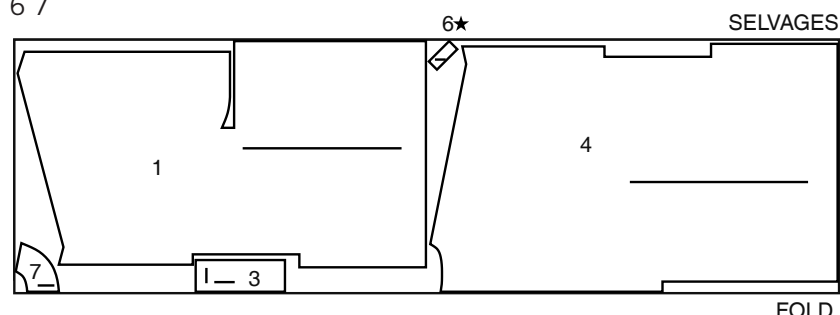
60" (150CM) WITH NAP ALL SIZES



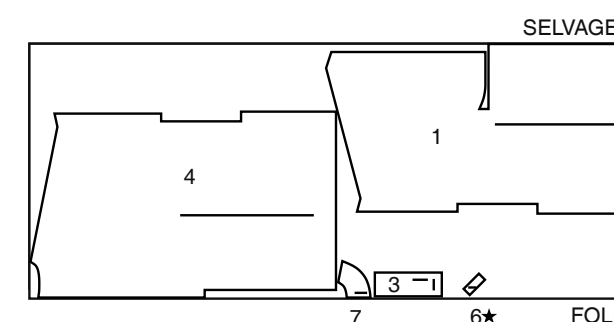
CAFTAN B

USE PIECES 1 3 4 6 7

45" (115CM) WITH NAP ALL SIZES



60" (150CM) WITH NAP ALL SIZES



Español

ENTRETELA A, B

USE LAS PIEZAS 2 3 5 7

20" (51CM) SIN PELUSA TODAS LAS TALLAS

CAFTAN A

USE LAS PIEZAS 1 3 4 6 7

45" (115CM) CON PELUSA TODAS LAS TALLAS

60" (150CM) CON PELUSA TODAS LAS TALLAS

CAFTAN B

USE LAS PIEZAS 1 3 4 6 7

45" (115CM) CON PELUSA TODAS LAS TALLAS

60" (150CM) CON PELUSA TODAS LAS TALLAS

SELVAGES= ORILLAS
FOLD= DOBLEZ

- PIN OR MACHINE-BASTE SEAMS MATCHING NOTCHES.
- STITCH 5/8" (1.5CM) SEAMS WITH RIGHT SIDES TOGETHER UNLESS OTHERWISE STATED.
- PRESS SEAMS OPEN UNLESS OTHERWISE INDICATED, CLIPPING WHEN NECESSARY SO SEAMS WILL LIE FLAT.

GLOSSARY OF SEWING METHODS

Sewing methods shown in *ITALICS* are defined below:

EASE/GATHER – Loosen needle tension slightly. With **RIGHT** side up, stitch 5/8" (1.5cm) from cut edge using a long stitch. Stitch again 1/4" (6mm) from the first stitching within the seam allowance. For ease and gathers slide fabric along under threads.

EDGE FINISH – Neaten raw edges of seams, hems and facings using one of the following methods:

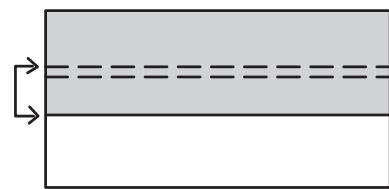
- Stitch 1/4" (6mm) from edge, turn under edge along stitching and stitch.
- Zig-zag or overlock raw edges.

INTERFACING – Pin interfacing to **WRONG** side of fabric. Cut across corners that will be enclosed with seams. Machine-baste 1/2" (1.3cm) from cut edge. (Shown only in the first diagram.) Trim interfacing close to machine-basting. For **FUSIBLE** interfacing, follow manufacturer's directions.

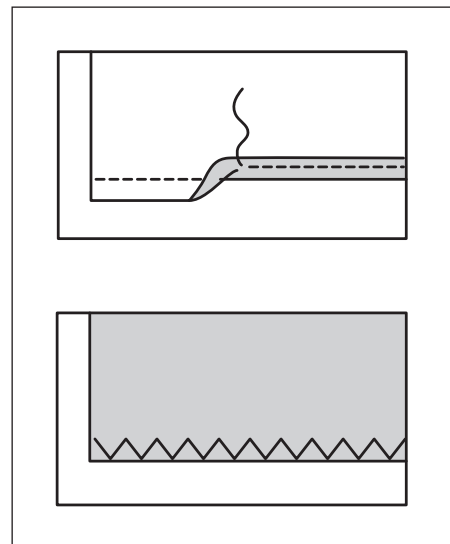
STAY-STITCH – Stitch 1/2" (1.3cm) from cut edge in direction of arrows. This stitching stays in permanently to prevent stretching on curved edges. (Shown only in the first illustration.)

LAYERING – Trim seam allowances in layers.

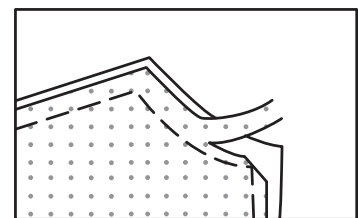
UNDERSTITCH – Press facing away from garment; press seam toward facing. Facing side up, understitch close to seam through facing and seam allowances.



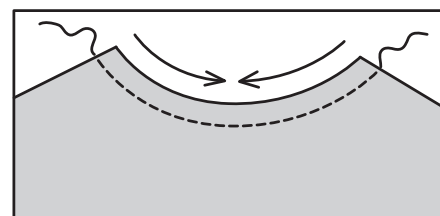
EASE/GATHER



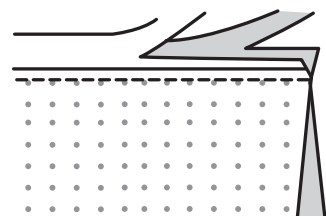
EDGE FINISH



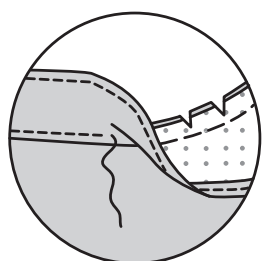
INTERFACING



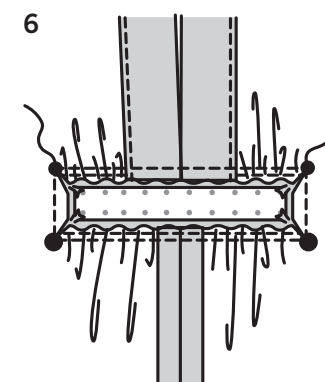
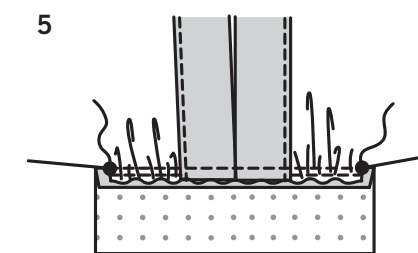
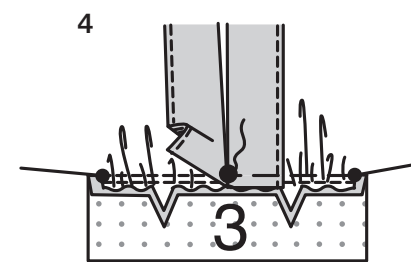
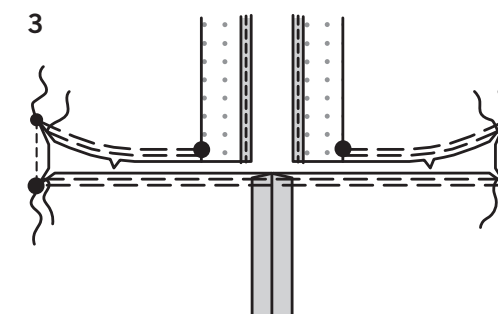
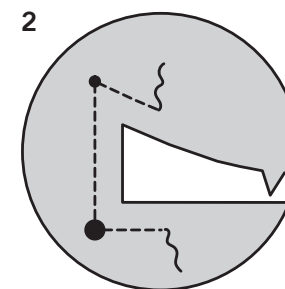
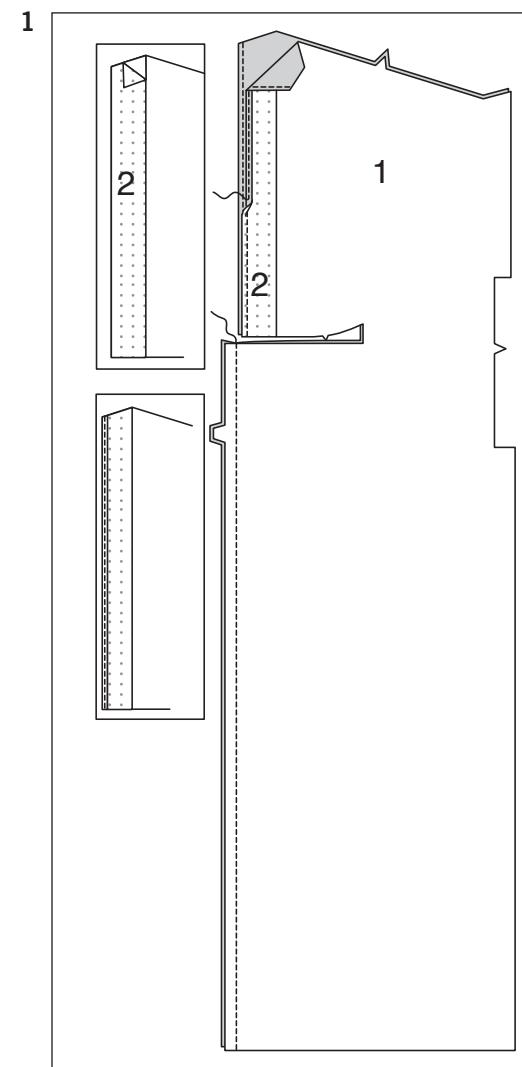
STAY-STITCH



LAYERING



UNDERSTITCH



PATTERN PIECES WILL BE IDENTIFIED BY NUMBERS THE FIRST TIME THEY ARE USED.

CAFTAN A, B

FRONT AND FRONT BAND

- Apply **INTERFACING** FRONT INTERFACING (2) to FRONT (1) extensions.
EDGE FINISH front extensions.
Stitch center front seam.

- To reinforce inner corners at small and large dots, machine-stitch 3/8" (1cm) from cut edges, as shown.

- Clip to dots at inner corners.
To gather the cut out area at center front, stitch 3/8" (1cm) from notched edges between small and large dots and 1/8" (3mm) **INSIDE** first stitching. Gather lower edge between large dots in same manner.

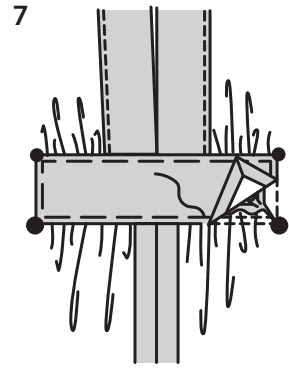
- Apply **INTERFACING** to FRONT BAND (3).
With **RIGHT** sides together, pin notched edge of band to upper edge of cut out area, matching centers, small dots and notches. Pull up gathering stitches to fit, keeping front extensions free; pin. Turn facing to **INSIDE** along fold line over gathers; baste.

- Stitch in a 3/8" (1cm) seam between small dots.

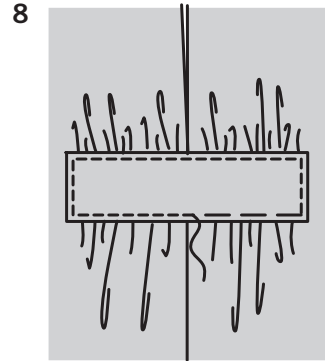
- Pin unnotched edges of band to remaining cut out edge, matching centers and large and small dots.
Pull up gathering stitches to fit; pin.
Baste between large dots.
Stitch in 3/8" (1cm) seam between small dots, pivoting at large dots.

N6795

3 of 4

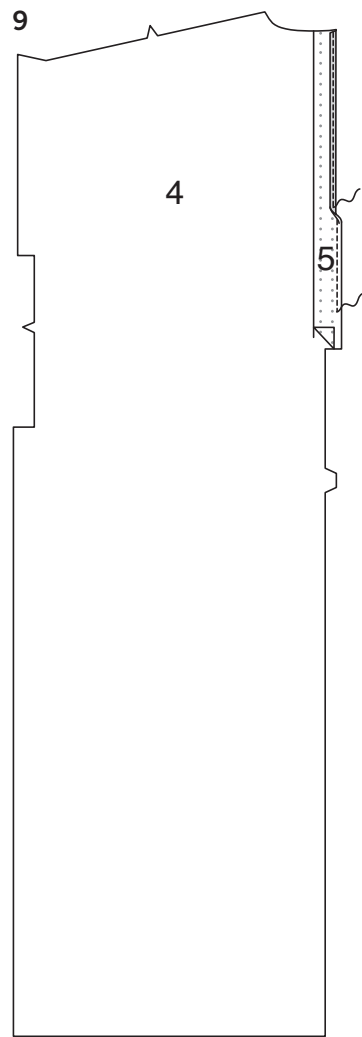


- 7.** Press under edges of band facing, folding in fullness at corners. On **INSIDE**, pin **WRONG** side of band facing to **WRONG** side of front, matching centers, small and large dots. Baste close to all edges of band, as shown.



- 8.** On **OUTSIDE**, stitch, as basted.

BACK, LOOP AND BACK FACING



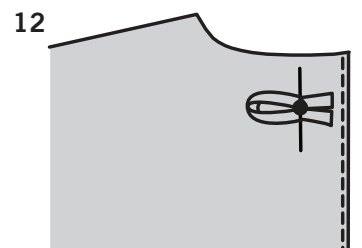
- 9.** Apply **INTERFACING** **BACK INTERFACING** (5) to **BACK** (4) extension.
EDGE FINISH back extension.



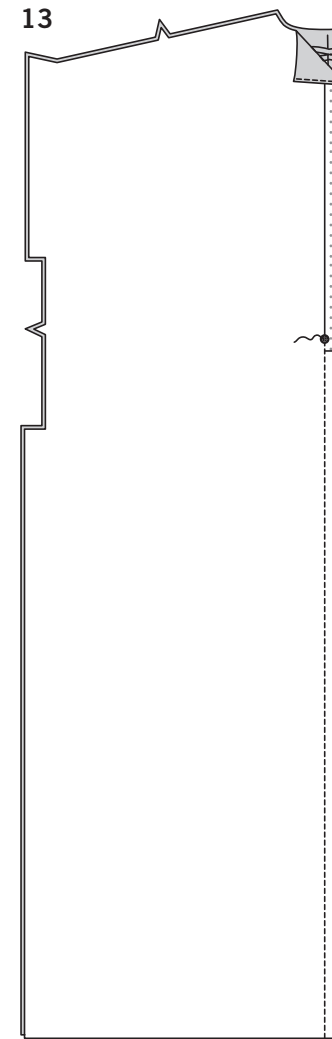
- 10.** Fold **LOOP** (6) in half, lengthwise, with **RIGHT** sides together. Stitch a scant 1/4" (6mm) from fold edge, stretching loop while stitching.
With a needle, attach a strong thread to one end of loop.



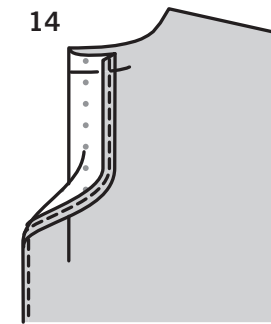
- 11.** Draw needle, eye forward through fold, turning loop **RIGHT** side out.



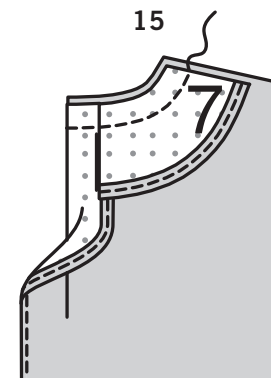
- 12.** On **OUTSIDE**, baste folded loop to **LEFT** back, centering it over small dot, having raw ends extend 5/8" (1.5cm) beyond center back line, as shown.
Stitch loop in place along center back line.



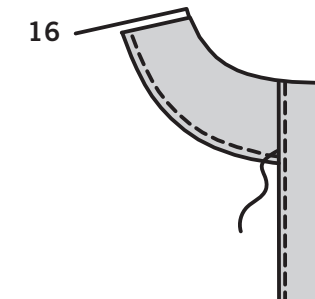
- 13.** Stitch center back seam of back sections together from lower edge to large dot. Back-stitch at large dot to reinforce.



- 14.** Turn back extensions to **OUTSIDE** along fold line forming facings. Baste to neck edge.

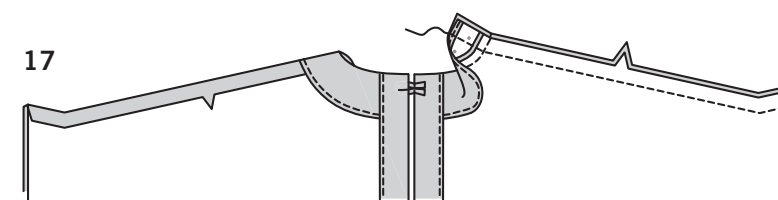


- 15.** Apply **INTERFACING** to **BACK NECK FACING** (7).
EDGE FINISH long unnotched edge.
With **RIGHT** sides together, pin facing to neck edge, having raw edges even and having neck facing lap over back facing, as shown.
Stitch neck edge.
LAYER seam.



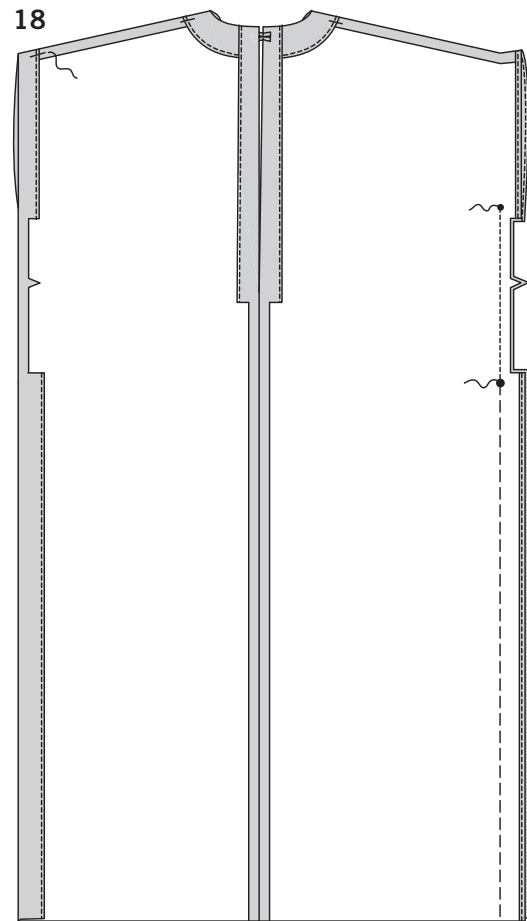
- 16.** Turn facings to **INSIDE**; press.
Slip-stitch facings together at back ends.

SHOULDER SEAMS



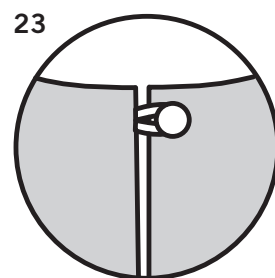
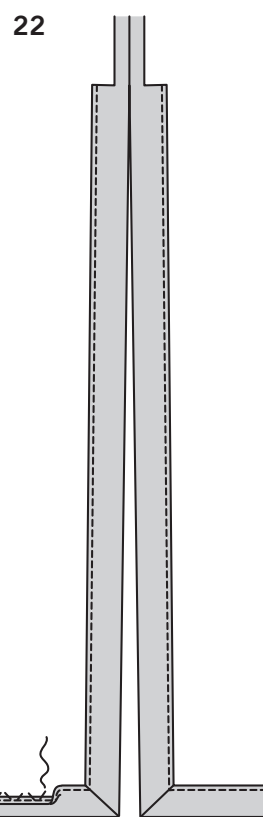
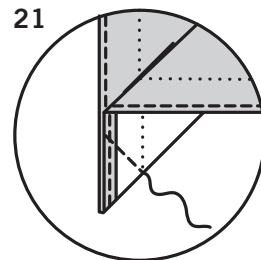
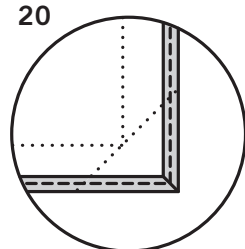
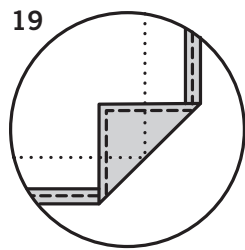
- 17.** Open out facings at shoulder edges.
Stitch front to back at entire shoulder seams.
Turn facings back to **INSIDE**.
Tack facing to shoulder seams.

SIDE SEAMS AND FINISHING ARMHOLE EDGES



- 18. EDGE FINISH** outer edge of side and armhole extensions.
To form slit opening and stitch side seams, with RIGHT sides together, pin front to back at side seams, matching small and large dots.
Starting at lower edge, machine-baste along solid line.
Stitch from large dot to small dot. Back-stitch at dots to reinforce seam.
Press seam and slit openings open, pressing sleeve extensions to INSIDE along solid lines, forming facings.
Tack facing to shoulder seams.

HEM AND SLIT OPENINGS



- 19.** Remove side bastings.
Open out side extensions at lower edge.
EDGE FINISH raw edges of hem.
Press up hem on lower and slit opening edges.
Open out hem.
Turn corners to INSIDE diagonally where crease lines cross; press.
- 20.** Open out corners.
- 21.** Fold garment diagonally through the corner so that crease lines meet, as shown.
Stitch on the diagonal crease line.
Trim the corner seam allowance and press open.
- 22.** Turn hem and slit openings to INSIDE; press.
Slip-stitch hem and slit openings in place.
Avoid stitches showing on OUTSIDE.

FINISHING

- 23.** Bring back edges together.
Sew button under loop.

CÁFTAN A, B

FRENTE Y BANDA FRONTAL

- Aplique **ENTRETELA** FRONTAL (2) a las extensiones del FRENTE (1). **TERMINE EL BORDE** de las extensiones del frente.
Cosa la costura frontal central.
- Para reforzar las esquinas interiores en los puntos pequeños y grandes, cosa a máquina a 3/8" (1cm) de los bordes cortados, tal como se muestra.
- Corte hasta los puntos en las esquinas interiores.
Para fruncir el área cortada en el frente central, cosa a 3/8" (1cm) de los bordes con muescas, entre los puntos pequeños y grandes y a 1/8" (3mm) al INTERIOR de la puntada previa.
Frunza el borde inferior entre los puntos grandes, de la misma manera.
- Aplique **ENTRETELA** a la BANDA FRONTAL (3).
DERECHO CON DERECHO, sujete con alfileres el borde con muescas de la banda, al borde superior del área cortada, casando los centros, los puntos pequeños y las muescas.
Hale de las puntadas fruncidas para ajustar, manteniendo libres las extensiones frontales; sujete con alfileres.
Voltee la vista al INTERIOR, a lo largo de la línea del doblez sobre los fruncidos; hilvane.
- Cosa en una costura de 3/8" (1cm) entre los puntos pequeños.
- Sujete con alfileres los bordes sin muescas de la banda, al borde cortado restante, casando los centros y los puntos grandes y pequeños.
Hale de las puntadas fruncidas para ajustar; sujete con alfileres.
Hilvane entre los puntos grandes.
Cosa en una costura de 3/8" (1cm) entre los puntos pequeños, girando en los puntos grandes.
- Planche los bordes de debajo de la vista de la banda, doblando la totalidad en las esquinas.
En el INTERIOR, sujete con alfileres el REVES de la vista de la banda al REVES del frente, casando los centros y los puntos pequeños y grandes.
Hilvane cerca de todos los bordes de la banda, tal como se muestra.
- En el EXTERIOR, cosa como hilvanado.

ESPALDA, PRESILLA Y VISTA TRASERA

- Aplique **ENTRETELA** de ESPALDA (5) a la extensión de la ESPALDA (4). **TERMINE EL BORDE** de la extensión de la espalda.
- DERECHO CON DERECHO, doble la PRESILLA (6) a la mitad y a lo largo.
Cosa a escasos 1/4" (6mm) del borde doblado, estirando la presilla a medida que la va cosiendo.
Con una aguja, inserte una hebra de hilo grueso fuerte a un extremo de la presilla.
- Saque la aguja, a través del doblez con el ojo hacia adelante, volteando la presilla al lado DERECHO.
- En el EXTERIOR, hilvane la presilla doblada a la espalda IZQUIERDA, centrándolo sobre el punto pequeño, teniendo extendidos los extremos no terminados a 5/8" (1.5cm) más allá de la línea trasera central, como se muestra.
Cosa la presilla en su lugar, a lo largo de la línea trasera central.

- Cosa conjuntamente la costura trasera central de las secciones de la espalda, desde el borde inferior hasta el punto grande.
Retroceda la puntada y cosa en el punto grande para reforzar.

- Voltee las extensiones traseras al EXTERIOR, a lo largo de la línea del doblez y formando las vistas.
Hilvane hasta el borde del escote.

- Aplique **ENTRETELA** a la VISTA DEL ESCOTE TRASERO (7).
TERMINE EL BORDE largo sin muescas.
DERECHO CON DERECHO, sujete con alfileres la vista al borde del escote, emparejando los bordes no terminados y teniendo la vista del escote plana sobre la vista trasera, tal como se muestra.
Cosa el borde del escote.
RECORTE la costura a diferentes niveles.

- Voltee las vistas al INTERIOR; pláncelas.
Haga puntada falsa conjunta a las vistas en los extremos traseros.

COSTURAS DE LOS HOMBROS

- Abra las vistas en los bordes de los hombros.
Cosa el frente a la espalda en la totalidad de las costuras de los hombros.
Cosa las vistas traseras al INTERIOR.
Cosa la vista a las costuras de los hombros.

- TERMINE EL BORDE** exterior de las extensiones lateral y de la sisa. Para formar la abertura y las costuras laterales, DERECHO CON DERECHO, sujete con alfileres el frente a la espalda en las costuras laterales, casando los puntos pequeños y grandes.
Comenzando en el borde inferior, hilvane a máquina a lo largo de la línea continua.
Cosa desde el punto grande hasta el pequeño.
Retroceda la puntada y cosa de nuevo en los puntos para reforzar la costura.
Planche la costura y abra las aberturas, planchando las extensiones de la manga al INTERIOR y a lo largo de las líneas continuas, formando las vistas.
Cosa la vista a las costuras de los hombros.

DOBLADILLO Y ABERTURAS

- Retire los hilvanados laterales.
Abra las extensiones laterales en el borde inferior.
TERMINE EL BORDE no terminado del dobladillo.
Planche hacia arriba el dobladillo, sobre los bordes inferior y abierto.
Abra el dobladillo.
Voltee diagonalmente las esquinas al INTERIOR, donde las líneas del pliegue se cruzan; pláncelas.

- Abra las esquinas.

- Doble diagonalmente la prenda, a través de las esquinas de manera que las líneas del pliegue se unan, tal como se muestra.
Cosa en una línea de pliegue diagonal.
Recorte el margen de la costura de la esquina y pláncela abierta.

- Voltee el dobladillo y las aberturas al INTERIOR; planche.
Haga puntada falsa al dobladillo y a las aberturas en su lugar.
Evite que las puntadas se muestren en el EXTERIOR.

TERMINADO

- Haga conjuntamente los bordes traseros. Cosa el botón debajo de la presilla.