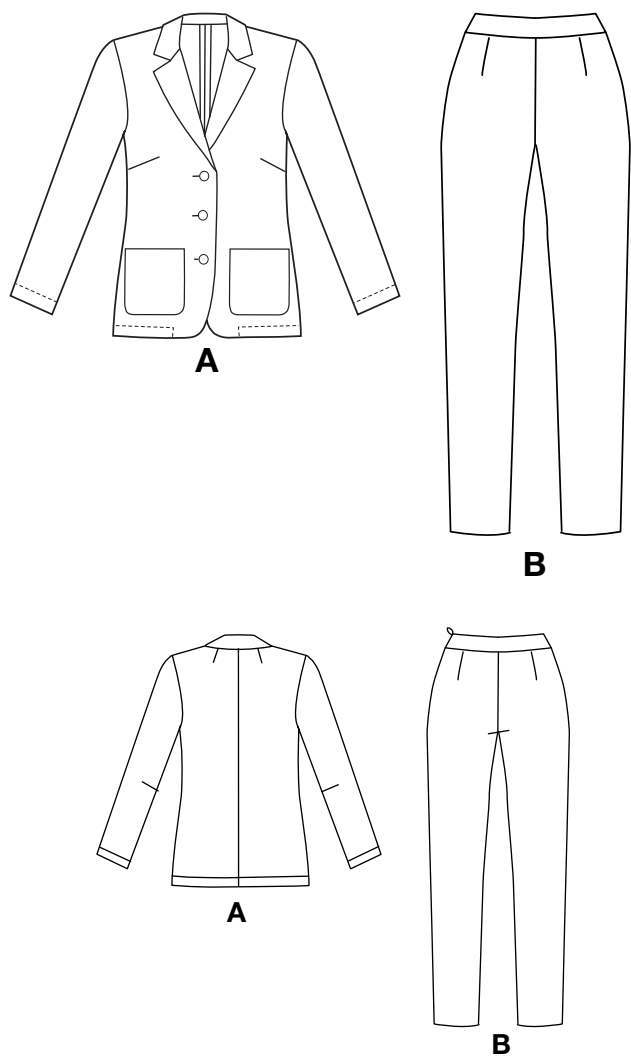


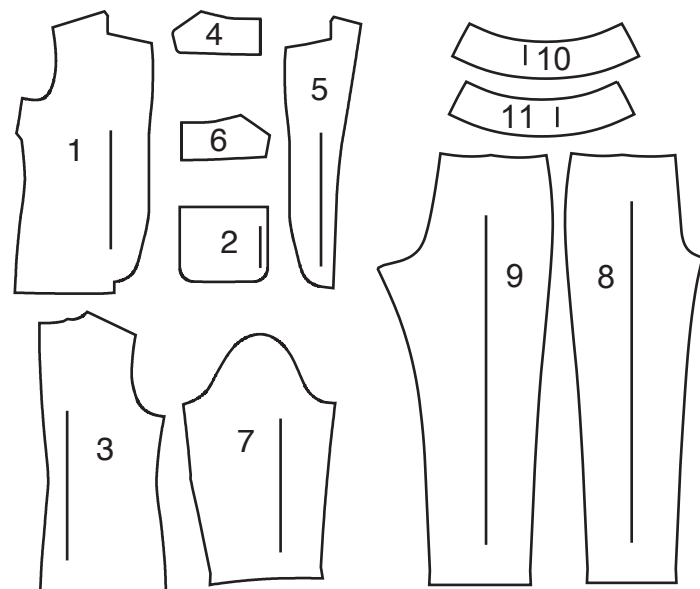
# NEW LOOK® N6794

www.simplicity.com info@simplicity.com 1-888-588-2700

Thank you for purchasing this New Look pattern. We made every effort to provide you with a high quality product. Gracias por haber comprado este patrón de New Look. Hemos hecho todos los esfuerzos para ofrecerle un producto de alta calidad.



11 PIECES

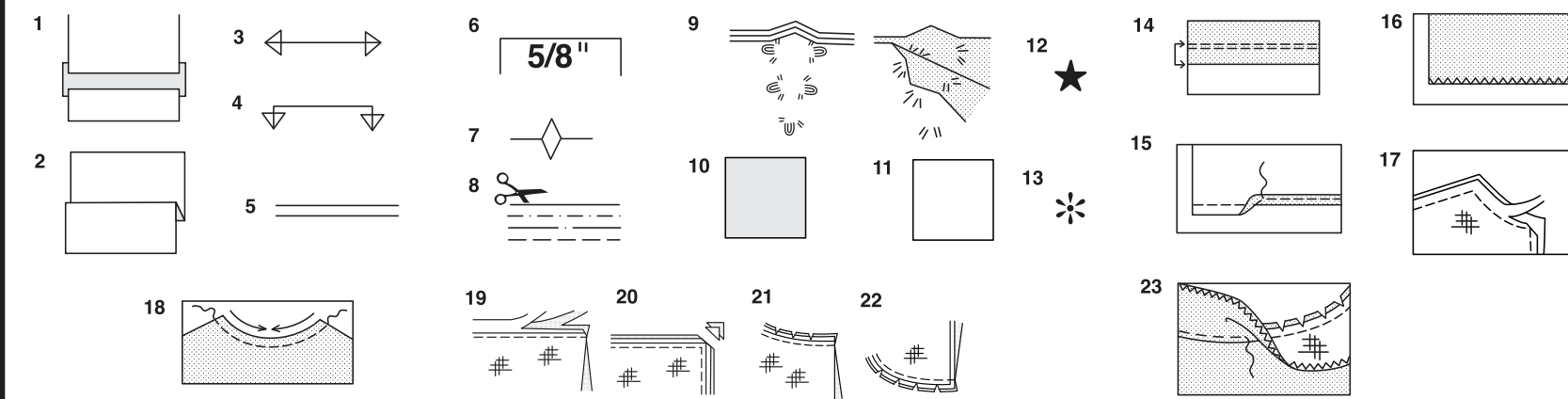


### JACKET A

- 1 FRONT
- 2 POCKET
- 3 BACK
- 4 UNDER COLLAR
- 5 FRONT FACING
- 6 UPPER COLLAR
- 7 SLEEVE

### PANTS B

- 8 FRONT
- 9 BACK
- 10 FRONT WAISTBAND
- 11 BACK WAISTBAND



### How To Use Your Multi Size Pattern

#### First Prepare Your Pattern

Select the pattern pieces according to the view you are making.

This pattern is made to body measurements with ease allowed for comfort and style. If your body measurements differ from those on the pattern envelope adjust the pieces before placing them on the fabric.

Check your back neck to waist and dress length, if necessary, alter the pattern. Lengthening and shortening lines are indicated.

1. **TO LENGTHEN** : Cut pattern between printed lines and place paper underneath. Spread pattern the required amount and pin to paper.
2. **TO SHORTEN** : Fold at the printed lines to form a pleat half the amount to be shortened, ie 1/2" (1.3cm) deep to shorten 1" (2.5cm).

#### Study Your Pattern Markings

3. **STRAIGHT GRAIN** : Place an even distance from selvage or a straight thread.
4. **FOLD** : Place on fold of fabric.
5. **LENGTHENING AND SHORTENING LINES**.
6. **SEAM ALLOWANCE** : 5/8" (1.5cm) unless otherwise stated.
7. **NOTCHES** : Match notches.
8. **CUTTING LINES** : Multi patterns have different cutting lines for different sizes.
9. **TAILOR-TACKS** : With double thread make two loose stitches forming loop through fabric layers and pattern leaving long ends. Cut loop to remove pattern. Snip thread between fabric layers. Leave tufts.

### Cutting Layouts

#### Cutting Directions

FOR FOLDED AND DOUBLE LAYER FABRIC - Place fabric with right side inside and pin pattern on wrong side of fabric.

FOR SINGLE LAYER - Pin pattern on right side of fabric. NOTE: Pattern pieces may interlock more closely for smaller sizes. Cut notches out from cutting line.

BEFORE removing pattern from fabric, transfer all pattern markings using tailor tacks or dressmaking tracing paper.

10. **KEY**: pattern printed side down
11. **KEY**: pattern printed side up
12. **KEY**: Cut out all pieces except pieces that extend beyond folded fabric, then open out fabric and on RIGHT side of fabric, cut in positions as shown.
13. **KEY**: For with and without nap layouts ensure fabric is placed with nap or design running in same direction.

Before pinning to fabric, press tissue pattern with a warm dry iron to remove creases.

#### Sewing Directions

Fabric Key	Right Side	Wrong Side	Interfacing	Lining

Sew garment following **Sewing Directions**.

**PIN** or machine-baste seams matching notches.

**STITCH** 5/8" (1.5cm) seams unless otherwise stated.

**PRESS** seams open unless otherwise indicated, clipping when necessary so seams will lie flat.

14. **EASE-STITCH** or **GATHER** - Loosen needle tension slightly. With RIGHT side up, stitch 5/8" (1.5cm) from cut edge using a long stitch. Stitch again 1/4" (6mm) away in the seam allowance.

**EDGE FINISH** - Neaten raw edges of seams, hems and facings using one of the following methods.

15. Stitch 1/4" (6mm) from edge, turn under along stitching and stitch.

16. Zig-zag or overlock raw edges.

17. **INTERFACING** — Pin interfacing to WRONG side of fabric. Cut across corners that will be enclosed with seams. Machine-baste 1/2" (1.3cm) from cut edge. (Shown only on first illustration). Trim interfacing close to machine-basting. For FUSIBLE interfacing, follow manufacturer's directions.

18. **STAY-STITCH** —Stitch 1/2" (1.3cm) from cut edge, in direction of arrows: (Shown only in the first illustration).

**LAYERING** — Trim seam allowance in layers.

19. Layer enclosed seams

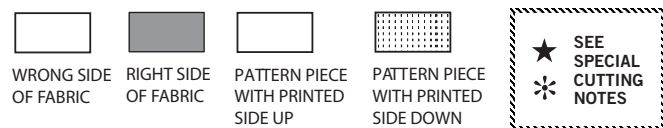
20. Trim corners

21. Clip inner curves

22. Notch outer curves

23. **UNDERSTITCH** —Press facing away from garment; press seam toward facing. Facing side up, understitch close to seam through facing and seam allowances.

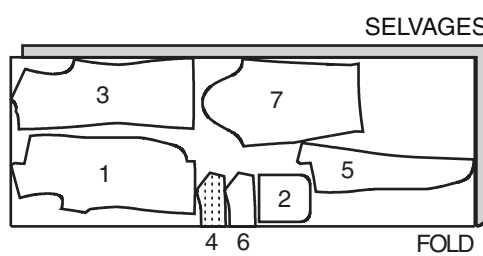
## Cutting Layouts



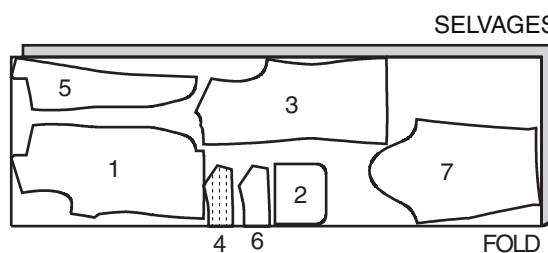
### JACKET A

USE PIECES 1 2 3 4 5 6 7

1A 60" (150CM) WITH NAP SIZES 8 10 12 14



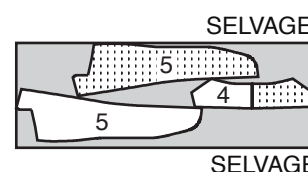
1B 60" (150CM) WITH NAP SIZES 16 18 20



### FUSIBLE INTERFACING A

USE PIECES 4 5

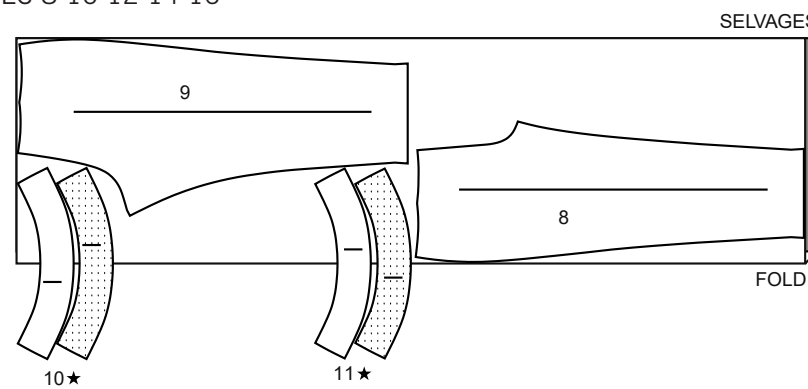
2 20" (51CM) ALL SIZES



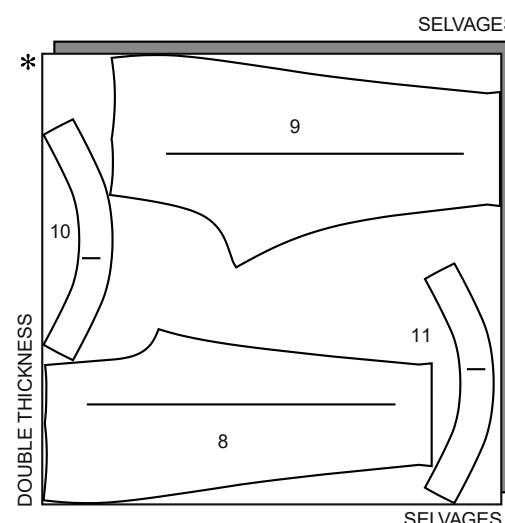
### PANTS B

USE PIECES 8 9 10 11

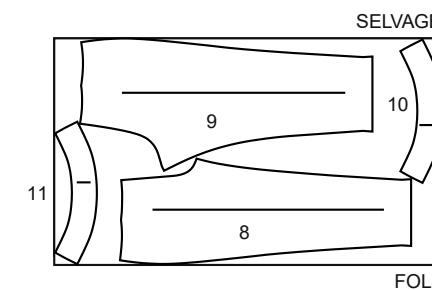
3A 45" (115CM) WITH NAP SIZES 8 10 12 14 16



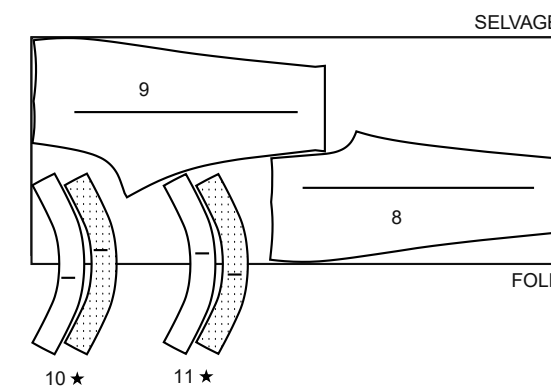
3B 45" (115CM) WITH NAP SIZES 18 20



3C 60" (150CM) WITH NAP SIZES 8 10 12 14 16



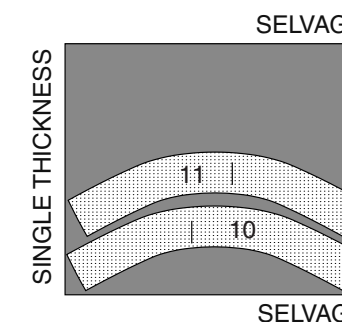
3D 60" (150CM) WITH NAP SIZES 18 20



### FUSIBLE INTERFACING B, C

USE PIECES 10 11

4 20" (51CM) ALL SIZES



## Español

### CHAQUETA A

USE LAS PIEZAS 1 2 3 4 5 6 7

1A 60" (150CM) CON PELUSA TALLAS 8 10 12 14

1B 60" (150CM) CON PELUSA TALLAS 16 18 20

### ENTRETELA A

USE LAS PIEZAS 4 5

2 20" (51CM) TODAS LAS TALLAS

### PANTALONES B

USE LA PIEZAS 8 9 10 11

3A 45" (115CM) TALLAS 8 10 12 14 16

3B 45" (115CM) CON PELUSA TALLAS 18 20

3C 60" (150CM) CON PELUSA TALLAS 8 10 12 14 16

3D 60" (150CM) CON PELUSA TALLAS 18 20

### ENTRETELA ADHESIVA B, C

USE LAS PIEZAS 10 11

4 20" (51CM) TODAS LAS TALLAS

SELVAGES= ORILLAS  
FOLD= DOBLEZ  
DOUBLE THICKNESS= ESPESOR DOBLE  
SINGLE THICKNESS= ESPESOR SIMPLE

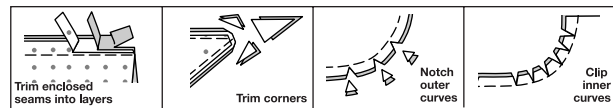
## SEWING INFORMATION

**5/8" (1.5cm) SEAM ALLOWANCES ARE INCLUDED,**  
(unless otherwise indicated)

### ILLUSTRATION SHADING KEY

Right Side	Wrong Side	Interfacing	Lining	Underlining

Press as you sew. Press seams flat, then press open, unless otherwise instructed. Clip seam allowances, where necessary, so they lay flat.



## GLOSSARY

Sewing terms appearing in **BOLD TYPE** in Sewing Instructions are explained below.

**DOUBLE-STITCH** - Stitch seam along seamline; stitch again 1/4"(6mm) away in seam allowance using a straight stitch OR zigzag stitch; trim close to second stitching OR overlock seam.

**EASESTITCH** - Stitch along seamline, using long machine stitches. Pull thread ends when adjusting to fit.

NOTE: For sleeve caps, make a second row of long machine stitches 1/4"(6mm) away in seam allowance. for more control.

**EDGESTITCH** - Stitch close to finished edge or seam.

**FINISH** - Stitch 1/4"(6mm) from raw edge and finish with one of the following: (1) Pink OR (2) Overcast OR (3) Turn in along stitching and stitch close to fold OR (4) Overlock.

OPTIONAL FOR HEMS: Apply Seam Binding.

**REINFORCE** - Stitch along seamline where indicated in sewing instructions, using small machine stitches.

**SLIPSTITCH** - Slide needle through a folded edge, then pick up a thread of underneath fabric.

**STAYSTITCH** - Stitch 1/8"(3mm) from seamline in seam allowance (usually 1/2"(1.3cm) from raw edge).

**TOPSTITCH** - On outside, stitch 1/4"(6mm) from edge, seam or previous stitching, using presser foot as guide, or stitch where indicated in instructions.

**UNDERSTITCH** - Open out facing or underside of garment; stitch to seam allowance close to seam.

## JACKET A

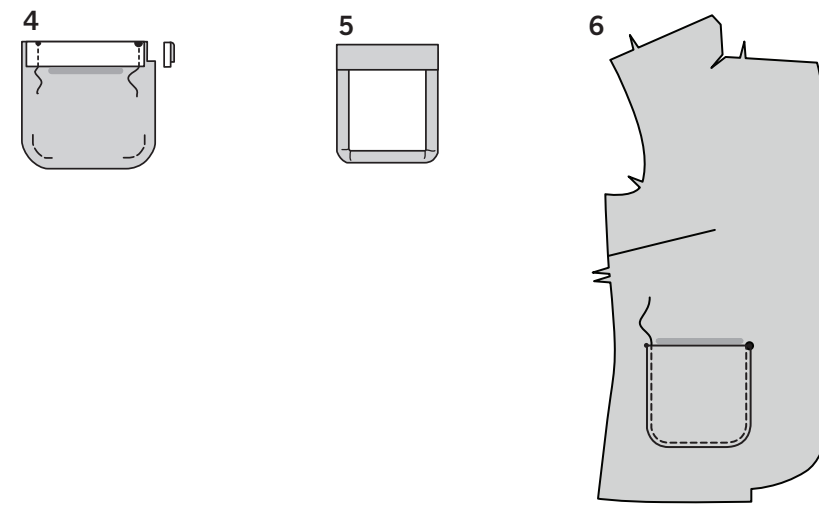
*NOTE: Stretch fabric slightly while stitching.*

### INTERFACING

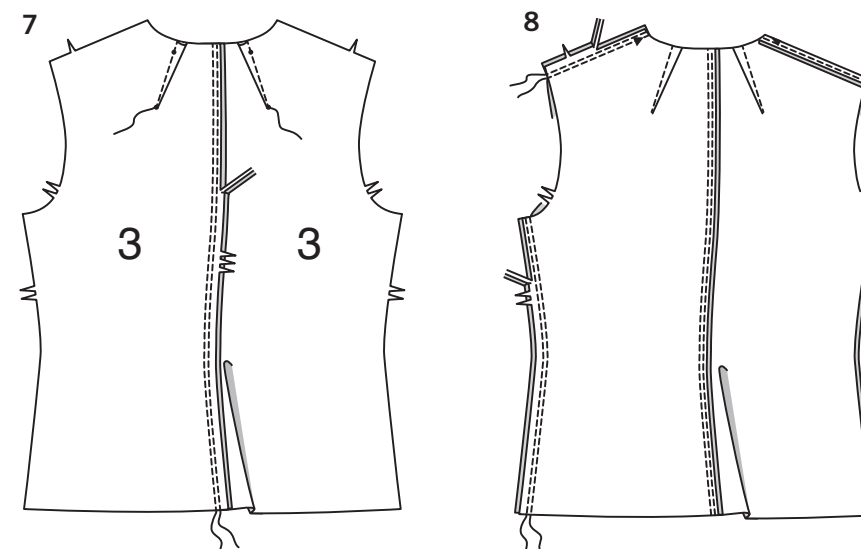
- Trim corners of INTERFACING, as shown. Fuse INTERFACING to wrong side of each matching FABRIC section, following manufacturer's instructions.

### FRONT AND POCKET

- REINFORCE** inner corner of FRONT (1) neck edge, pivoting at small dot. Clip to small dot. Stitch dart in front. Press down.
- Stitch curved edges of POCKET (2) 3/8"(1cm) from raw edge, using long machine stitches, as shown. **FINISH** upper edge of pocket.

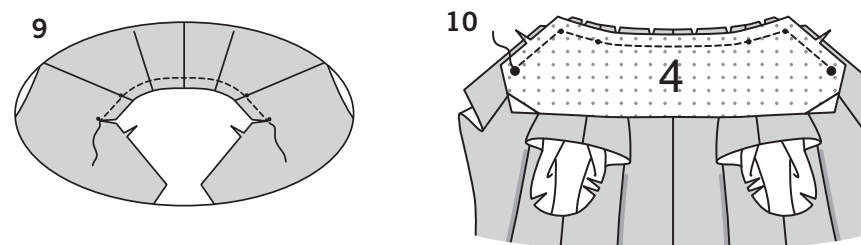


- Turn upper edge to outside along foldline; stitch ends. Trim.
- Turn upper edge of pocket to inside, turning in seam allowances on remaining edges; pull threads to ease in fullness on curves. Press.
- Pin pocket to front, matching symbols. **EDGESTITCH** side and lower edges.

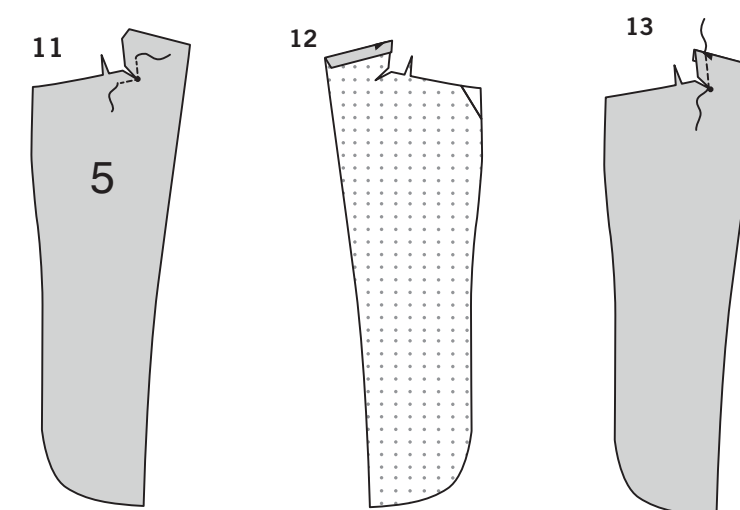


- Stitch darts in BACK (3). Press toward center. Stitch back sections together in **DOUBLE-STITCHED** seams. Press seam toward left back.
- Stitch front and back together at shoulders and sides in **DOUBLE-STITCHED** seams. Press seams toward back.

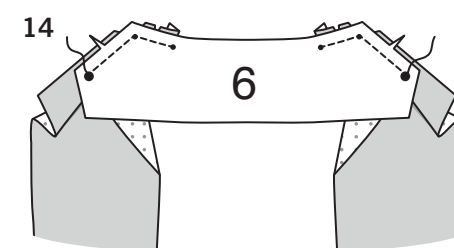
### COLLAR



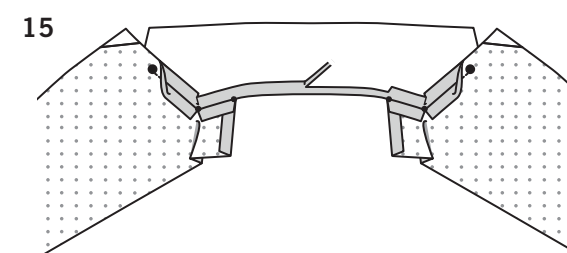
- STAYSTITCH** neck edge of jacket between small dots.
- Pin UNDER COLLAR (4) to neck edge, matching symbols and clipping jacket where necessary. Stitch between large dots. Trim.



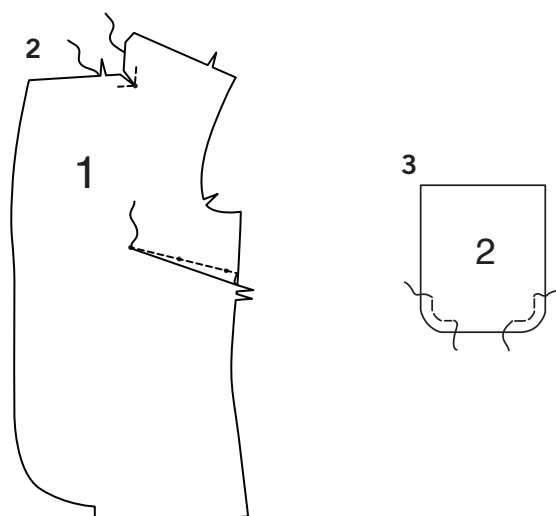
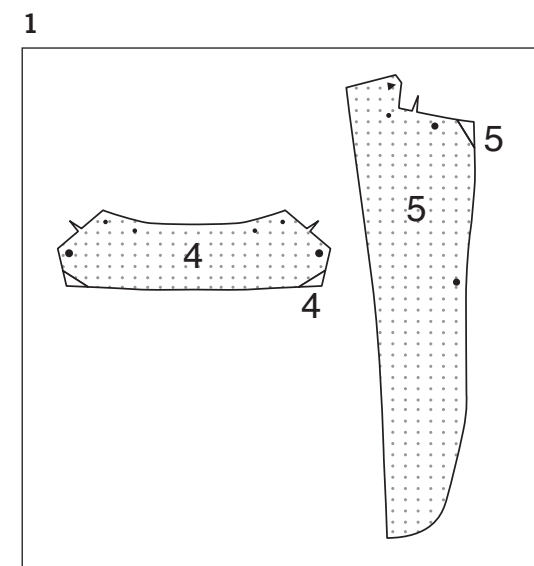
- FINISH** outer edge of FRONT FACING (5). **REINFORCE** inner corner of front facing neck edge, pivoting at small dot. Clip to small dot.
- Turn in shoulder seam allowance on front facing; press.
- STAYSTITCH** neck edge of front facing above clip.

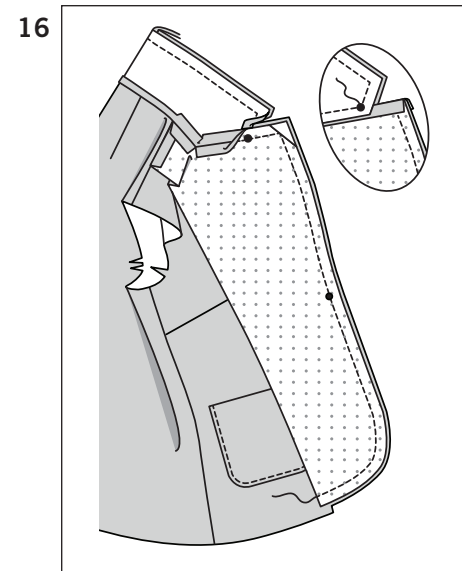


- Pin UPPER COLLAR (6) to front facing neck edge, matching symbols and clipping facing where necessary. Stitch between large and small dots. Trim.

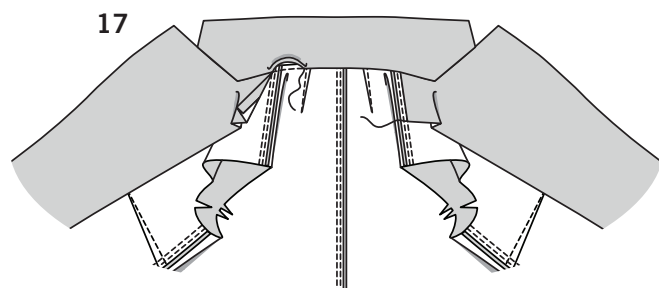


- Press neck seams open, turning in remaining seam allowance on collar; press. Trim pressed seam allowance to 3/8"(1cm).

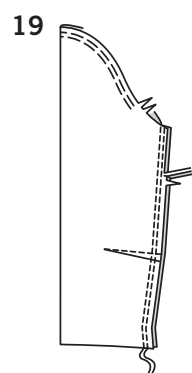
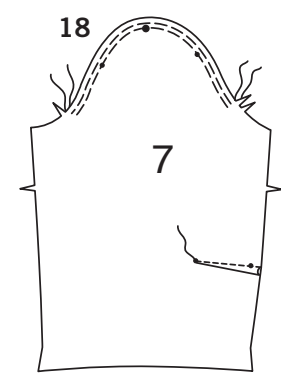




16. Pin front facing and upper collar to jacket and under collar, matching symbols and stretching jacket to fit between large dots. Stitch, breaking stitching at large dots, as shown. Trim.

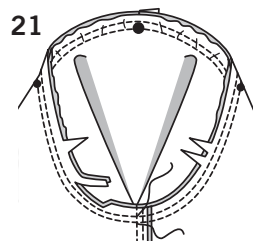
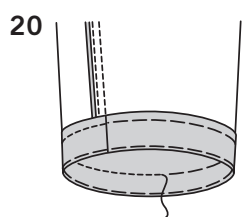


17. **SLIPSTITCH** pressed edges of front facing to shoulder seams. **SLIPSTITCH** pressed edge of collar over seam.



18. Stitch dart in SLEEVE (7); press down. **EASESTITCH** upper edge of sleeve between notches.

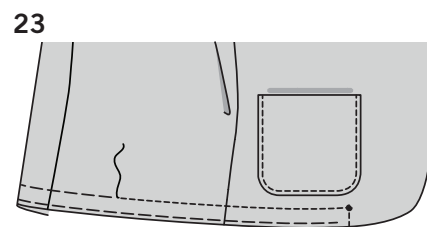
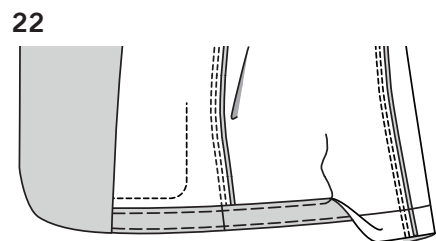
19. Stitch sleeve seam, using a **DOUBLE-STITCHED** seam. Press seam toward back.



20. Turn up sleeve hem. Baste close to fold. Baste hem in place 1/4"(6mm) from upper raw edge. Press. **TOPSTITCH** hem along upper basting. Trim close to stitching, if desired.

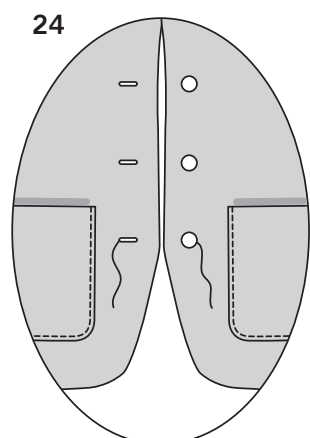
21. With right sides together, pin sleeve into armhole, placing large dot at shoulder seam. Adjust ease; baste. Stitch. Stitch again 1/4"(6mm) away in seam allowance. Trim close to stitching. Press seam allowances flat. Turn seam toward sleeve.

**FINISHING**



22. Turn up hem. Baste close to fold. Trim hem to an even width. Baste hem in place 1/4"(6mm) from to upper edge, as shown. Press.

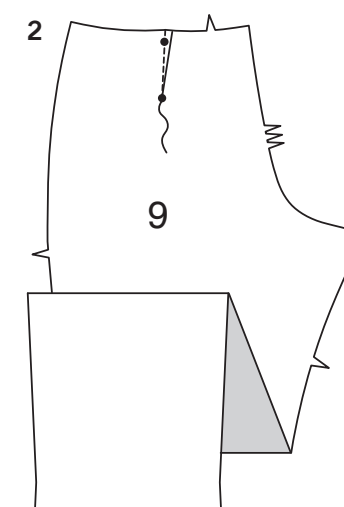
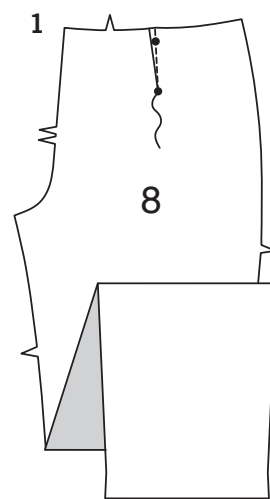
23. **TOPSTITCH** hem along upper basting, pivoting to lower edge at small dot.



24. Make buttonholes in right front at markings. Sew buttons to left front at markings.

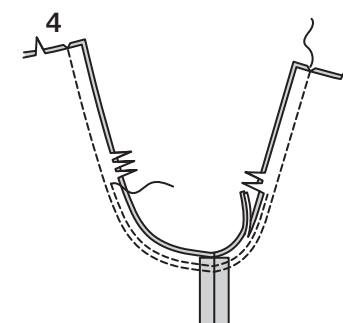
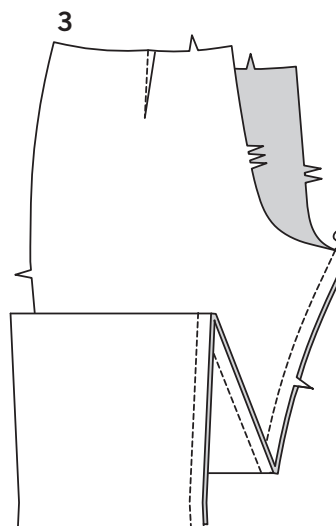
**PANTS B**

**FRONT AND BACK**



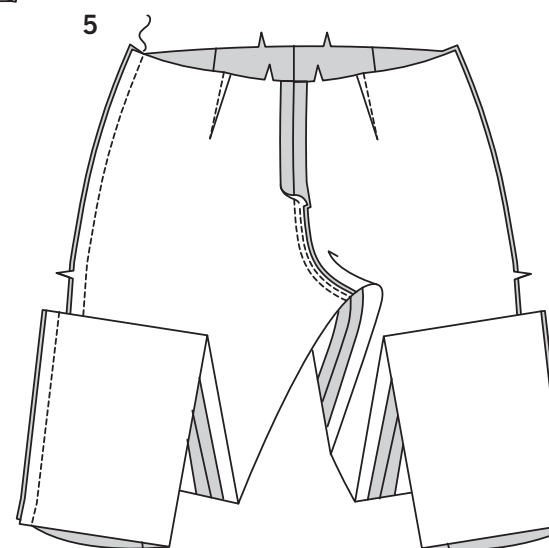
1. Stitch dart in FRONT (8). Press toward center.

2. Stitch dart in BACK (9). Press toward center.

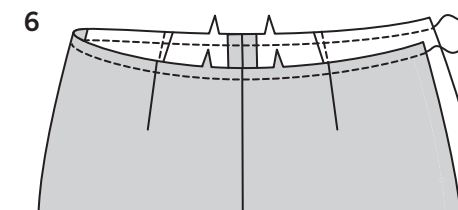


3. Stitch front to back at inner leg, stretching back to fit.

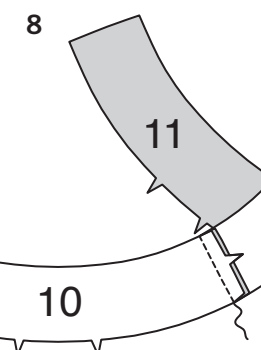
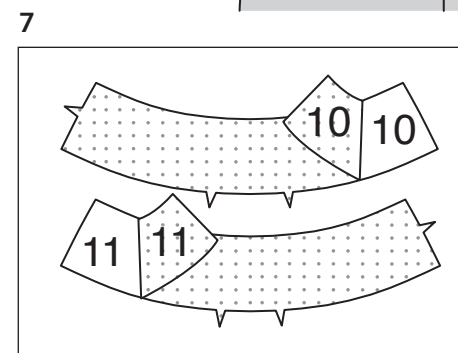
4. Stitch crotch seam; stitch again 1/4"(6mm) away in seam allowance along curve, as shown. Trim close to second stitching.



5. Stitch front and back together at right side.

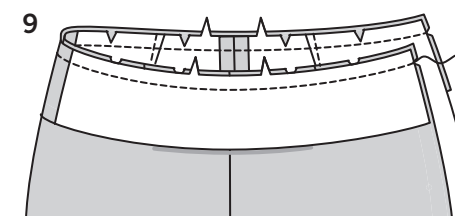


6. **STAYSTITCH** upper edge of pants.



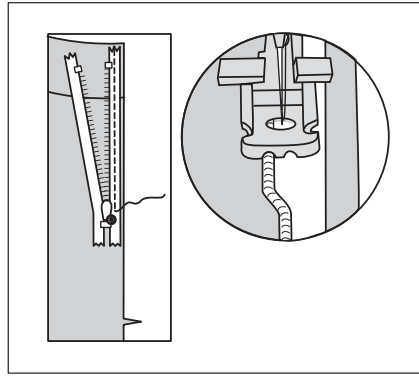
7. Pin **INTERFACING** to wrong sides of **FRONT WAISTBAND** (10) and **BACK WAISTBAND** (11). Fuse, following manufacturer's instructions.

8. Stitch uninterfaced front waistband and back waistband sections together at right side. **NOTE:** Interfaced waistband sections will be used for facing.

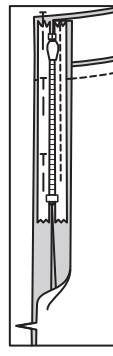


9. Pin waistband to pants, matching centers, seams and notches, clipping pants where necessary. Stitch. Press seam toward waistband.

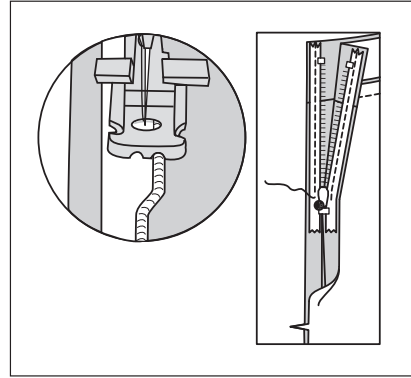
10



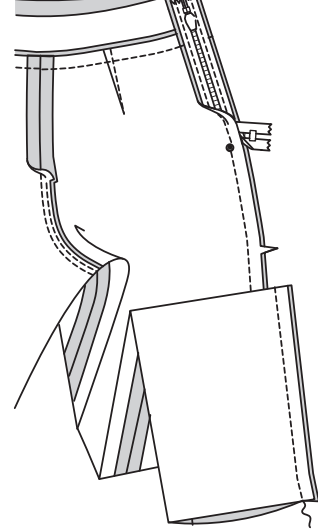
11



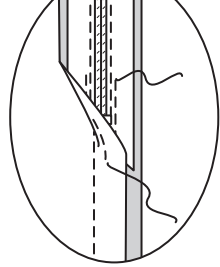
12



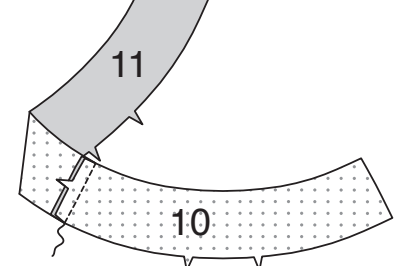
13



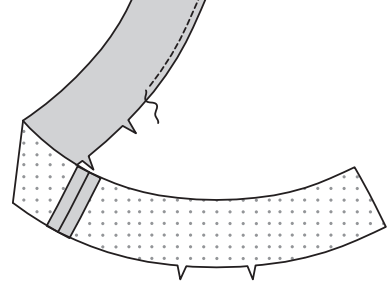
14



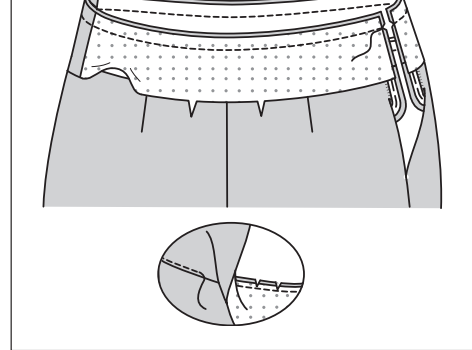
15



16



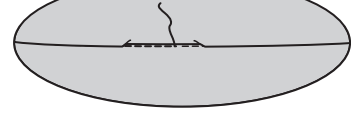
17



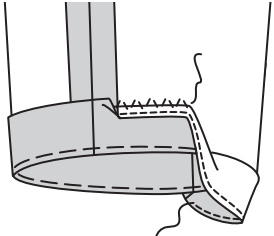
18



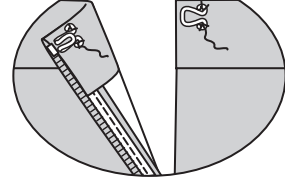
19



20



21



## ZIPPER AND FINISHING

**NOTE:** Use special invisible zipper foot when stitching invisible zipper.

10. Open zipper. On outside, pin zipper to front opening edge, face down in seam allowance, placing zipper tape 1/4" (6mm) down from upper edge of fabric and zipper teeth on seamline. Position left-hand groove of zipper foot over teeth; stitch close to teeth, ending at large dot.

11. Close zipper. Pin remaining zipper tape to back opening edge, placing zipper teeth on seamline.

12. Open zipper. Position right-hand groove of zipper foot over teeth; stitch to large dot.

13. Close zipper. Slide zipper foot to the left. Pin front and back sections together below zipper. Position and lower needle slightly above and to the left of zipper stitching at large dot. Stitch left side seam below large dot.

14. Stitch or hand sew each end of zipper tape to seam allowances, keeping pants free when stitching.

15. Stitch front waistband FACING (10) to back waistband FACING (11) at notched edge.

16. FINISH lower edge of waistband facing.

17. With right sides together, pin facing to waistband at upper edge. Stitch. Trim. UNDERSTITCH facing.

18. Turn facing to inside, turning in opening edges to clear zipper teeth. Press. SLIPSTITCH to zipper tape.

19. On outside, spread waistband seam with finger until previous stitching is visible. Stitch on top of previous stitching.

20. Turn up 1 1/4" (3.2cm) hem on lower edge of pants. Baste close to fold. FINISH raw edge. Sew in place. Press.

21. Sew hook and eyes to left side opening edges above zipper, as shown.

Español

## CHAQUETA A

**NOTA:** Estire ligeramente la tela mientras la está cosiendo.

## ENTRETELA

1. Recorte las esquinas de la ENTRETELA, tal como se muestra. Adhiera la ENTRETELA por el revés casando las secciones de la TELA, siguiendo las instrucciones del fabricante.

## FRENTE Y BOLSILLO

2. REFUERCE la esquina interior del borde del escote FRONTAL (1), girando en el punto pequeño. Haga cortes hasta el punto pequeño. Cosa la pinza en el frente. Planche hacia abajo.

3. Cosa los bordes curvos del BOLSILLO (2), a 3/8" (1cm) del borde no terminado, usando una puntada larga de la máquina, como se muestra. TERMINE el borde superior del bolsillo.

4. Voltee el borde superior al exterior y a lo largo de la línea del dobléz; cosa los extremos. Recorte.

5. Voltee el borde superior del bolsillo al interior, volteando los márgenes de la costura sobre los bordes restantes; hale de los hilos fruncidos para ajustar en las curvas. Planche.

6. Sujete con alfileres el bolsillo al frente, casando los símbolos. HAGA PUNTADA DE BORDE a los bordes lateral e inferior.

7. Cosa las pinzas en la ESPALDA (3). Planche hacia el centro.

Cosa conjuntamente las secciones de la espalda, en costuras de DOBLE PUNTADA. Planche la costura hacia la espalda izquierda.

8. Cosa conjuntamente el frente y la espalda, en las costuras de los hombros y las laterales, usando costuras de DOBLE PUNTADA. Planche las costuras hacia atrás.

## CUELLO

9. HAGA PUNTADA DE SOSTEN al borde del escote de la chaqueta entre los puntos pequeños.

10. Sujete con alfileres DEBAJO DEL CUELLO (4) al borde del escote, casando los símbolos y haciendo cortes a la chaqueta donde se considere necesario. Cosa entre los puntos grandes. Recorte.

11. TERMINE el borde exterior de la VISTA FRONTAL (5). REFUERCE la esquina interior del borde del escote de la vista frontal, girando en el punto pequeño. Haga cortes hasta el punto pequeño.

12. Voltee el margen de la costura de los hombros sobre la vista frontal; planche.

13. HAGA PUNTADA DE SOSTEN al borde del escote de la vista frontal por encima del corte.

14. Sujete con alfileres la PARTE SUPERIOR DEL CUELLO (6) a la vista frontal del borde del escote, casando los símbolos y haciendo cortes a la vista, donde se considere necesario. Cosa entre los puntos grandes y pequeños. Recorte.

15. Planche abiertas las costuras del escote, volteando el margen de la costura sobre el cuello; planche. Recorte el margen de la costura doblado a 3/8" (1cm).

16. Sujete con alfileres la vista frontal y el cuello superior a la chaqueta y a la parte de debajo del cuello, casando los símbolos y estirando la chaqueta, para ajustarla entre los puntos grandes. Cosa, deteniendo la puntada en los puntos grandes, tal como se muestra. Recorte.

17. HAGA PUNTADA DE SOSTEN a los bordes doblados de la vista frontal y hasta las costuras de los hombros. HAGA PUNTADA DE SOSTEN al borde doblado del cuello sobre la costura.

## MANGA

18. Cosa la pinza en la MANGA (7); planche hacia abajo. HAGA PUNTADA FRUNCIDA al borde superior de la manga entre las muescas.

19. Cosa la costura de la manga, usando una costura de PUNTADA DOBLE. Planche la costura hacia la espalda.

20. Voltee hacia arriba el dobladillo de la manga. Hilvane cerca del dobléz. Hilvane el dobladillo en su lugar a 1/4" (6mm) del borde no terminado superior. Planche. HAGA PUNTADA DE ADORNO al dobladillo, a lo largo del hilvanado superior. Recorte cerca de la puntada, si así lo decide.

21. DERECHO CON DERECHO, sujete con alfileres la manga dentro de la sisa, colocando el punto grande en la costura de los hombros. Ajuste el fruncido; hilvane. Cosa. Cosa de nuevo a 1/4" (6mm) a distancia del margen de la costura. Recorte cerca de la puntada. Planche planos los márgenes de la costura. Voltee la costura hacia la manga.

## TERMINADO

22. Voltee el dobladillo hacia arriba. Hilvane cerca del dobléz. Recorte el dobladillo a un ancho uniforme. Hilvane el dobladillo en su lugar a 1/4" (6mm) desde el borde superior, como se muestra. Planche.

23. HAGA PUNTADA DE ADORNO al dobladillo, a lo largo del hilvanado superior, girando hasta el borde inferior en el punto pequeño.

24. Haga los ojales al frente derecho sobre las marcas. Cosa los botones al frente izquierdo en las marcas.

## PANTALONES B

## FRENTE Y PARTE TRASERA

1. Cosa la pinza en el FRENTE (8). Planche hacia el centro.

2. Cosa la pinza en la parte trasera (9). Planche hacia el centro.

3. Cosa el frente a la parte trasera por las partes interiores de la pierna, estirando hacia atrás para ajustar.

4. Cosa la costura de la entrepierna; cosa de nuevo a 1/4" (6mm) a distancia en el margen de la costura y a lo largo de la curva, como se muestra. Recorte cerca de la puntada siguiente.

5. Cosa conjuntamente el frente y la parte trasera en el lado derecho.

6. HAGA PUNTADA DE SOSTEN al borde superior de los pantalones.

7. Sujete con alfileres la ENTRETELA al revés de la PRETINA FRONTAL (10) y de la PRETINA TRASERA (11). Adhiera, siguiendo las instrucciones del fabricante.

8. Cosa conjuntamente las secciones de la pretina frontal sin entreteila y la pretina trasera en el lado derecho.

**NOTA:** Entretele las secciones de la pretina, que será usada para la vista.

9. Sujete con alfileres la pretina a los pantalones, casando los centros, las costuras y las muescas, haciendo cortes a los pantalones, donde lo considere necesario. Cosa. Planche la costura hacia la pretina.

## CREMALLERA Y TERMINADO

**NOTA:** Use un pie especial para cremallera invisible, cuando cosa la cremallera invisible.

10. Abra la cremallera. En el exterior, sujete con alfileres la cremallera al borde de la abertura frontal, cara abajo en el margen de la costura, colocando la cinta de la cremallera a 1/4" (6mm), abajo del borde superior de la tela y los dientes de la cremallera sobre la línea de la costura. Coloque la ranura izquierda del pie para cremallera sobre los dientes; cosa cerca de los dientes, terminando en el punto grande.

11. Cierre la cremallera. Sujete con alfileres la cinta de la cremallera restante al borde abierto trasero, colocando los dientes de la cremallera sobre la línea de la costura.

12. Abra la cremallera. Coloque la ranura derecha del pie para cremallera sobre los dientes; cosa hasta el punto grande.

13. Cierre la cremallera. Deslice el pie para cremallera hasta la izquierda. Sujete con alfileres conjuntamente las secciones frontal y trasera, por debajo de la cremallera. Cosa la costura lateral izquierda por debajo del punto grande.

14. Cosa a máquina o a mano cada extremo de la cinta de la cremallera a los márgenes de la costura, manteniendo los pantalones libres cuando este cosiendo.

15. Cosa la VISTA de la pretina frontal (10) a la VISTA de la pretina trasera (11) en el borde con muescas.

16. TERMINE el borde inferior de la vista de la pretina.

17. DERECHO CON DERECHO, sujete con alfileres la vista a la pretina en el borde superior. Cosa. Recorte. HAGA PUNTADA INFERIOR a la cinta de la cremallera.

18. Voltee la vista al interior, volteando los bordes abiertos para despejar los dientes de la cremallera. Planche. HAGA PUNTADA FALSA a la cinta de la cremallera.

19. En el exterior, distribuya con los dedos la costura de la pretina, hasta que la puntada previa sea visible.

20. Voltee el dobladillo a 1-1/4" (3.2cm), sobre el borde inferior de los pantalones. Hilvane cerca del dobléz. TERMINE el borde no terminado. Cosa en su lugar. Planche.

21. Cosa los broches de presión a los bordes abiertos laterales izquierdos, por encima de la cremallera tal como se muestra.