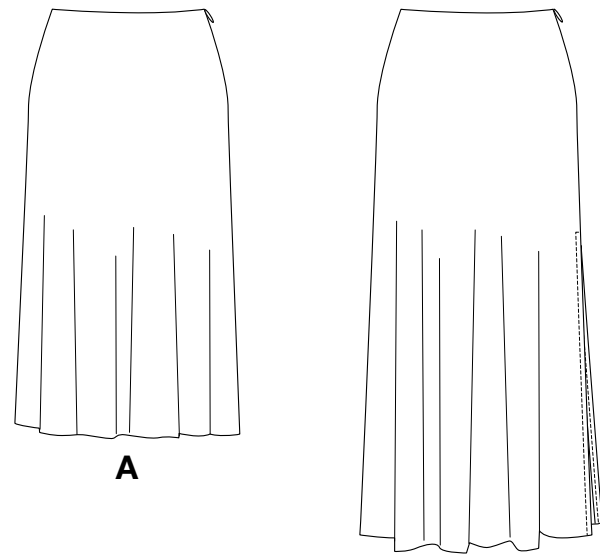


NEW LOOK® N6793

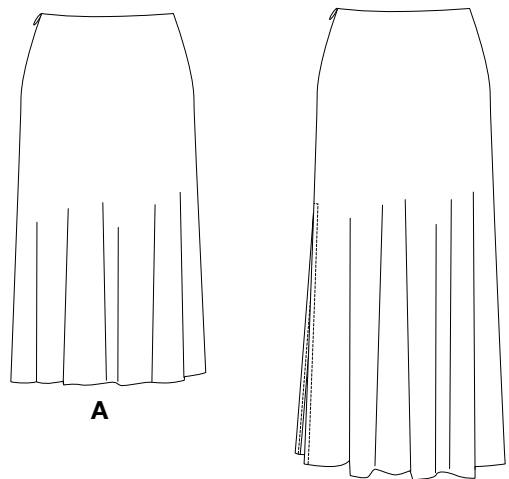
www.simplicity.com info@simplicity.com 1-888-588-2700

Thank you for purchasing this New Look pattern. We made every effort to provide you with a high quality product. Gracias por haber comprado este patrón de New Look. Hemos hecho todos los esfuerzos para ofrecerle un producto de alta calidad.



A

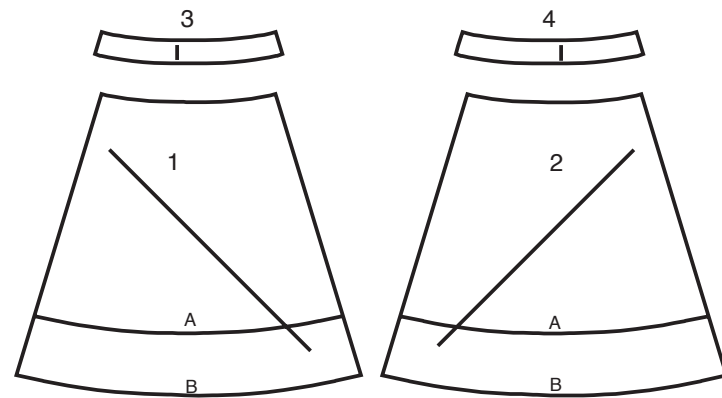
B



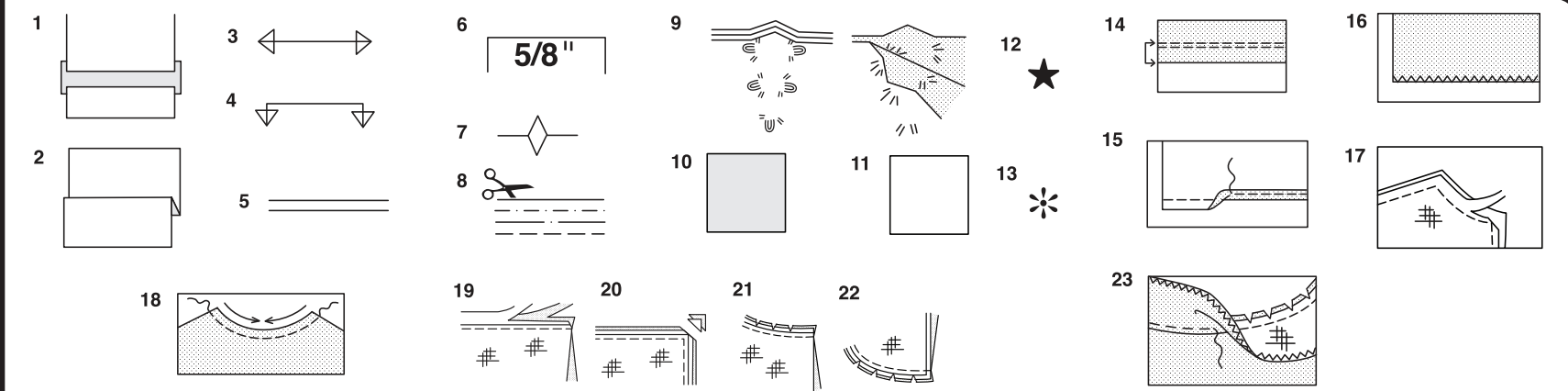
A

B

4 PIECES



- 1 FRONT
- 2 BACK
- 3 FRONT FACING
- 4 BACK FACING



How To Use Your Multi Size Pattern

First Prepare Your Pattern

Select the pattern pieces according to the view you are making.

This pattern is made to body measurements with ease allowed for comfort and style. If your body measurements differ from those on the pattern envelope adjust the pieces before placing them on the fabric.

Check your back neck to waist and dress length, if necessary, alter the pattern. Lengthening and shortening lines are indicated.

1. **TO LENGTHEN** : Cut pattern between printed lines and place paper underneath. Spread pattern the required amount and pin to paper.
2. **TO SHORTEN** : Fold at the printed lines to form a pleat half the amount to be shortened, ie 1/2" (1.3cm) deep to shorten 1" (2.5cm).

Study Your Pattern Markings

3. **STRAIGHT GRAIN** : Place an even distance from selvage or a straight thread.
4. **FOLD** : Place on fold of fabric.
5. **LENGTHENING AND SHORTENING LINES**.
6. **SEAM ALLOWANCE** : 5/8" (1.5cm) unless otherwise stated.
7. **NOTCHES** : Match notches.
8. **CUTTING LINES** : Multi patterns have different cutting lines for different sizes.
9. **TAILOR-TACKS** : With double thread make two loose stitches forming loop through fabric layers and pattern leaving long ends. Cut loop to remove pattern. Snip thread between fabric layers. Leave tufts.

Cutting Layouts

Cutting Directions

FOR FOLDED AND DOUBLE LAYER FABRIC - Place fabric with right side inside and pin pattern on wrong side of fabric.

FOR SINGLE LAYER - Pin pattern on right side of fabric. NOTE: Pattern pieces may interlock more closely for smaller sizes. Cut notches out from cutting line.

BEFORE removing pattern from fabric, transfer all pattern markings using tailor tacks or dressmaking tracing paper.

10. **KEY**: pattern printed side down
11. **KEY**: pattern printed side up
12. **KEY**: Cut out all pieces except pieces that extend beyond folded fabric, then open out fabric and on RIGHT side of fabric, cut in positions as shown.
13. **KEY**: For with and without nap layouts ensure fabric is placed with nap or design running in same direction.

Before pinning to fabric, press tissue pattern with a warm dry iron to remove creases.

Sewing Directions

Fabric Key	Right Side	Wrong Side	Interfacing	Lining
------------	------------	------------	-------------	--------

Sew garment following Sewing Directions.

PIN or machine-baste seams matching notches.

STITCH 5/8" (1.5cm) seams unless otherwise stated.

PRESS seams open unless otherwise indicated, clipping when necessary so seams will lie flat.

14. **EASE-STITCH** or **GATHER** - Loosen needle tension slightly. With RIGHT side up, stitch 5/8" (1.5cm) from cut edge using a long stitch. Stitch again 1/4" (6mm) away in the seam allowance.

EDGE FINISH - Neaten raw edges of seams, hems and facings using one of the following methods.

15. Stitch 1/4" (6mm) from edge, turn under along stitching and stitch.
16. Zig-zag or overlock raw edges.

17. **INTERFACING** — Pin interfacing to WRONG side of fabric. Cut across corners that will be enclosed with seams. Machine-baste 1/2" (1.3cm) from cut edge. (Shown only on first illustration). Trim interfacing close to machine-basting. For FUSIBLE interfacing, follow manufacturer's directions.

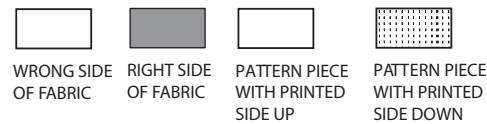
18. **STAY-STITCH** —Stitch 1/2" (1.3cm) from cut edge, in direction of arrows: (Shown only in the first illustration).

LAYERING — Trim seam allowance in layers.

19. Layer enclosed seams
20. Trim corners
21. Clip inner curves
22. Notch outer curves

23. **UNDERSTITCH** —Press facing away from garment; press seam toward facing. Facing side up, understitch close to seam through facing and seam allowances.

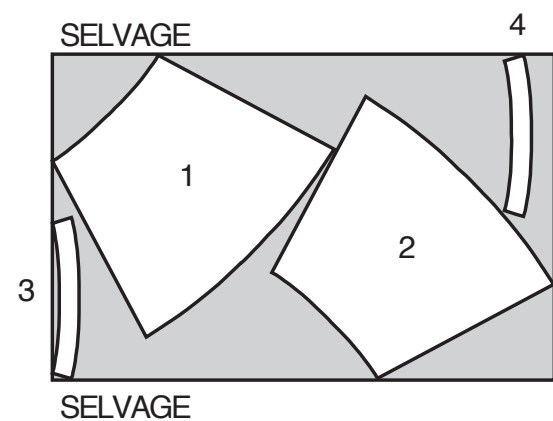
Cutting Layouts



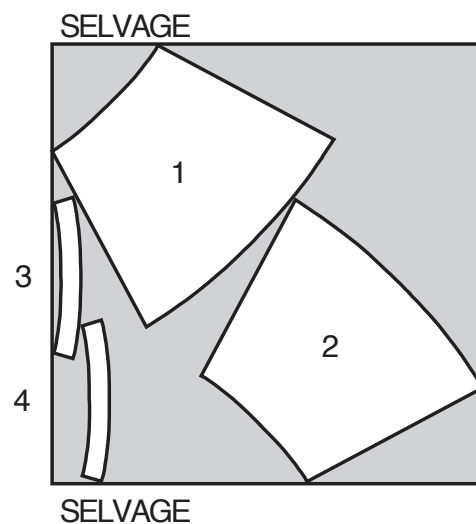
SKIRT A

USE PIECES 1 2 3 4

1A 45" (115 CM)
WITH OR WITHOUT NAP
ALL SIZES



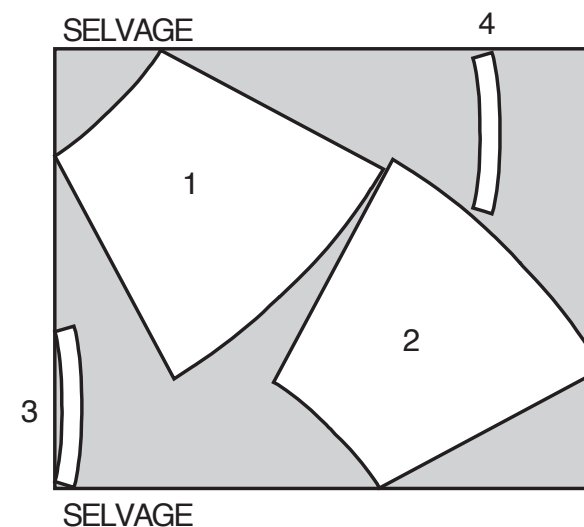
1B 60" (150 CM)
WITH OR WITHOUT NAP
ALL SIZES



SKIRT B

USE PIECES 1 2 3 4

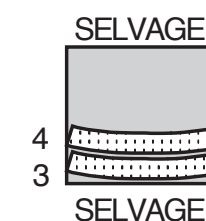
2 60" (150 CM)
WITH OR WITHOUT NAP
ALL SIZES



FUSIBLE INTERFACING A, B

USE PIECES 3 4

3 18"- 20" (46-51 CM)
ALL SIZES



Español

FALDA A

USE LAS PIEZAS 1 2 3 4

1A 45" (115 CM)
CON O SIN PELUSA
TODAS LAS TALLAS

1B 60" (150 CM)
CON O SIN PELUSA
TODAS LAS TALLAS

FALDA B

USE LAS PIEZAS 1 2 3 4

2 60" (150 CM)
CON O SIN PELUSA
TODAS LAS TALLAS

ENTRETELA ADHESIVA A, B

USE LAS PIEZAS 3 4

3 18"- 20" (46-51 CM)
TODAS LAS TALLAS

SELVAGE= ORILLA

SEWING DIRECTIONS

Sewing terms appearing in **BOLD TYPE** in Sewing Instructions are explained below.

FINISH - Stitch 1/4" (6mm) from raw edge and finish with one of the following: (1) Pink OR (2) Overcast OR (3) Turn in along stitching and stitch close to fold OR (4) Overlock.

OPTIONAL FOR HEMS: Apply Seam Binding.

NARROW HEM - Turn in hem; press, easing in fullness if necessary. Open out hem. Turn in again so raw edge is along crease; press. Turn in along crease; stitch.

SLIPSTITCH - Slide needle through a folded edge, then pick up a thread of underneath fabric.

UNDERSTITCH - Open out facing or underside of garment; stitch to seam allowance close to seam.

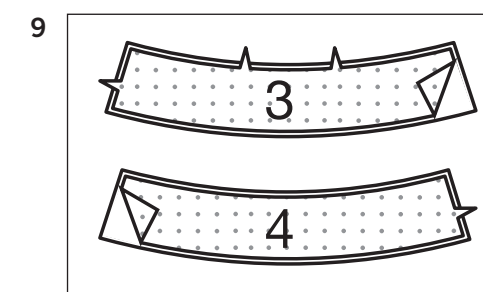
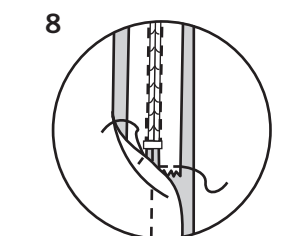
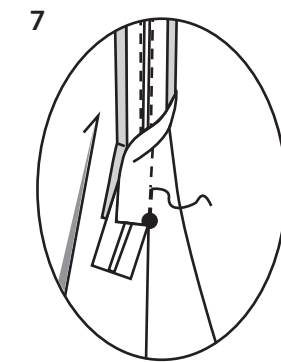
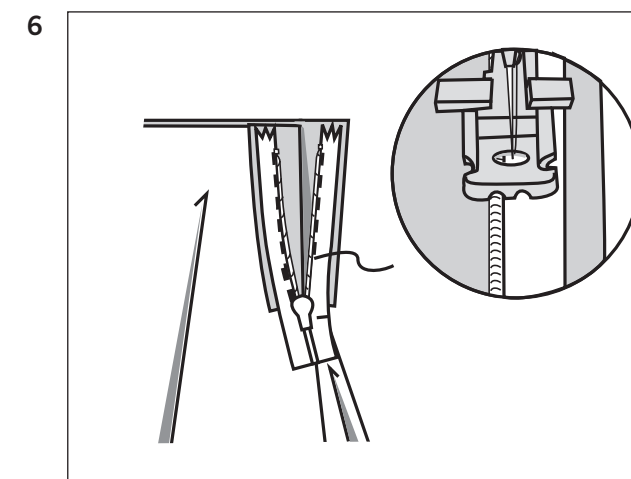
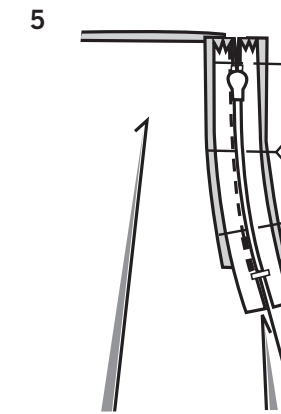
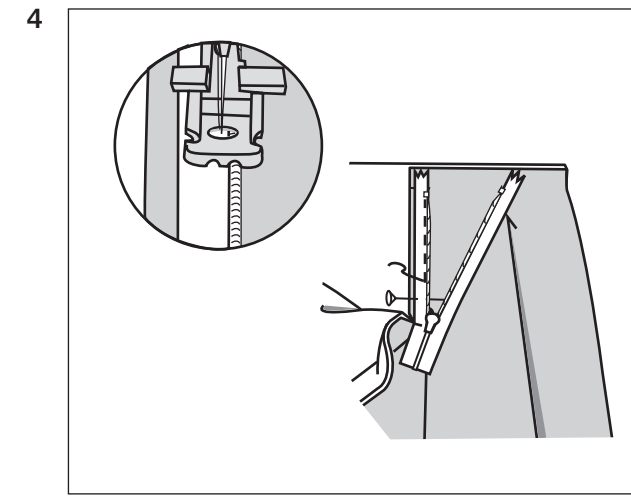
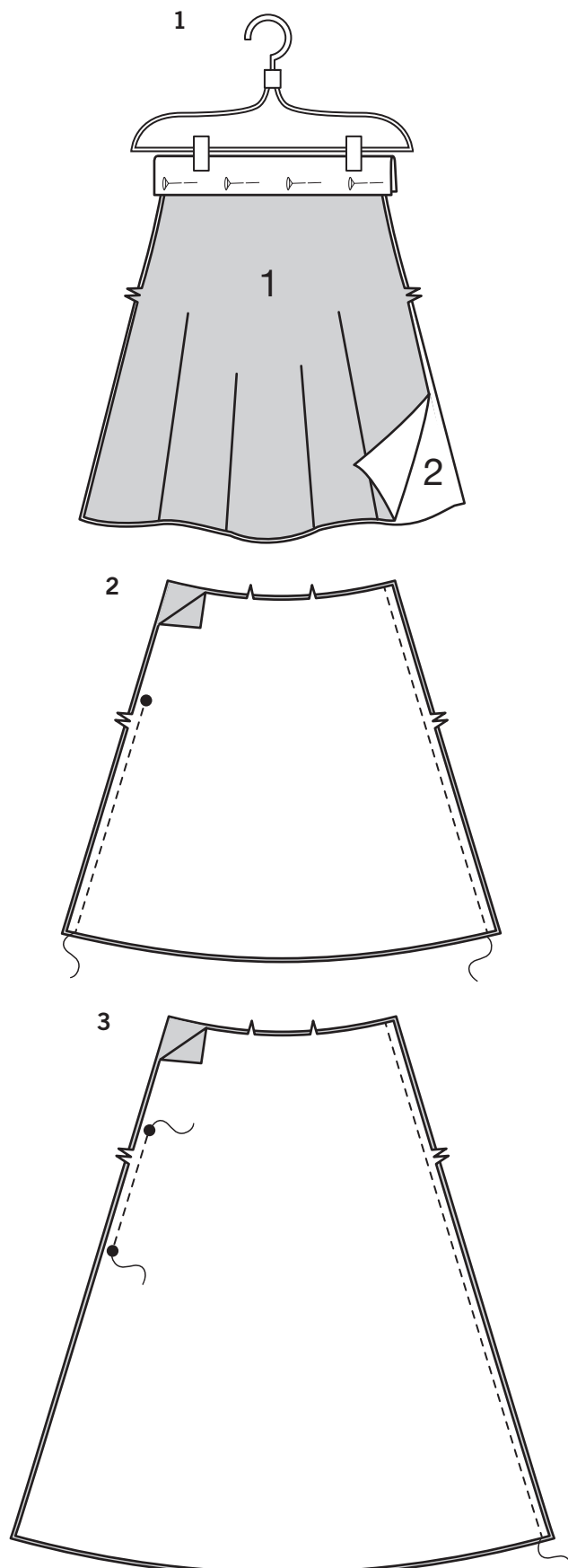
SKIRT A, B

FRONT AND BACK

1. Pin FRONT (1) and BACK (2) waistline edges together. Pin edges to a remnant of woven fabric. Hang remnant over hanger or shower rod, keeping waistline straight. Allow to hang 24 hours, permitting bias to set.
Re-Pin Pattern Tissue to front and back. Mark new cutting lines as necessary and transfer all markings.

2. **VIEW A:** Pin front to back at sides. Stitch, leaving left side open above large circle.

3. **VIEW B:** Pin front to back. Stitch right side. Stitch left side between large circles.



NOTE: Use special invisible zipper foot when stitching invisible zipper.

4. Open zipper. On outside, pin zipper to front opening edge, face down in seam allowance, placing zipper tape 1/4" (6mm) down from upper edge of fabric and zipper teeth on seamline. Position left-hand groove of zipper foot over teeth; stitch close to teeth, ending at large circle.

5. Close zipper. Pin remaining zipper tape to back opening edge, placing zipper teeth on seamline.

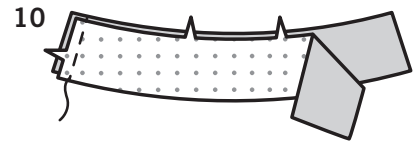
6. Open zipper. Position right-hand groove of zipper foot over teeth; stitch to large circle.

7. Close zipper. Slide zipper foot to notch on the left. Pin front and back sections together below zipper. Position and lower needle slightly above and to the left of zipper stitching at large circle. Stitch side seam below large circle.

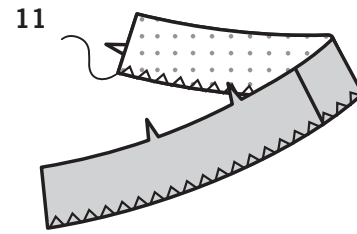
8. Stitch or hand sew each end of zipper tape to seam allowances, keeping back free when stitching.

FACING

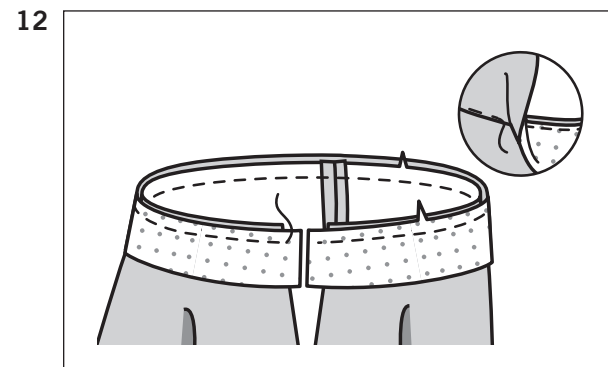
9. Pin INTERFACING (3) and INTERFACING (4) to wrong side of FRONT FACING (3) and BACK FACING (4). Fuse, following manufacturer's instructions.



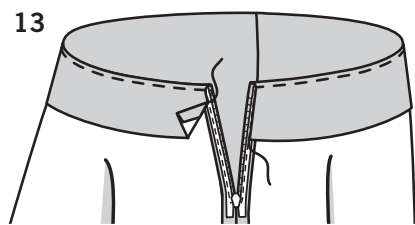
10. Pin front facing to back facing. Stitch notched end.



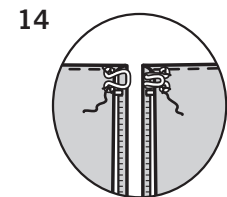
11. **FINISH** lower edge of facing.



12. With right sides together, pin facing to upper edge of skirt, matching centers. Stitch. Trim. **UNDERSTITCH** facing.

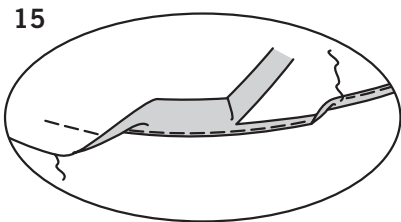


13. Turn facing to inside, turning in ends to clear zipper teeth. Press. **SLIPSTITCH** to zipper tape.

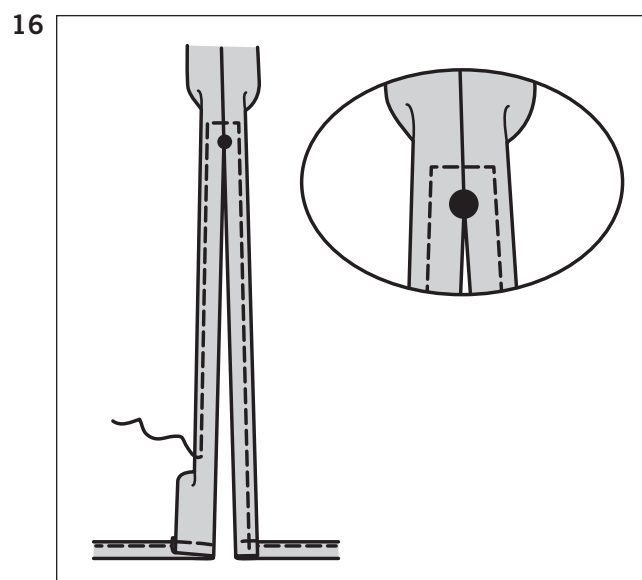


FINISHING

14. Sew hook and eye to side opening edges above zipper.



15. Try on skirt; re-mark hem, if necessary. Trim lower edge to within 5/8" (1.5cm) of marking. To hem lower edge of skirt, stitch 1/2" (13mm) from raw edge. Turn in and press alongside stitching, as shown. Trim very close to stitching. Turn in again along trimmed edge. Stitch in place.



16. **VIEW B:** Make 5/8" (1.5cm) **NARROW HEM** at side opening edges, tapering to nothing above large circle. Pivot across seam 1/4" (6mm) above large circle when stitching.

INFORMACION DE COSTURA

Los términos de costura que aparecen en **NEGRITAS** en las Instrucciones de Costura se explican a continuación.

ACABAR - Coser a 6mm del borde no terminado y acabar con una de las siguientes formas: cortar en zigzag, sobrehilar o doblar hacia adentro a lo largo del pespunte y coser cerca al doblar o remallar.

OPCIONAL PARA DOBLADILLOS: Aplicar cinta de extrafort.

DOBLADILLO ANGOSTO - Doblar hacia adentro el dobladillo. Planchar, embebiendo la amplitud si es necesario. Abrir el dobladillo. Doblar nuevamente hacia adentro de modo que el borde no terminado quede a lo largo del pliegue. Planchar. Doblar hacia adentro a lo largo del pliegue. Coser.

PUNTO DE DOBLADILLO - (Este se utiliza para unir dos bordes doblados o un borde doblado con una superficie plana). Deslizar la aguja a través del borde doblado; luego coger un hilo del doblar o de la superficie opuestos).

COSER POR DEBAJO - Abrir el refuerzo o la parte de abajo de la prenda. Coser el refuerzo o la parte de abajo al margen de costura cerca a la costura.

FALDA A, B

FRENTE Y ESPALDA

1. Prender juntos con alfileres los bordes de la cintura del **FRENTE** (1) y de la **ESPALDA** (2). Prender con alfileres los bordes a un retazo de tela tejida.

Colgar el retazo sobre un colgador o la varilla de la ducha, manteniendo la cintura recta.

Dejar colgar durante 24 horas, permitiendo la caída natural del sesgo. Volver a prender con alfileres la pieza de patrón al frente y espalda.

Marcar las nuevas líneas de corte como sea necesario y transferir todas las marcas.

2. **MODELO A:** Prender con alfileres el frente a la espalda por los costados. Coser, dejando abierto el costado izquierdo sobre el círculo grande.

3. **MODELO B:** Prender con alfileres el frente a la espalda. Coser el costado derecho. Coser el costado izquierdo entre los círculos grandes.

4. Abrir la cremallera, por fuera, prender con alfileres la cremallera al borde de la abertura del frente, boca abajo en el margen de costura, colocando la cinta de la cremallera a 6 mm del borde superior de la tela y los dientes de la cremallera sobre la línea de costura.

Colocar la ranura izquierda del pie de cremallera sobre los dientes; coser cerca a los dientes, terminando en el círculo grande.

5. Cerrar la cremallera. Prender con alfileres la otra cinta de la cremallera al borde de la abertura de la espalda, colocando la cremallera sobre la línea de costura.

6. Abrir la cremallera. Colocar la ranura derecha del pie de cremallera sobre los dientes; coser hasta el círculo grande.

7. Cerrar la cremallera. Deslizar el pie de cremallera hacia el corte a la izquierda. Prender con alfileres las piezas del frente y espalda juntas debajo de la cremallera. Posicionar y bajar la aguja ligeramente sobre y hacia la izquierda del pespunte de la cremallera en el círculo grande. Coser la costura del costado debajo del círculo grande.

8. Coser a máquina o a mano cada extremo de la cinta de la cremallera a los márgenes de costura, manteniendo la espalda suelta al coser.

VISTA

9. Prender con alfileres la **ENTRETELA** (3) y la **ENTRETELA** (4) al revés de la **VISTA DEL FRENTE** (3) y de la **VISTA DE LA ESPALDA** (4). Adherir, siguiendo las instrucciones del fabricante.

10. Prender con alfileres la vista del frente a la vista de la espalda. Coser el extremo con corte.

11. **ACABAR** el borde inferior de la vista.

12. Derecho con derecho, prender con alfileres la vista al borde superior de la falda, coincidiendo los centros. Coser. Recortar. **COSER POR DEBAJO** la vista.

13. Voltear la vista hacia dentro, doblando hacia dentro los extremos para despejar los dientes de la cremallera. Asentar. Coser a la cinta de la cremallera con **PUNTO DE DOBLADILLO**.

ACABADO

14. Coser el corchete a los bordes de la abertura del costado sobre la cremallera.

15. Probarse la falda; volver a marcar el dobladillo si es necesario. Recortar el borde inferior a 1.5 cm de la marca. Para hacer un dobladillo en el borde inferior de la falda, coser a 13 mm del borde no terminado. Doblar hacia dentro y asentar a lo largo del pespunte, como se indica. Recortar muy cerca al pespunte. Doblar hacia dentro a lo largo del borde recortado. Coser en su lugar.

16. **MODELO B:** Hacer un **DOBLADILLO ANGOSTO** de 1.5 cm en los bordes de la abertura del costado, reduciendo gradualmente sobre el círculo grande. Girar a través de la costura a 6 mm sobre el círculo grande al coser.