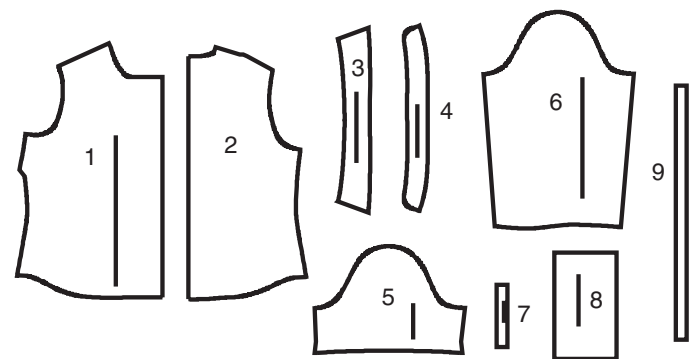


NEW LOOK® N6790

www.simplicity.com info@simplicity.com 1-888-588-2700

Thank you for purchasing this New Look pattern. We made every effort to provide you with a high quality product. Gracias por haber comprado este patrón de New Look. Hemos hecho todos los esfuerzos para ofrecerle un producto de alta calidad.

9 PIECES



BLOUSE A, B

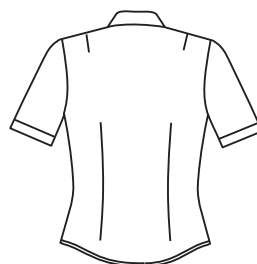
- 1 FRONT
- 2 BACK
- 3 COLLAR
- 4 COLLAR BAND
- 5 SLEEVE A
- 6 SLEEVE B
- 7 CONTINUOUS LAP B
- 8 CUFF B
- 9 GUIDE FOR BUTTONHOLES AND BUTTONS



A



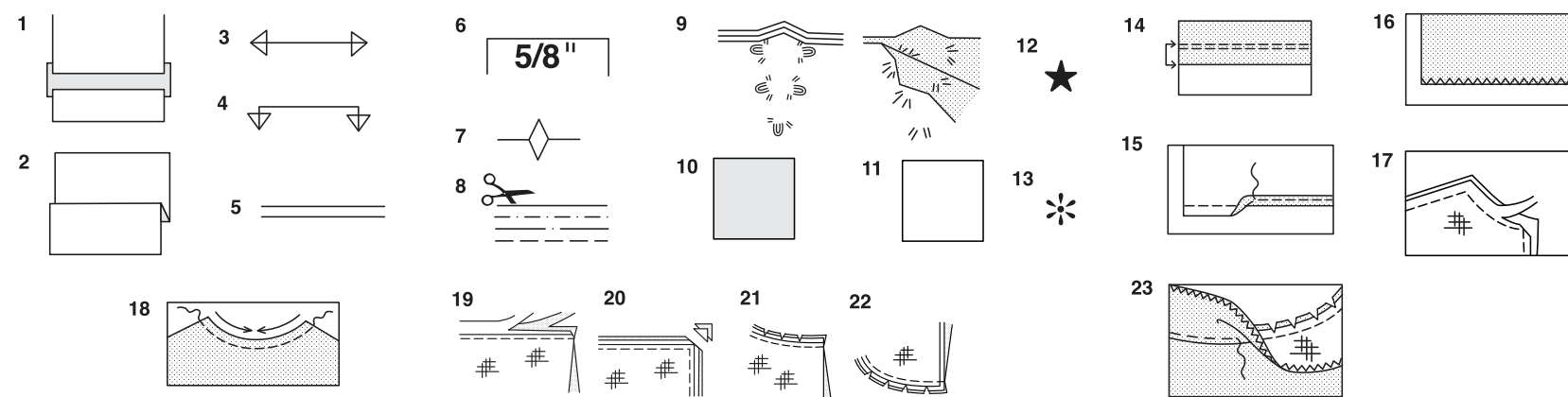
B



A



B



How To Use Your Multi Size Pattern

First Prepare Your Pattern

Select the pattern pieces according to the view you are making.

This pattern is made to body measurements with ease allowed for comfort and style. If your body measurements differ from those on the pattern envelope adjust the pieces before placing them on the fabric.

Check your back neck to waist and dress length, if necessary, alter the pattern. Lengthening and shortening lines are indicated.

- 1. **TO LENGTHEN** : Cut pattern between printed lines and place paper underneath. Spread pattern the required amount and pin to paper.
- 2. **TO SHORTEN** : Fold at the printed lines to form a pleat half the amount to be shortened, ie 1/2" (1.3cm) deep to shorten 1" (2.5cm).

Study Your Pattern Markings

- 3. **STRAIGHT GRAIN** : Place an even distance from selvage or a straight thread.
- 4. **FOLD** : Place on fold of fabric.
- 5. **LENGTHENING AND SHORTENING LINES.**
- 6. **SEAM ALLOWANCE** : 5/8" (1.5cm) unless otherwise stated.
- 7. **NOTCHES** : Match notches.
- 8. **CUTTING LINES** : Multi patterns have different cutting lines for different sizes.
- 9. **TAILOR-TACKS** : With double thread make two loose stitches forming loop through fabric layers and pattern leaving long ends. Cut loop to remove pattern. Snip thread between fabric layers. Leave tufts.

Cutting Layouts

Cutting Directions

FOR FOLDED AND DOUBLE LAYER FABRIC - Place fabric with right side inside and pin pattern on wrong side of fabric.

FOR SINGLE LAYER - Pin pattern on right side of fabric. NOTE: Pattern pieces may interlock more closely for smaller sizes. Cut notches out from cutting line.

BEFORE removing pattern from fabric, transfer all pattern markings using tailor tacks or dressmaking tracing paper.

- 10. **KEY:** pattern printed side down
- 11. **KEY:** pattern printed side up
- 12. **KEY:** Cut out all pieces except pieces that extend beyond folded fabric, then open out fabric and on RIGHT side of fabric, cut in positions as shown.
- 13. **KEY:** For with and without nap layouts ensure fabric is placed with nap or design running in same direction.

Before pinning to fabric, press tissue pattern with a warm dry iron to remove creases.

Sewing Directions

Fabric Key	Right Side	Wrong Side	Interfacing	Lining

Sew garment following **Sewing Directions**.

PIN or machine-baste seams matching notches.

STITCH 5/8" (1.5cm) seams unless otherwise stated.

PRESS seams open unless otherwise indicated, clipping when necessary so seams will lie flat.

14. **EASE-STITCH** or **GATHER** - Loosen needle tension slightly. With RIGHT side up, stitch 5/8" (1.5cm) from cut edge using a long stitch. Stitch again 1/4" (6mm) away in the seam allowance.

EDGE FINISH - Neaten raw edges of seams, hems and facings using one of the following methods.

- 15. Stitch 1/4" (6mm) from edge, turn under along stitching and stitch.
- 16. Zig-zag or overlock raw edges.

17. **INTERFACING** — Pin interfacing to WRONG side of fabric. Cut across corners that will be enclosed with seams. Machine-baste 1/2" (1.3cm) from cut edge. (Shown only on first illustration). Trim interfacing close to machine-basting. For FUSIBLE interfacing, follow manufacturer's directions.

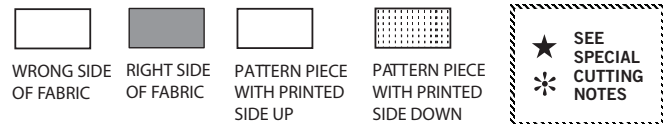
18. **STAY-STITCH** —Stitch 1/2" (1.3cm) from cut edge, in direction of arrows: (Shown only in the first illustration).

LAYERING — Trim seam allowance in layers.

- 19. Layer enclosed seams
- 20. Trim corners
- 21. Clip inner curves
- 22. Notch outer curves

23. **UNDERSTITCH** —Press facing away from garment; press seam toward facing. Facing side up, understitch close to seam through facing and seam allowances.

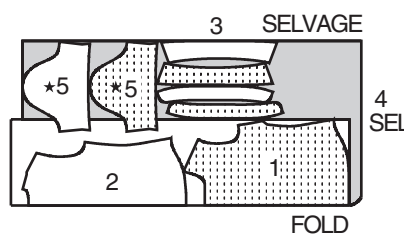
Cutting Layouts



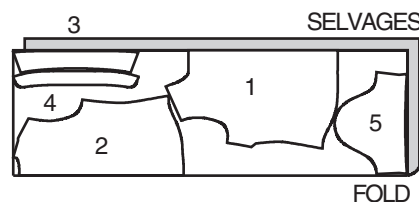
BLOUSE A

USE PIECES 1 2 3 4 5

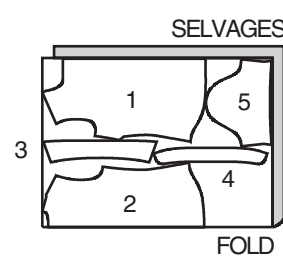
1A 45" (115CM) WITH/WITHOUT NAP SIZES 6 8 10 12 14



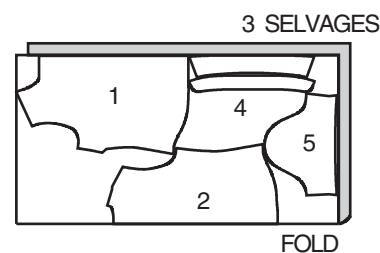
1B 45" (115CM) WITH/WITHOUT NAP SIZES 16 18



1C 60" (150CM) WITH/WITHOUT NAP SIZES 6 8 10 12



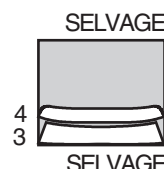
1D 60" (150CM) WITH/WITHOUT NAP SIZES 14 16 18



LIGHTWEIGHT SEW-IN INTERFACING A

USE PIECES 3 4

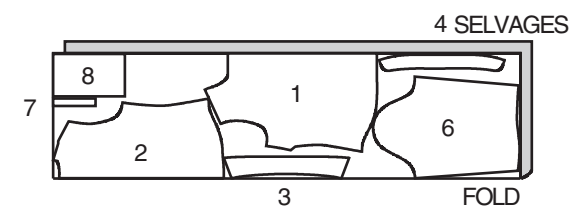
2 20" (51CM) ALL SIZES



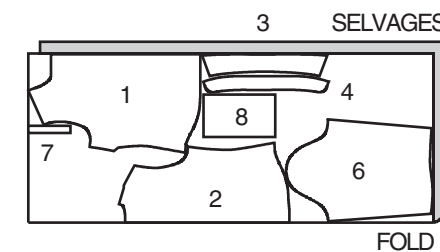
BLOUSE B

USE PIECES 1 2 3 4 6 7 8

3A 45" (115CM) WITH/WITHOUT NAP ALL SIZES



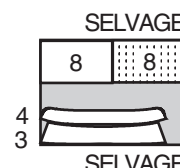
3B 60" (150CM) WITH/WITHOUT NAP ALL SIZES



LIGHTWEIGHT SEW-IN INTERFACING B

USE PIECES 3 4 8

4 20" (51CM) ALL SIZES



Español

BLUSA A

USE LAS PIEZAS 1 2 3 4 5

1A 45" (115CM) CON/SIN PELUSA TALLAS 6 8 10 12 14

1B 45" (115CM) CON/SIN PELUSA TALLAS 16 18

1C 60" (150CM) CON/SIN PELUSA TALLAS 6 8 10 12

1D 60" (150CM) CON/SIN PELUSA TALLAS 14 16 18

ENTRETELA LIGERA PARA COSER A

USE LAS PIEZAS 3 4

2 20" (51CM) TODAS LAS TALLAS

BLUSA B

USE LA PIEZAS 1 2 3 4 6 7 8

3A 45" (115CM) CON/SIN PELUSA TODAS LAS TALLAS

3B 60" (150CM) CON/SIN PELUSA TODAS LAS TALLAS

ENTRETELA LIGERA PARA COSER B

USE LAS PIEZAS 3 4 8

4 20" (51CM) TODAS LAS TALLAS

SELVAGES= ORILLAS FOLD= DOBLEZ

GLOSSARY

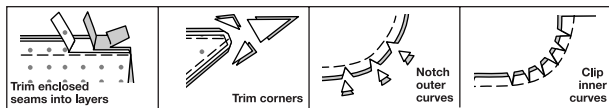
SEWING INFORMATION

5/8" (1.5cm) SEAM ALLOWANCES ARE INCLUDED,
(unless otherwise indicated)

ILLUSTRATION SHADING KEY

Right Side	Wrong Side	Interfacing	Lining	Underlining

Press as you sew. Press seams flat, then press open, unless otherwise instructed. Clip seam allowances, where necessary, so they lay flat.



Sewing terms appearing in **BOLD TYPE** in Sewing Instructions are explained below.

EASESTITCH - Stitch along seamline, using long machine stitches. Pull thread ends when adjusting to fit.

NOTE: For sleeve caps, make a second row of long machine stitches 1/4"(6mm) away in seam allowance. for more control.

EDGESEW - Stitch close to finished edge or seam.

NARROW HEM - Press under hem allowance as indicated on tissue pattern. To form narrow hem, tuck under raw edge to meet crease. Press. Stitch hem in place.

REINFORCE - Stitch along seamline where indicated in sewing instructions, using small machine stitches.

SLIPSTITCH - Slide needle through a folded edge, then pick up a thread of underneath fabric.

STAYSTITCH - Stitch 1/8"(3mm) from seamline in seam allowance (usually 1/2"(1.3cm) from raw edge).

TOPSTITCH - On outside, stitch 1/4"(6mm) from edge, seam or previous stitching, using presser foot as guide, or stitch where indicated in instructions.

UNDERSTITCH - Open out facing or underside of garment; stitch to seam allowance close to seam.

BLOUSE A, B

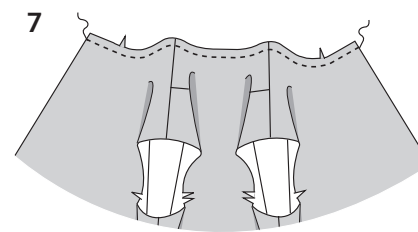
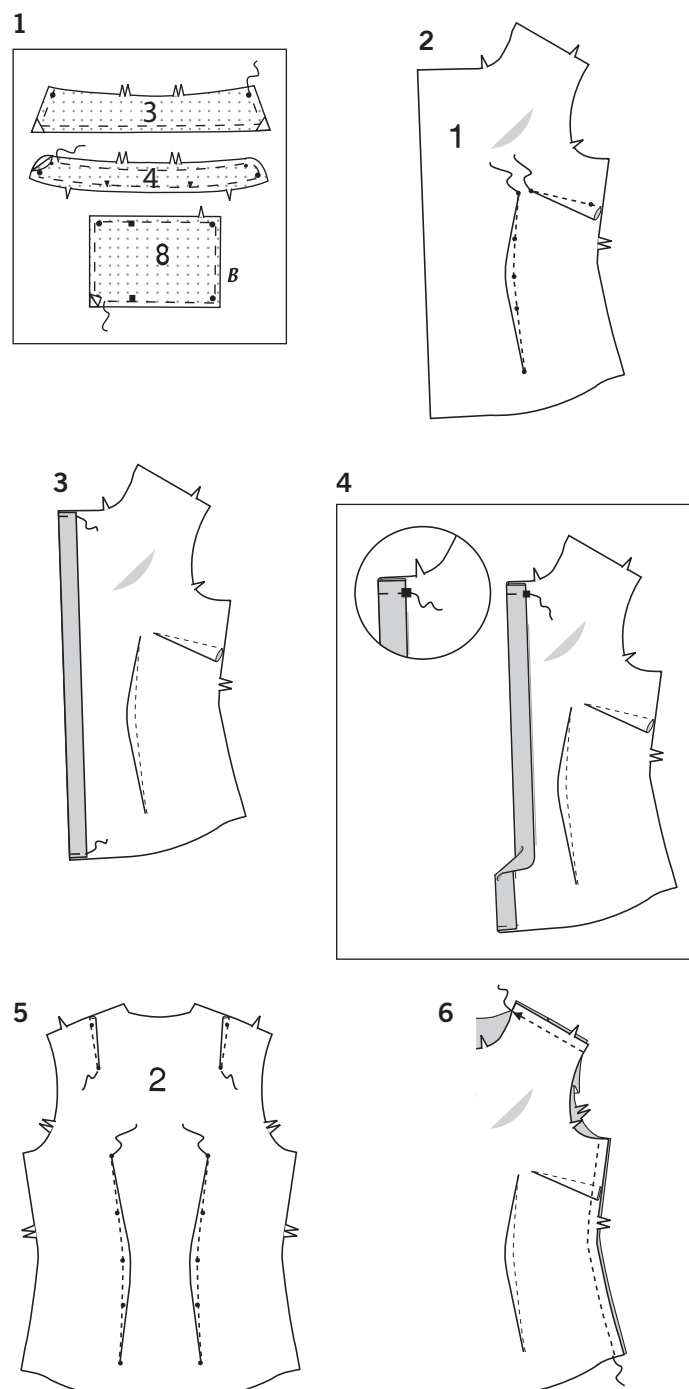
NOTE: Under each highlighted sub-heading, the first view will be illustrated, unless otherwise indicated.

INTERFACING

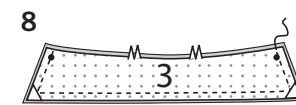
- Trim corners from INTERFACING, as shown. Pin interfacing to wrong side of each matching FABRIC section; baste in place.

FRONT AND BACK

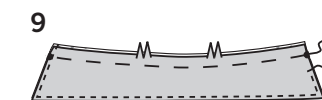
- Stitch darts in FRONT (1). Press bust dart down. Press remaining dart toward center.
- Turn front opening edge to inside along outer foldline. Press. Baste across upper and lower edge.
- Turn front self facing to inside along remaining foldline. Press. Baste across upper edge.
- Stitch darts in BACK (2). Press darts toward center.
- Stitch back and front sections together at shoulders and sides.



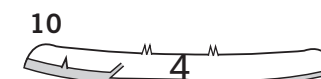
7. **STAYSTITCH** blouse neck edge.



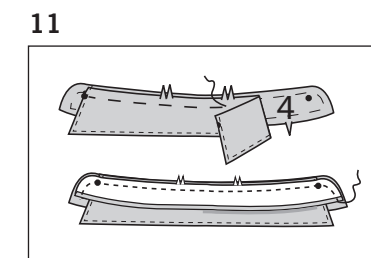
8. Stitch COLLAR (3) sections together, leaving edge with symbols open. Trim.



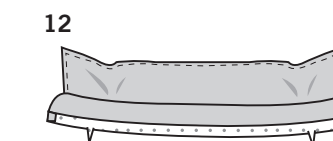
9. Turn. Press. Baste raw edges together. **EDGESEW** finished edges.



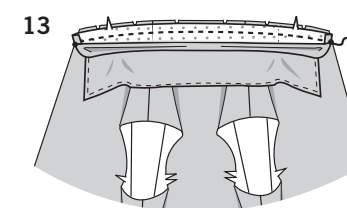
10. Turn in seam allowance on single notched edge of uninterfaced COLLAR BAND (4) section. Press, easing in fullness. Trim pressed seam allowance to 3/8"(1cm).



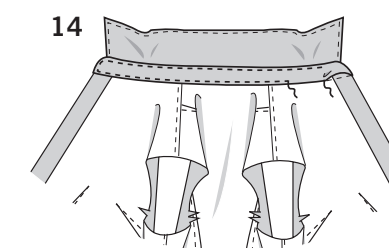
11. Pin uninterfaced side of collar to interfaced collar band between small circles. Pin uninterfaced collar band over collar; baste. Stitch, leaving neck edge open. Trim.



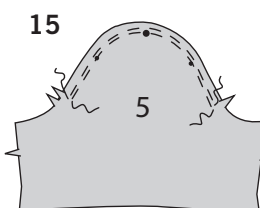
12. Turn. Press.



13. Pin collar band to neck edge, clipping blouse neck edge where necessary. Stitch, keeping pressed edge free. Trim. Press seam toward collar band.

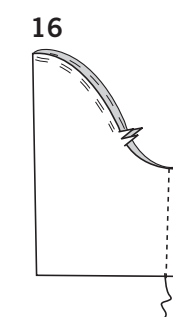


14. **SLIPSTITCH** pressed edge over seam. **EDGESEW** collar band, as shown.

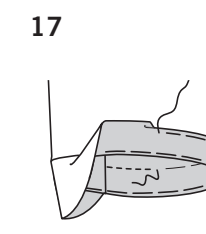


VIEW A

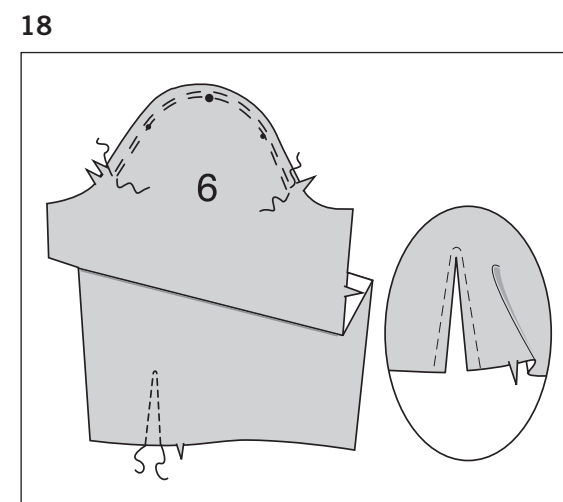
15. **EASESTITCH** upper edge of SLEEVE (5) between notches.



16. Stitch sleeve seam.



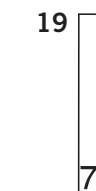
17. Turn up 1-1/4"(3.2cm) sleeve hem. Baste close to fold. Turn in 1/4"(6mm) on raw edge. Baste hem in place close to upper edge. Press. **TOPSTITCH** hem along upper basting.



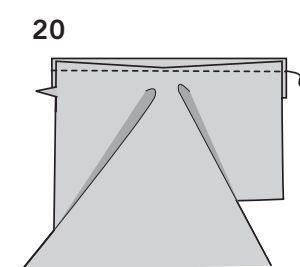
ARMHOLE EDGES

VIEW B

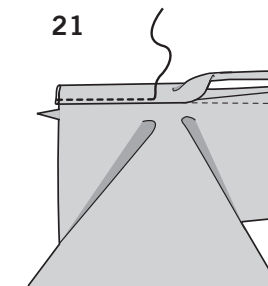
18. **EASESTITCH** upper edge of SLEEVE (6) between notches. **REINFORCE** lower edge of sleeve along stitching line. Slash between stitching to upper end.



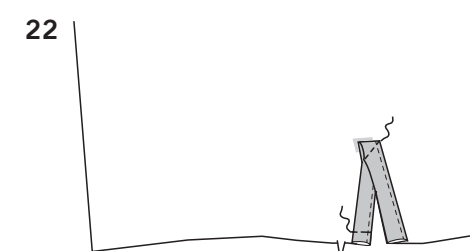
19. Turn in 1/4"(6mm) seam allowance on one long edge of CONTINUOUS LAP (7). Press.



20. Pin right side of continuous lap to wrong side of sleeve, placing remaining 1/4"(6mm) seamline along stitching. Stitch.

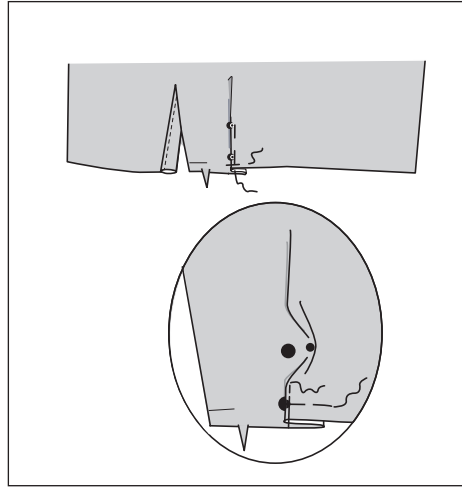


21. Press seam toward continuous lap. Turn pressed edge of continuous lap to outside over seam. Stitch. Press.

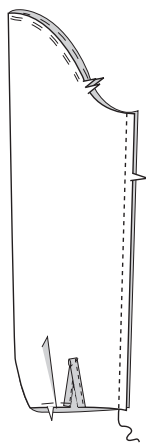


22. On inside, bring folded edges of continuous lap together. Stitch diagonally across upper end. Turn front edge of continuous lap to inside, as shown. Baste across lower edge.

23



24



23. To make pleat in sleeve, on outside, crease along line of small circles. Bring crease to lines of large circles; baste. Baste across lower edge. Press.

24. Stitch sleeve seam.

25. **EASESTITCH** lower edge of sleeve.

26. Turn in seam allowance on long unnotched edge of CUFF (8); press. Trim pressed seam allowance to 3/8"(1cm).

27. Pin cuff to sleeve, placing small circles at underarm seam and large circles at opening edges, as shown. Stitch. Trim. Press seam toward cuff.

28. With right sides together, fold cuff along foldline; stitch ends. Trim.

29. Turn. Press. **SLIPSTITCH** pressed edge over seam. **EDGESTITCH** cuff, as shown.

30. With right sides together, pin sleeve into armhole, placing large circle at shoulder seam. Adjust ease; baste. Stitch. Stitch again 1/4"(6mm) away in seam allowance. Trim close to stitching. Press seam allowances flat. Turn seam toward sleeve.

FINISHING

31. Turn lower edge of front self facings to outside along foldline. Stitch 5/8"(1.5cm) from lower edge. Trim, as shown.

32. Turn self facings to inside. Make 5/8"(1.5cm) **NARROW HEM** at lower edge, continuing across self facings when stitching.

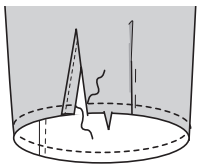
33. Place **GUIDE FOR BUTTONHOLES AND BUTTONS** (9) on right front, having edges of tissue even with finished edges of garment, as shown. Transfer markings. Make buttonholes on right front and collar band at markings.

34. Lap opening edges, matching centers. Using buttonholes as guides, make button markings on left front. Sew buttons to left front and collar band at markings.

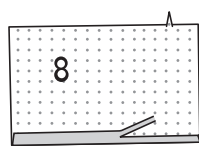
VIEW B

35. Make buttonholes in cuff at markings. Sew buttons to cuff at markings.

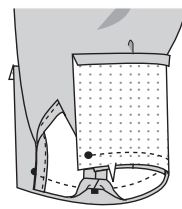
25



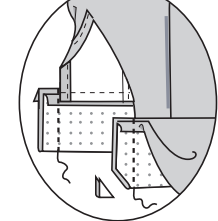
26



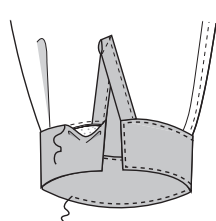
27



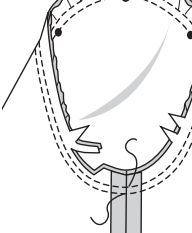
28



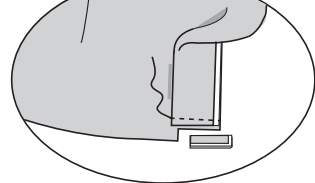
29



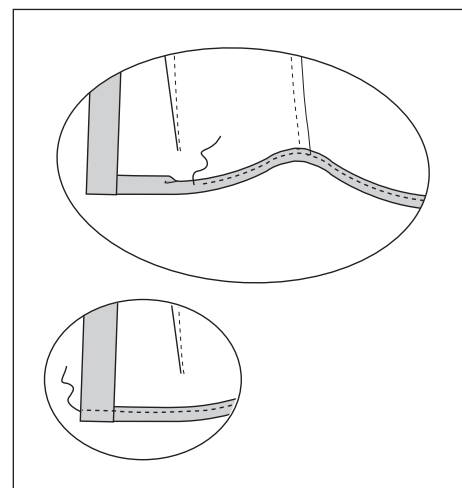
30



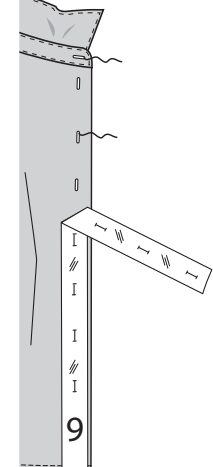
31



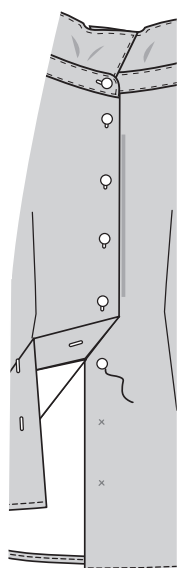
32



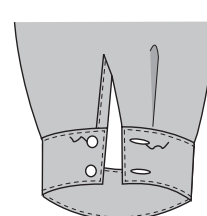
33



34



35



BLUSAS A, B

NOTA: Debajo de cada subtítulo resaltado se ilustrará la primera vista, a menos que se indique algo en contrario.

ENTRETELA

1. Recorte las esquinas de la entreteleta, tal como se ilustra. Sujete con alfileres la entreteleta al revés de cada sección de la tela casándolo; hilvane en su lugar.

FRENTE Y ESPALDA

2. Cosa las pinzas en el FRENTE (1). Planche la pinza del busto hacia abajo. Planche la pinza restante hacia el centro.

3. Voltee el borde abierto frontal al interior, a lo largo de la línea del dobléz exterior. Planche. Hilvane a través del borde superior e inferior.

4. Voltee la vista frontal al interior, a lo largo de la línea del dobléz restante. Planche. Hilvane a través del borde superior.

5. Cosa las pinzas en la espalda (2). Planche las pinzas hacia el centro.

6. Cosa conjuntamente las secciones frontal y de la espalda, en las costuras de los hombros y las laterales.

7. **HAGA PUNTADA DE SOSTEN** al borde del escote de la blusa.

8. Cosa conjuntamente las secciones del CUELLO (3), dejando un borde con los símbolos abiertos. Recorte.

9. Voltee, Planche. Hilvane conjuntamente los bordes no terminados. **HAGA PUNTADA DE BORDE** a los bordes terminados.

10. Voltee el margen de la costura, sobre el borde con muesca sencilla de la sección de la BANDA DEL CUELLO (4) sin entretelear. Planche, abarcando toda la amplitud. Recorte el margen de la costura doblado a 3/8"(1cm).

11. Sujete con alfileres el lado sin entreteelado del cuello, a la banda entreteelada del cuello entre los círculos pequeños. Sujete con alfileres la banda del cuello sin entreteelado sobre el cuello; hilvane. Cosa, dejando abierto el borde del escote. Recorte.

12. Recorte y Planche.

13. Sujete con alfileres la banda del cuello al borde del escote, haciendo cortes al borde del escote de la blusa, donde lo considere necesario. Cosa, manteniendo libre el borde doblado. Recorte. Planche la costura hacia la banda del cuello.

14. **HAGA PUNTADA FALSA** al borde doblado sobre la costura. **HAGA PUNTADA DE BORDE** a la banda del cuello, tal como se muestra.

MODELO A

15. **HAGA PUNTADA FRUNCIDA** al borde superior de la MANGA (5) entre las muescas.

16. Cosa la costura de la manga.

17. Voltee hacia arriba el dobladillo de la manga a 1-1/4"(3.2cm). Hilvane cerca del dobléz. Voltee a 1/4"(6mm) sobre el borde no terminado. Hilvane el dobladillo en su lugar cerca del borde superior. Planche. **HAGA PUNTADA DE ADORNO** al dobladillo a lo largo del hilvanado superior.

BORDES DE LA SISA

MODELO B

18. **HAGA PUNTADA FRUNCIDA** al borde superior de la MANGA (6) entre las muescas. REFUERCE el borde inferior de la manga. A lo largo de la línea de la puntada. Haga cortes entre la puntada y el extremo superior.

19. Voltee el margen de la costura a 1/4"(6mm), sobre un borde largo de las vueltas continuas (7). Planche.

20. Sujete con alfileres el lado derecho de la vuelta continua hasta el revés de la manga, colocando la línea de la costura restante a 1/4"(6mm), a lo largo de la puntada. Cosa.

21. Planche la costura hacia la vuelta continua. Voltee el borde doblado de la vuelta continua al exterior sobre la costura. Cosa. Planche

22. En el interior, lleve conjuntamente los bordes doblados de la vuelta continua. Cosa diagonalmente a través del extremo superior. Voltee el borde frontal de la vuelta continua al interior, como se muestra. Hilvane a través del borde inferior.

23. Para hacer el pliegue en la manga, en el exterior, pliegue a lo largo de la línea de los círculos pequeños. Lleve el pliegue a las líneas de los círculos grandes; hilvane. Hilvane a través del borde inferior. Planche.

24. Cosa la costura de la manga.

25. **HAGA PUNTADA FRUNCIDA** al borde inferior de la manga.

26. Voltee el margen de la costura, sobre el borde largo sin muescas del PUÑO (8); planche. Recorte el margen de la costura doblado a 3/8"(1cm)

27. Sujete con alfileres el puño a la manga, colocando los círculos pequeños en la costura de debajo de los brazos y los círculos grandes, en los bordes abiertos, tal y como se muestra. Cosa. Recorte. Planche la costura hacia el puño.

28. **DERECHO CON DERECHO**, doble el puño a lo largo de la línea del dobléz; cosa los extremos. Recorte.

29. Voltee. Planche. **HAGA PUNTADA FALSA** al borde doblado sobre la costura. **HAGA PUNTADA DE BORDE** al puño, como se muestra.

30. **DERECHO CON DERECHO**, sujete con alfileres la manga dentro de la sisa, colocando el círculo grande en la costura de los hombros. Ajuste el fruncido; hilvane. Cosa. Cosa de nuevo a 1/4"(6mm) a distancia del margen de la costura. Recorte cerca de la puntada. Planche planos los márgenes de la costura. Voltee la costura hacia la manga.

TERMINADO

31. Voltee el borde inferior de la vista frontal al exterior y a lo largo de la línea del dobléz. Cosa a 5/8"(1.5cm) del borde inferior. Recorte, tal como se muestra.

32. Voltee la vista al interior. Haga un **DOBLADILLO ANGOSTO** de 5/8"(1,5cm) en el borde inferior, continuando a través de la vista cuando reste cosiéndolo.

33. Coloque la **GUÍA PARA LOS OJALES Y LOS BOTONES** (9), sobre el frente derecho, teniendo emparejados los bordes del patrón con los bordes terminados de la prenda, como se muestra. Traslade las marcas. Haga los ojales en el frente derecho y la banda del cuello en las marcas.

34. Cruce los bordes abiertos, casando los centros. Usando los ojales como guías, haga las marcas para el botón sobre el frente izquierdo. Cosa los botones en el frente izquierdo y la banda del cuello sobre las marcas.

MODELO B

35. Haga los ojales en el puño sobre las marcas. Cosa los botones al puño en las marcas.