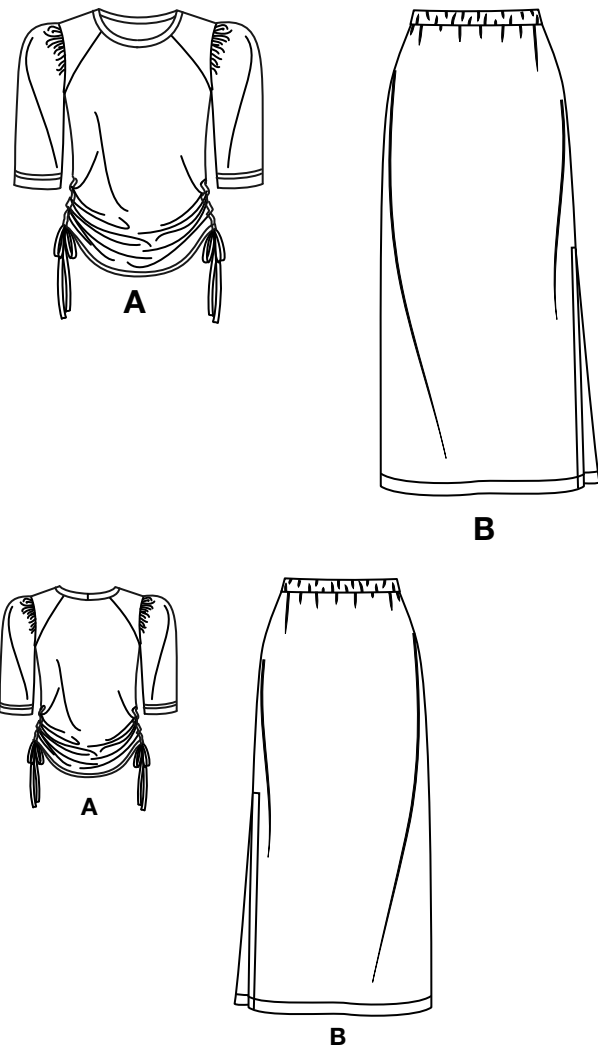


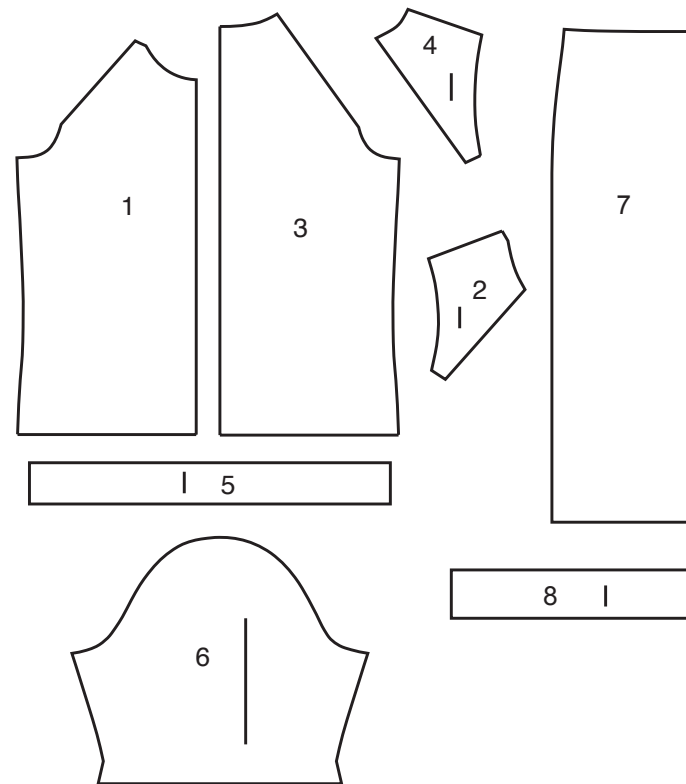
# NEWLOOK® N6782

www.simplicity.com info@simplicity.com 1-888-588-2700

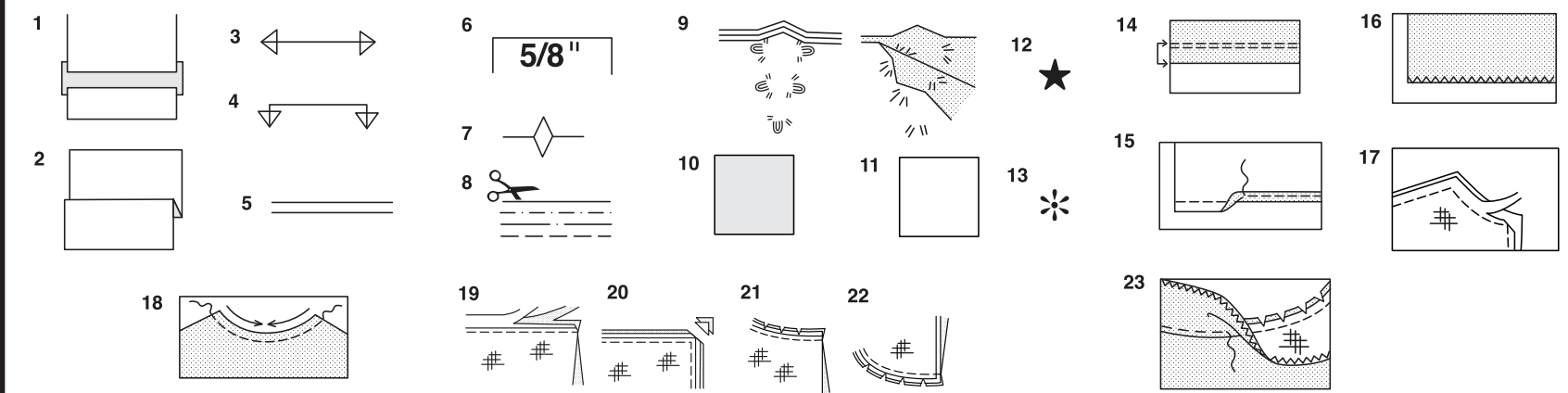
Thank you for purchasing this New Look pattern. We made every effort to provide you with a high quality product. Gracias por haber comprado este patrón de New Look. Hemos hecho todos los esfuerzos para ofrecerle un producto de alta calidad.



8 PIECES



- 1 FRONT- A
- 2 YOKE FRONT- A
- 3 BACK- A
- 4 YOKE BACK- A
- 5 NECKBAND- A
- 6 SLEEVE- A
- 7 FRONT AND BACK- B
- 8 CASING- B



### How To Use Your Multi Size Pattern

#### First Prepare Your Pattern

Select the pattern pieces according to the view you are making.

This pattern is made to body measurements with ease allowed for comfort and style. If your body measurements differ from those on the pattern envelope adjust the pieces before placing them on the fabric.

Check your back neck to waist and dress length, if necessary, alter the pattern. Lengthening and shortening lines are indicated.

1. **TO LENGTHEN** : Cut pattern between printed lines and place paper underneath. Spread pattern the required amount and pin to paper.
2. **TO SHORTEN** : Fold at the printed lines to form a pleat half the amount to be shortened, ie 1/2" (1.3cm) deep to shorten 1" (2.5cm).

#### Study Your Pattern Markings

3. **STRAIGHT GRAIN** : Place an even distance from selvage or a straight thread.
4. **FOLD** : Place on fold of fabric.
5. **LENGTHENING AND SHORTENING LINES.**
6. **SEAM ALLOWANCE** : 5/8" (1.5cm) unless otherwise stated.
7. **NOTCHES** : Match notches.
8. **CUTTING LINES** : Multi patterns have different cutting lines for different sizes.
9. **TAILOR-TACKS** : With double thread make two loose stitches forming loop through fabric layers and pattern leaving long ends. Cut loop to remove pattern. Snip thread between fabric layers. Leave tufts.

### Cutting Layouts

#### Cutting Directions

FOR FOLDED AND DOUBLE LAYER FABRIC - Place fabric with right side inside and pin pattern on wrong side of fabric.

FOR SINGLE LAYER - Pin pattern on right side of fabric. NOTE: Pattern pieces may interlock more closely for smaller sizes. Cut notches out from cutting line.

BEFORE removing pattern from fabric, transfer all pattern markings using tailor tacks or dressmaking tracing paper.

10. **KEY:** pattern printed side down
11. **KEY:** pattern printed side up
12. **KEY:** Cut out all pieces except pieces that extend beyond folded fabric, then open out fabric and on RIGHT side of fabric, cut in positions as shown.
13. **KEY:** For with and without nap layouts ensure fabric is placed with nap or design running in same direction.

Before pinning to fabric, press tissue pattern with a warm dry iron to remove creases.

#### Sewing Directions

Fabric Key	Right Side	Wrong Side	Interfacing	Lining
------------	------------	------------	-------------	--------

Sew garment following **Sewing Directions.**

**PN** or machine-baste seams matching notches.

**STITCH** 5/8" (1.5cm) seams unless otherwise stated.

**PRESS** seams open unless otherwise indicated, clipping when necessary so seams will lie flat.

14. **EASE-STITCH** or **GATHER** - Loosen needle tension slightly. With **RIGHT** side up, stitch 5/8" (1.5cm) from cut edge using a long stitch. Stitch again 1/4" (6mm) away in the seam allowance.

**EDGE FINISH** - Neaten raw edges of seams, hems and facings using one of the following methods.

15. Stitch 1/4" (6mm) from edge, turn under along stitching and stitch.
16. Zig-zag or overlock raw edges.

17. **INTERFACING** — Pin interfacing to **WRONG** side of fabric. Cut across corners that will be enclosed with seams. Machine-baste 1/2" (1.3cm) from cut edge. (Shown only on first illustration). Trim interfacing close to machine-basting. For **FUSIBLE** interfacing, follow manufacturer's directions.

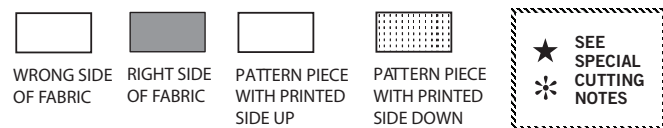
18. **STAY-STITCH** —Stitch 1/2" (1.3cm) from cut edge, in direction of arrows: (Shown only in the first illustration).

**LAYERING** — Trim seam allowance in layers.

19. Layer enclosed seams
20. Trim corners
21. Clip inner curves
22. Notch outer curves

23. **UNDERSTITCH** —Press facing away from garment; press seam toward facing. Facing side up, understitch close to seam through facing and seam allowances.

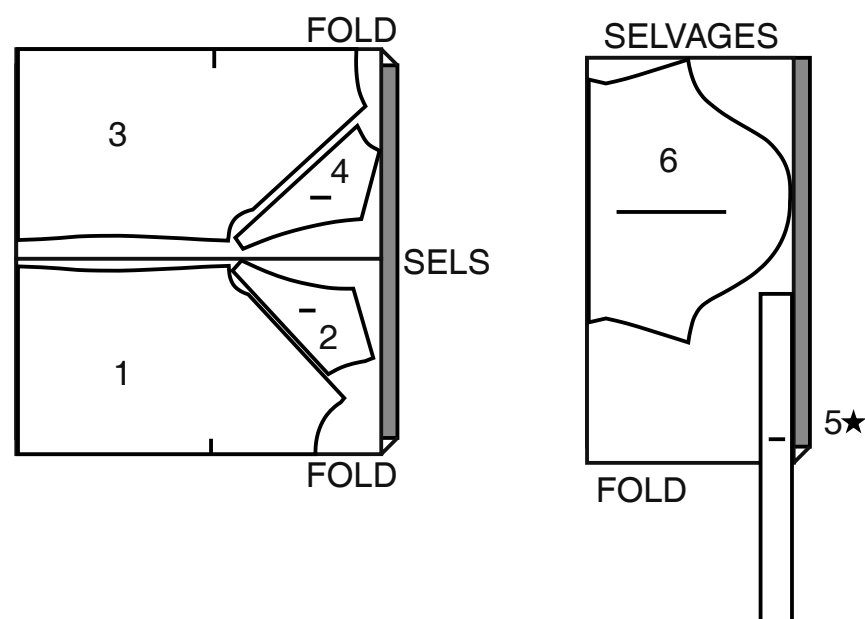
## Cutting Layouts



### TOP A

USE PIECES 1 2 3 4 5 6

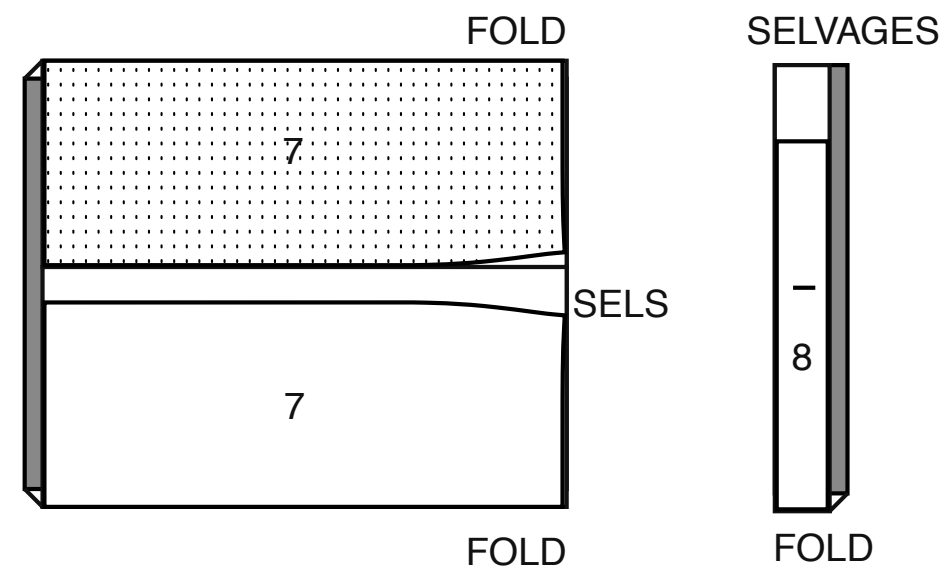
1 60" (150CM) WITH NAP ALL SIZES



### SKIRT B

USE PIECES 7 8

2 60" (150CM) WITH NAP ALL SIZES



## Español

### BLUSA A

USE LAS PIEZAS 1 2 3 4 5 6

1 60" (150CM) CON PELUSA TODAS LAS TALLAS

### FALDA B

USE LAS PIEZAS 7 8

2 60" (150CM) CON PELUSA TODAS LAS TALLAS

SELVAGES/SELS.= ORILLAS FOLD= DOBLEZ

## SIMPLY THE BEST SEWING TECHNIQUES...

## FOR KNITS

- Use a ball point or stretch needle.
- Decrease pressure on presser foot for heavy sweater knits; increase pressure for lingerie knits.
- Stretch knits need seams that are supple enough to “give” with the fabric. You can sew them with straight stitches (stretching the fabric slightly as you sew), narrow zig-zag stitches or one of the stretch stitches built into many conventional machines, or on your serger.
- Some knits require very little or no pressing while sewing. Use the appropriate temperature setting. Press lightly or use steam.
- To prevent shoulder seams from stretching, pin center of hem tape, clear elastic or twill tape along seam line on front shoulder edges, then stitch the shoulder seams.
- Raw edges of hem and facings are can be left raw, unless using a serger.
- Use a twin sewing machine needle for a double stitched hem.

## FOR OVERLOCK/SERGER

- The Serger can be used alone or as a supplement to your conventional sewing machine.
- Overlock sewing machines stitch, trim and finish all in one operation. Therefore, it is VERY important to Check Fit before stitching seams.
- Using matching color thread, baste seams and try garment on. If no adjustments are needed, overlock seams along basting.
- The three thread overlock is ideal for major seams such as shoulder, side, underarm and sleeve seams.
- For stress areas such as crotch seams and armholes, the four thread overlock/safety stitch is best...OR, use a three thread overlock, and stitch along seam with a conventional machine to reinforce.
- The two or three thread overlock stitch is a perfect finish for edges of facings, hems and seam allowances.

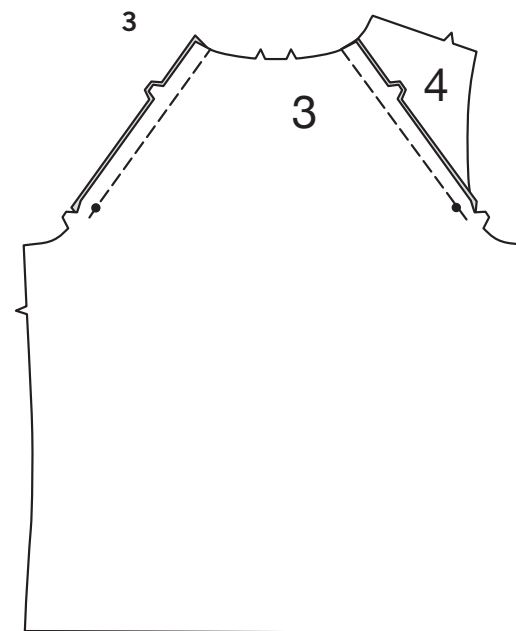
**PATTERN PIECES WILL BE IDENTIFIED BY NUMBERS THE FIRST TIME THEY ARE USED.**

**STITCH SEAMS WITH RIGHT SIDES TOGETHER UNLESS OTHERWISE STATED.**

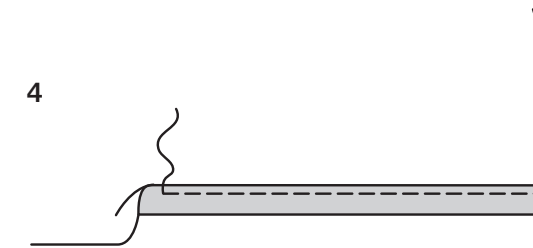
## TOP A

1. Stitch front (1) to yoke front (2), matching single notches and large dots. Press seam toward yoke.

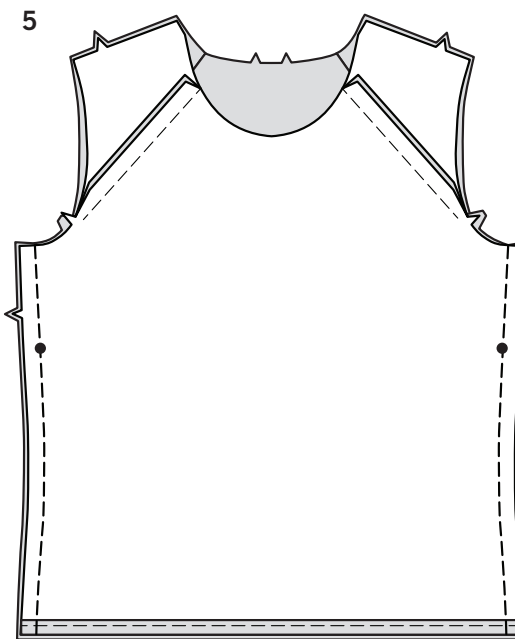
2. Press up hem on lower edge of front. Stitch OR zig-zag 1/4" (6mm) from raw.



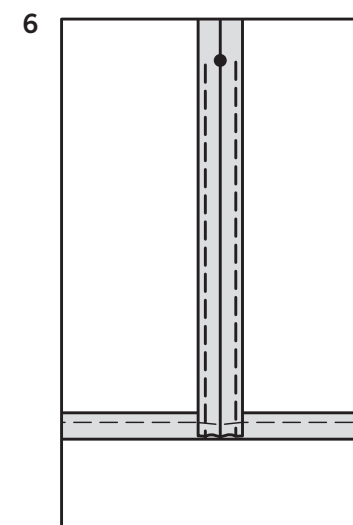
3. Stitch back (3) to yoke back (4), matching double notches and large dots. Press seam toward yoke.



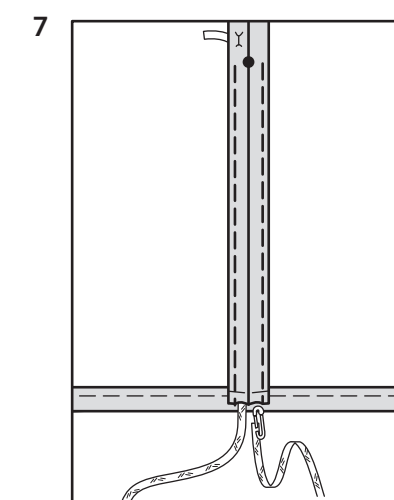
4. Press up hem on lower edge of back. Stitch OR zig-zag 1/4" (6mm) from raw.



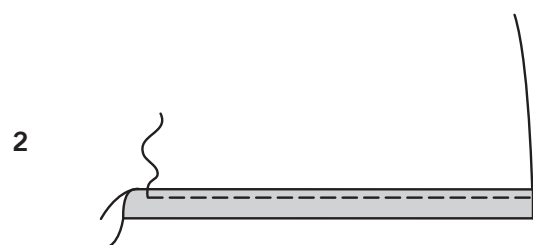
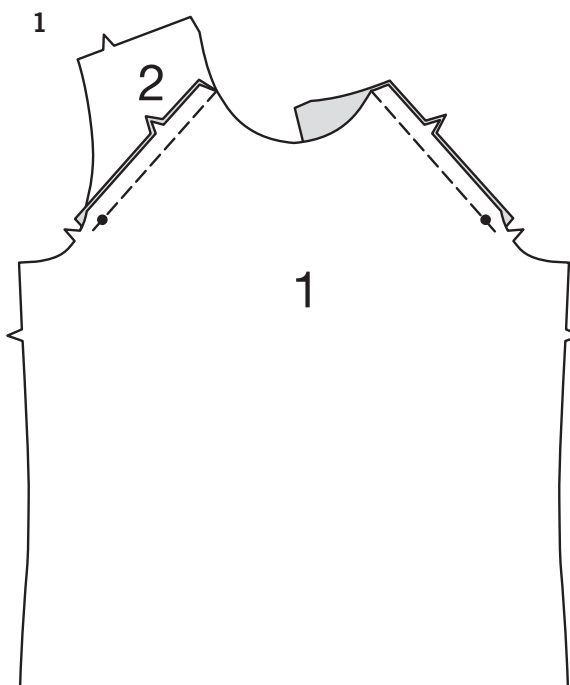
5. Pin front to back as side seams, matching large dots and lower hemmed edges. Stitch.

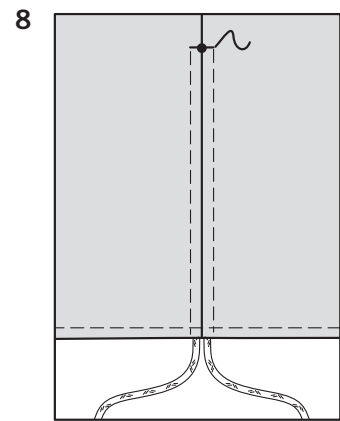


6. Press side seams open. To form casing, stitch 1/2" (1.3cm) on each side of side seam below large dot, back-stitching at each end to reinforce.

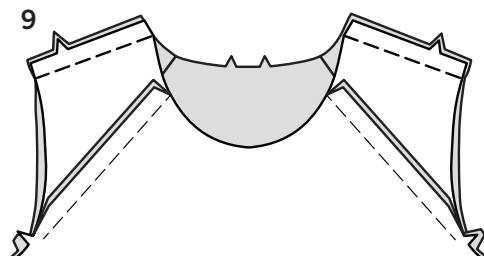


7. Cut four pieces of twill tape or ribbon, each 24" (61cm) long. Have top WRONG side out. Attach a pin to one end of drawstring and insert into opening on lower edge of top, having upper edge extending 1" (2.5cm) beyond large dots. Pin drawstring in place, placing pins on OUTSIDE.

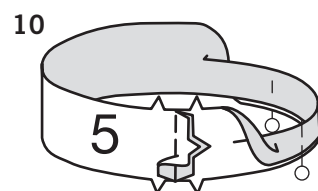




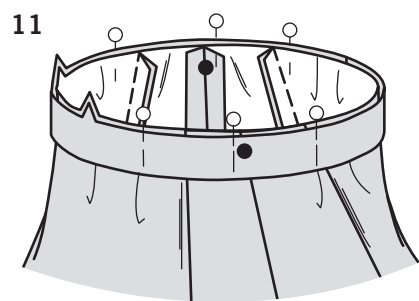
**8.** On OUTSIDE, stitch between casing stitches at end of casing, catching in drawstring; trim drawstring to within 1/2" (1.3cm) of large dot.



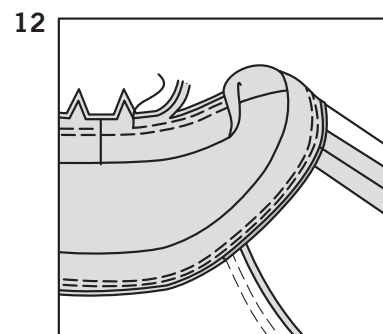
**9.** Stitch front to back at shoulder seams.



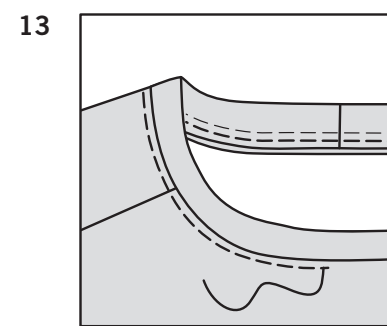
**10.** Stitch center back seam of neckband (5). Fold band in half, lengthwise, with WRONG sides together; press. Pin.



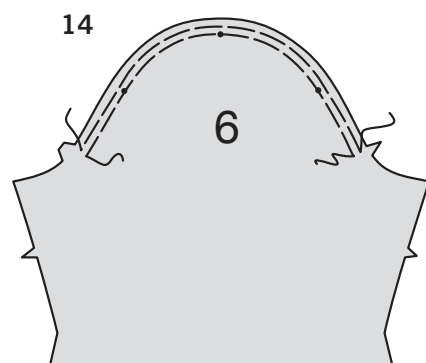
**11.** On OUTSIDE, pin neckband to neck edge, matching centers, placing small dots at shoulder seams and having raw edges even.



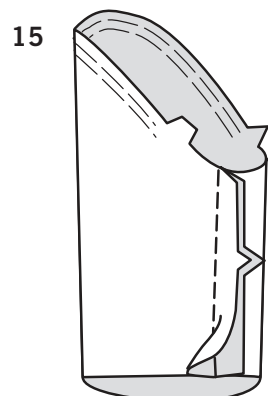
**12.** Stitch neck edge in a 3/8" seam, stretching band to fit. Stitch again 1/4" (6mm) away from first stitching within the seam allowance. Press seam toward top, pressing band out.



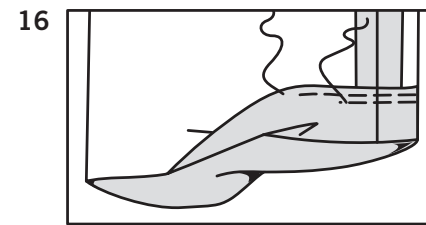
**13.** On OUTSIDE, straight or zig-zag stitch top close to neck seam.



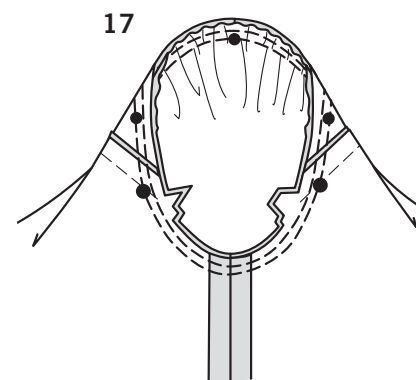
**14.** To gather top of sleeve (6) between notches, stitch along seam line and 1/4" (6mm) INSIDE seam line, using a long machine-stitch.



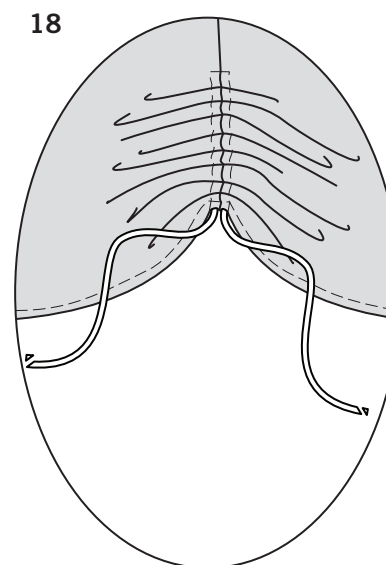
**15.** Stitch underarm seam of sleeve.



**16.** Press up hem on lower edge of sleeve. Stitch OR zig-zag 1/4" (6mm) from raw edge and 1/4" (6mm) below first stitching.



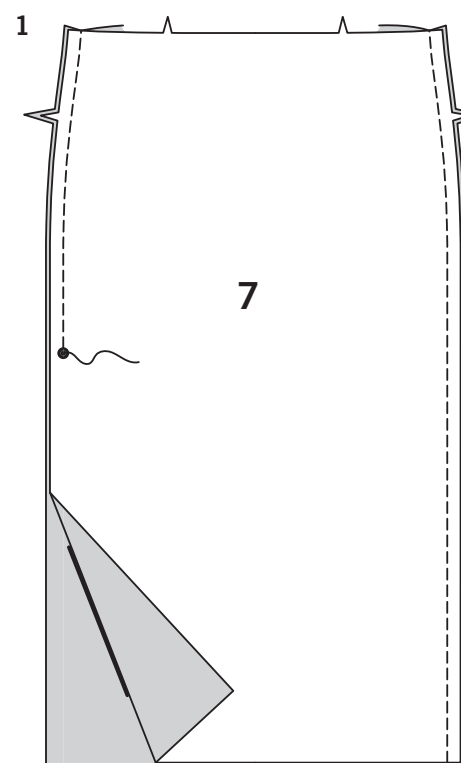
**17.** Turn sleeve RIGHT side out. Hold top WRONG side out with armhole toward you. With RIGHT sides together, pin sleeve to armhole edge with center small dot at shoulder seam, matching underarm seams, notches and remaining small dots. Pull up gathering stitches to fit. To distribute fullness evenly, slide fabric along bobbin threads. Baste. Stitch. Stitch again 1/8" (3mm) from first stitching. Trim seam below notches close to stitching. Press only the seam allowance.



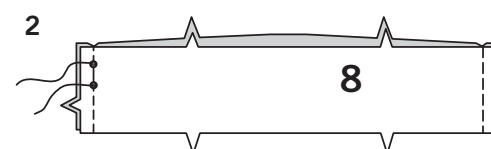
**18.** Pull up side edges of top along drawstrings, forming gathers. Try on top. Adjust gathers and fasten ends in a bow. If necessary, trim ends of draw strings at angle at desired length. If you prefer, make knots at ends.

## SKIRT B

### FRONT AND BACK

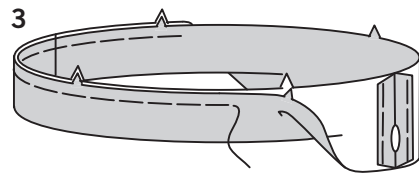


**1.** Pin FRONT AND BACK (7) sections, RIGHT sides together, matching dots. Stitch side seams, leaving left side free below dot.

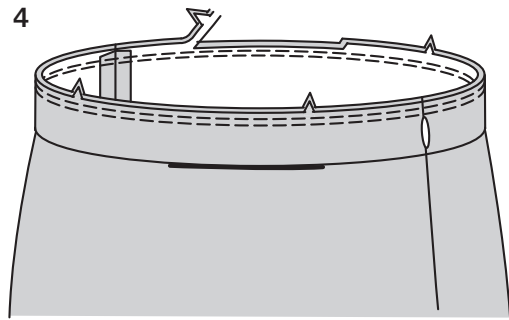


### CASING

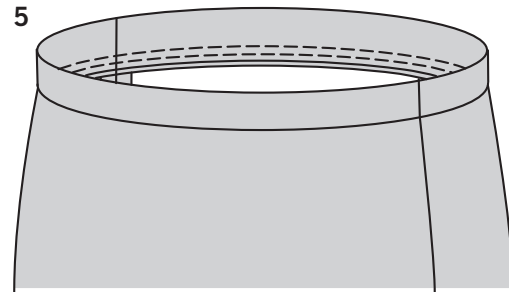
**2.** With RIGHT sides together, stitch CASING (8) sections, RIGHT sides together. Stitch side seams, leaving an opening between small dots, as shown. Back-stitch at small dots to reinforce seam. Press seams open.



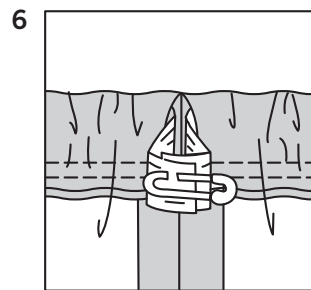
3. Fold casing in half lengthwise, WRONG sides together, having raw edges even. Baste raw edges together. The side with the opening is the underside of the casing.



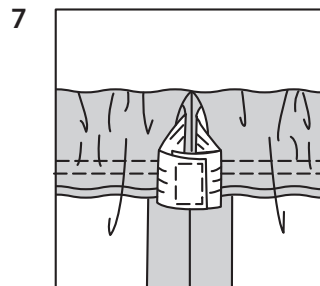
4. With the underside of casing facing you, pin casing to skirt, matching centers and side seams. Stitch along seam line, stretching casing to fit. Stitch again 1/4" (6mm) from first stitching within seam allowance. Trim close to second stitching.



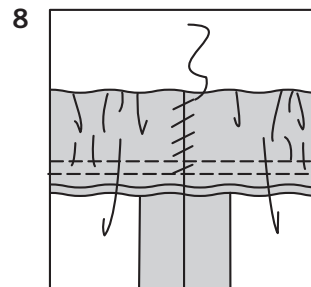
5. Press seam toward skirt, pressing casing out.



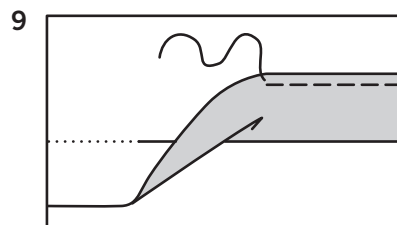
6. Cut a piece of elastic to fit waist, plus 1" (2.5cm). Insert elastic through opening in casing. Overlap ends and hold with safety pins.



7. Try on skirt and adjust to fit. Stitch ends of elastic together securely.

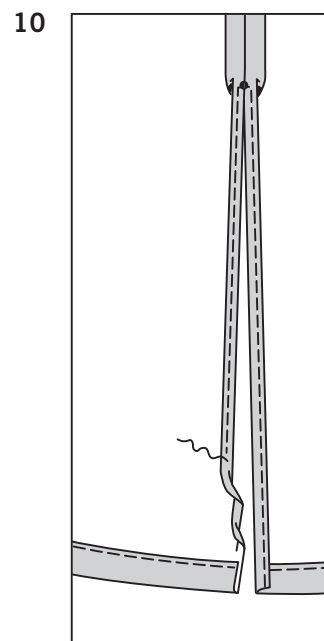


8. Slip-stitch opening edges of casing together.  
**TIP**-To secure elastic so it won't twist in wearing, stitch through all thicknesses of casing in the groove of each seam.



## HEM

9. Press up 1-1/4" (3.2cm) hem on lower edge of skirt. Stitch OR zig-zag 1/4" (6mm) from raw edge.



10. Press under 5/8" (1.5cm) on left side opening edges below dot. To form hem, tuck under raw edge to meet crease; press. Stitch hem close to inner pressed edge, squaring stitching even with dot.

## BLUSA A

1. Cosa el frente (1) al frente del canesú (2), casando las muescas simples y los puntos grandes. Planche la costura hacia el canesú.

2. Planche el dobladillo hacia arriba, sobre el borde inferior frontal. Cosa O haga puntada de zig-zag a 1/4" (6mm) del borde no terminado.

3. Cosa la espalda (3) a la parte trasera del canesú (4), casando las muescas dobles y los puntos grandes. Planche la costura hacia el canesú.

4. Planche el dobladillo hacia arriba, sobre el borde inferior de la espalda. Cosa O haga puntada de zig-zag a 1/4" (6mm) del borde no terminado.

5. Sujete con alfileres el frente a la espalda en las costuras laterales, casando los puntos grandes y los bordes doblados inferiores. Cosa.

6. Planche las costuras laterales abiertas. Para formar la jareta, cosa a 1/2" (1.3cm) sobre cada lado de la costura lateral por debajo del punto grande, retrocediendo la puntada en cada extremo para reforzar.

7. Corte cuatro pedazos de cinta de sarga o de cinta, cada una de 64" (61cm) de largo. Mantenga la blusa por el REVES. Inserte un alfiler a un extremo del cordón e insértelo en la abertura sobre el borde inferior de la blusa, teniendo extendido el borde superior a 1" (2.5cm), por debajo de los puntos grandes. Sujete con alfileres el cordón en su lugar, colocando los alfileres en el EXTERIOR.

8. En el EXTERIOR, cosa entre las puntadas de la jareta en el extremo de la jareta, agarrando el cordón; recorte el cordón hasta dentro de 1/2" (1.3cm) del punto grande.

9. Cosa el frente a la espalda por las costuras de los hombros.

10. Cosa la costura trasera central de la banda del escote (5). REVES CON REVES, doble la banda a la mitad y a lo largo. Planche. Sujete con alfileres.

11. En el EXTERIOR, sujete con alfileres la banda del escote al borde del escote, casando los centros, colocando los puntos pequeños en las costuras de los hombros y emparejando los bordes no terminados.

12. Cosa el borde del escote en una costura de 3/8" (1cm), estirando la banda para ajustarla. Cosa de nuevo a 1/4" (6mm) a distancia de la puntada previa, dentro del margen de la costura. Planche la costura hacia la blusa y la banda hacia afuera.

13. En el EXTERIOR, haga puntada recta o puntada de zig-zag a la blusa, cerca de la costura del escote.

14. Para fruncir la parte superior de la manga (6) entre las muescas, cosa a lo largo de la línea de la costura y a 1/4" (6mm), al INTERIOR de la línea de la costura, usando una puntada larga de la máquina de coser.

15. Cosa la costura de debajo del brazo de la manga.

16. Planche el dobladillo hacia arriba, sobre el borde inferior de la manga. Cosa O haga puntada de zig-zag a 1/4" (6mm), desde el borde no terminado y a 1/4" (6mm) por debajo de la puntada previa.

17. Voltee la manga al lado DERECHO. Sostenga la blusa al REVES con la sisa hacia usted. DERECHO CON DERECHO, sujete con alfileres la manga al bode de la sisa, con el punto pequeño central en la costura de los hombros, casando las costuras de debajo de los brazos, las muescas y los puntos pequeños restantes. Hale de las puntadas fruncidas para ajustarlas. Para distribuir uniformemente la amplitud, deslice la tela a lo largo de los hilos de la bobina. Hilvane. Cosa. Cosa de nuevo a 1/8" (3mm) desde la puntada previa. Recorte la costura por debajo de las muescas cerca de la puntada. Planche únicamente el margen de la costura.

18. Hale hacia arriba los bordes laterales de la blusa a lo largo del cordón, formando fruncidos. Pruébese la blusa. Ajuste los fruncidos y sujete los extremos en un moño. Si lo considera necesario, recorte los extremos del cordón en ángulo al largo deseado. Si lo prefiere, haga nudos en los extremos.

## FALDA B

### FRENTE Y PARTE TRASERA

1. Sujete con alfileres las secciones FRONTAL Y TRASERA (7), DERECHO CON DERECHO, casando los puntos. Cosa las costuras laterales, dejando libre el lado izquierdo por debajo del punto.

### JARETA

2. DERECHO CON DERECHO, cosa las secciones de la JARETA (8). Cosa las costuras laterales, dejando una abertura entre los puntos pequeños, como se muestra. Retroceda la puntada en los puntos pequeños para reforzar la costura. Planche las costuras abiertas.

3. REVES CON REVES, doble la jareta a la mitad y a lo largo, emparejando los bordes no terminados. Hilvane conjuntamente los bordes no terminados. El lado con la abertura es la parte de debajo de la jareta.

4. Con la parte de debajo de la jareta hacia usted, sujete con alfileres la jareta a la falda, casando las costuras centrales y las laterales. Cosa a lo largo de la línea de la costura, estirando la jareta para ajustarla. Cosa de nuevo a 1/4" (6mm) desde la puntada previa y dentro del margen de la costura. Recorte cerca de la puntada siguiente.

5. Planche la costura hacia la falda y la jareta hacia afuera.

6. Corte un pedazo de elástico para ajustar la cintura, adicionando 1" (2.5cm). Inserte el elástico a través de la jareta. Cruce los extremos y sosténgalos con un gancho de seguridad.

7. Pruébese la falda y ajústela a la medida. Cosa conjuntamente y de manera segura los extremos del elástico.

8. Haga puntada falsa conjunta a los bordes de la abertura de la jareta.  
**CONSEJO**- Para asegurarse que el elástico no se torcerá con el uso, cosa a través de todos los grosores de la jareta, en la ranura de cada costura.

### DOBLADILLO

9. Planche el dobladillo hacia arriba a 1-1/4" (3.2cm), sobre el borde inferior de la falda. Cosa O haga puntada de zig-zag a 1/4" (6mm) del borde no terminado.

10. Planche un dobléz de 5/8" (1.5cm), sobre el borde abierto lateral izquierda y por debajo del punto. Para formar el dobladillo, haga un dobléz al borde no terminado hasta el dobléz; planche. Cosa el dobladillo cerca del borde doblado interior, girando la puntada emparejada con el punto.