

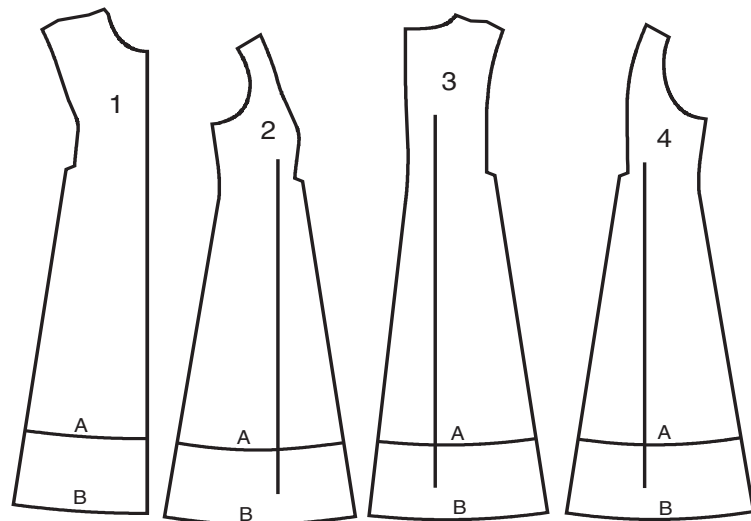
NEW LOOK® N6778

www.simplicity.com info@simplicity.com 1-888-588-2700

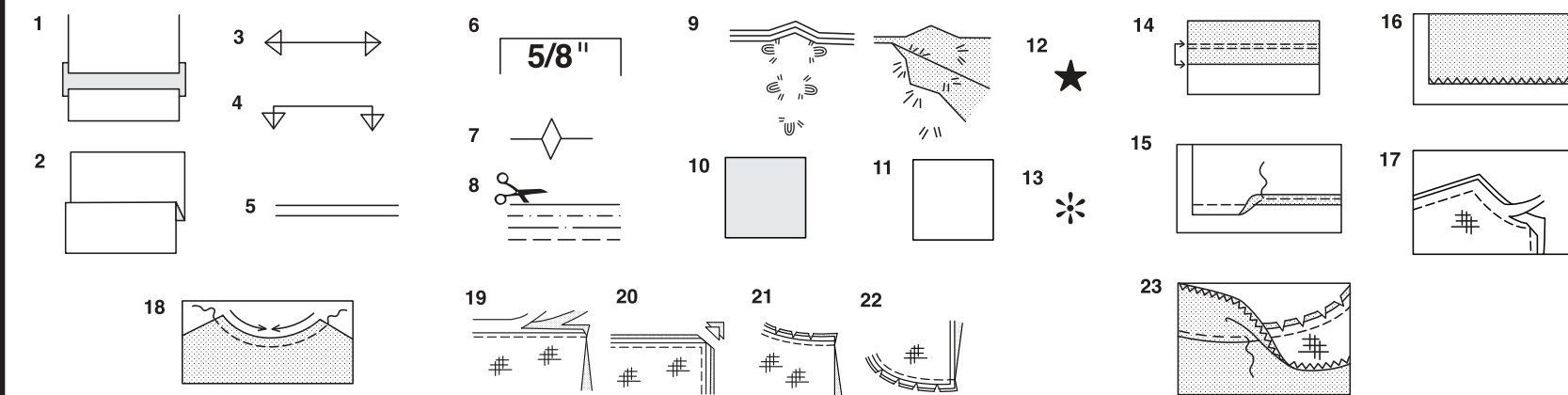
Thank you for purchasing this New Look pattern. We made every effort to provide you with a high quality product. Gracias por haber comprado este patrón de New Look. Hemos hecho todos los esfuerzos para ofrecerle un producto de alta calidad.



4 PIECES



1- FRONT
2- SIDE FRONT
3- BACK
4- SIDE BACK



How To Use Your Multi Size Pattern

First Prepare Your Pattern

Select the pattern pieces according to the view you are making.

This pattern is made to body measurements with ease allowed for comfort and style. If your body measurements differ from those on the pattern envelope adjust the pieces before placing them on the fabric.

Check your back neck to waist and dress length, if necessary, alter the pattern. Lengthening and shortening lines are indicated.

- TO LENGTHEN** : Cut pattern between printed lines and place paper underneath. Spread pattern the required amount and pin to paper.
- TO SHORTEN** : Fold at the printed lines to form a pleat half the amount to be shortened, ie 1/2" (1.3cm) deep to shorten 1" (2.5cm).

Study Your Pattern Markings

- STRAIGHT GRAIN** : Place an even distance from selvage or a straight thread.
- FOLD** : Place on fold of fabric.
- LENGTHENING AND SHORTENING LINES**.
- SEAM ALLOWANCE** : 5/8" (1.5cm) unless otherwise stated.
- NOTCHES** : Match notches.
- CUTTING LINES** : Multi patterns have different cutting lines for different sizes.
- TAILOR-TACKS** : With double thread make two loose stitches forming loop through fabric layers and pattern leaving long ends. Cut loop to remove pattern. Snip thread between fabric layers. Leave tufts.

Cutting Layouts

Cutting Directions

FOR FOLDED AND DOUBLE LAYER FABRIC - Place fabric with right side inside and pin pattern on wrong side of fabric.

FOR SINGLE LAYER - Pin pattern on right side of fabric. NOTE: Pattern pieces may interlock more closely for smaller sizes. Cut notches out from cutting line.

BEFORE removing pattern from fabric, transfer all pattern markings using tailor tacks or dressmaking tracing paper.

- KEY**: pattern printed side down
- KEY**: pattern printed side up
- KEY**: Cut out all pieces except pieces that extend beyond folded fabric, then open out fabric and on RIGHT side of fabric, cut in positions as shown.

KEY: For with and without nap layouts ensure fabric is placed with nap or design running in same direction.

Before pinning to fabric, press tissue pattern with a warm dry iron to remove creases.

Sewing Directions

Fabric Key	Right Side	Wrong Side	Interfacing	Lining

Sew garment following **Sewing Directions**.

PIN or machine-baste seams matching notches.

STITCH 5/8" (1.5cm) seams unless otherwise stated.

PRESS seams open unless otherwise indicated, clipping when necessary so seams will lie flat.

14. EASE-STITCH or **GATHER** - Loosen needle tension slightly. With RIGHT side up, stitch 5/8" (1.5cm) from cut edge using a long stitch. Stitch again 1/4" (6mm) away in the seam allowance.

EDGE FINISH - Neaten raw edges of seams, hems and facings using one of the following methods.

15. Stitch 1/4" (6mm) from edge, turn under along stitching and stitch.

16. Zig-zag or overlock raw edges.

17. INTERFACING — Pin interfacing to WRONG side of fabric. Cut across corners that will be enclosed with seams. Machine-baste 1/2" (1.3cm) from cut edge. (Shown only on first illustration). Trim interfacing close to machine-basting. For FUSIBLE interfacing, follow manufacturer's directions.

18. STAY-STITCH —Stitch 1/2" (1.3cm) from cut edge, in direction of arrows: (Shown only in the first illustration).

LAYERING — Trim seam allowance in layers.

19. Layer enclosed seams

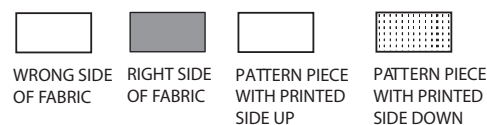
20. Trim corners

21. Clip inner curves

22. Notch outer curves

23. UNDERSTITCH —Press facing away from garment; press seam toward facing. Facing side up, understitch close to seam through facing and seam allowances.

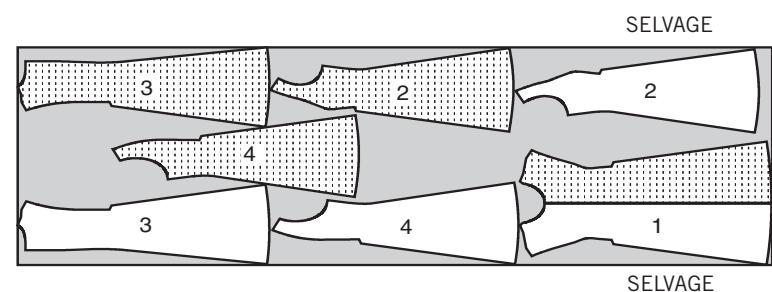
Cutting Layouts



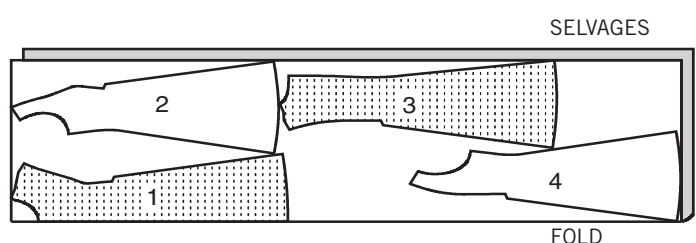
DRESS A

USE PIECES 1 2 3 4

1A 45" (115CM)
WITH NAP
ALL SIZES



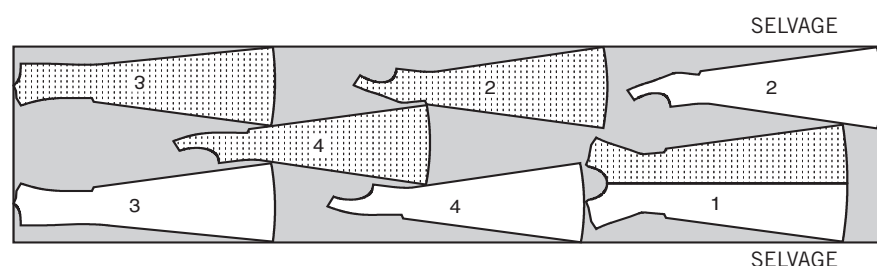
1B 60" (150CM)
WITH NAP
ALL SIZES



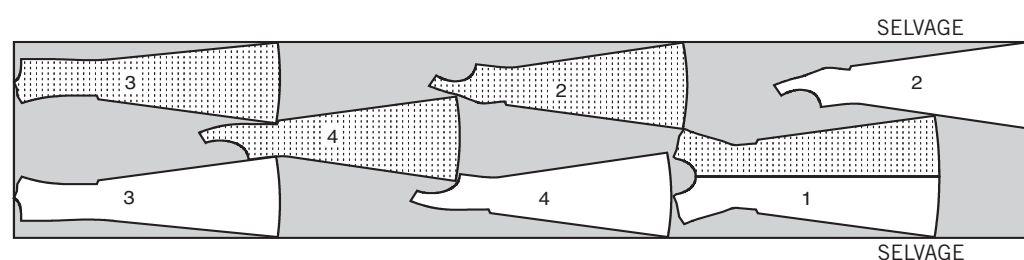
DRESS B

USE PIECES 1 2 3 4

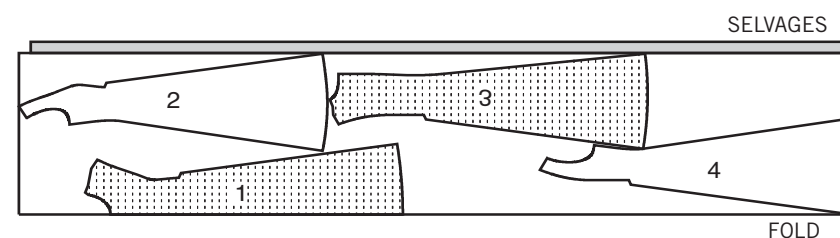
2A 45" (115CM)
WITH NAP
SIZES 6 8 10 12 14 16



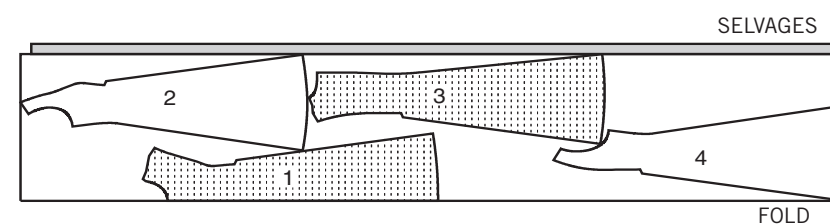
2B 45" (115CM)
WITH NAP
SIZES 18 20 22



2C 60" (150CM)
WITH NAP
SIZES 6 8 10 12 14



2D 60" (150CM)
WITH NAP
SIZES 16 18 20 22



Español

VESTIDO A

USE LAS PIEZAS 1 2 3 4

1A 45" (115CM) CON PELUSA
TODAS LAS TALLAS

1B 60" (150CM) CON PELUSA
TODAS LAS TALLAS

VESTIDO B

USE LAS PIEZAS 1 2 3 4

2A 45" (115CM) CON PELUSA
TALLAS 6 8 10 12 14 16

2B 45" (115CM) CON PELUSA
TALLAS 18 20 22

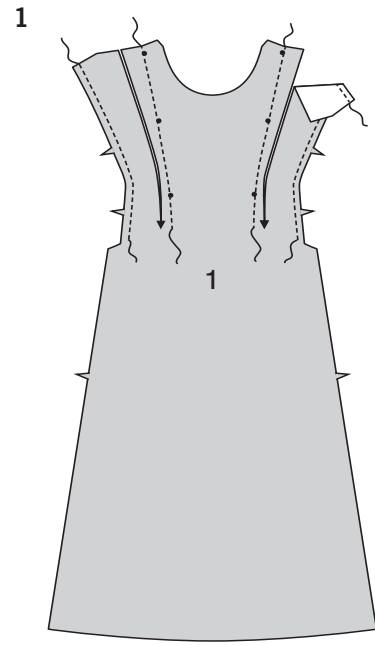
2C 60" (150CM) CON PELUSA
TALLAS 6 8 10 12 14

2D 60" (150CM) CON PELUSA
TALLAS 16 18 20 22

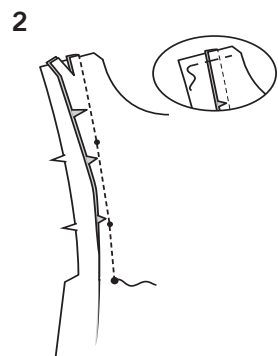
SELVAGES= ORILLAS
FOLD= DOBLEZ

DRESS A, B

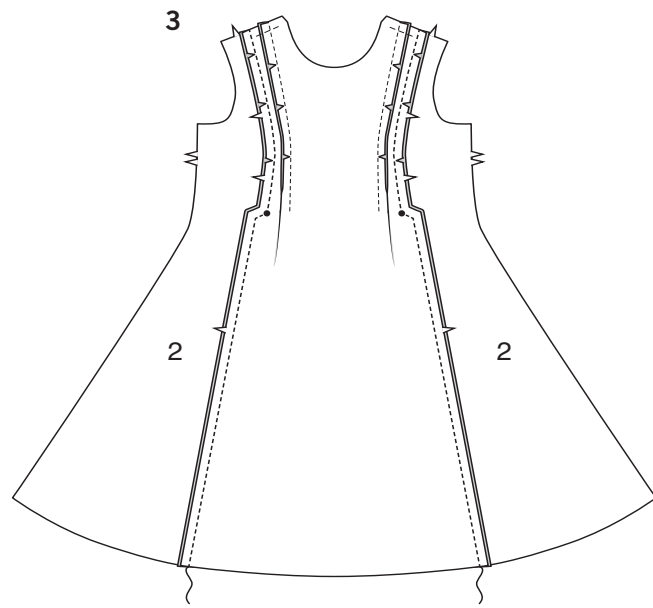
NOTE: Illustrated in shorter length unless otherwise indicated.



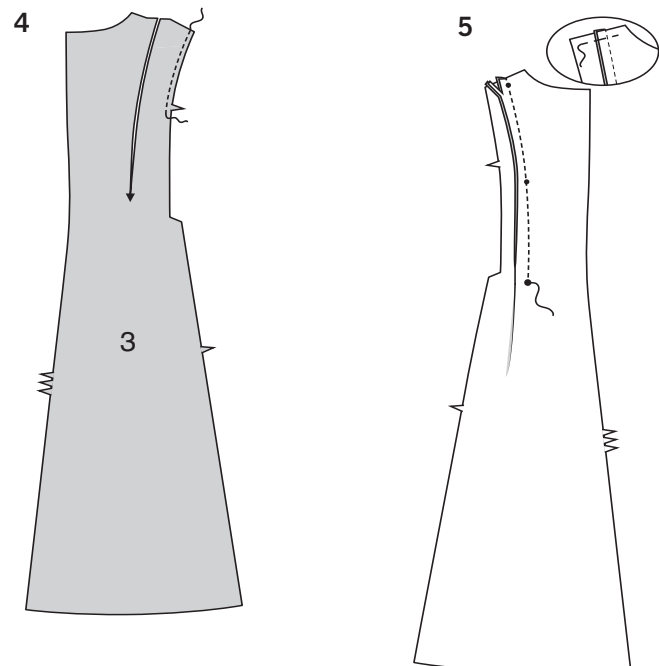
1. STAYSTITCH FRONT (1) along inner stitching line and side edges, as shown. Slash to triangles along lines indicated on Pattern Tissue.



2. To make pleats in front, on inside, pin stitching lines together, matching circles, clipping where necessary. Stitch along stitching line, ending at large circles. Trim to 1/2" (1.3cm). Press toward side. Baste across upper edge.

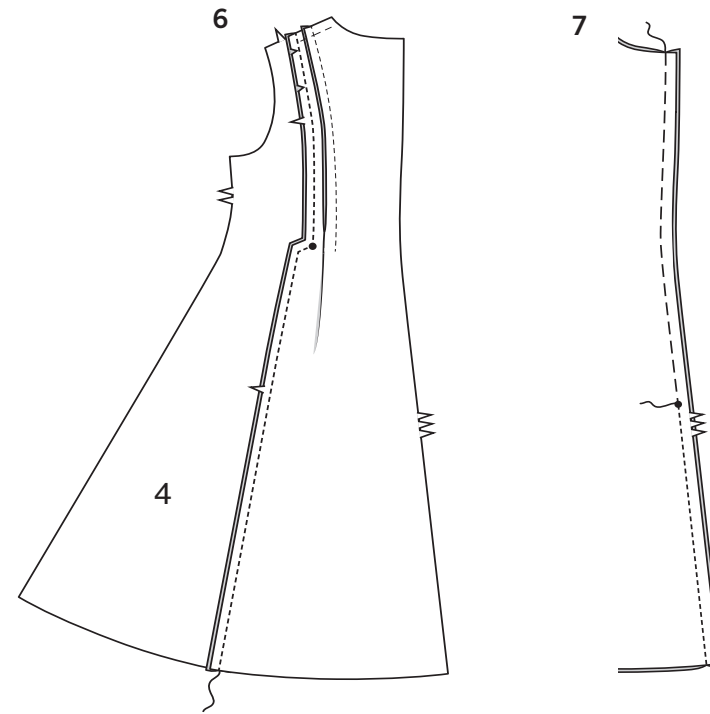


3. Pin SIDE FRONT (2) to front, clipping front where necessary. Stitch, pivoting as shown. Press toward side.



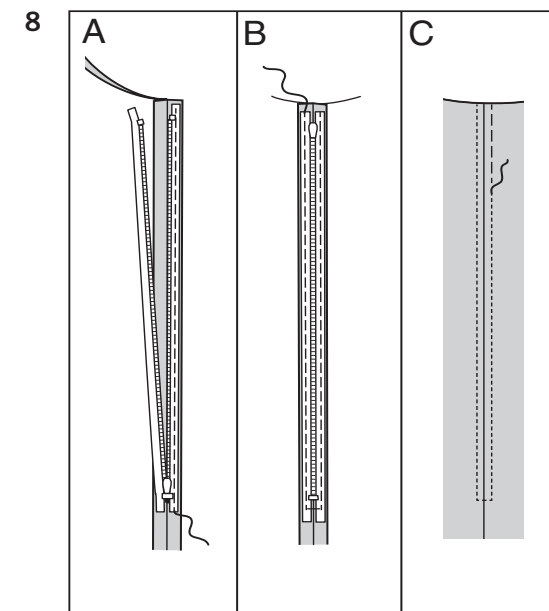
4. STAYSTITCH BACK (3) along side edges, as shown. Slash to triangle along line indicated on Pattern Tissue.

5. To make pleats, on inside pin stitching lines together, matching circles. Stitch along stitching line, ending at large circles. Trim to 1/2" (1.3cm), press toward side. Baste across upper edge.

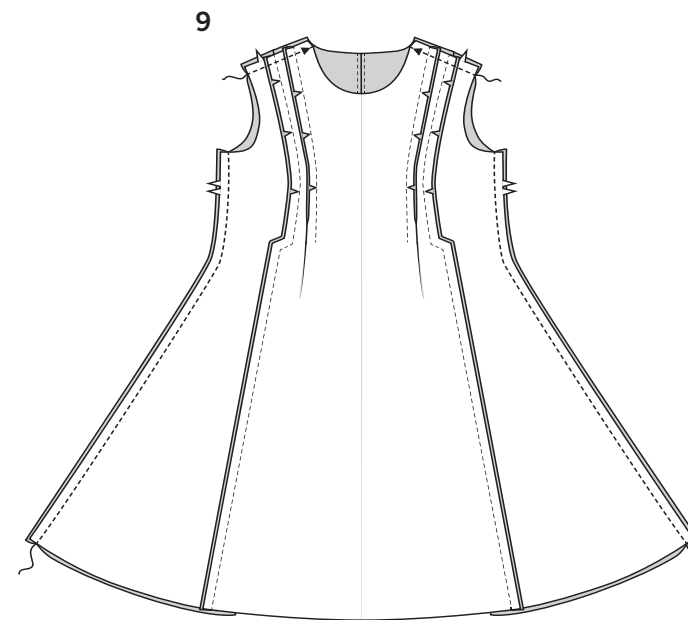


6. Pin SIDE BACK (4) to back, clipping back where necessary. Stitch, pivoting as shown. Press toward side.

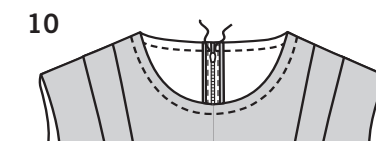
7. Stitch back sections together at center back, leaving open above large circle. Baste center back edges together above circle.



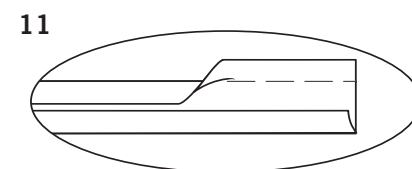
8. (A) Open zipper; place face down on extended seam allowance, placing zipper stop at large circle and zipper teeth on seamline. Baste in center of zipper tape, keeping garment free. (B) Close zipper; turn pull tab up. Spread garment flat. Baste a scant 1/4" (6mm) from zipper teeth and across lower edge. (C) On outside, stitch along basting through all thicknesses, as shown, using a zipper foot. Remove basting.



9. Stitch front to back at shoulders and sides.

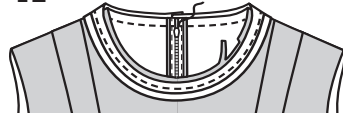


10. STAYSTITCH neck edge of dress.



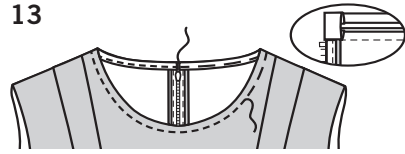
11. Open out one folded edge of bias tape, press lightly.

12



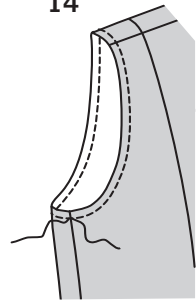
12. Pin bias tape to neck edge, placing crease along seamline, extending ends 3/8" (1cm) past zipper. Stitch along crease. Trim neck seam allowance even with bias tape.

13



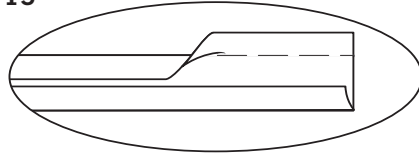
13. Turn bias tape to inside along seam, turning in ends. Press. Baste in place. **SLIPSTITCH** ends. Stitch along basting.

14



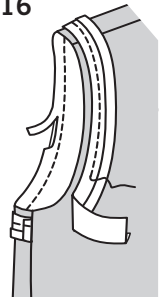
14. **STAYSTITCH** armhole.

15



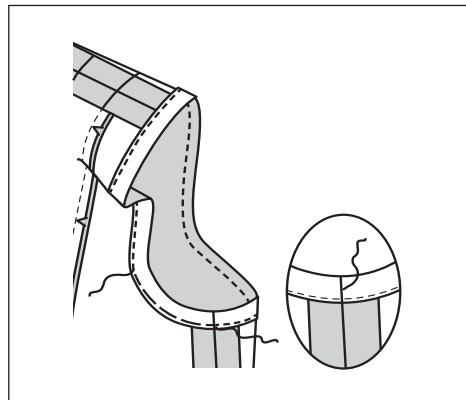
15. Open out one folded edge of bias tape, press lightly.

16



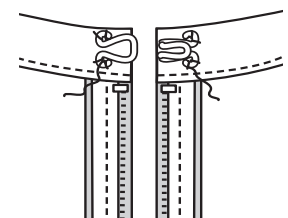
16. Pin bias tape to armhole edge, placing crease along seamline, turning in ends to meet at left underarm seam, as shown. Stitch along crease. Trim seam allowance even with bias tape.

17



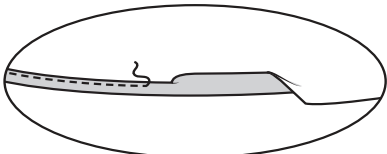
17. Turn bias tape to inside along seam. Press. **SLIPSTITCH** ends. Baste in place. Stitch along basting.

18



18. Sew hook and eye to upper edge of back.

19



19. Make 5/8" (1.5cm) **NARROW HEM** at lower edge of dress, easing in fullness if necessary.

VESTIDOS A, B

NOTA. Ilustrado en una corta extensión, a menos que se diga lo contrario.

- HAGA PUNTADA DE SOSTEN** al FRENTE (1), a lo largo de los bordes de la línea de la puntada interior y lateral, tal como se muestra. Haga cortes hasta los triángulos, a lo largo de las líneas indicadas en el patrón.
- Para hacer los pliegues en el frente, por el interior, sujete con alfileres conjuntamente las líneas de la puntada, casando los círculos, cortando donde sea necesario. Cosa a lo largo de la línea de la puntada, terminando en los círculos grandes. Recorte a 1/2" (1.3cm). Planche hacia el lado. Hilvane a través del borde superior.
- Sujete con alfileres el FRENTE LATERAL (2) al frente, haciendo cortes al frente donde se considere necesario. Cosa, girando como se muestra. Planche hacia el lado.
- HAGA PUNTADA DE SOSTEN** a la espalda (3), a lo largo de los bordes laterales, como se muestra. Haga cortes hasta el triángulo, a lo largo de la línea indicada en el patrón.
- Para hacer los pliegues, en el interior, sujete con alfileres conjuntamente la línea de la puntada, casando los círculos. Cosa a lo largo de la línea de la puntada, terminando en los círculos grandes. Recorte a 1/2" (1.3cm), planchando hacia el lado. Hilvane a través del borde superior.
- Sujete con alfileres la ESPALDA LATERAL (4) a la espalda, haciendo cortes a la espalda donde se considere necesario. Cosa, girando como se muestra. Planche hacia el lado.
- Cosa conjuntamente las secciones de la espalda, a la espalda central, dejando abierto por encima del círculo grande. Hilvane conjuntamente los bordes traseros centrales, por encima del círculo.
- (A) Abra la cremallera, colóquela cara abajo sobre el margen de la costura extendida, colocando el stop de la cremallera en el círculo grande y los dientes de la cremallera sobre la línea de la costura. Hilvane en el centro de la cinta de la cremallera, manteniendo libre la prenda.
(B) Cierre la cremallera; voltee la jaladera hacia arriba. Extienda plana la prenda. Hilvane a escasos 1/4" (6mm) de los dientes de la cremallera y a través del borde inferior.
(C) Por el exterior, cosa a lo largo del hilvanado y a través de todos los grosores, como se muestra, usando un pie para cremallera. Retire el hilvanado.
- Cosa el frente a la espalda, por las costuras de los hombros y las laterales.
- HAGA PUNTADA DE SOSTEN** al borde del escote de la prenda.

11. Abra un borde doblado de la cinta de bias y plánelo ligeramente.

12. Sujete con alfileres la cinta de bias al borde del escote, colocando el doblé a lo largo de la línea de la costura.

13. Voltee la cinta de bias al interior a lo largo de la costura, volteando en los extremos. Planche e hilvane en su lugar. **HAGA PUNTADA FALSA** a los extremos. Cosa a lo largo del hilvanado.

14. **HAGA PUNTADA DE SOSTEN** a la sisa.

15. Abra un borde doblado de la cinta de bias, planche ligeramente.

16. Sujete con alfileres la cinta de bias al borde de la sisa, colocando el doblé a lo largo de la línea de la costura, volteando en los extremos hasta unirse en la costura de la sisa izquierda, como se muestra. Cosa a lo largo del doblé. Recorte el margen de la costura, emparejado con la cinta de bias.

17. Voltee la cinta de bias al interior y a lo largo de la costura. Planche. **HAGA PUNTADA FALSA** a los extremos. Hilvane en su lugar. Cosa a lo largo del hilvanado.

18. Cosa los broches de presión al borde superior de la espalda.

19. **HAGA UN DOBLADILLO ANGOSTO** de 5/8" (1.5cm), en el borde inferior del vestido, frunciendo la totalidad si así lo considera necesario.