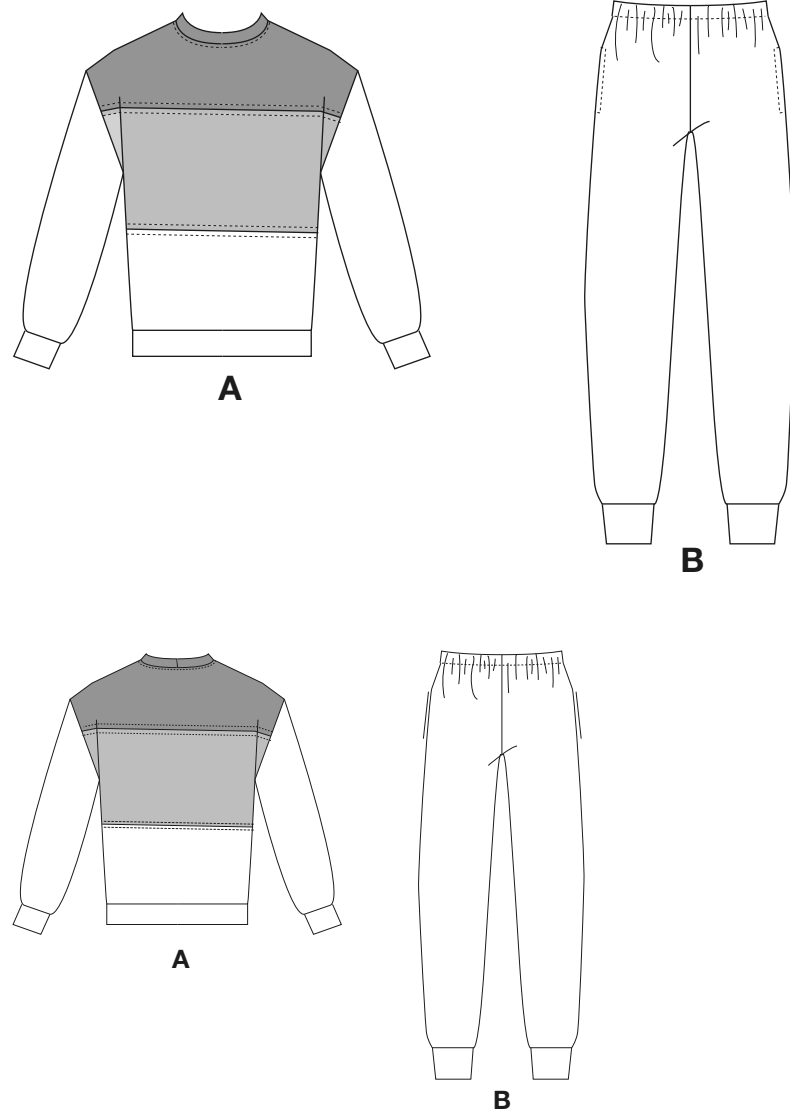


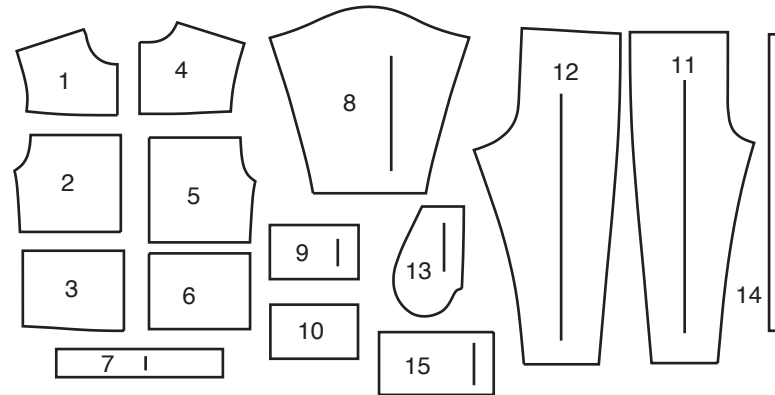
# NEW LOOK® N6772

www.simplicity.com info@simplicity.com 1-888-588-2700

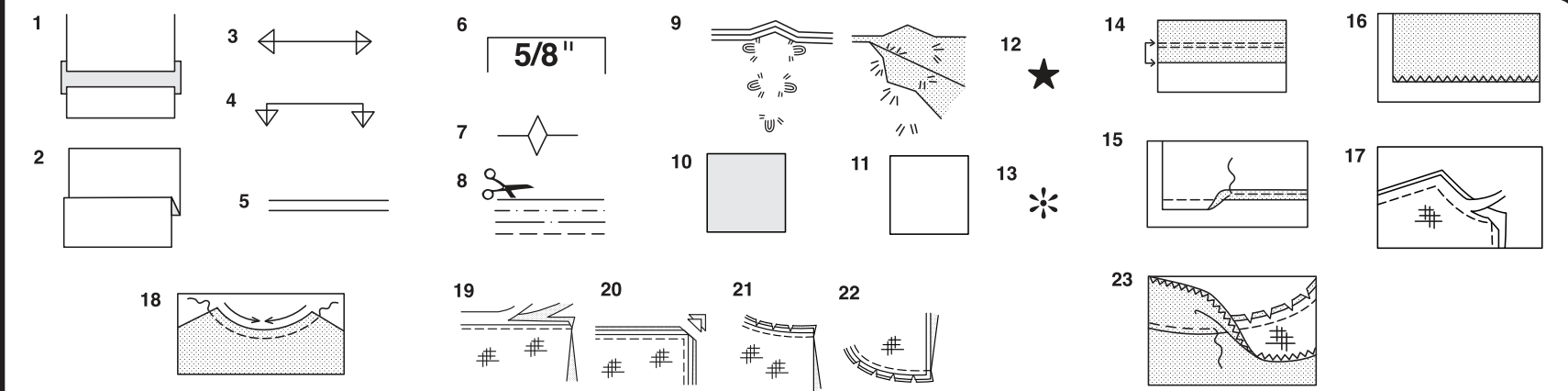
Thank you for purchasing this New Look pattern. We made every effort to provide you with a high quality product. Gracias por haber comprado este patrón de New Look. Hemos hecho todos los esfuerzos para ofrecerle un producto de alta calidad.



15 PIECES



- 1 UPPER FRONT A
- 2 MIDDLE FRONT A
- 3 LOWER FRONT A
- 4 UPPER BACK A
- 5 MIDDLE BACK A
- 6 LOWER BACK A
- 7 NECK BAND A
- 8 SLEEVE A
- 9 SLEEVE BAND A
- 10 LOWER BAND A
- 11 FRONT B
- 12 BACK B
- 13 POCKET B
- 14 GUIDE FOR ELASTIC B
- 15 LEG BAND B



### How To Use Your Multi Size Pattern

#### First Prepare Your Pattern

Select the pattern pieces according to the view you are making.

This pattern is made to body measurements with ease allowed for comfort and style. If your body measurements differ from those on the pattern envelope adjust the pieces before placing them on the fabric.

Check your back neck to waist and dress length, if necessary, alter the pattern. Lengthening and shortening lines are indicated.

1. **TO LENGTHEN** : Cut pattern between printed lines and place paper underneath. Spread pattern the required amount and pin to paper.
2. **TO SHORTEN** : Fold at the printed lines to form a pleat half the amount to be shortened, ie 1/2" (1.3cm) deep to shorten 1" (2.5cm).

#### Study Your Pattern Markings

3. **STRAIGHT GRAIN** : Place an even distance from selvage or a straight thread.
4. **FOLD** : Place on fold of fabric.
5. **LENGTHENING AND SHORTENING LINES**.
6. **SEAM ALLOWANCE** : 5/8" (1.5cm) unless otherwise stated.
7. **NOTCHES** : Match notches.
8. **CUTTING LINES** : Multi patterns have different cutting lines for different sizes.
9. **TAILOR-TACKS** : With double thread make two loose stitches forming loop through fabric layers and pattern leaving long ends. Cut loop to remove pattern. Snip thread between fabric layers. Leave tufts.

### Cutting Layouts

#### Cutting Directions

FOR FOLDED AND DOUBLE LAYER FABRIC - Place fabric with right side inside and pin pattern on wrong side of fabric.

FOR SINGLE LAYER - Pin pattern on right side of fabric. NOTE: Pattern pieces may interlock more closely for smaller sizes. Cut notches out from cutting line.

BEFORE removing pattern from fabric, transfer all pattern markings using tailor tacks or dressmaking tracing paper.

10. **KEY**: pattern printed side down
11. **KEY**: pattern printed side up
12. **KEY**: Cut out all pieces except pieces that extend beyond folded fabric, then open out fabric and on RIGHT side of fabric, cut in positions as shown.
13. **KEY**: For with and without nap layouts ensure fabric is placed with nap or design running in same direction.

Before pinning to fabric, press tissue pattern with a warm dry iron to remove creases.

#### Sewing Directions

Fabric Key	Right Side	Wrong Side	Interfacing	Lining

Sew garment following **Sewing Directions**.

**PIN** or machine-baste seams matching notches.

**STITCH** 5/8" (1.5cm) seams unless otherwise stated.

**PRESS** seams open unless otherwise indicated, clipping when necessary so seams will lie flat.

14. **EASE-STITCH** or **GATHER** - Loosen needle tension slightly. With RIGHT side up, stitch 5/8" (1.5cm) from cut edge using a long stitch. Stitch again 1/4" (6mm) away in the seam allowance.

**EDGE FINISH** - Neaten raw edges of seams, hems and facings using one of the following methods.

15. Stitch 1/4" (6mm) from edge, turn under along stitching and stitch.
16. Zig-zag or overlock raw edges.

17. **INTERFACING** — Pin interfacing to WRONG side of fabric. Cut across corners that will be enclosed with seams. Machine-baste 1/2" (1.3cm) from cut edge. (Shown only on first illustration). Trim interfacing close to machine-basting. For FUSIBLE interfacing, follow manufacturer's directions.

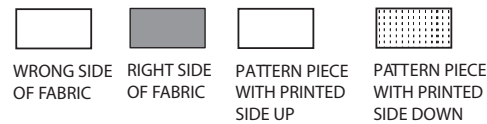
18. **STAY-STITCH** —Stitch 1/2" (1.3cm) from cut edge, in direction of arrows: (Shown only in the first illustration).

**LAYERING** — Trim seam allowance in layers.

19. Layer enclosed seams
20. Trim corners
21. Clip inner curves
22. Notch outer curves

23. **UNDERSTITCH** —Press facing away from garment; press seam toward facing. Facing side up, understitch close to seam through facing and seam allowances.

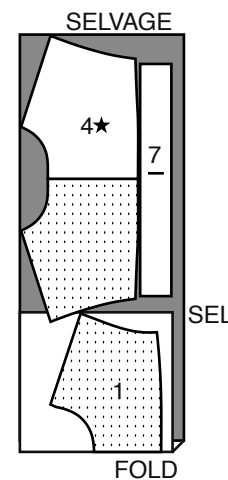
## Cutting Layouts



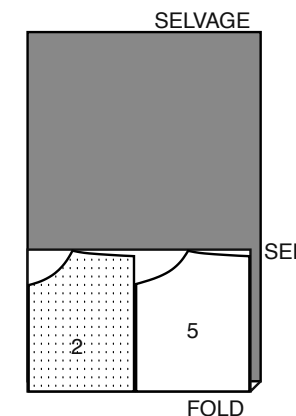
### CONTRAST 1A (UPPER FRONT, BACK, NECK BAND)

USE PIECES 1 4 7

2 60" (150CM) WITH NAP ALL SIZES



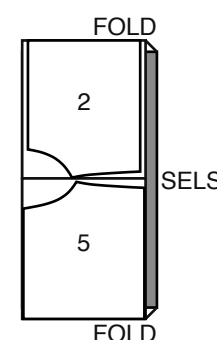
3B 60" (150CM) WITH NAP SIZES XXL XXXL



### CONTRAST 2A (MIDDLE FRONT, BACK)

USE PIECES 2 5

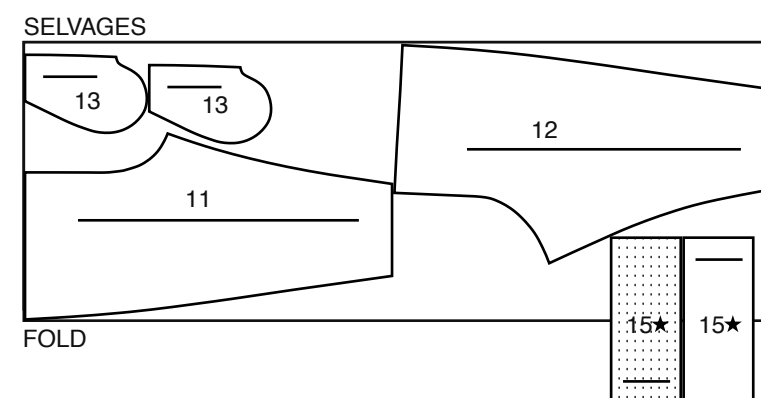
3A 60" (150CM) WITH NAP SIZES S M L XL



### PANTS B

USE PIECES 11 12 13 15

4 60" (150CM) WITH NAP ALL SIZES



## Español

### BLUSA A

USE LAS PIEZAS 3 6 8 9 10

1 60" (150CM) CON PELUSA TODAS LAS TALLAS

### CONTRASTE 1A (FRENTE SUPERIOR, ESPALDA, BANDA DE EL ESCOTE)

USE LAS PIEZAS 1 4 7  
2 60" (150CM) CON PELUSA TODAS LAS TALLAS

### CONTRASTE 2A (FRENDE MEDIO, ESPALDA)

USE LAS PIEZAS 2 5  
3A 60" (150CM) CON PELUSA TALLAS P M G XG

3B 60" (150CM) CON PELUSA TALLAS XXG XXXG

### PANTALONES B

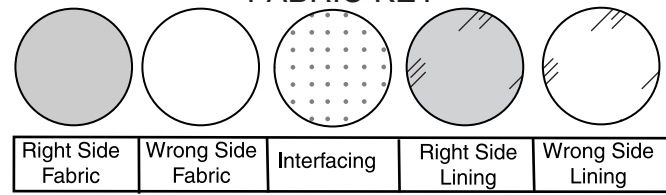
USE LAS PIEZAS 11 12 13 15

4 60" (150CM) CON PELUSA TODAS LAS TALLAS

SELVAGE(S)= ORILLAS  
FOLD=DOBLEZ  
SEL. ORILLA

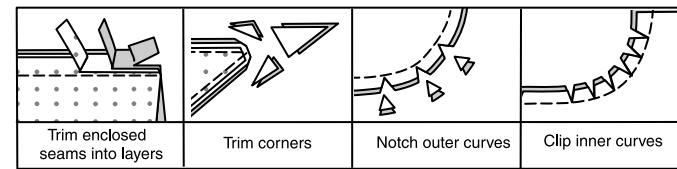
**SEWING INFORMATION**

**FABRIC KEY**



**SEAM ALLOWANCES**

Use 5/8" (1.5cm) seam allowances unless otherwise indicated.



**PIN AND FIT**

Pin or baste seams, **RIGHT SIDE TOGETHER**, matching notches. Fit garment before stitching major seams.

**PRESS**

Press seam allowances flat; then open unless otherwise stated. Clip where necessary so they lie flat.

**GLOSSARY**

Sewing terms appearing in **BOLD TYPE** in Sewing Instructions are explained below.

**STAYSTITCH** - Stitch 1/8" (3mm) from seamline in seam allowance (usually 1/2" (13mm) from raw edge).

**TOPSTITCH** - On outside, stitch 1/4" (6mm) from edge, seam or previous stitching, using presser foot as guide, or stitch where indicated in instructions.

**SEWING DIRECTIONS**

**TOP A, B**

**NOTE:** Stretch fabric slightly in front and back of needle while stitching.

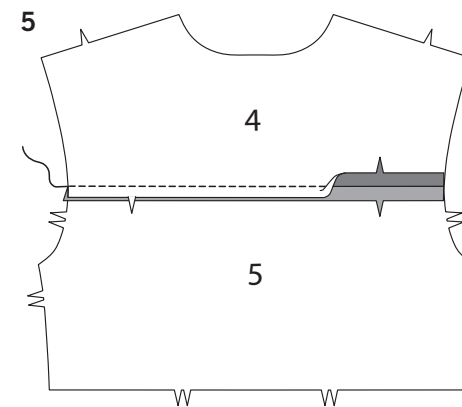
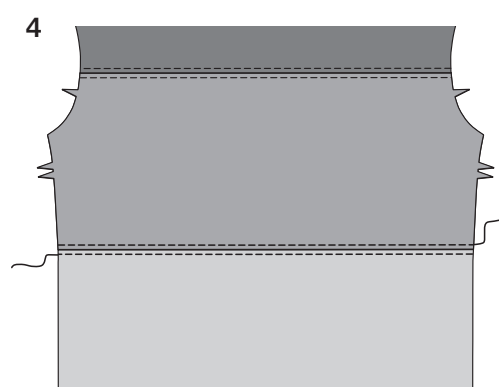
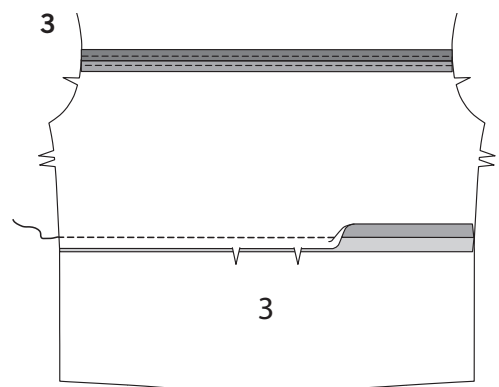
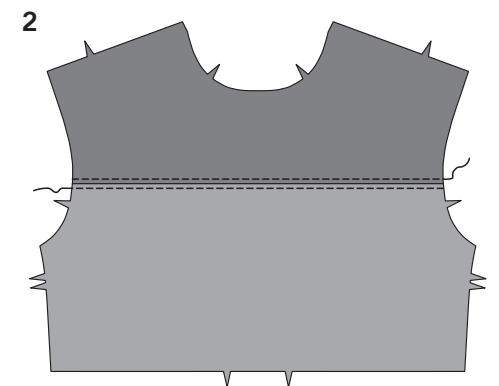
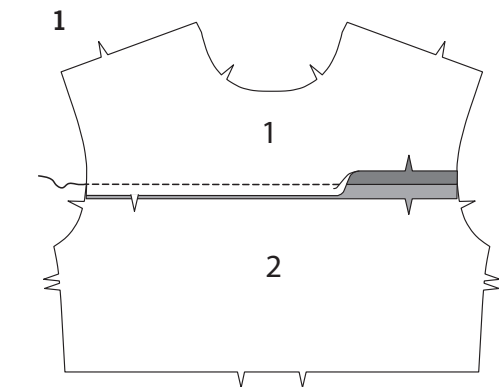
**FRONT AND BACK**

**1.** Pin upper front (1) to upper edge of middle front (2); stitch.

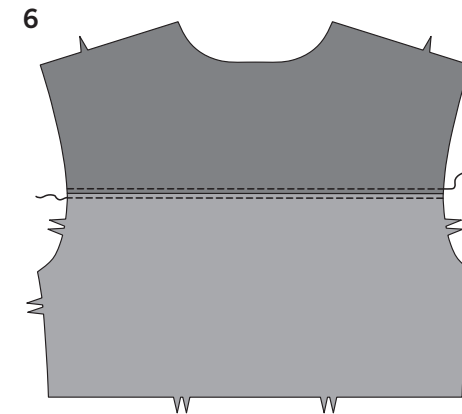
**2.** **TOPSTITCH** each side of seam, as shown.

**3.** Pin lower front (3) to middle front, matching centers. Stitch.

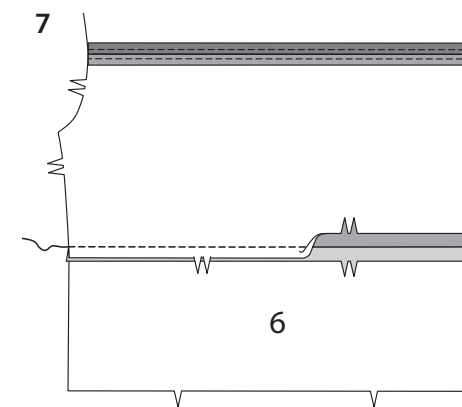
**4.** **TOPSTITCH** each side of seam, as shown.



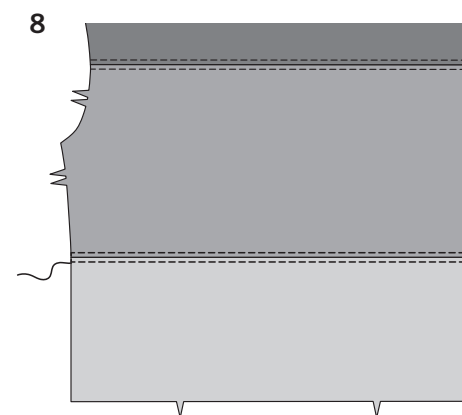
**5.** Pin upper back (4) to upper edge of middle back (5); stitch.



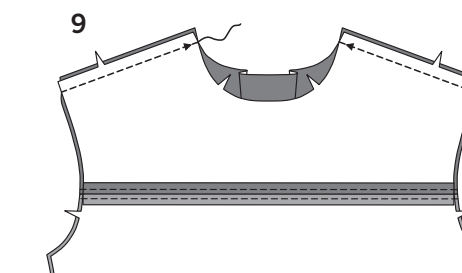
**6.** **TOPSTITCH** each side of seam.



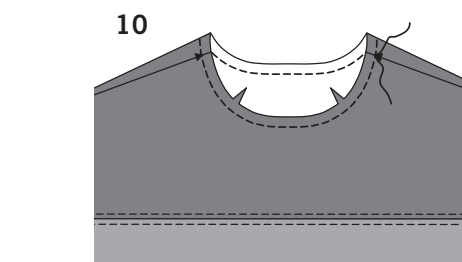
**7.** Pin lower back (6) to middle back, matching centers. Stitch.



**8.** **TOPSTITCH** each side of seam.

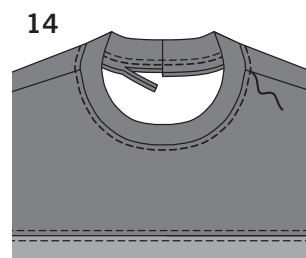
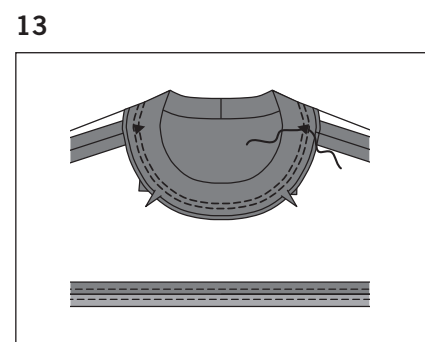
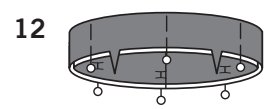
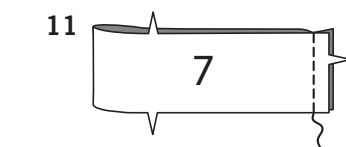


**9.** Stitch back to front at shoulders.



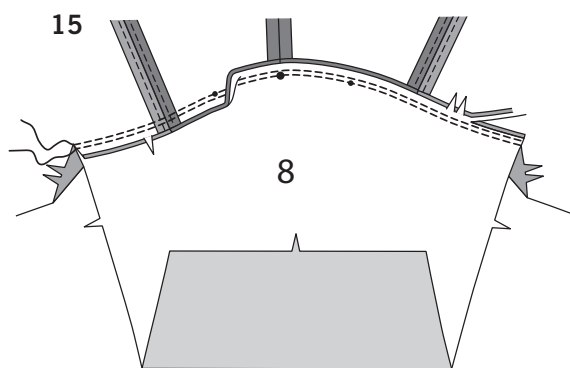
**NECK BAND**

**10.** **STAYSTITCH** neck edge of top.

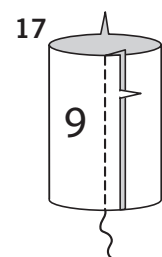
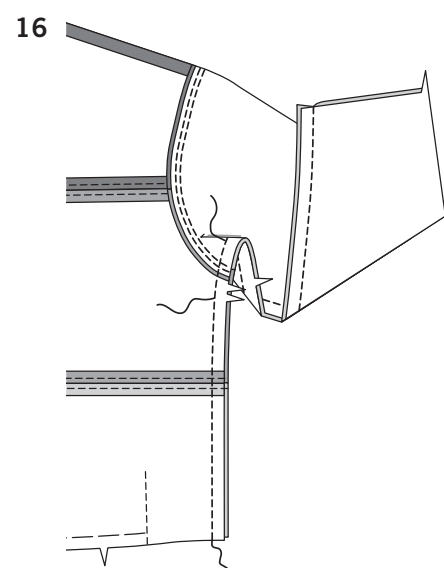


11. Stitch ends of neck band (7) together.
12. With wrong sides together, fold neck band along foldline. Pin raw edges together.
13. Pin neck band to neck edge, matching centers, clipping top neck edge as necessary. Stitch, stretching neck band to fit. Stitch again 1/4"(6mm) away within seam allowance. Press seam down.
14. **TOPSTITCH** neck edge of top. If desired, trim seam close to topstitching.

**SLEEVE AND BANDS**

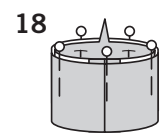


15. With right sides together, pin sleeve (8) to armhole edge, placing large circle at shoulder seam; baste. Stitch. Stitch again 1/4"(6mm) away in seam allowance. Trim close to stitching. Press seam toward top.

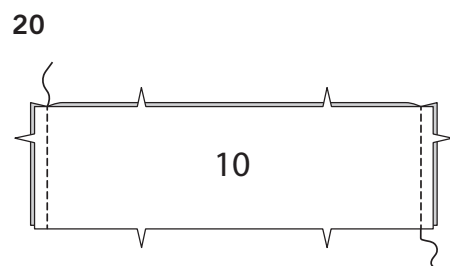
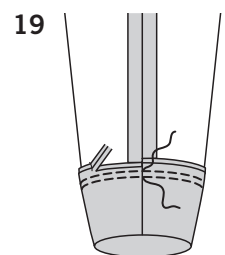


16. Pin front to back at sides; pin sleeve edges together. Stitch in one continuous seam. Stitch underarm edge again along previous stitching.

17. Stitch ends of sleeve band (9) together.

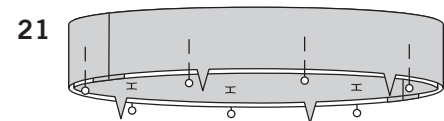


18. With wrong sides together, fold sleeve band along foldline. Pin raw edges together.

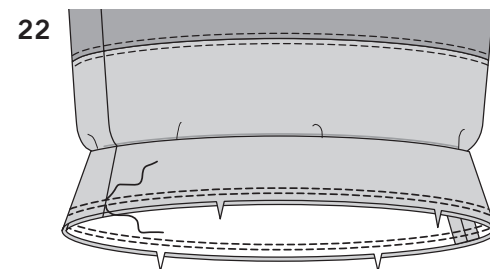


19. Pin sleeve band to sleeve, matching seams. Stitch, stretching band to fit. Stitch again 1/4"(6mm) away in seam allowance. Trim close to stitching. Press seam up.

20. Stitch lower band (10) sections together at sides.



21. With wrong sides together, fold lower band along foldline. Pin raw edges together.



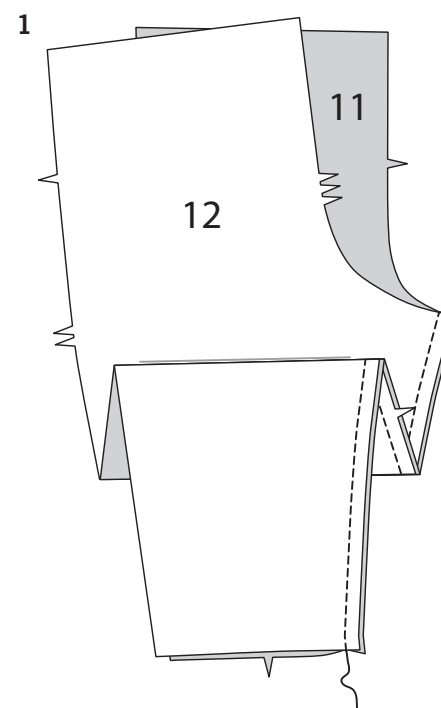
22. Pin band to lower edge of top, matching seams. Stitch, stretching band to fit. Stitch again 1/4"(6mm) away in seam allowance. Trim close to stitching. Press seam up.

**PANTS B**

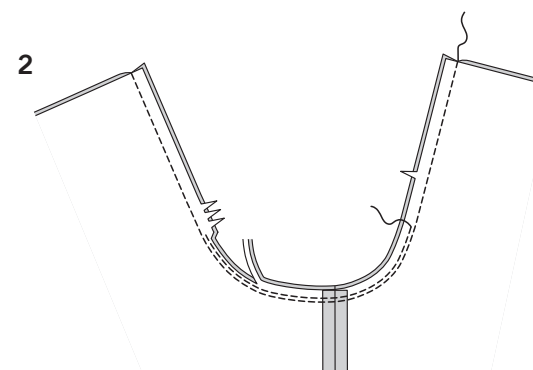
*NOTE: Stretch fabric slightly in front and back of needle while stitching.*

**FRONT AND BACK**

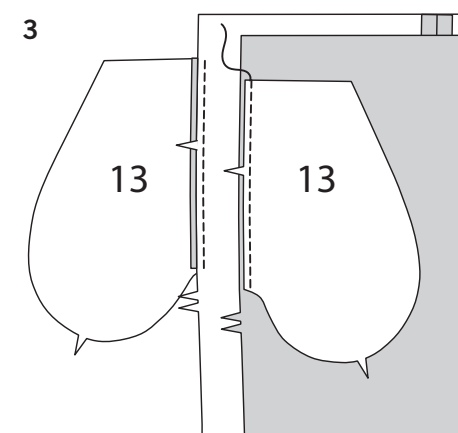
1. Stitch front (11) to back (12) at inner leg edge, stretching back to fit between notch and upper edge.



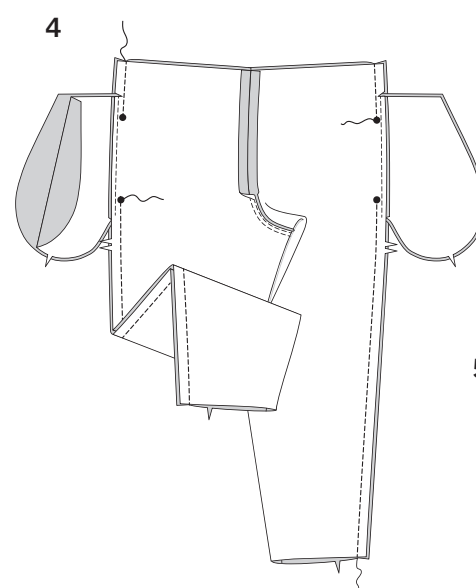
2. Stitch crotch seam. Stitch again 1/4"(6mm) away in seam allowance along curve, as shown. Trim close to second stitching.



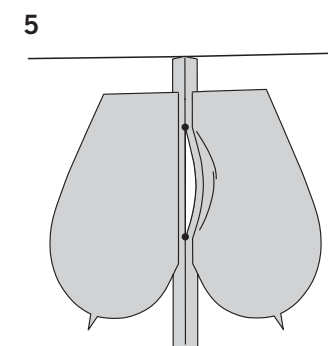
3. Stitch one pocket (13) section to front and back at each side in 1/4"(6mm) seam. Press seams toward pockets.



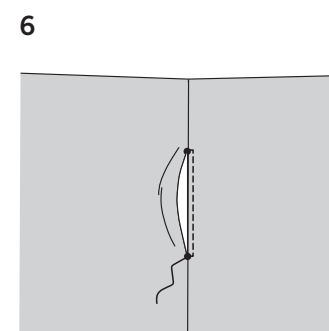
4. Stitch front and back together at sides, leaving open between large circles.

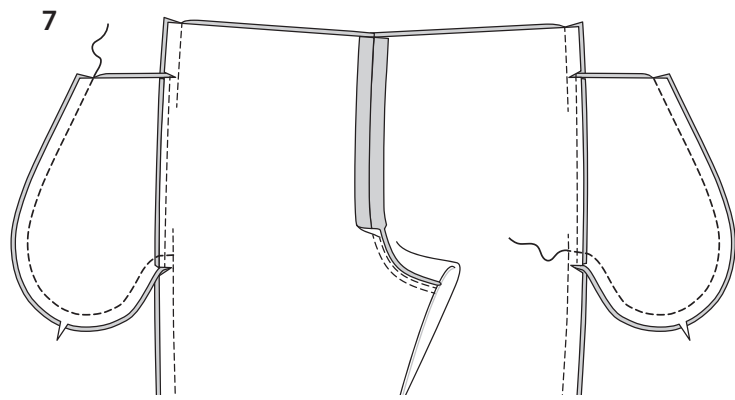


5. Turn front pocket toward front along seamlines; press.

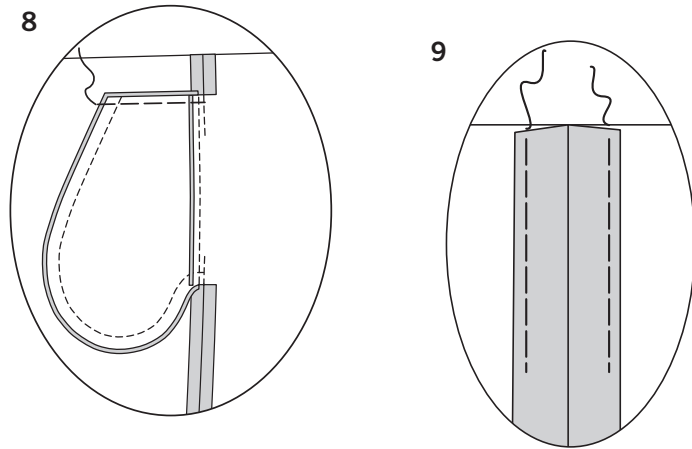


6. **TOPSTITCH** front pocket opening edge, pivoting to large circles, keeping back pocket free.





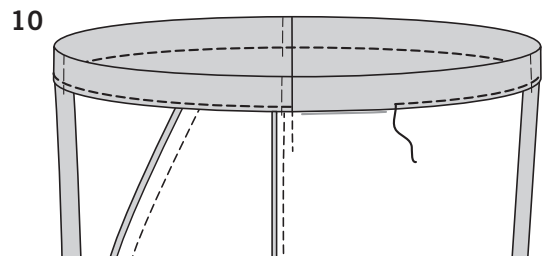
7. Stitch pocket edges together to side seams. Clip back seam allowances above and below pockets.



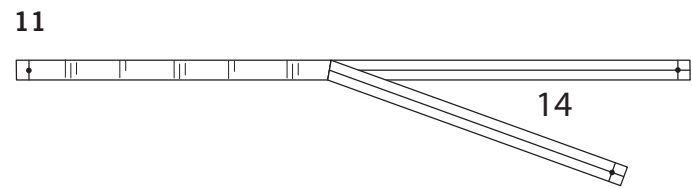
8. Turn pockets toward front along seamlines; press. Baste upper edge in place.

### FINISHING

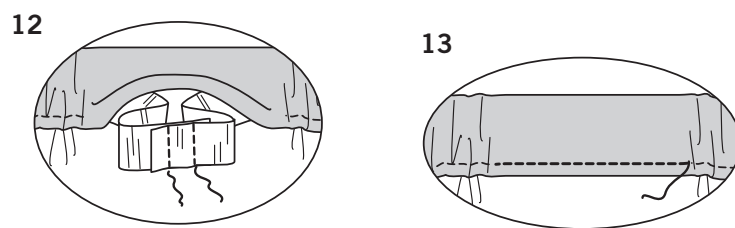
9. For easier insertion of elastic, baste about 3"(7.5cm) of seam in place at casing area.



10. To form casing for elastic, turn upper edge of pants to inside along foldline; press. Stitch 1/4"(6mm) from raw edge, leaving an opening, as shown.

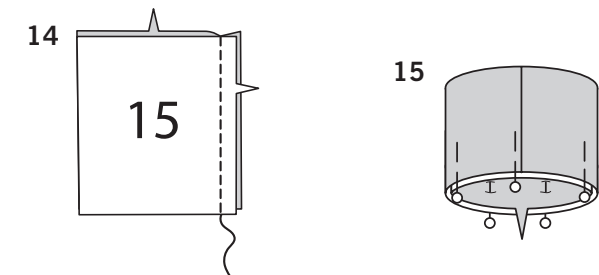


11. Cut elastic the length of guide for elastic (14).

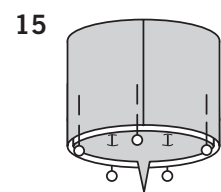


12. Insert elastic through opening. Lap ends; hold with safety pins. Try on; adjust if necessary. Stitch ends of elastic securely.

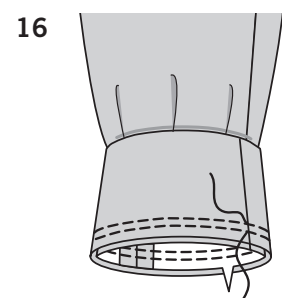
13. Stitch opening in casing, stretching elastic while stitching.



14. Stitch ends of leg band (15) together.



15. With wrong sides together, fold leg band along foldline. Pin raw edges together.



16. Pin band to lower edge of pants, matching seams at inner leg. Stitch, stretching band to fit. Stitch again 1/4"(6mm) away in seam allowance. Trim close to stitching. Press seam up.

## BLUSA A

**NOTA:** Estirar ligeramente la tela delante y detrás de la aguja al coser.

### FRENTE Y ESPALDA

- Prender con alfileres el frente superior (1) al borde superior del frente medio (2); coser.
- Hacer un **PESPUNTE DE ADORNO** en cada costado de la costura, como se indica.
- Prender con alfileres el frente inferior (3) al frente medio, coincidiendo los centros. Coser.
- Hacer un **PESPUNTE DE ADORNO** en cada costado de la costura, como se indica.
- Prender con alfileres la espalda superior (4) al borde superior de la espalda media (5); coser.
- Hacer un **PESPUNTE DE ADORNO** en cada costado de la costura.
- Prender con alfileres la espalda inferior (6) a la espalda media, coincidiendo los centros. Coser.
- Hacer un **PESPUNTE DE ADORNO** en cada costado de la costura.
- Coser la espalda al frente por los hombros.

### BANDA DEL ESCOTE Y CAPUCHA

- Hacer un **PESPUNTE DE REFUERZO** en el borde del escote la blusa.
- Coser juntos los extremos de la banda del escote (7).
- Revés con revés, doblar la banda a lo largo de la línea de doblez. Prender juntos con alfileres los bordes no terminados.
- Prender con alfileres la banda al borde del escote, coincidiendo los centros, haciendo los piquetes necesarios en el borde del escote del top. Coser, estirando la banda para encajar. Coser nuevamente a 6 mm del margen de costura. Asentar la costura hacia abajo.
- Hacer un **PESPUNTE DE ADORNO** en el borde del escote del top. Si desea, recortar la costura cerca del **PESPUNTE DE ADORNO**.

### MANGA Y BANDAS

- Derecho con derecho, prender con alfileres la manga (8) al borde de la sisa, colocando el círculo grande en la costura del hombro; hilvanar. Coser, coser nuevamente a 6 mm del margen de costura. Recortar cerca al pespunte. Asentar la costura hacia el top.
- Prender con alfileres el frente a la espalda por los costados; prender juntos con alfileres los bordes de la manga. Coser con una costura continua. **COSER EL BORDE** debajo del brazo nuevamente a lo largo del pespunte anterior.
- Coser juntos los extremos de la banda de la manga (9).
- Revés con revés, doblar la banda a lo largo de la línea de doblez. Prender juntos con alfileres los bordes no terminados.
- Prender con alfileres la banda a la manga, coincidiendo las costuras. Coser, estirando la banda para encajar. Coser nuevamente a 6 mm del margen de costura. Recortar cerca al pespunte. Asentar la costura hacia arriba.

20. Coser las piezas de la BANDA INFERIOR (10) juntas por los costados.

21. Revés con revés, doblar la banda inferior a lo largo de la línea de doblez. Prender juntos con alfileres los bordes no terminados.

22. Prender con alfileres la banda al borde inferior del top, coincidiendo las costuras. Coser, estirando la banda para encajar. Coser nuevamente a 6 mm del margen de costura. Recortar cerca al pespunte. Asentar la costura hacia arriba.

### PANTALON B

**NOTA:** Estirar ligeramente la tela delante y detrás de la aguja al coser.

### FRENTE Y ESPALDA

- Coser el frente (11) a la espalda (12) por el borde interior de la pierna, estirando la espalda para encajar entre el corte y el borde superior.
- Coser la costura de la entrepierna. Coser nuevamente a 6 mm del margen de costura a lo largo de la curva, como se indica. Recortar cerca al segundo pespunte.
- Coser una pieza del bolsillo (13) al frente y espalda por cada costado con una costura de 6 mm. Asentar las costuras hacia los bolsillos.
- Coser el frente y espalda juntos por los costados, dejando abierto entre los círculos grandes.
- Voltear el bolsillo del frente hacia el frente a lo largo de las líneas de costura; asentar.
- Hacer un **PESPUNTE DE ADORNO** en el borde de la abertura del bolsillo del frente, girando hasta los círculos grandes, manteniendo el bolsillo de la espalda suelto.
- Coser los bordes del bolsillo juntos por las costuras del costado. Hacer un piquete en los márgenes de costura de la espalda sobre y debajo de los bolsillos.
- Voltear los bolsillos hacia el frente a lo largo de las líneas de costura; asentar. Hilvanar el borde superior en su lugar. Acabado
- Para introducir fácilmente el elástico, hilvanar aproximadamente a 7.5 cm de la costura en su lugar en la zona de la jareta.
- Para formar la jareta para el elástico, voltear el borde superior del pantalón hacia dentro a lo largo de la línea de doblez; asentar. Coser a 6 mm del borde no terminado, dejando una abertura, como se indica.

11. Cortar el elástico del largo de la guía para elástico (14).

12. Introducir el elástico en la abertura. Sobreponer los extremos y sujetarlos con un imperdible. Probarse; ajustar si es necesario. Coser bien los extremos del elástico.

13. Coser la abertura en la jareta, estirando el elástico al coser.

14. Coser juntos los extremos de la banda de la pierna (15).

15. Revés con revés, doblar la banda a lo largo de la línea de doblez. Prender juntos con alfileres los bordes no terminados.

16. Prender con alfileres la banda al borde inferior del pantalón, coincidiendo las costuras por la parte interior de la pierna. Coser, estirando la banda para encajar. Coser nuevamente a 6 mm del margen de costura. Recortar cerca al pespunte. Asentar la costura hacia arriba.