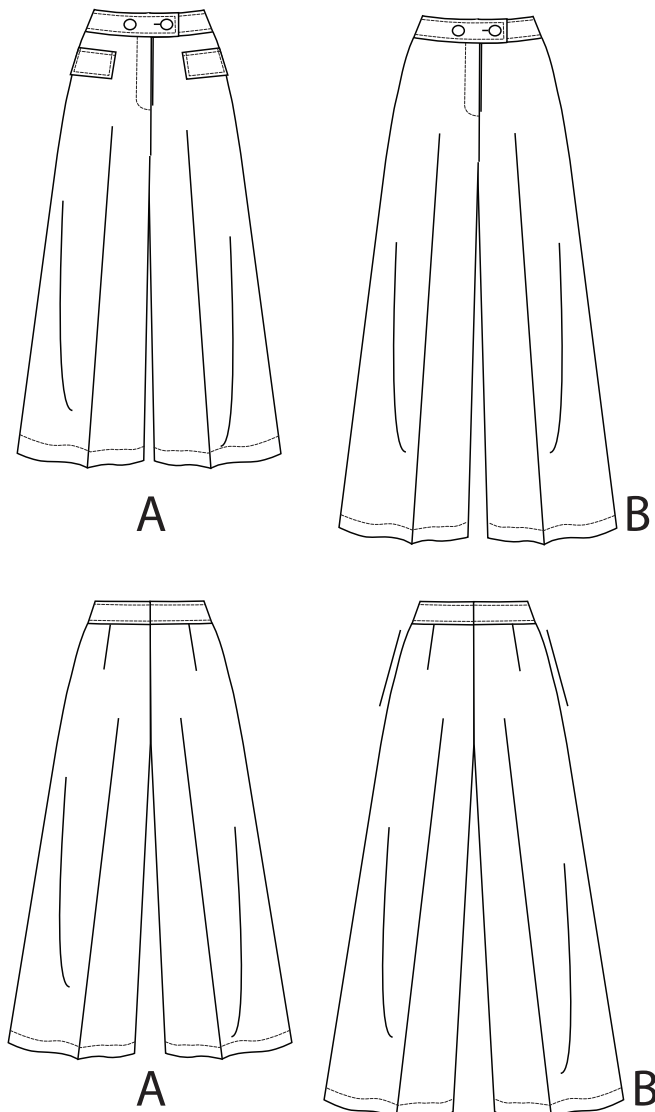


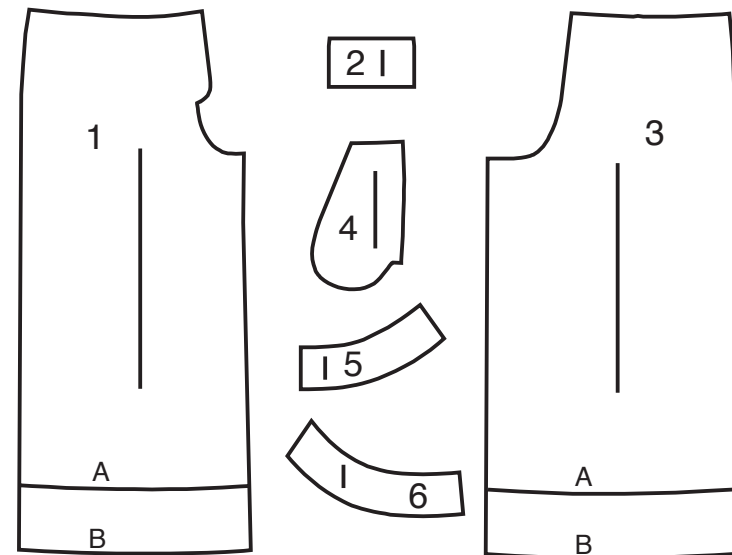
# NEW LOOK® N6769

www.simplicity.com info@simplicity.com 1-888-588-2700

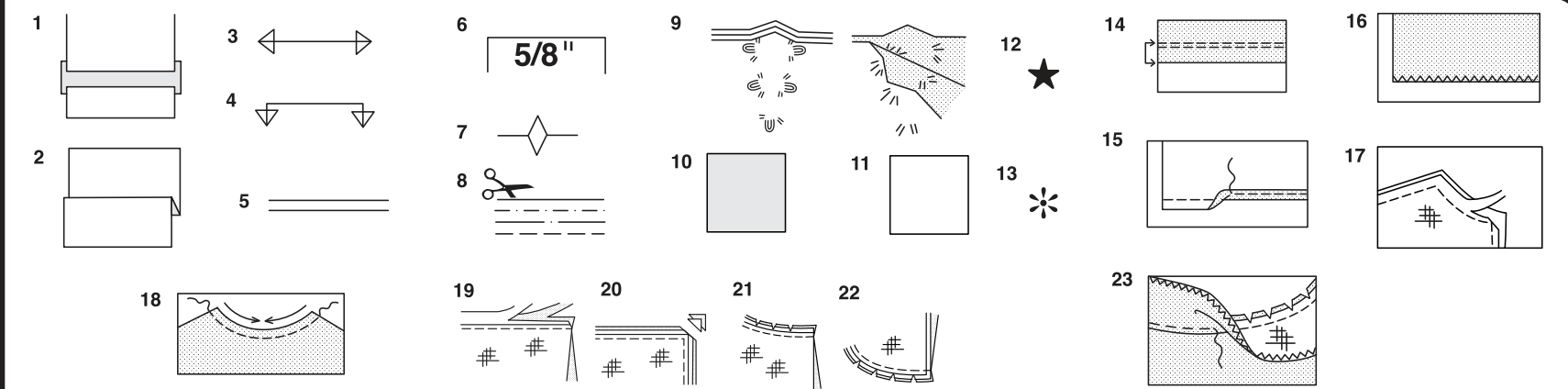
Thank you for purchasing this New Look pattern. We made every effort to provide you with a high quality product. Gracias por haber comprado este patrón de New Look. Hemos hecho todos los esfuerzos para ofrecerle un producto de alta calidad.



6 PIECES



- 1 FRONT
- 2 FLAP A
- 3 BACK
- 4 POCKET B
- 5 YOKE BACK
- 6 YOKE FRONT



### How To Use Your Multi Size Pattern

#### First Prepare Your Pattern

Select the pattern pieces according to the view you are making.

This pattern is made to body measurements with ease allowed for comfort and style. If your body measurements differ from those on the pattern envelope adjust the pieces before placing them on the fabric.

Check your back neck to waist and dress length, if necessary, alter the pattern. Lengthening and shortening lines are indicated.

1. **TO LENGTHEN** : Cut pattern between printed lines and place paper underneath. Spread pattern the required amount and pin to paper.
2. **TO SHORTEN** : Fold at the printed lines to form a pleat half the amount to be shortened, ie 1/2" (1.3cm) deep to shorten 1" (2.5cm).

#### Study Your Pattern Markings

3. **STRAIGHT GRAIN** : Place an even distance from selvage or a straight thread.
4. **FOLD** : Place on fold of fabric.
5. **LENGTHENING AND SHORTENING LINES**.
6. **SEAM ALLOWANCE** : 5/8" (1.5cm) unless otherwise stated.
7. **NOTCHES** : Match notches.
8. **CUTTING LINES** : Multi patterns have different cutting lines for different sizes.
9. **TAILOR-TACKS** : With double thread make two loose stitches forming loop through fabric layers and pattern leaving long ends. Cut loop to remove pattern. Snip thread between fabric layers. Leave tufts.

### Cutting Layouts

#### Cutting Directions

FOR FOLDED AND DOUBLE LAYER FABRIC - Place fabric with right side inside and pin pattern on wrong side of fabric.

FOR SINGLE LAYER - Pin pattern on right side of fabric. NOTE: Pattern pieces may interlock more closely for smaller sizes. Cut notches out from cutting line.

BEFORE removing pattern from fabric, transfer all pattern markings using tailor tacks or dressmaking tracing paper.

10. **KEY**: pattern printed side down
11. **KEY**: pattern printed side up
12. **KEY**: Cut out all pieces except pieces that extend beyond folded fabric, then open out fabric and on RIGHT side of fabric, cut in positions as shown.
13. **KEY**: For with and without nap layouts ensure fabric is placed with nap or design running in same direction.

Before pinning to fabric, press tissue pattern with a warm dry iron to remove creases.

#### Sewing Directions

Fabric Key	Right Side	Wrong Side	Interfacing	Lining

Sew garment following **Sewing Directions**.

**PIN** or machine-baste seams matching notches.

**STITCH** 5/8" (1.5cm) seams unless otherwise stated.

**PRESS** seams open unless otherwise indicated, clipping when necessary so seams will lie flat.

14. **EASE-STITCH** or **GATHER** - Loosen needle tension slightly. With RIGHT side up, stitch 5/8" (1.5cm) from cut edge using a long stitch. Stitch again 1/4" (6mm) away in the seam allowance.

**EDGE FINISH** - Neaten raw edges of seams, hems and facings using one of the following methods.

15. Stitch 1/4" (6mm) from edge, turn under along stitching and stitch.
16. Zig-zag or overlock raw edges.

17. **INTERFACING** — Pin interfacing to WRONG side of fabric. Cut across corners that will be enclosed with seams. Machine-baste 1/2" (1.3cm) from cut edge. (Shown only on first illustration). Trim interfacing close to machine-basting. For FUSIBLE interfacing, follow manufacturer's directions.

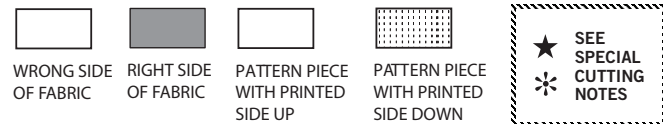
18. **STAY-STITCH** —Stitch 1/2" (1.3cm) from cut edge, in direction of arrows: (Shown only in the first illustration).

**LAYERING** — Trim seam allowance in layers.

19. Layer enclosed seams
20. Trim corners
21. Clip inner curves
22. Notch outer curves

23. **UNDERSTITCH** —Press facing away from garment; press seam toward facing. Facing side up, understitch close to seam through facing and seam allowances.

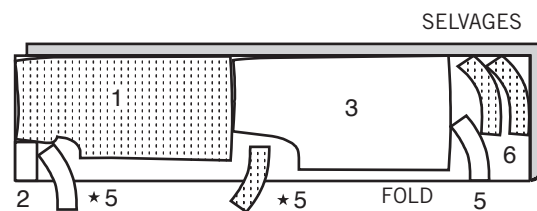
## Cutting Layouts



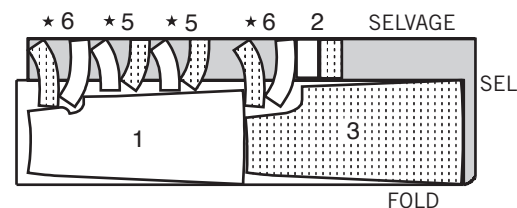
### PANTS A

USE PIECES 1 2 3 5 6

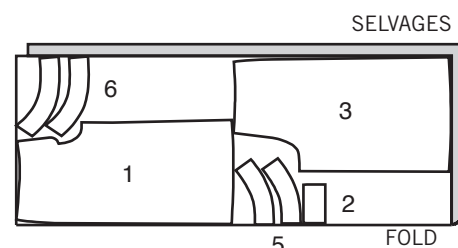
1A 45" (115CM)  
SIZE 10



1B 45" (115CM)  
SIZES 12 14 16 18 20 22



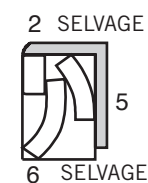
1C 60" (150CM)  
ALL SIZES



### FUSIBLE INTERFACING A

USE PIECES 2 5 6

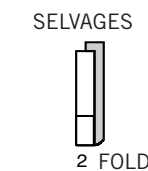
2 18" TO 20" (46CM TO 51 CM)  
ALL SIZES



### LINING A

USE PIECE 2

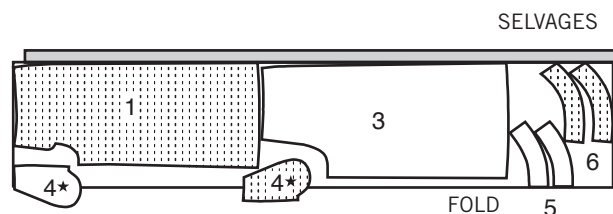
3 45" (115CM)  
ALL SIZES



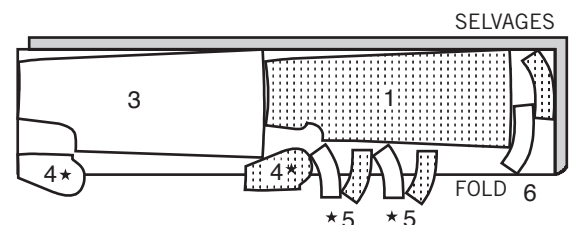
### PANTS B

USE PIECES 1 3 4 5 6

4A 45" (115CM)  
SIZES 10 12



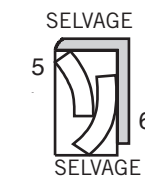
4B 45" (115CM)  
SIZES 14 16 18 20 22



### FUSIBLE INTERFACING B

USE PIECES 5 6

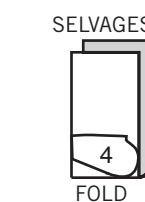
5 18" TO 20" (46CM TO 51 CM)  
ALL SIZES



### LINING B

USE PIECE 4

6 45" (115CM)  
ALL SIZES



## Español

### PANTALONES A

USE LAS PIEZAS 1 2 3 5 6  
1A 45" (115CM) / TALLA 10  
1B 45" (115CM) / TALLAS 12 14 16 18 20 22  
1C 60" (150CM) TODAS LAS TALLAS

### ENTRETELA ADHESIVA A

USE LAS PIEZAS 2 5 6

2 18" A 20" (46CM A 51 CM)  
TODAS LAS TALLAS

### FORRO A USE LA PIEZA 2

3 45" (115CM) TODAS LAS TALLAS

### PANTALONES B

USE LAS PIEZAS 1 3 4 5 6

4A 45" (115CM) TALLAS 10 12  
4B 45" (115CM) TALLAS 14 16 18 20 22  
4C 60" (150CM) TODAS LAS TALLAS

### ENTRETELA ADHESIVA B

USE LAS PIEZAS 5 6

5 18" A 20" (46CM A 51 CM)  
TODAS LAS TALLAS

FORRO B USE LA PIEZA 4  
6 45" (115CM) TODAS LAS TALLAS

SELVAGES= ORILLAS DOBLEZ

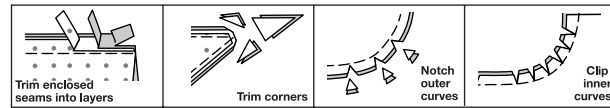
## SEWING INFORMATION

$\frac{5}{8}$ " (1.5cm) SEAM ALLOWANCES ARE INCLUDED,  
(unless otherwise indicated)

## ILLUSTRATION SHADING KEY

Right Side	Wrong Side	Interfacing	Lining	Underlining

Press as you sew. Press seams flat, then press open, unless otherwise instructed. Clip seam allowances, where necessary, so they lay flat.



## GLOSSARY

Sewing terms appearing in **BOLD TYPE** in Sewing Instructions are explained below.

**EASESTITCH** - Stitch along seamline, using long machine stitches. Pull thread ends when adjusting to fit.

**NOTE:** For sleeve caps, make a second row of long machine stitches  $\frac{1}{4}$ " (6mm) away in seam allowance for more control.

**EDGESTITCH** - Stitch close to finished edge or seam.

**FINISH** - Stitch  $\frac{1}{4}$ " (6mm) from raw edge and finish with one of the following:

(1) Pink OR (2) Overcast OR (3) Turn in along stitching and stitch close to fold OR (4) Overlock.

**OPTIONAL FOR HEMS-** Apply Seam Binding.

**SLIPSTITCH** - Slide needle through a folded edge, then pick up a thread of underneath fabric.

**TOPSTITCH** - On outside, stitch  $\frac{1}{4}$ " (6mm) from edge, seam or previous stitching, using presser foot as guide, or stitch where indicated in instructions.

**UNDERSTITCH** - Open out facing or underside of garment; stitch to seam allowance close to seam.

## SEWING INFORMATION

## PANTS A, B

**NOTE:** Under each sub-heading, the first View will be illustrated, unless otherwise indicated.

## INTERFACING

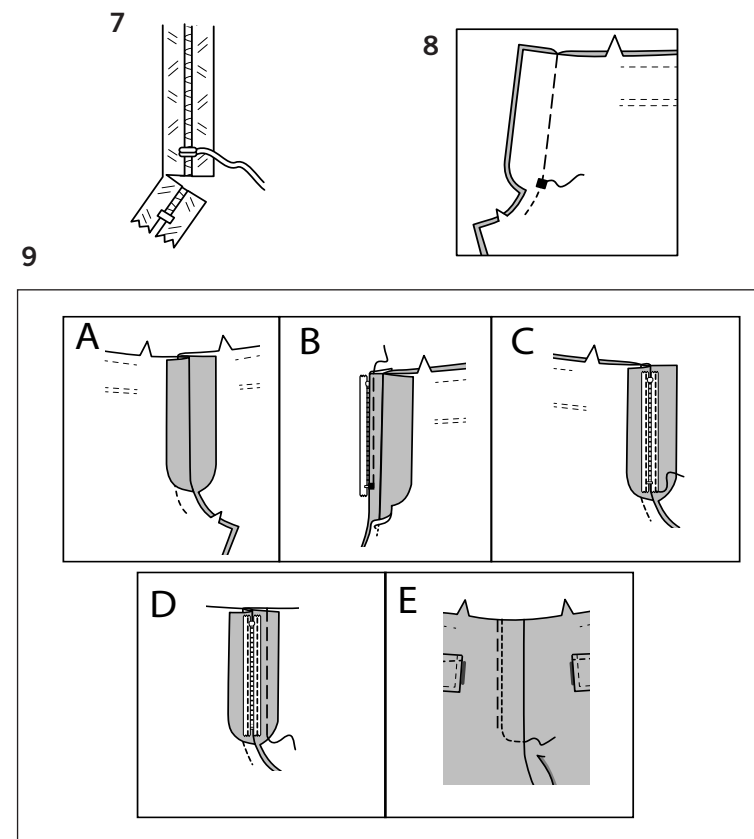
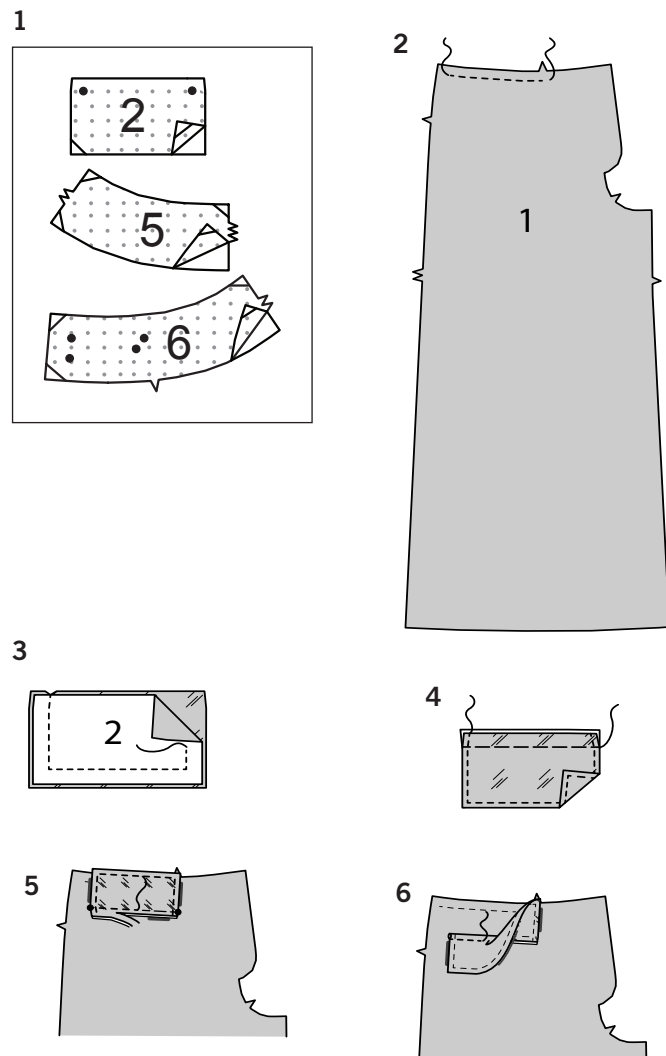
1. Pin **INTERFACING** to wrong side of each matching **FABRIC** section. Trim corners diagonally inside seam allowance, as shown. Fuse, following manufacturer's instructions.

## FRONT AND BACK

2. **EASESTITCH** upper edge of **FRONT** (1) between seamline and notch, as shown.

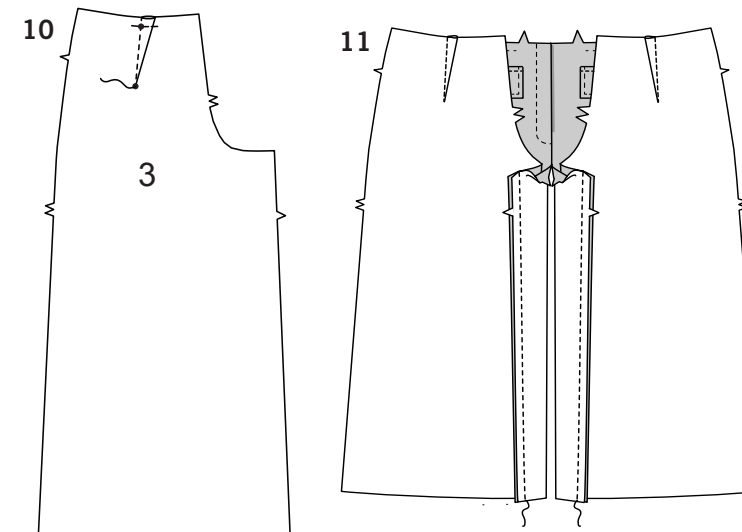
## VIEW A:

3. Stitch **FLAP** (2) to flap **LINING** (2), leaving upper edge open. Trim.
4. Turn right side out. Press. Baste raw edges together. **TOPSTITCH** finished edges.
5. With right sides together, pin flap to front, placing seamline along stitching line. Baste. Stitch along seamline between small circles. Trim flap seam allowance to a scant  $\frac{1}{4}$ " (6mm), being careful not to cut front.
6. Turn flap down. Press. **TOPSTITCH** upper edge of flap, encasing trimmed edge.



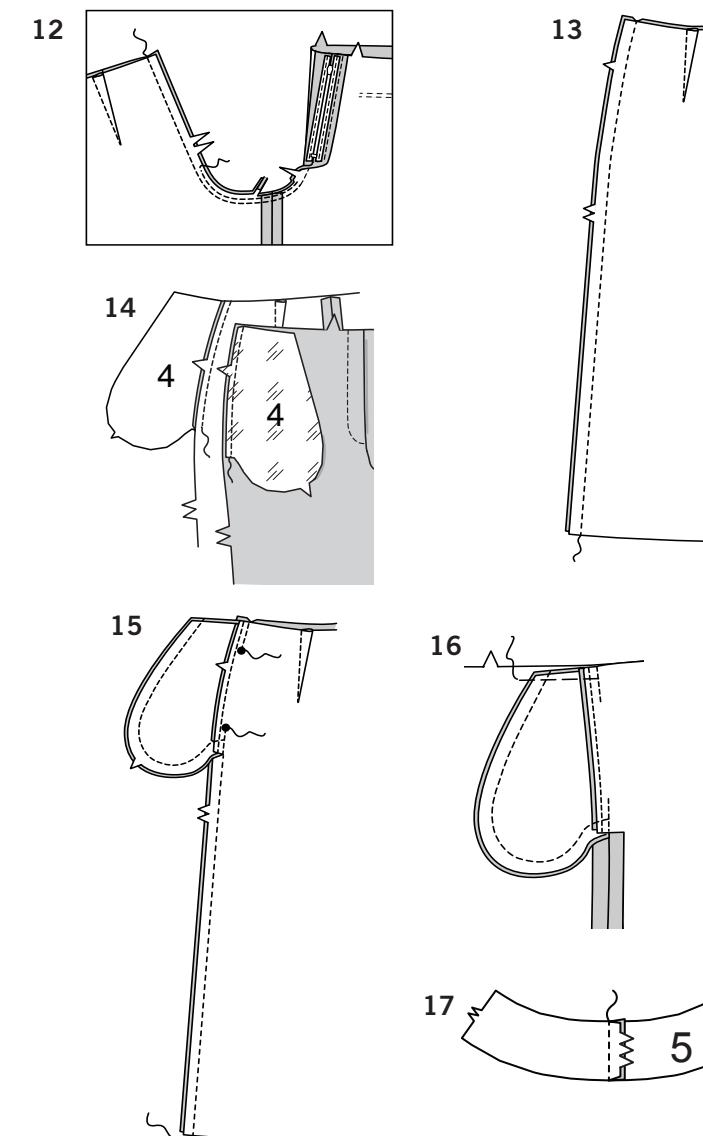
## ZIPPER AND SIDES

7. **NOTE:** It may be necessary to shorten zipper. To make new zipper stop, place zipper along opening edge with pull tab  $\frac{3}{8}$ " (1cm) below seamline. Mark placement of new zipper stop. Whipstitch across teeth at marking. Cut zipper  $\frac{3}{4}$ " (2cm) below the new stop.
8. Stitch front sections together at center front between notch and square. Machine baste above square.
9. (A) Turn left front extension to inside along foldline, as shown. Press. (B) Place closed zipper (face up) under left front extension, placing zipper stop at large circle and zipper teeth close to pressed edge. Using a zipper foot, stitch close to edge. (C) Pin remaining zipper tape to right front extension. Stitch, keeping front free. (D) Turn right front extension toward front. Baste in place. (E) On outside, stitch right front along stitching line.



10. Stitch dart in **BACK** (3). Press toward center. Baste upper edge.

11. Stitch front and back together at inner leg edges.



12. Stitch remainder of crotch seam to notch on front. Stitch again  $\frac{1}{4}$ " (6mm) away in seam allowance along curve, as shown. Trim close to second stitching.

13. **VIEW A-** Stitch front to back at sides. Press seams toward back.

## VIEW B:

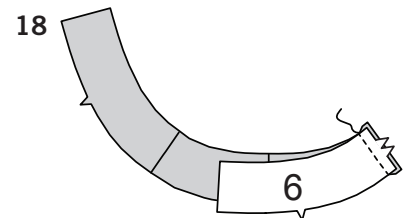
14. Stitch one **POCKET** (4) section (lining) to front at each side in  $\frac{1}{4}$ " (6mm) seam. Press seams toward pockets. Stitch one **POCKET** section (fabric) to back at each side in  $\frac{1}{4}$ " (6mm) seam. Press seams toward pockets.

15. Stitch front and back together at sides, leaving opening between large circles. Stitch pocket edges together to side seams. Clip back seam allowances below pockets.

16. Turn pockets toward front along seamlines; press. Baste upper edge.

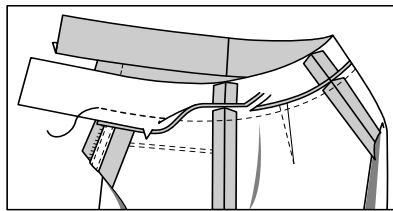
## YOKE

17. Stitch uninterfaced **YOKE BACK** (5) sections together at center back.

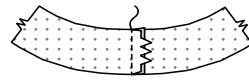


- 18.** Stitch one uninterfaced YOKE FRONT (6) section to each side of yoke back.  
(NOTE: Interfaced yoke sections will be used as facing).

19

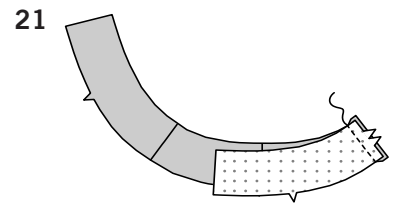


20

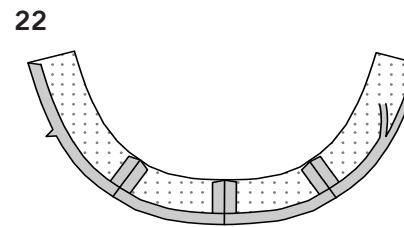


- 19.** Pin yoke to upper edge of pants, matching centers. Adjust ease; baste. Stitch. Trim. Press seam toward yoke.

- 20.** Stitch yoke back FACING sections together at center back.

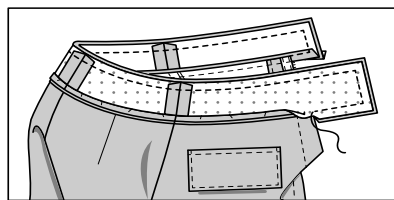


- 21.** Stitch yoke front FACING sections to yoke back at sides.



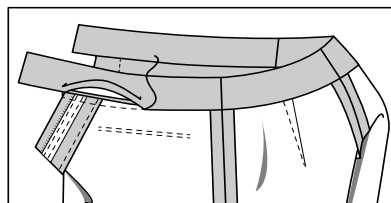
- 22.** Turn in seam allowance on lower edge of yoke facing. Press, easing in fullness. Trim pressed seam allowance to 3/8" (1cm).

23



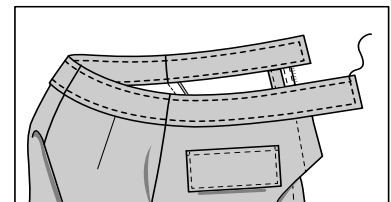
- 23.** With right sides together, pin facing to yoke, matching centers. Stitch front opening and upper edges. Trim.

24



- 24.** Turn facing to inside. Press. **SLIPSTITCH** pressed edge over seam and extension edges together.

25



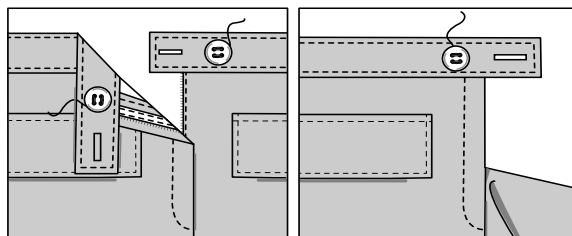
- 25.** **TOPSTITCH** all edges of yoke, as shown.

## FINISHING

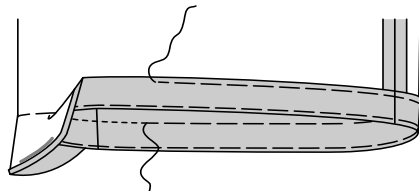
### Views A, B:

- 26.** Make buttonholes in yoke at markings. On outside, sew buttons to yoke at markings. On inside, sew button to right side of yoke at marking.

26



27



- 27.** Turn up pants hem. Baste close to fold. Turn in 1/4" (6mm) on raw edge. Baste hem in place close to upper edge. Press. **TOPSTITCH** hem along upper basting.

## INFORMACION PARA LA CONFECCION

### PANTALONES A, B

**NOTA:** Bajo cada subtítulo el primer modelo será ilustrado, a menos que se indique lo contrario.

### ENTRETELA

1. Sujete con alfileres la ENTRETELA, al revés de cada sección de la TELA. Recorte las esquinas diagonalmente dentro del margen de la costura, tal como se muestra. Adhiera la entreteleta siguiendo las instrucciones del fabricante.

### FRENTE Y PARTE TRASERA

2. **HAGA PUNTADA DE FRUNCE** al borde superior del FRENTE (1), entre la línea de la costura y la muesca, tal como se muestra.

#### MODELO A:

3. Cosa la SOLAPA (2) al forro de la SOLAPA (2), teniendo el borde superior abierto. Recorte.
4. Voltee al lado derecho. Planche. Hilvane conjuntamente los bordes no terminados. **HAGA PUNTADA DE ADORNO** a los bordes terminados.
5. **DERECHO CON DERECHO**, sujete la solapa al frente, colocando la línea de la costura a lo largo de la línea de la puntada. Hilvane. Cosa a lo largo de la línea de la costura entre los círculos pequeños. Recorte el margen de la costura de la solapa a escasos 1/4" (6mm), teniendo cuidado de no cortar el frente.
6. Voltee la solapa hacia abajo. Planche. **HAGA PUNTADA DE ADORNO** al borde superior de la solapa, encapsulando el borde cortado.

### CREMALLERA Y LATERALES

7. **NOTA:** Es posible que sea necesario recortar la cremallera. Para hacer el nuevo tope de la cremallera, coloque la cremallera a lo largo del borde abierto, con la haladera a 3/8" (1cm) por debajo de la línea de la costura. Marque la ubicación del nuevo tope. Haga puntada respuntada través de la cremallera sobre la marca. Corte la cremallera a 3/4" (2cm) por debajo del nuevo tope.
8. Cosa conjuntamente las secciones frontales al frente central, entre la muesca y el cuadro. Hilvane a máquina por encima del cuadrado.
9. **A)** Voltee la extensión frontal izquierda al interior, a lo largo de la línea del dobléz. Planche.  
**B)** Coloque la cremallera cerrada (cara hacia arriba), debajo de la extensión frontal izquierda, colocando el tope de la cremallera, en el círculo grande y los dientes de la cremallera, cerca del borde doblado. Usando un pie de la máquina para cremallera, cósala cerca del borde.  
**C)** Sujete con alfileres el resto de la cinta de la cremallera, a la extensión frontal derecha. Cosa manteniendo el frente libre.  
**D)** Voltee la extensión frontal derecha hacia el frente. Hilvane en su lugar.  
**E)** En el EXTERIOR, cosa el frente derecho a lo largo de la línea de la puntada.

10. Cosa la PINZA en la parte trasera (3). Planche hacia el centro. Hilvane el borde superior.

11. Cosa conjuntamente el frente a la parte posterior, en los bordes interiores de la pierna.

12. Cosa el resto de la costura de la entrepierna, a la muesca en el frente. Cosa de nuevo a 1/4" (6mm) a distancia en el margen de la costura, a lo largo de la curva como se muestra. Recorte cerca de la puntada siguiente.

13. **MODELO A:** Cosa el frente a la parte posterior en los lados. Planche las costuras hacia atrás.

#### MODELO B:

14. Cosa una sección (forro) del BOLSILLO (4) al frente, a cada lado en una costura de 1/4" (6mm). Planche las costuras hacia los bolsillos. Cosa una sección (tela) a la parte trasera, a cada lado en una costura de 1/4" (6mm). Planche las costuras hacia el bolsillo.

15. Cosa conjuntamente el frente a la parte trasera en los lados, dejando una abertura entre los círculos grandes. Cosa juntos los bolsillos a las costuras laterales. Haga cortes en los márgenes de la costura por debajo de los bolsillos.

16. Voltee los bolsillos hacia el frente, a lo largo de las líneas de la costura; planche. Hilvane el borde superior.

17. Cosa juntas las secciones TRASERAS DEL CANESU (5) sin entreteleta, en la parte trasera central.

18. Cosa una sección FRONTAL DEL CANESU (6) sin entreteleta, a cada lado de la parte trasera del canesú. (NOTE: Las secciones del canesú entreteledado, serán usadas como vistas).

19. Sujete con alfileres el canesú al borde superior de los pantalones, casando los centros. Ajuste el frunce; hilvane. Cosa. Recorte. Planche la costura hacia el canesú.

20. Cosa conjuntamente las secciones de la VISTA trasera del canesú, en la parte trasera central.

21. Cosa conjuntamente las secciones de la VISTA frontal del canesú, a la parte trasera del canesú en los lados.

22. Voltee en los márgenes de la costura sobre el borde inferior de la vista del canesú. Planche, frunciendo la totalidad. Recorte el margen de la costura doblado a 3/8" (1cm).

23. **DERECHO CON DERECHO**, sujete con alfileres la vista al canesú, casando los centros. Cosa la abertura frontal y los bordes superiores. Recorte.

24. Voltee la vista al interior. **HAGA PUNTADA FALSA** al borde doblado, conjuntamente sobre la costura y los bordes de la extensión.

25. **HAGA PUNTADA FALSA** a todos los bordes del canesú, como se muestra.

### TERMINADO MODELOS A Y B:

26. Haga los ojales al canesú sobre las marcas. En el EXTERIOR, cosa los botones al canesú sobre las marcas. En el INTERIOR, cosa el botón al lado derecho del canesú en la marca.

27. Voltee el dobladillo de los pantalones hacia arriba. Hilvane cerca del dobléz. Voltee a 1/4" (6mm) sobre el borde no terminado. Hilvane el dobladillo en su lugar, cerca del borde superior. Planche. **HAGA PUNTADA DE ADORNO** al dobladillo, a lo largo del hilvanado superior.