

1 of 4

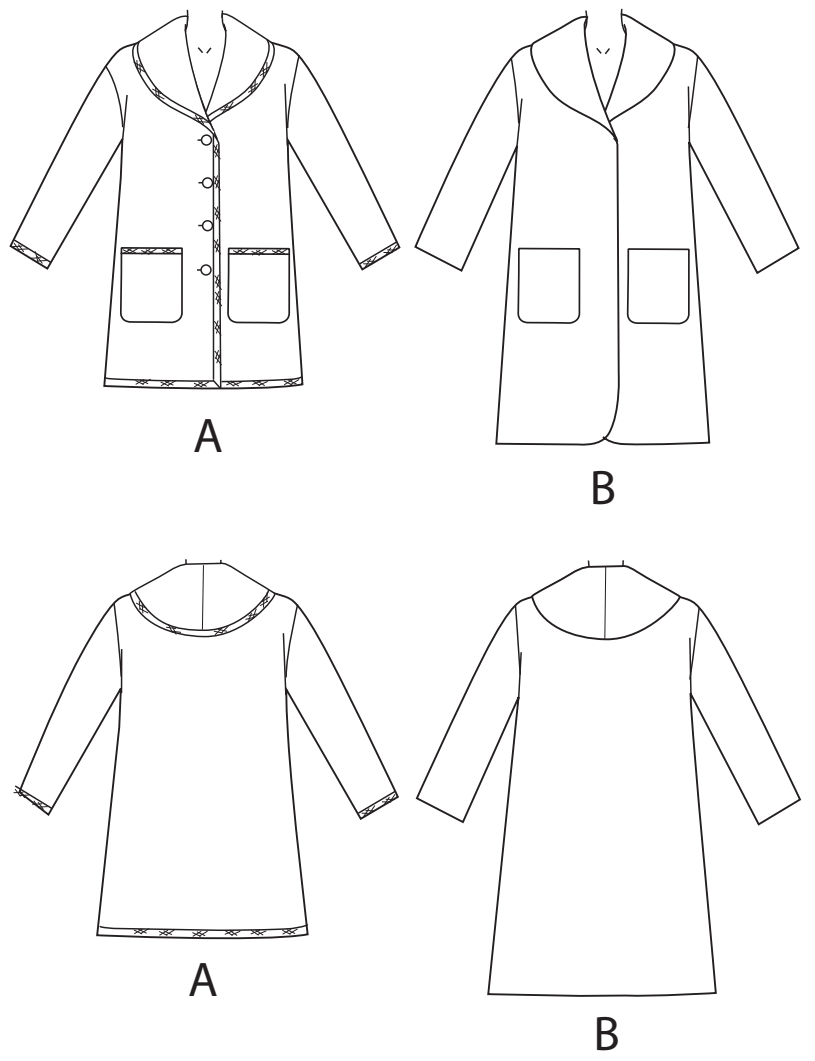
NEWLOOK® N6767

 www.simplicity.com

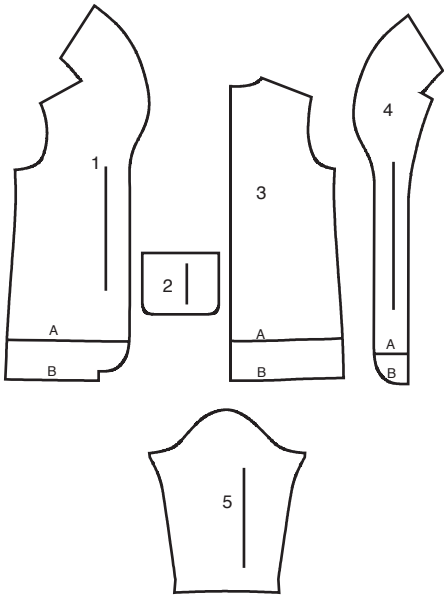
 info@simplicity.com

 1-888-588-2700

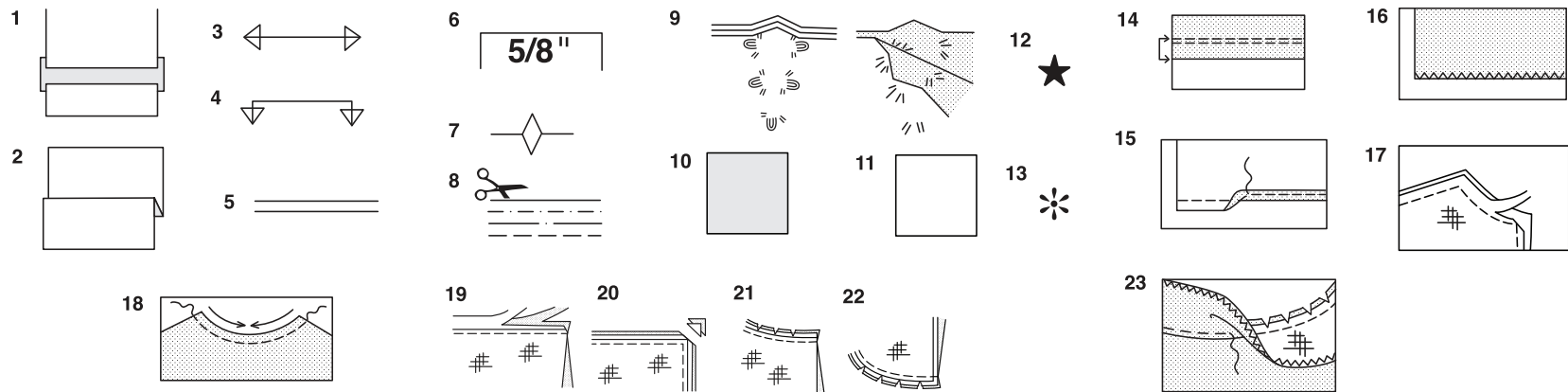
Thank you for purchasing this New Look pattern.
We made every effort to provide you with a high quality product.
Gracias por haber comprado este patrón de New Look.
Hemos hecho todos los esfuerzos para ofrecerle un producto de alta calidad.



5 PIECES



- 1 FRONT A, B
2 POCKET A, B
3 BACK A B
4 FRONT FACING A, B
5 SLEEVE



How To Use Your Multi Size Pattern

First Prepare Your Pattern

- Select the pattern pieces according to the view you are making.
- This pattern is made to body measurements with ease allowed for comfort and style. If your body measurements differ from those on the pattern envelope adjust the pieces before placing them on the fabric.
- Check your back neck to waist and dress length, if necessary, alter the pattern. Lengthening and shortening lines are indicated.
- TO LENGTHEN** : Cut pattern between printed lines and place paper underneath. Spread pattern the required amount and pin to paper.
 - TO SHORTEN** : Fold at the printed lines to form a pleat half the amount to be shortened, ie 1/2" (1.3cm) deep to shorten 1" (2.5cm).

Study Your Pattern Markings

- STRAIGHT GRAIN** : Place an even distance from selvage or a straight thread.
- FOLD** : Place on fold of fabric.
- LENGTHENING AND SHORTENING LINES.**
- SEAM ALLOWANCE** : 5/8" (1.5cm) unless otherwise stated.
- NOTCHES** : Match notches.
- CUTTING LINES** : Multi patterns have different cutting lines for different sizes.
- TAILOR-TACKS** : With double thread make two loose stitches forming loop through fabric layers and pattern leaving long ends. Cut loop to remove pattern. Snip thread between fabric layers. Leave tufts.

Cutting Layouts

Cutting Directions

- FOR FOLDED AND DOUBLE LAYER FABRIC - Place fabric with right side inside and pin pattern on wrong side of fabric.
- FOR SINGLE LAYER - Pin pattern on right side of fabric.
- NOTE: Pattern pieces may interlock more closely for smaller sizes. Cut notches out from cutting line.
- BEFORE removing pattern from fabric, transfer all pattern markings using tailor tacks or dressmaking tracing paper.
- KEY:** pattern printed side down
 - KEY:** pattern printed side Up
 - KEY:** Cut out all pieces except pieces that extend beyond folded fabric, then open out fabric and on RIGHT side of fabric, cut in positions as shown.
 - KEY:** For with and without nap layouts ensure fabric is placed with nap or design running in same direction.
- Before pinning to fabric, press tissue pattern with a warm dry iron to remove creases.

Sewing Directions

Fabric Key	Right Side	Wrong Side	Interfacing	Lining
------------	------------	------------	-------------	--------

Sew garment following **Sewing Directions**.

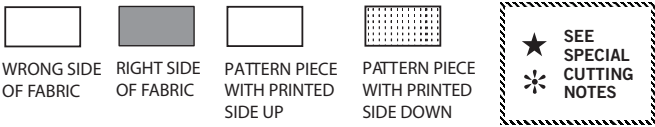
PIN or machine-baste seams matching notches.

STITCH 5/8" (1.5cm) seams unless otherwise stated.

PRESS seams open unless otherwise indicated, clipping when necessary so seams will lie flat.

- EASE-STITCH** or **GATHER** - Loosen needle tension slightly. With RIGHT side up, stitch 5/8" (1.5cm) from cut edge using a long stitch. Stitch again 1/4" (6mm) away in the seam allowance.
- EDGE FINISH** - Neaten raw edges of seams, hems and facings using one of the following methods.
 - Stitch 1/4" (6mm) from edge, turn under along stitching and stitch.
 - Zig-zag or overlock raw edges.
- INTERFACING** — Pin interfacing to WRONG side of fabric. Cut across corners that will be enclosed with seams. Machine-baste 1/2" (1.3cm) from cut edge. (Shown only on first illustration). Trim interfacing close to machine-basting. For FUSIBLE interfacing, follow manufacturer's directions.
- STAY-STITCH** —Stitch 1/2" (1.3cm) from cut edge, in direction of arrows: (Shown only in the first illustration).
- LAYERING** — Trim seam allowance in layers.
 - Layer enclosed seams
 - Trim corners
 - Clip inner curves
 - Notch outer curves
- UNDERSTITCH** —Press facing away from garment; press seam toward facing. Facing side up, understitch close to seam through facing and seam allowances.

Cutting Layouts

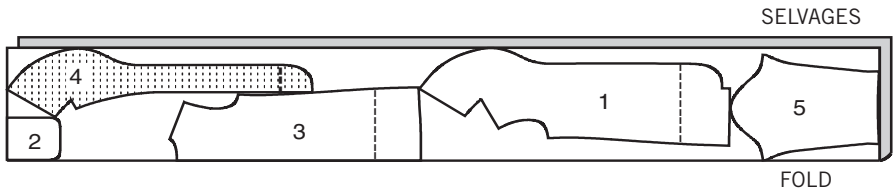


NOTE: DASHED LINE SHOWN ON PATTERN PIECES IN CUTTING LAYOUTS INDICATES CUTTING LINE FOR SHORTER LENGTH

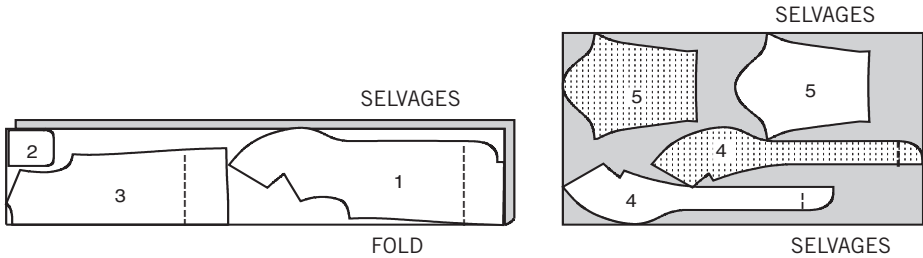
COAT A,B

USE PIECES 1 2 3 4 5

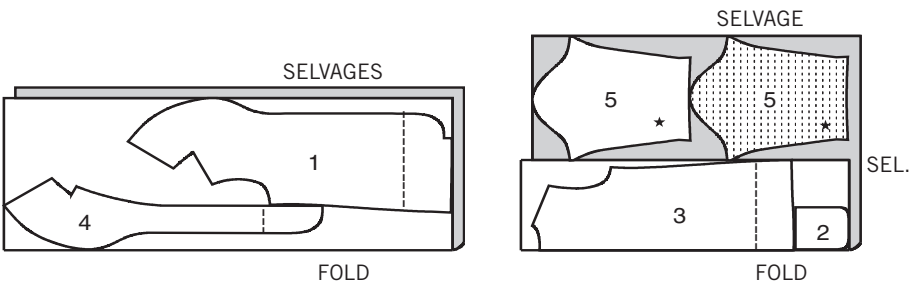
1A 45" (115 CM)
SIZES XS S M



1B 45" (115 CM)
SIZES L XL



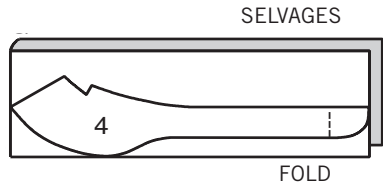
1C 60" (150 CM)
ALL SIZES



FUSIBLE INTERFACING A,B

USE PIECE 4

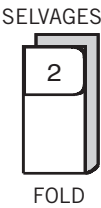
2 18" TO 20" (46 TO 51 CM)
ALL SIZES



LINING A, B (POCKETS)

USE PIECE 2

3 45" (115 CM)
ALL SIZES



Español

NOTA: LAS LINEAS ENTRE CORTADAS QUE SE MUESTRAN EN EL PATRÓN EN EL DIAGRAMA DE CORTE, INDICAN LAS LINEAS DE CORTE PARA EL MODELO MAS CORTO

ABRIGO A,B

USE LAS PIEZAS 1 2 3 4 5

1A 45" (115 CM) TALLAS XP P M

1B 45" (115 CM) TALLAS G XG

1C 60" (150 CM) TODAS LAS TALLAS

ENTRETELA ADHESIVA A,B

USE LA PIEZA 4

2 18" A 20" (46 A 51 CM)
TODAS LAS TALLAS

FORRO A, B (BOLSILLOS)

USE LA PIEZA 4 2

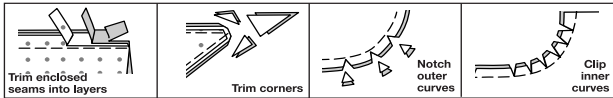
3 45" (115 CM) TODAS LAS TALLAS

SELVAGES= ORILLAS
FOLD= DOBLEZ

ILLUSTRATION SHADING KEY

Right Side	Wrong Side	Interfacing	Lining	Underlining

5/8" (1.5cm) SEAM ALLOWANCES ARE INCLUDED, (unless otherwise indicated)



Press as you sew. Press seams flat, then press open, unless otherwise instructed. Clip seam allowances, where necessary, so they lay flat.

SEWING INFORMATION

GLOSSARY

Sewing terms appearing in **BOLD TYPE** in Sewing Instructions are explained below.

EDGESTITCH - Stitch close to finished edge or seam.

FINISH - Stitch 1/4" (6mm) from raw edge and finish with one of the following: (1) Pink OR (2) Overcast OR (3) Turn in along stitching and stitch close to fold OR (4) Overlock.

OPTIONAL FOR HEMS: Apply Seam Binding.

REINFORCE - Stitch along seamline where indicated in sewing instructions, using small machine stitches.

SLIPSTITCH - Slide needle through a folded edge, then pick up a thread of underneath fabric.

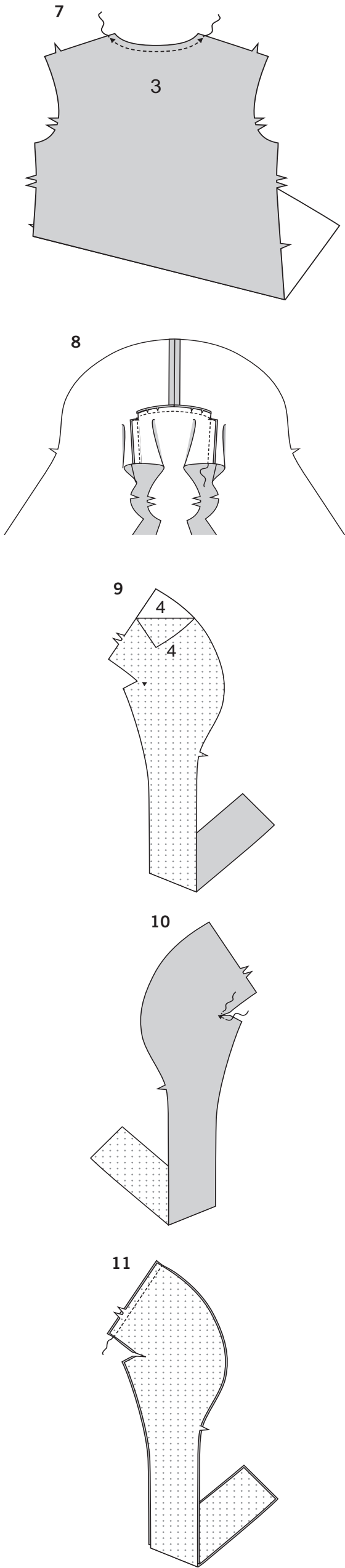
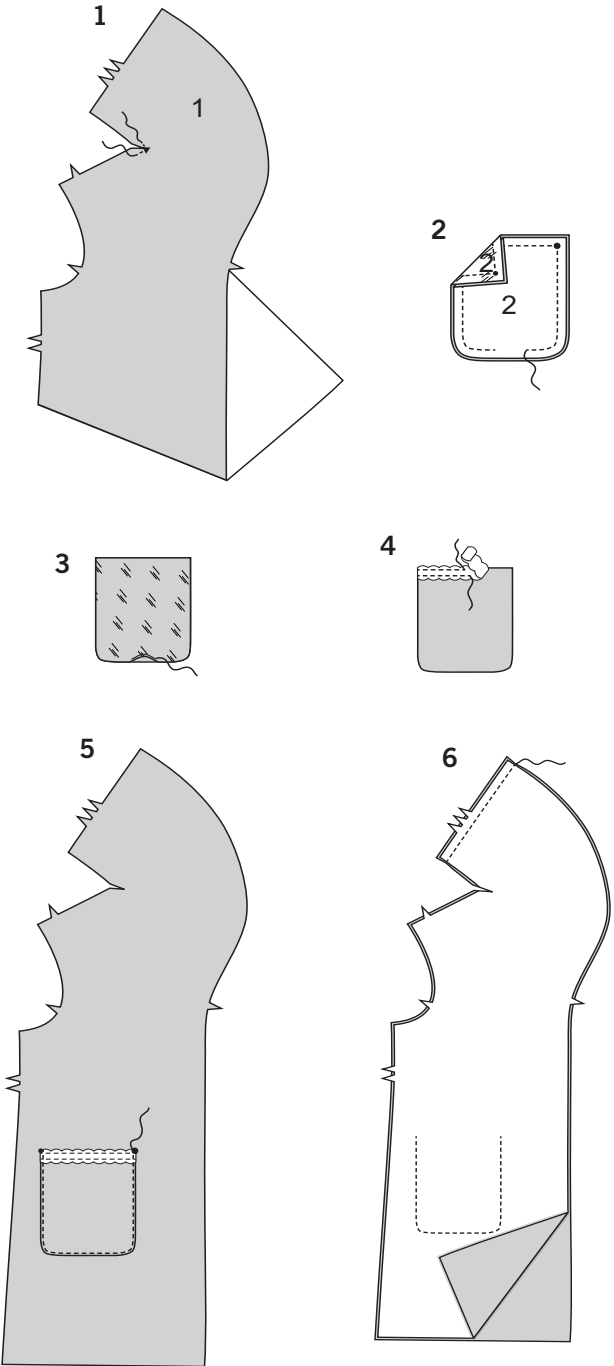
STAYSTITCH - Stitch 1/8" (3mm) from seamline in seam allowance (usually 1/2" (13mm) from raw edge).

COAT A, B

NOTE: Illustrated for View A, unless otherwise indicated.

FRONT AND BACK

- 1. REINFORCE** inner corner of FRONT (1), pivoting at triangle. Clip to triangle, as shown.
- With right sides together, stitch POCKET (2) and pocket LINING together, leaving an opening, as shown. Trim.
- Turn pocket right side out; press. **SLIPSTITCH** opening.
- View A: Pin flexible braid trim to upper edge of pocket, turning under ends, as shown. Stitch close to both long edges.
- Pin pocket to front, matching symbols. **EDGESTITCH** along side and lower edges.
- Stitch front under collar sections together at center back.



7. STAYSTITCH neck edge of BACK (3), as shown.

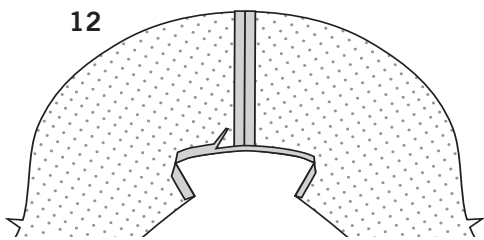
8. Pin back to front and under collar, clipping back neck edge where necessary. Stitch, pivoting at triangles. Trim neck seam. Press seam between shoulders toward under collar; press remainder of seam toward front.

FACING

9. Fuse **INTERFACING** to wrong side of FRONT FACING (4), following manufacturer's instructions.

10. REINFORCE inner corner of front facing, pivoting at triangle. Clip to triangle, as shown. **FINISH** long unnotched edge.

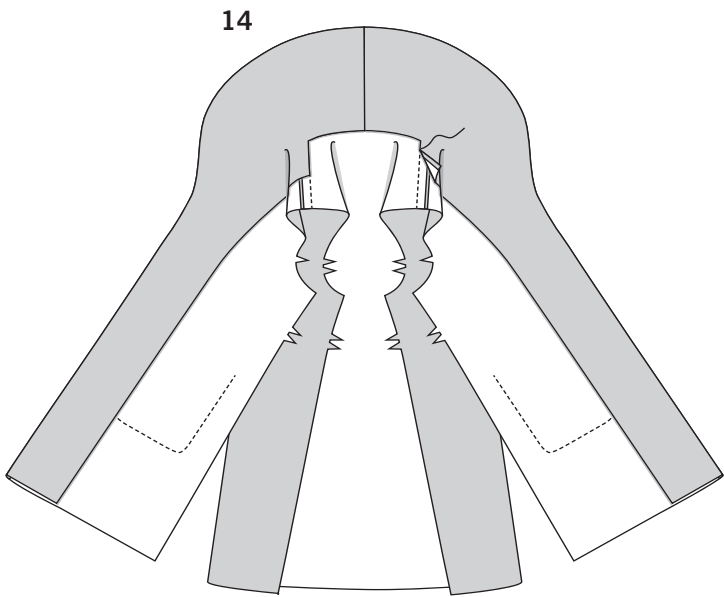
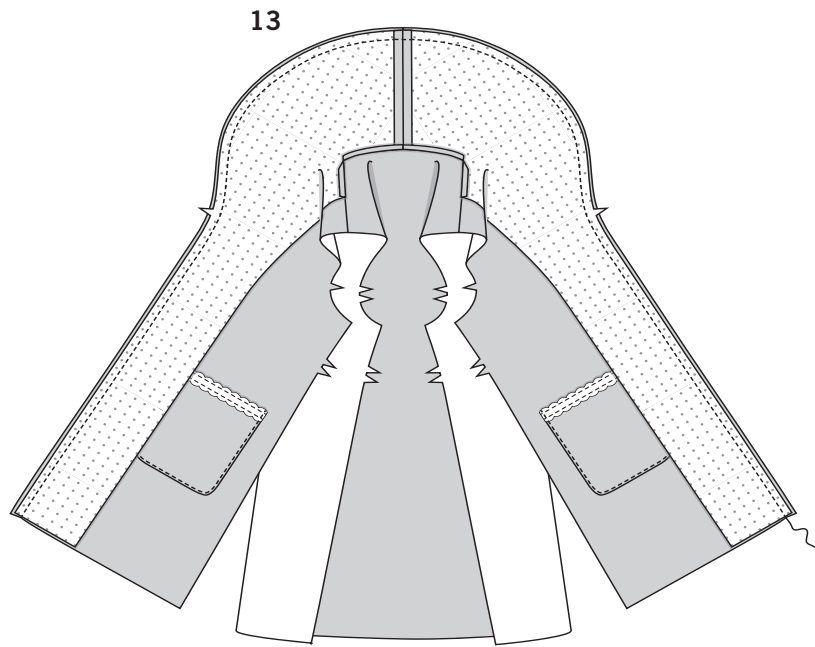
11. Stitch upper collar sections together at center back.



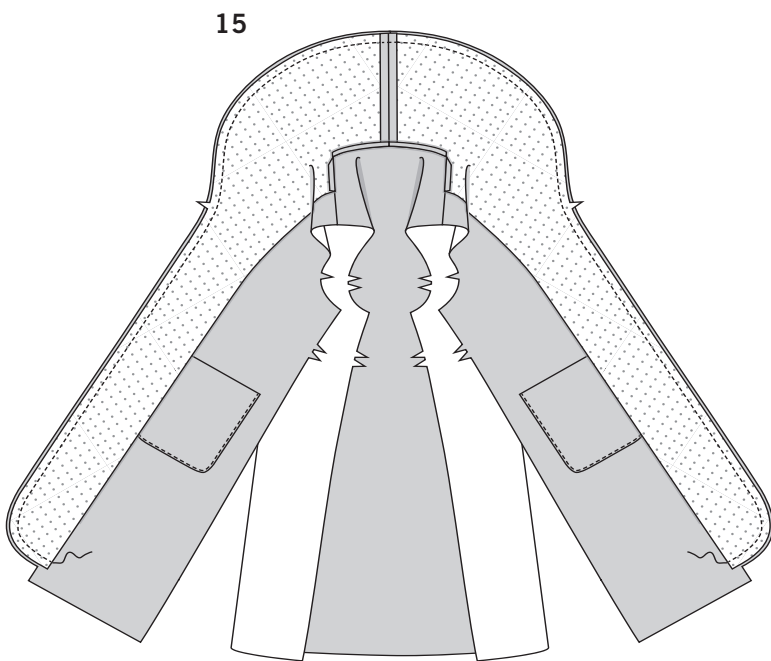
12. Turn in seam allowances on neck and shoulder edges; press. Trim pressed seam allowances to 3/8”(1cm).

View A:

13. Pin front facing and upper collar to coat and under collar. Stitch front opening and collar edges, stretching under collar and front to fit between notches.

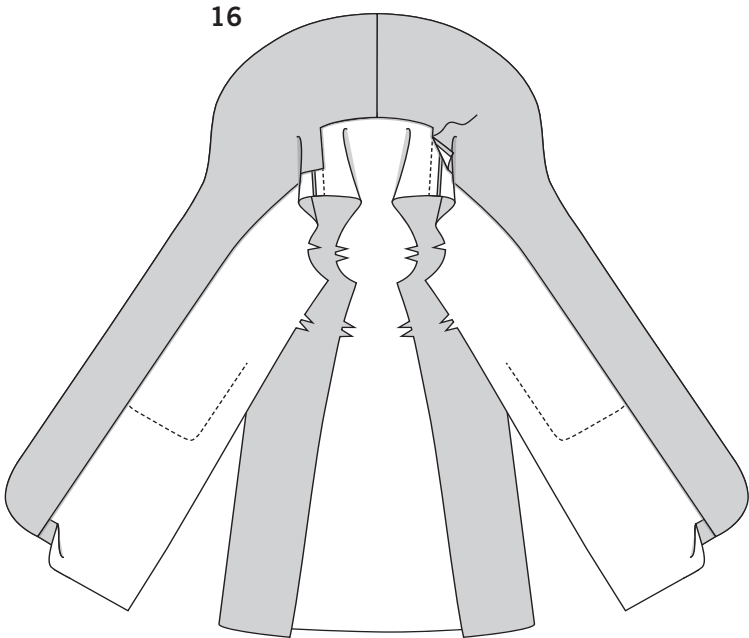


14. Turn facing to inside, turning collar right side out. Press. **SLIPSTITCH** pressed edges over neck and shoulder seams.



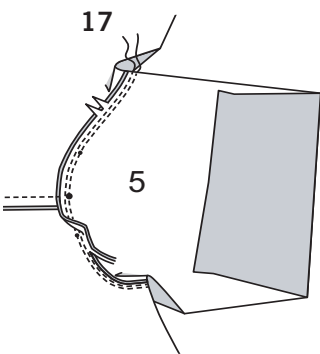
View B:

15. Pin front facing and upper collar to coat and under collar. Stitch lower, front opening and collar edges, stretching under collar and front to fit between notches.

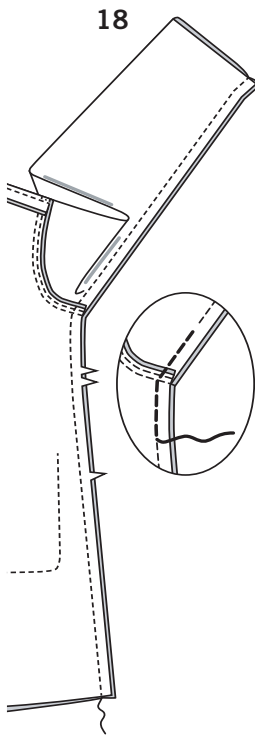


16. Turn facing to inside, turning collar right side out. Press. **SLIPSTITCH** pressed edges over neck and shoulder seams.

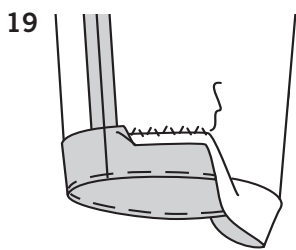
SLEEVES AND SIDE SEAMS



17. With right sides together, pin SLEEVE (5) to armhole edge, placing large circle at shoulder seam. Baste. Stitch. Stitch again 1/4”(6mm) away in seam allowance. Trim close to stitching. Press seam toward sleeve.



18. Pin back and front together at sides; pin sleeve edges together. Stitch in one continuous seam. Stitch underarm curve again along previous stitching, as shown.

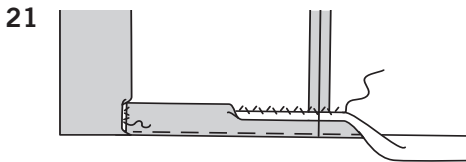
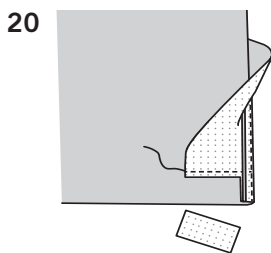


19. Turn up 2”(5cm) sleeve hem. Baste close to fold. Trim hem to an even width. **FINISH** raw edge. Sew hem in place. Press.

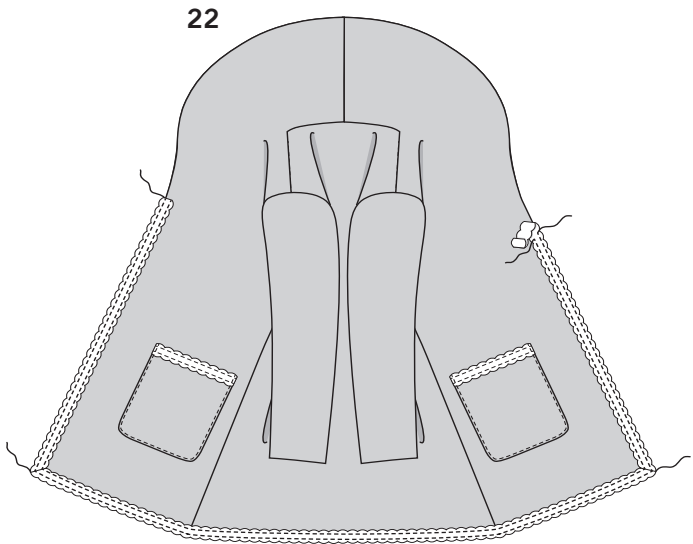
FINISHING

View A:

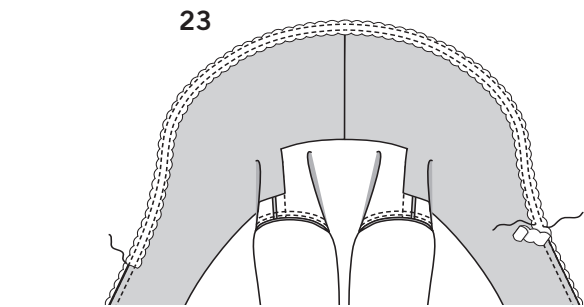
20. Turn lower edge of facing to outside along seam. Stitch across facing 2”(5cm) above raw edge. Trim, as shown.



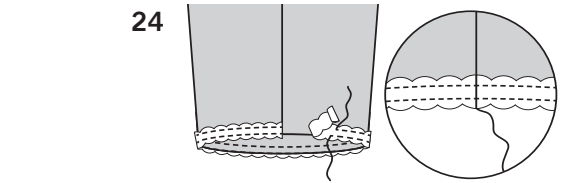
21. Turn facing to inside, turning up hem. Baste close to fold. Trim hem to an even width. **FINISH** raw edge. Sew hem in place, easing in fullness if necessary. Press. Sew facing to hem.



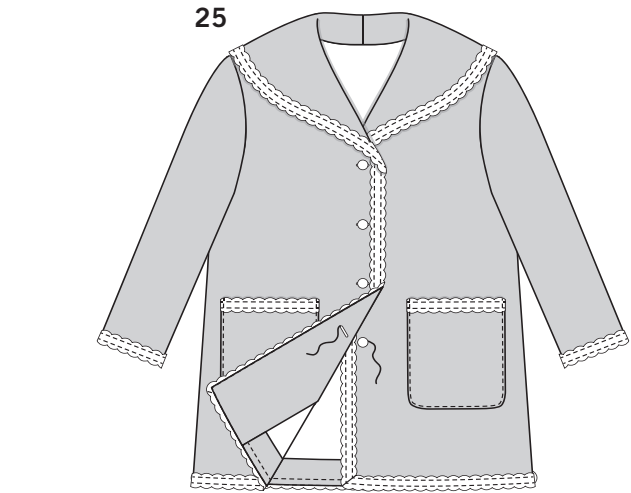
22. On outside, pin flexible braid trim to front opening and lower edge, ending to within 2”(5cm) above upper buttonhole marking, turning under ends and folding in fullness at corner, as shown. Stitch close to both long edges. **SLIPSTITCH** ends and corners.



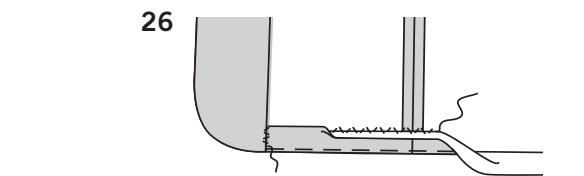
23. Starting approximately 1-1/2”(3.8cm) below upper buttonhole marking on front, pin trim to front facing and upper collar, turning under ends, as shown. Stitch close to both long edges. **SLIPSTITCH** ends.



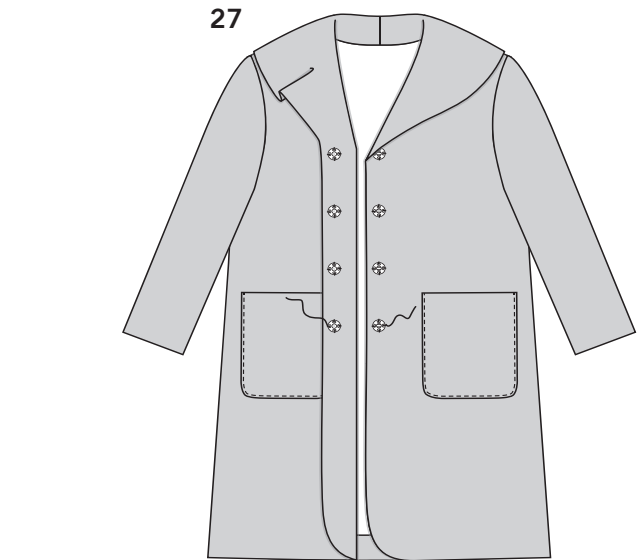
24. Pin trim to lower edge of sleeve, turning under ends to meet at seam. Stitch close to both long edges. **SLIPSTITCH** ends.



25. Make buttonholes in right front at markings. Sew buttons to left front at markings.



View B:
26. Turn up 2”(5cm) hem. Baste close to fold. Trim hem to an even width. **FINISH** raw edge. Sew hem in place, easing in fullness if necessary. Press. Sew facing to hem.



27. On inside, sew ball section of snaps to right front facing at large circles, as shown. Lap right front over left, matching centers. Mark position for socket section of snaps on left front. Sew snaps at markings.

ABRIGOS A, B

NOTA: Se ilustra el Modelo A, a menos que se indique algo en contrario.

FRENTE Y ESPALDA

- 1. REFUERCE** la esquina interior FRONTAL (1), girando en el triángulo. Haga cortes hasta el triángulo, como se muestra.
- DERECHO CON DERECHO**, cosa juntos el BOLSILLO (2) al FORRO del bolsillo, dejando una abertura, como se muestra. Recorte.
- Voltee el bolsillo al lado derecho; planche. **HAGA PUNTADA FALSA** a la abertura.
- Modelo A:** Sujete con alfileres el adorno flexible de trenza, al borde superior del bolsillo, volteando debajo de los extremos, tal como se muestra. Cosa cerca de ambos bordes largos.
- Sujete con alfileres el bolsillo al frente, casando los símbolos. **HAGA PUNTADA DE BORDE** a lo largo de los bordes lateral e inferior.
- Cosa juntos el frente debajo de las secciones del cuello, en la parte trasera central.
- HAGA PUNTADA DE SOSTEN** al borde del escote de la espalda (3), como se muestra.
- Sujete con alfileres la espalda al frente y debajo del cuello, haciendo cortes al borde del escote trasero, donde lo considere conveniente. Cosa, girando en los triángulos. Recorte la costura del escote. Planche la costura entre los hombros hacia debajo del cuello; planche el resto de la costura hacia el frente.

VISTA

- Adhiera la **ENTRETELA** al revés de la VISTA FRONTAL (4), siguiendo las instrucciones del fabricante.
- REFUERCE** la esquina interior de la vista frontal, girando en el triángulo. Haga cortes hasta el triángulo, tal como se muestra. **TERMINE** el borde largo sin muescas.
- Cosa juntas las secciones del cuello superior, en la parte trasera central.
- Voltee en los márgenes de la costura, sobre los bodes del escote y de los hombros. Planche. Recorte el margen de la costura doblada, a 3/8”(1cm).

Modelo A:

- Sujete con alfileres la vista frontal y el cuello superior, al abrigo y a la parte de debajo del cuello. Cosa la abertura frontal y los bordes del cuello, estirando la parte de debajo del cuello y el frente, para ajustarlos entre las muescas.
- Voltee la vista al interior, volteando el cuello al lado derecho. Planche. **HAGA PUNTADA FALSA** a los bordes doblados, sobre las costuras del escote y de los hombros.

Modelo B:

- Sujete con alfileres la vista frontal y el cuello superior al abrigo y debajo del cuello. Cosa los bordes inferior, abertura frontal y del cuello, estirando debajo del cuello y el frente, para ajustarlos entre las muescas.
- Voltee la vista al interior, volteando el cuello al derecho. Planche. **HAGA PUNTADA FALSA** a los bordes doblados, sobre las costuras del escote y de los hombros.

COSTURAS DE LAS MANGAS Y LAS LATERALES

- DERECHO CON DERECHO**, sujete con alfileres la MANGA (5) al borde de la sisa, colocando el círculo grande en las costuras de los hombros. Hilvane. Cosa. Cosa de nuevo a 1/4”(6mm) a distancia del margen de la costura. Recorte cerca de la puntada. Planche la costura hacia la manga.
- Sujete con alfileres juntos la espalda y el frente en los lados; sujete con alfileres juntos los bordes de la manga. Cosa en una puntada continua. Cosa de nuevo la curva de debajo de los brazos, a lo largo de las puntadas previas, como se muestra.
- Voltee el dobladillo de la manga a 2”(5cm). Hilvane cerca del doblez. Recorte el dobladillo hasta lograr un ancho parejo. **TERMINE** el borde no terminado. Cosa el dobladillo en su lugar. Planche.

TERMINADO

Modelo A:

- Voltee el borde inferior de la vista al exterior y a lo largo de la costura. Cosa a través de la vista a través de 2”(5cm), por encima del borde no terminado. Recorte, como se muestra.
- Voltee la vista al interior, volteando el dobladillo hacia arriba. Hilvane cerca del doblez. Recorte el dobladillo hasta lograr un ancho parejo. **TERMINE** el borde no terminado. Cosa el dobladillo en su lugar, frunciendo la totalidad si lo considera necesario. Planche. Cosa la vista al dobladillo.
- En el exterior, sujete con alfileres el adorno flexible de trenza, a la abertura frontal y al borde inferior, terminando dentro de 2”(5cm), por encima de la marca del ojal superior, volteando un doblez a los extremos y doblando la totalidad en la esquina, como se muestra. Cosa cerca de ambos bordes largos **HAGA PUNTADA FALSA** a los extremos y las esquinas.

- Comenzando a aproximadamente 1-1/2”(3.8cm), por debajo del ojal superior y marcando sobre el frente, sujete con alfileres el adorno a la vista frontal y al cuello superior, volteando un doblez a los extremos, tal como se muestra. Cosa cerca de ambos bordes largos. **HAGA PUNTADA FALSA** a los extremos.
- Sujete con alfileres el adorno al borde inferior de la manga, volteando un doblez a los extremos hasta unir la costura. Cosa cerca de ambos bordes largos. **HAGA PUNTADA FALSA** a los extremos.
- Haga los ojales en el frente derecho sobre las marcas. Cosa los botones al frente izquierdo sobre las marcas.

Modelo B:

- Voltee el dobladillo a 2”(5cm). Hilvane cerca del doblez. Recorte el dobladillo hasta lograr un ancho parejo. **TERMINE** el borde no terminado. Cosa el dobladillo en su lugar, frunciendo la totalidad si lo considera necesario. Planche. Cosa la vista al dobladillo.
- En el interior, cosa la sección de los broches de bola, a la vista frontal derecha n los círculos grandes, como se muestra. Cruce el frente derecho sobre el izquierdo, casando los centros. Marque la posición de la sección del broche macho, sobre el frente izquierdo. Cosa los broches hembra en las marcas.