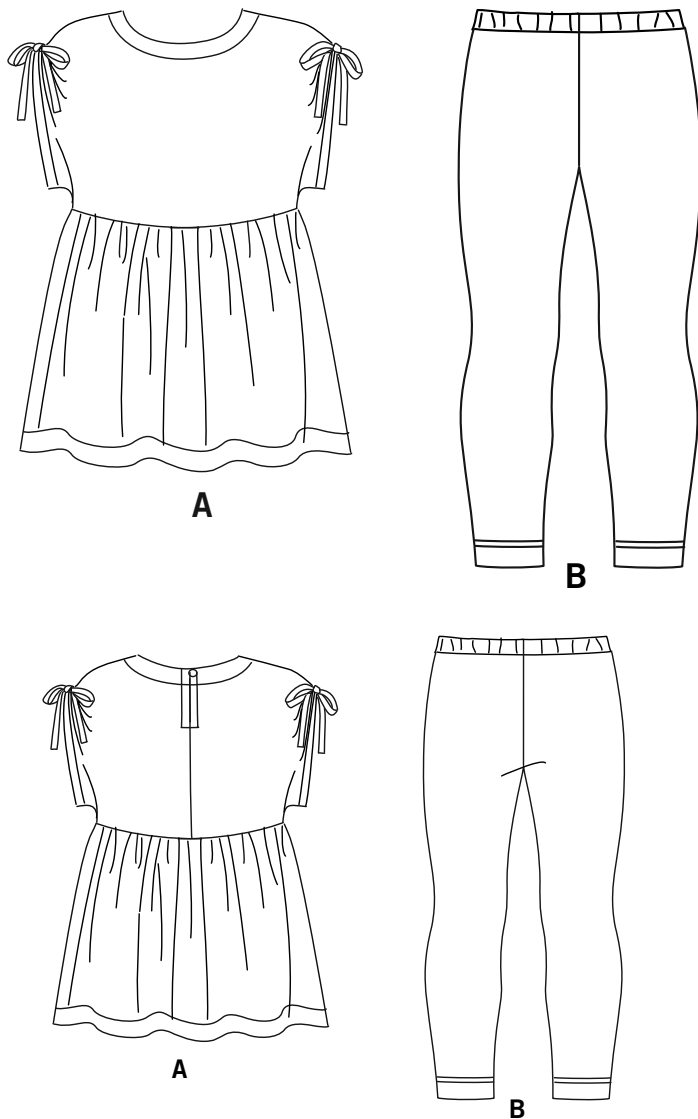


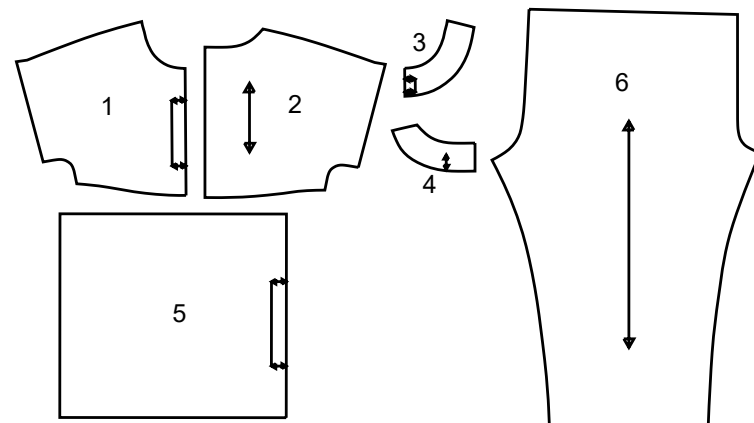
# NEWLOOK® N6761

www.simplicity.com info@simplicity.com 1-888-588-2700

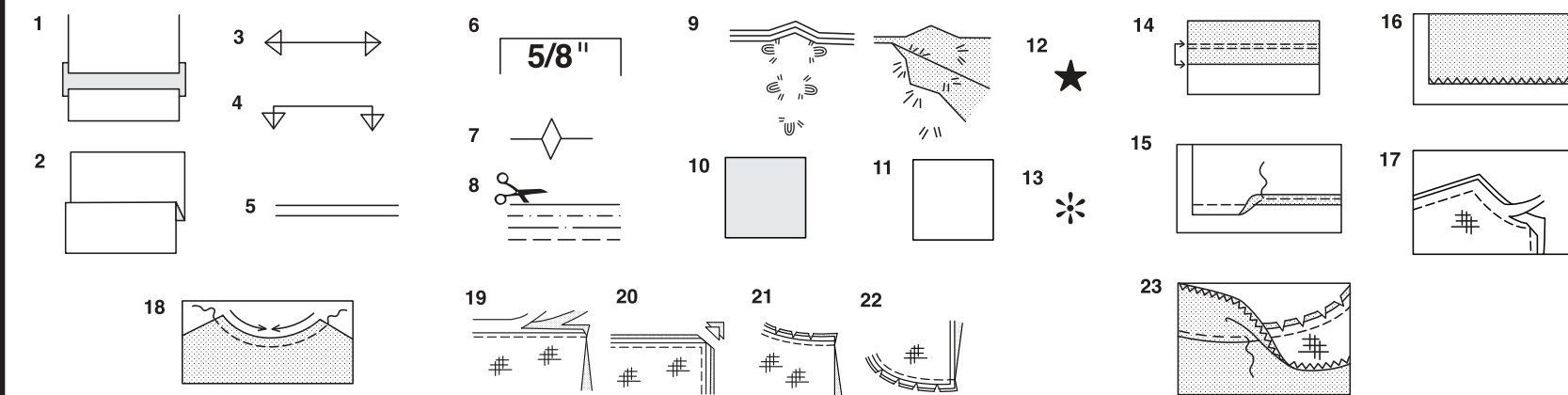
Thank you for purchasing this New Look pattern. We made every effort to provide you with a high quality product. Gracias por haber comprado este patrón de New Look. Hemos hecho todos los esfuerzos para ofrecerle un producto de alta calidad.



6 PIECES



- 1 BODICE FRONT-A
- 2 BODICE BACK-A
- 3 FRONT FACING-A
- 4 BACK FACING-A
- 5 SKIRT FRONT AND BACK-A
- 6 FRONT AND BACK-B



### How To Use Your Multi Size Pattern

#### First Prepare Your Pattern

Select the pattern pieces according to the view you are making.

This pattern is made to body measurements with ease allowed for comfort and style. If your body measurements differ from those on the pattern envelope adjust the pieces before placing them on the fabric.

Check your back neck to waist and dress length, if necessary, alter the pattern. Lengthening and shortening lines are indicated.

1. **TO LENGTHEN** : Cut pattern between printed lines and place paper underneath. Spread pattern the required amount and pin to paper.
2. **TO SHORTEN** : Fold at the printed lines to form a pleat half the amount to be shortened, ie 1/2" (1.3cm) deep to shorten 1" (2.5cm).

#### Study Your Pattern Markings

3. **STRAIGHT GRAIN** : Place an even distance from selvage or a straight thread.
4. **FOLD** : Place on fold of fabric.
5. **LENGTHENING AND SHORTENING LINES**.
6. **SEAM ALLOWANCE** : 5/8" (1.5cm) unless otherwise stated.
7. **NOTCHES** : Match notches.
8. **CUTTING LINES** : Multi patterns have different cutting lines for different sizes.
9. **TAILOR-TACKS** : With double thread make two loose stitches forming loop through fabric layers and pattern leaving long ends. Cut loop to remove pattern. Snip thread between fabric layers. Leave tufts.

### Cutting Layouts

#### Cutting Directions

FOR FOLDED AND DOUBLE LAYER FABRIC - Place fabric with right side inside and pin pattern on wrong side of fabric.

FOR SINGLE LAYER - Pin pattern on right side of fabric. NOTE: Pattern pieces may interlock more closely for smaller sizes. Cut notches out from cutting line.

BEFORE removing pattern from fabric, transfer all pattern markings using tailor tacks or dressmaking tracing paper.

10. **KEY**: pattern printed side down
11. **KEY**: pattern printed side up
12. **KEY**: Cut out all pieces except pieces that extend beyond folded fabric, then open out fabric and on RIGHT side of fabric, cut in positions as shown.
13. **KEY**: For with and without nap layouts ensure fabric is placed with nap or design running in same direction.

Before pinning to fabric, press tissue pattern with a warm dry iron to remove creases.

#### Sewing Directions

Fabric Key	Right Side	Wrong Side	Interfacing	Lining

Sew garment following **Sewing Directions**.

**PIN** or machine-baste seams matching notches.

**STITCH** 5/8" (1.5cm) seams unless otherwise stated.

**PRESS** seams open unless otherwise indicated, clipping when necessary so seams will lie flat.

14. **EASE-STITCH** or **GATHER** - Loosen needle tension slightly. With RIGHT side up, stitch 5/8" (1.5cm) from cut edge using a long stitch. Stitch again 1/4" (6mm) away in the seam allowance.

**EDGE FINISH** - Neaten raw edges of seams, hems and facings using one of the following methods.

15. Stitch 1/4" (6mm) from edge, turn under along stitching and stitch.
16. Zig-zag or overlock raw edges.

17. **INTERFACING** — Pin interfacing to WRONG side of fabric. Cut across corners that will be enclosed with seams. Machine-baste 1/2" (1.3cm) from cut edge. (Shown only on first illustration). Trim interfacing close to machine-basting. For FUSIBLE interfacing, follow manufacturer's directions.

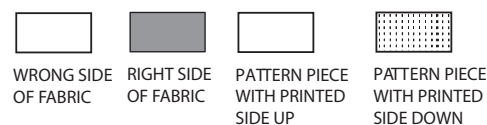
18. **STAY-STITCH** —Stitch 1/2" (1.3cm) from cut edge, in direction of arrows: (Shown only in the first illustration).

**LAYERING** — Trim seam allowance in layers.

19. Layer enclosed seams
20. Trim corners
21. Clip inner curves
22. Notch outer curves

23. **UNDERSTITCH** —Press facing away from garment; press seam toward facing. Facing side up, understitch close to seam through facing and seam allowances.

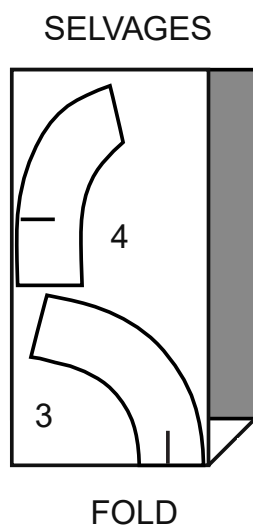
## Cutting Layouts



### A INTERFACING

USE PIECES 3 4

1 20" TO 25" (51CM TO 64CM)  
LIGHTWEIGHT FUSIBLE  
ALL SIZES

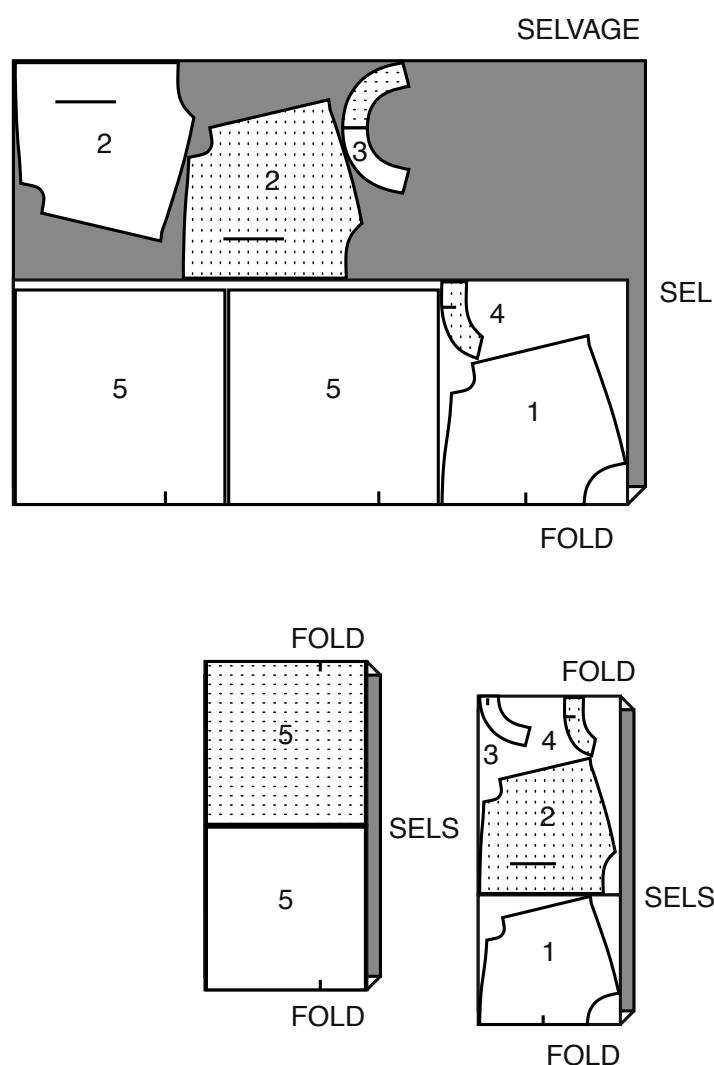


### A TOP

USE PIECES 1 2 3 4 5

2A 44"45" (115CM)  
WITH NAP  
ALL SIZES

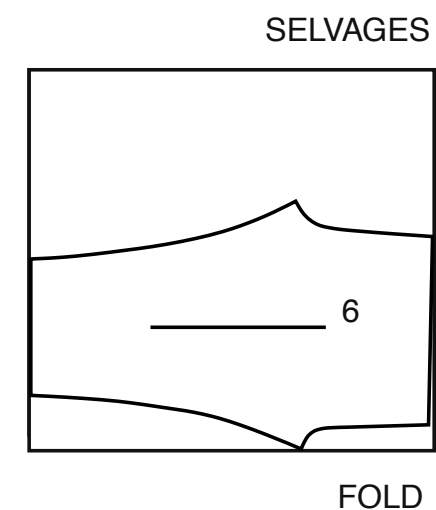
2B 58"60" (150CM)  
WITH NAP  
ALL SIZES



### B LEGGINGS - SIZED FOR STRETCH KNITS ONLY

USE PIECE 6

3 58"60" (150CM)  
WITH NAP  
ALL SIZES



## Español

### A ENTRETELA

USE LAS PIEZAS 3 4

1 20" A 25" (51CM A 64CM)  
LIGERA ADHESIVA  
TODAS LAS TALLAS

### A BLUSA

USE LAS PIEZAS 1 2 3 4 5

2A 44"45" (115CM)  
CON PELUSA  
TODAS LAS TALLAS

2B 58"60" (150CM)  
CON PELUSA  
TODAS LAS TALLAS

### B LEGGINGS - EN MALLAS ESTIRABLES SOLAMENTE

USE LA PIEZA 6

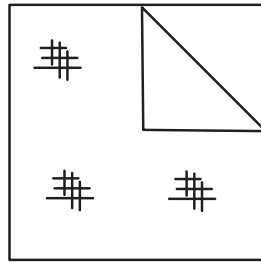
3 58"60" (150CM)  
CON PELUSA  
TODAS LAS TALLAS

SELVAGE(S)= ORILLA(S)  
FOLD= DOBLEZ  
SEL.(S)= ORILLA(S)

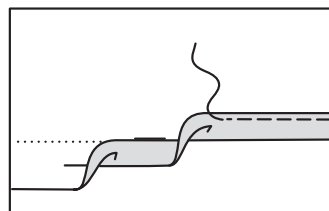
## SIMPLY THE BEST SEWING TECHNIQUES...

## FOR KNITS

- Use a ball point or stretch needle.
- Stretch knits need seams that are supple enough to “give” with the fabric. You can sew them with straight stitches (stretching the fabric slightly as you sew), narrow zig-zag stitches or one of the stretch stitches built into many conventional machines, or on your serger.
- Some knits require very little or no pressing while sewing. Use the appropriate temperature setting. Press lightly or use steam.
- Raw edges of hem and facings are left raw, unless using a serger.



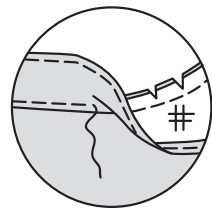
INTERFACING



NARROW HEM



STAY-STITCH



UNDERSTITCH

## GLOSSARY OF SEWING METHODS

Sewing procedures *ITALICIZED* in Sewing Directions are defined below.

**INTERFACING**- Pin interfacing to **WRONG** side of fabric. Fuse interfacing in place following manufacturer's directions.

**NARROW HEM**- Press up hem. To form narrow hem, tuck under raw edge to meet crease; press. Stitch hem in place.

**STAY-STITCH**- Stitch 1/2" (1.3cm) from cut edge in direction of arrows. This stitching stays in permanently to prevent stretching on curved edges. (Shown only in the first illustration).

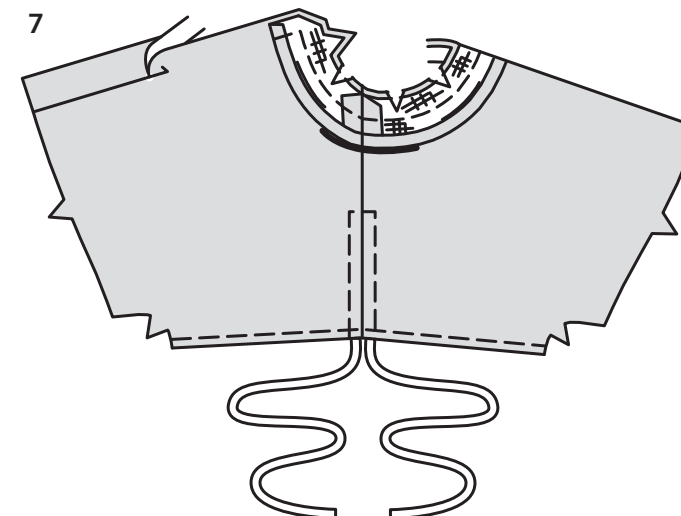
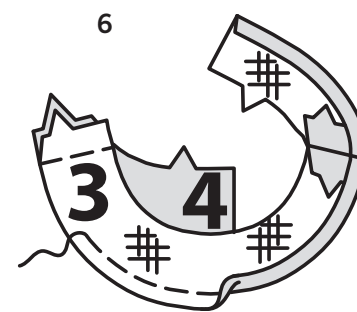
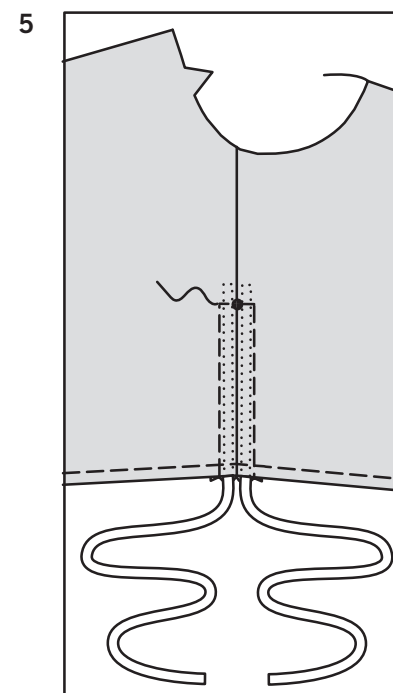
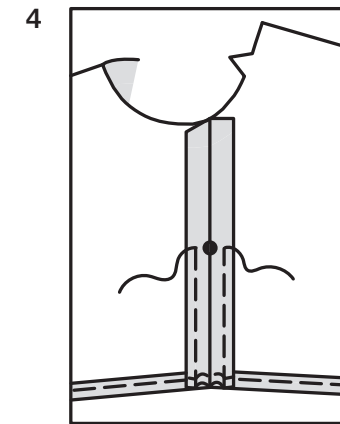
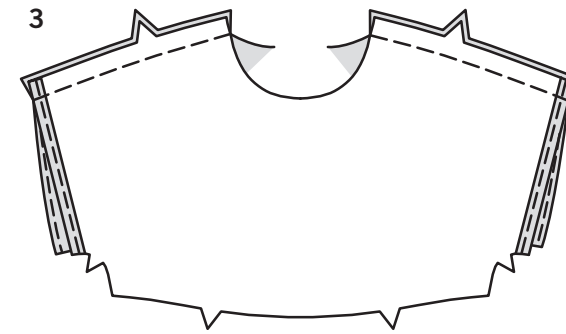
**UNDERSTITCH**- Press facing and seam away from garment, stitching through facing and seam allowances close to seam, as far as possible.

**PATTERN PIECES WILL BE IDENTIFIED BY NUMBERS THE FIRST TIME THEY ARE USED.**

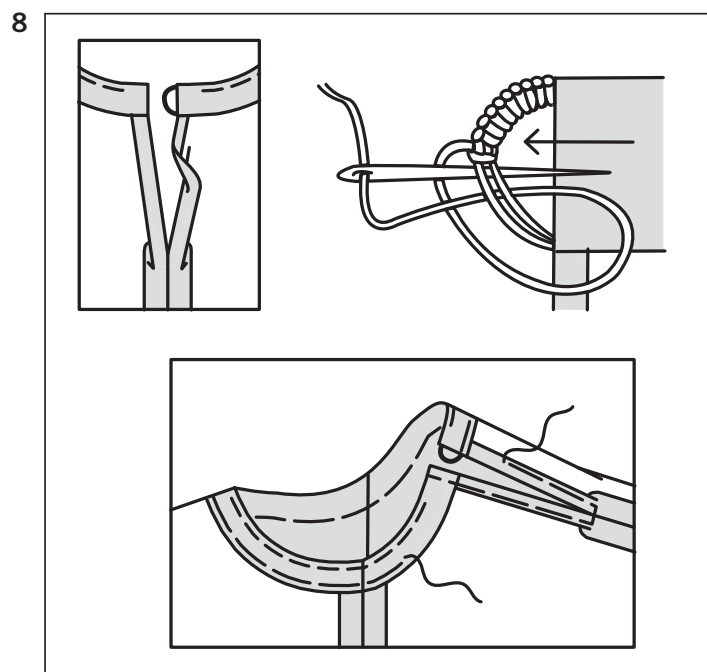
**STITCH SEAMS WITH RIGHT SIDES TOGETHER UNLESS OTHERWISE STATED.**

## TOP A

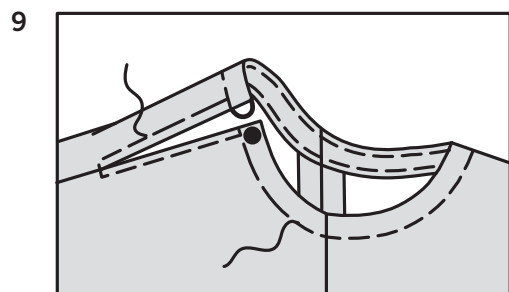
- 1. STAY-STITCH** neck edge of bodice front (1).  
**NARROW HEM** sleeve.
- 2. STAY-STITCH** neck edge of bodice back (2) sections.  
**NARROW HEM** sleeve.  
Pin back sections matching large dots. Stitch seam below large dot, back-stitching at large dot to reinforce seam.



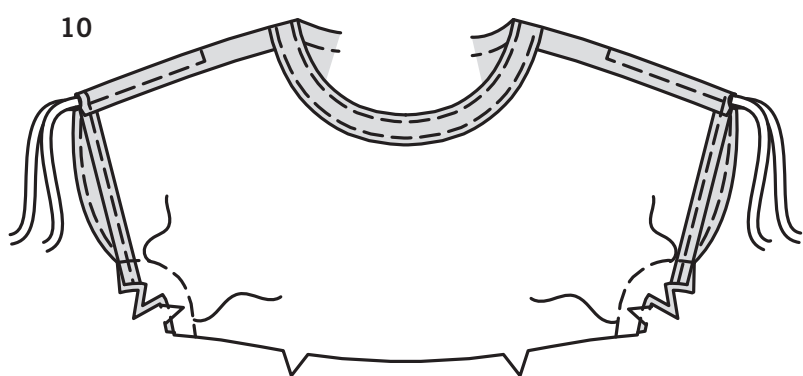
3. Stitch bodice front to bodice back at shoulder seams.
4. To make casings, stitch 3/8" (1cm) on each side of shoulder seam from outer edge to small dot, back-stitching to reinforce.
5. Cut twill tape or ribbon in half to be used as drawstrings. On **OUTSIDE**, insert drawstrings into opening at hemmed edged, extending ends 5/8" (1.5cm) beyond small dots; pin. Stitch through small dot between casing stitches, catching in drawstrings.
6. Apply **INTERFACING** to front facing (3) and back facing (4) sections.  
Stitch shoulder seams of facing sections.  
To finish unnotched edge, stitch 1/4" (6mm) from edge, turn under along stitching and press OR zig-zag over edge OR overlock/serge over edge with blade up.
7. With **RIGHT** sides together, pin facing to neck edge, matching centers and shoulder seams. Stitch neck and back edges. Trim seam and corners. Clip curves.  
**UNDERSTITCH** neck edge of facing.



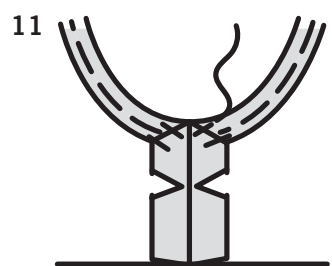
**8.** Turn facing to INSIDE.  
Press, pressing under 5/8" (1.5cm) on slit opening edges. Press under 1/4" (6mm) on raw edge.  
Make a thread loop on LEFT back opening large enough to fit button, as shown. Baste opening close to inner pressed edges, squaring stitches below opening.  
Hand-baste close to pressed edge of facing OR 1/4" (6mm) from zig-zagged or overlocked edge.



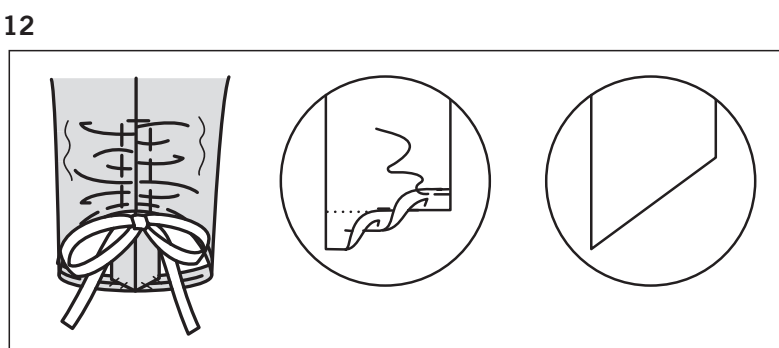
**9.** On OUTSIDE, top-stitch as basted. Remove basting.  
Sew button to RIGHT back opening.



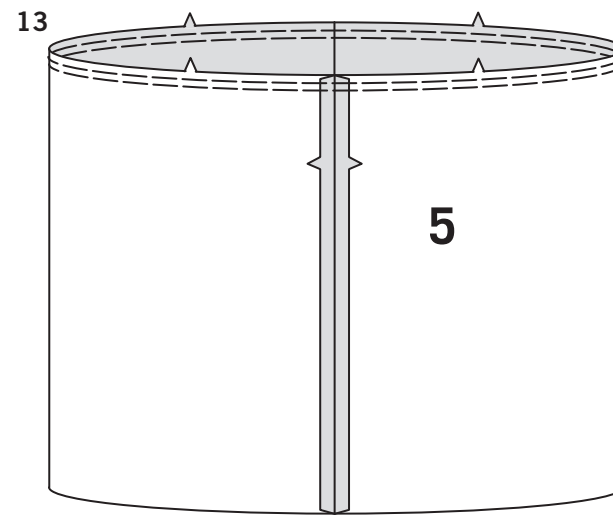
**10.** Stitch front and back bodice sections together at entire underarm seam.  
Stitch again along curve to reinforce seam.  
Clip underarm curves where necessary.



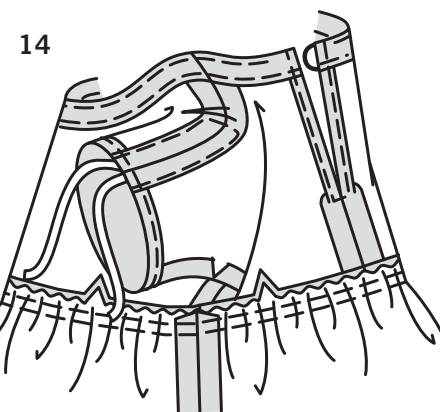
**11.** Turn ends of underarm seam allowances under at an angle, as shown. Hand-tack to hem.



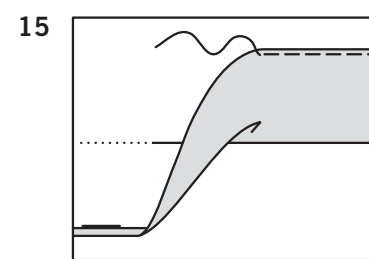
**12.** Gather casing along drawstrings and fasten free ends in a bow.  
For twill tape drawstrings- Trim ends at desired length, adding 1/2" (1.3cm) for finishing. Turn under ends 1/4" (6mm) twice; stitch.  
For ribbon drawstrings - Trim ends at an angle at desired length.



**13.** Stitch skirt front and back (5) sections together at side seams.  
To gather upper edge of skirt, stitch along seam line and 1/4" (6mm) INSIDE seam line, using a long machine-stitch.

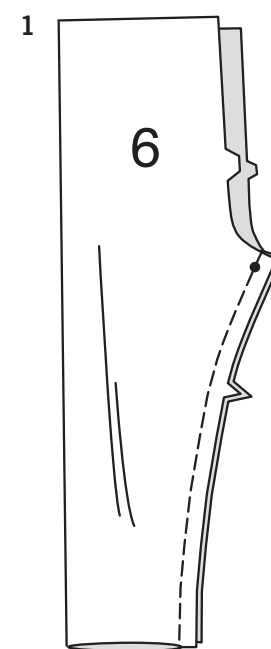


**14.** Pin skirt to lower edge of bodice, matching centers and side seams. Pull up gathering stitches to fit; baste. Stitch.  
Press seam toward bodice.

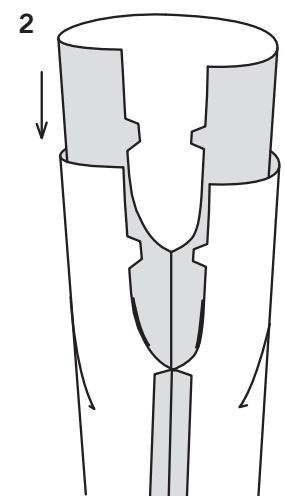


**15.** Press up hem on lower edge.  
Press under 1/4" (6mm) on raw edge.  
Stitch hem in place.

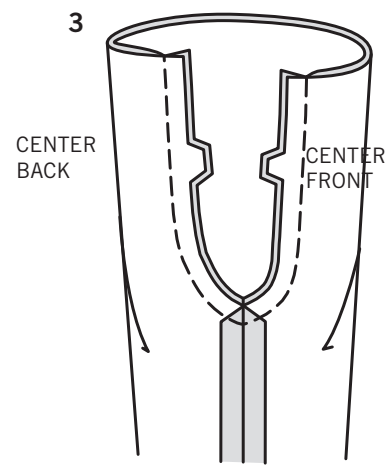
## LEGGINGS B



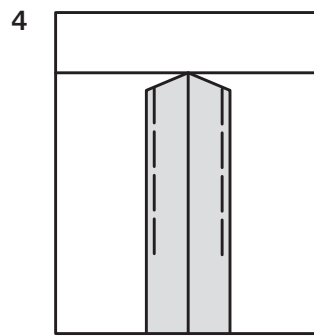
**1.** Pin front and back (6) sections together at inner legs, matching small dots and notches. Stitch, stretching back to fit.



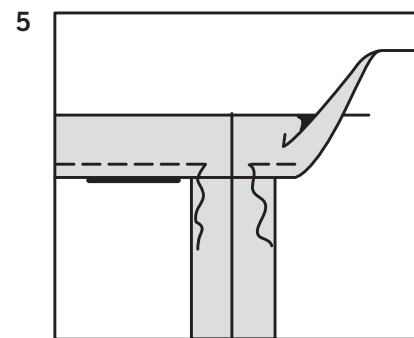
**2.** With RIGHT sides together, insert one leg INSIDE the other.



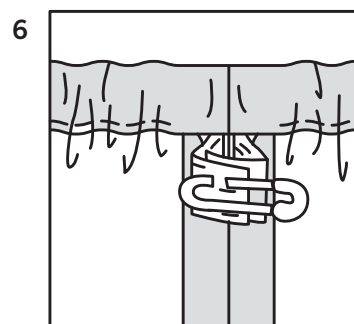
3. Pin center seam, matching inner leg seams and notches. Stitch. To reinforce seam, stitch again over first stitching.



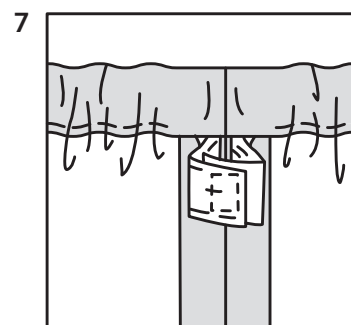
4. To keep elastic from getting stuck in the seam allowances as it's inserted, use machine-basting to anchor them to the garment within casing area.



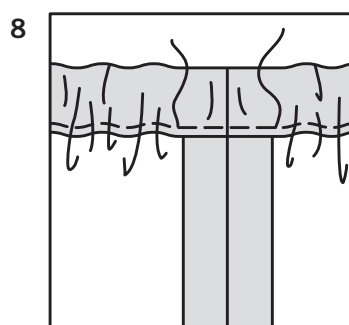
5. Press 1" (2.5cm) on upper edge to INSIDE, forming a casing. Stitch 1/4" (6mm) on raw edge, leaving an opening to insert elastic.



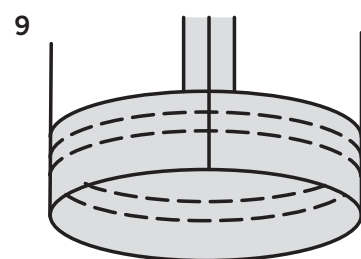
6. Cut a piece of elastic to fit waist, plus 1" (2.5cm). Insert elastic through casing. Overlap ends and hold with a safety pin. Try on pants and adjust to fit.



7. Stitch ends of elastic together securely.



8. Stitch opening closed. Distribute fullness evenly.  
**TIP-** To secure elastic so it won't twist in wearing, stitch through all thicknesses of casing in the groove of each seam.



9. Press up hem. Stitch close to raw edge and 1/4" (6mm) below first stitching.  
**TIP-** It's easier to stitch a hem in a circle if you keep the RIGHT side of the leg against the machine, with the INSIDE facing you and the needle INSIDE the circle.

## BLUSA A

1. **HAGA PUNTADA DE SOSTEN** al borde del escote frontal del corpiño (1). Hacer un **DOBLADILLO ANGOSTO** a la manga.

2. **HAGA PUNTADA DE SOSTEN** al borde del escote de las secciones traseras del corpiño (2). Hacer un **DOBLADILLO ANGOSTO** a la manga. Sujete con alfileres las secciones traseras, casando los puntos grandes. Cosa la costura por debajo del punto grande, retrocediendo la puntada y cosiendo en el punto grande, para reforzar la costura.

3. Cosa el frente a la espalda del corpiño, en las costuras de los hombros.

4. Para hacer las jaretas, cosa a 3/8" (1cm) sobre cada lado de la costura de los hombros, desde el borde exterior hasta el punto pequeño, retrocediendo la puntada y cosiendo para reforzar.

5. Corte cinta de sarga o cinta a la mitad, para ser usada como un cordón. En el EXTERIOR, inserte el cordón en la abertura localizada en el borde dobladillado, extendiendo los extremos a 5/8" (1cm), más allá de los puntos pequeños; sujete con alfileres. Cosa a través del punto pequeño, entre las puntadas de la jareta, agarrando el cordón.

6. Aplique **ENTRETELA** a la sección de la vista frontal (3) y de la espalda (4). Cosa las costuras de los hombros de las secciones de la vista. Para terminar el borde sin muescas, cosa a 1/4" (6mm) del borde, voltee un dobléz a lo largo de la puntada y cosa, O haga puntada de zig-zag sobre el borde O puntada overlock/sobrehilada sobre el borde, con la cuchilla hacia arriba.

7. DERECHO CON DERECHO, sujete con alfileres la vista al borde del escote, casando las costuras centrales y de los hombros. Cosa los bordes del escote y de la parte trasera. Recorte la costura y las esquinas. Haga cortes a lo largo de las curvas. **HAGA PUNTADA OCULTA** al borde del escote de la vista.

8. Voltee la vista al INTERIOR. Planche, planchando un dobléz de 5/8" (1.5cm), sobre los bordes abiertos. Planche un dobléz de 1/4" (6mm) sobre el borde no terminado. Haga una presilla en hilo sobre la abertura trasera IZQUIERDA, lo suficientemente grande para ajustar el botón, como se muestra. Hilvane la abertura cerca de los bordes doblados interiores, girando las costuras por debajo de la abertura. Hilvane a mano la abertura, cerca del borde doblado de la vista O a 1/4" (6mm), de la puntada zigzagueada o de la puntada overlock al borde.

9. En el EXTERIOR, haga puntada de adorno como hilvanado. Retire el hilvanado. Cosa el botón a la abertura trasera DERECHA.

10. Cosa conjuntamente las secciones frontal y de la espalda del corpiño, en la costura de debajo de los brazos. Cosa de nuevo a lo largo de las curvas, para reforzar la costura. Haga cortes a las curvas de debajo de los brazos, donde se considere necesario.

11. Voltee un dobléz a los extremos de los márgenes de la costura de debajo de los brazos, en un ángulo, como se muestra. Cosa a mano al dobladillo.

12. Frunza la jareta a lo largo del cordón y ate los extremos libres en un moño. Para el cordón de cinta de sarga. Recorte los extremos en el largo que sea requerido, adicionando 1/2" (1.3cm) para terminarlo. Voltee un dobléz a los extremos de 1/4" (6mm) en dos ocasiones; cosa. Para el cordón de cinta – Recorte los extremos en un ángulo recto, en el largo que sea requerido.

13. Cosa conjuntamente las secciones de la falda frontal y trasera (5), en las costuras laterales. Para fruncir el borde superior de la falda, cosa a lo largo de la línea de la costura y a 1/4" (6mm), al INTERIOR de la línea de la costura, usando una puntada larga de la máquina.

14. Sujete con alfileres la falda al borde inferior del corpiño, casando las costuras centrales y las laterales. Hale de las costuras fruncidas para ajustarlas; hilvane. Cosa. Planche la costura hacia el corpiño.

15. Planche hacia arriba el dobladillo sobre el borde inferior. Planche un dobléz de 1/4" (6mm) sobre el borde no terminado. Cosa el dobladillo en su lugar.

## LEGGINGS B

1. Sujete con alfileres conjuntamente las secciones frontal y trasera (6), a través de las piernas interiores, casando los puntos pequeños y las muescas. Cosa, estirando hacia atrás para ajustar.

2. DERECHO CON DERECHO, inserte una pierna al INTERIOR de la otra.

3. Sujete con alfileres la costura central, casando las costuras interiores de la pierna y las muescas. Cosa. Para reforzar la costura, cosa de nuevo sobre la puntada previa.

4. Para prevenir que el elástico insertado, quede atrapado en los márgenes de la costura, utilice un hilvanado a máquina para sujetarlo a la prenda, dentro del área de la jareta.

5. Planche a 1" (2.5cm) sobre el borde superior al INTERIOR, formando una jareta. Cosa a 1/4" (6mm) sobre el borde no terminado, dejando una abertura para insertar el elástico.

6. Corte un pedazo de elástico para ajustar la cintura, adicionando 1" (2.5cm). Inserte el elástico en la jareta. Cruce los extremos y sosténgalos con un gancho de seguridad. Pruébese los pantalones y ajústelos a la medida.

7. Cosa firmes y juntos los extremos del elástico.

8. Cosa para cerrar la abertura. Distribuya uniformemente la amplitud.  
**CONSEJO** – Para prevenir que el elástico no se torcerá con el uso, cosa a través de todos los grosores de la jareta, en la ranura de cada costura.

9. Planche hacia arriba el dobladillo. Cosa cerca del borde no terminado, a 1/4" (6mm) por debajo de la puntada previa.  
**CONSEJO** – Se facilita coser un dobladillo en un círculo, si mantiene el lado DERECHO de la pierna contra la máquina, con el INTERIOR hacia usted y la aguja, al INTERIOR del círculo.