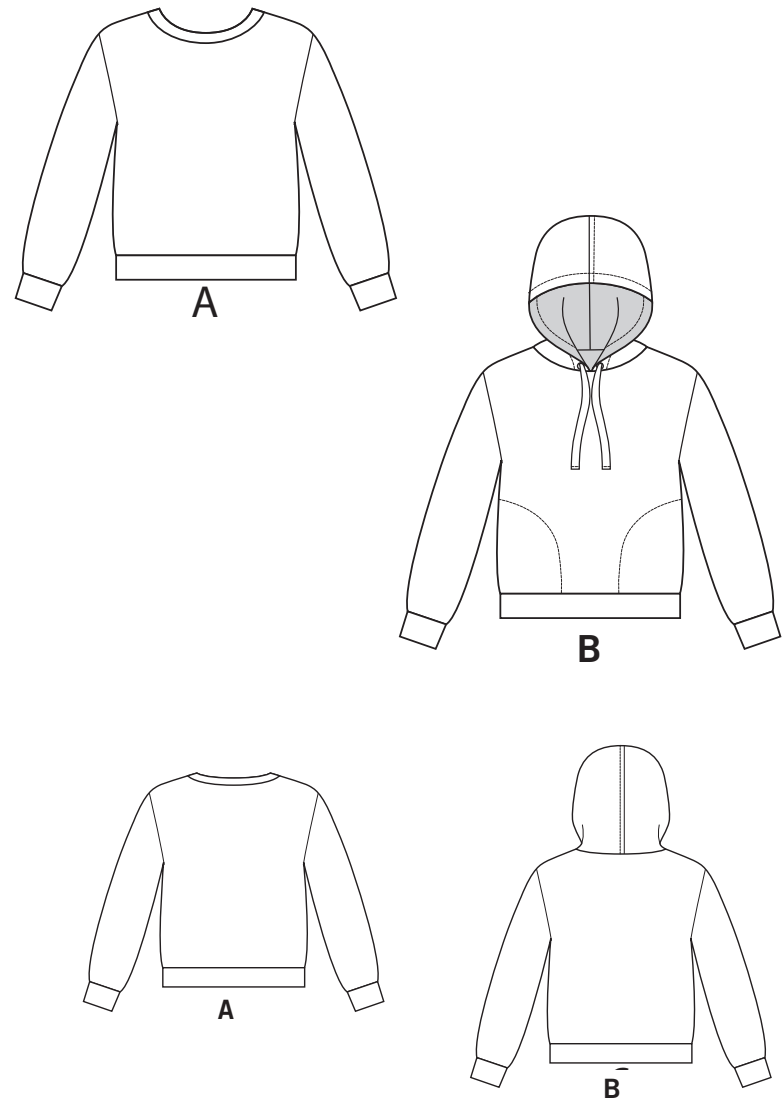


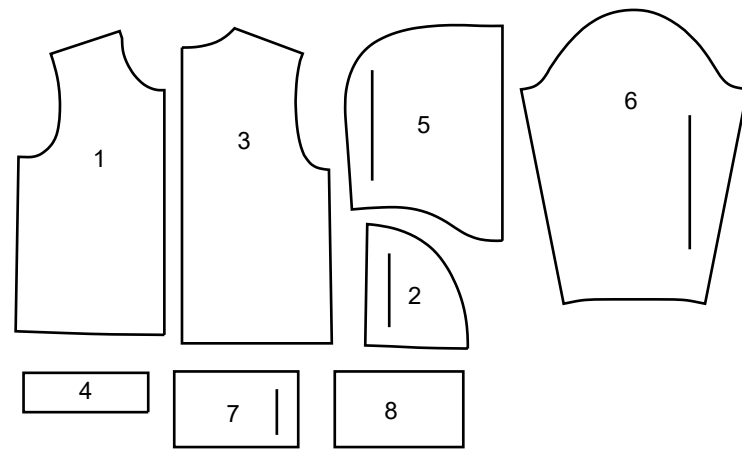
NEW LOOK® N6759

www.simplicity.com info@simplicity.com 1-888-588-2700

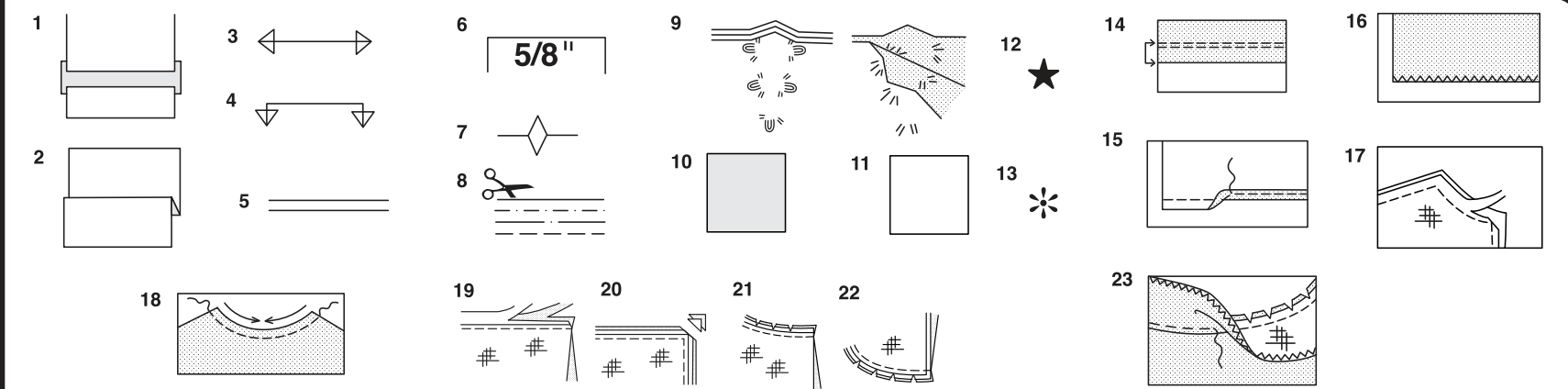
Thank you for purchasing this New Look pattern. We made every effort to provide you with a high quality product. Gracias por haber comprado este patrón de New Look. Hemos hecho todos los esfuerzos para ofrecerle un producto de alta calidad.



8 PIECES



- 1 FRONT-A,B
- 2 POCKET-B
- 3 BACK-A,B
- 4 NECKBAND-A
- 5 HOOD-B
- 6 SLEEVE-A,B
- 7 SLEEVE BAND-A,B
- 8 HEM BAND-A,B



How To Use Your Multi Size Pattern

First Prepare Your Pattern

Select the pattern pieces according to the view you are making.

This pattern is made to body measurements with ease allowed for comfort and style. If your body measurements differ from those on the pattern envelope adjust the pieces before placing them on the fabric.

Check your back neck to waist and dress length, if necessary, alter the pattern. Lengthening and shortening lines are indicated.

1. **TO LENGTHEN** : Cut pattern between printed lines and place paper underneath. Spread pattern the required amount and pin to paper.
2. **TO SHORTEN** : Fold at the printed lines to form a pleat half the amount to be shortened, ie 1/2" (1.3cm) deep to shorten 1" (2.5cm).

Study Your Pattern Markings

3. **STRAIGHT GRAIN** : Place an even distance from selvage or a straight thread.
4. **FOLD** : Place on fold of fabric.
5. **LENGTHENING AND SHORTENING LINES.**
6. **SEAM ALLOWANCE** : 5/8" (1.5cm) unless otherwise stated.
7. **NOTCHES** : Match notches.
8. **CUTTING LINES** : Multi patterns have different cutting lines for different sizes.
9. **TAILOR-TACKS** : With double thread make two loose stitches forming loop through fabric layers and pattern leaving long ends. Cut loop to remove pattern. Snip thread between fabric layers. Leave tufts.

Cutting Layouts

Cutting Directions

FOR FOLDED AND DOUBLE LAYER FABRIC - Place fabric with right side inside and pin pattern on wrong side of fabric.

FOR SINGLE LAYER - Pin pattern on right side of fabric. NOTE: Pattern pieces may interlock more closely for smaller sizes. Cut notches out from cutting line.

BEFORE removing pattern from fabric, transfer all pattern markings using tailor tacks or dressmaking tracing paper.

10. **KEY:** pattern printed side down
11. **KEY:** pattern printed side up
12. **KEY:** Cut out all pieces except pieces that extend beyond folded fabric, then open out fabric and on RIGHT side of fabric, cut in positions as shown.
13. **KEY:** For with and without nap layouts ensure fabric is placed with nap or design running in same direction.

Before pinning to fabric, press tissue pattern with a warm dry iron to remove creases.

Sewing Directions

Fabric Key	Right Side	Wrong Side	Interfacing	Lining

Sew garment following **Sewing Directions.**

PIN or machine-baste seams matching notches.

STITCH 5/8" (1.5cm) seams unless otherwise stated.

PRESS seams open unless otherwise indicated, clipping when necessary so seams will lie flat.

14. **EASE-STITCH** or **GATHER** - Loosen needle tension slightly. With RIGHT side up, stitch 5/8" (1.5cm) from cut edge using a long stitch. Stitch again 1/4" (6mm) away in the seam allowance.

EDGE FINISH - Neaten raw edges of seams, hems and facings using one of the following methods.

15. Stitch 1/4" (6mm) from edge, turn under along stitching and stitch.
16. Zig-zag or overlock raw edges.

17. **INTERFACING** — Pin interfacing to WRONG side of fabric. Cut across corners that will be enclosed with seams. Machine-baste 1/2" (1.3cm) from cut edge. (Shown only on first illustration). Trim interfacing close to machine-basting. For FUSIBLE interfacing, follow manufacturer's directions.

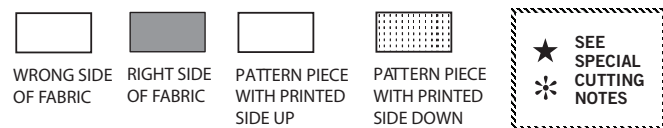
18. **STAY-STITCH** —Stitch 1/2" (1.3cm) from cut edge, in direction of arrows: (Shown only in the first illustration).

LAYERING — Trim seam allowance in layers.

19. Layer enclosed seams
20. Trim corners
21. Clip inner curves
22. Notch outer curves

23. **UNDERSTITCH** —Press facing away from garment; press seam toward facing. Facing side up, understitch close to seam through facing and seam allowances.

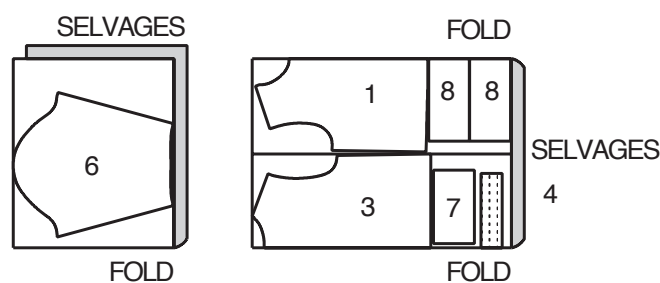
Cutting Layouts



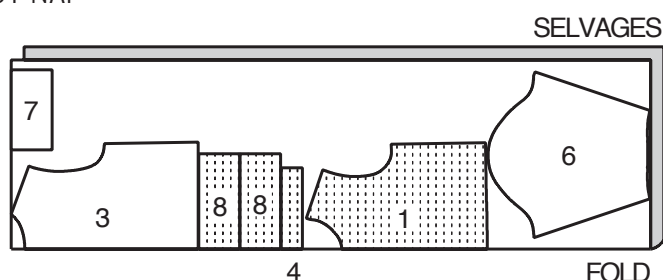
TOP A

USE PIECES 1 3 4 6 7 8

1A 60" (150CM) WITH OR WITHOUT NAP SIZES S M L XL



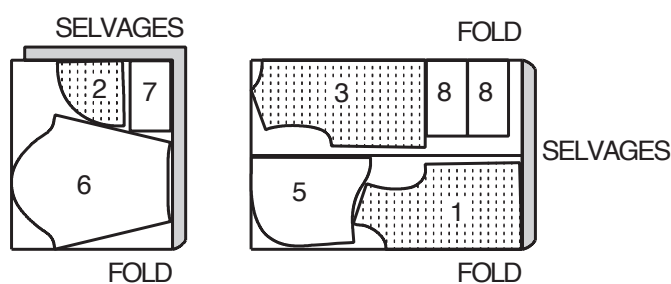
1B 60" (150CM) WITH OR WITHOUT NAP SIZE XXL



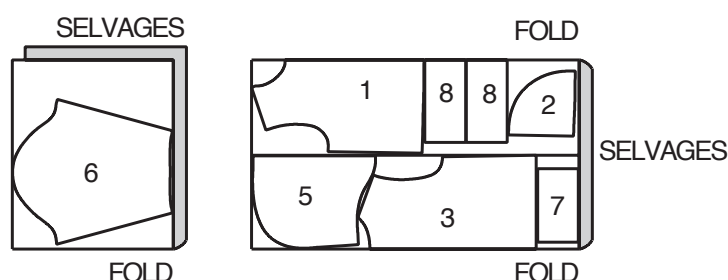
TOP B

USE PIECES 1 2 3 5 6 7 8

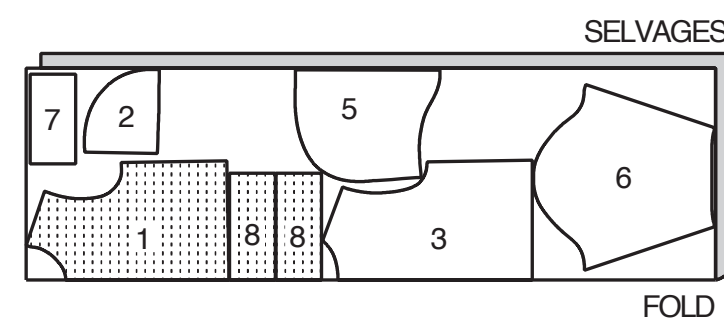
2A 60" (150CM) WITH OR WITHOUT NAP SIZES S M L



2B 60" (150CM) WITH OR WITHOUT NAP SIZE XL



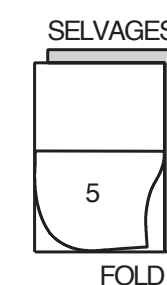
2C 60" (150CM) WITH OR WITHOUT NAP SIZE XXL



CONTRAST B

USE PIECE 5

3 60" (150CM) WITH OR WITHOUT NAP ALL SIZES



Español

BLUSA A USE LAS PIEZAS 1 3 4 6 7 8

1A 60" (150CM) CON O SIN PELUSA TALLAS P M G XG

1B 60" (150CM) CON O SIN PELUSA TALLA XXG

BLUSA B USE LAS PIEZAS 1 2 3 5 6 7 8

2A 60" (150CM) CON O SIN PELUSA TALLAS P M G

2B 60" (150CM) CON O SIN PELUSA TALLA XG

2C 60" (150CM) CON O SIN PELUSA TALLA XXG

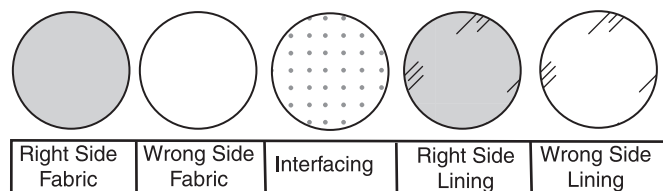
CONTRASTE B USE LA PIEZA 5

3 60" (150CM) CON O SIN PELUSA TODAS LAS TALLAS

SELVAGES= ORILLAS FOLD= DOBLEZ

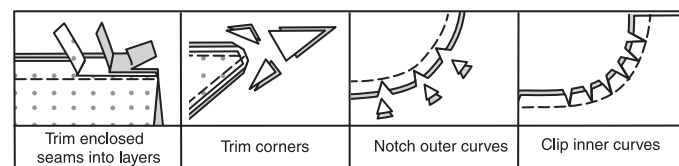
SEWING INFORMATION

FABRIC KEY



SEAM ALLOWANCES

Use 5/8" (1.5cm) seam allowances unless otherwise indicated.



PIN AND FIT

Pin or baste seams, **RIGHT SIDE TOGETHER**, matching notches. Fit garment before stitching major seams.

PRESS

Press seam allowances flat; then open unless otherwise stated. Clip where necessary so they lie flat.

GLOSSARY

Sewing terms appearing in **BOLD TYPE** in Sewing Instructions are explained below.

EASESTITCH - Stitch along seamline, using long machine stitches. Pull thread ends when adjusting to fit.

NOTE: For sleeve caps, make a second row of long machine stitches 1/4" (6mm) away in seam allowance. for more control.

EDGESEW - Stitch close to finished edge or seam.

NARROW HEM - Turn in hem; press, easing in fullness if necessary. Open out hem. Turn in again so raw edge is along crease; press. Turn in along crease; stitch.

REINFORCE - Stitch along seamline where indicated in sewing instructions, using small machine stitches.

TOPSTITCH - On outside, stitch 1/4" (6mm) from edge, seam or previous stitching, using presser foot as guide, or stitch where indicated in instructions.

SEWING DIRECTIONS

TOP A, B

NOTE: The first view mentioned will be illustrated, unless otherwise indicated.

NOTE: For knits, stretch fabric evenly in front and back of needle while stitching.

VIEW B

1. **REINFORCE** side edge of **FRONT** (1) through large circles. Clip diagonally to large circles.

2. Make 5/8" (1.5cm) **NARROW HEM** at side edge between clips.

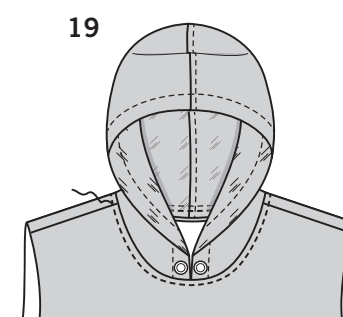
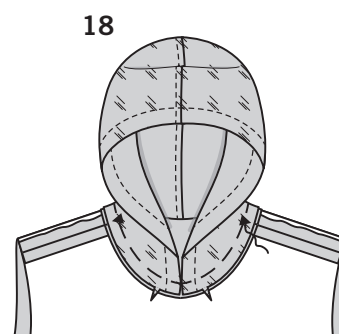
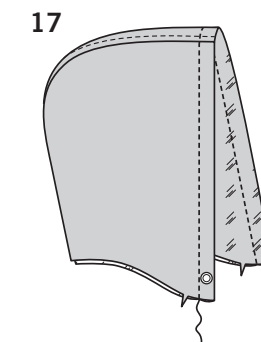
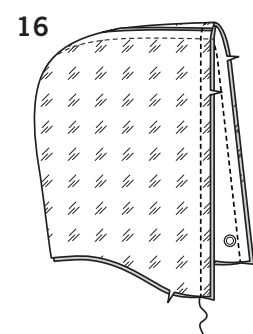
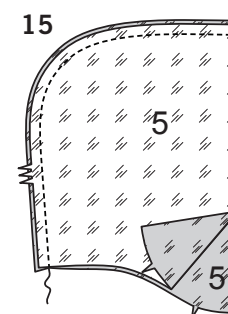
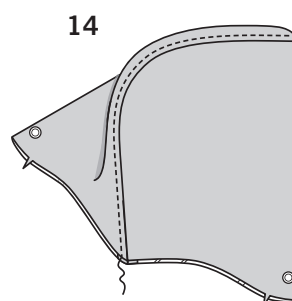
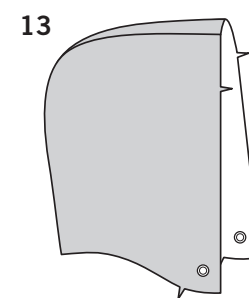
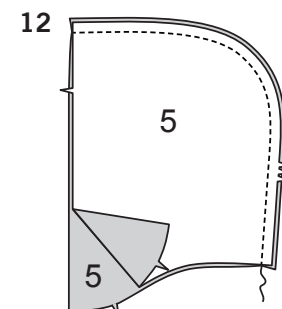
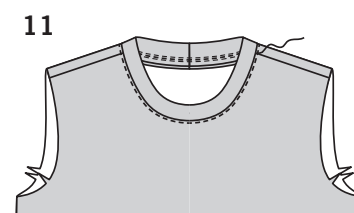
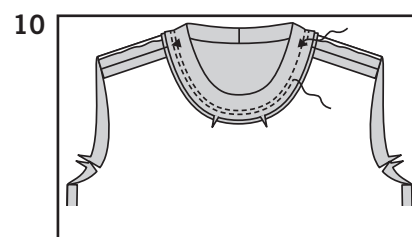
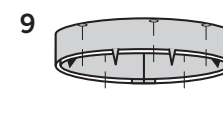
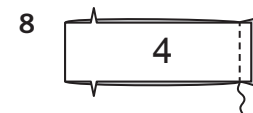
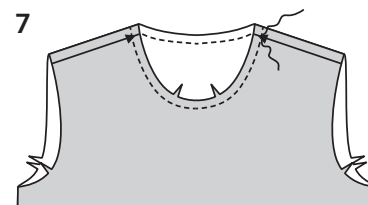
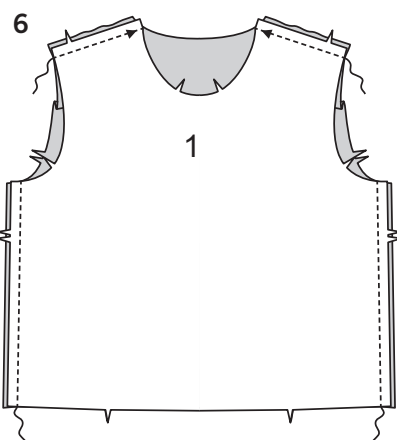
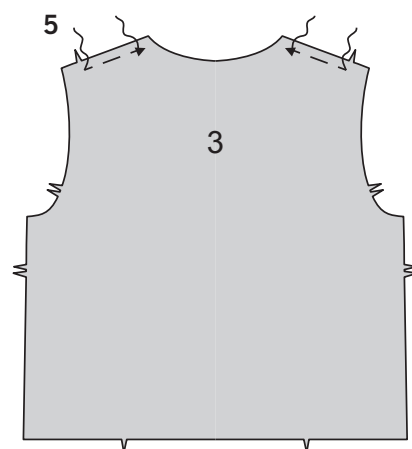
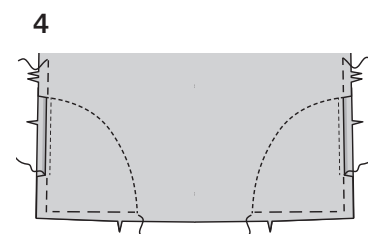
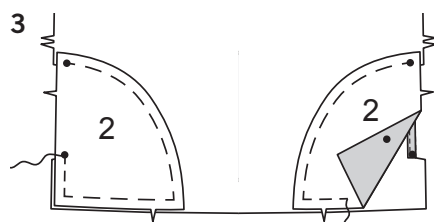
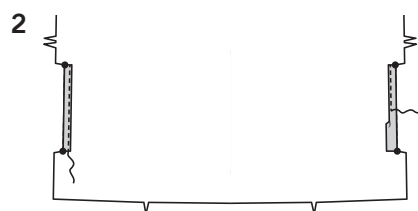
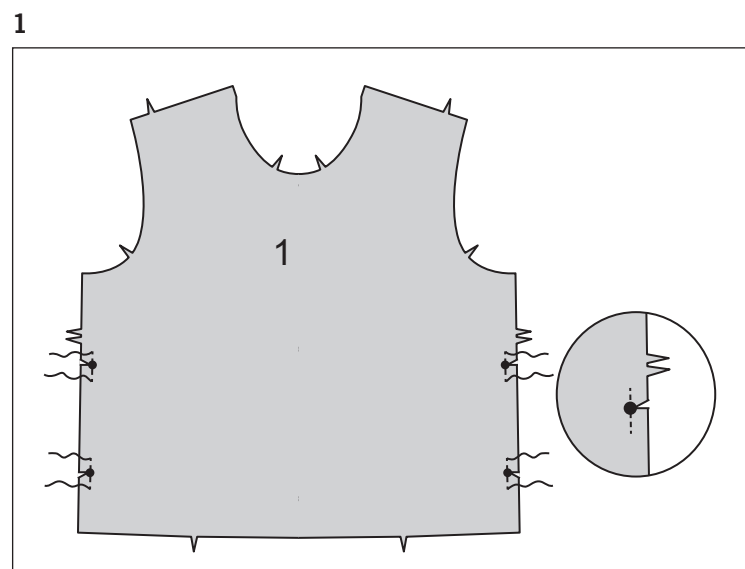
3. Pin right side of **POCKET** (2) to wrong side of front, matching symbols. Baste along seamlines.

4. Stitch front along stitching line. Baste raw edges together.

VIEWS A, B

5. **EASESTITCH** shoulder edges of **BACK** (3) between triangles and notches, as shown.

6. Pin back to **FRONT** (1) at shoulders and sides. Adjust ease; baste. Stitch.



NECK EDGE

7. To prevent neck edge from stretching, stitch along seamline.

VIEW A

8. Stitch ends of **NECK BAND** (4) together.

9. With wrong sides together, fold neck band along foldline; press. Pin raw edges together.

10. Pin neck band to neck edge of top, matching centers and symbols. Stitch, stretching band to fit. Stitch again 1/4" (6mm) away in seam allowance. Trim close to stitching. Press seam toward top.

11. Optional: **EDGESEW** top close to neck edge.

VIEWS B

12. Stitch **HOOD** (5) sections together at center back. Press seam toward left side.

13. Apply grommets to hood at large circles, as shown, following manufacturer's instructions.

14. **TOPSTITCH** left side of hood from seam, as shown.

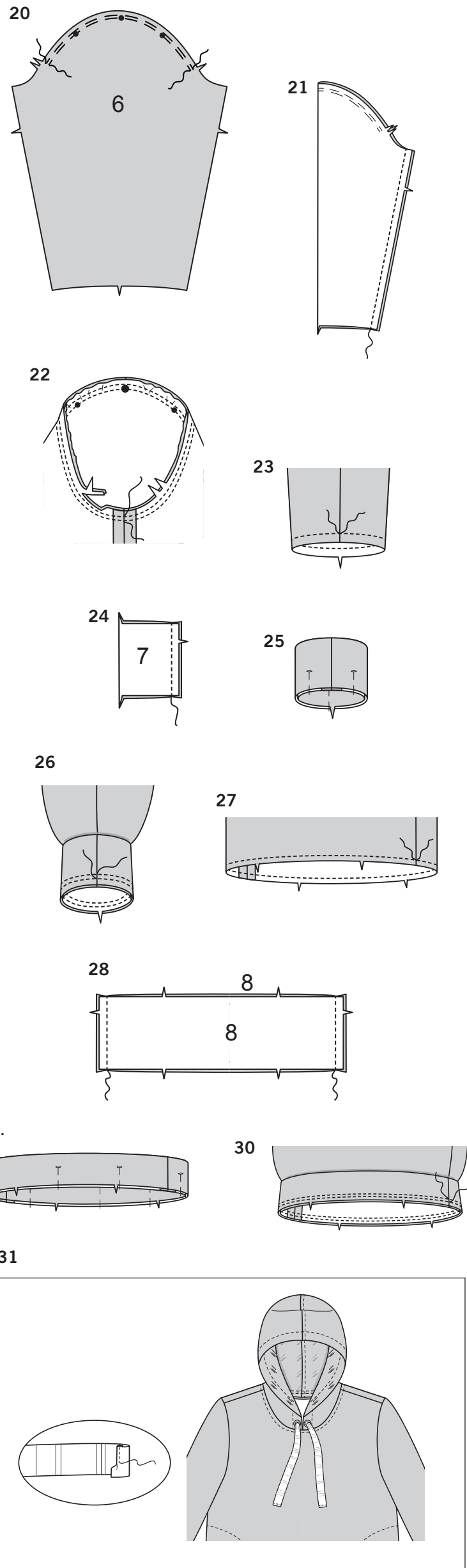
15. Stitch hood **LINING** (5) sections together at center back. Press seam toward left side. **TOPSTITCH** left side of hood from seam.

16. With right sides together, pin lining to hood; stitch.

17. **TOPSTITCH** hood 1" (2.5cm) from front edge, as shown.

18. Pin hood to neck edge of top, matching centers and symbols; baste. Stitch. Press seam toward top.

19. **TOPSTITCH** top along neck edge.



VIEW A, B

20. EASESTITCH upper edge of SLEEVE (6) between notches.

21. Stitch sleeve seam.

22. With right sides together, pin sleeve into armhole edge, placing large circle at shoulder seam; baste. Stitch. Stitch again 1/4" (6mm) away in seam allowance. Trim close to stitching. Press seam toward sleeve.

FINISHING

23. To prevent lower edge of sleeve from stretching, stitch along seamline.

24. Stitch ends of SLEEVE BAND (7) together.

25. With wrong sides together, fold sleeve band along foldline; press lightly. Pin raw edges together.

26. Pin sleeve band to lower edge of sleeve, matching seams. Stitch, stretching band to fit. Stitch again 1/4" (6mm) away in seam allowance. Trim close to stitching. Press seam toward sleeve.

27. To prevent lower edge of top from stretching, stitch along seamline.

28. Stitch ends of HEM BAND (8) together.

29. With wrong sides together, fold band along foldline; press lightly. Pin raw edges together.

30. Pin hem band to lower edge of top, matching centers. Stitch, stretching band to fit. Stitch again 1/4" (6mm) away in seam allowance. Trim close to stitching. Press seam toward top.

VIEWS B

31. For drawstring, make 5/8" (1.5cm) **NARROW HEM** on ends of twill tape. Insert twill tape through grommet openings, extending ends evenly.

INSTRUCCIONES DE COSTURAS

BLUSAS A, B

NOTA: La primera vista mencionada será ilustrativa, a menos que se determine algo diferente.

NOTA: Para tejidos, estire uniformemente la tela en el frente y la parte trasera de la aguja, mientras este cosiendo.

MODELO B

1. Refuerce el borde lateral **FRONTAL** (1), a través de los círculos grandes. Haga cortes diagonales hasta los círculos grandes.

2. Haga un **DOBLADILLO ANGOSTO** de 5/8" (1.5cm), en el borde lateral entre los cortes.

3. Sujete con alfileres el lado derecho del **BOLSILLO** (2) al **REVES** del frente, casando las marcas. Hilvane a lo largo de las líneas de la costura.

4. Cosa el frente a lo largo de la línea de la puntada. Hilvane conjuntamente los bordes no terminados.

MODELOS A, B

5. **HAGA PUNTADA FRUNCIDA** a los bordes de los hombros de la **ESPALDA** (3), entre los triángulos y las muescas, como se muestra.

6. Sujete con alfileres la espalda al **FRENTE** (1), en los bordes de los hombros y los lados. Ajuste el fruncido; Hilvane. Cosa.

BORDE DEL ESCOTE

7. Para prevenir el estiramiento del borde del escote, cosa a lo largo de la línea de la costura.

MODELO A

8. Cosa juntos los extremos de la **BANDA DEL ESCOTE** (4).

9. **REVES CON REVES**, doble la banda del escote a lo largo de la línea del dobléz; planche.

10. Sujete con alfileres juntos los bordes no terminados. Sujete con alfileres la banda del escote al borde del escote de la blusa, casando los centros y las marcas. Cosa, estirando la banda para ajustarla. Cosa de nuevo a 1/4" (6mm) en el margen de la costura. Recorte cerca de la puntada. Planche la costura hacia la blusa.

11. Opcional: **HAGA PUNTADA DE BORDE** a la blusa cerca del borde del escote.

MODELO B

12. Cosa juntas las secciones de la **CAPUCHA** (5), en la parte trasera central. Planche la costura hacia el lado izquierdo.

13. Aplique ojales a la capucha en los puntos grandes, como se muestra, siguiendo las instrucciones del fabricante.

14. **HAGA PUNTADA DE ADORNO** al lado izquierdo de la capucha desde la costura, como se muestra.

15. Cosa juntas las secciones del **FORRO** de la capucha (5), en la parte trasera central. Planche la costura hacia el lado izquierdo. **HAGA PUNTADA DE ADORNO** al lado izquierdo de la capucha desde la costura.

16. **DERECHO CON DERECHO**, sujete con alfileres el forro a la capucha; cosa.

17. **HAGA PUNTADA DE ADORNO** a la capucha, a 1" (2.5cm) del borde frontal, como se muestra.

18. Sujete con alfileres la capucha la borde del escote de la blusa, casando los centros y las marcas; hilvane. Cosa. Planche la costura hacia la blusa.

19. **HAGA PUNTADA DE ADORNO** a la blusa, a lo largo del borde del escote.

MODELOS A, B

20. **HAGA PUNTADA FRUNCIDA** al borde superior de la **MANGA** (6) entre las muescas.

21. Cosa la costura de la manga.

22. **DERECHO CON DERECHO**, sujete con alfileres la manga dentro del borde de la sisa, colocando el círculo grande en la costura de los hombros; hilvane. Cosa. Cosa de nuevo a 1/4" (6mm) en el margen de la costura. Recorte cerca de la puntada. Planche la costura hacia la manga.

TERMINADO

23. Para prevenir el estiramiento del borde inferior de la manga, cosa a lo largo de la línea de la costura.

24. Cosa juntos los extremos de la **BANDA DE LA MANGA** (7).

25. **REVES CON REVES**, doble la banda de la manga a lo largo de la línea del dobléz; planche ligeramente. Sujete con alfileres juntos los bordes no terminados.

26. Sujete con alfileres la banda de la manga al borde inferior de la manga, casando las costuras. Cosa, estirando la banda para ajustar. Cosa de nuevo a 1/4" (6mm) en el margen de la costura. Recorte cerca de la puntada. Planche la costura hacia la manga.

27. Para prevenir el estiramiento del borde inferior de la blusa, cosa a lo largo de la línea de la costura.

28. Cosa juntos los extremos de la **BANDA DEL DOBLADILLO** (8).

29. **REVES CON REVES**, doble la banda a lo largo de la línea del dobléz; planche ligeramente. Sujete con alfileres juntos los bordes no terminados.

30. Sujete con alfileres la banda del dobladillo al borde inferior de la blusa, casando los centros. Cosa estirando la banda para ajustarla. Cosa de nuevo a 1/4" (6mm) en el margen de la costura. Recorte cerca de la puntada. Planche la costura hacia la manga.

MODELO B

31. Para el cordel, haga un **DOBLADILLO ANGOSTO** de 5/8" (1.5cm), sobre los extremos de la cinta de sarga. Inserte la cinta en las aberturas de los ojales, extendiendo los extremos uniformemente.