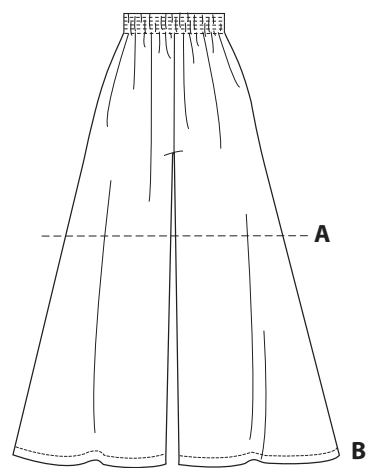
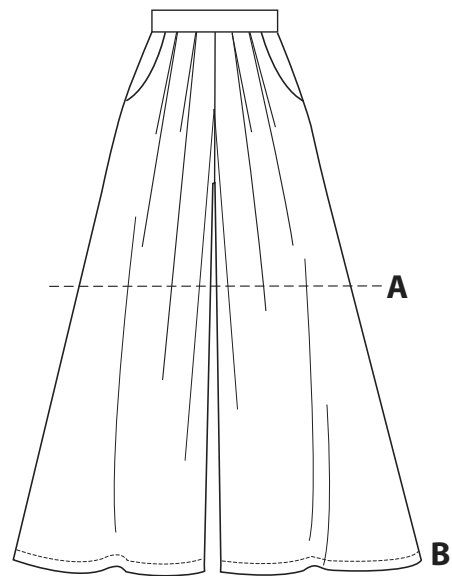


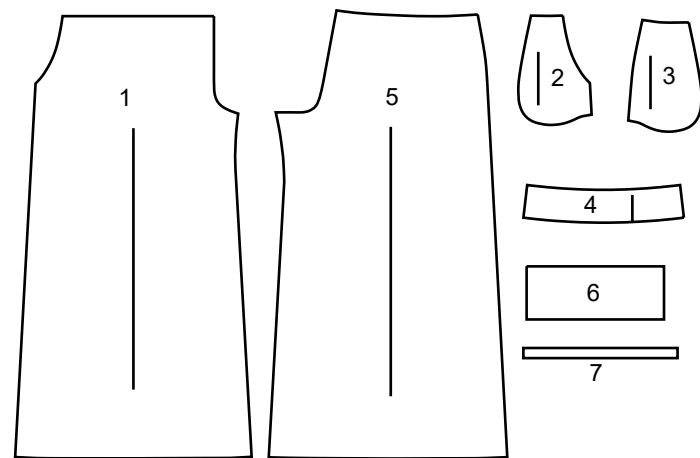
NEW LOOK® N6756

www.simplicity.com info@simplicity.com 1-888-588-2700

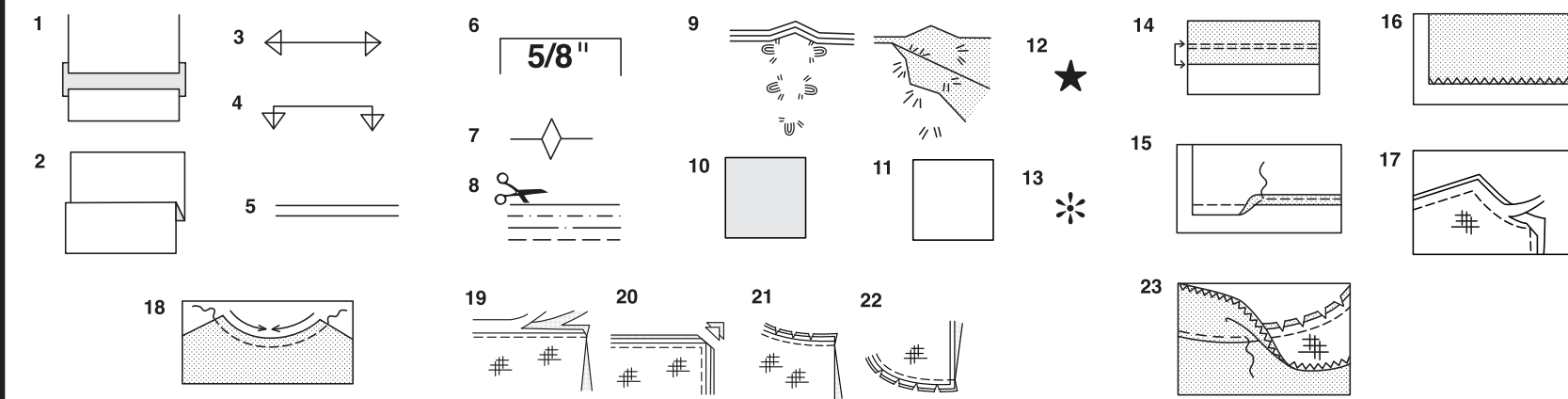
Thank you for purchasing this New Look pattern. We made every effort to provide you with a high quality product. Gracias por haber comprado este patrón de New Look. Hemos hecho todos los esfuerzos para ofrecerle un producto de alta calidad.



7 PIECES



- 1 FRONT-A,B
- 2 POCKET-A,B
- 3 SIDE FRONT-A,B
- 4 FRONT WAISTBAND-A,B
- 5 BACK-A,B
- 6 BACK CASING-A,B
- 7 GUIDE FOR ELASTIC-A,B



How To Use Your Multi Size Pattern

First Prepare Your Pattern

Select the pattern pieces according to the view you are making.

This pattern is made to body measurements with ease allowed for comfort and style. If your body measurements differ from those on the pattern envelope adjust the pieces before placing them on the fabric.

Check your back neck to waist and dress length, if necessary, alter the pattern. Lengthening and shortening lines are indicated.

1. **TO LENGTHEN** : Cut pattern between printed lines and place paper underneath. Spread pattern the required amount and pin to paper.
2. **TO SHORTEN** : Fold at the printed lines to form a pleat half the amount to be shortened, ie 1/2" (1.3cm) deep to shorten 1" (2.5cm).

Study Your Pattern Markings

3. **STRAIGHT GRAIN** : Place an even distance from selvage or a straight thread.
4. **FOLD** : Place on fold of fabric.
5. **LENGTHENING AND SHORTENING LINES**.
6. **SEAM ALLOWANCE** : 5/8" (1.5cm) unless otherwise stated.
7. **NOTCHES** : Match notches.
8. **CUTTING LINES** : Multi patterns have different cutting lines for different sizes.
9. **TAILOR-TACKS** : With double thread make two loose stitches forming loop through fabric layers and pattern leaving long ends. Cut loop to remove pattern. Snip thread between fabric layers. Leave tufts.

Cutting Layouts

Cutting Directions

FOR FOLDED AND DOUBLE LAYER FABRIC - Place fabric with right side inside and pin pattern on wrong side of fabric.

FOR SINGLE LAYER - Pin pattern on right side of fabric. NOTE: Pattern pieces may interlock more closely for smaller sizes. Cut notches out from cutting line.

BEFORE removing pattern from fabric, transfer all pattern markings using tailor tacks or dressmaking tracing paper.

10. **KEY**: pattern printed side down
11. **KEY**: pattern printed side up
12. **KEY**: Cut out all pieces except pieces that extend beyond folded fabric, then open out fabric and on RIGHT side of fabric, cut in positions as shown.

13. **KEY**: For with and without nap layouts ensure fabric is placed with nap or design running in same direction.

Before pinning to fabric, press tissue pattern with a warm dry iron to remove creases.

Sewing Directions

Fabric Key	Right Side	Wrong Side	Interfacing	Lining

Sew garment following Sewing Directions.

PIN or machine-baste seams matching notches.

STITCH 5/8" (1.5cm) seams unless otherwise stated.

PRESS seams open unless otherwise indicated, clipping when necessary so seams will lie flat.

14. **EASE-STITCH** or **GATHER** - Loosen needle tension slightly. With RIGHT side up, stitch 5/8" (1.5cm) from cut edge using a long stitch. Stitch again 1/4" (6mm) away in the seam allowance.

EDGE FINISH - Neaten raw edges of seams, hems and facings using one of the following methods.

15. Stitch 1/4" (6mm) from edge, turn under along stitching and stitch.
16. Zig-zag or overlock raw edges.

17. **INTERFACING** — Pin interfacing to WRONG side of fabric. Cut across corners that will be enclosed with seams. Machine-baste 1/2" (1.3cm) from cut edge. (Shown only on first illustration). Trim interfacing close to machine-basting. For FUSIBLE interfacing, follow manufacturer's directions.

18. **STAY-STITCH** —Stitch 1/2" (1.3cm) from cut edge, in direction of arrows: (Shown only in the first illustration).

LAYERING — Trim seam allowance in layers.

19. Layer enclosed seams
20. Trim corners
21. Clip inner curves
22. Notch outer curves

23. **UNDERSTITCH** —Press facing away from garment; press seam toward facing. Facing side up, understitch close to seam through facing and seam allowances.

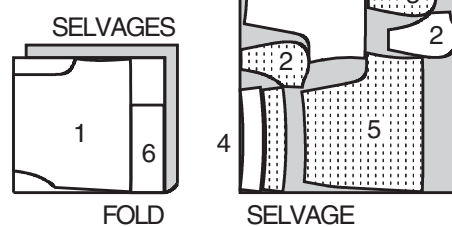
Cutting Layouts



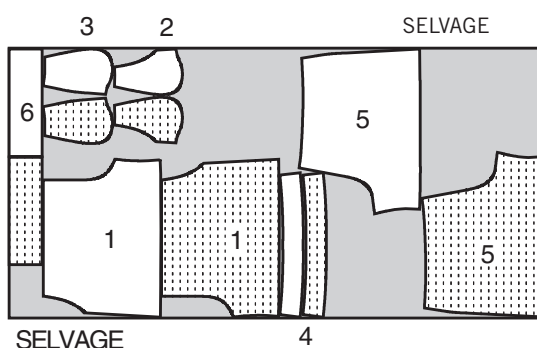
SHORTS A

USE PIECES 1 2 3 4 5 6

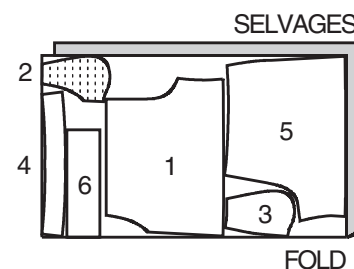
1A 45" (115CM) WITH OR WITHOUT NAP SIZES 10 12



1B 45" (115CM) WITH OR WITHOUT NAP SIZES 14 16 18 20 22



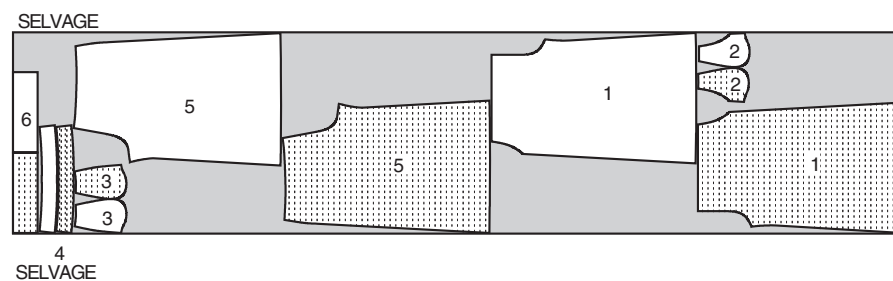
1C 60" (150CM) WITH OR WITHOUT NAP ALL SIZES



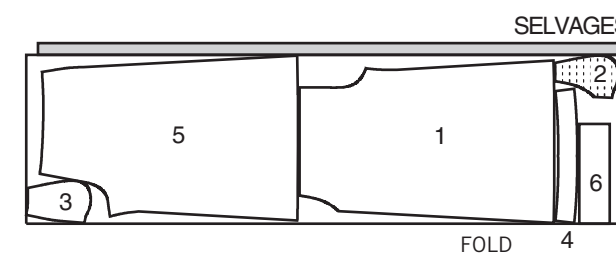
PANTS B

USE PIECES 1 2 3 4 5 6

2A 45" (115CM) WITH OR WITHOUT NAP ALL SIZES



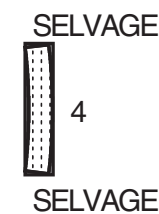
2B 60" (150CM) WITH OR WITHOUT NAP ALL SIZES



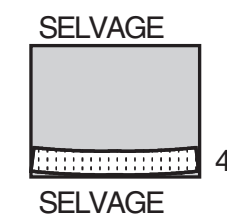
FUSIBLE INTERFACING

USE PIECE 4

3A 18"-20" (46-51CM) SIZES 10 12



3B 18"-20" (46-51CM) SIZES 14 16 18 20 22



Español

SHORTS A

USE LAS PIEZAS 1 2 3 4 5 6

1A 45" (115CM) CON O SIN PELUSA TALLAS 10 12

1B 45" (115CM) CON O SIN PELUSA TALLAS 14 16 18 20 22

1C 60" (150CM) CON O SIN PELUSA TODAS LAS TALLAS

PANTALON B

USE LAS PIEZAS 1 2 3 4 5 6

2A 45" (115CM) CON O SIN PELUSA TODAS LAS TALLAS

2B 60" (150CM) CON O SIN PELUSA TODAS LAS TALLAS

ENTRETELA ADHESIVA

USE LA PIEZA 4

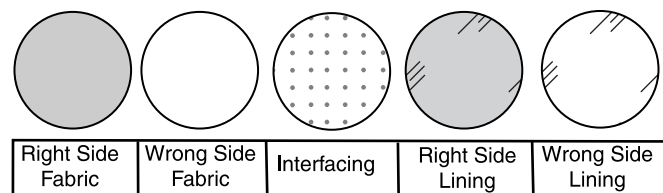
3A 18"-20" (46-51CM) TALLAS 10 12

3B 18"-20" (46-51CM) TALLAS 14 16 18 20 22

SELVAGE(S)=ORILLA(S)
FOLD=DOBLEZ

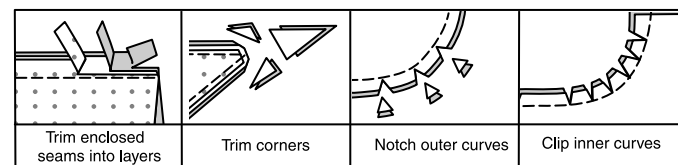
SEWING INFORMATION

FABRIC KEY



SEAM ALLOWANCES

Use 5/8" (1.5cm) seam allowances unless otherwise indicated.



PIN AND FIT

Pin or baste seams, **RIGHT SIDE TOGETHER**, matching notches. Fit garment before stitching major seams.

PRESS

Press seam allowances flat; then open unless otherwise stated. Clip where necessary so they lie flat.

GLOSSARY

Sewing terms appearing in **BOLD TYPE** in Sewing Instructions are explained below.

EASESTITCH - Stitch along seamline, using long machine stitches. Pull thread ends when adjusting to fit.

NOTE: For sleeve caps, make a second row of long machine stitches 1/4" (6mm) away in seam allowance. for more control.

SLIPSTITCH - Slide needle through a folded edge, then pick up a thread of underneath fabric.

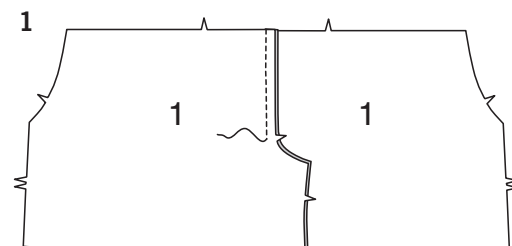
TOPSTITCH - On outside, stitch 1/4" (6mm) from edge, seam or previous stitching, using presser foot as guide, or stitch where indicated in instructions.

UNDERSTITCH - Open out facing or underside of garment; stitch to seam allowance close to seam.

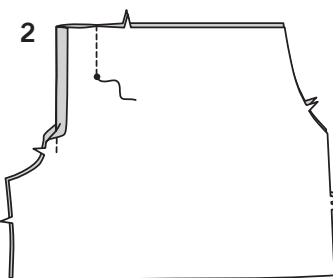
SEWING DIRECTIONS

SHORTS A PANTS B

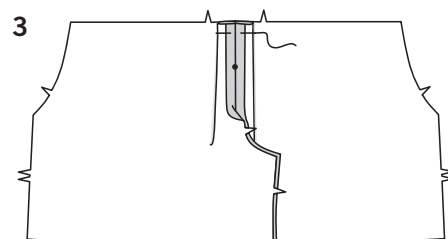
NOTE: The first view mentioned will be illustrated unless otherwise indicated.



1. Pin **FRONT (1)** sections, right sides together. Stitch center front seam from upper edge to notch.

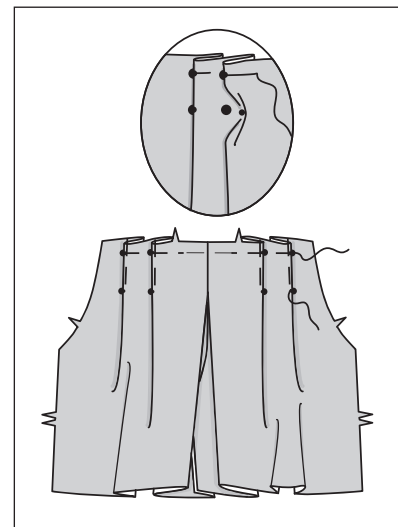


2. To make center pleat in front, bring stitching lines, right sides together, matching circles. Stitch along stitching lines from upper edge to circles.

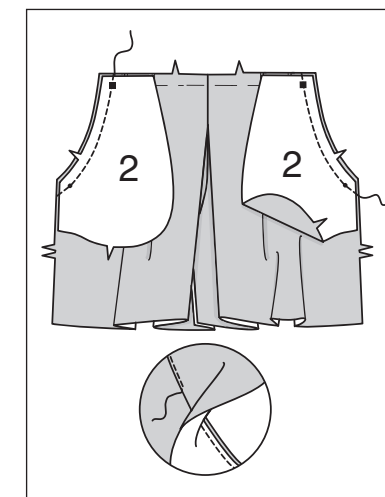


3. Press pleats flat, bringing circles to center. Baste across pleats.

4



5

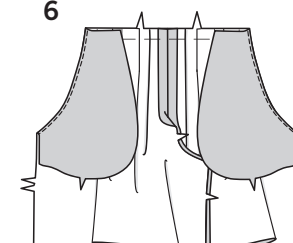


4. To make remaining pleats in front, on outside, crease along lines of small circles. Bring crease to lines of large circles. Baste. Baste across upper edge.

FRONT POCKETS

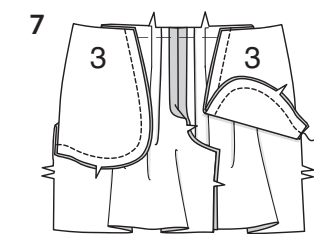
5. Stitch each **POCKET (2)** section to each upper side edge of front. Trim seam allowances. **UNDERSTITCH** pocket.

6



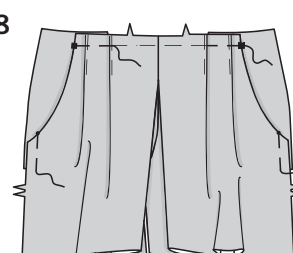
6. Turn pocket to inside. Press.

7



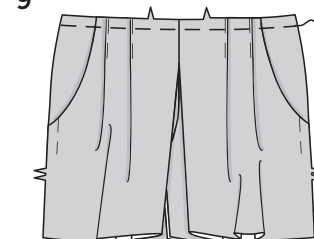
7. Stitch one **SIDE FRONT (3)** section to each pocket at outer edge, keeping front free. Press seamed edges together.

8



8. Baste across upper and side edges, matching circles and squares.

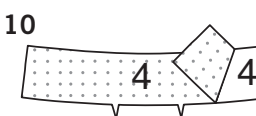
9



FRONT WAISTBAND

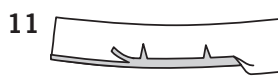
9. **EASESTITCH** upper edge of front.

10



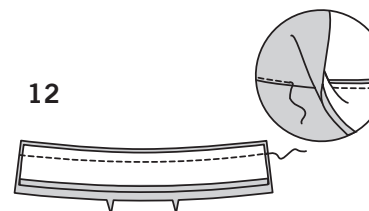
10. Fuse **INTERFACING** to wrong side of one **FRONT WAISTBAND (4)** section, following manufacturer's instructions. (Uninterfaced front waistband section will be used as facing.)

11



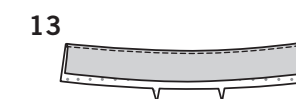
11. Press under 5/8" (1.5cm) on long notched edge of waistband **FACING**. Trim pressed-under edge to 3/8" (1cm).

12



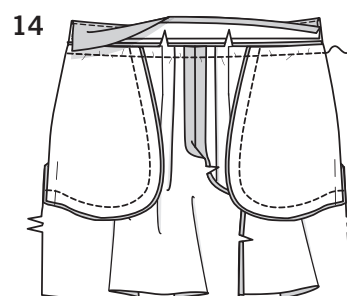
12. Pin facing to waistband, right sides together. Stitch upper edge. Trim seam allowances. **UNDERSTITCH** facing.

13



13. Turn facing to inside. Press.

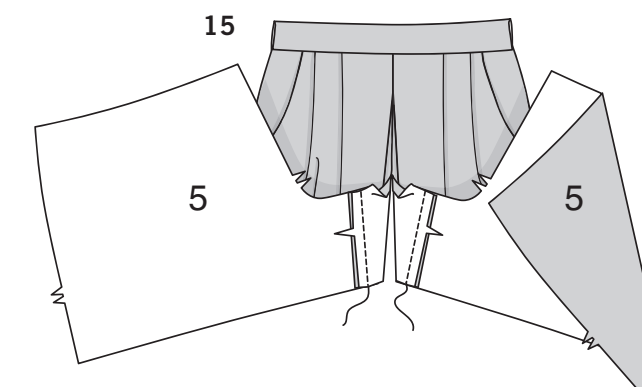
14



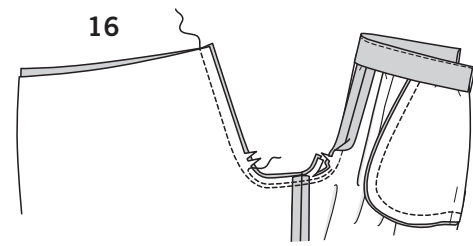
14. Pin waistband to garment, matching notches and centers. Adjust ease. Stitch. Trim seam allowances. Press seam allowances toward waistband.

BACK

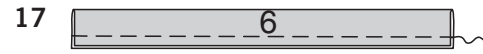
15



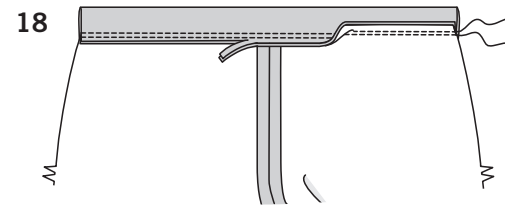
15. Stitch **BACK (5)** to front at inner leg.



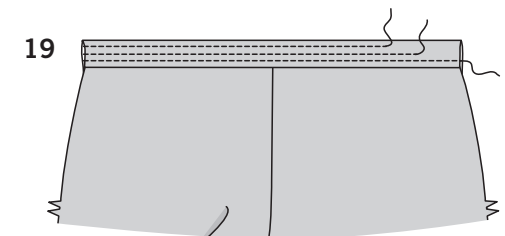
16. Stitch remainder of crotch seam to notch in front. Stitch again 1/4" (6mm) away in seam allowance between notches. Trim close to second stitching.



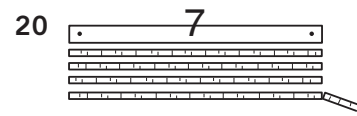
17. Fold BACK CASING (6) on foldline, wrong sides together. Baste long edges together.



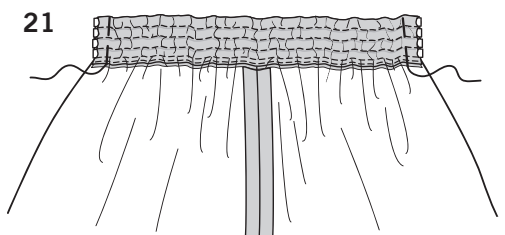
18. Pin casing to garment, matching centers. Stitch. Stitch again 1/4" (6mm) away in seam allowances. Trim close to second stitching. Press seam allowances downward.



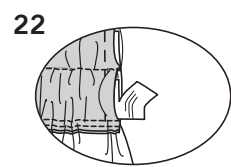
19. To form casings, stitch along stitching lines.



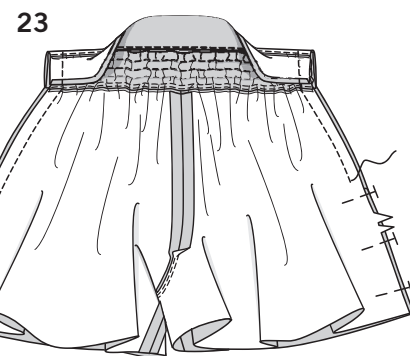
20. Cut four pieces of elastic using GUIDE FOR ELASTIC (7) pattern piece.



21. Insert one piece of elastic into each casing, having raw edges even. Baste across ends.

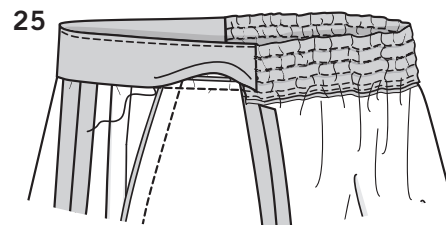
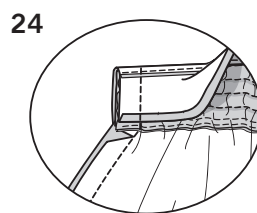


22. To reduce bulk, pull out ends of elastics and cut close to stitching.



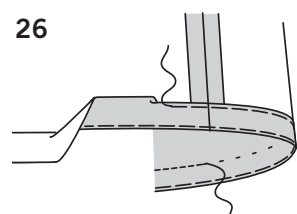
23. Open out front facing at sides. Pin front to back at sides, right sides together, matching notches and having upper edge of back at facing seam. Turn facing to outside over back edge. Stitch.

24. Clip back seam allowances below facing.



25. Turn facing to inside again. Press. **SLIPSTITCH** pressed-under edge over seam.

HEMS



26. Turn up a 1-1/4" (3.2cm) hem on lower edge of garment. Baste close to fold. Turn under 1/4" (6mm) on raw edge, easing in fullness if necessary. Baste hem in place close to upper edge. Press. **TOPSTITCH** hem along upper basting.

SHORTS A PANTALON B

NOTA: Se muestra el primer modelo a menos que se indique lo contrario.

FRENTE

- Prender con alfileres las secciones del FRENTE (1), derecho con derecho. Coser la costura del centro del frente entre el borde superior y el corte.
- Para hacer el pliegue del centro en el frente, juntar las líneas de pespunte, derecho con derecho, coincidiendo los círculos. Coser a lo largo de las líneas de pespunte entre el borde superior y los círculos.
- Planchar los pliegues planos, llevando los círculo hacia el centro. Hilvanar a través de los pliegues.
- Para hacer los pliegues restantes en el frente, por afuera, doblar a lo largo de las líneas de círculos pequeños. Llevar el pliegue hacia las líneas de círculos grandes. Hilvanar. Hilvanar a través del borde superior.

BOLSILLOS DEL FRENTE

- Coser cada sección del BOLSILLO (2) a cada borde superior later-al del frente. Recortar los márgenes de costura. **COSER POR DEBAJO** el bolsillo.
- Voltear el bolsillo hacia adentro. Planchar.
- Coser una sección del COSTADO DEL FRENTE (3) a cada bolsillo por el borde superior, manteniendo el frente suelto. Planchar juntos los bordes cosidos.
- Hilvanar a través de los bordes superiores y laterales, coincidiendo los círculos y los cuadrados.

PRETINA DEL FRENTE

- COSER PARA EMBEBER** el borde superior del frente.
- Adherir la **ENTRETELA** por el revés de una sección de la PRETINA DEL FRENTE (4), siguiendo las instrucciones del fabricante. (La sección sin entretela de la pretina del frente se utilizará como vista).
- Planchar hacia el revés 1.5cm en el borde largo con corte de la VISTA de la pretina. Recortar el borde planchado a 1cm.
- Prender con alfileres la vista a la pretina, derecho con derecho. Coser el borde superior. Recortar los márgenes de costura. **COSER POR DEBAJO** la vista.

13. Voltear la vista hacia adentro. Planchar.

14. Prender con alfileres la pretina a la prenda, coincidiendo los cortes y los centros. Embeber. Coser. Recortar los márgenes de cos-tura. Planchar los márgenes de costura hacia la pretina.

ESPALDA

15. Coser la ESPALDA (5) al frente por la parte interior de la pierna.

16. Coser el resto de la costura de la entrepierna hasta el corte en el frente. Coser nuevamente a 6mm en el margen de costura entre los cortes. Recortar cerca al segundo pespunte.

17. Doblar la JARETA DE LA ESPALDA (6) sobre la línea de doblez, revés con revés. Hilvanar los bordes largos juntos.

18. Prender con alfileres la jareta a la prenda, coincidiendo los centros. Coser. Coser nuevamente a 6mm en los márgenes de costura. Recortar cerca al segundo pespunte. Planchar los márgenes de cos-tura hacia abajo.

19. Para formar las jaretas, coser a lo largo de las líneas de pespunte.

20. Cortar cuatro piezas de elástico utilizando la pieza de patrón GUIA PARA ELASTICO (7).

21. Introducir una pieza de elástico en cada jareta, manteniendo los bordes no terminados parejos. Hilvanar a través de los extremos.

22. Para reducir el grosor, jalar los extremos de los elásticos y cortar cerca al pespunte.

23. Abrir la vista del frente por los costados. Prender con alfileres el frente a la espalda por los costados, derecho con derecho, coincidiendo los cortes y manteniendo el borde superior de la espalda en la costura de la vista. Voltear la vista hacia afuera sobre el borde de la espalda. Coser.

24. Hacer un piquete en los márgenes de costura de la espalda debajo de la vista.

25. Voltear la vista hacia adentro nuevamente. Planchar. Coser con **PUNTO DE DOBLADILLO** el borde planchado sobre la costura.

DOBLADILLOS

26. Hacer un dobladillo de 3.2cm en el borde inferior de la prenda. Hilvanar cerca al doblez. Doblar hacia el revés 6mm en el borde no terminado, embebiendo la amplitud si es necesario. Hilvanar el dobladillo en su lugar cerca al borde superior. Planchar. Hacer un **PESPUNTE DE ADORNO** en el dobladillo a lo largo del hil-ván superior.