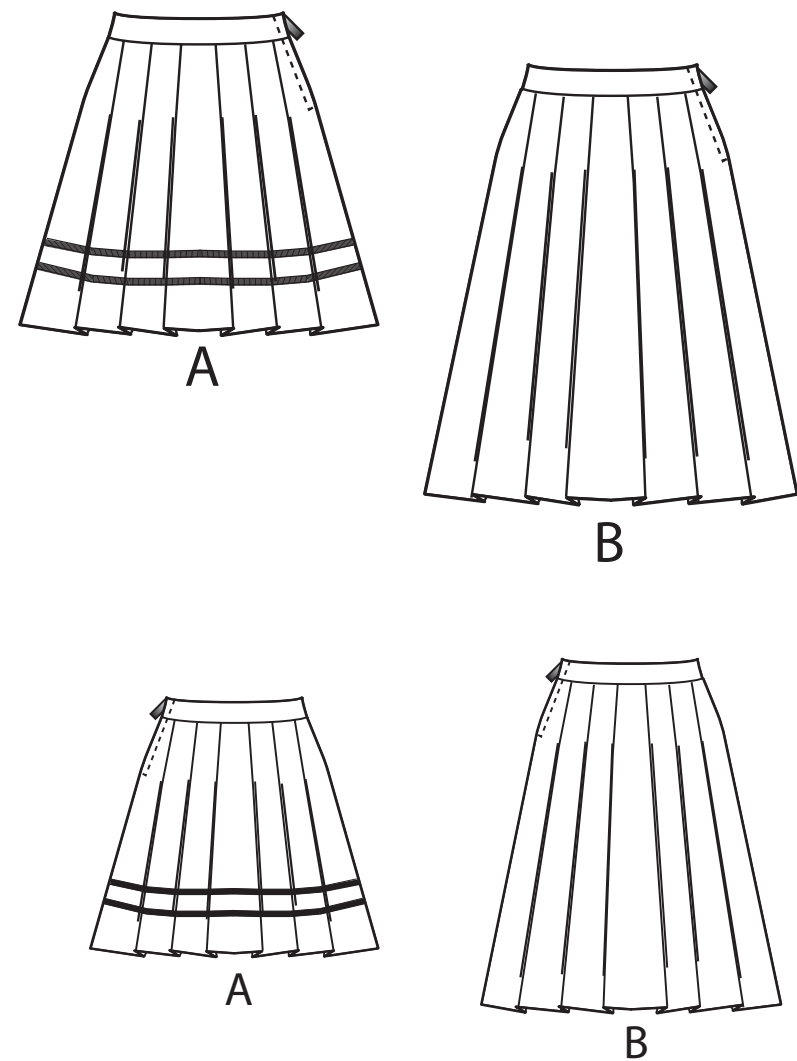


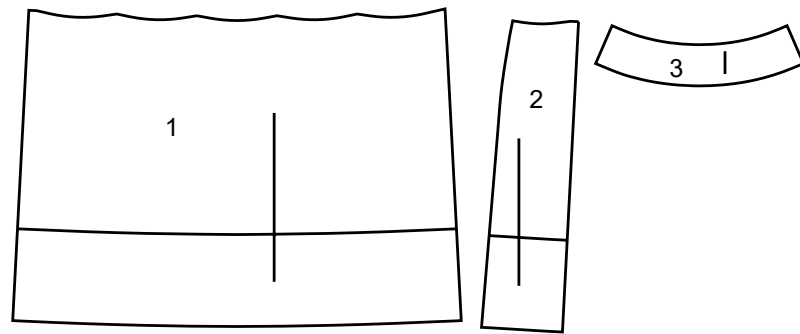
NEW LOOK® N6755

www.simplicity.com info@simplicity.com 1-888-588-2700

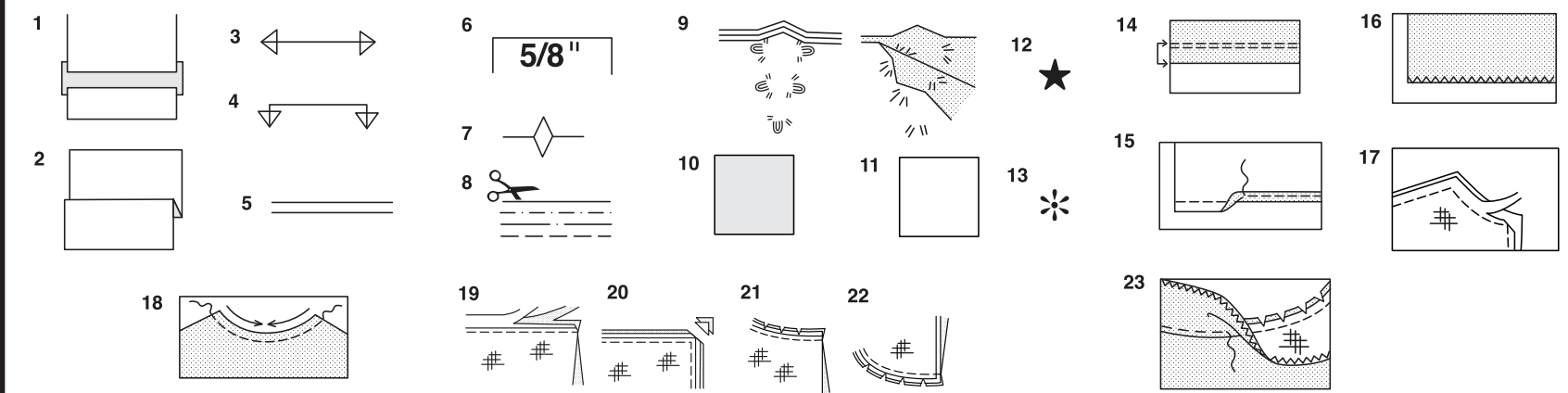
Thank you for purchasing this New Look pattern. We made every effort to provide you with a high quality product. Gracias por haber comprado este patrón de New Look. Hemos hecho todos los esfuerzos para ofrecerle un producto de alta calidad.



3 PIECES



1 FRONT AND BACK-A,B
2 SIDE FRONT AND BACK-A,B
3 WAISTBAND-A,B



How To Use Your Multi Size Pattern

First Prepare Your Pattern

Select the pattern pieces according to the view you are making.

This pattern is made to body measurements with ease allowed for comfort and style. If your body measurements differ from those on the pattern envelope adjust the pieces before placing them on the fabric.

Check your back neck to waist and dress length, if necessary, alter the pattern. Lengthening and shortening lines are indicated.

- TO LENGTHEN** : Cut pattern between printed lines and place paper underneath. Spread pattern the required amount and pin to paper.
- TO SHORTEN** : Fold at the printed lines to form a pleat half the amount to be shortened, ie 1/2" (1.3cm) deep to shorten 1" (2.5cm).

Study Your Pattern Markings

- STRAIGHT GRAIN** : Place an even distance from selvage or a straight thread.
- FOLD** : Place on fold of fabric.
- LENGTHENING AND SHORTENING LINES**.
- SEAM ALLOWANCE** : 5/8" (1.5cm) unless otherwise stated.
- NOTCHES** : Match notches.
- CUTTING LINES** : Multi patterns have different cutting lines for different sizes.
- TAILOR-TACKS** : With double thread make two loose stitches forming loop through fabric layers and pattern leaving long ends. Cut loop to remove pattern. Snip thread between fabric layers. Leave tufts.

Cutting Layouts

Cutting Directions

FOR FOLDED AND DOUBLE LAYER FABRIC - Place fabric with right side inside and pin pattern on wrong side of fabric.

FOR SINGLE LAYER - Pin pattern on right side of fabric. NOTE: Pattern pieces may interlock more closely for smaller sizes. Cut notches out from cutting line.

BEFORE removing pattern from fabric, transfer all pattern markings using tailor tacks or dressmaking tracing paper.

- KEY**: pattern printed side down
- KEY**: pattern printed side up
- KEY**: Cut out all pieces except pieces that extend beyond folded fabric, then open out fabric and on RIGHT side of fabric, cut in positions as shown.

13. **KEY**: For with and without nap layouts ensure fabric is placed with nap or design running in same direction.

Before pinning to fabric, press tissue pattern with a warm dry iron to remove creases.

Sewing Directions

Fabric Key	Right Side	Wrong Side	Interfacing	Lining

Sew garment following **Sewing Directions**.

PIN or machine-baste seams matching notches.

STITCH 5/8" (1.5cm) seams unless otherwise stated.

PRESS seams open unless otherwise indicated, clipping when necessary so seams will lie flat.

14. **EASE-STITCH** or **GATHER** - Loosen needle tension slightly. With RIGHT side up, stitch 5/8" (1.5cm) from cut edge using a long stitch. Stitch again 1/4" (6mm) away in the seam allowance.

EDGE FINISH - Neaten raw edges of seams, hems and facings using one of the following methods.

- Stitch 1/4" (6mm) from edge, turn under along stitching and stitch.
- Zig-zag or overlock raw edges.

17. **INTERFACING** — Pin interfacing to WRONG side of fabric. Cut across corners that will be enclosed with seams. Machine-baste 1/2" (1.3cm) from cut edge. (Shown only on first illustration). Trim interfacing close to machine-basting. For FUSIBLE interfacing, follow manufacturer's directions.

18. **STAY-STITCH** —Stitch 1/2" (1.3cm) from cut edge, in direction of arrows: (Shown only in the first illustration).

LAYERING — Trim seam allowance in layers.

- Layer enclosed seams
- Trim corners
- Clip inner curves
- Notch outer curves

23. **UNDERSTITCH** —Press facing away from garment; press seam toward facing. Facing side up, understitch close to seam through facing and seam allowances.

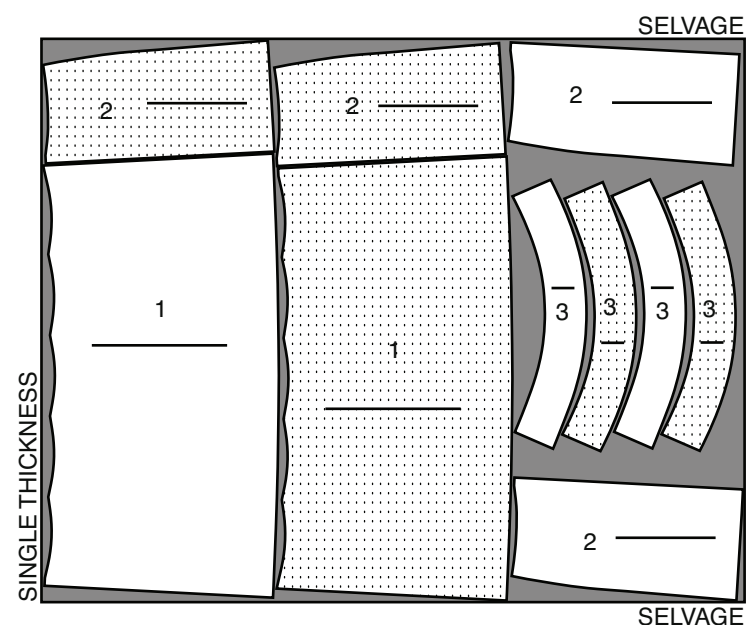
Cutting Layouts



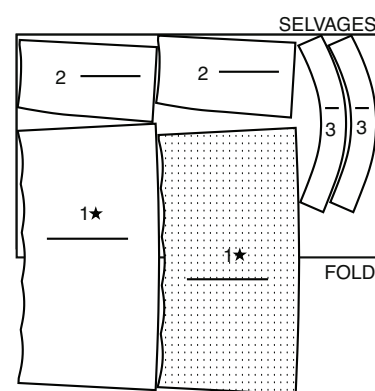
SKIRT A

USE PIECES 1 2 3

1A 45" (115 CM) WITH OR WITHOUT NAP
ALL SIZES



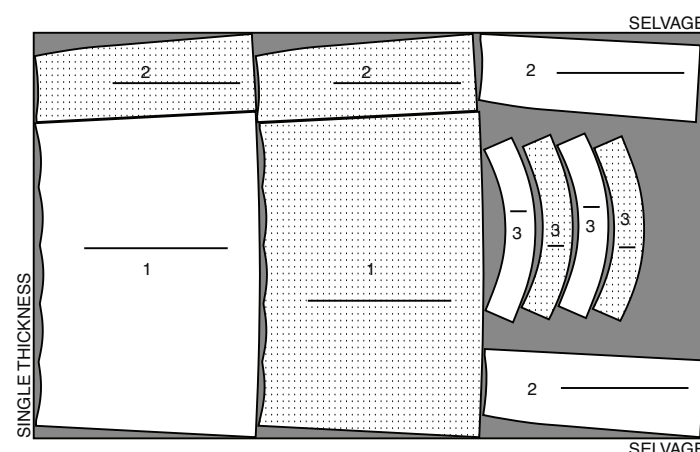
1B 60" (150 CM)
WITH OR WITHOUT NAP
ALL SIZES



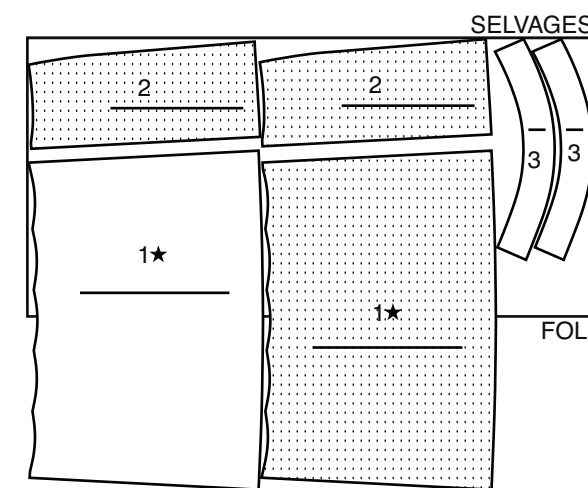
SKIRT B

USE PIECES 1 2 3

2A 45" (115 CM) WITH OR WITHOUT NAP
ALL SIZES



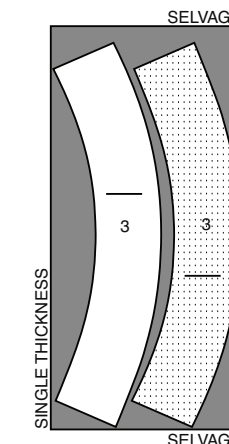
2B 60" (150 CM)
WITH OR WITHOUT NAP
ALL SIZES



INTERFACING A,B

USE PIECE 3

3 20" (51 CM)
WITH NAP
ALL SIZES



Español

FALDA A

USE LAS PIEZAS 1 2 3

1A 45" (115 CM) CON O SIN PELUSA
TODAS LAS TALLAS

1B 60" (150 CM)
CON O SIN PELUSA
TODAS LAS TALLAS

FALDA B

USE LAS PIEZAS 1 2 3

2A 45" (115 CM) CON O SIN PELUSA
TODAS LAS TALLAS

2B 60" (150 CM) CON O SIN PELUSA
TODAS LAS TALLAS

ENTRETELA A,B

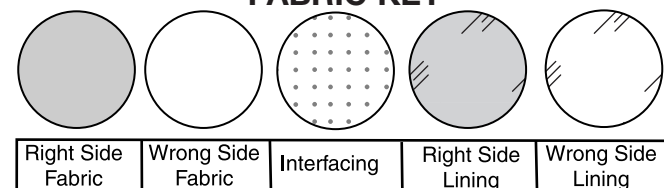
USE LA PIEZA 3

3 20" (51 CM) CON PELUSA
TODAS LAS TALLAS

SELVAGE= ORILLAS
FOLD= DOBLEZ
SINGLE THICKNESS= ESPESOR SIMPLE

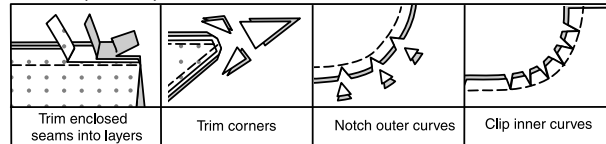
SEWING INFORMATION

FABRIC KEY



SEAM ALLOWANCES

Use 5/8" (1.5cm) seam allowances unless otherwise indicated.



PIN AND FIT

Pin or baste seams, **RIGHT SIDE TOGETHER**, matching notches. Fit garment before stitching major seams.

PRESS

Press seam allowances flat; then open unless otherwise stated. Clip where necessary so they lie flat.

GLOSSARY

Sewing terms appearing in **BOLD TYPE** in Sewing Instructions are explained below.

SLIPSTITCH - Slide needle through a folded edge, then pick up a thread of underneath fabric.

STAYSTITCH - Stitch 1/8" (3mm) from seamline in seam allowance (usually 1/2" (13mm) from raw edge).

UNDERSTITCH - Open out facing or underside of garment; stitch to seam allowance close to seam.

SEWING DIRECTIONS

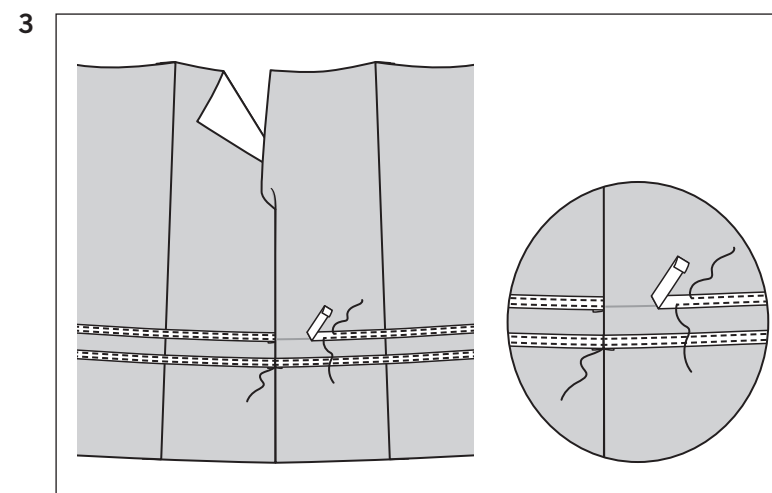
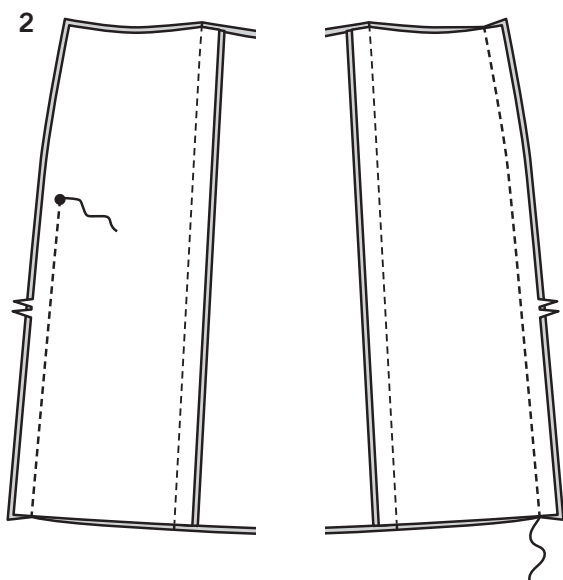
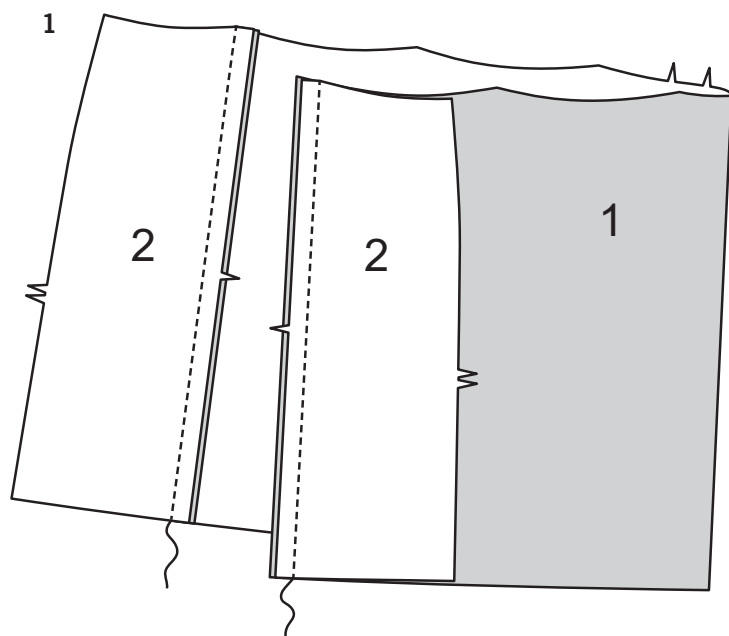
SKIRT A, B

NOTE: The first view mentioned will be illustrated, unless otherwise indicated.

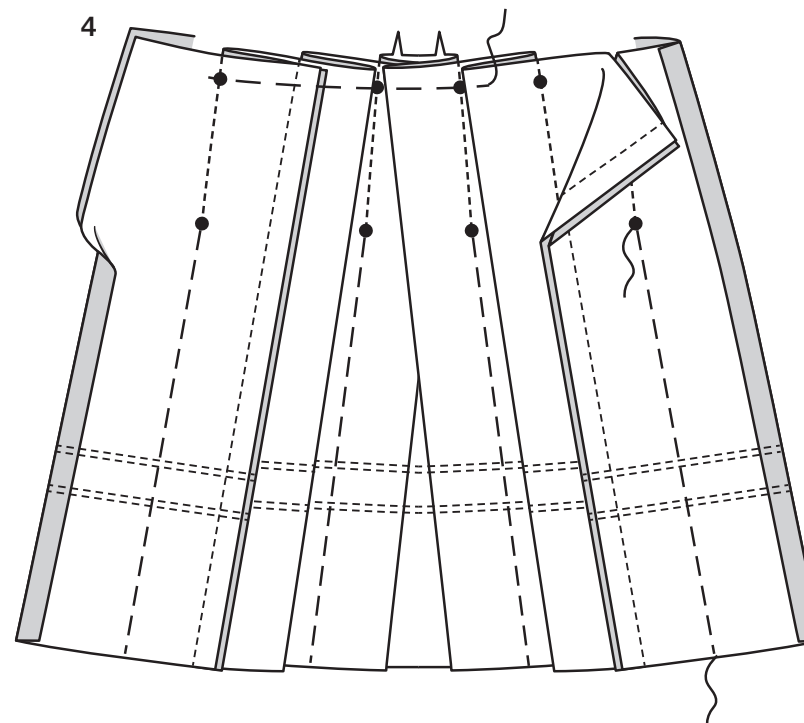
FRONT AND BACK

1. For front, stitch one **FRONT AND BACK** (1) and two **SIDE FRONT AND SIDE BACK** (2) sections together at sides. Turn seam toward front; press.

2. For back, stitch remaining front and back and remaining side front and side back sections together in same manner. Stitch front and back together at sides, leaving left side open above large circle.

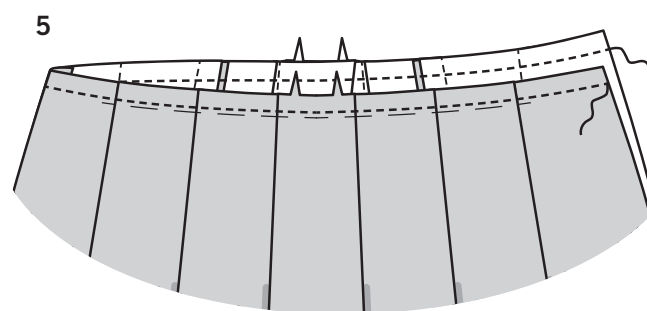


3. VIEW A: Pin ribbons to skirt placing lower edge of ribbon along placement lines, turning in ends to meet at one seam. Stitch. **SLIPSTITCH** ends.

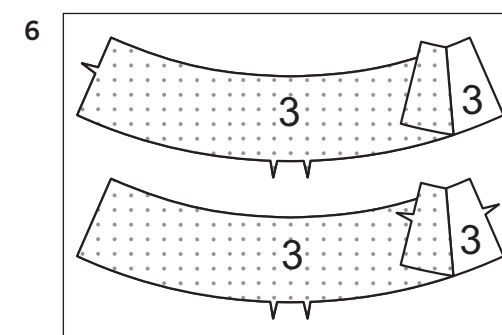


4. To make pleats, on inside, bring stitching lines and solid lines together, matching large circles; baste. Stitch from upper edge to lower large circles. Press pleats toward centers. Baste across upper edge.

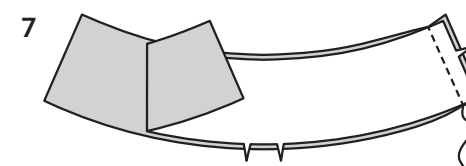
WAISTBAND



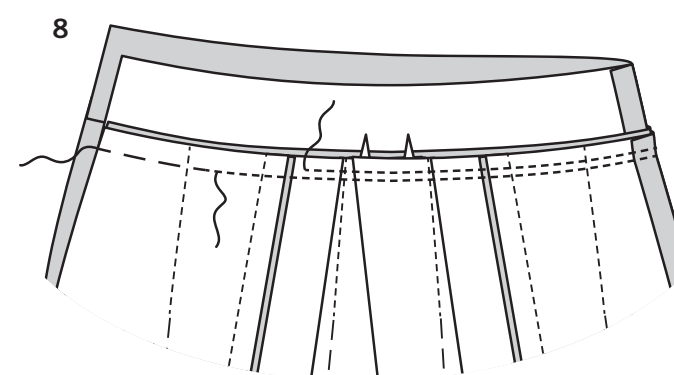
5. STAYSTITCH upper edge of skirt.



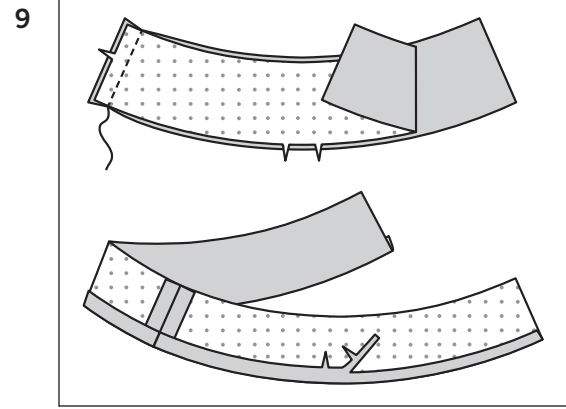
6. Fuse **INTERFACING** to wrong side of two **WAISTBAND** (3) sections, following manufacturer's instructions.



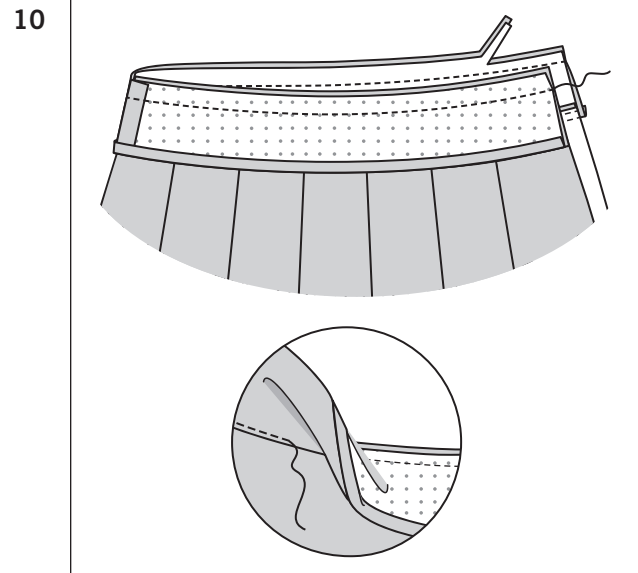
7. Stitch uninterfaced waistband sections together at right side, matching notches. Interfaced waistband sections will be used as **FACING**.



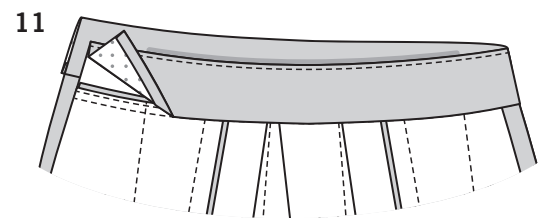
8. Pin lower edge of waistband to upper edge of skirt, matching notches, centers and right side seam, clipping skirt where necessary. Baste. Stitch. Stitch again 1/4" (6mm) away in seam allowances. Trim close to stitching. Turn seam toward waistband; press.



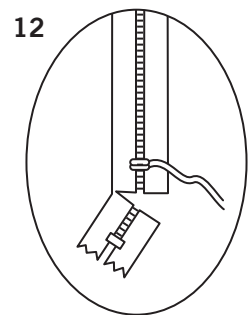
9. Stitch waistband FACING sections together at one side, matching notches. Turn under 5/8" (1.5cm) seam allowance on lower notched edge of facing. Press. Trim pressed seam allowance to 3/8" (1cm).



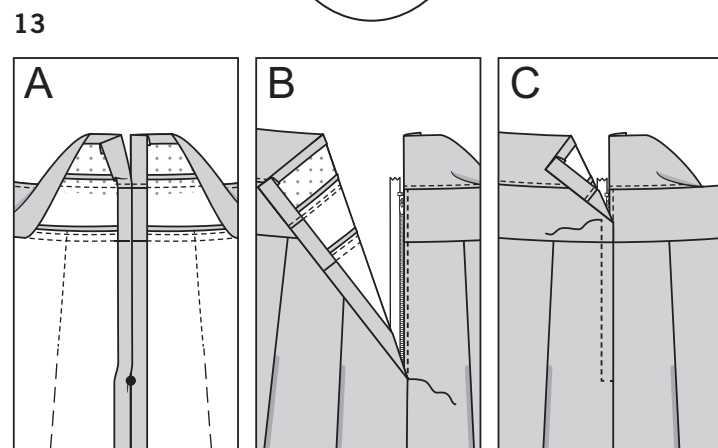
10. Pin waistband facing to waistband. Stitch upper edge. Trim. Press seam toward facing. **UNDERSTITCH** facing.



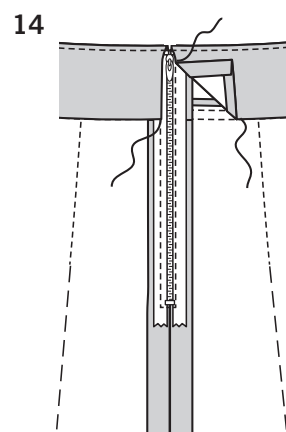
11. Turn facing to inside. Press.



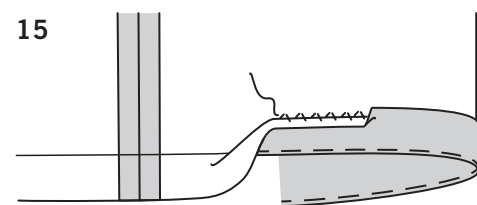
12. **NOTE:** It may be necessary to shorten zipper. To make new zipper stop, place zipper along opening edge with pull tab at large circle. Mark placement of new zipper stop at large circle. Whipstitch across teeth at marking. Cut zipper 3/4" (2cm) below the new stop.



13. (A) Open out waistband facing. Turn in 1/2" (13mm) on back opening edge; press. Turn in seam allowance on front opening edge; press.
(B) Place closed zipper (face up) under back edge, placing zipper stop at large circle and opening edge close to teeth. Using a zipper foot, stitch close to edge.
(C) Lap front opening edge over back edge, matching seamlines. (Front will lap 1/8" (3mm) over back). Stitch in place, pivoting 1/4" (6mm) below large circle, as shown.



14. Turn facing down, turning in opening edges to clear zipper teeth. **SLIPSTITCH** to zipper tape and pressed edge over seam.



HEM

15. Remove basting from pleats. Turn up 1-1/4" (3.2cm) hem. Baste close to folded edge. Hand-sew hem in place.

GLOSARIO

Los términos de costura que aparecen en **OSCURAS** en las Instrucciones de Costura se explican a continuación.

PUNTO DE DOBLADILLO - (Este se utiliza para unir dos bordes doblados o un borde doblado con una superficie plana). Deslizar la aguja a través del borde doblado; luego coger un hilo del doblez o de la superficie opuestos).

PESPUNTE DE REFUERZO - Coser a 3mm de la línea de costura en el margen de costura (por lo general a 1.3cm del borde no terminado).

PESPUNTE DE ADORNO - Por afuera, coser a 6mm del borde, de la costura o del pespunte anterior, utilizando un pie prensatela como guía o coser donde se indica en las instrucciones.

COSER POR DEBAJO - Abrir el refuerzo o la parte de abajo de la prenda. Coser el refuerzo o la parte de abajo al margen de costura cerca a la costura.

INSTRUCCIONES DE COSTURA

FALDA A, B

FRENTE Y ESPALDA

1. Para el frente, coser una pieza del FRENTE Y ESPALDA (1) y dos piezas del COSTADO DEL FRENTE Y COSTADO DE LA ESPALDA (2) juntas por los costados. Voltear la costura hacia el frente; asentar.

2. Para la espalda, coser juntas las piezas restantes del frente y espalda y del costado del frente y costado de la espalda de la misma forma. Coser el frente y espalda juntos por los costados, dejando el costado izquierdo abierto sobre el círculo grande.

3. **MODELO A:** prender con alfileres las cintas a la falda, colocando el borde inferior de la cinta a lo largo de las líneas de colocación, doblando hacia dentro los extremos de modo que se unan en una costura. Coser. Coser los extremos con **PUNTO DE DOBLADILLO**.

4. Para hacer los pliegues por dentro, juntar las líneas de pespunte y las líneas continuas, coincidiendo los círculos grandes; hilvanar hasta el borde inferior. Coser desde el borde superior hasta los círculos grandes inferiores. Asentar los pliegues hacia los centros. Hilvanar a través del borde superior.

PRETINA

5. Hacer un **PESPUNTE DE REFUERZO** en el borde superior de la falda.

6. Adherir la **ENTRETELA** por el revés de dos piezas de la PRETINA (3), siguiendo las instrucciones del fabricante.

7. Coser las piezas sin entreteila de la pretina juntas por un costado, coincidiendo los cortes. Las piezas con entreteila de la pretina servirán de VISTA.

8. Prender con alfileres el borde inferior de la pretina al borde superior de la falda, coincidiendo los cortes, los centros y la costura del costado derecho, haciendo los piquetes necesarios en la falda. Hilvanar. Coser, coser nuevamente a 6 mm de los márgenes de costura. Recortar cerca al pespunte. Voltear la costura hacia la pretina; asentar.

9. Coser las piezas de la VISTA de la pretina juntas por un costado, coincidiendo los cortes. Voltear hacia el revés el margen de costura de 1.5 cm en el borde inferior con corte de la vista. Asentar. Recortar el margen de costura asentado a 1 cm.

10. Prender con alfileres la vista de la pretina a la pretina. Coser el borde superior. Recortar. Asentar la costura hacia la vista. **COSER POR DEBAJO** la vista.

11. Voltear la vista hacia dentro. Asentar

CREMALLERA Y ACABADO

12. **NOTA:** Podría ser necesario recortar la cremallera. Para hacer un nuevo tope de cremallera, colocar la cremallera a lo largo del borde de la abertura con el tirador por el círculo grande superior. Marcar la colocación del nuevo tope de cremallera en el círculo grande inferior. Sobrehilar a través de los dientes por la marca. Cortar la cremallera 2 cm debajo del nuevo tope.

13. (A) Abrir la vista de la pretina. Doblar hacia dentro 13 mm en el borde de la abertura de la espalda; asentar. Doblar hacia dentro el margen de costura en el borde de la abertura del frente; asentar.

(B) Colocar la cremallera cerrada (boca arriba) debajo del borde de la espalda, colocando el tope de cremallera en el círculo grande y el borde de la abertura cerca a los dientes. Utilizando un pie de cremallera, coser cerca al borde.

(C) Sobreponer el borde de la abertura del frente al borde de la espalda, coincidiendo las líneas de costura. (El frente se sobrepondrá 3 mm a la espalda). Coser en su lugar, girando 6 mm debajo del círculo grande, como se indica.

14. Voltear la vista hacia abajo, doblando hacia dentro los bordes de la abertura para despejar los dientes de la cremallera. Coser a la cinta de la cremallera y el borde asentado sobre la costura con **PUNTO DE DOBLADILLO**.

DOBLADILLO

15. Retirar el hilván de los pliegues. Formar un dobladillo de 3.2 cm. Hilvanar cerca del borde doblado. Coser a mano el dobladillo en su lugar