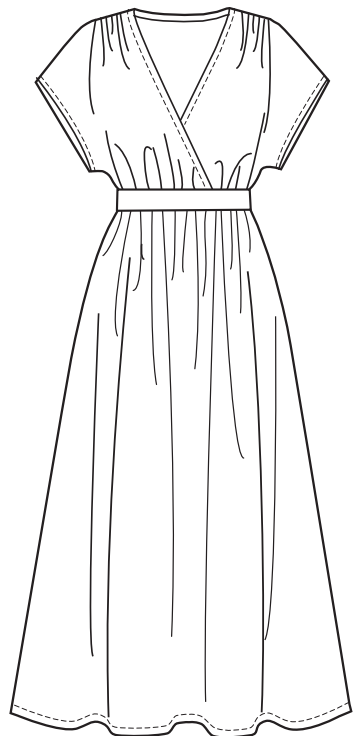


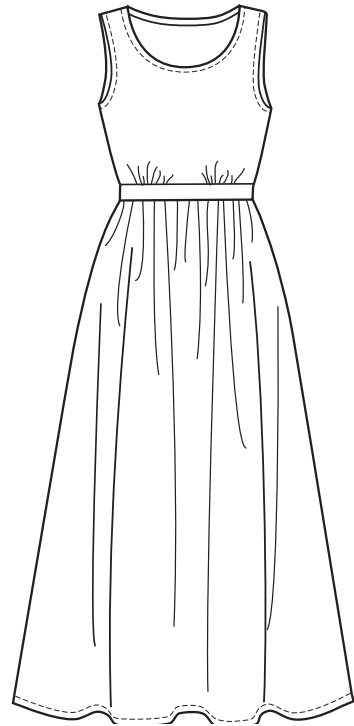
# NEW LOOK® N6751

www.simplicity.com info@simplicity.com 1-888-588-2700

Thank you for purchasing this New Look pattern. We made every effort to provide you with a high quality product. Gracias por haber comprado este patrón de New Look. Hemos hecho todos los esfuerzos para ofrecerle un producto de alta calidad.

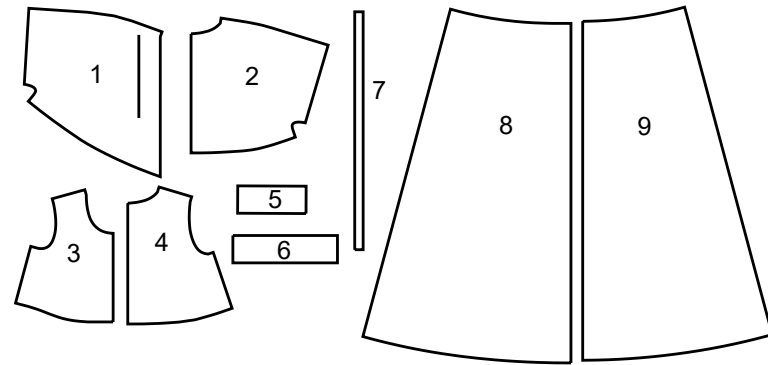


A

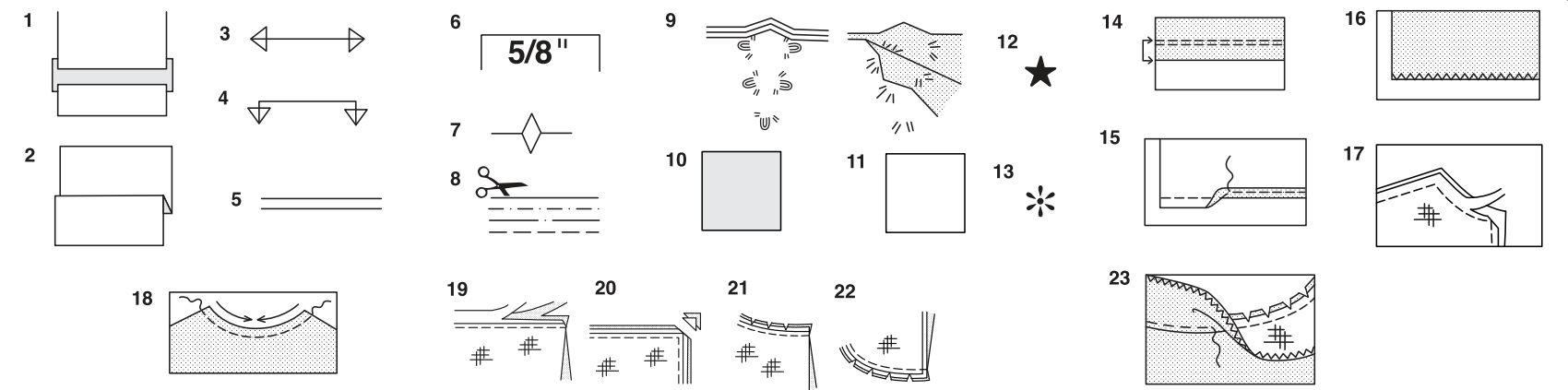


B

9 PIECES



- 1 BODICE FRONT-A
- 2 BODICE BACK-A
- 3 BODICE FRONT-B
- 4 BODICE BACK-B
- 5 FRONT INSET-A,B
- 6 BACK INSET-A,B
- 7 GUIDE FOR ELASTIC-A,B
- 8 SKIRT FRONT-A,B
- 9 SKIRT BACK-A,B



## How To Use Your Multi Size Pattern

### First Prepare Your Pattern

Select the pattern pieces according to the view you are making.

This pattern is made to body measurements with ease allowed for comfort and style. If your body measurements differ from those on the pattern envelope adjust the pieces before placing them on the fabric.

Check your back neck to waist and dress length, if necessary, alter the pattern. Lengthening and shortening lines are indicated.

1. **TO LENGTHEN** : Cut pattern between printed lines and place paper underneath. Spread pattern the required amount and pin to paper.
2. **TO SHORTEN** : Fold at the printed lines to form a pleat half the amount to be shortened, ie 1/2" (1.3cm) deep to shorten 1" (2.5cm).

### Study Your Pattern Markings

3. **STRAIGHT GRAIN** : Place an even distance from selvage or a straight thread.
4. **FOLD** : Place on fold of fabric.
5. **LENGTHENING AND SHORTENING LINES.**
6. **SEAM ALLOWANCE** : 5/8" (1.5cm) unless otherwise stated.
7. **NOTCHES** : Match notches.
8. **CUTTING LINES** : Multi patterns have different cutting lines for different sizes.
9. **TAILOR-TACKS** : With double thread make two loose stitches forming loop through fabric layers and pattern leaving long ends. Cut loop to remove pattern. Snip thread between fabric layers. Leave tufts.

## Cutting Layouts

### Cutting Directions

FOR FOLDED AND DOUBLE LAYER FABRIC - Place fabric with right side inside and pin pattern on wrong side of fabric.

FOR SINGLE LAYER - Pin pattern on right side of fabric. NOTE: Pattern pieces may interlock more closely for smaller sizes. Cut notches out from cutting line.

BEFORE removing pattern from fabric, transfer all pattern markings using tailor tacks or dressmaking tracing paper.

10. **KEY:** pattern printed side down
11. **KEY:** pattern printed side up
12. **KEY:** Cut out all pieces except pieces that extend beyond folded fabric, then open out fabric and on RIGHT side of fabric, cut in positions as shown.
13. **KEY:** For with and without nap layouts ensure fabric is placed with nap or design running in same direction.

Before pinning to fabric, press tissue pattern with a warm dry iron to remove creases.

### Sewing Directions

Fabric Key	Right Side	Wrong Side	Interfacing	Lining

Sew garment following **Sewing Directions.**

**PIN** or machine-baste seams matching notches.

**STITCH** 5/8" (1.5cm) seams unless otherwise stated.

**PRESS** seams open unless otherwise indicated, clipping when necessary so seams will lie flat.

14. **EASE-STITCH** or **GATHER** - Loosen needle tension slightly. With **RIGHT** side up, stitch 5/8" (1.5cm) from cut edge using a long stitch. Stitch again 1/4" (6mm) away in the seam allowance.

**EDGE FINISH** - Neaten raw edges of seams, hems and facings using one of the following methods.

15. Stitch 1/4" (6mm) from edge, turn under along stitching and stitch.
16. Zig-zag or overlock raw edges.

17. **INTERFACING** — Pin interfacing to **WRONG** side of fabric. Cut across corners that will be enclosed with seams. Machine-baste 1/2" (1.3cm) from cut edge. (Shown only on first illustration). Trim interfacing close to machine-basting. For **FUSIBLE** interfacing, follow manufacturer's directions.

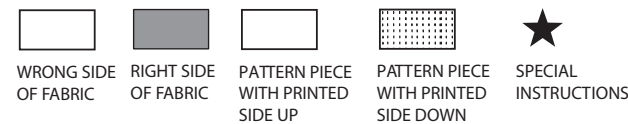
18. **STAY-STITCH** —Stitch 1/2" (1.3cm) from cut edge, in direction of arrows: (Shown only in the first illustration).

**LAYERING** — Trim seam allowance in layers.

19. Layer enclosed seams
20. Trim corners
21. Clip inner curves
22. Notch outer curves

23. **UNDERSTITCH** —Press facing away from garment; press seam toward facing. Facing side up, understitch close to seam through facing and seam allowances.

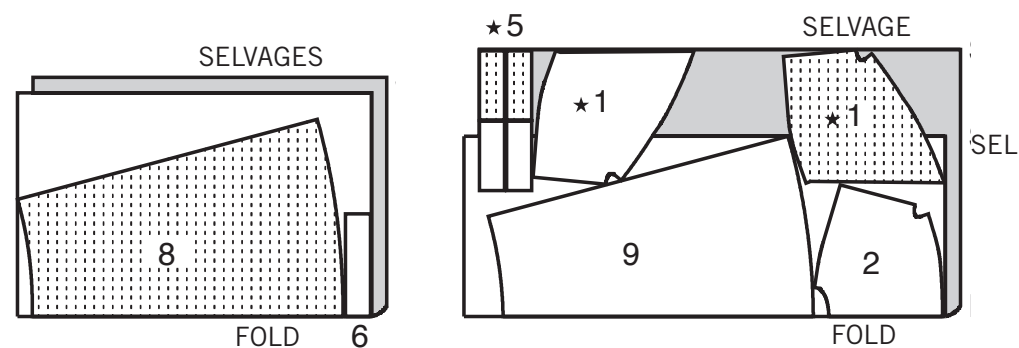
## Cutting Layouts



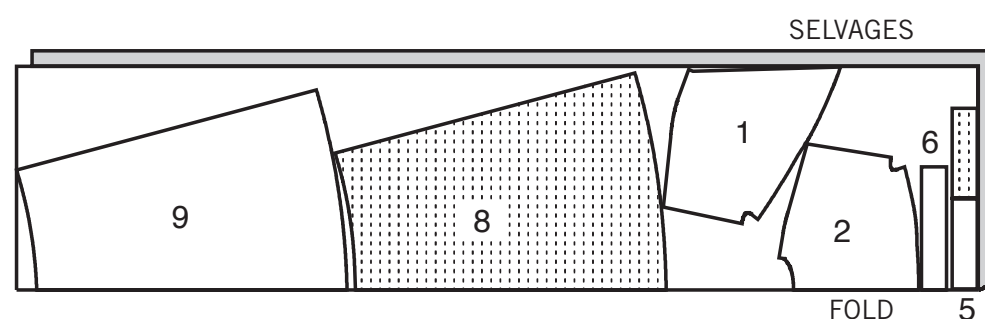
### DRESS A

USE PIECES 1 2 5 6 8 9

1A 60" (150CM)  
SIZES 10 12 14



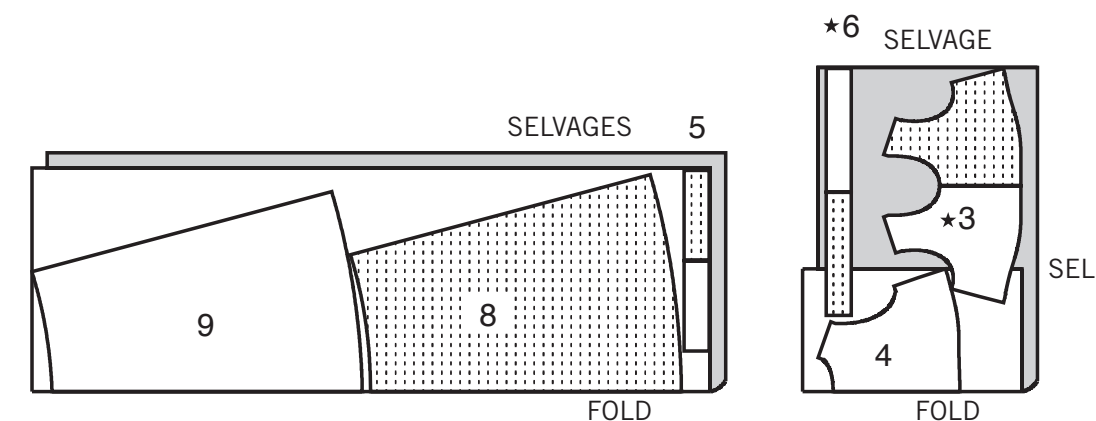
1B 60" (150CM)  
SIZES 16 18 20



### DRESS B

USE PIECES 3 4 5 6 8 9

2 60" (150CM)  
ALL SIZES



## Español

### VESTIDO A

USE LAS PIEZAS 1 2 5 6 8 9

1A 60" (150CM)  
TALLAS 10 12 14

1B 60" (150CM)  
TALLAS 16 18 20

### VESTIDO B

USE LAS PIEZAS 3 4 5 6 8 9

2 60" (150CM)  
TODAS LAS TALLAS

SELVAGES- ORILLAS  
SELVAGE- ORILLA  
SEL. ORILLA  
FOLD- DOBLEZ

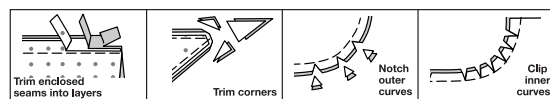
# SEWING DIRECTIONS

5/8" (1.5cm) SEAM ALLOWANCES ARE INCLUDED,  
(unless otherwise indicated)

## ILLUSTRATION SHADING KEY

Right Side	Wrong Side	Interfacing	Lining	Underlining

Press as you sew. Press seams flat, then press open, unless otherwise instructed. Clip seam allowances, where necessary, so they lay flat.



## GLOSSARY

Sewing terms appearing in **BOLD TYPE** in Sewing Instructions are explained below.

**DOUBLE-STITCH**- Stitch seam along seamline; stitch again 1/4" (6mm) away in seam allowance using a straight stitch OR zigzag stitch; trim close to second stitching OR overlock seam.

**GATHER**- Stitch along seamline and again 1/4" (6mm) away in seam allowance, using long machine stitches. Pull thread ends when adjusting to fit.

**NARROW HEM**- Turn in hem; press, easing in fullness if necessary. Open out hem. Turn in again so raw edge is along crease; press. Turn in along crease; stitch.

## DRESS A, B

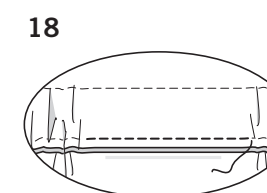
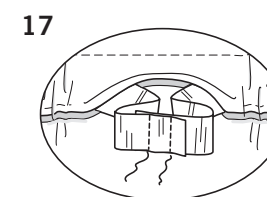
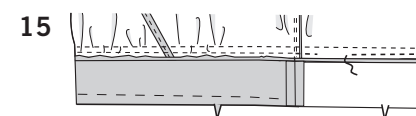
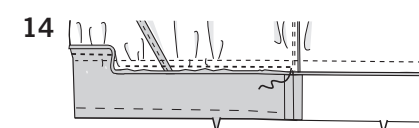
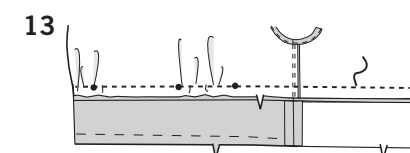
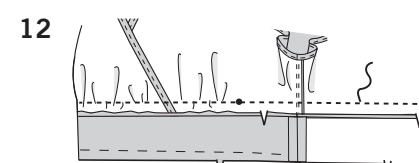
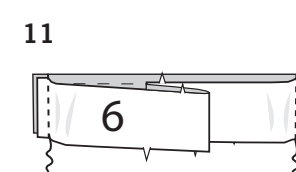
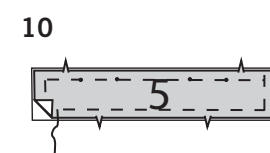
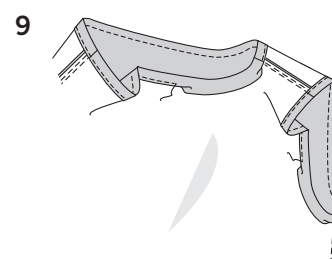
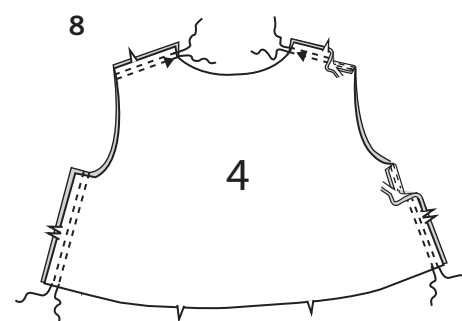
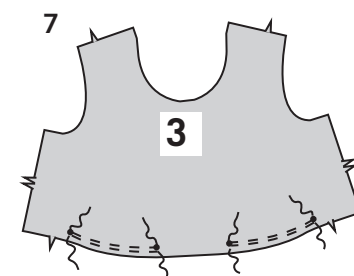
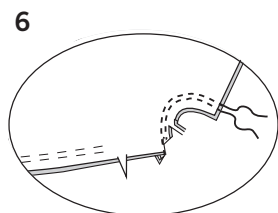
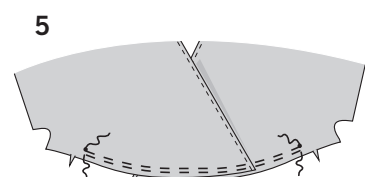
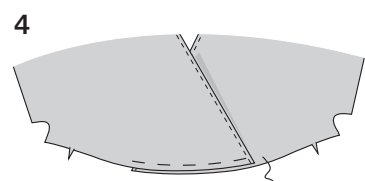
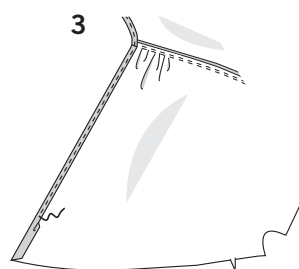
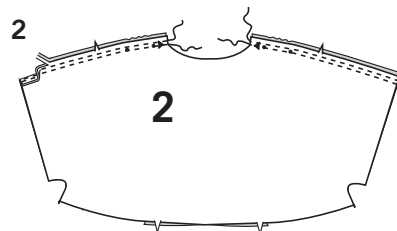
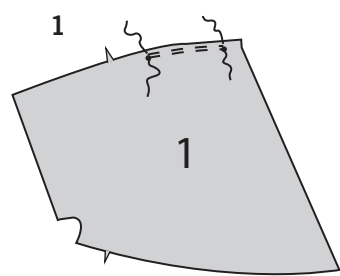
**NOTE:** For Knit Garments, use a zigzag or straight stitch, stretching fabric slightly while stitching.

**NOTE:** Illustrated for View A, unless otherwise indicated.

### BODICE

#### VIEW A

- 1. GATHER** shoulder edge of BODICE FRONT (1) between small circles.
- Pin BODICE BACK (2) to bodice front sections at shoulders and upper sleeve edges, matching symbols. Adjust gathers; baste. Stitch in **DOUBLE-STITCHED** seams. Press seams toward back.
- Make 5/8" (1.5cm) **NARROW HEM** along front opening and neck edge, as shown.
- Lap right bodice front over left, matching centers. Baste across lower edge.
- GATHER** lower edge of bodice front between small circles.
- Stitch bodice back to bodice front at sides and lower sleeve edge in **DOUBLE-STITCHED** seams. Press seams toward back.



### VIEW B

- 7. GATHER** lower edge of BODICE FRONT (3) between small circles, as shown.
- Stitch BODICE BACK (4) to bodice front at shoulders and sides in **DOUBLE-STITCHED** seams. Press seams toward back.
- Make 5/8" (1.5cm) **NARROW HEM** along neck and arm-hole edges, as shown.

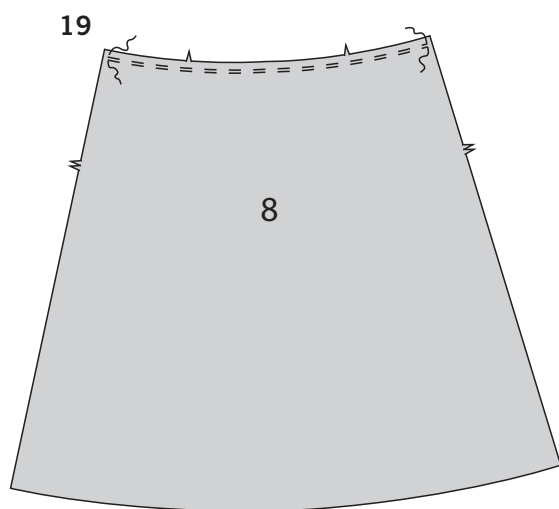
### INSET, SKIRT AND FINISHING

- With wrong sides together, baste FRONT INSET (5) sections together along seamlines.
- Stitch BACK INSET (6) to front inset at sides.
- VIEW A:** Pin inset to lower edge of bodice, matching centers and symbols. Adjust gathers; baste. Stitch.
- VIEW B:** Pin inset to lower edge of bodice, matching centers and symbols. Adjust gathers; baste. Stitch.
- To form casing for elastic, stitch front seam allowances together 1/4" (6mm) from raw edge between side seams. Keeping bodice free. Press seam toward inset.
- Stitch back seam allowance in place 1/4" (6mm) from raw edge between side seams, through all thicknesses, leaving an opening, as shown.

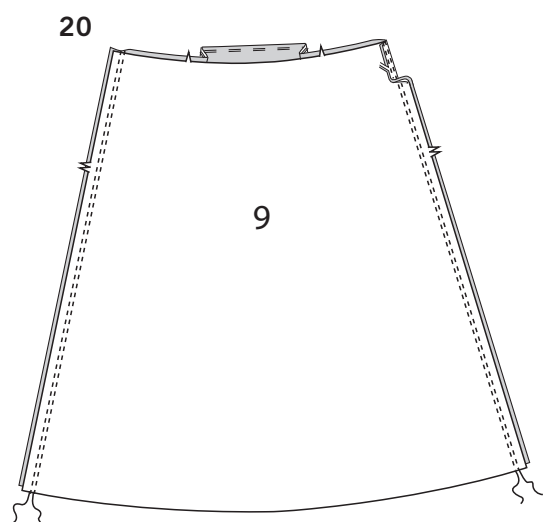
**16.** Cut two pieces of elastic the length of GUIDE FOR ELASTIC (7).

**17.** Insert one strip of elastic through opening in casing. Lap ends; hold with safety pin. Try on and adjust if necessary. Stitch ends of elastic securely.

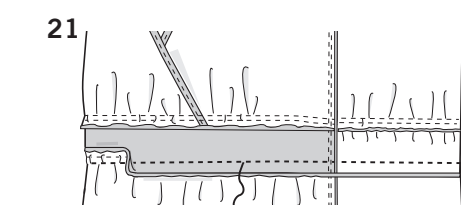
**18.** Stitch opening in casing, stretching elastic while stitching.



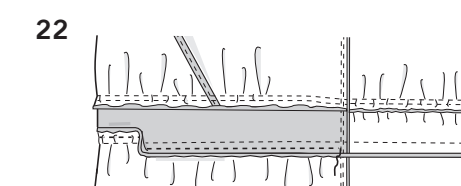
**19. GATHER** upper edge of SKIRT FRONT (8) between seamlines, as shown.



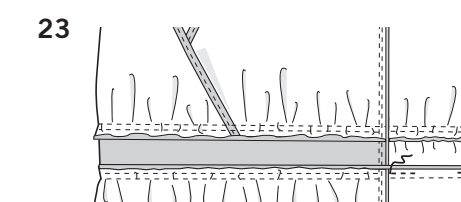
**20.** Stitch SKIRT BACK (9) to skirt front at sides in **DOUBLE-STITCHED** seams. Press seams toward back.



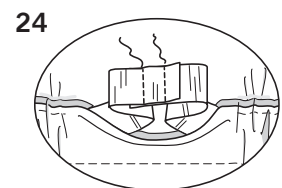
**21.** Pin skirt to inset, matching centers and seams. Adjust gathers; baste. Stitch.



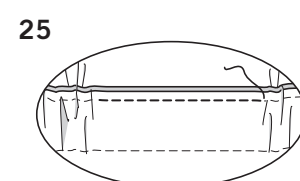
**22.** To form casing for elastic, stitch front waist seam allowances together 1/4" (6mm) from raw edge between side seams. Keeping dress free Press seam toward inset.



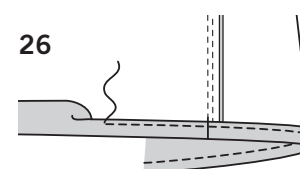
**23.** Stitch back seam allowance in place 1/4" (6mm) from raw edge between side seams, through all thicknesses, leaving an opening, as shown.



**24.** Insert remaining piece of elastic through opening in casing. Lap ends; hold with safety pin. Try on and adjust if necessary. Stitch ends of elastic securely.



**25.** Stitch opening in casing, stretching elastic while stitching.



**26.** Make 5/8" (1.5cm) **NARROW HEM** at lower edge of dress.

## INSTRUCCIONES DE COSTURA

## VESTIDOS A, B

**NOTA:** Para telas tejidas, use una puntada de zig-zag o una puntada recta, estirando ligeramente la tela mientras este cosiendo.

**NOTA:** Ilustrado para el Modelo A, a menos que se determine algo diferente.

## CORPIÑO

## MODELO A

- 1. FRUNZA** el borde de los hombros del FRENTE DEL CORPIÑO (1), entre los círculos pequeños.
- Sujete con alfileres la **ESPALDA DEL CORPIÑO (2)**, a las secciones del frente del corpiño, en los bordes de los hombros y de la manga superior, casando las marcas. Ajuste los fruncidos. Hilvane. Cosa en una **PUNTADA DOBLE**. Planche las costuras hacia atrás.
- HAGA UN DOBLADILLO ANGOSTO** de 5/8" (1.5cm), a lo largo de los bordes abiertos frontales y del escote, como se muestra.
- Cruce el frente del corpiño derecho sobre el izquierdo, casando los centros. Hilvane a través del borde inferior.
- FRUNZA** el borde inferior frontal del corpiño, entre los círculos pequeños.
- Cosa la espalda al frente del corpiño, en los bordes laterales e inferior de la manga, usando una **PUNTADA DOBLE**. Planche las costuras hacia atrás.

## MODELO B

- FRUNZA** el borde inferior del FRENTE DEL CORPIÑO (3), entre los círculos pequeños, como se muestra.
- Cosa la **ESPALDA DEL CORPIÑO (4)** al frente del corpiño, en los bordes de los hombros y los lados, haciendo una **PUNTADA DOBLE**. Planche las costuras hacia atrás.
- HAGA UN DOBLADILLO ANGOSTO** de 5/8" (1.5cm) a lo largo de los bordes del escote y de la sisa, como se muestra.

## INCRUSTACION, FALDA Y TERMINADO

**10. REVES CON REVES**, hilvane juntas las secciones de la INCRUSTACION FRONTAL (5), a lo largo de las líneas de la costura.

**11.** Cosa la INCRUSTACION TRASERA (6), a la incrustación frontal en los lados.

**12. MODELO A:** Sujete con alfileres la incrustación al borde inferior del corpiño, casando los centros y las marcas. Ajuste el fruncido, hilvane. Cosa.

**13. MODELO B:** Sujete con alfileres la incrustación al borde inferior del corpiño, casando los centros y las marcas. Ajuste el fruncido, hilvane. Cosa.

## MODELOS A, B

**14.** Para formar la jareta del elástico, cosa junto el margen de la costura frontal, a 1/4" (6mm) del borde no terminado, entre las costuras laterales. Mantenga libre el corpiño. Planche la costura hacia la incrustación.

**15.** Cosa el margen de la costura trasero en su lugar, a 1/4" (6mm) del borde no terminado, entre las costuras laterales, a través de todos los grosores y dejando una abertura como se muestra.

**16.** Corte dos pedazos de elástico, de la longitud de la GUIA PARA EL ELASTICO (7).

**17.** Inserte una tira del elástico en la jareta. Cruce los extremos y sosténgalos con un gancho de seguridad. Pruébese la prenda y ajústela como lo considere necesario. Cosa firmes y seguros los extremos del elástico.

**18.** Cosa la abertura de la jareta, estirando el elástico a medida que vaya cosiendo.

**19. FRUNZA** el borde superior del FRENTE DE LA FALDA (8), entre las líneas de la costura, como se muestra.

**20.** Cosa la parte TRASERA DE LA FALDA (9) al frente de la falda en los laterales, **HACIENDO UNA PUNTADA DOBLE**. Planche las costuras hacia atrás.

**21.** Sujete con alfileres la falda a la incrustación, casando los bordes de los centros y las costuras. Ajuste el fruncido; hilvane. Cosa.

**22.** Para formar la jareta del elástico, cosa juntos los márgenes de la costura frontal de la cintura, a 1/4" (6mm) del borde no terminado, entre las costuras laterales. Manteniendo el vestido libre. Planche la costura hacia la incrustación.

**23.** Cosa el margen de la costura trasero en su lugar, a 1/4" (6mm) del borde no terminado entre las costuras laterales, a través de todos los grosores y dejando una abertura como se muestra.

**24.** Inserte el pedazo de elástico restante en la jareta. Cruce los extremos y sosténgalos con un gancho de seguridad. Pruébese la prenda y ajuste si lo considera necesario. Cosa firmes y seguros los extremos del elástico.

**25.** Cosa la abertura de la jareta, estirando el elástico a medida que vaya cosiendo.

**26.** Haga un **DOBLADILLO ANGOSTO** de 5/8" (1.5cm), en el borde inferior del vestido.