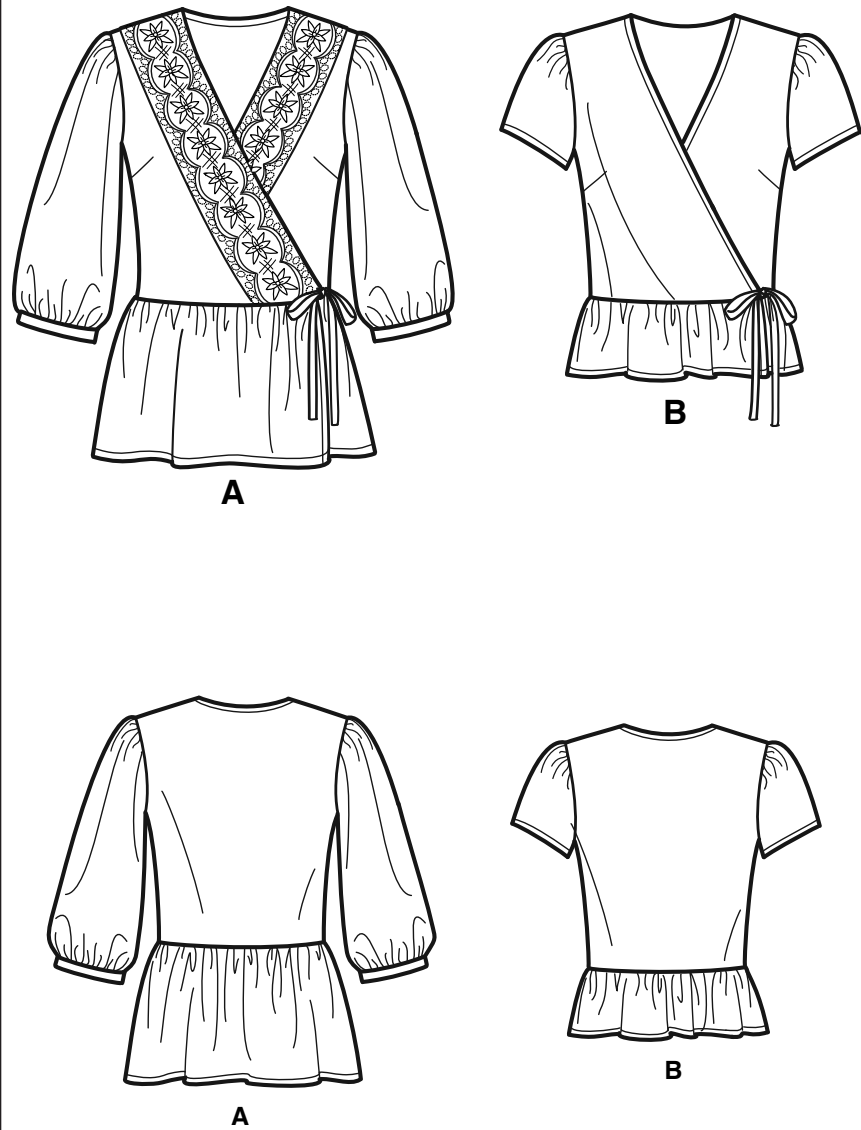


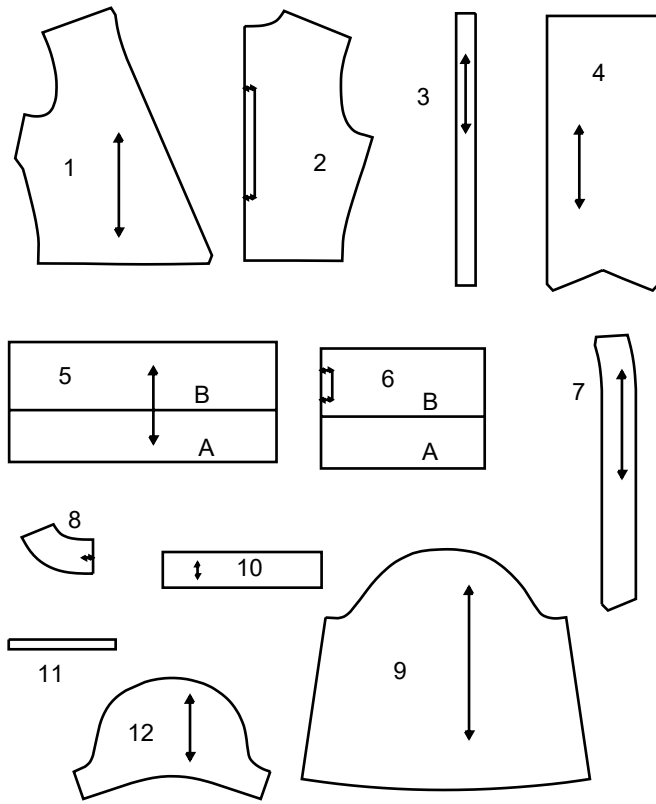
NEWLOOK® N6720

www.simplicity.com info@simplicity.com 1-888-588-2700

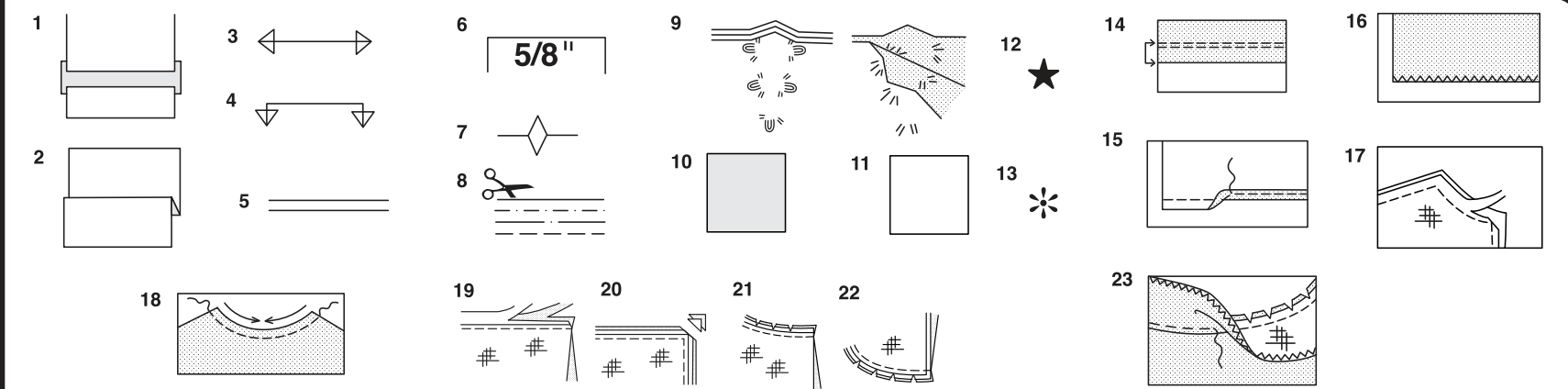
Thank you for purchasing this New Look pattern. We made every effort to provide you with a high quality product. Gracias por haber comprado este patrón de New Look. Hemos hecho todos los esfuerzos para ofrecerle un producto de alta calidad.



12 PIECES



- 1 BODICE FRONT - A,B
- 2 BODICE BACK - A,B
- 3 TIE END - A,B
- 4 COLLAR - A
- 5 PEPLUM FRONT - A,B
- 6 PEPLUM BACK - A,B
- 7 FRONT FACING - A,B
- 8 BACK FACING - A,B
- 9 SLEEVE - A
- 10 SLEEVE BAND - A
- 11 GUIDE FOR INSIDE TAB - A,B
- 12 SLEEVE - B



How To Use Your Multi Size Pattern

First Prepare Your Pattern

Select the pattern pieces according to the view you are making.

This pattern is made to body measurements with ease allowed for comfort and style. If your body measurements differ from those on the pattern envelope adjust the pieces before placing them on the fabric.

Check your back neck to waist and dress length, if necessary, alter the pattern. Lengthening and shortening lines are indicated.

1. **TO LENGTHEN** : Cut pattern between printed lines and place paper underneath. Spread pattern the required amount and pin to paper.
2. **TO SHORTEN** : Fold at the printed lines to form a pleat half the amount to be shortened, ie 1/2" (1.3cm) deep to shorten 1" (2.5cm).

Study Your Pattern Markings

3. **STRAIGHT GRAIN** : Place an even distance from selvage or a straight thread.
4. **FOLD** : Place on fold of fabric.
5. **LENGTHENING AND SHORTENING LINES**.
6. **SEAM ALLOWANCE** : 5/8" (1.5cm) unless otherwise stated.
7. **NOTCHES** : Match notches.
8. **CUTTING LINES** : Multi patterns have different cutting lines for different sizes.
9. **TAILOR-TACKS** : With double thread make two loose stitches forming loop through fabric layers and pattern leaving long ends. Cut loop to remove pattern. Snip thread between fabric layers. Leave tufts.

Cutting Layouts

Cutting Directions

FOR FOLDED AND DOUBLE LAYER FABRIC - Place fabric with right side inside and pin pattern on wrong side of fabric.

FOR SINGLE LAYER - Pin pattern on right side of fabric. NOTE: Pattern pieces may interlock more closely for smaller sizes. Cut notches out from cutting line.

BEFORE removing pattern from fabric, transfer all pattern markings using tailor tacks or dressmaking tracing paper.

10. **KEY**: pattern printed side down
11. **KEY**: pattern printed side up
12. **KEY**: Cut out all pieces except pieces that extend beyond folded fabric, then open out fabric and on RIGHT side of fabric, cut in positions as shown.
13. **KEY**: For with and without nap layouts ensure fabric is placed with nap or design running in same direction.

Before pinning to fabric, press tissue pattern with a warm dry iron to remove creases.

Sewing Directions

Fabric Key	Right Side	Wrong Side	Interfacing	Lining

Sew garment following **Sewing Directions**.

PIN or machine-baste seams matching notches.

STITCH 5/8" (1.5cm) seams unless otherwise stated.

PRESS seams open unless otherwise indicated, clipping when necessary so seams will lie flat.

14. **EASE-STITCH** or **GATHER** - Loosen needle tension slightly. With RIGHT side up, stitch 5/8" (1.5cm) from cut edge using a long stitch. Stitch again 1/4" (6mm) away in the seam allowance.

EDGE FINISH - Neaten raw edges of seams, hems and facings using one of the following methods.

15. Stitch 1/4" (6mm) from edge, turn under along stitching and stitch.
16. Zig-zag or overlock raw edges.

17. **INTERFACING** — Pin interfacing to WRONG side of fabric. Cut across corners that will be enclosed with seams. Machine-baste 1/2" (1.3cm) from cut edge. (Shown only on first illustration). Trim interfacing close to machine-basting. For FUSIBLE interfacing, follow manufacturer's directions.

18. **STAY-STITCH** —Stitch 1/2" (1.3cm) from cut edge, in direction of arrows: (Shown only in the first illustration).

LAYERING — Trim seam allowance in layers.

19. Layer enclosed seams
20. Trim corners
21. Clip inner curves
22. Notch outer curves

23. **UNDERSTITCH** —Press facing away from garment; press seam toward facing. Facing side up, understitch close to seam through facing and seam allowances.

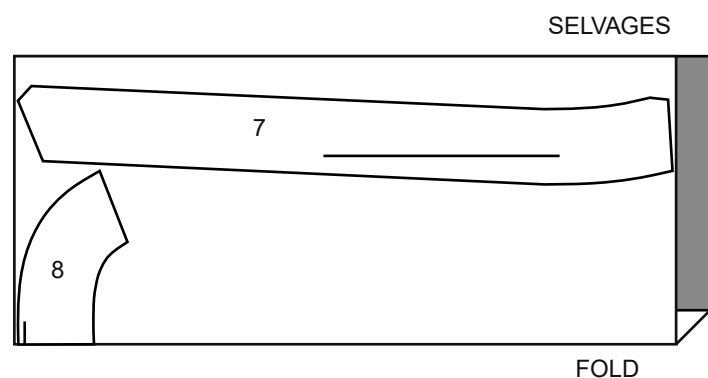
Cutting Layouts



INTERFACING A,B

USE PIECES 7 8

1 20" (51CM)

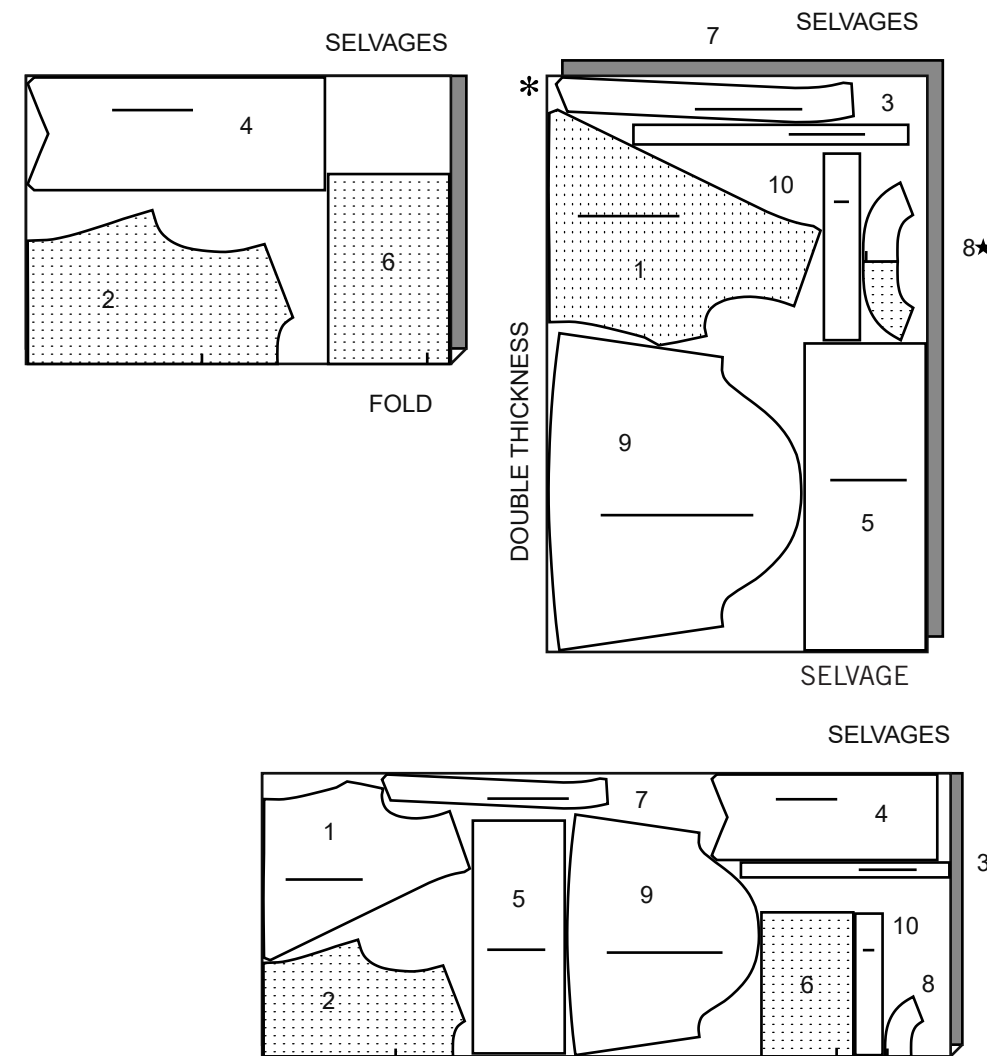


A

USE PIECES 1 2 3 4 5 6 7 8 9 10
PIECE 11 IS CUT OF RIBBON

2A 45" (115CM)
WITH NAP
CUT ONE OF PIECE 8

2B 60" (150CM)
WITH NAP



CUTTING LAYOUTS CONTINUED ON PAGE 2

Español

ENTRETELA A,B

USE LAS PIEZAS 7 8

1 20" (51CM)

A

USE LAS PIEZAS 1 2 3 4 5 6 7 8 9 10
PIEZA 11 SE CORTA DE ENCAJE

2A 45" (115CM)
CON PELUSA
CORTAR UNO DE LA PIEZA 8

2B 60" (150CM)
CON PELUSA

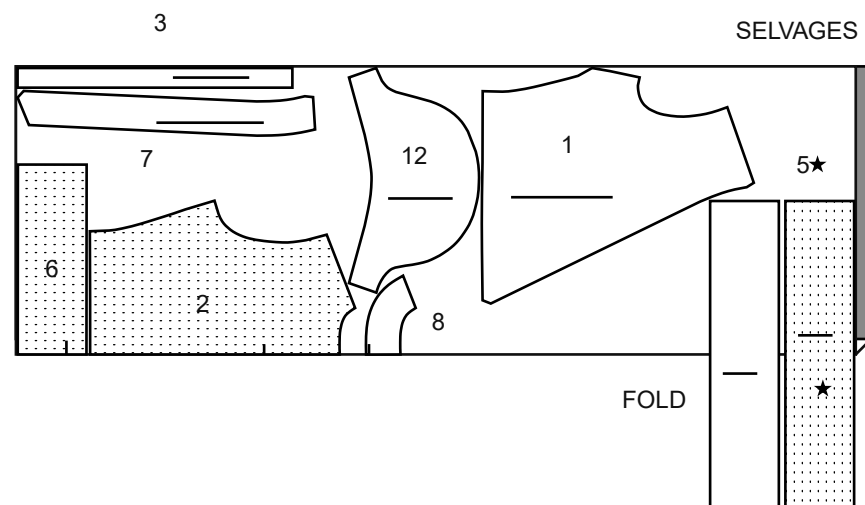
SELVAGES= ORILLAS=
FOLD= DOBLEZ
DOUBLE THICKNESS= ESPESOR DOBLE

VER LA PÁGINA 2 PARA MÁS DIAGRAMA DE CORTE

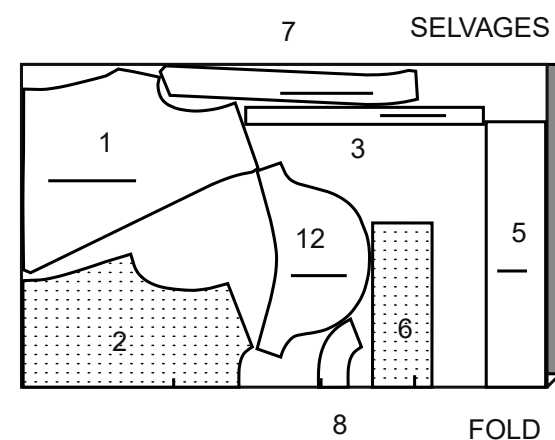
B

USE PIECES 1 2 3 5 6 7 8 12

3A 45" (115CM)
WITH NAP



3B 60" (150CM)
WITH NAP



B

USE LAS PIEZAS 1 2 3 5 6 7 8 12

3A 45" (115CM)
CON PELUSA

3B 60" (150CM)
CON PELUSA

GLOSSARY OF SEWING METHODS

Sewing methods shown in *ITALICS* are defined below:

DART- To make dart, with **RIGHT** sides together, fold the fabric through the center of the dart, bringing broken lines and small dots together. On **INSIDE**, place pins at **RIGHT** angles to the broken lines. Stitch the dart from wide end to point.

TIP- To prevent a "bubble" at the point, make the last few stitches right on the fold and leave the thread ends long enough to tie a knot. **DO NOT** back-stitch at the point.

Press the dart flat along the stitching to "blend" the stitches, then press dart as indicated in the Sewing Directions.

NARROW HEM- Press under hem allowance as indicated on tissue pattern. To form narrow hem, tuck under raw edge to meet crease. Press. Stitch hem in place.

PATTERN PIECES WILL BE IDENTIFIED BY NUMBERS THE FIRST TIME THEY ARE USED.

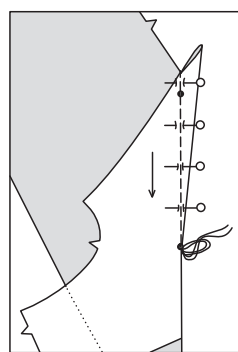
STITCH SEAMS WITH RIGHT SIDES TOGETHER UNLESS OTHERWISE STATED.

TOP A, B

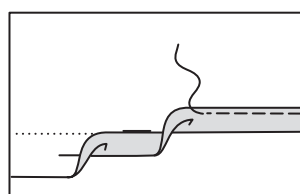
- 1. STAY-STITCH** neck edge of bodice front (1) sections. Make **DART**.
- 2. FOR VIEW A** - Fold collar (4) sections in half along fold line with **WRONG** sides together; press. Baste raw edges together. Stitch close to pressed edge.
- Cut a piece of lace the length of collar section. Pin lace to collar, centered between seam line and folded edge. Stitch lace in place 1/4" (6mm) from long edges; baste raw edges to collar.
- Pin **WRONG** side of collar to **RIGHT** side of bodice front sections, matching small dots and notches, having raw edges even. Baste shoulder, front and lower edges.

CONTINUE AS FOLLOWS FOR VIEWS A AND B

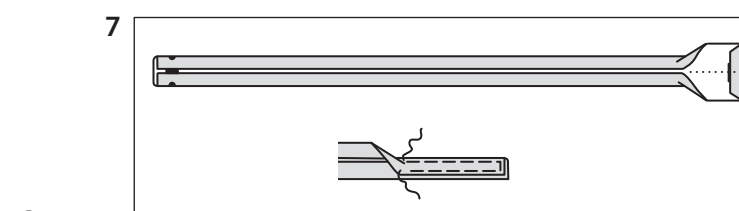
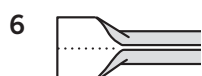
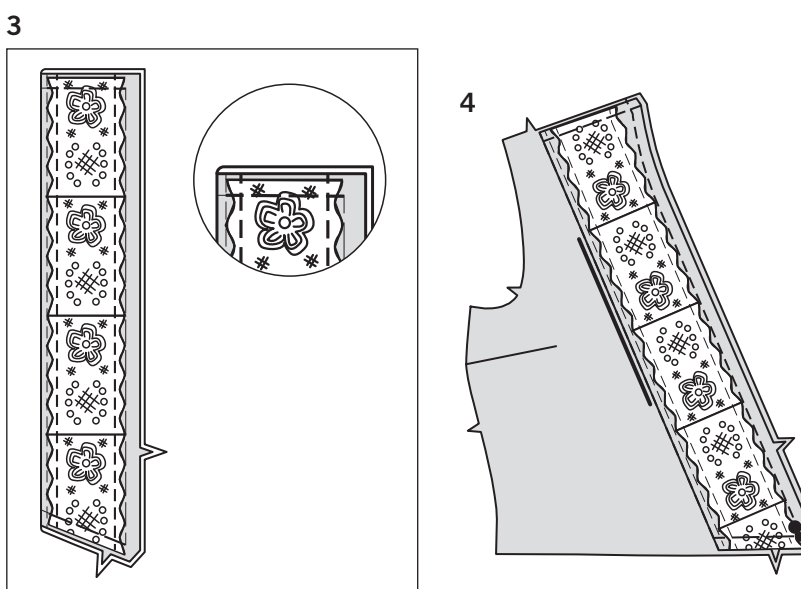
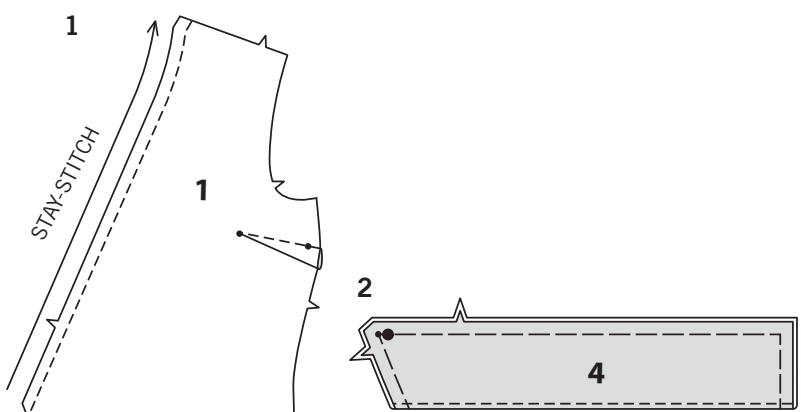
- Fold tie end (3) in half, lengthwise with **WRONG** sides together. Press, setting in a crease.
- Open out long edges of tie and turn them to **WRONG** side so that they meet at the crease. Press.



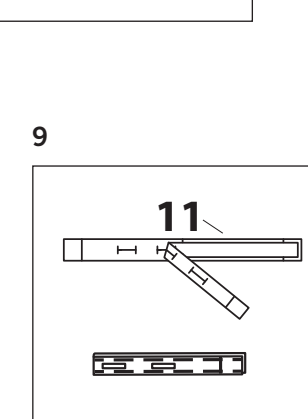
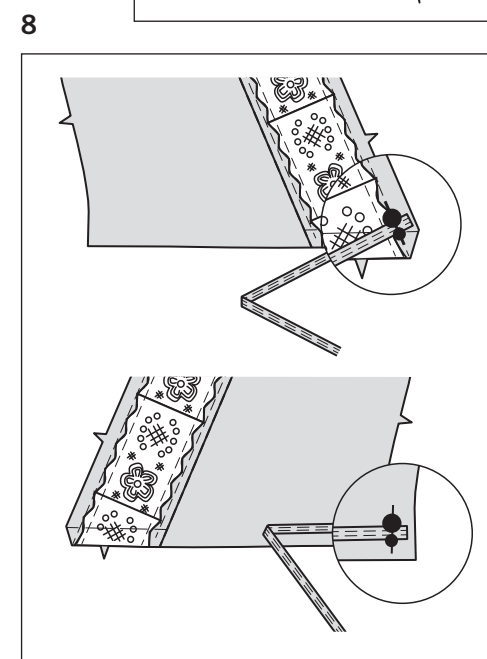
DART



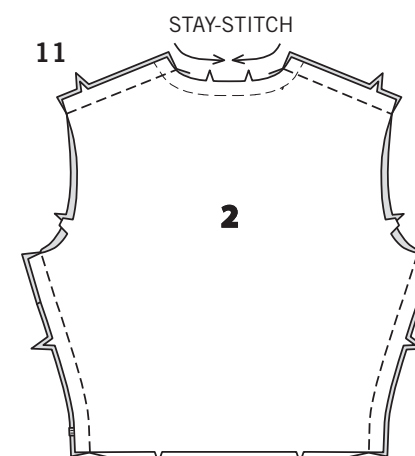
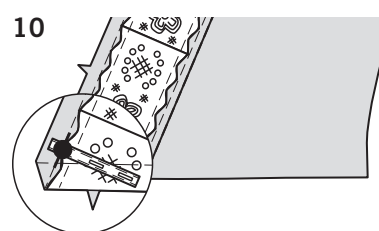
NARROW HEM



- Press under 3/8" (1 cm) on unmarked end. Fold tie in half lengthwise, bringing pressed edges together. Stitch close to long edges.

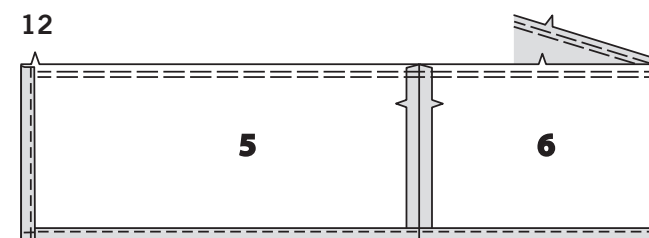


- On **OUTSIDE**, pin one tie to front edge of **RIGHT** bodice front (over collar for View A), matching small and large dots; baste. Pin remaining tie to side edge of **LEFT** bodice front, matching small and large dots; baste.
- Cut a piece of ribbon the length of guide for inside tab (11). Transfer markings. Fold tab in half along fold line. Stitch close to long edges. Make buttonholes at markings.

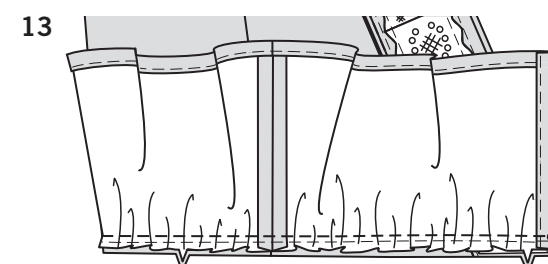


- On **OUTSIDE**, pin tab to front edge of **LEFT** bodice front (over collar for View A), centering end over large dot with raw edges even. Baste.

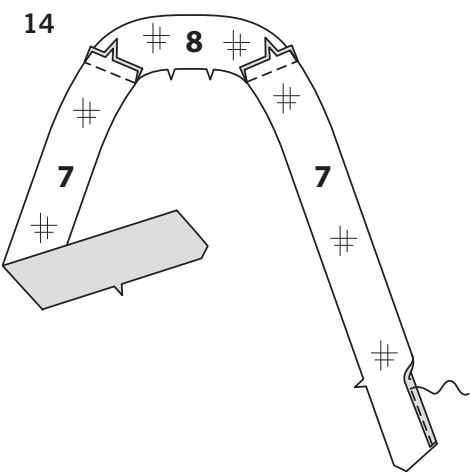
- 11. STAY-STITCH** neck edge of bodice back (2). Stitch bodice front to bodice back at shoulder and side seams.



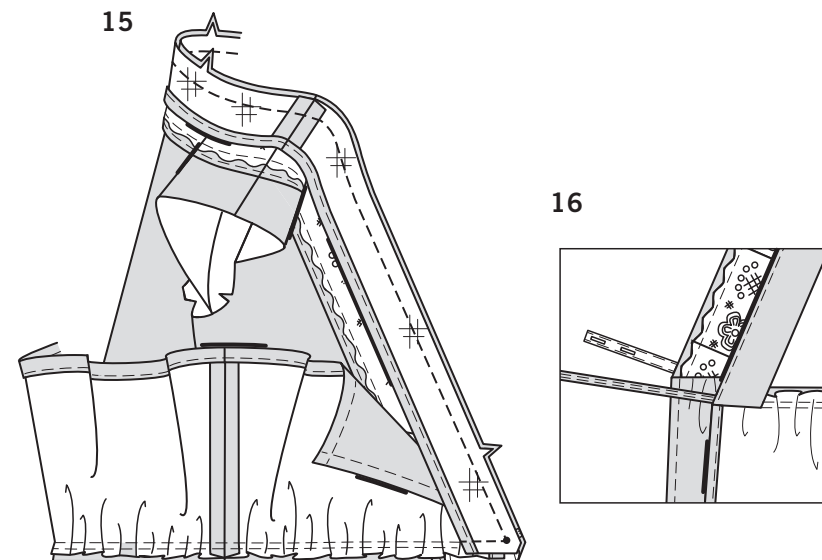
- Stitch peplum front (5) sections to peplum back (6) at side seams. **GATHER** upper edge between the front notches. **NARROW HEM** lower and front edges.



- With **RIGHT** sides together and raw edges even, pin peplum to bodice, matching small dots, notches, and seams. Pull up gathering stitches to fit. Distribute fullness evenly. Baste; stitch.



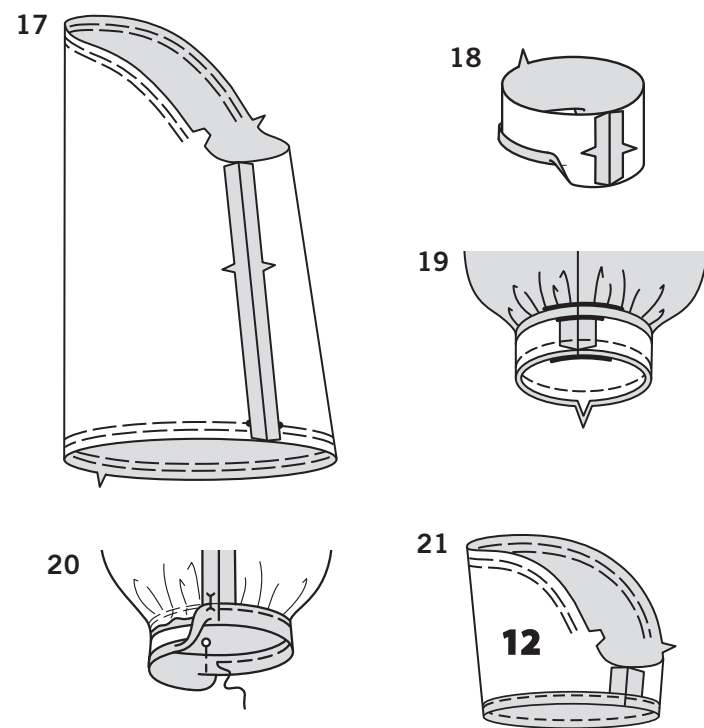
14. Apply **INTERFACING** to front facing (7) and back facing (8) sections. Stitch front facing to back facing at shoulder seams. **EDGE FINISH** unnotched edges.



15. On **OUTSIDE**, pin facing to front and neck edge (over peplum), matching centers, seams, and notches. Stitch neck and lower edge, being careful not to catch in side edges of peplum above seam line. **LAYER SEAM**.

16. **UNDERSTITCH** the facing as far as possible. Turn facing to **INSIDE**; press, pressing out the peplum, ties, and tab.

SLEEVE A



17. **GATHER** top of sleeve (9) between notches. Stitch underarm seam. **GATHER** lower edge of sleeve between large dots.

18. Stitch notched ends of sleeve band (10) together. Press under 5/8" (1.5 cm) on unmarked edge; trim to 3/8" (1 cm).

19. With **RIGHT** sides together, pin sleeve band to lower edge of sleeve, matching seams and large dots. Pull up gathering stitches to fit. Baste; stitch. **LAYER SEAM**. Press seam toward band.

20. On **INSIDE**, pin pressed edge of band over seam, placing pins on **OUTSIDE**. On **OUTSIDE**, stitch band close to seam, catching in pressed edge of band on **INSIDE**.

SLEEVE B

21. **GATHER** top of sleeve (12) between notches. Stitch underarm seam. **NARROW HEM** lower edge of sleeve.

CONTINUE AS FOLLOWS FOR VIEWS A AND B

22. Turn sleeve **RIGHT** side out. Hold bodice **WRONG** side out with armhole toward you. With **RIGHT** sides together, pin sleeve to armhole edge with center small dot at shoulder seam, matching underarm seams, notches and remaining small dots. Pull up gathering stitches to fit. To distribute fullness evenly, slide fabric along bobbin threads. Baste. Stitch. Stitch again 1/8" (3mm) from first stitching. Trim seam below notches close to stitching. Press only the seam allowance.

23. Sew button to **INSIDE** of **RIGHT** side seam at large dot. **Lap RIGHT front over LEFT front; button and tie when wearing.**

BLUSAS A, B

1. **HAGA PUNTADA DE SOSTEN** al borde del escote, de la sección frontal del corpiño (1). Haga la **PINZA**.

2. **PARA EL MODELO A – REVES CON REVES**, doble las secciones del cuello (4) a la mitad, a lo largo de la línea del dobléz; planche. Hilvane conjuntamente los bordes no terminados. Cosa cerca del borde doblado.

3. Corte un pedazo de encaje, de la longitud de la sección del cuello. Sujete con alfileres el encaje al cuello, centrándolo entre la línea de la costura y el borde doblado. Cosa el encaje en su lugar, a 1/4" (6mm) de los bordes largos; hilvane los bordes no terminados hasta el cuello.

4. Sujete con alfileres el **REVES** del cuello al lado **DERECHO**, de las secciones frontales del corpiño, casando los puntos pequeños y las muescas, emparejando los bordes no terminados. Hilvane los bordes de los hombros, del frente y de la parte inferior.

CONTINUE COMO SIGUE PARA LOS MODELOS A Y B

5. **REVES CON REVES**, doble el extremo del lazo (3) a la mitad y a lo largo. Planche, haciendo un pliegue.

6. Abra los bordes largos del lazo y voltéelos al **REVES**, de manera que se unan en el pliegue. Planche.

7. Planche un dobléz de 3/8" (1cm) sobre el extremo sin marcas. Doble el lazo a la mitad y a lo largo, llevando conjuntamente los bordes doblados. Cosa cerca de los bordes largos.

8. En el **EXTERIOR**, sujete con alfileres un lazo al borde frontal, del frente **DERECHO** del corpiño (sobre el cuello para el Modelo A), casando los puntos pequeños y grandes; hilvane. Sujete con alfileres el resto del lazo, al borde lateral frontal **IZQUIERDO** del corpiño, casando los puntos pequeños y grandes; hilvane.

9. Corte un pedazo de cinta, de la longitud de la guía para la lengüeta interior (11). Traslade las marcas. Doble la lengüeta a la mitad y a lo largo de la línea del dobléz. Cosa cerca de los bordes largos. Haga los ojales en las marcas.

10. En el **EXTERIOR**, sujete con alfileres la lengüeta al borde frontal del frente **IZQUIERDO** del corpiño (sobre el cuello para el Modelo A), centrando un extremo sobre el punto grande, con los bordes no terminados parejos. Hilvane.

11. **HAGA PUNTADA DE SOSTEN** al borde del escote trasero del corpiño (2). Cosa el frente a la espalda del corpiño, en las costuras de los hombros y las laterales.

12. Cosa las secciones del frente (5) a la parte trasera del péplum (6), en las costuras laterales. **FRUNZA** el borde superior entre las muescas frontales. Hacer un **DOBLADILLO ANGOSTO** a los bordes inferior y frontal.

13. **DERECHO CON DERECHO** y emparejados los bordes no terminados, sujete con alfileres el péplum al corpiño, casando los puntos pequeños, las muescas y las costuras. Hale de las costuras fruncidas para ajustarlas. Distribuya uniformemente la amplitud. Hilvane; cosa.

14. Aplique **ENTRETELA** a las secciones de la vista frontal (7) y de la trasera (8). Cosa la vista frontal a la trasera en las costuras de los hombros. **TERMINE EL BORDE** sin muescas.

15. En el **EXTERIOR**, sujete con alfileres la vista al borde frontal y del escote (sobre el péplum), casando los centros, las costuras y las muescas. Cosa el borde del escote y el inferior, teniendo cuidado de no agarrar los bordes laterales del péplum, por encima de la línea de la costura. **RECORTE LA COSTURA A DIFERENTES NIVELES**.

16. **HAGA PUNTADA OCULTA** a la vista y hasta donde sea posible. Voltee la vista al **INTERIOR**; planche, planchando hacia afuera el péplum, los lazos y ña lengüeta.

MANGA A

17. **FRUNZA** la parte superior de la manga (9) entre las muescas. Cosa la costura de debajo de los brazos. **FRUNZA** el borde inferior de la manga entre los puntos grandes.

18. Cosa conjuntamente los extremos con muescas de la banda de la manga (10). Planche un dobléz de 5/8" (1.5cm) sobre el borde sin marcas; recorte a 3/8" (1cm).

19. **DERECHO CON DERECHO**, sujete con alfileres la banda de la manga al borde inferior de la manga, casando las costuras y los puntos grandes. Hale de las costuras fruncidas para ajustarlas. Hilvane; cosa. **RECORTE LA COSTURA A DIFERENTES NIVELES**. Planche la costura hacia la banda.

20. En el **INTERIOR**, sujete con alfileres el borde doblado de la banda sobre la costura, colocando los alfileres en el **EXTERIOR**. En el **EXTERIOR**, cosa la banda cerca de la costura, agarrando el borde doblado de la banda en el **INTERIOR**.

MANGA B

21. **FRUNZA** la parte superior de la manga (12) entre las muescas. Cosa la costura de debajo de los brazos. Hacer un **DOBLADILLO ANGOSTO** al borde inferior de la manga.

CONTINUE COMO SIGUE PARA LOS MODELOS A Y B

22. Voltee la manga al lado **DERECHO**. Sostenga el corpiño al **REVES**, con la sisa hacia usted. **DERECHO CON DERECHO**, sujete con alfileres la manga al borde de la sisa, con el punto pequeño central en la costura de los hombros, casando las costuras de debajo de los brazos, las muescas y los puntos pequeños restantes. Hale de las costuras fruncidas para ajustarlas. Para distribuir uniformemente la amplitud, deslice la tela a lo largo de los hilos de la bobina. Hilvane. Cosa. Cosa de nuevo a 1/8" (3mm) de la puntada previa. Recorte la costura por debajo de las muescas y cerca de la puntada. Planche únicamente el margen de la costura.

23. Cosa el botón al **INTERIOR** de la costura lateral **DERECHA**, sobre el punto grande. **Cruce el frente DERECHO sobre el frente IZQUIERDO; abotone y haga el lazo cuando la use.**