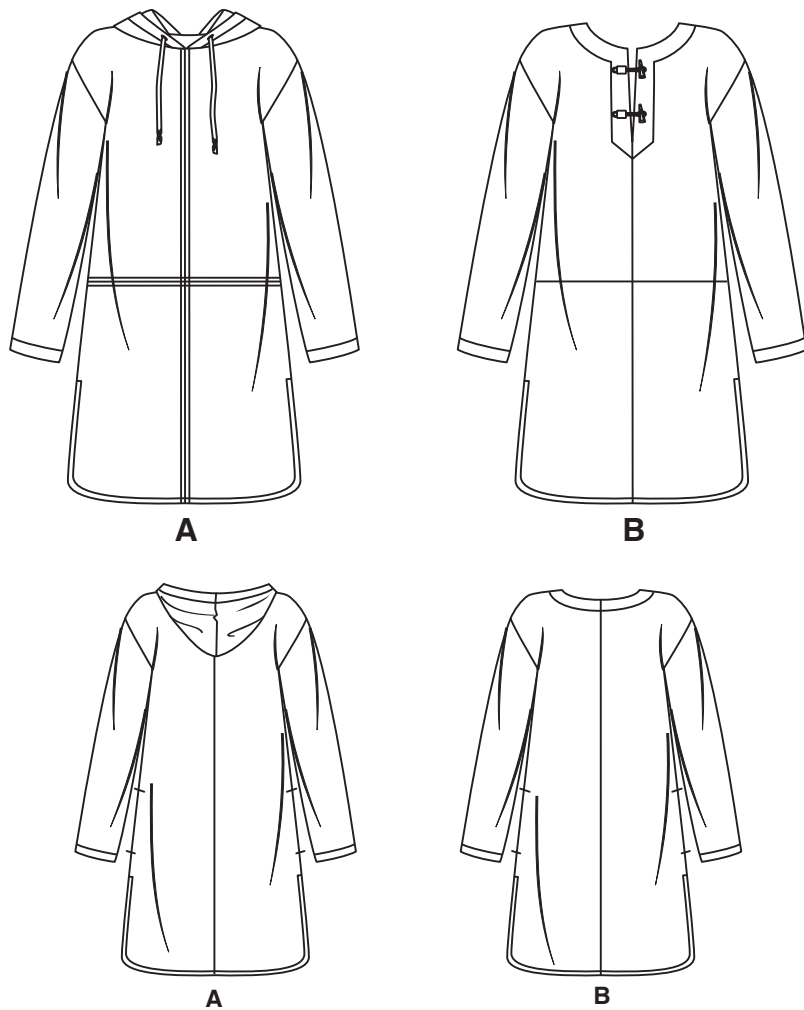


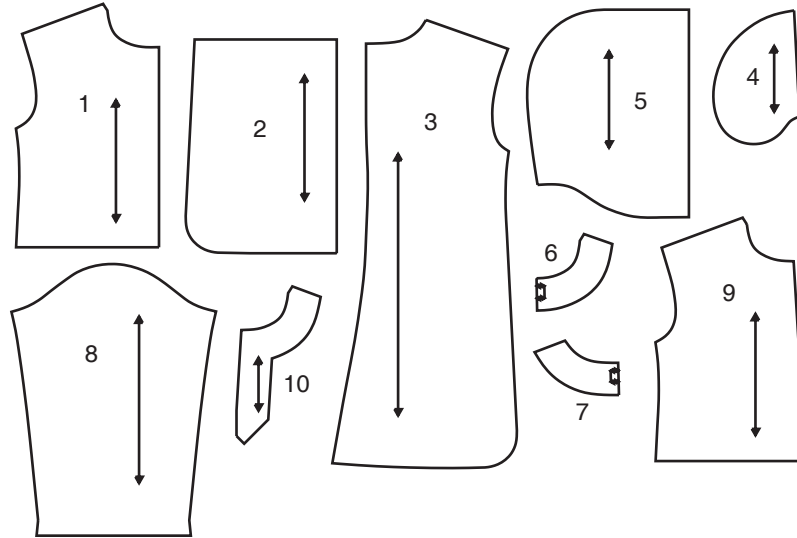
NEW LOOK® N6706

www.simplicity.com info@simplicity.com 1-888-588-2700

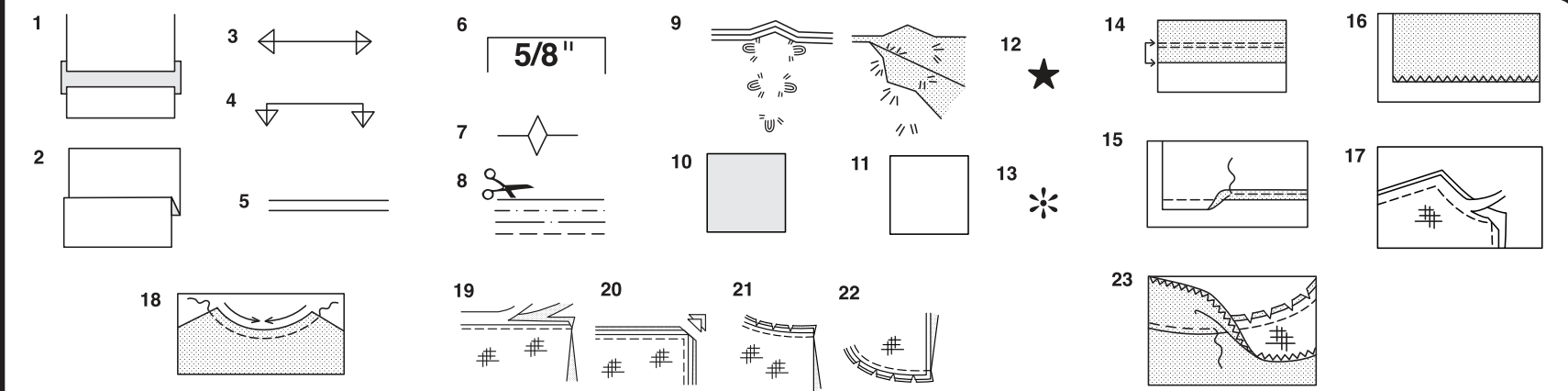
Thank you for purchasing this New Look pattern. We made every effort to provide you with a high quality product. Gracias por haber comprado este patrón de New Look. Hemos hecho todos los esfuerzos para ofrecerle un producto de alta calidad.



10 PIECES



- 1 UPPER FRONT - A
- 2 LOWER FRONT - A,B
- 3 BACK - A,B
- 4 POCKET - A,B
- 5 HOOD - A
- 6 FRONT FACING - A
- 7 BACK FACING - A,B
- 8 SLEEVE - A,B
- 9 UPPER FRONT - B
- 10 FRONT FACING - B



How To Use Your Multi Size Pattern

First Prepare Your Pattern

Select the pattern pieces according to the view you are making.

This pattern is made to body measurements with ease allowed for comfort and style. If your body measurements differ from those on the pattern envelope adjust the pieces before placing them on the fabric.

Check your back neck to waist and dress length, if necessary, alter the pattern. Lengthening and shortening lines are indicated.

1. **TO LENGTHEN** : Cut pattern between printed lines and place paper underneath. Spread pattern the required amount and pin to paper.
2. **TO SHORTEN** : Fold at the printed lines to form a pleat half the amount to be shortened, ie 1/2" (1.3cm) deep to shorten 1" (2.5cm).

Study Your Pattern Markings

3. **STRAIGHT GRAIN** : Place an even distance from selvage or a straight thread.
4. **FOLD** : Place on fold of fabric.
5. **LENGTHENING AND SHORTENING LINES.**
6. **SEAM ALLOWANCE** : 5/8" (1.5cm) unless otherwise stated.
7. **NOTCHES** : Match notches.
8. **CUTTING LINES** : Multi patterns have different cutting lines for different sizes.
9. **TAILOR-TACKS** : With double thread make two loose stitches forming loop through fabric layers and pattern leaving long ends. Cut loop to remove pattern. Snip thread between fabric layers. Leave tufts.

Cutting Layouts

Cutting Directions

FOR FOLDED AND DOUBLE LAYER FABRIC - Place fabric with right side inside and pin pattern on wrong side of fabric.

FOR SINGLE LAYER - Pin pattern on right side of fabric. NOTE: Pattern pieces may interlock more closely for smaller sizes. Cut notches out from cutting line.

BEFORE removing pattern from fabric, transfer all pattern markings using tailor tacks or dressmaking tracing paper.

10. **KEY:** pattern printed side down
11. **KEY:** pattern printed side up
12. **KEY:** Cut out all pieces except pieces that extend beyond folded fabric, then open out fabric and on RIGHT side of fabric, cut in positions as shown.
13. **KEY:** For with and without nap layouts ensure fabric is placed with nap or design running in same direction.

Before pinning to fabric, press tissue pattern with a warm dry iron to remove creases.

Sewing Directions

Fabric Key	Right Side	Wrong Side	Interfacing	Lining

Sew garment following Sewing Directions.

PIN or machine-baste seams matching notches.

STITCH 5/8" (1.5cm) seams unless otherwise stated.

PRESS seams open unless otherwise indicated, clipping when necessary so seams will lie flat.

14. **EASE-STITCH** or **GATHER** - Loosen needle tension slightly. With RIGHT side up, stitch 5/8" (1.5cm) from cut edge using a long stitch. Stitch again 1/4" (6mm) away in the seam allowance.

EDGE FINISH - Neaten raw edges of seams, hems and facings using one of the following methods.

15. Stitch 1/4" (6mm) from edge, turn under along stitching and stitch.
16. Zig-zag or overlock raw edges.

17. **INTERFACING** — Pin interfacing to WRONG side of fabric. Cut across corners that will be enclosed with seams. Machine-baste 1/2" (1.3cm) from cut edge. (Shown only on first illustration). Trim interfacing close to machine-basting. For FUSIBLE interfacing, follow manufacturer's directions.

18. **STAY-STITCH** —Stitch 1/2" (1.3cm) from cut edge, in direction of arrows: (Shown only in the first illustration).

LAYERING — Trim seam allowance in layers.

19. Layer enclosed seams
20. Trim corners
21. Clip inner curves
22. Notch outer curves

23. **UNDERSTITCH** —Press facing away from garment; press seam toward facing. Facing side up, understitch close to seam through facing and seam allowances.

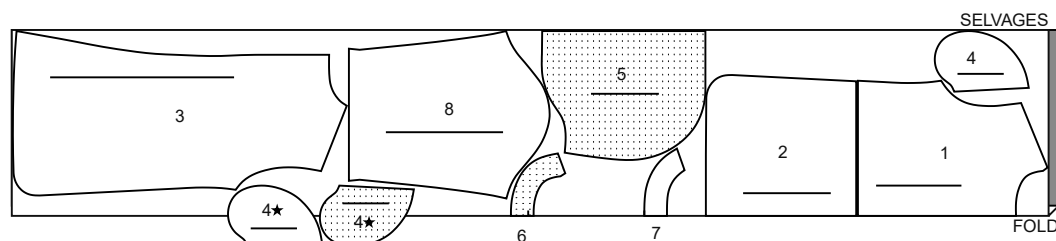
Cutting Layouts



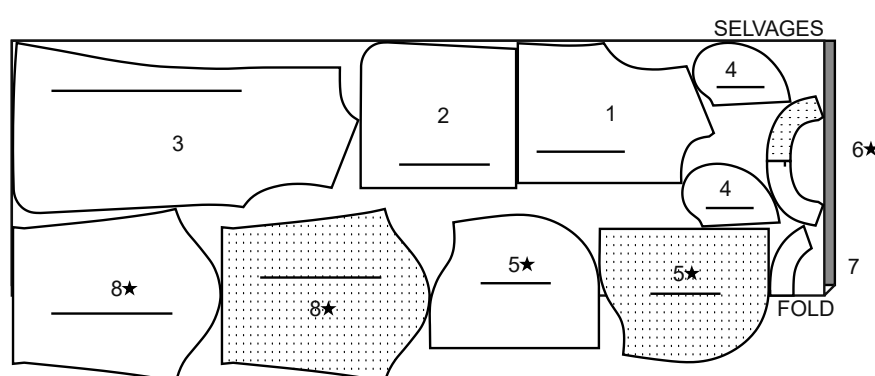
A JACKET

USE PIECES 1 2 3 4 5 6 7 8

1A 44" 45" (115CM) WITH NAP



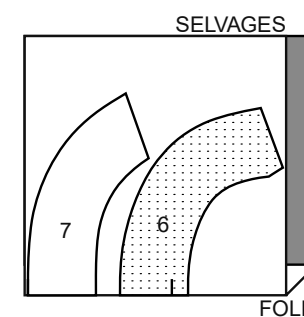
1B 58" 60" (150CM) WITH NAP



INTERFACING

USE PIECES 6 7

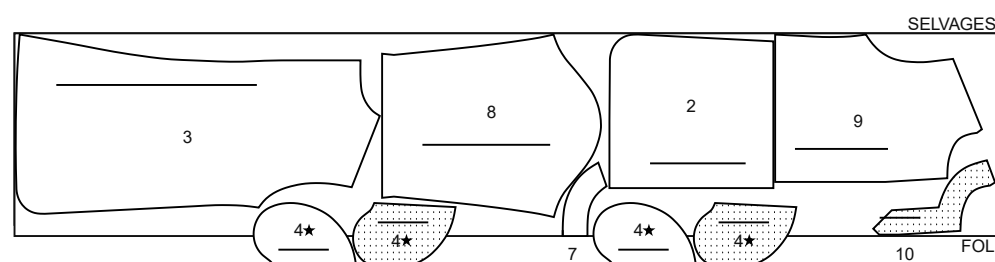
1C 20" TO 25" (51CM TO 64CM) LIGHTWEIGHT FUSIBLE



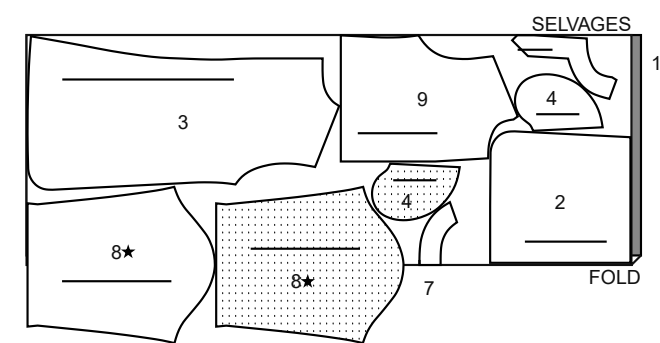
B JACKET

USE PIECES 2 3 4 7 8 9 10

2A 44" 45" (115CM) WITH NAP



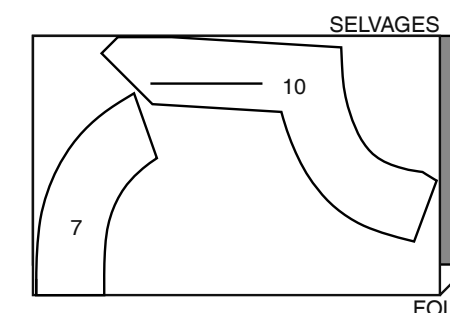
2B 58" 60" (150CM) WITH NAP



INTERFACING

USE PIECES 7 10

2C 20" TO 25" (51CM TO 64CM) LIGHTWEIGHT FUSIBLE



Español

A CHAQUETA

USE LAS PIEZAS 1 2 3 4 5 6 7 8

1A 44" 45" (115CM) CON PELUSA

1B 58" 60" (150CM) CON PELUSA

ENTRETELA

USE LAS PIEZAS 6 7

1C 20" A 25" (51CM A 64CM) ADHESIVA LIGERA

B CHAQUETA

USE LAS PIEZAS 2 3 4 7 8 9 10

2A 44" 45" (115CM) CON PELUSA

2B 58" 60" (150CM) CON PELUSA

ENTRETELA

USE LAS PIEZAS 7 10

2C 20" A 25" (51CM A 64CM) ADHESIVA LIGERA

SELVAGES= ORILLAS
FOLD= DOBLEZ

SIMPLY THE BEST TECHNIQUES FOR SEWING FLEECE

- Fleece fabric is strong, hard to puncture or tear and doesn't ravel or get pilly.
- Since cut edges of fleece fabrics do not ravel, inner edges of seams and hems can be left raw.
- When pinning pieces together, use long pins...the kind with bead heads are best because short pins tend to get lost in the fleece.
- When stitching, try using a narrow zig-zag stitch, adjusting the width and length for the type of fleece you are using. Always test first on some scraps and keep for reference.
- Sew slowly and carefully the first time you stitch a seam as stitches are hard to remove.
- To prevent shoulder seams from stretching, pin center of hem tape or twill tape along seam line on front shoulder edges, then stitch the shoulder seams.
- When sewing around shaped areas sew slowly being careful not to stretch the fleece as you feed fabric through your machine.
- Finger press or steam press on a low temperature setting using a press cloth.
- Raw edges can also be cut with pinking shears.
- Stitch hems in place 1/4" (6mm) from raw edge.

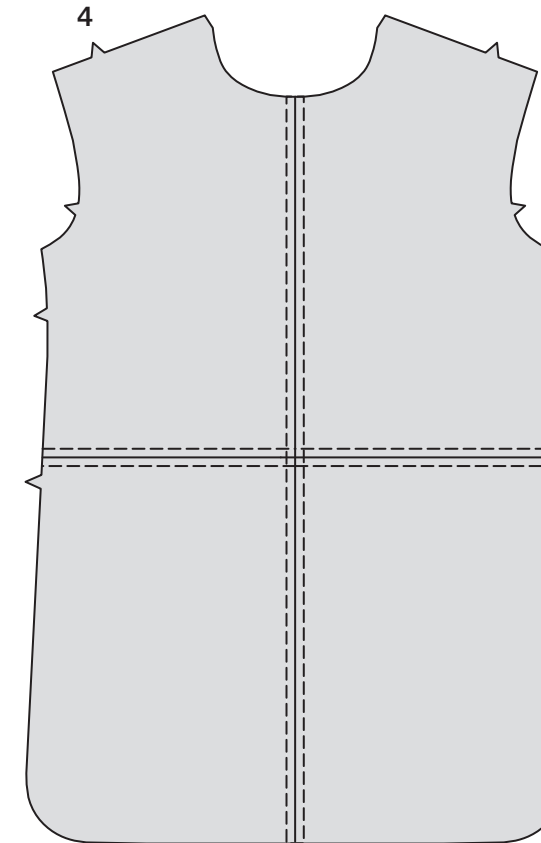
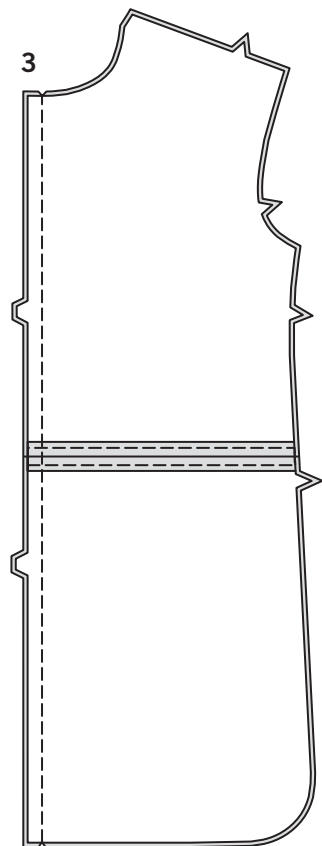
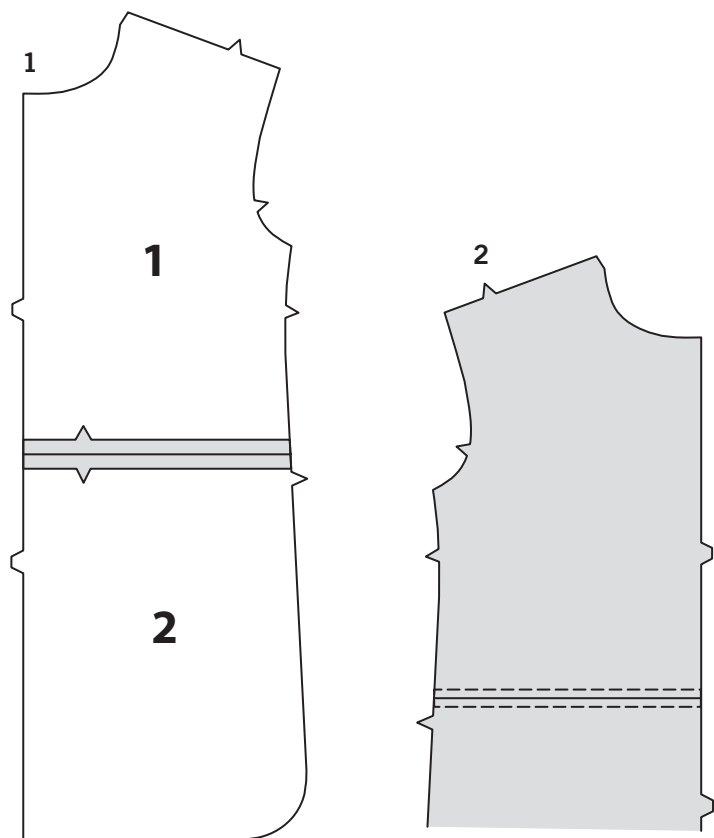
PATTERN PIECES WILL BE IDENTIFIED BY NUMBERS THE FIRST TIME THEY ARE USED.

STITCH SEAMS WITH RIGHT SIDES TOGETHER UNLESS OTHERWISE STATED.

JACKET A, B**FRONT, BACK AND POCKET****VIEW A**

1. With RIGHT sides together, pin upper front (1) to upper edge of lower front (2), matching notches. Stitch.
2. Top-stitch 1/4" (6mm) above and below seam.

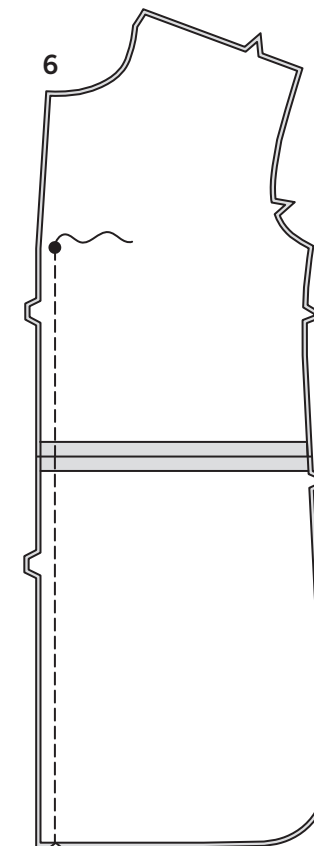
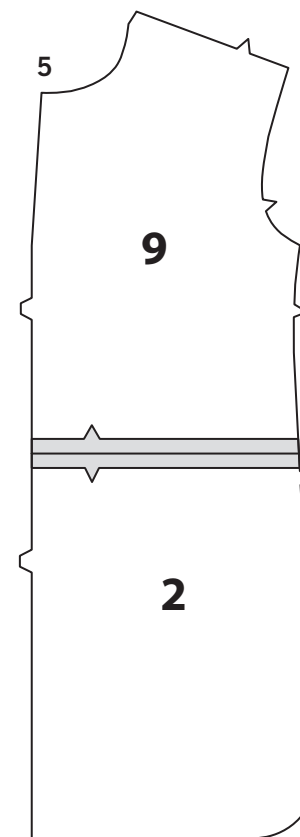
3. With RIGHT sides together, stitch front sections at center front seam, matching waist seams.



4. Top-stitch each side of center front seam in same manner as waist seam.

VIEW B

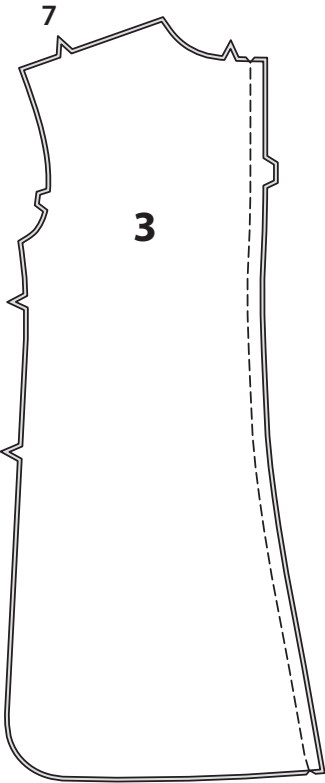
5. With RIGHT sides together, pin upper front (9) to upper edge of lower front (2), matching notches. Stitch.



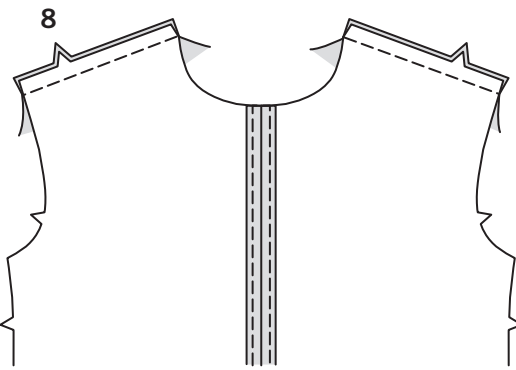
6. With RIGHT sides together, stitch front sections at center front seam, leaving open above large dot.

CONTINUE AS FOLLOWS FOR A, B

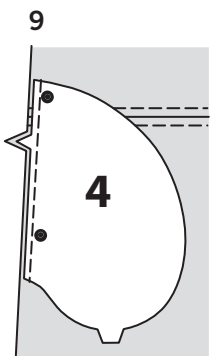
7. Stitch center back seam of back (3).



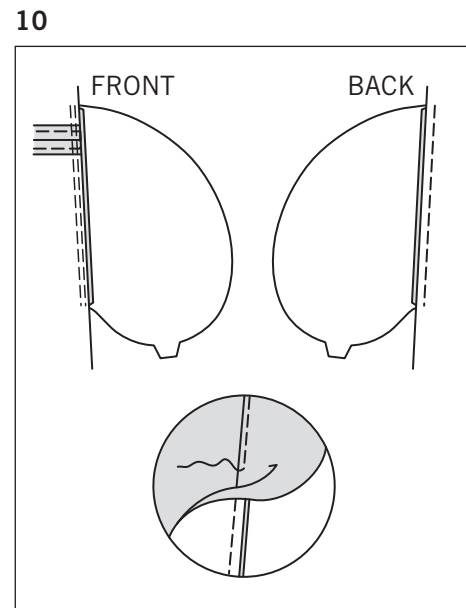
8. Stitch front to back at shoulders.



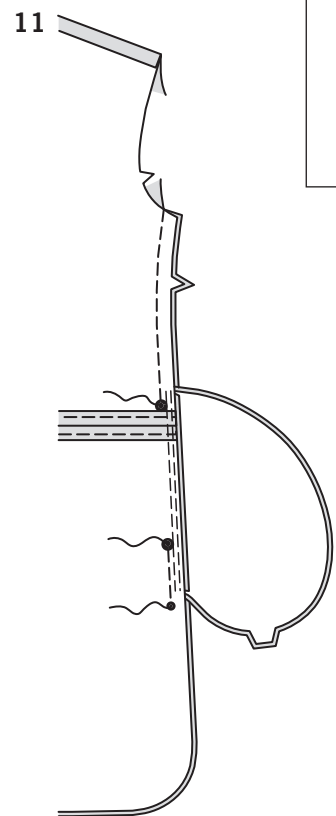
9. Pin pocket (4) sections to side edges of front and back sections, matching large dots and having raw edges even. Stitch in a 3/8" (1cm) seam.



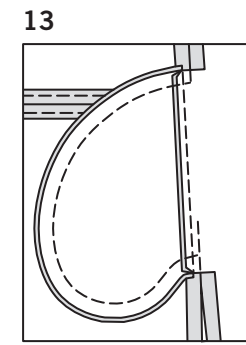
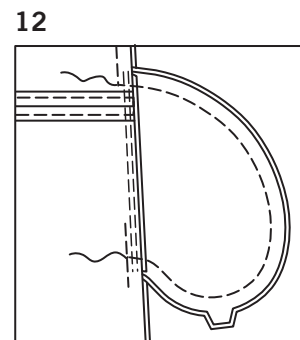
10. Press seam toward pocket, pressing pocket out. UNDERSTITCH front pocket.



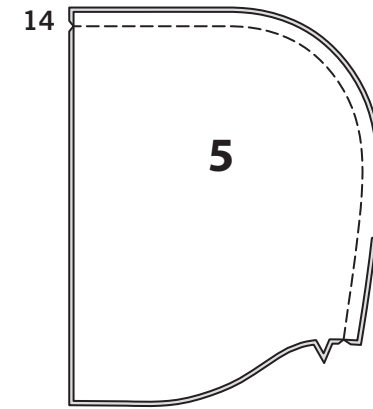
11. With RIGHT sides together, pin front to back at side seams, matching large dots. Stitch side seams, leaving an opening between large dots, back stitching at large dots to reinforce seam and leaving open below small dots.



12. Stitch pocket edges together between the side seams.

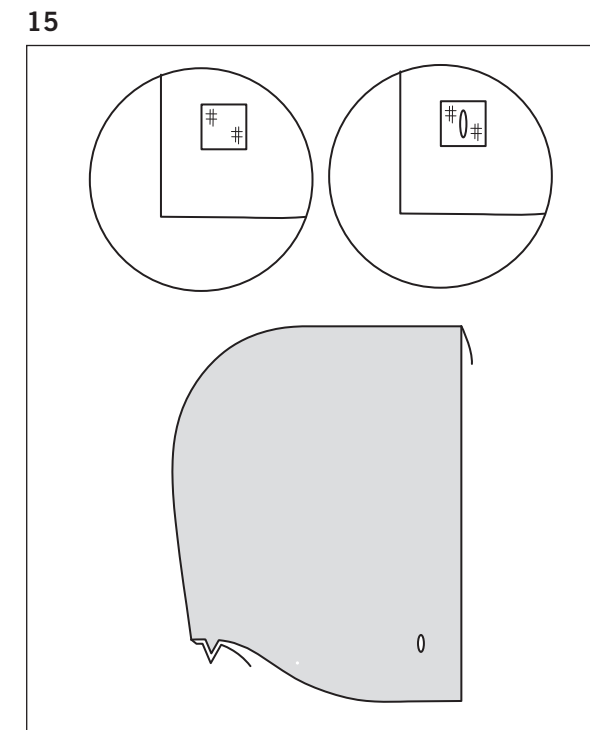


13. Clip back seam allowances at ends of pockets. Press pocket towards front.

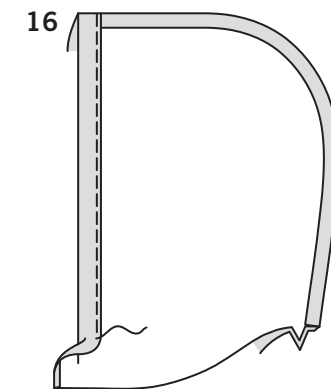


HOOD A

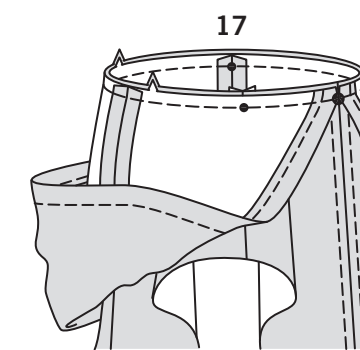
14. With RIGHT sides together, pin center back seam of hood (5), matching notches. Stitch.



15. Make buttonholes in hood at markings. **TIP-** To reinforce buttonhole area, on INSIDE, apply a remnant of fusible interfacing over buttonhole marking. Make buttonhole as directed.



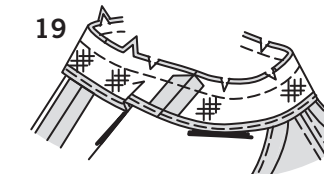
16. Press front edge of hood to INSIDE along foldline, forming casing. Press under 1/4" (6mm) on raw edge. Stitch close to inner edge of casing.



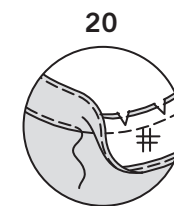
17. With RIGHT sides together, pin hood to neck edge, matching notches and dots, placing small dots at shoulder seam. Baste.



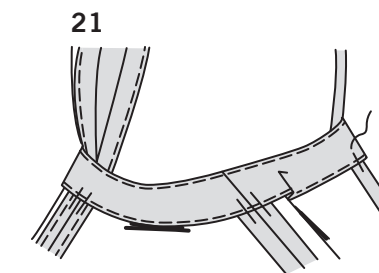
18. Apply fusible interfacing to WRONG side of front facing (6) and back facing (7) sections, following manufacturer's directions. Stitch shoulder seams of facing sections. **FINISH** unnotched edge.



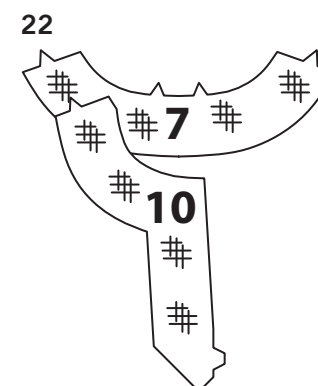
19. With RIGHT sides together, pin facing to neck edge (over hood), matching centers and shoulder seams. Stitch neck edge. Trim seam; clip curves.



20. UNDERSTITCH facing.

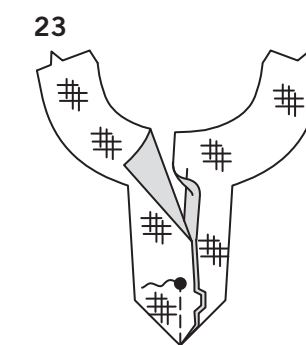


21. Turn facing to INSIDE; press. Tack facing at seams.



FACING B

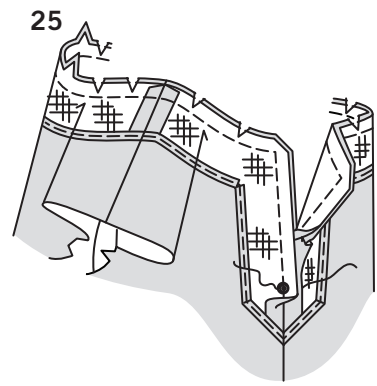
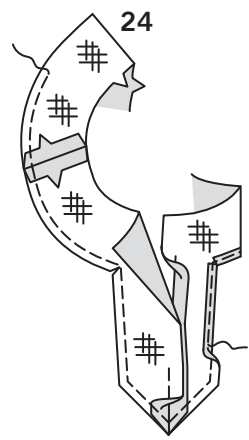
22. Apply fusible interfacing to WRONG side of front facing (10) and back facing (7) sections, following manufacturer's directions.



23. Stitch center front seam of front facing, leaving open above large dot.

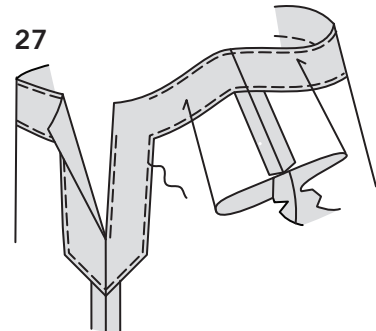
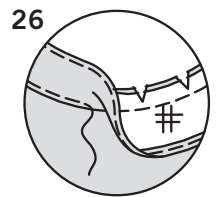
N6706

4 of 4



24. Stitch shoulder seams of facing sections.
FINISH unnotched edge.

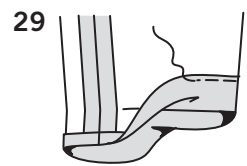
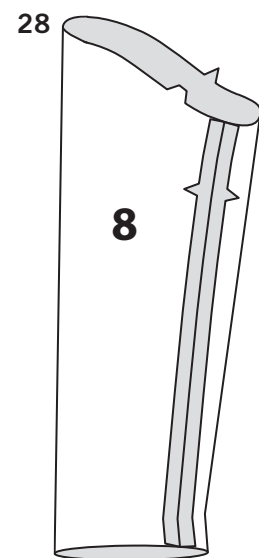
25. Pin facing to neck edge, matching centers, large dots and shoulder seams.
Stitch neck and opening edges, starting and stopping at large dot.
Trim seam; clip curves.



26. **UNDERSTITCH** facing as far as possible.

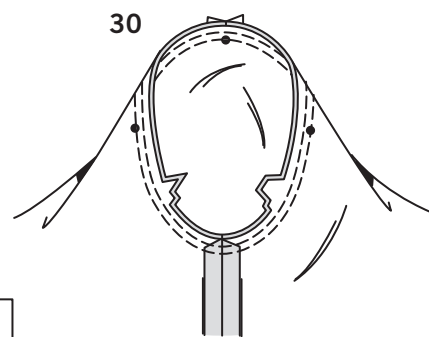
27. Turn facing to **INSIDE**; press. Baste close to inner finished edges of facing. On **OUTSIDE**, top-stitch as basted.

CONTINUE AS FOLLOWS FOR A, B



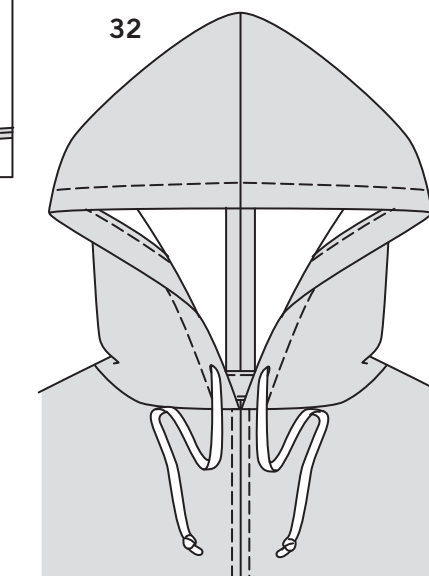
28. Stitch underarm seam in sleeve (8).

29. Press up sleeve hem.
Press under 1/4" (6mm) on raw edge.
Stitch close to inner pressed edge.



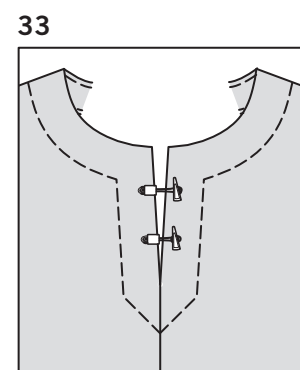
30. With right sides together, pin sleeve into armhole, placing center small dot at shoulder seam, matching underarm seams, notches and remaining small dots. Baste. Stitch. Stitch again 1/4" (6mm) away in seam allowance. Trim close to stitching between notches. Press seam allowances flat. Turn seam toward sleeve.

31. To hem side opening and lower edges, stitch 1/4" (6mm) from curved edge using long machine stitches.
Turn up 5/8" (1.5cm) at side and lower edge, turning in 1/4" (6mm) on raw edge. Pull threads to ease in fullness. Stitch, squaring stitches at side above small dots.



32. FOR A: Insert twill tape through buttonholes in hood casing, extending ends evenly. Knot ends. Adjust to fit.

33. FOR B: Sew toggle closures to front opening edges at small circles.



Español

CHAQUETAS A, B

FRENTE, ESPALDA Y BOLSILLOS

MODELO A

- DERECHO CON DERECHO, sujete con alfileres el frente superior (1), al borde superior frontal inferior (2), casando las muescas. Cosa.
- Haga puntada de adorno de 1/4" (6mm), por encima y por debajo de la costura.
- DERECHO CON DERECHO, cosa las secciones frontales en la costura frontal central, casando las costuras de la cintura.
- Haga puntada de adorno, a cada lado de la costura frontal central, de la misma manera que para la costura de la cintura.

MODELO B

- DERECHO CON DERECHO, sujete con alfileres el frente superior (9), al borde superior frontal inferior (2), casando las muescas. Cosa.
- DERECHO CON DERECHO, cosa las secciones frontales en la costura frontal central, dejando una abertura por encima del punto grande.

CONTINUE COMO SIGUE PARA A, B

- Cosa la costura trasera central de la espalda (3).
- Cosa el frente a la espalda en las costuras de los hombros.
- Sujete con alfileres las secciones del bolsillo (4), a los bordes laterales de las secciones frontal y de la espalda, casando los puntos grandes y emparejando los bordes no terminados. Cosa en una costura de 3/8" (1cm).
- Planche la costura hacia el bolsillo y el bolsillo hacia afuera. **HAGA PUNTADA OCULTA** al bolsillo frontal.
- DERECHO CON DERECHO, sujete con alfileres el frente a la espalda en las costuras laterales, casando los puntos grandes. Cosa las costuras laterales, dejando una abertura entre los puntos grandes, retrocediendo la puntada y cosiendo en los puntos grandes, para reforzar la costura y dejando abierto por debajo de los puntos pequeños.
- Cosa conjuntamente los bordes del bolsillo, entre las costuras laterales.
- Haga cortes a los márgenes de la costura traseros, en los extremos de los bolsillos.
Planche el bolsillo hacia el frente.

CAPUCHA A

- DERECHO CON DERECHO, sujete con alfileres la costura trasera central de la capucha (5), casando las muescas. Cosa.
- Haga los ojales en la capucha y sobre las marcas.
CONSEJO – Para reforzar el área del ojal, en el **INTERIOR**, aplique un retazo de entretela adhesiva, sobre las marcas del ojal. Haga el ojal como se indica.
- Planche el borde frontal de la capucha al **INTERIOR** y a lo largo de la línea del dobléz, formando la jareta. Planche un dobléz de 1/4" (6mm) sobre el borde no terminado. Cosa cerca del borde interior de la jareta.

17. DERECHO CON DERECHO, sujete con alfileres la capucha al borde del escote, casando las muescas y los puntos, colocando los puntos pequeños en la costura de los hombros. Hilvane.

18. Aplique entretela adhesiva, al **REVES** de las secciones de la vista frontal (6) y de la trasera (7), siguiendo las instrucciones del fabricante. Cosa las costuras de los hombros, de las secciones de la vista. **TERMINE** el borde sin muescas.

19. DERECHO CON DERECHO, sujete con alfileres la vista al borde del escote (sobre la capucha), casando las costuras centrales y las de los hombros. Cosa el borde del escote. Recorte la costura; haga cortes a lo largo de las curvas.

20. **HAGA PUNTADA OCULTA** a la vista.

21. Voltee la vista al **INTERIOR**; planche. Cosa la vista en las costuras.

VISTA B

22. Aplique entretela adhesiva, al **REVES** de las secciones de la vista frontal (10) y de la trasera (7), siguiendo las instrucciones del fabricante.

23. Cosa la costura frontal central de la vista frontal, dejando una abertura por encima del punto grande.

24. Cosa las costuras de los hombros, de las secciones de la vista. **TERMINE** el borde sin muescas.

25. Sujete con alfileres la vista al borde del escote, casando los centros, los puntos grandes y las costuras de los hombros. Cosa los bordes del escote y los abiertos, comenzando y deteniéndose en el punto grande. Recorte la costura; haga cortes a lo largo de las curvas.

26. **HAGA PUNTADA OCULTA** a la vista y hasta donde sea posible.

27. Voltee la vista al **INTERIOR**, planche. Hilvane cerca de los bordes terminados interiores de la vista. En el **EXTERIOR**, haga puntada de adorno como hilvanado.

CONTINUE COMO SIGUE PARA A, B

- Cosa la costura de debajo de los brazos en la manga (8).
- Planche hacia arriba el dobladillo de la manga. Planche un dobléz de 1/4" (6mm) sobre el borde no terminado. Cosa cerca del borde doblado interior.
- DERECHO CON DERECHO, sujete con alfileres la manga dentro de la sisa, colocando el punto pequeño central en la costura de los hombros, casando las costuras de debajo de los brazos, las muescas y los puntos pequeños restantes. Hilvane. Cosa. Cosa de nuevo a 1/4" (6mm), aparte en el margen de la costura. Recorte cerca de la puntada entre las muescas. Planche los márgenes de la costura planos. Voltee la costura hacia la manga.
- Para dobladillar la abertura lateral y los bordes inferiores, cosa a 1/4" (6mm) del borde curvo, usando una puntada larga de la máquina. Voltee hacia arriba a 5/8" (1.5cm), en el borde lateral y el inferior, volteando a 1/4" (6mm) sobre el borde no terminado. Hale de las costuras fruncidas a lo largo de la amplitud. Cosa, girando las costuras en los lados y por encima de los puntos pequeños.
- PARA A:** Inserte una cinta de sarga a través de los ojales en la jareta de la capucha, extendiendo los extremos de manera uniforme. Anude los extremos. Ajústelos a la medida.
- PARA B:** Cosa los cierres de palanca, a los bordes abiertos frontales en los círculos pequeños.