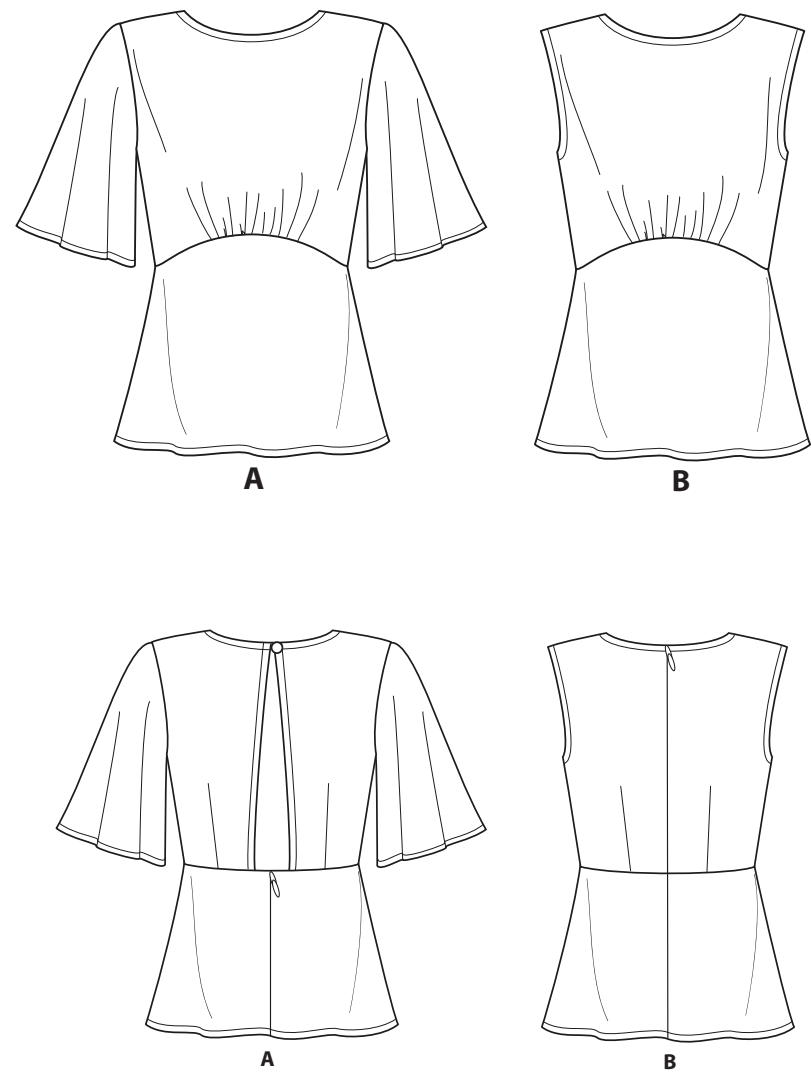


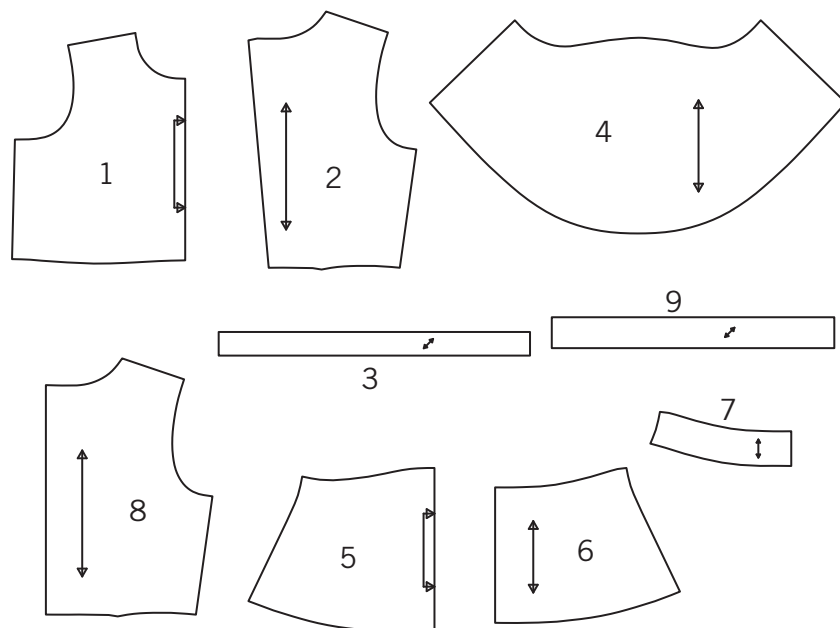
NEW LOOK® N6656

www.simplicity.com info@simplicity.com 1-888-588-2700

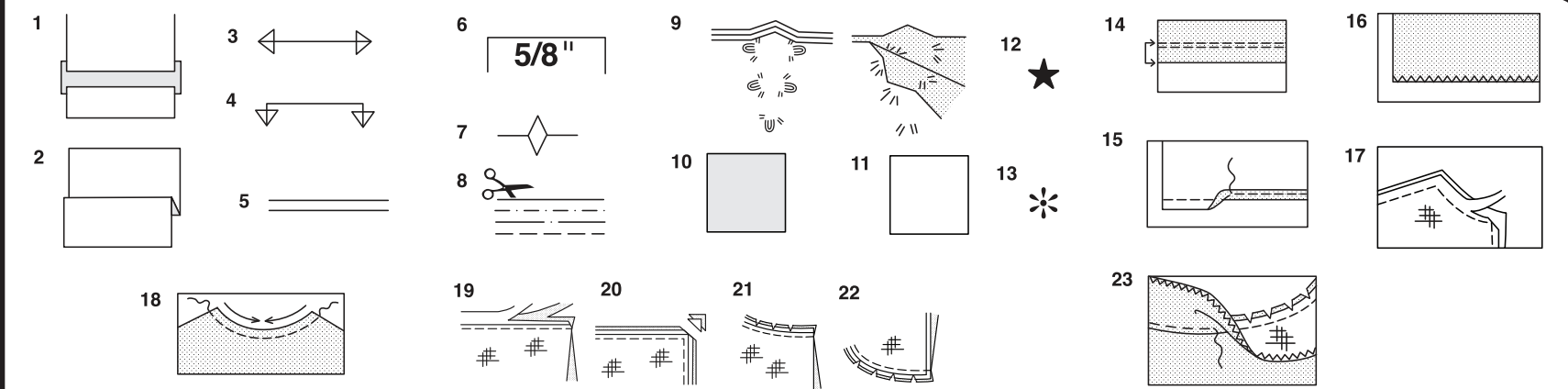
Thank you for purchasing this New Look pattern. We made every effort to provide you with a high quality product. Gracias por haber comprado este patrón de New Look. Hemos hecho todos los esfuerzos para ofrecerle un producto de alta calidad.



9 PIECES GIVEN



- 1-BODICE FRONT -A,B
- 2-BODICE BACK -A
- 3-NECK FACING -A,B
- 4-SLEEVE -A
- 5-FRONT -A,B
- 6-BACK -A,B
- 7-LOWER BACK FACING -A
- 8-BODICE BACK -B
- 9-ARMHOLE FACING -B



How To Use Your Multi Size Pattern

First Prepare Your Pattern

Select the pattern pieces according to the view you are making.

This pattern is made to body measurements with ease allowed for comfort and style. If your body measurements differ from those on the pattern envelope adjust the pieces before placing them on the fabric.

Check your back neck to waist and dress length, if necessary, alter the pattern. Lengthening and shortening lines are indicated.

1. **TO LENGTHEN** : Cut pattern between printed lines and place paper underneath. Spread pattern the required amount and pin to paper.
2. **TO SHORTEN** : Fold at the printed lines to form a pleat half the amount to be shortened, ie 1/2" (1.3cm) deep to shorten 1" (2.5cm).

Study Your Pattern Markings

3. **STRAIGHT GRAIN** : Place an even distance from selvage or a straight thread.
4. **FOLD** : Place on fold of fabric.
5. **LENGTHENING AND SHORTENING LINES.**
6. **SEAM ALLOWANCE** : 5/8" (1.5cm) unless otherwise stated.
7. **NOTCHES** : Match notches.
8. **CUTTING LINES** : Multi patterns have different cutting lines for different sizes.
9. **TAILOR-TACKS** : With double thread make two loose stitches forming loop through fabric layers and pattern leaving long ends. Cut loop to remove pattern. Snip thread between fabric layers. Leave tufts.

Cutting Layouts

Cutting Directions

FOR FOLDED AND DOUBLE LAYER FABRIC - Place fabric with right side inside and pin pattern on wrong side of fabric.

FOR SINGLE LAYER - Pin pattern on right side of fabric. NOTE: Pattern pieces may interlock more closely for smaller sizes. Cut notches out from cutting line.

BEFORE removing pattern from fabric, transfer all pattern markings using tailor tacks or dressmaking tracing paper.

10. **KEY:** pattern printed side down
11. **KEY:** pattern printed side up
12. **KEY:** Cut out all pieces except pieces that extend beyond folded fabric, then open out fabric and on RIGHT side of fabric, cut in positions as shown.
13. **KEY:** For with and without nap layouts ensure fabric is placed with nap or design running in same direction.

Before pinning to fabric, press tissue pattern with a warm dry iron to remove creases.

Sewing Directions

Fabric Key	Right Side	Wrong Side	Interfacing	Lining

Sew garment following **Sewing Directions.**

PN or machine-baste seams matching notches.

STITCH 5/8" (1.5cm) seams unless otherwise stated.

PRESS seams open unless otherwise indicated, clipping when necessary so seams will lie flat.

14. **EASE-STITCH** or **GATHER** - Loosen needle tension slightly. With **RIGHT** side up, stitch 5/8" (1.5cm) from cut edge using a long stitch. Stitch again 1/4" (6mm) away in the seam allowance.

EDGE FINISH - Neaten raw edges of seams, hems and facings using one of the following methods.

15. Stitch 1/4" (6mm) from edge, turn under along stitching and stitch.
16. Zig-zag or overlock raw edges.

17. **INTERFACING** — Pin interfacing to **WRONG** side of fabric. Cut across corners that will be enclosed with seams. Machine-baste 1/2" (1.3cm) from cut edge. (Shown only on first illustration). Trim interfacing close to machine-basting. For **FUSIBLE** interfacing, follow manufacturer's directions.

18. **STAY-STITCH** —Stitch 1/2" (1.3cm) from cut edge, in direction of arrows: (Shown only in the first illustration).

LAYERING — Trim seam allowance in layers.

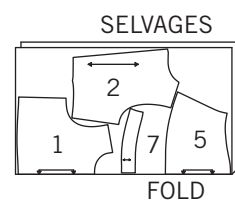
19. Layer enclosed seams
20. Trim corners
21. Clip inner curves
22. Notch outer curves

23. **UNDERSTITCH** —Press facing away from garment; press seam toward facing. Facing side up, understitch close to seam through facing and seam allowances.

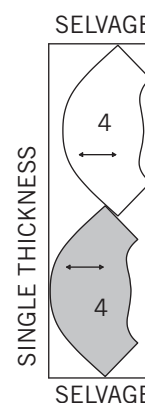
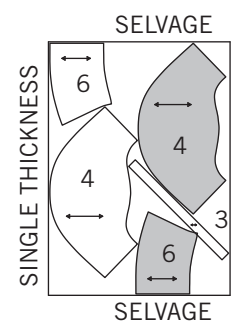
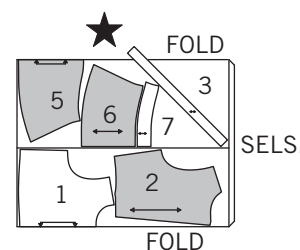
Cutting Layouts

A
USE PIECES 1 2 3 4 5 6 7

1A 44" 45" (115CM)
WITH NAP



1B 58" 60" (150CM)
WITH NAP



INTERFACING

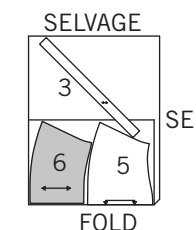
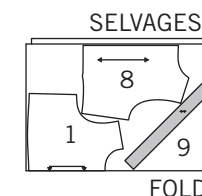
USE PIECE 7

1C 20" TO 25" (51CM TO 64CM)
FUSIBLE

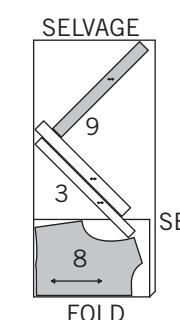
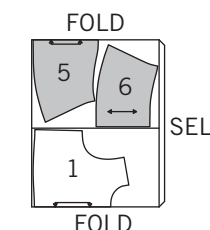


B
USE PIECES 1 3 5 6 8 9

2A 44" 45" (115CM)
WITH NAP



2B 58" 60" (150CM)
WITH NAP



Español

A
USE LAS PIEZAS 1 2 3 4 5 6 7

1A 44" 45" (115CM)
CON PELUSA

1B 58" 60" (150CM)
CON PELUSA

ENTRETELA

USE LA PIEZA 7

1C 20" A 25" (51CM A 64CM) ADHESIVA

B
USE LAS PIEZAS 1 3 5 6 8 9

2A 44" 45" (115CM)
CON PELUSA

2B 58" 60" (150CM)
CON PELUSA

SELVAGE (S)= ORILLAS
SEL.(S)= ORILLAS
FOLD= DOBLEZ
SINGLE THICKNESS= ESPESOR SIMPLE

SIMPLY THE BEST SEWING TECHNIQUES FOR SILKY TYPES

- Two key practices when sewing with silky types are to **TEST FIRST** and **TAKE YOUR TIME**.
- Equipment: Number 9 or 11 sharp needles are a must; the wrong size can ruin your fabric. Concerning hand sewing needles, sharps are the most popular but fine and darners work just as well. Silk thread is not necessary. Fine, smooth long-staple polyester thread is best.
- Marking: The less marking the better on silks, because they have delicate surfaces. If your fabric doesn't ravel, cut off notches instead of cutting around them and snip 1/4" (6mm) into seam allowances. Dots and ends of fold lines, pleats, and tucks can also be marked with snips. You can also transfer pattern symbols with tailor tacks or chalk.

- **Stitching:** Test-stitch a sample seam to check for puckers and other possible imperfections. Use a fairly small stitch length-12-15 stitches per inch (2.5cm) or a setting of 2 on a metric stitch length dial. A small-hole throat plate will keep the fabric from being pulled into the hole while sewing. If you don't have one, you can adapt your zig-zag throat plate by placing strips of tape on either side of the hole to make it smaller. Hold onto thread ends when you begin stitching. Avoid back-stitching at beginning and ends of seams...jamming can easily occur. Knot thread ends instead. Hold fabric taut while sewing. To prevent snags and puckers, don't stitch over pins; remove them as you sew. Also, change the needle regularly.
- **Pressing:** These delicate fabrics can stain or yellow from improper pressing. Always **TEST** your iron on a scrap of fabric to decide whether to use steam or dry heat. Set your iron on the correct temperature for the fiber content of your fabric. When sewing with a blend, set your iron for the fiber with the lowest heat tolerance. Use a pressing cloth to avoid iron shine.

SIMPLY THE BEST SEAM FINISHES FOR SHEER FABRICS

Seams can be finished with one of the three methods mentioned below:

OVERLOCK/SERGE - Overlock over raw edges of seam, using an overlock/serger machine.

OR

DOUBLE STITCHED SEAM- Stitch seam again 1/8" (3mm) from first stitching. Trim close to stitching. Press seam to one side.

OR

FRENCH SEAM- To make French seam, stitch first seam on **OUTSIDE**, a scant 1/4" (6mm) from seam line; trim close to stitching. Turn to **INSIDE** and stitch through seam allowance, encasing first seam.

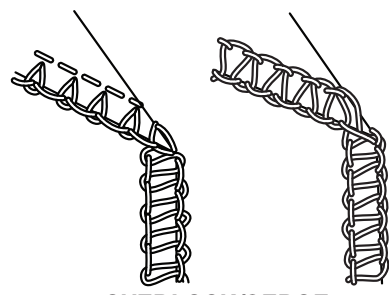
PATTERN PIECES WILL BE IDENTIFIED BY NUMBERS THE FIRST TIME THEY ARE USED.

STITCH SEAMS WITH RIGHT SIDES TOGETHER UNLESS OTHERWISE STATED.

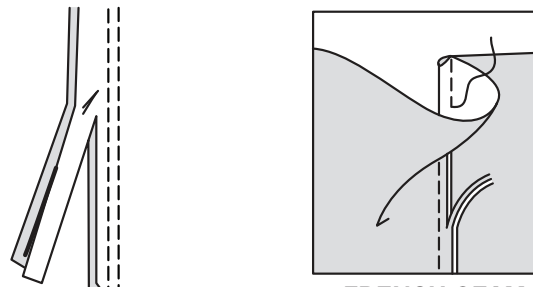
TOP A

1. **STAY-STITCH** 1/4" (6mm) from upper edge of bodice front (1). **GATHER** lower edge between notches.

2. **STAY-STITCH** 1/4" (6mm) from upper edge bodice back (2) sections. To make darts, with **RIGHT** sides together, bring broken lines together, matching small dots. Stitch along broken line from wide end to point. Press dart toward center. Press up hem on back edges. To form narrow hem, tuck under raw edge to meet crease; press. Stitch hem in place. Stitch back to front at shoulder seams.

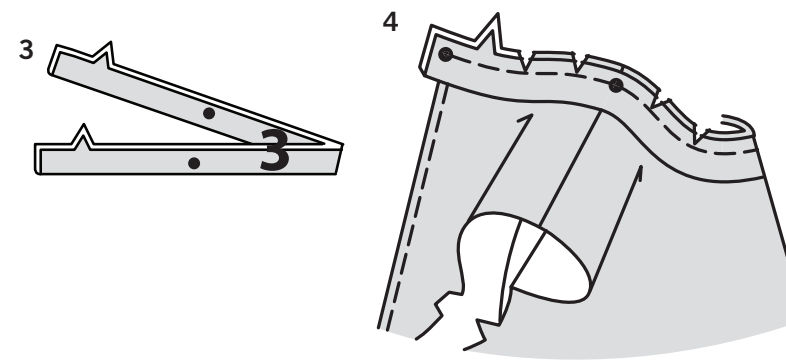
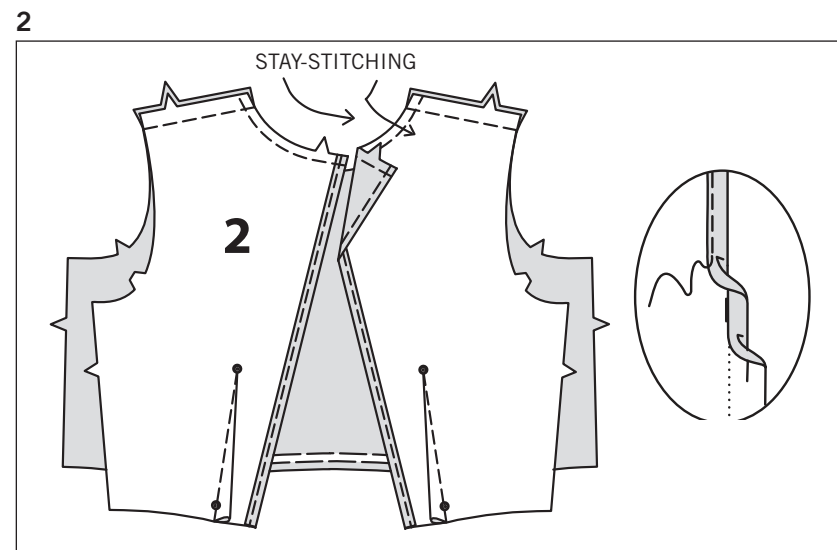


OVERLOCK/SERGE

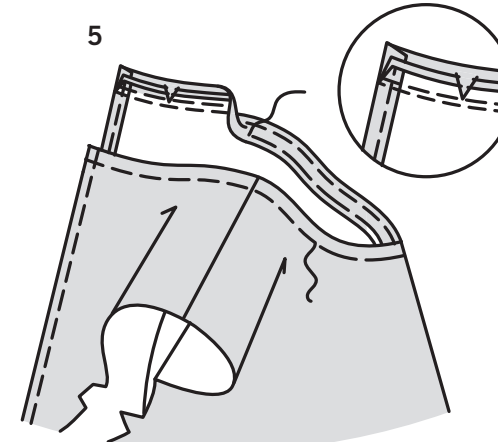


DOUBLE STITCHED SEAM

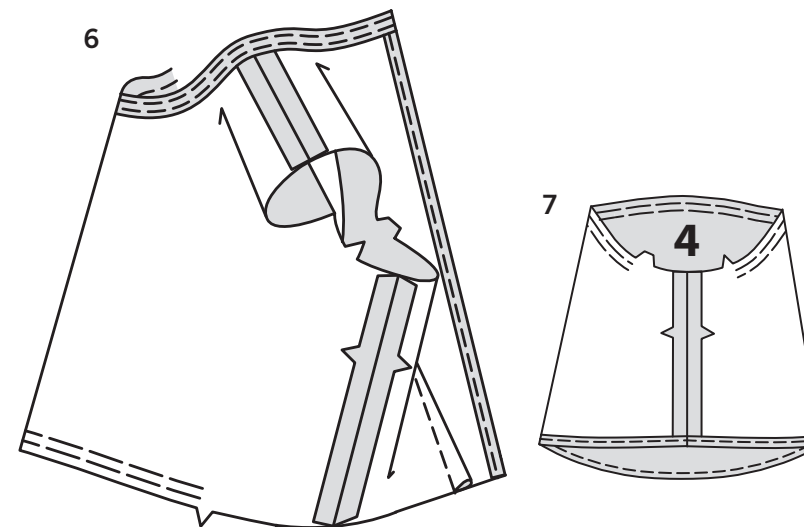
FRENCH SEAM



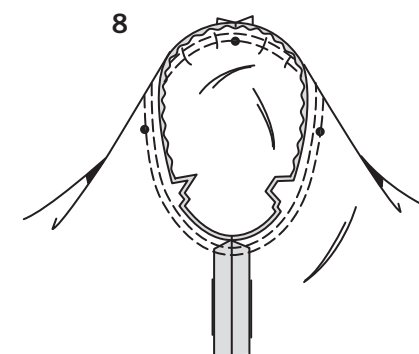
3. Fold neck facing (3) in half, lengthwise, with **WRONG** sides together, matching small dots; press.
4. On **OUTSIDE**, pin facing to neck edge of bodice, placing small dots at shoulder seams, matching centers and remaining small dots. Stitch in a 3/8" (1cm) seam. **LAYER** seam.



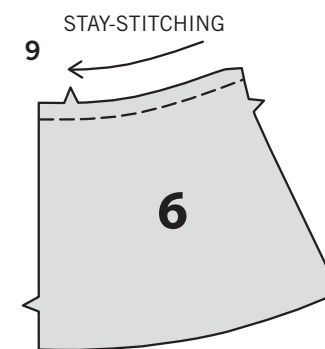
5. **UNDERSTITCH** facing. Press facing out, pressing seam toward facing. Turn in ends of facing. Turn facing to **INSIDE**; press. Baste close to inner edge of facing. On **OUTSIDE**, top-stitch as basted.



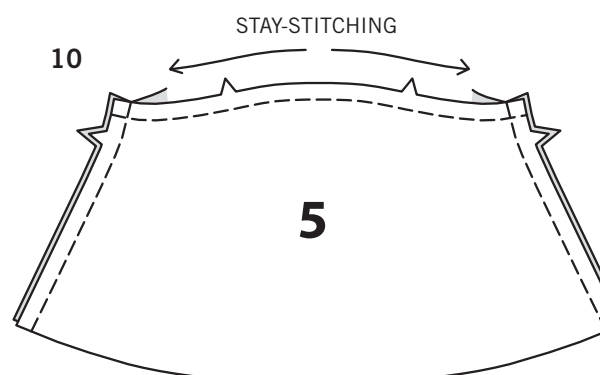
6. Stitch side seams of bodice.
7. **EASE** top of sleeve (4) between notches. Stitch underarm seam. Narrow hem lower edge same as for back edges.



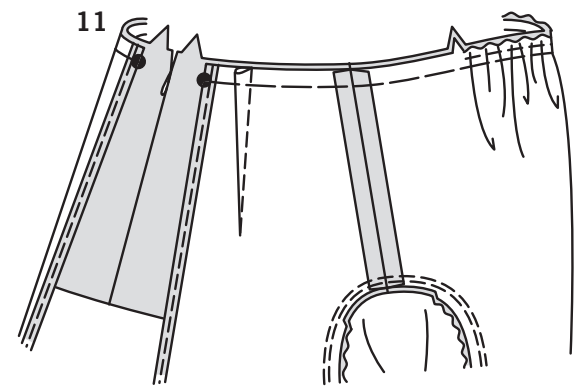
8. Turn sleeve **RIGHT** side out. Hold bodice **WRONG** side out with armhole toward you. With **RIGHT** sides together, pin sleeve to armhole edge with center small dot at shoulder seam, matching underarm seams, notches and remaining small dots. Pull up ease stitches to fit. To distribute fullness evenly, slide fabric along bobbin threads. Baste. Stitch. Stitch again 1/8" (3mm) from first stitching. Trim seam below notches close to stitching. Press only the seam allowance.



9. **STAY-STITCH** upper edge of back (6) sections. **Insert invisible zipper at back edges, following manufacturer's instructions.**



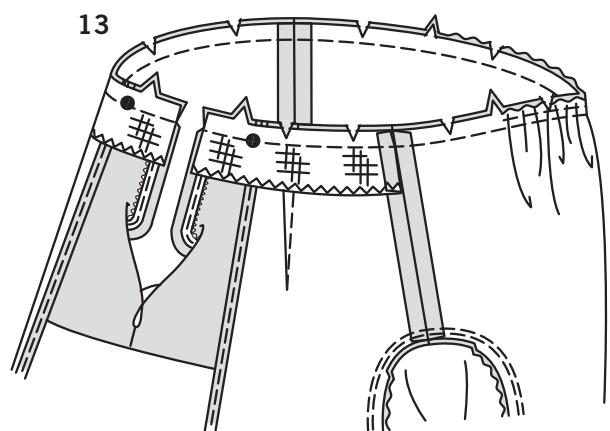
10. **STAY-STITCH** upper edge of front (5). Stitch front to back at side seams.



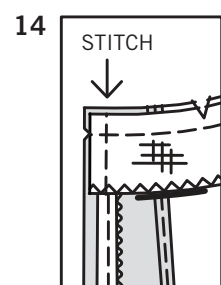
11. Pin lower half of top to bodice, matching centers, side seams, large dots, and notches. Pull up gathering stitches to fit; baste.



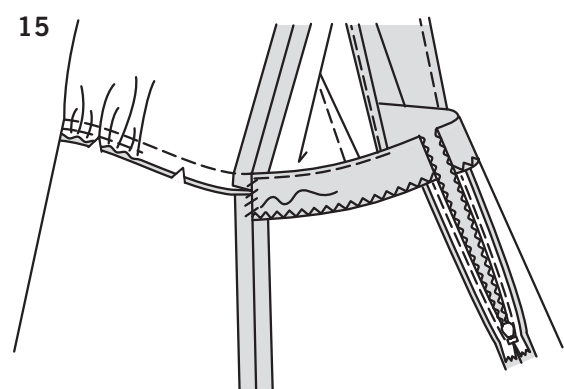
12. Apply **INTERFACING** to lower back facing (7).
To finish lower unnotched edge, zig-zag over the edge OR overlock/serge over the edge. If you prefer, for thicker fabrics, you can alternately stitch 1/4" (6mm) from edge, turn under along stitching and stitch.
Press under 5/8" (6mm) on notched end, clipping curve if necessary.



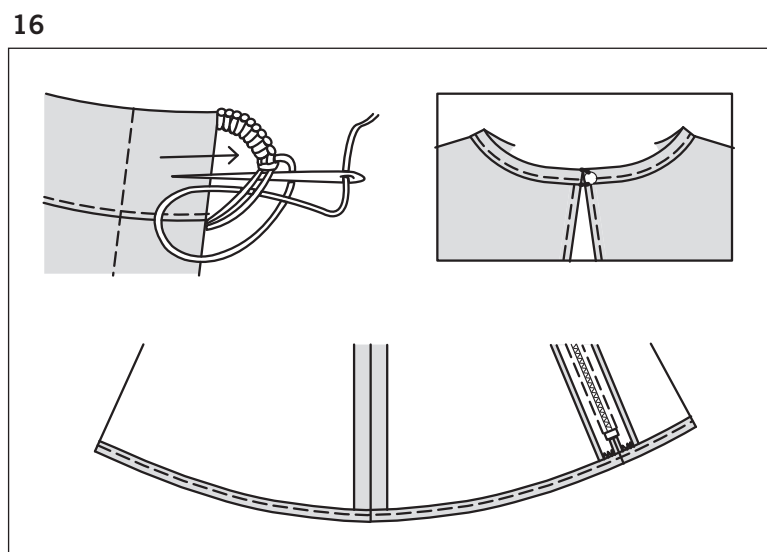
13. Open out center back opening edges of top rolling the zipper teeth away from the opening edge. With **RIGHT** sides together and raw edges even, pin facing to back waist seam allowance, matching side seams and large dots. Stitch entire waist seam. Trim facing seam allowance; clip curves.



14. Pin back opening edges together. Using an adjustable zipper foot, stitch 1/2" (1.3cm) from back edges, keeping zipper teeth free. Trim corners. Do not trim center back edges.

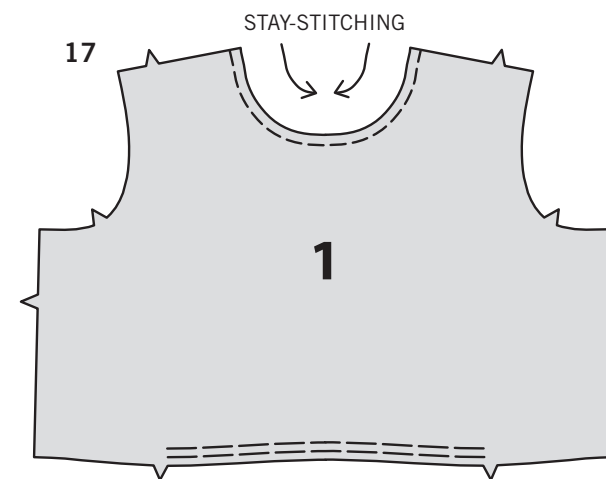


15. **UNDERSTITCH** facing as far as possible.
Turn facing and back edges to **INSIDE**, rolling zipper teeth back in places, pressing waist seam and facing down, as shown. Slip-stitched pressed edge of facing over side seam.

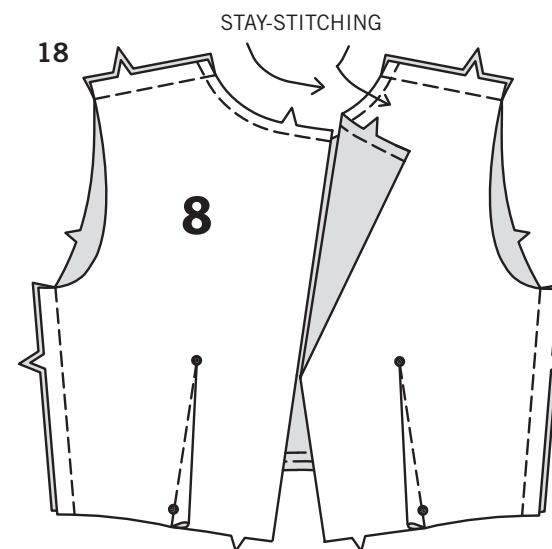


16. Make thread loop at **LEFT** back neck long enough to fit button. Sew button to **RIGHT** back under loop.
Narrow hem lower edge same as for back edges and sleeve.

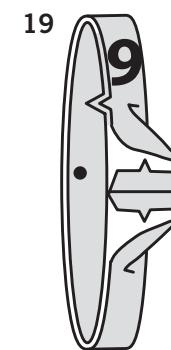
TOP B



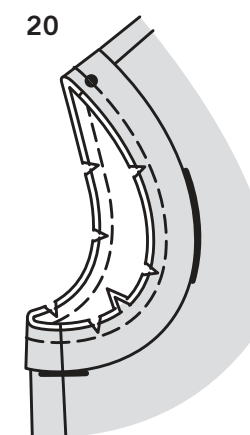
17. **STAY-STITCH** 1/4" (6mm) from upper edge of bodice front (1). **GATHER** lower edge between notches.



18. **STAY-STITCH** 1/4" (6mm) from upper edge bodice back (8).
To make darts, with **RIGHT** sides together, bring broken lines together, matching small dots. Stitch along broken line from wide end to point. Press dart toward center. Stitch back to front at shoulder and side seams.



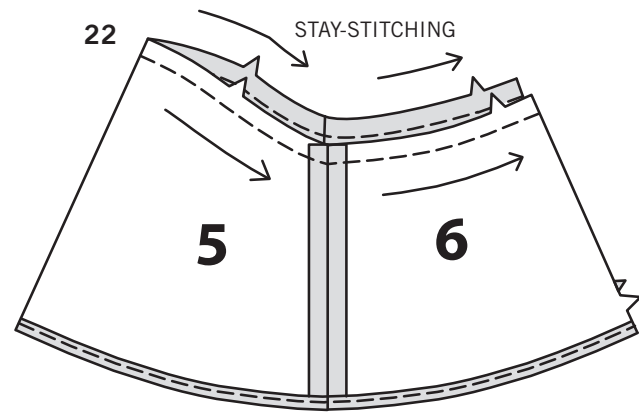
19. With **RIGHT** sides together, stitch ends of armhole facing (9).
Fold facing in half lengthwise, with **WRONG** sides together, matching small dots; press.



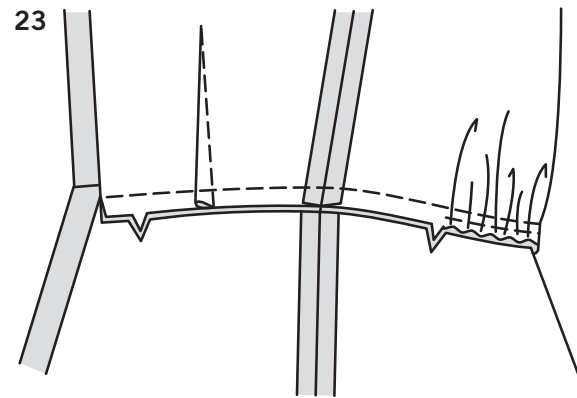
20. On **OUTSIDE**, pin facing to armhole edge, placing small dot at shoulder seam and matching remaining seams. Stitch. Trim seam; clip curves.



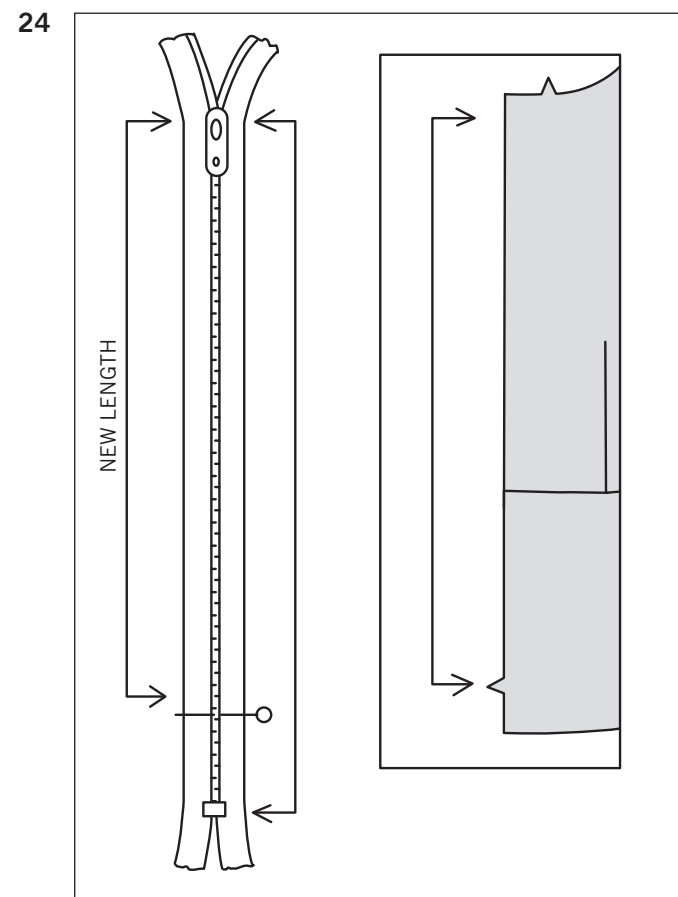
21. **UNDERSTITCH** armhole facing.
Turn facing to **INSIDE**; press.
Baste close to inner edge of facing. On **OUTSIDE**, top-stitch as basted.



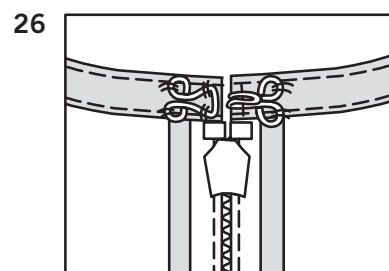
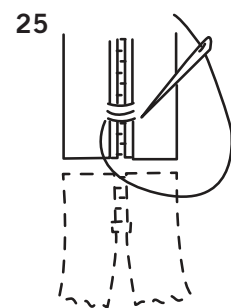
- 22. STAY-STITCH** upper edge of front (5) and back (6) sections. Stitch front to back at side seams. Press up hem on lower edge. To form narrow hem, tuck under raw edge to meet crease; press. Stitch hem in place.



- 23.** Pin lower half of top to bodice, matching centers, side seams, and notches. Pull up gathering stitches to fit; baste. Stitch seam. Press seam down.



- 24.** It may be necessary to adjust the length of your zipper. Measure the opening of top from notch to seam line at upper edge, less 1/2" (1.3cm). Close the zipper and measure from the tab down along the teeth to the length needed. Mark new length.



- 25.** With matching buttonhole twist or heavy-duty thread, make several overcast stitches across zipper teeth at marking. Trim away lower end of zipper tape to within 5/8" (1.5cm) of overcast stitches.

Insert invisible zipper at back edges, following manufacturer's instructions but placing top stop 1/2" (1.3cm) below seamline.

Stitch neck facing same as for Top A- see steps 3 through 5.

- 26.** Sew hook and eye at upper edge.

LAS PIEZAS DEL PATRÓN SON INDICADAS POR NÚMEROS CUANDO SON USADAS POR PRIMERA VEZ.

DERECHO CON DERECHO, COSER JUNTAS LAS COSTURAS A MENOS QUE SE LE INDIQUE LO CONTRARIO.

BLUSA A

- HAGA PUNTADA DE SOSTEN** a 1/4" (6mm), desde el borde superior del frente del corpiño (1). **FRUNZA** el borde inferior entre las muescas.
- HAGA PUNTADA DE SOSTEN** a 1/4" (6mm), desde el borde superior de las secciones de la espalda del corpiño (2). Para hacer las pinzas, **DERECHO CON DERECHO**, lleve juntas las líneas entrecortadas, casando los puntos pequeños. Cosa a lo largo de la línea entrecortada, desde el extremo ancho hasta la punta. Planche la pinza hacia el centro. Planche el dobladillo hacia arriba sobre los bordes traseros. Para formar el dobladillo angosto, doble hacia adentro el borde no terminado hasta el doblez; planche. Cosa el dobladillo en su lugar. Cosa la parte trasera al frente, en las costuras de los hombros.
- REVES CON REVES**, doble la vista del escote (3) por la mitad y a lo largo, casando los puntos pequeños; planche.
- En el **EXTERIOR**, sujete con alfileres la vista al borde del escote del corpiño, colocando los puntos pequeños en las costuras de los hombros, casando los centros y los puntos pequeños restantes. Cosa en una costura de 3/8" (1cm). Recorte la costura a **DIFERENTES NIVELES**.
- HAGA PUNTADA OCULTA** a la vista. Planche la vista hacia afuera y la costura hacia la vista. Voltee en los extremos de la vista. Voltee la vista al **INTERIOR**; planche. Hilvane cerca del borde interior de la vista. En el **EXTERIOR**, haga puntada de adorno como hilvanado.
- Cosa las costuras laterales del corpiño.
- FRUNZA** la parte superior de la manga (4) entre las muescas. Cosa la costura de debajo de los brazos. Dobladille angosto el borde inferior, de la misma manera que los bordes traseros.
- Voltee la manga al lado **DERECHO**. Sostenga el vestido al **REVES** con la sisa hacia usted. **DERECHO CON DERECHO**, sujete con alfileres la manga al borde de la sisa, con el punto pequeño central en la costura de los hombros, casando las costuras de debajo de los brazos, las muescas y los puntos pequeños restantes. Hale de las costuras fruncidas para ajustarlas. Para distribuir uniformemente la amplitud, deslice la tela a lo largo de los hilos de la bobina. Hilvane. Cosa. Cosa de nuevo a 1/8" (3mm) de la puntada previa. Recorte la costura por debajo de las muescas, cerca de la puntada. Planche únicamente el margen de la costura.
- HAGA PUNTADA DE SOSTEN** al borde superior de las secciones de la espalda (6).

Inserte la cremallera invisible en los bordes traseros, siguiendo las instrucciones del fabricante.

- HAGA PUNTADA DE SOSTEN** al borde superior frontal (5). Cosa el frente a la espalda en las costuras laterales.
- Sujete con alfileres la mitad inferior de la blusa al corpiño, casando los centros, las costuras laterales, los puntos grandes y las muescas. Hale de las costuras fruncidas para ajustar; hilvane.
- Aplique **ENTRETELA** a la vista trasera inferior (7). Para terminar el borde inferior sin muescas, haga puntada de zig-zag sobre el borde o puntada overlock/sobrehilada sobre el borde. Si lo prefiere, para telas más gruesas, puede coser alternativamente a 1/4" (6mm) del borde, voltee un doblez a lo largo de la puntada y cosa. Planche un doblez de 5/8" (6mm) sobre el extremo con muescas, cortando a lo largo de la curva, si lo considera necesario.
- Abra los bordes abiertos traseros centrales de la blusa, cerrando la cremallera aparte del borde de la abertura. **DERECHO CON DERECHO** y emparejando los bordes no terminados, sujete con alfileres la vista al margen de la costura trasero de la cintura, casando las costuras laterales y los puntos grandes. Cosa la totalidad de la costura de la cintura. Recorte el margen de la costura de la vista; haga cortes a lo largo de las curvas.

- Sujete con alfileres conjuntamente los bordes abiertos traseros. Usando un pie ajustable para cremallera, cosa a 1/2" (1.3cm) de los bordes traseros, manteniendo libres los dientes de la cremallera. Recorte las esquinas. No recorte los bordes traseros centrales.

- HAGA PUNTADA OCULTA** a la vista, hasta donde sea posible. Voltee los bordes de la vista y de la parte trasera al **INTERIOR**, cerrando la cremallera en su lugar, planchando la costura de la cintura y la vista hacia abajo, como se muestra. Haga puntada falsa al borde doblado de la vista, sobre la costura lateral.
- Haga una presilla de hilo en el escote trasero **IZQUIERDO**, lo suficientemente grande para introducir el botón. Cosa el botón en la parte trasera **DERECHA** debajo de la presilla. Dobladille angosto el borde inferior, de la misma manera que para los bordes traseros y la manga.

BLUSA B

- HAGA PUNTADA DE SOSTEN** a 1/4" (6mm), del borde inferior del frente del corpiño (1). **FRUNZA** el borde inferior entre las muescas.
- HAGA PUNTADA DE SOSTEN** a 1/4" (6mm), desde el borde superior de la parte trasera del corpiño (8). Para hacer las pinzas, **DERECHO CON DERECHO**, lleve juntas las líneas entrecortadas, casando los puntos pequeños. Cosa a lo largo de la línea entrecortada, desde el extremo ancho hasta la punta. Planche la pinza hacia el centro. Cosa la parte trasera al frente en las costuras de los hombros y las laterales.
- DERECHO CON DERECHO**, cosa los extremos de la vista de la sisa (9). **REVES CON REVES**, doble la vista por la mitad y a lo largo, casando los puntos pequeños; planche.
- En el **EXTERIOR**, sujete con alfileres la vista al borde de la sisa, colocando el punto pequeño en la costura de los hombros, y casando las costuras restantes. Cosa. Recorte la costura; haga cortes a lo largo de las curvas.
- HAGA PUNTADA OCULTA** a la vista de la sisa. Voltee la vista al **INTERIOR**; planche. Hilvane cerca del borde interior de la vista. En el **EXTERIOR**, haga puntada de adorno como hilvanado.
- HAGA PUNTADA DE SOSTEN** al borde superior, de las secciones frontal (5) y trasera (6). Cosa el frente a la espalda en las costuras laterales. Planche el dobladillo hacia arriba sobre el borde inferior. Para formar el dobladillo angosto, doble hacia adentro el borde no terminado hasta el pliegue; planche. Cosa el dobladillo en su lugar.
- Sujete con alfileres la mitad inferior de la blusa al corpiño, casando los centros, las costuras laterales y las muescas. Hale de las costuras fruncidas para ajustar; hilvane. Cosa la costura. Planche la costura hacia abajo.
- Puede ser necesario ajustar el largo de la cremallera. Mida la abertura de la blusa, desde la muesca hasta la línea de la costura en el borde superior, menos 1/2" (1.3cm). Cierre la cremallera y mida desde el tope superior de la lengüeta hacia abajo, a lo largo de los dientes de la cremallera, para determinar el largo requerido para la cremallera. Marque la nueva longitud.
- Con un ojal de hilo retorcido o un hilo debidamente resistente, haga algunas costuras cubiertas a través de los dientes de la cremallera en la marca. Recorte aparte el extremo inferior de la cinta de la cremallera, hasta dentro de 5/8" (1.5cm) de las costuras cubiertas.

Inserte la cremallera invisible a los bordes traseros, siguiendo las instrucciones del fabricante, pero colocando la parte superior de la lengüeta a 1/2" (1.3cm), por debajo de la línea de la costura.

Cosa la vista del escote, de la misma manera que para la Blusa A- consulte los pasos 3 al 5.

- Cosa un broche de presión en el borde superior.