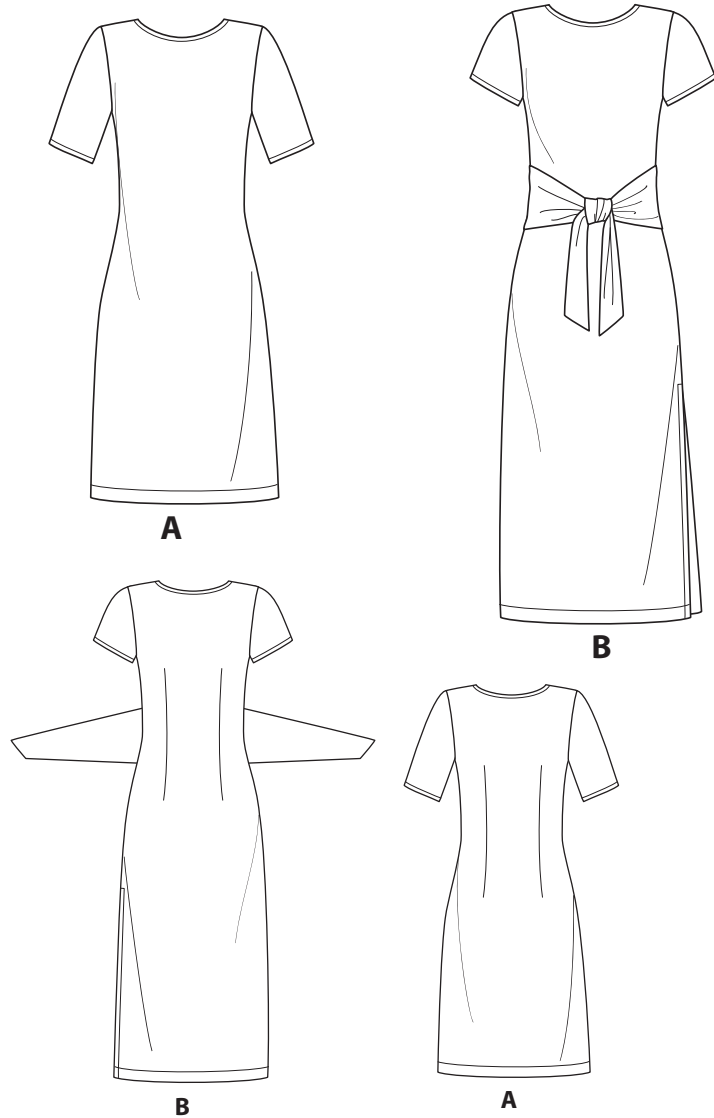


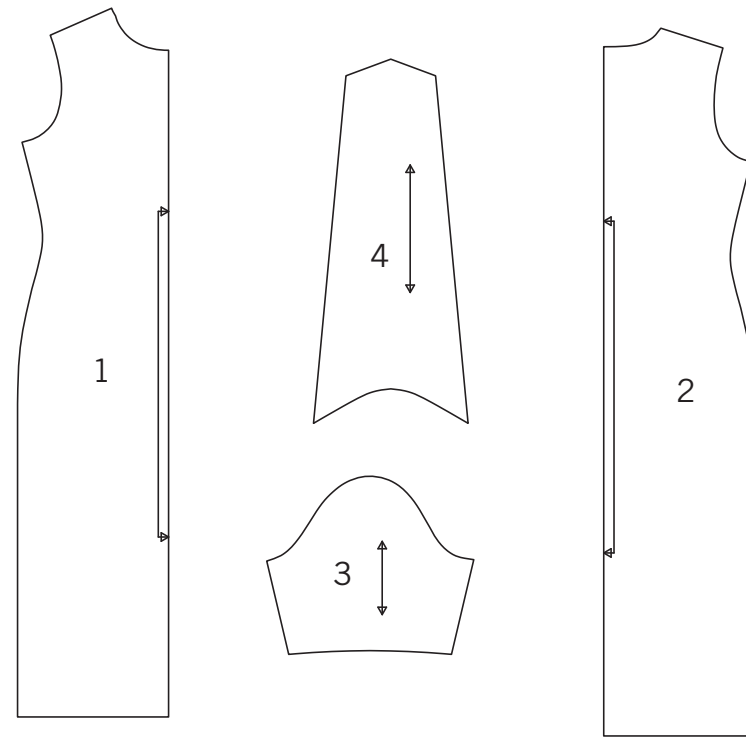
NEW LOOK® N6650

www.simplicity.com info@simplicity.com 1-888-588-2700

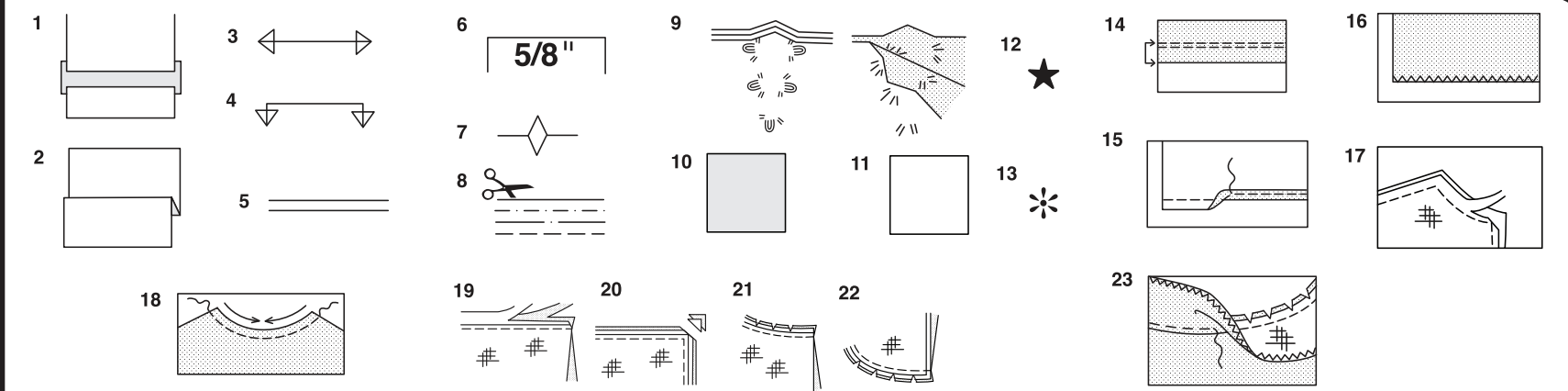
Thank you for purchasing this New Look pattern. We made every effort to provide you with a high quality product. Gracias por haber comprado este patrón de New Look. Hemos hecho todos los esfuerzos para ofrecerle un producto de alta calidad.



4 PIECES GIVEN



- 1-FRONT -A,B
- 2-BACK -A,B
- 3-SLEEVE -A,B
- 4-TIE END -B



How To Use Your Multi Size Pattern

First Prepare Your Pattern

Select the pattern pieces according to the view you are making.

This pattern is made to body measurements with ease allowed for comfort and style. If your body measurements differ from those on the pattern envelope adjust the pieces before placing them on the fabric.

Check your back neck to waist and dress length, if necessary, alter the pattern. Lengthening and shortening lines are indicated.

1. **TO LENGTHEN** : Cut pattern between printed lines and place paper underneath. Spread pattern the required amount and pin to paper.
2. **TO SHORTEN** : Fold at the printed lines to form a pleat half the amount to be shortened, ie 1/2" (1.3cm) deep to shorten 1" (2.5cm).

Study Your Pattern Markings

3. **STRAIGHT GRAIN** : Place an even distance from selvage or a straight thread.
4. **FOLD** : Place on fold of fabric.
5. **LENGTHENING AND SHORTENING LINES.**
6. **SEAM ALLOWANCE** : 5/8" (1.5cm) unless otherwise stated.
7. **NOTCHES** : Match notches.
8. **CUTTING LINES** : Multi patterns have different cutting lines for different sizes.
9. **TAILOR-TACKS** : With double thread make two loose stitches forming loop through fabric layers and pattern leaving long ends. Cut loop to remove pattern. Snip thread between fabric layers. Leave tufts.

Cutting Layouts

Cutting Directions

FOR FOLDED AND DOUBLE LAYER FABRIC - Place fabric with right side inside and pin pattern on wrong side of fabric.

FOR SINGLE LAYER - Pin pattern on right side of fabric. NOTE: Pattern pieces may interlock more closely for smaller sizes. Cut notches out from cutting line.

BEFORE removing pattern from fabric, transfer all pattern markings using tailor tacks or dressmaking tracing paper.

10. **KEY:** pattern printed side down
11. **KEY:** pattern printed side up
12. **KEY:** Cut out all pieces except pieces that extend beyond folded fabric, then open out fabric and on RIGHT side of fabric, cut in positions as shown.

13. **KEY:** For with and without nap layouts ensure fabric is placed with nap or design running in same direction.

Before pinning to fabric, press tissue pattern with a warm dry iron to remove creases.

Sewing Directions

Fabric Key	Right Side	Wrong Side	Interfacing	Lining
	→	←	#	#

Sew garment following **Sewing Directions.**

PIN or machine-baste seams matching notches.

STITCH 5/8" (1.5cm) seams unless otherwise stated.

PRESS seams open unless otherwise indicated, clipping when necessary so seams will lie flat.

14. **EASE-STITCH** or **GATHER** - Loosen needle tension slightly. With RIGHT side up, stitch 5/8" (1.5cm) from cut edge using a long stitch. Stitch again 1/4" (6mm) away in the seam allowance.

EDGE FINISH - Neaten raw edges of seams, hems and facings using one of the following methods.

15. Stitch 1/4" (6mm) from edge, turn under along stitching and stitch.
16. Zig-zag or overlock raw edges.

17. **INTERFACING** — Pin interfacing to WRONG side of fabric. Cut across corners that will be enclosed with seams. Machine-baste 1/2" (1.3cm) from cut edge. (Shown only on first illustration). Trim interfacing close to machine-basting. For FUSIBLE interfacing, follow manufacturer's directions.

18. **STAY-STITCH** —Stitch 1/2" (1.3cm) from cut edge, in direction of arrows: (Shown only in the first illustration).

LAYERING — Trim seam allowance in layers.

19. Layer enclosed seams
20. Trim corners
21. Clip inner curves
22. Notch outer curves

23. **UNDERSTITCH** —Press facing away from garment; press seam toward facing. Facing side up, understitch close to seam through facing and seam allowances.

Cutting Layouts

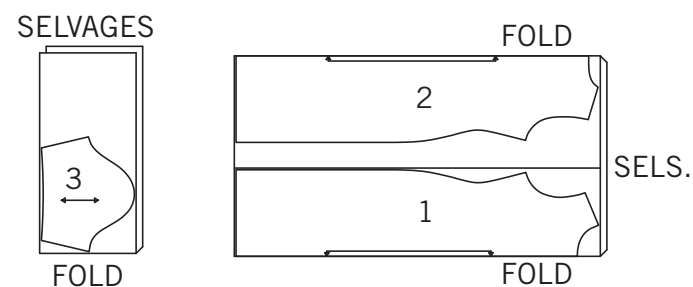
ALL VIEWS ARE SIZED FOR STRETCH KNITS ONLY

A

USE PIECES 1 2 3

1 58" 60" (150CM)

WITH NAP

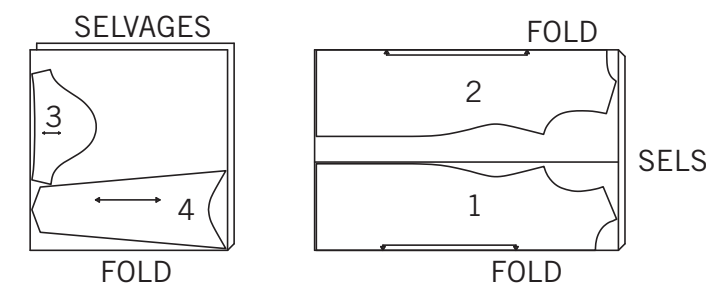


B

USE PIECES 1 2 3 4

2 58" 60" (150CM)

WITH NAP



Español

PARA MALLAS ESTIRABLES SOLAMENTE

A

USE LAS PIEZAS 1 2 3

1 58" 60" (150CM)

CON PELUSA

B

USE LAS PIEZAS 1 2 3 4

2 58" 60" (150CM)

CON PELUSA

SELVAGES= ORILLAS

SELS.)= ORILLAS

FOLD= DOBLEZ

SIMPLY THE BEST SEWING TECHNIQUES... FOR KNITS

- Use a ball point or stretch needle.
- Decrease pressure on presser foot for heavy sweater knits; increase pressure for lingerie knits.
- Stretch knits need seams that are supple enough to “give” with the fabric. You can sew them with straight stitches (stretching the fabric slightly as you sew), narrow zig-zag stitches or one of the stretch stitches built into many conventional machines, or on your serger.
- Some knits require very little or no pressing while sewing. Use the appropriate temperature setting. Press lightly or use steam.

- To prevent shoulder seams from stretching, pin center of hem tape, clear elastic or twill tape along seam line on front shoulder edges, then stitch the shoulder seams.

- Hems can be stitched in place 1/4” (6mm) from raw edge.
- Raw edges of hem and facings are left raw, unless using a serger.

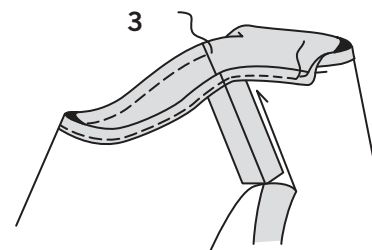
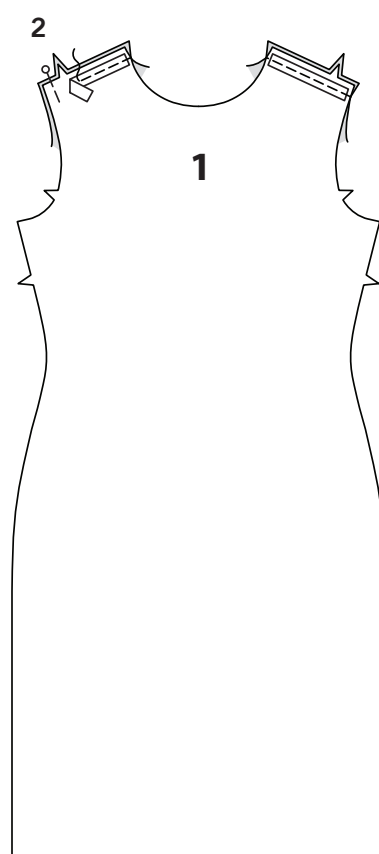
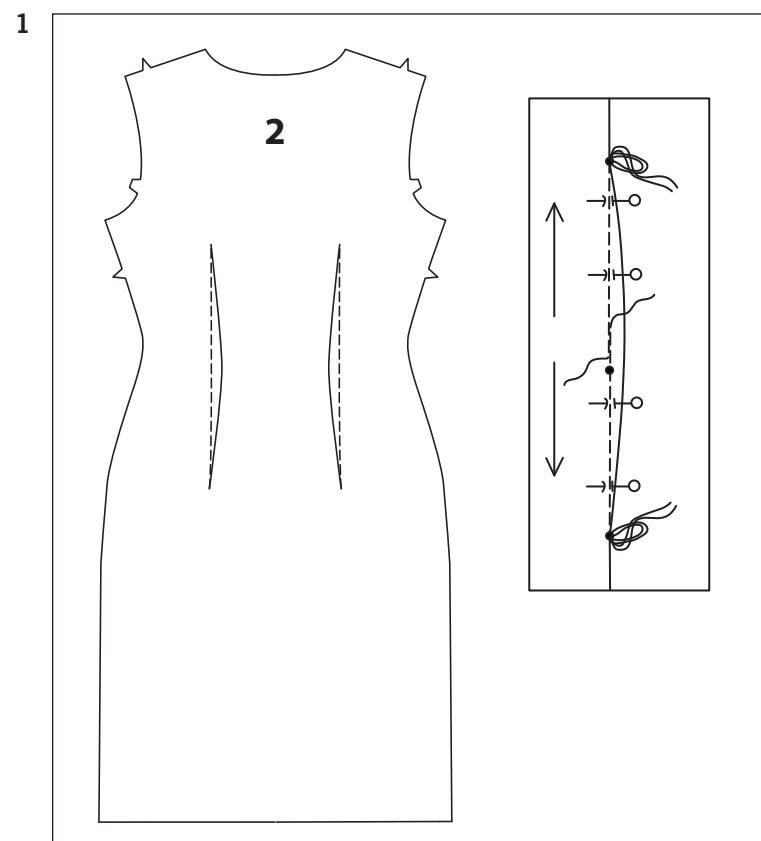
PATTERN PIECES WILL BE IDENTIFIED BY NUMBERS THE FIRST TIME THEY ARE USED.

STITCH SEAMS WITH RIGHT SIDES TOGETHER UNLESS OTHERWISE STATED.

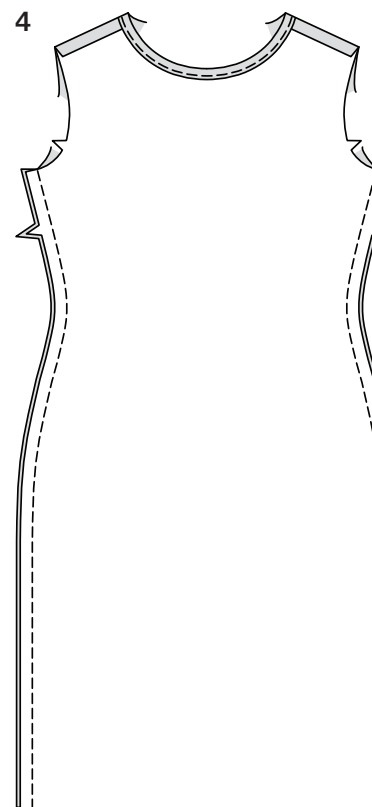
DRESS A, B

1. To make darts in back (2), with RIGHT sides together, fold the fabric through the center of the dart, bringing broken lines and small dots together. Stitch the dart from the middle to one point. Then, overlapping several stitches, work from the middle to the other point. If necessary, carefully clip the dart at its widest point so that it will lie flat. Press the dart flat along the stitching to “blend” the stitches, then press dart toward center.

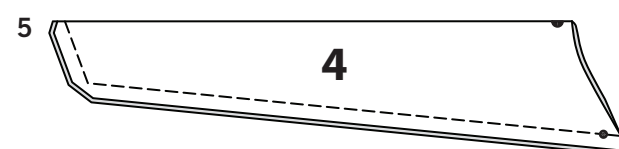
2. Pin front (1) to back at shoulder seams. If you prefer, to prevent shoulder seam from stretching, pin center of elastic along seam line on front shoulder edges. Stitch shoulder seam.



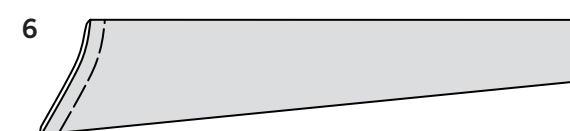
3. Press under 5/8” (1.5cm) hem allowance on neck edge. To form narrow hem, tuck under raw edge to meet crease. Press. Stitch hem in place.



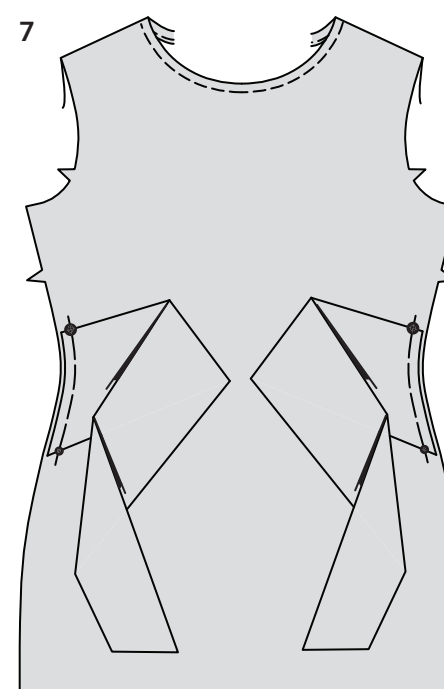
4. **SIDE SEAMS A-** Stitch side seams.



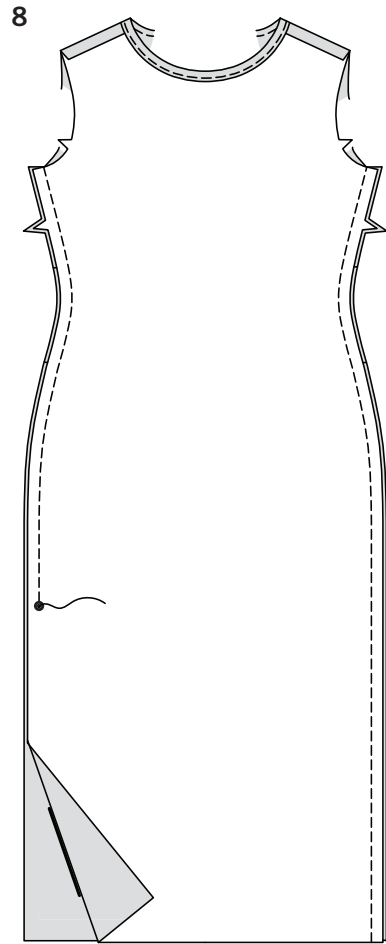
5. **TIE END B AND SIDE SEAMS B-** Fold tie end (4) sections in half along fold line. Stitch, leaving end with small and large dots open. Trim corner.



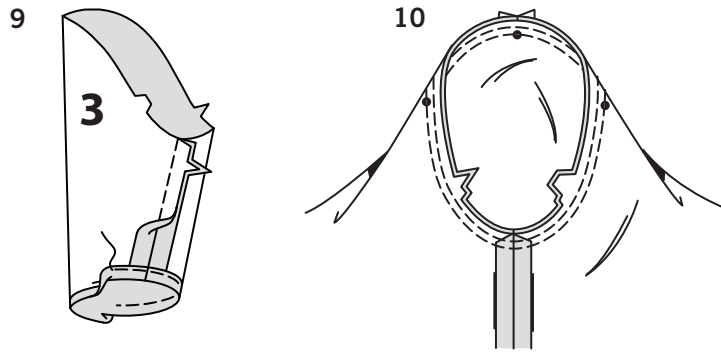
6. Turn tie end; press. Baste raw edges together.



7. On OUTSIDE, baste tie ends to front, matching small and large dots.

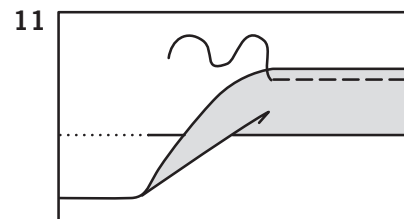


- 8.** Stitch side seams, stitching LEFT side seam above large dot, back-stitching at large dot to reinforce seam.

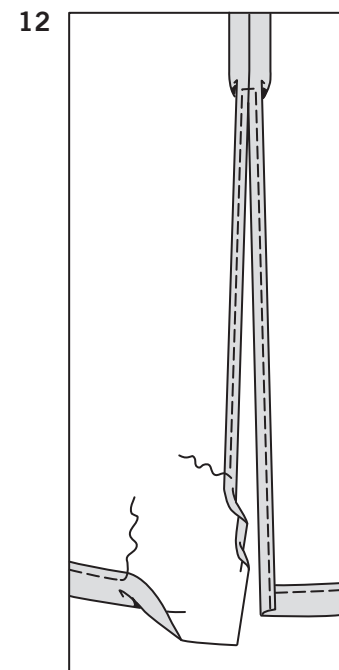


- 9. FOR DRESS A, B-** Stitch underarm seam of sleeve (3) sections. Press up hem. To form narrow hem, tuck under raw edge to meet crease; press. Stitch hem in place.

- 10.** Turn sleeve RIGHT side out. Hold dress WRONG side out with armhole toward you. With RIGHT sides together, pin sleeve to armhole edge with center small dot at shoulder seam, matching underarm seams, notches and remaining small dots. Stitch. Stitch again 1/8" (3mm) from first stitching. Trim seam below notches close to stitching. Press only the seam allowance, shrinking out fullness.



- 11. HEM A-** Mark length. Press up hem along marking. Mark depth of hem; trim evenly. Stitch 1/4" (6mm) from raw edge.



- 12. HEM AND SIDE SLITS B-** Mark length. Press up hem along marking. Mark depth of hem; trim evenly. Stitch 1/4" (6mm) from raw edge. Press under 5/8" (1.5cm) on slit opening edges. Press under 1/4" (6mm) on raw edge; stitch, squaring stitching above opening.

SIMPLEMENTE LAS MEJORES TÉCNICAS PARA COSER..... MALLAS

- Use una aguja con punta redondeada o una aguja estirable.
- Disminuya la presión del preséntelas para las mallas espesas de sweater y aumentela para las mallas finas de lencería.
- Las mallas necesitan costuras flexibles para seguir la tela. Ud. puede coser las costura con puntadas rectas (estirando ligeramente la tela a medida que cosa), puntadas de zigzag o las puntadas estirables incorporadas en su máquina corriente o sobrehiladora.
- Ciertas mallas necesitan muy poco o nada de planchado durante la costura. Regule la plancha a la temperatura apropiada. Planché ligeramente o use vapor.
- Para prevenir que las costuras de los hombros se estiren, prenda con alfileres el centro de una cinta para dobladillo, un elástico o un galón asargado a lo largo de la línea de costura de los bordes de los hombros del frente, luego cosa las costuras de los hombros.
- El dobladillo puede ser cosido en su lugar a a 1/4" (6mm) del borde no terminado.
- Los bordes no terminados del dobladillo y las vistas se pueden dejarse sin terminar, a menos que use una máquina sobrehiladora.

VESTIDOS A, B

- 1.** Para hacer las pinzas en la espalda (2), DERECHO CON DERECHO, doble la tela por el centro de la pinza, llevando juntas las líneas entrecortadas y los puntos pequeños. Cosa la pinza desde la mitad hasta una punta. Luego, cruce algunas costuras, comience desde la mitad hasta la otra punta. Si lo considera necesario, corte la pinza en su punta más ancha, de manera que aparecerá plana. Planché plana la pinza a lo largo de la puntada para "ocultar" las costuras, luego planche la pinza hacia el centro.
- 2.** Sujete con alfileres el frente (1) a la espalda en las costuras de los hombros. Si lo prefiere, para prevenir el estiramiento de la costura de los hombros, sujete con alfileres el centro del elástico, a lo largo de la línea de la costura sobre los bordes frontales de los hombros. Cosa la costura de los hombros.
- 3.** Planché un dobléz de 5/8" (1.5cm), al margen del dobladillo sobre el borde del escote. Para formar el dobladillo angosto, doble hacia adentro el borde no terminado hasta el dobléz. Planché. Cosa el dobladillo en su lugar.

- 4. COSTURAS LATERALES A** – Cosa las costuras laterales.

- 5. LAZO B Y COSTURAS LATERALES B** – Doble las secciones del lazo (4) por la mitad, a lo largo de la línea del dobléz. Cosa, dejando un extremo con los puntos pequeños y grandes abiertos. Recorte la esquina.

- 6.** Voltee el lazo; planche. Hilvane conjuntamente los bordes no terminados.

- 7.** En el EXTERIOR, hilvane los extremos del lazo al frente, casando los puntos pequeños y grandes.

- 8.** Cosa las costuras laterales, cosiendo la costura lateral IZQUIERDA por encima del punto grande, retrocediendo la puntada y cosiendo en el punto grande, para reforzar la costura.

- 9. PARA LOS VESTIDOS A, B** – Cosa la costura de debajo de los brazos, de las secciones de la manga (3). Planché el dobladillo hacia arriba. Para formar el dobladillo angosto, doble hacia adentro el borde no terminado hasta el dobléz; planche. Cosa el dobladillo en su lugar.

- 10.** Voltee la manga al lado DERECHO. Sostenga el vestido al REVES con la sisa hacia usted. DERECHO CON DERECHO, sujete con alfileres la manga al borde de la sisa, con el punto pequeño central en la costura de los hombros, casando las costuras de debajo de los brazos, las muescas y los puntos pequeños restantes. Cosa. Cosa de nuevo a 1/8" (3mm) de la puntada previa. Recorte la costura por debajo de las muescas, cerca de la puntada. Planché únicamente el margen de la costura, disminuyendo de esta manera la amplitud.

- 11. DOBLADILLO A** – Marque el largo. Planché el dobladillo hacia arriba a lo largo de la marca. Marque el ancho del dobladillo; recórtelo uniformemente. Cosa a 1/4" (6mm) del borde no terminado.

- 12. DOBLADILLO Y ABERTURAS LATERALES B** – Marque el largo. Planché el dobladillo hacia arriba a lo largo de la marca. Marque el ancho del dobladillo; recórtelo uniformemente. Cosa a 1/4" (6mm) del borde no terminado. Planché un dobléz de 5/8" (1.5cm) sobre los bordes abiertos. Planché un dobléz de 1/4" (6mm) sobre el borde no terminado; cosa, girando la puntada por encima de la abertura.