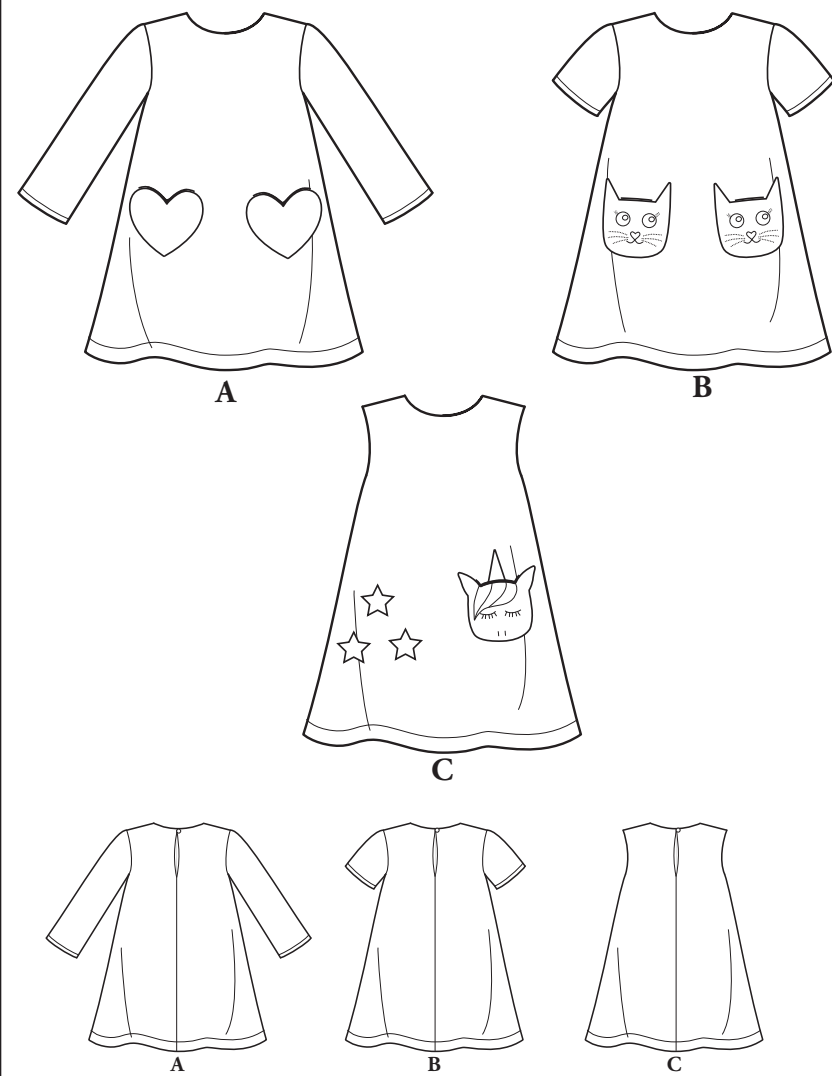
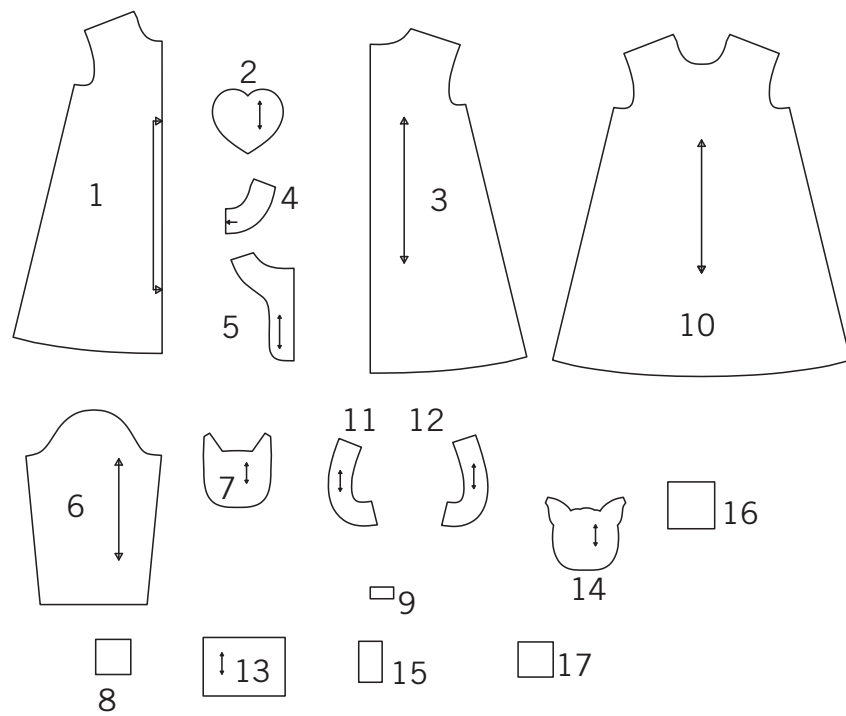


NEW LOOK® N6611

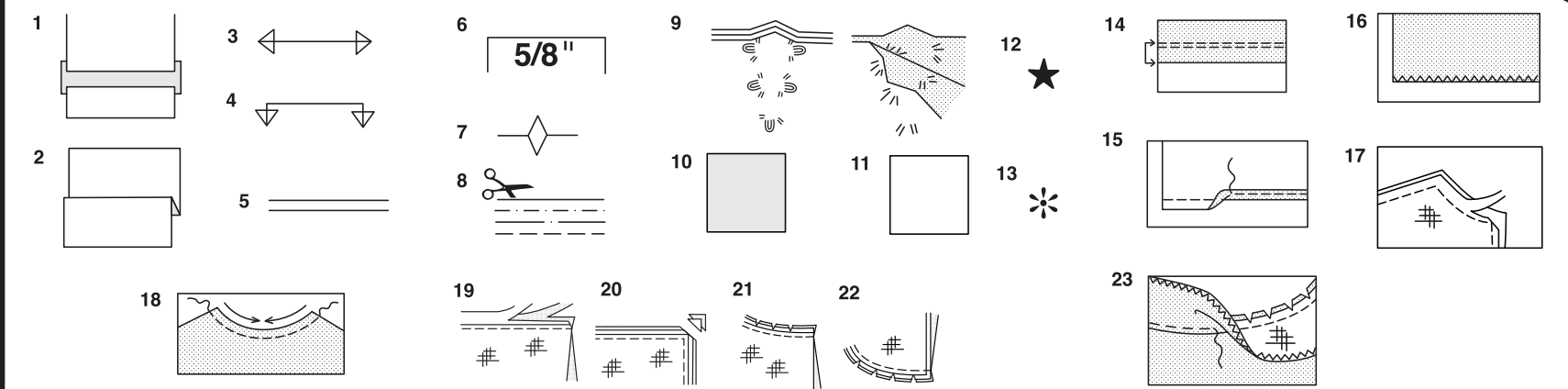
Thank you for purchasing this New Look pattern. We made every effort to provide you with a high quality product. Gracias por haber comprado este patrón de New Look. Hemos hecho todos los esfuerzos para ofrecerle un producto de alta calidad.



17 PIECES GIVEN



- 1-FRONT -A,B
- 2-POCKET -A
- 3-BACK -A,B,C
- 4-FRONT FACING -A,B,C
- 5-BACK FACING -A,B,C
- 6-SLEEVE -A,B
- 7-POCKET -B
- 8-EYE APPLIQUE -B
- 9-NOSE APPLIQUE -B
- 10-FRONT -C
- 11-FRONT ARMHOLE FACING -C
- 12-BACK ARMHOLE FACING -C
- 13-HORN AND STAR APPLIQUE -C
- 14-POCKET -C
- 15-LEFT MANE APPLIQUE -C
- 16-CENTER MANE APPLIQUE -C
- 17-RIGHT MANE APPLIQUE -C



How To Use Your Multi Size Pattern

First Prepare Your Pattern

Select the pattern pieces according to the view you are making.

This pattern is made to body measurements with ease allowed for comfort and style. If your body measurements differ from those on the pattern envelope adjust the pieces before placing them on the fabric.

Check your back neck to waist and dress length, if necessary, alter the pattern. Lengthening and shortening lines are indicated.

- TO LENGTHEN** : Cut pattern between printed lines and place paper underneath. Spread pattern the required amount and pin to paper.
- TO SHORTEN** : Fold at the printed lines to form a pleat half the amount to be shortened, ie 1/2" (1.3cm) deep to shorten 1" (2.5cm).

Study Your Pattern Markings

- STRAIGHT GRAIN** : Place an even distance from selvage or a straight thread.
- FOLD** : Place on fold of fabric.
- LENGTHENING AND SHORTENING LINES.**
- SEAM ALLOWANCE** : 5/8" (1.5cm) unless otherwise stated.
- NOTCHES** : Match notches.
- CUTTING LINES** : Multi patterns have different cutting lines for different sizes.
- TAILOR-TACKS** : With double thread make two loose stitches forming loop through fabric layers and pattern leaving long ends. Cut loop to remove pattern. Snip thread between fabric layers. Leave tufts.

Cutting Layouts

Cutting Directions

FOR FOLDED AND DOUBLE LAYER FABRIC - Place fabric with right side inside and pin pattern on wrong side of fabric.

FOR SINGLE LAYER - Pin pattern on right side of fabric. NOTE: Pattern pieces may interlock more closely for smaller sizes. Cut notches out from cutting line.

BEFORE removing pattern from fabric, transfer all pattern markings using tailor tacks or dressmaking tracing paper.

- KEY:** pattern printed side down
- KEY:** pattern printed side up
- KEY:** Cut out all pieces except pieces that extend beyond folded fabric, then open out fabric and on RIGHT side of fabric, cut in positions as shown.
- KEY:** For with and without nap layouts ensure fabric is placed with nap or design running in same direction.

Before pinning to fabric, press tissue pattern with a warm dry iron to remove creases.

Sewing Directions

Fabric Key	Right Side	Wrong Side	Interfacing	Lining

Sew garment following **Sewing Directions**.

PN or machine-baste seams matching notches.

STITCH 5/8" (1.5cm) seams unless otherwise stated.

PRESS seams open unless otherwise indicated, clipping when necessary so seams will lie flat.

14. EASE-STITCH or **GATHER** - Loosen needle tension slightly. With RIGHT side up, stitch 5/8" (1.5cm) from cut edge using a long stitch. Stitch again 1/4" (6mm) away in the seam allowance.

EDGE FINISH - Neaten raw edges of seams, hems and facings using one of the following methods.

- Stitch 1/4" (6mm) from edge, turn under along stitching and stitch.
- Zig-zag or overlock raw edges.

17. INTERFACING — Pin interfacing to WRONG side of fabric. Cut across corners that will be enclosed with seams. Machine-baste 1/2" (1.3cm) from cut edge. (Shown only on first illustration). Trim interfacing close to machine-basting. For FUSIBLE interfacing, follow manufacturer's directions.

18. STAY-STITCH —Stitch 1/2" (1.3cm) from cut edge, in direction of arrows: (Shown only in the first illustration).

LAYERING — Trim seam allowance in layers.

- Layer enclosed seams
- Trim corners
- Clip inner curves
- Notch outer curves

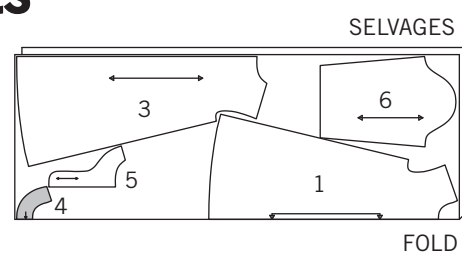
23. UNDERSTITCH —Press facing away from garment; press seam toward facing. Facing side up, understitch close to seam through facing and seam allowances.

Cutting Layouts

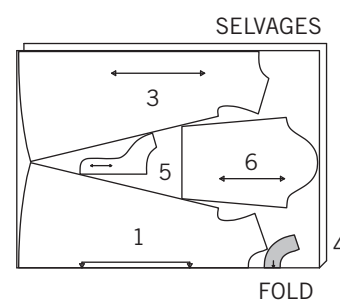
A

USE PIECES 1 3 4 5 6

1A 44" 45" (115CM) WITH NAP



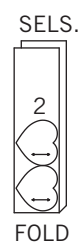
1B 58" 60" (150CM) WITH NAP



CONTRAST POCKETS

USE PIECE 2

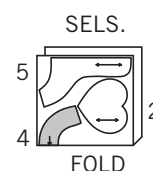
1C 44" 45" OR 58" 60" (115CM OR 150CM) WITH NAP



INTERFACING

USE PIECES 2 4 5

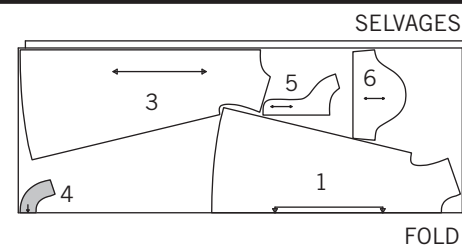
1D 20" TO 25" (51CM TO 64CM) FUSIBLE



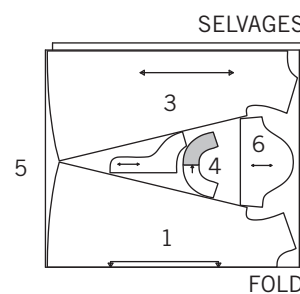
B

USE PIECES 1 3 4 5 6

2A 44" 45" (115CM) WITH NAP



2B 58" 60" (150CM) WITH NAP
CUT ONE OF PIECE 4

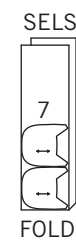


CONTRAST POCKETS

USE PIECE 7

2C 44" 45" OR 58" 60" (115CM OR 150CM) WITH NAP

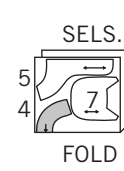
EYE APPLIQUE- CUT ONE OF PIECE 8 FROM FABRIC REMNANT
NOSE APPLIQUE- CUT ONE OF PIECE 9 FROM FABRIC REMNANT



INTERFACING

USE PIECES 4 5 7

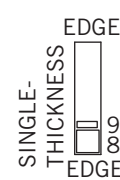
2D 20" TO 25" (51CM TO 64CM) FUSIBLE



PAPER BACKED FUSIBLE WEB

USE PIECES 8 9

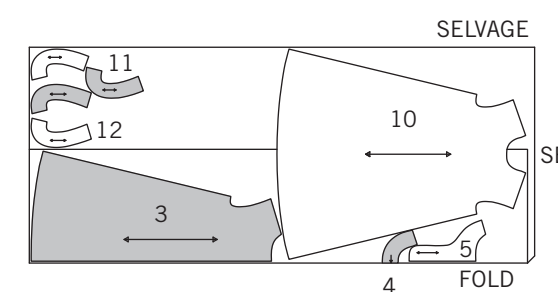
2E 15" TO 17" (38CM TO 43CM)



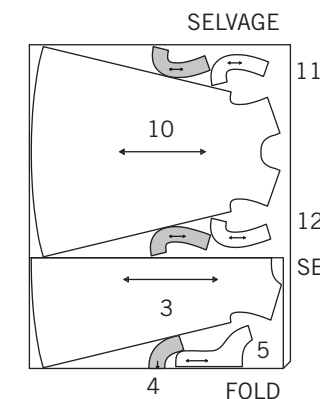
C

USE PIECES 3 4 5 10 11 12

3A 44" 45" (115CM) WITH NAP



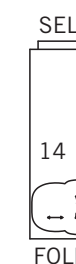
3B 58" 60" (150CM) WITH NAP



CONTRAST POCKET

USE PIECE 14

3C 44" 45" OR 58" 60" (115CM OR 150CM) WITH NAP



CUTTING LAYOUTS CONTINUED ON PAGE 2

Español

A USE LAS PIEZAS 1 3 4 5 6

1A 44" 45" (115CM) CON PELUSA

1B 58" 60" (150CM) CON PELUSA

BOLSILLOS CONTRASTANTES USE LA PIEZA 2
1C 44" 45" O 58" 60" (115CM O 150CM) CON PELUSA

ENTRETELA USE LAS PIEZAS 2 4 5

1D 20" A 25" (51CM A 64CM) ADHESIVA

B USE LAS PIEZAS 1 3 4 5 6

2A 44" 45" (115CM) CON PELUSA

2B 58" 60" (150CM) CON PELUSA

CORTAR UNO DE LA PIEZA 4

BOLSILLOS CONTRASTANTES USE LA PIEZA 7
2C 44" 45" O 58" 60" (115CM O 150CM) CON PELUSA

APLICACIÓN DEL OJO- CORTAR UNA PIEZA 8 DE UN PEDAZO DE TELA
APLICACIÓN DE LA NARIZ- CORTAR UNA PIEZA 9 DE UN PEDAZO DE TELA

ENTRETELA USE LAS PIEZAS 4 5 7

2D 20" A 25" (51CM A 64CM) ADHESIVA

MATERIA ADHESIVA CON SOPORTE DE PAPEL USE LAS PIEZAS 8 9

2E 15" A 17" (38CM A 43CM)

C USE LAS PIEZAS 3 4 5 10 11 12

3A 44" 45" (115CM) CON PELUSA

3B 58" 60" (150CM) CON PELUSA

BOLSILLOS CONTRASTANTES USE LA PIEZA 14
3C 44" 45" O 58" 60" (115CM O 150CM) CON PELUSA

SELVAGE(S) / SEL.(S)= ORILLAS

FOLD= DOBLEZ

SINGLE THICKNESS= ESPESOR SIMPLE

VER LA PÁGINA 2 PARA MÁS DIAGRAMA DE CORTE

HORN AND STAR APPLIQUE

USE PIECE 13

3D 44" 45" OR 58" 60" (115CM OR 150CM)
WITH NAP

CENTER MANE APPLIQUE- CUT ONE OF PIECE 15 FROM FABRIC REMNANT

LEFT MANE APPLIQUE- CUT ONE OF PIECE 16 FROM FABRIC REMNANT

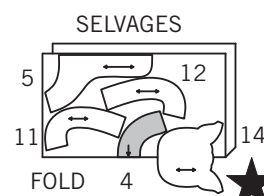
RIGHT MANE APPLIQUE- CUT ONE OF PIECE 17 FROM FABRIC REMNANT



INTERFACING

USE PIECES 4 5 11 12 14

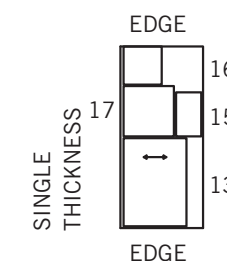
3E 20" TO 25" (51CM TO 64CM) FUSIBLE



PAPER BACKED FUSIBLE WEB

USE PIECES 13 15 16 17

3F 15" TO 17" (38CM TO 43CM)



Español

APLICACIÓN DE LOS CUERNOS Y DE LA ESTRELLA

USE LA PIEZA 13
3D 44" 45" O 58" 60" (115CM O 150CM)
CON PELUSA

APLICACIÓN CENTRAL DE LA MELENA- CORTAR UNA PIEZA 15 DE UN PEDAZO DE TELA

APLICACIÓN IZQUIERDA DE LA MELENA- CORTAR UNA PIEZA 16 DE UN PEDAZO DE TELA

APLICACIÓN DERECHA DE LA MELENA- CORTAR UNA PIEZA 17 DE UN PEDAZO DE TELA

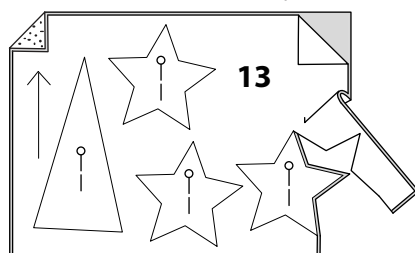
ENTRETELA

USE LAS PIEZAS 4 5 11 12 14
3E 20" A 25" (51CM A 64CM) ADHESIVA

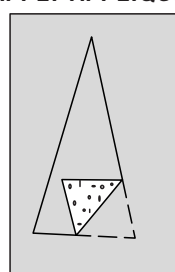
MATERIA ADHESIVA CON SOPORTE DE PAPEL

USE LAS PIEZAS 13 15 16 17
3F 15" TO 17" (38CM A 43CM)

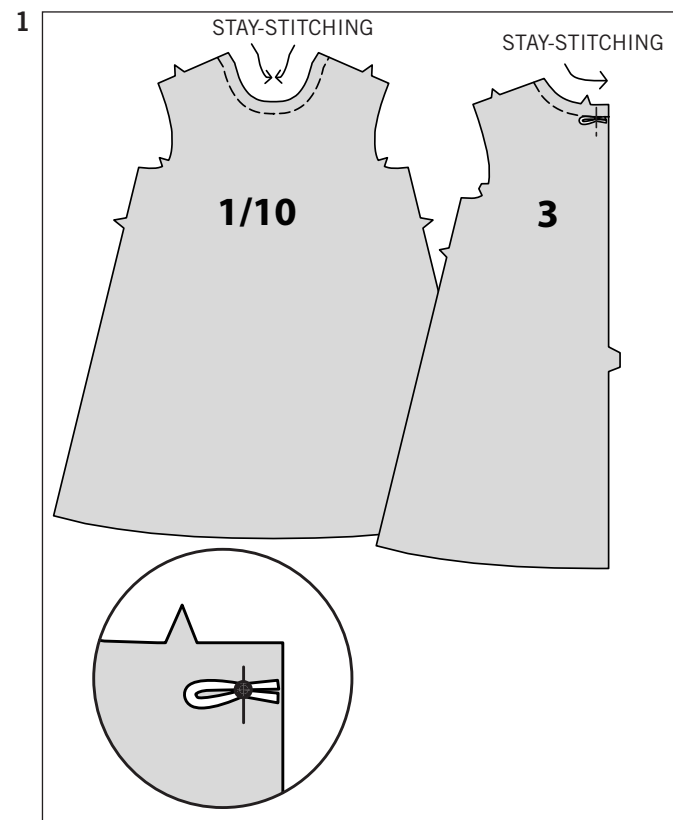
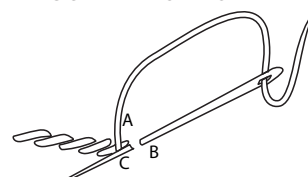
PREPARE APPLIQUE



APPLY APPLIQUE



OUTLINE STITCH



GLOSSARY OF SEWING METHODS

Sewing methods shown in *ITALICS* are defined below:

PREPARE APPLIQUE - Apply paper backed fusible web to *WRONG* side of applique fabric, following manufacturer's directions. Cut applique tissue block along outer solid line. Pin pattern to *RIGHT* side of prepared fabric. Cut out each applique. Transfer markings to *RIGHT* side of applique using a washable fabric marking pen or pencil.

APPLY APPLIQUE - Pin applique(s) to dress OR pocket as instructed in Sewing Directions. Be sure to clear all seam allowances. A glue stick can be used to temporarily hold the applique(s) in place before fusing. Fuse appliques in place, following manufacturer's directions. If you prefer, stitch, zig-zag (satin) stitch along raw edges after fusing; OR use fabric paint to seal the edges, allowing paint to dry.

OUTLINE STITCH - For outline stitching, work with as many threads as desired and use a large eyed needle. Bring thread to *RIGHT* side at A, down at B, up at C, etc. Always hold thread in the same position either all above or all below the needle for an even line.

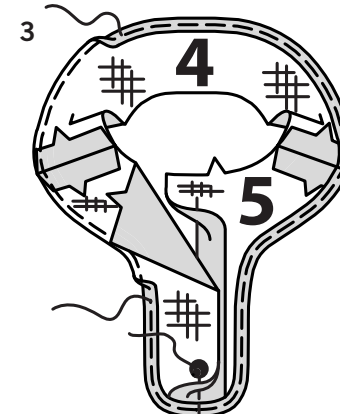
PATTERN PIECES WILL BE IDENTIFIED BY NUMBERS THE FIRST TIME THEY ARE USED.

STITCH SEAMS WITH RIGHT SIDES TOGETHER UNLESS OTHERWISE STATED.

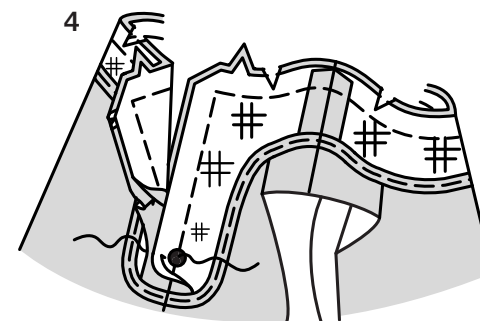
DRESS A, B, C

1. STAY-STITCH neck edge of front (1 OR 10) and back (3). To form loop closure, fold 2" (5cm) length of elastic cord in half. Pin ends to *LEFT* back edge at small dot, having raw edges even. Baste.

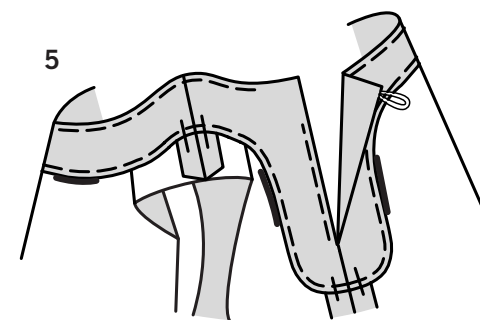
2. Stitch center back seam of back sections from lower edge to large dot, back-stitching at dot to reinforce the seam. Stitch front to back at shoulder seams.



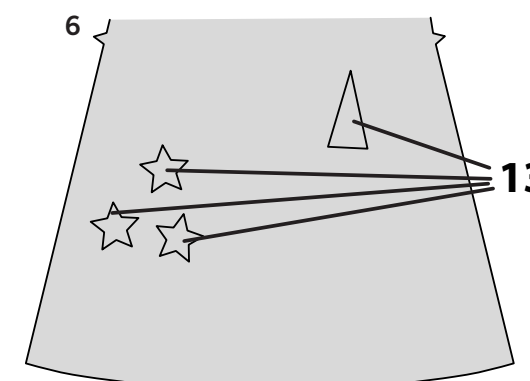
3. Apply **INTERFACING** to front facing (4) and back facing (5) sections. Stitch center back seam of back facing sections from lower edge to large dot, back-stitching at large dot to reinforce the seam. Stitch front facing to back facing at shoulder seams. **EDGE FINISH** unnotched curved edge.



4. With *RIGHT* sides together and raw edges even, pin facing to neck and back edges. Stitch, breaking and reinforcing stitching at large dot. **LAYER SEAM.**



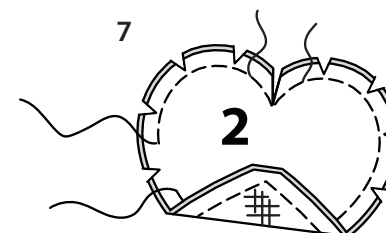
5. UNDERSTITCH facing as far as possible. Turn facing to *INSIDE*; press. To keep the facing from rolling to *OUTSIDE*, secure it at the seam allowances by tacking it by hand, stitching in the ditch, or using a small piece of fusible web.



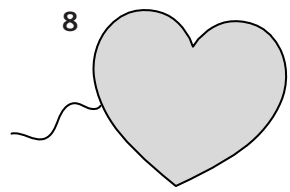
6. FOR VIEW C - PREPARE APPLIQUE and **APPLY APPLIQUE** horn and stars applique (13) to *OUTSIDE* of front between broken lines.

NOTE: You cut four pocket sections. Two will be interfaced and appear on the *OUTSIDE* of the dress. The remaining two will be used as facing and will be on *INSIDE* of pocket.

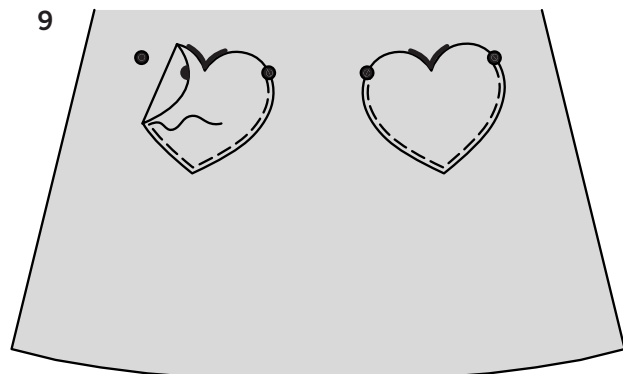
POCKET A



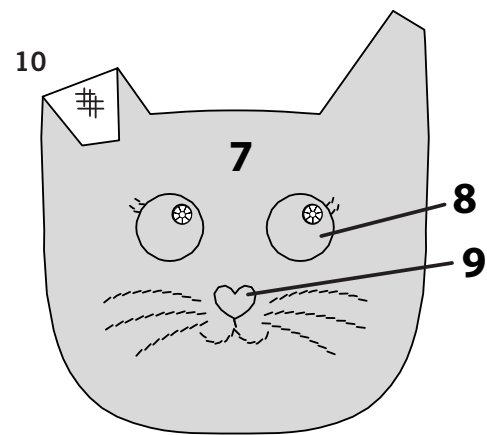
7. Apply **INTERFACING** to pocket (2) sections. With *RIGHT* sides together and raw edges even, pin pockets to pocket facing sections. To reinforce inner corner at center, stitch along stitching line. Stitch in a 3/8" seam, leaving an opening along one edge for turning. **LAYER SEAM**; clip to stitching at inner corner.



8. Turn pocket RIGHT side out; press. Slip-stitch opening closed.

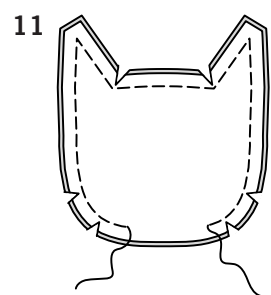


9. On OUTSIDE, pin pockets to dress, matching large dots. Stitch close to side and lower edge between large dots, back-stitching at dots to reinforce seam.

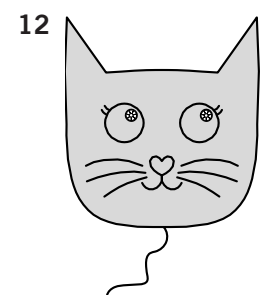


POCKET B

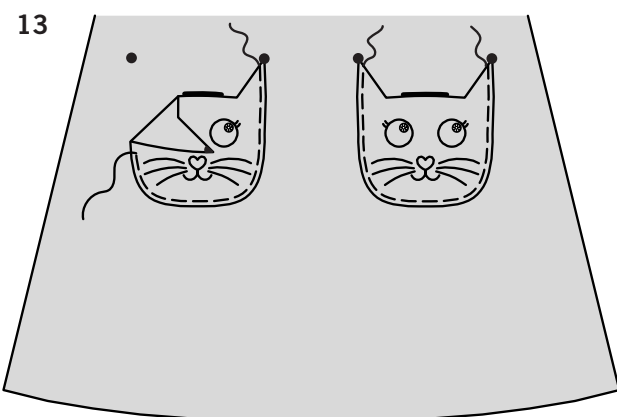
10. Apply **INTERFACING** to pocket (7) sections. On OUTSIDE, **OUTLINE STITCH** along solid lines. **PREPARE APPLIQUE** and **APPLY APPLIQUE** eye applique (8) and nose applique (9) between broken lines. Sew rhinestones to eyes centering over small inner circles.



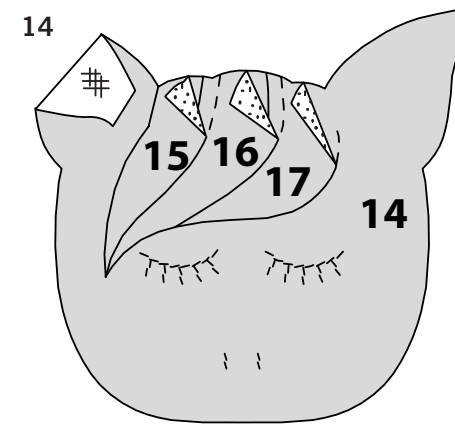
11. With RIGHT sides together and raw edges even, pin pockets to pocket facing sections. Stitch in a 3/8" seam, leaving an opening along lower edge for turning. **LAYER SEAM**; clip to inner corners.



12. Turn pocket RIGHT side out; press. Slip-stitch opening closed.

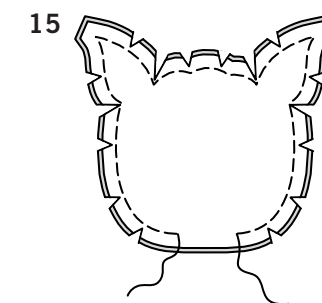


13. On OUTSIDE, pin pockets to dress, matching small dots. Stitch close to side and lower edge between small dots, back-stitching at dots to reinforce the seam.

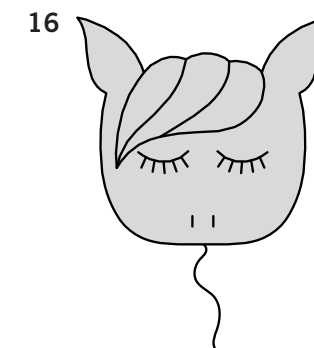


POCKET C

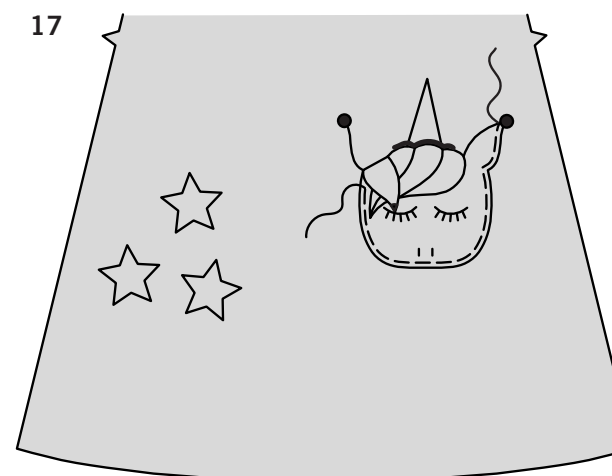
14. Apply **INTERFACING** to pocket (14). On OUTSIDE, **OUTLINE STITCH** along solid lines. **PREPARE APPLIQUE** and **APPLY APPLIQUE** right mane applique (17), center mane applique (16), and left mane applique (15) in this order, between broken lines.



15. With RIGHT sides together and raw edges even, pin pocket to pocket facing. Stitch in a 3/8" seam, leaving an opening along lower edge for turning. **LAYER SEAM**; clip to inner corners.

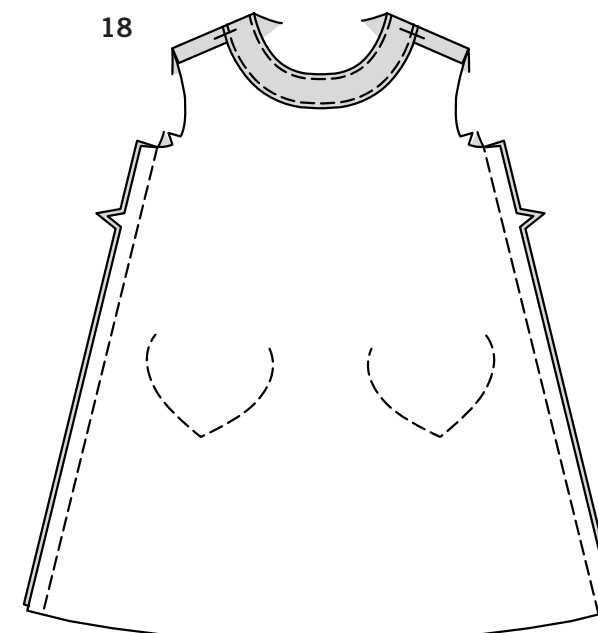


16. Turn pocket RIGHT side out; press. Slip stitch opening closed.



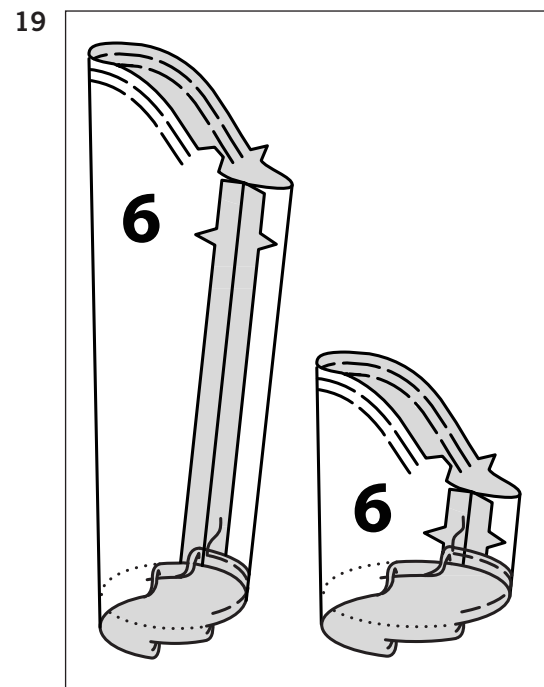
17. On OUTSIDE, pin pocket to dress, along pocket line. Stitch close to side and lower edge between large dots, backstitching at dots to reinforce the seam.

CONTINUE AS FOLLOWS FOR ALL VIEWS

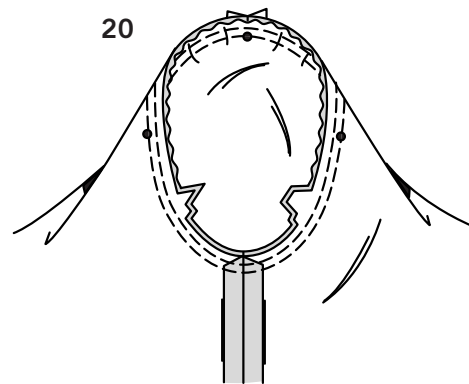


18. With RIGHT sides together and raw edges even, pin front to back at side seams. Stitch.

SLEEVE A, B

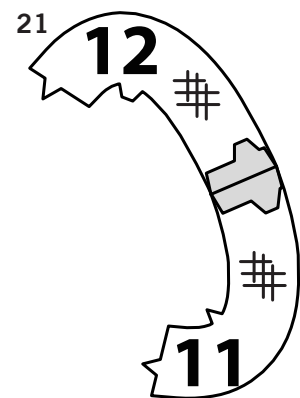


- 19.** To ease top of sleeve between notches, stitch along seam line and 1/4" (6mm) INSIDE seam line, using a long machine-stitch. Stitch underarm seam.
Press up hem allowance on lower edge of sleeve.
To form a narrow hem, tuck under raw edge to meet crease. Stitch close to inner pressed edge.

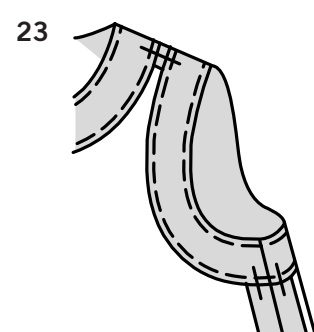
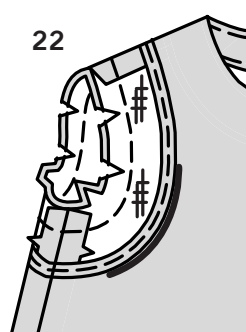


- 20.** Turn sleeve RIGHT side out. Hold garment WRONG side out with armhole toward you. With RIGHT sides together, pin sleeve to armhole edge with center small dot at shoulder seam, matching underarm seams, notches and remaining small dots. Pull up ease stitches to fit. To distribute fullness evenly, slide fabric along bobbin threads until there are no puckers or tucks on the seam line. Baste. Stitch. Stitch again 1/8" (3mm) from first stitching. Trim seam below notches close to stitching. Press only the seam allowance, shrinking out fullness.

ARMHOLE C

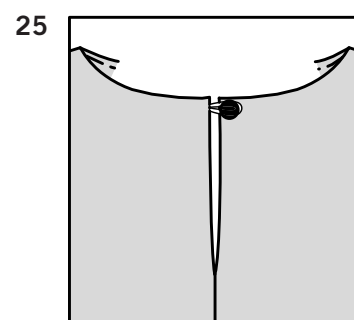
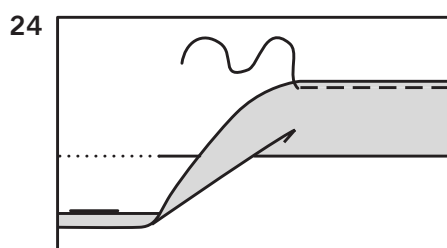


- 21.** Apply **INTERFACING** to front armhole facing (11) and back armhole facing (12) sections.
Stitch shoulder seam of armhole facing sections, matching notches.



- 22.** Stitch underarm seam. **EDGE FINISH** unnotched edge. With RIGHT sides together and raw edges even, stitch facing to armhole edge, matching shoulder and underarm seams. **LAYER SEAM.**
- 23.** **UNDERSTITCH** facing. Turn facing to INSIDE; press. To keep the facing from rolling to OUTSIDE, secure it at the seam allowances by tacking it by hand, stitching in the ditch, or using a small piece of fusible web.

CONTINUE AS FOLLOWS FOR ALL VIEWS



- 24.** Mark length. Press up hem along marking. Mark depth of hem; trim evenly.
To finish the raw edge, press under 1/4" (6mm).
Stitch hem in place along inner pressed edge.

- 25.** Sew button to RIGHT back under loop.

VESTIDOS A, B, C

- HAGA PUNTADA DE SOSTEN** al borde del escote frontal (1 o 10) y trasero (3). Para formar una cierre de presilla, doble por la mitad un elástico de 2" (5cm). Sujete con alfileres los extremos al borde trasero IZQUIERDO en el punto pequeño, emparejando los bordes no terminados. Hilvane.
- Cosa la costura trasera central de las secciones de la espalda, desde el borde inferior hasta el punto grande, retrocediendo la puntada y cosiendo en el punto, para reforzar la costura. Cosa el frente a la espalda en las costuras de los hombros.
- Aplique **ENTRETELA** a las secciones de la vista frontal (4) y trasera (5). Cosa la costura trasera central de las secciones traseras, desde el borde inferior hasta el punto grande, retrocediendo la puntada y cosiendo en el punto, para reforzar la costura. Cosa la vista frontal a la trasera en las costuras de los hombros. **TERMINE EL BORDE** curvo sin muescas.
- DERECHO CON DERECHO** y emparejados los bordes no terminados, sujete con alfileres la vista a los bordes del escote y trasero. Cosa, deteniendo y reforzando la puntada en el punto grande. **RECORTE A DIFERENTES NIVELES LA COSTURA.**
- HAGA PUNTADA OCULTA** a la vista hasta donde sea posible. Voltee la vista al INTERIOR; planche. Prevenir que la vista se enrolle al EXTERIOR, asegúrela a los márgenes de la costura con algunas costuras a mano, cosiendo en la ranura o usando un pedazo de material adhesivo.
- PARA EL MODELO C – PREPARE LA APLICACIÓN y APLIQUE LA APLICACIÓN** del cuerno y de las estrellas (13), al EXTERIOR frontal entre las líneas entrecortadas.

NOTA: Tiene cortadas cuatro secciones del bolsillo. Dos serán entretejadas y aparecen al EXTERIOR del vestido. Las dos restantes serán usadas como vistas y estarán al INTERIOR del bolsillo.

BOLSILLO A

- Aplique **ENTRETELA** a las secciones del bolsillo (2). **DERECHO CON DERECHO** y emparejando los bordes no terminados, sujete con alfileres los bolsillos a las secciones de la vista de los bolsillos. Para reforzar la esquina interior al centro, cosa a lo largo de la línea de la puntada. Cosa en una costura de 3/8" (1cm), dejando una abertura a lo largo de un borde para voltear. **RECORTE A DIFERENTES NIVELES LA COSTURA;** corte la puntada en la esquina interior.
- Voltee el bolsillo al lado DERECHO; planche. Haga puntada falsa para cerrar la abertura.
- En el EXTERIOR, sujete con alfileres los bolsillos al vestido, casando los puntos grandes. Cosa cerca del borde lateral e inferior entre los puntos grandes, retrocediendo la puntada y cosiendo en los puntos, para reforzar la costura.

BOLSILLO B

- Aplique **ENTRETELA** a las secciones del bolsillo (7). En el EXTERIOR, **HAGA PUNTADA DE DE TALLO** a lo largo de las líneas continuas. **PREPARE LA APLICACIÓN y APLIQUE LA APLICACIÓN** del ojo (8) y de la nariz (9) entre las líneas entrecortadas. Cosa pedrería a los ojos centrados sobre círculos interiores pequeños.
- DERECHO CON DERECHO** y emparejados los bordes no terminados, sujete con alfileres los bolsillos a las secciones de las vistas de los bolsillos.
Cosa en una costura de 3/8" (1cm), dejando una abertura a lo largo del borde inferior para voltear. **RECORTE A DIFERENTES NIVELES LA COSTURA;** corte la puntada en las esquinas interiores.
- Voltee el bolsillo al lado DERECHO; planche. Haga puntada falsa para cerrar la abertura.
- En el EXTERIOR, sujete con alfileres los bolsillos al vestido, casando los puntos pequeños. Cosa cerca del borde lateral e inferior entre los puntos pequeños, retrocediendo la puntada y cosiendo en los puntos, para reforzar la costura.

BOLSILLO C

- Aplique **ENTRETELA** al bolsillo (14). En el EXTERIOR, **HAGA PUNTADA DE TALLO** a lo largo de las líneas continuas. **PREPARE LA APLICACIÓN y APLIQUE LA APLICACIÓN** derecha de la melena (17), de la parte central de la melena (16) y del lado izquierdo de la melena (15) en este orden, entre las líneas entrecortadas.
- DERECHO CON DERECHO** y emparejados los bordes no terminados, sujete con alfileres el bolsillo a la vista del bolsillo. Cosa en una costura de 3/8" (1cm), dejando una abertura a lo largo del borde inferior para voltear. **RECORTE A DIFERENTES NIVELES LA COSTURA;** corte la puntada en las esquinas interiores.
- Voltee el bolsillo al lado DERECHO; planche. Haga puntada falsa para cerrar la abertura.
- En el EXTERIOR, sujete con alfileres el bolsillo al vestido, a lo largo de la línea del bolsillo. Cosa cerca del borde lateral e inferior entre los puntos grandes, retrocediendo la puntada y cosiendo en los puntos, para reforzar la costura.

CONTINUE COMO SIGUE PARA TODOS LOS MODELOS

- DERECHO CON DERECHO** y emparejados los bordes no terminados, sujete con alfileres el frente a la espalda en las costuras laterales. Cosa.

MANGAS A, B

- Para fruncir la parte superior de la manga entre las muescas, cosa a lo largo de la línea de la costura y a 1/4" (6mm), al INTERIOR de la línea de la costura, usando una puntada larga de la máquina. Cosa la costura de debajo de los brazos. Planche el margen del dobladillo hacia arriba sobre el borde inferior de la manga. Para formar el dobladillo angosto, doble hacia adentro el borde no terminado hasta el doblez. Cosa cerca del borde doblado interior.
- Voltee la manga al lado DERECHO. Sostenga la prenda al REVES con la sisa hacia usted. **DERECHO CON DERECHO**, sujete con alfileres la manga al borde de la sisa, con el punto pequeño central en la costura de los hombros, casando las costuras de debajo de los brazos, las muescas y los puntos pequeños restantes. Hale de las costuras fruncidas para ajustar. Para distribuir uniformemente la amplitud, deslice la tela a lo largo de los hilos de la bobina, hasta que no haya arrugas o pliegues en la línea de la costura. Hilvane. Cosa. Cosa de nuevo a 1/8" (3mm) de la puntada previa. Recorte la costura por debajo de las muescas cerca de la puntada. Planche únicamente el margen de la costura, disminuyendo de esa manera la amplitud.

SISA C

- Aplique **ENTRETELA** a las secciones de la vista frontal de la sisa (11) y de la trasera (12). Cosa la costura de los hombros de las secciones de la vista de la sisa, casando las muescas.
- Cosa la costura de debajo de los brazos. **TERMINE EL BORDE** sin muescas. **DERECHO CON DERECHO** y emparejados los bordes no terminados, cosa la vista al borde de la sisa, casando las costuras de los hombros y de debajo de los brazos. **RECORTE A DIFERENTES NIVELES LA COSTURA.**
- HAGA PUNTADA OCULTA** a la vista. Voltee la vista al INTERIOR; planche. Para prevenir que la vista se enrolle al EXTERIOR, asegúrela a los márgenes de la costura mediante algunas costuras a mano, cosiendo en la ranura o usando un pedazo de material adhesivo.

CONTINUE COMO SIGUE PARA TODOS LOS MODELOS

- Marque el largo. Planche el dobladillo hacia arriba a lo largo de la marca. Marque el ancho del dobladillo; recorte uniformemente. Para terminar el borde no terminado, planche un doblez de 1/4" (6mm). Cosa el dobladillo en su lugar, a lo largo del borde doblado interior.
- Cosa el botón a la parte trasera DERECHA debajo de la presilla.