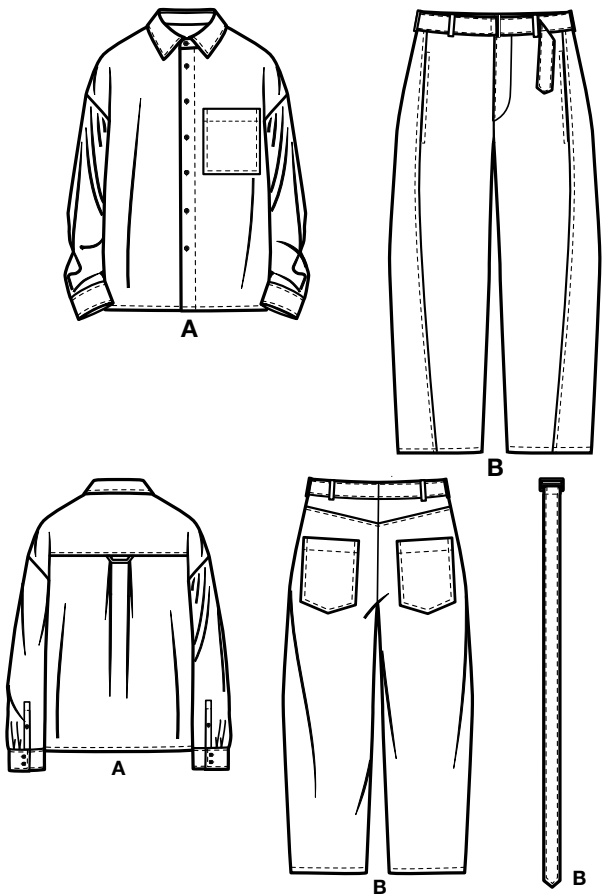
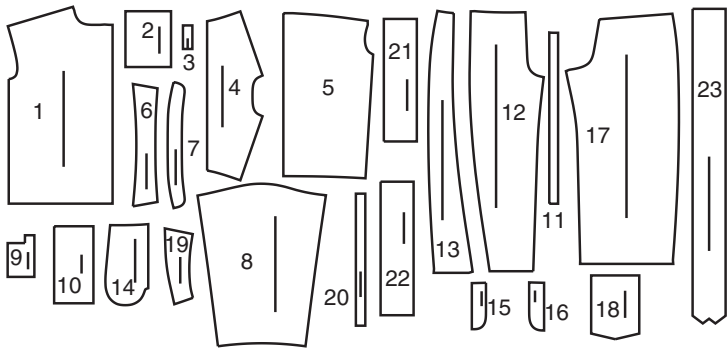


@norrisdantaford

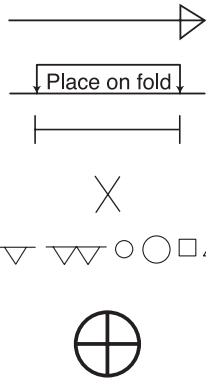


23 PATTERN PIECES



- 1 Front-A
- 2 Pocket-A
- 3 Loop-A
- 4 Yoke Back-A
- 5 Back-A
- 6 Collar-A
- 7 Collar band-A
- 8 Sleeve-A
- 9 Placket-A
- 10 Cuff-A
- 11 Guide for Buttonholes-A
- 12 Front-B
- 13 Side Front-B
- 14 Pocket-B
- 15 Right Fly-B
- 16 Left Fly-B
- 17 Back-B
- 18 Back Pocket-B
- 19 Yoke Back-B
- 20 Carrier-B
- 21 Left Waistband-B
- 22 Right Waistband-B
- 23 Belt-B

PATTERN MARKINGS



GRAINLINE: Place on straight grain of fabric, parallel to selvage or fold.

FOLDLINE: Place line on fold of fabric.

BUTTONHOLE MARKING: Indicates exact length and placement of buttonholes.

BUTTON MARKING: Indicates button placement.

NOTCHES AND SYMBOLS: For matching seams and construction details.

Indicates the Bustline, Waistline, Hip and/or Biceps. Measurements refer to circumference of Finished Garment (Body Measurement + Wearing Ease + Design Ease). Adjust pattern if necessary. The measurement excludes pleats, tucks, darts and seam allowances.

SEAM ALLOWANCE: 5/8" (1.5cm) included unless otherwise indicated, but not printed on tissue.

ADJUST IF NECESSARY

Lengthen or Shorten at adjustment lines (==) or where indicated on pattern. If substantial length is added, you may need to purchase additional fabric.

TO SHORTEN: Crease along adjustment line. Make a fold half the amount needed. Tape in place.

TO LENGTHEN: Slash between adjustment lines. Spread amount as needed, keeping edges parallel. Tape over paper.

When Alteration lines are not on tissue, lengthen or shorten at lower edge.

CUTTING AND MARKING

SHRINK FABRIC if not labeled pre-shrunk. Press.

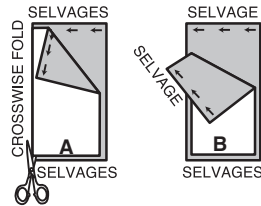
CIRCLE LAYOUT for View, Size, Fabric Width.

Use **WITH NAP** layout for fabrics with one-way designs, nap, pile or surface shading. Because most knits have surface shading, a with nap layout is used.

For **DOUBLE THICKNESS (WITH FOLD)** - fold fabric with right sides together.

*** DOUBLE THICKNESS (WITHOUT FOLD)** - For fabrics with nap, fold fabric crosswise, right sides together. Mark as shown. Cut along crosswise fold of fabric (A). Turn upper layer 180° so arrows go in same direction and place over lower layer, right sides together (B).

For **SINGLE THICKNESS** - place fabric right side up. (For Fur Pile fabrics, place pile side down.)



★ Cut other pieces first, allowing enough fabric to cut this piece. Open fabric. For "Cut 1" pieces, cut piece once on single layer of fabric with piece face up on right side of fabric.

Pattern may have cutting lines for several sizes. Select the proper cutting line or pattern pieces for your size.

Before **CUTTING** place all pieces on fabric according to layout. Pin. (**Layouts show approximate position of pattern pieces; position may vary according to your pattern size.**) Cut **ACCURATELY**, cutting notches outward.

Before removing pattern, **TRANSFER MARKINGS** and lines of construction to Wrong Side of fabric, using the Pin and Chalk Pencil method or Tracing Paper and Dressmaker Wheel. Markings needed on right side of fabric should be thread traced.

NOTE: Broken-line boxes (a! b! c!) in layouts represent pieces cut by measurements provided.

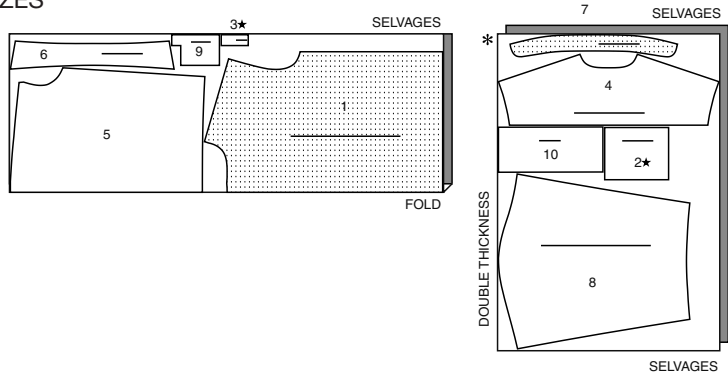
CUTTING LAYOUTS

RIGHT SIDE OF PATTERN	WRONG SIDE OF PATTERN	RIGHT SIDE OF FABRIC	WRONG SIDE OF FABRIC
-----------------------	-----------------------	----------------------	----------------------

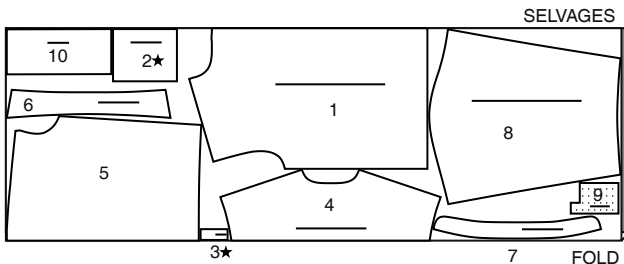
SHIRT A

USE PIECES 1 2 3 4 5 6 7 8 9 10

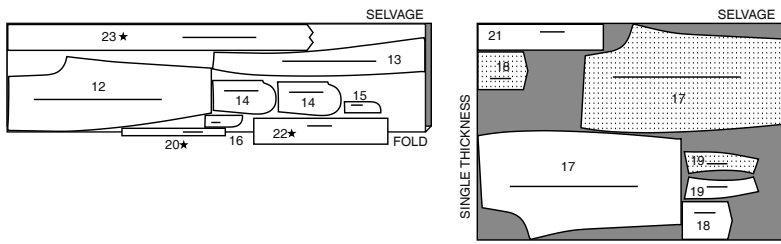
45" (115 CM)
WITH NAP
ALL SIZES



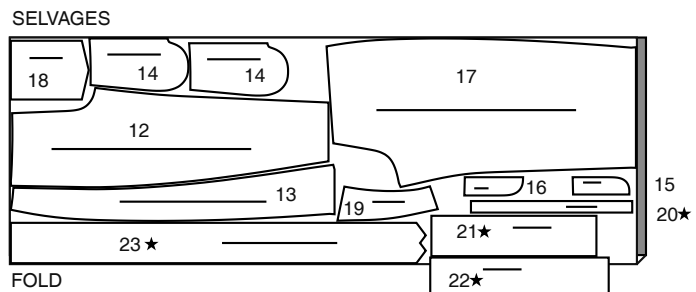
60" (150 CM)
WITH NAP
ALL SIZES



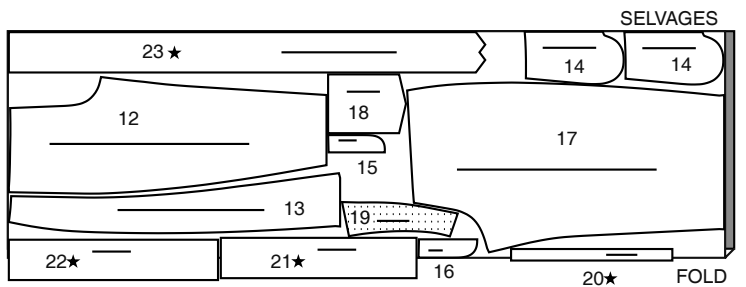
45" (115 CM)
WITH NAP
SIZES 52



60" (150 CM)
WITH NAP
SIZES 34 36 38 40 42 44



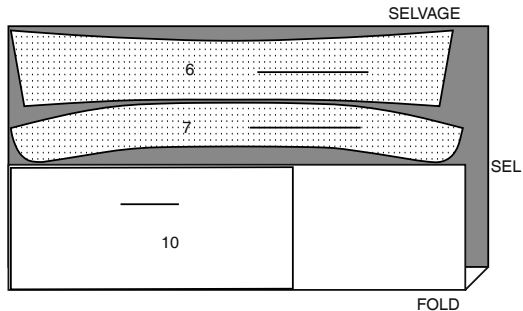
60" (150 CM)
WITH NAP
SIZES 46 48 50 52



INTERFACING A

USE PIECES 6 7 10

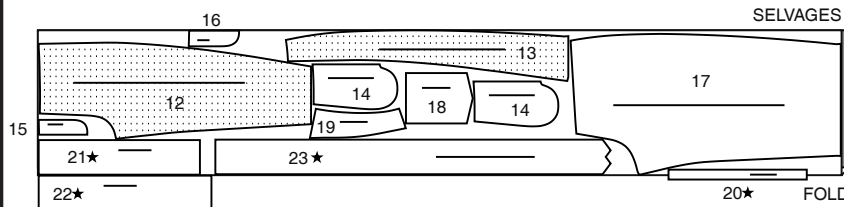
20" (51 CM)
WITHOUT NAP
ALL SIZES



JEANS B

USE PIECES 12 13 14 15 16 17 18 19 20 21 22 23

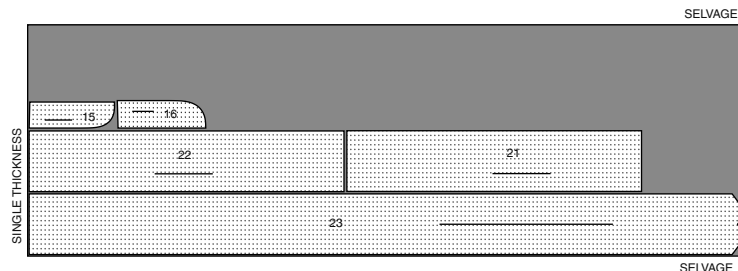
45" (115 CM)
WITH NAP
SIZES 34 36 38 40 42 44 46 48 50



INTERFACING B

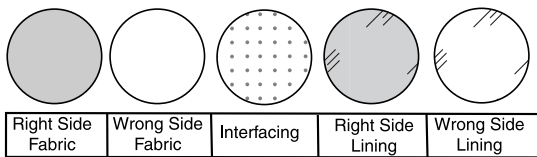
USE PIECES 15 16 21 22 23

20" (51 CM)
WITHOUT NAP
ALL SIZES



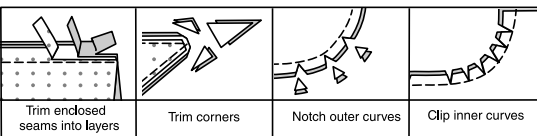
SEWING INFORMATION

FABRIC KEY



SEAM ALLOWANCES

Use 5/8" (1.5cm) seam allowances unless otherwise indicated.



PIN AND FIT

Pin or baste seams, **RIGHT SIDE TOGETHER**, matching notches. Fit garment before stitching major seams.

PRESS

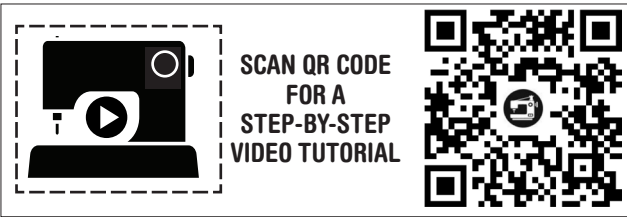
Press seam allowances flat; then open unless otherwise stated. Clip where necessary so they lie flat.

GLOSSARY

GLOSSARY OF SEWING METHODS

Sewing methods shown in **BOLD** are defined below:

STAYSTITCH – Stitch 1/2" (1.3cm) from cut edge in direction of arrows. This stitching stays in permanently to prevent stretching on curved edges. (Shown only in the first illustration.)



@norrisdantaford

PATTERN PIECES WILL BE IDENTIFIED BY NUMBERS THE FIRST TIME THEY ARE USED.

STITCH 5/8" (1.5CM) SEAMS WITH RIGHT SIDES TOGETHER UNLESS OTHERWISE STATED.

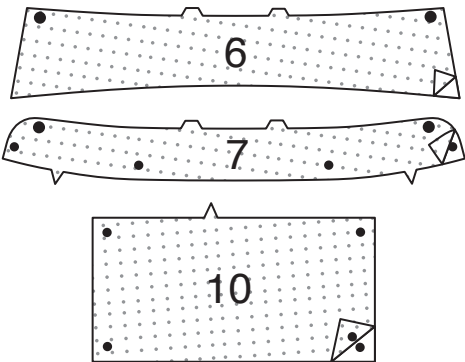
SEWING DIRECTIONS

SHIRT A

INTERFACING

1. Pin interfacing to WRONG side of COLLAR (6), COLLAR BAND (7), and CUFF (10).

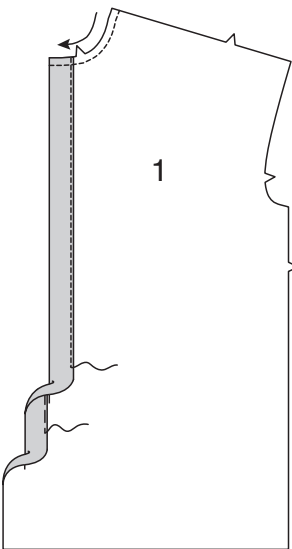
Fuse in place following manufacturer's directions.



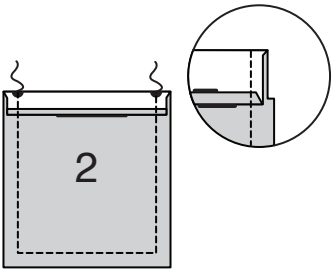
FRONT AND BACK

2. Turn front edge of FRONT (1) to INSIDE along fold for interfacing; press. Baste close to inner edge. Fold pressed edge to INSIDE along fold for facing; press. Stitch close to inner pressed edge. Remove basting.

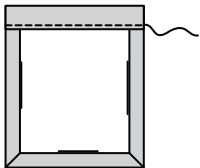
STAYSTITCH neck edge of front in the direction of the arrows.



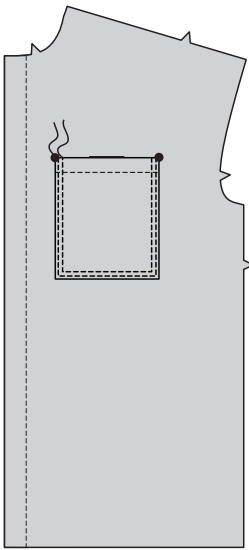
3. Press under 1/4" (6mm) on upper edge of POCKET (2). Turn upper edge to OUTSIDE along foldline, forming facing. Stitch along seam line on raw edges. Trim seam allowance in the facing area to 1/4" (6mm).



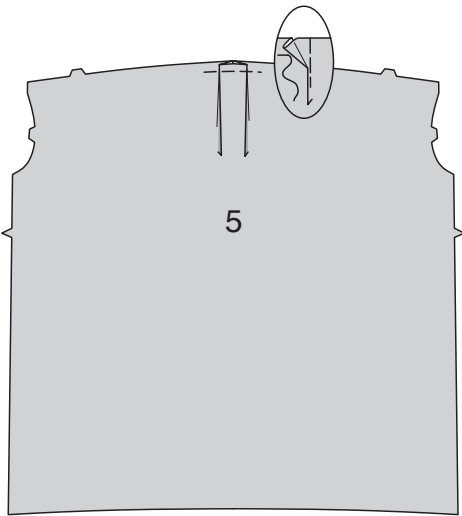
4. Turn corners RIGHT side out, turning facing to the WRONG side; press, pressing under raw edges along stitching. Stitch facing close to inner edge.



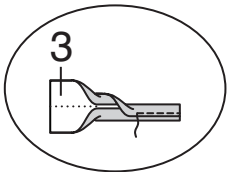
5. On OUTSIDE, pin pocket to front, matching large dots. Stitch close to side and lower edges and 1/4" (6mm) away.



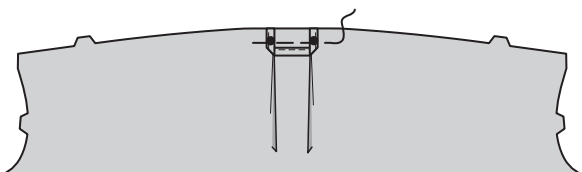
6. To make pleats on BACK (5), on OUTSIDE, fold along solid lines. Bring folds to broken lines; pin. Baste across raw edge.



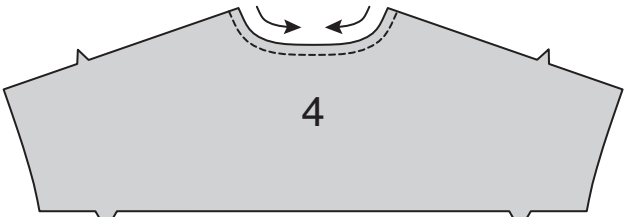
7. Fold LOOP (3) in half, lengthwise with WRONG sides together. Press, setting in a crease. Open out long edges and turn them to WRONG side so they meet at the crease. Press. Fold loop in half, lengthwise, bringing pressed edges together. Stitch close to long double folded edge.



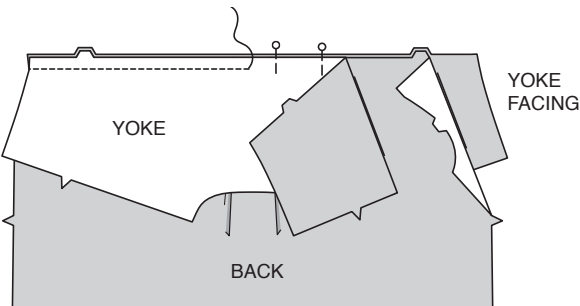
8. On OUTSIDE, pin ends of loop to back over small dots having raw edges even. Baste.



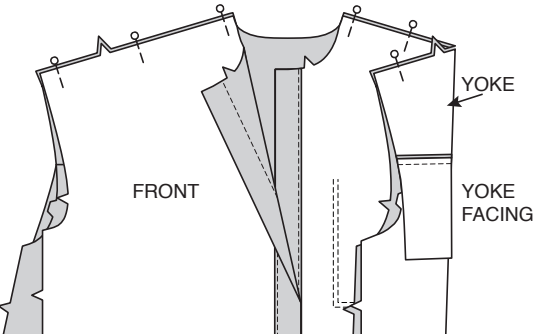
9. **STAYSTITCH** neck edge of YOKE BACK (4) sections in the direction of the arrows.



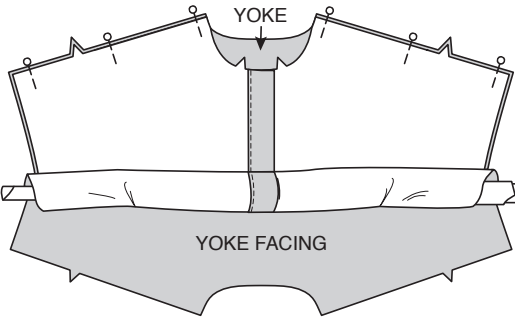
10. With RIGHT sides together, pin yoke back to back, having raw edges even. Pin RIGHT side of yoke facing to WRONG side of back, having raw edges even. Stitch through all thicknesses. Trim seam.



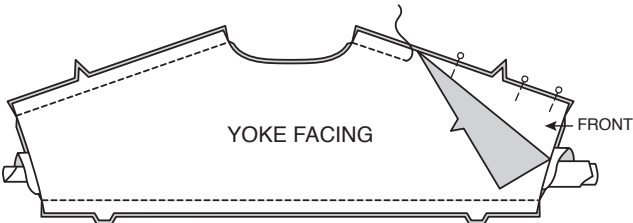
11. Press yoke up, leaving yoke facing down toward back, as shown. With RIGHT sides together, pin yoke to fronts at shoulder edges.



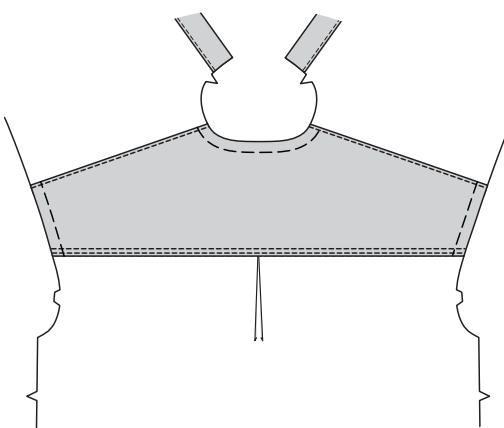
12. Roll back and both front sections together toward yoke, as shown.



13. Bring yoke facing up and pin shoulder edges together. (Rolled shirt is between yoke layers.) Stitch through all thicknesses, being careful not to catch in rolled shirt. Trim seams



14. Pull out rolled shirt through one armhole opening, turning shirt RIGHT side out. Press all yoke seams. Machine-baste neck and armhole edges together. Edgestitch yoke close to shoulder seam. Edgestitch and topstitch yoke 1/4" (6mm) from back seam

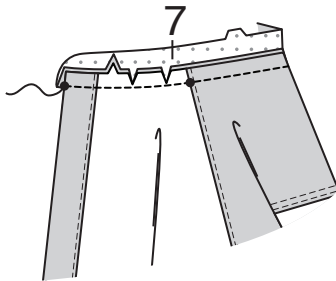


NECK BAND AND COLLAR

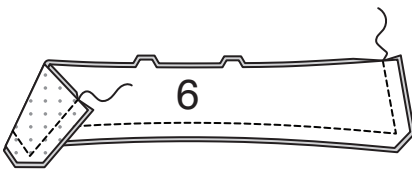
15. Clip neck edge of shirt to staystitching.

With RIGHT sides together, pin single notched edge of COLLAR BAND (7) to neck edge, matching centers back and placing small dots at shoulder seams. (Collar band extends 5/8" (1.5cm) beyond front opening edges.) Stitch neck edge. Trim seam; clip curves.

Press band out; press seam toward band.

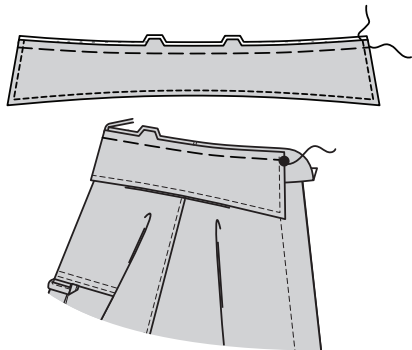


16. With RIGHT sides together and raw edges even, stitch facing to COLLAR (6), leaving notched edges open. Trim seam and corners.



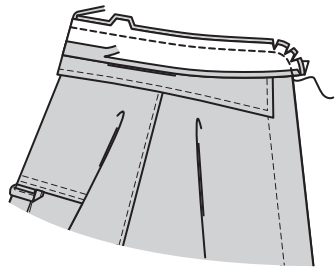
17. Turn collar; press. Machine-baste raw edges together. Topstitch 1/4" (6mm) from finished edge.

With RIGHT sides together and raw edges even, pin collar (facing side) to collar band, matching centers back and double notches and placing ends at large dots. Machine-baste.

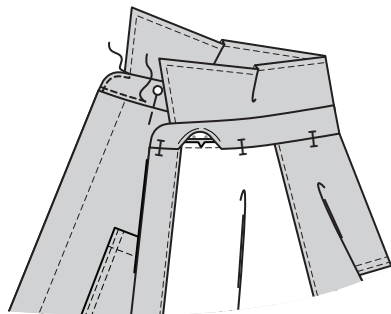


18. Press under 5/8" (1.5cm) on single notched edge of collar band facing; trim to 1/4" (6mm).

With RIGHT sides together, pin collar band facing to collar band (over collar), matching centers. Stitch front and double notched edge. Trim seam; clip curves.

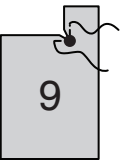


19. Turn band facing to INSIDE; press. Pin pressed edge of facing over seam, placing pins on OUTSIDE. On OUTSIDE, stitch collar band close seam, catching in pressed edge of facing on INSIDE. Edge stitch front edge of collar band, connecting to topstitching on collar.

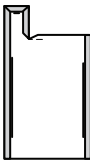


SLEEVE AND PLACKET

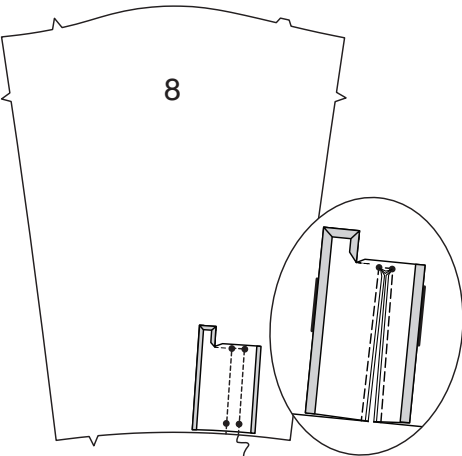
20. To reinforce inner corner of PLACKET (9) at the large dot, stitch along seamline for about 1/2" (1.3cm) each side of large dot, stitching through dot, as shown. Clip to stitching at dots.



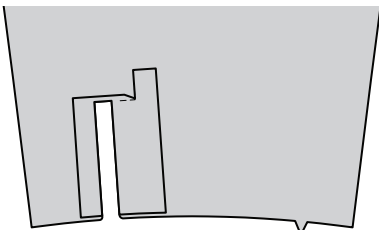
21. Turn in 1/4" (6mm) on sides and upper end of placket, folding in fullness at corners. Press.



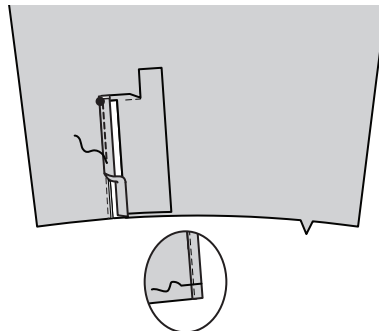
22. Pin RIGHT side of placket to WRONG side of SLEEVE (8), matching stitching lines. Stitch along stitching lines, pivoting at small dots. Slash between stitching, clipping diagonally to small dots.



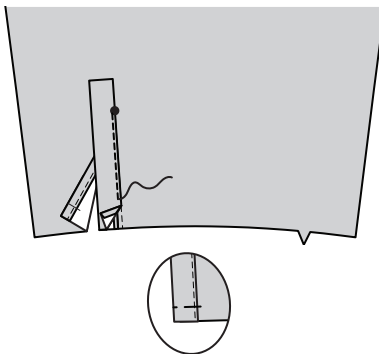
23. Turn placket to OUTSIDE. Press seams toward placket and square end up.



24. Fold shorter side of placket along foldline, placing pressed edge over seam. Stitch close to edge, from small dot to lower edge. Baste across lower edge.

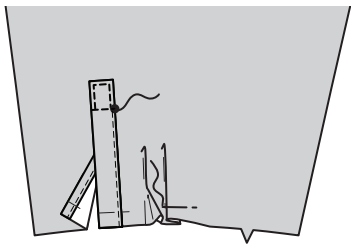


25. Fold remaining side of placket along foldline, placing pressed edge over seam. Stitch close to edge from small dot to lower edge. Baste across lower edge.

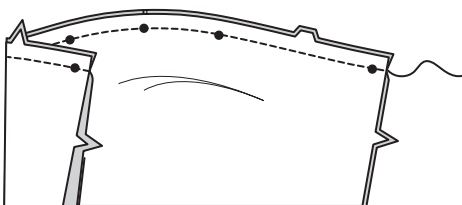


26. Pin upper edge of placket to sleeve. Stitch close to edges. And along stitching line, as shown.

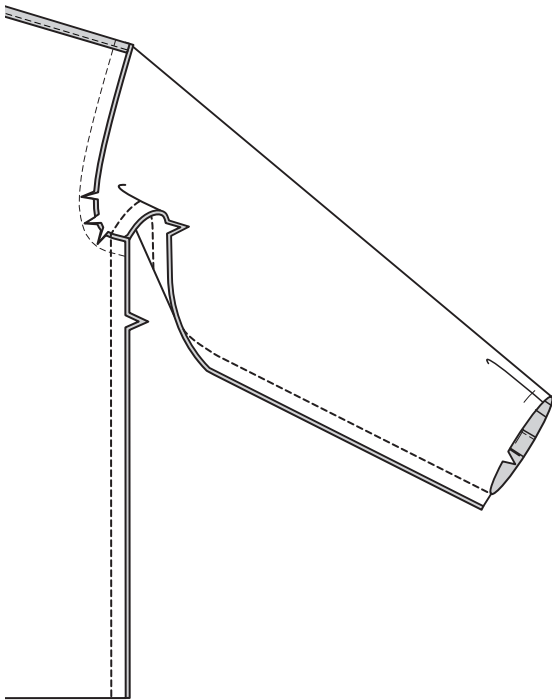
To make pleats at lower edge of sleeve, on OUTSIDE, fold along solid lines. Bring folds to broken lines. Baste across lower edge.



27. With RIGHT sides together, pin sleeve to armhole edge with center small dot at shoulder seam, matching notches and remaining small dots. Stitch. Clip curves. Press seam toward sleeve.

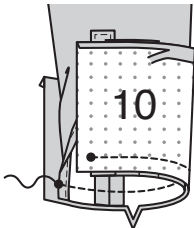


28. Stitch front to back at entire underarm seam, matching armhole seams.



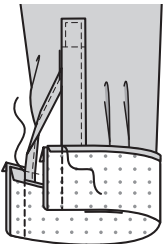
29. Press under 5/8" (1.5cm) on unnotched edge of CUFF (10). Trim to 1/4" (6mm).

With RIGHT sides together, pin sleeve to cuff, placing opening edges at small dots. Baste. Stitch. Trim seam.

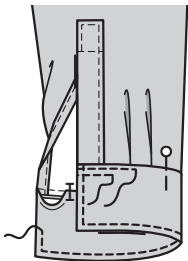


30. Press seam toward cuff, pressing cuff out.

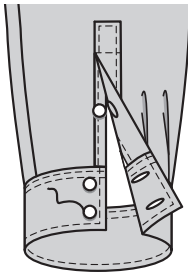
Fold cuff along fold line, with RIGHT sides together. Stitch ends. Trim seams.



31. Turn cuff; press. On INSIDE, pin pressed edge of cuff over seam, placing pins on OUTSIDE. On OUTSIDE, edgestitch cuff close to seam, catching in pressed edge of cuff on INSIDE and removing pins as you come to them. Topstitch cuff 1/4" (6mm) from first stitching and finished edges.

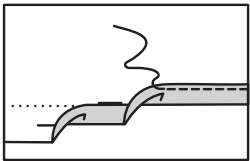


32. Make buttonholes on cuff and placket at markings. Sew buttons at small dots.



FINISHING

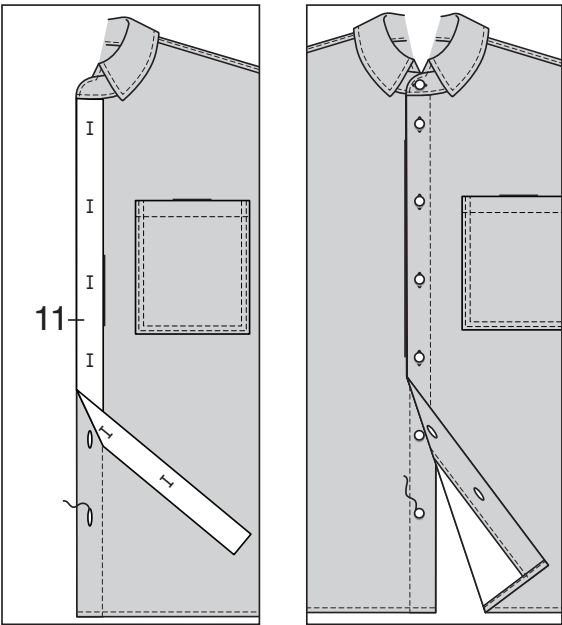
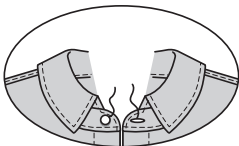
33. Press up 5/8" (1.5cm) hem allowance on lower edge of shirt. To form narrow hem, tuck under raw edge to meet crease. Press. Stitch hem in place.



34. To mark buttonholes in LEFT front, place GUIDE FOR BUTTONHOLES (11) along finished edge of shirt, matching centers, as shown. Transfer buttonhole markings to shirt. Make buttonholes at markings.

Lap LEFT front over RIGHT, matching centers. Sew buttons under buttonholes.

Make buttonhole in left end of neck band at marking. Sew button to right end at small dot.

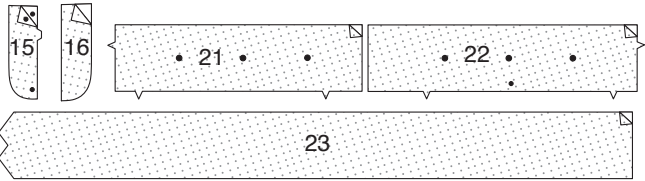


JEANS B

INTERFACING

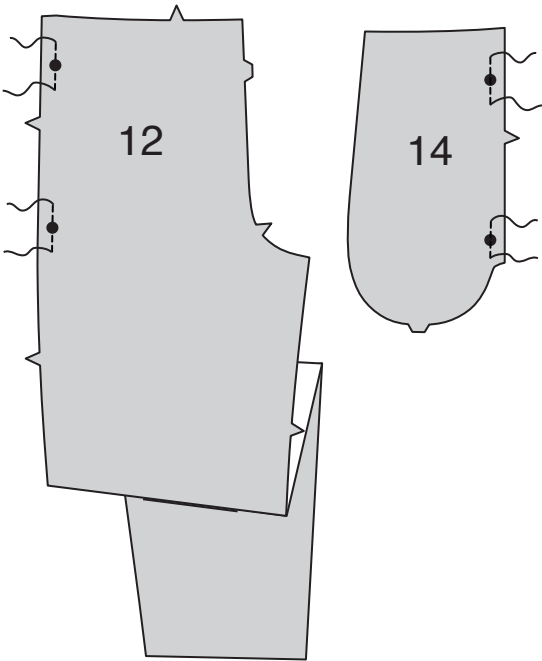
1. Pin interfacing to WRONG side of RIGHT FLY (15), LEFT FLY (16), LEFT WAISTBAND (21), RIGHT WAISTBAND (22), and BELT (23).

Fuse in place following manufacturer's directions.

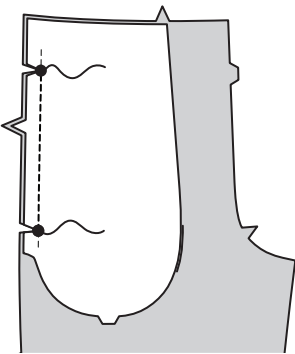


FRONT AND POCKET

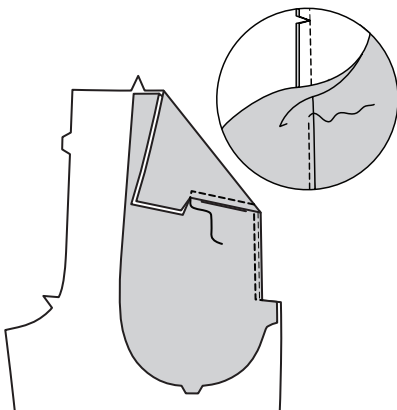
2. To reinforce side front edges of FRONT (12) and POCKET (14) at the large dots, stitch along seamline for about 1/2" (1.3cm) each side of large dots, stitching through dots, as shown.



3. With RIGHT sides together, pin pocket to front along side front edge, matching large dots and notches. Stitch along seamline between the large dots. Clip seam allowance to stitching at large dots. Trim seam.



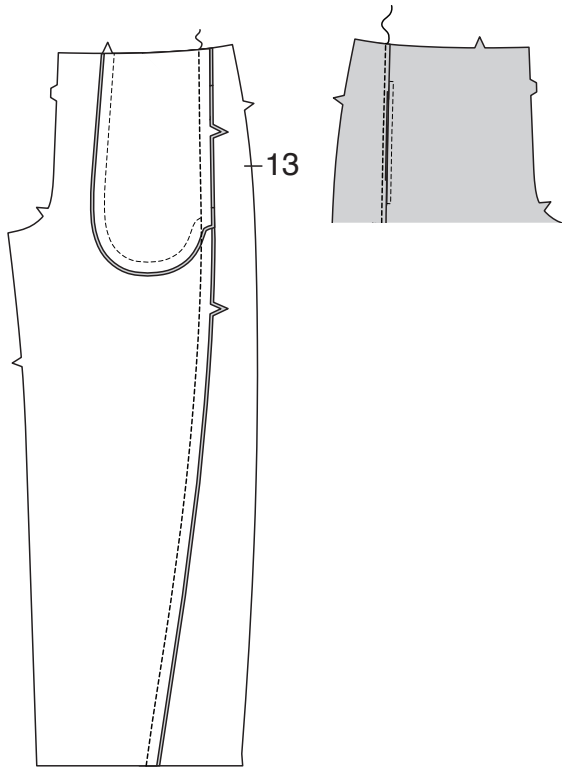
4. UNDERSTITCH the pocket. Turn pocket to INSIDE; press. Topstitch front 1/4" (6mm) from finished edge, squaring stitching at opening ends.



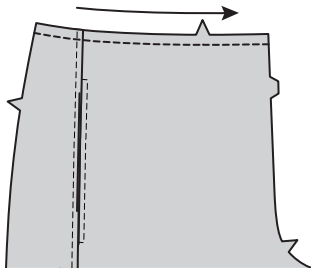
5. With RIGHT sides together and raw edges even, pin pocket to pocket facing, matching large dots and notches. Stitch notched, curved edge. Baste raw edges together.



6. With RIGHT sides together and raw edges even, pin front to SIDE FRONT (13) along side front edge. Stitch, being careful not to catch in finished edge of pocket. Press seam toward side front. Topstitch side front 1/4" (6mm) from seam.

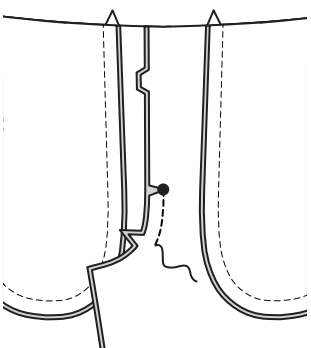


7. STAYSTITCH upper edge of front sections in the direction of the arrows.

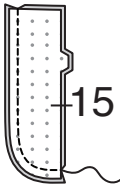


FLY

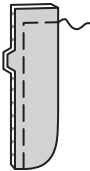
8. Stitch front sections together at center front between large dot and notch. Clip RIGHT front seam allowance to stitching at large dot.



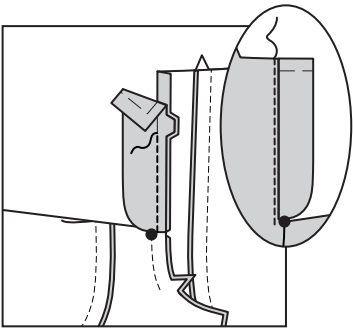
9. With RIGHT sides together and raw edges even, pin RIGHT FLY (15) sections together. Stitch curved edge in a 3/8" (1cm) seam. Trim seam.



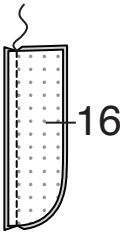
10. Turn right fly; press. Baste raw edges together.



11. With RIGHT sides together and raw edges even, pin right fly to right front opening edge, matching small dots and notches. Stitch in a 3/8" (1cm) seam. Press seam toward front, pressing fly out. Edge stitch right front close to seam.



12. With RIGHT sides together and raw edges even, pin LEFT FLY (16) sections together. Stitch along straight edge in a 3/8" (1cm) seam.

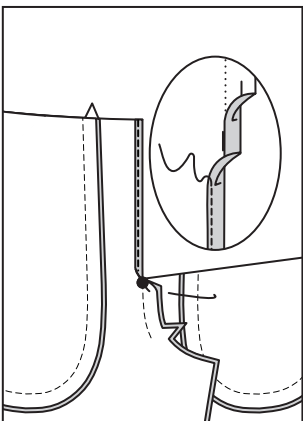


13. Turn fly; press. Baste long edges together along 5/8" (1.5cm) seam line.

Make buttonholes at markings.

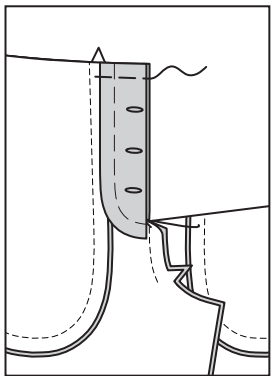


14. Press under 5/8" (1.5cm) hem allowance on front edge of left front above the large dot. To form narrow hem, tuck under raw edge to meet crease. Press. Stitch hem in place.

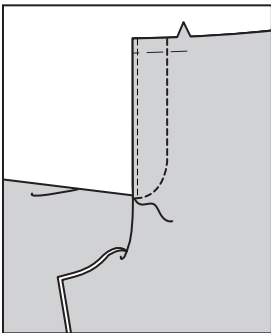


15. On INSIDE, lap left fly over left front placing basting along stitching line, having upper raw edges even. Pin in place. (Front edge of left fly will be 1/8" (3mm) away from front edge of left front).

Baste upper raw edges together.



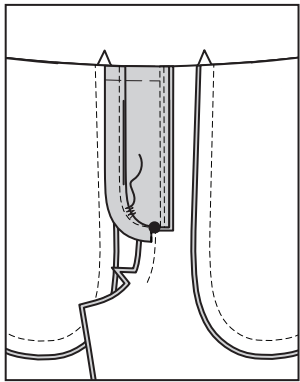
16. On OUTSIDE, topstitch left front along stitching line, stitching through left fly and keeping right front free.



17. To secure both left and right fly on INSIDE, lap right front over left, matching centers front.

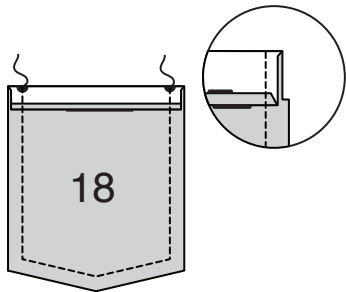
Starting on stitching line approximately 1-1/4" (3.2cm) away from center front, make a 1/4" (6mm) long tack through all thicknesses,

TIP – For tack, use a fine and narrow zigzag stitch OR a straight stitch, stitching back and forth two or three times.

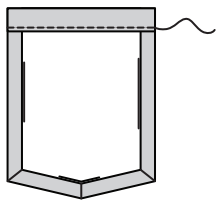


BACK, YOKE, AND POCKET

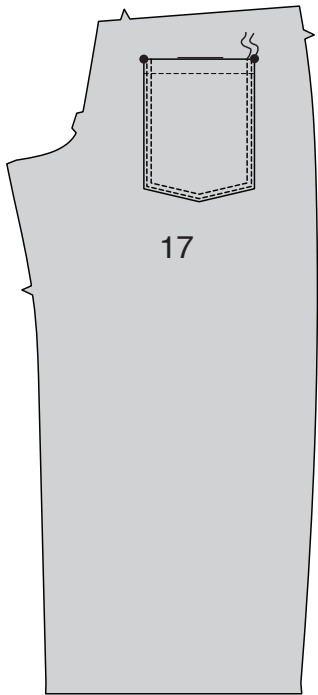
18. Press under 1/4" (6mm) on upper edge of BACK POCKET (18). Turn upper edge to OUTSIDE along fold line, forming facing. Stitch along seam line on raw edges. Trim seam allowance in the facing area to 1/4" (6mm).



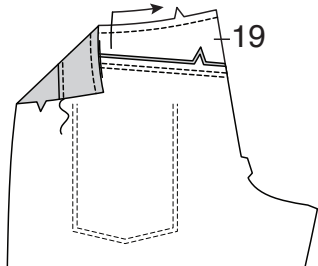
19. Turn corners RIGHT side out, turning facing to the WRONG side; press, pressing under raw edges along stitching. Stitch facing close to inner edge.



20. On OUTSIDE, pin pocket to BACK (17), matching large dots. Stitch close to side and lower edges and 1/4" (6mm) away.

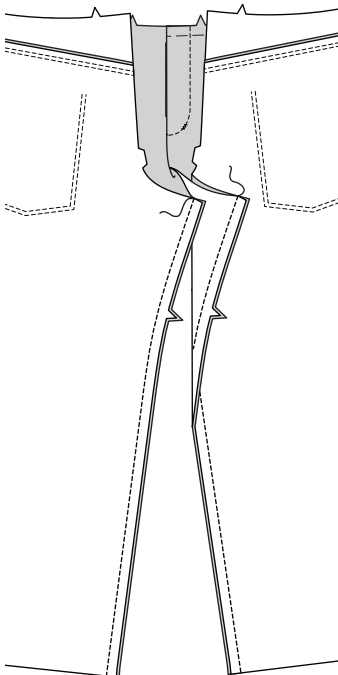


21. STAYSTITCH upper edge of YOKE BACK (19) in the direction of the arrows. Pin lower edge of yoke back to upper edge of back, matching notches. Stitch. Press seams toward yoke. Topstitch yoke 1/4" (6mm) from seam.

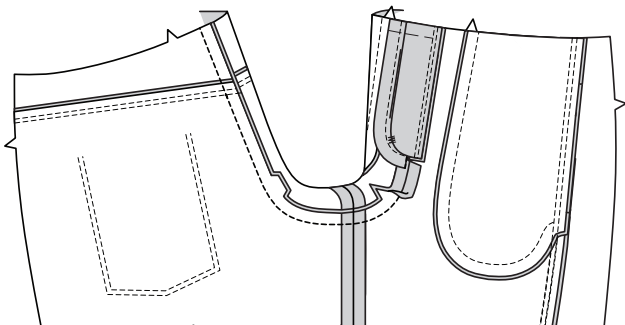


CONTINUE AS FOLLOWS

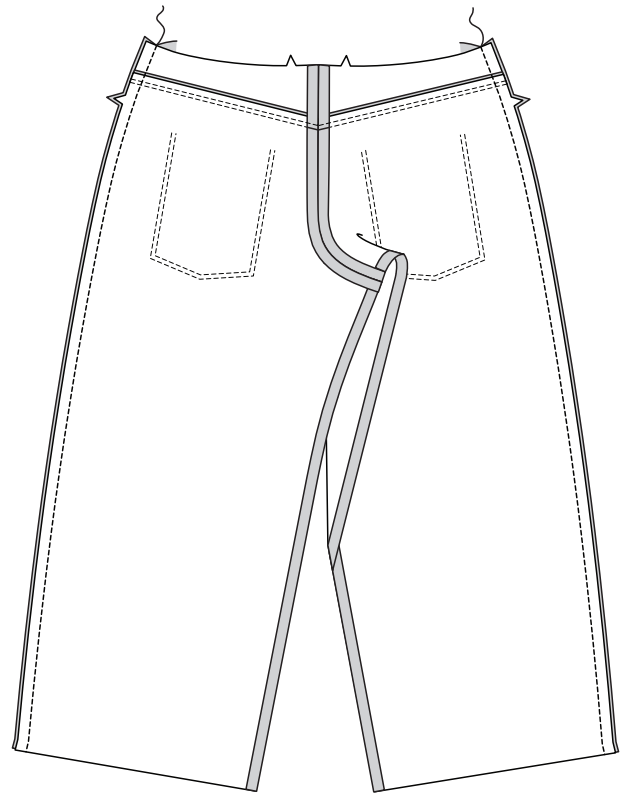
22. Stitch front to back at inner leg edges.



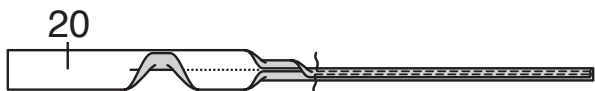
23. With RIGHT sides together, pin center seam, matching inner leg seams and notches. Stitch. To reinforce seam, stitch again over first stitching.



24. Stitch front to back at side edges.



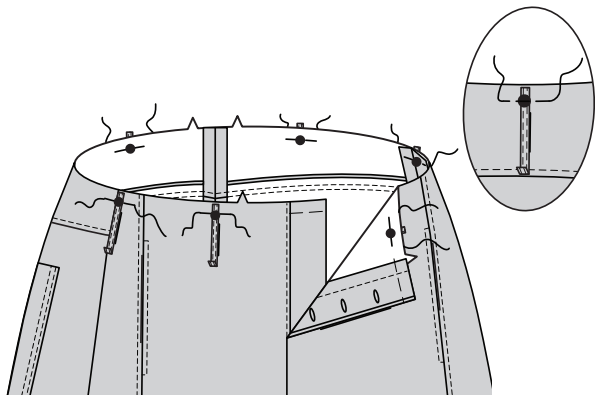
25. Fold CARRIER (20) in half, lengthwise with WRONG sides together. Press, setting in a crease. Open out long edges of carrier and turn them to WRONG side so that they meet at the crease. Press. Fold carrier in half lengthwise, bringing pressed edges together. Stitch close to both long edges.



26. Cut carrier in six sections 3-1/2" (9cm) long each.

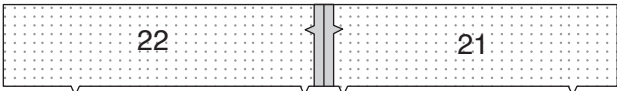
Press under 1/4" (6mm) on one edge of each carrier.

On OUTSIDE, baste unpressed ends of carriers to upper edge of pants over large dots, having raw edges even.

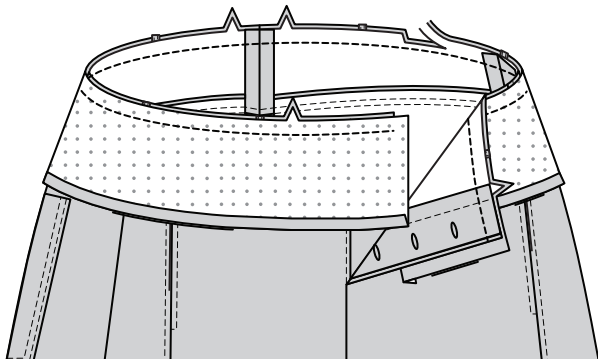


WAISTBAND

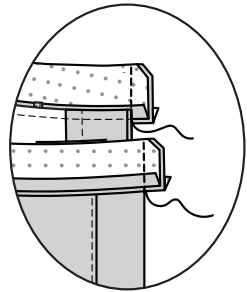
27. Stitch LEFT WAISTBAND (21) to RIGHT WAISTBAND (22) at center back edges.



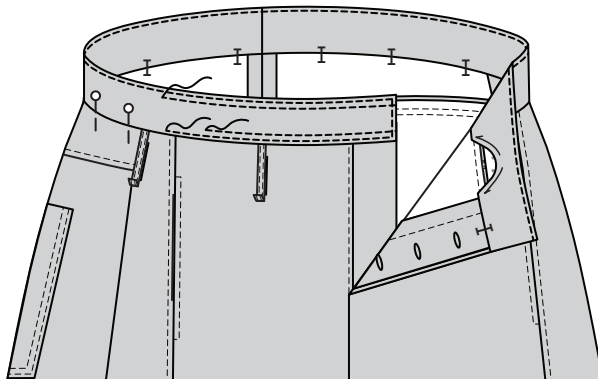
28. Press under 1/2" (1.3cm) on long unnotched edge of waistband. With RIGHT sides together and raw edges even, pin waistband to pants, matching centers, seams, and notches, placing inner small dots at side seams. Stitch. Trim seam. Press seam toward band, pressing band out.



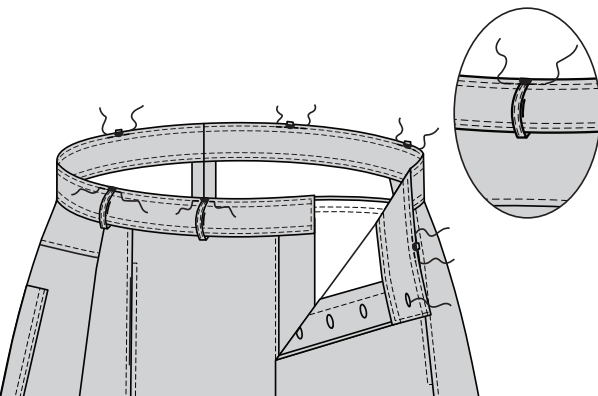
29. On ends, turn waistband to OUTSIDE along foldline, bringing RIGHT sides together. Stitch ends. Trim seam and corners.



30. Turn ends RIGHT side out and waistband to INSIDE along foldline. On INSIDE, pin pressed edge of band over seam, placing pins on OUTSIDE. On OUTSIDE, edgestitch band close to seam and finished edges, catching in pressed edge of waistband facing on the INSIDE. Topstitch 1/4" (6mm) from seam and upper finished edge.

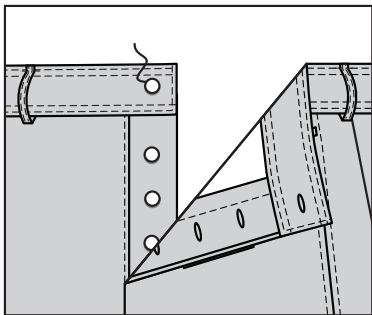


31. Turn pressed edges of carriers up over large dots; pin. Edgestitch in place. Make buttonhole at marking.

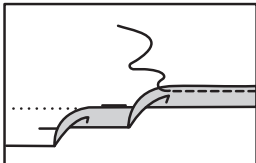


FINISHING AND BELT

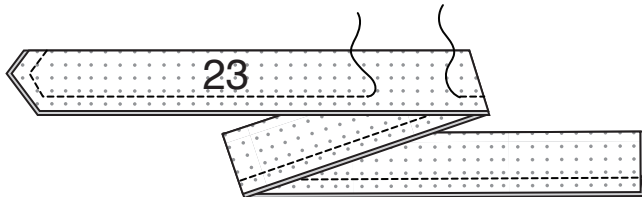
32. Apply 5/8" (1.5cm) jeans buttons to right front fly and waistband at small dots, following manufacturer's directions.



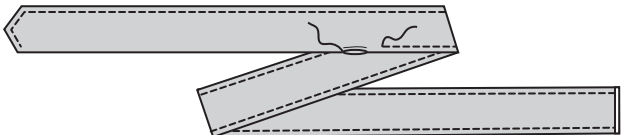
33. Press up 5/8" (1.5cm) hem allowance. Turn under raw edge to meet crease. Edgestitch hem in place.



34. Fold BELT (23) in half, lengthwise, with RIGHT sides together and raw edges even. Stitch long edge and chevron end in a 5/8" (1.5cm) seam, leaving an opening in long edge for turning.



35. Turn belt; press. Slipstitch opening closed. Topstitch 1/4" (6mm) from finished edges.



36. Turn under raw edge on belt 1/4" (6mm); press. Thread end through outer bar of buckle. Fold end to UNDERSIDE along foldline. Stitch in place along inner pressed edge.

