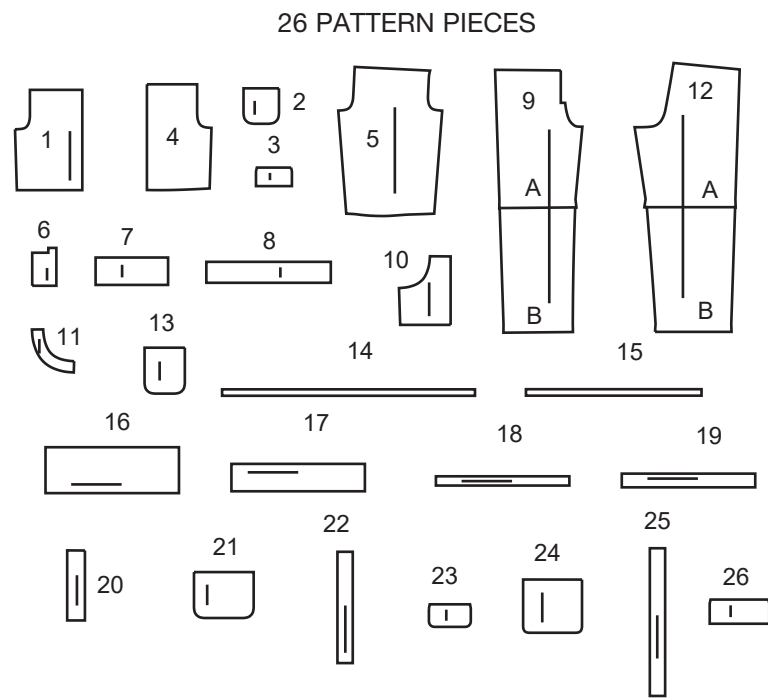
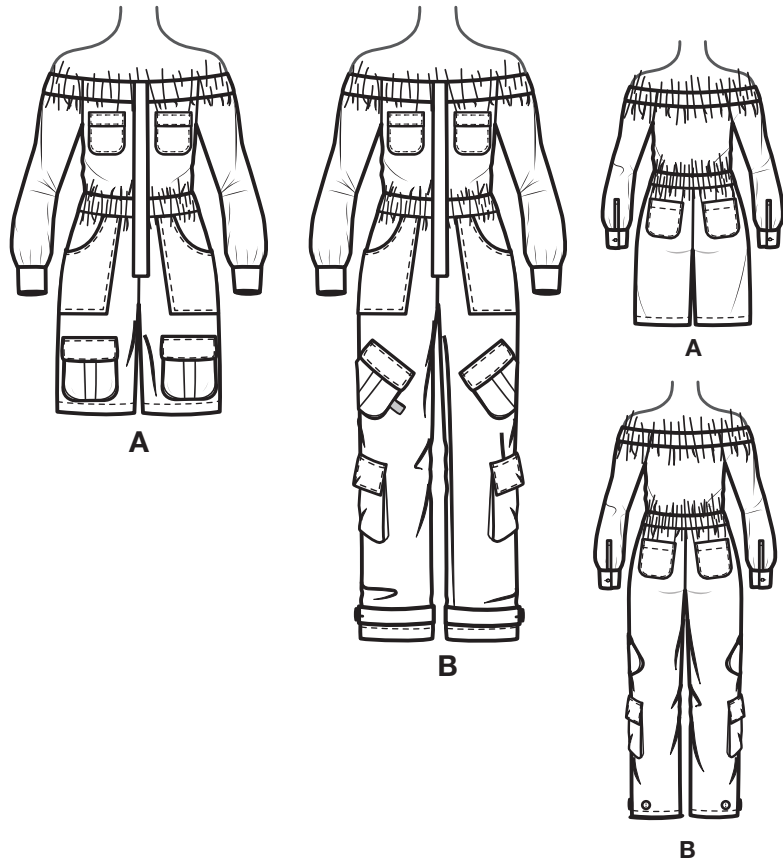
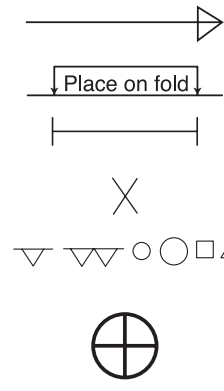


@thecornyrainbow



- 1 BODICE FRONT - A,B
- 2 UPPER POCKET - A,B
- 3 UPPER FLAP - A,B
- 4 BODICE BACK - A,B
- 5 SLEEVE - A,B
- 6 PLACKET - A,B
- 7 CUFF - A,B
- 8 CASING - A,B
- 9 PANTS FRONT - A,B
- 10 LOWER POCKET - A,B
- 11 POCKET FACING - A,B
- 12 PANTS BACK - A,B
- 13 BACK POCKET - A,B
- 14 ELASTIC GUIDE FOR NECK - A,B
- 15 ELASTIC GUIDE FOR WAIST - A,B
- 16 RIGHT BAND - A,B
- 17 LEFT BAND - A,B
- 18 RIGHT INTERFACING - A,B
- 19 LEFT INTERFACING - A,B
- 20 TAB - A,B
- 21 LOWER POCKET - A,B (SMALL)
- 22 GUSSET - A (SMALL)
- 23 LOWER FLAP - A,B (SMALL)
- 24 LOWER POCKET - B (LARGE)
- 25 GUSSET - B (LARGE)
- 26 LOWER FLAP - B (LARGE)

PATTERN MARKINGS



GRAINLINE: Place on straight grain of fabric, parallel to selvage or fold.

FOLDLINE: Place line on fold of fabric.

BUTTONHOLE MARKING: Indicates exact length and placement of buttonholes.

BUTTON MARKING: Indicates button placement.

NOTCHES AND SYMBOLS: For matching seams and construction details.

Indicates the Bustline, Waistline, Hip and/or Biceps. Measurements refer to circumference of Finished Garment (Body Measurement + Wearing Ease + Design Ease). Adjust pattern if necessary. The measurement excludes pleats, tucks, darts and seam allowances.

SEAM ALLOWANCE: 5/8" (1.5cm) included unless otherwise indicated, but not printed on tissue.

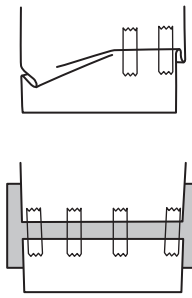
ADJUST IF NECESSARY

Lengthen or Shorten at adjustment lines (==) or where indicated on pattern. If substantial length is added, you may need to purchase additional fabric.

TO SHORTEN: Crease along adjustment line. Make a fold half the amount needed. Tape in place.

TO LENGTHEN: Slash between adjustment lines. Spread amount as needed, keeping edges parallel. Tape over paper.

When Alteration lines are not on tissue, lengthen or shorten at lower edge.



CUTTING AND MARKING

SHRINK FABRIC if not labeled pre-shrunk. Press.

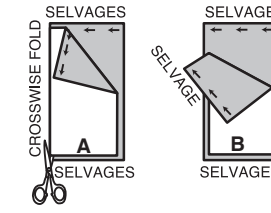
CIRCLE LAYOUT for View, Size, Fabric Width.

Use **WITH NAP** layout for fabrics with one-way designs, nap, pile or surface shading. Because most knits have surface shading, a with nap layout is used.

For **DOUBLE THICKNESS (WITH FOLD)** - fold fabric with right sides together.

*** DOUBLE THICKNESS (WITHOUT FOLD)** - For fabrics with nap, fold fabric crosswise, right sides together. Mark as shown. Cut along crosswise fold of fabric (A). Turn upper layer 180° so arrows go in same direction and place over lower layer, right sides together (B).

For **SINGLE THICKNESS** - place fabric right side up. (For Fur Pile fabrics, place pile side down.)



★ Cut other pieces first, allowing enough fabric to cut this piece. Open fabric. For "Cut 1" pieces, cut piece once on single layer of fabric with piece face up on right side of fabric.

Pattern may have cutting lines for several sizes. Select the proper cutting line or pattern pieces for your size.

Before **CUTTING** place all pieces on fabric according to layout. Pin. (**Layouts show approximate position of pattern pieces; position may vary according to your pattern size.**) Cut **ACCURATELY**, cutting notches outward.

Before removing pattern, **TRANSFER MARKINGS** and lines of construction to Wrong Side of fabric, using the Pin and Chalk Pencil method or Tracing Paper and Dressmaker Wheel. Markings needed on right side of fabric should be thread traced.

NOTE: Broken-line boxes (a! b! c!) in layouts represent pieces cut by measurements provided.

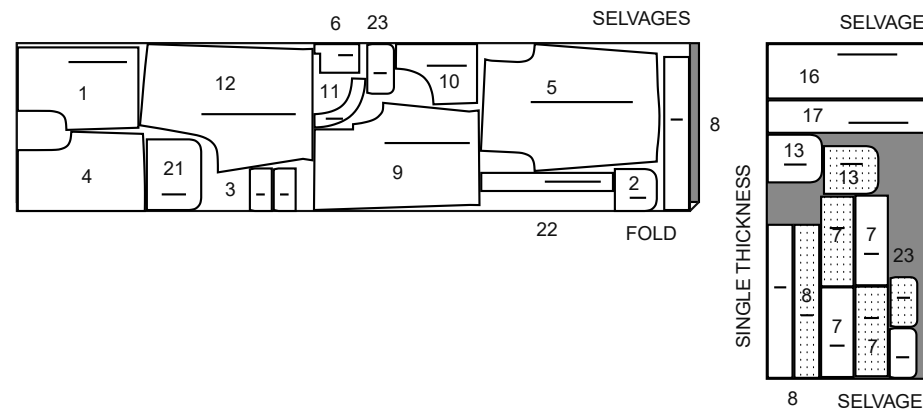
CUTTING LAYOUTS

| | | | |
|-----------------------|-----------------------|----------------------|----------------------|
| RIGHT SIDE OF PATTERN | WRONG SIDE OF PATTERN | RIGHT SIDE OF FABRIC | WRONG SIDE OF FABRIC |
|-----------------------|-----------------------|----------------------|----------------------|

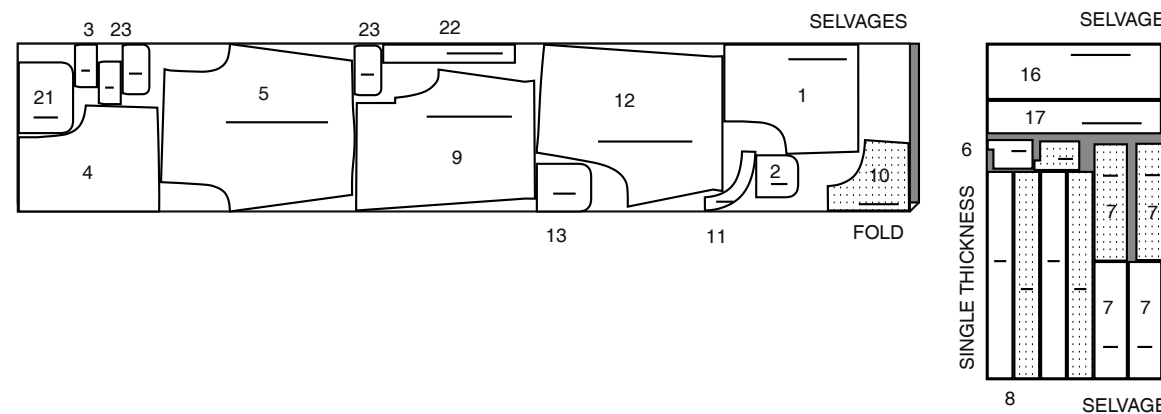
JUMPSUIT A

PIECES 1 2 3 4 5 6 7 8 9 10 11 12 13 16 17 21 22 23

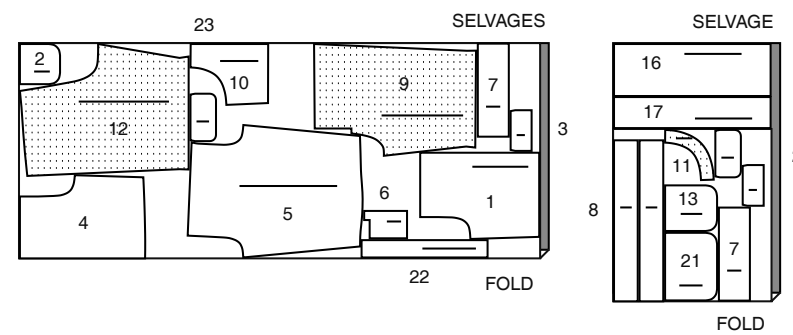
45" (115CM) WITH NAP SIZES 8 10 12



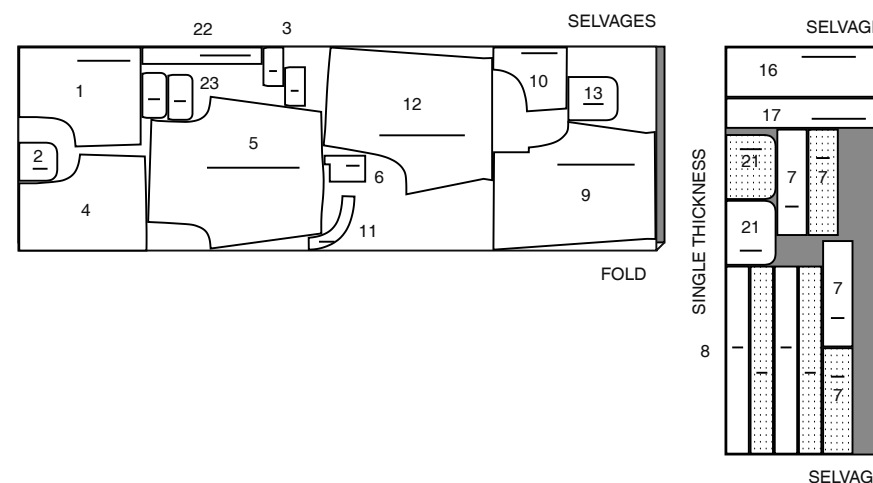
45" (115CM) WITH NAP SIZES 14 16 18 20 22 24 26



60" (150CM) WITH NAP SIZES 8 10 12 14 16



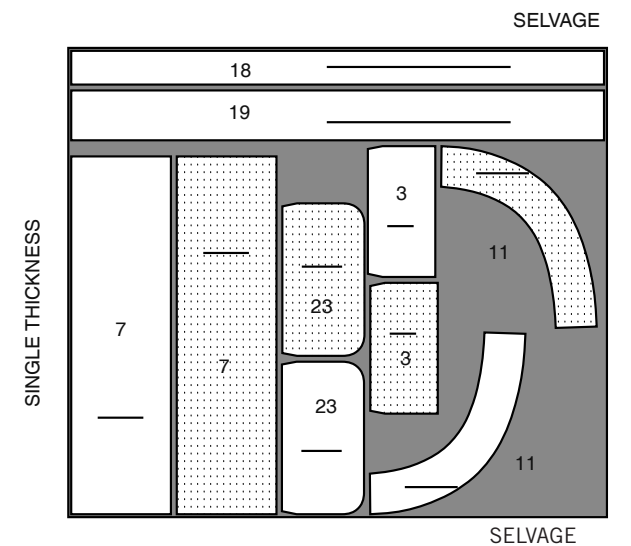
60" (150CM) WITH NAP SIZES 18 20 22 24 26



INTERFACING

PIECES 3 7 11 18 19 23

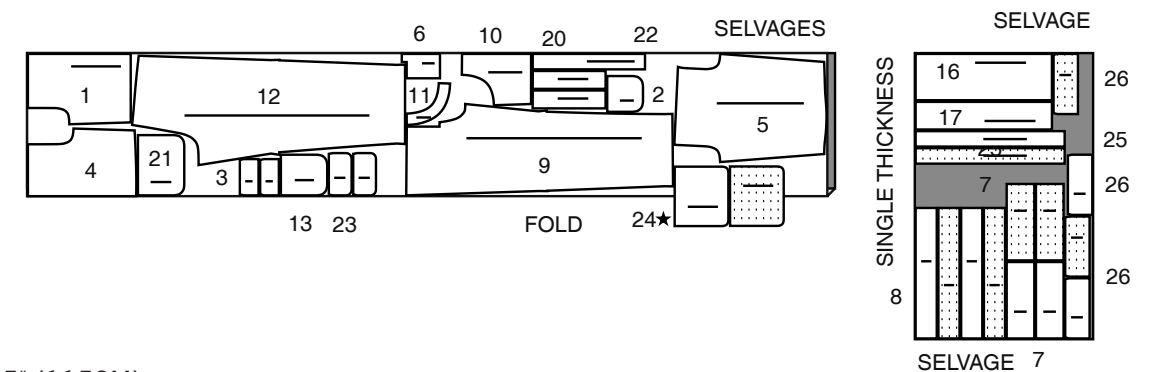
20" (51CM) ALL SIZES



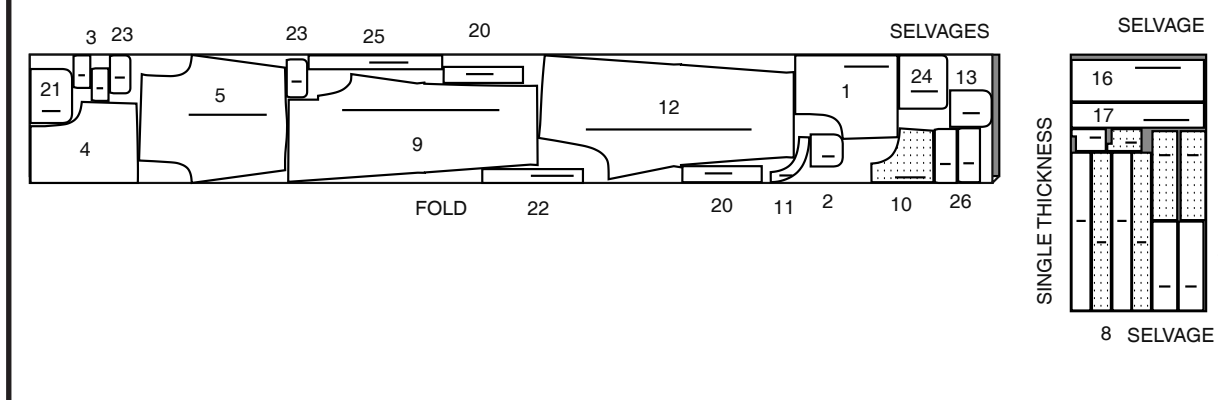
JUMPSUIT B

PIECES 1 2 3 4 5 6 7 8 9 10 11 12 13 16 17 20 21 22 23 24 25 26

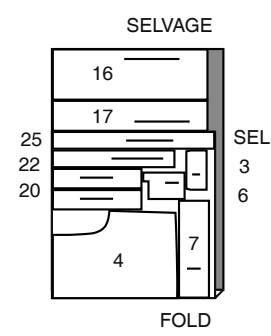
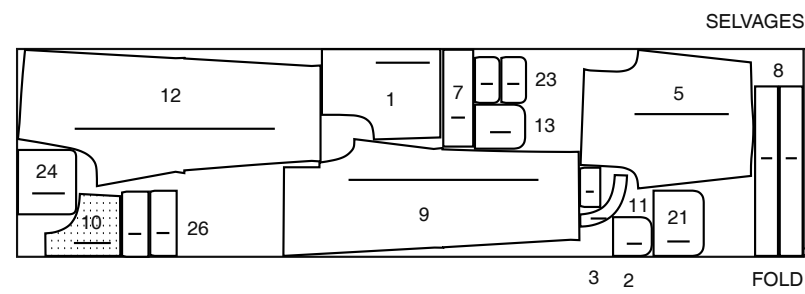
45" (115CM) WITH NAP SIZES 8 10 12



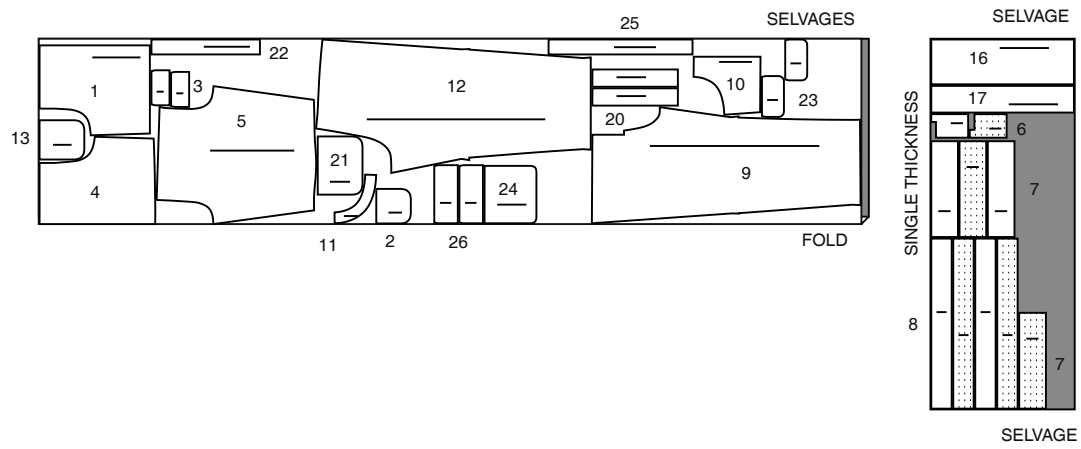
45" (115CM) WITH NAP SIZES 14 16 18 20 22 24 26



60" (150CM)
WITH NAP
SIZES 8 10 12 14 16 18 20

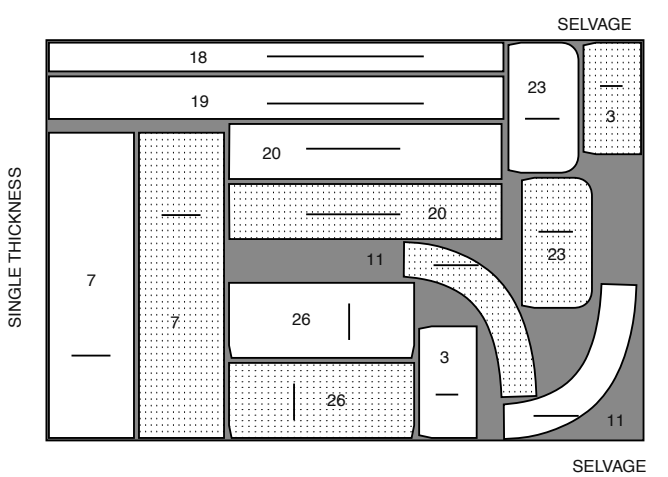


60" (150CM)
WITH NAP
SIZES 22 24 26

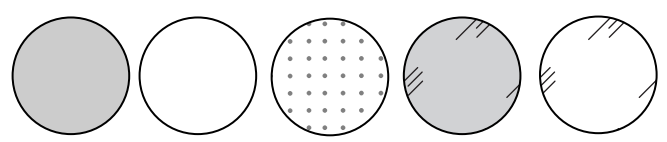


INTERFACING
PIECES 3 7 11 18 19 20 23 26

20" (51CM)
ALL SIZES



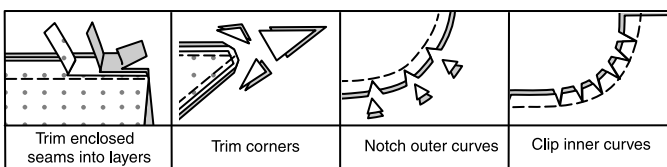
SEWING INFORMATION
FABRIC KEY



| | | | | |
|-------------------|-------------------|-------------|-------------------|-------------------|
| Right Side Fabric | Wrong Side Fabric | Interfacing | Right Side Lining | Wrong Side Lining |
|-------------------|-------------------|-------------|-------------------|-------------------|

SEAM ALLOWANCES

Use 5/8" (1.5cm) seam allowances unless otherwise indicated.



PIN AND FIT

Pin or baste seams, **RIGHT SIDE TOGETHER**, matching notches. Fit garment before stitching major seams.

PRESS

Press seam allowances flat; then open unless otherwise stated. Clip where necessary so they lie flat.

GLOSSARY

GLOSSARY OF SEWING METHODS

Sewing methods shown in **BOLD** are defined below:

GATHER – Loosen needle tension slightly. On **OUTSIDE**, stitch 5/8" (1.5cm) from cut edge using a long stitch. Stitch again 1/4" (6mm) from the first stitching within the seam allowance.

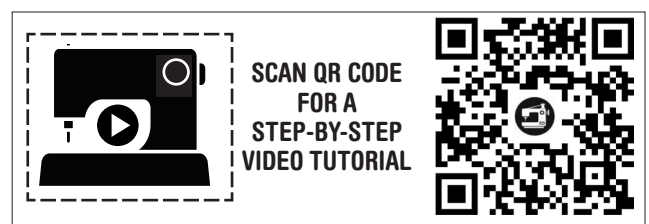
EDGE FINISH – Stitch 1/4" (6mm) from edge, turn under edge along stitching and stitch or zigzag, or overlock/serge raw edges.

EASESTITCH - Stitch along seamline, using long machine stitches. Pull thread ends when adjusting to fit. **NOTE:** For sleeve caps, make a second row of long machine stitches 1/4" (6mm) away in seam allowance. for more control.

SLIPSTITCH - Slide needle through a folded edge, then pick up a thread of underneath fabric.

STITCH IN THE DITCH – On the **OUTSIDE** of the garment, stitch in the groove formed by the seam. Be sure to catch all the underneath layers in the stitching.

TOPSTITCH - On outside, stitch 1/4" (6mm) from edge, seam or previous stitching.



@thecornyrainbow

PATTERN PIECES WILL BE IDENTIFIED BY NUMBERS THE FIRST TIME THEY ARE USED.

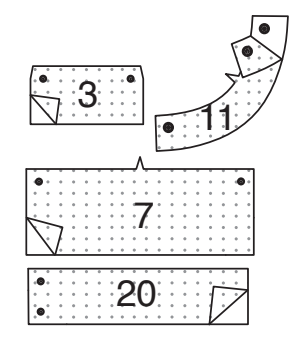
STITCH 5/8" (1.5CM) SEAMS WITH RIGHT SIDES TOGETHER UNLESS OTHERWISE STATED.

JUMPSUIT A, B

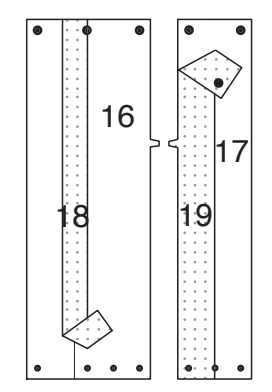
NOTE: This jumpsuit is designed with two sets of optional pockets which can be added to garment and placed as you desire.

INTERFACING

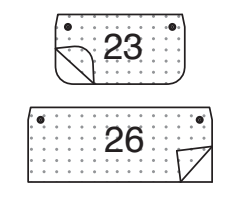
1. Pin interfacing to **WRONG** side of **UPPER FLAP (3)**, **CUFF (7)**, **POCKET FACING (11)**, and **TAB (20)**. Fuse interfacing in place following manufacturer's directions.



2. Pin **RIGHT INTERFACING (18)** to **WRONG** side of **RIGHT BAND (16)** centered over center front marking, and pin **LEFT INTERFACING (19)** to **WRONG** side of **LEFT BAND (17)** with raw edges even, matching notches. Fuse interfacing in place following manufacturer's directions.

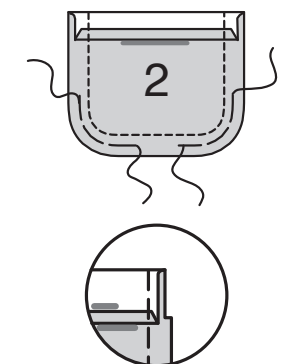


3. FOR OPTIONAL POCKETS – (Small Pocket) Pin interfacing to **WRONG** side of **LOWER FLAP (23)**. (Large Pocket) Pin interfacing to **WRONG** side of **LOWER FLAP (26)**. Fuse interfacing in place following manufacturer's directions.

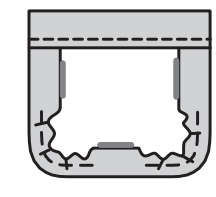


BODICE

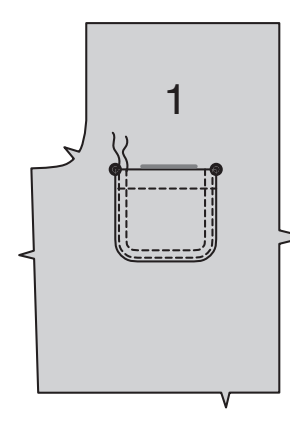
4. Press under 1/4" (6mm) on upper edge of **UPPER POCKET (2)**. Turn upper edge to **OUTSIDE** along fold line, forming facing. Stitch along seam line on raw edges. To ease curved edge of pocket, stitch 1/4" (6mm) **INSIDE** the seam line, using a long machine-stitch. Trim seam allowance in the facing area to 1/4" (6mm).



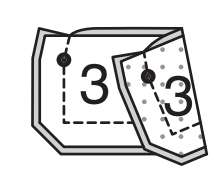
5. Turn corners **RIGHT** side out, turning facing to the **WRONG** side; press, pressing under raw edges along stitching. Pull up ease stitches to shape the curve. To eliminate bulk, notch out the fullness in the seam allowance along the curves as far as the ease stitches. Stitch facing close to inner edge.



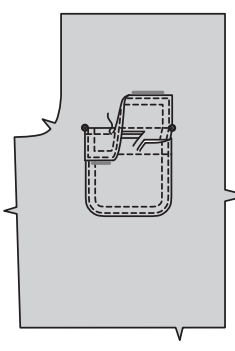
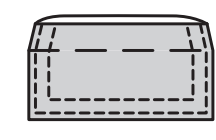
6. On **OUTSIDE**, pin upper pocket to **BODICE FRONT (1)**, matching large dots. Stitch close to side and lower edges and 1/4" (6mm) away.



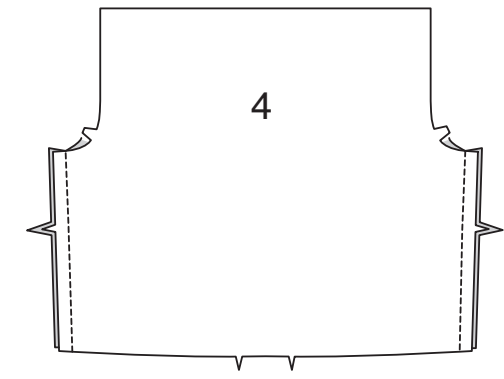
7. With **RIGHT** sides together, stitch facing to **UPPER FLAP (3)**, leaving edge with small dots open. Trim seam and corners.



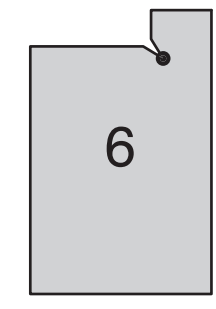
8. Turn flap; press. Machine-baste 5/8" (1.5cm) from raw edge. On **OUTSIDE**, stitch close to finished edge and 1/4" (6mm) away. On **OUTSIDE**, pin upper flap to bodice front, placing basting along flap line, matching small dots, as shown. Stitch along basting. Turn flap down; press. **TOPSTITCH** 1/4" (6mm) from upper edge.



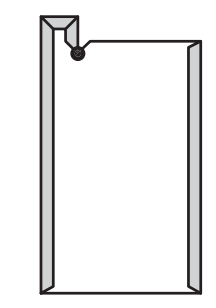
9. Pin bodice front to **BODICE BACK (4)** at side edges. Stitch.



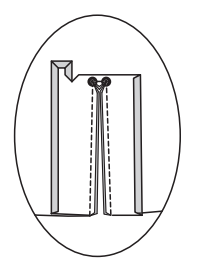
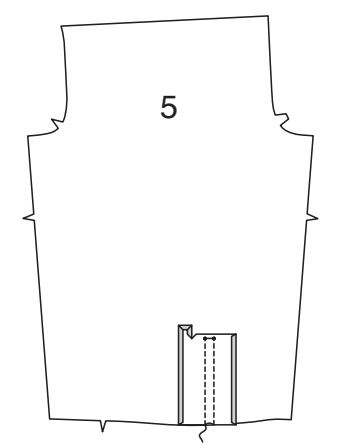
10. Clip inner corner of **PLACKET (6)** to small dot, as shown.



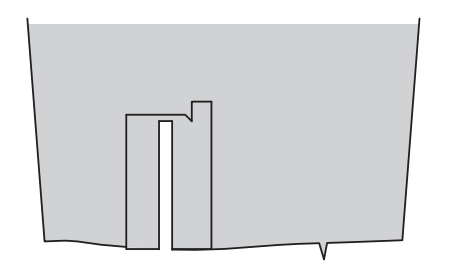
11. Press under 1/4" (6mm) on side edges and upper end of placket, folding in fullness at corners.



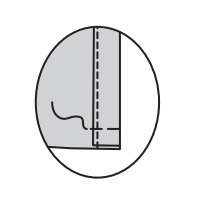
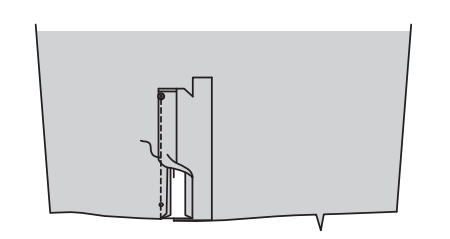
12. Pin **RIGHT** side of the placket to **WRONG** side of **SLEEVE (5)**, matching stitching lines. Stitch along stitching lines, pivoting at small dots. Slash between stitching, clipping diagonally to small dots.



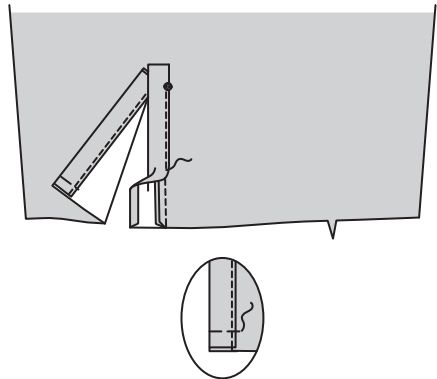
13. Turn placket to **OUTSIDE**. Press seams toward placket and triangular end up.



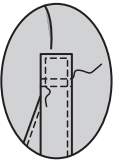
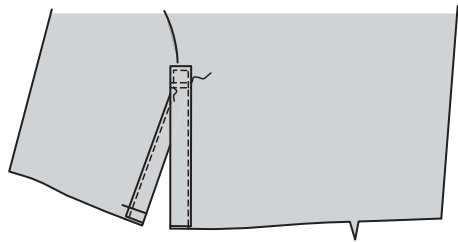
14. Fold shorter side of placket along foldline, placing pressed edge over seam. Stitch close to edge, from small dot to lower edge. Baste across lower edge.



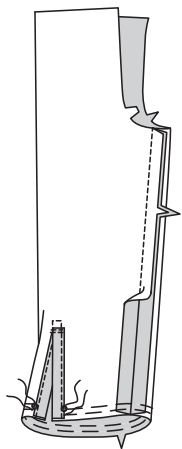
15. Fold remaining side of placket along foldline, placing pressed edge over seam. Stitch close to edge, from small dot to lower edge. Baste across lower edge.



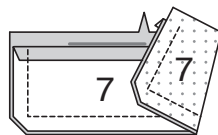
16. Pin upper edge of placket to sleeve along placement line. Stitch close to edges. Stitch along stitching line and again 1/4" (6mm) above stitching, as shown.



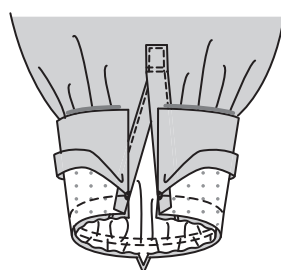
17. **GATHER** lower edge of sleeve between small dots. Stitch underarm edges together.



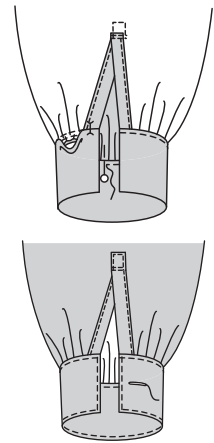
18. Press under 5/8" (1.5cm) on notched edge of CUFF (7) facing; trim to 1/4" (6mm). With RIGHT sides together, stitch facing to cuff, leaving notched edge open. Trim seam and corners.



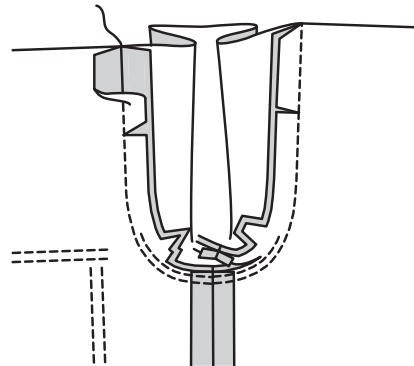
19. Turn cuff; press. With RIGHT sides together, pin sleeve to cuff, placing opening edges at small dots, pulling up gathering stitches to fit. Stitch. Trim seam; press seam toward cuff, pressing cuff out.



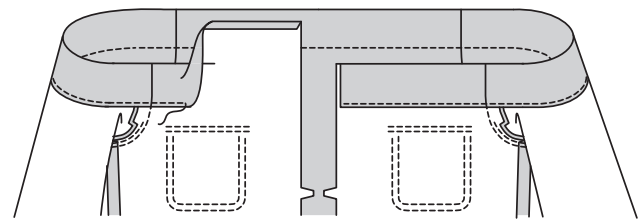
20. On INSIDE, pin pressed edge of cuff facing over seam, placing pins on OUTSIDE. On OUTSIDE, stitch cuff close to seam, catching in pressed edge of cuff facing on the INSIDE. On OUTSIDE, **EDGESTITCH** close to lower edge and ends of cuff. Make buttonhole at marking.



21. Turn sleeve RIGHT side out. Hold bodice WRONG side out with armhole toward you. With RIGHT sides together, pin sleeve to armhole edge, matching underarm seams and notches. Trim seam below notches close to stitching. Press only the seam allowance, shrinking out fullness. Press seam toward sleeve. Clip seam allowance of bodice front and bodice back to stitching at foldline. Press seam open above clips.

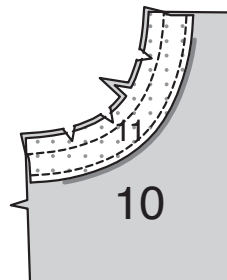


22. To make neck casing for elastic, press under a scant 3/8" (1cm) on upper edge of bodice. Turn pressed edge to INSIDE along foldline; press. Stitch in place close to inner pressed edge.

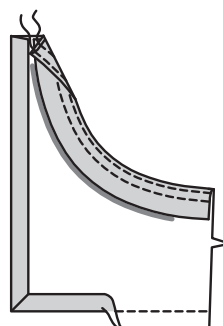


PANTS

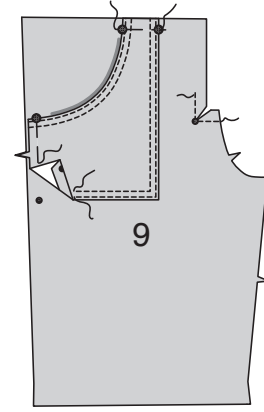
23. **EDGE FINISH** lower edge of POCKET FACING (11). With RIGHT sides together and raw edges even, pin pocket facing to LOWER POCKET (10) along notched edge. Stitch. Trim seam.



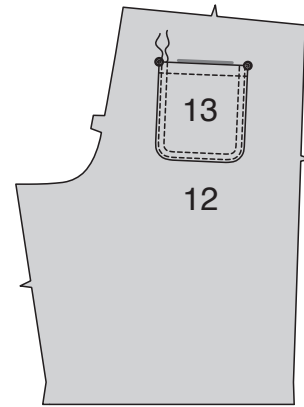
24. Turn facing to INSIDE; press. Baste raw edges together. **EDGESTITCH** close to finished edge and **TOPSTITCH** 1/4" (6mm) from first stitching. Stitch along front and lower edges of pocket. Press under front and lower edges of pocket along stitching, folding in fullness at corners.



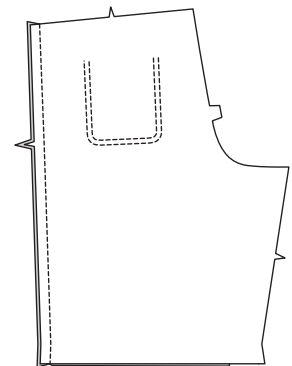
25. On OUTSIDE, pin lower pocket to PANTS FRONT (9), matching small and large dots. Baste side and upper edges. **EDGESTITCH** lower pocket close to finished edge and **TOPSTITCH** 1/4" (6mm) from first stitching. To reinforce front edges of pants front, stitch along stitching lines. Clip to stitching at small dot.



26. Make BACK POCKET (13) in the same manner as upper pocket on bodice front. On OUTSIDE, pin back pocket to PANTS BACK (12), matching large dots. Stitch close to side and lower edges and 1/4" (6mm) away.



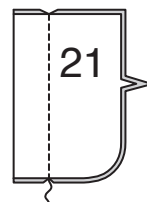
27. Stitch pants front to pants back at side edges.



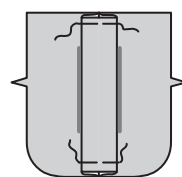
OPTIONAL POCKETS AND LOOP

NOTE: Steps below are given for optional small, gusseted pocket and flap. Make large, gusseted pocket and flap in the same manner, eliminating the box pleat and loop, using LOWER POCKET (24), GUSSET (25), and LOWER FLAP (26) sections.

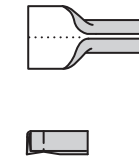
28. To make a box pleat on LOWER POCKET (21), on INSIDE, bring broken lines together. Stitch along broken lines.



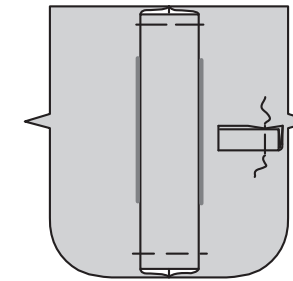
29. Press pleat flat, bringing stitching to center. Baste along upper and lower edges.



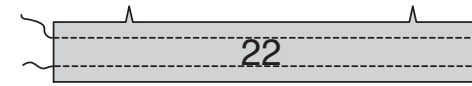
30. To make loop, cut a piece of remnant 1-3/4" (4.5cm) wide by 3-1/4" (8.3cm) long. Turn under raw edges of loop a generous 3/8" (1cm), bringing raw edges to center of width. Press. Fold tag in half, lengthwise; press. Baste raw edges together. If you prefer, make loop from twill tape remnant.



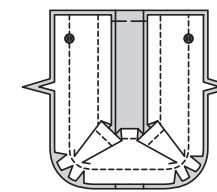
31. On OUTSIDE, pin tag to front edge of one pocket. Baste along seamline.



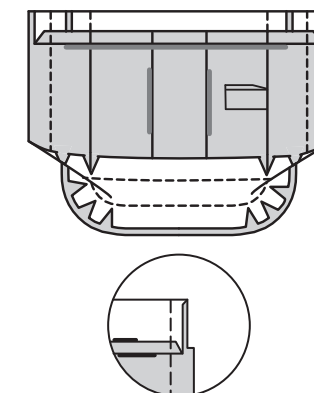
32. Machine-stitch a generous 1/2" (1.3cm) away from long edges of GUSSET (22).



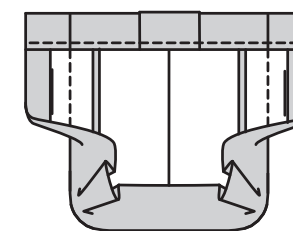
33. With RIGHT side together and raw edges even, pin gusset to pocket, matching large dots and notches, clipping seam allowance of gusset to stitching to make the curve.



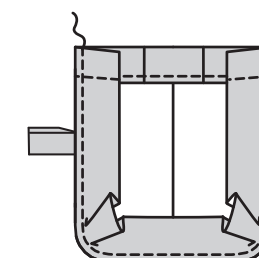
34. Press under 1/4" (6mm) on upper edge of pocket and gusset. Turn upper edge to OUTSIDE, along foldline, forming facing. Stitch along seamline on raw edges. Clip seam allowance to stitching along curves. Trim seam allowance in the facing area to 1/4" (6mm).



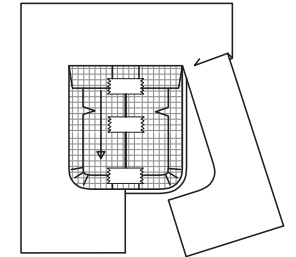
35. Turn corners RIGHT side out, turning facing to the WRONG side; press, pressing under raw edges along stitching. Stitch facing close to inner edge.



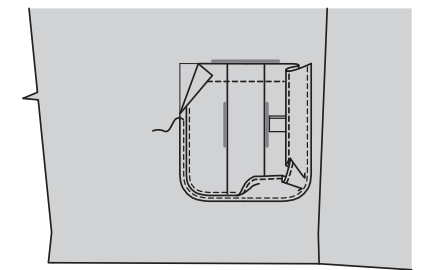
36. On OUTSIDE, **EDGESTITCH** pocket close to seam through all thicknesses.



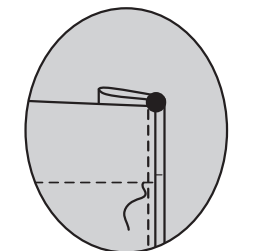
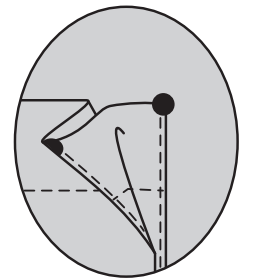
37. Fold lower pocket pattern tissue along stitching lines and tape. Tape pattern to a piece of lightweight cardboard. Transfer finished shape (seamline) of pocket to cardboard. Cut pocket out. Using cardboard shape as a guide, decide where to place the pocket to your pants. On OUTSIDE, transfer shape to fabric using a washable fabric pen.



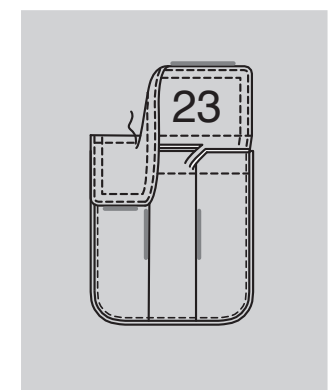
38. On OUTSIDE, pin remaining long edge of pocket gusset to pants along pocket marking. **EDGESTITCH** close to side and lower edges.



39. Fold gusset through center, bringing large dots together. Press. **EDGESTITCH** side edges from upper edge of pocket to facing stitching through all thicknesses, over previous stitching.



40. Make LOWER FLAP (23) in the same manner as upper flap on bodice front. On OUTSIDE, pin flap to pants, centered with pocket, placing basting 1/2" (1.3cm) above upper pocket edge, as shown. Stitch along basting. Trim close to stitching. Turn flap down; press. **TOPSTITCH** 1/4" (6mm) from finished edge.

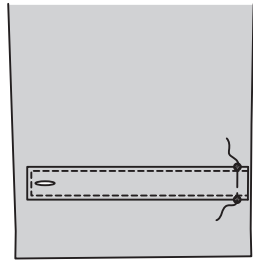


PANTS INNER LEG AND CENTER SEAMS

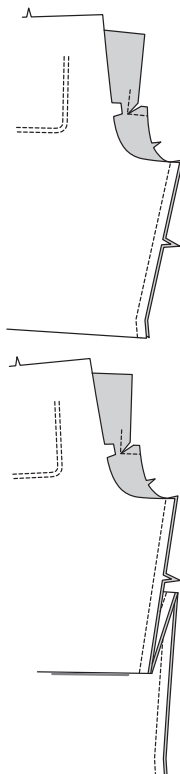
41. FOR VIEW B – With RIGHT sides together and raw edges even, pin TAB (20) to tab facing. Stitch, leaving end with small dots open. Trim seam and corners.



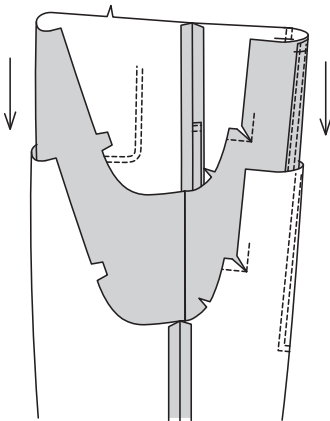
42. Turn tab; press. Baste raw edges together. **EDGESTITCH** close to finished edge. Make buttonhole at marking. On **OUTSIDE**, pin tab to inner leg edge of front, matching small dots; baste.



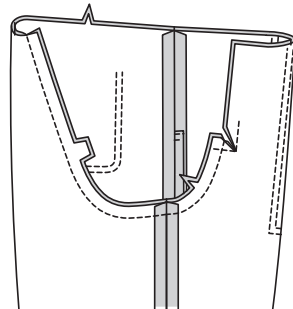
43. FOR BOTH VIEWS – With RIGHT sides together and raw edges even, pin pants front to pants back along inner leg edges. Stitch.



44. With RIGHT sides together, insert one leg **INSIDE** the other.

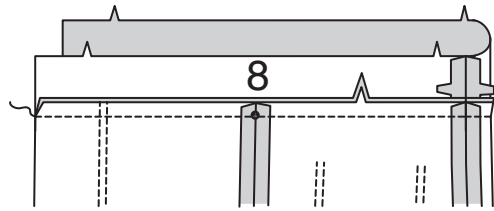


45. With RIGHT sides together, pin center seam, matching inner leg seams and notches. Stitch. To reinforce seam, stitch again over first stitching.

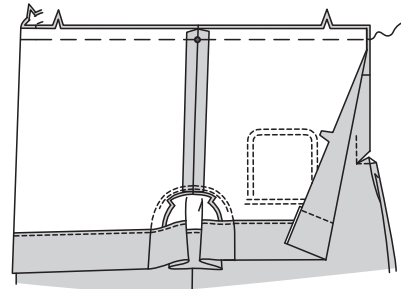


WAISTBAND CASING

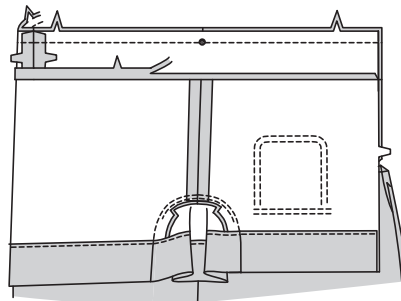
46. Stitch center back edges of **CASING** (8). With RIGHT sides together and raw edges even, pin lower edge of casing to upper edge of pants, matching notches, placing small dots at side seams. Stitch. Trim seam. Press seam toward casing, pressing casing out.



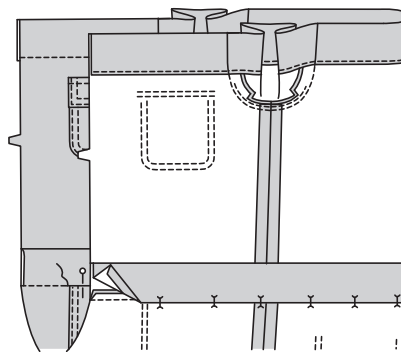
47. With RIGHT sides together and raw edges even, pin lower edge of bodice to upper edge of casing, matching notches, placing small dots at side seams. Baste.



48. Stitch center back edges of casing facing. Press under a generous 1/2" (1.3cm) on lower edge. Trim to 1/4" (6mm). With RIGHT sides together and raw edges even, pin facing to casing (over **WRONG** side of bodice), matching small dots and notches. Stitch through all thicknesses.

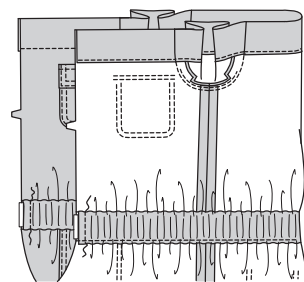
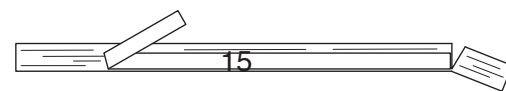


49. Turn facing to **INSIDE**; press, pressing out the bodice. On **INSIDE**, pin pressed edge of facing over seam, placing pins on **OUTSIDE**. On **OUTSIDE**, stitch in the ditch of the seam, catching in pressed edge of facing on the **INSIDE**.



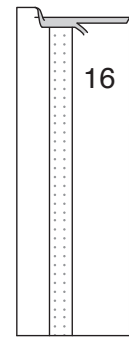
50. Cut a piece of elastic the length of **ELASTIC GUIDE FOR WAIST** (15). Attach a safety pin to one end of elastic and thread elastic through opening at one end of casing. Stitch across ends of elastic along front edges, securely. Distribute fullness of garment evenly.

Cut a piece of elastic the length of **ELASTIC GUIDE FOR NECK** (14), thread through neckline casing, and stitch ends along front edges in the same manner.

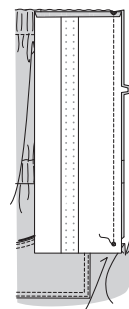


FRONT PLACKET

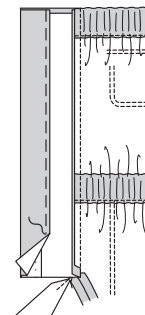
51. Press under a generous 5/8" (1.5cm) on upper edge of **RIGHT BAND** (16). Trim to 1/4" (6mm).



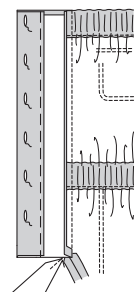
52. With RIGHT sides together, pin right band to right front, matching large dots, small dots, and notches. Stitch from upper edge to small dot. Trim. Press seam toward band.



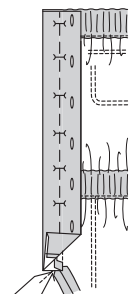
53. Turn front band to **INSIDE** along outer foldline. Baste close to edge, as shown.



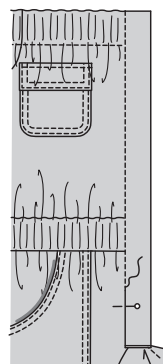
54. Make buttonholes at markings.



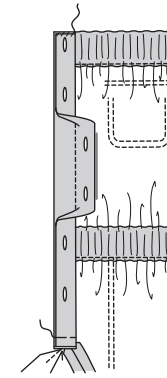
55. Turn front band to **INSIDE** along remaining outer foldline, as shown. Pin, placing pins on **OUTSIDE**.



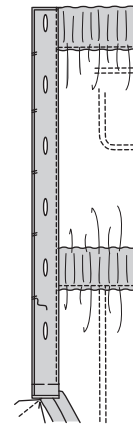
56. On **OUTSIDE**, stitch in the ditch of the seam through all thicknesses. Remove basting.



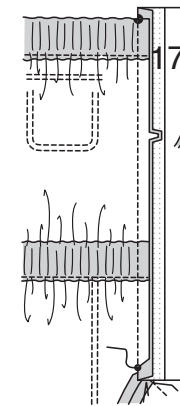
57. Fold inner edge of band to **OUTSIDE** along stitching, as shown. **SLIPSTITCH** upper edges of band together, invisibly. Baste across lower edge of band.



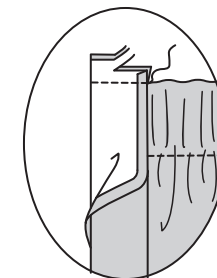
58. Hand-tack double edges of band together in between each buttonhole, as shown.



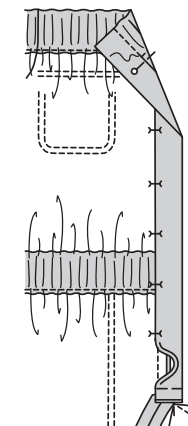
59. Press under a generous 1/2" (1.3cm) on long, unnotched edge of **LEFT BAND** (17). Trim to 1/4" (6mm). With RIGHT sides together and raw edges even, pin left band to **LEFT** front edge of jumpsuit, matching small dots, large dots, and notches. Stitch. Press band out, pressing seam toward band.



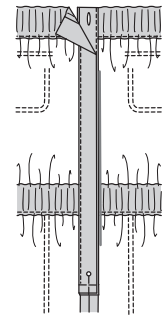
60. Turn upper edge of band to **OUTSIDE** along foldline. Stitch. Trim seam in layers.



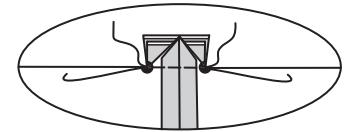
61. Turn band facing to **INSIDE**; press, pressing out corner. On **INSIDE**, pin pressed edge of band facing over seam, placing pins on **OUTSIDE**. On **OUTSIDE**, stitch in the ditch of the seam catching in pressed edge of band facing on the **INSIDE**. Baste lower edges together.



62. Slip lower ends of bands to **INSIDE** of jumpsuit. On **INSIDE**, lap left band over right band, matching centers. Pin.

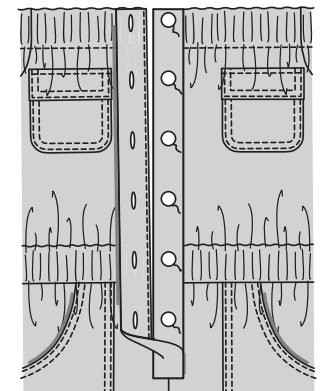


63. On **INSIDE**, fold lower portion of jumpsuit up to expose the triangular flap at the bottom of the opening. Baste bands and flap together along stitching line between the small dots. Stitch as basted, keeping jumpsuit free.

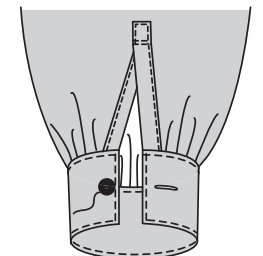


FINISHING

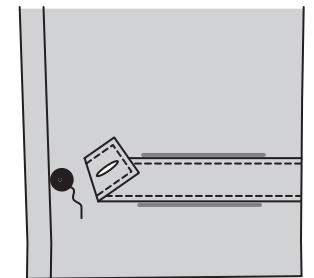
64. Sew buttons to **OUTSIDE** of left band at small dots.



65. Sew buttons to cuff at small dots.



66. FOR VIEW B – Sew button to pants front and pants back under tab at small dot.



67. FOR BOTH VIEWS – Press 1-1/4" (3.2cm) hem allowance. Turn under raw edge 1/4" (6mm); press. Stitch hem in place close to inner pressed edge.

