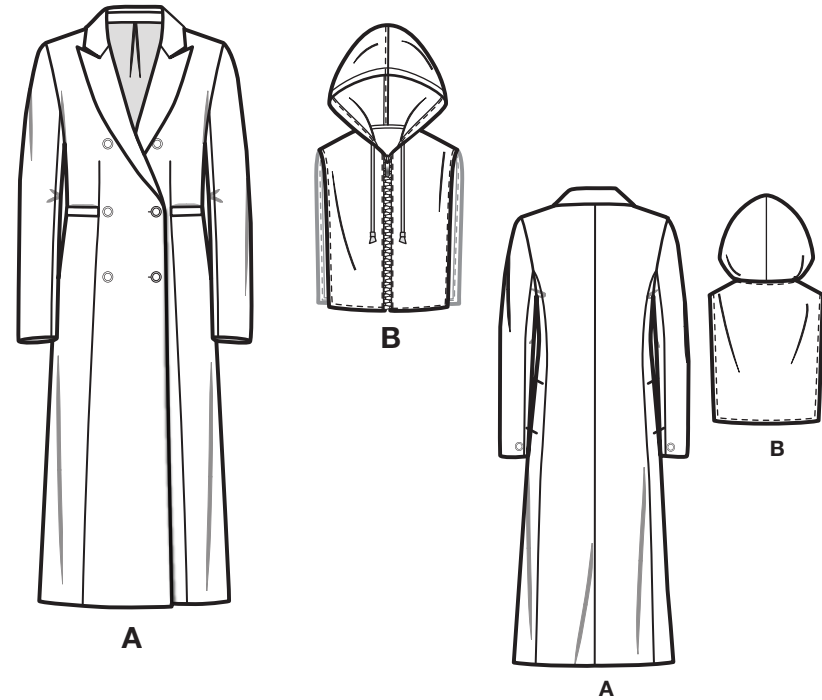


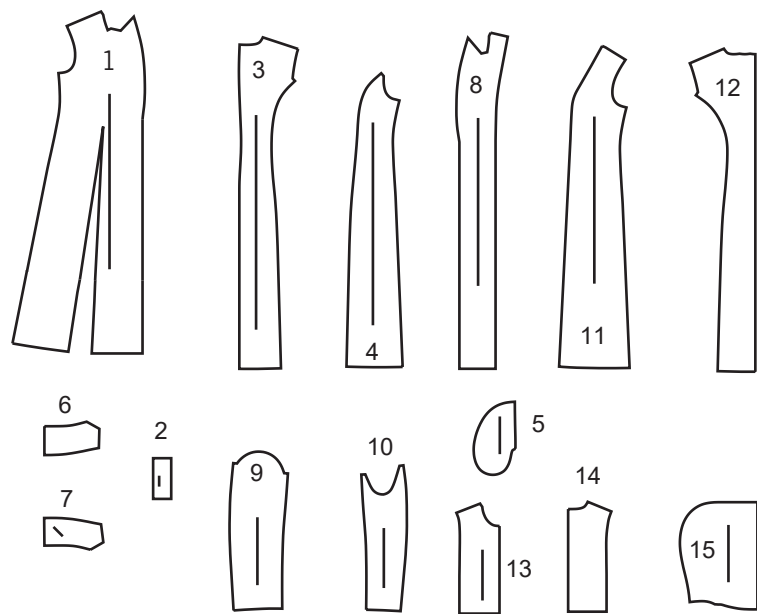
SCAN QR CODE FOR A STEP-BY-STEP VIDEO TUTORIAL



@thestitchfz

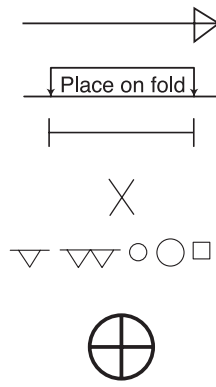


15 PATTERN PIECES



- 1 FRONT - A
- 2 WELT - A
- 3 BACK - A
- 4 SIDE BACK - A
- 5 POCKET - A
- 6 UPPER COLLAR - A
- 7 UNDER COLLAR - A
- 8 FRONT FACING - A
- 9 UPPER SLEEVE - A
- 10 UNDER SLEEVE - A
- 11 FRONT LINING - A
- 12 BACK LINING - A
- 13 FRONT - B
- 14 BACK - B
- 15 HOOD - B

PATTERN MARKINGS



GRAINLINE: Place on straight grain of fabric, parallel to selvage or fold.

FOLDLINE: Place line on fold of fabric.

BUTTONHOLE MARKING: Indicates exact length and placement of buttonholes.

BUTTON MARKING: Indicates button placement.

NOTCHES AND SYMBOLS: For matching seams and construction details.

Indicates the Bustline, Waistline, Hip and/or Biceps. Measurements refer to circumference of Finished Garment (Body Measurement + Wearing Ease + Design Ease). Adjust pattern if necessary. The measurement excludes pleats, tucks, darts and seam allowances.

SEAM ALLOWANCE: 5/8" (1.5cm) included unless otherwise indicated, but not printed on tissue.

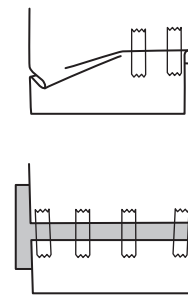
ADJUST IF NECESSARY

Lengthen or Shorten at adjustment lines (==) or where indicated on pattern. If substantial length is added, you may need to purchase additional fabric.

TO SHORTEN: Crease along adjustment line. Make a fold half the amount needed. Tape in place.

TO LENGTHEN: Slash between adjustment lines. Spread amount as needed, keeping edges parallel. Tape over paper.

When Alteration lines are not on tissue, lengthen or shorten at lower edge.



CUTTING AND MARKING

SHRINK FABRIC if not labeled pre-shrunk. Press.

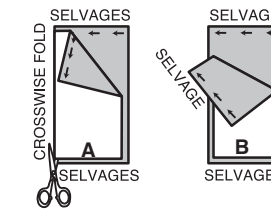
CIRCLE LAYOUT for View, Size, Fabric Width.

Use **WITH NAP** layout for fabrics with one-way designs, nap, pile or surface shading. Because most knits have surface shading, a with nap layout is used.

For **DOUBLE THICKNESS (WITH FOLD)** - fold fabric with right sides together.

*** DOUBLE THICKNESS (WITHOUT FOLD)** - For fabrics with nap, fold fabric crosswise, right sides together. Mark as shown. Cut along crosswise fold of fabric (A). Turn upper layer 180° so arrows go in same direction and place over lower layer, right sides together (B).

For **SINGLE THICKNESS** - place fabric right side up. (For Fur Pile fabrics, place pile side down.)



★ Cut other pieces first, allowing enough fabric to cut this piece. Open fabric. For "Cut 1" pieces, cut piece once on single layer of fabric with piece face up on right side of fabric.

Pattern may have cutting lines for several sizes. Select the proper cutting line or pattern pieces for your size.

Before **CUTTING** place all pieces on fabric according to layout. Pin. (**Layouts show approximate position of pattern pieces; position may vary according to your pattern size.**) Cut **ACCURATELY**, cutting notches outward.

Before removing pattern, **TRANSFER MARKINGS** and lines of construction to Wrong Side of fabric, using the Pin and Chalk Pencil method or Tracing Paper and Dressmaker Wheel. Markings needed on right side of fabric should be thread traced.

NOTE: Broken-line boxes (a! b! c!) in layouts represent pieces cut by measurements provided.

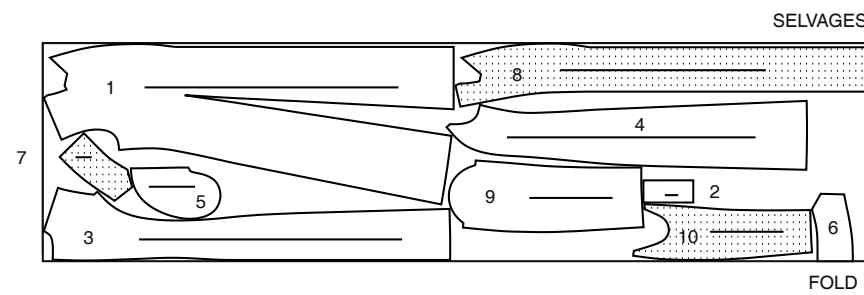
CUTTING LAYOUTS

RIGHT SIDE OF PATTERN	WRONG SIDE OF PATTERN	RIGHT SIDE OF FABRIC	WRONG SIDE OF FABRIC

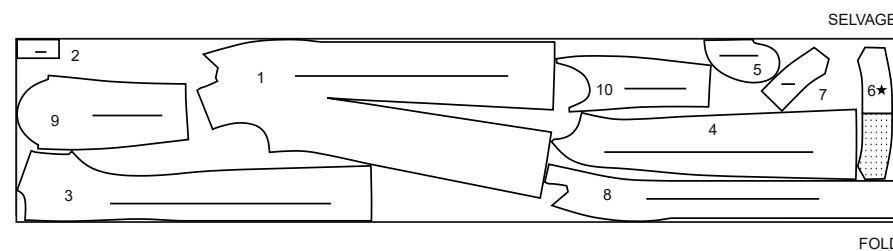
COAT A

USE PIECES: 1 2 3 4 5 6 7 8 9 10

60" (150CM) WITH NAP
SIZES 8 10



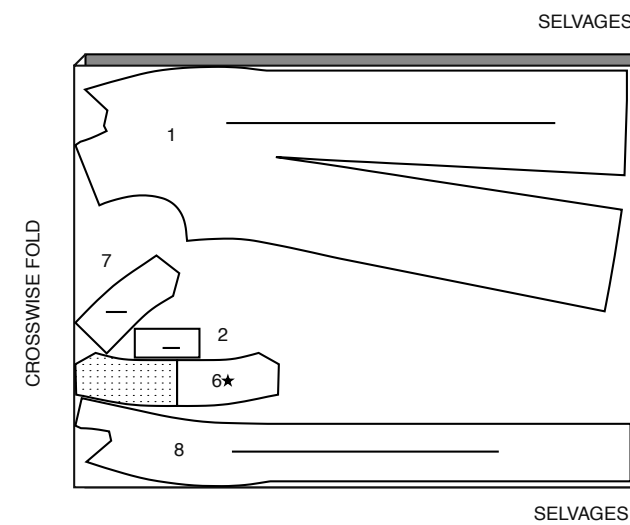
60" (150CM) WITH NAP
SIZES 12 14 16 18 20 22 24 26
CUT ONE OF PIECE 6



INTERFACING

USE PIECES: 1 2 6 7 8

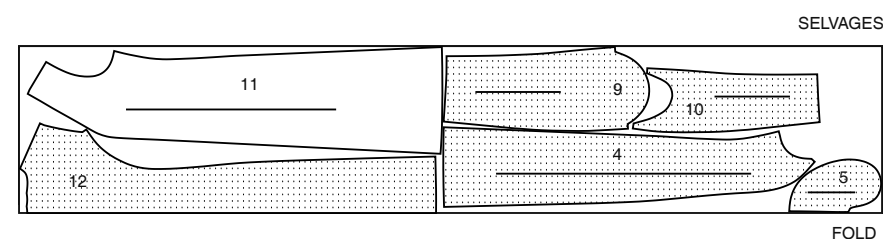
45" (115CM)
ALL SIZES



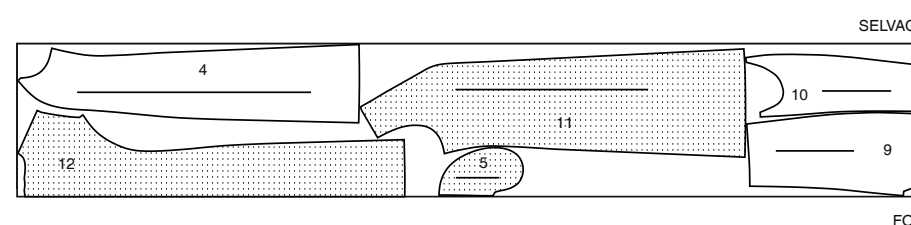
LINING

USE PIECES: 4 5 9 10 11 12

45" (115CM) WITHOUT NAP
SIZES 8 10 12 14 16 18 20



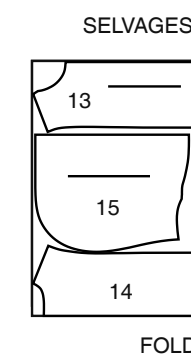
45" (115CM) WITHOUT NAP
SIZES 22 24 26



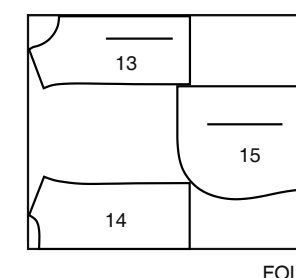
HOOD B

USE PIECES: 13 14 15

60" (150CM) WITH NAP
SIZES 8 10 12 14 16 18

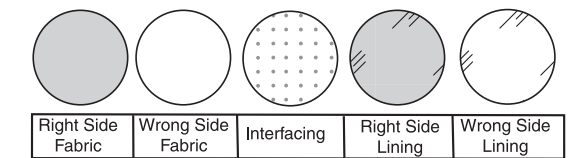


60" (150CM) WITH NAP
SIZES 20 22 24 26



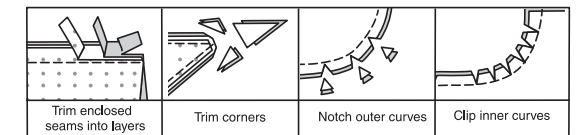
SEWING INFORMATION

FABRIC KEY



SEAM ALLOWANCES

Use 5/8" (1.5cm) seam allowances unless otherwise indicated.



PIN AND FIT

Pin or baste seams, **RIGHT SIDE TOGETHER**, matching notches. Fit garment before stitching major seams.

PRESS

Press seam allowances flat; then open unless otherwise stated. Clip where necessary so they lie flat.

GLOSSARY

Sewing methods in **BOLD TYPE** have Sewing Tutorial Video available. Scan **QR CODE** to watch videos:

DARTS- To make darts, with **RIGHT** sides together, bring broken lines together, matching small dots. Stitch along broken line from wide end to point.

EASESTITCH - Stitch along seamline, using long machine stitches. Pull thread ends when adjusting to fit.

NOTE: For sleeve caps, make a second row of long machine stitches 1/4" (6mm) away in seam allowance. for more control.

EDGESTITCH - Stitch close to finished edge or seam.

FINISH - Stitch 1/4" (6mm) from raw edge and finish with one of the following: (1) Pink OR (2) Overcast OR (3) Turn in along stitching and stitch close to fold OR (4) Overlock.

OPTIONAL FOR HEMS: Apply Seam Binding.

NARROW HEM - Turn in hem; press, easing in fullness if necessary. Open out hem. Turn in again so raw edge is along crease; press. Turn in along crease; stitch.

REINFORCE - Stitch along seamline where indicated in sewing instructions, using small machine stitches.

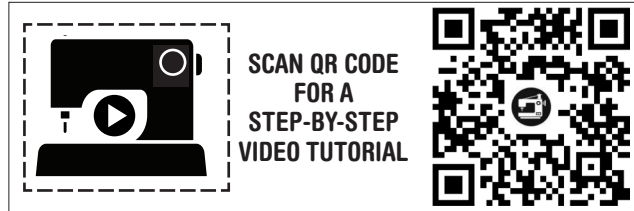
SLIPSTITCH - Slide needle through a folded edge, then pick up a thread of underneath fabric.

STAYSTITCH - Stitch 1/2" (1.3cm) from raw edge within seam allowance.

TOPSTITCH - On outside, stitch 1/4" (6mm) from edge, seam or previous stitching, using presser foot as guide, or stitch where indicated in instructions.

PATTERN PIECES WILL BE IDENTIFIED BY NUMBERS THE FIRST TIME THEY ARE USED.

STITCH 5/8" (1.5CM) SEAMS WITH RIGHT SIDES TOGETHER UNLESS OTHERWISE STATED.



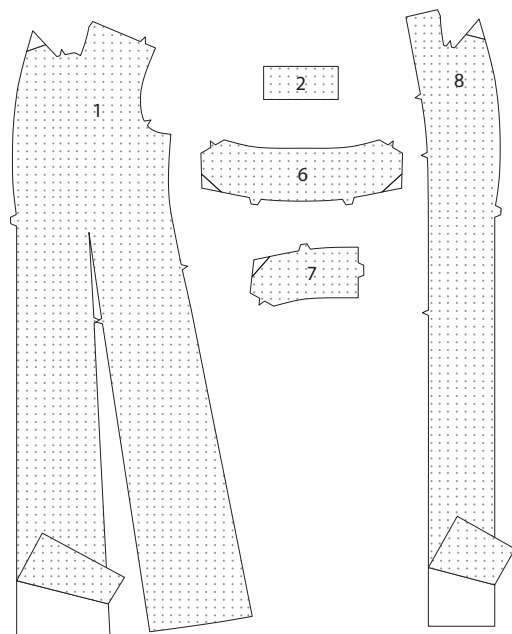
@thestitchfitz

SEWING DIRECTIONS

COAT A

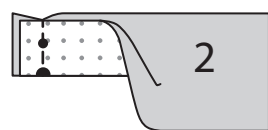
INTERFACING

1. Trim corners from INTERFACING, as shown. Fuse interfacing to wrong side of each matching fabric section, following manufacturer's instructions.



FRONT AND BACK

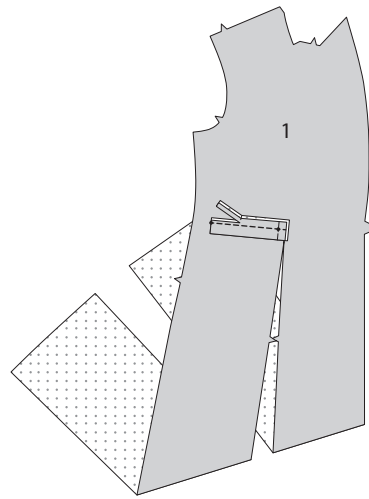
2. Fold WELT (2) sections in half lengthwise, with RIGHT sides together. Stitch one short end with small and large dots.



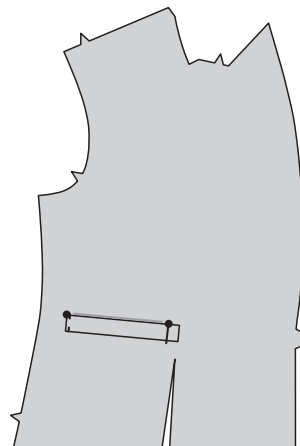
3. Turn welt RIGHT side out. Press. Baste raw edges together along seam line.



4. On OUTSIDE, pin welts to each side of FRONT (1) matching small dots, placing seam line along welt line, having raw edge facing up. Stitch along seam line. Trim welt seam allowance to a scant 1/4" (6mm) being careful not to cut front.

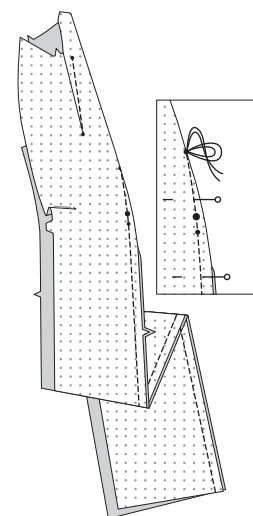


5. Press welts up over seam, matching large dots. **EDGESTITCH** finished edge of welt in place. Baste raw edge of welt along dart seam.

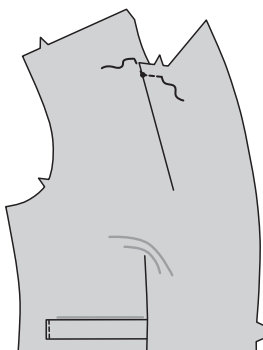


6. To form **DART** seam in front, on INSIDE, bring broken lines together, matching small and large dots. Stitch along broken line from raw edge to point. Press dart seam toward front.

To make **DARTS** in upper edge of front, with RIGHT sides together, bring broken lines together, matching small dots. Stitch along broken line from wide end to point. Press dart seam toward front.

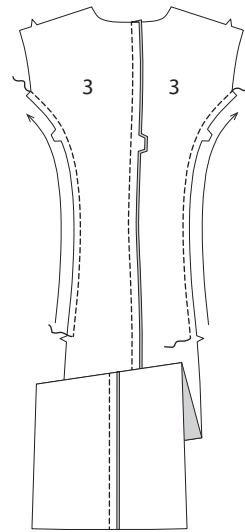


7. **REINFORCE** neck edge of front, pivoting with needle in fabric at small dot.

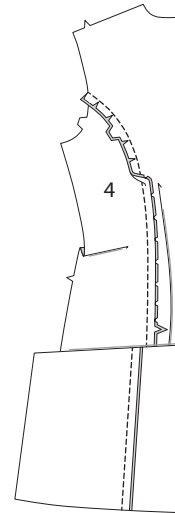


8. **STAYSTITCH** side edges of BACK (3) sections above single notches, in direction of arrows.

With RIGHT sides together stitch center back seam of back sections.

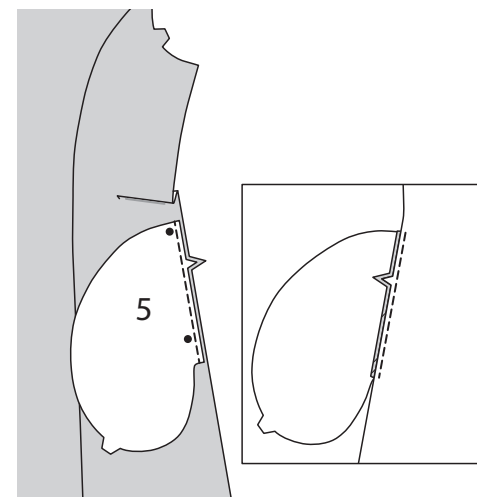
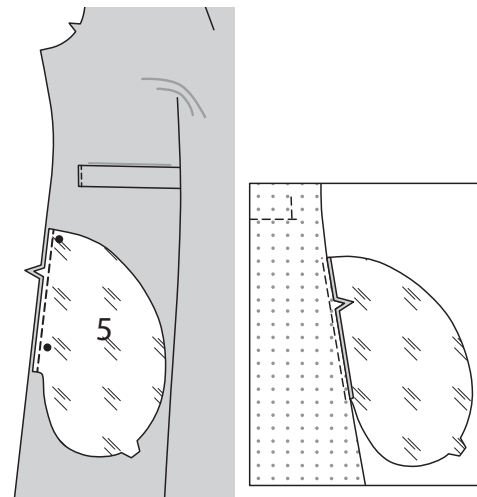


9. With RIGHT sides together, pin SIDE BACK (4) to side edge of back matching notches. Clip to stay-stitching as necessary. Baste. Stitch. Press seam toward back.



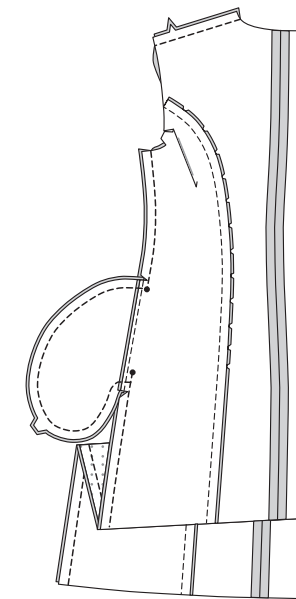
10. Stitch one **POCKET** (5) section (lining) to front at each side in a 1/4" (6mm) seam. Press seams toward pockets.

Stitch one pocket section (fabric) to back at each side in a 1/4" (6mm) seam. Press seams toward pockets.

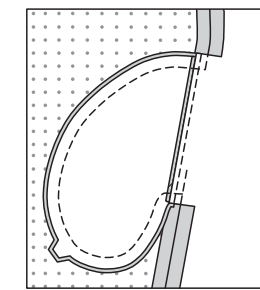


11. Stitch front and back together at sides, leaving open between large dots. Stitch pocket edges together to side seams. Clip back seam allowances above and below pockets.

Stitch front to back at shoulders.

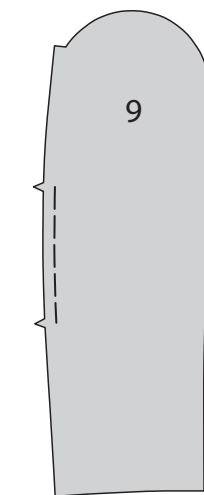


12. Turn pockets toward front along seamlines; press.

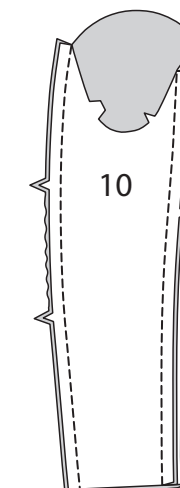


SLEEVE

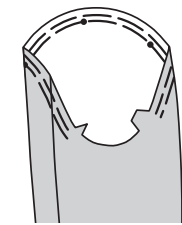
13. **EASESTITCH** back edge of UPPER SLEEVE (9) between notches.



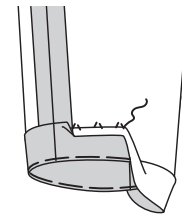
14. Pin UNDER SLEEVE (10) to upper sleeve at back edge. Adjust ease. Baste. Stitch. Stitch remaining sleeve seam.



15. **EASESTITCH** upper edge of sleeve between notches.

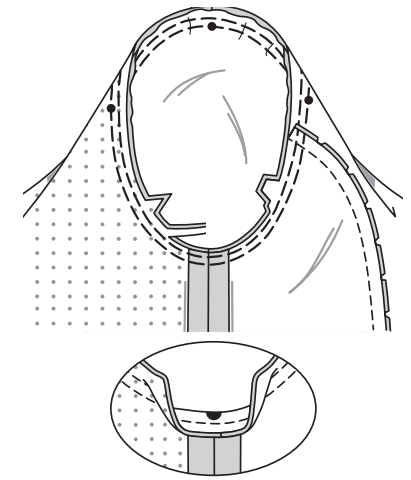


16. Turn up sleeve hem. Baste close to fold. Sew hem in place. Press.



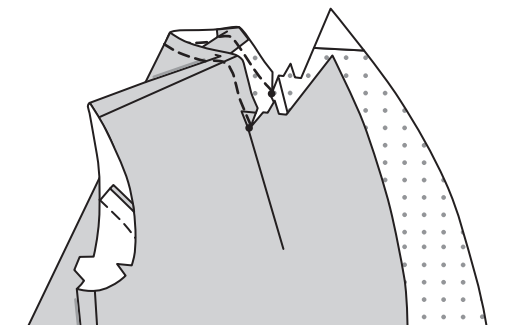
17. Turn sleeve RIGHT side out. Hold garment WRONG side out with armhole toward you. With RIGHT sides together, pin sleeve to armhole edge with center small dot at shoulder seam and large dot at side seam, matching notches and remaining small dots. Pull up ease stitches to fit.

To distribute fullness evenly, slide fabric along bobbin threads until there are no puckers or tucks on the seam line. Baste. Stitch. Stitch again 1/8" (3mm) from first stitching. Trim seam below notches close to stitching. Press only the seam allowance, shrinking out fullness.

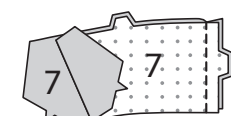


UNDER COLLAR AND SHOULDER PADS

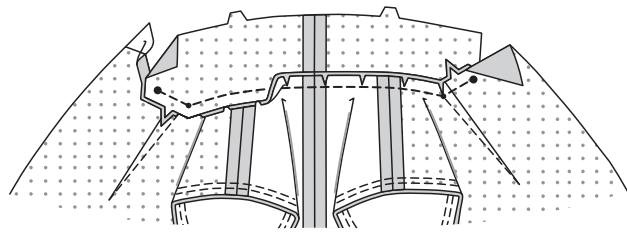
18. **STAYSTITCH** neck edge of coat between small dots. Clip to small dots, as shown.



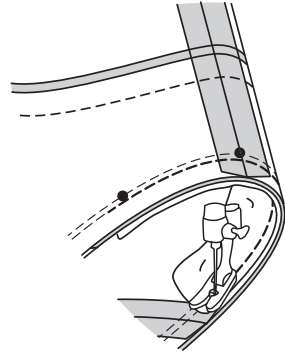
19. Stitch UNDER COLLAR (7) sections together at center back seam.



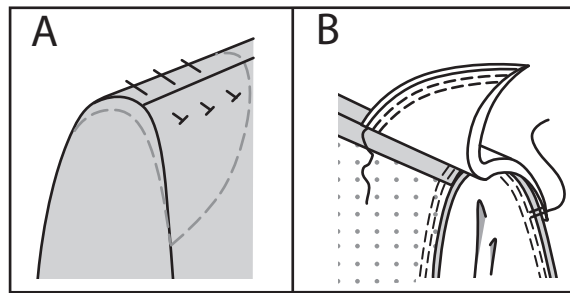
20. Pin under collar to neck edge, clipping coat neck edge where necessary. Stitch between large dots, pivoting at small dots. Trim.



21. Pin sleeve header to armhole on the INSIDE of sleeve, placing the center of header at shoulder seam, having raw edges even. Stitch 1/2" (1.3cm) from the raw edge, having inner curve (sleeve side) facing up, as shown.

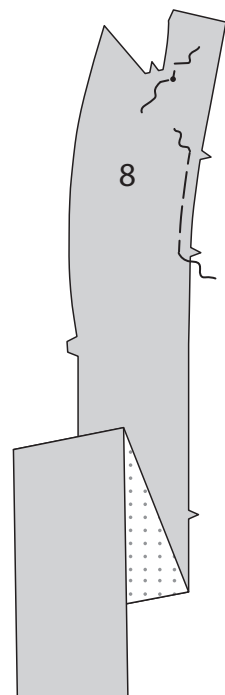


(A) Try on coat for shoulder pad placement. Pin pad to coat, extending outer edge about 5/8" (1.5cm) beyond armhole edge.
(B) Sew pad to shoulder seam allowance; tack ends to armhole seam.



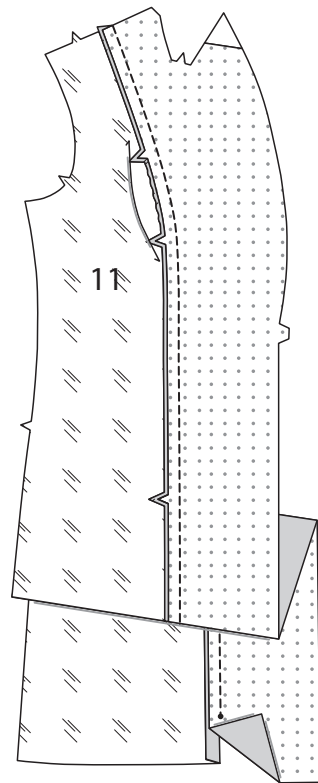
FACING, LINING AND UPPER COLLAR

NOTE: Where pieces are shared with lining, cut lining pieces 1" (2.5cm) shorter.
22. REINFORCE neck edge of FRONT FACING (8), pivoting at small dot.
EASESTITCH side edge of facing between notches.



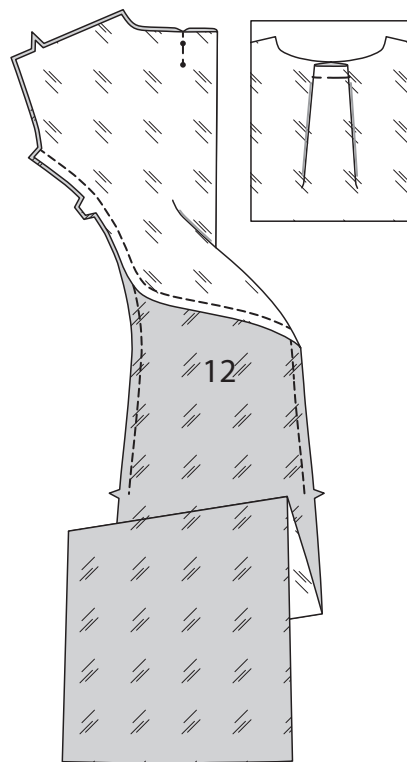
23. Pin FRONT LINING (11) to front facing matching notches. Adjust ease to fit. Baste. Stitch ending at lower small dot.

Press seam toward lining, pressing in remainder of lining seam allowance.



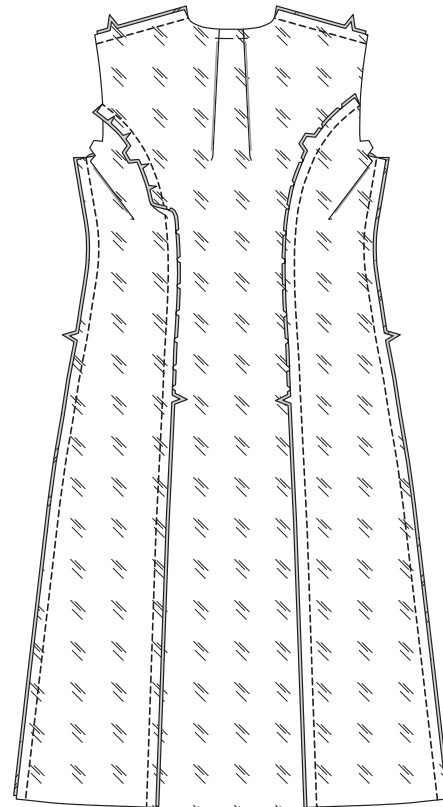
24. To make pleats in BACK LINING (12), with RIGHT sides together, bring center back pleat lines together. Stitch along broken lines ending at small dot. Bring stitching to center back, as shown. Baste pleat at upper edge.

STAYSTITCH side edges of back lining.



25. With RIGHT sides together, pin side back sections to each side of back, matching notches, clipping to stay-stitching as necessary. Stitch. Press seams toward back.

Pin back lining to front facing/lining at shoulders and sides. Stitch.

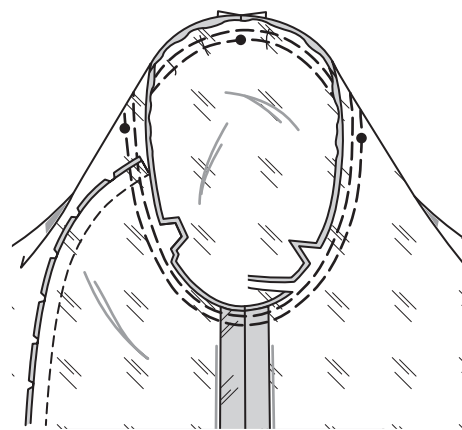


26. Prepare sleeve LINING in same manner as sleeve, disregarding hem.

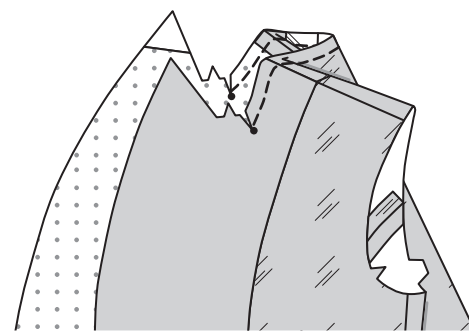
Turn sleeve RIGHT side out.

Hold garment WRONG side out with armhole toward you. With RIGHT sides together, pin sleeve to armhole edge with center small dot at shoulder seam and large dot at side seam, matching notches and remaining small dots. Pull up ease stitches to fit.

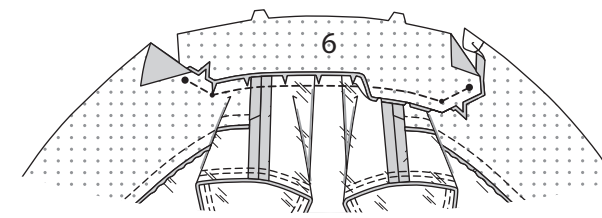
To distribute fullness evenly, slide fabric along bobbin threads until there are no puckers or tucks on the seam line. Baste. Stitch. Stitch again 1/8" (3mm) from first stitching. Trim seam below notches close to stitching. Press only the seam allowance, shrinking out fullness



27. STAYSTITCH neck edge of facing and lining between small dots. Clip to small dot, as shown.

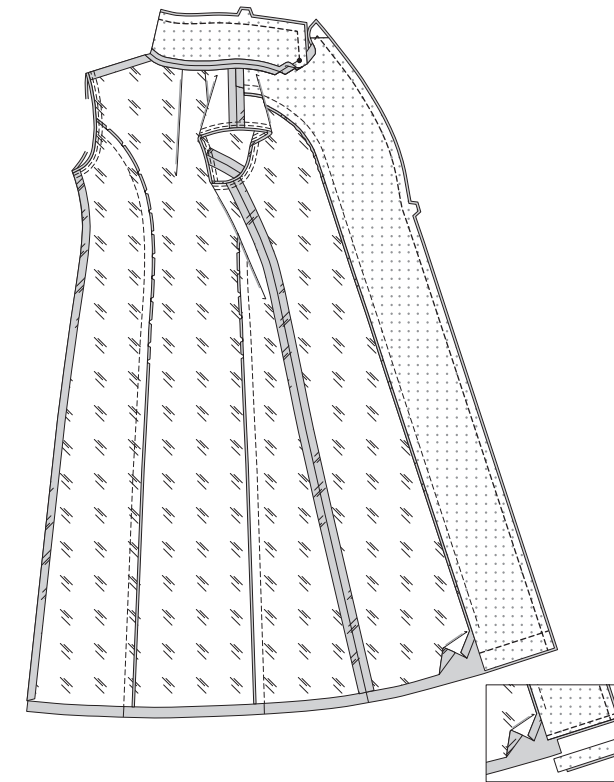


28. Pin UPPER COLLAR (6) to neck edge, clipping coat neck edge where necessary. Stitch between large dots, pivoting at small dots. Trim.

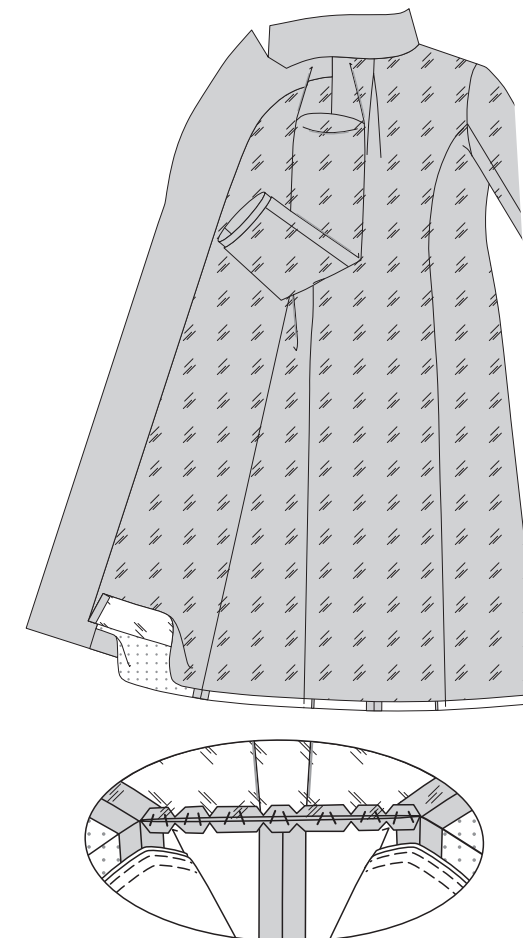


29. Pin upper collar and facing/lining to under collar and coat. Stitch front opening and lapel edges to large dot, easing lapel edges to fit. Stitch collar edges together between large dots, easing upper collar to fit. Trim.

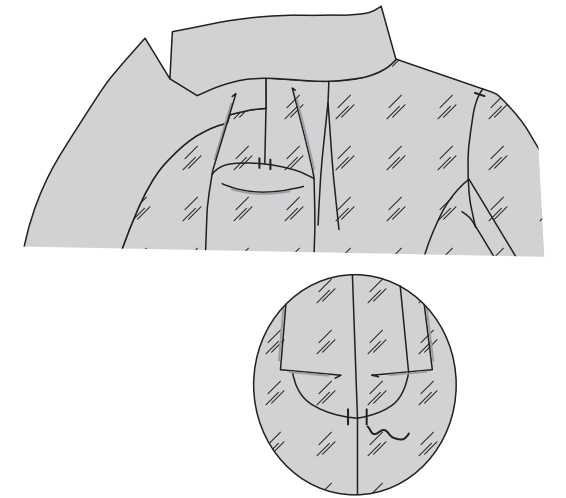
Stitch across facing 1-1/2" (3.8cm) above lower edge. Trim, as shown.



30. Turn facing/lining to INSIDE, turning collar RIGHT side out; slip sleeve lining in place. Press. Lift up facing/lining; sew neck seams together loosely by hand.

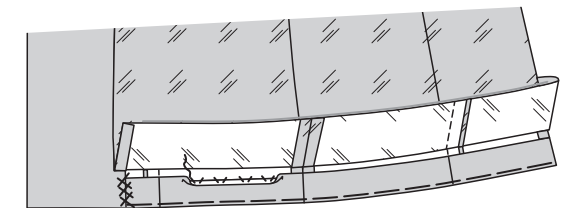


31. Turn facing/lining down. Tack sleeves at shoulders and underarms.



FINISHING

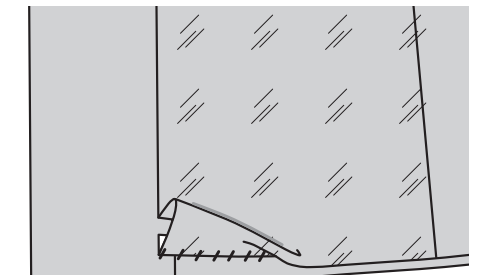
32. Turn up hem. Baste close to fold. Sew hem in place, easing in fullness if necessary. Press. Catchstitch facing to hem.



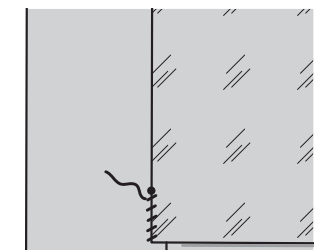
33. Turn in 5/8" (1.5cm) on lower edge of lining; place folded edge 5/8" (1.5cm) below raw edge of hem.

SLIPSTITCH in place.

NOTE: a pleat will form at lower edge for wearing ease.

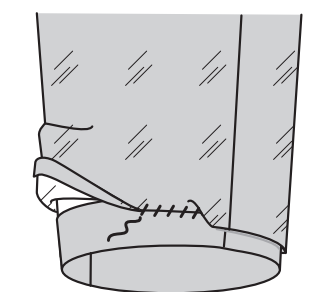


34. SLIPSTITCH remainder of lining to facing.



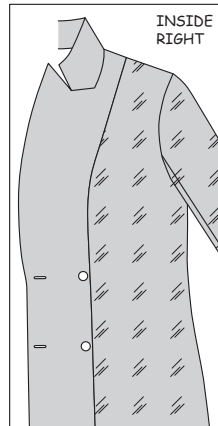
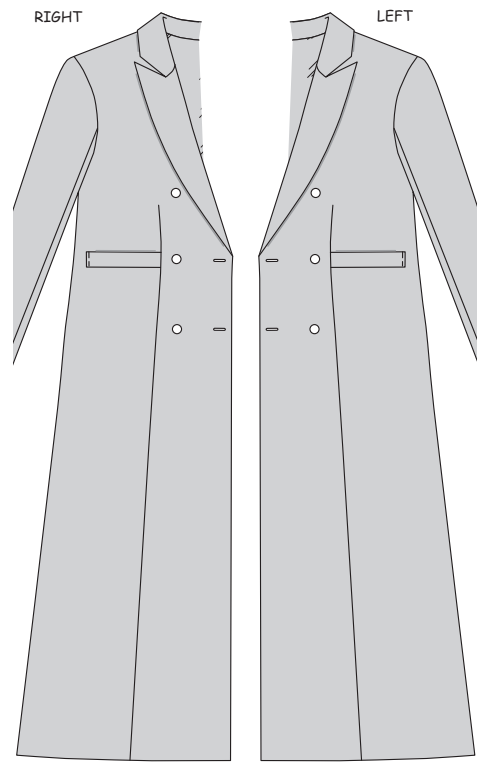
35. Turn in 5/8" (1.5cm) on lower edge of sleeve lining; place folded edge 5/8" (1.5cm) below raw edge of hem. **SLIPSTITCH** in place.

NOTE: A pleat will form at lower edge for wearing ease.

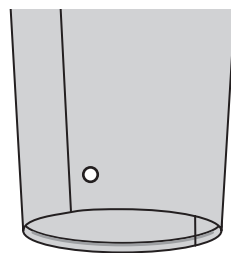


36. Make buttonholes in LEFT and RIGHT front at markings. Sew buttons to LEFT and RIGHT front at markings.

On INSIDE, sew buttons to RIGHT front facing at markings.



37. Hand-sew buttons to sleeve at markings.

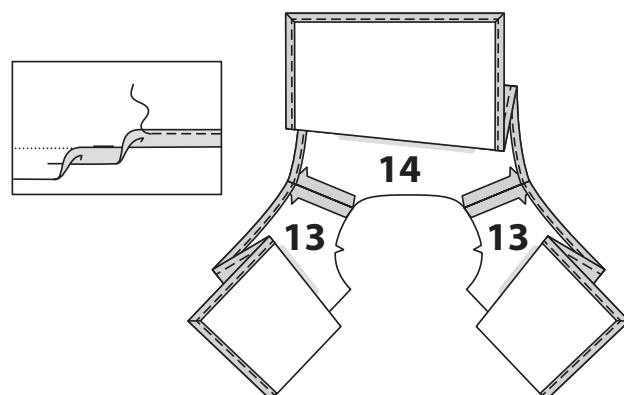


HOOD B

FRONT AND BACK

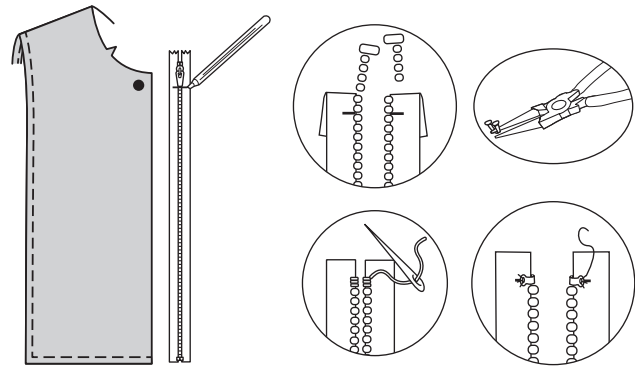
1. With RIGHT sides together, stitch FRONT (13) to BACK (14) at shoulders.

NARROW HEM lower and side edges of front and back.



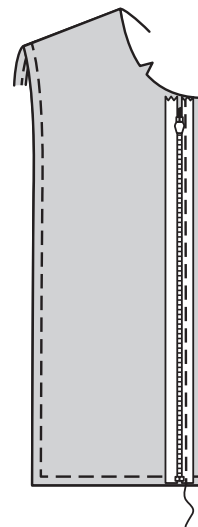
2. It is necessary to shorten zipper. To make new zipper stop, place closed zipper along opening edge and zipper stop at lower finished edge, as shown. Mark placement of new zipper stop 1/8"(3mm) below upper seamline.

Bring zipper pull BELOW marking. Remove teeth above marking for new zipper stop. Bend a straight metal eye with pliers and sew securely to each tape at new marking OR make several whipstitches over tape at marking.

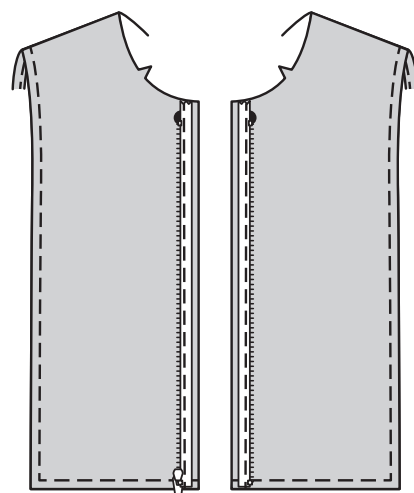


3. On OUTSIDE, pin closed zipper to RIGHT front section, having zipper face down, placing zipper tape about 1/4" (6mm) from front edge and upper end of zipper at large dot. Using an adjustable zipper foot, machine-stitch zipper in place 5/8" (1.5cm) from the front edge.

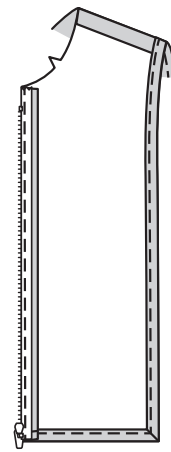
TIP - To avoid bumpy stitching around the tab and slider, stop stitching just before you get to the slider. Leaving the needle in the fabric, raise the presser foot and pull the slider down below the needle. Lower the presser foot and continue stitching.



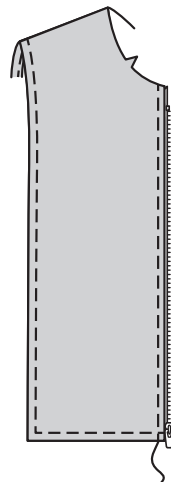
4. Separate zipper. Place remaining half of zipper on the remaining front section, having zipper face down, placing zipper tape 1/4" (6mm) from front edge and upper end at large dot, as shown. Make sure that both sides of zipper are aligned. Using an adjustable zipper foot, stitch zipper in place 5/8" (1.5cm) from the front edge.



5. Turn zipper to INSIDE; press.



6. On OUTSIDE, TOPSTITCH 1/4" (6mm) from front edges, using an adjustable zipper foot.

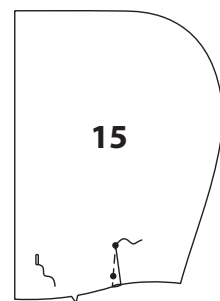


7. To make **DARTS** in HOOD (15) sections, with RIGHT sides together, fold the fabric through the center of the dart, bringing broken lines and small dots together. On INSIDE, place pins at RIGHT angles to the broken lines. Stitch the dart from wide end to point.

TIP- To prevent a "bubble" at the point, make the last few stitches right on the fold and leave the thread ends long enough to tie a knot. DO NOT back-stitch at the point.

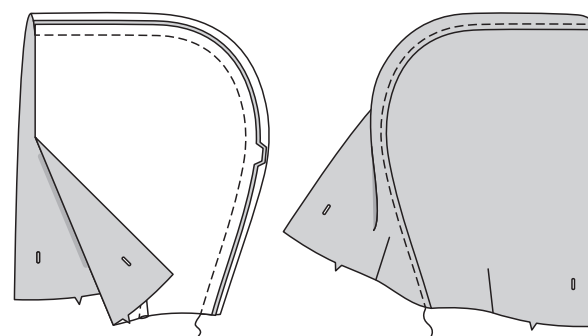
Press the dart flat along the stitching to "blend" the stitches, then press dart toward back.

Make buttonholes in hood at marking.

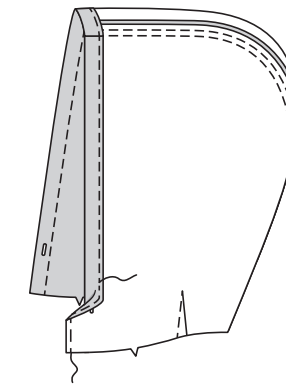


8. With RIGHT sides together, stitch center back seam of hood sections. Press seam toward LEFT side of hood.

On OUTSIDE, **TOPSTITCH** LEFT side of hood, catching in pressed seam allowance on INSIDE.

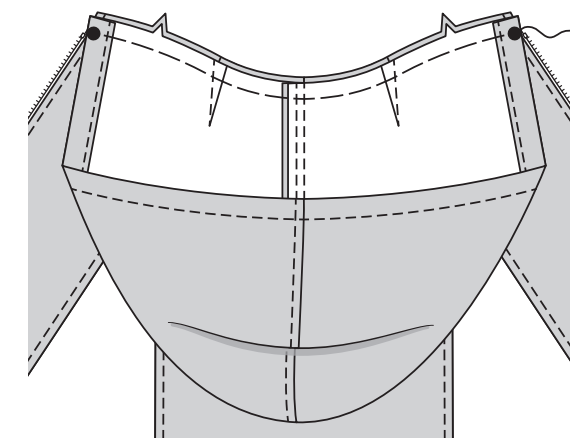


9. **FINISH** front edge if hood. Fold front edge of hood to INSIDE along fold line forming facing. Press. Stitch 1/4"(6mm) from finished edge.

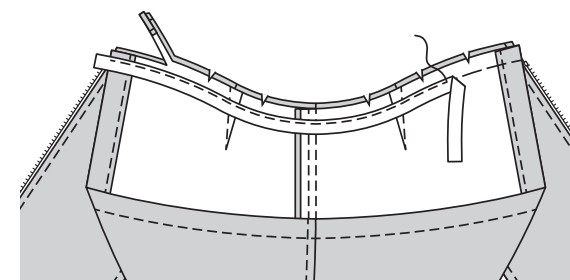


FINISHING

10. With RIGHT sides together, pin hood to neck edge, matching centers back, placing small dots at shoulder seam, having front edges even. Baste.

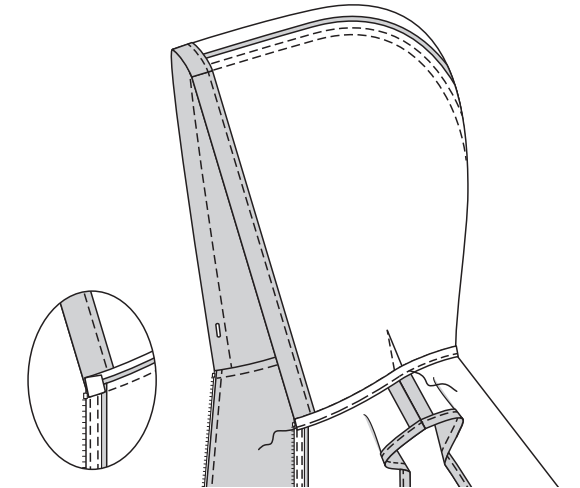


11. On INSIDE, pin 1/2" (1.3cm) wide twill tape to neck edge of garment (over hood), placing inner edge of tape just covering seam line, having ends extend 1/2" (1.3cm) beyond front edge. Stitch entire neck edge. Trim seam allowance to 3/8"(1cm), being careful not to trim tape. Clip curves.

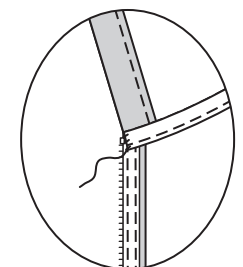


12. Turn tape over neck seam, turning under 1/2" (1.3cm) on ends; press, pressing hood out. Baste close to remaining edge of tape, being careful not to catch in zipper teeth.

On OUTSIDE, stitch neck edge as basted.



13. **SLIPSTITCH** ends of tape to zipper tape.



14. Cut a piece of twill tape 48"(122cm) long. Insert twill tape drawstring through one buttonhole opening and out the remaining buttonhole, having ends extend evenly. Knot ends.

