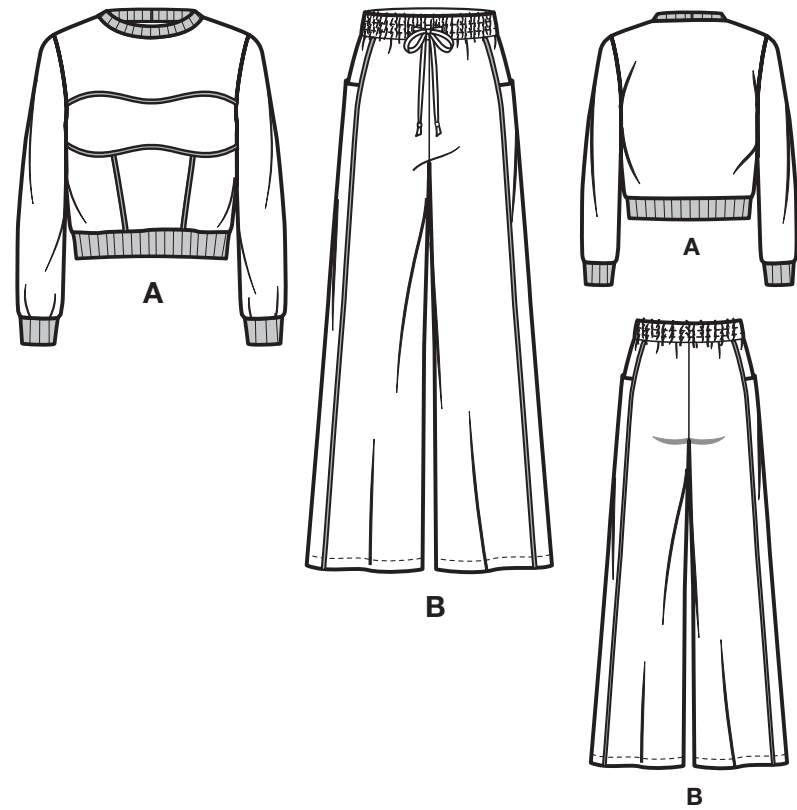
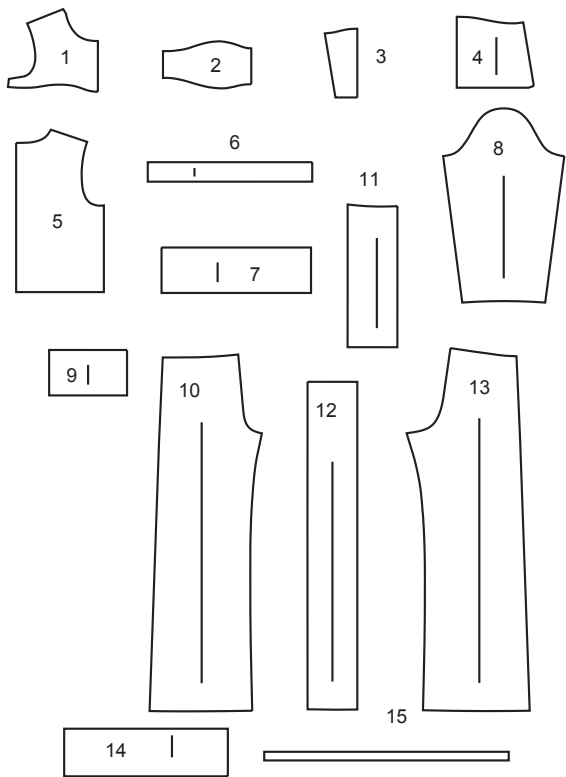




@hollydollydarling



15 PATTERN PIECES



- 1 UPPER FRONT - A
2 MIDDLE FRONT - A
3 LOWER FRONT - A
4 LOWER SIDE FRONT - A
5 BACK - A
6 NECKBAND - A
7 LOWER BAND- A
8 SLEEVE - A
- 9 SLEEVE BAND - A
10 FRONT - B
11 SIDE FRONT AND POCKET - B
12 SIDE FRONT AND SIDE BACK - B
13 BACK - B
14 CASING - B
15 GUIDE FOR ELASTIC - B

PATTERN MARKINGS

GRAINLINE: Place on straight grain of fabric, parallel to selvage or fold.

FOLDLINE: Place line on fold of fabric.

BUTTONHOLE MARKING: Indicates exact length and placement of buttonholes.

BUTTON MARKING: Indicates button placement.

NOTCHES AND SYMBOLS: For matching seams and construction details.

Indicates the Bustline, Waistline, Hip and/or Biceps. Measurements refer to circumference of Finished Garment (Body Measurement + Wearing Ease + Design Ease). Adjust pattern if necessary. The measurement excludes pleats, tucks, darts and seam allowances.

SEAM ALLOWANCE: 5/8" (1.5cm) included unless otherwise indicated, but not printed on tissue.

ADJUST IF NECESSARY

Lengthen or Shorten at adjustment lines (==) or where indicated on pattern. If substantial length is added, you may need to purchase additional fabric.

TO SHORTEN: Crease along adjustment line. Make a fold half the amount needed. Tape in place.

TO LENGTHEN: Slash between adjustment lines. Spread amount as needed, keeping edges parallel. Tape over paper.

When Alteration lines are not on tissue, lengthen or shorten at lower edge.

CUTTING AND MARKING

★ Cut other pieces first, allowing enough fabric to cut this piece. Open fabric. For "Cut 1" pieces, cut piece once on single layer of fabric with piece face up on right side of fabric.

Pattern may have cutting lines for several sizes. Select the proper cutting line or pattern pieces for your size.

Before **CUTTING** place all pieces on fabric according to layout. Pin. (**Layouts show approximate position of pattern pieces; position may vary according to your pattern size.**) Cut **ACCURATELY**, cutting notches outward.

Before removing pattern, **TRANSFER MARKINGS** and lines of construction to Wrong Side of fabric, using the Pin and Chalk Pencil method or Tracing Paper and Dressmaker Wheel. Markings needed on right side of fabric should be thread traced.

NOTE: Broken-line boxes (a! b! c!) in layouts represent pieces cut by measurements provided.

SHRINK FABRIC if not labeled pre-shrunk. Press.

CIRCLE LAYOUT for View, Size, Fabric Width.

Use **WITH NAP** layout for fabrics with one-way designs, nap, pile or surface shading. Because most knits have surface shading, a with nap layout is used.

For **DOUBLE THICKNESS (WITH FOLD)** - fold fabric with right sides together.

* **DOUBLE THICKNESS (WITHOUT FOLD)** - For fabrics with nap, fold fabric crosswise, right sides together. Mark as shown. Cut along crosswise fold of fabric (A). Turn upper layer 180° so arrows go in same direction and place over lower layer, right sides together (B).

For **SINGLE THICKNESS** - place fabric right side up. (For Fur Pile fabrics, place pile side down.)

CUTTING LAYOUTS

RIGHT SIDE OF PATTERN	WRONG SIDE OF PATTERN	RIGHT SIDE OF FABRIC	WRONG SIDE OF FABRIC

TOP A

USE PIECES: 1 2 3 4 5 8

60" (150 CM)
WITH NAP
ALL SIZES

PANTS B

USE PIECES: 10 11 12 13 14

60" (150 CM)
WITH NAP
SIZES 4 6 8 10 12

CONTRAST (NECKBAND, LOWER BAND, SLEEVE BAND) - RIB KNIT

USE PIECES: 6 7 9

60" (150 CM)
WITH NAP
ALL SIZES

SEWING INFORMATION

FABRIC KEY

SEAM ALLOWANCES

Use 5/8" (1.5cm) seam allowances unless otherwise indicated.

PIN AND FIT

Pin or baste seams, **RIGHT SIDE TOGETHER**, matching notches. Fit garment before stitching major seams.

PRESS

Press seam allowances flat; then open unless otherwise stated. Clip where necessary so they lie flat.

GLOSSARY

GLOSSARY OF SEWING METHODS

Sewing methods shown in **BOLD** are defined below:

APPLY PIPING – On **OUTSIDE**, pin piping to project edges as Sewing Directions indicate, having cord extend beyond seamline and flat/lip edge within the seam allowance. Machine-baste as close to cord as possible without catching in the cord, using a zipper or cording foot.

UNDERSTITCH – Press facing and seam away from garment, stitching through facing and seam allowances close to seam.

SCAN QR CODE FOR A STEP-BY-STEP VIDEO TUTORIAL

@hollydollydarling

PATTERN PIECES WILL BE IDENTIFIED BY NUMBERS THE FIRST TIME THEY ARE USED.

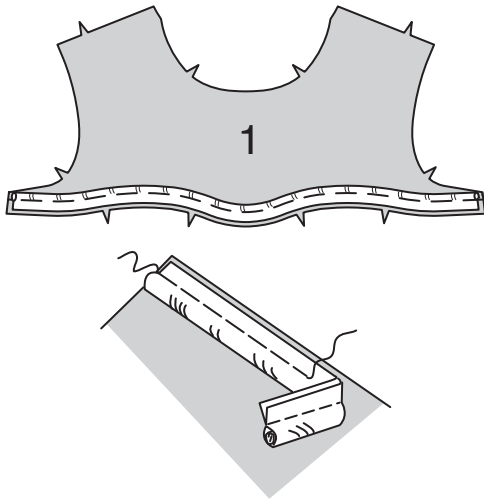
STITCH 5/8" (1.5CM) SEAMS WITH RIGHT SIDES TOGETHER UNLESS OTHERWISE STATED.

SEWING DIRECTIONS

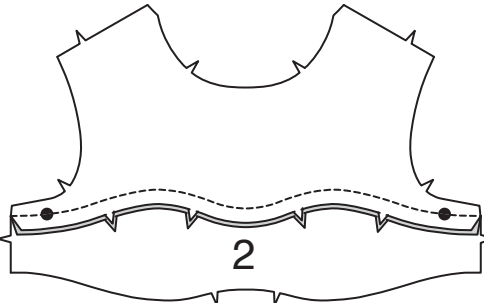
TOP A

FRONT AND BACK

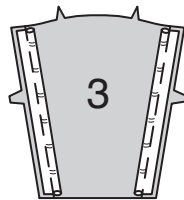
1. Cut a piece of piping or elastic ruffle trim the length of the lower seamline of FRONT (1) and APPLY PIPING.



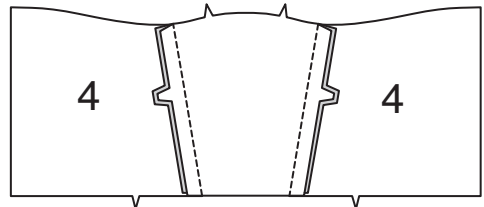
2. With RIGHT sides together and raw edges even, pin upper edge of MIDDLE FRONT (2) to lower edge of front (over piping), matching centers, large dots, and notches. Stitch. Press seam toward middle front, pressing piping out.



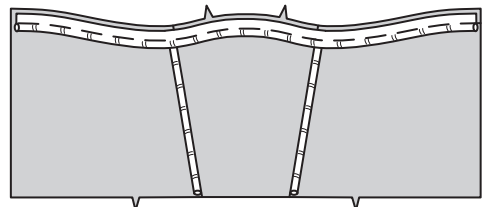
3. Cut a piece of piping or elastic ruffle trim the length of each side front seamline of LOWER FRONT (3) and APPLY PIPING.



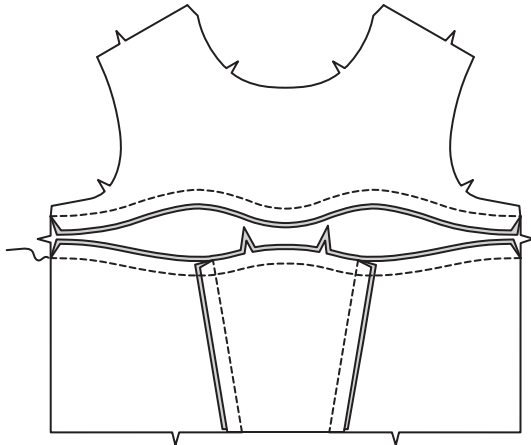
4. With RIGHT sides together and raw edges even, pin LOWER SIDE FRONT (4) to lower front (over piping), matching notches. Stitch. Press seam toward lower side front, pressing piping out.



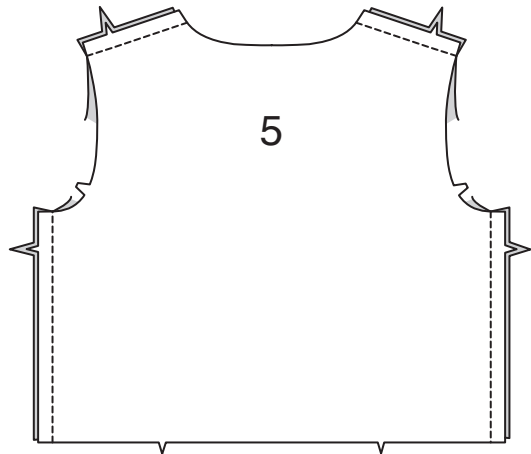
5. Cut a piece of piping or elastic ruffle trim the length of upper seamline of lower front, as shown, and APPLY PIPING.



6. With RIGHT sides together and raw edges even, pin middle front to lower front (over piping), matching centers and notches. Stitch. Press seam toward middle front, pressing piping out.



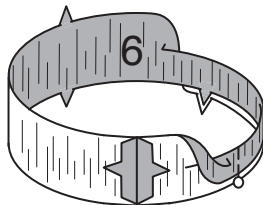
7. With RIGHT sides together and raw edges even, pin front to BACK (5) along shoulder and side edges. Stitch.



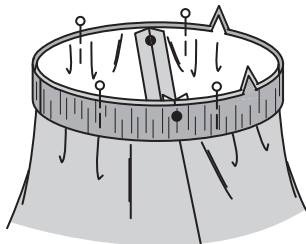
NECKBAND

8. Stitch center back edges of NECKBAND (6) together.

Fold band in half, lengthwise, with WRONG sides together; press. Pin.

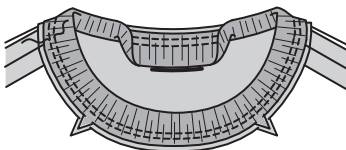


9. On OUTSIDE, pin band to neck edge, matching centers and notches, placing small dots at shoulder seams and having raw edges even.

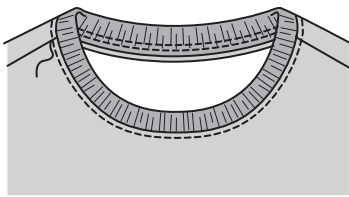


10. Stitch in a 3/8" (1cm) seam, stretching the band to fit. Stitch again 1/8" (3mm) away from first stitching within the seam allowance.

Press seam toward top, pressing band out.



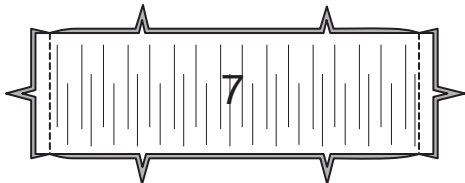
11. On OUTSIDE, edgestitch top close to seam.



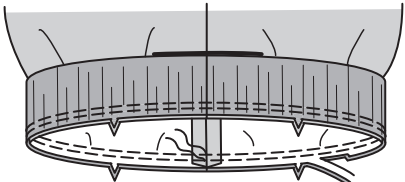
LOWER BAND

12. Stitch LOWER BAND (7) sections together at side edges.

Fold band in half, lengthwise, with WRONG sides together; press. Pin.

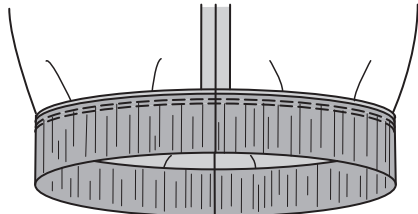


13. On OUTSIDE, pin band to lower edge of top with raw edges even, matching centers, seams, and notches.

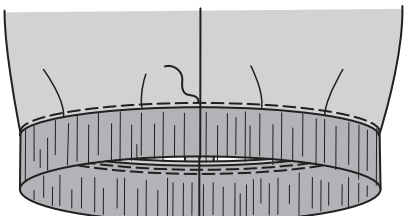


14. Stitch, stretching the band to fit. Stitch again 1/4" (6mm) away from first stitching within the seam allowance. Trim seam close to second stitching.

Press seam toward top, pressing band out.

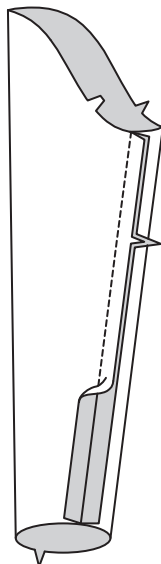


15. On OUTSIDE, edgestitch top close to seam.



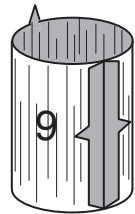
SLEEVE

16. Stitch underarm edges of SLEEVE (8) together.

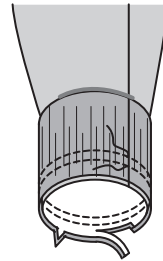


17. Stitch underarm edges of SLEEVE BAND (9) together.

Fold band in half, lengthwise, with WRONG sides together; press. Pin.

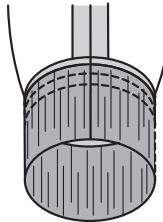


18. On OUTSIDE, pin band to lower edge of sleeve with raw edges even, matching seams and notches.

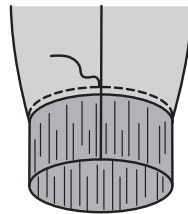


19. Stitch, stretching the band to fit. Stitch again 1/4" (6mm) away from first stitching within the seam allowance. Trim seam close to second stitching.

Press seam toward sleeve, pressing band out.

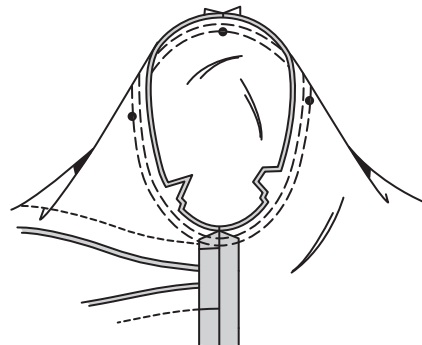


20. On OUTSIDE, edgestitch sleeve close to seam.



21. Turn sleeve RIGHT side out. Hold top WRONG side out with armhole toward you. With RIGHT sides together, pin sleeve to armhole edge with center small dot at shoulder seam, matching underarm seams, notches and remaining small dots.

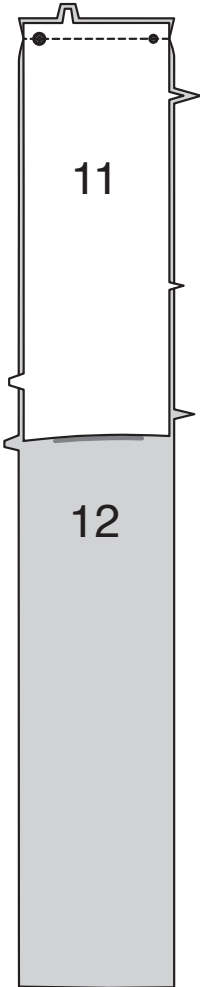
Baste. Stitch. Stitch again 1/8" (3mm) from first stitching. Trim seam below notches close to stitching. Press only the seam allowance, shrinking out fullness.



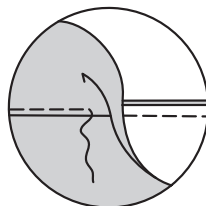
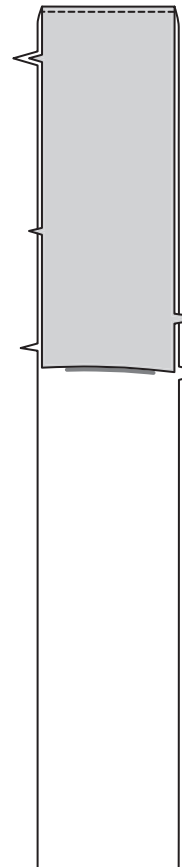
PANTS B

SIDE PANEL AND POCKET

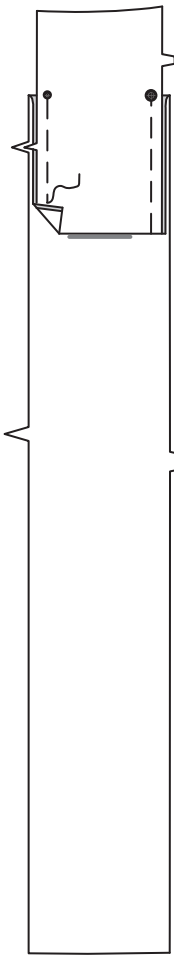
1. With RIGHT sides together and raw edges even, pin lower edge of SIDE FRONT AND POCKET (11) to upper edge of SIDE FRONT AND SIDE BACK (12), matching small dots, large dots, and notches. Stitch.



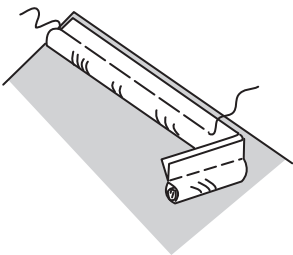
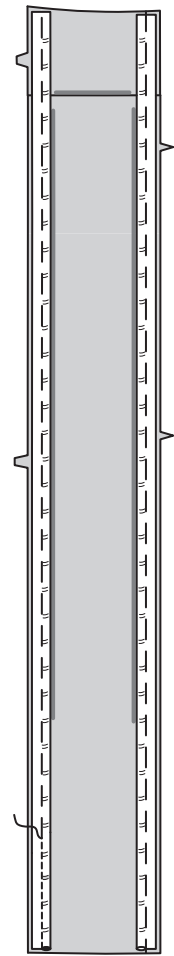
2. UNDERSTITCH pocket facing. Turn pocket and facing to INSIDE; press.



3. On INSIDE, fold pocket up along foldline with RIGHT sides together, matching small dots, large dots, and notches. Baste raw edges together.



4. Cut a piece of piping or elastic ruffle trim the length of each side front and side back seamline and **APPLY PIPING**.

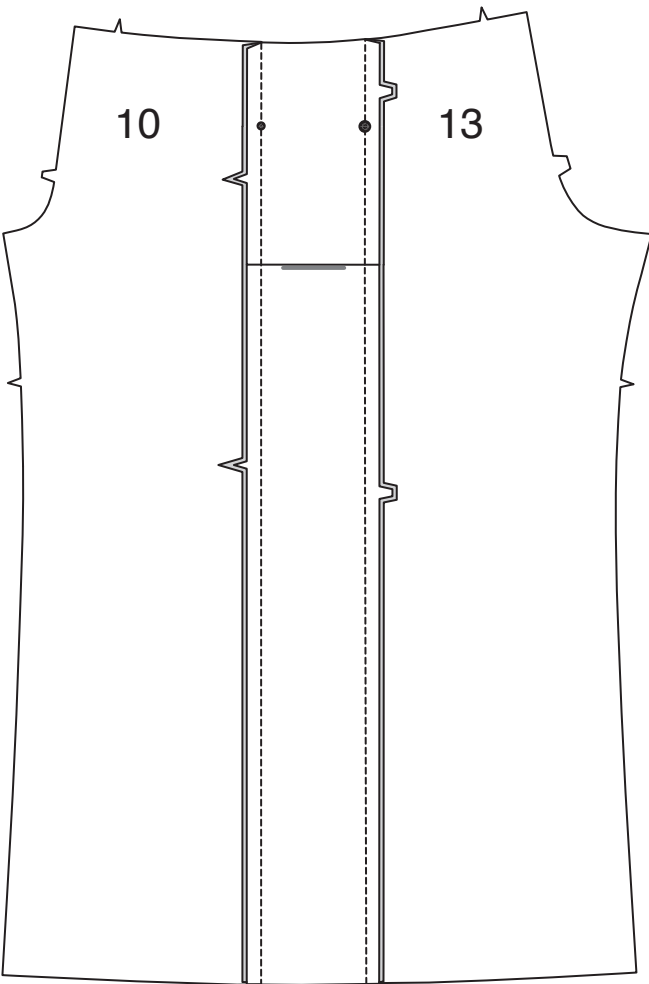


FRONT AND BACK

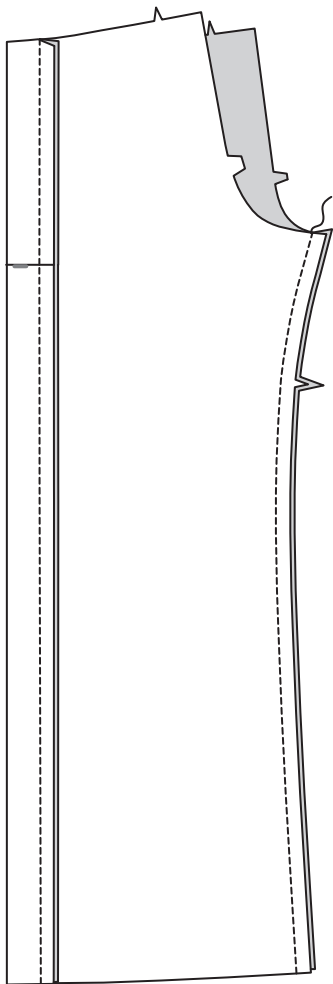
5. With RIGHT sides together and raw edges even, pin side panel to FRONT (10) along side front edges, matching small dots and notches. Stitch.

Stitch side panel to BACK (13) along side back edges, matching large dots and notches. Stitch.

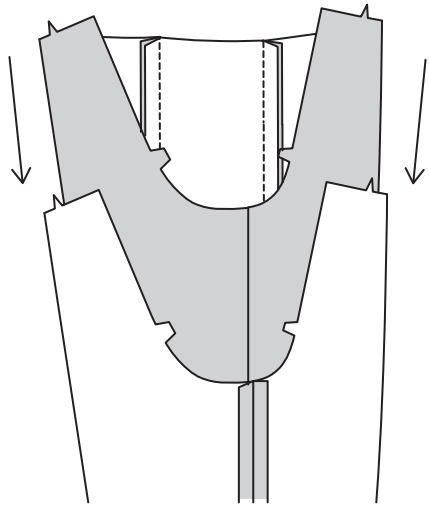
Press seams away from side panel.



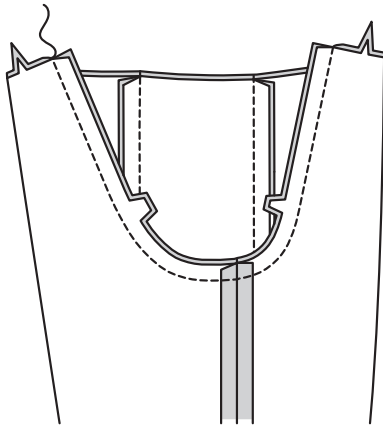
6. Stitch front to back at inner leg edges. Press open.



7. With RIGHT sides together, insert one leg INSIDE the other.

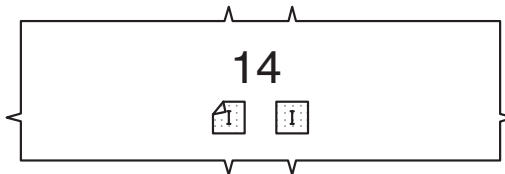


8. With RIGHT sides together, pin center seam, matching inner leg seams and notches. Stitch. To reinforce seam, stitch again over first stitching.

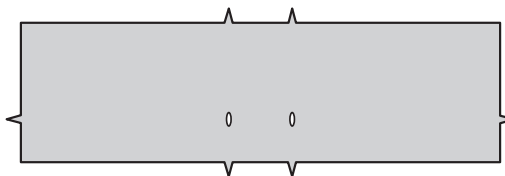


WAISTBAND

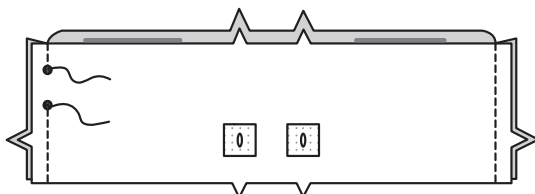
9. Cut two 1-1/4" (3.2cm) squares of fusible stretch interfacing from a remnant. Center squares over buttonhole markings on one CASING (14) section, and fuse in place following manufacturer's directions. This is the front casing.



10. To make openings for drawstring, on OUTSIDE, make buttonholes in front casing at markings.

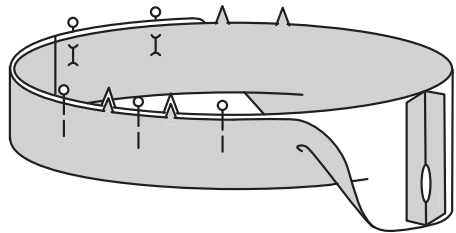


11. With RIGHT sides together, stitch side seams of CASING (14), leaving an opening in LEFT side seam between small dots, as shown. Back-stitch at small dots to reinforce seam.



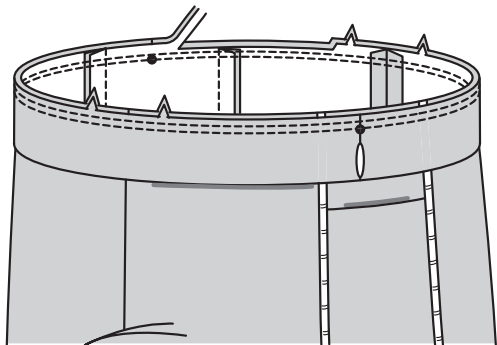
12. Press seams open.

Fold casing in half, lengthwise, with WRONG sides together, having raw edges even. Pin raw edges together.



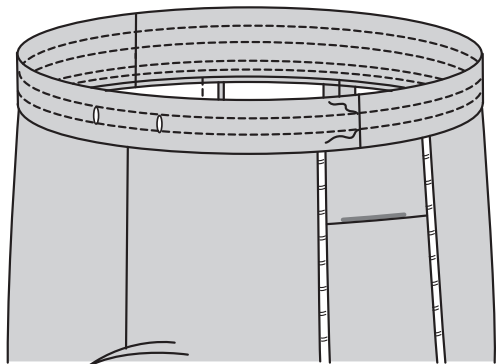
13. The side with the opening is the underside of the casing.

With the underside of casing facing you, pin casing to pants, matching centers and side seams. Stitch along seam line, stretching the band to fit. Stitch again 1/4" (6mm) from first stitching within seam allowance. Trim close to second stitching.

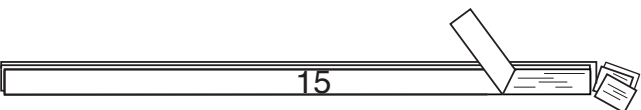


14. Press seam toward garment, pressing casing out.

To form three separate casings, stitch along stitching lines, as shown.



15. Cut three pieces of elastic the length of GUIDE FOR ELASTIC (15). Transfer markings.

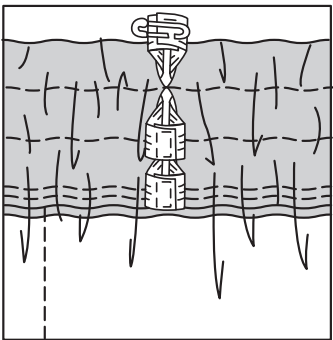


16. Insert elastic through opening in each casing, working elastic through all rows at same time, eliminating the problem of pulling the last piece of elastic through an already bunched up casing.

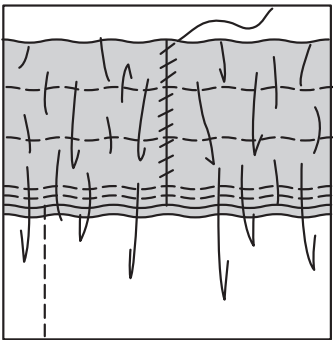
Overlap ends and hold with safety pins.

Try on pants and adjust to fit.

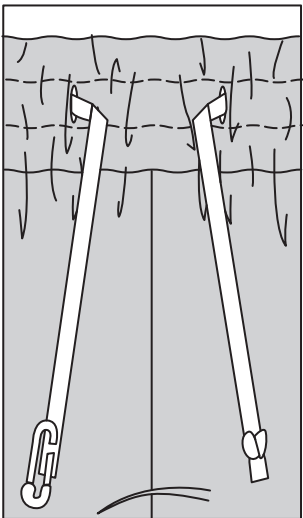
Stitch ends of elastic together, securely.



17. Slipstitch opening edges of each casing together. Distribute fullness evenly.



18. Cut a piece of 1/2" (1.3cm) wide twill tape or ribbon, the length of the guide for elastic, plus 22" (56cm). Attach a safety pin to one end. Insert tape into one buttonhole opening in casing and out through the other. Knot ends. Tie into bow at front when wearing.



FINISHING

19. Press up 1-1/4" (3.2cm) hem allowance. Stitch 1/4" (6mm) from raw edge.

