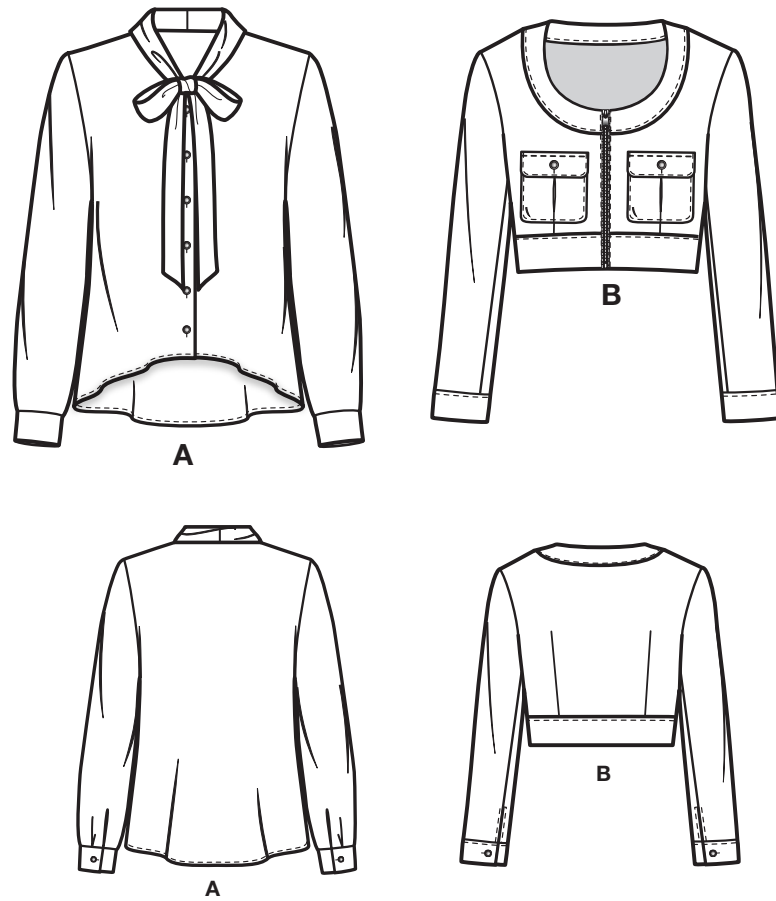
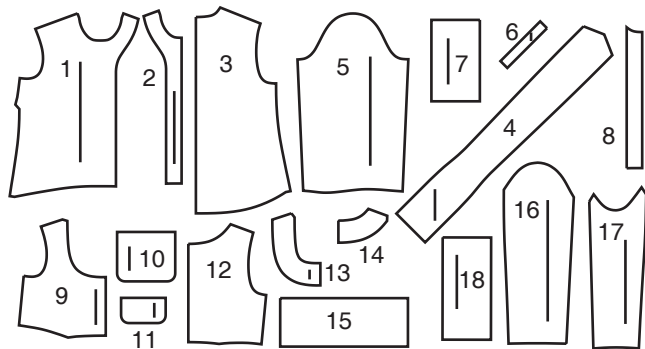


@LWS_lynnwardrobesews



18 PATTERN PIECES



- 1 Front-A
2 Front Interfacing-A
3 Back-A
4 Collar-A
5 Sleeve-A
6 Continuous Lap-A
7 Cuff-A
8 Buttonhole Guide-A
9 Front-B
10 Pocket-B
11 Flap-B
12 Back-B
13 Front Neck Band-B
14 Back Neck Band-B
15 Lower Band-B
16 Upper Sleeve-B
17 Under Sleeve-B
18 Cuff-B

PATTERN MARKINGS

- GRAINLINE: Place on straight grain of fabric, parallel to selvage or fold.
FOLDLINE: Place line on fold of fabric.
BUTTONHOLE MARKING: Indicates exact length and placement of buttonholes.
BUTTON MARKING: Indicates button placement.
NOTCHES AND SYMBOLS: For matching seams and construction details.
Indicates the Bustline, Waistline, Hip and/or Biceps. Measurements refer to circumference of Finished Garment (Body Measurement + Wearing Ease + Design Ease). Adjust pattern if necessary. The measurement excludes pleats, tucks, darts and seam allowances.
SEAM ALLOWANCE: 5/8" (1.5cm) included unless otherwise indicated, but not printed on tissue.

ADJUST IF NECESSARY

- Lengthen or Shorten at adjustment lines (==) or where indicated on pattern. If substantial length is added, you may need to purchase additional fabric.
TO SHORTEN: Crease along adjustment line. Make a fold half the amount needed. Tape in place.
TO LENGTHEN: Slash between adjustment lines. Spread amount as needed, keeping edges parallel. Tape over paper.
When Alteration lines are not on tissue, lengthen or shorten at lower edge.

CUTTING AND MARKING

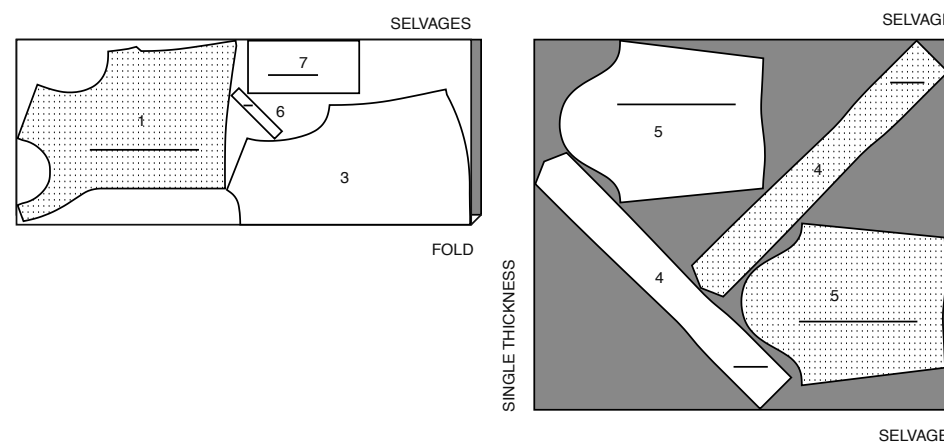
- SHRINK FABRIC if not labeled pre-shrunk. Press.
CIRCLE LAYOUT for View, Size, Fabric Width.
Use WITH NAP layout for fabrics with one-way designs, nap, pile or surface shading. Because most knits have surface shading, a with nap layout is used.
For DOUBLE THICKNESS (WITH FOLD) - fold fabric with right sides together.
DOUBLE THICKNESS (WITHOUT FOLD) - For fabrics with nap, fold fabric crosswise, right sides together. Mark as shown. Cut along crosswise fold of fabric (A). Turn upper layer 180° so arrows go in same direction and place over lower layer, right sides together (B).
For SINGLE THICKNESS - place fabric right side up. (For Fur Pile fabrics, place pile side down.)
Cut other pieces first, allowing enough fabric to cut this piece. Open fabric. For "Cut 1" pieces, cut piece once on single layer of fabric with piece face up on right side of fabric.
Pattern may have cutting lines for several sizes. Select the proper cutting line or pattern pieces for your size.
Before CUTTING place all pieces on fabric according to layout. Pin. (Layouts show approximate position of pattern pieces; position may vary according to your pattern size.) Cut ACCURATELY, cutting notches outward.
Before removing pattern, TRANSFER MARKINGS and lines of construction to Wrong Side of fabric, using the Pin and Chalk Pencil method or Tracing Paper and Dressmaker Wheel. Markings needed on right side of fabric should be thread traced.
NOTE: Broken-line boxes (a! b! c!) in layouts represent pieces cut by measurements provided.

CUTTING LAYOUTS

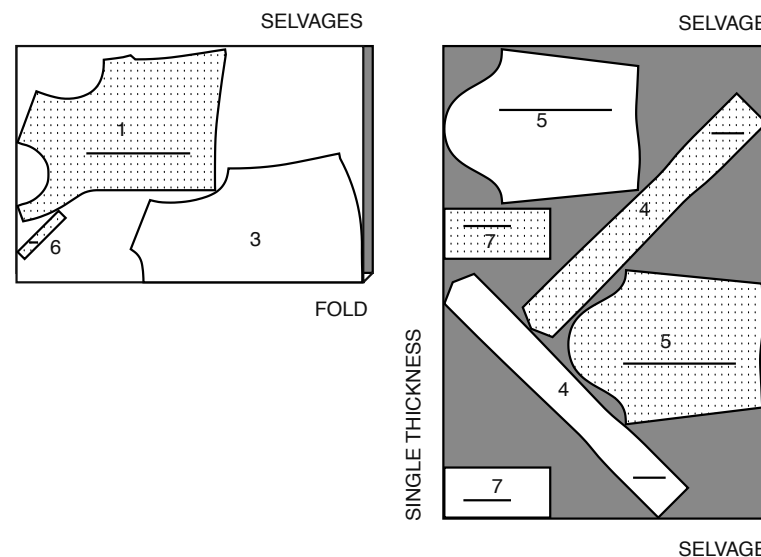
Table with 4 columns: RIGHT SIDE OF PATTERN, WRONG SIDE OF PATTERN, RIGHT SIDE OF FABRIC, WRONG SIDE OF FABRIC.

BLOUSE A
PIECES 1 3 4 5 6 7

45" (115CM) WITH NAP ALL SIZES

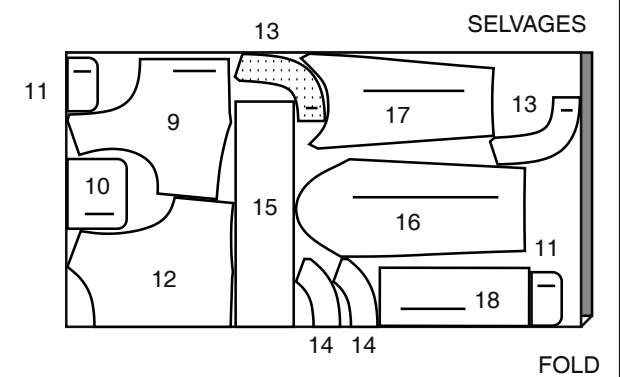


60" (150CM) WITH NAP ALL SIZES



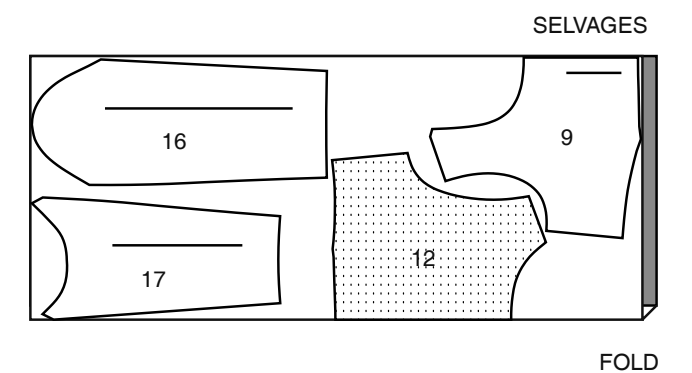
JACKET B
PIECES 9 10 11 12 13 14 15 16 17 18

60" (150CM) WITH NAP ALL SIZES



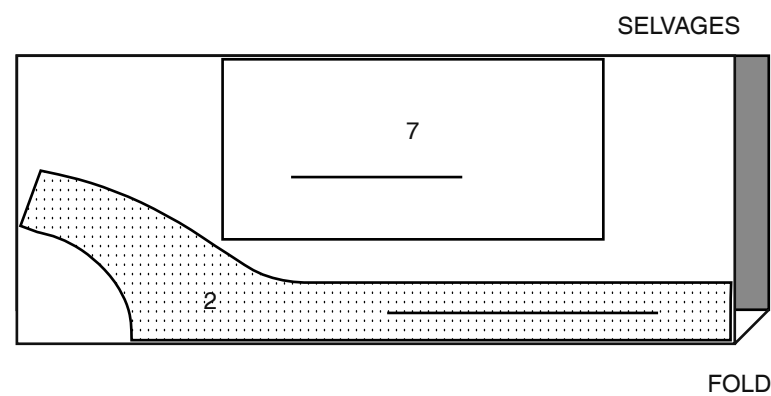
LINING B
PIECES 9 13 16 17

45" (115CM) WITHOUT NAP ALL SIZES



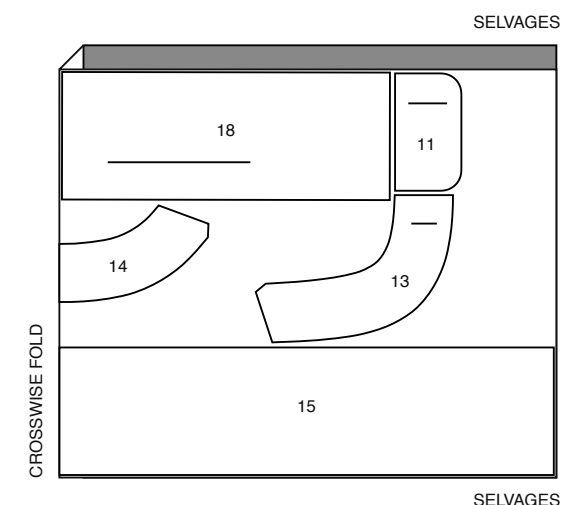
INTERFACING A
PIECES 2 7

20" (51CM) ALL SIZES



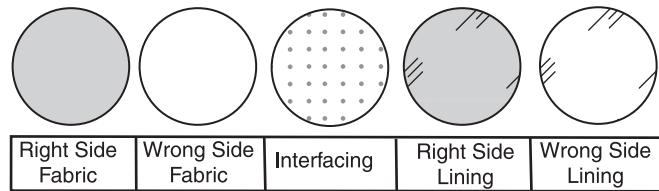
INTERFACING B
PIECES 11 13 14 15 18

20" (51CM) ALL SIZES



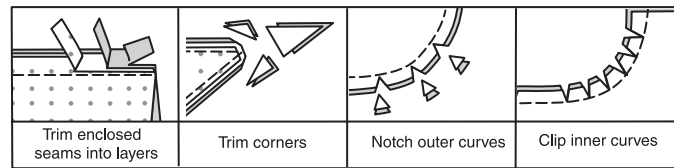
SEWING INFORMATION

FABRIC KEY



SEAM ALLOWANCES

Use 5/8" (1.5cm) seam allowances unless otherwise indicated.



PIN AND FIT

Pin or baste seams, **RIGHT SIDE TOGETHER**, matching notches. Fit garment before stitching major seams.

PRESS

Press seam allowances flat; then open unless otherwise stated. Clip where necessary so they lie flat.

GLOSSARY

GLOSSARY OF SEWING METHODS

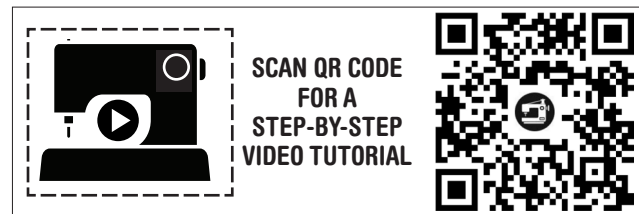
Sewing methods shown in **BOLD** are defined below:

EASE – Loosen needle tension slightly. On **OUTSIDE**, stitch 5/8" (1.5cm) from cut edge using a long stitch. Stitch again 1/4" (6mm) from the first stitching within the seam allowance.

EDGE FINISH – Stitch 1/4" (6mm) from edge, turn under edge along stitching and stitch or zig-zag, or overlock/serge raw edges.

STAYSTITCH – Stitch 1/2" (1.3cm) from cut edge in direction of arrows. This stitching stays in permanently to prevent stretching on curved edges. (Shown only in the first illustration.)

UNDERSTITCH – Press facing and seam away from garment, stitching through facing and seam allowances close to seam.



@LWS_lynnwardrobesews

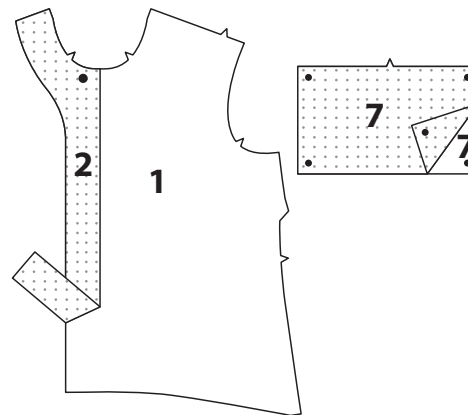
PATTERN PIECES WILL BE IDENTIFIED BY NUMBERS THE FIRST TIME THEY ARE USED.

STITCH 5/8" (1.5CM) SEAMS WITH RIGHT SIDES TOGETHER UNLESS OTHERWISE STATED.

BLOUSE A

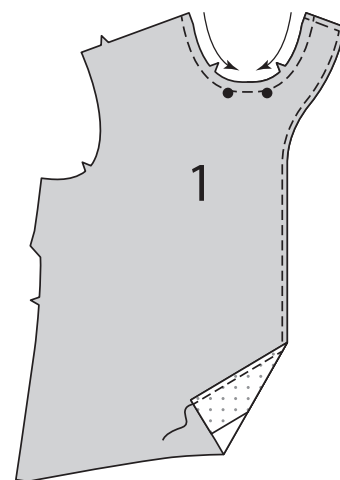
INTERFACING

1. Pin **FRONT INTERFACING (2)** sections to **WRONG** side of **FRONT (1)** sections with raw edges even. Pin interfacing to **WRONG** side of **CUFF (7)** sections. Fuse interfacing in place following manufacturer's directions.



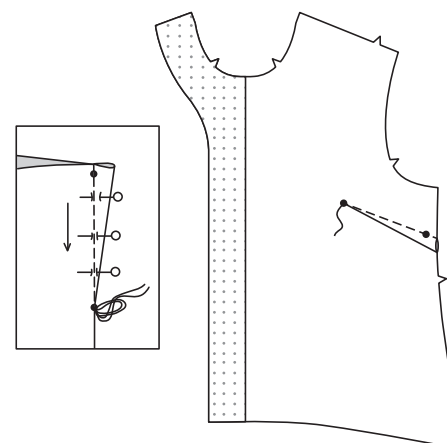
FRONT AND BACK

2. **STAYSTITCH** neck edge of **FRONT (1)**. **EDGE FINISH** inner and shoulder edge of front facing.

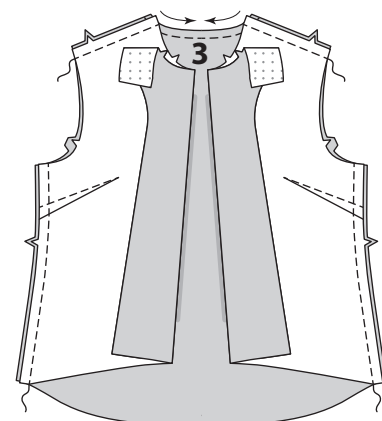


3. To make dart in front, with **RIGHT** sides together, fold the fabric through the center of the dart, bringing broken lines and small dots together. On **INSIDE**, place pins at **RIGHT** angles to the broken lines. Stitch the dart from wide end to point. Press the dart flat along the stitching to "blend" the stitches, then press dart down.

TIP – To prevent a "bubble" at the point, make the last few stitches right on the fold and leave the thread ends long enough to tie a knot. **DO NOT** back-stitch at the point.

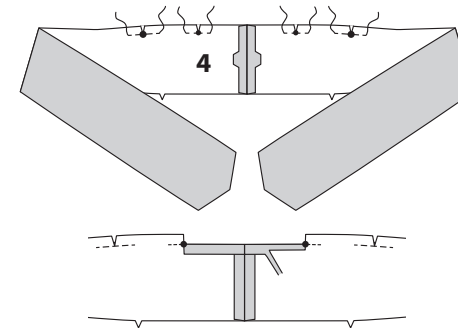


4. **STAYSTITCH** neck edge of **BACK (3)**. With **RIGHT** sides together and raw edges even, pin front to back at shoulder and side edges. Stitch.

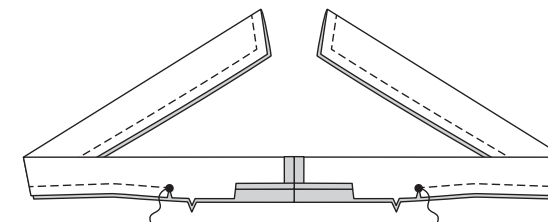


COLLAR, TIES, AND FACING

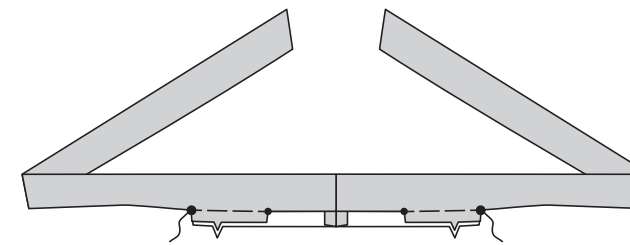
5. Stitch **COLLAR (4)** sections at center back edges. To reinforce unnotched edge of collar at small and large dots, stitch along seam line for about 1" (2.5cm) each side of small and large dots, stitching through dots, as shown. Clip to stitching at dots. Press under 5/8" (1.5cm) seam allowance between the small dots, and trim to 1/4" (6mm).



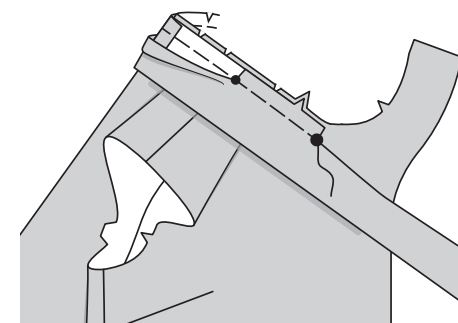
6. Fold collar in half, lengthwise, with **RIGHT** sides together, matching large dots. Stitch each collar tie from end to large dot, back-stitching at dot to reinforce the seams.



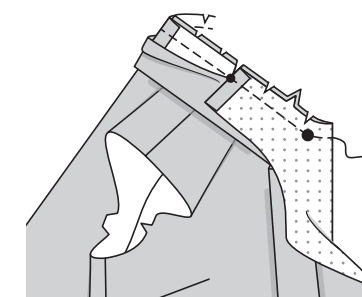
7. Turn collar ties **RIGHT** side out; press. Baste raw edges together between large and small dots.



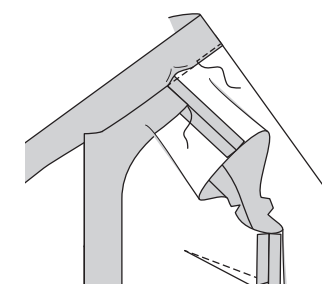
8. With **RIGHT** sides together and raw edges even, pin collar to neck edge, matching large dots and notches, placing small dots at shoulder seams. Keeping collar facing (between the small dots) and ties free. Baste between the large dots, back-stitching at dots to reinforce the seam.



9. Fold front extension to **OUTSIDE** along foldline, forming facing; baste to neck edge. Clip neck edge through all thicknesses at small dot. Stitch entire neck edge as basted, being careful not to catch in free edges of ties or collar.

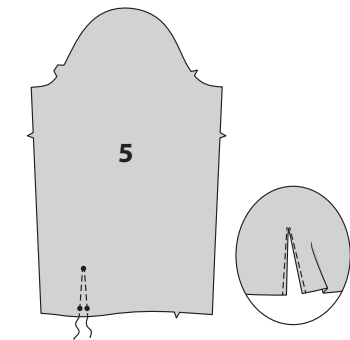


10. Turn facing to **INSIDE**, turning back neck seam toward collar; press. Stitch pressed edge of collar over neck seam. To keep the facing in place, tack facing to shoulder seam allowances by tacking it by hand or using a small piece of fusible web.

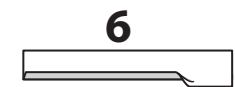


SLEEVE AND CUFF

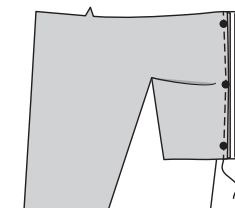
11. To make slash opening at lower edge of **SLEEVE (5)**, stitch along stitching lines. Pivot and take one small stitch across the point. Slash between stitching, being careful not to slash through the stitch at the point.



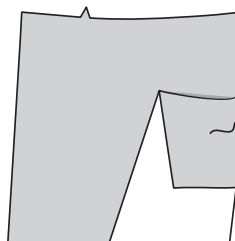
12. Press under 1/4" (6mm) on unmarked edge of **CONTINUOUS LAP (6)**.



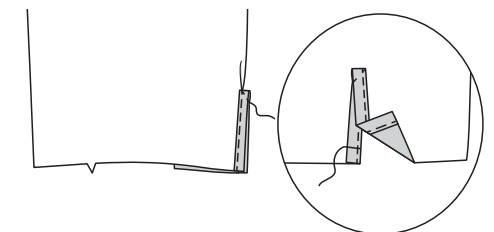
13. Spread slashed edges of sleeve apart so that they form a straight line. Pin **RIGHT** side of continuous lap to **WRONG** side of slashed edges, matching stitching lines and small dots. Sleeve seam allowance will be 1/4" (6mm) at the ends but taper close to nothing at the center dot. Stitch along stitching line, being careful not to pucker sleeve at center dot.



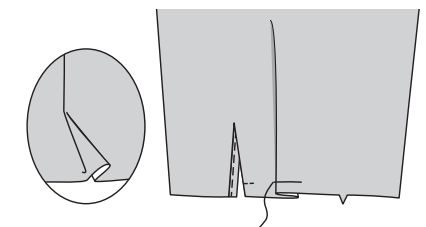
14. Press lap out, pressing seam toward lap. Pin pressed edge of lap to **OUTSIDE** slightly over stitching. Stitch close to pressed edge.



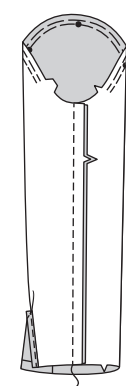
15. Turn front edge of lap to **INSIDE**; baste in place across lower edge. To keep lap in place, stitch diagonally across upper edge of lap as shown.



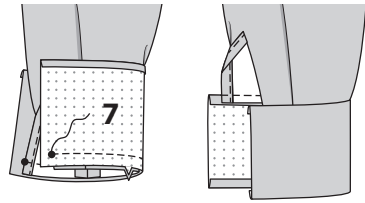
16. To make a soft pleat, on **OUTSIDE**, fold along solid line. Bring fold to broken line; pin. Baste across raw edge.



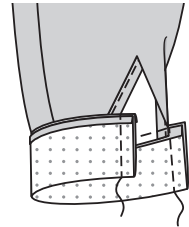
17. **EASE** top of sleeve between the notches. Stitch underarm edges together.



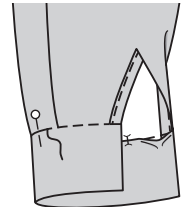
18. Press under 1/2" (1.3cm) on unnotched edge of CUFF (7). Trim to 1/4" (6mm).
With RIGHT sides together and raw edges even, pin sleeve to cuff, matching notches and placing opening edges at small dots. Baste. Stitch. Trim seam. Press seam toward cuff, pressing cuff out.



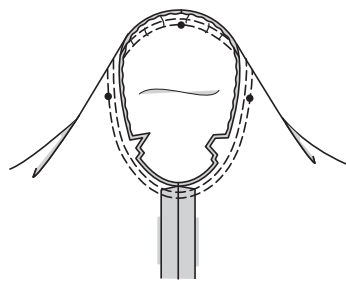
19. Fold cuff along foldline with RIGHT sides together. Stitch ends. Trim seam and corners.



20. Turn cuff; press. On INSIDE, pin pressed edge of cuff over seam, placing pins on OUTSIDE. On OUTSIDE, stitch in the ditch of the seam, catching in pressed edge of cuff facing on the INSIDE.

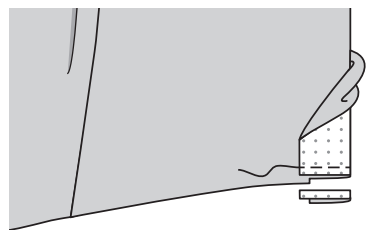


21. Turn sleeve RIGHT side out. Hold blouse WRONG side out with armhole toward you. With RIGHT sides together, pin sleeve to armhole edge with center small dot at shoulder seam, matching underarm seams, notches and remaining small dots. Pull up ease stitches to fit.
To distribute fullness evenly, slide fabric along bobbin threads until there are no puckers or tucks on the seam line. Baste. Stitch. Stitch again 1/8" (3mm) from first stitching. Trim seam below notches close to stitching. Press only the seam allowance, shrinking out fullness.

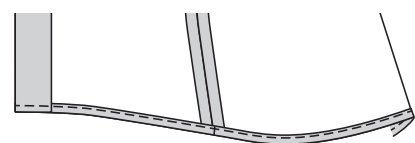
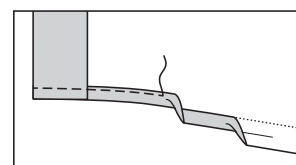


FINISHING

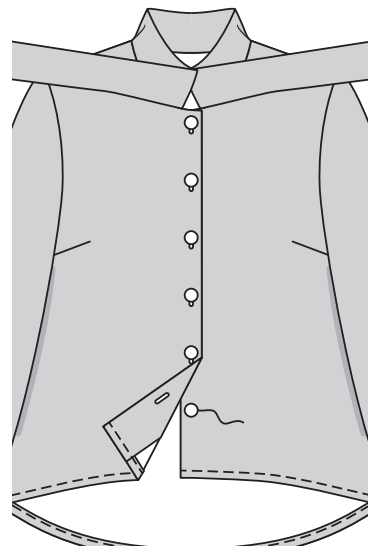
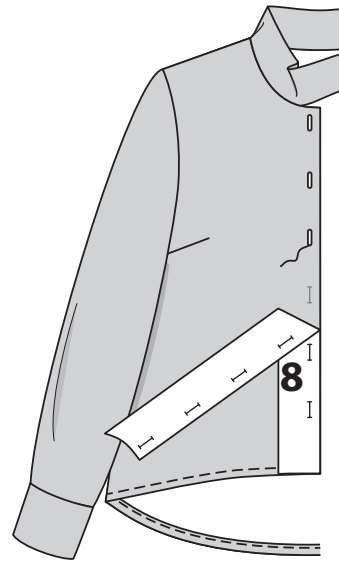
22. Turn front facing to OUTSIDE along foldline. Stitch 5/8" (1.5cm) from lower edge. Trim facing close to stitching. Trim blouse to within 5/8" (1.5cm) of inner edge of facing.



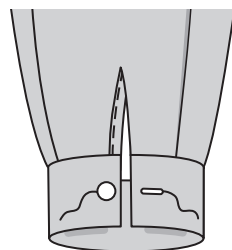
23. Turn facing to INSIDE; press, pressing up 5/8" (1.5cm) hem allowance. Press under raw edge 1/4" (6mm). Stitch hem in place starting at opening edge.



24. To mark buttonholes in RIGHT front, place BUTTONHOLE GUIDE (8) along finished edge of blouse, matching centers, as shown. Transfer markings. Make buttonholes at markings. Lap RIGHT front over LEFT, matching centers. Sew buttons under buttonholes.



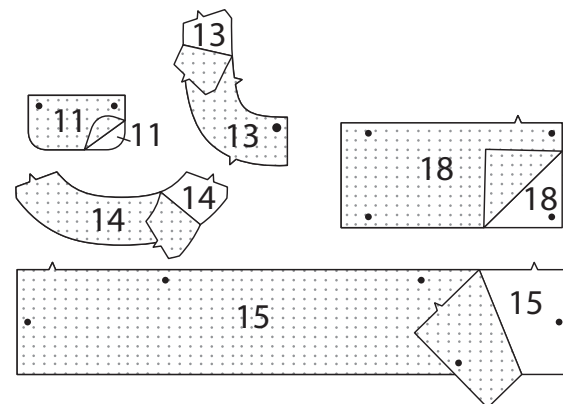
25. Make buttonhole on cuff at marking. Sew button under buttonhole at small dot.



JACKET B

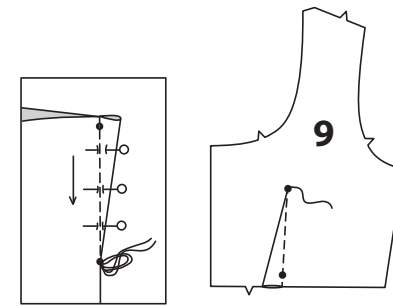
INTERFACING

1. Pin interfacing sections to WRONG side of FLAP (11), FRONT NECKBAND (13), BACK NECK BAND (14), LOWER BAND (15), and CUFF (18) sections.
Fuse interfacing in place following manufacturer's directions.



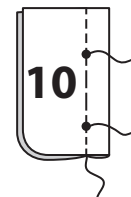
FRONT AND BACK

2. To make dart in FRONT (9), with RIGHT sides together, fold the fabric through the center of the dart, bringing broken lines and small dots together. On INSIDE, place pins at RIGHT angles to the broken lines. Stitch the dart from wide end to point. Press the dart flat along the stitching to "blend" the stitches, then press dart down.

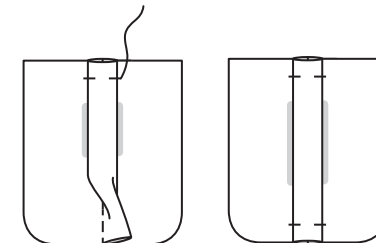


TIP – To prevent a "bubble" at the point, make the last few stitches right on the fold and leave the thread ends long enough to tie a knot. DO NOT back-stitch at the point.

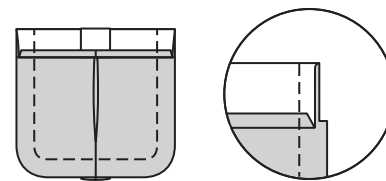
3. To make inverted pleat on POCKET (10), on INSIDE, bring solid and broken lines together, matching small dots. Stitch along broken lines to small dots. Baste along solid line between small dots.



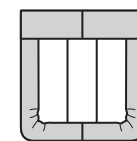
4. Press pleat flat bringing stitching to center. Baste across upper and lower edges. Remove solid line basting.



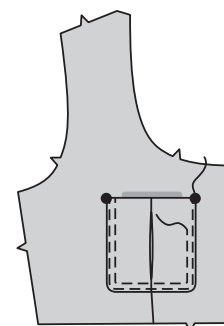
5. Press under 1/4" (6mm) on upper edge of pocket. Turn upper edge to OUTSIDE along fold line, forming facing. Stitch along seam line on raw edges. Trim seam allowance in the facing area to 1/4" (6mm).



6. Turn corners RIGHT side out, turning facing to the WRONG side; press, pressing under raw edges along stitching.



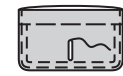
7. On OUTSIDE, pin pocket to front, matching large dots. Stitch pocket close to side and lower edges and 1/4" (6mm) from first stitching.



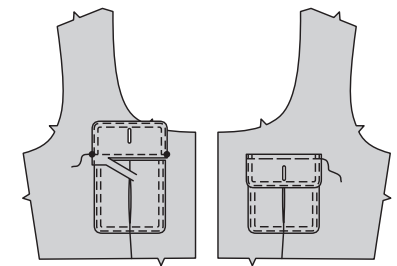
8. With RIGHT sides together, stitch facing to FLAP (11), leaving edge with small dots open. Trim seam and corners.



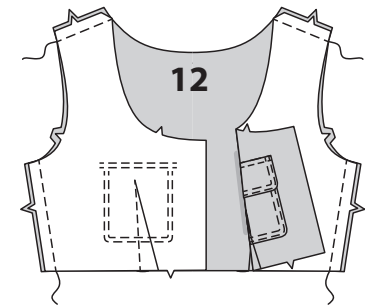
9. Turn flap; press. Machine-baste 5/8" (1.5cm) from raw edge. Stitch flap close to finished edge, and topstitch 1/4" (6mm) from first stitching, starting and ending 7/8" (2.2cm) from raw edge. Make buttonhole at marking.



10. On OUTSIDE, pin flap to front, placing basting along flap line, matching small dots, as shown. Stitch along basting. Trim close to stitching. Turn flap down; press. Stitch 1/4" (6mm) from upper edge.

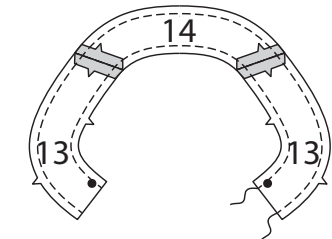


11. Make dart in BACK (12) in same manner as for front. Stitch front to back at side and shoulder edges.

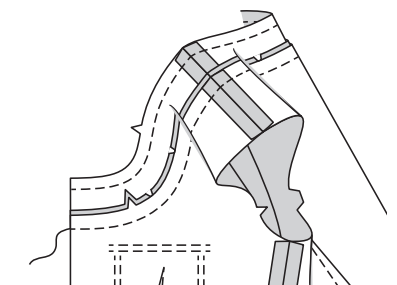


BANDS

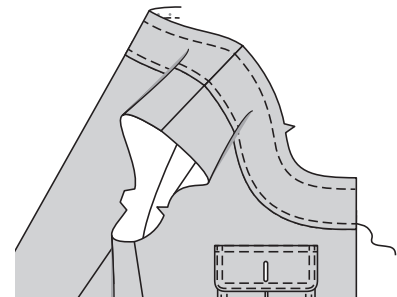
12. Stitch non-interfaced sections of FRONT NECKBAND (13 to BACK NECKBAND (14) at shoulder edges. Press open. Machine-stitch along seamline on upper and lower edges of neckband. For facing, stitch remaining interfaced sections in same manner as neckband.



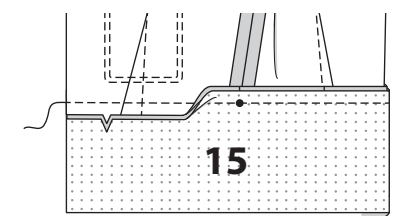
13. With RIGHT sides together and raw edges even. Pin neckband to front and back, matching seams and notches, clipping neck band to stitching, as necessary. Trim seam in layers. Press seam toward band.



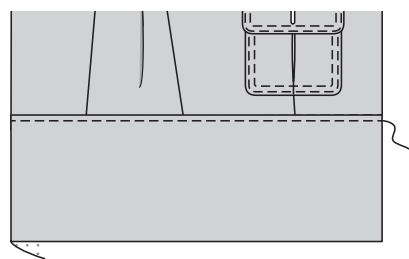
14. On OUTSIDE, topstitch band 1/4" (6mm) from seam.



15. With RIGHT sides together and raw edges even, pin upper edge of LOWER BAND (15) to lower edge of front and back, matching centers and notches, placing small dots at side seams. Stitch. Press seam toward band, pressing band out.

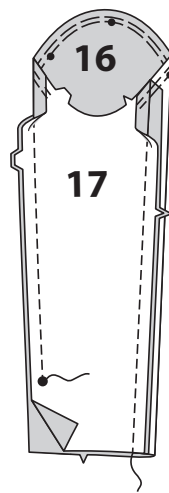


16. On OUTSIDE, topstitch band 1/4" (6mm) from seam.

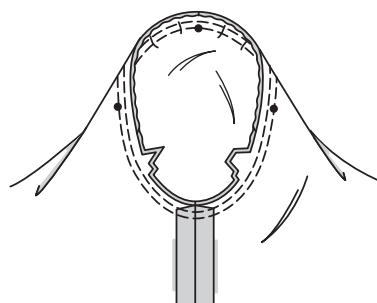


SLEEVE

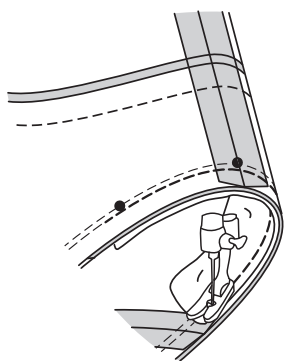
17. With RIGHT sides together and raw edges even, pin UPPER SLEEVE (16) to UNDER SLEEVE (17) along front (single notched) edge. Stitch. Pin upper sleeve to undersleeve along back edge. Stitch from armhole edge to large dot, backstitching at dot to reinforce the seam. EASE upper edge of sleeve between the notches.



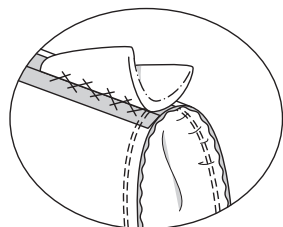
18. Turn sleeve RIGHT side out. Hold jacket WRONG side out with armhole toward you. With RIGHT sides together, pin sleeve to armhole edge with center small dot at shoulder seam and large dot at side seam, matching notches and remaining small dots. Pull up ease stitches to fit. To distribute fullness evenly, slide fabric along bobbin threads until there are no puckers or tucks on the seam line. Baste. Stitch. Stitch again 1/8" (3mm) from first stitching. Trim seam below notches close to stitching. Press only the seam allowance, shrinking out fullness.



19. Pin sleeve header to armhole on the INSIDE of sleeve, placing the center of header at shoulder seam, having raw edges even. Stitch 1/8" (3mm) from the armhole seam, having inner curve (sleeve side) facing up, as shown.

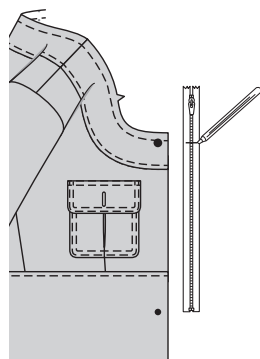


20. Try on jacket. Insert shoulder pad and adjust to fit until it looks right and feels comfortable. Pin in place. Remove garment. On INSIDE, catch-stitch pad to shoulder seam.

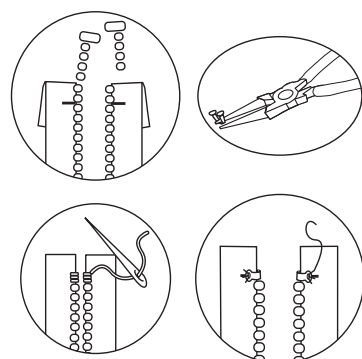


ZIPPER

21. To adjust the length of the Separating Zipper from the top, measure RIGHT front opening edge of jacket from large dot on front neckband to small dot on lower band, minus 1/4" (6mm), and mark the length on the zipper tape, measuring from the lower edge of the bottom stop.

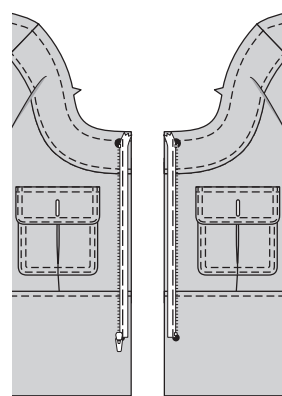


22. Cut off extra zipper 7/8" (2.2cm) above the mark with the zipper pull well below intended cut. Do not discard the pieces. Using pliers, remove the teeth above the shortening mark, pry top stops open and remove them from the cut-off pieces of zipper. Reinstall top stops by crimping them in place immediately above the last remaining tooth, or stitch new stops using heavy thread, or sew on new purchased stops.



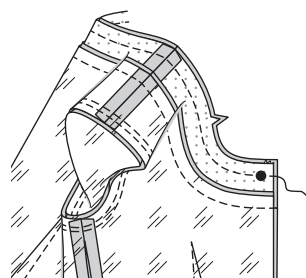
23. Separate zipper. On OUTSIDE, pin slider side of zipper face down onto RIGHT front opening edge, with top stop at large dot on neckband, and lower end of zipper at small dot on lower band; having zipper tape within the seam allowance and outer edge of zipper teeth a generous 1/8" (3mm) past seamline. Taper upper end of zipper tape at large dot into the seam allowance, as shown. Baste. On OUTSIDE, pin remaining side of zipper, face down on to the LEFT front opening edge in same manner. Make sure that both sides of tape are aligned. Baste. Using an adjustable zipper foot, stitch both sides of zipper in place 5/8" (1.5cm) from the front edge.

TIP - To avoid bumpy stitching around the tab and slider, stop stitching just before you get to the slider. Leaving the needle in the fabric, raise the presser foot and pull the slider down below the needle. Lower the presser foot and continue stitching.

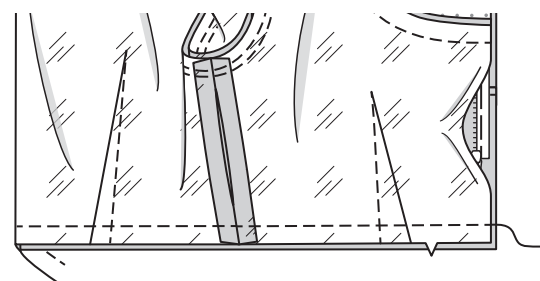


LINING

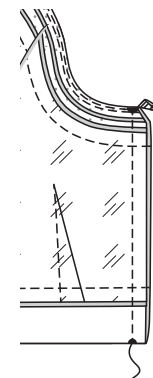
24. Make darts in front and back lining sections, and stitch front lining, back lining, neckband facing, and sleeve lining sections together in the same manner as jacket, leaving an opening in one side seam for turning. With RIGHT sides together and raw edges even, pin facing/lining to jacket along neck edge, matching centers and seams. Stitch neck edge. Trim seam; clip curves.



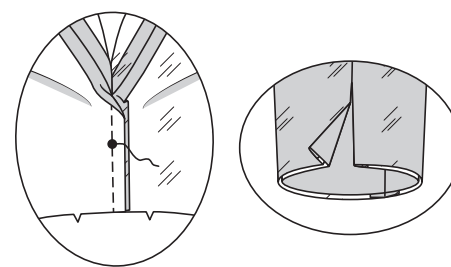
25. UNDERSTITCH the facing. With RIGHT sides together and raw edges even, pin jacket lining to remaining edge of lower band, matching centers back, disregarding notches. Stitch. Press seam toward lining.



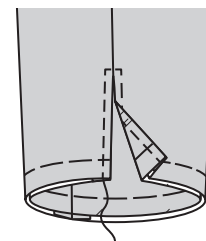
26. With RIGHT sides together, and lower band folded along foldline, pin lining to jacket along front edges. Using an adjustable zipper foot, stitch 5/8" (1.5cm) from front edge, keeping zipper teeth free. Trim corners.



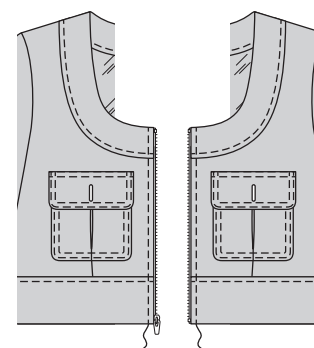
27. With RIGHT sides together and raw edges even, pin sleeve edges together along slit edges, matching seams. Stitch along seamlines, breaking stitching at large dot.



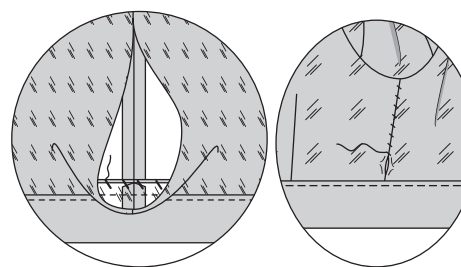
28. Turn jacket and lining RIGHT side out through opening in lining. Press. Slip sleeves in place. Baste lower edge of sleeve and lining together. Topstitch slit edges 1/4" (6mm) from finished edges, squaring stitching at opening end.



29. Topstitch jacket 1/4" (6mm) from front edge.

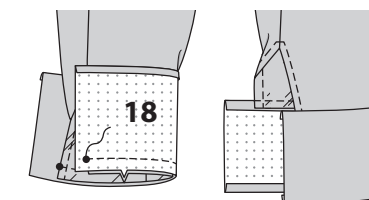


30. On INSIDE through opening in lining, hand-tack seam allowances of neckband to neck band facing, and lower band to lower band facing. Then, slipstitch opening in lining closed.

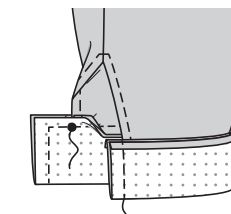


CUFF

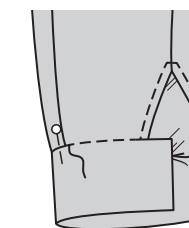
31. Press under 1/2" (1.3cm) on unnotched edge of CUFF (18). With RIGHT sides together and raw edges even, pin cuff to sleeve, matching small dots and notches. Stitch. Press seam toward cuff, pressing cuff out.



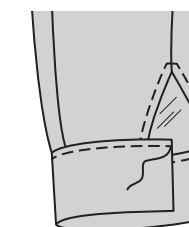
32. Open out seam allowance at extension. Fold cuff along fold line with RIGHT sides together. Stitch end and extension to small dot. Trim seams and corners.



33. Turn cuff to INSIDE; press, pressing out corners on extension. On INSIDE, pin pressed edge of facing over seam, placing pins on OUTSIDE. On OUTSIDE, stitch in the ditch of the seam, catching in pressed edge of facing on the INSIDE.

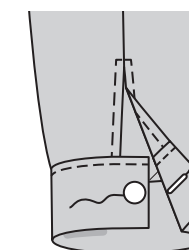


34. On OUTSIDE, topstitch cuff 1/4" (6mm) from seam.



FINISHING

35. Make buttonhole on cuff at marking. Sew button to cuff at small dot.



36. Sew buttons to pockets under buttonholes.

