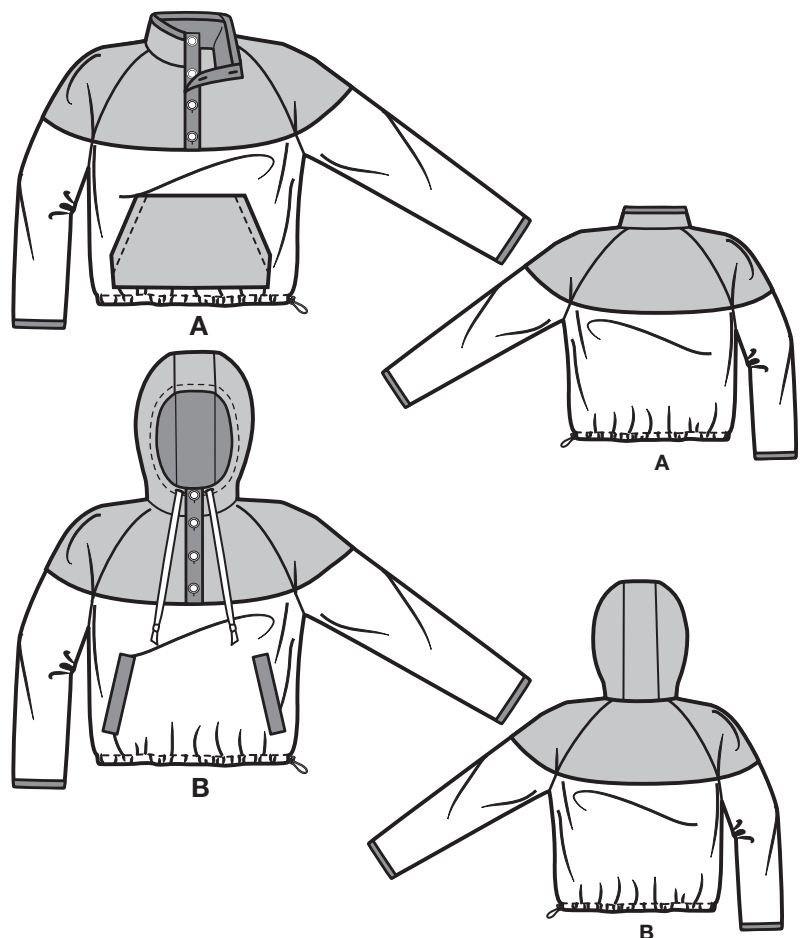
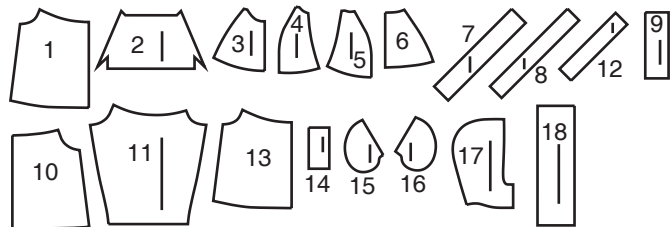


@_donnyQ



18 PATTERN PIECES



- 1 Lower Front-A
- 2 Pocket-A
- 3 Upper Front-A,B
- 4 Upper Sleeve Front-A,B
- 5 Upper Sleeve Back-A,B
- 6 Upper Back-A,B
- 7 Collar-A
- 8 Collar Binding-A
- 9 Placket-A,B
- 10 Lower Back-A,B
- 11 Lower Sleeve-A,B
- 12 Sleeve Binding-A,B
- 13 Lower Front-B
- 14 Welt-B
- 15 Pocket Facing-B
- 16 Pocket-B
- 17 Hood Side-B
- 18 Hood Center-B

PATTERN MARKINGS

- GRAINLINE:** Place on straight grain of fabric, parallel to selvage or fold.
- FOLDLINE:** Place line on fold of fabric.
- BUTTONHOLE MARKING:** Indicates exact length and placement of buttonholes.
- BUTTON MARKING:** Indicates button placement.
- NOTCHES AND SYMBOLS:** For matching seams and construction details.
- Indicates the Bustline, Waistline, Hip and/or Biceps. Measurements refer to circumference of Finished Garment (Body Measurement + Wearing Ease + Design Ease). Adjust pattern if necessary. The measurement excludes pleats, tucks, darts and seam allowances.
- SEAM ALLOWANCE:** 5/8" (1.5cm) included unless otherwise indicated, but not printed on tissue.

ADJUST IF NECESSARY

- Lengthen or Shorten at adjustment lines (==) or where indicated on pattern. If substantial length is added, you may need to purchase additional fabric.
- TO SHORTEN:** Crease along adjustment line. Make a fold half the amount needed. Tape in place.
- TO LENGTHEN:** Slash between adjustment lines. Spread amount as needed, keeping edges parallel. Tape over paper.
- When Alteration lines are not on tissue, lengthen or shorten at lower edge.

CUTTING AND MARKING

- SHRINK FABRIC** if not labeled pre-shrunk. Press.
- CIRCLE LAYOUT** for View, Size, Fabric Width.
- Use **WITH NAP** layout for fabrics with one-way designs, nap, pile or surface shading. Because most knits have surface shading, a with nap layout is used.
- For **DOUBLE THICKNESS (WITH FOLD)** - fold fabric with right sides together.
- * DOUBLE THICKNESS (WITHOUT FOLD)** - For fabrics with nap, fold fabric crosswise, right sides together. Mark as shown. Cut along crosswise fold of fabric (A). Turn upper layer 180° so arrows go in same direction and place over lower layer, right sides together (B).
- For **SINGLE THICKNESS** - place fabric right side up. (For Fur Pile fabrics, place pile side down.)
- ★ Cut other pieces first, allowing enough fabric to cut this piece. Open fabric. For "Cut 1" pieces, cut piece once on single layer of fabric with piece face up on right side of fabric.
- Pattern may have cutting lines for several sizes. Select the proper cutting line or pattern pieces for your size.
- Before **CUTTING** place all pieces on fabric according to layout. Pin. (Layouts show approximate position of pattern pieces; position may vary according to your pattern size.) Cut **ACCURATELY**, cutting notches outward.
- Before removing pattern, **TRANSFER MARKINGS** and lines of construction to Wrong Side of fabric, using the Pin and Chalk Pencil method or Tracing Paper and Dressmaker Wheel. Markings needed on right side of fabric should be thread traced.
- NOTE:** Broken-line boxes (a! b! c!) in layouts represent pieces cut by measurements provided.

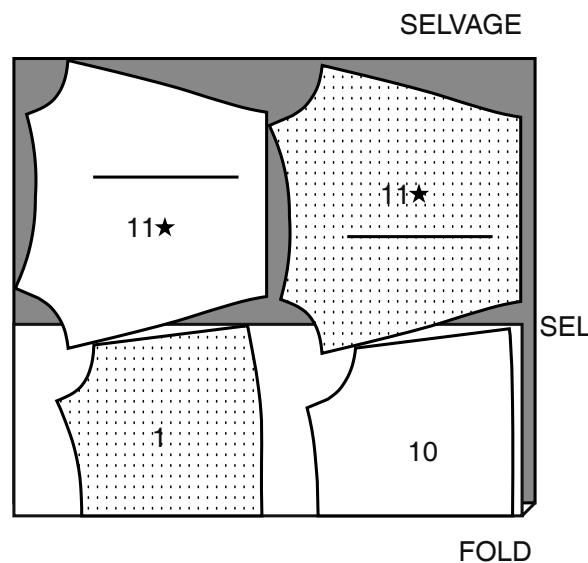
CUTTING LAYOUTS

RIGHT SIDE OF PATTERN	WRONG SIDE OF PATTERN	RIGHT SIDE OF FABRIC	WRONG SIDE OF FABRIC

JACKET A

PIECES 1 10 11

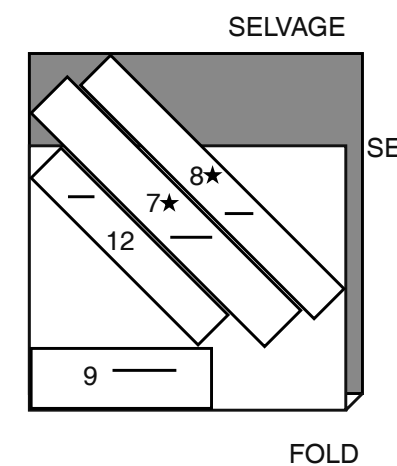
60" (150CM) WITH NAP ALL SIZES



CONTRAST 2A (COLLAR, PLACKET, SLEEVE BINDING, NECK BINDING)

PIECES 7 8 9 12

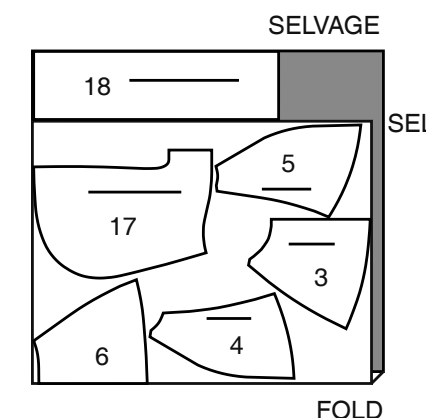
45"/60" (115CM/150CM) WITH NAP ALL SIZES



CONTRAST 1B (FRONT AND BACK UPPER BODICE, HOOD)

PIECES 3 4 5 6 17 18

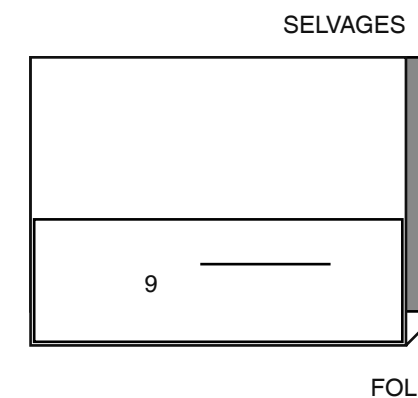
60" (150CM) WITH NAP ALL SIZES



INTERFACING A

PIECES 9

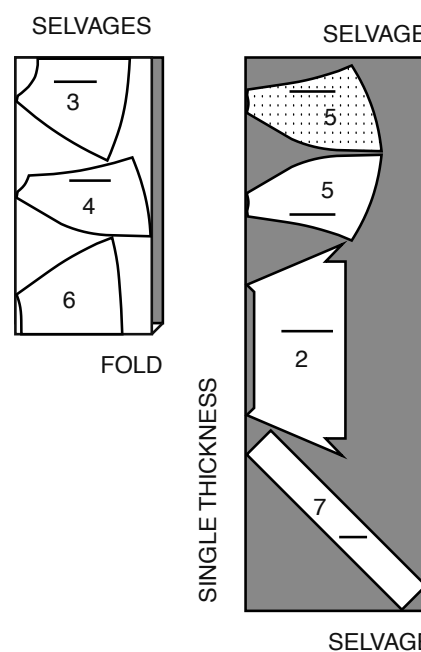
20" (51CM) ALL SIZES



CONTRAST 1A (COLLAR, POCKET, FRONT AND BACK, UPPER BODICE)

PIECES 2 3 4 5 6 7

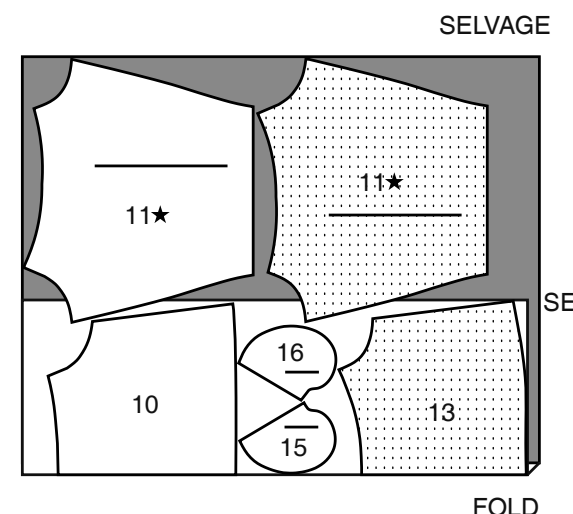
60" (150CM) WITH NAP ALL SIZES



JACKET B

PIECES 10 11 13 15 16

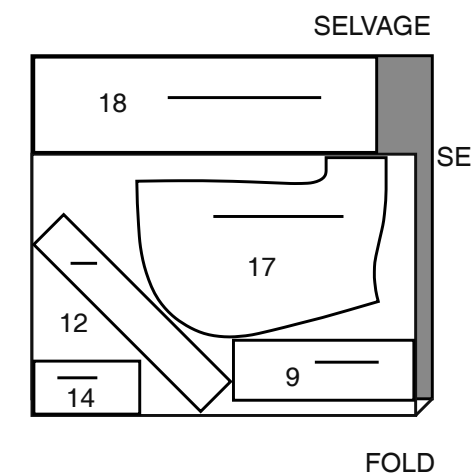
60" (150CM) WITH NAP ALL SIZES



CONTRAST 2B (PLACKET, POCKET WELT, HOOD LINING, SLEEVE BINDING)

PIECES 9 12 14 17 18

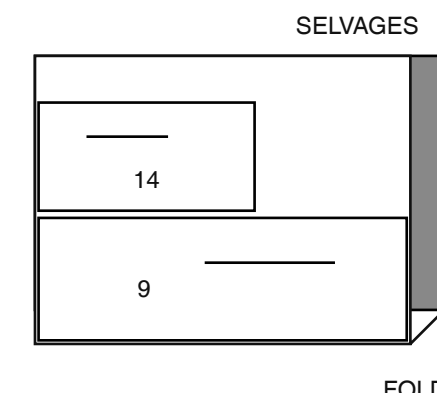
45"/60" (115CM/150CM) WITH NAP ALL SIZES



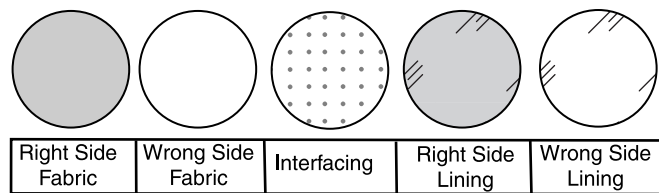
INTERFACING B

PIECES 9 14

20" (51CM) ALL SIZES

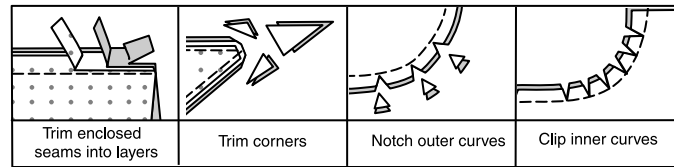


SEWING INFORMATION
FABRIC KEY



SEAM ALLOWANCES

Use 5/8" (1.5cm) seam allowances unless otherwise indicated.



PIN AND FIT

Pin or baste seams, **RIGHT SIDE TOGETHER**, matching notches. Fit garment before stitching major seams.

PRESS

Press seam allowances flat; then open unless otherwise stated. Clip where necessary so they lie flat.

GLOSSARY

Sewing methods in **BOLD TYPE** have Sewing Tutorial Video available. Scan QR CODE to watch videos:

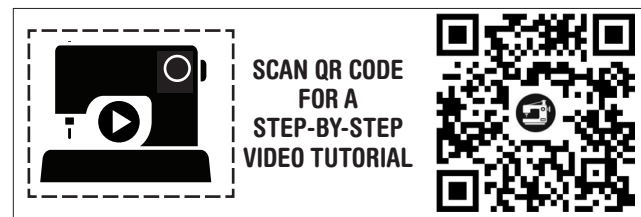
EDGESTITCH - Stitch close to finished edge or seam.

FINISH - see **Seams: "how to finish seam allowances"** video

REINFORCE - Stitch along seamline where indicated in sewing instructions, using small machine stitches.

SLIPSTITCH - Slide needle through a folded edge, then pick up a thread of underneath fabric.

STAYSTITCH - Stitch 1/2" (1.3cm) from seamline in seam.



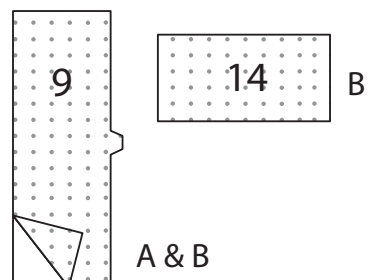
@_donnyQ

JACKET A, B

NOTE: Under each sub-heading, view A will be shown unless otherwise indicated.

INTERFACING

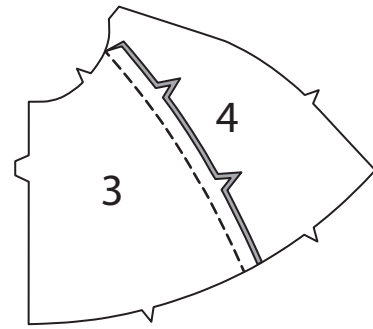
1. Pin **INTERFACING** to wrong side of each matching **FABRIC** section. Fuse, following manufacturer's instructions.



UPPER FRONT AND BACK

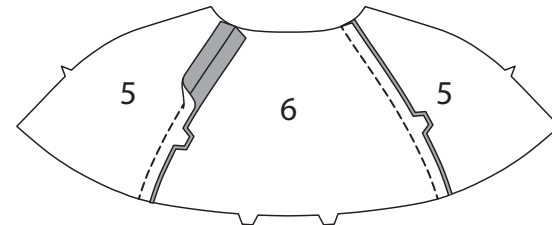
2. With **RIGHT** sides together, pin **UPPER SLEEVE FRONT** (4) to side edge of **UPPER FRONT** (3), matching notches. Press seam open.

TIP: For woven fabrics, **STAYSTITCH** side edge of upper sleeve front between notches. Clipping to stitching where necessary when applying.



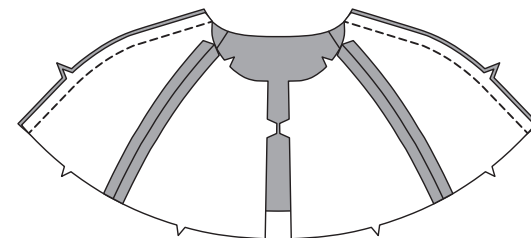
3. With **RIGHT** sides together, pin **UPPER SLEEVE BACK** (5) to side edge of **UPPER BACK** (6), matching notches. Stitch. Press seam open.

TIP: For woven fabrics, **STAYSTITCH** side edge of upper sleeve back between notches. Clipping to stitching where necessary when applying.



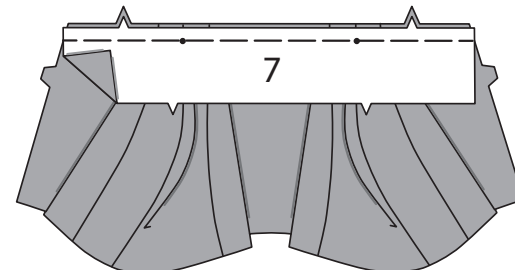
4. With **RIGHT** sides together, stitch upper front and back together at shoulder seams.

TIP: For woven fabrics- **STAYSTITCH** neck edge of garment.

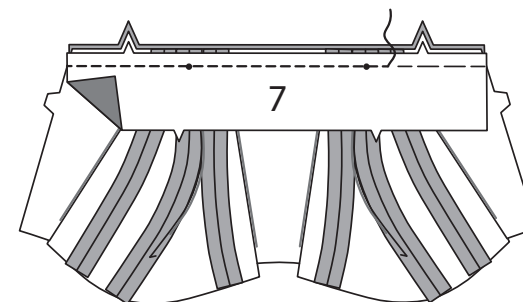


COLLAR A

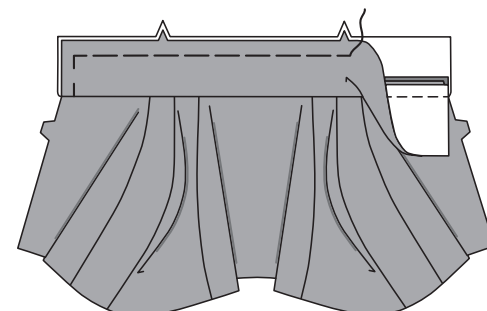
5. With **RIGHT** sides together, pin **COLLAR** (7) to neck edge of garment, matching centers and notches, stretching band to fit. Clip to stay-stitching as necessary for woven fabrics. Baste.



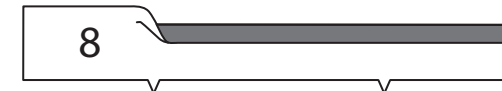
6. On **INSIDE**, pin **RIGHT** side of collar facing to **WRONG** side of neck edge, matching centers and notches, stretching band to fit. Baste. Stitch through all thicknesses.



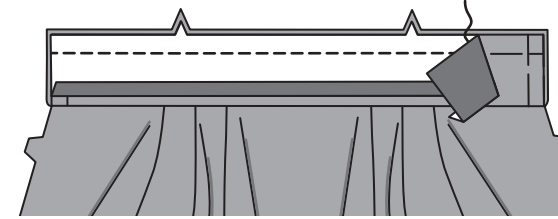
7. Press collar and collar facing up over seam. Baste raw edges together.



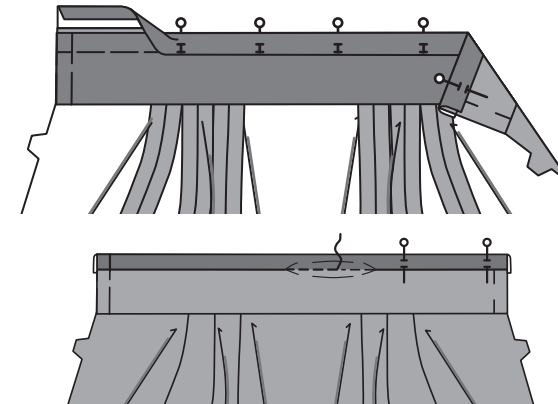
8. Press under 1/2" (1.3cm) on unnotched edge of **COLLAR BINDING** (8).



9. On **OUTSIDE**, pin **RIGHT** side of binding to neck edge matching notches. Stitch in a 3/4" (2cm) seam. Trim seam.



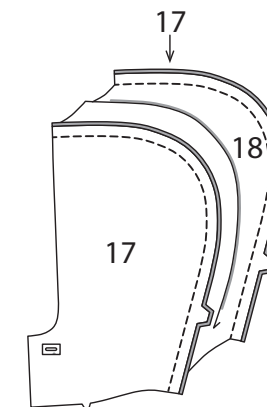
10. Press seam toward binding, pressing binding out. Pin pressed edge of binding over seam, placing pins on **OUTSIDE**. On **OUTSIDE**, stitch in the ditch or "groove" of seam, catching in pressed edge on **INSIDE**. Baste front edges together.



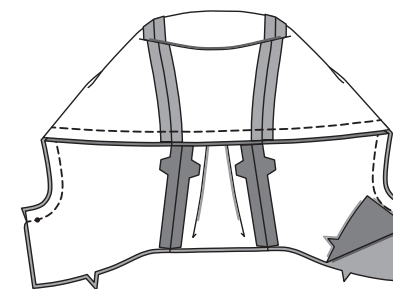
HOOD B

11. With **RIGHT** sides together, pin **HOOD SIDE** (17) to each side of **HOOD CENTER** (18), matching notches. Stitch. Press seam open. Make buttonholes in hood at markings. Reinforce buttonholes with small piece of interfacing for stability.

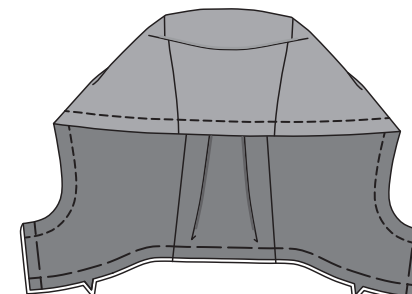
TIP: For woven fabrics, machine-stitch 1/2" (1.3cm) from side edges of hood center section before stitching seams. Clip to stitching where necessary when stitching seams.



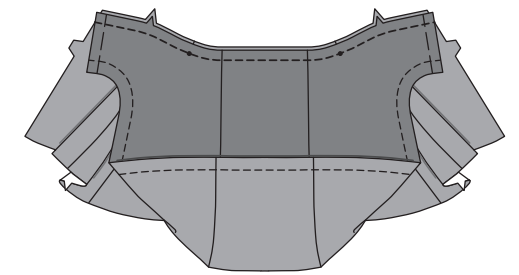
12. Construct hood facing in same manner as hood, omitting buttonholes. With **RIGHT** sides together, stitch hood facing to hood along front edge, leaving edge below small dot open. Trim seam.



13. Turn hood **RIGHT** side out. Press. Baste raw edges together. Stitch 3/4" (2cm) from front edge of hood, forming casing.

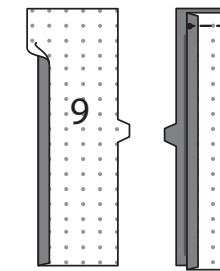


14. On **OUTSIDE**, pin hood to neck edge centers, placing small dots at shoulder seam, having raw edges even. Clip to stay-stitching as necessary for woven fabrics. Baste. Stitch. Press seam down.

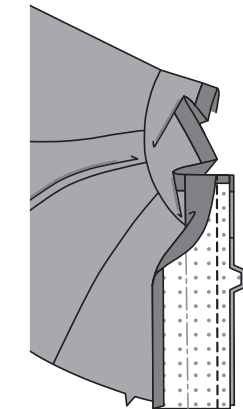


FRONT PLACKET

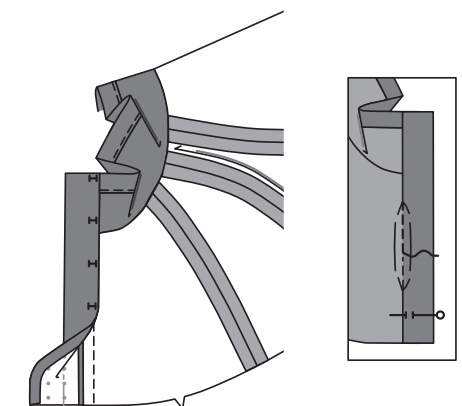
15. Press under 1/2" (1.3cm) on unnotched edge of **PLACKET** (9). Fold placket in half along fold line, with **RIGHT** sides together. Press. Stitch edge with small dots. Trim seam and corners.



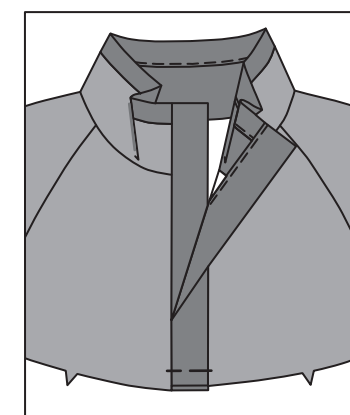
16. Turn band **RIGHT** side out. Press. With **RIGHT** sides together, pin placket to **RIGHT** front matching notches and small dots. Stitch, keeping pressed edge of placket free. Trim seam.



17. Press seam toward binding, pressing binding out. Pin pressed edge of binding over seam, placing pins on **OUTSIDE**. On **OUTSIDE**, stitch in the ditch or "groove" of seam, catching in pressed edge on **INSIDE**.



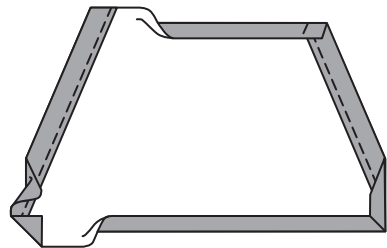
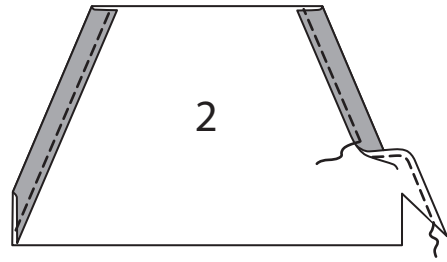
18. Apply placket to **LEFT** front in same manner as **RIGHT** side. On **OUTSIDE**, lap **LEFT** front over **RIGHT** front matching centers. Baste lower edges together.



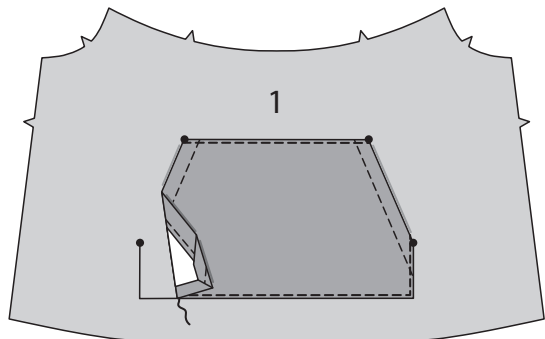
LOWER FRONT AND BACK

19. VIEW A-

FINISH side extension edges of POCKET (2). Press side edges to **INSIDE** along fold lines. Stitch 1/4"(6mm) from inner edge. Press upper, lower and edges to **INSIDE**, along seam line, folding in fullness at corners, as shown.

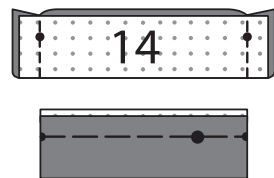


20. On **OUTSIDE**, pin pocket to **LOWER FRONT** (1) along placement lines, matching large and small dots. **EDGESTITCH** upper, lower and side edges of pocket, leaving pressed edges open between small dots.

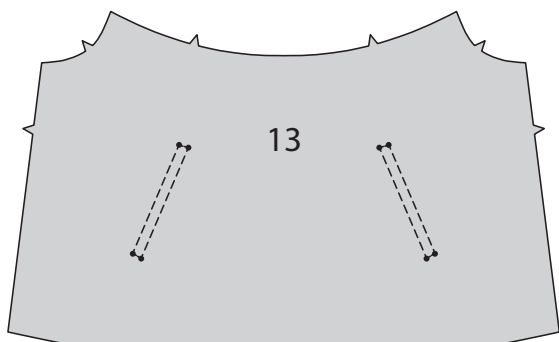


21. VIEW B-

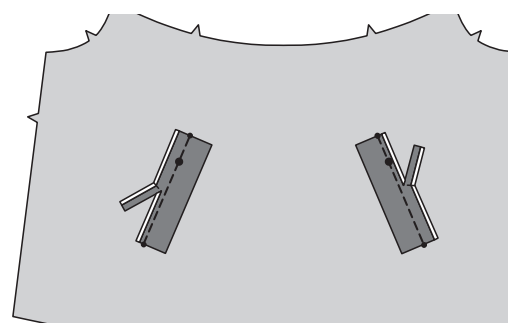
Fold **WELT** (14) in half, lengthwise, with **RIGHT** sides together. Stitch ends. Trim seams and corners. Turn welt; press. Machine-baste raw edges together.



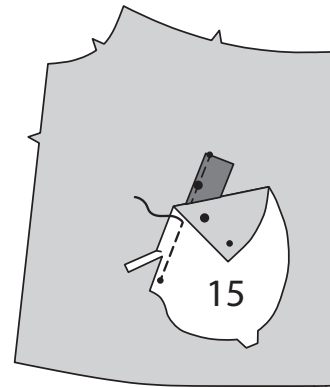
22. To reinforce **LOWER FRONT** (13), stitch along stitching lines, stitching through small dots, as shown.



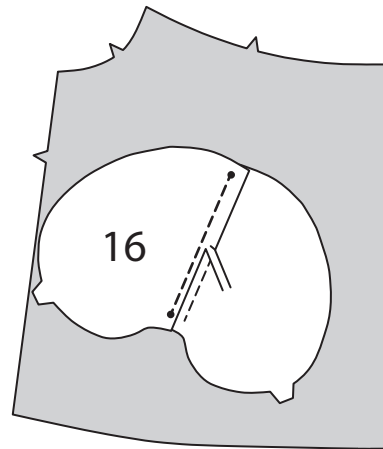
23. On **OUTSIDE**, baste welt to front placing basting along lower stitching line, matching small and large dots, as shown. Stitch 5/8" (1.5cm) from raw edge of welt between small dots at corners. Trim raw edge to a scant 1/4" (6mm).



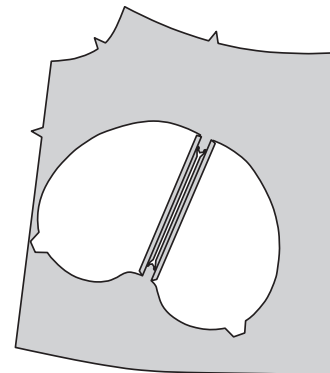
24. With right sides together, pin **POCKET FACING** (15) to front, (over welt), placing seamline along stitching line, matching small and large dots. Baste. Stitch between small dots. Trim pocket seam allowance to a scant 1/4"(6mm), being careful not to cut front.



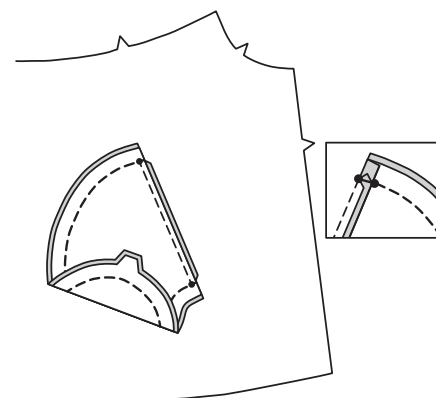
25. With right sides together, pin **POCKET** (16) to front, placing seamline along upper stitching line. Baste. Stitch between small dots. Trim pocket seam allowance to a scant 1/4"(6mm), being careful not to cut front.



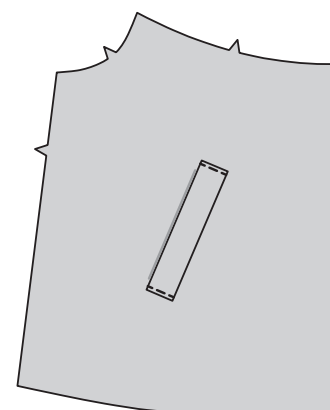
26. Slash along line between stitching, clipping diagonally to small dots.



27. Turn pocket and triangular ends to **INSIDE**. Press. Stitch pocket edges together, keeping front free, catching in clipped corners.

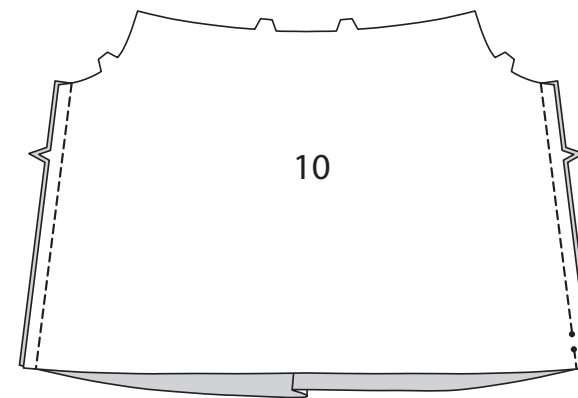


28. On **OUTSIDE**, press welt up, toward pocket opening. **EDGESTITCH** or **SLIPSTITCH** ends in place.

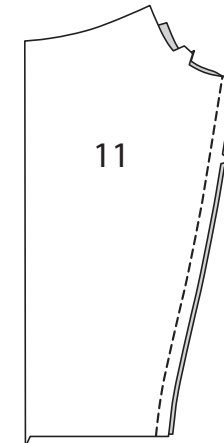


29. VIEW A, B-

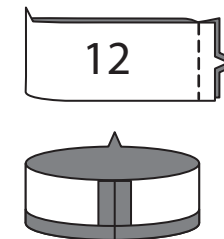
With **RIGHT** sides together, stitch lower front to **LOWER BACK** (10) at sides, leaving **LEFT** side seam open between small dots.



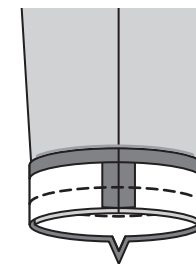
30. With **RIGHT** sides together, stitch underarm seam of **LOWER SLEEVE** (11).



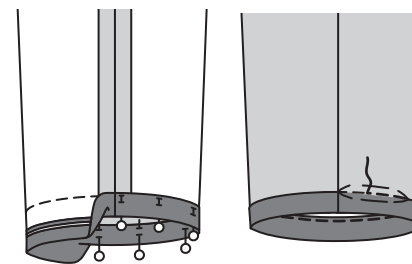
31. Stitch ends of **SLEEVE BINDING** (12). Press under 5/8"(1.5cm) on unnotched edge of binding.



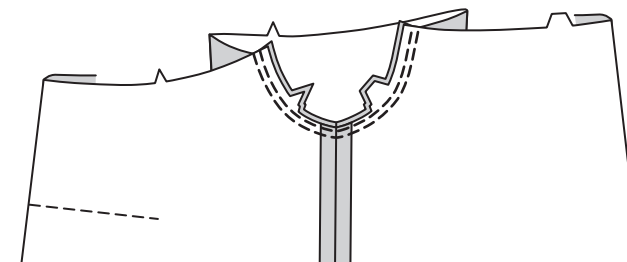
32. With **RIGHT** sides together, pin binding to lower edge of sleeve matching seams and notches. Stitch in a 3/4"(2cm) seam. Trim seam.



33. Press seam toward binding, pressing binding out. Pin pressed edge of binding over seam, placing pins on **OUTSIDE**. On **OUTSIDE**, stitch in the ditch or "groove" of seam, catching in pressed edge on **INSIDE**.

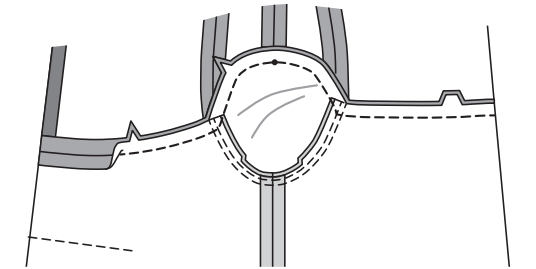


34. With **RIGHT** sides together, pin sleeve to armhole edges of front and back, matching notches. Stitch. Press seam open.



35. With **RIGHT** sides together, pin lower garment to upper garment matching notches, clipping to stay-stitching as necessary for woven fabrics. Baste. Stitch. Press seam open.

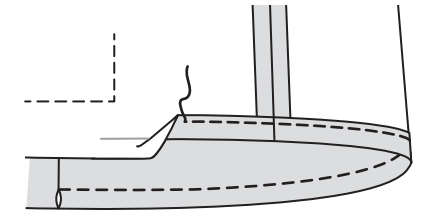
TIP: For woven fabrics, **STAYSTITCH** upper edge of lower front and back before stitching seams.



FINISHING

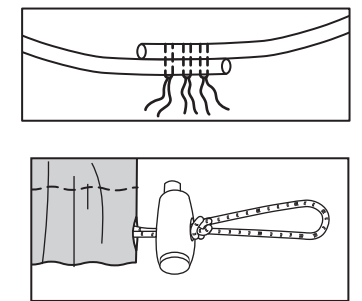
36. Press under 1"(2.5cm) on lower edge of jacket, to **INSIDE**. Stitch 1/4"(6mm) from raw edge.

TIP: **FINISH** lower edge of jacket if using woven fabrics.

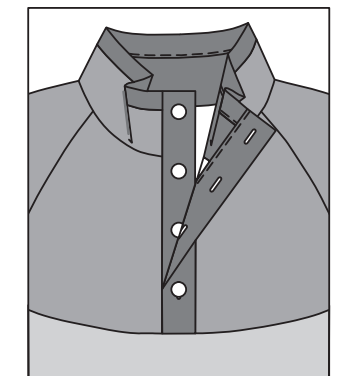


37. Cut one piece of elastic cord measuring 90" (228.6cm). Insert one end cord through casing at **LEFT** side seam and then in and out of stopper, forming a loop.

Lap ends of cord for about 1/2" (1.3cm) on each side of center and hand-sew together. Redistribute cord to conceal ends. Knot end of cord above stopper.



38. Make buttonholes in **LEFT** front at markings. Lap **LEFT** front over **RIGHT** front. Hand-sew buttons under buttonholes.



39. **VIEW B-** Cut a piece of twill tape the measurement of hood front plus 24" (61cm). Feed twill tape through buttonhole opening in hood front, having ends extend evenly. Knot ends.

