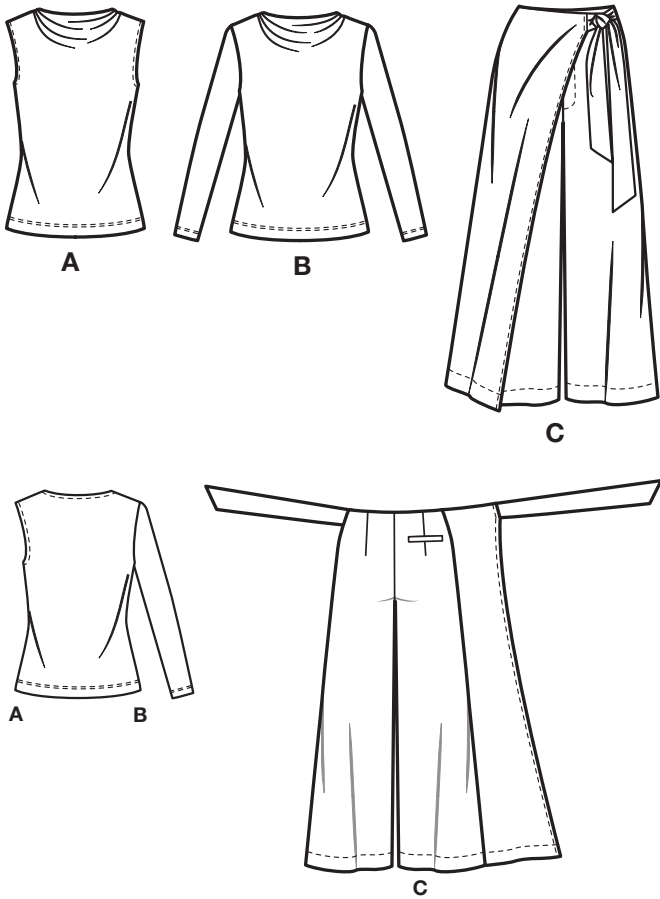


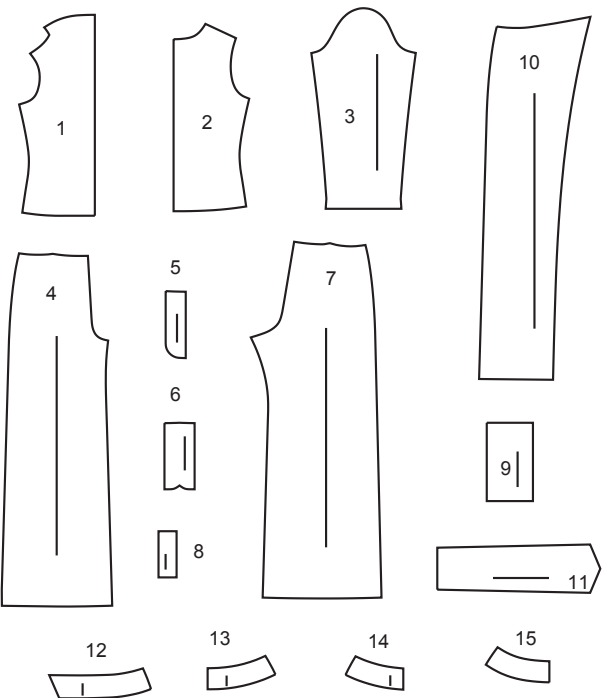
SCAN QR CODE
FOR A
STEP-BY-STEP
VIDEO TUTORIAL



@sewbakemake

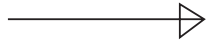


15 PATTERN PIECES

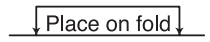


- | | |
|-----------------------|---------------------------|
| 1 FRONT - A,B | 9 BACK POCKET - C |
| 2 BACK - A,B | 10 WRAP - C |
| 3 SLEEVE - B | 11 TIE END - C |
| 4 FRONT - C | 12 FACING - C |
| 5 LEFT FLY FACING - C | 13 RIGHT FRONT FACING - C |
| 6 RIGHT FLY - C | 14 LEFT FRONT FACING - C |
| 7 BACK - C | 15 BACK FACING - C |
| 8 WELT - C | |

PATTERN MARKINGS



GRAINLINE: Place on straight grain of fabric, parallel to selvage or fold.



FOLDLINE: Place line on fold of fabric.



BUTTONHOLE MARKING: Indicates exact length and placement of buttonholes.



BUTTON MARKING: Indicates button placement.



NOTCHES AND SYMBOLS: For matching seams and construction details.



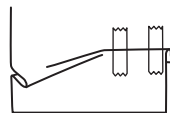
Indicates the Bustline, Waistline, Hip and/or Biceps. Measurements refer to circumference of Finished Garment (Body Measurement + Wearing Ease + Design Ease). Adjust pattern if necessary. The measurement excludes pleats, tucks, darts and seam allowances.

SEAM ALLOWANCE: 5/8" (1.5cm) included unless otherwise indicated, but not printed on tissue.

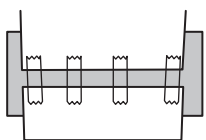
ADJUST IF NECESSARY

Lengthen or Shorten at adjustment lines (==) or where indicated on pattern. If substantial length is added, you may need to purchase additional fabric.

TO SHORTEN: Crease along adjustment line. Make a fold half the amount needed. Tape in place.



TO LENGTHEN: Slash between adjustment lines. Spread amount as needed, keeping edges parallel. Tape over paper.



When Alteration lines are not on tissue, lengthen or shorten at lower edge.

CUTTING AND MARKING

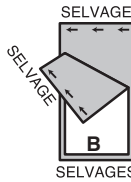
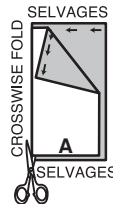
SHRINK FABRIC if not labeled pre-shrunk. Press.

CIRCLE LAYOUT for View, Size, Fabric Width.

Use **WITH NAP** layout for fabrics with one-way designs, nap, pile or surface shading. Because most knits have surface shading, a with nap layout is used.

For **DOUBLE THICKNESS (WITH FOLD)** - fold fabric with right sides together.

*** DOUBLE THICKNESS (WITHOUT FOLD)** - For fabrics with nap, fold fabric crosswise, right sides together. Mark as shown. Cut along crosswise fold of fabric (A). Turn upper layer 180° so arrows go in same direction and place over lower layer, right sides together (B).



For **SINGLE THICKNESS** - place fabric right side up. (For Fur Pile fabrics, place pile side down.)

★ Cut other pieces first, allowing enough fabric to cut this piece. Open fabric. For "Cut 1" pieces, cut piece once on single layer of fabric with piece face up on right side of fabric.

Pattern may have cutting lines for several sizes. Select the proper cutting line or pattern pieces for your size.

Before **CUTTING** place all pieces on fabric according to layout. Pin. (**Layouts show approximate position of pattern pieces; position may vary according to your pattern size.**) Cut **ACCURATELY**, cutting notches outward.

Before removing pattern, **TRANSFER MARKINGS** and lines of construction to Wrong Side of fabric, using the Pin and Chalk Pencil method or Tracing Paper and Dressmaker Wheel. Markings needed on right side of fabric should be thread traced.

NOTE: Broken-line boxes (a! b! c!) in layouts represent pieces cut by measurements provided.

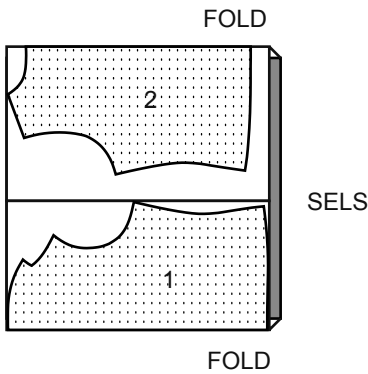
CUTTING LAYOUTS

A,B VIEWS: SIZES FOR STRETCH KNITS ONLY

TOP A

USE PIECES: 1 2

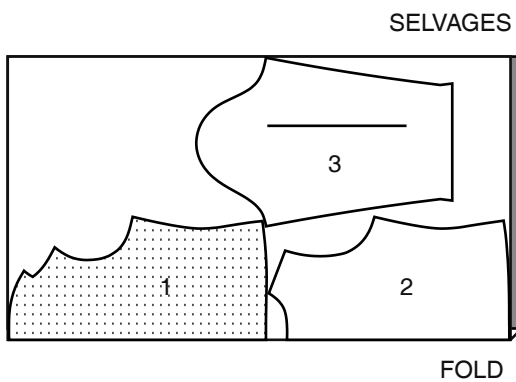
60" (150 CM)
WITH NAP
ALL SIZES



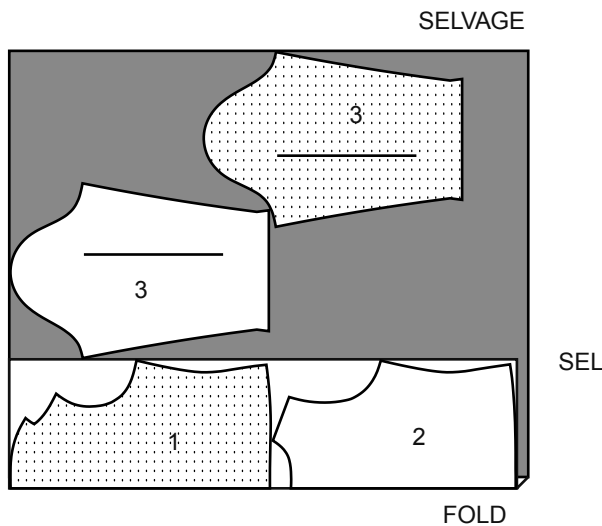
TOP B

USE PIECES: 1 2 3

60" (150 CM)
WITH NAP
SIZES 8 10 12 14 16 18 20 22 24



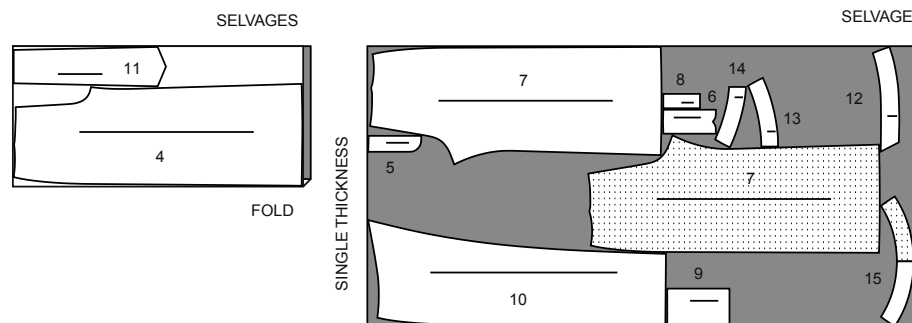
60" (150 CM)
WITH NAP
SIZES 26



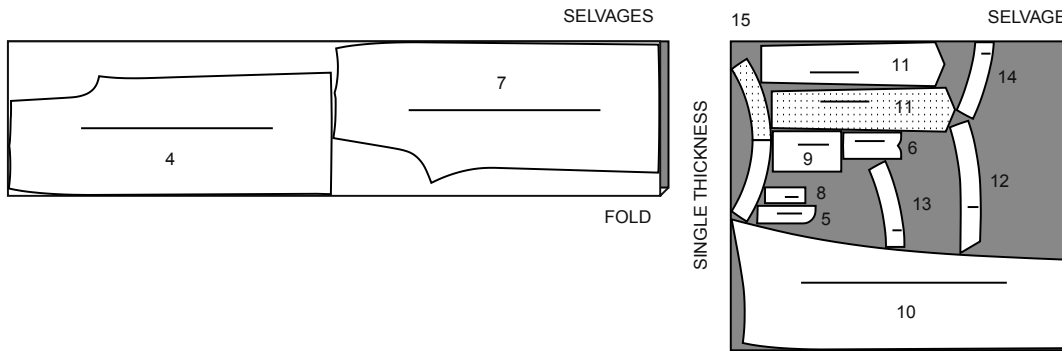
TROUSERS C

USE PIECES: 4 5 6 7 8 9 10 11 12 13 14 15

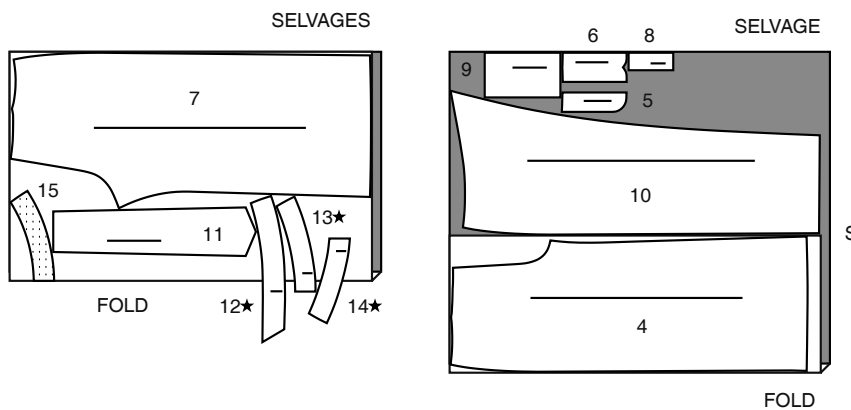
45" (115 CM)
WITH NAP
SIZES 8 10 12 14 16 18 20



45" (115 CM)
WITH NAP
SIZES 22 24 26



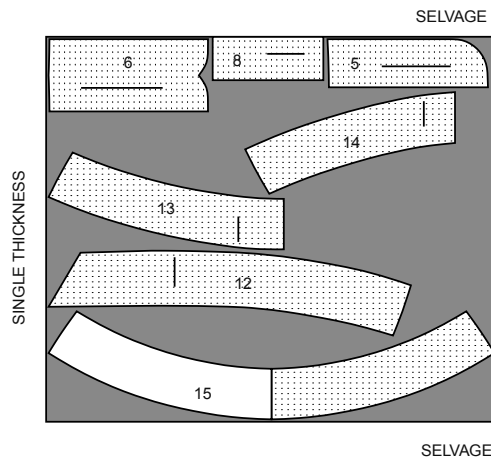
60" (150 CM)
WITH NAP
ALL SIZES



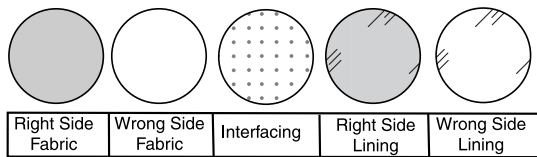
INTERFACING

USE PIECES: 5 6 8 12 13 14 15

20" (51 CM)
ALL SIZES

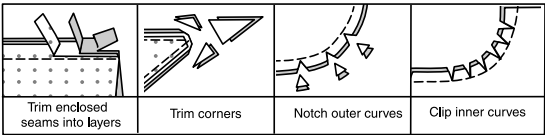


SEWING INFORMATION
FABRIC KEY



SEAM ALLOWANCES

Use 5/8" (1.5cm) seam allowances unless otherwise indicated.



PIN AND FIT

Pin or baste seams, **RIGHT SIDE TOGETHER**, matching notches. Fit garment before stitching major seams.

PRESS

Press seam allowances flat; then open unless otherwise stated. Clip where necessary so they lie flat.

GLOSSARY

Sewing terms appearing in **BOLD** type in sewing instructions are explained below.

DART- To make dart, with **RIGHT** sides together, fold the fabric through the center of the dart, bringing broken lines and small dots together. On **INSIDE**, place pins at **RIGHT** angles to the broken lines. Stitch the dart from wide end to point.

EASESTITCH - Stitch along seamline, using long machine stitches. Pull thread ends when adjusting to fit.

NOTE: For sleeve caps, make a second row of long machine stitches 1/4" (6mm) away in seam allowance. for more control.

FINISH - Stitch 1/4" (6mm) from raw edge and finish with one of the following: (1) Pink OR (2) Overcast OR (3) Turn in along stitching and stitch close to fold OR (4) Overlock.

OPTIONAL FOR HEMS: Apply Seam Binding.

REINFORCE - Stitch along seamline where indicated in sewing instructions, using small machine stitches.

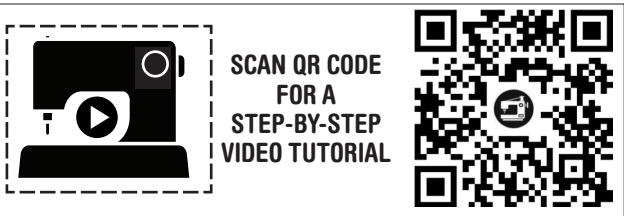
SLIPSTITCH - Slide needle through a folded edge, then pick up a thread of underneath fabric.

TOPSTITCH - On outside, stitch 1/4" (6mm) from edge, seam or previous stitching, using presser foot as guide, or stitch where indicated in instructions.

UNDERSTITCH - Open out facing or underside of garment; stitch to seam allowance close to seam.

PATTERN PIECES WILL BE IDENTIFIED BY NUMBERS THE FIRST TIME THEY ARE USED.

STITCH 5/8" (1.5CM) SEAMS WITH RIGHT SIDES TOGETHER UNLESS OTHERWISE STATED.



@sewbakemake

SIMPLY THE BEST SEWING TECHNIQUES...
FOR KNITS

- Use a ball point or stretch needle.

- Decrease pressure on presser foot for heavy sweater knits; increase pressure for lingerie knits.

- Stretch knits need seams that are supple enough to “give” with the fabric. You can sew them with straight stitches (stretching the fabric slightly as you sew), narrow zig-zag stitches or one of the stretch stitches built into many conventional machines, or on your serger.

- Some knits require very little or no pressing while sewing. Use the appropriate temperature setting. Press lightly or use steam.

- To prevent shoulder seams from stretching, pin center of hem tape, clear elastic or twill tape along seam line on front shoulder edges, then stitch the shoulder seams.

SEWING DIRECTIONS

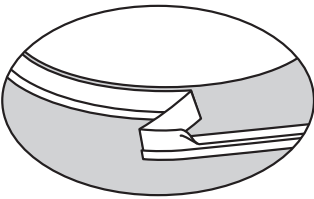
TOP A, B

BACK AND FRONT

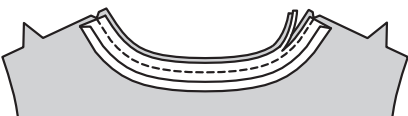
- 1.** To prevent neck edge from stretching, stitch 1/4"(6mm) from raw edge of **BACK** (2) in direction of arrows.



- 2.** Open out one folded edge of single fold bias tape; press out crease and pre-shape tape to match curve of neck edge of back by pressing lightly.



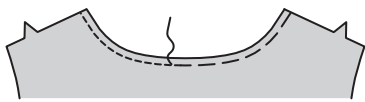
- 3.** Pin bias tape to neck edge of back, **RIGHT** sides together, having raw edges even and ends even with shoulder edges. Stitch in a 3/8"(1cm) seam. Trim seam to a scant 1/4"(6mm).



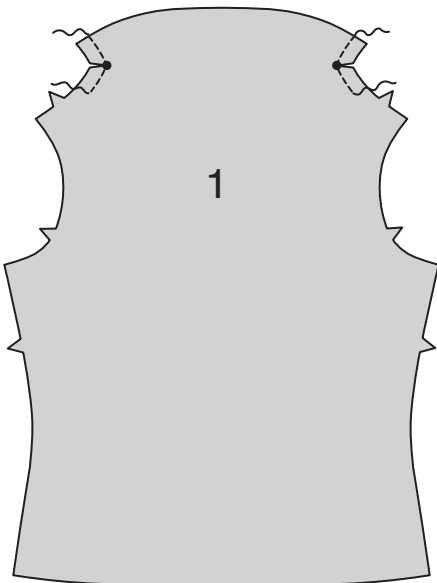
- 4.** Turn bias tape to **INSIDE**. Press. Baste in place.



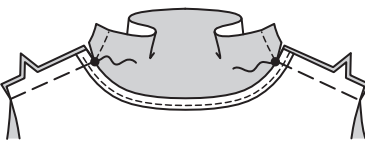
- 5.** On **OUTSIDE**, **TOPSTITCH** back neck edge.



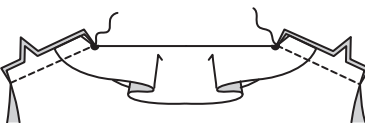
- 6. REINFORCE** upper edge of **FRONT** (1) through small dot at foldline, as shown. Clip to small dot, being careful not to clip through stitching.



- 7.** Pin back to front at shoulders, **RIGHT** sides together, matching notches and small dots. Baste.

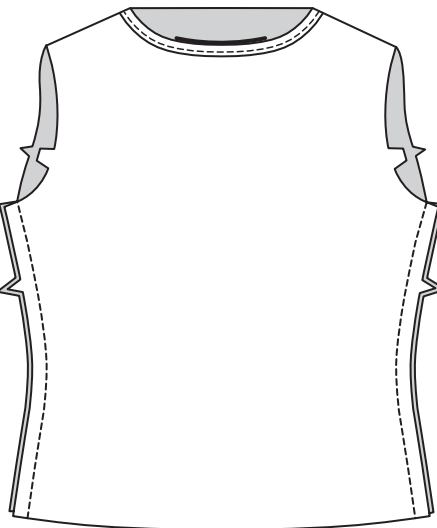


- 8.** Turn front self-facing to **OUTSIDE** along foldline (over back), having raw edges even. Stitch entire shoulder seam. Trim.



- 9.** Turn self-facing to **INSIDE** turning shoulder seam allowances toward front. Press.

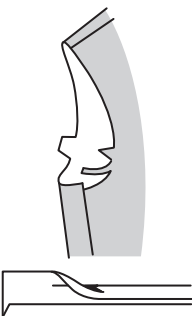
Stitch back to front at sides.



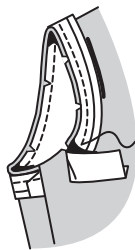
ARMHOLE FINISH A

If you haven't done so already, trim away 1/4"(6mm) from armhole edges to get a 3/8"(1cm) armhole seam allowances.

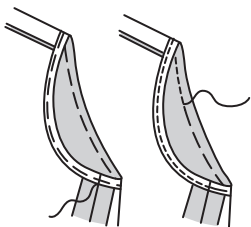
- 10.** Open out one edge of single fold bias tape, press.



- 11.** With **RIGHT** sides together, pin tape to armhole edge having raw edges even, turning under and lapping one end at side seam. Stitch in 3/8"(1cm) seam. Trim seam. Clip curves.

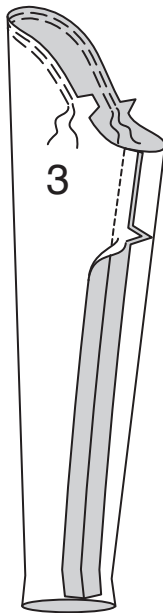


- 12.** Turn tape to **INSIDE**. Press. Baste close to inner edge of tape. On **OUTSIDE**, **TOPSTITCH** armhole edge.

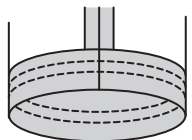


SLEEVE B

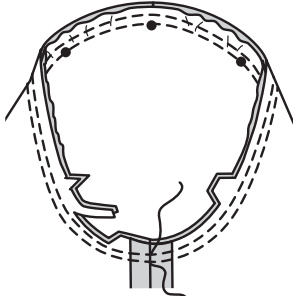
- 13. EASESTITCH** upper edge of **SLEEVE** (3) between notches. Stitch sleeve seam.



- 14.** Turn up 1-1/4"(3.2cm) hem on lower edge of sleeve. Baste close to fold. Baste again 1/4"(6mm) from raw edge of hem. On **OUTSIDE**, stitch hem along upper basting. Stitch again 1/4"(6mm) below first stitching. Remove basting.

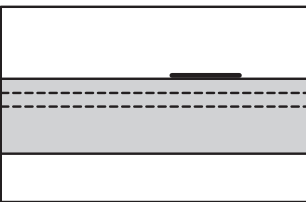


- 15.** With **RIGHT** sides together, pin sleeve into armhole edge, with center small dot at shoulder seam, matching notches, underarm seams, and remaining small dots. Adjust ease. Baste. Stitch. Stitch again 1/4"(6mm) away in seam allowances. Trim. Turn seam allowances toward sleeve.



FINISHING A, B

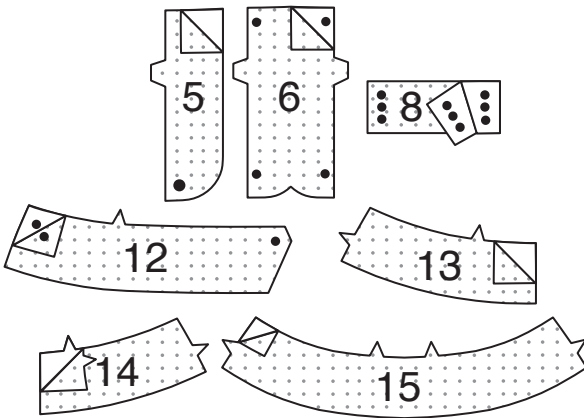
- 16.** Turn up 1-1/4"(3.2cm) hem on lower edge of top. Baste close to fold. Baste again 1/4"(6mm) from raw edge of hem. On **OUTSIDE**, stitch hem along upper basting. Stitch again 1/4"(6mm) below first stitching. Remove basting.



TROUSERS C

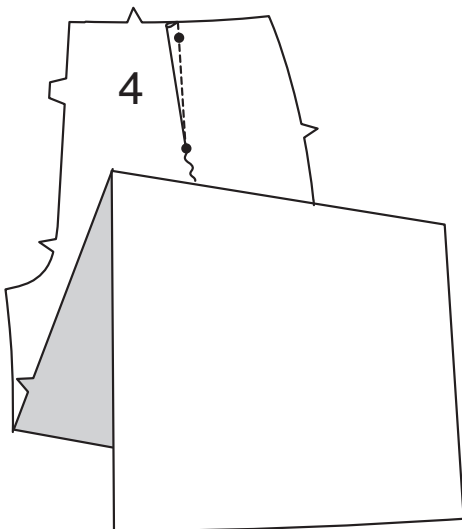
INTERFACING

- 1.** Fuse **INTERFACING** to **WRONG** side of each matching **FABRIC** section, following manufacturer's instructions.



FRONT

- 2.** Stitch **DART** in **FRONT** (4). Press dart toward center.



3. Construct front fly as follows:

A-Stitch front sections together at center front between large dot and notch.

B-Turn in right front opening edge along foldline; press.

C-Place closed zipper (face up) under right front opening edge, having pressed edge close to zipper teeth and zipper stop at small dot. Using a zipper foot, machine-baste close to pressed edge.

D-With RIGHT sides together, fold RIGHT FLY (6) in half lengthwise, having raw edges even. Stitch upper edge. Trim. Turn. Press. Baste raw edges.

E-On INSIDE, pin right fly to right front opening edge (over zipper), matching notches and small dots, having raw edges even. Baste along previous basting for zipper.

F-On OUTSIDE, using a zipper foot, stitch close to pressed edge of front through all layers.

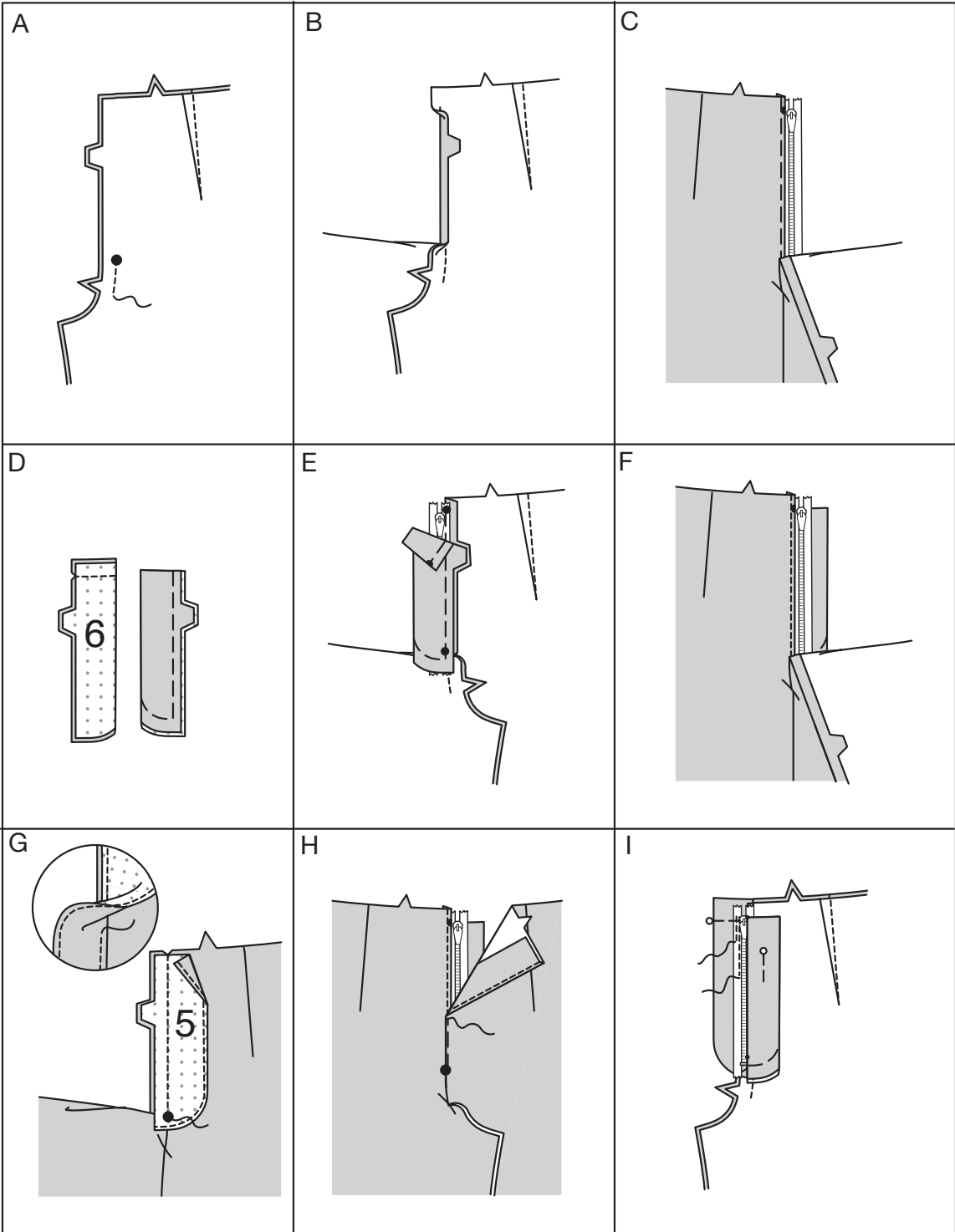
G-FINISH outer edge of LEFT FLY FACING (5). Pin fly facing to left front opening edge, matching notches, and large dots. Stitch, ending at large dot. Trim. UNDERSTITCH fly facing. Turn facing to inside.

H-Lap left front over right, matching centers. Baste close to edge through all thicknesses.

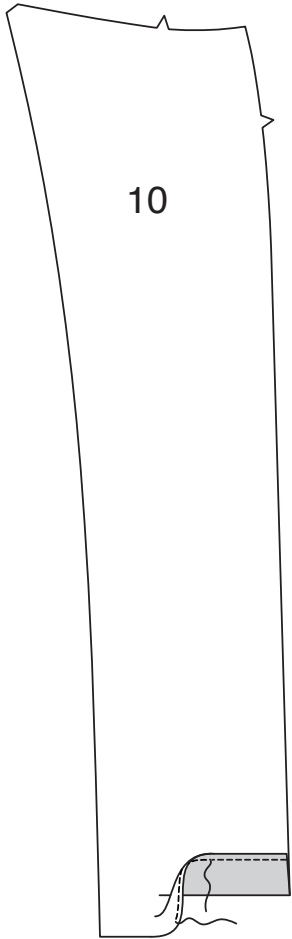
I-Pin right fly out of the way. Open out fly facing. Pin remaining zipper tape to fly facing, keeping left front free. Using a zipper foot, stitch in place close to zipper teeth and along center of zipper tape.

Turn left fly facing down. Press.

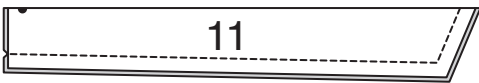
Zipper will be completed after facing is attached.



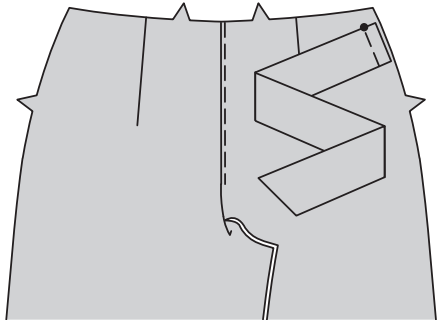
4. FINISH lower raw edge of WRAP (10) and turn up 2”(5cm) hem on lower edge. Press. Stitch in place 1/4”(6mm) from finished edge of hem.



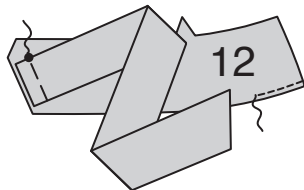
5. For each tie, fold TIE END (11) in half lengthwise, RIGHT sides together, having raw edges even. Stitch, leaving marked end open. Trim corners and seam allowances.



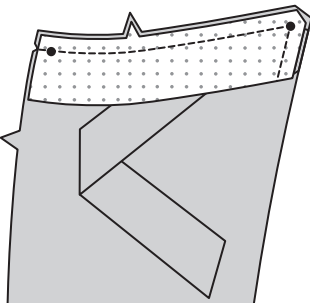
6. Turn tie ends RIGHT sides out. Press. Baste raw edges together. Pin one tie end to side edge of left front, matching small dots. Baste.



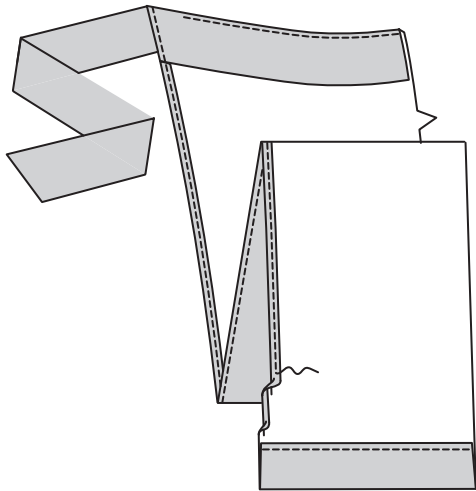
7. Pin remaining tie end to front edge of FACING (12), matching small dots. Baste. FINISH inner edge of facing.



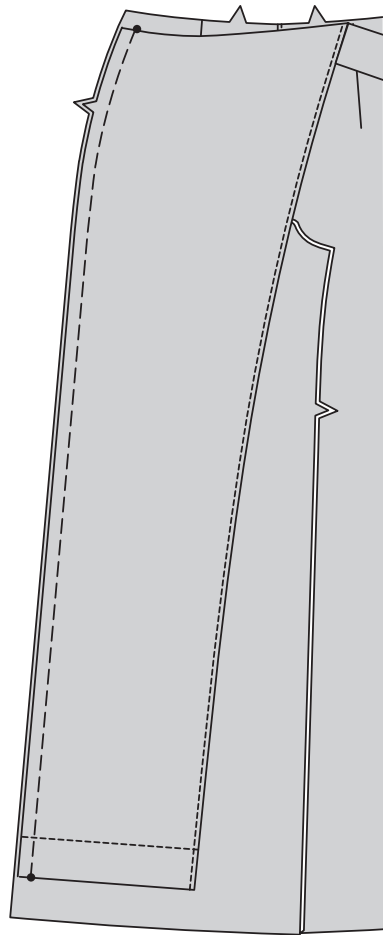
8. With RIGHT sides together, pin facing to upper and front edges of wrap, matching notches and small dots. Stitch upper and front edges, keeping finished edges of tie end free. Trim. UNDERSTITCH facing as far as possible.



9. Turn facing to INSIDE, turning tie end out, continuing to turn under 5/8”(1.5cm) hem along front edge. Press. Turn in 1/4”(6mm) on raw edge of hem. Press. Stitch close to inner pressed edge of hem, continuing stitching to upper edge.

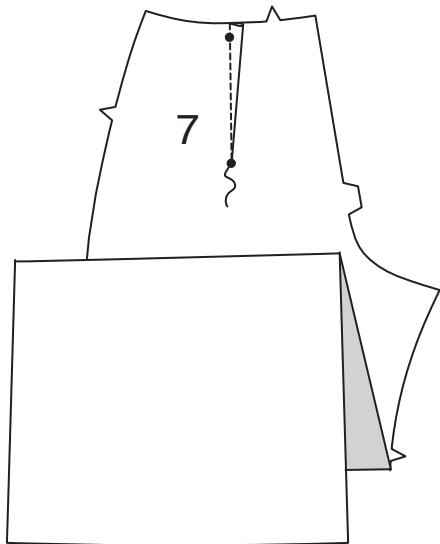


10. With RIGHT sides up, pin wrap to side edge of right front, matching notches and small dots. Baste.

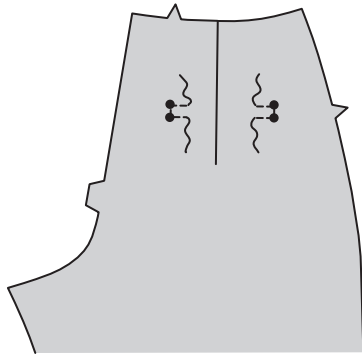


BACK AND REMAINING SEAMS

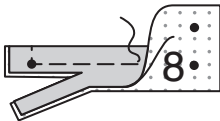
11. Stitch DART in BACK (7). Press toward center.



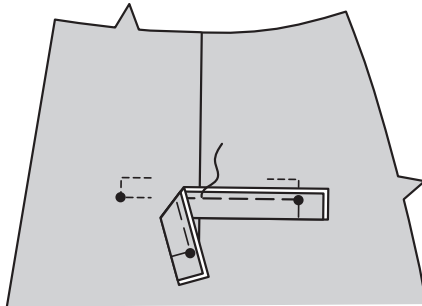
12. To REINFORCE corners of right back for pocket, stitch along stitching lines pivoting at small dots.



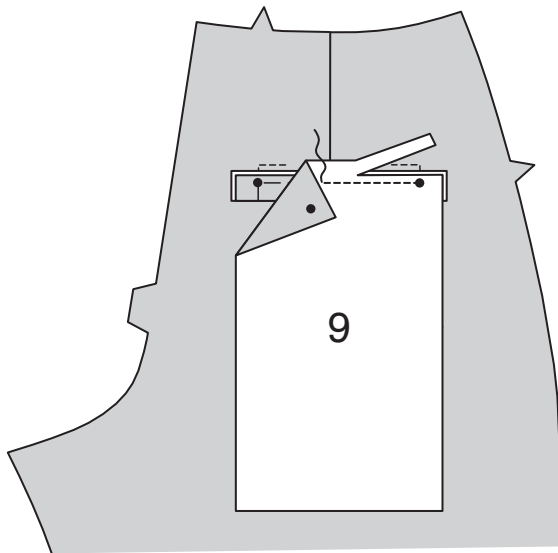
13. With WRONG sides together, fold WELT (8) in half lengthwise, having raw edges even. Press. Baste along seamline. Trim seam allowances on long edge to 1/4”(6mm).



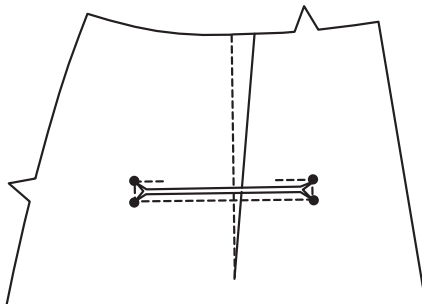
14. On OUTSIDE, pin welt to back, placing seamline along lower stitching line, matching small dots. Baste between small dots.



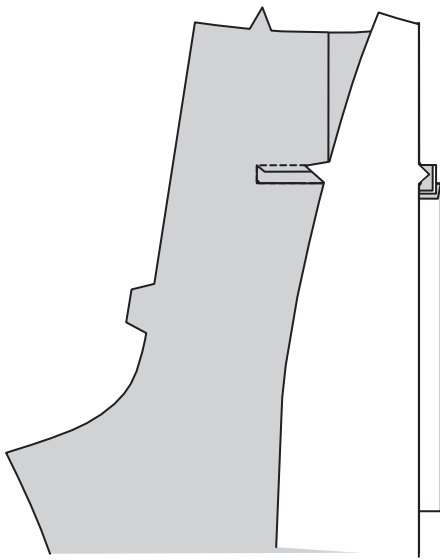
15. With RIGHT sides together, pin lower edge of BACK POCKET (9) to back (over welt), placing seamline with two small dots along lower stitching line, matching small dots. Stitch along seamline between dots. Trim pocket seam allowance to a scant 1/4”(6mm), being careful not to cut pants.



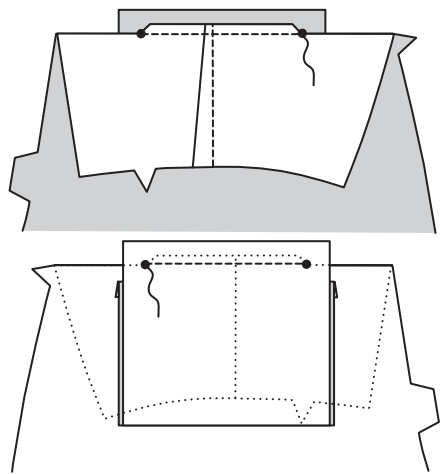
16. Slash along line between small dots and diagonally to corners, being careful not to cut welt or pocket.



17. Turn pocket and triangular ends to INSIDE, pulling out ends of welt between triangular ends, as shown. Press pocket away from welt.

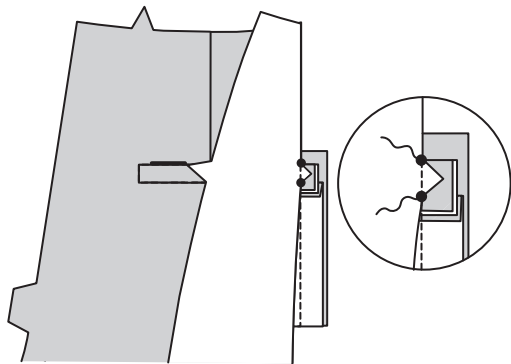


18. Turn upper edge of back down at upper small dots, having RIGHT sides of back together. Fold pocket along foldline, RIGHT sides together. Pin lower edge of pocket to back at upper stitching line, matching small dots. Stitch along seamline between small dots, keeping welt free.

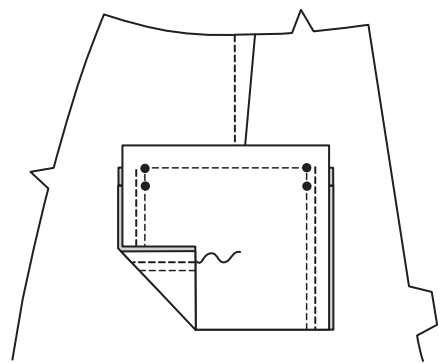


19. With RIGHT sides together, pin side edges of pocket together, matching dots, catching in welts and triangular ends, keeping back free.

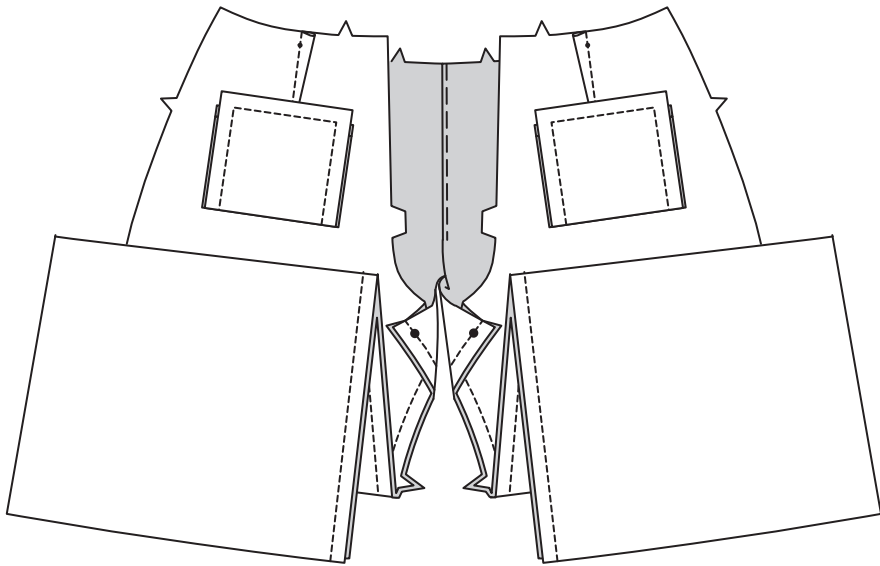
Stitch side edges together starting at upper small dot.



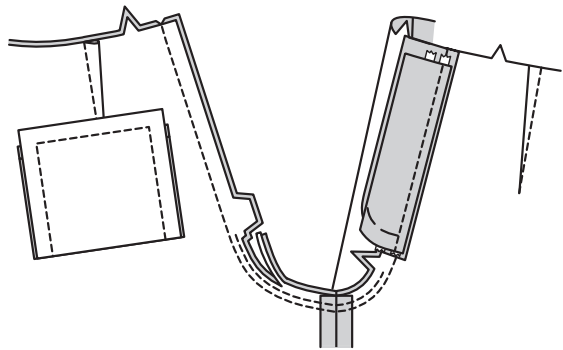
20. If desired, stitch again 1/4"(6mm) away in seam allowance, as shown.



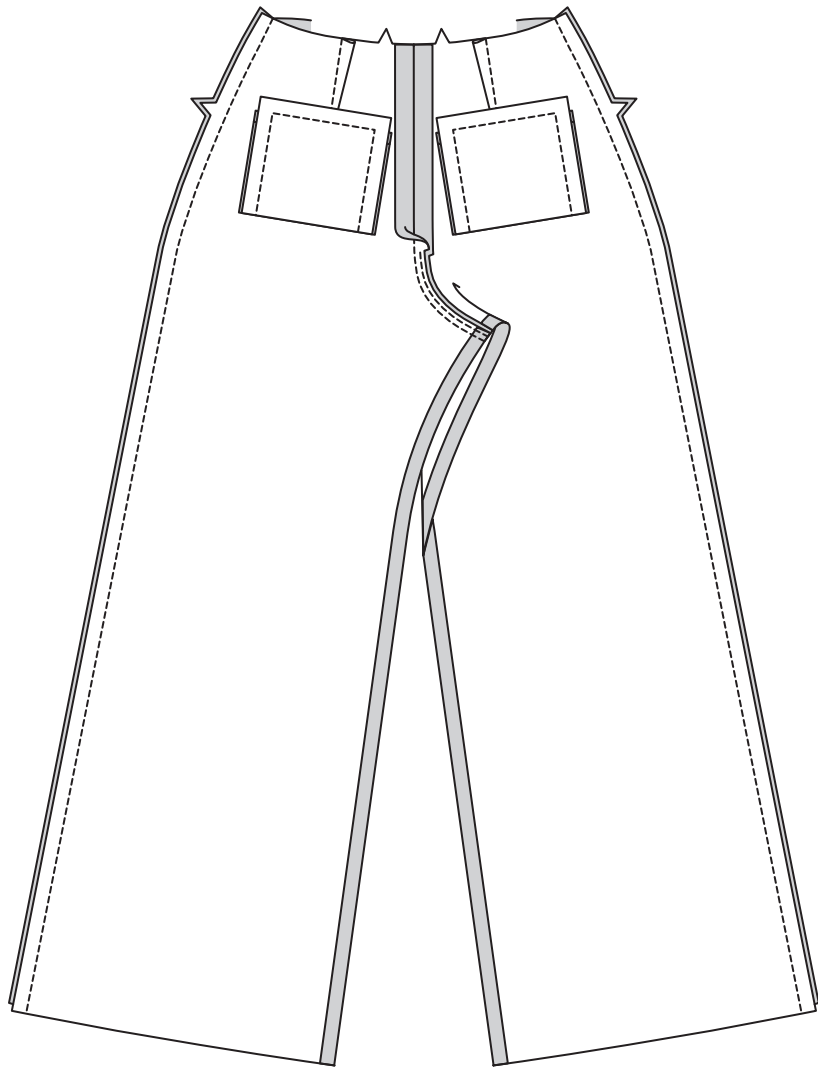
21. Stitch back to front at inner leg, stretching back to fit above notch.



22. Stitch remainder of crotch seam to notch in front. Stitch again 1/4"(6mm) away in seam allowances between notches. Trim close to second stitching.



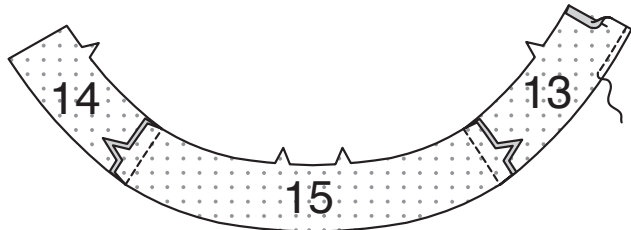
23. Stitch back to front at sides.



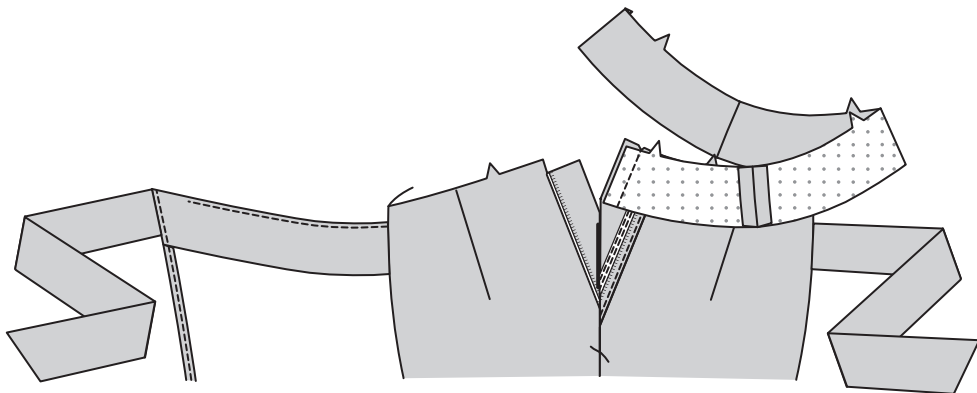
WAIST FACING

24. Stitch RIGHT FRONT FACING (13) and LEFT FRONT FACING (14) to side edges of BACK FACING (15).

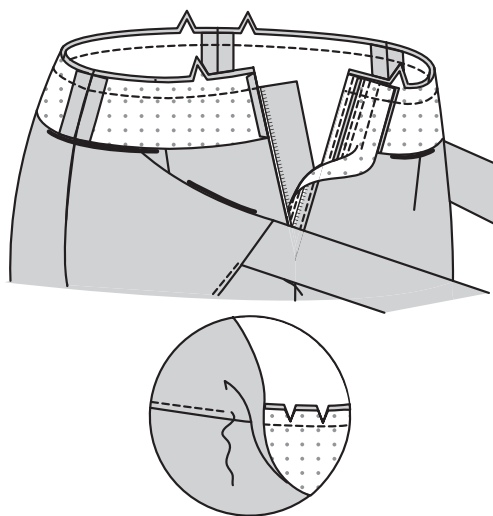
FINISH lower edge of facing. Turn in 3/8"(1cm) on front edge of right front facing. Press.



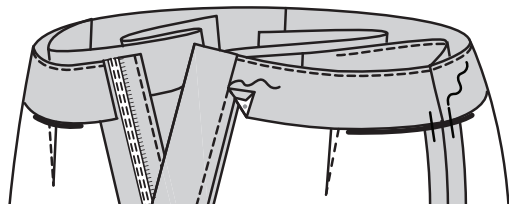
25. Open out left fly facing. With RIGHT sides together, pin left front facing to left fly facing, having edges even. Stitch, keeping front free. Press seam toward left front facing.



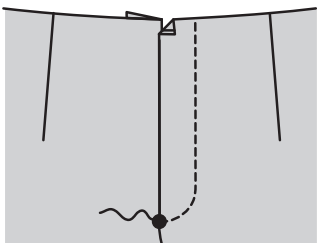
26. Turn left fly facing to OUTSIDE. Pin facing to pants at upper edge, matching centers, notches, and side seams. Baste. Stitch, keeping finished edge of tie ends and wrap free. Trim. **UNDERSTITCH** facing as far as possible.



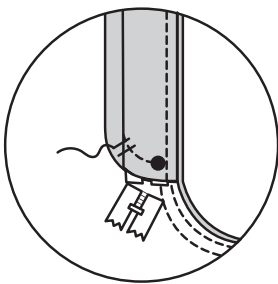
27. Turn facing to INSIDE, turning in left fly facing. Press. Tack facing at seams. **SLIPSTITCH** pressed edge of right front facing to right fly.



28. To complete zipper, on OUTSIDE, stitch left front along stitching line, keeping right fly free.

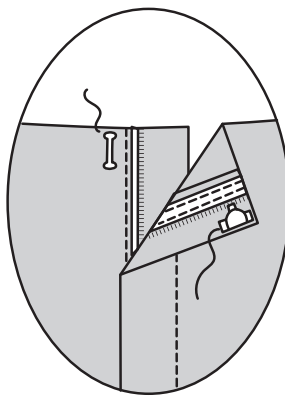


29. Turn right fly back in place. On INSIDE, hand tack fly and facing together at lower edge, as shown. Trim away excess zipper tape even with lower edge of fly, if needed.



FINISHING

30. Sew hook and bar closure to front opening, as shown.



31. Turn up 2"(5cm) hem on lower edge of pants. Press. Baste close to fold. **FINISH** raw edge. Stitch hem in place 1/4"(6mm) from finished edge.

