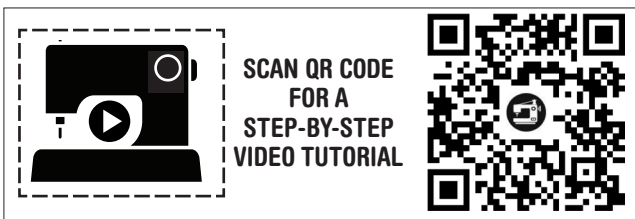


ME2133

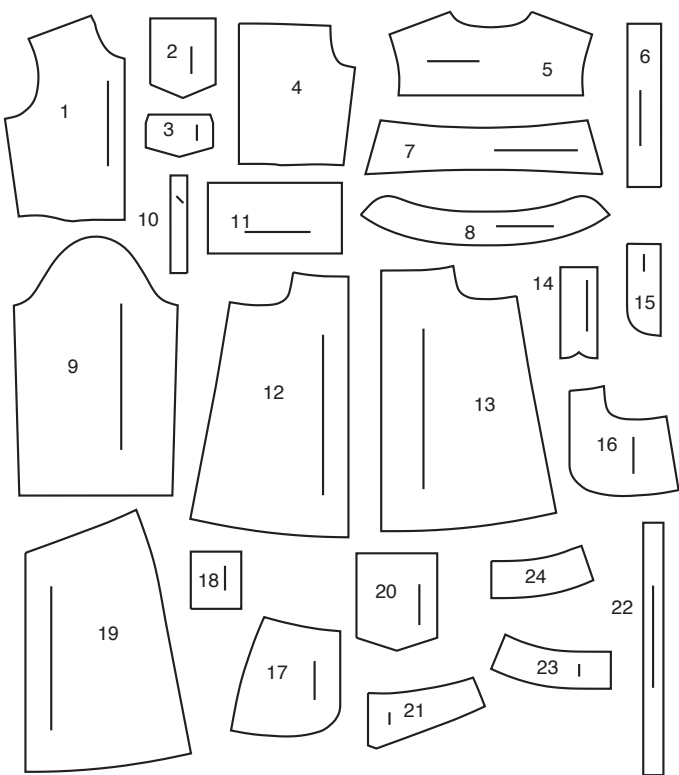
Page 1 of 4

knowME[™]
BY **mimi g**
1-800-782-0323SCAN QR CODE
FOR A
STEP-BY-STEP
VIDEO TUTORIAL

@brittanyjjones



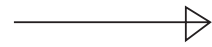
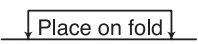
24 PATTERN PIECES



1 BODICE FRONT
2 FRONT POCKET
3 FLAP
4 BODICE BACK
5 YOKE BACK
6 FRONT BAND
7 COLLAR
8 COLLAR BAND
9 SLEEVE
10 CONTINUOUS LAP
11 CUFF
12 RIGHT SKIRT FRONT

13 LEFT SKIRT FRONT
14 RIGHT FLY
15 LEFT FLY FACING
16 POCKET FACING
17 SIDE FRONT AND POCKET
18 POCKET
19 SKIRT BACK
20 BACK POCKET
21 YOKE BACK
22 CARRIER
23 FRONT WAISTBAND
24 BACK WAISTBAND

PATTERN MARKINGS

**GRAINLINE:** Place on straight grain of fabric, parallel to selvage or fold.**FOLDLINE:** Place line on fold of fabric.**BUTTONHOLE MARKING:** Indicates exact length and placement of buttonholes.**BUTTON MARKING:** Indicates button placement.**NOTCHES AND SYMBOLS:** For matching seams and construction details.

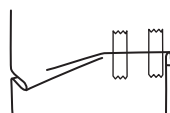
Indicates the Bustline, Waistline, Hip and/or Biceps. Measurements refer to circumference of Finished Garment (Body Measurement + Wearing Ease + Design Ease). Adjust pattern if necessary. The measurement excludes pleats, tucks, darts and seam allowances.

SEAM ALLOWANCE: 5/8" (1.5cm) included unless otherwise indicated, but not printed on tissue.

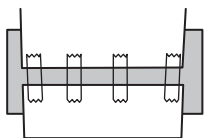
ADJUST IF NECESSARY

Lengthen or Shorten at adjustment lines (==) or where indicated on pattern. If substantial length is added, you may need to purchase additional fabric.

TO SHORTEN: Crease along adjustment line. Make a fold half the amount needed. Tape in place.



TO LENGTHEN: Slash between adjustment lines. Spread amount as needed, keeping edges parallel. Tape over paper.



When Alteration lines are not on tissue, lengthen or shorten at lower edge.

CUTTING AND MARKING

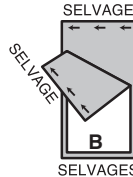
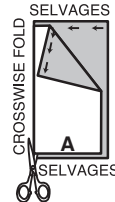
SHRINK FABRIC if not labeled pre-shrunk. Press.

CIRCLE LAYOUT for View, Size, Fabric Width.

Use **WITH NAP** layout for fabrics with one-way designs, nap, pile or surface shading. Because most knits have surface shading, a with nap layout is used.

For **DOUBLE THICKNESS (WITH FOLD)** - fold fabric with right sides together.

*** DOUBLE THICKNESS (WITHOUT FOLD)** - For fabrics with nap, fold fabric crosswise, right sides together. Mark as shown. Cut along crosswise fold of fabric (A). Turn upper layer 180° so arrows go in same direction and place over lower layer, right sides together (B).



For **SINGLE THICKNESS** - place fabric right side up. (For Fur Pile fabrics, place pile side down.)

★ Cut other pieces first, allowing enough fabric to cut this piece. Open fabric. For "Cut 1" pieces, cut piece once on single layer of fabric with piece face up on right side of fabric.

Pattern may have cutting lines for several sizes. Select the proper cutting line or pattern pieces for your size.

Before **CUTTING** place all pieces on fabric according to layout. Pin. (**Layouts show approximate position of pattern pieces; position may vary according to your pattern size.**) Cut **ACCURATELY**, cutting notches outward.

Before removing pattern, **TRANSFER MARKINGS** and lines of construction to Wrong Side of fabric, using the Pin and Chalk Pencil method or Tracing Paper and Dressmaker Wheel. Markings needed on right side of fabric should be thread traced.

NOTE: Broken-line boxes (a! b! c!) in layouts represent pieces cut by measurements provided.

CUTTING LAYOUTS

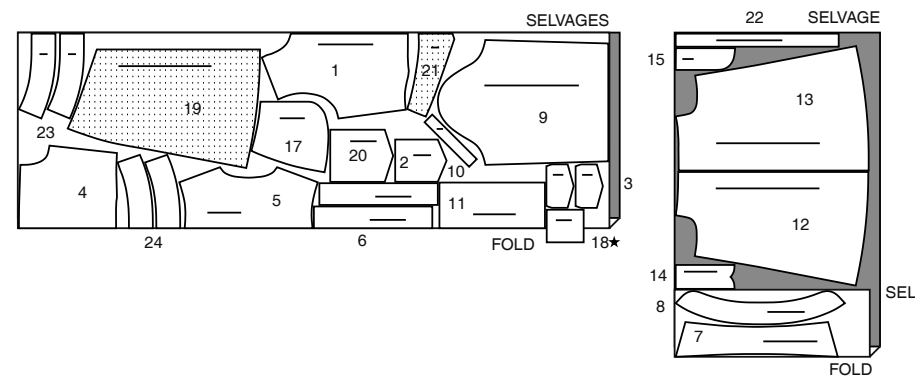
Note: For Synthetic Suede Or Leather-Like Fabrics Alter Tissue Pattern To Fit Exactly As Mistakes In Stitching Will Show. Place Pattern On Fabric Following Cutting Layouts, To Hold Pattern When Cutting, Use Pins Within Seam Allowance Or Use Masking Tape. Cut With Sharp Shears, Transfer All Marking With Tailor's Chalk. Do Not Use A Tracing Wheel, It Will Make Holes In Fabric.

DRESS

PIECES 1 2 3 4 5 6 7 8 9 10 11 12 13 14 15 17 18 19 20 21 22 23 24

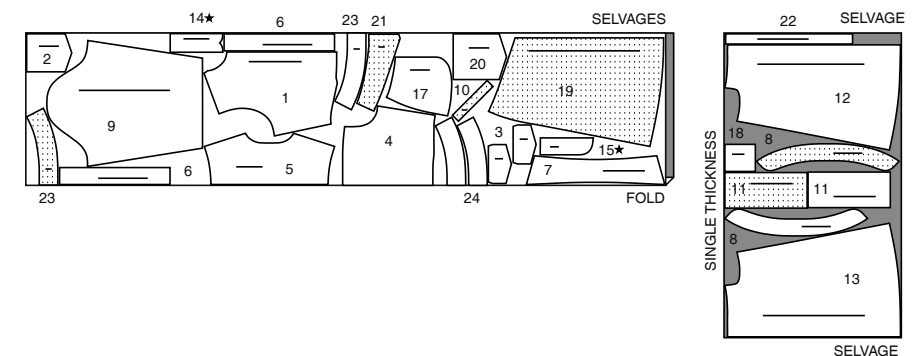
45" (115CM) WITH NAP

GIRL'S SIZES 7 8 10 12 14



45" (115CM) WITH NAP

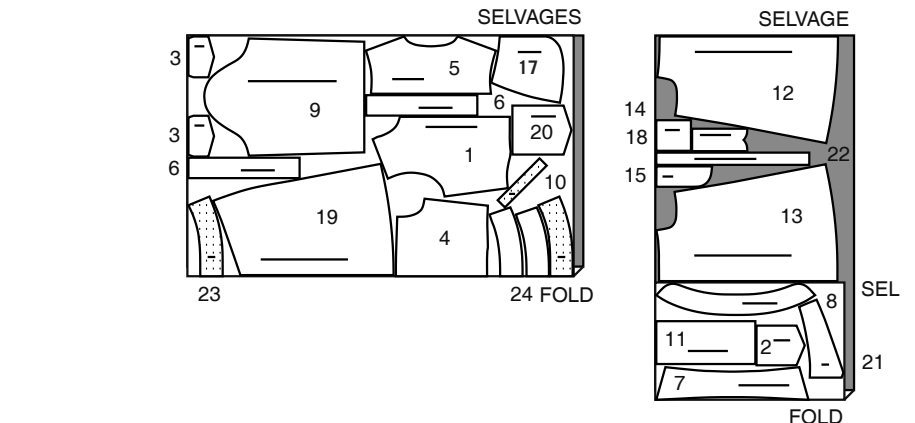
MISSES' SIZES 10 12 14 16 18



60" (150CM)

WITH NAP

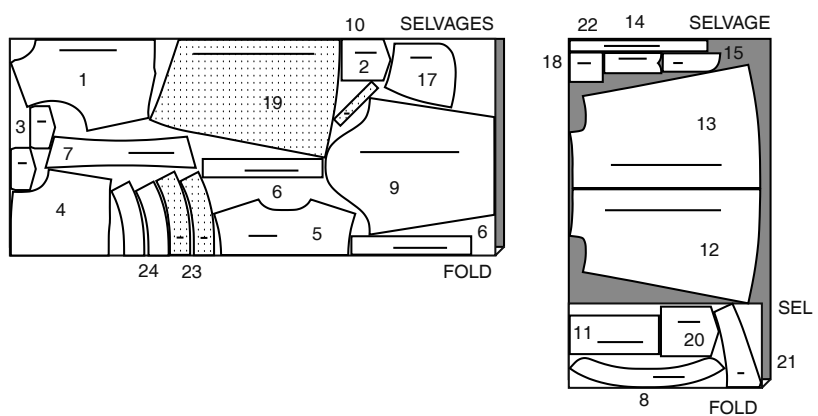
GIRL'S SIZES 7 8 10 12 14



60" (150CM)

WITH NAP

MISSES' SIZES 10 12 14 16 18



LINING (POCKETS)

PIECE 16

45" (115CM)

WITHOUT NAP

GIRL'S SIZES 7 8 10 12 14

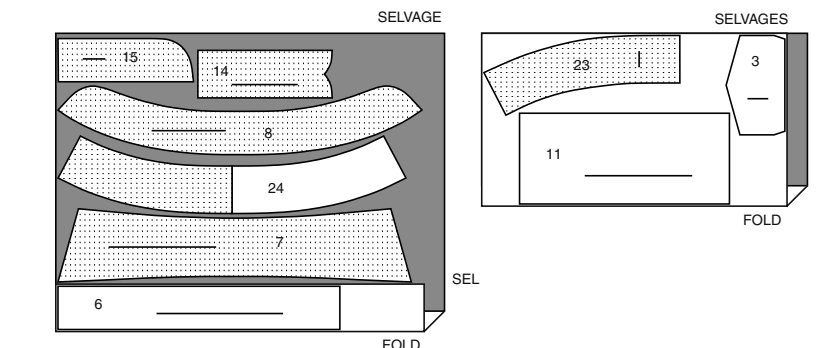


INTERFACING

PIECES 3 6 7 8 11 14 15 23 24

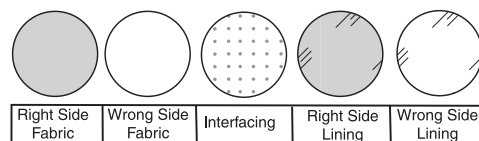
20" (51CM)

ALL SIZES



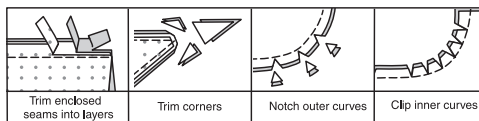
SEWING INFORMATION

FABRIC KEY



SEAM ALLOWANCES

Use 5/8" (1.5cm) seam allowances unless otherwise indicated.



PIN AND FIT

Pin or baste seams, **RIGHT SIDE TOGETHER**, matching notches. Fit garment before stitching major seams.

PRESS

Press seam allowances flat; then open unless otherwise stated. Clip where necessary so they lie flat.

GLOSSARY

GLOSSARY OF SEWING METHODS

Sewing methods shown in **BOLD** are defined below:

EASE – Loosen needle tension slightly. On **OUTSIDE**, stitch 5/8" (1.5cm) from cut edge using a long stitch. Stitch again 1/4" (6mm) from the first stitching within the seam allowance.

FINISH – Finish outer edge of left fly facing by stitching 1/4" (6mm) from raw edge and finishing with pinking, overcasting, overlock, or by turning in along stitching and stitching close to fold.

STAYSTITCH – Stitch 1/2" (1.3cm) from cut edge in direction of arrows. This stitching stays in permanently to prevent stretching on curved edges. (Shown only in the first illustration.)

UNDERSTITCH – Press facing and seam away from garment, stitching through facing and seam allowances close to seam.

PATTERN PIECES WILL BE IDENTIFIED BY NUMBERS THE FIRST TIME THEY ARE USED.

STITCH 5/8" (1.5CM) SEAMS WITH RIGHT SIDES TOGETHER UNLESS OTHERWISE STATED.

SCAN QR CODE
FOR A
STEP-BY-STEP
VIDEO TUTORIAL

SEWING DIRE

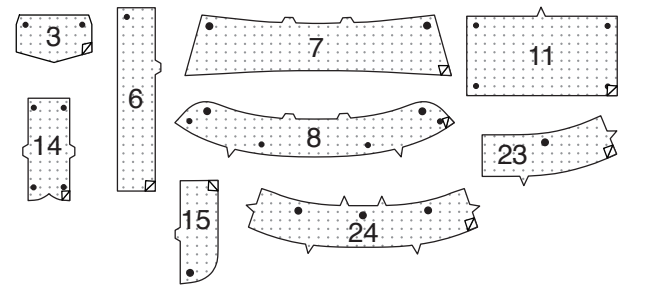
@brittanyjjones

DRESS

INTERFACING

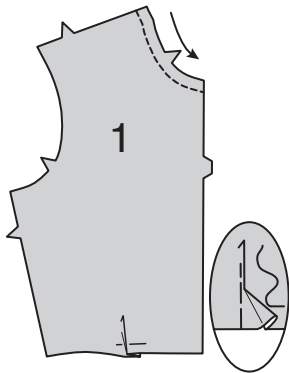
1. Pin interfacing to the WRONG side of FLAP (3), FRONT BAND (6), COLLAR (7), COLLAR BAND (8), CUFF (11), RIGHT FLY (14), LEFT FLY FACING (15), FRONT WAISTBAND (23), and BACK WAISTBAND (24).

Fuse interfacing in place following manufacturer's directions.

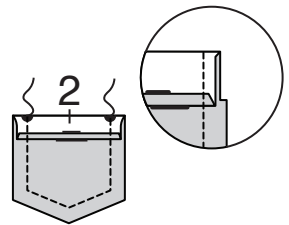


BODICE FRONT

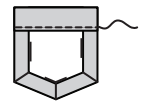
2. STAYSTITCH neck edge of BODICE FRONT (1). To make a pleat in front, on OUTSIDE, fold front along the solid line. Bring fold to broken line; pin. Baste across raw edge.



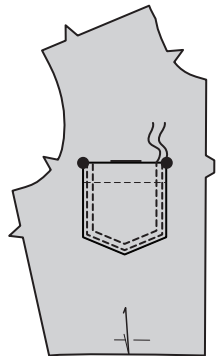
3. Press under 1/4" (6mm) on upper edge of FRONT POCKET (2). Turn upper edge to OUTSIDE along fold line, forming facing. Stitch along seam line on raw edges. Trim seam allowance in the facing area to 1/4" (6mm).



4. Turn corners RIGHT side out, turning facing to the WRONG side; press, pressing under raw edges along stitching, folding in fullness at corners. Stitch facing close to inner edge.



5. On OUTSIDE, pin pocket to bodice front, matching large dots. Stitch close to side and lower edges and 1/4" (6mm) away.

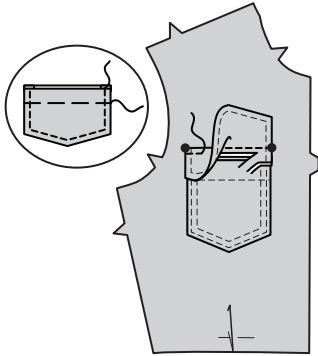


6. With RIGHT sides together, stitch facing to FLAP (3), leaving edge with small dots open. Trim seam and corners.

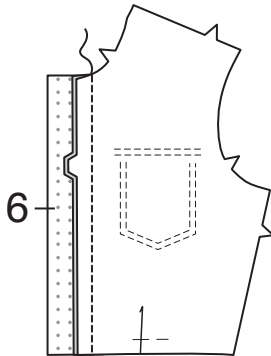


7. Turn flap; press. Machine-baste 5/8" (1.5cm) from raw edge. On OUTSIDE, topstitch 1/4" (6mm) from finished edge.

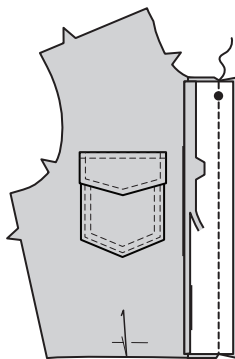
On OUTSIDE, pin flap to front, placing basting along flap line, matching small dots, as shown. Stitch along basting. Trim close to stitching. Turn flap down; press. Topstitch 1/4" (6mm) from upper edge.



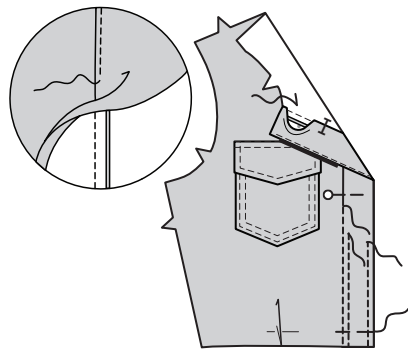
8. With RIGHT sides together and raw edges even, pin FRONT BAND (6) to bodice front, matching notches. Stitch. Trim seam. Press seam toward band, pressing band out.



9. Press under a generous 1/2" (1.3cm) on notched edge of front band facing. Trim to 1/4" (6mm). With RIGHT sides together and raw edges even, pin facing to front band, matching small dots. Stitch front edge. Trim seam.

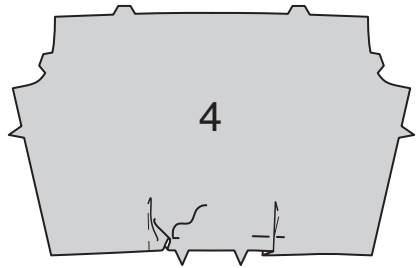


10. UNDERSTITCH the facing. Turn facing to INSIDE; press. On INSIDE, pin pressed edge of facing over seam, placing pins on OUTSIDE. On OUTSIDE, stitch in the ditch of the seam, catching in pressed edge of facing on the INSIDE. Baste across upper and lower edges of band. On OUTSIDE, topstitch front band 1/4" (6mm) from seam and finished edge.

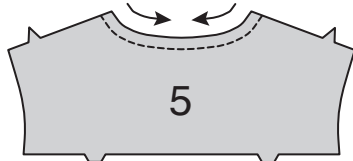


BODICE BACK

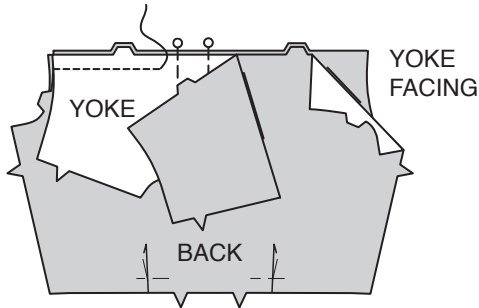
11. To make a pleat in BODICE BACK (4), on OUTSIDE, fold back along solid lines. Bring folds to broken lines; pin. Baste across raw edge.



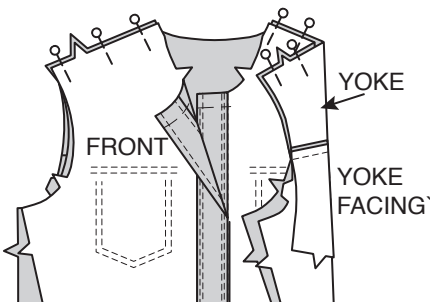
12. STAYSTITCH neck edges of YOKE BACK (5) sections.



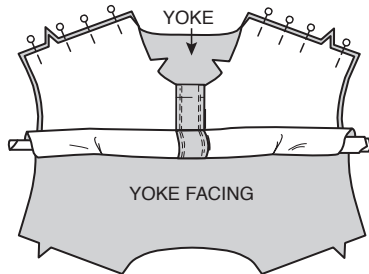
13. With RIGHT sides together and raw edges even, pin yoke back to bodice back, matching notches. Pin RIGHT side of yoke back facing to WRONG side of bodice back, having raw edges even. Stitch through all thicknesses. Trim seam.



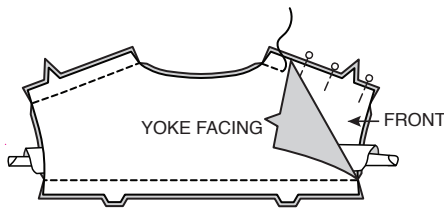
14. Press yoke up, leaving yoke facing down toward back, as shown. With RIGHT sides together, pin yoke to fronts at shoulder edges.



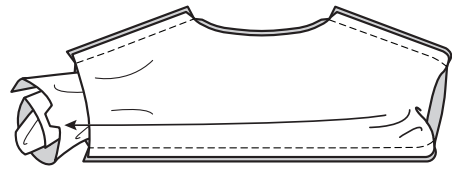
15. Roll back and both front sections together toward yoke, as shown.



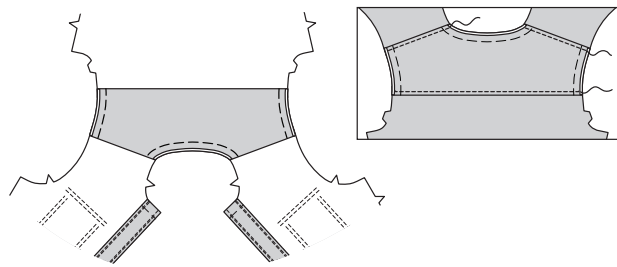
16. Bring the yoke facing up and pin shoulder edges together. (Rolled shirt is between yoke layers.) Stitch through all thicknesses, being careful not to catch in rolled shirt. Trim seams.



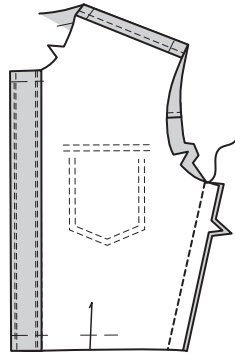
17. Pull out rolled shirt through one armhole opening, turning shirt RIGHT side out.



18. Press all yoke seams. Machine-baste neck and armhole edges together. On OUTSIDE, topstitch yoke 1/4" (6mm) from seams.



19. Stitch bodice front to bodice back at side edges.

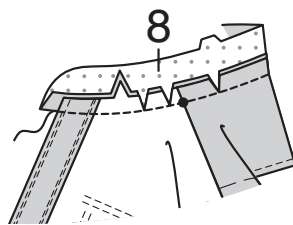


COLLAR

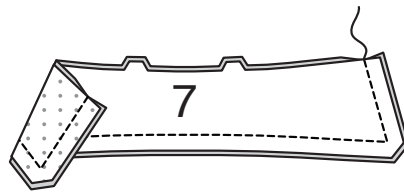
20. Clip bodice neck edge to staystitching.

With RIGHT sides together, pin single notched edge of COLLAR BAND (8) to neck edge, matching centers back and placing small dots at shoulder seams. (Collar band extends 5/8" (1.5cm) beyond front opening edges.) Stitch neck edge. Trim seam; clip curves.

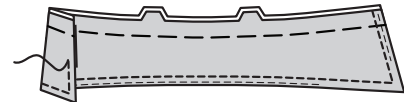
Press band out; press seam toward band.



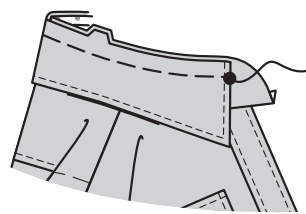
21. With RIGHT sides together and raw edges even, stitch facing to COLLAR (7), leaving notched edges open. Trim seam and corners. UNDERSTITCH facing as far as possible.



22. Turn collar; press. Machine-baste raw edges together. Topstitch collar 1/4" (6mm) from finished edge.

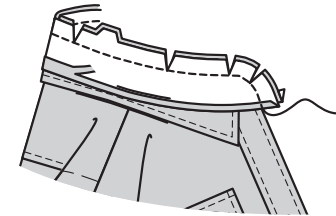


23. With RIGHT sides together and raw edges even, pin collar (facing side) to collar band, matching centers back and double notches and placing ends at large dots. Machine-baste.

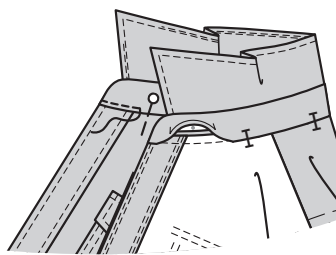


24. Press under a generous 1/2" (1.3cm) on single notched edge of collar band facing; trim to 1/4" (6mm).

With RIGHT sides together, pin collar band facing to collar band (over collar), matching centers. Stitch front and double notched edge. Trim seam; clip curves.

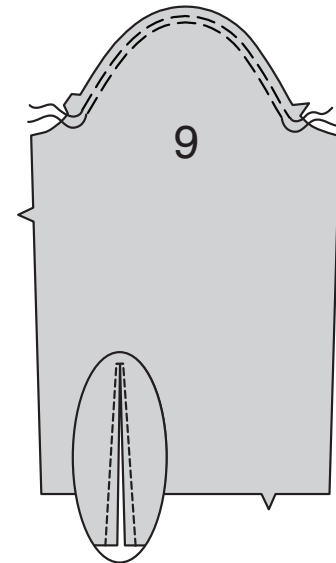


25. Turn band facing to INSIDE; press. Pin pressed edge of facing over seam, placing pins on OUTSIDE. On OUTSIDE, stitch close to lower edge of collar band, catching in pressed edge of collar band facing on INSIDE.



SLEEVE

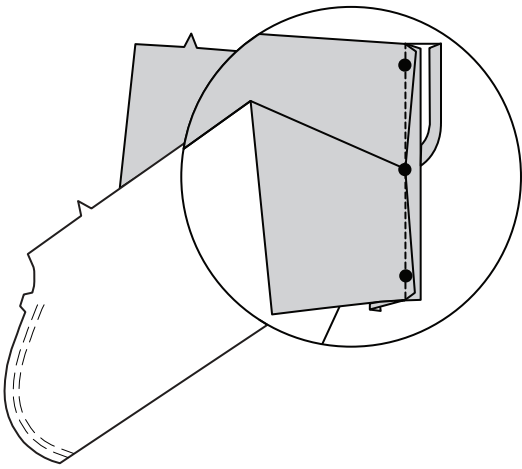
26. EASE top of SLEEVE (9) between the notches. To make slash opening at lower edge of sleeve, stitch along stitching lines. Pivot and take one small stitch across the point. Slash between stitching, being careful not to slash through the stitch at the point.



27. Turn in 1/4" (6mm) seam allowance on unmarked long edge of CONTINUOUS LAP (10). Press.

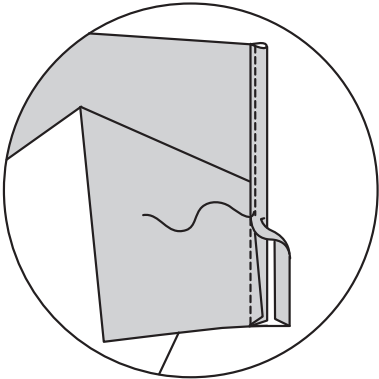


28. Spread slashed edges of sleeve apart so that they form a straight line. Baste RIGHT side of lap to WRONG side of slashed edges, placing remaining 1/4" (6mm) stitching line along stitching, matching small dots. Stitch along stitching line.

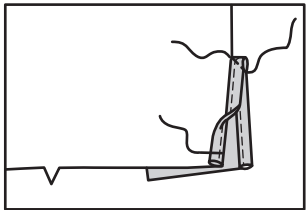


29. Press lap out, pressing seam toward lap.

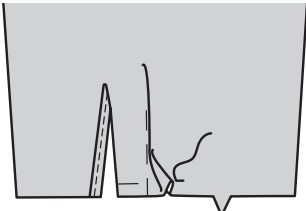
Press remaining long edge of lap to outside. Stitch pressed edge over seam.



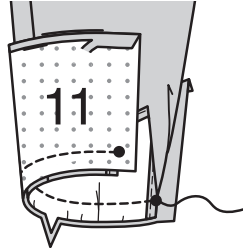
30. Press front portion of lap to INSIDE; baste in place across lower edge. Stitch across upper edge of fold diagonally, as shown.



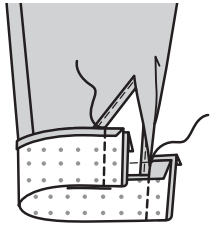
31. To make a soft pleat, on OUTSIDE, fold along solid line. Bring fold to broken line; pin. Baste across lower edge.



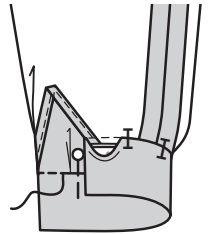
32. Press under a generous 1/2" (1.3cm) on unnotched edge of CUFF (11). Trim to 1/4" (6mm). With RIGHT sides together, pin sleeve to cuff, placing opening edges at small dots. Baste, easing sleeve edge to fit. Stitch. Trim seam.



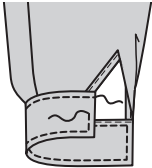
33. Press seam toward cuff, pressing cuff out. Fold cuff along fold line, with RIGHT sides together. Stitch ends. Trim seams.



34. Turn cuff; press. On INSIDE, pin pressed edge of cuff over seam, placing pins on OUTSIDE. On OUTSIDE, stitch in the ditch of the seam, catching in pressed edge of cuff facing on INSIDE.

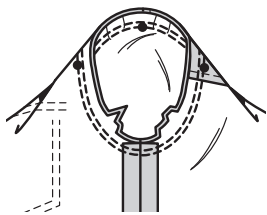


35. ON OUTSIDE, topstitch cuff 1/4" (6mm) from seam and finished edges.



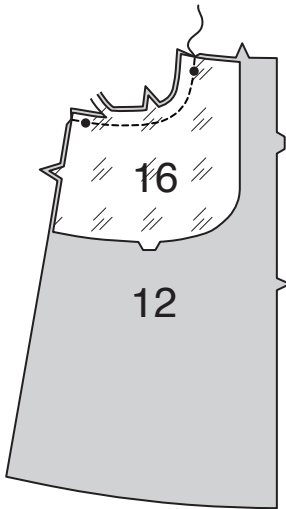
36. Turn sleeve RIGHT side out. Hold bodice WRONG side out with armhole toward you. With RIGHT sides together, pin sleeve to armhole edge with center small dot at shoulder seam, matching underarm seams, notches and remaining small dots. Pull up ease stitches to fit.

To distribute fullness evenly, slide fabric along bobbin threads until there are no puckers or tucks on the seam line. Baste. Stitch. Stitch again 1/8" (3mm) from first stitching. Trim seam below notches close to stitching. Press only the seam allowance, shrinking out fullness.

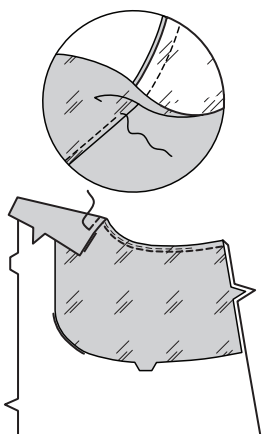


SKIRT FRONT

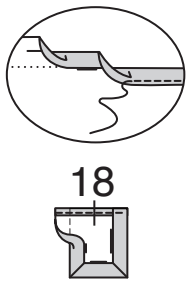
37. With RIGHT sides together and raw edges even, pin POCKET FACING (16) to RIGHT SKIRT FRONT (12), matching small dots and notches. Stitch upper curved edge. Trim seam.



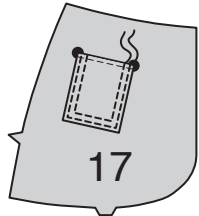
38. UNDERSTITCH the pocket facing. Turn pocket facing to INSIDE; press. Topstitch skirt 1/4" (6mm) from finished edge.



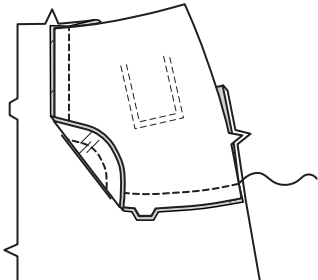
39. Press under 5/8" (1.5cm) on upper edge of POCKET (18). To form a narrow hem, tuck under raw edge to meet crease. Press. Stitch hem in place. Stitch along seamline on raw edges. Press under raw edges along stitching, folding in fullness at corners.



40. On OUTSIDE, pin pocket to SIDE FRONT AND POCKET (17), matching large dots. Stitch pocket close to side and lower edges and 1/4" (6mm) from first stitching.

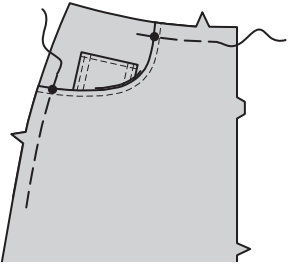


41. On INSIDE, with RIGHT sides together, pin side front and pocket section to pocket facing, having raw edges even. Stitch double notched edge, as shown.



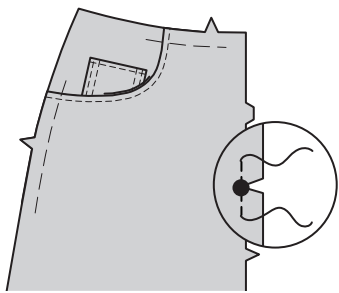
42. On OUTSIDE, lap right skirt front over side front and pocket section, matching small dots, having raw edges even; pin. Baste side and upper edges together.

Stitch pocket facing and side front and pocket sections to LEFT SKIRT FRONT (13) in the same manner, omitting coin pocket (18).



FLY FRONT ZIPPER

43. To reinforce right skirt front at the large dot, stitch along seamline for 1/2" (1.3cm) each side of dot, stitching through dot, as shown. Clip to stitching at large dot.



44. Construct fly front as follows:

A – Stitch skirt front sections together at center front below the large dot. Press seam toward LEFT front.

B – Turn in right front opening edge along foldline; press.

C – Place closed zipper (face up) under right front opening edge, having pressed edge close to zipper teeth and zipper stops at small dots. Using a zipper foot, baste close to pressed edge.

D – With right sides together, fold RIGHT FLY (14) along foldline. Stitch lower edge. Trim. Turn. Press. Baste raw edges.

E – On INSIDE, pin right fly to right front opening edge (over zipper), matching notches and small dots, having raw edges even. Baste along previous basting for zipper.

F – On OUTSIDE, using a zipper foot, stitch close to pressed edge of front through all layers.

G – FINISH outer edge of LEFT FLY FACING (15). Pin fly facing to left front opening edge, matching notches, and large dots. Stitch, ending at large dot. Trim. **UNDERSTITCH** fly facing. Turn facing to inside.

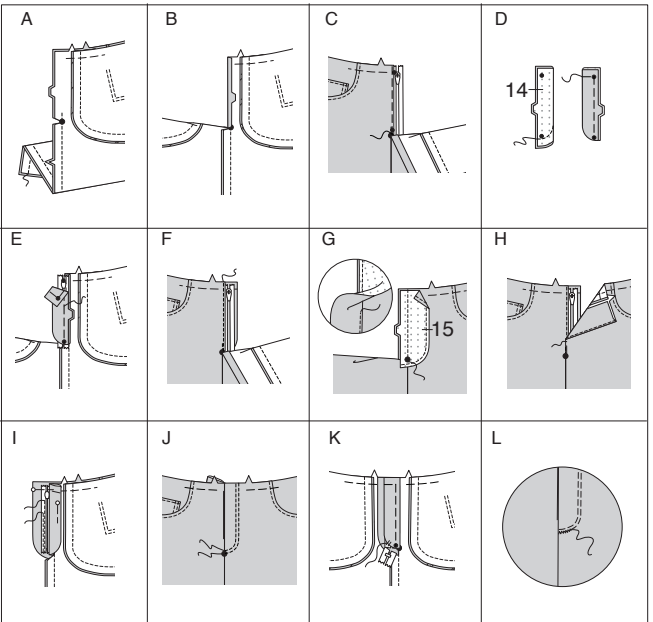
H – Lap left front over right, matching centers. Baste close to edge through all thicknesses.

I – Pin right fly out of the way. Open out fly facing. Pin remaining zipper tape to fly facing, keeping left front free. Using a zipper foot, stitch in place close to zipper teeth and along center of zipper tape.

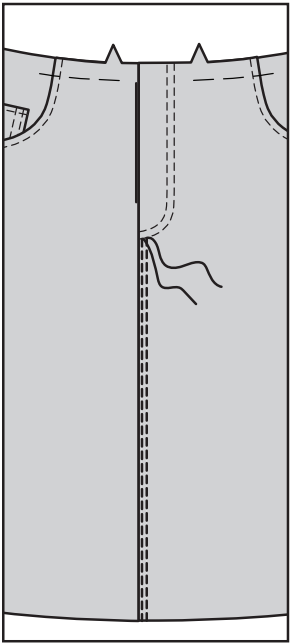
J – Turn facing down. On OUTSIDE, stitch left front along stitching line and again 1/4" (6mm) inside first stitching, keeping right fly free.

K – Turn right fly back in place. On INSIDE, hand tack fly and facing together at lower edge, as shown. Trim away excess zipper tape even with lower edge of fly, if needed.

L – If desired, on OUTSIDE, machine-stitch a bar tack across lower end of fly through all thicknesses.

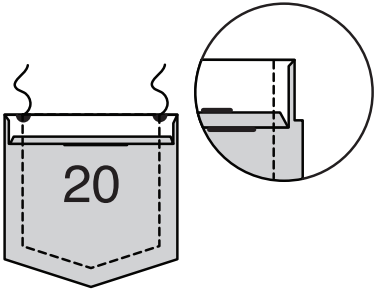


45. On OUTSIDE of LEFT FRONT, edgestitch and topstitch 1/4" (6mm) from center front seam from lower edge to zipper stitching line.

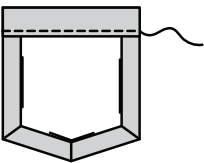


SKIRT BACK

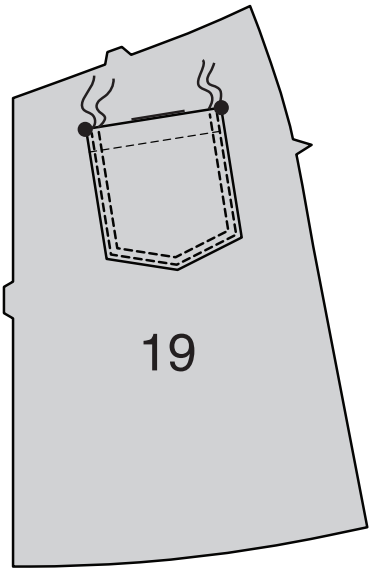
46. Press under 1/4" (6mm) on upper edge of BACK POCKET (20). Turn upper edge to OUTSIDE along fold line, forming facing. Stitch along seam line on raw edges. Trim seam allowance in the facing area to 1/4" (6mm).



47. Turn corners RIGHT side out, turning facing to the WRONG side; press, pressing under raw edges along stitching, folding in fullness at corners. Stitch facing close to inner edge.

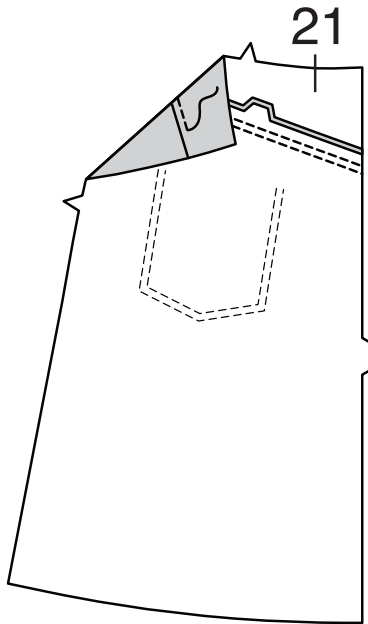


48. On OUTSIDE, pin pocket to SKIRT BACK (19), matching large dots. Stitch close to side and lower edges and 1/4" (6mm) away.



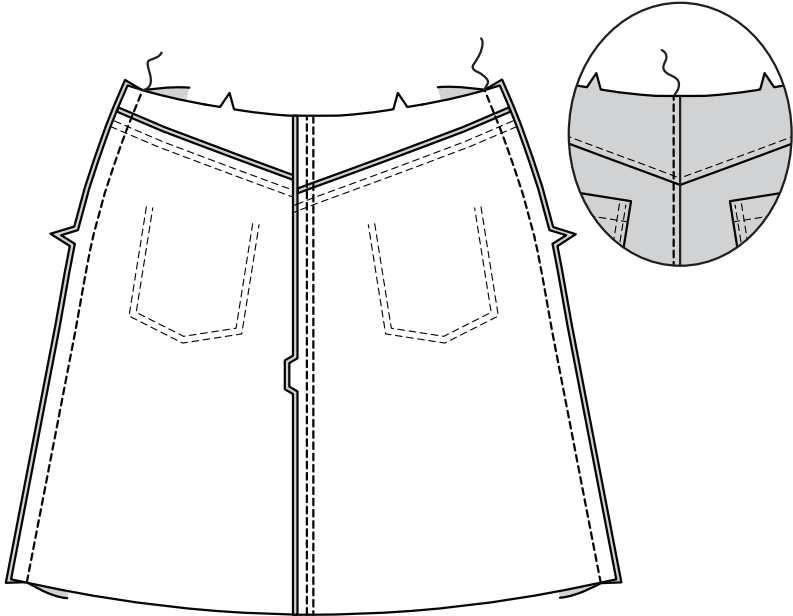
49. With RIGHT sides together and raw edges even, pin YOKE BACK (21) to skirt back, matching notches. Stitch. Press up yoke, pressing seam toward yoke.

On OUTSIDE, topstitch yoke back 1/4" (6mm) from seam.



50. Stitch back sections together at center. Press seam toward right back. On OUTSIDE, topstitch right back 1/4" (6mm) from seam.

Stitch skirt front to skirt back at side edges.



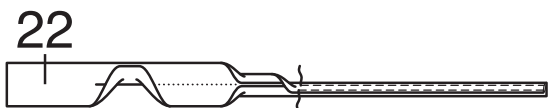
CARRIERS

51. Fold CARRIER (22) in half, lengthwise with WRONG sides together. Press, setting in a crease.

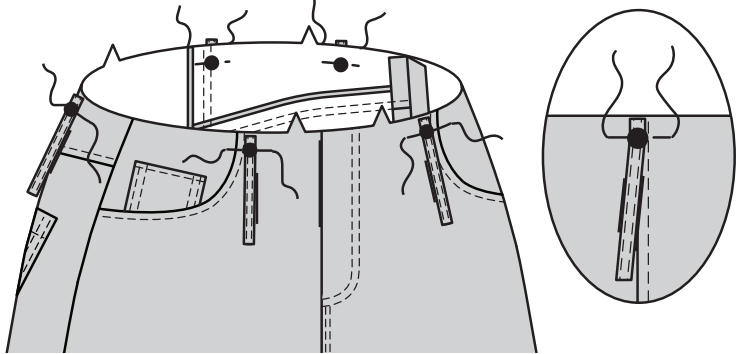
Open out long edges of carrier and turn them to WRONG side so that they meet at the crease. Press.

Fold carrier in half lengthwise, bringing pressed edges together. Stitch close to both long edges.

Cut carrier into five sections, each 3-3/4" (9.5m) long.



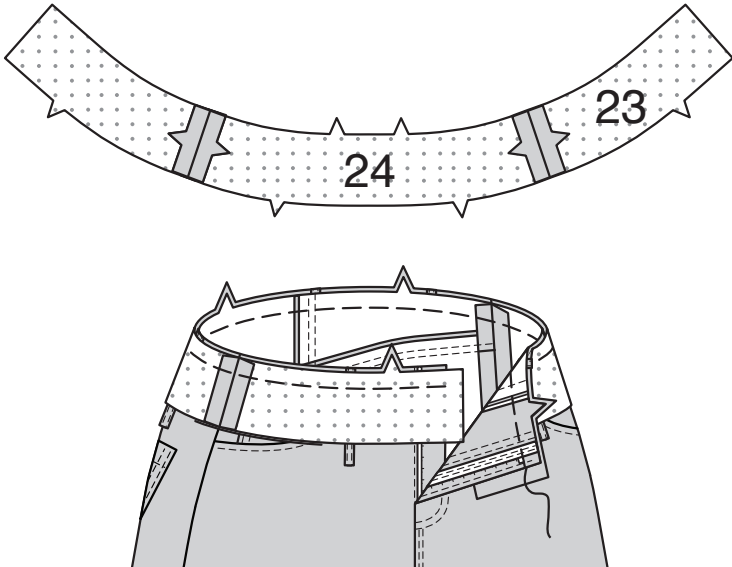
52. On OUTSIDE, pin one end of each carrier to upper edge of skirt over the large dots with raw edges even. Baste.



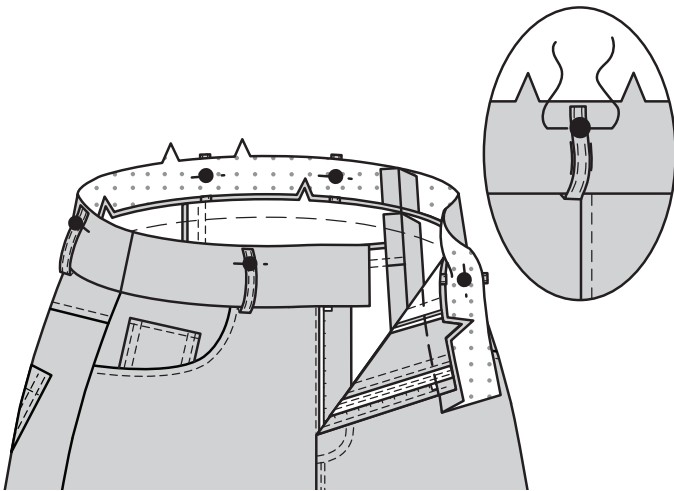
WAISTBAND

53. Stitch FRONT WAISTBAND (23) sections to BACK WAISTBAND (24) at ends.

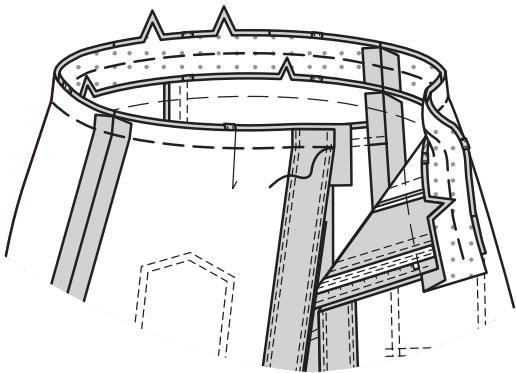
With RIGHT sides together and raw edges even, pin waistband to skirt (over carriers), matching centers, seams, and notches. Baste. (Front ends of waistband will extend 5/8" (1.5cm) beyond front opening edges.) Press waistband out, pressing seam toward waistband.



54. On OUTSIDE, press remaining ends of carriers over large dots on upper edge of waistband bringing raw edges even. Baste in place.



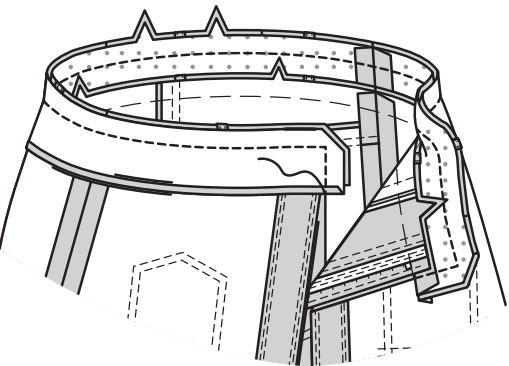
55. With RIGHT sides together and raw edges even, pin bodice to upper edge of waistband (over carriers), matching centers, seams, and notches. Baste. (Front ends of waistband will extend 5/8" (1.5cm) beyond front opening edges.)



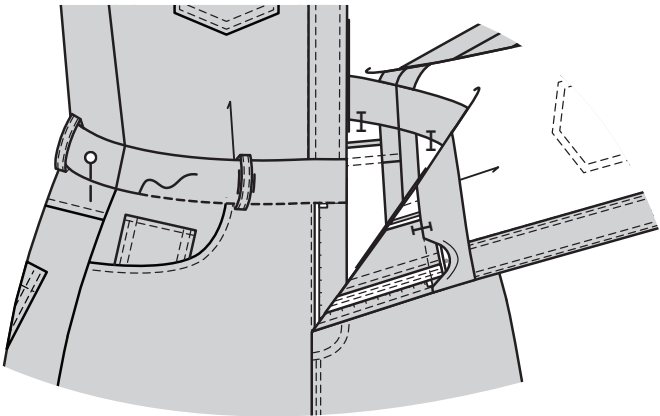
56. Stitch ends of waistband facing sections together in the same manner as waistband.

Press under a generous 1/2" (1.3cm) on lower edge of waistband facing. Trim to 1/4" (6mm).

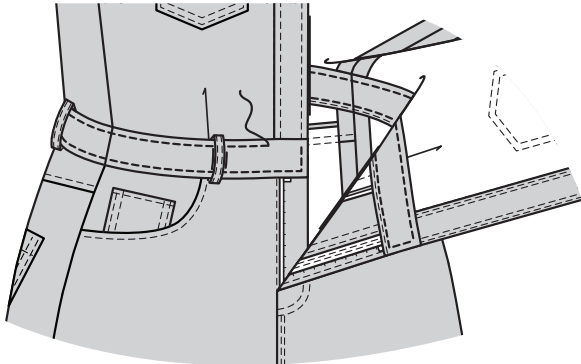
On OUTSIDE, pin upper edge of waistband facing to upper edge of waistband (over bodice), matching centers, seams, and notches. Stitch upper edge and ends through all thicknesses. Trim seam and corners.



57. Turn waistband facing to INSIDE; press, pressing out bodice. On INSIDE, pin pressed edge of facing over seam, placing pins on OUTSIDE. On OUTSIDE, stitch in the ditch of the seam, catching in pressed edge of facing on the INSIDE.

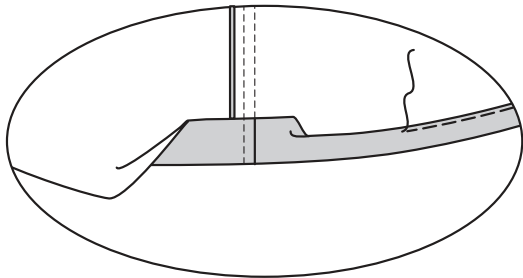


58. On OUTSIDE, topstitch waistband 1/4" (6mm) from seams and finished edges, squaring stitching at front edges, breaking stitching between carriers.



FINISHING

59. Press up 5/8" (1.5cm) hem allowance. To form narrow hem, tuck under raw edge to meet crease. Press. Stitch hem in place.



NOTE: Heavy-duty snaps are made up of four parts. The female side, cap goes on the OUTSIDE of the LEFT front and socket goes on INSIDE of LEFT front. Also, the front of cuff. Lap left front edge over right matching centers. The male side, post goes on the OUTSIDE of the RIGHT front and stud goes on INSIDE of RIGHT front.

60. Make heavy-duty snap openings on collar band, front band, waistband, and cuff sections at small dots using an awl, OR by cutting small holes with an embroidery scissors, OR by using snap pliers with a cone punch and round die base. Apply snaps following manufacturer's directions.

TIP – Practice applying snaps on a fabric remnant before applying to dress.

