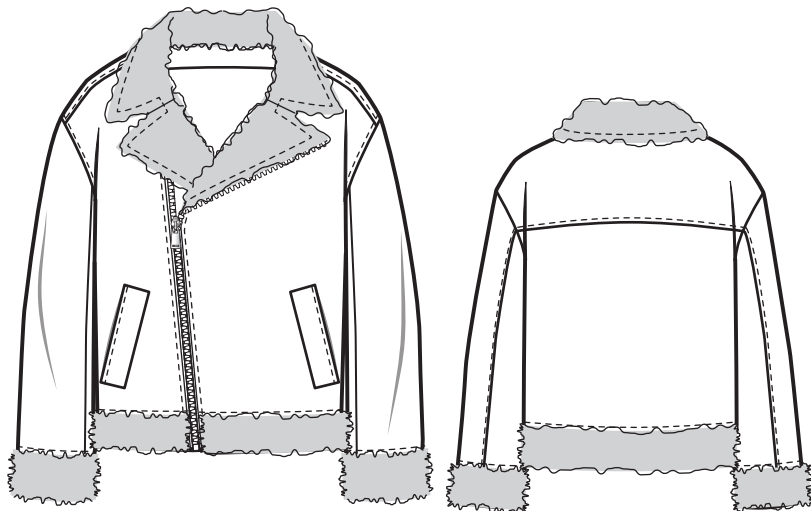
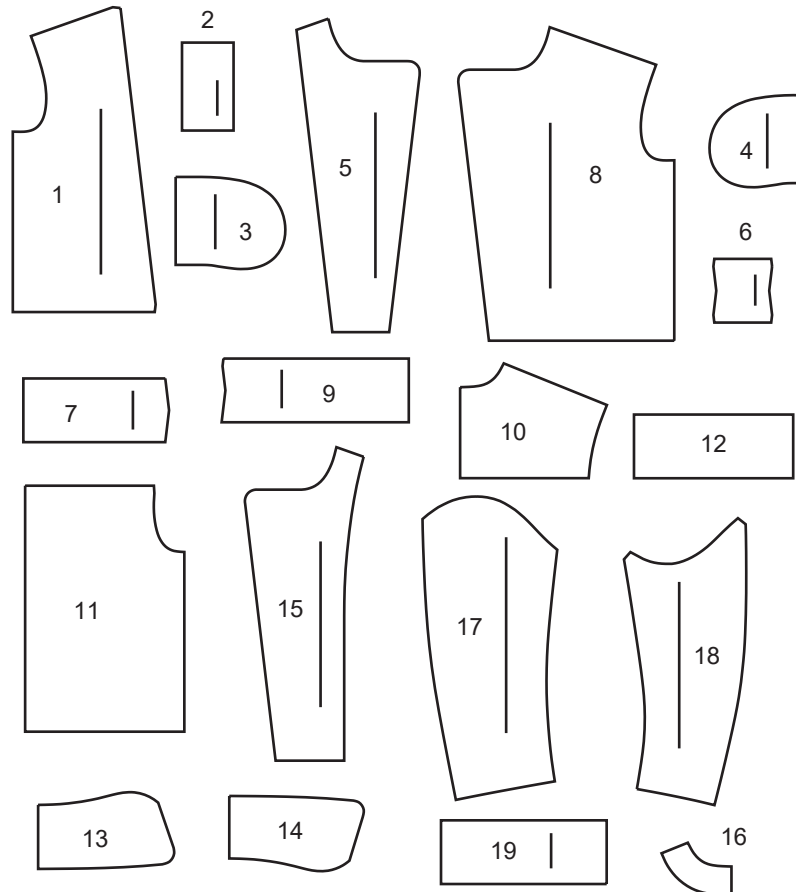


@brittanyjjones



19 PATTERN PIECES



- 1 RIGHT SIDE FRONT
- 2 WELT
- 3 POCKET
- 4 POCKET FACING
- 5 RIGHT FRONT
- 6 FRONT BAND
- 7 LOWER RIGHT FRONT BAND
- 8 LEFT FRONT
- 9 LOWER LEFT FRONT BAND
- 10 YOKE BACK
- 11 BACK
- 12 LOWER BACK BAND
- 13 UPPER COLLAR
- 14 UNDER COLLAR
- 15 FRONT FACING
- 16 BACK FACING
- 17 UPPER SLEEVE
- 18 UNDER SLEEVE
- 19 SLEEVE BAND

PATTERN MARKINGS

- GRAINLINE:** Place on straight grain of fabric, parallel to selvage or fold.
- FOLDLINE:** Place line on fold of fabric.
- BUTTONHOLE MARKING:** Indicates exact length and placement of buttonholes.
- BUTTON MARKING:** Indicates button placement.
- NOTCHES AND SYMBOLS:** For matching seams and construction details.
- Indicates the Bustline, Waistline, Hip and/or Biceps. Measurements refer to circumference of Finished Garment (Body Measurement + Wearing Ease + Design Ease). Adjust pattern if necessary. The measurement excludes pleats, tucks, darts and seam allowances.
- SEAM ALLOWANCE:** 5/8" (1.5cm) included unless otherwise indicated, but not printed on tissue.

ADJUST IF NECESSARY

- Lengthen or Shorten at adjustment lines (==) or where indicated on pattern. If substantial length is added, you may need to purchase additional fabric.
- TO SHORTEN:** Crease along adjustment line. Make a fold half the amount needed. Tape in place.
- TO LENGTHEN:** Slash between adjustment lines. Spread amount as needed, keeping edges parallel. Tape over paper.
- When Alteration lines are not on tissue, lengthen or shorten at lower edge.

CUTTING AND MARKING

- SHRINK FABRIC** if not labeled pre-shrunk. Press.
- CIRCLE LAYOUT** for View, Size, Fabric Width.
- Use **WITH NAP** layout for fabrics with one-way designs, nap, pile or surface shading. Because most knits have surface shading, a with nap layout is used.
- For **DOUBLE THICKNESS (WITH FOLD)** - fold fabric with right sides together.
- * DOUBLE THICKNESS (WITHOUT FOLD)** - For fabrics with nap, fold fabric crosswise, right sides together. Mark as shown. Cut along crosswise fold of fabric (A). Turn upper layer 180° so arrows go in same direction and place over lower layer, right sides together (B).
- For **SINGLE THICKNESS** - place fabric right side up. (For Fur Pile fabrics, place pile side down.)
- ★ Cut other pieces first, allowing enough fabric to cut this piece. Open fabric. For "Cut 1" pieces, cut piece once on single layer of fabric with piece face up on right side of fabric.
- Pattern may have cutting lines for several sizes. Select the proper cutting line or pattern pieces for your size.
- Before **CUTTING** place all pieces on fabric according to layout. Pin. (**Layouts show approximate position of pattern pieces; position may vary according to your pattern size.**) Cut **ACCURATELY**, cutting notches outward.
- Before removing pattern, **TRANSFER MARKINGS** and lines of construction to Wrong Side of fabric, using the Pin and Chalk Pencil method or Tracing Paper and Dressmaker Wheel. Markings needed on right side of fabric should be thread traced.
- NOTE:** Broken-line boxes (a! b! c!) in layouts represent pieces cut by measurements provided.

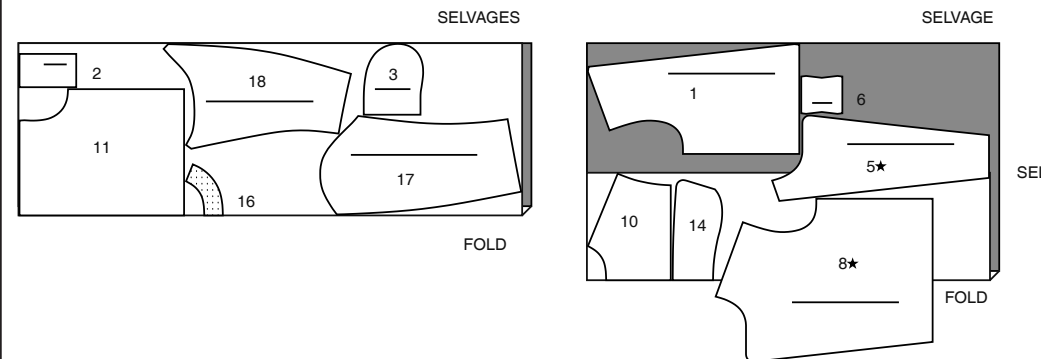
CUTTING LAYOUTS

NOTE: FOR FAUX LEATHER FABRIC. PLACE PINS WITHIN SEAM ALLOWANCE OR USE MASKING TAPE. DO NOT USE A TRACING WHEEL TO TRANSFER MARKING.

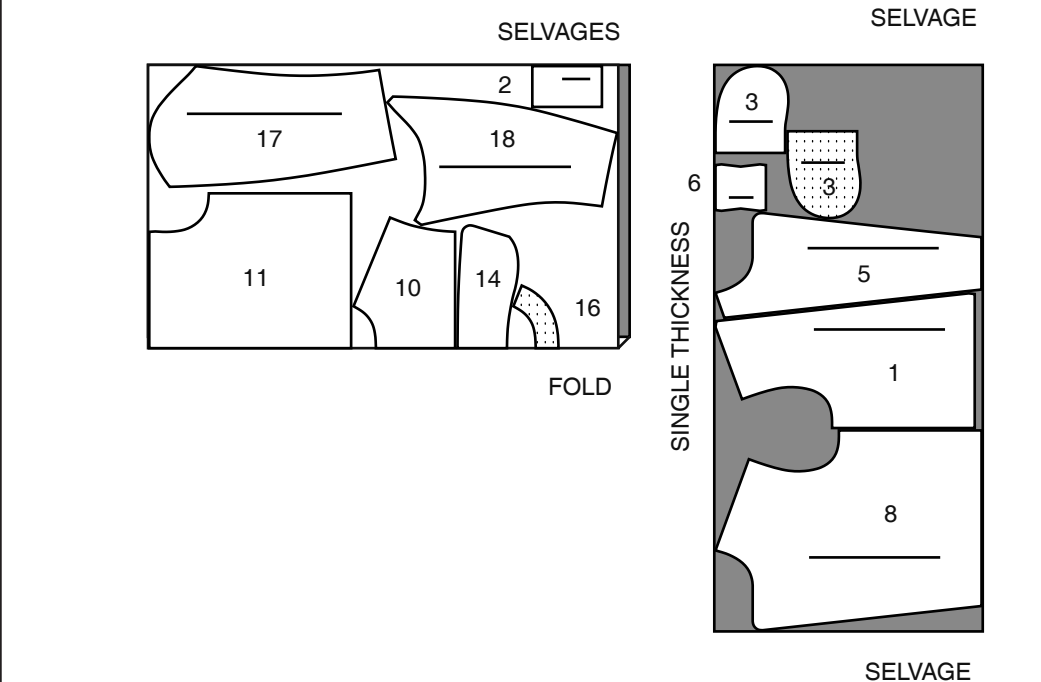
JACKET

USE PIECES: 1 2 3 5 6 8 10 11 14 16 17 18

45" (115 CM)
WITH NAP
ALL SIZES



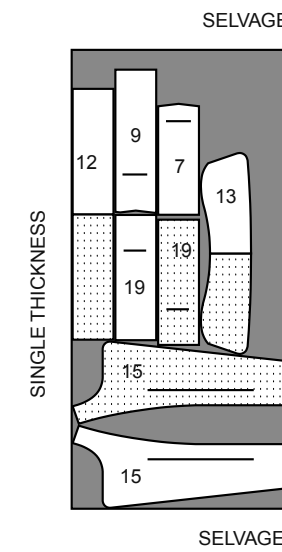
60" (150 CM)
WITH NAP
ALL SIZES



CONTRAST (LOWER BANDS, UPPER COLLAR, FRONT FACINGS, SLEEVE BANDS)

USE PIECES: 7 9 12 13 15 19

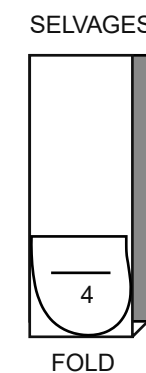
60" (150CM)
WITH NAP
ALL SIZES



LINING

USE PIECE: 4

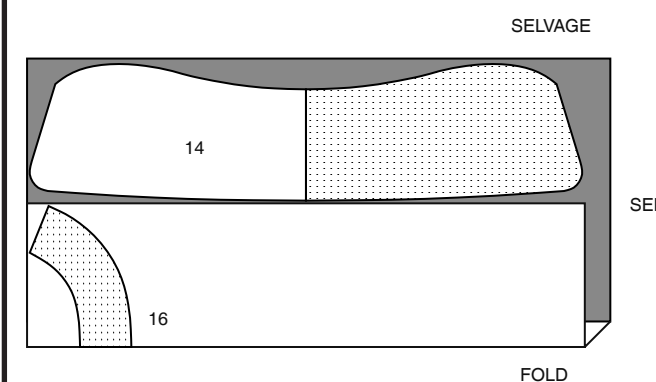
45" (115 CM)
WITH NAP
ALL SIZES



INTERFACING

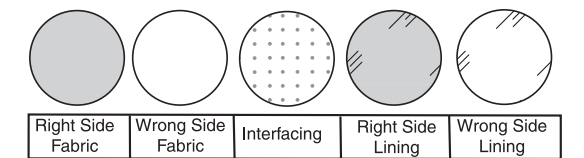
USE PIECES: 14 16

20" (51CM)
ALL SIZES



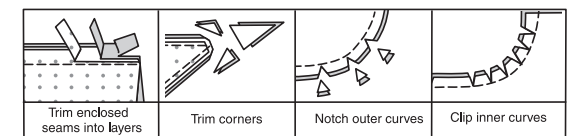
SEWING INFORMATION

FABRIC KEY



SEAM ALLOWANCES

Use 5/8" (1.5cm) seam allowances unless otherwise indicated.



PIN AND FIT

Pin or baste seams, **RIGHT SIDE TOGETHER**, matching notches. Fit garment before stitching major seams.

PRESS

Press seam allowances flat; then open unless otherwise stated. Clip where necessary so they lie flat.

GLOSSARY

GLOSSARY OF SEWING METHODS

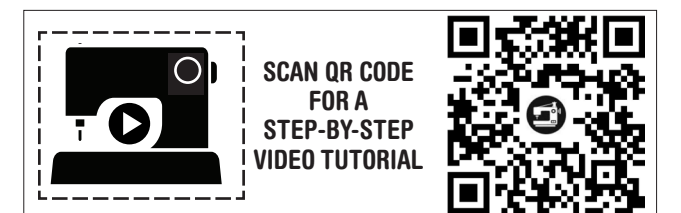
Sewing methods shown in **BOLD** are defined below:

STAY-STITCH - Stitch 1/2" (1.3cm) from cut edge in direction of arrows. This stitching stays in permanently to prevent stretching on curved edges. (Shown only in the first illustration.)

TRIM SEAM - Trim seam in layers to reduce bulk. Clip curves and corners.

PATTERN PIECES WILL BE IDENTIFIED BY NUMBERS THE FIRST TIME THEY ARE USED.

STITCH 5/8" (1.5CM) SEAMS WITH RIGHT SIDES TOGETHER UNLESS OTHERWISE STATED.



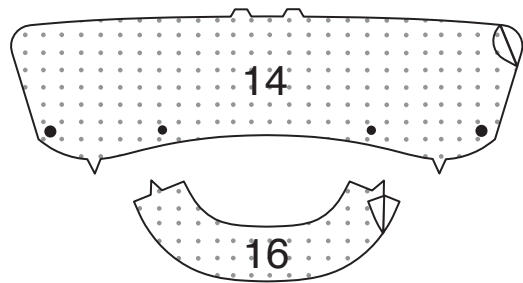
@brittanyjjones

SEWING DIRECTIONS

JACKET

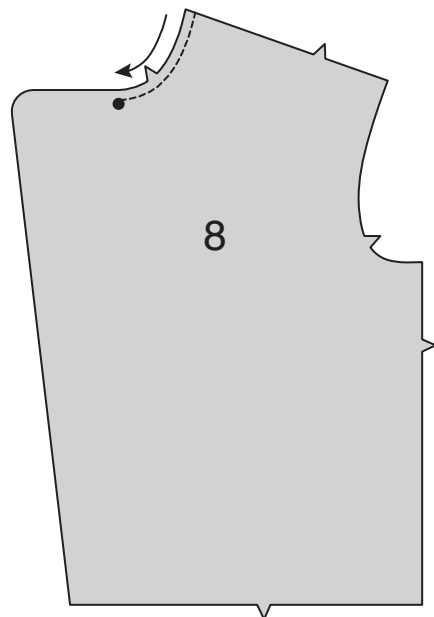
INTERFACING

1. Pin interfacing to WRONG side of UNDER COLLAR (14) and BACK FACING (16). Fuse interfacing in place following manufacturer's directions.

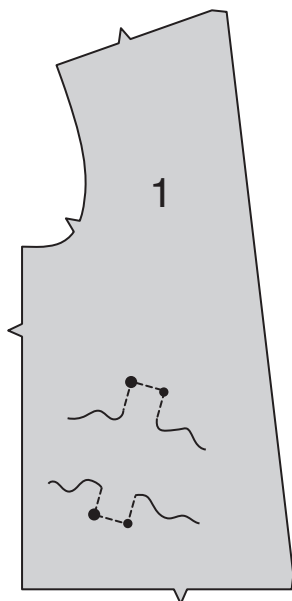


FRONT WELT AND POCKET

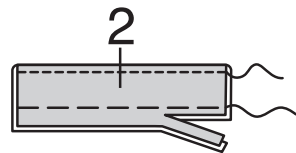
2. **STAY-STITCH** neck edge of LEFT FRONT (8) from shoulder edge to inner large dot in the direction of the arrow.



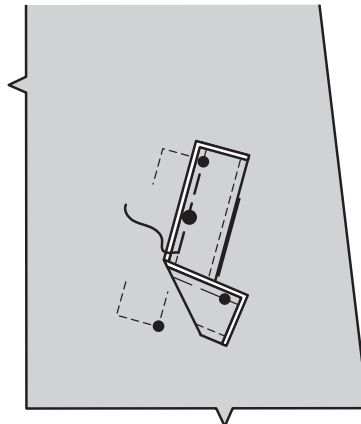
3. To reinforce RIGHT SIDE FRONT (1) (shown) and left front at small and large dots for welt, stitch along seam line for about 1" (2.5cm) each side of small and large dots, pivoting with needle in fabric, stitching through dots, as shown.



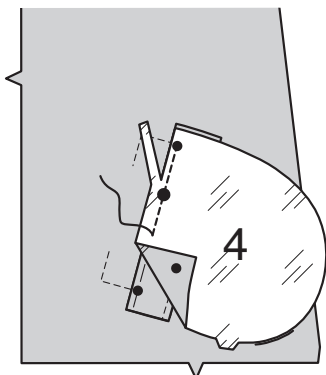
4. Fold WELT (2) in half, along foldline with WRONG sides together and raw edges even. Press. Topstitch 1/4" (6mm) from pressed edge. Baste along seamline. Trim seam allowances on long edge to 1/4" (6mm).



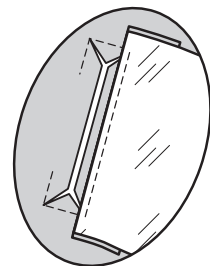
5. On OUTSIDE, pin welt to right front (shown) and left front, placing seamline along front stitching line, matching dots. Baste between small dots.



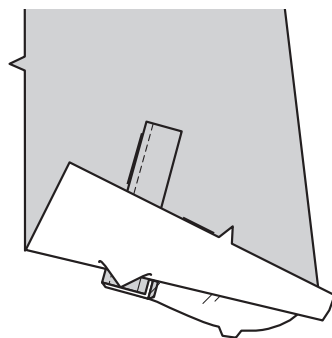
6. With RIGHT sides together, pin POCKET FACING (4) to front (over welt), matching dots. Stitch along previous basting between small dots, back-stitching at dots to reinforce the seam. Trim seam allowance on long edge to 1/4" (6mm).



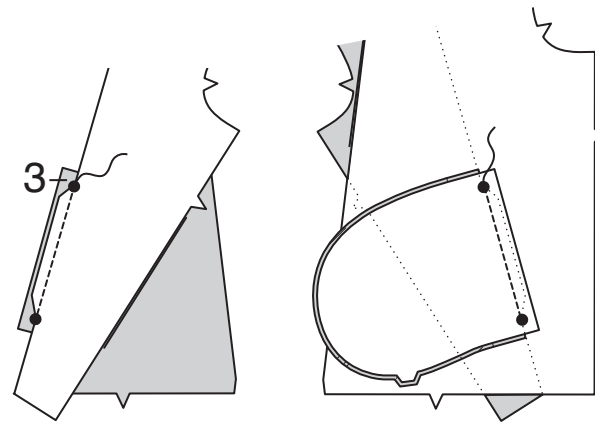
7. Slash along slash line and diagonally to corners, being careful not to cut through welt or facing.



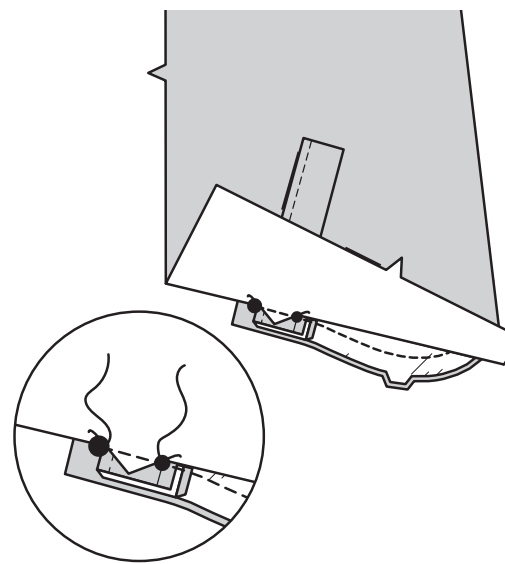
8. Turn lining and triangular ends to INSIDE, pulling out ends of welt between triangular ends, as shown. Press lining away from welt.



9. Turn side edge of front to OUTSIDE at large dots, having RIGHT sides of front together. Pin POCKET (3) to front at side stitching line, matching large dots. Stitch along seam line between large dots.



10. With RIGHT sides together, pin pocket to facing/welt, matching small and large dots. Stitch side and inner edge of pocket and facing together between the large dots, catching in welts and triangular ends, keeping front free.

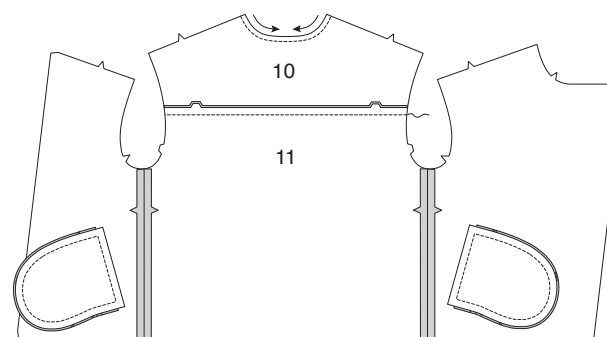


BACK

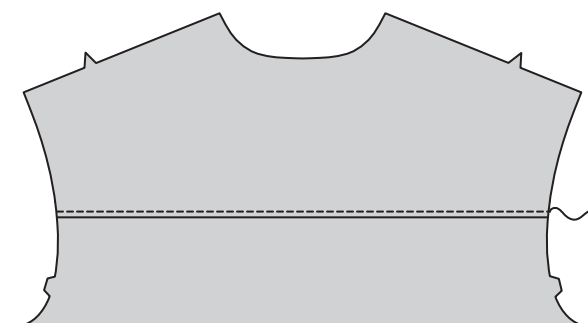
11. **STAY-STITCH** neck edge of YOKE BACK (10) in the direction of the arrows.

With RIGHT sides together and raw edges even, pin lower edge of yoke to upper edge of BACK (11), matching centers and notches. Stitch. Press seam toward yoke.

Stitch side front and left front to back at side edges.



12. On OUTSIDE, topstitch yoke back 1/4" (6mm) from seam.

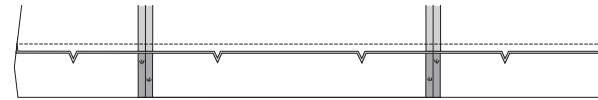


LOWER BANDS

13. Stitch LOWER RIGHT FRONT BAND (7) and LOWER LEFT FRONT BAND (9) to LOWER BACK BAND (12) at ends.

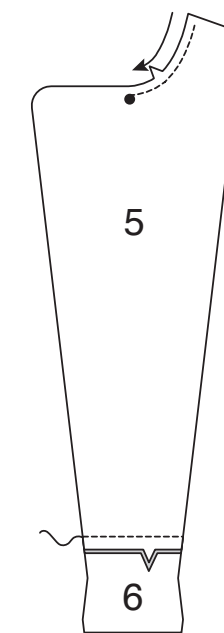


14. With RIGHT sides together and raw edges even, pin upper edge of lower band to lower edge of jacket, matching centers, seams and notches. Stitch. **TRIM SEAM.** Press seam toward band, pressing band out.



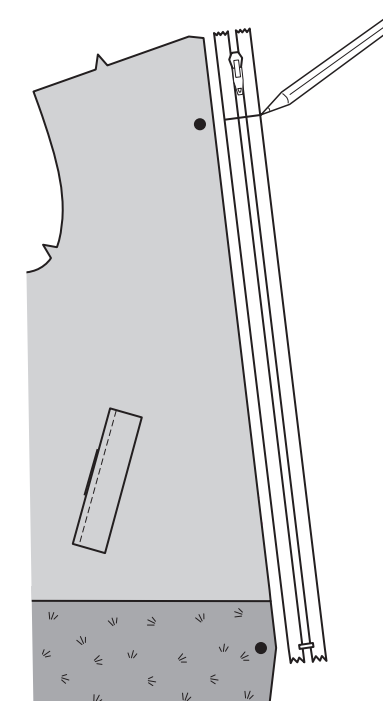
15. **STAY-STITCH** neck edge of RIGHT FRONT (5) from shoulder edge to inner large dot in the direction of the arrow.

With RIGHT sides together and raw edges even, pin upper edge of FRONT BAND (6) to lower edge of right front, matching centers and notches. Stitch. **TRIM SEAM.** Press seam toward band, pressing band out.

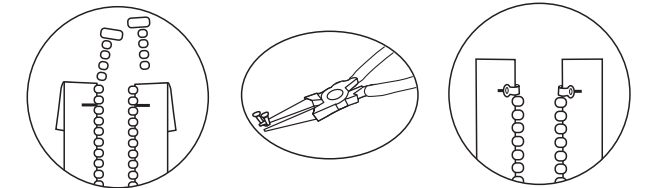


ZIPPER

NOTE: Always shorten Separating Zippers from the top.
16. To adjust the length of your Separating Zipper, measure front opening edge between large dots on right side front and lower right front band. Mark the desired length on the zipper tape, measuring from the lower edge of the bottom stop. With the zipper pull well below the mark, cut off extra zipper 1" (2.5cm) above mark. Do not discard the pieces.



17. Remove zipper teeth above mark. Using pliers, pry the top-stops open and remove them from the discarded pieces of zipper. Reinstall top stops by crimping them in place immediately above the last remaining tooth.

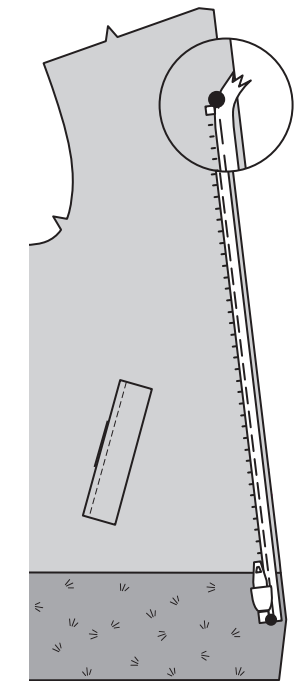


18. Separate zipper.

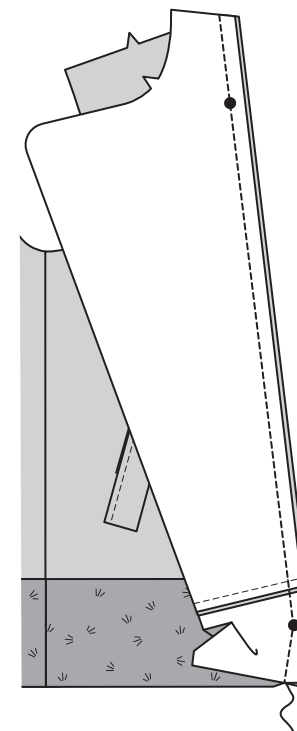
On OUTSIDE, pin slider side of zipper, face down onto RIGHT SIDE FRONT opening edge, with lower end of zipper at large dot, tape within the seam allowance with inner edge of zipper teeth extending 1/16" (1.5mm) past the seamline.

Taper upper end of zipper tape into the seam allowance, as shown. Baste.

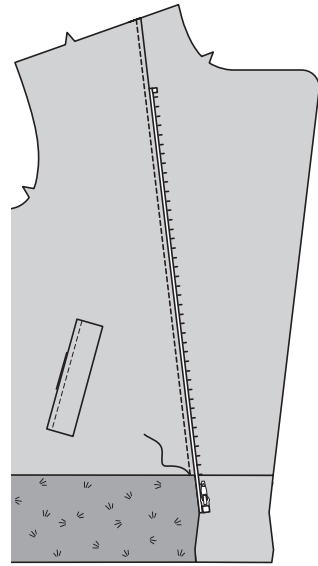
TIP - To avoid bumpy stitching around the tab and slider, stop stitching just before you get to the slider. Leaving the needle in the fabric, raise the presser foot and pull the slider down below the needle. Lower the presser foot and continue stitching.



19. With RIGHT sides together and raw edges even, pin right front to right side front along side front edges (over zipper), matching large dots. Stitch from shoulder edge to lower edge of band. Clip to stitching at lower large dot. Press seam toward side front.

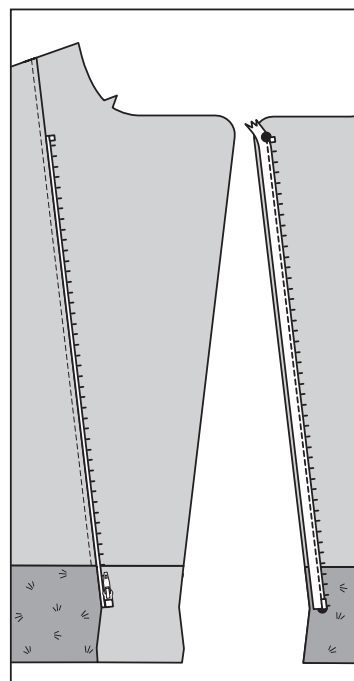


20. On OUTSIDE, topstitch side front 1/4" (6mm) from seam from shoulder edge to upper edge of band.



21. On OUTSIDE, pin remaining side of zipper, face down onto the LEFT FRONT opening edge in same manner as for side front. Make sure that both sides of zipper are aligned. Baste.

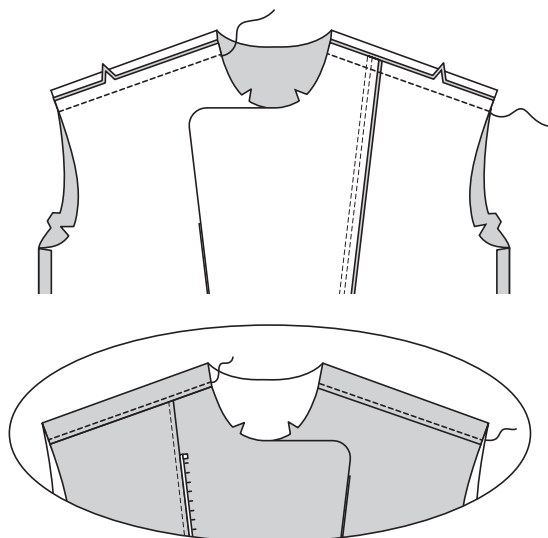
Using an adjustable zipper foot, stitch zipper in place 5/8" (1.5cm) from the raw edges.



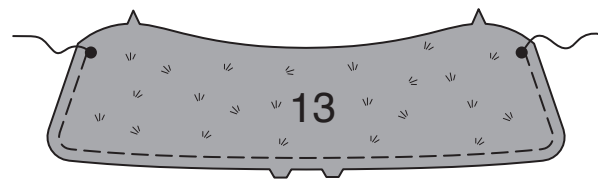
COLLAR AND FACING

22. Stitch front to back at shoulder edges. Press seam toward back.

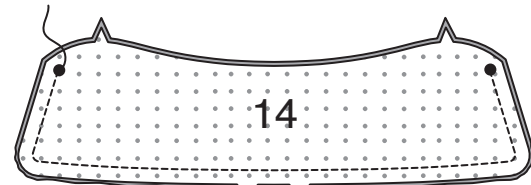
On OUTSIDE, topstitch yoke 1/4" (6mm) from shoulder seam.



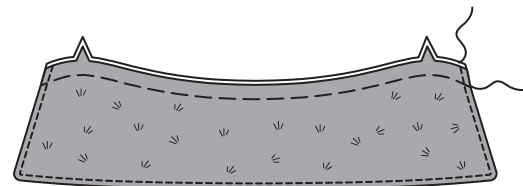
23. To ease double notched edge of UPPER COLLAR (13) between the large dots, loosen needle tension slightly. On OUTSIDE, stitch 1/2" (1.3cm) from cut edge using a long stitch.



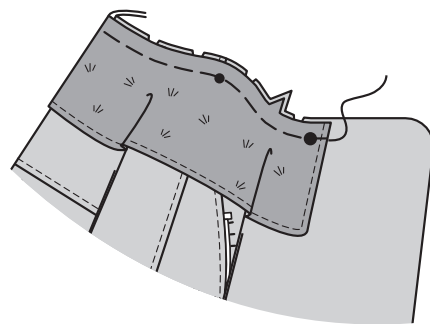
24. With RIGHT sides together and raw edges even, pin upper collar to UNDER COLLAR (14), matching large dots and double notched edge, pulling up ease stitches to fit. Stitch double notched edge between large dots. **TRIM SEAM.**



25. Turn collar; press. Baste raw edges together. On OUTSIDE, topstitch collar 1/4" (6mm) from finished edge.

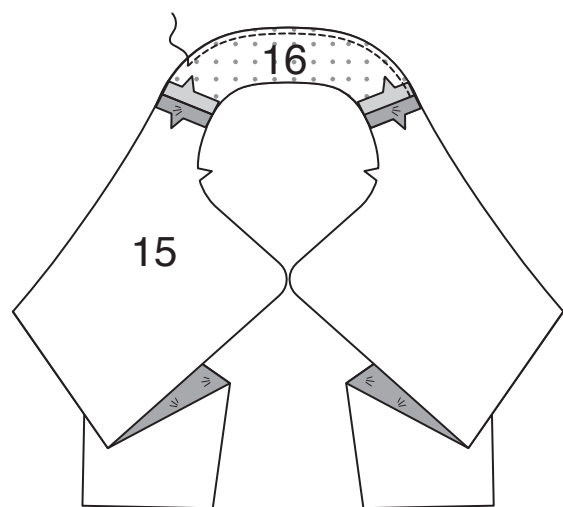


26. Clip neck edge of jacket to staystitching between the large dots. On OUTSIDE, pin collar (under collar side) to jacket, matching large dots and notches, placing inner small dot at shoulder seam. Baste.

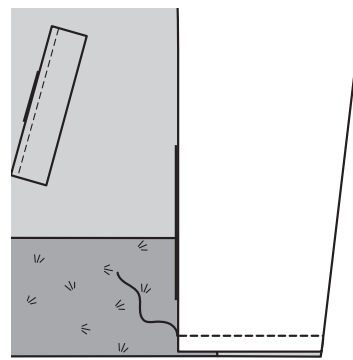


27. To finish lower edge of BACK FACING (16), stitch 1/4" (6mm) from edge, turn under edge along stitching and stitch, OR zigzag stitch or overlock raw edges.

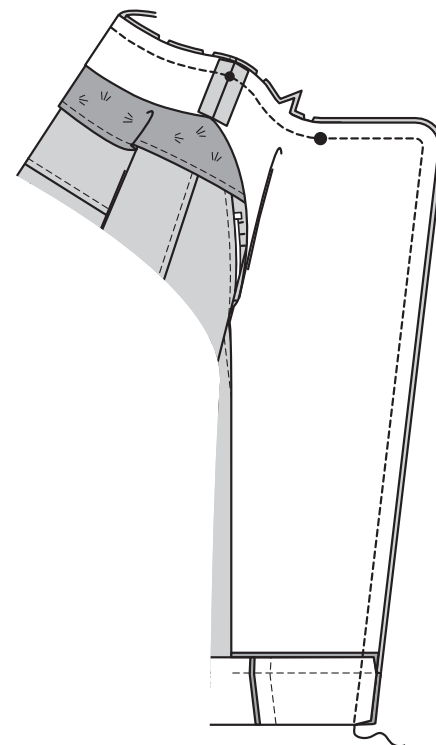
Stitch back facing to FRONT FACING (15) at shoulder edges.



28. With RIGHT sides together and raw edges even, pin lower edge of front facing to lower edge of lower bands. **Note:** Edge of facing will extend beyond band seam. Stitch. Press seam away from band.



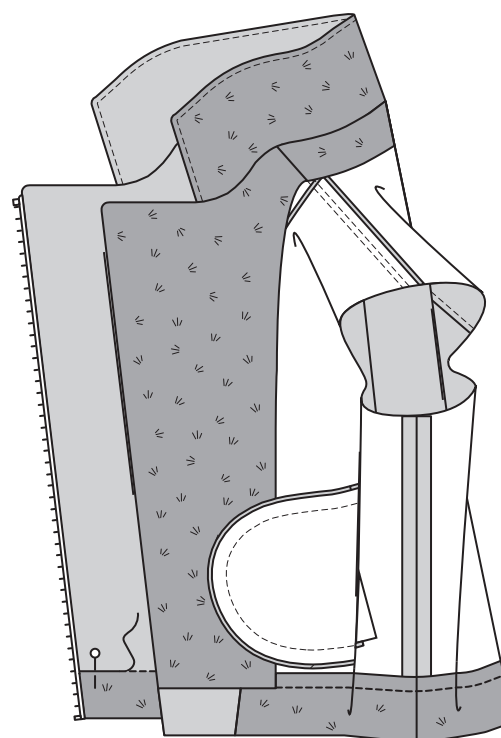
29. Fold bands to OUTSIDE along foldline. With RIGHT sides together and raw edges even, pin facing to jacket, along front, neck, and band edges, matching centers, seams, large dots and notches. Stitch. **TRIM SEAM.**



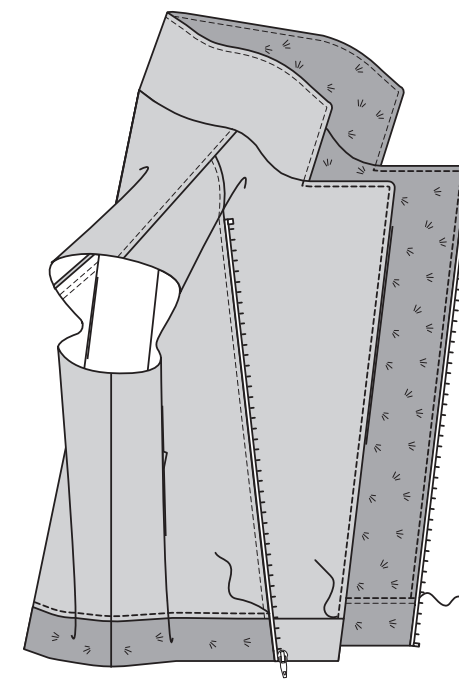
30. Turn facing to INSIDE; press, pressing out collar.

Press band facing to INSIDE along foldline.

On INSIDE, pin raw edge of band over seam, placing pins on OUTSIDE. On OUTSIDE, stitch in the ditch of the seam from front edge of left front to side front edge of right side front, catching in raw edge of band facing on the INSIDE.

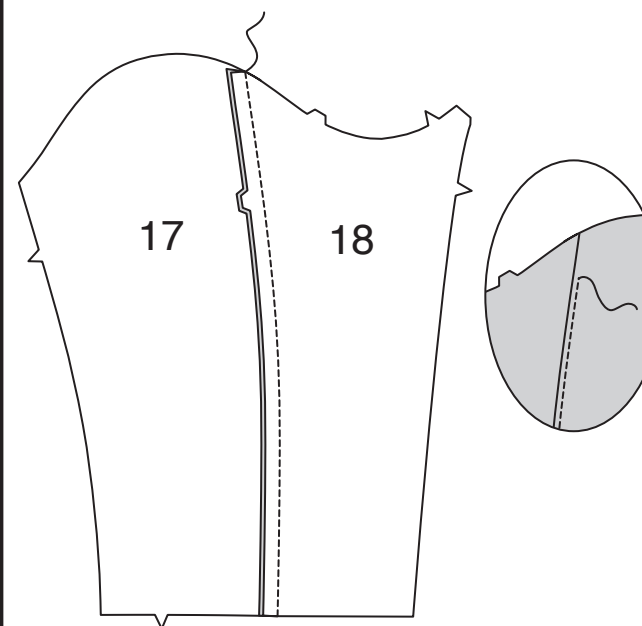


31. On OUTSIDE, topstitch 1/4" (6mm) from previous ditch stitching. Topstitch 1/4" (6mm) from left front and lapel edge to upper edge of band, squaring stitching at collar. Topstitch 1/4" (6mm) from right front and lapel edge to lower edge of band, squaring stitching at collar.

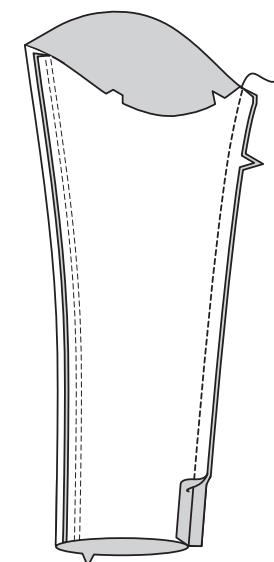


SLEEVE

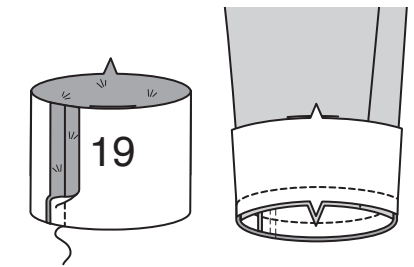
32. With RIGHT sides together and raw edges even, pin UPPER SLEEVE (17) to UNDER SLEEVE (18) along double notched edge, matching notches. Press seam toward upper sleeve. On OUTSIDE, topstitch upper sleeve 1/4" (6mm) from seam.



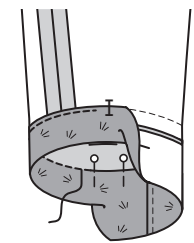
33. With RIGHT sides together and raw edges even, pin upper sleeve to undersleeve along single notched edge, matching notches. Press seam open.



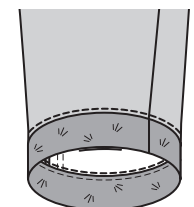
34. Stitch ends of SLEEVE BAND (19). On OUTSIDE, pin upper edge of sleeve band to lower edge of sleeve, matching seams and notches. Stitch. Press seam toward band, pressing band out.



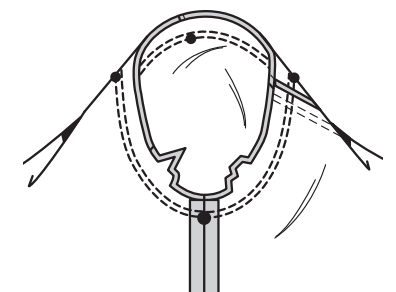
35. Turn sleeve band to INSIDE along foldline; press. On INSIDE, pin raw edge of band over seam, placing pins on OUTSIDE. On OUTSIDE, stitch in the ditch of the seam, catching in raw edge of band facing on the INSIDE.



36. On OUTSIDE, topstitch sleeve 1/4" (6mm) from previous ditch stitching.



37. Turn sleeve RIGHT side out. Hold jacket WRONG side out with armhole toward you. With RIGHT sides together, pin sleeve to armhole edge with center small dot at shoulder seam and large dot at side seam, matching notches and remaining small dots. Baste. Stitch. Stitch again 1/8" (3mm) from first stitching. Trim seam below notches close to stitching. Press only the seam allowance, shrinking out fullness.



38. On OUTSIDE, topstitch front and back 1/4" (6mm) from armhole seam.

