

For customers outside of the U.S. and Canada

sewdirect.com

sewdirect.com.au

Shop all the pattern brands you love @

Simplicity.com



BEAUTE' J'ADORE  
**knowME**  
BY MIMI G

ME2129



A B



A B

Scan QR code for a Sew-Along video tutorial.



@beautejadore

Designed and printed in USA

Average											
MISSES' BODYSUIT AND DRESS											
<b>Suggested Fabrics:</b> A in Stretch Knits only such as Double Knit, Ponte, Scuba. See Stretch Gauge. <b>B:</b> Organza, Mesh, Sheers, Silky Types.											
<b>Notions:</b> A,B: ¼" (6mm) elastic: 1½ yd. (1.8m) for A, ¾ yd. (0.6m) for B. <b>Also for A:</b> One 18" (46cm) invisible zipper, one pkg. of ½" (1.3cm) single fold bias tape. <b>Also for B:</b> Seven ½" (1.3cm) shank buttons.											
Sizes	8	10	12	14	16	18	20	22	24	26	
European	34	36	38	40	42	44	46	48	50	52	
BODY MEASUREMENTS: Select pattern size based on body measurements											
Bust	31½	32½	34	36	38	40	42	44	46	48	Ins.
Waist	24	25	26½	28	30	32	34	37	39	41	"
Hip-9" below waist	33½	34½	36	38	40	42	44	46	48	50	"
Back-neck to waist	15¾	16	16¼	16½	16¾	17	17¼	17½	17¾	18	"
Bodysuit A	60**	1	1	1	1	1½	1½	1½	1½	1½	Yds.
Dress B	45**	3%	3%	3¾	3¾	3¾	4½	4½	4%	4%	Yds.
	60**	2%	2%	2¾	2¾	3	3½	3½	3%	3¾	"
FINISHED GARMENT MEASUREMENTS (Includes Design and Wearing Ease)											
A Bust	32	33	34½	36½	38½	40½	42½	44½	46½	48½	Ins.
B Bust	35	36	37½	39½	41½	43½	45½	47½	49½	51½	"
A Waist	26½	27½	29	31	33	35	37	39	41	43	"
Width, lower edge											
Dress B	60	61	62½	64½	66½	68½	70½	72½	74½	76½	Ins.

\*with nap \*\*without nap

Moins Facile											
BODY ET ROBE POUR JEUNES FEMMES											
<b>Tissus Conseillés:</b> A en Tricot extensibles seulement tels que Tricot double, Ponte, Scuba. Reportez-vous au taux d'élasticité. <b>B:</b> Organza, Filet, Tissus transparents, Types soie.											
<b>Merçerie:</b> A,B: Élastique de 6mm: 1.8m pour A, 0.6m pour B. <b>Aussi pour A:</b> 1 fermeture à glissière invisible de 46cm, 1 paquet de ruban de biais simple de 1.3cm. <b>Aussi pour B:</b> 7 boutons de tige.											
Tailles	8	10	12	14	16	18	20	22	24	26	
Françaises	36	38	40	42	44	46	48	50	52	54	
Européen	34	36	38	40	42	44	46	48	50	52	
MESURES DU CORPS: Choisissez la taille du patron basée sur les mesures du corps											
Poitrine	80	83	87	92	97	102	107	112	117	122	cm
Taille	61	64	67	71	76	81	87	94	99	104	"
Hanches (23cm au-dessous de la taille)	85	88	92	97	102	107	112	117	122	127	cm
Dos du cou à la taille	40	40.5	41.5	42	42.5	43	44	44.5	45	46	"
Body A	150cm*	0.9	0.9	0.9	0.9	0.9	0.9	1.0	1.0	1.0	m
Robe B	115cm*	3.3	3.3	3.3	3.4	3.4	4.1	4.1	4.1	4.2	m
	150cm*	2.4	2.4	2.5	2.6	2.7	3.1	3.2	3.3	3.4	"
MESURES DES VÊTEMENTS FINI (Motif et aisance de port compris)											
A Poitrine	81	84	88	93	98	103	108	113	118	123	cm
B Poitrine	89	91	95	100	105	110	116	121	126	131	"
A Taille	67	70	74	79	84	89	94	99	104	109	"
Largeur à l'ourlet											
Robe B	152	155	159	164	169	174	179	184	189	194	cm

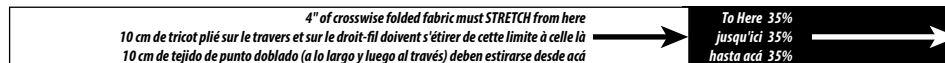
\*avec sens \*\*sans sens



Use the 1 inch (2.54cm) box to ensure you are using rule at 100%.

Utilisez la boîte de 2.54 cm pour vous assurer d'utiliser la règle à 100%.

Utilizar un cuadrado de 2.54 cm para asegurarse de estar usando la regla al 100%.



When using the Pick-A-Knit® rule to measure your fabrics stretch capacity, rule must be viewed or printed at 100%.

Quand vous utilisez le taux d'élasticité pour mesurer la capacité d'élasticité des tissus, le taux doit être visible ou imprimé à 100%.

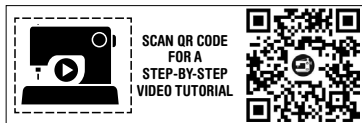
Al utilizar el calibre de elasticidad para medir la capacidad de elasticidad de las telas, el calibre debe estar visible o impreso al 100%.

ME2129

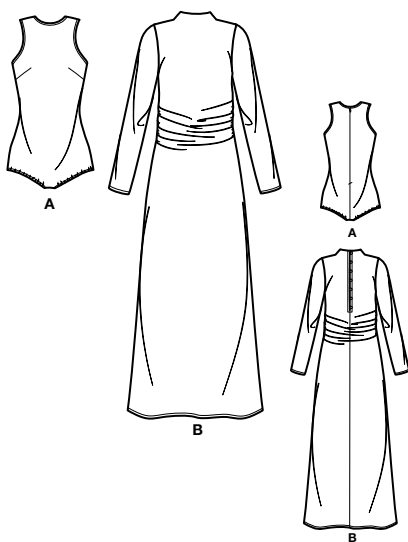
**knowME**  
BY mimi g

Page 1 of 3

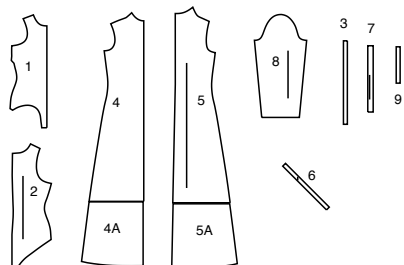
1-800-782-0323



@beautejadore

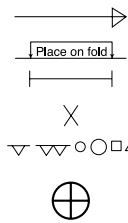


## 9 PATTERN PIECES



- 1 Front-A
- 2 Back-A
- 3 Elastic Guide for Leg-A
- 4 (4A) Front-B
- 5 (5A) Back-B
- 6 Loop-B
- 7 Back Facing-B
- 8 Sleeve-B
- 9 Guide for Elastic-B

## PATTERN MARKINGS



**GRAINLINE:** Place on straight grain of fabric, parallel to selvage or fold.

**FOLDLINE:** Place line on fold of fabric.

**BUTTONHOLE MARKING:** Indicates exact length and placement of buttonholes.

**BUTTON MARKING:** Indicates button placement.

**NOTCHES AND SYMBOLS:** For matching seams and construction details.

Indicates the Bustline, Waistline, Hip and/or Biceps. Measurements refer to circumference of Finished Garment (Body Measurement + Wearing Ease + Design Ease). Adjust pattern if necessary. The measurement excludes pleats, tucks, darts and seam allowances.

**SEAM ALLOWANCE:** 5/8" (1.5cm) included unless otherwise indicated, but not printed on tissue.

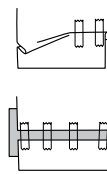
## ADJUST IF NECESSARY

Lengthen or Shorten at adjustment lines (==) or where indicated on pattern. If substantial length is added, you may need to purchase additional fabric.

**TO SHORTEN:** Crease along adjustment line. Make a fold half the amount needed. Tape in place.

**TO LENGTHEN:** Slash between adjustment lines. Spread amount as needed, keeping edges parallel. Tape over paper.

When Alteration lines are not on tissue, lengthen or shorten at lower edge.



## CUTTING AND MARKING

★ Cut other pieces first, allowing enough fabric to cut this piece. Open fabric. For "Cut 1" pieces, cut piece once on single layer of fabric with piece face up on right side of fabric.

Pattern may have cutting lines for several sizes. Select the proper cutting line or pattern pieces for your size.

Before **CUTTING** place all pieces on fabric according to layout. Pin. (**Layouts show approximate position of pattern pieces; position may vary according to your pattern size.**) Cut **ACCURATELY**, cutting notches outward.

Before removing pattern, **TRANSFER MARKINGS** and lines of construction to Wrong Side of fabric, using the Pin and Chalk Pencil method or Tracing Paper and Dressmaker Wheel. Markings needed on right side of fabric should be thread traced.

**NOTE:** Broken-line boxes (at b1 cl) in layouts represent pieces cut by measurements provided.

**SHRINK FABRIC** if not labeled pre-shrunk. Press.

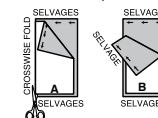
**CIRCLE LAYOUT** for View, Size, Fabric Width.

Use **WITH NAP** layout for fabrics with one-way designs, nap, pile or surface shading. Because most knits have surface shading, a with nap layout is used.

For **DOUBLE THICKNESS (WITH FOLD)** - fold fabric with right sides together.

★ **DOUBLE THICKNESS (WITHOUT FOLD)** - For fabrics with nap, fold fabric crosswise, right sides together. Mark as shown. Cut along crosswise fold of fabric (A). Turn upper layer 180° so arrows go in same direction and place over lower layer, right sides together (B).

For **SINGLE THICKNESS** - place fabric right side up. (For Fur Pile fabrics, place pile side down.)



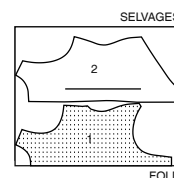
## CUTTING LAYOUTS

RIGHT SIDE OF PATTERN	WRONG SIDE OF PATTERN	RIGHT SIDE OF FABRIC	WRONG SIDE OF FABRIC

## BODYSUIT A

USE PIECES: 1 2

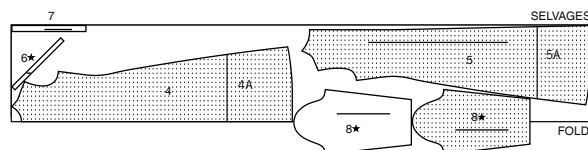
60" (150CM)  
WITH NAP  
ALL SIZES



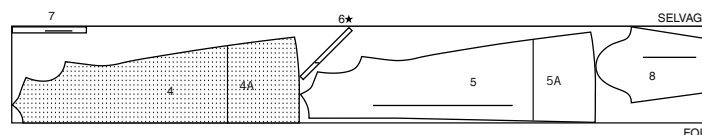
## DRESS B

USE PIECES: 4 5 6 7 8

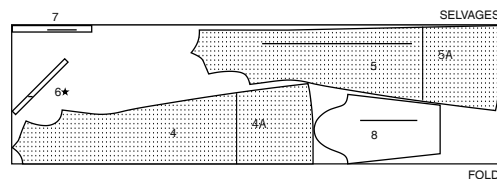
45" (115CM)  
WITH NAP  
SIZES 8 10 12 14 16



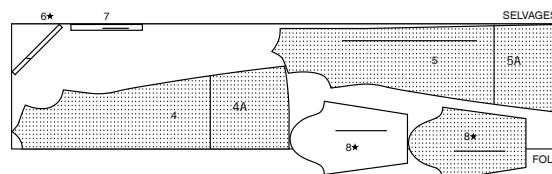
45" (115CM)  
WITH NAP  
SIZES 18 20 22 24 26



60" (150CM)  
WITH NAP  
SIZES 8 10 12 14 16

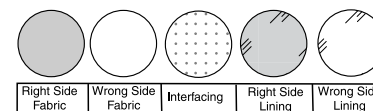


60" (150CM)  
WITH NAP  
SIZES 18 20 22 24 26



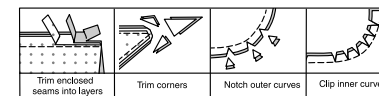
## SEWING INFORMATION

## FABRIC KEY



## SEAM ALLOWANCES

Use 5/8" (1.5cm) seam allowances unless otherwise indicated.



## PIN AND FIT

Pin or baste seams, **RIGHT SIDE TOGETHER**, matching notches. Fit garment before stitching major seams.

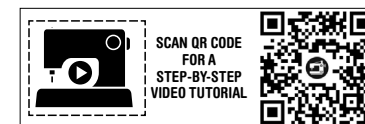
## PRESS

Press seam allowances flat; then open unless otherwise stated. Clip where necessary so they lie flat.

## GLOSSARY

**PATTERN PIECES WILL BE IDENTIFIED BY NUMBERS THE FIRST TIME THEY ARE USED.**

**STITCH 5/8" (1.5CM) SEAMS WITH RIGHT SIDES TOGETHER UNLESS OTHERWISE STATED.**



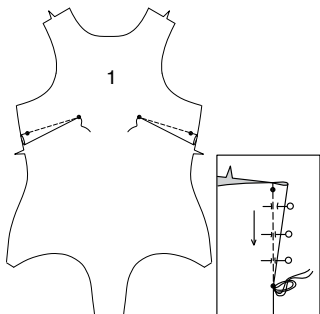
@beautejadore

# SEWING DIRECTIONS

## BODYSUIT A

**1.** To make dart in FRONT (1), with RIGHT sides together, fold the fabric through the center of the dart, bringing broken lines and small dots together. On INSIDE, place pins at RIGHT angles to the broken lines. Stitch the dart from wide end to point. Press the dart flat along the stitching to "blend" the stitches, then press dart down.

**TIP** – To prevent a "bubble" at the point, make the last few stitches right on the fold and leave the thread ends long enough to tie a knot. DO NOT back-stitch at the point.

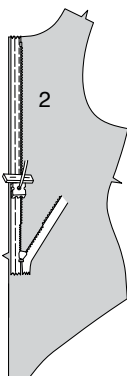


**NOTE:** The zipper may be longer than the zipper opening and will be adjusted after the zipper is inserted.

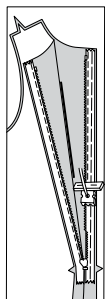
**NOTE:** Stitch the invisible zipper using an invisible zipper foot. Before you begin, be sure to line up your needle with the center of the invisible zipper foot or you may break your needle. When the coils are to the LEFT of the raw edge use the LEFT groove and when the coils are to the RIGHT of the raw edge use the RIGHT groove.

**2.** Open the zipper and press the tape flat on the WRONG side unrolling the coils. Do not press the coils. (Use a low iron setting.)

On OUTSIDE, pin RIGHT side of the zipper face down on the RIGHT BACK (2) section along center back edge with the coil along the seam line, the tape within the seam allowance, and the top stop a generous 3/8" (1cm) below upper edge, as shown. Hand-baste along center of the tape. Position zipper foot at the top of the zipper with RIGHT groove of the foot over coil. Stitch along tape to the notch. Back-stitch to reinforce.

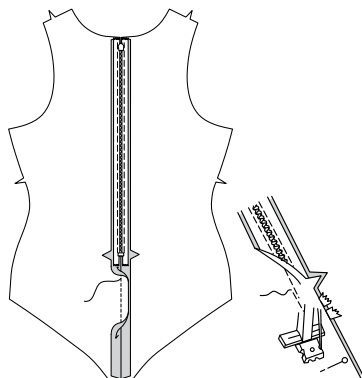


**3.** Pin the remaining half of the zipper to the LEFT back section in same manner. Make sure the upper and lower edges of the backs are even. Hand-baste along the center of the tape. Position zipper foot at the top of the zipper with LEFT groove over the coil. Stitch along tape to the notch. Back-stitch to reinforce.

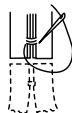


**4.** Close zipper and check that it is invisible from the OUTSIDE.

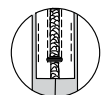
Pull the free ends of the zipper tape away from the seam allowance. Pin remaining center back seam together below zipper. Position zipper foot all the way to the LEFT so the needle goes down through the outer notch of the foot. Start stitching seam 1/4" (6mm) above lowest stitch and slightly to the LEFT. Stitch seam for about 3" (7.5cm). Stitch remainder of seam using your regular presser foot.



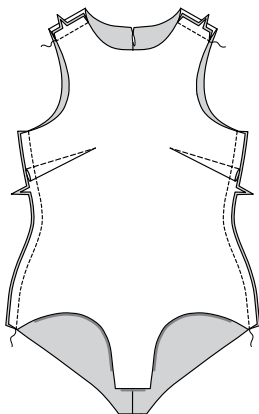
**5.** If the zipper is longer than the opening, using a strong thread, hand-sew a few small stitches across ends of coils at end of opening. Trim away lower end of zipper tape to within 5/8" (1.5cm) of hand-stitches.



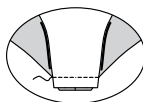
**6.** If you prefer, open out each seam allowance at end of zipper and stitch tape to seam allowance.



**7.** With RIGHT sides together and raw edges even, pin front to back at shoulder edges and side edges, matching notches. Stitch.



**8.** With RIGHT sides together and raw edges even, pin front to back at lower edge. Stitch.

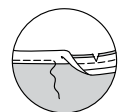


**9.** Cut a piece of bias tape the length of the neck edge, plus 3/4" (2cm). Open out one edge of the tape; press.

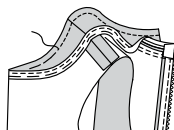
With RIGHT sides together, pin tape to neck edge with raw edges even, matching centers. (Tape extends 3/8" (1cm) beyond opening edges.) Stitch upper edge in a 3/8" (1cm) seam. Trim seam; clip curves.



**10.** Understitch the tape, by pressing bias tape and seam away from bodysuit, and stitching through tape and seam allowances close to seam.

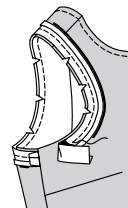


**11.** Turn in ends of tape. Turn tape to INSIDE; press. Baste close to inner pressed edge of tape. On OUTSIDE, topstitch as basted.



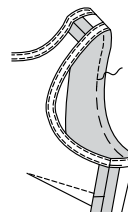
**12.** Cut a piece of bias tape the length of each armhole edge, plus 3/4" (2cm). Open out one edge of the tape; press.

With RIGHT sides together, pin tape to armhole edge with raw edges even, turning under and lapping one end at side seam. Stitch in a 3/8" (1cm) seam. Trim seam; clip curves.

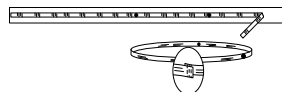


**13.** Understitch the tape in the same manner as for neckline.

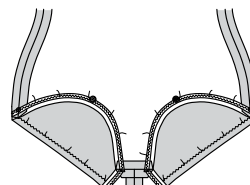
Turn tape to INSIDE; press. Baste close to inner pressed edge of tape. On OUTSIDE, topstitch as basted.



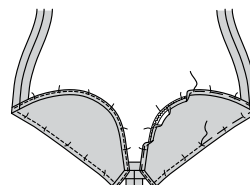
**14.** Cut elastic for each for leg, using ELASTIC GUIDE FOR LEG (3). Transfer markings. Stitch ends of elastic together along 5/8" (1.5cm) markings with several rows of machine-stitching.



**15.** On INSIDE, pin elastic to leg edge with outer edge of elastic a scant 3/8" (1cm) from raw edge, matching seam of elastic with crotch seam, matching large dots, and placing small dot at side seam. Stitch, using a wide zigzag or stretch stitch, stretching elastic to fit.



**16.** Turn raw leg edges to INSIDE 1/4" (6mm), partially encasing the elastic. Turn clean edge to INSIDE again along seamline. Baste close to inner edge. On OUTSIDE, topstitch as basted.

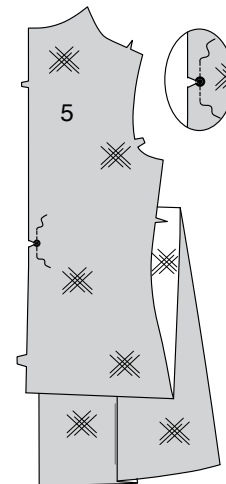


## DRESS B

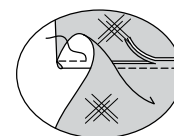
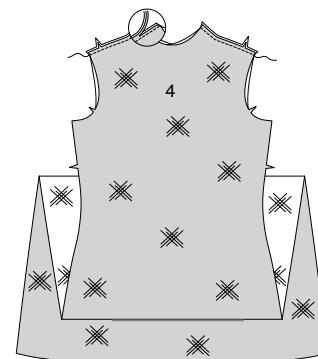
**NOTE:** This dress is stitched using French seams, as instructed in Sewing Directions. If you prefer, you may stitch using standard seams, stitched with RIGHT sides together, pressed open, and finished with your preferred method.

## FRONT AND BACK

**1.** To reinforce BACK (5) at the large dot, stitch along seamline for about 1" (2.5cm) each side of the dot, stitching through dot, as shown. Clip to stitching at dot.

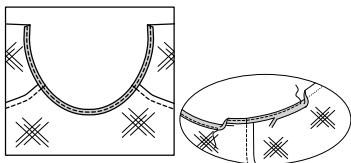


**2.** Pin FRONT (4) to back at shoulder edges with WRONG sides together. To make a French seam, stitch within the seam allowance 1/4" (6mm) from seamline. Trim close to stitching. Turn fabric to RIGHT sides together and stitch through seamline encasing the first trimmed seam, as shown.



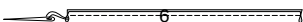
- 3.** Press shoulder French seam toward back.

To make a designer narrow hem, press under 1/4" (6mm) on neck edge. Stitch close to pressed edge. Trim close to stitching. Press under another 1/8" (3mm) and stitch in place.



### LOOPS

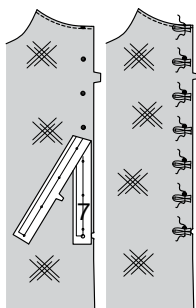
- 4.** To make back loops, fold LOOP (6) in half, lengthwise, with RIGHT sides together. Stitch a generous 1/4" (6mm) from fold edge, stretching loop while stitching. Trim seam close to stitching. With a needle, attach a strong thread to one end of loop.



- 5.** Draw needle eye forward, through fold, turning loop RIGHT side out. Cut seven loops each 2-1/4" (5.7cm) long.

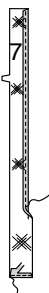


- 6.** Fold loops, bringing ends together. Using the BACK FACING (7) as a guide, transfer small dots to back opening along seamline. On OUTSIDE, pin loops to LEFT back edge just under the small dots with raw edges even. Baste along seamline.

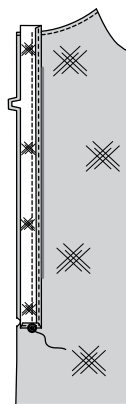


### BACK FACING

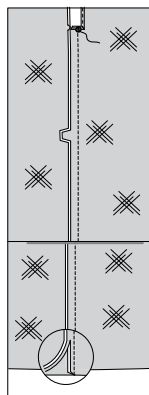
- 7.** Press under 1/4" (6mm) on unnotched edge of BACK FACING (7). Stitch close to pressed edge. Press under lower edge along 5/8" (1.5cm) seamline. Stitch close to pressed edge. Trim to 1/4" (6mm).



- 8.** With RIGHT sides together and raw edges even, pin facing to back, matching small dots, large dots, and notches. Stitch from neck edge to large dot, backstitching at large dot to reinforce the seam. Trim seam.

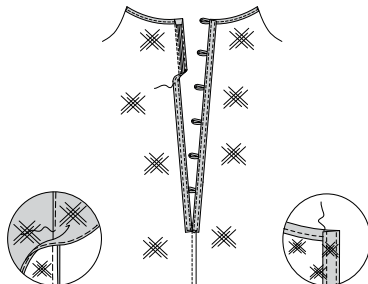


- 9.** Stitch center back edges of back from lower edge to large dot in a French seam. Press seam to one side.



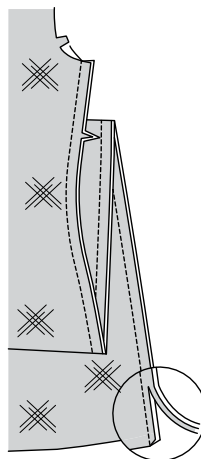
- 10.** To understitch the facing, press facing and seam away from dress, stitching through facing and seam allowances close to seam.

Turn facing to INSIDE; press, pressing under upper edge. Slipstitch facing to neck edge, invisibly.



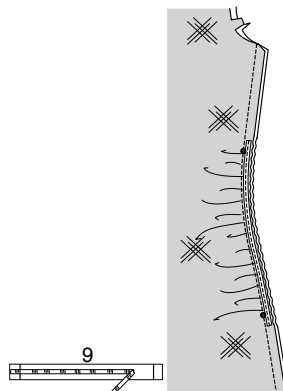
### SIDE RUCHING

- 11.** Pin front to back at side edges with WRONG sides together. To make a French seam, stitch within the seam allowance 1/4" (6mm) from seamline. Trim seam to 1/4" (6mm).

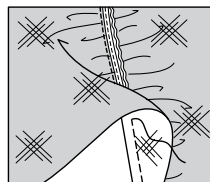


- 12.** Open out the garment, pressing seam to one side.

For each side seam, cut a piece of elastic the length of the GUIDE FOR ELASTIC (9), and transfer markings. On OUTSIDE, pin elastic close to seam within remaining seam allowance, placing ends of elastic 5/8" (1.5cm) above and below small dots. Stitch in place through center of elastic, stretching elastic to fit.

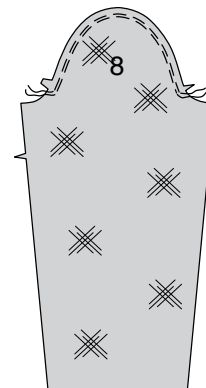


- 13.** Turn fabric to RIGHT sides together and stitch through seamline encasing the elastic and first trimmed seam, as shown. Press seams toward back.

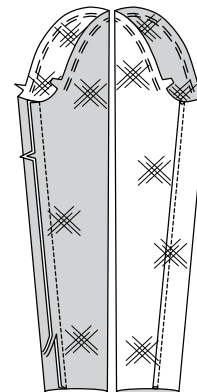


### SLEEVE

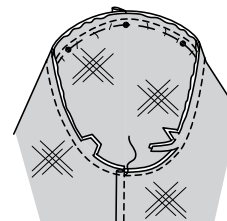
- 14.** To ease upper edge of SLEEVE (8) between the notches, loosen needle tension slightly. On OUTSIDE, stitch 5/8" (1.5cm) from cut edge using a long stitch. Stitch again 1/8" (3mm) from the first stitching within the seam allowance.



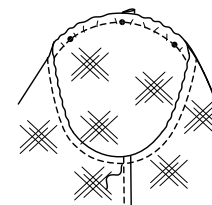
- 15.** Pin underarm edges of sleeve, matching notches. Stitch in a French seam. Press seam toward back.



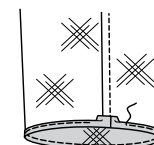
- 16.** To make a French seam, turn sleeve WRONG side out. Hold garment RIGHT side out with armhole toward you. With WRONG sides together, pin sleeve to armhole edge with center small dot at shoulder seam, matching underarm seams, notches and remaining small dots, pulling up ease stitches, distributing fullness evenly, until there are no puckers or tucks on the seamline. Stitch within the seam allowance 1/4" (6mm) from seamline. Trim close to stitching.



- 17.** Turn fabric to RIGHT sides together, stitch through seamline encasing the first trimmed seam, as shown.

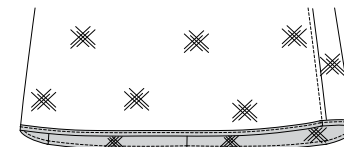


- 18.** Press under 5/8" (1.5cm) hem allowance. To form a narrow hem, turn under raw edge to meet crease; press. Stitch close to inner pressed edge.

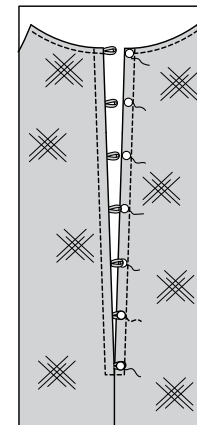


### FINISHING

- 19.** Narrow hem dress in the same manner as sleeve.



- 20.** Bring back edges of dress together, matching centers. Sew buttons to RIGHT back under loops.





# Congrats!

You've completed your sewing adventure

---

## SHARE YOUR LOOK



Post your pattern and tag us using [#knowMepatterns](#)  
[@simplicity\\_creative\\_group](#)  
[@simplicitymccallsuk](#)  
[@simplicitymccallsaustralia](#)  
for a chance to be featured on our social media.

Look for more PDF patterns at [simplicity.com](#) or for customers outside the U.S. and Canada visit [sewdirect.com](#) and [sewdirect.com.au](#)

Have a question or need help with your sewing project contact us:  
[Simplicity.com](#)    [Sewdirect.com](#)    [Sewdirect.com.au](#)

