

For customers outside of the U.S. and Canada

sewdirect.com

sewdirect.com.au

Shop all the pattern brands you love @

Simplicity®.com

KEECHII B STYLE

knowME™  
BY mimi g

ME2127



Scan QR code for a Sew-Along video tutorial.

@keechiibstyle

Designed and printed in USA

Average											
MISSES' AND WOMEN'S TOP WITH DETACHABLE SLEEVES AND SHORTS											
Suggested Fabrics: Cotton Blends, Double Knit, Gabardine, Lightweight Denim, Linen Blends, Ponte, Twill.											
Lining: Cotton Blends, Polyester Blends. Interfacing: Lightweight Fusible.											
Notions: A: One ½" (1.3cm) button. B: One 7" (18cm) zipper (cut to fit), one hook and bar.											
Sizes	10	12	14	16	18	20W	22W	24W	26W	28W	
European	36	38	40	42	44	46	48	50	52	54	
BODY MEASUREMENTS: Select pattern size based on body measurements											
Bust	32½	34	36	38	40	42	44	46	48	50	Ins.
Waist	25	26½	28	30	32	35	37	39	41½	44	"
Hip-9" below waist	34½	36	38	40	42	44	46	48	50	52	"
Back-neck to waist	16	16¼	16½	16¾	17	17¼	17½	17¾	18	18½	"
Top A	45**	1¾	1¾	1¾	1¾	2	2	2	2	2	Yds.
	60**	1¼	1¼	1¼	1¾	1¾	1¾	1¾	1¾	1¾	"
Contrast (Upper Front and Back, Loop)											
	45**	¾	¾	¾	¾	¾	¾	¾	¾	¾	Yds.
	60**	½	½	½	½	½	½	¾	¾	¾	"
Lining	45***	1¾	1¾	1¾	1¾	1¾	1¾	1¾	1¾	1¾	"
Contrast Lining - purchase the same amount as for Contrast - 45**											
Interfacing	20" - ¾ yd.										
Shorts B	45**	1¾	1¾	1¾	1¾	1¾	1¾	1¾	1¾	2	Yds.
	60**	1	1	1¾	1¾	1¾	1¾	1¾	1¾	1½	"
Contrast (Front and Back Band)											
	45, 60** - ¾ yd.										
Lining	45*** - 1½ yds.										
Interfacing	20" - 1 yd.										
FINISHED GARMENT MEASUREMENTS (Includes Design and Wearing Ease)											
A Bust	41	42½	44½	46½	48½	51	53	55	57	59	Ins.
B Waist	27	28½	30½	32½	34½	37	39	41	43	45	"
B Hip	42	43½	45½	47½	49½	51½	53½	55½	57½	59½	"
Finished back length from base of neck											
Top A	17½	17¾	18	18¼	18½	20¼	20½	20¾	21	21¼	Ins.
Finished side length from waist											
Shorts B	14	14¼	14½	14¾	15	15	15¼	15½	15¾	16	Ins.

\*with nap \*\*without nap

Moins Facile

HAUT À MANCHES AMOVIBLES ET SHORT POUR JEUNES FEMMES ET FEMMES

Tissus Conseillés: Cotonnades, Tricot double, Gabardine, Denim Léger, Lin mélangés, Ponte, Twill. Doublure: Cotonnades, Mélanges de polyester. Entoilage: Thermocollant léger.

Mercerie: A: 1 bouton de 1.3cm. B: 1 fermeture à glissière de 18cm (coupée pour ajuster), 1 crochet.

Tailles	10	12	14	16	18	20W	22W	24W	26W	28W	
Françaises	38	40	42	44	46	48	50	52	54	56	
Européen	36	38	40	42	44	46	48	50	52	54	

MESURES DU CORPS: Choisissez la taille du patron basée sur les mesures du corps

Poitrine	83	87	92	97	102	107	112	117	122	127	cm
Taille	64	67	71	76	81	89	94	99	105	112	"

Hanches (23cm au-dessous de la taille)

88	92	97	102	107	112	117	122	127	132	cm
Dos du cou à la taille	40.5	41.5	42	42.5	43	44	44.5	45	45	"

Haut A

115cm*	1.6	1.6	1.6	1.6	1.8	1.8	1.8	1.8	1.8	m
150cm*	1.1	1.1	1.1	1.1	1.1	1.3	1.3	1.3	1.3	"

Contraste (Devant et dos supérieur, Briede)

115cm*	0.7	0.7	0.7	0.7	0.7	0.7	0.7	0.7	0.7	m
150cm*	0.5	0.5	0.5	0.5	0.5	0.5	0.5	0.6	0.7	"

Doublure

115cm**	1.0	1.0	1.0	1.0	1.0	1.3	1.3	1.3	1.3	"
---------	-----	-----	-----	-----	-----	-----	-----	-----	-----	---

Doublure contraste - achetez la même quantité que pour le contraste - 115cm\*

Entoilage 51cm - 0.3m

Short B

115cm*	1.0	1.0	1.0	1.3	1.3	1.6	1.6	1.6	1.7	1.7	m
150cm*	0.9	0.9	1.0	1.0	1.0	1.1	1.1	1.3	1.3	1.4	"

Contrast (Bande devant et dos)

115, 150cm\* - 0.7m

Doublure 115cm\*\* - 0.5m

Entoilage 51cm - 1.1m

MESURES DES VÊTEMENTS FINI (Motif et aisance de port compris)

A Poitrine	104	108	113	118	123	130	135	140	145	150	cm
B Taille	69	72	77	83	88	94	99	104	109	114	"
B Hanches	107	110	116	121	126	131	136	141	146	151	"

Longueur finie – dos, votre nuque à l'ourlet

Haut A

44	45	46	46	47	51	52	53	53	53	cm
----	----	----	----	----	----	----	----	----	----	----

Longueur finie – côté, taille à l'ourlet

Short B

36	36	37	37	38	38	39	39	40	41	cm
----	----	----	----	----	----	----	----	----	----	----

\*sans nap \*\*sans nap



A



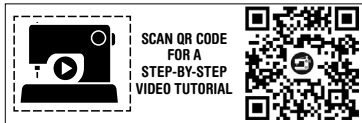
A



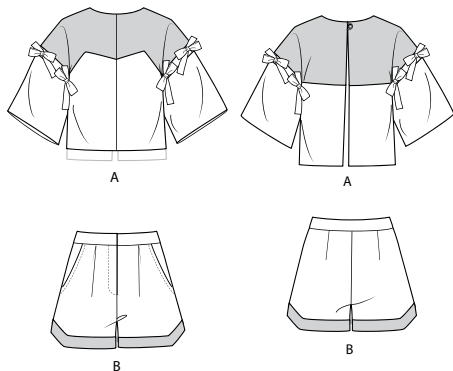
B



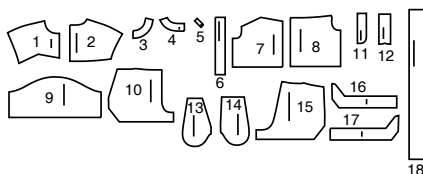
B



@keechiibstyle



18 PATTERN PIECES



- 1 Upper Front-A
- 2 Upper Back-A
- 3 Front Interfacing-A
- 4 Back Interfacing-A
- 5 Loop-A
- 6 Tie End-A
- 7 Lower Front-A
- 8 Lower Back-A
- 9 Sleeve-A
- 10 Front-B
- 11 Right Fly Facing-B
- 12 Left Fly-B
- 13 Pocket Facing-B
- 14 Side Front and Pocket-B
- 15 Back-B
- 16 Front Band-B
- 17 Back Band-B
- 18 Waistband-B

**PATTERN MARKINGS**

**GRAINLINE:** Place on straight grain of fabric, parallel to selvage or fold.

**FOLDLINE:** Place line on fold of fabric.

**BUTTONHOLE MARKING:** Indicates exact length and placement of buttonholes.

**BUTTON MARKING:** Indicates button placement.

**NOTCHES AND SYMBOLS:** For matching seams and construction details.

Indicates the Bustline, Waistline, Hip and/or Biceps. Measurements refer to circumference of Finished Garment (Body Measurement + Wearing Ease + Design Ease). Adjust pattern if necessary. The measurement excludes pleats, tucks, darts and seam allowances.

**SEAM ALLOWANCE:** 5/8" (1.5cm) included unless otherwise indicated, but not printed on tissue.

**ADJUST IF NECESSARY**

Lengthen or Shorten at adjustment lines (==) or where indicated on pattern. If substantial length is added, you may need to purchase additional fabric.

**TO SHORTEN:** Crease along adjustment line. Make a fold half the amount needed. Tape in place.

**TO LENGTHEN:** Slash between adjustment lines. Spread amount as needed, keeping edges parallel. Tape over paper.

When Alteration lines are not on tissue, lengthen or shorten at lower edge.

**CUTTING AND MARKING**

★ Cut other pieces first, allowing enough fabric to cut this piece. Open fabric. For "Cut 1" pieces, cut piece once on single layer of fabric with piece face up on right side of fabric.

Pattern may have cutting lines for several sizes. Select the proper cutting line or pattern pieces for your size.

Before **CUTTING** place all pieces on fabric according to layout. Pin. (**Layouts show approximate position of pattern pieces; position may vary according to your pattern size.**) Cut **ACCURATELY**, cutting notches outward.

Before removing pattern, **TRANSFER MARKINGS** and lines of construction to Wrong Side of fabric, using the Pin and Chalk Pencil method or Tracing Paper and Dressmaker Wheel. Markings needed on right side of fabric should be thread traced.

**NOTE:** Broken-line boxes (at b! cl) in layouts represent pieces cut by measurements provided.

**SHRINK FABRIC** if not labeled pre-shrunk. Press.

**CIRCLE LAYOUT** for View, Size, Fabric Width.

Use **WITH NAP** layout for fabrics with one-way designs, nap, pile or surface shading. Because most knits have surface shading, a with nap layout is used.

For **DOUBLE THICKNESS (WITH FOLD)** - fold fabric with right sides together.

\* **DOUBLE THICKNESS (WITHOUT FOLD)** - For fabrics with nap, fold fabric crosswise, right sides together. Mark as shown. Cut along crosswise fold of fabric (A). Turn upper layer 180° so arrows go in same direction and place over lower layer, right sides together (B).

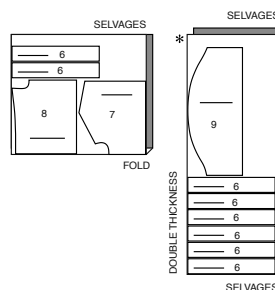
For **SINGLE THICKNESS** - place fabric right side up. (For Fur Pile fabrics, place pile side down.)

CUTTING LAYOUTS

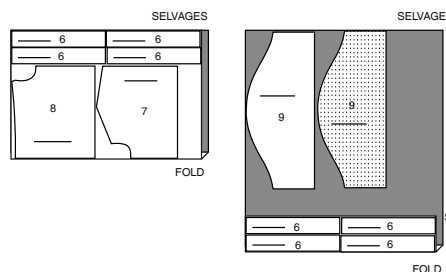
RIGHT SIDE OF PATTERN	WRONG SIDE OF PATTERN	RIGHT SIDE OF FABRIC	WRONG SIDE OF FABRIC
-----------------------	-----------------------	----------------------	----------------------

**TOP A**  
USE PIECES 6 7 8 9

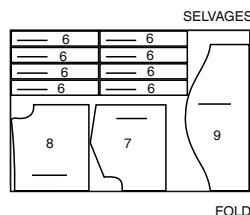
45" (115cm)  
WITH NAP  
SIZES 10 12 14 16 18



45" (115cm)  
WITH NAP  
SIZES 20W 22W 24W 26W 28W

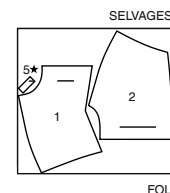


60" (150cm)  
WITH NAP  
ALL SIZES



**CONTRAST A**  
USE PIECES 1 2 5

45" (115cm)  
WITH NAP  
ALL SIZES

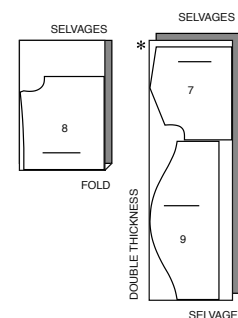


60" (150cm)  
WITH NAP  
ALL SIZES



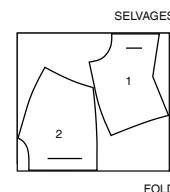
**LINING A**  
USE PIECES 7 8 9

45" (115cm)  
WITHOUT NAP  
ALL SIZES



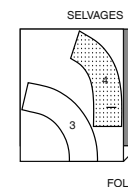
**CONTRAST LINING A**  
USE PIECES 1 2

45" (115cm)  
WITH NAP  
ALL SIZES



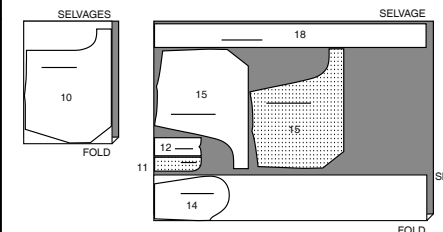
**INTERFACING A**  
USE PIECES 3 4

20" (51cm)  
ALL SIZES

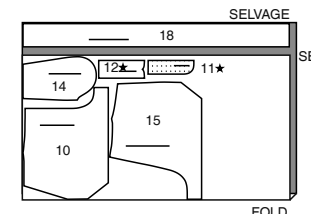


**SHORTS B**  
USE PIECES 10 11 12 14 15 18

45" (115cm)  
WITH NAP  
ALL SIZES

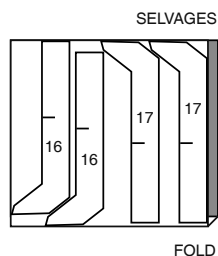
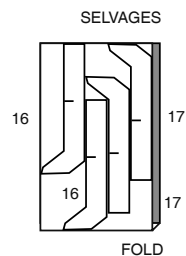


60" (150cm)  
WITH NAP  
ALL SIZES

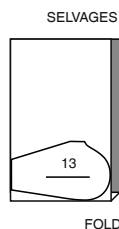


**CONTRAST B**

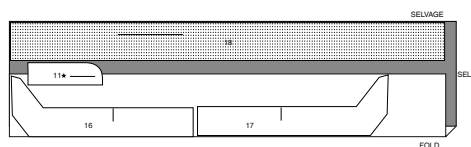
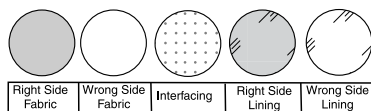
USE PIECES 16 17

45" (115cm)  
WITH NAP  
ALL SIZES60" (150cm)  
WITH NAP  
ALL SIZES**LINING B**

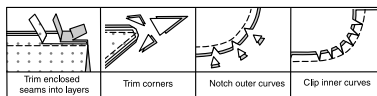
USE PIECE 13

45" (115cm)  
WITHOUT NAP  
ALL SIZES**INTERFACING B**

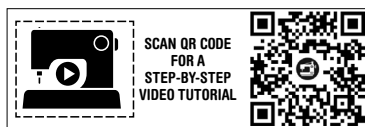
USE PIECES 11 16 17 18

20" (51cm)  
ALL SIZES**SEWING INFORMATION****FABRIC KEY****SEAM ALLOWANCES**

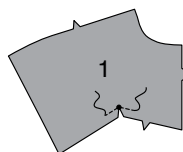
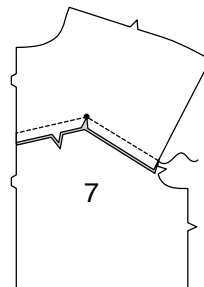
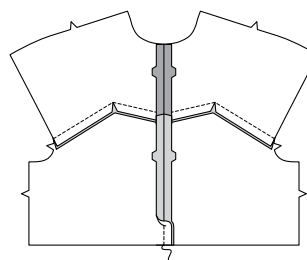
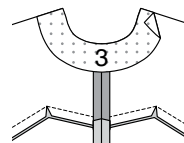
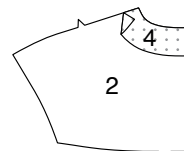
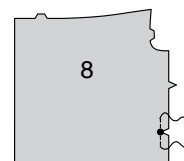
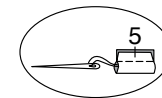
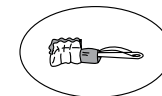
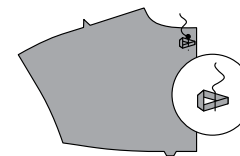
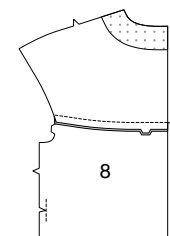
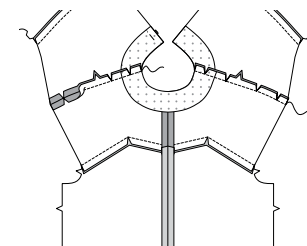
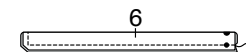
Use 5/8" (1.5cm) seam allowances unless otherwise indicated.

**PIN AND FIT**Pin or baste seams, **RIGHT SIDE TOGETHER**, matching notches. Fit garment before stitching major seams.**PRESS**

Press seam allowances flat; then open unless otherwise stated. Clip where necessary so they lie flat.

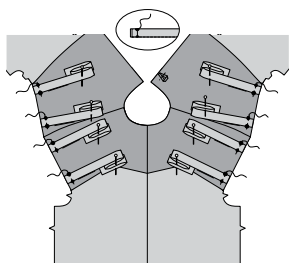
**GLOSSARY****GLOSSARY OF SEWING METHODS**Sewing methods shown in **BOLD** are defined below:**EDGE FINISH** – Stitch 1/4" (6mm) from edge, turn under edge along stitching and stitch or zig-zag, or overlock/serge raw edges.**UNDERSTITCH** – Press facing and seam away from garment, stitching through facing and seam allowances close to seam.

@keechiibstyle

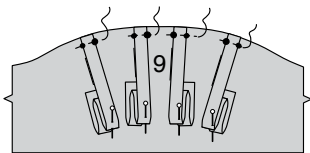
**PATTERN PIECES WILL BE IDENTIFIED BY NUMBERS THE FIRST TIME THEY ARE USED.****STITCH 5/8" (1.5CM) SEAMS WITH RIGHT SIDES TOGETHER UNLESS OTHERWISE STATED.****TOP A****FRONT****1.** To reinforce lower edge of **UPPER FRONT (1)** at small dot, stitch along seam line for about 1" (2.5cm) each side of small dot, stitching through dot, as shown. Clip to stitching at dots.**2.** With **RIGHT** sides together and raw edges even, pin lower edge of upper front to upper edge **LOWER FRONT (7)**, matching small dots and notches. Stitch, pivoting with needle in fabric at small dot. Press seam toward lower front.**3.** With **RIGHT** sides together and raw edges even, pin center front edges of front sections. Stitch. Press seam open.**INTERFACING****4.** Pin **FRONT INTERFACING (3)** to **WRONG** side of upper front along neck edge. Fuse in place following manufacturer's directions.**5.** Pin **BACK INTERFACING (4)** to **WRONG** side of **UPPER BACK (2)** along neck edge. Fuse in place following manufacturer's directions.**BACK****6.** To reinforce side edge of **LOWER BACK (8)** at large dot, stitch along seam line for about 1" (2.5cm) each side of large dot, stitching through dot, as shown. Clip to stitching at dots.**7.** Fold **LOOP (5)** in half, lengthwise, with **RIGHT** sides together. Stitch in a 1/4" (6mm) seam, stretching loop while stitching. With a needle, attach a strong thread to one end of loop.**8.** Draw needle eye forward, through fold, turning loop **RIGHT** side out.**9.** Fold loop, bringing ends together. Baste along seamline. On **OUTSIDE**, pin loop to **LEFT** side of upper back along back edge just below small dot with raw edges even. Baste in place.**10.** With **RIGHT** sides together and raw edges even, pin lower edge of upper back to upper edge lower back, matching notches. Stitch. Press seam toward lower back.**11.** Stitch front to back at shoulder edges, clipping to stitching as necessary so seam will lay flat. Press seam open.**TIES****12.** To make sixteen ties, fold **TIE END (6)** in half, lengthwise, with **RIGHT** sides together and raw edges even. Stitch long edge and unmarked end in a 3/8" (1cm) seam. Trim seam and corners.

**13.** Turn ties; press. Baste raw edges together.

On OUTSIDE, pin ties to front and back along armhole edges, matching small and large dots. Baste. Pin finished ends of ties to garment clearing all seam allowances.



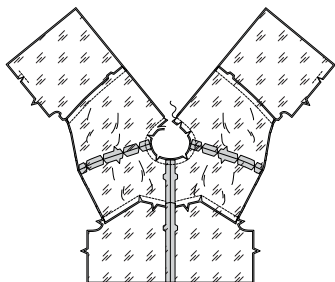
**14.** On OUTSIDE, pin remaining ties to SLEEVE (9), matching small and large dots. Baste. Pin finished ends of ties to sleeve clearing all seam allowances.



#### LINING

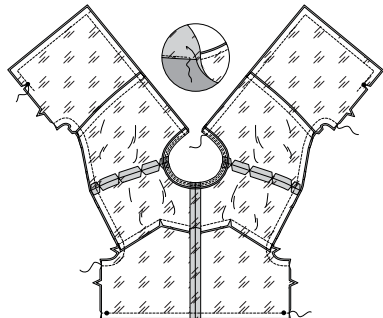
**15.** Reinforce, clip, and stitch lining sections together in the same manner as garment.

With RIGHT sides together and raw edges even, pin lining to top along neck edge, matching centers and seams. Stitch neck edge. Trim seam; clip curves.



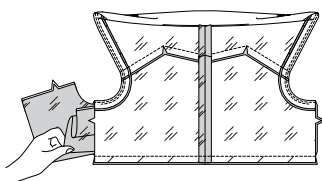
**16.** UNDERSTITCH the lining.

With RIGHT sides together and raw edges even, pin lining to top, matching centers, seams, lower large dots, and notches. Stitch lining to top, leaving side seams open above the large dots for turning, back-stitching at large dots to reinforce the seam.



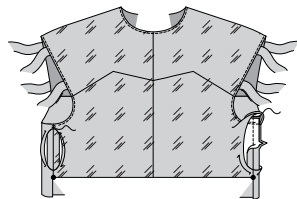
**17.** UNDERSTITCH armhole edges of lining as far as possible.

Turn top RIGHT side out by pulling each back through shoulder and out one of the side edge openings, as shown; press.



**18.** With RIGHT sides together and raw edges even, pin top edges together at sides. Stitch from large dot to underarm seam, back-stitching at ends to reinforce the seam.

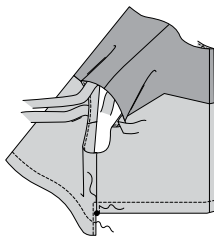
Turn seam allowances of lining under at sides; press. Slipstitch pressed edges of lining together.



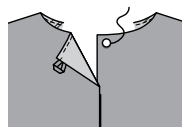
#### CONTINUE AS FOLLOWS

**19.** Press top.

If you prefer, topstitch armhole edges 1/4" (6mm) from finished edge. Topstitch front and back 1" (2.5cm) from lower finished edges. Topstitch front along side seam 1/4" (6mm) from lower edge to previous topstitching. Topstitch finished side back edge 1/4" (6mm) from finished edge, continuing up and squaring to front stitching.

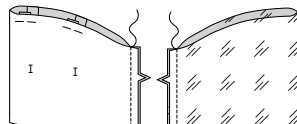


**20.** Sew button to RIGHT back under loop.

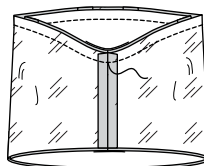


#### SLEEVE

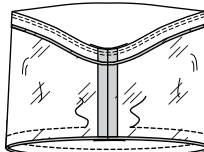
**21.** Stitch underarm edges of sleeve. Stitch underarm edges of sleeve lining.



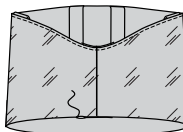
**22.** With RIGHT sides together and raw edges even, pin sleeve lining to sleeve. Stitch upper edge.



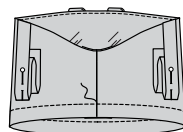
**23.** UNDERSTITCH the lining. With RIGHT sides together and raw edges even, pin sleeve lining to sleeve along lower edge. Stitch, leaving an opening for turning.



**24.** Turn sleeve; press. Slipstitch opening closed.



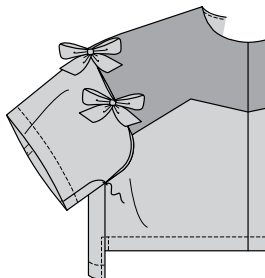
**25.** On OUTSIDE, topstitch sleeve 1" (2.5cm) from lower edge.



**26.** Unpin ties from sleeve and top. Align underarm seam and side seam with RIGHT sides together.

If you prefer, tack armhole edge of sleeve to side seam, as shown.

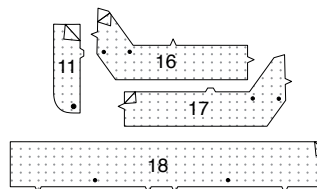
Tie front and back ties to sleeve ties in bows.



#### SHORTS B

##### INTERFACING

**1.** Pin interfacing to WRONG side of RIGHT FLY FACING (11), FRONT BAND (16), BACK BAND (17), and WAISTBAND (18) sections. Fuse in place following manufacturer's directions.

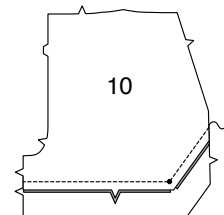


##### FRONT AND POCKET

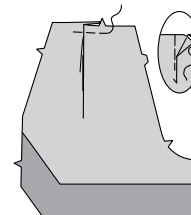
**2.** To reinforce upper edge of FRONT BAND (16) at upper small dot, stitch along seamline for about 1" (2.5cm) each side of small dot, stitching through dot, as shown. Clip to stitching at dot.



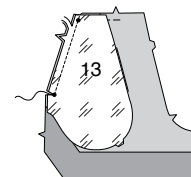
**3.** With RIGHT sides together and raw edges even, pin lower edge of FRONT (10) to upper edge front band, matching small dots and notches. Stitch, pivoting with needle in fabric at small dot. Press seam toward front band.



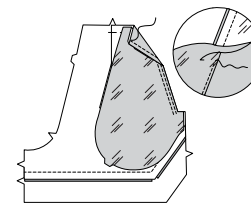
**4.** To make a pleat in front, on OUTSIDE, fold along solid line. Bring fold to broken line; pin. Baste across raw edge.



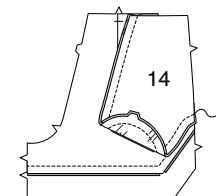
**5.** With RIGHT sides together and raw edges even, pin POCKET FACING (13) to front, matching small dots and notches. Stitch from upper edge to lower small dot, back-stitching at dot to reinforce the seam. Clip to stitching at small dot. Trim seam.



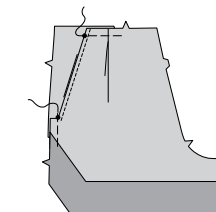
**6.** UNDERSTITCH the pocket facing. Turn facing to INSIDE; press. On OUTSIDE, topstitch 1/4" (6mm) from finished edge.



**7.** On INSIDE with RIGHT sides together, pin SIDE FRONT AND POCKET (14) to pocket facing along double-notched edge. Stitch.



**8.** On OUTSIDE, lap front over side front and pocket section, matching small dots, having raw edges even; pin. Baste side and upper edges together.

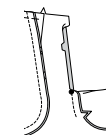


#### FLY FRONT ZIPPER

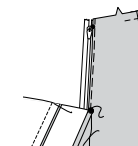
**9.** Stitch front sections together at center front between large dot and notch.



**10.** Turn in left front opening edge along foldline; press.

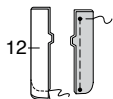


**11.** Place closed zipper (face up) under left front opening edge, having pressed edge close to zipper teeth and zipper stop at small dot. Using a zipper foot, baste close to pressed edge.

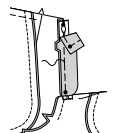




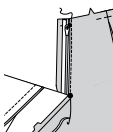
**12.** With RIGHT sides together, fold LEFT FLY (12) along foldline. Stitch lower edge. Trim. Turn. Press. Baste raw edges.



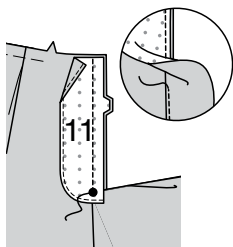
**13.** On INSIDE, pin left fly to left front opening edge (over zipper), matching notches and small dots, having raw edges even. Baste along previous basting for zipper.



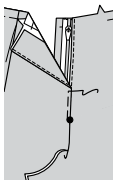
**14.** On OUTSIDE, using a zipper foot, stitch close to pressed edge of front through all layers.



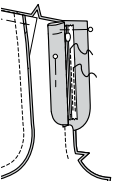
**15. EDGE FINISH** outer edge of RIGHT FLY FACING (11). Pin fly facing to right front opening edge, matching notches, and large dots. Stitch, ending at large dot. Trim. **UNDERSTITCH** fly facing. Turn facing to inside.



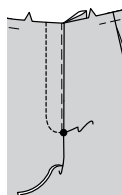
**16.** Lap right front over left, matching centers. Baste close to edge through all thicknesses.



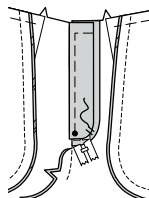
**17.** Pin left fly out of the way. Open out fly facing. Pin remaining zipper tape to fly facing, keeping right front free. Using a zipper foot, stitch in place close to zipper teeth and along center of zipper tape.



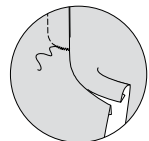
**18.** Turn facing down. On OUTSIDE, stitch right front along stitching lines, keeping left fly free.



**19.** Turn left fly back in place. On INSIDE, hand tack fly and facing together at lower edge, as shown. Trim away excess zipper tape even with lower edge of fly, if needed.

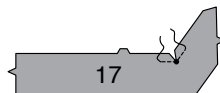


**20.** If desired, on OUTSIDE, machine-stitch a bar tack across lower end of fly through all thicknesses.

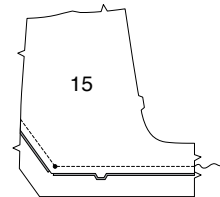


## BACK

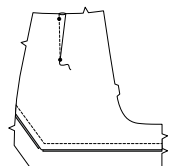
**21.** To reinforce upper edge of BACK BAND (17) at upper small dot, stitch along seam line for about 1" (2.5cm) each side of small dot, stitching through dot, as shown. Clip to stitching at dot.



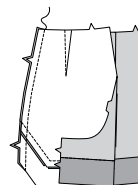
**22.** With RIGHT sides together and raw edges even, pin lower edge of BACK (15) to upper edge of back band, matching small dots and notches. Stitch, pivoting with needle in fabric at small dot. Press seam toward back band.



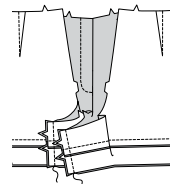
**23.** To make a dart in back, with RIGHT sides together, fold the fabric through the center of the dart, bringing broken lines and small dots together. On INSIDE, place pins at RIGHT angles to the broken lines. Stitch the dart from wide end to point. Press the dart flat along the stitching to "blend" the stitches, then press dart toward center.



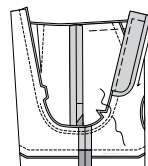
**24.** Stitch front to back at sides.



**25.** Stitch front to back at inner leg edges.

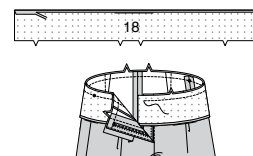


**26.** For crotch seam, turn one pant leg RIGHT side out; slip INSIDE remaining pant leg. Stitch remainder of crotch seam from upper back to front, connecting to previous stitching. To reinforce the seam, stitch 1/4" (6mm) from previous stitching between the notches.

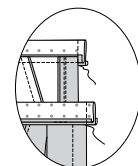


## WAISTBAND

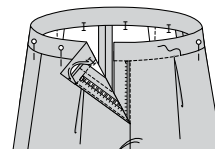
**27.** Press under 1/2" (1.3cm) on long unnotched edge of WAISTBAND (18). Trim to 1/4" (6mm). With RIGHT sides together and raw edges even, pin waistband to shorts, matching notches, placing small dots at side seams. Stitch. Trim seam. Press out waistband, pressing seam toward waistband.



**28.** On ends, fold waistband along foldline with RIGHT sides together. Stitch ends. Trim seam.

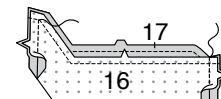


**29.** Turn waistband to INSIDE along foldline, turning corners RIGHT side out. On INSIDE, pin pressed edge of band over seam, placing pins on OUTSIDE. On OUTSIDE, stitch in the ditch of the seam, catching in pressed edge of waistband facing on the INSIDE.

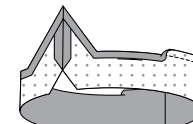


## BAND FACING

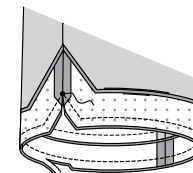
**30.** Machine-stitch 1/2" (1.3cm) from upper notched edge of FRONT BAND (16) facing and BACK BAND (17) facing. Stitch band facing sections together at inner leg edges. Stitch side edges together from lower edge to machine-stitching. Press seams open.



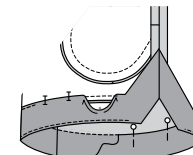
**31.** Press under upper band edge along stitching. Trim to 1/4" (6mm).



**32.** With RIGHT sides together and raw edges even, pin band facing to band along lower edge, matching seams and small dots. Stitch, pivoting with needle in fabric at small dot. Stitch again over first stitching for 1" (2.5cm) each side of small dot to reinforce the seam. Trim seam; clip to stitching at small dot.

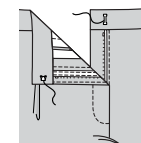


**33. UNDERSTITCH** the facing as far as possible. Turn facing to INSIDE; press. On INSIDE, pin inner pressed edge of facing over seam, placing pins on OUTSIDE. On OUTSIDE, stitch in the ditch of the seam, catching in pressed edge of facing on the INSIDE.



## FINISHING

**34.** On INSIDE, sew hook section of closure to waistband on RIGHT end at the small dot. On OUTSIDE, sew bar section of closure to waistband on LEFT end at the small dot.





# Congrats!

You've completed your sewing adventure

---

## SHARE YOUR LOOK



Post your pattern and tag us using [#knowMepatterns](#)  
[@simplicity\\_creative\\_group](#)  
[@simplicitymccallsuk](#)  
[@simplicitymccallsaustralia](#)  
for a chance to be featured on our social media.

Look for more PDF patterns at [simplicity.com](#) or for customers outside the U.S. and Canada visit [sewdirect.com](#) and [sewdirect.com.au](#)

Have a question or need help with your sewing project contact us:  
[Simplicity.com](#)    [Sewdirect.com](#)    [Sewdirect.com.au](#)



McCall's ©2025 a division of IG Design Group Americas Inc. • Atlanta, GA 30342 USA [www.thedesigngroup.com](#) • All Rights Reserved. [www.mccall.com](#) • Made in the U.S.A. Fabriqué aux États-Unis.  
To be used for individual private home use only and not for commercial or manufacturing purposes. • A usage privé seulement et non à des fins commerciales ou de production en série. • Para uso privado solamente, no se puede utilizar con propósitos de comercialización o de producción en serie.