

Easy

MISSES' DRESS IN TWO LENGTHS

**Suggested Fabrics:** Chambray, Cotton Blends, Crepe de Chine, Lightweight Wovens, Linen Blends. **Lining:** Cotton Blends, Polyester Blends.

**Notions:** A,B: One 10" (25cm) invisible zipper, 1½ yd. (1.5m) of ¼" (6mm) elastic.

Sizes	S	M	L	XL	XXL
	(8-10)	(12-14)	(16-18)	(20-22)	(24-26)
European	34-36	38-40	42-44	46-48	50-52

**BODY MEASUREMENTS: Select pattern size based on body measurements**

<b>Bust</b>	31½-32½	34-36	38-40	42-44	46-48	Ins.
<b>Waist</b>	24-25	26½-28	30-32	34-37	39-41½	"
<b>Hip-9" below waist</b>	33½-34½	36-38	40-42	44-46	48-50	"
<b>Back-neck to waist</b>	15¾-16	16¼-16½	16¾-17	17¼-17½	17¾-18	"

Lining A, B	45***	¾	¾	¾	¾	¾	Yds.
<b>Dress A</b>	45**	3	3½	3¾	3¾	3¾	Yds.
	60**	2¼	2¼	2¼	2¾	2¾	"
<b>Dress B</b>	45**	5½	5½	5½	5¼	5¼	Yds.
	60**	3½	3¾	3¾	4½	4¾	"

**FINISHED GARMENT MEASUREMENTS (Includes Design and Wearing Ease)**

<b>A,B Bust</b>	34	37½	41½	45½	49½	Ins.
<b>Width, lower edge</b>						
<b>Dress A</b>	85	88½	92½	96½	100½	Ins.
<b>Dress B</b>	97½	101	105	109	113	"
<b>Finished back length from base of neck</b>						
<b>Dress A</b>	38	38½	39	39½	40	Ins.
<b>Dress B</b>	58	58½	59	59½	60	"

\*with nap \*\*without nap

Facile

ROBE EN DEUX LONGUEURS POUR JEUNES FEMMES

**Tissus Conseillés:** Chambray, Cottonnades, Crêpe de Chine, Tissus tissés légers, Lin mélangés.

**Doubleure:** Cottonnades, Mélanges de polyester.

**Mercerie:** A,B: 1 fermeture à glissière invisible de 25cm, 1.5m d'élastique de 6mm.

Tailles	P/S	M/M	G/L	TG/XL	TTG/XXL
<b>Françaises</b>	36-38	40-42	44-46	48-50	52-54
<b>Européen</b>	34-36	38-40	42-44	46-48	50-52

**MESURES DU CORPS: Choisissez la taille du patron basée sur les mesures du corps**

<b>Poitrine</b>	80-83	87-92	97-102	107-112	117-122	cm
<b>Taille</b>	61-64	67-71	76-81	87-94	99-105	"
<b>Hanches (23cm au-dessous de la taille)</b>	85-88	92-97	102-107	112-117	122-127	cm
<b>Dos du cou à la taille</b>	40-40.5	41.5-42	42.5-43	44-44.5	45-45.5	"

Doubleure A, B	115cm**	0.6	0.7	0.7	0.7	0.7	m
<b>Robe A</b>	115cm*	2.7	3.2	3.3	3.4	3.4	m
	150cm*	2.1	2.1	2.1	2.2	2.2	"
<b>Robe B</b>	115cm*	4.7	4.7	4.7	4.7	4.8	m
	150cm*	3.2	3.3	3.5	4.1	4.2	"

**MESURES DES VÊTEMENTS FINI (Motif et aisance de port compris)**

<b>A, B Poitrine</b>	86	95	105	116	126	cm
<b>Largeur à l'ourlet</b>						
<b>Robe A</b>	216	225	235	245	255	cm
<b>Robe B</b>	248	257	267	277	287	"
<b>Longueur finie – dos, votre nuque à l'ourlet</b>						
<b>Robe A</b>	97	98	99	100	102	cm
<b>Robe B</b>	147	149	150	151	152	"

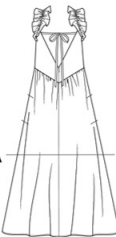
\*avec sens \*\*sans sens



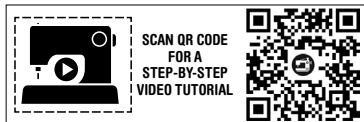
A



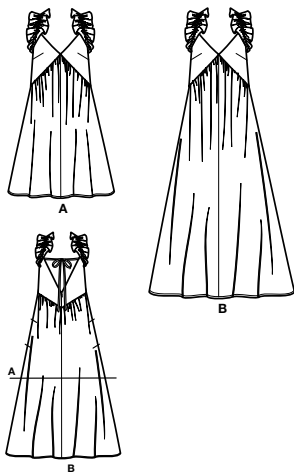
B



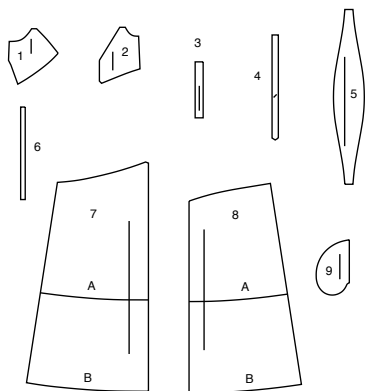
B



@keechibstyle



9 PATTERN PIECES



- 1 BODICE FRONT - A,B
- 2 BODICE BACK - A,B
- 3 SHOULDER STRAP - A,B
- 4 BACK STRAP - A,B
- 5 RUFFLE - A,B
- 6 GUIDE FOR ELASTIC - A,B
- 7 SKIRT FRONT - A,B
- 8 SKIRT BACK - A,B
- 9 POCKET - A,B

PATTERN MARKINGS

**GRAINLINE:** Place on straight grain of fabric, parallel to selvage or fold.

**FOLDLINE:** Place line on fold of fabric.

**BUTTONHOLE MARKING:** Indicates exact length and placement of buttonholes.

**BUTTON MARKING:** Indicates button placement.

**NOTCHES AND SYMBOLS:** For matching seams and construction details.

Indicates the Bustline, Waistline, Hip and/or Biceps. Measurements refer to circumference of Finished Garment (Body Measurement + Wearing Ease + Design Ease). Adjust pattern if necessary. The measurement excludes pleats, tucks, darts and seam allowances.

**SEAM ALLOWANCE:** 5/8" (1.5cm) included unless otherwise indicated, but not printed on tissue.

ADJUST IF NECESSARY

Lengthen or Shorten at adjustment lines (==) or where indicated on pattern. If substantial length is added, you may need to purchase additional fabric.

**TO SHORTEN:** Crease along adjustment line. Make a fold half the amount needed. Tape in place.

**TO LENGTHEN:** Slash between adjustment lines. Spread amount as needed, keeping edges parallel. Tape over paper.

When Alteration lines are not on tissue, lengthen or shorten at lower edge.

CUTTING AND MARKING

**SHRINK FABRIC** if not labeled pre-shrunk. Press.

**CIRCLE LAYOUT** for View, Size, Fabric Width. Use **WITH NAP** layout for fabrics with one-way designs, nap, pile or surface shading. Because most knits have surface shading, a with nap layout is used.

For **DOUBLE THICKNESS (WITH FOLD)** - fold fabric with right sides together.

**\*DOUBLE THICKNESS (WITHOUT FOLD)** - For fabrics with nap, fold fabric crosswise, right sides together. Mark as shown. Cut along crosswise fold of fabric (A). Turn upper layer 180° so arrows go in same direction and place over lower layer, right sides together (B).

For **SINGLE THICKNESS** - place fabric right side up. (For Fur Pile fabrics, place pile side down.)

★ Cut other pieces first, allowing enough fabric to cut this piece. Open fabric. For "Cut 1" pieces, cut piece once on single layer of fabric with piece face up on right side of fabric.

Pattern may have cutting lines for several sizes. Select the proper cutting line or pattern pieces for your size.

Before **CUTTING** place all pieces on fabric according to layout. Pin. (Layouts show approximate position of pattern pieces; position may vary according to your pattern size.) Cut **ACCURATELY**, cutting notches outward.

Before removing pattern, **TRANSFER MARKINGS** and lines of construction to Wrong Side of fabric, using the Pin and Chalk Pencil method or Tracing Paper and Dressmaker Wheel. Markings needed on right side of fabric should be thread traced.

**NOTE:** Broken-line boxes (at b|c) in layouts represent pieces cut by measurements provided.

CUTTING LAYOUTS

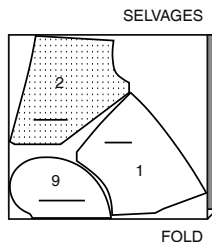
RIGHT SIDE OF PATTERN	WRONG SIDE OF PATTERN	RIGHT SIDE OF FABRIC	WRONG SIDE OF FABRIC
-----------------------	-----------------------	----------------------	----------------------

A,B NOTE: PIECE 6 IS CUT OF ELASTIC

LINING A,B

USE PIECES: 1 2 9

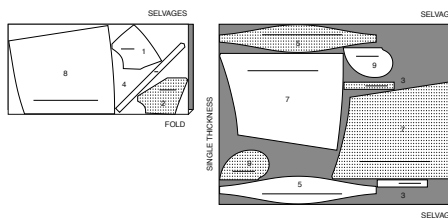
45" (115CM) WITHOUT NAP ALL SIZES



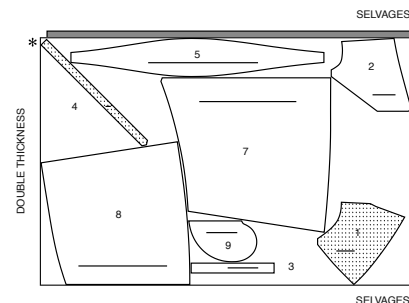
DRESS A

USE PIECES: 1 2 3 4 5 7 8 9

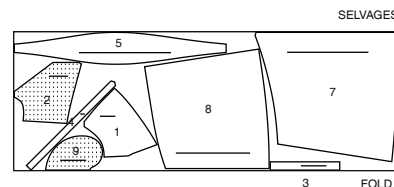
45" (115CM) WITH NAP SIZE S



45" (115CM) WITH NAP SIZES M L XL XXL



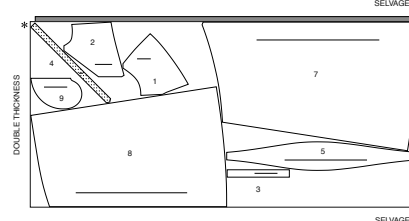
60" (150CM) WITH NAP ALL SIZES



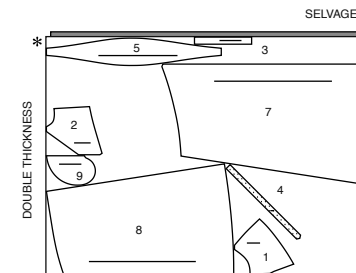
DRESS B

USE PIECES: 1 2 3 4 5 7 8 9

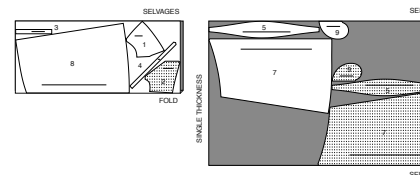
45" (115CM) WITH NAP ALL SIZES



60" (150CM) WITH NAP SIZES S M L XL

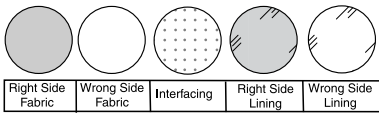


60" (150CM) WITH NAP SIZE XXL



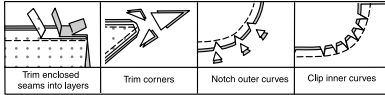
**SEWING INFORMATION**

**FABRIC KEY**



**SEAM ALLOWANCES**

Use 5/8" (1.5cm) seam allowances unless otherwise indicated.



**PIN AND FIT**

Pin or baste seams, **RIGHT SIDE TOGETHER**, matching notches. Fit garment before stitching major seams.

**PRESS**

Press seam allowances flat; then open unless otherwise stated. Clip where necessary so they lie flat.

**GLOSSARY**

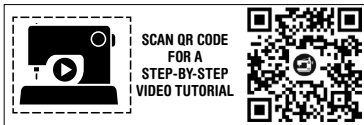
Sewing terms appearing in **BOLD TYPE** in Sewing Instructions are explained below.

**GATHER** - Stitch along seamline and again 1/4" (6mm) away in seam allowance, using long machine stitches. Pull thread ends when adjusting to fit.

**NARROW HEM** - Turn in hem; press, easing in fullness if necessary. Open out hem. Turn in again so raw edge is along crease; press. Turn in along crease; stitch.

**SLIPSTITCH** - Slide needle through a folded edge, then pick up a thread of underneath fabric.

**UNDERSTITCH** - Open out facing or underside of garment; stitch to seam allowance close to seam.



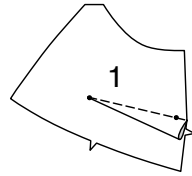
@keechiibstyle

**SEWING DIRECTIONS**

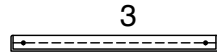
**DRESS A, B**

**BODICE**

1. Stitch dart in **BODICE FRONT (1)**. Press dart down.



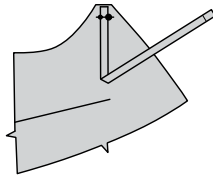
2. With **RIGHT** sides together, fold each **SHOULDER STRAP (3)** in half lengthwise. Stitch in 3/8"(1cm) seam, leaving ends open.



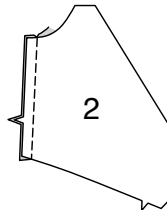
3. Turn Press. Baste raw edges.



4. On **OUTSIDE**, pin one shoulder strap to each bodice front, matching symbols, having raw edges even. Baste.



5. Stitch **BODICE BACK (2)** to bodice front at side.



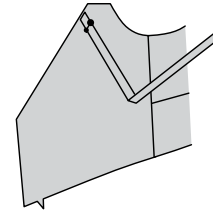
6. With **RIGHT** sides together, fold each **BACK STRAP (4)** in half lengthwise. Stitch in 1/4"(6mm) seam, leaving end with symbols open.



7. Turn Press. Baste raw edges.

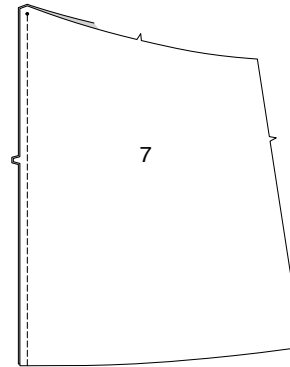


8. On **OUTSIDE**, pin one back strap to each bodice back, matching symbols, having raw edges even. Baste.

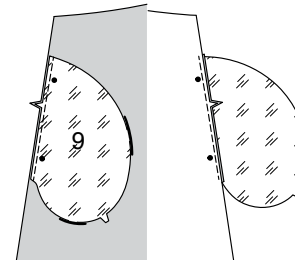


**SKIRT**

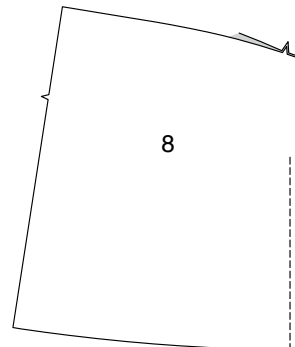
9. Stitch **SKIRT FRONT (7)** sections together at center front, ending stitching at small dot.



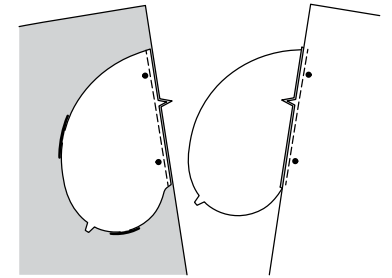
10. Stitch one **POCKET (9)** (lining) section to skirt front at each side in 1/4"(6mm) seam. Press seams toward pockets.



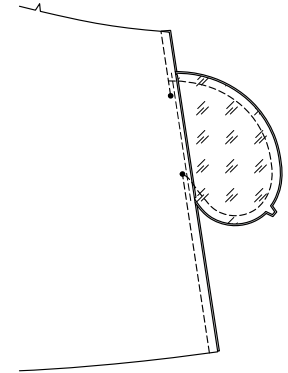
11. Stitch **SKIRT BACK (8)** sections together at center back, leaving open from 1"(2.5cm) below notch to upper edge.



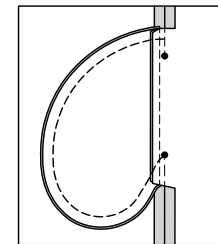
12. Stitch one pocket section (fabric) to skirt back at each side in 1/4"(6mm) seam. Press seams toward pockets.



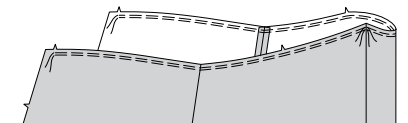
13. Stitch skirt front and skirt back together at sides, leaving open between large dots. Stitch pocket edges together to side seams.



14. Clip back seam allowances above and below pockets. Turn pockets toward front along seamlines; press.

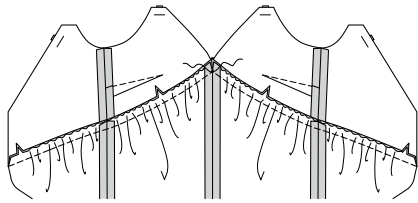


15. **GATHER** upper edge of skirt between notch on back and center front seamline.



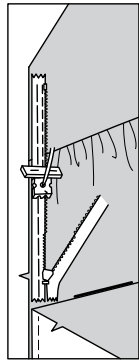
**ZIPPER AND LINING**

**16.** With RIGHT sides together, pin bodice sections to upper edges of skirt, matching notches and symbols; adjust gathers. Baste. Stitch, breaking stitching at small dot, being careful not to catch ends of straps in stitching. Press seams toward bodice.

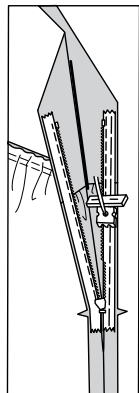


**NOTE:** Stitch the invisible zipper using an invisible zipper foot. If the zipper is longer than the zipper opening, adjust after the zipper is inserted.

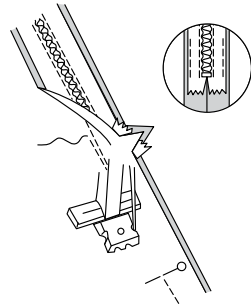
**17.** Open the zipper and press the tape using a cool iron. On OUTSIDE, pin RIGHT side of the zipper face down on the RIGHT side of the zipper opening. Have the coil along the seam line, the tape within the seam allowance and the top stop 3/4"(2cm) below upper edge, as shown. Hand-baste along center of the tape. Position zipper foot at the top of the zipper with RIGHT groove of the foot over coil. Stitch along tape to the notch. Back-stitch to reinforce.



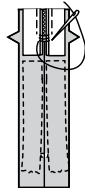
**18.** Pin the remaining half of the zipper to the LEFT side of the zipper opening in same manner. Hand-baste along the center of the tape. Position zipper foot at the top of the zipper with LEFT groove over the coil. Stitch along tape to lower notch, keeping skirt free. Back-stitch to reinforce.



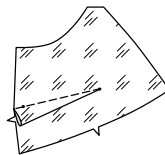
**19.** Close zipper and check that it is invisible from the OUTSIDE. Pull the free ends of the zipper tape away from the seam allowance. Pin remaining left side seam together below zipper. Position zipper foot all the way to the LEFT so the needle goes down through the outer notch of the foot. Start stitching seam 1/4"(6mm) above lowest stitch and slightly to the LEFT. Stitch, connecting with previous stitching.



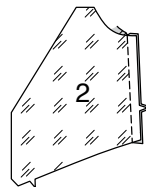
**20.** If the zipper is longer than the opening, using a strong thread, hand-sew a few small stitches across ends of coils at end of opening. Trim away lower end of zipper tape to within 5/8"(1.5cm) of hand-stitches.



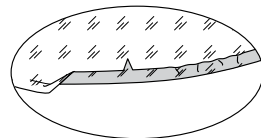
**21.** Stitch dart in bodice front LINING (1). Press dart down.



**22.** Stitch bodice back LINING (2) to bodice front lining at side.



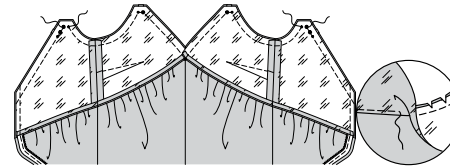
**23.** Turn under seam allowance on lower edge of each bodice lining, easing in fullness if necessary. Press. Trim pressed seam allowance to 3/8"(1cm).



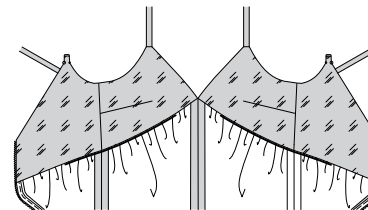
**24.** Open out center back opening edges of dress, rolling the zipper teeth away from the opening edge.

With RIGHT sides together, pin bodice linings to bodice, matching symbols, having raw edges even; pin back opening edges together. Stitch front, armhole and back edges, leaving upper edge of backs open between symbols, as shown. Using an adjustable zipper foot, stitch 1/2"(1.3cm) from center back edges, keeping zipper teeth free. Do not trim back edges.

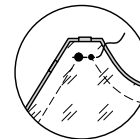
**UNDERSTITCH** lining as far as possible.



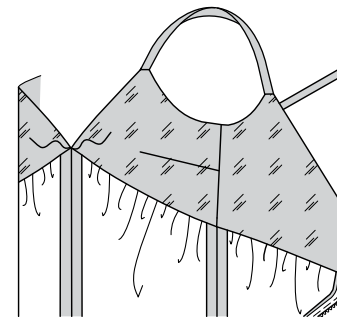
**25.** Turn lining to INSIDE, rolling zipper teeth back in place; press.



**26.** Open out lining. Insert back end of straps through back openings, matching symbols. Stitch openings. Trim.

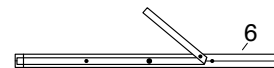


**27.** Turn down lining. SLIPSTITCH pressed edges over seams.

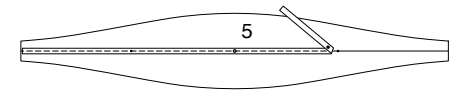


**RUFFLE AND FINISHING**

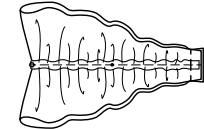
**28.** Cut two pieces of elastic the length of GUIDE FOR ELASTIC (6). Transfer markings.



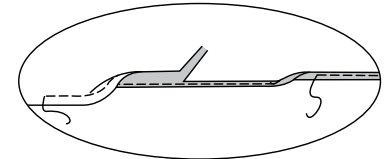
**29.** For each ruffle, on WRONG side, pin elastic to RUFFLE (5), centering elastic over stitching line, matching symbols. Stitch along center of elastic, stretching elastic while stitching



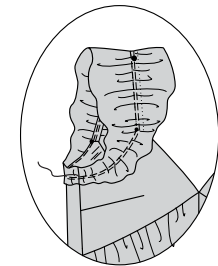
**30.** Stitch ruffle together at ends.



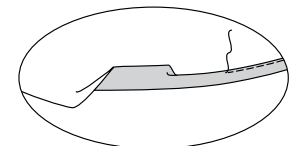
**31.** To hem outer edge of ruffle, stitch 1/4"(6mm) from raw edge. Turn in and press alongside stitching, as shown. Trim very close to stitching. Turn in again along trimmed edge. Stitch in place.



**32.** With RIGHT sides up, pin ruffles to bodice and straps, matching stitching lines and large dots on straps, placing small dots at armhole edges. Stitch ruffle in place along stitching line.



**33.** Make NARROW HEM at lower edge of dress.





# Congrats!

You've completed your sewing adventure

---

## SHARE YOUR LOOK



Post your pattern and tag us using [#knowMepatterns](#)  
[@simplicity\\_creative\\_group](#)  
[@simplicitymccallsuk](#)  
[@simplicitymccallsaustralia](#)  
for a chance to be featured on our social media.

Look for more PDF patterns at [simplicity.com](#) or for customers outside the U.S. and Canada visit [sewdirect.com](#) and [sewdirect.com.au](#)

Have a question or need help with your sewing project contact us:

[Simplicity.com](#)

[Sewdirect.com](#)

[Sewdirect.com.au](#)



McCall's ©2025 a division of IG Design Group Americas Inc. • Atlanta, GA 30342 USA [www.thedesigngroup.com](#) • All Rights Reserved. [www.mccall.com](#) • Made in the U.S.A. Fabriqué aux États-Unis.

To be used for individual private home use only and not for commercial or manufacturing purposes. • A usage privé seulement et non à des fins commerciales ou de production en série. • Para uso privado solamente, no se puede utilizar con propósitos de comercialización o de producción en serie.