



LYNN BRANNELLY

knowME
BY MIMI G

ME2125




Scan QR code for a Sew-Along video tutorial.



@LWS_lynnwardrobesews



Designed and printed in USA

Average

MISSES' VEST AND SHORTS

Suggested Fabrics: Chino, Cotton Blends, Denim, Linen Blends, Microsuede, Stretch Wovens, Twill.

Lining: Cotton Blends, Polyester Blends. **Interfacing:** Lightweight Fusible.

Notions: A: Four ¾" (2cm) buttons. B: One 9" (23cm) zipper (adjust to fit), one ¾" (2cm) button, one hook and bar.

Sizes	8	10	12	14	16	18	20	22	24	26
European	34	36	38	40	42	44	46	48	50	52

BODY MEASUREMENTS: Select pattern size based on body measurements

Bust	31½	32½	34	36	38	40	42	44	46	48	Ins.
Waist	24	25	26½	28	30	32	34	37	39	41	"
Hip-9" below waist	33½	34½	36	38	40	42	44	46	48	50	"
Back-neck to waist	15¾	16	16¼	16½	16¾	17	17¼	17½	17¾	18	"

Vest A	45"	1%	1%	1%	1%	1%	1%	2	2	2	Yds.
	60"	1%	1%	1%	1½	1½	1½	1½	1½	1½	"

Interfacing 20" - 1¼yds.

A, B Lining 45" - ½yd.

Shorts B	45"	1¼	1¼	1¾	1¾	1¾	1¾	1¾	1¾	1¾	Yds.
	60"	1%	1%	1¼	1¼	1¼	1¾	1¾	1¾	1¾	"

Interfacing 20" - ¾yd.

FINISHED GARMENT MEASUREMENTS (Includes Design and Wearing Ease)

A Bust	35½	36½	38	40	42	44	46	48	50	52	Ins.
A Waist	29	30	31½	33½	35½	37½	39½	41½	43½	45½	"
B Waist	26	27	28½	30½	32½	34½	36½	38½	40½	42½	"
B Hip	37¾	38¾	40¼	42¼	44¼	46¼	48¼	50¼	52¼	54¼	"
Width, each leg											
Shorts B	24	25	26	27	28	29	30	31	32	33	Ins.
Finished back length from base of neck											
Vest A	24¼	24½	24¾	25	25¼	25½	25¾	26	26¼	26½	Ins.
Finished side length from waist											
Shorts B	18¼	18½	18¾	19	19¼	19½	19¾	20	20¼	20½	Ins.

*with nap **without nap

Moins Facile

GILET ET SHORT POUR JEUNES FEMMES

Tissus Conseillés: Chino, Cottonnades, Denim, Lin mélangés, Micro-suédine, Tissus tissés extensibles, Twill. **Doubleure:** Cottonnades, Mélanges de polyester. **Entoilage:** Thermocollant léger.

Mercerie: A: 4 boutons de 2cm. B: 1 fermeture à glissière de 23cm (adaptez pour ajuster), 1 bouton de 2cm, 1 crochet.

Tailles	8	10	12	14	16	18	20	22	24	26
Françaises	36	38	40	42	44	46	48	50	52	54
Européen	34	36	38	40	42	44	46	48	50	52

MESURES DU CORPS: Choisissez la taille du patron basée sur les mesures du corps

Poitrine	80	83	87	92	97	102	107	112	117	122	cm
Taille	61	64	67	71	76	81	87	94	99	104	"
Hanches (23cm au-dessous de la taille)	85	88	92	97	102	107	112	117	122	127	cm
Dos du cou à la taille	40	40.5	41.5	42	42.5	43	44	44.5	45	46	"

Gilet A	115cm*	1.7	1.7	1.7	1.7	1.7	1.7	1.7	1.8	1.8	m
	150cm*	1.3	1.3	1.3	1.3	1.4	1.4	1.4	1.4	1.4	"

Entoilage 51cm - 1.1m

A, B Doubleure 115cm** - 0.5m

Short B	115cm*	1.1	1.1	1.3	1.3	1.3	1.3	1.5	1.5	1.6	m
	150cm*	1.0	1.0	1.1	1.1	1.1	1.3	1.3	1.3	1.3	"

Entoilage 51cm - 0.7m

MESURES DES VÊTEMENTS FINI (Motif et aisance de port compris)

A Poitrine	90	93	97	102	107	112	117	122	127	132	cm
A Taille	74	76	80	85	90	95	100	105	110	116	"
B Taille	66	69	72	77	83	88	93	98	103	108	"
B Hanches	96	98	102	107	112	117	123	128	133	138	"
Largeur, chaque jambe											
Short B	61	64	66	69	71	74	76	79	81	84	cm
Longueur finie - dos, votre nuque à l'ourlet											
Gilet A	62	62	63	64	64	65	65	66	67	67	cm
Longueur finie - côté, taille à l'ourlet											
Short B	46	47	48	48	49	50	50	51	51	52	cm

*avec sens **sans sens



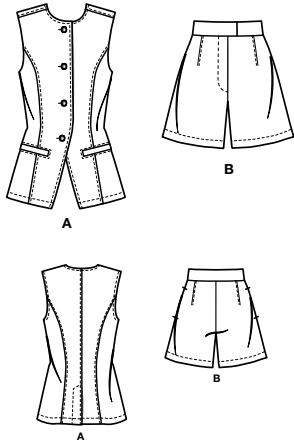
A



B



@LWS_lynnwardrobesews



PATTERN MARKINGS

GRAINLINE: Place on straight grain of fabric, parallel to selvage or fold.

FOLDLINE: Place line on fold of fabric.

BUTTONHOLE MARKING: Indicates exact length and placement of buttonholes.

BUTTON MARKING: Indicates button placement.

NOTCHES AND SYMBOLS: For matching seams and construction details.

Indicates the Bustline, Waistline, Hip and/or Biceps. Measurements refer to circumference of Finished Garment (Body Measurement + Wearing Ease + Design Ease). Adjust pattern if necessary. The measurement excludes pleats, tucks, darts and seam allowances.

SEAM ALLOWANCE: 5/8" (1.5cm) included unless otherwise indicated, but not printed on tissue.

ADJUST IF NECESSARY

Lengthen or Shorten at adjustment lines (==) or where indicated on pattern. If substantial length is added, you may need to purchase additional fabric.

TO SHORTEN: Crease along adjustment line. Make a fold half the amount needed. Tape in place.

TO LENGTHEN: Slash between adjustment lines. Spread amount as needed, keeping edges parallel. Tape over paper.

When Alteration lines are not on tissue, lengthen or shorten at lower edge.

CUTTING AND MARKING

SHRINK FABRIC if not labeled pre-shrunk. Press.

CIRCLE LAYOUT for View, Size, Fabric Width.

Use **WITH NAP** layout for fabrics with one-way designs, nap, pile or surface shading. Because most knits have surface shading, a with nap layout is used.

For **DOUBLE THICKNESS (WITH FOLD)** - fold fabric with right sides together.

*** DOUBLE THICKNESS (WITHOUT FOLD)** - For fabrics with nap, fold fabric crosswise, right sides together. Mark as shown. Cut along crosswise fold of fabric (A). Turn upper layer 180° so arrows go in same direction and place over lower layer, right sides together (B).

For **SINGLE THICKNESS** - place fabric right side up. (For Fur Pile fabrics, place pile side down.)

★ Cut other pieces first, allowing enough fabric to cut this piece. Open fabric. For "Cut 1" pieces, cut piece once on single layer of fabric with piece face up on right side of fabric.

Pattern may have cutting lines for several sizes. Select the proper cutting line or pattern pieces for your size.

Before **CUTTING** place all pieces on fabric according to layout. Pin. (Layouts show approximate position of pattern pieces; position may vary according to your pattern size.) Cut **ACCURATELY**, cutting notches outward.

Before removing pattern, **TRANSFER MARKINGS** and lines of construction to Wrong Side of fabric, using the Pin and Chalk Pencil method or Tracing Paper and Dressmaker Wheel. Markings needed on right side of fabric should be thread traced.

NOTE: Broken-line boxes (a| b| c|) in layouts represent pieces cut by measurements provided.

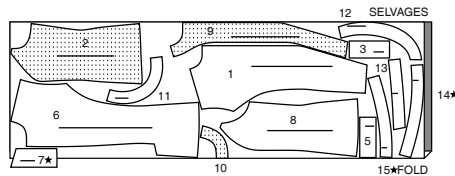
CUTTING LAYOUTS

RIGHT SIDE OF PATTERN	WRONG SIDE OF PATTERN	RIGHT SIDE OF FABRIC	WRONG SIDE OF FABRIC
-----------------------	-----------------------	----------------------	----------------------

VEST A

USE PIECES: 1 2 3 5 6 7 8 9 10 11 12 13 14 15

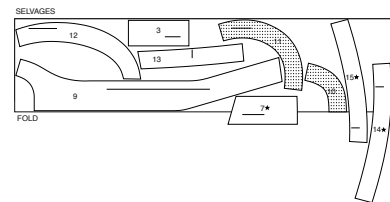
45" (115CM)
 WITH NAP
 ALL SIZES



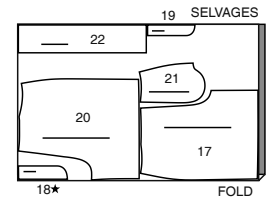
INTERFACING A

USE PIECES: 3 7 9 10 11 12 13 14 15

20" (51CM) WITHOUT NAP/ ALL SIZES



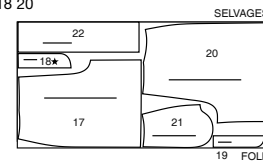
60" (150CM)
 WITH NAP
 SIZES 18 20 22 24 26



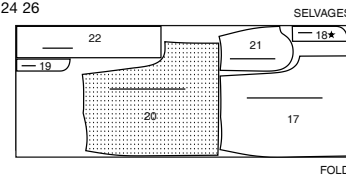
SHORTS B

USE PIECES: 17 18 19 20 21 22

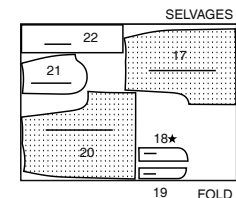
45" (115CM)
 WITH NAP
 SIZES 8 10 12 14 16 18 20



45" (115CM)
 WITH NAP
 SIZES 22 24 26



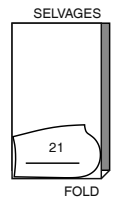
60" (150CM)
 WITH NAP
 SIZES 8 10 12 14 16



LINING B

USE PIECE: 21

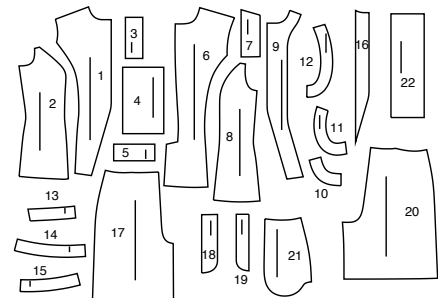
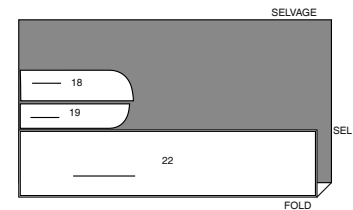
45" (115CM)
 WITHOUT NAP
 ALL SIZES



INTERFACING B

USE PIECES: 18 19 22

20" (51CM)
 WITHOUT NAP
 ALL SIZES

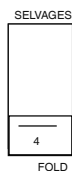


- 1 Front-A
- 2 Side Front-A
- 3 Welt-A
- 4 Pocket-A
- 5 Pocket Facing-A
- 6 Back-A
- 7 Right Back Facing-A
- 8 Side Back-A
- 9 Front Facing-A
- 10 Back Facing-A
- 11 Front Armhole Facing-A
- 12 Back Armhole Facing-A
- 13 Front Hem Facing-A
- 14 Right Back Hem Facing-A
- 15 Left Back Hem Facing-A
- 16 Buttonhole Guide-A
- 17 Front-B
- 18 Right Fly Facing-B
- 19 Left Fly-B
- 20 Back-B
- 21 Pocket-B
- 22 Waistband-B

LINING A

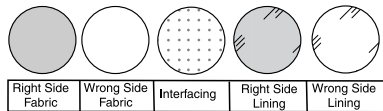
USE PIECE: 4

45" (115CM)
 WITHOUT NAP
 ALL SIZES



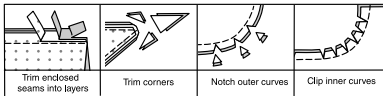
SEWING INFORMATION

FABRIC KEY



SEAM ALLOWANCES

Use 5/8" (1.5cm) seam allowances unless otherwise indicated.



PIN AND FIT

Pin or baste seams, **RIGHT SIDE TOGETHER**, matching notches. Fit garment before stitching major seams.

PRESS

Press seam allowances flat; then open unless otherwise stated. Clip where necessary so they lie flat.

GLOSSARY

Sewing methods in **BOLD TYPE** have Sewing Tutorial Video available. Scan **QR CODE** to watch videos:

EDGE STITCH – Stitch close to finished edge or seam.

FINISH – Stitch 1/4" (6mm) from raw edge and finish with one of the following: (1) Pink OR (2) Overcast OR (3) Turn in along stitching and stitch close to fold OR (4) Overlock.

OPTIONAL FOR HEMS: Apply Seam Binding.

DART –With **RIGHT** sides together, fold the fabric through the center of the dart, bringing broken lines and small dots together. On **INSIDE**, place pins at **RIGHT** angles to the broken lines. Stitch the dart from wide end to point.

Press the dart flat along the stitching to "blend" the stitches, then press dart in direction given in sewing directions.

TIP- To prevent a "bubble" at the point, make the last few stitches right on the fold and leave the thread ends long enough to tie a knot. **DO NOT** back-stitch at the point.

REINFORCE – Stitch along seamline where indicated in sewing instructions, using small machine stitches.

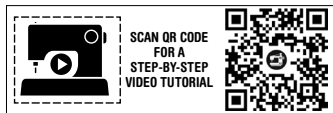
SLIPSTITCH – Slide needle through a folded edge, then pick up a thread of underneath fabric.

STAYSTITCH – Stitch 1/8" (3mm) from seamline in seam allowance (usually 1/2" (13mm) from raw edge).

STITCH IN THE DITCH – see Machine Stitches: "how to stitch in the ditch" video

TOPSTITCH – On outside, stitch 1/4" (6mm) from edge, seam or previous stitching, using presser foot as guide, or stitch where indicated in instructions.

UNDERSTITCH – Open out facing or underside of garment; stitch to seam allowance close to seam.



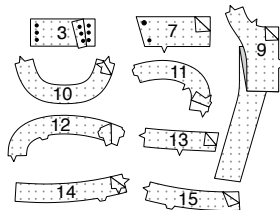
@LWS_lynnwardrobeseaws

SEWING DIRECTIONS

VEST A

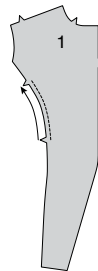
INTERFACING

1. Pin **INTERFACING** to wrong side of each matching **FABRIC** section. Fuse, following manufacturer's instructions.

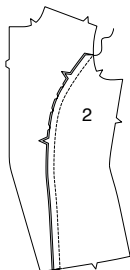


FRONT AND BACK

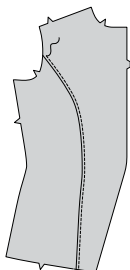
2. **STAYSTITCH** side edge of **FRONT** (1) between notches.



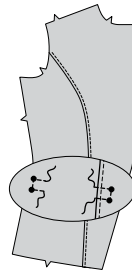
3. With **RIGHT** sides together, pin **SIDE FRONT** (2) to side edge of front, matching notches. Clip to stay-stitching as necessary. Baste. Stitch. Press seam toward front.



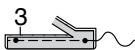
4. On **OUTSIDE**, **TOPSTITCH** front, catching in pressed seam on **INSIDE**.



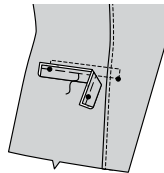
5. **REINFORCE** front sections along stitching lines, pivoting at small dots.



6. With wrong sides together, fold each **WELT** (3) section along foldline. Baste raw edges together. Trim seam allowances on long edges to a scant 1/4" (6mm).



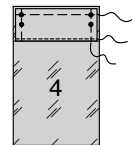
7. Pin welt to front, placing seamlines along lower stitching lines. Baste.



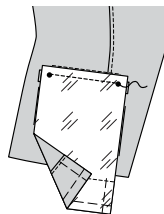
8. **FINISH** long edge without symbols of **POCKET** **FACING** (5); press.



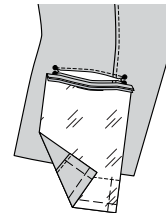
9. Pin **WRONG** side of pocket facing to **RIGHT** side of **POCKET** (4), placing finished edge along placement line, having raw edges even. **EDGE STITCH** pressed edge in place. Baste raw edges together, as shown.



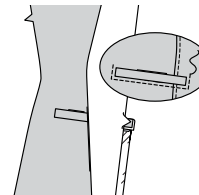
10. With **RIGHT** sides together, pin end of back pocket (without facing), to front along lower stitching line, matching small dots. Stitch along stitching line between small dots.



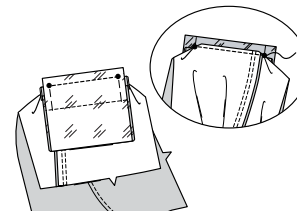
11. Slash along line between welt and front, clipping diagonally to small dots, being careful not to cut lower welt.



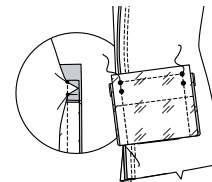
12. Turn pocket and triangular ends to **INSIDE**, pulling ends of welts between triangular ends, as shown. Press. On **OUTSIDE**, **TOPSTITCH** lower and side edges of welt.



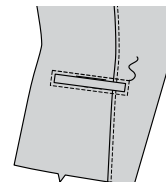
13. With **RIGHT** sides together, fold back pocket along foldline, having pressed edges even at sides. Pin back pocket to upper edge of opening, matching stitching lines and symbols. Stitch along stitching line between small dots, keeping front free.



14. Stitch pocket edges together; catching welts and triangular ends, keeping front free.



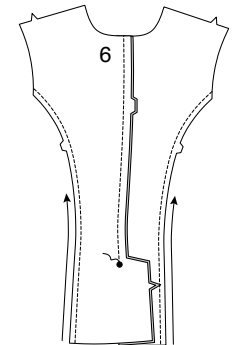
15. On **OUTSIDE**, **TOPSTITCH** upper edge of welt, connecting with previous stitching.



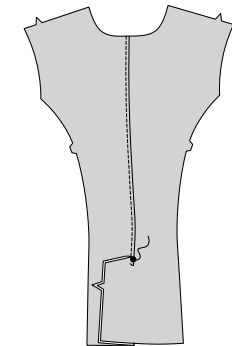
16. **STAYSTITCH** side edge of **BACK** (6).

With **RIGHT** sides together, stitch center back seam of back ending at large dot.

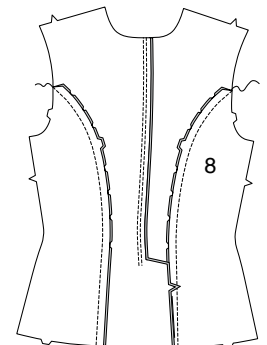
Press seam toward **LEFT** back.



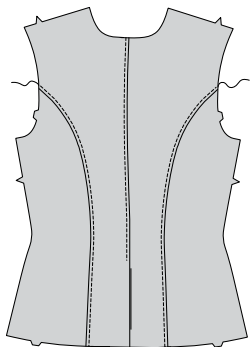
17. On **OUTSIDE**, **TOPSTITCH** center back seam as shown, ending at large dot.



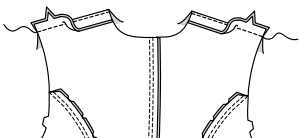
18. With **RIGHT** sides together, pin **SIDE BACK** (8) to side edges of back, matching notches. Clip to stay-stitching as necessary. Baste. Stitch. Press seam toward back.



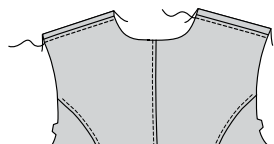
19. On OUTSIDE, **TOPSTITCH** back seams.



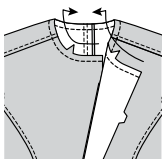
20. With RIGHT sides together, stitch front to back at shoulder seams. Press seams toward back.



21. On OUTSIDE, **TOPSTITCH** back shoulder seam.

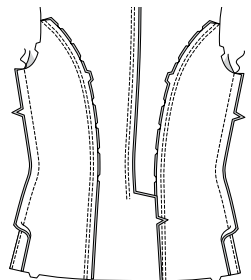


22. **STAYSTITCH** neck edge of garment, in direction of arrows.

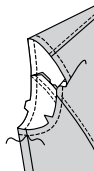


ARMHOLE FACINGS

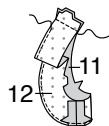
23. Stitch front to back at side seams. Press seams toward back.



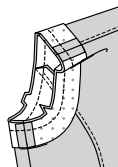
24. **STAYSTITCH** armhole edge.



25. Stitch ends of FRONT ARMHOLE FACING (11) and BACK ARMHOLE FACING (12) together. **FINISH** unnotched edge.

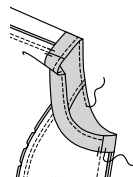


26. Pin facing to armhole edge, matching underarm seams and notches. Stitch. Trim seam.



27. Turn armhole facing to INSIDE; press. Tack at seams OR sew outer edge in place.

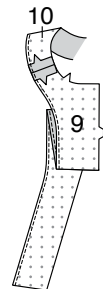
TOPSTITCH armhole edge.



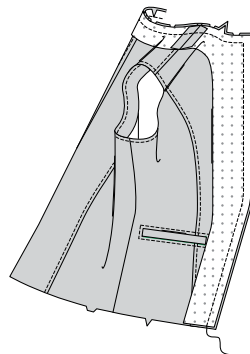
FACINGS AND FINISHING

28. With RIGHT sides together, stitch FRONT FACING (9) to BACK FACING (10) at shoulder seams.

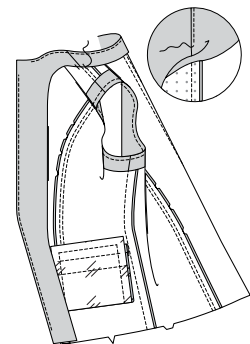
FINISH unnotched edge of facing.



29. On OUTSIDE, pin facing to front and neck edge matching notches, having raw edges even. Clip neck edge to stay-stitching as necessary. Baste. Stitch front and neck edge. Trim seam.



30. **UNDERSTITCH** facing as far as possible. Turn facing to INSIDE. Press. Tack facing at shoulder seams.

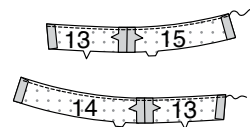


31. With RIGHT sides together, stitch FRONT HEM FACING (13) to LEFT BACK HEM FACING (15), matching notches.

Stitch remaining front facing to RIGHT BACK HEM FACING (14) at notched edge.

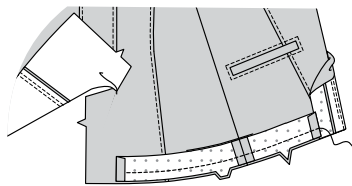
FINISH unnotched edge of facings.

Press under seam allowance on front and back edges of facings.



32. Turn lower edge of front facing to OUTSIDE, along seam.

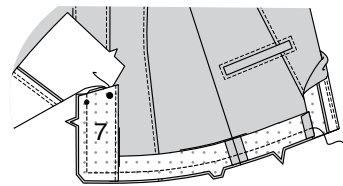
On OUTSIDE, pin RIGHT facing to lower RIGHT edge of vest matching notches. Baste lower edge of facing in place.



33. **FINISH** unnotched edge of RIGHT BACK FACING (7).

With RIGHT sides together, pin RIGHT back facing to RIGHT vent edge, (over lower facing) matching small and large dots, having raw edges even.

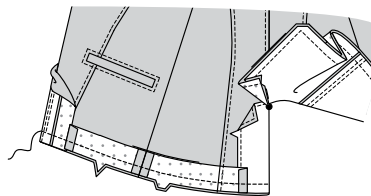
Stitch notched edge of vent, continuing across lower edge of garment. Trim seam and corners.



34. **FINISH** LEFT back vent edge.

Turn LEFT back vent to OUTSIDE along fold line and lower edge of front facing to OUTSIDE, along seam.

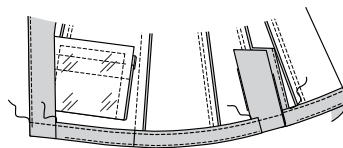
On OUTSIDE, pin LEFT facing to lower edge of vest matching notches. Stitch lower edge. Trim seam and corners.



35. **UNDERSTITCH** lower facings, as far as possible.

Turn facings to INSIDE. Press. **SLIPSTITCH** pressed edge of facings.

Stitch 1/4" (6mm) away from finished edge of facings, continuing across front edges.

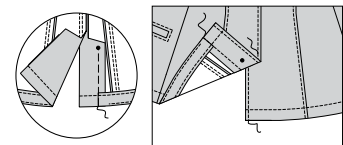


FINISHING

36. Baste LEFT side of vent along 5/8" (1.5cm) seam allowance, starting at small dot, as shown.

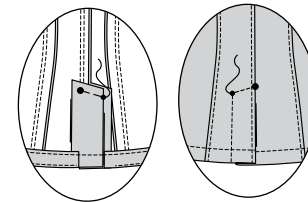
On OUTSIDE, **TOPSTITCH** as basted. **TOPSTITCH** front edge of LEFT vent, connecting with previous stitching.

TOPSTITCH RIGHT vent opening edge.



37. On INSIDE, press vent to LEFT side, matching small and large dots. Baste along upper edge of vent, between small and large dots, through all thicknesses.

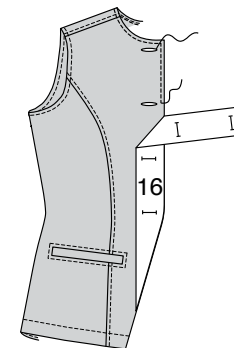
On OUTSIDE, stitch along stitching line, as basted, connecting with previous stitching.



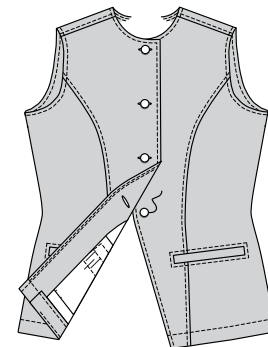
38. **TOPSTITCH** front and neck edges of vest.

Place BUTTONHOLE GUIDE (16) on RIGHT front, having edges of tissue even with finished edges of garment, as shown. Transfer markings.

Make buttonholes at markings.



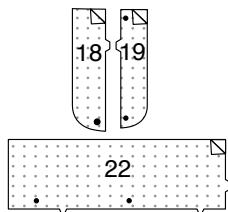
39. Lap opening edges, matching centers. Using buttonholes as guides, make button markings on LEFT front. Sew buttons at markings.



SHORTS B

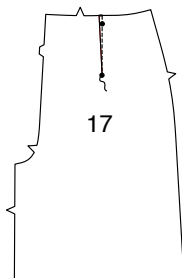
INTERFACING

1. Pin INTERFACING to wrong side of each matching FABRIC section. Fuse, following manufacturer's instructions.

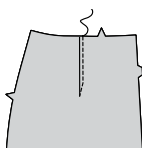


FRONT AND BACK

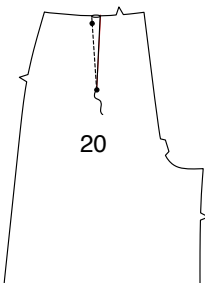
2. Stitch DARTS in FRONT (17). Press toward center.



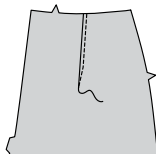
3. On OUTSIDE, TOPSTITCH front darts following angle of dart at lower edge, as shown.



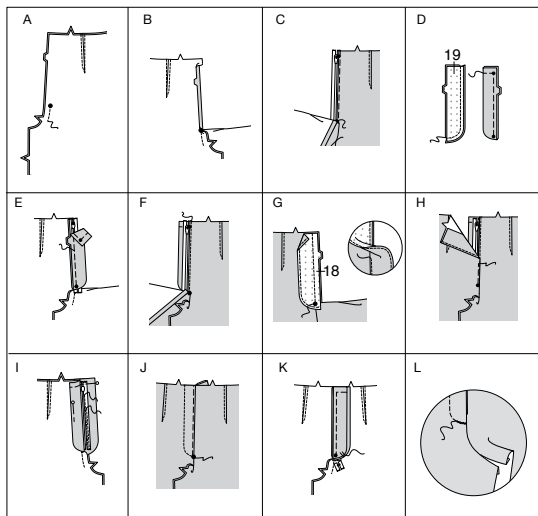
4. Stitch DARTS in BACK (20). Press toward center.



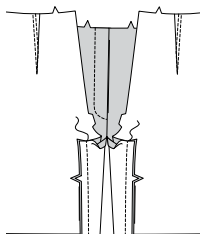
5. On OUTSIDE, TOPSTITCH back darts, following shape of dart, and tapering to nothing at end of dart, as shown.



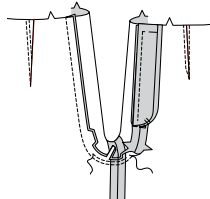
6. A-Stitch front sections together at center front between large dot and notch.
 B-Turn in LEFT front opening edge along foldline; press.
 C-Place closed zipper (face up) under left front opening edge, having pressed edge close to zipper teeth and zipper stop at small dot. Using a zipper foot, baste close to pressed edge.
 D-With RIGHT sides together, pin LEFT FLY (19) sections together. Stitch curved edge. Trim. Turn. Press. Baste raw edges.
 E-On INSIDE, pin LEFT fly to LEFT front opening edge (over zipper), matching notches and small dots, having raw edges even. Baste along previous basting for zipper.
 F-On OUTSIDE, using a zipper foot, stitch close to pressed edge of front through all layers.
 G-FINISH outer edge of RIGHT FLY FACING (18). Pin fly facing to RIGHT front opening edge, matching notches and large dots. Stitch, ending at large dot. Trim. UNDERSTITCH fly facing. Turn facing to inside.
 H-Lap RIGHT front over LEFT, matching centers. Baste close to edge through all thicknesses.
 I-Pin LEFT fly out of the way. Open out fly facing. Pin remaining zipper tape to fly facing, keeping RIGHT front free. Using a zipper foot, stitch in place close to zipper teeth and along center of zipper tape.
 J-Turn facing down. On OUTSIDE, stitch right front along stitching line, keeping left fly free.
 K-Turn fly back in place. On INSIDE, hand tack fly and facing together at lower edge, as shown. Trim away excess zipper tape even with lower edge of fly, if needed.
 L-If desired, on OUTSIDE, machine-stitch a bar tack across lower end of fly through all thicknesses.



7. Stitch front and back together at inner leg edges.

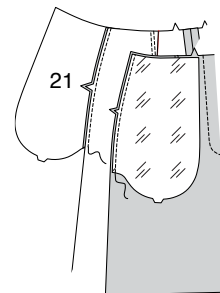


8. Stitch remainder of crotch seam to small dot in front. Stitch again 1/4" (6mm) away in seam allowance along curve, as shown. Trim close to second stitching.



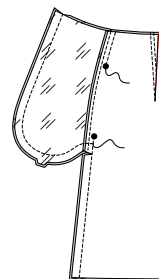
POCKETS AND SIDES

9. Stitch one POCKET (21) section (lining) to front at each side in 1/4" (6mm) seam. Press seams toward pockets.

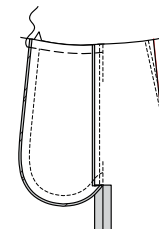


Stitch one pocket section (fabric) to back at each side in 1/4" (6mm) seam. Press seams toward pockets.

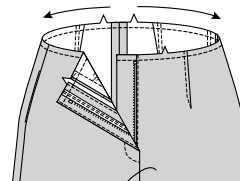
10. Stitch front and back together at sides, leaving open between large dots. Stitch pocket edges together to side seams. Clip back seam allowances below pockets.



11. Turn pockets toward front along seamlines; press. Baste upper edge in place.

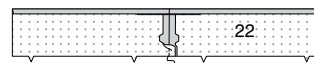


12. STAYSTITCH upper edge of shorts.

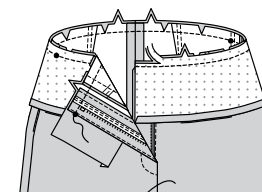


WAISTBAND

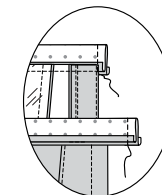
13. With RIGHT sides together, stitch center back seam of WAISTBAND (22) sections. Press under 1/2" (1.3cm) on long unnotched edge of waistband.



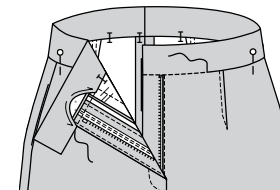
14. Pin waistband to upper edge of pants, matching small dots to side seams and placing RIGHT opening edge at small dot. Clip to stay-stitching as necessary; baste. Stitch. Trim. Press seam toward waistband.



15. With right sides together, fold waistband along foldline. Stitch ends. Trim.



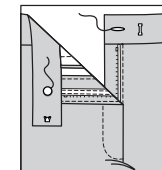
16. Turn waistband RIGHT side out press. Pin pressed edge of band over seam, placing pins on OUTSIDE. On OUTSIDE, stitch in the ditch or "groove" of seam, catching in pressed edges on INSIDE. SLIPSTITCH extension edges together.



FINISHING

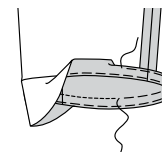
17. Make buttonhole in LEFT front waistband at marking. On INSIDE, sew button to RIGHT front at marking.

Sew hook and eye closure to waistband, as shown.



18. Turn up hem. Baste close to fold. Turn in 1/4" (6mm) on raw edge, easing in fullness if necessary. Baste hem in place close to upper edge. Press.

TOPSTITCH hem along upper basting, as shown.





Congrats!

You've completed your sewing adventure

SHARE YOUR LOOK



Post your pattern and tag us using [#knowMepatterns](#)
[@simplicity_creative_group](#)
[@simplicitymccallsuk](#)
[@simplicitymccallsaustralia](#)
for a chance to be featured on our social media.

Look for more PDF patterns at [simplicity.com](#) or for customers outside the U.S. and Canada visit [sewdirect.com](#) and [sewdirect.com.au](#)

Have a question or need help with your sewing project contact us:

[Simplicity.com](#)

[Sewdirect.com](#)

[Sewdirect.com.au](#)



McCall's ©2025 a division of IG Design Group Americas Inc. • Atlanta, GA 30342 USA [www.thedesigngroup.com](#) • All Rights Reserved. [www.mccall.com](#) • Made in the U.S.A. Fabriqué aux États-Unis.

To be used for individual private home use only and not for commercial or manufacturing purposes. • A usage privé seulement et non à des fins commerciales ou de production en série. • Para uso privado solamente, no se puede utilizar con propósitos de comercialización o de producción en serie.