



Easy

MISSES' TOP, SHORTS AND PANTS

**Suggested Fabrics:** Challis, Charmeuse, Cotton Blends, Cotton Lawn, Crepe de Chine, Silky Types, Voile.  
**Interfacing:** Lightweight Fusible.

**Notions:** B: One 3/8" (1.5cm) button. C,D: One 7" (18cm) invisible zipper, 3/4 yds. (0.7m) of 1 1/4" (3cm) elastic.

Sizes	6	8	10	12	14	16	18	20	22	24
European	32	34	36	38	40	42	44	46	48	50

BODY MEASUREMENTS: Select pattern size based on body measurements

	30 1/2	31 1/2	32 1/2	34	36	38	40	42	44	46	Ins.
Bust	30 1/2	31 1/2	32 1/2	34	36	38	40	42	44	46	Ins.
Waist	23	24	25	26 1/2	28	30	32	34	37	39	"
Hip-9" below waist	32 1/2	33 1/2	34 1/2	36	38	40	42	44	46	48	"
Back-neck to waist	15 1/2	15 3/4	16	16 1/4	16 1/2	16 3/4	17	17 1/4	17 1/2	17 3/4	"

Top A	45**	1 1/4	1 1/4	1 1/4	1 1/4	1 1/4	1 1/4	1 1/4	1 1/4	1 1/4	1 3/4	Yds.
60**	1	1	1	1 1/8	1 1/8	1 1/8	1 1/8	1 1/8	1 1/8	1 1/8	1 1/4	"

Interfacing A,B	20"	7/8	7/8	1	1	1	1	1	1	1	1	Yds.
Top B	45**	1 1/8	1 1/8	1 1/4	1 1/4	1 1/4	1 1/4	1 1/2	1 1/2	1 1/2	1 1/2	Yds.
60**	3/8	7/8	7/8	1	1	1	1	1 1/4	1 1/4	1 1/4	"	

Shorts C	45**	1 1/4	1 1/4	1 1/4	1 1/4	1 1/4	1 1/4	1 1/2	1 1/2	1 1/2	1 1/2	Yds.
60**	7/8	7/8	7/8	7/8	7/8	1	1 1/8	1 1/8	1 1/8	1 1/8	"	

Interfacing C,D	20"	1/4	1/4	1/4	1/4	1/4	1/4	3/4	3/4	3/4	Yd.	
Pants D	45**	2 3/4	2 7/8	2 7/8	2 7/8	2 7/8	2 7/8	2 7/8	2 7/8	3	3	Yds.
60**	1 1/8	1 1/8	1 1/8	1 1/8	1 1/8	1 3/4	2 1/4	2 1/4	2 3/8	2 3/8	"	

FINISHED GARMENT MEASUREMENTS (Includes Design and Wearing Ease)

A,B Bust	33	34	35	36 1/2	38 1/2	40 1/2	42 1/2	44 1/2	46 1/2	48 1/2	Ins.
A,B Waist	31	32	33	34 1/2	36 1/2	38 1/2	40 1/2	42 1/2	44 1/2	46 1/2	"
C,D Hip	38	39	40	41 1/2	43 1/2	45 1/2	47 1/2	49 1/2	51 1/2	53 1/2	"

Width, each leg	Shorts C	22 3/4	23 1/2	24 1/4	25 1/4	27	28 1/4	29 1/2	30 3/4	32	33 1/4	Ins.
Pants D	20 1/4	20 3/4	21 1/4	21 3/4	22 1/4	22 3/4	23 1/4	23 3/4	24 1/4	24 3/4	"	

Finished back length from base of neck	Top A,B	22 1/2	22 3/4	23	23 1/4	23 1/2	23 3/4	24	24 1/4	24 1/2	24 3/4	Ins.
Finished side length from waist (C,D sits 1" below waist)	Shorts C	14 1/2	14 3/4	15	15 1/4	15 1/2	15 3/4	16	16 1/4	16 1/2	16 3/4 <td>Ins.</td>	Ins.
Pants D	41 1/2	41 3/4	42	42 1/4	42 1/2	42 3/4	43	43 1/4	43 1/2	43 3/4	"	

\*with nap \*\*without nap

Facile

HAUT, SHORT ET PANTALON POUR JEUNES FEMMES

**Tissus Conseillés:** Challis, Charmeuse, Cottonnades, Linon de coton, Crêpe de Chine, Types soie, Voile. **Entoilage:** Thermocollant léger.

**Mercerie:** B: 1 bouton de 1.5cm. C,D: 1 fermeture à glissière invisible de 18cm, 0.7m d'élastique de 3cm.

Tailles	6	8	10	12	14	16	18	20	22	24
Françaises	34	36	38	40	42	44	46	48	50	52
Européen	32	34	36	38	40	42	44	46	48	50

MESURES DU CORPS: Choisissez la taille du patron basée sur les mesures du corps

Poitrine	78	80	83	87	92	97	102	107	112	117	cm
Taille	58	61	64	67	71	76	81	87	94	99	"

Hanches (23cm au-dessous de la taille)	83	85	88	92	97	102	107	112	117	122	cm
Dos du cou à la taille	39.5	40	40.5	41.5	42	42.5	43	44	44.5	45	"

Haut A	115cm*	1.1	1.1	1.1	1.1	1.1	1.1	1.5	1.5	1.5	1.5	m
150cm*	0.9	0.9	0.9	0.9	0.9	0.9	0.9	1.1	1.1	1.1	1.1	"

Entoilage A,B	51cm	0.8	0.8	0.8	0.9	0.9	0.9	0.9	0.9	0.9	0.9	m
Haut B	115cm*	1.0	1.0	1.0	1.1	1.1	1.3	1.3	1.4	1.4	1.4	m
150cm*	0.8	0.8	0.8	0.9	0.9	0.9	0.9	1.1	1.1	1.1	"	

Short C	115cm*	1.1	1.1	1.1	1.1	1.1	1.1	1.3	1.4	1.4	1.4	m
150cm*	0.8	0.8	0.8	0.8	0.8	0.8	0.9	1.0	1.0	1.0	"	

Entoilage C,D	51cm	0.2	0.2	0.2	0.2	0.2	0.2	0.2	0.7	0.7	0.7	m
Pantalon D	115cm*	2.5	2.5	2.6	2.6	2.6	2.6	2.6	2.6	2.7	2.7	m
150cm*	1.5	1.5	1.5	1.5	1.5	1.6	2.1	2.1	2.4	2.4	"	

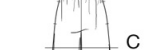
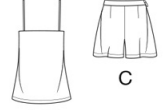
MESURES DES VÊTEMENTS FINI (Motif et aisance de port compris)

A,B Poitrine	84	86	89	93	98	103	108	113	118	123	m
A,B Taille	79	81	84	88	93	98	103	108	113	118	"
C,D Hanches	97	99	102	105	110	116	121	126	131	136	"

Largeur, chaque jambe	Short C	58	60	62	65	69	72	75	78	81	84	m
Pantalon D	51	53	54	55	57	58	59	60	62	63	"	

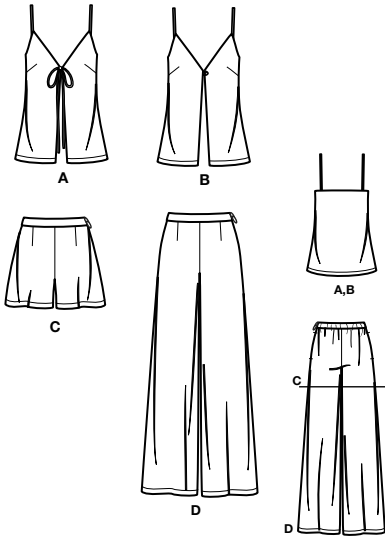
Longueur finie -- dos, votre nuque à l'ourlet	Haut A,B	57	58	58	59	60	60	61	62	62	63	m
Longueur finie -- côté, taille à l'ourlet (C,D repose 2.5cm dessous de la taille)	Short C	37	37	38	39	39	40	41	41	42	43	m
Pantalon D	105	106	107	107	108	109	109	110	110	111	"	

\*avec sens \*\*sans sens

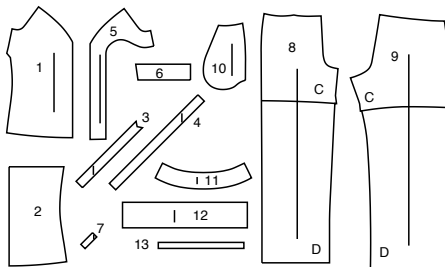




@thestitchfitz



13 PATTERN PIECES



- 1 Front-A,B
- 2 Back-A,B
- 3 Shoulder Strap-A,B
- 4 Tie End-A
- 5 Front Facing-A,B
- 6 Back Facing-A,B
- 7 Loop-B
- 8 Front-C,D
- 9 Back-C,D
- 10 Pocket-C,D
- 11 Front Waistband-C,D
- 12 Back Casing-C,D
- 13 Elastic Guide for Back-C,D

**PATTERN MARKINGS**

**GRAINLINE:** Place on straight grain of fabric, parallel to selvage or fold.

**FOLDLINE:** Place line on fold of fabric.

**BUTTONHOLE MARKING:** Indicates exact length and placement of buttonholes.

**BUTTON MARKING:** Indicates button placement.

**NOTCHES AND SYMBOLS:** For matching seams and construction details.

Indicates the Bustline, Waistline, Hip and/or Biceps. Measurements refer to circumference of Finished Garment (Body Measurement + Wearing Ease + Design Ease). Adjust pattern if necessary. The measurement excludes pleats, tucks, darts and seam allowances.

**SEAM ALLOWANCE:** 5/8" (1.5cm) included unless otherwise indicated, but not printed on tissue.

**ADJUST IF NECESSARY**

Lengthen or Shorten at adjustment lines (==) or where indicated on pattern. If substantial length is added, you may need to purchase additional fabric.

**TO SHORTEN:** Crease along adjustment line. Make a fold half the amount needed. Tape in place.

**TO LENGTHEN:** Slash between adjustment lines. Spread amount as needed, keeping edges parallel. Tape over paper.

When Alteration lines are not on tissue, lengthen or shorten at lower edge.

**SHRINK FABRIC** if not labeled pre-shrunk. Press.

**CIRCLE LAYOUT** for View, Size, Fabric Width. Use **WITH NAP** layout for fabrics with one-way designs, nap, pile or surface shading. Because most knits have surface shading, a with nap layout is used.

For **DOUBLE THICKNESS (WITH FOLD)** - fold fabric with right sides together.

**\* DOUBLE THICKNESS (WITHOUT FOLD)** - For fabrics with nap, fold fabric crosswise, right sides together. Mark as shown. Cut along crosswise fold of fabric (A). Turn upper layer 180° so arrows go in same direction and place over lower layer, right sides together (B).

For **SINGLE THICKNESS** - place fabric right side up. (For Fur Pile fabrics, place pile side down.)

**CUTTING AND MARKING**

★ Cut other pieces first, allowing enough fabric to cut this piece. Open fabric. For "Cut 1" pieces, cut piece once on single layer of fabric with piece face up on right side of fabric.

Pattern may have cutting lines for several sizes. Select the proper cutting line or pattern pieces for your size.

Before **CUTTING** place all pieces on fabric according to layout. Pin. (**Layouts show approximate position of pattern pieces; position may vary according to your pattern size.**) Cut **ACCURATELY**, cutting notches outward.

Before removing pattern, **TRANSFER MARKINGS** and lines of construction to Wrong Side of fabric, using the Pin and Chalk Pencil method or Tracing Paper and Dressmaker Wheel. Markings needed on right side of fabric should be traced thread.

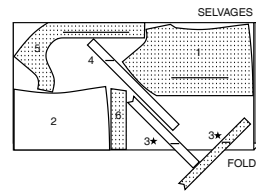
**NOTE:** Broken-line boxes (a| b| c|) in layouts represent pieces cut by measurements provided.

**CUTTING LAYOUTS**

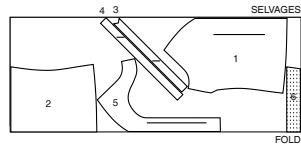
RIGHT SIDE OF PATTERN	WRONG SIDE OF PATTERN	RIGHT SIDE OF FABRIC	WRONG SIDE OF FABRIC
-----------------------	-----------------------	----------------------	----------------------

**TOP A**  
 USE PIECES: 1 2 3 4 5 6

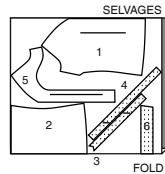
45" (115CM)  
 WITH NAP  
 SIZES 6 8 10 12 14 16



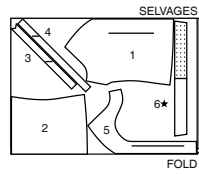
45" (115CM)  
 WITH NAP  
 SIZES 18 20 22 24



60" (150CM)  
 WITH NAP  
 SIZES 6 8 10 12 14 16

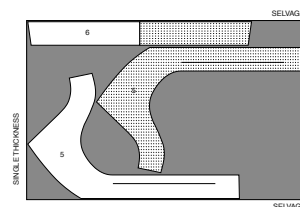


60" (150CM)  
 WITH NAP  
 SIZES 18 20 22 24



**INTERFACING A,B**  
 USE PIECES: 5 6

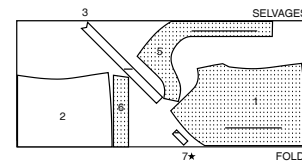
20" (51CM)  
 WITHOUT NAP  
 ALL SIZES



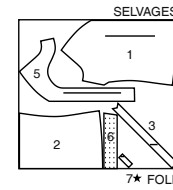
**TOP B**

USE PIECES: 1 2 3 5 6 7

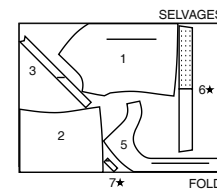
45" (115CM)  
 WITH NAP  
 ALL SIZES



60" (150CM)  
 WITH NAP  
 SIZES 6 8 10 12 14 16 18



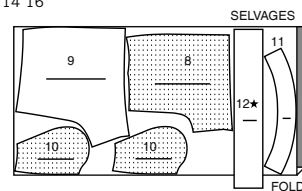
60" (150CM)  
 WITH NAP  
 SIZES 20 22 24



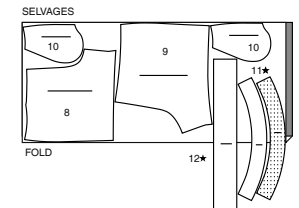
**SHORTS C**

USE PIECES: 8 9 10 11 12

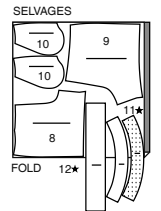
45" (115CM)  
 WITH NAP  
 SIZES 6 8 10 12 14 16



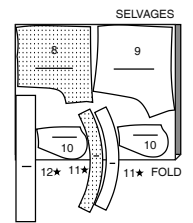
45" (115CM)  
 WITH NAP  
 SIZES 18 20 22 24



60" (150CM)  
 WITH NAP  
 SIZES 6 8 10 12 14 16



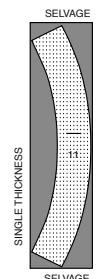
60" (150CM)  
 WITH NAP  
 SIZES 18 20 22 24



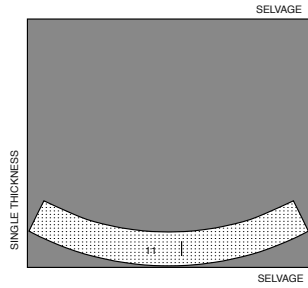
**INTERFACING C,D**

USE PIECES: 11

20" (51CM)  
 WITHOUT NAP  
 SIZES 6 8 10 12 14 16 18

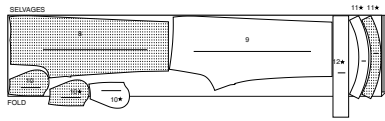


20" (51CM)  
WITHOUT NAP  
SIZES 20-22-24

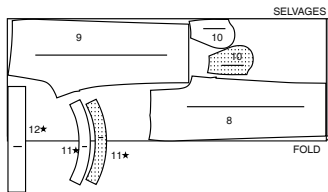


**PANTS D**  
USE PIECES: 8 9 10 11 12

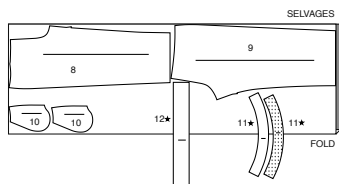
45" (115CM)  
WITH NAP  
ALL SIZES



60" (150CM)  
WITH NAP  
SIZES 6 8 10 12 14 16 18 20

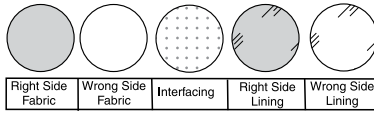


60" (150CM)  
WITH NAP  
SIZES 22 24



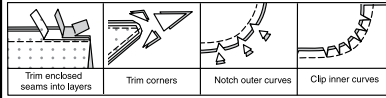
**SEWING INFORMATION**

**FABRIC KEY**



**SEAM ALLOWANCES**

Use 5/8" (1.5cm) seam allowances unless otherwise indicated.



**PIN AND FIT**

Pin or baste seams, **RIGHT SIDE TOGETHER**, matching notches. Fit garment before stitching major seams.

**PRESS**

Press seam allowances flat; then open unless otherwise stated. Clip where necessary so they lie flat.

**GLOSSARY**

**GLOSSARY OF SEWING METHODS**

Sewing methods shown in **BOLD** are defined below:

**DART** – To make dart, with **RIGHT** sides together, fold the fabric through the center of the dart, bringing broken lines and small dots together. On **INSIDE**, place pins at **RIGHT** angles to the broken lines. Stitch the dart from wide end to point.

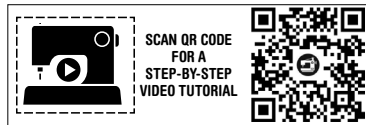
**TIP**– To prevent a "bubble" at the point, make the last few stitches right on the fold and leave the thread ends long enough to tie a knot. **DO NOT** back-stitch at the point.

Press the dart flat along the stitching to "blend" the stitches, then press dart as indicated in the Sewing Directions.

**EDGE FINISH** – Stitch 1/4" (6mm) from edge, turn under edge along stitching and stitch; or zigzag stitch, or overlock stitch raw edges.

**STAYSTITCH** – Stitch 1/2" (1.3cm) from cut edge in direction of arrows. This stitching stays in permanently to prevent stretching on curved edges. (Shown only in the first illustration.)

**UNDERSTITCH** – Press facing and seam away from garment, stitching through facing and seam allowances close to seam.



@thestitchfritz

**PATTERN PIECES WILL BE IDENTIFIED BY NUMBERS THE FIRST TIME THEY ARE USED.**

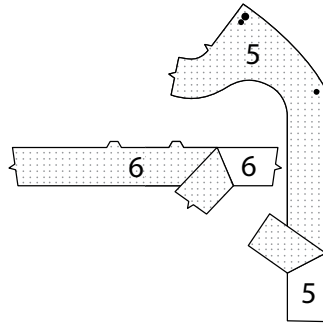
**STITCH 5/8" (1.5CM) SEAMS WITH RIGHT SIDES TOGETHER UNLESS OTHERWISE STATED.**

**SEWING DIRECTIONS**

**TOP A, B**

**INTERFACING**

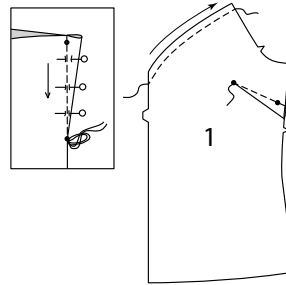
1. Pin interfacing to **WRONG** side of **FRONT FACING** (5) and **BACK FACING** (6). Fuse in place following manufacturer's directions.



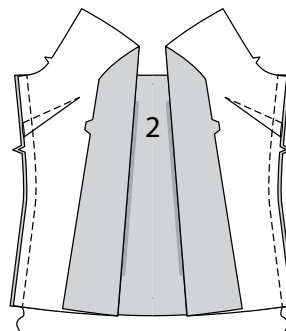
**FRONT AND BACK**

2. To **STAYSTITCH** upper edge of **FRONT** (1), stitch 1/2" (1.3cm) from cut edge in direction of arrows. This stitching stays in permanently to prevent stretching on curved edges. (Shown only in the first illustration.)

Stitch **DART** in front. Press down.

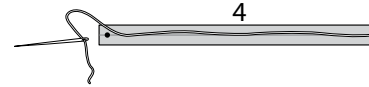


3. With **RIGHT** sides together and raw edges even, pin front to **BACK** (2) at side edges, matching notches. Stitch.



**TIE END A**

4. To make two front ties, fold **TIE END** (4) in half, lengthwise, with **RIGHT** sides together. Lightly press, setting in a crease. Open out tie end. On **OUTSIDE** of unmarked end, with a needle, attach a strong thread 1/8" (3mm) away from crease.



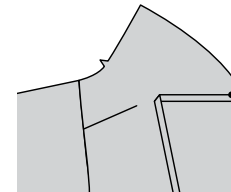
5. Fold tie end along crease with **RIGHT** sides together. Stitch long edge and unmarked end in a 3/8" (1cm), being careful not to catch in attached thread. Trim seam.



6. Draw needle eye forward, turning tie **RIGHT** side out.

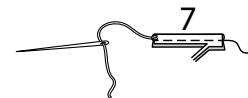


7. On **OUTSIDE**, pin marked ends of ties to front sections, matching small dots with raw edges even. Baste.



**LOOP B**

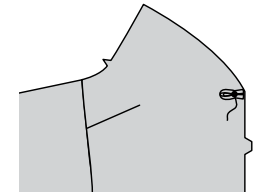
8. To make loop, fold **LOOP** (7) in half, lengthwise, with **RIGHT** sides together. Stitch long edge in a 1/4" (6mm) seam. Trim seam. With a needle, attach a strong thread to one end of loop.



9. Draw needle eye forward, through fold, turning loop **RIGHT** side out.

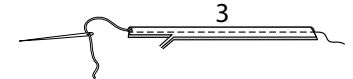


10. Fold loop, bringing ends together. On **OUTSIDE**, pin loop to **RIGHT** front, over small dot. Baste.

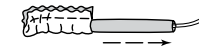


**CONTINUE AS FOLLOWS FOR BOTH VIEWS**

11. For each shoulder strap, fold **SHOULDER STRAP** (3) in half, lengthwise, with **RIGHT** sides together. Stitch long edge in a 3/8" (1cm) seam. Trim seam. With a needle, attach a strong thread to one end of strap.



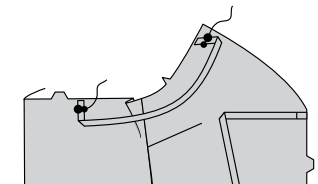
12. Draw needle eye forward, through fold, turning strap **RIGHT** side out.



13. On **OUTSIDE**, pin front end of strap to front, matching small and large dots. Baste.

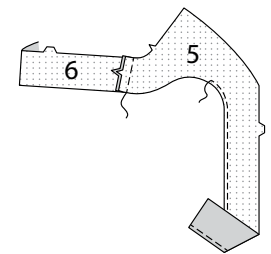
Try on garment. Turn up strap. Pin back end of strap to back between small and large dots, adjusting length to fit comfortably. Mark strap along back seamline, using tailor's chalk or a water-soluble marking pen.

On **OUTSIDE**, pin back end of strap to back between the dots, matching mark to seamline. Baste.

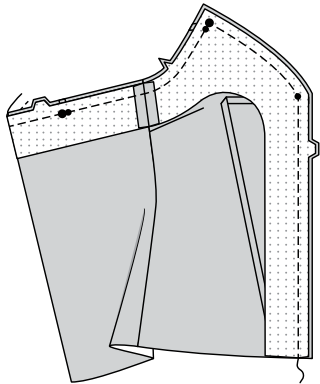


**FACING**

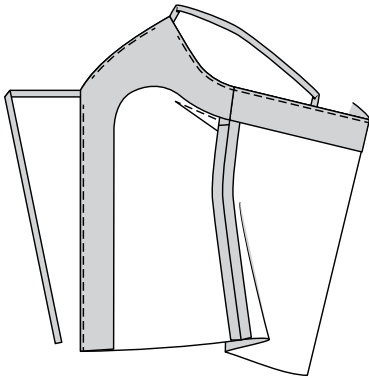
14. Stitch **FRONT FACING** (5) to **BACK FACING** (6) at side edges. **EDGE FINISH** inner edge.



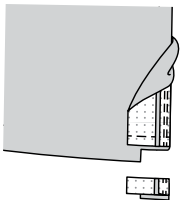
15. With RIGHT sides together and raw edges even, pin facing to top (over straps, ties, or loops) along front and upper edges. Stitch. Trim seam.



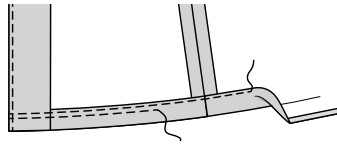
16. UNDERSTITCH the facing, as far as possible. Turn facing to INSIDE; press.



17. Turn lower edge of facing to OUTSIDE. Stitch along 1-1/4" (3.2cm) hemline. Trim facing close to stitching. Trim top to within 5/8" (1.5cm) of inner edge of facing.

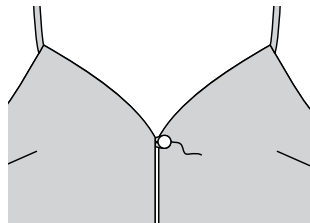


18. Turn facing to INSIDE; press, pressing up hem along marking. Press under 1/4" (6mm) on raw edge. Stitch hem in place close to inner pressed edge, starting at opening edges. If desired, stitch again 1/4" (6mm) below first stitching.



FINISHING B

19. Sew button to LEFT front under loop.

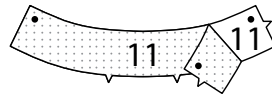


SHORTS C; PANTS D

NOTE: Finished garment is designed to be worn 1" (2.5cm) below waist.

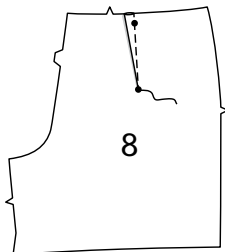
INTERFACING

1. Pin interfacing to WRONG side of FRONT WAISTBAND (11). Fuse in place following manufacturer's directions.

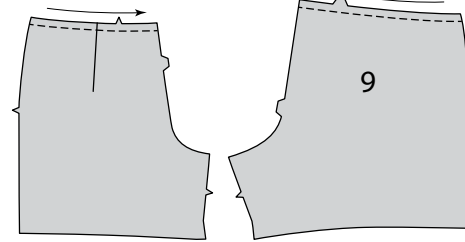


FRONT, BACK, AND POCKETS

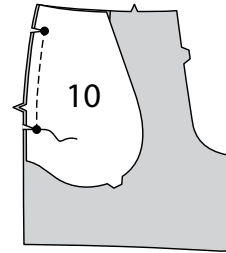
2. Stitch DART in FRONT (8) sections. Press toward front.



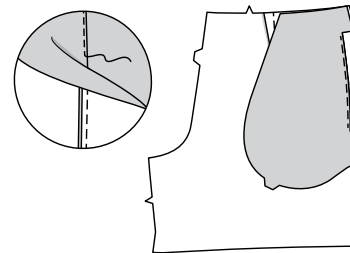
3. To STAYSTITCH upper edge of front and BACK (9), stitch 1/2" (1.3cm) from cut edge in direction of arrows. This stitching stays in permanently to prevent stretching on curved edges. (Shown only in the first illustration.)



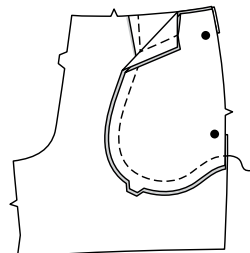
4. With RIGHT sides together, pin POCKET (10) to front, matching large dots and having raw edges even. Stitch seam between the large dots, back stitching at dots to reinforce the seam. Clip seam allowance to stitching at the large dots.



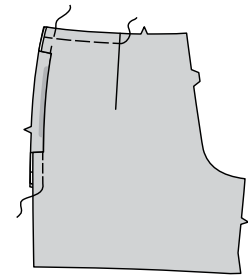
5. UNDERSTITCH the pocket. Turn pocket to INSIDE, turning out seam allowances above and below clips. Press.



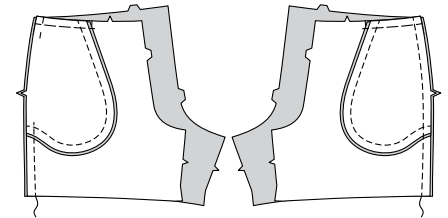
6. With RIGHT sides together, pin remaining pocket section to front and pocket, matching large dots and having raw edges even. Stitch pockets together along double notched edge.



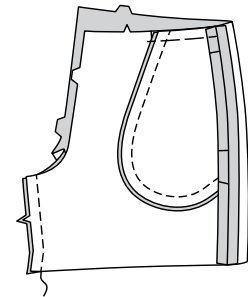
7. On OUTSIDE, baste raw edges of front and pocket together.



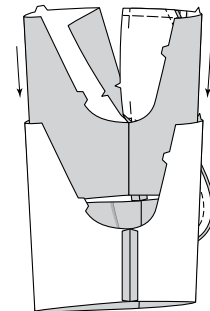
8. Stitch front to back at RIGHT side edges. Stitch front to back at LEFT side edges from lower edge to within 3" (7.5cm) of the notch, back-stitching at notch to reinforce the seam.



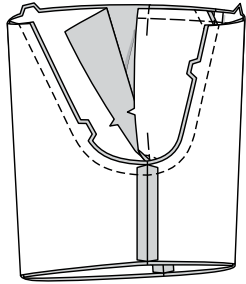
9. Stitch front to back along inner leg edges, matching notches.



10. With RIGHT sides together, insert one leg INSIDE the other.

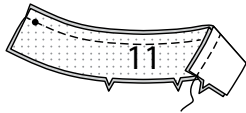


11. With RIGHT sides together, pin center seam, matching inner leg seams and notches. Stitch. To reinforce seam, stitch again over first stitching.



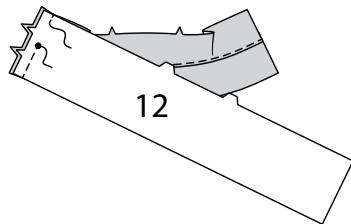
**WAISTBAND AND CASING**

12. With RIGHT sides together and raw edges even, pin FRONT WAISTBAND (11) to front waistband facing along upper edge. Stitch.

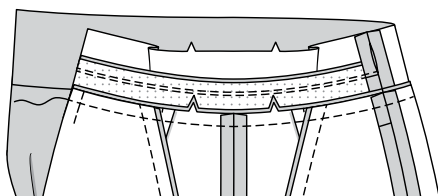


13. UNDERSTITCH the facing; press, pressing seam toward facing.

With RIGHT sides together, pin waistband and facing to BACK CASING (12) along RIGHT side edge, matching small dots and notches. Stitch waistband and casing from lower edge to small dot, back-stitching at dot to reinforce the seam. To make opening for elastic, stitch waistband facing to casing across seam allowance from upper edge to seamline.

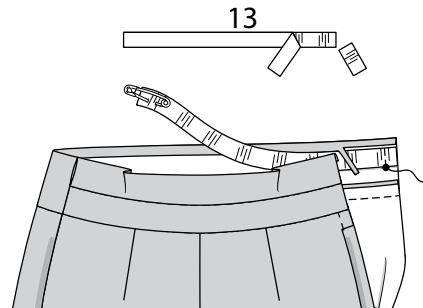


14. With RIGHT sides together and raw edges even, pin waistband and casing to upper edge of garment, matching notches. Stitch. Trim seam. Press seam toward waistband/casing, pressing waistband/casing out.



15. Cut a piece of elastic the length of the ELASTIC GUIDE FOR BACK (13). Transfer markings. Attach a safety pin to one edge of elastic. On INSIDE, pin free edge of elastic to LEFT side edge of casing with lower edge of elastic close to foldline. Stitch elastic in place along LEFT side edge.

Press under 1/2" (1.3cm) on upper edge of facing/casing. Trim to 1/4" (6mm).

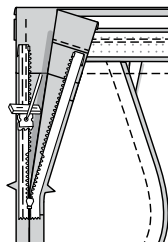


**INVISIBLE ZIPPER**

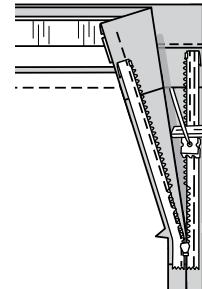
**NOTE:** Stitch the invisible zipper using an invisible zipper foot. Before you begin, be sure to line up your needle with the center of the invisible zipper foot or you may break your needle. When the coils are to the LEFT of the raw edge use the LEFT groove and when the coils are to the RIGHT of the raw edge use the RIGHT groove.

16. Open the zipper and press the tape flat on the WRONG side unrolling the coils. Do not press the coils. (Use a low iron setting.) Fold upper edge of zipper tape under and away from center. Tack.

On OUTSIDE, pin RIGHT side of the zipper face down on the RIGHT side of the zipper opening. Have the coil along the seam line, the tape within the seam allowance and the top stop just below the small dot, as shown. Hand-baste along center of the tape. Position zipper foot at the top of the zipper with RIGHT groove of the foot over coil. Stitch along tape to the notch. Back-stitch to reinforce.

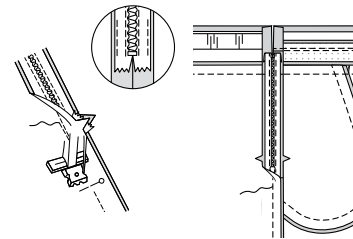


17. Pin the remaining half of the zipper to the LEFT side of the zipper opening in same manner, being careful not to catch in free edge of pocket. Make sure the upper and lower edges of the garment are even. Hand-baste along the center of the tape. Position zipper foot at the top of the zipper with LEFT groove over the coil. Stitch along tape to the notch. Back-stitch to reinforce.



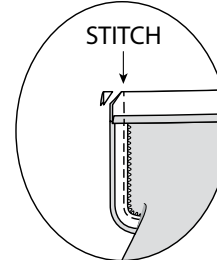
18. Close zipper and check that it is invisible from the OUTSIDE.

Pull the free ends of the zipper tape away from the seam allowance. Pin remaining LEFT side seam together below zipper. Position zipper foot all the way to the LEFT so the needle goes down through the outer notch of the foot. Start stitching seam 1/4" (6mm) above lowest stitch and slightly to the LEFT. Stitch remainder of seam connecting to previous stitching.



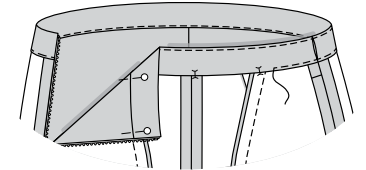
19. Open out LEFT side opening edges of garment, rolling zipper teeth away from the opening edge. Turn casing along foldline and facing along seamline to the OUTSIDE at ends.

Pin LEFT side opening edges together. Using an adjustable zipper foot, stitch across casing and facing 1/2" (1.3cm) from LEFT side edges, keeping zipper teeth free. Trim corners. Do not trim LEFT side edges.

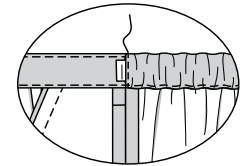
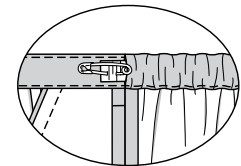


20. Turn casing/facing to INSIDE along foldline/seamline, turning side edges and zipper teeth back in place; press.

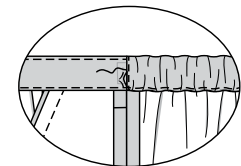
On INSIDE, pin inner pressed edge of casing/facing over seam, placing pins on OUTSIDE. On OUTSIDE, stitch waistband and casing close to seam, catching in pressed inner edges on the INSIDE, being careful not to catch in free edges of elastic.



21. Thread pinned end of elastic through casing, bringing safety pin out through opening in casing. Stitch elastic in place along waistband side seam, securely.

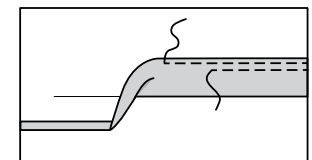


22. Remove safety pin. Tuck elastic under seam allowance of facing. Slip-stitch opening edges of facing and casing together.



**FINISHING**

23. Press up 1-1/4" (3.2cm) hem allowance. Turn under raw edge 1/4" (6mm); press. Stitch hem in place close to inner pressed edge, and if you prefer, stitch again 1/4" (6mm) from first stitching.





# Congrats!

You've completed your sewing adventure

---

## SHARE YOUR LOOK



Post your pattern and tag us using [#knowMepatterns](#)  
[@simplicity\\_creative\\_group](#)  
[@simplicitymccallsuk](#)  
[@simplicitymccallsaustralia](#)  
for a chance to be featured on our social media.

Look for more PDF patterns at [simplicity.com](#) or for customers outside the U.S. and Canada visit [sewdirect.com](#) and [sewdirect.com.au](#)

Have a question or need help with your sewing project contact us:  
[Simplicity.com](#)    [Sewdirect.com](#)    [Sewdirect.com.au](#)

