



Easy

GIRLS' AND MISSES' T-SHIRT AND SHORTS

Suggested Fabrics: A in Stretch Knits only such as Bamboo, Interlock, ITY, Rib Knit. See Stretch Gauge. **B:** Broadcloth, Chambray, Cotton Blends, Lightweight Linen Blends.

Notions: B: 1½ yds. (1.1m) of ¾" (2cm) elastic, 2 yd. (1.9m) of ½" (1.3cm) ribbon or twill tape.

Sizes	GIRLS'			MISSES'				
	S	M	L	XS	S	M	L	XL
	(7-8)	(10-12)	(14-16)	(4-6)	(8-10)	(12-14)	(16-18)	(20-22)
European				30-32	34-36	38-40	42-44	46-48

BODY MEASUREMENTS: Select pattern size based on body measurements

Chest/ Bust	26-27	28½-30	32-34	29½-30½	31½-32½	34-36	38-40	42-44	Ins.
Waist	23-23½	24½-25½	26½-27½	22-23	24-25	26½-28	30-32	34-37	"
Hip	27-28	30-32	34-36	31½-32½	33½-34½	36-38	40-42	44-46	"
Back-neck to waist	11½-12	12¾-13½	14¼-15	15¼-15½	15¾-16	16¼-16½	16¾-17	17½-17¾	"

T-Shirt A	60**	¾	¾	¾	¾	¾	¾	¾	¾	Yd.
Contrast (Sleeves, Neckband)	60**	½	½	½	¾	¾	¾	¾	¾	Yd.

Shorts B	45**	1¾	1¾	1¾	1½	1½	1½	1½	1½	Yds.
	60**	¾	¾	¾	1¼	1¼	1¼	1¼	1¼	"

FINISHED GARMENT MEASUREMENTS (Includes Design and Wearing Ease)

A Chest/Bust	29½	32	35½	36½	38½	42	46	50	Ins.
B Hip	34½	37	40½	40	42	45½	49½	53½	"
Width, lower edge									
T-Shirt A	29	31½	35	35½	37½	41	45	49	Ins.
Width, each leg									
Shorts B (excl. ruffle)	22¼	23¼	25¼	25½	27	29	31¾	33¾	Ins.
Finished back length from base of neck									
T-Shirt A	15¾	17	18¼	18½	19	19½	20	20½	Ins.
Finished side length from waist									
Shorts B (incl. ruffle)	8¼	9¼	10¼	10¾	11¼	11¾	12¼	12¾	Ins.

*with nap **without nap

Facile

T-SHIRT ET SHORT POUR FILLES ET JEUNES FEMMES

Tissus Conseillés: A en tricot extensibles seulement tels que Bamboo, Interlock, Tricot interlock en fil retors, Tricot à côtes. Reportez-vous au taux d'élasticité. **B:** Broadcloth, Chambray, Cotonnades, Lin mélangés léger.

Merceria: B: 1.1m d'élastique de 2cm, 1.9m ruban ou de talonnette de coton de 1.3cm.

Tailles	FILLES			JEUNES FEMMES				
	P/S	M/M	G/L	TP/XS	P/S	M/M	G/L	TG/XL
	(7-8)	(10-12)	(14-16)					

Françaises				32-34	36-38	40-42	44-46	48-50
Européen				30-32	34-36	38-40	42-44	46-48

MESURES DU CORPS: Choisissez la taille du patron basée sur les mesures du corps

Poitrine	66-68.5	72.5-76	81.5-87	75-77	80-83	87-92	97-102	107-112	cm
Taille	58.5-59.5	62-65	67.5-70	56-58	61-64	67-71	76-81	87-94	"
Hanches	68.5-71	76-81.5	86.5-91.5	80-83	85-88	92-97	102-107	112-117	"
Dos du cou à la taille	29-30.5	32.5-34.5	36-38	39-39.5	40-40.5	41.5-42	42.5-43	44-44.5	"

T-shirt A	150cm*	0.6	0.6	0.6	0.7	0.7	0.7	0.7	m
Contraste (Manches, Bande d'encolure)	150cm*	0.5	0.5	0.5	0.6	0.6	0.6	0.6	m

Short B	115cm*	1.1	1.3	1.3	1.4	1.4	1.5	1.5	1.5	m
	150cm*	0.7	0.8	0.8	1.0	1.0	1.0	1.1	1.1	"

MESURES DES VÊTEMENTS FINI (Motif et aisance de port compris)

A Poitrine	75	81	90	93	98	107	117	127	cm
B Hanches	88	94	103	102	107	116	126	136	"
Largeur à l'ourlet									
T-Shirt A	74	80	89	90	95	104	114	124	cm
Largeur, chaque jambe									
Short B (sans le volant)	57	60	65	65	69	74	80	86	cm
Longueur finie – dos, votre nuque à l'ourlet									
T-Shirt A	74	80	89	90	95	104	114	124	cm
Longueur finie – côté, taille à l'ourlet									
Short B (y compris le volante)	21	23	26	27	29	30	31	32	cm

*avec sens **sans sens



A

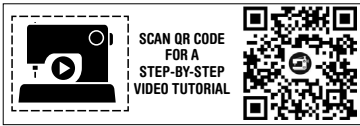


B

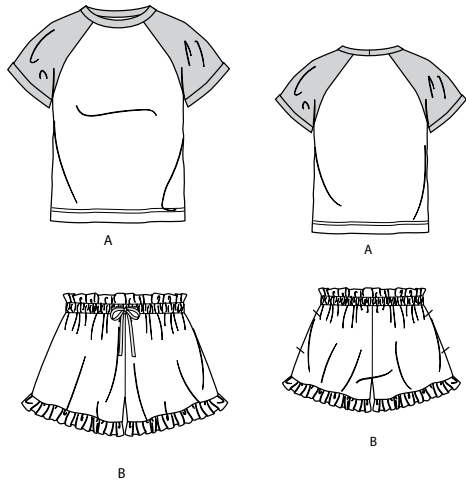
Use the 1 inch (2.54cm) box to ensure you are using rule at 100%
 Utilisez la boîte de 2,54 cm pour vous assurer d'utiliser la règle à 100%.
 Utilizar un cuadrado de 2.54 cm para asegurarse de estar usando la regla al 100%.



When using the Pick-A-Knit® rule to measure your fabrics stretch capacity, rule must be viewed or printed at 100%.
 Quand vous utilisez le taux d'élasticité pour mesurer la capacité d'élasticité des tissus, le taux doit être visible ou imprimé à 100%.
 Al utilizar el calibre de elasticidad para medir la capacidad de elasticidad de las telas, el calibre debe estar visible o impreso al 100%.



@hollydollydarling



PATTERN MARKINGS

GRAINLINE: Place on straight grain of fabric, parallel to selvage or fold.
FOLDLINE: Place line on fold of fabric.
BUTTONHOLE MARKING: Indicates exact length and placement of buttonholes.
BUTTON MARKING: Indicates button placement.
NOTCHES AND SYMBOLS: For matching seams and construction details.
 Indicates the Bustline, Waistline, Hip and/or Biceps. Measurements refer to circumference of Finished Garment (Body Measurement + Wearing Ease + Design Ease). Adjust pattern if necessary. The measurement excludes pleats, tucks, darts and seam allowances.
SEAM ALLOWANCE: 5/8" (1.5cm) included unless otherwise indicated, but not printed on tissue.

ADJUST IF NECESSARY

Lengthen or Shorten at adjustment lines (==) or where indicated on pattern. If substantial length is added, you may need to purchase additional fabric.
TO SHORTEN: Crease along adjustment line. Make a fold half the amount needed. Tape in place.
TO LENGTHEN: Slash between adjustment lines. Spread amount as needed, keeping edges parallel. Tape over paper.
 When Alteration lines are not on tissue, lengthen or shorten at lower edge.

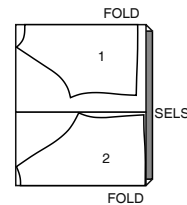
CUTTING AND MARKING

SHRINK FABRIC if not labeled pre-shrunk. Press.
CIRCLE LAYOUT for View, Size, Fabric Width.
 Use **WITH NAP** layout for fabrics with one-way designs, nap, pile or surface shading. Because most knits have surface shading, a with nap layout is used.
 For **DOUBLE THICKNESS (WITH FOLD)** - fold fabric with right sides together.
*** DOUBLE THICKNESS (WITHOUT FOLD)** - For fabrics with nap, fold fabric crosswise, right sides together. Mark as shown. Cut along crosswise fold of fabric (A). Turn upper layer 180° so arrows go in same direction and place over lower layer, right sides together (B).
 For **SINGLE THICKNESS** - place fabric right side up. (For Fur Pile fabrics, place pile side down.)
 ★ Cut other pieces first, allowing enough fabric to cut this piece. Open fabric. For "Cut 1" pieces, cut piece once on single layer of fabric with piece face up on right side of fabric.
 Pattern may have cutting lines for several sizes. Select the proper cutting line or pattern pieces for your size.
 Before **CUTTING** place all pieces on fabric according to layout. Pin. (**LAYOUTS show approximate position of pattern pieces; position may vary according to your pattern size.**) Cut **ACCURATELY**, cutting notches outward.
 Before removing pattern, **TRANSFER MARKINGS** and lines of construction to Wrong Side of fabric, using the Pin and Chalk Pencil method or Tracing Paper and Dressmaker Wheel. Markings needed on right side of fabric should be thread traced.
NOTE: Broken-line boxes (a| b| c|) in layouts represent pieces cut by measurements provided.

CUTTING LAYOUTS

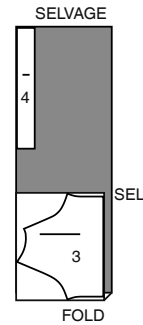
A T-SHIRT

USE PIECES 1 2
 60" (150CM)
 WITH NAP
 GIRLS SIZES S M L
 MISS SIZES XS S M L XL

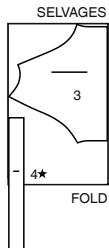


A CONTRAST

USE PIECES 3 4
 60" (150CM)
 WITH NAP
 GIRLS SIZES S M L

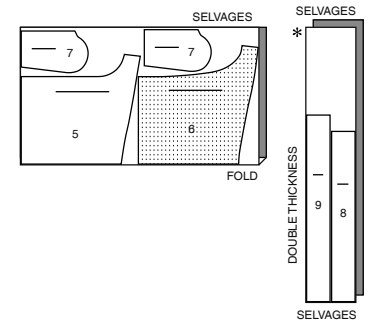


60" (150CM)
 WITH NAP
 MISS SIZES XS S M L XL

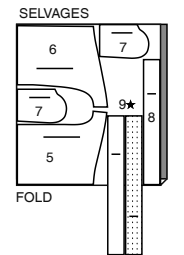


B SHORTS

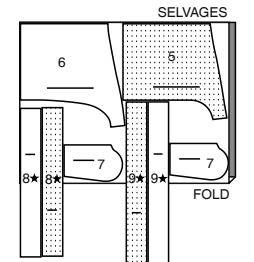
USE PIECES 5 6 7 8 9
 45" (115CM)
 WITH NAP
 GIRLS SIZES S M L
 MISS SIZES XS S M L XL



60" (150CM)
 WITH NAP
 GIRLS SIZES S M L

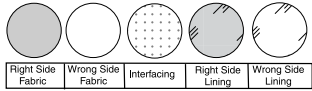


60" (150CM)
 WITH NAP
 MISS SIZES XS S M L XL



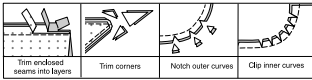
- 1 Front-A
- 2 Back-A
- 3 Sleeve-A
- 4 Neckband-A
- 5 Front-B
- 6 Back-B
- 7 Pocket-B
- 8 Front Ruffle-B
- 9 Back Ruffle-B
- 10 Guide for Elastic-B

SEWING INFORMATION
FABRIC KEY



SEAM ALLOWANCES

Use 5/8" (1.5cm) seam allowances unless otherwise indicated.



PIN AND FIT

Pin or baste seams, **RIGHT SIDE TOGETHER**, matching notches. Fit garment before stitching major seams.

PRESS

Press seam allowances flat; then open unless otherwise stated. Clip where necessary so they lie flat.

GLOSSARY

Sewing methods shown in **BOLD** are defined below:

GATHER – Loosen needle tension slightly. With **RIGHT** side up, stitch 5/8" (1.5cm) from cut edge using a long stitch. Stitch again 1/4" (6mm) from the first stitching within the seam allowance.

UNDERSTITCH – Press facing and seam away from garment, stitching through facing and seam allowances close to seam.



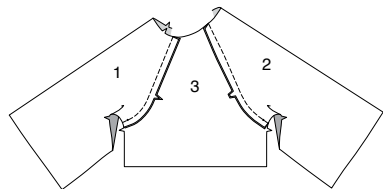
@hollydollydarling

PATTERN PIECES WILL BE IDENTIFIED BY NUMBERS THE FIRST TIME THEY ARE USED.

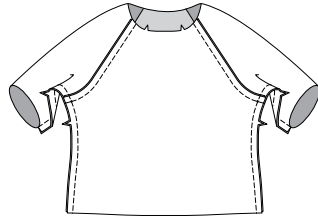
STITCH 5/8" (1.5CM) SEAMS WITH RIGHT SIDES TOGETHER UNLESS OTHERWISE STATED.

T-SHIRT A

1. With **RIGHT** sides together and raw edges even, pin **SLEEVE** (3) sections to **FRONT** (1) and **BACK** (2), matching small dots and notches. Stitch. Press seam toward sleeve.



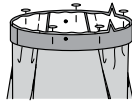
2. Pin front to back at side and underarm edges, matching armhole seams and notches. Stitch.



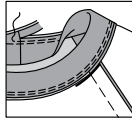
3. Stitch center back seam of **NECKBAND** (4). Fold band in half, lengthwise, with **WRONG** sides together; press. Pin.



4. On **OUTSIDE**, pin band to neck edge, matching centers, small dots, and notches, having raw edges even.



5. Stitch, stretching the band to fit. Stitch again 1/4" (6mm) away from first stitching within the seam allowance. Trim seam close to second stitching. Press seam toward garment, pressing band out.



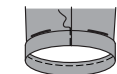
6. On **OUTSIDE**, straight or zigzag stitch garment close to neck seam.



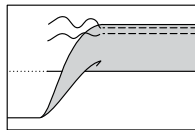
7. Fold lower edge of sleeve to **INSIDE** along foldline for cuff. Press. Stitch 1/4" (6mm) from raw edge.



8. Press up pressed edge of cuff 1" (2.5cm). On **OUTSIDE**, stitch across cuff in the ditch of the underarm seam through all thicknesses.

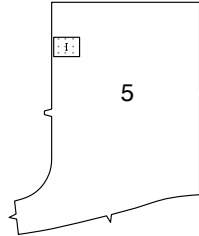


9. Press up 1-1/4" (3.2cm) hem allowance of lower edge of shirt. Stitch 1/4" (6mm) from raw edge, and 1/4" (6mm) away from first stitching.



SHORTS B

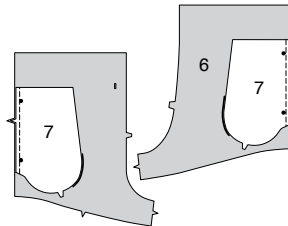
1. Cut two pieces of light weight fusible interfacing 2" (5cm) wide by 1-1/2" (3.8cm) high from a remnant. To make openings for drawstring, on **INSIDE**, center one piece of interfacing to each **FRONT** (5) section over buttonhole marking, and fuse in place following manufacturer's directions.



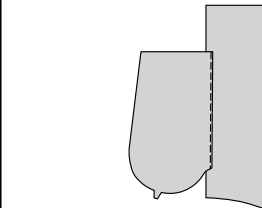
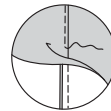
2. On **OUTSIDE**, make buttonholes at markings



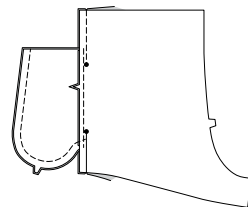
3. With **RIGHT** sides together, pin **POCKET** (7) to front, matching large dots, having raw edges even. Stitch in 3/8" (1cm) seam. Stitch pocket to **BACK** (6) in the same manner.



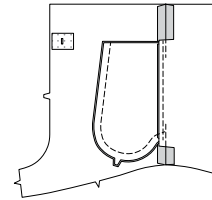
4. UNDERSTITCH the front pocket. Press seams toward pockets, pressing pockets out.



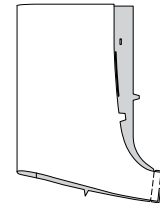
5. Pin front to back at side seams, matching large dots. Stitch side seams, leaving an opening between large dots. Stitch pocket edges together from side seam to upper edge.



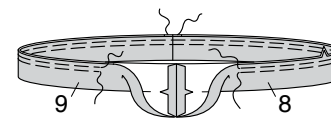
6. Clip shorts back seam allowance above and below pocket. Press seam open above and below clip. Press pocket toward front.



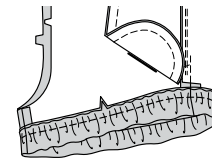
7. Stitch front to back at inner leg edges.



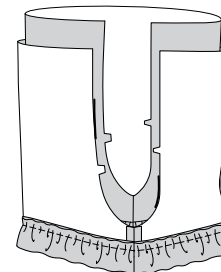
8. With **RIGHT** sides together, stitch **FRONT RUFFLE** (8) to **BACK RUFFLE** (9) at side edges, matching notches. Fold ruffle in half, lengthwise, with **WRONG** sides together. **GATHER** upper edge, breaking stitching at seams.



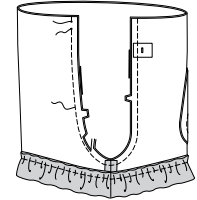
9. On **OUTSIDE**, pin ruffle to lower edge of leg, matching seams and notches, pulling up gathering stitches to fit. Baste; stitch. Press seam toward leg, pressing ruffle out



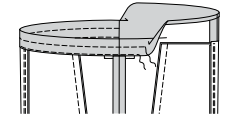
10. With **RIGHT** sides together, insert one leg **INSIDE** the other.



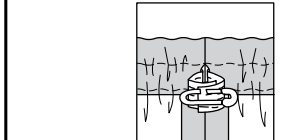
11. Pin center seam, matching inner leg seams and notches. Stitch, leaving an opening in center back between the small dots, back-stitching at dots to reinforce the seam. To reinforce seam, stitch again over first stitching. Trim seam. Press seam open.



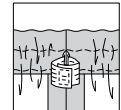
12. To form casing for elastic, press under 3/8" (1cm) on upper edge of shorts. Press upper edge to **INSIDE** along foldline. Stitch close to inner pressed edge, catching in upper edge of pockets. Stitch again along stitching line.



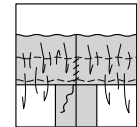
13. Cut a piece of elastic the length of the **GUIDE FOR ELASTIC** (10). Insert elastic through opening in casing. Overlap ends and hold with a safety pin. Try on shorts and adjust to fit.



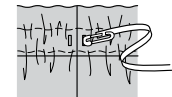
14. Stitch ends of elastic together securely.



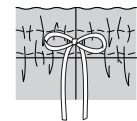
15. Slipstitch opening edges of casing together. Distribute fullness evenly.



16. For drawstring, cut one piece of ribbon or twill tape the length of the elastic guide, plus 30" (76cm). Attach a safety pin to one end and insert into one drawstring opening. Thread drawstring through casing, and out through remaining opening.



17. Pull out ends evenly and tie into a bow.





Congrats!

You've completed your sewing adventure

SHARE YOUR LOOK



Post your pattern and tag us using [#knowMepatterns](#)
[@simplicity_creative_group](#)
[@simplicitymccallsuk](#)
[@simplicitymccallsaustralia](#)
for a chance to be featured on our social media.

Look for more PDF patterns at [simplicity.com](#) or for customers outside the U.S. and Canada visit [sewdirect.com](#) and [sewdirect.com.au](#)

Have a question or need help with your sewing project contact us:

[Simplicity.com](#)

[Sewdirect.com](#)

[Sewdirect.com.au](#)



McCall's ©2025 a division of IG Design Group Americas Inc. • Atlanta, GA 30342 USA [www.thedesigngroup.com](#) • All Rights Reserved. [www.mccall.com](#) • Made in the U.S.A. Fabriqué aux États-Unis.

To be used for individual private home use only and not for commercial or manufacturing purposes. • A usage privé seulement et non à des fins commerciales ou de production en série. • Para uso privado solamente, no se puede utilizar con propósitos de comercialización o de producción en serie.