


For customers outside of the U.S. and Canada

sewdirect.com sewdirect.com.au



Shop all the pattern brands you love @
Simplicity®.com




ALISHA GRACE

know**ME**
BY missalishagrace


ME2120



Scan QR code for a Sew-Along video tutorial.



@missalishagrace



Designed and printed in USA

MISSSES' DRESS WITH SLEEVE AND LENGTH VARIATIONS													
Suggested Fabrics: Charmeuse, Crepe de Chine, Double Georgette, Silky Types. Lining: Cotton Blends, Polyester Blends, Silky Types.													
Notions: A,B: One 14" (36cm) invisible zipper.													
Sizes	8	10	12	14	16	18	20	22	24	26			
European	34	36	38	40	42	44	46	48	50	52			
BODY MEASUREMENTS Select pattern size based on body measurements													
Bust	31½	32½	34	36	38	40	42	44	46	48	Ins.		
Waist	24	25	2 6½	28	30	32	34	37	39	41	"		
Hip-9" below waist	33½	34½	36	38	40	42	44	46	48	50	"		
Back-neck to waist	15¾	16	16¼	16½	16¾	17	17¼	17½	17¾	18	"		
Dress A	60** - 1½ yds.												
Contrast (Bodice)													
45**	¾	¾	¾	¾	¾	¾	¾	¾	¾	¾	¾	Yd.	
60**	¾	¾	¾	¾	¾	¾	¾	¾	¾	¾	¾	"	
A,B Lining													
45**	¾	¾	¾	¾	¾	¾	¾	¾	¾	¾	¾	Yd.	
60**	¾	¾	¾	¾	¾	¾	¾	¾	¾	¾	¾	"	
Dress B	60**	3¼	3¼	3¼	3¼	3¾	3¾	3¾	3¾	3¾	3¾	Yds.	
FINISHED GARMENT MEASUREMENTS (Includes Design and Wearing Ease)													
A,B Bust													
	33	34	35½	37½	39½	41½	43½	45½	47½	49½	Ins.		
Width, lower edge													
Dress A	74	75	76½	78½	80½	82½	84½	86½	88½	90½	Ins.		
Dress B	84	85	86½	88½	90½	92½	94½	96½	98½	100½	"		
Finished back length from base of neck													
Dress A	33¾	34	34¾	34½	34¾	35	35¼	35½	35¾	36	Ins.		
Dress B	51¾	52	52¼	52½	52¾	53	53¼	53½	53¾	54	"		
*with nap **without nap													

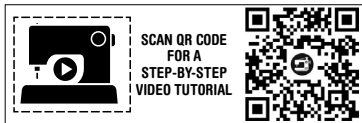
*with nap **without nap

ROBE AVEC VARIATIONS DE MANCHE ET DE LONGUEUR POUR JEUNES FEMMES													
Tissus Conseillés: Charmeuse, Crêpe de chine, Crêpe georgette double, Types soie. Doublure: Cotonnades, Mélanges de polyester, Types soie.													
Mercerie: A,B: 1 fermeture à glissière invisible de 36cm.													
Tailles	8	10	12	14	16	18	20	22	24	26			
Françaises	36	38	40	42	44	46	48	50	52	54			
Européen	34	36	38	40	42	44	46	48	50	52			
MESURES DU CORPS: Choisissez la taille du patron basée sur les mesures du corps													
Poitrine	80	83	87	92	97	102	107	112	117	122	cm		
Taille	61	64	67	71	76	81	87	94	99	104	"		
Hanches (23cm au-dessous de la taille)													
	85	88	92	97	102	107	112	117	122	127	cm		
Dos du cou à la taille	40	40.5	41.5	42	42.5	43	44	44.5	45	46	"		
Robe A	150cm* - 1.5m												
Contraste (Corsage)													
115cm*	0.6	0.6	0.6	0.7	0.7	0.7	0.7	0.7	0.8	0.8	m		
150cm*	0.6	0.6	0.6	0.6	0.6	0.6	0.6	0.6	0.6	0.6	"		
A,B Doublure													
115cm*	0.8	0.8	0.8	0.8	0.8	0.8	0.8	0.8	0.8	0.8	m		
150cm*	0.6	0.6	0.6	0.6	0.6	0.6	0.7	0.7	0.7	0.7	"		
Robe B	150cm*												
MESURES DES VÊTEMENTS FINI (Motif et aisance de port compris)													
A,B Poitrine	84	86	90	95	100	105	110	116	121	126	cm		
Largeur à l'ourlet													
Robe A	188	191	194	199	204	210	215	220	225	230	cm		
Robe B	213	216	220	225	230	235	240	245	250	255	"		
Longueur finie – dos, votre nuque à l'ourlet													
Robe A	86	86	87	88	88	89	90	90	91	91	cm		
Robe B	131	132	133	133	134	135	135	136	137	137	"		

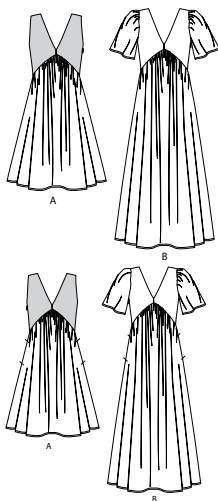
*avec sens **sans sens

*avec sens **sans sens

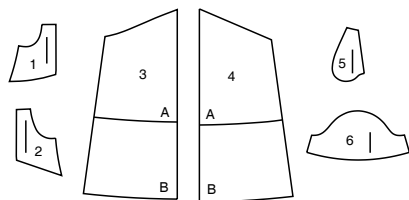




@missalishagrace

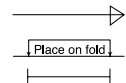


6 PATTERN PIECES



- 1 Bodice Front-A,B
2 Bodice Back-A,B
3 Skirt Front-A,B
4 Skirt Back-A,B
5 Pocket-A,B
6 Sleeve-B

PATTERN MARKINGS

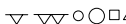


GRAINLINE: Place on straight grain of fabric, parallel to selvage or fold.

FOLDLINE: Place line on fold of fabric.

BUTTONHOLE MARKING: Indicates exact length and placement of buttonholes.

BUTTON MARKING: Indicates button placement.



NOTCHES AND SYMBOLS: For matching seams and construction details.



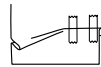
Indicates the Bustline, Waistline, Hip and/or Biceps. Measurements refer to circumference of Finished Garment (Body Measurement + Wearing Ease + Design Ease). Adjust pattern if necessary. The measurement excludes pleats, tucks, darts and seam allowances.

SEAM ALLOWANCE: 5/8" (1.5cm) included unless otherwise indicated, but not printed on tissue.

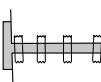
ADJUST IF NECESSARY

Lengthen or Shorten at adjustment lines (==) or where indicated on pattern. If substantial length is added, you may need to purchase additional fabric.

TO SHORTEN: Crease along adjustment line. Make a fold half the amount needed. Tape in place.



TO LENGTHEN: Slash between adjustment lines. Spread amount as needed, keeping edges parallel. Tape over paper.



When Alteration lines are not on tissue, lengthen or shorten at lower edge.

CUTTING AND MARKING

SHRINK FABRIC if not labeled pre-shrunk. Press.

CIRCLE LAYOUT for View, Size, Fabric Width.

Use **WITH NAP** layout for fabrics with one-way designs, nap, pile or surface shading. Because most knits have surface shading, a with nap layout is used.

For **DOUBLE THICKNESS (WITH FOLD)** - fold fabric with right sides together.

***DOUBLE THICKNESS (WITHOUT FOLD)** - For fabrics with nap, fold fabric crosswise, right sides together. Mark as shown. Cut along crosswise fold of fabric (A). Turn upper layer 180° so arrows go in same direction and place over lower layer, right sides together (B).

For **SINGLE THICKNESS** - place fabric right side up. (For Fur Pile fabrics, place pile side down.)

★ Cut other pieces first, allowing enough fabric to cut this piece. Open fabric. For "Cut 1" pieces, cut piece once on single layer of fabric with piece face up on right side of fabric.

Pattern may have cutting lines for several sizes. Select the proper cutting line or pattern pieces for your size.

Before **CUTTING** place all pieces on fabric according to layout. Pin. (**Layouts show approximate position of pattern pieces; position may vary according to your pattern size.**) Cut **ACCURATELY**, cutting notches outward.

Before removing pattern, **TRANSFER MARKINGS** and lines of construction to Wrong Side of fabric, using the Pin and Chalk Pencil method or Tracing Paper and Dressmaker Wheel. Markings needed on right side of fabric should be thread traced.

NOTE: Broken-line boxes (at b! cl) in layouts represent pieces cut by measurements provided.

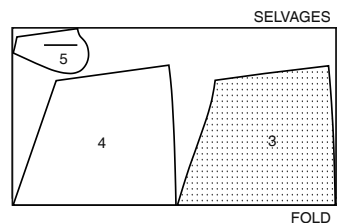
CUTTING LAYOUTS

RIGHT SIDE OF PATTERN	WRONG SIDE OF PATTERN	RIGHT SIDE OF FABRIC	WRONG SIDE OF FABRIC

DRESS A

USE PIECES 3 4 5

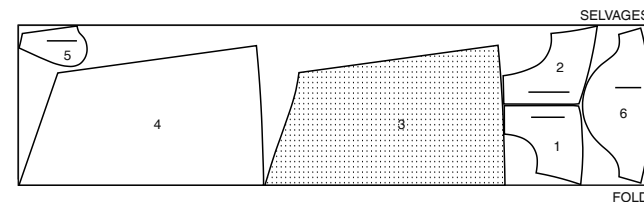
60" (150CM)
WITH NAP
ALL SIZES



DRESS B

USE PIECES 1 2 3 4 5 6

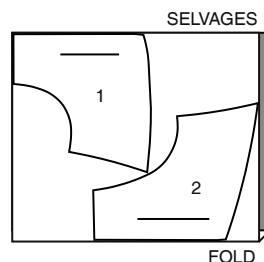
60" (150CM)
WITH NAP
ALL SIZES



CONTRAST BODICE

USE PIECES 1 2

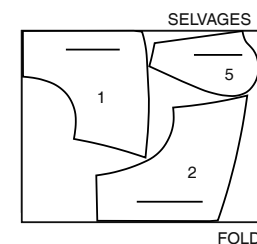
45" (115CM)
WITH NAP
ALL SIZES



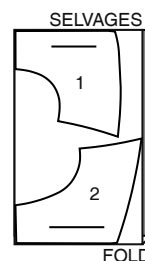
LINING: A,B

USE PIECES 1 2 5

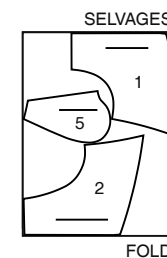
45" (115CM)
WITH NAP
ALL SIZES



60" (150CM)
WITH NAP
ALL SIZES

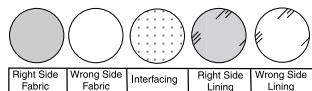


60" (150CM)
WITH NAP
ALL SIZES



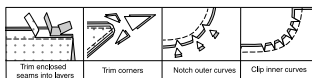
SEWING INFORMATION

FABRIC KEY



SEAM ALLOWANCES

Use 5/8" (1.5cm) seam allowances unless otherwise indicated.



PIN AND FIT

Pin or baste seams, **RIGHT SIDE TOGETHER**, matching notches. Fit garment before stitching major seams.

PRESS

Press seam allowances flat; then open unless otherwise stated. Clip where necessary so they lie flat.

GLOSSARY

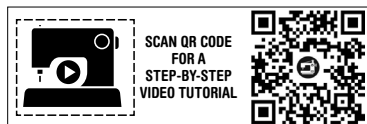
Sewing methods in **BOLD TYPE** are defined below.

GATHER – Stitch along seamline and again 1/4" (6mm) away in seam allowance, using long machine stitches. Pull thread ends when adjusting to fit.

NARROW HEM – Turn up hem; press, easing in fullness if necessary. Open out hem. Turn in again so raw edge is along crease; press. Turn in along crease; stitch.

SLIPSTITCH – Slide needle through a folded edge, then pick up a thread of fabric underneath.

UNDERSTITCH – Open out facing or underside of garment; stitch to seam allowance close to seam.

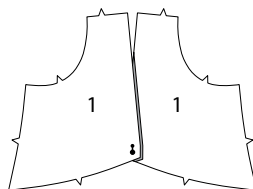


@missalishagrace

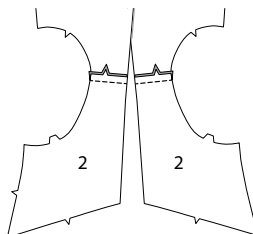
DRESS A, B

BODICE FRONT AND BACK

1. With **RIGHT** sides together, stitch **BODICE FRONT** (1) sections at center front seam between large and small dots.

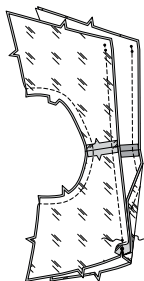
**2. VIEW A**

Stitch bodice front to **BODICE BACK** (2) at shoulders.

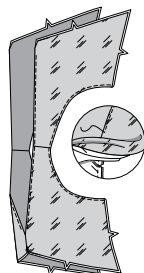


3. Stitch bodice lining in same manner as bodice.

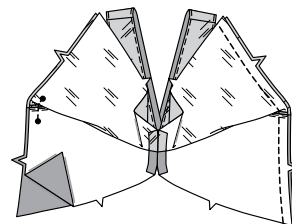
With **RIGHT** sides together, pin bodice lining to neck and armhole edges, matching centers, shoulder seams, small and large dots. Starting and ending stitching at small dot in back, stitch neck edge, breaking and reinforcing stitching at small dot in front. Back-stitch at small dots to reinforce seam. Stitch armhole edges, keeping side seams free.



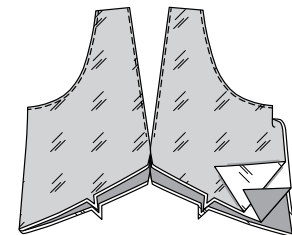
4. Turn bodice sections **RIGHT** side out by pulling through shoulders; press. **UNDERSTITCH** bodice lining as far as possible.



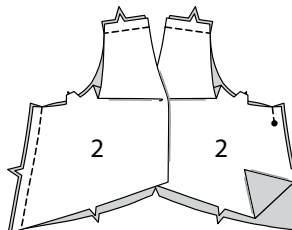
5. Open out bodice lining. With **RIGHT** sides together, pin bodice front to bodice back and lining front to lining back at **RIGHT** side seam, matching armhole seams. Stitch, stitching left side seam ending at large dot. Pin center back seam of bodice and lining, matching dots. Stitch, breaking and reinforcing stitching at small dots.



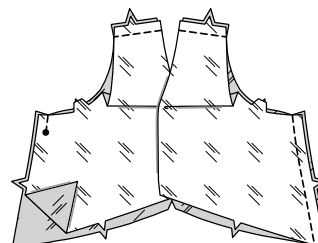
6. Turn bodice **RIGHT** side out. Press.

**7. VIEW B**

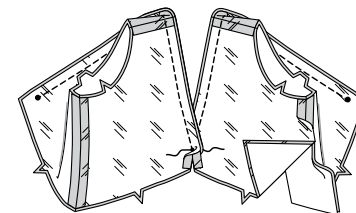
Stitch bodice front to **BODICE BACK** (2) at shoulders and **RIGHT** side seam. Stitch left side seam above large dot.



8. Prepare bodice **LINING** sections in same manner as bodice.

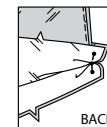
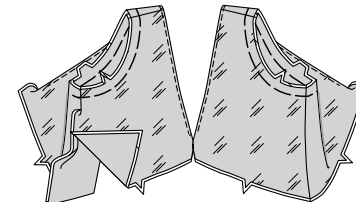


9. With right sides together, pin lining to bodice. Stitch neck edge ending at upper small dot in back, breaking and reinforcing stitching at small dot in front. Trim seam.

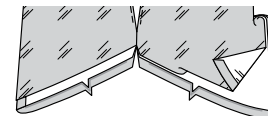


10. UNDERSTITCH lining as far as possible. Turn lining to **INSIDE**; press.

Pin center back seam of bodice and lining together, matching small dots. Stitch, breaking and reinforcing stitching at small dots. Baste armhole edges together.

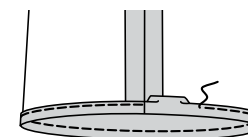
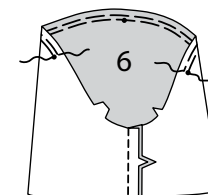


11. VIEW A, B- Turn in 5/8" (1.5cm) seam allowance on lower edge of bodice lining; press.



SLEEVE B

12. GATHER upper edge of **SLEEVE** (6) between notches. Stitch sleeve seam. **NARROW HEM** lower edge of sleeve.

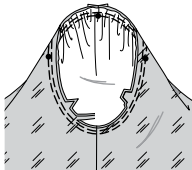


13. Turn sleeve RIGHT side out.

Hold garment WRONG side out with armhole toward you.

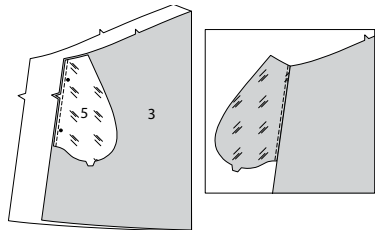
With RIGHT sides together, pin sleeve to armhole edge with center small dot at shoulder seam, matching underarm seams, notches and remaining small dots. Pull up gathering stitches to fit.

To distribute fullness evenly, slide fabric along bobbin threads until there are no puckers or tucks on the seam line. Baste. Stitch. Stitch again 1/8" (3mm) from first stitching. Trim seam below notches close to stitching. Press only the seam allowance, shrinking out fullness.

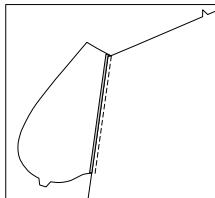
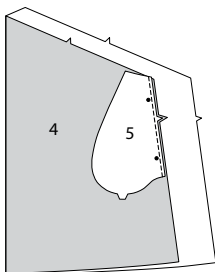
**SKIRT AND POCKETS****14. FOR RIGHT POCKET-**

Stitch one POCKET (5) section (lining) to SKIRT FRONT (3) at RIGHT side in a 1/4"(6mm) seam. Press seams toward pockets.

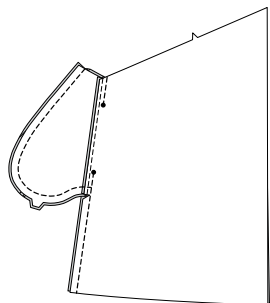
UNDERSTITCH pocket lining.



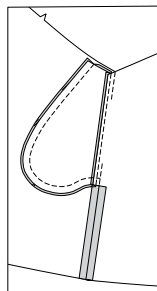
15. Stitch one POCKET section (fabric) to SKIRT BACK (4) at RIGHT side in a 1/4"(6mm) seam. Press seams toward pockets.



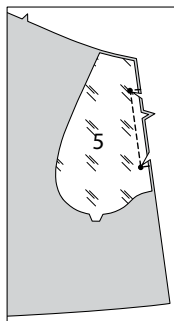
16. Stitch front and back together at RIGHT side, leaving opening between large dots. Stitch pocket edges together to side seams. Clip back seam allowances below pockets.



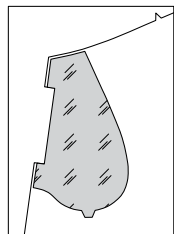
17. Turn pockets toward front along seamlines; press.

**18. FOR LEFT POCKET-**

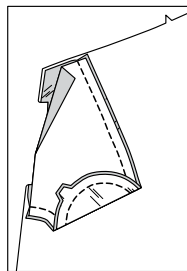
With RIGHT sides together, pin pocket (lining) to LEFT skirt front, matching large dots and having raw edges even. Stitch seam between large dots, pivoting at large dot and continuing across seam allowance to raw edge, as shown. Clip seam to stitching at large dots.



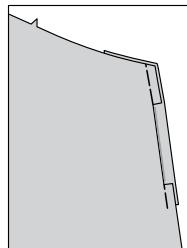
19. Turn pocket to INSIDE, turning out seam allowances above and below clips; press.



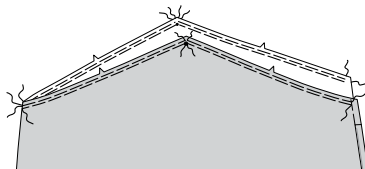
20. With RIGHT sides together, pin remaining pocket (fabric) section to front and pocket, matching large dots and having raw edges even. Stitch pockets together starting at upper edge.



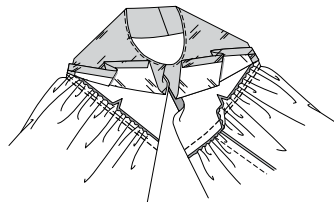
21. On OUTSIDE, baste raw edges of front and pocket together.



22. GATHER upper edge of skirt breaking stitching at side seams and dots.

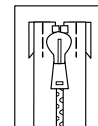


23. Open out bodice lining. With RIGHT sides together pin skirt to lower edge of bodice having raw edges even, matching symbols. Adjust gathers to fit. Baste. Stitch, keeping lining free. Press seam up. Trim seam.

**ZIPPER**

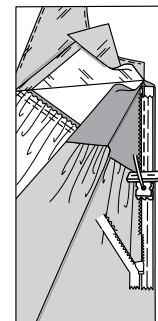
NOTE: *Stitch the invisible zipper using an invisible zipper foot*

24. Turn under upper ends of zipper tape. Baste.

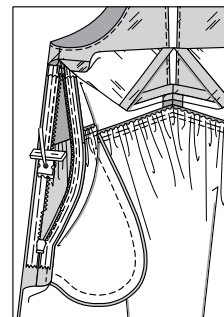


25. Open the zipper and press the tape flat on the WRONG side, unrolling the coils. Do not press the coils. (Use a low iron setting.)

On OUTSIDE, pin LEFT side of the zipper face down on the LEFT FRONT side of the zipper opening. Have the coil along the seam line, the tape within the seam allowance and the top stop at upper large dot, as shown. Hand-baste along center of the tape. Position zipper foot at the top of the zipper with LEFT groove of the foot over coil. Stitch along tape to slider, being careful not to catch in opening edge of pocket.



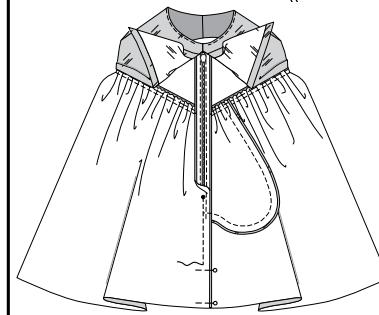
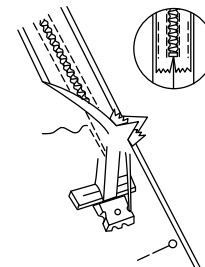
26. Pin remaining half of zipper to LEFT BACK side of opening in same manner. Make sure that the upper and lower edges of dress are even and that midriff seams match. Hand-baste along center of tape. Position zipper foot at top of zipper tape with RIGHT groove over coil. Stitch along tape to the slider.



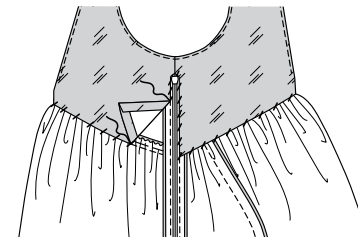
27. Close zipper and check that it is invisible from the OUTSIDE. Pull the free ends of the zipper tape away from the seam allowance. Pin LEFT side seam together below zipper. Position zipper foot all the way to the LEFT so the needle goes down outside the foot. Start stitching seam 1/4" (6mm) above lowest stitch and slightly to the LEFT. Stitch seam for about 3" (7.5cm).

Stitch remainder of seam using your regular presser foot. Back-stitch at dot to reinforce seam.

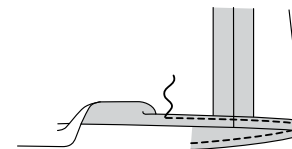
If you prefer, open out each seam allowance at end of zipper and stitch tape to seam allowance.

**FINISHING**

28. Turn bodice lining down, turning in side edges to clear zipper teeth; press. **SLIPSTITCH** lining to zipper tape and pressed edge over seam.



29. NARROW HEM lower edge of dress, easing in fullness if necessary.





Congrats!

You've completed your sewing adventure

SHARE YOUR LOOK



Post your pattern and tag us using [#knowMepatterns](#)
[@simplicity_creative_group](#)
[@simplicitymccallsuk](#)
[@simplicitymccallsaustralia](#)
for a chance to be featured on our social media.

Look for more PDF patterns at [simplicity.com](#) or for customers outside the U.S. and Canada visit [sewdirect.com](#) and [sewdirect.com.au](#)

Have a question or need help with your sewing project contact us:
[Simplicity.com](#) [Sewdirect.com](#) [Sewdirect.com.au](#)



McCall's ©2025 a division of IG Design Group Americas Inc. • Atlanta, GA 30342 USA [www.thedesigngroup.com](#) • All Rights Reserved. [www.mccall.com](#) • Made in the U.S.A. Fabriqué aux États-Unis.
To be used for individual private home use only and not for commercial or manufacturing purposes. • A usage privé seulement et non à des fins commerciales ou de production en série. • Para uso privado solamente, no se puede utilizar con propósitos de comercialización o de producción en serie.