



NORRIS DANTA FORD

**knowME**  
BY mimi g

ME2118




Scan QR code for a Sew-Along video tutorial.



@norrisdantaford

 Designed and printed in USA

Average

**MEN'S JACKET**

**Suggested Fabrics:** Cotton Blends, Gabardine, Light weight Wools, Linen Blends, Stretch Wovens, Tweed, Twill. **Lining:** Cotton Blends, Polyester Blends. **Interfacing:** Lightweight Fusible.

**Notions:** Three ¾" (2cm) buttons, pair of shoulder pads, three pkgs. of ¼" (6mm) double fold bias tape.

Sizes	34	36	38	40	42	44	46	48	50	52
-------	----	----	----	----	----	----	----	----	----	----

**BODY MEASUREMENTS: Select pattern size based on body measurements**

<b>Chest</b>	34	36	38	40	42	44	46	48	50	52	Ins.
<b>Waist</b>	28	30	32	34	36	39	42	44	46	48	"
<b>Hip</b>	35	37	39	41	43	45	47	49	51	53	"

<b>Jacket</b>	45**	3½	3¾	3¾	3¾	3¾	4	4	4¾	4¾	Yds.
	60**	2¾	2¾	2¾	2¾	2¾	3	3	3¾	3¾	"
<b>Lining</b>	45***	1½	1½	1½	1½	1¾	1¾	1¾	1¾	1¾	"
<b>Interfacing</b>	20"	2¼	2¼	2¼	2¼	2¾	2¾	2¾	2¾	2¾	"

**FINISHED GARMENT MEASUREMENTS (Includes Design and Wearing Ease)**

<b>Chest</b>	42	44	46	48	50	52	54	56	58	60	Ins.
<b>Waist</b>	42	44	46	48	50	52	54	56	58	60	"
<b>Width, lower edge</b>											
<b>Jacket</b>	43½	45½	47½	49½	51½	53½	55½	57½	59½	61½	Ins.
<b>Finished back length from base of neck</b>											
<b>Jacket</b>	28¾	28½	28¾	29	29¼	29¾	30	30¼	30¾	30¾	Ins.

\*with nap \*\*without nap

Moins Facile

**VESTE POUR HOMMES**

**Tissus Conseillés:** Cotonnades, Gabardine, Laines légers, Lin mélangés, Tissus tissés extensibles, Tweed, Twill. **Doubleure:** Cotonnades, Mélanges de polyester. **Entoilage:** Thermocollant léger.

**Mercerie:** 3 boutons de 2cm, paire d'épaulettes, 3 paquets de ruban de biais double de 6mm.

Tailles	34	36	38	40	42	44	46	48	50	52
---------	----	----	----	----	----	----	----	----	----	----

**MESURES DU CORPS: Choisissez la taille du patron basée sur les mesures du corps**

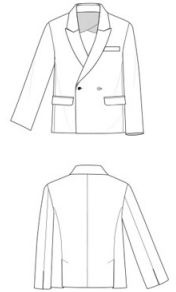
<b>Poitrine</b>	87	92	97	102	107	112	117	122	127	132	cm
<b>Taille</b>	71	76	82	87	92	99	107	112	117	122	"
<b>Hanches (23cm au-dessous de la taille)</b>	89	94	99	104	109	115	119	124	128	135	cm

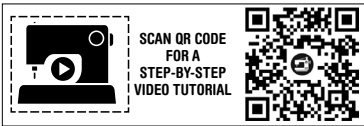
<b>Veste</b>	115cm*	3.2	3.2	3.3	3.3	3.3	3.3	3.7	3.7	3.8	3.8	m
	150cm*	2.5	2.5	2.5	2.5	2.5	2.6	2.7	2.7	2.9	2.9	"
<b>Doubleure</b>	115cm**	1.5	1.5	1.5	1.5	1.5	1.6	1.6	1.7	1.7	"	
<b>Entoilage</b>	51cm	2.1	2.1	2.1	2.1	2.1	2.2	2.2	2.2	2.3	"	

**MESURES DES VÊTEMENTS FINI (Motif et aisance de port compris)**

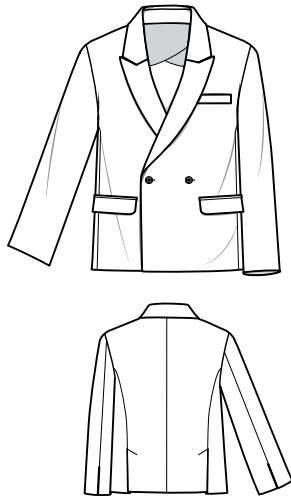
<b>Poitrine</b>	107	112	117	122	127	132	137	142	147	152	cm
<b>Taille</b>	107	112	117	122	127	132	137	142	147	152	"
<b>Largeur à l'ourlet</b>											
<b>Veste</b>	110	116	121	126	131	136	141	146	151	156	cm
<b>Longueur finie – dos, votre nuque à l'ourlet</b>											
<b>Veste</b>	72	72	73	74	74	75	76	76	77	77	cm

\*avec sens \*\*sans sens

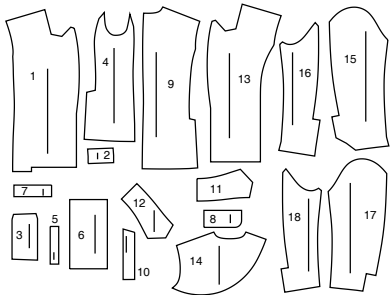




@norrisdantaford



18 PATTERN PIECES



- 1 Front
- 2 Upper Welt
- 3 Upper Pocket
- 4 Side Front and Back
- 5 Lower Welt
- 6 Lower Pocket
- 7 Lower Pocket Facing
- 8 Flap
- 9 Back
- 10 Side Back Facing
- 11 Upper Collar
- 12 Undercollar
- 13 Front Facing
- 14 Back Facing
- 15 Upper Sleeve
- 16 Under Sleeve
- 17 Upper Sleeve Lining
- 18 Under Sleeve Lining

### PATTERN MARKINGS

**GRAINLINE:** Place on straight grain of fabric, parallel to selvage or fold.

**FOLDLINE:** Place line on fold of fabric.

**BUTTONHOLE MARKING:** Indicates exact length and placement of buttonholes.

**BUTTON MARKING:** Indicates button placement.

**NOTCHES AND SYMBOLS:** For matching seams and construction details.

Indicates the Bustline, Waistline, Hip and/or Biceps. Measurements refer to circumference of Finished Garment (Body Measurement + Wearing Ease + Design Ease). Adjust pattern if necessary. The measurement excludes pleats, tucks, darts and seam allowances.

**SEAM ALLOWANCE:** 5/8" (1.5cm) included unless otherwise indicated, but not printed on tissue.

### ADJUST IF NECESSARY

Lengthen or Shorten at adjustment lines (==) or where indicated on pattern. If substantial length is added, you may need to purchase additional fabric.

**TO SHORTEN:** Crease along adjustment line. Make a fold half the amount needed. Tape in place.

**TO LENGTHEN:** Slash between adjustment lines. Spread amount as needed, keeping edges parallel. Tape over paper.

When Alteration lines are not on tissue, lengthen or shorten at lower edge.

### CUTTING AND MARKING

**SHRINK FABRIC** if not labeled pre-shrunk. Press.

**CIRCLE LAYOUT** for View, Size, Fabric Width.

Use **WITH NAP** layout for fabrics with one-way designs, nap, pile or surface shading. Because most knits have surface shading, a with nap layout is used.

For **DOUBLE THICKNESS (WITH FOLD)** - fold fabric with right sides together.

**\* DOUBLE THICKNESS (WITHOUT FOLD)** - For fabrics with nap, fold fabric crosswise, right sides together. Mark as shown. Cut along crosswise fold of fabric (A). Turn upper layer 180° so arrows go in same direction and place over lower layer, right sides together (B).

For **SINGLE THICKNESS** - place fabric right side up. (For Fur Flee fabrics, place pile side down.)

★ Cut other pieces first, allowing enough fabric to cut this piece. Open fabric. For "Cut 1" pieces, cut piece once on single layer of fabric with piece face up on right side of fabric.

Pattern may have cutting lines for several sizes. Select the proper cutting line or pattern pieces for your size.

Before **CUTTING** place all pieces on fabric according to layout. Pin. (Layouts show approximate position of pattern pieces; position may vary according to your pattern size.) Cut **ACCURATELY**, cutting notches outward.

Before removing pattern, **TRANSFER MARKINGS** and lines of construction to Wrong Side of fabric, using the Pin and Chalk Pencil method or Tracing Paper and Dressmaker Wheel. Markings needed on right side of fabric should be thread traced.

**NOTE:** Broken-line boxes (a1 b1 c1) in layouts represent pieces cut by measurements provided.

## CUTTING LAYOUTS

### JACKET

USE PIECES: 1 2 4 5 7 8 9 10 11 12 13 15 16

45" (115 CM)  
 WITH NAP  
 SIZES 34-36-38-40-42-44

45" (115 CM)  
 WITH NAP  
 SIZES 46-48-50-52

### INTERFACING

USE PIECES: 2 5 8 10 11 12 13

20" (51 CM)  
 WITHOUT NAP  
 ALL SIZES

60" (150CM)  
 WITH NAP  
 SIZES 34-36-38-40-42-44

60" (150CM)  
 WITH NAP  
 SIZES 46-48-50-52

### LINING

USE PIECES: 3 6 14 17 18

45" (115 CM)  
 WITHOUT NAP  
 ALL SIZES

### SEWING INFORMATION

#### FABRIC KEY

#### SEAM ALLOWANCES

Use 5/8" (1.5cm) seam allowances unless otherwise indicated.

#### PIN AND FIT

Pin or baste seams, **RIGHT SIDE TOGETHER**, matching notches. Fit garment before stitching major seams.

#### PRESS

Press seam allowances flat; then open unless otherwise stated. Clip where necessary so they lie flat.

### GLOSSARY

Sewing terms appearing in **BOLD TYPE** in Sewing Instructions are explained below.

**EASESTITCH** - Stitch along seamline, using long machine stitches. Pull thread ends when adjusting to fit.

**NOTE:** For sleeve caps, make a second row of long machine stitches 1/4" (6mm) away in seam allowance, for more control.

**EDGESEW** - Stitch close to finished edge or seam.

RIGHT SIDE OF PATTERN	WRONG SIDE OF PATTERN	RIGHT SIDE OF FABRIC	WRONG SIDE OF FABRIC
-----------------------	-----------------------	----------------------	----------------------

**ENCASE:** To encase, slip raw edge of seam allowance between the folds of double fold bias tape placing the raw edge against the center crease and the wider folded edge of the tape on the **WRONG** side, being sure to catch in the folded edge on the **WRONG** side.

**NARROW HEM** - Turn in hem; press, easing in fullness if necessary. Open out hem. Turn in again so raw edge is along crease; press. Turn in along crease; stitch.

**REINFORCE** - Stitch along seamline where indicated in sewing instructions, using small machine stitches.

**SLIPSTITCH** - Slide needle through a folded edge, then pick up a thread of undermeath fabric.

**STAYSTITCH** - Stitch 1/8" (3mm) from seamline in seam allowance (usually 1/2" (13mm) from raw edge).

**UNDERSTITCH** - Open out facing or underside of garment; stitch to seam allowance close to seam.

@norrisdantaford

**PATTERN PIECES WILL BE IDENTIFIED BY NUMBERS THE FIRST TIME THEY ARE USED.**

**STITCH SEAMS WITH RIGHT SIDES TOGETHER UNLESS OTHERWISE STATED.**

## SEWING DIRECTIONS

### JACKET

**NOTE:** Double-fold bias tape will not be shown in the illustrations following application.

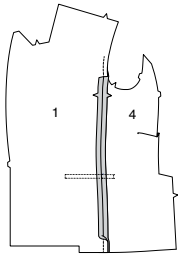
### INTERFACING

- Trim corners from INTERFACING, as shown. Fuse INTERFACING to wrong side of each matching FABRIC section, following manufacturer's instructions.

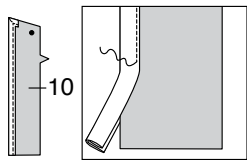
© 2025 KnowMe® an IG Design Group Americas, Inc. brand. All Rights Reserved. Printed in U.S.A.

**FRONT**

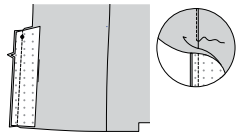
**2.** With RIGHT sides together, pin FRONT (1) to SIDE FRONT AND BACK (4), matching notches and stitching lines. Stitch. Clip front at underarm seamline. Press seam open below clip.



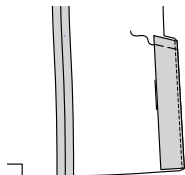
**3.** ENCASE long unnotched and upper edges of SIDE BACK FACING (10), folding in fullness at corner and stopping 1"(2.5cm) from small dot, as shown.



**4.** Pin side back facing to side front and back, RIGHT sides together, matching notches and small dots. Stitch. UNDERSTITCH facing.

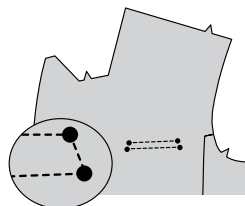


**5.** Turn facing to INSIDE. Baste upper edges.



**UPPER POCKET**

**6.** REINFORCE left front along corners of upper stitching lines, pivoting at small dots, as shown.



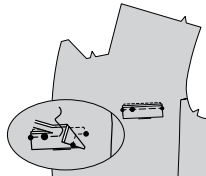
**7.** With RIGHT sides together, fold UPPER WELT (2) along foldline. Stitch ends. Trim.



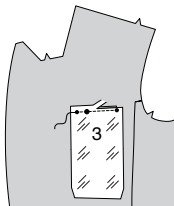
**8.** Turn RIGHT side out. Press. Baste raw edges together.



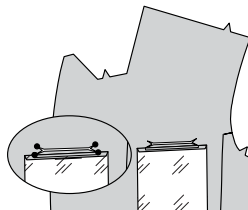
**9.** Pin welt to OUTSIDE of left front, matching large and small dots, placing seamline on welt along lower stitching line on jacket. Baste along seamline between small dots. Trim seam allowance on welt to a scant 1/4"(6mm), being careful not to cut jacket.



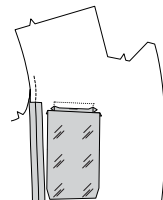
**10.** Pin lower edge of UPPER POCKET (3) to left front, over welt, matching large and small dots, placing seamline on upper pocket along lower stitching line on jacket. Stitch between small dots. Trim seam allowance on pocket to a scant 1/4"(6mm), being careful not to cut jacket or welt.



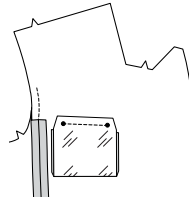
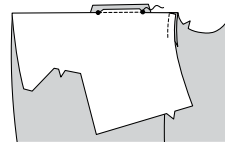
**11.** Slash front along line between stitching lines, clipping diagonally to small circles, being careful not to cut welt or pocket.



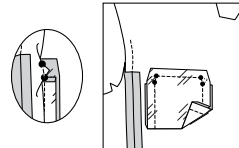
**12.** Turn pocket and triangular ends to INSIDE, turning welt up. Press.



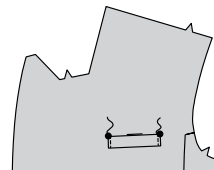
**13.** Fold upper edge of jacket to OUTSIDE along upper stitching line. Pin upper edge of upper pocket to extended 1/4"(6mm) seam allowance, matching small dots, placing seamline on upper pocket along upper stitching line, keeping welt free. Stitch between small dots. Press seam toward jacket.



**14.** Stitch side edges of upper pocket together, catching triangular ends, keeping front free.

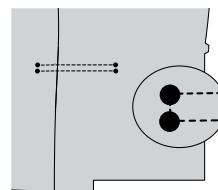


**15.** On OUTSIDE, Pin welt in place matching large dots. EDGESTITCH ends of welt.

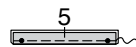


**LOWER POCKET**

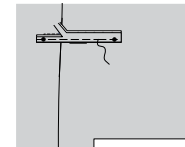
**16.** REINFORCE fronts along corners of lower stitching lines, pivoting at small dots, as shown.



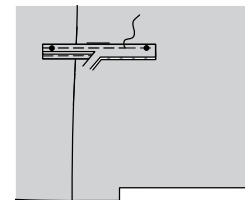
**17.** With WRONG sides together, fold each LOWER WELT (5) along foldline. Baste raw edges together.



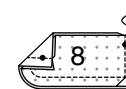
**18.** For each front, pin one lower welt section to OUTSIDE of front, placing seamline on welt along lower stitching line on jacket with raw edge pointing up, matching small dots. Baste along seamline between small dots. Trim seam allowance on welt to a scant 1/4"(6mm), being careful not to cut jacket.



**19.** Pin remaining lower welts to fronts along upper stitching lines in same manner with raw edges pointing down. Stitch along seamline between small dots. Trim seam allowance on welts to a scant 1/4"(6mm), being careful not to cut jacket.



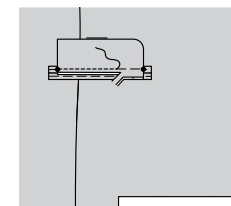
**20.** For each flap, pin an interfaced FLAP (8) section to one without interfacing, RIGHT sides together, matching small dots. Stitch, leaving upper edge open. Trim.



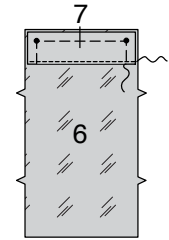
**21.** Turn flap RIGHT side out. Press. Baste raw edges together.



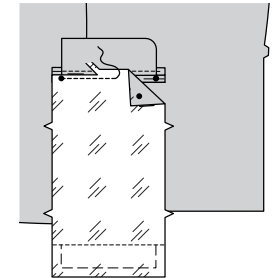
**22.** Pin flap to front, over welt, RIGHT sides together, matching small dots, placing seamline on flap along upper stitching line and raw edges pointing down. Stitch along seamline between small dots. Trim seam allowance of flap to a scant 1/4"(6mm), being careful not to cut welt or jacket.



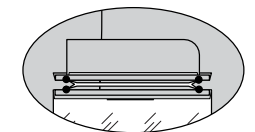
**23.** Pin WRONG side of LOWER POCKET FACING (7) to RIGHT side of LOWER POCKET (6), matching small dots, having upper edges even and lower edge of facing along placement line. Baste sides and upper edges. Stitch close to lower edge of facing using a straight or zigzag stitch.



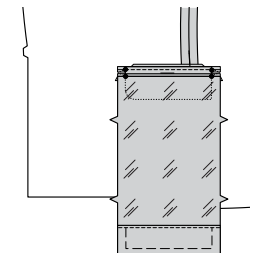
**24.** Pin lower edge of lower pocket to front, over lower welt, RIGHT sides together, placing seamline on pocket along lower stitching line on jacket matching small dots. Stitch along seamline between small dots. Trim seam allowance on pocket to a scant 1/4"(6mm), being careful not to cut flap, welt, or jacket.



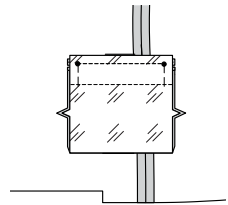
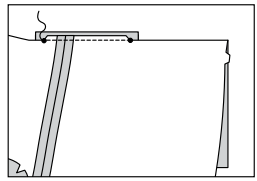
**25.** Slash front along line between stitching, clipping diagonally to small dots, being careful not to cut welts or flaps.



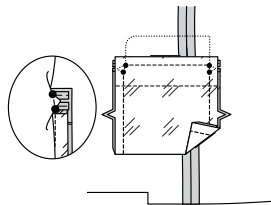
**26.** Turn pocket, welt ends, and triangular ends to INSIDE, turning flap down.



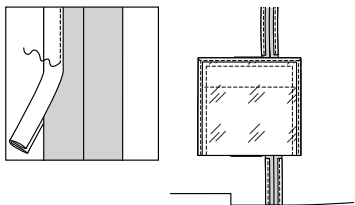
27. Fold upper edge of jacket to OUTSIDE along upper stitching line. Pin upper edge of pocket to extended 1/4"(6mm) seam allowance, matching small dots, placing seamline on pocket along upper stitching line. Stitch along seamline along previous stitching through all layers. Press seam toward jacket.



28. Stitch side edges of pocket together, catching ends of welts and triangular ends, keeping front and flap free.

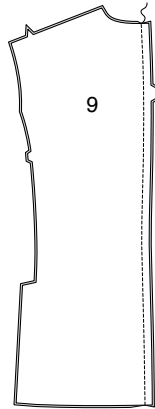


29. ENCASE seam allowances of side front seam above and below pocket, as far as possible. ENCASE seam allowances of sides and upper edges of pocket.



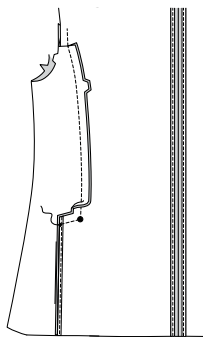
BACK

30. Stitch center back seam in BACK (9).

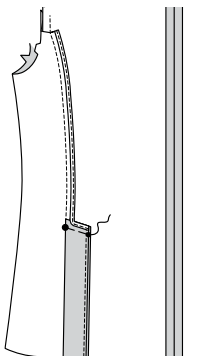


31. ENCASE center back seam allowances and long edges of back extensions.

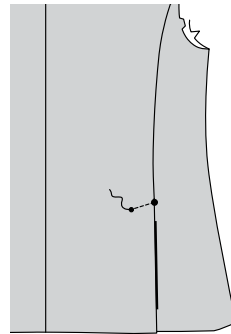
Pin side front and back to back, RIGHT sides together, matching notches and large dots. Stitch pivoting at large dot and across upper edge of extensions to small dot. Clip seam allowances at underarm seamline. Press seam allowances toward back below clip.



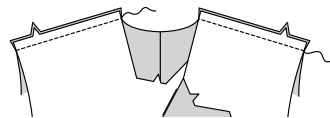
32. ENCASE side back seam allowances and upper edge of extensions together. Turn extensions towards back, folding back extension along foldline. Press. Pin upper edge of extensions to back matching large and small dots placing seamline along stitching line. Baste.



33. On OUTSIDE, stitch between large and small dots, along stitching line through all thicknesses.

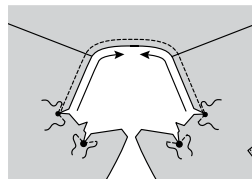


34. Stitch front to back at shoulders.

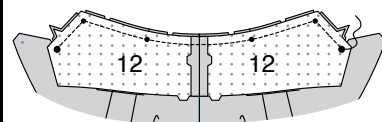


COLLAR

35. REINFORCE neck edge of front through small and large dots at inner corners. Clip to small and large dots. STAYSTITCH neck edge of jacket between inner small dots in direction of arrows.

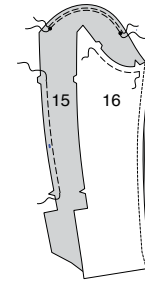


36. Stitch center back seam in UNDER COLLAR (12). Pin under collar to neck edge, matching small and large dots, clipping neck edge of jacket where necessary. Baste. Stitch between large dots, as shown. Trim seam; press open.

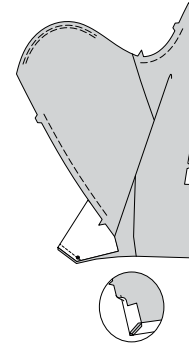


SLEEVE

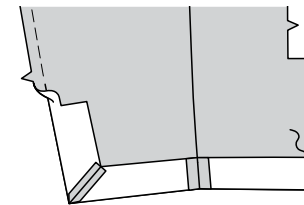
37. EASESTITCH back edge of UPPER SLEEVE (15) between notches. EASESTITCH cap of upper sleeve between outer small dots. Pin upper sleeve to UNDER SLEEVE (16) at front edge matching notches. Stitch.



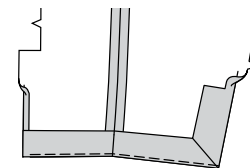
38. To miter sleeve, on OUTSIDE, fold lower edge of upper sleeve along foldline and hemline matching small dots as shown. Stitch in a 3/8"(1cm) seam. Press seam open with point of iron.



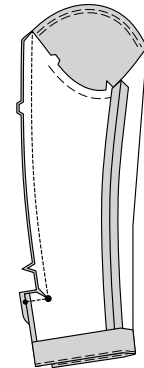
39. Turn lower edge of under sleeve to OUTSIDE along hemline. Stitch across hem in a 3/8"(1cm) seam as shown.



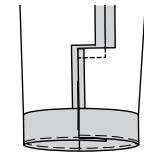
40. Turn miter and self-facing to INSIDE along foldline, turning up hem and remainder of seam allowance on under sleeve extension. Baste close to lower fold.



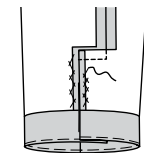
41. Open out self-facing on upper sleeve. Pin remaining sleeve seam, adjusting ease; baste. Stitch, pivoting at large dot. Clip under sleeve seam allowance above extension.



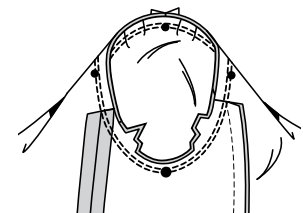
42. Turn self-facing down. Sew hem in place. To press, hold iron over hem. Steam, never resting iron on fabric.



43. On INSIDE, CATCHSTITCH extension and self-facing in place.

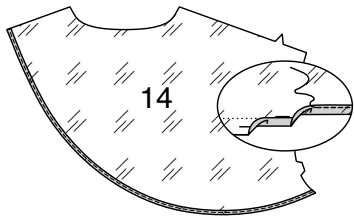


44. With RIGHT sides together, pin sleeve into armhole, placing center small dot at shoulder seam, matching notches and large dots and remaining small dots. Adjust ease. Stitch. Stitch again 1/4"(6mm) away in seam allowances. Trim close to second stitching. Press seam allowances flat. Turn seam allowances toward sleeve.

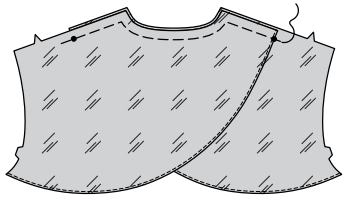


**FACING AND UPPER COLLAR**

45. Make a 3/8"(1cm) **NARROW HEM** on lower edge of **BACK FACING** (14).

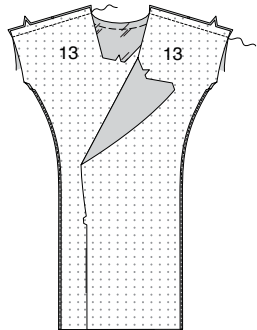


46. With **RIGHT** sides up, lap back facings as shown, matching center backs, with neck and shoulder edges even and finished edge of facing at small dots. Baste neck and shoulder edges together.

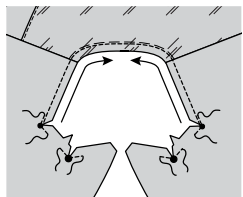


47. Make a 3/8"(1cm) **NARROW HEM** on inner edge of **FRONT FACING** (13). **NOTE:** If desired, finish inner edge of facing by encasing with double fold bias tape instead of a narrow hem.

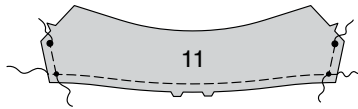
Stitch front facing to back facing at shoulders.



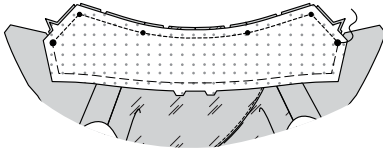
48. **REINFORCE** neck edge of front facing through small and large dots at inner corners. Clip to small and large dots. **STAYSTITCH** neck edge of facing between inner small dots in direction of arrows.



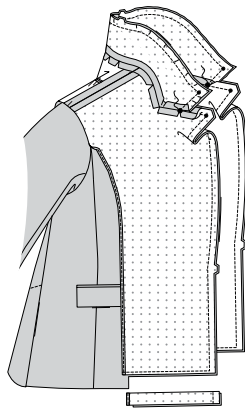
49. **EASESTITCH** double notched edge of **UPPER COLLAR** (11) between small dots. **EASESTITCH** ends of upper collar between small and large dots.



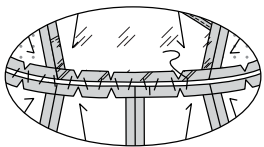
50. Pin upper collar to neck edge of facing matching center backs, single notches, and small and large dots, clipping neck edge of facing where necessary. Baste. Stitch between large dots, as shown. Trim seam; press open.



51. With **RIGHT** sided together, pin upper collar and facing to under collar and jacket along outer edges matching notches, center backs, small and large dots. Baste outer edge of upper and under collar together between large dots, easing upper collar to fit. Stitch between large dots. Stitch lapel and front opening edges below large dots and across lower edge of facing. Trim seam and corners. Trim lower edge of facing 1/4"(6mm) from stitching. Trim jacket to within 5/8"(1.5cm) of inner edge of facing.



52. Turn facing to inside. Press. Open out back facing and loosely sew back neck seam allowances together.

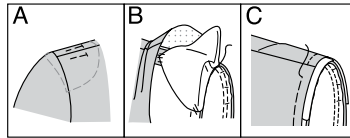


53. Try on jacket for shoulder pad placement.

A. Slip pad beneath facing and pin to jacket, extending outer edge about 5/8"(1.5cm) beyond armhole seam. Adjust to fit as needed.

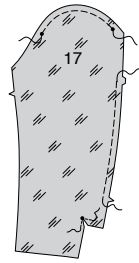
B. Lift facing. Tack pad to shoulder and armhole seam allowances, as shown.

C. Turn down facing. Baste armhole edges.

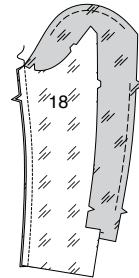


**SLEEVE LINING**

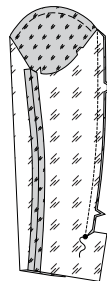
54. **EASESTITCH** top edges of **UPPER SLEEVE LINING** (17) between outer small dots. **EASESTITCH** back edge of upper sleeve between notches. **REINFORCE** inner corner, pivoting at small dot. Clip to small dot.



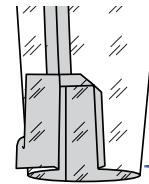
55. Pin under sleeve **LINING** (18) to upper sleeve lining at front edge. Stitch.



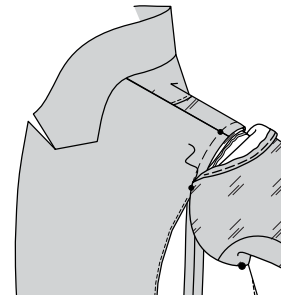
56. Pin remaining sleeve lining seam matching notches and large dot. Adjust ease. Baste. Stitch, ending at large dot. Clip under sleeve lining seam allowance above extension.



57. Turn in 5/8"(1.5cm) seam allowances on upper opening edge of under sleeve lining. Turn in 3/8"(1cm) on side opening edges of upper and under sleeve linings.



58. Slip sleeve lining over sleeve, **WRONG** sides together, placing center small dot at shoulder seam, matching seams, large dots and remaining small dots. Turn under seam allowance on sleeve lining, clipping underarm where necessary. Pin to armhole matching seam lines. Adjust ease. Hand-sew in place.



59. Turn up 5/8"(1.5cm) on lower edge of sleeve lining and place folded edge 5/8"(1.5cm) below raw edge of sleeve hem. **SLIPSTITCH**.

**NOTE:** A pleat will for at lower edge for wearing ease.

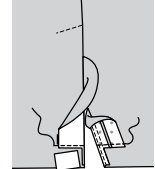


60. **SLIPSTITCH** pressed edge of under sleeve and under sleeve lining extensions together. **SLIPSTITCH** pressed edge of upper sleeve lining in place to self-facing as shown.

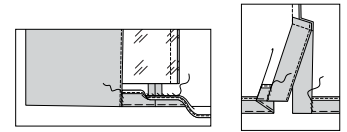


**FINISHING**

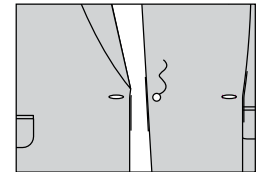
61. Turn lower edges of side back facing and back extensions to **OUTSIDE**. With **RIGHT** sides together, stitch across extensions and facings 1-1/2"(3.8cm) above lower edges. Trim facing and extension, as shown.



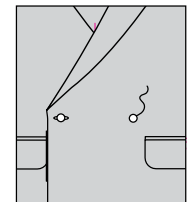
62. Turn facings and extensions to inside, turning up remainder of hem. Press. Baste lower edge close to fold. **ENCASE** raw edge of hem. Sew hem in place. Sew facings and extensions to hem.



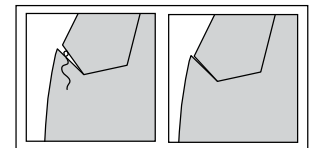
63. Make buttonholes in right and left front at markings. Sew one button to inside of left front facing.



64. On **OUTSIDE**, sew buttons to left and right fronts at markings.



65. Tack seams of collar and lapel as shown, pulling them closely together. Secure and hide thread ends in fabric.





# Congrats!

You've completed your sewing adventure

---

**SHARE  
YOUR** LOOK



Post your pattern and tag us  
[@simplicity\\_creative\\_group](#) and [#knowMepatterns](#)  
for a chance to be featured on our social media.

Look for more PDF patterns at [simplicity.com](https://www.simplicity.com)

Have a question or need help with your sewing project call us at  
1-800-782-0323

