



KEECHI B STYLE
knowME
BY mimi g

ME2116



A



B

Scan QR code for a Sew-Along video tutorial.



@keechibstyle



Designed and printed in USA

Average

MISSES' DRESS AND JUMPSUIT

Suggested Fabrics: Chambray, Crepe, Crepe de Chine, Double Georgette, Linen Blends, Silky Types, Rayon, Viscose. **Lining:** Cotton Blends, Polyester Blends.

Notions: A, B: One 14" (36cm) invisible zipper (adjust to fit), pair of 3/8" - 5/8" (10mm - 15mm) clear elastic shoulder straps (optional).

Sizes	10	12	14	16	18	20	22	24	26
European	36	38	40	42	44	46	48	50	52

BODY MEASUREMENTS: Select pattern size based on body measurements

Bust	32½	34	36	38	40	42	44	46	48	Ins.
Waist	25	26½	28	30	32	34	37	39	41	"
Hip-9" below waist	34½	36	38	40	42	44	46	48	50	"
Back-neck to waist	16	16¼	16½	16¾	17	17¼	17½	17¾	18	"

Lining A, B	45"***	¾	½	½	½	½	½	½	½	Yd.
Dress A	60"*	2¾	2¾	2½	2½	2½	2¾	2¾	2¾	Yds.
Jumpsuit B	60"*	3	3	3¼	3¼	3¼	3¼	3¼	3¼	Yds.

FINISHED GARMENT MEASUREMENTS (Includes Design and Wearing Ease)

A, B Bust	34½	36	38	40	42	44	46	48	50	Ins.
Width, lower edge										
Dress A	88	89½	91½	93½	95½	97½	99½	101½	103½	Ins.
Width, each leg										
Jumpsuit B	36	37	38¼	39½	40¾	42	43¼	44½	45¾	Ins.
Finished back length from base of neck										
Dress A	39	39¼	39½	39¾	40	40¼	40½	40¾	41	Ins.
Jumpsuit B	58	58¼	58½	58¾	59	59¼	59½	59¾	60	"

*with nap **without nap

Moins Facile

ROBE ET COMBINAISON POUR JEUNES FEMMES

Tissus Conseillés: Chambray, Crêpe, Crêpe de Chine, Crêpe georgette double, Lin mélangés, Types soie, Rayonne, Viscose. **doublure:** Cotonnades, Mélanges de polyester.

Merci: A, B: 1 fermeture à glissière invisible de 36cm (adaptez pour ajuster), paire de bretelles élastiques transparentes de 10mm - 15mm (facultatif).

Tailles	10	12	14	16	18	20	22	24	26
Françaises	38	40	42	44	46	48	50	52	54
Européen	36	38	40	42	44	46	48	50	52

MESURES DU CORPS: Choisissez la taille du patron basée sur les mesures du corps

Poitrine	83	87	92	97	102	107	112	117	122	cm
Taille	64	67	71	76	81	87	94	99	104	"
Hanches (23cm au-dessous de la taille)	88	92	97	102	107	112	117	122	127	cm

Dos du cou à la taille 40.5 41.5 42 42.5 43 44 44.5 45 46 "

Doublure A, B	115cm**	0.3	0.3	0.5	0.5	0.5	0.5	0.5	0.5	m
Robe A	150cm*	2.2	2.2	2.2	2.3	2.3	2.5	2.6	2.6	m
Combinaison B	150cm*	2.7	2.7	2.7	2.9	3.2	3.3	3.3	3.3	m

MESURES DES VÊTEMENTS FINI (Motif et aisance de port compris)

A, B Poitrine	88	91	97	102	107	112	117	122	127	cm
Largeur à l'ourlet										
Robe A	224	227	232	237	243	248	253	258	263	cm
Largeur, chaque jambe										
Combinaison B	91	94	97	100	104	107	110	113	116	cm
Longueur finie – dos, votre nuque à l'ourlet										
Robe A	99	100	100	101	102	102	103	104	104	cm
Combinaison B	147	148	149	149	150	150	151	152	152	"

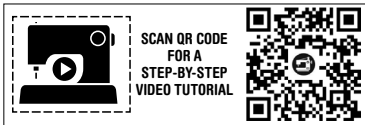
*avec sens **sans sens



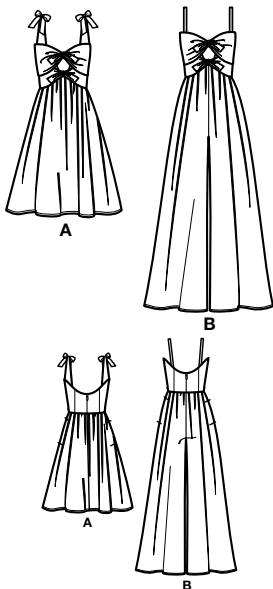
A



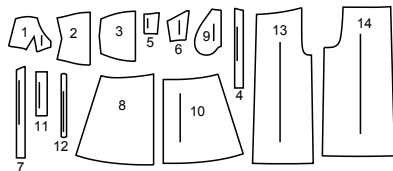
B



@keechiibstyle



14 PATTERN PIECES



- 1 Bodice Front-A,B
- 2 Lower Front (Overlay)-A,B
- 3 Upper Front (Overlay)-A,B
- 4 Shoulder Strap (Front)-A
- 5 Bodice Back-A,B
- 6 Bodice Side Back-A,B
- 7 Shoulder Strap (Back)-A
- 8 Skirt Front-A
- 9 Pocket-A,B
- 10 Skirt Back-A
- 11 Tie-A,B
- 12 Shoulder Strap-B
- 13 Pants Front-B
- 14 Pants Back-B

PATTERN MARKINGS

- GRAINLINE:** Place on straight grain of fabric, parallel to selvage or fold.
- FOLDLINE:** Place line on fold of fabric.
- BUTTONHOLE MARKING:** Indicates exact length and placement of buttonholes.
- BUTTON MARKING:** Indicates button placement.
- NOTCHES AND SYMBOLS:** For matching seams and construction details.
- Indicates the Bustline, Waistline, Hip and/or Biceps. Measurements refer to circumference of Finished Garment (Body Measurement + Wearing Ease + Design Ease). Adjust pattern if necessary. The measurement excludes pleats, tucks, darts and seam allowances.
- SEAM ALLOWANCE:** 5/8" (1.5cm) included unless otherwise indicated, but not printed on tissue.

ADJUST IF NECESSARY

- Lengthen or Shorten at adjustment lines (==) or where indicated on pattern. If substantial length is added, you may need to purchase additional fabric.
- TO SHORTEN:** Crease along adjustment line. Make a fold half the amount needed. Tape in place.
- TO LENGTHEN:** Slash between adjustment lines. Spread amount as needed, keeping edges parallel. Tape over paper.
- When Alteration lines are not on tissue, lengthen or shorten at lower edge.

CUTTING AND MARKING

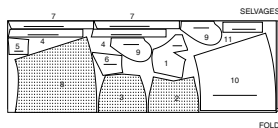
- SHRINK FABRIC** if not labeled pre-shrunk. Press.
- CIRCLE LAYOUT** for View, Size, Fabric Width.
- Use **WITH NAP** layout for fabrics with one-way designs, nap, pile or surface shading. Because most knits have surface shading, a with nap layout is used.
- For **DOUBLE THICKNESS (WITH FOLD)** - fold fabric with right sides together.
- DOUBLE THICKNESS (WITHOUT FOLD)** - For fabrics with nap, fold fabric crosswise, right sides together. Mark as shown. Cut along crosswise fold of fabric (A). Turn upper layer 180° so arrows go in same direction and place over lower layer, right sides together (B).
- For **SINGLE THICKNESS** - place fabric right side up. (For Fur Flee fabrics, place pile side down.)
- ★ Cut other pieces first, allowing enough fabric to cut this piece. Open fabric. For "Cut 1" pieces, cut piece once on single layer of fabric with piece face up on right side of fabric.
- Pattern may have cutting lines for several sizes. Select the proper cutting line or pattern pieces for your size.
- Before **CUTTING** place all pieces on fabric according to layout. Pin. (Layouts show approximate position of pattern pieces; position may vary according to your pattern size.) Cut **ACCURATELY**, cutting notches outward.
- Before removing pattern, **TRANSFER MARKINGS** and lines of construction to Wrong Side of fabric, using the Pin and Chalk/Pencil method or Tracing Paper and Dressmaker Wheel. Markings needed on right side of fabric should be thread traced.
- NOTE:** Broken-line boxes (a| b| c|) in layouts represent pieces cut by measurements provided.

CUTTING LAYOUTS

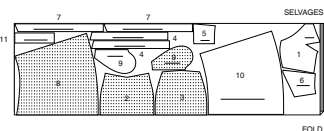
DRESS A

USE PIECES: 1 2 3 4 5 6 7 8 9 10 11

60" (150 CM)
WITH NAP
SIZES 10 12 14 16 18



60" (150 CM)
WITH NAP
SIZES 20 22 24 26



LINING A,B (Bodice Front, Back and Side Back)

USE PIECES: 1 5 6

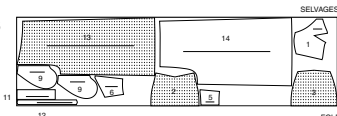
60" (150 CM)
WITH NAP
ALL SIZES



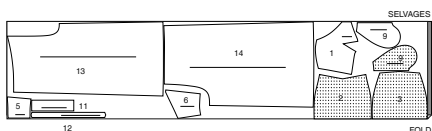
JUMPSUIT B

USE PIECES: 1 2 3 5 6 9 11 12 13 14

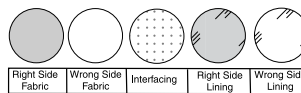
60" (150 CM)
WITH NAP
SIZES 10 12 14 16



60" (150 CM)
WITH NAP
SIZES 18 20 22 24 26

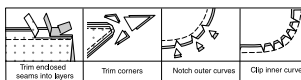


**SEWING INFORMATION
FABRIC KEY**



SEAM ALLOWANCES

Use 5/8" (1.5cm) seam allowances unless otherwise indicated.



PIN AND FIT

Pin or baste seams, **RIGHT SIDE TOGETHER**, matching notches. Fit garment before stitching major seams.

PRESS

Press seam allowances flat; then open unless otherwise stated. Clip where necessary so they lie flat.

GLOSSARY

Sewing terms appearing in **BOLD TYPE** in Sewing Instructions are explained below.

GATHER - Stitch along seamline and again 1/4" (6mm) away in seam allowance, using long machine stitches. Pull thread ends when adjusting to fit.

NARROW HEM - Turn in hem; press, easing in fullness if necessary. Open out hem. Turn in again so raw edge is along crease; press. Turn in along crease; stitch.

REINFORCE - Stitch along seamline where indicated in sewing instructions, using small machine stitches.

UNDERSTITCH - Open out facing or underside of garment; stitch to seam allowance close to seam.

SLIPSTITCH - Slide needle through a folded edge, then pick up a thread of underneath fabric.



@keechiibstyle

PATTERN PIECES WILL BE IDENTIFIED BY NUMBERS THE FIRST TIME THEY ARE USED.

STITCH SEAMS WITH RIGHT SIDES TOGETHER UNLESS OTHERWISE STATED.

SEWING DIRECTIONS

NOTE: Under each sub-heading, the first view will be illustrated, unless otherwise indicated.

DRESS A, JUMPSUIT B

BODICE FRONT

1. Pin dart seam on **BODICE FRONT (1)**, **RIGHT** sides together, matching dots and seam lines. Stitch along seam lines. Slash fold of dart to within 1" (2.5cm) from point of stitching. Trim dart to 3/8" (1cm) from stitching. Press dart open and point of dart flat.

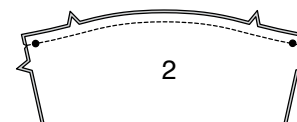


2. Pin bodice front sections, **RIGHT** sides together, matching dots. Stitch center front seam, from lower edge to small dot. Press seam open.

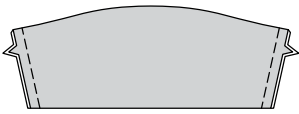


LOWER FRONT OVERLAY

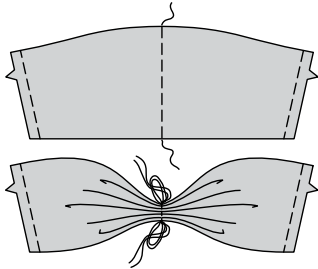
3. With **RIGHT** sides together, fold **LOWER FRONT (2)** (overlay) along foldline, matching centers and large dots. Stitch upper edge; trim seam.



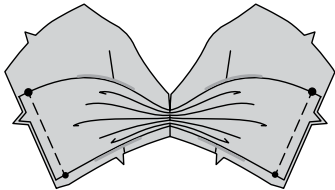
4. Turn overlay RIGHT side out; press. Baste raw edges together.



5. To gather overlay, stitch along center front, using long machine stitches. Adjust gathers as tightly as possible. Secure thread ends.

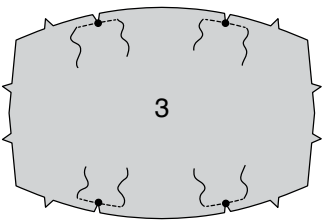


6. On outside, pin lower overlay to side edges of bodice front, matching centers, small and large dots; baste raw edges.

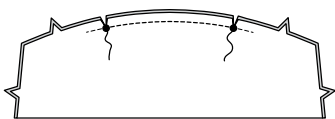


UPPER FRONT OVERLAY

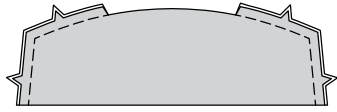
7. **REINFORCE** upper and lower edge of UPPER FRONT (3) (overlay) through large dots. Clip to large dots.



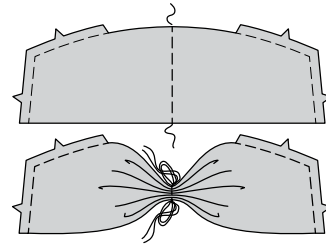
8. With RIGHT sides together, fold overlay along foldline, matching centers and dots. Stitch upper edge between clips; trim seam.



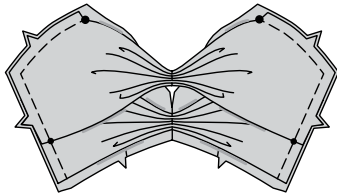
9. Turn overlay RIGHT side out; press. Baste raw edges.



10. To gather overlay, stitch along center front, using long machine stitches. Adjust gathers as tightly as possible. Secure thread ends.

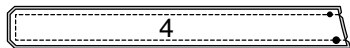


11. On outside, pin upper overlay to side and upper edges of bodice front, matching centers and dots; baste raw edges.



FRONT SHOULDER STRAPS A

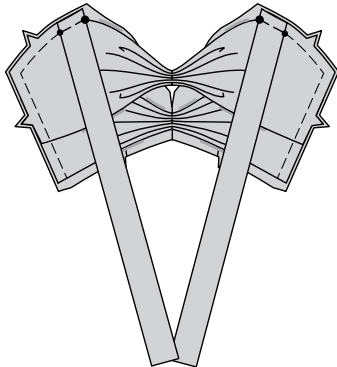
12. For each front strap, pin two SHOULDER STRAP (4) sections, RIGHT sides together, matching dots. Stitch in a 3/8"(1cm) seam, leaving end with dots open; trim seams.



13. Turn straps RIGHT side out; press. Baste raw edges together.

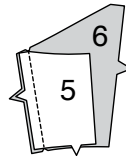


14. On outside, pin straps to upper edge of bodice front, matching dots, having raw edges even; baste.

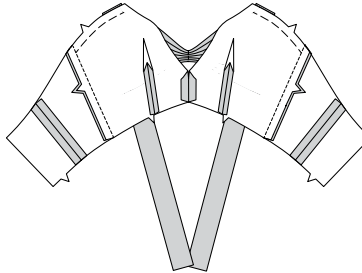


BODICE BACK

15. Stitch BODICE SIDE BACK (6) to BODICE BACK (5) at side back seam.



16. Stitch bodice back to bodice front at sides. Press seams toward back.



BACK SHOULDER STRAPS A

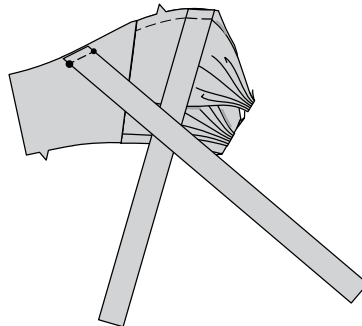
17. For each back strap, pin two SHOULDER STRAP (7) sections, RIGHT sides together, matching dots. Stitch in a 3/8"(1cm) seam, leaving end with dots open; trim seams.



18. Turn strap RIGHT side out; press. Baste raw edges together.



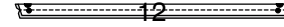
19. On outside, pin straps to upper edge of bodice back, matching large and small dots, having raw edges even; baste.



SHOULDER STRAPS B

OPTIONAL: If using purchased clear shoulder straps, apply to bodice following manufacturer's directions.

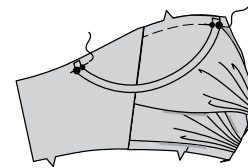
20. If not using purchased clear shoulder straps, follow directions below:
With RIGHT sides together, fold SHOULDER STRAP (12) in half lengthwise, matching dots. Stitch long edges in a 3/8"(1cm) seam, leaving ends open; trim seams.



21. Turn strap RIGHT side out; press. Baste raw edges together.

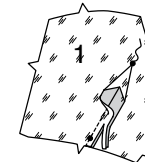


22. On outside, pin straps to upper edge of bodice front and back, matching dots, having raw edges even; baste.



BODICE LINING

23. Pin dart seam on bodice front LINING (1), RIGHT sides together, matching dots and seam lines. Stitch along seam lines. Slash fold of dart to within 1"(2.5cm) from point of stitching. Trim dart to 3/8"(1cm) from stitching. Press dart open and point of dart flat.



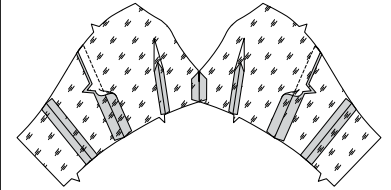
24. Pin bodice front lining sections, RIGHT sides together, matching dots. Stitch center front seam, from lower edge to small dot. Press seam open.



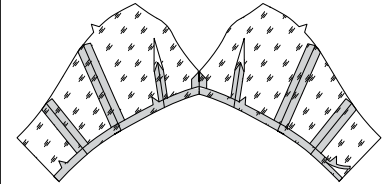
25. Stitch bodice side back LINING (6) to bodice back LINING (5) at side back seam.



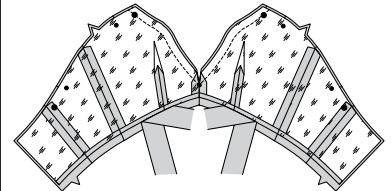
26. Stitch bodice back lining to bodice front lining at sides. Press seams open.



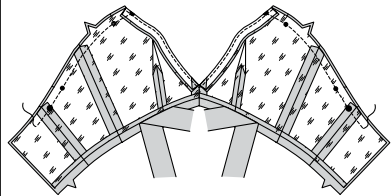
27. Press under 5/8"(1.5cm) on lower edge of lining. Trim pressed edge to 3/8"(1cm).



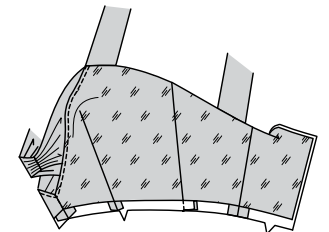
28. Keeping upper overlay free at center front, pin front lining to bodice front, RIGHT sides together, matching centers and dots. Stitch front edges, pivoting at center front; trim seams.



29. **UNDERSTITCH** front neck edge of lining. Pin remaining lining to upper and back edges of bodice, matching seams. Stitch upper edge, ending stitching 3"(7.5cm) from back edges; trim seams.

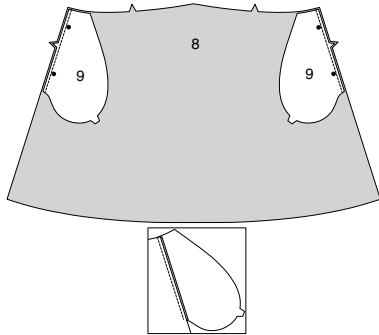


30. Turn lining to inside, turning straps out; press.

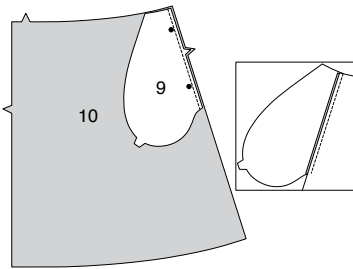


SKIRT A

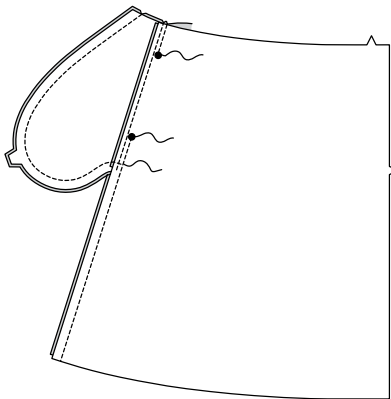
31. Pin one POCKET (9) section to SKIRT FRONT (8) at each side seam, matching notches. Stitch in a 3/8" (1cm) seam. Press seams toward pockets.



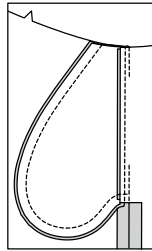
32. Pin one POCKET (9) section to each SKIRT BACK (10) at side seam, matching notches. Stitch in a 3/8" (1cm) seam. Press seams toward pockets.



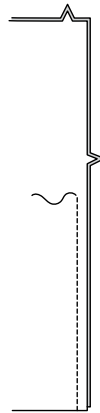
33. Pin skirt back to skirt front at sides, RIGHT sides together, matching notches and dots. Stitch, leaving free between dots. Stitch pocket edges together to side seams.



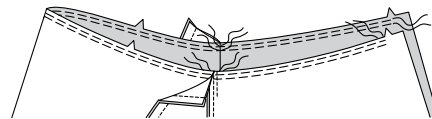
34. Clip back seam allowances below pockets. Turn pockets toward front along seamlines; press.



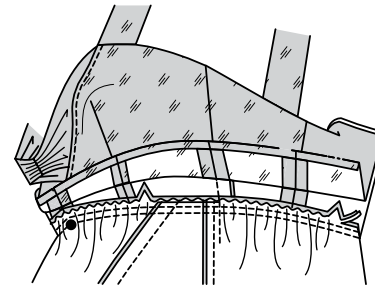
35. With RIGHT sides together, stitch back sections at center back, to within 2" (5cm) of notch.



36. GATHER upper edge of skirt between back notches, breaking stitching at side seams, keeping pockets free.

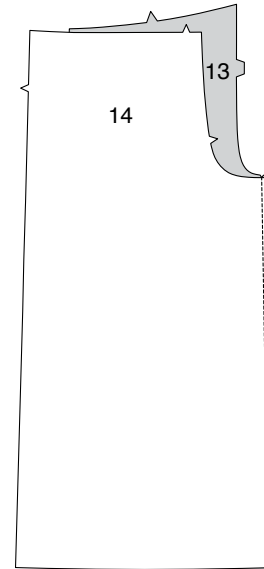


37. Pin skirt to bodice, RIGHT sides together, matching centers and side seams, keeping bodice lining and pockets free. Adjust gathers. Pin pockets in place over gathers; baste. Stitch. Stitch again 1/4" (6mm) away in seam allowances. Trim close to second stitching. Turn seams toward bodice.

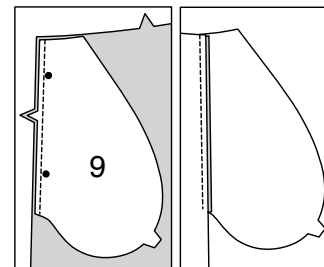


PANTS B

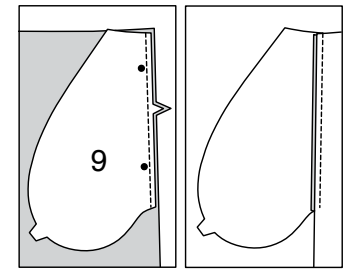
38. Stitch PANTS FRONT (13) to PANTS BACK (14) at inside leg edge.



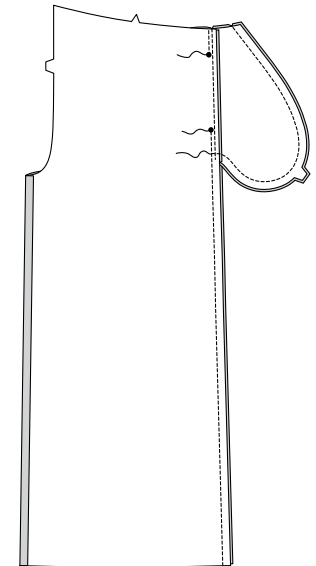
39. Pin one POCKET (9) section to pants front at each side seam, matching notches. Stitch in a 3/8" (1cm) seam. Press seams toward pockets.



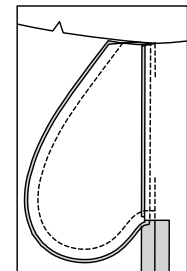
40. Pin one POCKET (9) section to each pants back at each side seam, matching notches. Stitch in a 3/8" (1cm) seam. Press seams toward pockets.



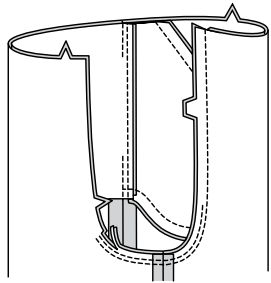
41. Pin pants back to pants front at sides, RIGHT sides together, matching notches and dots. Stitch, leaving free between dots. Stitch pocket edges together to side seams.



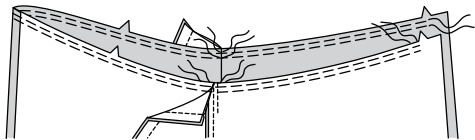
42. Clip back seam allowances below pockets. Turn pockets toward front along seamlines; press.



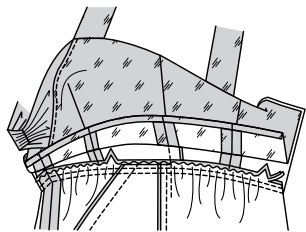
43. With RIGHT sides together, stitch back sections at center back, to within 2" (5cm) of back notch. Stitch again 1/4" (6mm) away in seam allowance along curve, as shown. Trim close to second stitching.



44. GATHER upper edge of pants between back notches, breaking stitching at side seams, keeping pockets free.

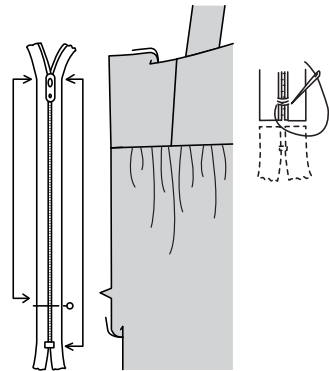


45. Pin pants to bodice, RIGHT sides together, matching centers and side seams, keeping bodice lining and pockets free. Adjust gathers. Pin pockets in place over gathers; baste. Stitch. Stitch again 1/4" (6mm) away in seam allowances. Trim close to second stitching. Turn seams toward bodice.

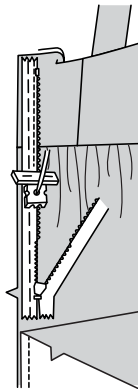


ZIPPER

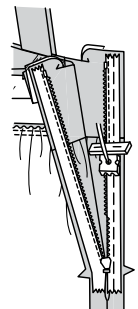
46. NOTE: It may be necessary to shorten zipper. To make new zipper stop, place zipper along opening edge (with pull tab 1/8" (3mm) below seamline). Mark placement of new zipper stop. Whipsitch across teeth at marking. Cut zipper 3/4" (2cm) below the new stop.



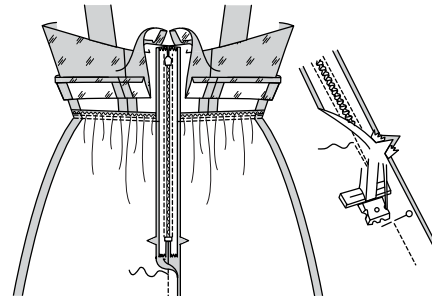
47. Open the zipper and press the tape flat. Keep the free upper edges of bodice back lining out of the way. On OUTSIDE, pin RIGHT side of the zipper face down on the RIGHT side of the zipper opening. Have the coil along the seam line, the tape within the seam allowance and the top stop 3/4" (2cm) below upper edge, as shown. Hand-baste along center of tape. Position zipper foot over coil. Stitch along tape to notch. Back-stitch to reinforce.



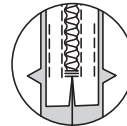
48. Pin the remaining half of the zipper to the LEFT side of the zipper opening in same manner. Hand-baste along the center of tape. Position zipper foot at the top of the zipper with LEFT groove over the coil. Stitch along tape to the notch. Back-stitch to reinforce.



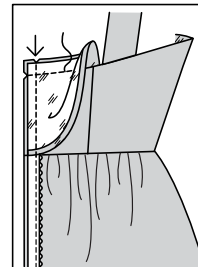
49. Close zipper and check that it is invisible from the OUTSIDE. Pull the free ends of the zipper tape away from the seam allowance. Pin remaining center back seam together below zipper. Position zipper foot all the way to the LEFT so the needle goes down through the outer notch of the foot. Start stitching seam 1/4" (6mm) above the lowest stitch and slightly to the LEFT. Stitch remainder of seam connecting to previous stitching.



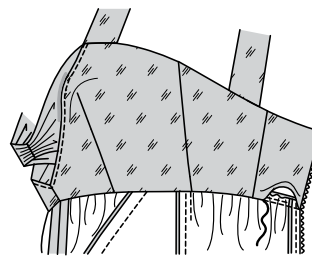
50. If you prefer, open out each seam allowance at end of zipper and stitch tape to seam allowance.



51. Open out back opening edges of garment, rolling the zipper teeth away from the opening edge. Turn back lining to OUTSIDE. With RIGHT sides together, pin back and back neck edges of garment and lining together. Stitch remaining back neck edges, connecting to previous stitching. Trim neck seam. Stitch across lining 1/2" (1.3cm) from back edges, keeping zipper teeth free. Trim corner. Do not trim center back edges.



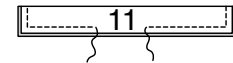
52. Turn lining to INSIDE; press. Pin pressed edge of bodice lining over seam. SLIPSTITCH in place.



FINISHING

TIES

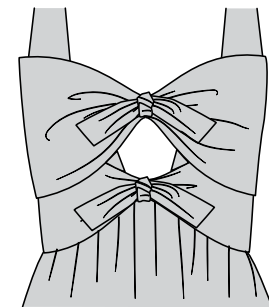
53. With RIGHT sides together, fold TIE (11) in half lengthwise. Stitch in a 3/8" (1cm) seam, leaving an opening for turning; trim seams.



54. Turn tie RIGHT side out; press. SLIPSTITCH opening edges together.

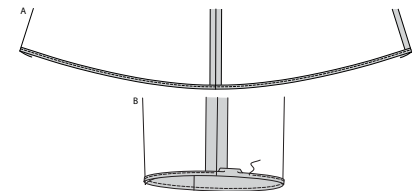


55. Wrap one tie around center of each front overlay, forming knot and having ends extending evenly.



HEM(S)

56. Finish lower edge of garment with a 5/8" (1.5cm) NARROW HEM, easing where necessary.





Congrats!

You've completed your sewing adventure

SHARE YOUR LOOK



Post your pattern and tag us
[@simplicity_creative_group](#) and [#knowMepatterns](#)
for a chance to be featured on our social media.

Look for more PDF patterns at [simplicity.com](https://www.simplicity.com)

Have a question or need help with your sewing project call us at
1-800-782-0323

