



LYDIA NAOMI
knowME[™]
BY MIMI G

ME2115



Scan QR code
for a Sew-Along
video tutorial.



@Lydianaomistudio



Average

MISSES' DRESS IN TWO LENGTHS											
Suggested Fabrics: Charmeuse, Cotton Lawn, Crepe de Chine, Gauze, Rayon Blends, Silky Types, Viscose. Interfacing: Lightweight Fusible.											
Notions: A,B: Elastic thread, 1½ yds. (1.3m) of ¾" (1cm) elastic, ½" (1.3cm) buttons: Ten for A, Eleven for B.											
Sizes	8	10	12	14	16	18	20	22	24	26	
European	34	36	38	40	42	44	46	48	50	52	
BODY MEASUREMENTS: Select pattern size based on body measurements											
Bust	31½	32½	34	36	38	40	42	44	46	48	Ins.
Waist	24	25	26½	28	30	32	34	37	39	41	"
Hip-9" below waist	33½	34½	36	38	40	42	44	46	48	50	"
Back-neck to waist	15¾	16	16¼	16½	16¾	17	17¼	17½	17¾	18	"
Dress A	60**	2¾	2¾	2¾	2¾	27½	27½	3½	3½	3¼	3¼ Yds.
Interfacing	20" - 1½ yds.										
Dress B	60**	3½	3¼	3¼	3¼	3¾	3¾	4½	4½	4½	4½ Yds.
Interfacing	20" - 1½ yds.										
*with nap **without nap											

Moins Facile

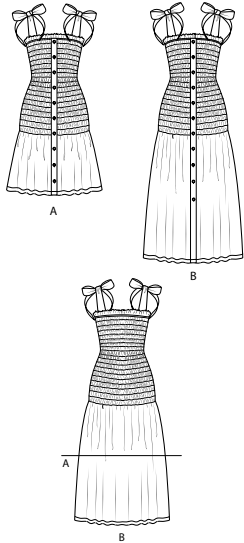
ROBE EN DEUX LONGUEURS POUR JEUNES FEMMES												
Tissus Conseillés: Charmeuse, Linon de coton, Crêpe de Chine, Gaze, Mélanges de rayonnées, Types soie, Viscose. Entoilage: Thermocollant léger.												
Mercerie: A,B: Fil élastique, 1.3m d'élastique de 1cm, boutons de 1.3cm: 10 pour A, 11 pour B.												
Tailles	8	10	12	14	16	18	20	22	24	26		
Françaises	36	38	40	42	44	46	48	50	52	54		
Européen	34	36	38	40	42	44	46	48	50	52		
MESURES DU CORPS: Choisissez la taille du patron basée sur les mesures du corps												
Poitrine	80	83	87	92	97	102	107	112	117	122	cm	
Taille	61	64	67	71	76	81	87	94	99	104	"	
Hanches (23cm au-dessous de la taille)	85	88	92	97	102	107	112	117	122	127	cm	
Dos du cou à la taille	40	40.5	41.5	42	42.5	43	44	44.5	45	46	"	
Robe A	150cm*	2.5	2.5	2.5	2.5	2.6	2.6	2.9	2.9	3.0	3.0	m
Entoilage	51cm - 1.0m											
Robe B	150cm*	2.9	3.0	3.0	3.0	3.0	3.1	3.8	3.8	3.8	3.8	m
Entoilage	51cm - 1.5m											

*avec sens **sans sens

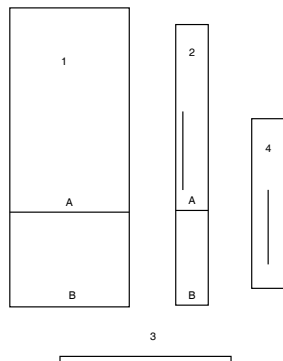




@Lydianaomistudio

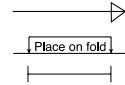


4 PATTERN PIECES



- 1 FRONT AND BACK A,B
2 PLACKET A,B
3 ELASTIC GUIDE FOR CASING A,B
4 SHOULDER STRAP A,B

PATTERN MARKINGS

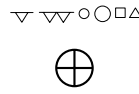


GRAINLINE: Place on straight grain of fabric, parallel to selvage or fold.

FOLDLINE: Place line on fold of fabric.

BUTTONHOLE MARKING: Indicates exact length and placement of buttonholes.

BUTTON MARKING: Indicates button placement.



NOTCHES AND SYMBOLS: For matching seams and construction details.

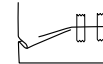
Indicates the Bustline, Waistline, Hip and/or Biceps. Measurements refer to circumference of Finished Garment (Body Measurement + Wearing Ease + Design Ease). Adjust pattern if necessary. The measurement excludes pleats, tucks, darts and seam allowances.

SEAM ALLOWANCE: 5/8" (1.5cm) included unless otherwise indicated, but not printed on tissue.

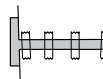
ADJUST IF NECESSARY

Lengthen or Shorten at adjustment lines (==) or where indicated on pattern. If substantial length is added, you may need to purchase additional fabric.

TO SHORTEN: Crease along adjustment line. Make a fold half the amount needed. Tape in place.



TO LENGTHEN: Slash between adjustment lines. Spread amount as needed, keeping edges parallel. Tape over paper.



When Alteration lines are not on tissue, lengthen or shorten at lower edge.

CUTTING AND MARKING

SHRINK FABRIC if not labeled pre-shrunk. Press.

CIRCLE LAYOUT for View, Size, Fabric Width.

Use **WITH NAP** layout for fabrics with one-way designs, nap, pile or surface shading. Because most knits have surface shading, a with nap layout is used.

For **DOUBLE THICKNESS (WITH FOLD)** - fold fabric with right sides together.

*** DOUBLE THICKNESS (WITHOUT FOLD)** - For fabrics with nap, fold fabric crosswise, right sides together. Mark as shown. Cut along crosswise fold of fabric (A). Turn upper layer 180° so arrows go in same direction and place over lower layer, right sides together (B).

For **SINGLE THICKNESS** - place fabric right side up. (For Fur Pile fabrics, place pile side down.)

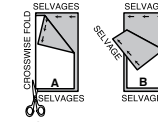
★ Cut other pieces first, allowing enough fabric to cut this piece. Open fabric. For "Cut 1" pieces, cut piece once on single layer of fabric with piece face up on right side of fabric.

Pattern may have cutting lines for several sizes. Select the proper cutting line or pattern pieces for your size.

Before **CUTTING** place all pieces on fabric according to layout. Pin. (Layouts show approximate position of pattern pieces; position may vary according to your pattern size.) Cut **ACCURATELY**, cutting notches outward.

Before removing pattern, **TRANSFER MARKINGS** and lines of construction to Wrong Side of fabric, using the Pin and Chalk Pencil method or Tracing Paper and Dressmaker Wheel. Markings needed on right side of fabric should be thread traced.

NOTE: Broken-line boxes (a! b! c!) in layouts represent pieces cut by measurements provided.



CUTTING LAYOUTS

RIGHT SIDE OF PATTERN	WRONG SIDE OF PATTERN	RIGHT SIDE OF FABRIC	WRONG SIDE OF FABRIC
-----------------------	-----------------------	----------------------	----------------------

NOTE: DASHED LINE SHOWN ON PATTERN PIECES IN CUTTING LAYOUTS INDICATES CUTTING LINE FOR SHORTER LENGTH

DRESS A,B

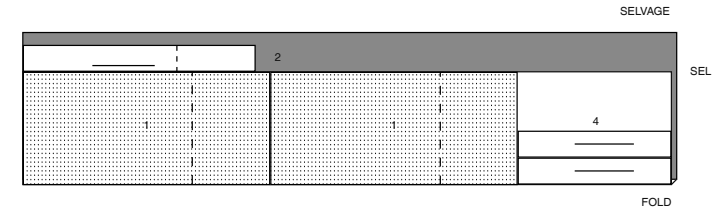
PIECE 3 IS CUT OF ELASTIC
PIECES 1 2 4

60" (150CM)

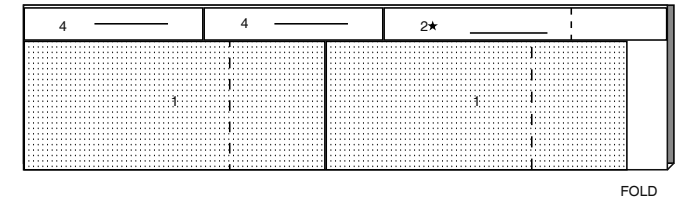
WITH NAP

SIZES 8 10 12 14 16 18

CUT ONE OF PIECE 2



SELVAGES



60" (150CM)

WITH NAP

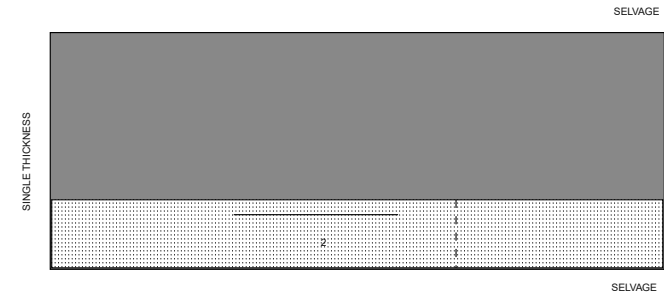
SIZES 20 22 24 26

INTERFACING

PIECE 2

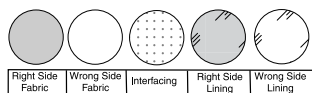
20" (51CM)

ALL SIZES



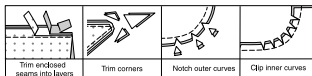
SEWING INFORMATION

FABRIC KEY



SEAM ALLOWANCES

Use 5/8" (1.5cm) seam allowances unless otherwise indicated.



PIN AND FIT

Pin or baste seams, **RIGHT SIDE TOGETHER**, matching notches. Fit garment before stitching major seams.

PRESS

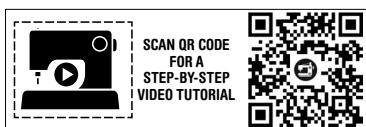
Press seam allowances flat; then open unless otherwise stated. Clip where necessary so they lie flat.

GLOSSARY

Read General Directions on page 1 before you begin.

Sewing terms appearing in **BOLD TYPE** in Sewing Instructions are explained below.

NARROW HEM - Turn in hem; press, easing in fullness if necessary. Open out hem. Turn in again so raw edge is along crease; press. Turn in along crease; stitch.



@Lydianaomistudio

PATTERN PIECES WILL BE IDENTIFIED BY NUMBERS THE FIRST TIME THEY ARE USED.

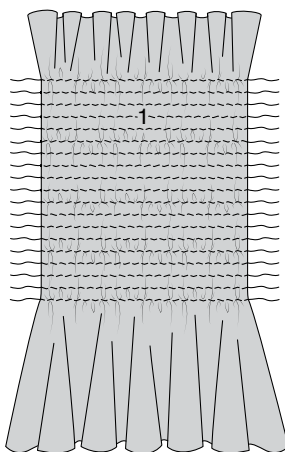
STITCH SEAMS WITH RIGHT SIDES TOGETHER UNLESS OTHERWISE STATED.

DRESS A, B

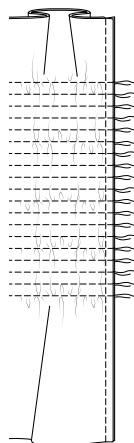
1. Prepare machine for shirring by threading sewing bobbin by hand with elastic thread, using slight tension. Use regular thread on the machine needle. Stitch some test samples to find the best stitch length and thread tension for your machine.



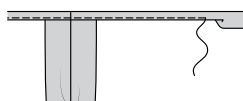
2. To shirr each **FRONT AND BACK** (1) section sew the first row of shirring along the stitching line below the bottom tuck stitching line. Sew along the remaining stitching lines below the first row of stitching for a total of nineteen rows of shirring.



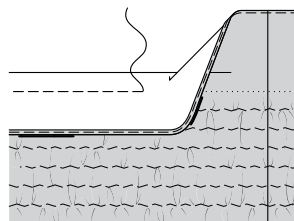
3. Pin front and back sections, **RIGHT** sides together, matching rows of shirring. Stitch, stitching across ends of elastic threads to secure.



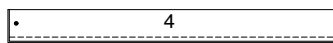
4. Make a 3/8" (1cm) **NARROW HEM** on upper edge of dress.



5. To make tuck, fold upper edge along foldline, **RIGHT** sides together, bring stitching lines for tuck together. Stitch along stitching lines.



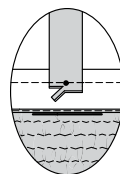
6. For each strap, fold **SHOULDER STRAP** (4), in half lengthwise, **RIGHT** sides together, matching large dots. Stitch, leaving end with markings open using 3/8" (1cm) seam. Trim corner.



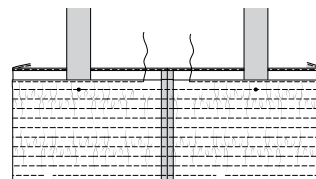
7. Turn **RIGHT** side out. Press. Baste raw edges together.



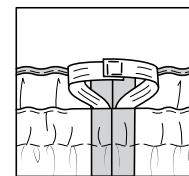
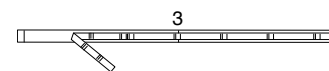
8. On **INSIDE**, pin strap over extended tuck, matching large dots, with seam allowances pointing away from fold of tuck, as shown. Stitch across strap along previous stitching for tuck. Trim strap seam allowance to a scant 1/4" (6mm), being careful not to cut dress.



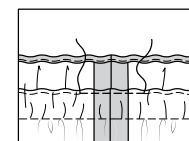
9. Turn tuck toward upper edge of dress covering straps. Baste close to fold. On **OUTSIDE**, to form casing for elastic, stitch tuck in place using basting as a guide, leaving an opening at one side seam to insert elastic.



10. Cut one piece of 1/4" (6mm) wide elastic using **GUIDE FOR ELASTIC** (3). Insert elastic through casing, lapping ends 1/2" (1.3cm). Stitch ends securely.



11. Stitch opening in casing close to fold of tuck, stretching elastic as you stitch.



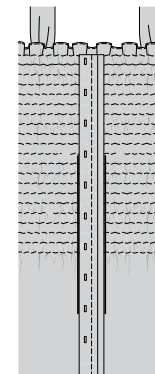
12. Fuse **INTERFACING** to **WRONG** side of **PLACKET** (2) following manufacturer's instructions. Fold placket along foldline, **RIGHT** sides together, having raw edges even. Stitch side and upper edges using 3/8" (1cm) seam. Trim corner.



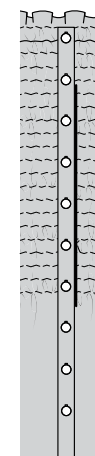
13. Turn **RIGHT** side out. Press. Make buttonholes in placket at markings.



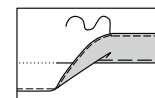
14. On **OUTSIDE**, pin placket to dress matching center fronts, having upper edge along stitching below ruffle and lower edges even. Stitch placket to dress along stitching line and close to left side edge. Baste lower edges together.



15. Fold placket along stitching line and mark placement for buttons using buttonholes as a guide. Sew buttons to markings.



16. Turn up 1-1/4" (3.2cm) hem on lower edge of dress. Press. Baste close to fold. **FINISH** raw edge of hem. Stitch hem in place 1" (2.5cm) from lower edge.





Congrats!

You've completed your sewing adventure

SHARE YOUR LOOK



Post your pattern and tag us
[@simplicity_creative_group](#) and [#knowMepatterns](#)
for a chance to be featured on our social media.

Look for more PDF patterns at [simplicity.com](https://www.simplicity.com)

Have a question or need help with your sewing project call us at
1-800-782-0323



KnowMe ©2024 a division of IG Design Group Americas Inc. • Atlanta, GA 30342 USA www.thedesigngroup.com • All Rights Reserved. www.mccall.com • Made in the U.S.A. Fabriqué aux États-Unis.
To be used for individual private home use only and not for commercial or manufacturing purposes. • A usage privé seulement et non à des fins commerciales ou de production en série. • Para uso privado solamente, no se puede utilizar con propósitos de comercialización o de producción en serie.