



JULIAN CREATES
knowME
BY **mimi g**

ME2113




Scan QR code for a Sew-Along video tutorial.



@juliancreates



Average

MEN'S SHIRTS AND PANTS

Suggested Fabrics: A, B: Chambray, Cotton Blends, Linen Blends, Shirtings. C: Chino, Cotton Blends, Denim, Gabardine, Lightweight Wool Blends, Linen Blends, Stretch Wovens. **Lining C:** Cotton Blends, Polyester Blends. **Interfacing:** Lightweight Fusible.

Notions: A, B: Ten 1/2" (1.3cm) buttons, two 7" (18cm) invisible zippers (cut to fit). C: One 7" (18cm) zipper (cut to fit), three 1/4" (6mm) eyelets with a 4mm opening, one hook and bar, one prong belt buckle with 1 1/2" (4cm) opening, optional self cover buckle kit.

Sizes	36	38	40	42	44	46	48	50	52	54	56
-------	----	----	----	----	----	----	----	----	----	----	----

BODY MEASUREMENTS: Select pattern size based on body measurements

	Chest	Waist	Hip
36	36	30	37
38	38	28	39
40	40	30	41
42	42	32	43
44	44	34	45
46	46	36	47
48	48	38	49
50	50	40	51
52	52	42	53
54	54	44	55
56	56	46	57

Shirt A	45**	2 3/4	2 3/4	2 3/4	2 3/4	2 3/4	2 3/4	2 3/4	2 3/4	3 1/4	3 3/4	3 3/4	3 1/2	Yds.
60**	2	2	2 1/4	2 1/4	2 1/4	2 1/4	2 1/4	2 1/4	2 1/4	2 1/2	2 1/2	2 1/2	2 3/4	"

Interfacing A, B 20" - 3/4 yd.

Shirt B	45**	1 1/2	1 1/2	1 1/2	1 1/2	1 1/2	1 1/2	1 1/2	1 1/2	1 1/2	1 1/2	1 1/2	1 1/2	Yds.
60**	1 3/4	1 3/4	1 3/4	1 3/4	1 3/4	1 3/4	1 3/4	1 3/4	1 3/4	1 3/4	1 3/4	1 3/4	1 3/4	"

Contrast (Yoke Right Front, Yoke Left Front, Yoke Back, Front Facing, Back Facing, Sleeve)	45**	1 1/2	1 1/2	1 1/2	1 1/2	1 1/2	1 1/2	1 1/2	1 1/2	1 1/2	1 1/2	1 1/2	1 1/2	Yds.
60**	1 1/4	1 1/4	1 1/4	1 1/4	1 1/4	1 1/4	1 1/4	1 1/4	1 1/4	1 1/4	1 1/4	1 1/4	1 1/4	"

Pants C	45**	2 3/4	2 3/4	2 3/4	2 3/4	2 3/4	2 3/4	2 3/4	2 3/4	2 3/4	2 3/4	2 3/4	2 3/4	Yds.
60**	1 3/4	1 3/4	1 3/4	1 3/4	1 3/4	1 3/4	1 3/4	1 3/4	1 3/4	1 3/4	1 3/4	1 3/4	1 3/4	"

Lining 45** - 3/4 yd.

Interfacing	20"	3/4	3/4	7/8	7/8	7/8	7/8	1	1	1	1	1	1	Yd.
-------------	-----	-----	-----	-----	-----	-----	-----	---	---	---	---	---	---	-----

FINISHED GARMENT MEASUREMENTS (Includes Design and Wearing Ease)

A, B Chest	44 1/2	46 1/2	48 1/2	50 1/2	52 1/2	54 1/2	56 1/2	58 1/2	60 1/2	62 1/2	64 1/2	Ins.
A, B Waist	44 1/2	46 1/2	48 1/2	50 1/2	52 1/2	54 1/2	56 1/2	58 1/2	60 1/2	62 1/2	64 1/2	"
C Waist	31 1/2	33 1/2	35 1/2	37 1/2	39 1/2	41 1/2	43 1/2	45 1/2	47 1/2	49 1/2	51 1/2	"
C Hip	39	41	43	45	47	49	51	53	55	57	59	"
Width, each leg	14	14 1/2	15	15 1/2	16	16 1/2	17	17 1/2	18	18 1/2	19	Ins.
Pants C	14	14 1/2	15	15 1/2	16	16 1/2	17	17 1/2	18	18 1/2	19	Ins.
Finished back length from base of neck	30	30 1/4	30 1/2	30 3/4	31	31 1/4	31 1/2	31 3/4	32	32 1/4	32 1/2	Ins.
Shirt A, B	30	30 1/4	30 1/2	30 3/4	31	31 1/4	31 1/2	31 3/4	32	32 1/4	32 1/2	Ins.
Finished side length from waist	39 1/2	39 3/4	40	40 1/4	40 1/2	40 3/4	41	41 1/4	41 1/2	41 3/4	42	Ins.
Pants C	39 1/2	39 3/4	40	40 1/4	40 1/2	40 3/4	41	41 1/4	41 1/2	41 3/4	42	Ins.

*with nap **without nap

Moins Facile

CHEMISES ET PANTALON POUR HOMMES

Tissus Conseillés: A, B: Chambray, Cotonnades, Lin mélangés, Shirtings. C: Chino, Cotonnades, Denim, Gabardine, Lainages légers, Lin mélangés, Tissus tissés extensibles. **Doublure C:** Cotonnades, Mélanges de polyester. **Entoilage:** Thermocollant léger.

Mercerie: A, B: 10 boutons de 1.3cm, 2 fermetures à glissière invisible de 18cm (coupée pour ajuster). C: 1 fermeture à glissière invisible de 18cm (coupée pour ajuster), 3 œillets avec ouverture de 4mm, 1 crochet, 1 boucle ardillon de ceinture avec ouverture de 4cm, kit de boucle à couvrir (facultatif).

Tailles	36	38	40	42	44	46	48	50	52	54	56
---------	----	----	----	----	----	----	----	----	----	----	----

MESURES DU CORPS: Choisissez la taille du patron basée sur les mesures du corps

Poitrine	92	97	102	107	112	117	122	127	132	137	142	cm
Taille	76	82	87	92	99	107	112	117	122	127	132	"
Hanches (23cm au-dessous de la taille)	94	99	104	109	115	119	124	128	135	140	145	cm

Chemise A	115cm*	2.5	2.5	2.5	2.5	2.6	2.6	2.6	3.0	3.0	3.1	3.2	m
150cm*	1.8	1.8	1.9	1.9	1.9	2.2	2.3	2.3	2.3	2.3	2.4	2.4	"

Entoilage A, B 51cm - 0.6m

Chemise B	115cm*	1.4	1.4	1.4	1.4	1.4	1.4	1.5	1.8	1.8	1.8	1.8	m
150cm*	1.3	1.3	1.3	1.3	1.3	1.4	1.4	1.4	1.4	1.4	1.4	1.4	"

Contraste (Empiècement devant droit et gauche, Empiècement dos, Parementure du devant et dos, Manche)	115cm*	1.4	1.4	1.4	1.4	1.4	1.4	1.4	1.5	1.6	1.6	1.6	m
150cm*	1.0	1.0	1.0	1.0	1.0	1.0	1.0	1.0	1.0	1.0	1.1	1.1	"

Pantalons C	115cm*	2.2	2.2	2.2	2.2	2.3	2.3	2.3	2.3	2.3	2.3	2.4	m
150cm*	1.4	1.5	1.6	1.9	1.9	1.9	1.9	1.9	2.1	2.3	2.3	"	

Doublure 115cm** - 0.6m

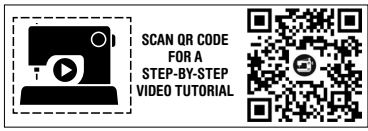
Entoilage	51cm	0.7	0.7	0.8	0.8	0.8	0.8	0.8	0.9	0.9	0.9	0.9	m
-----------	------	-----	-----	-----	-----	-----	-----	-----	-----	-----	-----	-----	---

MESURES DES VÊTEMENTS FINI (Motif et aisance de port compris)

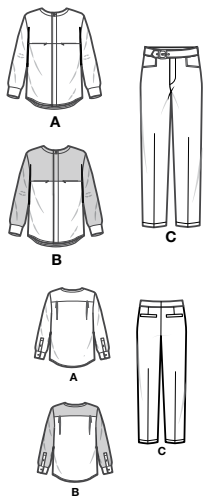
A, B Poitrine	113	118	123	128	133	138	144	149	154	159	164	cm
A, B Taille	113	118	123	128	133	138	144	149	154	159	164	"
C Taille	80	85	90	95	100	105	110	116	121	126	131	"
C Hanches	99	104	109	114	119	124	130	135	140	145	150	"
Largeur, chaque jambe	36	37	38	39	41	42	43	44	46	47	48	cm
Pantalons C	36	37	38	39	41	42	43	44	46	47	48	cm
Longueur finie - dos, votre nuque à l'ourlet	76	77	77	78	79	79	80	81	81	82	83	cm
Chemise A, B	76	77	77	78	79	79	80	81	81	82	83	cm
Longueur finie - côté, taille à l'ourlet	100	101	102	102	103	104	104	105	105	106	107	cm
Pantalons C	100	101	102	102	103	104	104	105	105	106	107	cm

*avec sens **sans sens

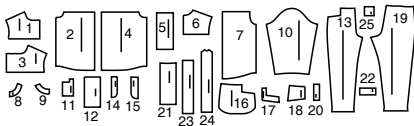




@juliancreates



25 PATTERN PIECES



- 1 Yoke Right Front-A,B
- 2 Right Front-A,B
- 3 Yoke Left Front-A,B
- 4 Left Front-A,B
- 5 Pocket-A,B
- 6 Yoke Back-A,B
- 7 Back-A,B
- 8 Front Facing-A,B
- 9 Back Facing-A,B
- 10 Sleeve-A,B
- 11 Placket-A,B
- 12 Cuff-A,B
- 13 Front-C
- 14 Right Fly-C
- 15 Left Fly Facing-C
- 16 Side Front and Pocket
- 17 Pocket Facing-C
- 18 Yoke Front-C
- 19 Back-C
- 20 Welt-C
- 21 Back Pocket-C
- 22 Back Pocket Facing-C
- 23 Right Waistband-C
- 24 Left Waistband-C
- 25 Tab-C

PATTERN MARKINGS

GRAINLINE: Place on straight grain of fabric, parallel to selvage or fold.

FOLDLINE: Place line on fold of fabric.

BUTTONHOLE MARKING: Indicates exact length and placement of buttonholes.

BUTTON MARKING: Indicates button placement.

NOTCHES AND SYMBOLS: For matching seams and construction details.

Indicates the Bustline, Waistline, Hip and/or Biceps. Measurements refer to circumference of Finished Garment (Body Measurement + Wearing Ease + Design Ease). Adjust pattern if necessary. The measurement excludes pleats, tucks, darts and seam allowances.

SEAM ALLOWANCE: 5/8" (1.5cm) included unless otherwise indicated, but not printed on tissue.

ADJUST IF NECESSARY

Lengthen or Shorten at adjustment lines (==) or where indicated on pattern. If substantial length is added, you may need to purchase additional fabric.

TO SHORTEN: Crease along adjustment line. Make a fold half the amount needed. Tape in place.

TO LENGTHEN: Slash between adjustment lines. Spread amount as needed, keeping edges parallel. Tape over paper.

When Alteration lines are not on tissue, lengthen or shorten at lower edge.

SHRINK FABRIC if not labeled pre-shrunk. Press.

CIRCLE LAYOUT for View, Size, Fabric Width.

Use **WITH NAP** layout for fabrics with one-way designs, nap, pile or surface shading. Because most knits have surface shading, a with nap layout is used.

For **DOUBLE THICKNESS (WITH FOLD)** - fold fabric with right sides together.

*** DOUBLE THICKNESS (WITHOUT FOLD)** - For fabrics with nap, fold fabric crosswise, right sides together. Mark as shown. Cut along crosswise fold of fabric (A). Turn upper layer 180° so arrows go in same direction and place over lower layer, right sides together (B).

For **SINGLE THICKNESS** - place fabric right side up. (For Fur Pile fabrics, place pile side down.)

CUTTING AND MARKING

★ Cut other pieces first, allowing enough fabric to cut this piece. Open fabric. For "Cut 1" pieces, cut piece once on single layer of fabric with piece face up on right side of fabric.

Pattern may have cutting lines for several sizes. Select the proper cutting line or pattern pieces for your size.

Before **CUTTING** place all pieces on fabric according to layout. Pin. (**Layouts show approximate position of pattern pieces; position may vary according to your pattern size.**) Cut **ACCURATELY**, cutting notches outward.

Before removing pattern, **TRANSFER MARKINGS** and lines of construction to Wrong Side of fabric, using the Pin and Chalk Pencil method or Tracing Paper and Dressmaker Wheel. Markings needed on right side of fabric should be thread traced.

NOTE: Broken-line boxes (a| b| c|) in layouts represent pieces cut by measurements provided.

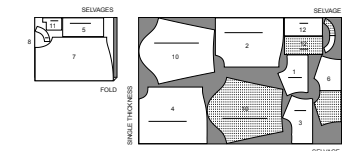
CUTTING LAYOUTS

RIGHT SIDE OF PATTERN	WRONG SIDE OF PATTERN	RIGHT SIDE OF FABRIC	WRONG SIDE OF FABRIC
-----------------------	-----------------------	----------------------	----------------------

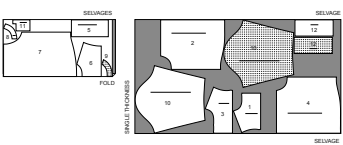
SHIRT A

USE PIECES: 1 2 3 4 5 6 7 8 9 10 11 12

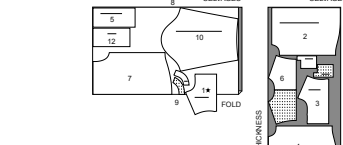
45" (115 CM) WITH NAP
 SIZES 36 38
 40 42 44 46 48



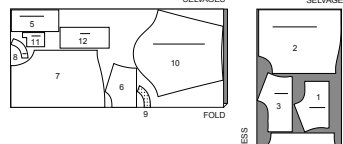
45" (115 CM) WITH NAP
 SIZES 50 52
 54 56



60" (150 CM) WITH NAP
 SIZES 36 38
 40 42 44



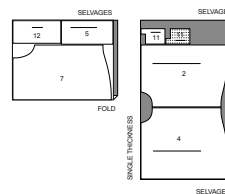
60" (150 CM) WITH NAP
 SIZES 46 48
 50 52 54 56



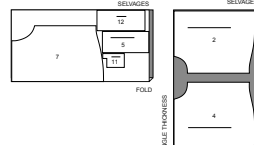
SHIRT B

USE PIECES: 2 4 5 7 11 12

45" (115 CM) WITH NAP
 SIZES 36 38
 40 42 44 46 48



45" (115 CM) WITH NAP
 SIZES 50 52 54 56



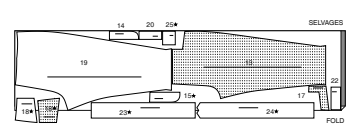
60" (150 CM) WITH NAP
 ALL SIZES



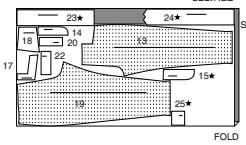
PANTS C

USE PIECES: 13 14 15 17 18 19 20 22 23 24 25

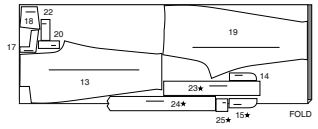
45" (115 CM) WITH NAP
 ALL SIZES



60" (150 CM) WITH NAP
 SIZES 36 38 40



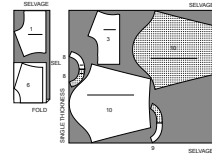
60" (150 CM) WITH NAP
 SIZES 42 44 46
 48 50 52 54 56



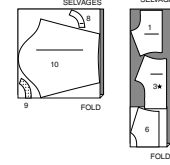
CONTRAST B

USE PIECES: 1 3 6 8 9 10

45" (115 CM) WITH NAP
 ALL SIZES



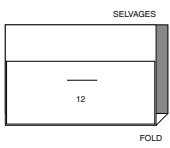
60" (150 CM) WITH NAP
 ALL SIZES



INTERFACING A,B

USE PIECE: 12

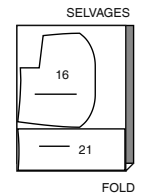
20" (51 CM) ALL SIZES



LINING C

USE PIECES: 16 21

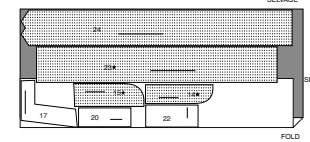
45" (115 CM) WITHOUT NAP
 ALL SIZES



INTERFACING C

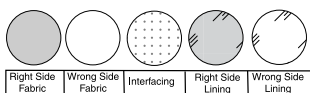
USE PIECES: 14 15 17 20 22 23 24

20" (51 CM) ALL SIZES



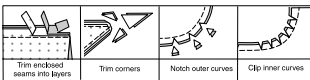
SEWING INFORMATION

FABRIC KEY



SEAM ALLOWANCES

Use 5/8" (1.5cm) seam allowances unless otherwise indicated.



PIN AND FIT

Pin or baste seams, **RIGHT SIDE TOGETHER**, matching notches. Fit garment before stitching major seams.

PRESS

Press seam allowances flat; then open unless otherwise stated. Clip where necessary so they lie flat.

GLOSSARY

Read **General Directions** on page 1 before you begin.

Sewing terms appearing in **BOLD TYPE** in Sewing Instructions are explained below.

DART - To make dart, with **RIGHT** sides together, fold the fabric through the center of the dart, bringing broken lines and small dots together. On **INSIDE**, place pins at **RIGHT** angles to the broken lines. Stitch the dart from wide end to point.

TIP- To prevent a "bubble" at the point, make the last few stitches right on the fold and leave the thread ends long enough to tie a knot. **DO NOT** back-stitch at the point.

Press the dart flat along the stitching to "blend" the stitches, then press dart as indicated in the Sewing Directions.

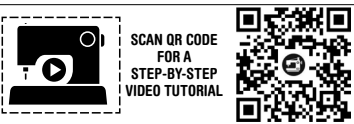
EASE - Loosen needle tension slightly. With **RIGHT** side up, stitch 5/8" (1.5cm) from cut edge using a long stitch. Stitch again 1/4" (6mm) from the first stitching within the seam allowance.

EDGE FINISH - Stitch 1/4" (6mm) from edge, turn under edge along stitching and stitch or zig-zag, or overlock/serge raw edges.

NARROW HEM - Press under hem allowance as indicated on tissue pattern. To form narrow hem, tuck under raw edge to meet crease. Press. Stitch hem in place.

STAYSTITCH - Stitch 1/2" (1.3cm) from cut edge in direction of arrows. This stitching stays in permanently to prevent stretching on curved edges. (Shown only in the first illustration.)

UNDERSTITCH - Press facing and seam away from garment, stitching through facing and seam allowances close to seam.



@juliancreates

PATTERN PIECES WILL BE IDENTIFIED BY NUMBERS THE FIRST TIME THEY ARE USED.

STITCH 5/8" (1.5CM) SEAMS WITH RIGHT SIDES TOGETHER UNLESS OTHERWISE STATED.

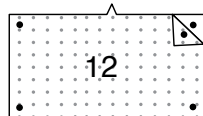
SEWING DIRECTIONS

SHIRT A, B

NOTE: Purchased zippers will be too long for opening edges and will be trimmed after installation.

INTERFACING

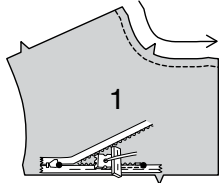
1. Pin interfacing to **WRONG** side of **CUFF** (12). Fuse in place following manufacturer's directions.



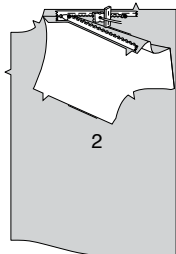
FRONT

2. **STAYSTITCH** neck edge of **YOKE RIGHT FRONT** (1) 1/2" (1.3cm) from cut edge in direction of arrows. This stitching stays in permanently to prevent stretching on curved edges. (Shown only in the first illustration.)

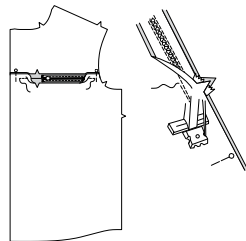
Open the zipper and press the tape flat on the **WRONG** side unrolling the coils. Do not press the coils. (Use a low iron setting.) On **OUTSIDE**, pin **RIGHT** side of the zipper face down on lower edge of yoke right front. Have the coil along the seam line, the tape within the seam allowance and the top stop just **INSIDE** the front small dot, as shown. Hand-baste along center of the tape. Position zipper foot at the top of the zipper with **RIGHT** groove of the foot over coil. Stitch along tape to the remaining small dot, backstitching at dot to reinforce.



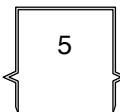
3. Pin the remaining half of the zipper to upper edge of the **RIGHT FRONT** (2) zipper opening in same manner. Make sure the front and armhole edges of the garment are even. Hand-baste along the center of the tape. Position zipper foot at the top of the zipper with **LEFT** groove over the coil. Stitch along tape to the remaining small dot, backstitching at dot to reinforce.



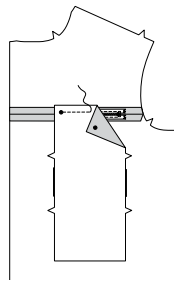
4. Close zipper and check that it is invisible from the **OUTSIDE**. Pull the free ends of the zipper tape away from the seam allowance. Pin remaining ends of yoke seam together between small dot and raw armhole edge and between small dot and raw front edge. Position zipper foot all the way to the **LEFT** so the needle goes down through the outer notch of the foot. Start stitching each end seam 1/4" (6mm) inside small dot and slightly to the **LEFT**, stitching together remaining front and yoke edges.



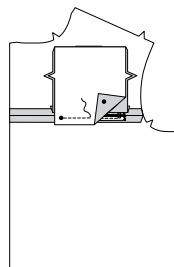
5. Fold pocket (5) along foldline with **RIGHT** sides together. Press; pressing in a crease.



6. Open out the pocket. With **RIGHT** sides together and raw edges even, pin pocket to lower edge of yoke (over zipper and front), matching small dots. Stitch close to previous stitching between the small dots.

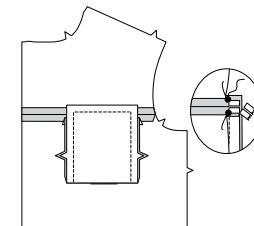


7. Turn pocket up. Fold pocket along foldline with **RIGHT** sides together. With **RIGHT** sides together and raw edges even, pin lower edge of pocket to upper edge of front (over zipper and yoke), matching small dots. Stitch close to previous stitching between the small dots.



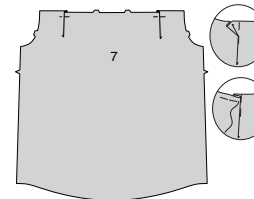
8. Press pocket toward front. On **INSIDE**, stitch pocket edges together above fold and across zipper ends, as shown. Trim zipper tape even with raw edges of pocket.

STAYSTITCH neck edge of **YOKE LEFT FRONT** (3). Insert zipper and apply pocket to yoke left front and **LEFT FRONT** (4) in the same manner.

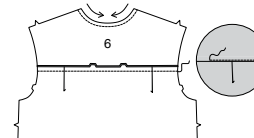


BACK

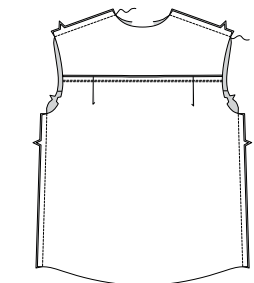
9. To make pleats on **BACK** (7), on **OUTSIDE**, fold along solid lines. Bring folds to broken lines; pin. Baste across raw edge.



10. **STAYSTITCH** neck edge of **YOKE BACK** (8) in direction of arrows. With **RIGHT** sides together and raw edges even, pin upper edge of back to lower edge of yoke back, matching notches. Stitch. Press seam toward yoke, pressing out the yoke. On **OUTSIDE**, edgestitch yoke close to seam.



11. Stitch front to back at shoulder and side edges.

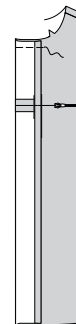


FACING AND PLACKET

12. Press under 5/8" (1.5cm) seam allowance on front edge of right front. Turn pressed edge to **OUTSIDE** along foldline. Baste across upper edges.

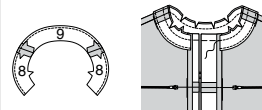


13. Press under 5/8" (1.5cm) seam allowance on front edge of left front. Turn pressed edge to **OUTSIDE** along inner foldline. Baste across upper edges.

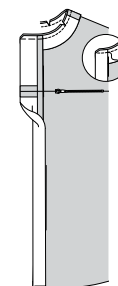


14. Stitch **FRONT FACING** (8) to **BACK FACING** (9) at ends. **EDGE FINISH** unnotched edge.

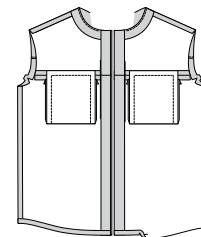
On **OUTSIDE** pin facing to neck edge, matching notches. Stitch. Trim seam; clip curves.



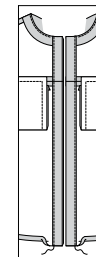
15. Fold outer edge of **LEFT** placket to **OUTSIDE** along remaining outer fold line. Stitch across neck edges through all thicknesses. Trim neck seam and corner.



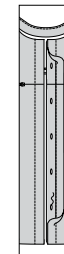
16. **UNDERSTITCH** the facing. Turn facing and placket to **INSIDE**; press, pressing up hem on lower edge of shirt.



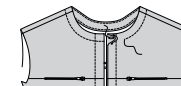
17. On **INSIDE**, edgestitch close to inner edge of right facing and left placket through all thicknesses.



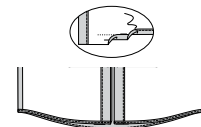
18. Open out outer edge of left placket. Make buttonholes on inner placket at markings.



19. On **OUTSIDE**, stitch 1" (2.5cm) from finished neck edge, catching in facing on **INSIDE**. Make buttonhole at neck edge through all thicknesses.

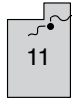


20. To form a **NARROW HEM**, press up hem allowance, turn under raw edge to meet crease. Stitch close to inner pressed edge, continuing stitching across placket and facing.



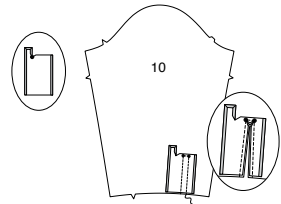
SLEEVE

21. To reinforce inner corner of PLACKET (11) at large dot, stitch along 1/4" (6mm) seam allowance for 1/2" (1.3cm) each side of large dot, as shown. Clip inner corner to stitching at dot.

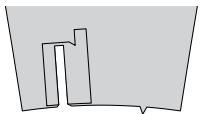


22. Turn under 1/4" (6mm) seam allowance on side and upper end of placket, folding in fullness at corners. Press.

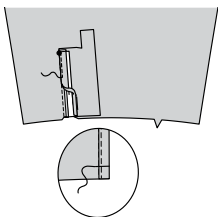
Pin RIGHT side of placket to WRONG side of SLEEVE (10), matching stitching lines. Stitch along stitching lines, pivoting at small dots. Slash between stitching, clipping diagonally to small dots.



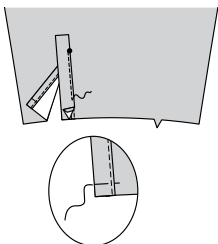
23. Turn placket to OUTSIDE. Press seams toward placket and triangular end up.



24. Fold shorter side of placket along foldline, placing pressed edge over seam. Stitch close to edge, from small dot to lower edge. Baste across lower edge.

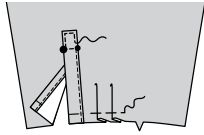


25. Fold remaining side of placket along foldline, placing pressed edge over seam. Stitch close to edge, from small dot to lower edge. Baste across lower edge.

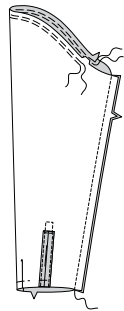


26. Pin upper edge of placket to sleeve. Stitch close to edges and along stitching line, as shown.

To make pleat at lower edge of sleeve, on OUTSIDE, fold along solid lines. Bring fold to broken lines. Baste across lower edge.

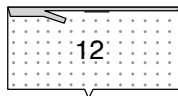


27. Stitch underarm edges of sleeve. EASE upper edge between the notches.



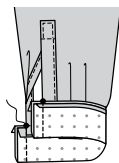
28. Press under 5/8" (1.5cm) seam allowance on unnotched edge of CUFF (12). Trim to 1/4" (6mm).

With RIGHT sides together, pin sleeve to cuff, placing opening edges at small dots. Baste. Stitch. Trim seam.



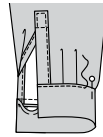
29. Press seam toward cuff, pressing cuff out.

Fold cuff along foldline, with RIGHT sides together, matching small dots. Stitch ends. Trim seam.

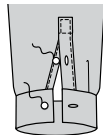


30. Turn cuff; press. On INSIDE, pin pressed edge

of cuff over seam, placing pins on OUTSIDE. On OUTSIDE, edgestitch cuff close to seam, catching in pressed edge of cuff on INSIDE.

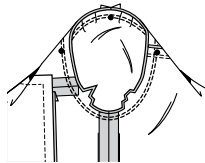


31. Make buttonhole on cuff and placket at small dot. Sew button to cuff and placket at small dot.



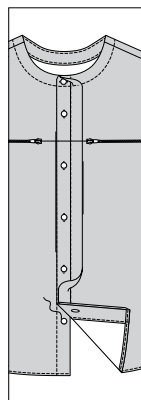
32. Turn sleeve RIGHT side out. Hold shirt WRONG side out with armhole toward you. With RIGHT sides together, pin sleeve to armhole edge with center small dot at shoulder seam, matching underarm seams, notches and remaining small dots. Pull up ease stitches to fit.

To distribute fullness evenly, slide fabric along bobbins threads until there are no puckers or tucks on the seam line. Baste. Stitch. Stitch again 1/8" (3mm) from first stitching. Trim seam below notches close to stitching. Press only the seam allowance, shrinking out fullness.



FINISHING

33. Lap LEFT front over RIGHT front, matching centers. Sew buttons to RIGHT front under buttonholes.

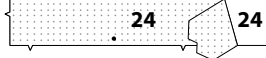
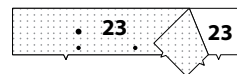
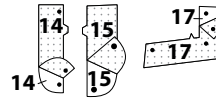


PANTS C

NOTE: Purchased zipper will be too long for opening edge and will be trimmed after installation.

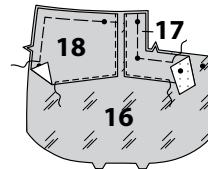
INTERFACING

1. Pin interfacing to WRONG side of RIGHT FLY (14), LEFT FLY FACING (15), POCKET FACING (17), WELT (20), BACK POCKET FACING (22), RIGHT WAISTBAND (23), and LEFT WAISTBAND (24). Fuse in place following manufacturer's directions.

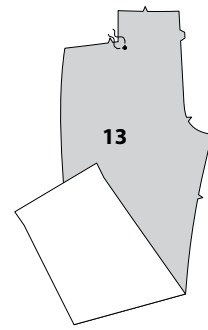


FRONT

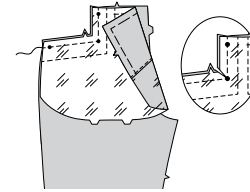
2. Pin WRONG side of POCKET FACING (17) and YOKE FRONT (18) to RIGHT side of SIDE FRONT AND POCKET (16), matching small dots and notches. Baste along seamlines. Stitch pocket facing and yoke front in place 1/8" (3mm) from remaining edges and finish edges with a zigzag stitch.



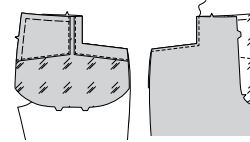
3. To reinforce inner corner of FRONT (13), stitch 1/2" (1.3cm) along seamline each side of the small dot, pivoting with needle in fabric at corner, using small machine stitches.



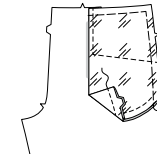
4. With RIGHT sides together and raw edges even, pin pocket to front, matching small dots and notches. Stitch along inner corner on the upper, and side front edges, as shown. Clip inner corner at the small dot, being careful not to clip through stitching. Trim seam.



5. Turn facing and pocket to INSIDE; press. On OUTSIDE, topstitch 1/4" (6mm) from finished edge.

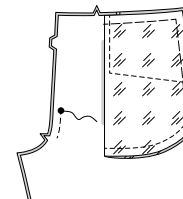


6. On INSIDE, fold pocket along foldline with RIGHT sides together, matching small dots and notches. Stitch pocket edges together along double notched edge. Baste raw edges together.

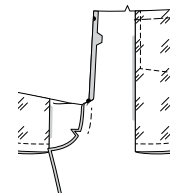


ZIPPER AND FLY OPENING

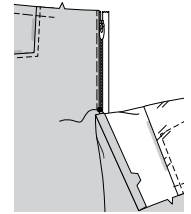
7. Stitch front sections together at center front between large dot and notch.



8. Turn in RIGHT front opening edge along foldline; press.

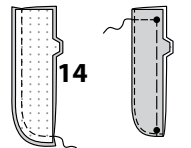


9. Place closed zipper (face up) under right front opening edge, having pressed edge close to zipper teeth and zipper stop at small dot. Using a zipper foot, baste close to pressed edge.

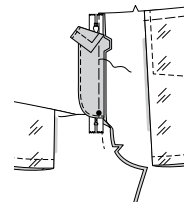


10. With RIGHT sides together, pin RIGHT FLY (14) section with raw edges even. Stitch long, unnotched edge. Trim seam.

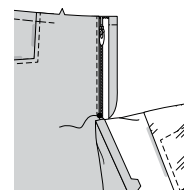
UNDERSTITCH the right fly. Turn. Press. Baste raw edges.



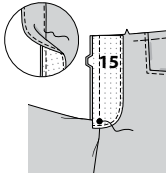
11. On INSIDE, pin right fly to right front opening edge (over zipper), matching notches and small dots, having raw edges even. Baste along previous basting for zipper.



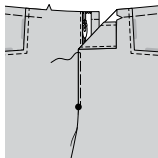
12. On outside, using a zipper foot, stitch close to pressed edge of front through all layers.



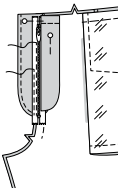
13. Finish outer edge of LEFT FLY FACING (15) with a straight, zigzag, or overlock stitch. Pin fly facing to LEFT front opening edge, matching notches and large dots. Stitch, ending at large dot. Trim seam. **UNDERSTITCH** fly facing. Turn facing to **INSIDE**; press.



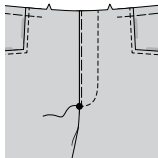
14. Lap LEFT front over RIGHT, matching centers. Baste close to edge through all thicknesses.



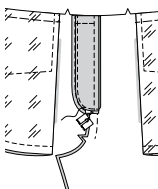
15. Pin right fly out of the way. Open out fly facing. Pin remaining zipper tape to fly facing, keeping LEFT front free. Using a zipper foot, stitch in place close to zipper teeth and along center of zipper tape.



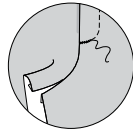
16. Turn facing down. On **OUTSIDE**, stitch LEFT front along stitching line, keeping right fly free.



17. Turn right fly back in place. On **INSIDE**, hand tack fly and facing together at lower edge, as shown. Trim away excess zipper tape even with lower edge of fly, if needed.

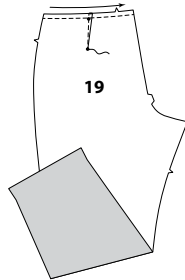


18. On **OUTSIDE**, machine-stitch a bar tack across lower end of fly through all thicknesses.



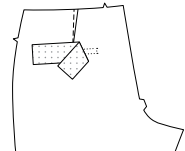
BACK

19. Make **DART** on **BACK** (19); press dart toward center.

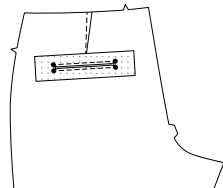


STAYSTITCH upper edge in the direction of the arrow. (Shown only in the first illustration.)

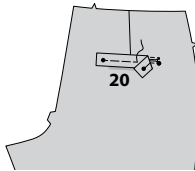
20. To reinforce the back over small dots for pocket, cut a remnant of fusible interfacing 8" (20.5cm) long by 2" (5cm) wide. Center remnant over stitching lines and fuse in place.



21. Stitch along stitching lines for pocket, pivoting with needle in fabric at small dots. To reinforce the corners, stitch inner corners again, using a short machine stitch. Slash along slash line, clipping diagonally to small dots.



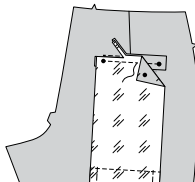
22. Fold **WELT** (20) along foldline with **WRONG** sides together; baste. On **OUTSIDE**, pin welt to back, placing basting along lower stitching line, matching small dots. Baste in place between the small dots.



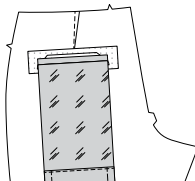
23. Pin **WRONG** side of **BACK POCKET FACING** (22) to **RIGHT** side of **BACK POCKET** (21), matching small dots, with long unmarked edge closest to the foldline. Baste between the small dots and side seamlines. Stitch pocket facing in place 1/8" (3mm) from unmarked edge and finish edges with a zigzag stitch.



24. With **RIGHT** sides together, pin lower edge of back pocket to back along lower stitching line (over welt), matching small dots. Stitch along stitching line between small dots. Trim seam.



25. Turn pocket and triangular ends to inside, turning welt up. Press.

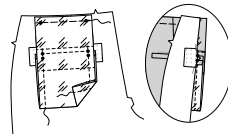


26. On **INSIDE**, fold pocket up with **RIGHT** sides together along foldline.

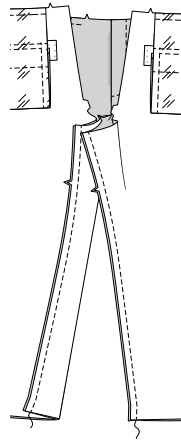
On **OUTSIDE**, turn upper edge of back down along pocket upper stitching line, bringing raw edge of slash up. Pin upper part of pocket to slashed edge at inner small dots with right sides together. Stitch pocket to upper stitching line on back between the small dots.



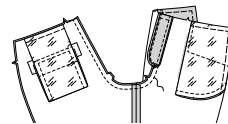
27. Press upper edge of pocket up, matching small dots; baste to upper edge of pants. Stitch side edges of pocket from fold to small dot, catching welt and triangular ends in stitching, keeping back free.



28. Pin front to back at inner leg edges, matching notches. Stitch.



29. With **RIGHT** sides together, pin center edges, matching inner leg seams and notches. Stitch from upper back edge to front, connecting to previous stitching. To reinforce seam, stitch again over first stitching.

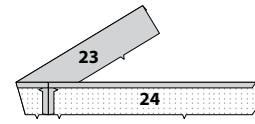


30. Stitch front to back at side edges.

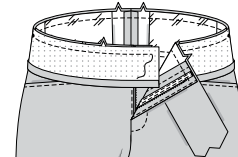


WAISTBAND

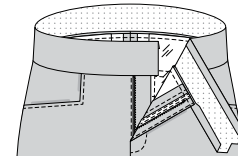
31. Stitch **RIGHT WAISTBAND** (23) to **LEFT WAISTBAND** (24) along center back edges. Press under 5/8" (1.5cm) on long unnotched edge of waistband.



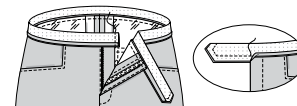
32. With **RIGHT** sides together and raw edges even, pin waistband to pants, matching centers and notches, placing small dots at side seams. (Ends extend beyond opening edges.) Stitch.



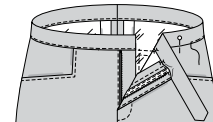
33. Trim seam to 1/4" (6mm). Do not trim seam allowance on **LEFT** end of waistband extension. Press seam toward band, pressing band out.



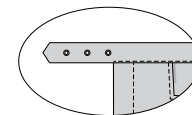
34. Fold band along foldline with **RIGHT** sides together. Stitch across **RIGHT** end of band. Turn **LEFT** end of waistband seam allowance down and open out pressed edge, having raw edges even. Pin. Stitch ends along seamline, being careful not to catch in **LEFT** front opening edge. Trim seams and corners.



35. Turn ends **RIGHT** side out; press. On **INSIDE**, pin pressed edge of band over seam, placing pins on **OUTSIDE**. On **OUTSIDE**, edgestitch band close to seam, catching in press edge of band facing on the **INSIDE**.



36. Apply eyelets to **LEFT** waistband at the small dots following manufacturer's directions.



37. Fold **TAB** (25) in half, bringing notched edges together. Stitch.

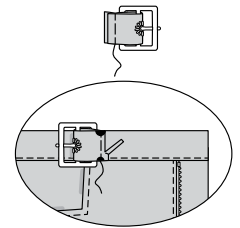


38. Turn tap; press. For buckle prong, make a hole at small dot, using an awl, or embroidery scissors. If you prefer, finish opening edge with a buttonhole stitch.



39. Thread prong through hole on tab. Wrap tab around bar of buckle and fold along foldline bringing ends together. Baste.

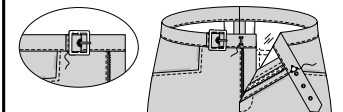
Pin tab to **RIGHT** waistband with **RIGHT** sides together, matching small and large dots, placing basting line along stitching line and buckle end away from center. Stitch along previous basting, securely. Trim seam.



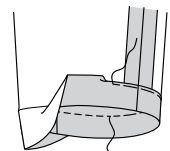
40. Turn buckle tab toward center; press. Topstitch tab 1/4" (6mm) from seam.

On **OUTSIDE**, sew bar centered on **RIGHT** waistband at front edge.

On **INSIDE**, sew hook centered on **LEFT** waistband, at front edge.



41. Press up 1-1/2" (3.8cm) hem allowance. Turn under raw edge 1/4" (6mm). Stitch close to inner pressed edge. If you prefer to create pants, fold leg edges together, matching side and inner leg seams; press.





Congrats!

You've completed your sewing adventure

SHARE YOUR LOOK



Post your pattern and tag us
[@simplicity_creative_group](#) and [#knowMepatterns](#)
for a chance to be featured on our social media.

Look for more PDF patterns at [simplicity.com](https://www.simplicity.com)

Have a question or need help with your sewing project call us at
1-800-782-0323

