



HOLLY DARLING

knowME™

BY MIMI G

ME2112



A



B

Scan QR code for a Sew-Along video tutorial.



@hollydollydarling



Designed and printed in USA

MISSES' DRESS IN TWO LENGTHS AND BELT											Average
Suggested Fabrics: Cotton Blends, Cotton Lawn, Linen Blends, Rayon Blends, Tencel, Viscose Blends.											
Lining: Cotton Blends, Polyester Blends. Interfacing: Lightweight Fusible.											
Notions: A,B: One 22" (56cm) invisible zipper (adjust to fit), one 2" (5cm) belt buckle without prong, optional self-cover buckle kit.											
Sizes	4	6	8	10	12	14	16	18	20	22	
European	30	32	34	36	38	40	42	44	46	48	
BODY MEASUREMENTS: Select pattern size based on body measurements											
Bust	29½	30½	31½	32½	34	36	38	40	42	44	Ins.
Waist	22	23	24	25	26½	28	30	32	34	37	"
Hip-9" below waist	31½	32½	33½	34½	36	38	40	42	44	46	"
Back-neck to waist	15¼	15½	15¾	16	16¼	16½	16¾	17	17¼	17½	"
Interfacing A,B											
20"	1½	1½	1¼	1¼	1¼	1¾	1¾	1½	1½	1½	Yds.
Dress A	45"*	2½	2½	2½	2½	2½	2½	2½	2½	2½	Yds.
60"*	1¾	1¾	1¾	1¾	1¾	2	2	2	2	2	"
Contrast (Godet) 45, 60"* - ¾ yd.											
Lining	45"***	1¾	1¾	1¾	1¾	1¾	1¾	1¾	1¾	2	Yds.
Dress B	45"*	3	3	3	3	3	3¼	3¼	3¾	3½	Yds.
60"*	2½	2½	2½	2½	2½	2½	2½	2½	2½	3	"
Contrast (Godet)	45"*	3¾	3¾	3¾	3¾	3¾	3¾	3¾	3¾	3¾	"
60"*	2½	2½	2½	2½	2½	2½	2½	2½	2½	2½	"
Lining	45"***	2½	2½	2½	2½	2½	2½	3	3	3	"
FINISHED GARMENT MEASUREMENTS (Includes Design and Wearing Ease)											
A,B Bust	32½	33½	34½	35½	37	39	41	43	45	47	Ins.
A,B Waist	33	34	35	36	37½	39½	41½	43½	45½	47½	"
A,B Hip	39	40	41	42	43½	45½	47½	49½	51½	53½	"
Finished back length from base of neck											
Dress A	33¼	33½	33¾	34	34¼	34½	34¾	35	35¼	35½	Ins.
Dress B	49¼	49½	49¾	50	50¼	50½	50¾	51	51¼	51½	"
*with nap **without nap											

Moins Facile

ROBE EN DEUX LONGUEURS ET CEINTURE POUR JEUNES FEMMES

Tissus Conseillés: Cotonnades, Linon de coton, Lin mélangés, Mélanges de rayonnées, Tencel, Mélanges de viscose. Doublure: Cotonnades, Mélanges de polyester. Entoilage: Thermocollant léger.

Mercerie: A,B: 1 fermeture à glissière invisible de 56cm, 1 boucle de 5cm sans ardillon, kit de boucle à couvrir (facultatif).

Tailles	4	6	8	10	12	14	16	18	20	22		
Françaises	32	34	36	38	40	42	44	46	48	50		
Européen	30	32	34	36	38	40	42	44	46	48		

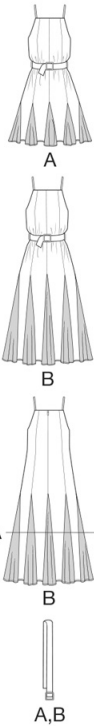
MESURES DU CORPS: Choisissez la taille du patron basée sur les mesures du corps

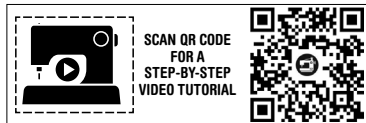
Poitrine	75	78	80	83	87	92	97	102	107	112	cm	
Taille	56	58	61	64	67	71	76	81	87	94	"	
Hanches (23cm au-dessous de la taille)	80	83	85	88	92	97	102	107	112	117	cm	
Dos du cou à la taille	39	39.5	40	40.5	41.5	42	42.5	43	44	44.5	"	
Entoilage A,B	51cm	1.0	1.0	1.1	1.1	1.1	1.3	1.3	1.3	1.4	1.4	m
Robe A	115cm*	1.9	1.9	1.9	1.9	1.9	1.9	2.2	2.2	2.2	2.2	m
	150cm*	1.6	1.7	1.7	1.7	1.7	1.8	1.8	1.8	1.8	1.8	"
Contraste (Godet)	115, 150cm* - 0.8m	"										
Doublure	115cm**	1.5	1.6	1.6	1.6	1.6	1.7	1.7	1.7	1.7	1.8	m
Robe B	115cm*	2.7	2.7	2.7	2.7	2.7	2.7	3.0	3.0	3.0	3.2	m
	150cm*	2.5	2.6	2.6	2.6	2.6	2.6	2.6	2.6	2.6	2.6	"
Contraste (Godet)	115cm*	3.1	3.1	3.1	3.1	3.1	3.1	3.1	3.1	3.1	3.1	"
	150cm*	2.3	2.3	2.3	2.3	2.3	2.3	2.3	2.3	2.3	2.3	"
Doublure	115cm**	2.5	2.6	2.6	2.6	2.6	2.6	2.6	2.6	2.6	2.7	"

MESURES DES VÊTEMENTS FINI (Motif et aisance de port compris)

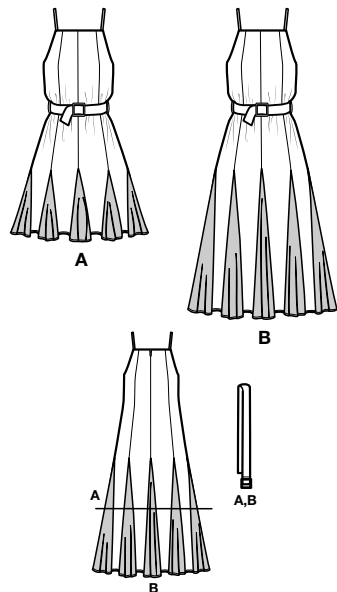
A,B Poitrine	83	85	88	90	94	99	104	109	114	119	m	
A,B Taille	84	86	89	91	95	100	105	110	116	121	"	
A,B Hanches	99	102	104	107	110	116	121	126	131	136	"	
Longueur finie – dos, votre nuque à l'ourlet												
Robe A	84	85	86	86	87	88	88	89	90	90	m	
Robe B	125	126	126	127	128	128	129	130	130	131	"	

\*avec sens \*\*sans sens

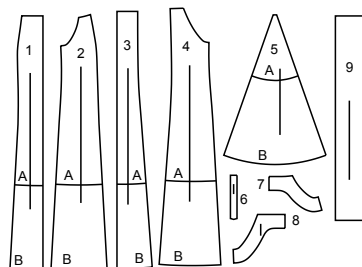




@hollydollydarling

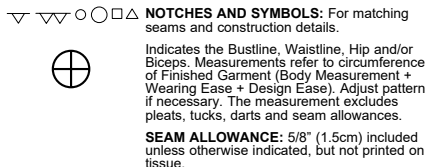


## 9 PATTERN PIECES



- 1 Front-A,B
- 2 Side Front-A,B
- 3 Back-A,B
- 4 Side Back-A,B
- 5 Godet-A,B
- 6 Strap-A,B
- 7 Front Facing-A,B
- 8 Back Facing-A,B
- 9 Belt-A,B

## PATTERN MARKINGS



## ADJUST IF NECESSARY

Lengthen or Shorten at adjustment lines (==) or where indicated on pattern. If substantial length is added, you may need to purchase additional fabric.

**TO SHORTEN:** Crease along adjustment line. Make a fold half the amount needed. Tape in place.

**TO LENGTHEN:** Slash between adjustment lines. Spread amount as needed, keeping edges parallel. Tape over paper.

When Alteration lines are not on tissue, lengthen or shorten at lower edge.

## CUTTING AND MARKING

**SHRINK FABRIC** if not labeled pre-shrunk. Press.

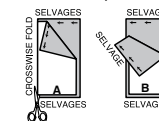
**CIRCLE LAYOUT** for View, Size, Fabric Width.

Use **WITH NAP** layout for fabrics with one-way designs, nap, pile or surface shading. Because most knits have surface shading, a with nap layout is used.

For **DOUBLE THICKNESS (WITH FOLD)** - fold fabric with right sides together.

**\*DOUBLE THICKNESS (WITHOUT FOLD)** - For fabrics with nap, fold fabric crosswise, right sides together. Mark as shown. Cut along crosswise fold of fabric (A). Turn upper layer 180° so arrows go in same direction and place over lower layer, right sides together (B).

For **SINGLE THICKNESS** - place fabric right side up. (For Fur Pile fabrics, place pile side down.)



★ Cut other pieces first, allowing enough fabric to cut this piece. Open fabric. For "Cut 1" pieces, cut piece once on single layer of fabric with piece face up on right side of fabric.

Pattern may have cutting lines for several sizes. Select the proper cutting line or pattern pieces for your size.

Before **CUTTING** place all pieces on fabric according to layout. Pin. (Layouts show approximate position of pattern pieces; position may vary according to your pattern size.) Cut **ACCURATELY**, cutting notches outward.

Before removing pattern, **TRANSFER MARKINGS** and lines of construction to Wrong Side of fabric, using the Pin and Chalk Pencil method or Tracing Paper and Dressmaker Wheel. Markings needed on right side of fabric should be thread traced.

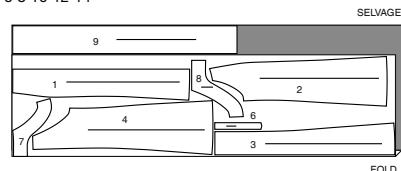
**NOTE:** Broken-line boxes (a| b| c|) in layouts represent pieces cut by measurements provided.

## CUTTING LAYOUTS

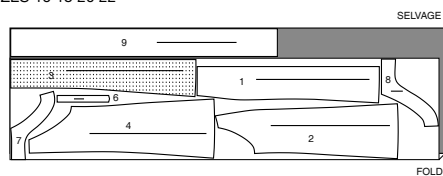
## DRESS A

USE PIECES: 1 2 3 4 6 7 8 9

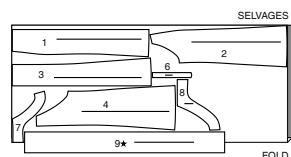
45" (115CM)  
WITH NAP  
SIZES 4 6 8 10 12 14



45" (115CM)  
WITH NAP  
SIZES 16 18 20 22



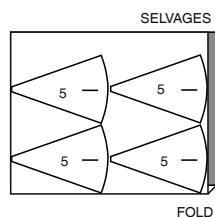
60" (150CM)  
WITH NAP  
ALL SIZES



## CONTRAST A

USE PIECE: 5

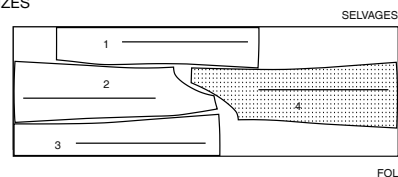
45"/60" (115CM/150CM)  
WITH NAP  
ALL SIZES



## LINING A

USE PIECES: 1 2 3 4

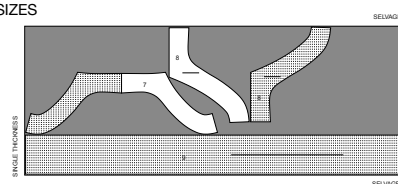
45" (115CM)  
WITHOUT NAP  
ALL SIZES



## INTERFACING A,B

USE PIECES: 7 8 9

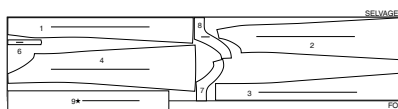
20" (51 CM)  
ALL SIZES



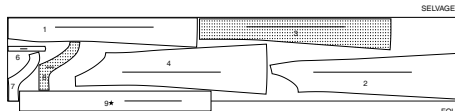
## DRESS B

USE PIECES: 1 2 3 4 6 7 8 9

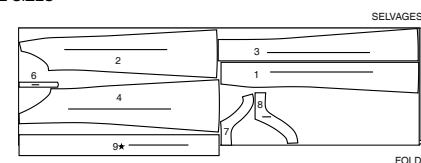
45" (115CM)  
WITH NAP  
SIZES 4 6 8 10 12 14



45" (115CM)  
WITH NAP  
SIZES 16 18 20 22



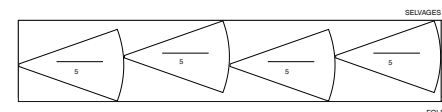
60" (150CM)  
WITH NAP  
ALL SIZES



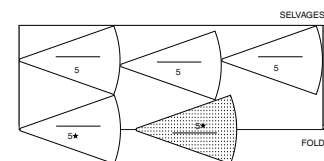
## CONTRAST B

USE PIECE: 5

45" (115CM)  
WITH NAP  
ALL SIZES



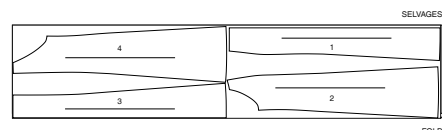
60" (150CM)  
WITH NAP  
ALL SIZES



## LINING B

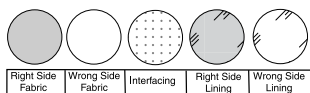
USE PIECES: 1 2 3 4

45" (115CM)  
WITH NAP  
ALL SIZES



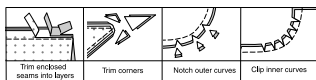
## SEWING INFORMATION

## FABRIC KEY



## SEAM ALLOWANCES

Use 5/8" (1.5cm) seam allowances unless otherwise indicated.



## PIN AND FIT

Pin or baste seams, **RIGHT SIDE TOGETHER**, matching notches. Fit garment before stitching major seams.

## PRESS

Press seam allowances flat; then open unless otherwise stated. Clip where necessary so they lie flat.

## GLOSSARY

Read **General Directions** on page 1 before you begin.

Sewing terms appearing in **BOLD TYPE** in Sewing Instructions are explained below.

**EDGESTITCH** - Stitch close to finished edge or seam.

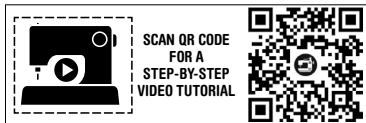
**FINISH** - Stitch 1/4" (6mm) from raw edge and finish with one of the following: (1) Pink OR (2) Overcast OR (3) Turn in along stitching and stitch close to fold OR (4) Overlock.

**SLIPSTITCH** - Slide needle through a folded edge, then pick up a thread of underneath fabric.

**STAYSTITCH** - Stitch 1/8" (3mm) from seamline in seam allowance (usually 1/2" (13mm) from raw edge), unless otherwise directed in Sewing Instructions.

**TOPSTITCH** - On outside, stitch 1/4" (6mm) from edge, seam or previous stitching.

**UNDERSTITCH** - Open out facing or underside of garment; stitch to seam allowance close to seam.



@hollydollydarling

PATTERN PIECES WILL BE IDENTIFIED BY NUMBERS THE FIRST TIME THEY ARE USED.

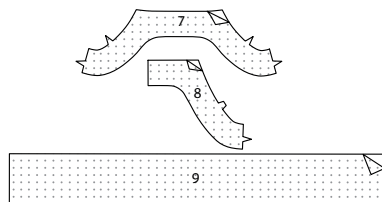
STITCH 5/8" (1.5CM) SEAMS WITH RIGHT SIDES TOGETHER UNLESS OTHERWISE STATED.

## SEWING DIRECTIONS

## DRESS A, B

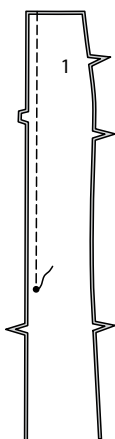
## INTERFACING

1. Fuse INTERFACING to wrong side of each matching fabric section following manufacturer's directions.

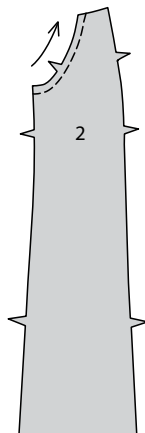


## DRESS FRONT AND BACK

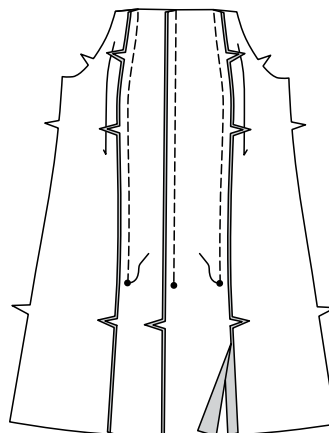
2. Stitch center front seam of FRONT (1) sections above large dot.



3. **STAYSTITCH** armhole edge of each SIDE FRONT (2) section 1/2" (1.3cm) in direction of arrows. Staystitching is shown in first illustration only.



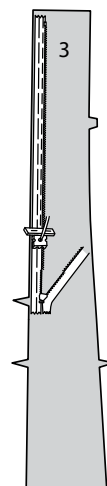
4. Pin side front sections to front. Stitch seams above large dot.



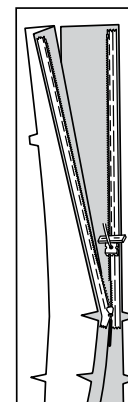
5. **NOTE:** Stitch the invisible zipper using an invisible zipper foot. If the zipper is longer than the zipper opening, adjust after the zipper is inserted.

Open zipper and press tape flat using a cool iron. On **OUTSIDE**, pin **RIGHT** side of zipper face down on **RIGHT** side of **BACK** (3) zipper opening.

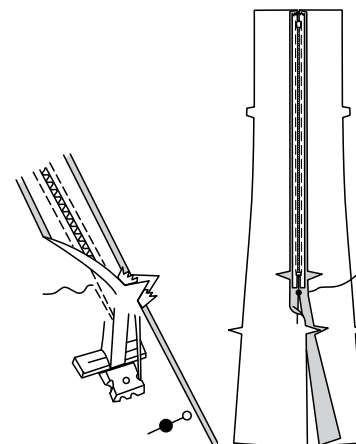
Have the coil along the seam line, the tape within the seam allowance and the top stop 3/4" (2cm) below upper edge, as shown. Hand-baste along center of tape. Position zipper foot at top of zipper with **RIGHT** groove of foot over coil. Stitch along tape to the notch. Back-stitch to reinforce.



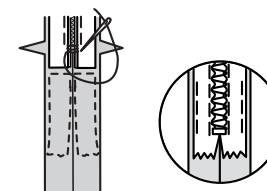
6. Pin remaining half of zipper to **LEFT** side of the zipper opening in same manner. Make sure upper and lower edges of back are even. Hand-baste along center of tape. Position zipper foot at the top of the zipper with **LEFT** groove over the coil. Stitch along tape to notch. Back-stitch to reinforce.



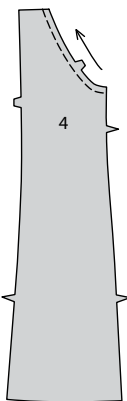
7. Close zipper and check that it is invisible from the **OUTSIDE**. Pull the free ends of the zipper tape away from the seam allowance. Pin remaining center back seam together below zipper. Position zipper foot all the way to the **LEFT** so the needle goes down through the outer notch of the foot. Start stitching seam 1/4" (6mm) above lowest stitch and slightly to the **LEFT**.



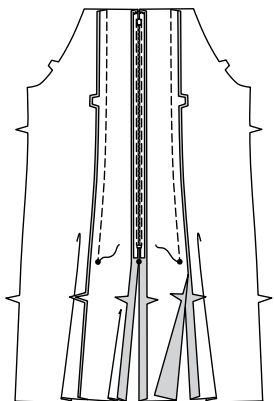
8. If the zipper is longer than the opening, using a strong thread, hand-sew a few small stitches across ends of coils at end of opening. Trim away lower end of zipper tape to within 5/8" (1.5cm) of hand-stitches. If you prefer, open out each seam allowance at end of zipper and stitch tape to seam allowance.



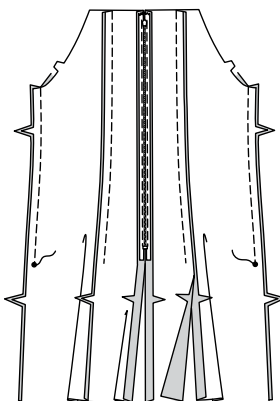
- 9. STAYSTITCH** armhole edge of SIDE BACK (4) 1/2" (6mm) from raw edges in direction of arrows.



- 10.** Pin side back sections to back. Stitch seams above large dot.



- 11.** Stitch front to back at sides above large dot.



## STRAPS

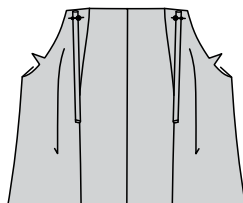
- 12.** Fold STRAP (6) in half, lengthwise, with RIGHT sides together. Stitch in a 1/4" (6mm) seam, leaving ends open.



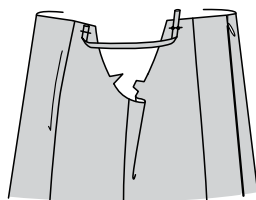
- 13.** Turn strap RIGHT side out; press.



- 14.** On OUTSIDE, baste straps to upper edge of front, matching small and large dots.

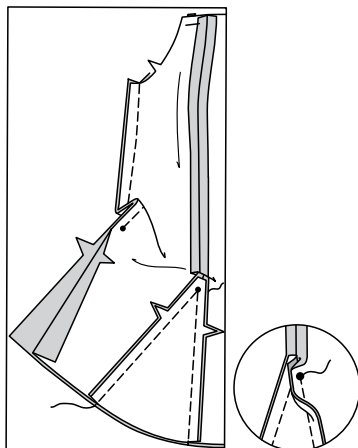


- 15.** Pin straps to upper edge of back, matching small dots. The straps have an extra allowance at the back edge for adjustment. Try on dress and adjust length of straps so that they fit comfortably. Baste. If necessary, trim raw edge of straps even with upper edge of back.

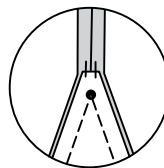


## GODETS

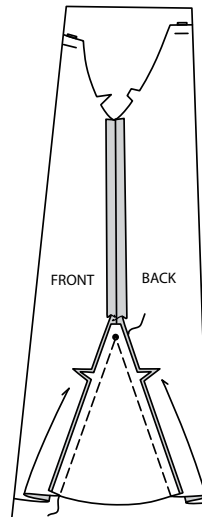
- 16.** With RIGHT sides together, pin one GODET (5) section to open edges on one side of front, matching large dots and having raw edges even. Stitch seams, breaking and reinforcing stitching at large dot.



- 17.** Press seams open. Hand tack upper edge of godet to seam allowance above large dot.

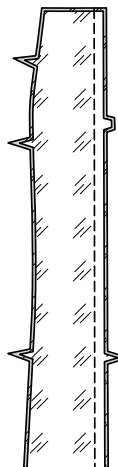


- 18.** Stitch remaining godets to remaining opening edges of front, back, and side seams in same manner.

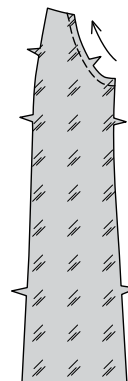


## LINING AND FACING

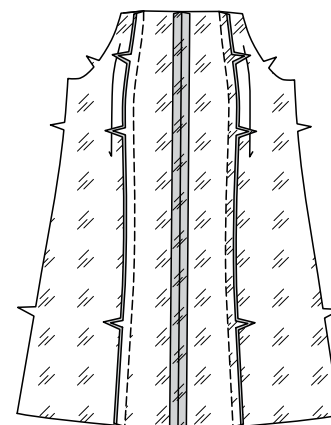
- 19. NOTE:** If you haven't already done so, trim away 1" (2.5cm) on lower edge of each lining section. Large dots are for dress only-disregard for lining. Stitch center front seam of front LINING sections.



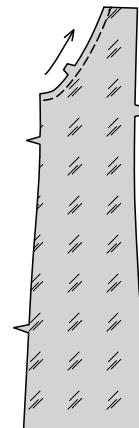
- 20. STAYSTITCH** armhole edge of each side front LINING section 1/2" (1.3cm) in direction of arrows.



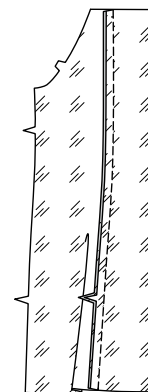
- 21.** Stitch side front sections to front.



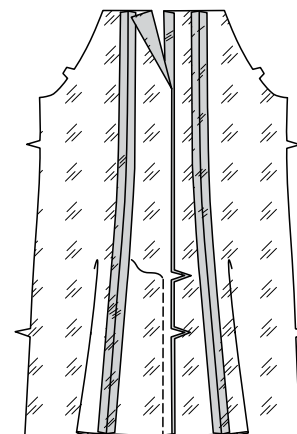
- 22. STAYSTITCH** armhole edge of each side back LINING section 1/2" (1.3cm) in direction of arrows.



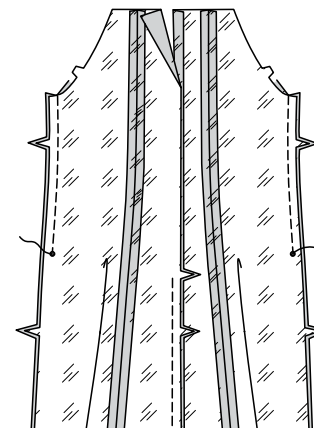
- 23.** Stitch side back to back.



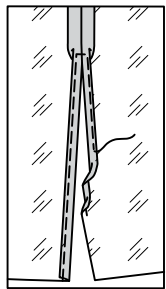
- 24.** Stitch center back seam of back LINING sections below upper notch, as shown.



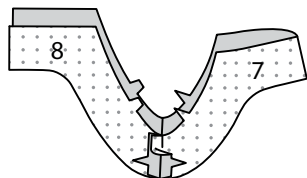
- 25.** Stitch side seams of lining sections above small dot.



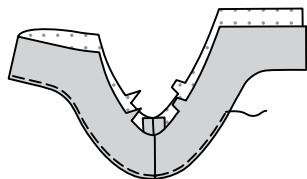
**26.** To make side slits, press under 5/8" (1.5cm) on raw side edges. Press under 1/4" (6mm) on raw edge. **EDGESTITCH** inner edge, squaring stitching above opening.



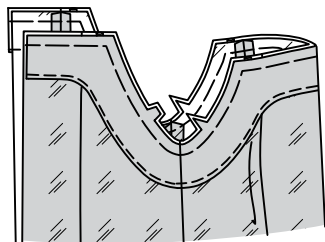
**27.** Stitch of FRONT FACING (7) and BACK FACING (8) sections together at sides.



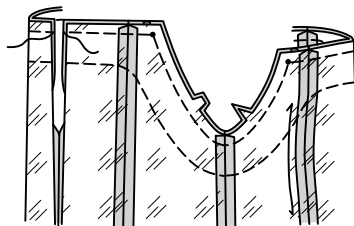
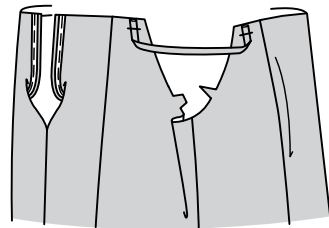
**28.** **FINISH** lower edge of facing.



**29.** With RIGHT sides of facing and lining facing up towards you, pin facing over lining, matching centers and side seams, having raw edges even. Baste upper and armhole edges together. **TOPSTITCH** or **EDGESTITCH** finished edge of facing through all thickness. This whole section will now be referred to as the lining.



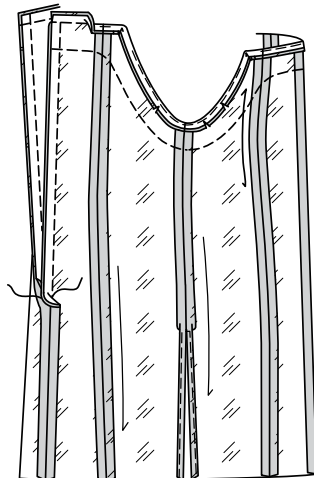
**30.** Open out center back opening edges of dress, rolling zipper teeth away from opening edge. With RIGHT sides together, pin LINING to dress along upper and armhole edges, matching centers and side seams, having raw edges even. Stitch upper and armhole edges, pivoting at small dots. Trim seam and corners; clip curves.



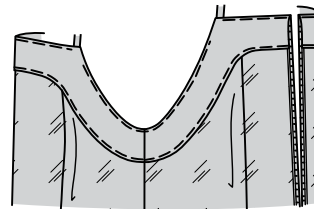
**31.** **UNDERSTITCH** to within 2" (5cm) of back edges by pressing lining and seam away from dress, stitching through lining and seam allowances close to seam and as far as possible.



**32.** Pin back opening edges of lining and dress together. Using an adjustable zipper foot, stitch 1/2" (1.3cm) from back edges, keeping zipper teeth free. Trim corners. Do not trim center back edges.



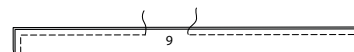
**33.** Turn lining and back edges to INSIDE, turning out straps and rolling zipper teeth back in place; press.



### BELT

**NOTE:** For covered buckle, follow manufacturer's directions, using a fabric remnant.

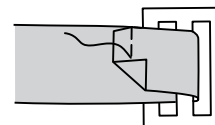
**34.** Fold BELT (9) in half, lengthwise, with RIGHT sides together. Stitch, leaving an opening to turn. Trim seam and corners.



**35.** Turn belt; press. **SLIPSTITCH** opening edges together.

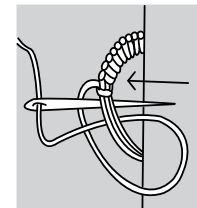


**36.** Slip end of belt through buckle, turning end of belt to underside along fold line. **TOPSTITCH** end securely in place, as shown.

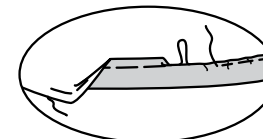


### FINISHING

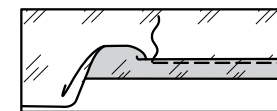
**37.** Try on dress and mark side seams for belt loop. Make thread loops at side seams wide enough for belt to pass through.



**38.** Stitch 1/4" (6mm) from lower edge of dress, using long machine stitches. Turn up 5/8" (1.5cm) hem, turning in 1/4" (6mm) on raw edge. Pull thread to ease in fullness. Stitch. Press. **EDGESTITCH** inner edge of hem, as shown.



**39.** Turn up 5/8" (1.5cm) hem on lower edge of front LINING, turning in 1/4" (6mm) on raw edge. Press. **EDGESTITCH** inner edge of hem. Hem lower edge of back LINING in same manner.





# Congrats!

You've completed your sewing adventure

---

## SHARE YOUR LOOK



Post your pattern and tag us  
[@simplicity\\_creative\\_group](#) and [#knowMepatterns](#)  
for a chance to be featured on our social media.

Look for more PDF patterns at [simplicity.com](https://www.simplicity.com)

Have a question or need help with your sewing project call us at  
1-800-782-0323



KnowMe ©2024 a division of IG Design Group Americas Inc. • Atlanta, GA 30342 USA [www.thedesigngroup.com](http://www.thedesigngroup.com) • All Rights Reserved. [www.mccall.com](http://www.mccall.com) • Made in the U.S.A. Fabriqué aux États-Unis.  
To be used for individual private home use only and not for commercial or manufacturing purposes. • A usage privé seulement et non à des fins commerciales ou de production en série. • Para uso privado solamente, no se puede utilizar con propósitos de comercialización o de producción en serie.