



HANDMADE MILLENNIAL  
knowME™  
BY MIMI G

ME2111



A



B

Scan QR code  
for a Sew-Along  
video tutorial.



@handmademillennial



Designed and  
printed in USA

MISSES' DRESS IN TWO LENGTHS

**Suggested Fabrics:** A,B (Fabric 1): Pleated Chiffon, Pleated Fabric, Pleated Satin. **Underbodice** A,B (Fabric 2): Cotton Types, Crepe, Lightweight to Medium weight Muslin. **Lining:** Polyester Blends. **Interfacing:** Medium weight fusible. **NOTE:** Lining fabric will show.

**Notions:** A,B: 2½yds. (2.2m) of ¾" (1cm) featherweight boning, one 14" (36cm) invisible zipper, 1¼ yds. (1.2m) of 1" - 1¼" (2.5cm - 3cm) silicone gripper elastic, ¾ yd. (0.7m) of ¾" (1cm) silicone gripper elastic, one hook and eye, 1 yd. (0.9m) of ¼" (6mm) twill tape (for hanging straps).

Sizes	6	8	10	12	14	16	18	20	22	24
European	32	34	36	38	40	42	44	46	48	50

BODY MEASUREMENTS: Select pattern size based on body measurements													
Bust	30½	31½	32½	34	36	38	40	42	44	46	Ins.		
Waist	23	24	25	26½	28	30	32	34	37	39	"		
Hip-9" below waist	32½	33½	34½	36	38	40	42	44	46	48	"		
Back-neck to waist	15½	15¾	16	16¼	16½	16¾	17	17¼	17½	17¾	"		

Underbodice A,B													
45"*	¾	¾	¾	¾	¾	¾	1	1½	1½	1½	Yds.		
60"*	¾	¾	¾	¾	¾	¾	¾	¾	¾	¾	1	"	
Interfacing	20"	17" yds.											
Dress A	60"*	1¼	1¼	1¼	1¾	1¾	1¾	1¾	1½	1½	1½	Yds.	
Lining	45"***	1¼	1¼	1¼	1¾	1¾	1¾	1¾	1½	1½	1½	"	
Dress B	60"*	1¼	1¼	1¾	1¾	1½	1½	1¾	1¾	1¾	1¾	Yds.	
Lining	45"***	2¾	2¾	2¾	2¾	2¾	2½	2½	2½	2½	2½	"	

FINISHED GARMENT MEASUREMENTS (Includes Design and Wearing Ease)													
A,B Bust	32½	33½	34½	36	38	40	42	44	46	48	Ins.		
A,B Waist	26	27	28	29½	31½	33½	35½	37½	39½	41½	"		
A,B Hip	36½	37½	38½	40	42	44	46	48	50	52	"		
Finished back length from base of neck													
Dress A	34½	34¾	35	35¼	35½	35¾	36	36¼	36½	36¾	Ins.		
Dress B	56½	56¾	57	57¼	57½	57¾	58	58¼	58½	58¾	"		

\*with nap \*\*without nap

ROBE EN DEUX LONGUEURS POUR JEUNES FEMMES

**Tissus Conseillés:** A,B (Tissu 1): Mousseline plissée, Tissu plissé, Satin plissé. **Dessous de corsage** A,B (Tissu 2): Types coton, Crêpe, Mousseline de poids léger à moyen. **Doublure:** Mélanges de polyester. **Entoilage:** Thermocollant de poids moyen. **NOTE:** Le tissu de doublure sera visible.

**Merçerie:** A,B: 2.2m de baleine de poids très léger de 1cm, 1 fermeture à glissière invisible de 36cm, 1.2m d'élastique antiglisce en silicone de 2.5cm - 3cm, 0.7m d'élastique antiglisce en silicone de 1cm, 1 agrafe, 0.9m de talonnette de coton de 6mm (pour des bretelles d'accrochage).

Tailles	6	8	10	12	14	16	18	20	22	24
Françaises	34	36	38	40	42	44	46	48	50	52
Européen	32	34	36	38	40	42	44	46	48	50

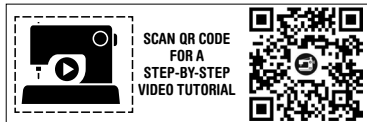
MESURES DU CORPS: Choisissez la taille du patron basée sur les mesures du corps													
Poitrine	78	80	83	87	92	97	102	107	112	117	cm		
Taille	58	61	64	67	71	76	81	87	94	99	"		
Hanches (23cm au-dessous de la taille)													
	83	85	88	92	97	102	107	112	117	122	cm		
Dos du cou à la taille	39.5	40	40.5	41.5	42	42.5	43	44	44.5	45	"		

Dessous de corsage A,B													
115cm*	0.8	0.8	0.8	0.8	0.8	0.8	0.8	0.9	1.0	1.0	m		
150cm*	0.6	0.6	0.6	0.6	0.7	0.7	0.7	0.7	0.8	0.8	"		
Entoilage	51cm	1.7m											
Robe A	150cm*	1.1	1.1	1.1	1.1	1.1	1.3	1.3	1.4	1.4	1.4	m	
Doublure	115cm**	1.0	1.1	1.1	1.1	1.3	1.3	1.3	1.4	1.4	1.4	"	
Robe B	150cm*	1.1	1.1	1.3	1.3	1.3	1.4	1.4	1.5	1.6	1.6	m	
Doublure	115cm**	2.2	2.2	2.2	2.2	2.2	2.3	2.3	2.3	2.3	2.3	"	

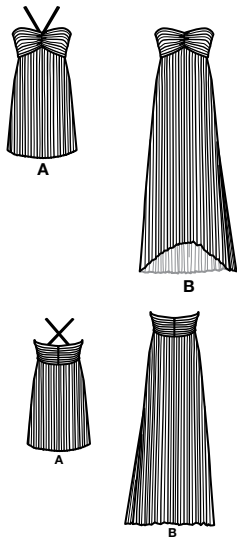
MESURES DES VÊTEMENTS FINI (Motif et aisance de port compris)													
A,B Poitrine	83	85	88	91	97	102	107	112	117	122	cm		
A,B Taille	66	69	71	75	80	85	90	95	100	105	"		
A,B Hanches	93	95	98	102	107	112	117	122	127	132	"		
Longueur finie – dos, votre nuque à l'ourlet													
Robe A	88	88	89	90	90	91	91	92	93	93	cm		
Robe B	144	144	145	145	146	147	147	148	149	149	"		

\*avec sens \*\*sans sens

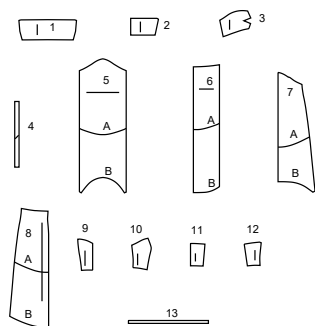




@handmademillennial

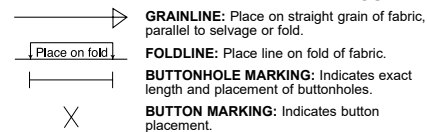


## 13 PATTERN PIECES



- 1 BODICE FRONT - A,B
- 2 BODICE BACK - A,B
- 3 BODICE FRONT LINING - A,B
- 4 STRAP - A
- 5 SKIRT FRONT - A,B
- 6 SKIRT BACK - A,B
- 7 SKIRT FRONT LINING - A,B
- 8 SKIRT BACK LINING - A,B
- 9 UNDERBODICE FRONT - A,B
- 10 UNDERBODICE SIDE FRONT - A,B
- 11 UNDERBODICE BACK - A,B
- 12 UNDERBODICE SIDE BACK - A,B
- 13 GUIDE FOR ELASTIC - A,B

## PATTERN MARKINGS



**NOTCHES AND SYMBOLS:** For matching seams and construction details.

Indicates the Bustline, Waistline, Hip and/or Biceps. Measurements refer to circumference of Finished Garment (Body Measurement + Wearing Ease + Design Ease). Adjust pattern if necessary. The measurement excludes pleats, tucks, darts and seam allowances.

**SEAM ALLOWANCE:** 5/8" (1.5cm) included unless otherwise indicated, but not printed on tissue.

## ADJUST IF NECESSARY

Lengthen or Shorten at adjustment lines (==) or where indicated on pattern. If substantial length is added, you may need to purchase additional fabric.

**TO SHORTEN:** Crease along adjustment line. Make a fold half the amount needed. Tape in place.

**TO LENGTHEN:** Slash between adjustment lines. Spread amount as needed, keeping edges parallel. Tape over paper.

When Alteration lines are not on tissue, lengthen or shorten at lower edge.

## CUTTING AND MARKING

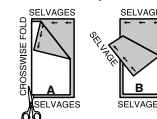
★ Cut other pieces first, allowing enough fabric to cut this piece. Open fabric. For "Cut 1" pieces, cut piece once on single layer of fabric with piece face up on right side of fabric.

Pattern may have cutting lines for several sizes. Select the proper cutting line or pattern pieces for your size.

Before **CUTTING** place all pieces on fabric according to layout. Pin. (Layouts show approximate position of pattern pieces; position may vary according to your pattern size.) Cut **ACCURATELY**, cutting notches outward.

Before removing pattern, **TRANSFER MARKINGS** and lines of construction to Wrong Side of fabric, using the Pin and Chalk Pencil method or Tracing Paper and Dressmaker Wheel. Markings needed on right side of fabric should be thread traced.

**NOTE:** Broken-line boxes (a! b! c!) in layouts represent pieces cut by measurements provided.



**SHRINK FABRIC** if not labeled pre-shrunk. Press.

**CIRCLE LAYOUT** for View, Size, Fabric Width.

Use **WITH NAP** layout for fabrics with one-way designs, nap, pile or surface shading. Because most knits have surface shading, a with nap layout is used.

For **DOUBLE THICKNESS (WITH FOLD)** - fold fabric with right sides together.

**\*DOUBLE THICKNESS (WITHOUT FOLD)** - For fabrics with nap, fold fabric crosswise, right sides together. Mark as shown. Cut along crosswise fold of fabric (A). Turn upper layer 180° so arrows go in same direction and place over lower layer, right sides together (B).

For **SINGLE THICKNESS** - place fabric right side up. (For Fur Pile fabrics, place pile side down.)

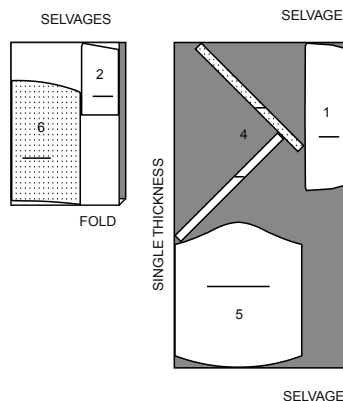
## CUTTING LAYOUTS

**NOTE:** FOR BEST RESULTS, BASTE PLEATS IN PLACE BEFORE LAYING OUT PLEATED FABRIC.

## DRESS A

USE PIECES: 1 2 4 5 6

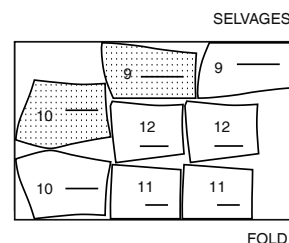
60" (150 CM)  
WITH NAP  
ALL SIZES



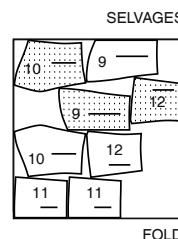
## UNDERBODICE A,B

USE PIECES: 9 10 11 12

45" (115 CM)  
WITH NAP  
ALL SIZES



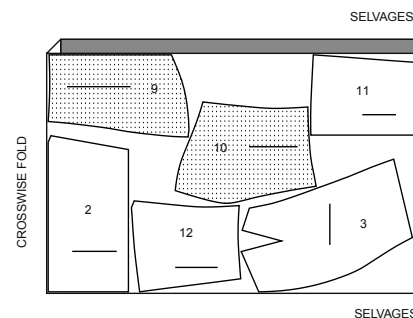
60" (150 CM)  
WITH NAP  
ALL SIZES



## INTERFACING A,B

USE PIECES: 2 3 9 10 11 12

20" (51 CM)  
ALL SIZES

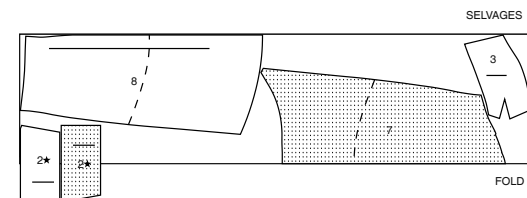


**NOTE:** DASHED LINE SHOWN ON PATTERN PIECES IN CUTTING LAYOUTS INDICATES CUTTING LINE FOR SHORTER LENGTH.

## LINING A,B

USE PIECES: 2 3 7 8

45" (115 CM)  
WITHOUT NAP  
ALL SIZES

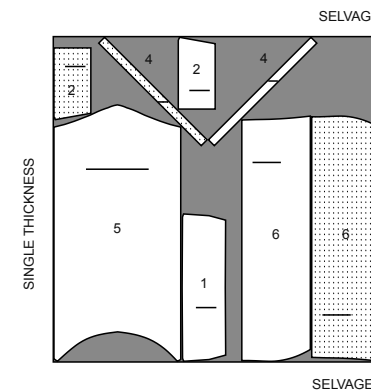


**NOTE:** FOR BEST RESULTS, BASTE PLEATS IN PLACE BEFORE LAYING OUT PLEATED FABRIC.

## DRESS B

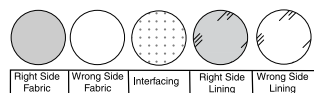
USE PIECES: 1 2 4 5 6

60" (150 CM)  
WITH NAP  
ALL SIZES



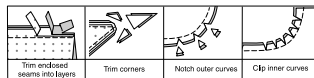
## SEWING INFORMATION

## FABRIC KEY



## SEAM ALLOWANCES

Use 5/8" (1.5cm) seam allowances unless otherwise indicated.



## PIN AND FIT

Pin or baste seams, **RIGHT SIDE TOGETHER**, matching notches. Fit garment before stitching major seams.

## PRESS

Press seam allowances flat; then open unless otherwise stated. Clip where necessary so they lie flat.

## GLOSSARY

Read **General Directions** on page 1 before you begin.

Sewing terms appearing in **BOLD TYPE** in Sewing Instructions are explained below.

**DART** – To make dart, with **RIGHT** sides together, fold the fabric through the center of the dart, bringing broken lines and small dots together. On **INSIDE**, place pins at **RIGHT** angles to the broken lines. Stitch the dart from wide end to point.

**TIP**– To prevent a “bubble” at the point, make the last few stitches right on the fold and leave the thread ends long enough to tie a knot. **DO NOT** back-stitch at the point.

Press the dart flat along the stitching to “blend” the stitches, then press dart as indicated in the Sewing Directions.

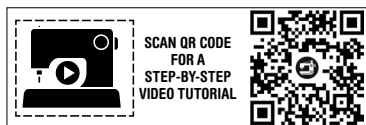
**DART SEAM** – To stitch dart seam, with **RIGHT** sides together, bring broken lines together carefully matching small dots. On **INSIDE**, place pins at **RIGHT** angles to the broken lines. Stitch the dart seam from outer edge to the point.

**TIP**– To prevent a “bubble” at the point, make the last few stitches right on the fold and leave the thread ends long enough to tie a knot. **DO NOT** back-stitch at the point.

Press the dart seam flat along the stitching to “blend” the stitches, then press dart as indicated in the Sewing Directions.

**EASE** – Loosen needle tension slightly. With **RIGHT** side up, stitch 5/8" (1.5cm) from cut edge using a long stitch. Stitch again 1/4" (6mm) from the first stitching within the seam allowance.

**STAYSTITCH** – Stitch 1/2" (1.3cm) from cut edge in direction of arrows. This stitching stays in permanently to prevent stretching on curved edges. (Shown only in the first illustration.)



@handmademillennial

PATTERN PIECES WILL BE IDENTIFIED BY NUMBERS THE FIRST TIME THEY ARE USED.

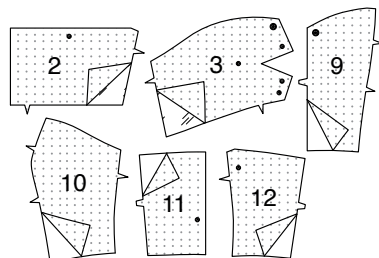
STITCH 5/8" (1.5CM) SEAMS WITH **RIGHT SIDES TOGETHER** UNLESS OTHERWISE STATED.

## SEWING DIRECTIONS

## DRESS A, B

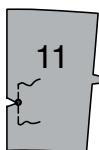
## INTERFACING

1. Pin interfacing to **WRONG** side of **BODICE BACK** (2) lining sections, **BODICE FRONT LINING** (3), **UNDERBODICE FRONT** (9), **UNDERBODICE SIDE FRONT** (10), **UNDERBODICE BACK** (11), and **UNDERBODICE SIDE BACK** (12). Fuse in place following manufacturer's directions.

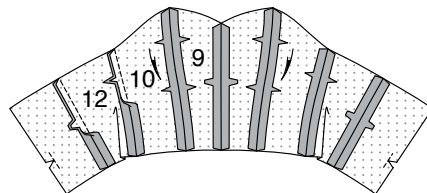


## UNDERBODICE

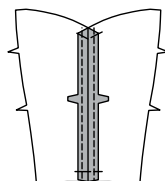
2. To reinforce back edges of all **UNDERBODICE BACK** (11) sections, stitch along seamline for about 1" (2.5cm) each side of small dot. Clip to stitching at small dot.



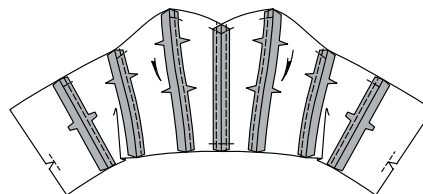
3. FOR INTERFACED UNDERBODICE SECTIONS – Stitch **UNDERBODICE FRONT** (9) to **UNDERBODICE SIDE FRONT** (10) sections. Stitch underbodice front sections together at center front. Stitch underbodice back to **UNDERBODICE SIDE BACK** (12) sections. Stitch underbodice back to underbodice front at side edges. Press seams open.



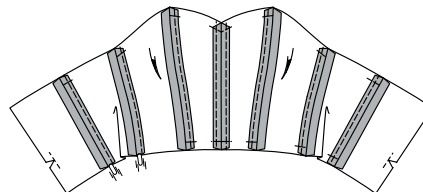
4. FOR REMAINING UNDERBODICE SECTIONS – Stitch underbodice front sections together at center. Press seams open. Stitch a scant 3/8" (1cm) from seam. Baste across upper and lower edges over seam allowances.



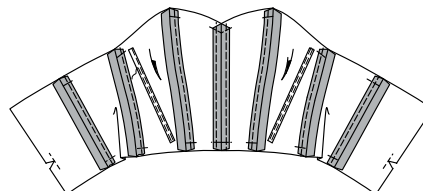
5. Stitch remaining underbodice sections together in the same manner as interfaced underbodice. Press seams open. To make channels for boning, stitch a scant 3/8" (1cm) from seam over the inner seam allowance, (the allowance pressed toward front). Baste across upper edge of channels along seamline.



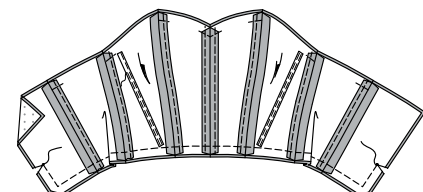
6. Cut a piece of boning the length of the stitched casing, excluding upper and lower seam allowances. Remove boning from casing. Trim 1/4" (6mm) from each end, curving ends, as shown. Insert boning into channels. Baste across lower edge of underbodice, being careful not to catch in boning.



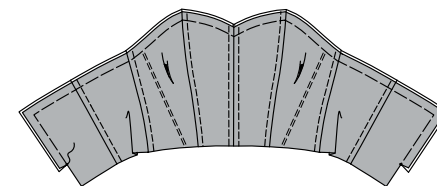
7. Cut a piece of boning the length of each remaining boning channel on side front sections. Do not remove from casing. Center boning between broken lines. Stitch in place along long edges.



8. With **RIGHT** sides together and raw edges even, pin interfaced underbodice to channeled underbodice. Stitch lower and back edges between the clips. Trim seam and corners.

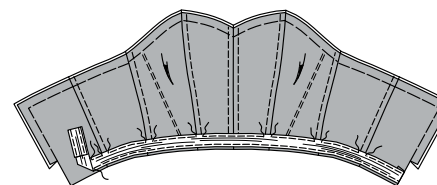
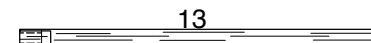


9. Turn underbodice; press. Baste raw edges together. (The channeled underbodice will be visible on the **INSIDE** of dress when complete.)

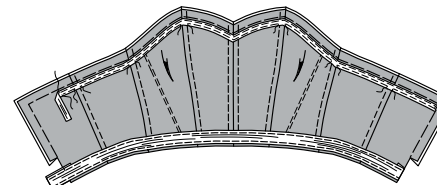


10. Cut a piece of 1" (2.5cm) to 1-1/4" (3.2cm) non-slip elastic the length of the **GUIDE FOR ELASTIC** (13). Transfer markings. Turn under end along foldline; press. Edgestitch close to both long edges between the fold and center back marking. Turn under remaining end at center back marking; press.

Pin elastic to lower edge of underbodice (channeled side) with lower edges even, matching centers. Edgestitch in place close to lower edge of elastic. Edgestitch close to upper edge of elastic, breaking stitching between boning channels.

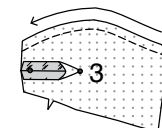


11. Pin 3/8" (1cm) non-slip elastic to upper edge of underbodice (channeled side) a generous 5/8" (1.5cm) from raw edge. Edgestitch in place close to upper edge of elastic. Edgestitch close to lower edge of elastic, breaking stitching between boning channels.

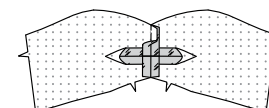


## BODICE

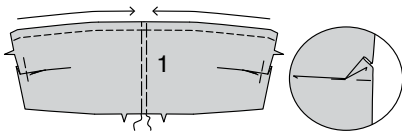
12. **STAYSTITCH** upper edge of **BODICE FRONT LINING** (3) in the direction of the arrow. (Shown only in the first illustration.) Stitch **DART SEAM** in bodice front lining. Press seam open.



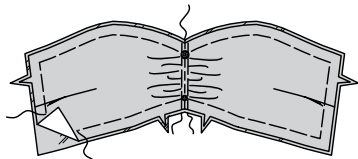
13. With **RIGHT** sides together and raw edges even, stitch center front edges of bodice front lining. Press seam open.



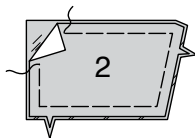
**14.** On OUTSIDE, **STAYSTITCH** upper edge of BODICE FRONT (1) in the direction of the arrows. (Shown only in the first illustration.) To gather at center front, loosen needle tension slightly. Stitch  $1/8"$  (3mm) from each side of center, using a long machine stitch. To make pleats, fold bodice along solid lines. Bring folds to broken lines. Baste across seamlines.



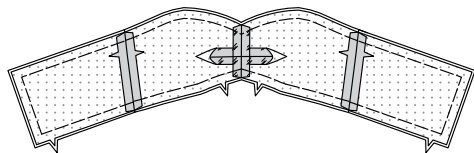
**15.** Pin WRONG side of bodice front to the RIGHT side of bodice front lining with raw edges even, matching centers, small dots, large dots, and notches, pulling up gathering stitches to fit. Stitch along center front gathering line. Baste raw edges together. Remove off center gathering stitches.



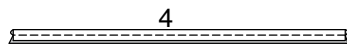
**16.** Pin WRONG side of BODICE BACK (2) to the RIGHT side of bodice back lining with raw edges even. Baste raw edges together.



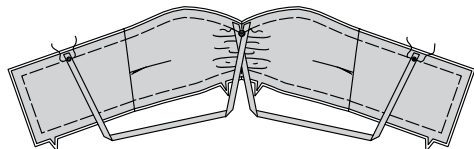
**17.** With RIGHT sides together and raw edges even, pin bodice front to bodice back at side edges. Stitch. Press seams open.



**18.** Fold STRAP (4) in half, lengthwise with RIGHT sides together. Stitch long edge in a  $3/8"$  (1cm) seam. Trim seam.



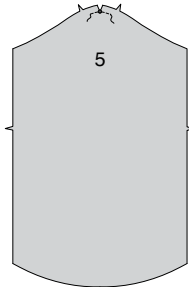
**19.** Turn strap; press. On OUTSIDE, pin straps to bodice, placing straps side by side at center front, matching large dots. Pin RIGHT strap to LEFT back, and LEFT strap to RIGHT back, matching small dots on bodice back, as shown. Baste ends in place.



## SKIRT

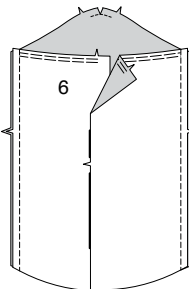
**NOTE:** Dress skirt is unhemmed.

**20.** To reinforce upper edge of SKIRT FRONT (5) at the small dot, stitch along seam line for about  $1"$  (2.5cm) each side of small dot, stitching through dot, as shown. Clip to stitching at dot.

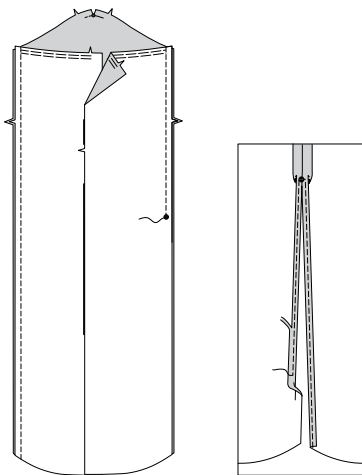


**21.** To **EASE** upper edge of SKIRT BACK (6) between notch and side seam allowance, stitch along seamline using a long stitch. Stitch again  $1/4"$  (6mm) from first stitching within the seam allowance.

**FOR VIEW A** – Stitch skirt front to skirt back at side edges. Press seam open.

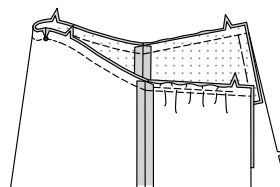


**22. FOR VIEW B** – Stitch skirt front to skirt back along RIGHT side edges, and along LEFT side edge from upper edge to large dot, back-stitching at dot to reinforce the seam. Press seam open, and slit seam allowances under. Edgestitch close to pressed edges of slit. Trim seam allowance of slit to  $1/4"$  (6mm).



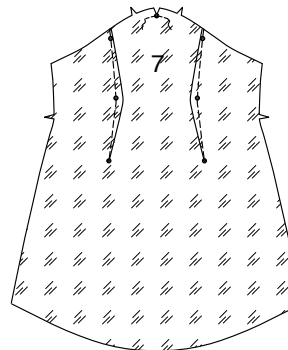
## CONTINUE AS FOLLOWS FOR BOTH VIEWS

**23.** With RIGHT sides together and raw edges even, pin skirt to bodice, matching centers, small dots, seams, and notches, pulling up eases stitches to fit. Stitch.

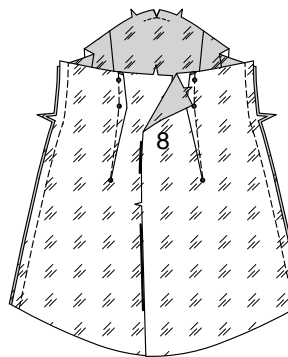


**24.** To reinforce upper edge of SKIRT FRONT LINING (7) at the small dot, stitch along seam line for about  $1"$  (2.5cm) each side of small dot, stitching through dot, as shown. Clip to stitching at dot.

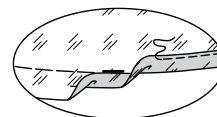
Make **DART** in skirt front lining. Press dart toward center.



**25. FOR VIEW A** – Make **DART** in SKIRT BACK LINING (8). Press dart toward back. Stitch skirt front to skirt back at side edges. Press seam open.

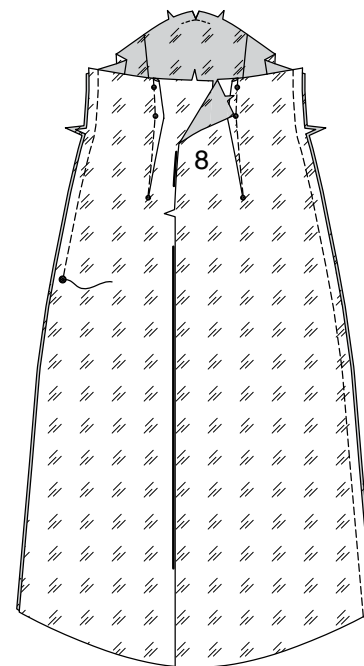


**26.** Machine-baste  $5/8"$  from lower edge of lining. Press up hem along basting. To form a narrow hen, tuck under raw edge to meet basting. Press. Stitch hem in place close to inner pressed edge. Remove basting.



**27. FOR VIEW B** – Make **DART** in SKIRT BACK LINING (8). Press dart toward back.

Stitch skirt front to skirt back along RIGHT side edges, and along LEFT side edges from upper edge to large dot, back-stitching at dot to reinforce the seam. Press seam open, and slit seam allowances under.

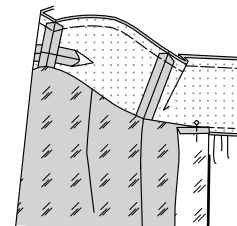
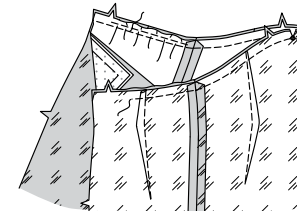


## CONTINUE AS FOLLOWS FOR BOTH VIEWS

**28.** Pin the RIGHT side of the skirt lining to the WRONG side of the bodice, matching centers, small dots, seams, and notches. Stitch over previous stitching to within  $3"$  (7.5cm) of back edges. Trim seam; clip curves. Press seam toward skirt, pressing out the bodice.

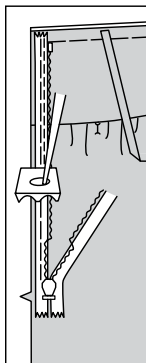
On INSIDE, pin back edges of skirt lining away from back edges of dress.

**NOTE:** The zipper may be longer than the zipper opening and will be adjusted after the zipper is installed.

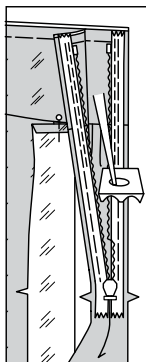




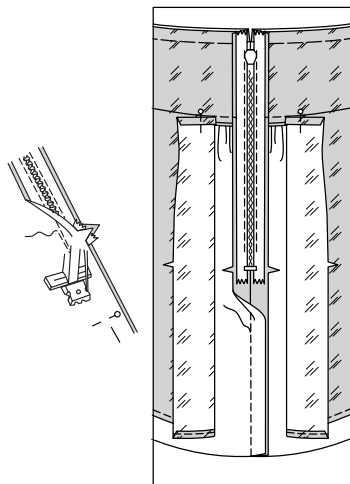
**29.** Open the zipper and press the tape flat on the WRONG side unrolling the coils. Do not press the coils. (Use a low iron setting.) On OUTSIDE, pin RIGHT side of the zipper face down on the RIGHT side of the zipper opening. Have the coil along the seam line, the tape within the seam allowance and the top stop 3/4" (2cm) below upper edge, as shown. Hand-baste along center of the tape. Position zipper foot at the top of the zipper with RIGHT groove of the foot over coil. Stitch along tape to the notch. Back-stitch to reinforce.



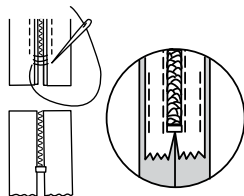
**30.** Pin the remaining half of the zipper to the LEFT side of the zipper opening in same manner. Make sure the upper and lower edges of the garment are even. Hand-baste along the center of the tape. Position zipper foot at the top of the zipper with LEFT groove over the coil. Stitch along tape to the notch. Back-stitch to reinforce.



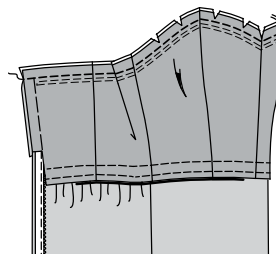
**31.** Close zipper and check that it is invisible from the OUTSIDE. Pull the free ends of the zipper tape away from the seam allowance. Pin remaining center back seam together below zipper. Position zipper foot all the way to the LEFT so the needle goes down through the outer notch of the foot. Start stitching seam 1/4" (6mm) above lowest stitch and slightly to the LEFT. Stitch seam for about 3" (7.5cm). Stitch remainder of seam using your regular presser foot.



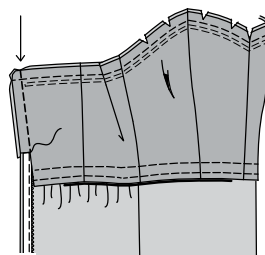
**32.** If the zipper is longer than the opening, using a strong thread, hand-sew a few small stitches across ends of coils at end of opening. Trim away lower end of zipper tape to within 5/8" (1.5cm) of hand-stitches. If you prefer, open out each seam allowance at end of zipper and stitch tape to seam allowance.



**33.** Open out center back opening edges of dress, rolling zipper teeth away from the opening edge. With RIGHT (under bodice channeled side) sides together, pin UNDERBODICE to dress, matching centers and side seams. Stitch upper edge. Trim seam; clip curves and center front to large dot.

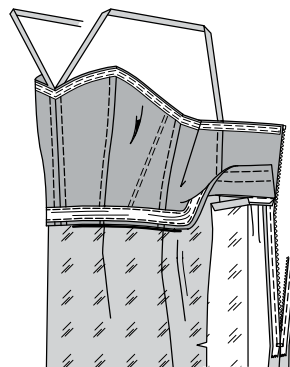


**34.** Pin back opening edges together. Using an adjustable zipper foot, stitch across underbodice 1/2" (1.3cm) from back edges, keeping zipper teeth free. Trim corners. Do not trim center back edges.

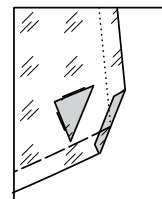


#### LINING FINISH

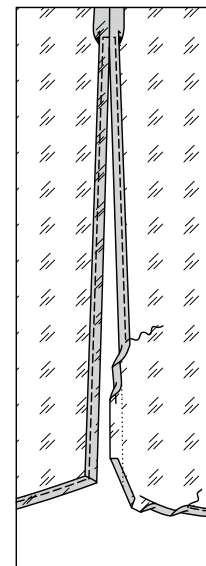
**35.** Turn underbodice to INSIDE. Open out the lining. On INSIDE, pin center back edges of lining together below notch and stitch.



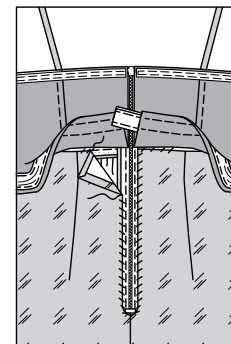
**36.** Open out slit seam allowances. Machine-baste 5/8" from lower edge of lining. Turn under hem allowance diagonally where crease line meets basting line. Trim to 1/4" (6mm).



**37.** Press up hem along basting and slit along crease. To form a narrow hem, tuck under raw edge to meet basting or crease. Press. Stitch hem in place close to inner pressed edge, squaring stitching at slit corners and 1/4" (6mm) above slit opening. Remove basting.

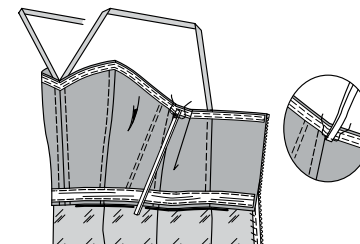


**38.** Move lower edge of underbodice away from center back edges. On INSIDE, press under free upper and back seam allowances of lining. Slipstitch in place over seams.

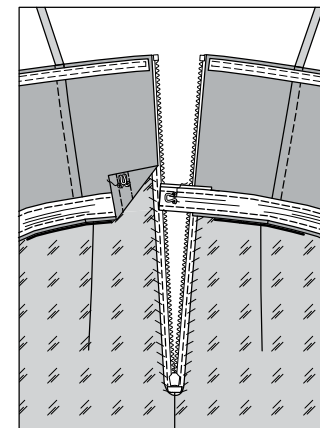


#### FINISHING

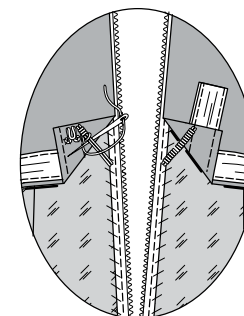
**39.** To make two hang straps, cut a piece of 1/4" (6mm) twill tape 17" (43cm) long. Fold tape in half, bringing ends together. On INSIDE, pin ends to underbodice at side seam, having raw edges 3/4" (2cm) from upper edge. Hand-stitch in place 1/4" (6mm) from raw edges. Turn strap up (over ends) and hand-stitch in place 1/4" (6mm) from fold.



**40.** On INSIDE, sew eye to LEFT side of underbodice elastic extension centered on end. Sew hook to UNDERSIDE of underbodice on RIGHT side of garment at end and between elastic stitching.



**41.** On UNDERSIDE of RIGHT and LEFT back edges, hand-sew 1" (2.5cm) French tack between underbodice and zipper tape, as shown.





# Congrats!

You've completed your sewing adventure

---

## SHARE YOUR LOOK



Post your pattern and tag us  
[@simplicity\\_creative\\_group](#) and [#knowMepatterns](#)  
for a chance to be featured on our social media.

Look for more PDF patterns at [simplicity.com](https://www.simplicity.com)

Have a question or need help with your sewing project call us at  
1-800-782-0323



KnowMe ©2024 a division of IG Design Group Americas Inc. • Atlanta, GA 30342 USA [www.thedesigngroup.com](http://www.thedesigngroup.com) • All Rights Reserved. [www.mccall.com](http://www.mccall.com) • Made in the U.S.A. Fabriqué aux États-Unis.  
To be used for individual private home use only and not for commercial or manufacturing purposes. • A usage privé seulement et non à des fins commerciales ou de production en série. • Para uso privado solamente, no se puede utilizar con propósitos de comercialización o de producción en serie.