



BRITTANY J. JONES
knowME
BY mimi g

ME2110



Scan QR code for a Sew-Along video tutorial.



@brittanyjones



MISSES' AND WOMEN'S KNIT TOP AND WOVEN PANTS Easy

Suggested Fabrics: **A** in Stretch Knits only such as: Cotton Knit, ITY, Jersey, Rib Knit. See Stretch Gauge. **B,C:** Chambray, Chino, Cotton Blends, Denim, Linen Blends, Stretch Wovens, Twill.

Notions: **B,C:** ½" (1.3cm) elastic: 2½yds. (2.0m) for sizes 10-18, 2¾ yds. (2.4m) for sizes 20W-28W, 1¾yds. (1.7m) of ¾" (1cm) twill tape or cording. **Also for C:** 1¾yds. (1.8m) of ¾" (2cm) elastic.

Sizes	10	12	14	16	18	20W	22W	24W	26W	28W
European	36	38	40	42	44	46	48	50	52	54

BODY MEASUREMENTS: Select pattern size based on body measurements

Bust	32½	34	36	38	40	42	44	46	48	50	Ins.
Waist	25	26½	28	30	32	35	37	39	41½	44	"
Hip-9" below waist	34½	36	38	40	42	44	46	48	50	52	"
Back-neck to waist	16	16¼	16½	16¾	17	17¼	17¾	17½	17¾	17¾	"

Top A	60**	1½	1½	1½	1½	1½	1¾	1¾	1¾	1¾	1¾	Yds.
Pants B	45**	3	3	3	3¼	3¾	3¾	3¾	3½	3½	3¾	Yds.
	60**	1¾	1¾	2½	2¾	2¾	2¾	2¾	3	3¾	3¾	"
Pants C	45**	3¼	3¼	3¼	3¼	3¾	3¾	3¾	3¾	3¾	3¾	Yds.
	60**	1¾	1¾	2¾	2¾	2¾	2¾	2¾	3¾	3¾	3¾	"

FINISHED GARMENT MEASUREMENTS (Includes Design and Wearing Ease)

A Bust	47¼	48¾	50¾	52¾	54¾	58	60	62	64	66	Ins.
B,C Hip	37½	39	41	43	45	47	49	51	53	55	"
Width, each leg											
Pants B	19½	20	20½	21	21½	25	25½	26	26½	27	Ins.
Finished side length from waist											
Pants B,C	42	42¼	42½	42¾	43	43¾	44	44¼	44½	44¾	Ins.

*with nap **without nap

Facile

HAUT EN TRICOT ET PANTALONS TISSÉS POUR JEUNES FEMMES ET FEMMES

Tissus Conseillés: **A** en tricot extensibles seulement tel que: Tricot de coton, Tricot interlock en fil retors, Jersey, Tricot à côtes. Reportez-vous au taux d'élasticité. **B,C:** Chambray, Chino, Cottonnades, Denim, Lin mélangés, Tissus tissés extensibles, Twill.

Merceria: **B,C:** Élastique de 1.3cm: 2.0m pour tailles 10 - 18, 2.4m pour tailles 20W - 28W, 1.7m de talonnette de coton ou de cordon de 1cm. **Aussi pour C:** 1.8m d'élastique de 2cm.

Tailles	10	12	14	16	18	20W	22W	24W	26W	28W
Françaises	38	40	42	44	46	48	50	52	54	56
Européen	36	38	40	42	44	46	48	50	52	54

MESURES DU CORPS: Choisissez la taille du patron basée sur les mesures du corps

Poitrine	83	87	92	97	102	107	112	117	122	127	cm
Taille	64	67	71	76	81	89	94	99	105	112	"

Hanches (23cm au-dessous de la taille)

	88	92	97	102	107	112	117	122	127	132	cm
--	----	----	----	-----	-----	-----	-----	-----	-----	-----	----

Dos du cou à la taille

Haut A	150cm*	1.4	1.4	1.4	1.4	1.4	1.6	1.6	1.6	1.6	1.6	m
---------------	--------	-----	-----	-----	-----	-----	-----	-----	-----	-----	-----	---

Pantalon B	115cm*	2.7	2.7	2.7	3.0	3.1	3.1	3.1	3.2	3.2	3.3	m
	150cm*	1.6	1.6	2.3	2.4	2.5	2.5	2.6	2.7	2.9	2.9	"

Pantalon C	115cm*	2.7	2.9	2.9	3.0	3.0	3.1	3.2	3.4	3.4	3.4	m
	150cm*	1.7	1.7	2.5	2.5	2.5	2.5	2.6	2.7	3.0	3.0	"

MESURES DES VÊTEMENTS FINI (Motif et aisance de port compris)

A Poitrine	120	124	129	134	139	147	152	157	163	168	cm
B,C Hanches	95	99	104	109	114	119	124	130	135	140	"

Largeur, chaque jambe

Pantalon B	50	51	52	53	55	64	65	66	67	69	cm
-------------------	----	----	----	----	----	----	----	----	----	----	----

Longueur finie - côté, taille à l'ourlet

Pantalon B,C	107	107	108	109	109	111	112	112	113	114	cm
---------------------	-----	-----	-----	-----	-----	-----	-----	-----	-----	-----	----

*avec sens **sans sens



B



C

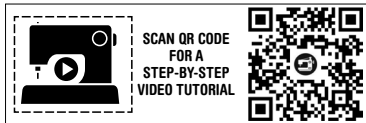


B C

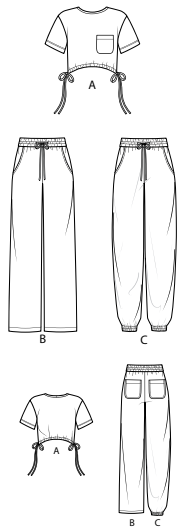
Use the 1 inch (2.54cm) box to ensure you are using rule at 100%
Utilisez la boîte de 2.54 cm pour vous assurer d'utiliser la règle à 100%.
Utilizar un cuadrado de 2.54 cm para asegurarse de estar usando la regla al 100%.

4" of crosswise folded fabric must STRETCH from here
10 cm de tricot plié sur le travers et sur le droit-fil doivent s'étirer de cette limite à celle là
10 cm de tejido de punto doblado (a lo largo y luego al través) deben estirarse desde acá → **To Here 50%** / **jusqu'ici 50%** / **hasta acá 50%** →

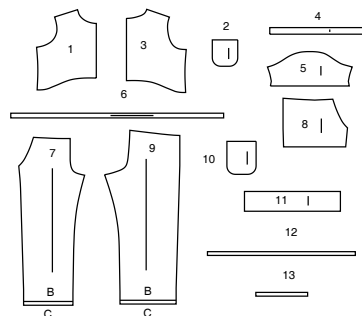
When using the Pick-A-Knit® rule to measure your fabrics stretch capacity, rule must be viewed or printed at 100%.
Quand vous utilisez le taux d'élasticité pour mesurer la capacité d'élasticité des tissus, le taux doit être visible ou imprimé à 100%.
Al utilizar el calibre de elasticidad para medir la capacidad de elasticidad de las telas, el calibre debe estar visible o impreso al 100%.



@brittanyjones



13 PATTERN PIECES



- 1 FRONT - A
- 2 POCKET - A
- 3 BACK - A
- 4 NECKBAND - A
- 5 SLEEVE - A
- 6 TIE END - A
- 7 FRONT - B,C
- 8 SIDE FRONT AND POCKET - B,C
- 9 BACK - B,C
- 10 BACK POCKET - B,C
- 11 CASING - B,C
- 12 ELASTIC GUIDE FOR WAIST - B,C
- 13 ELASTIC GUIDE FOR LEG - C

PATTERN MARKINGS

GRAINLINE: Place on straight grain of fabric, parallel to selvage or fold.

FOLDLINE: Place line on fold of fabric.

BUTTONHOLE MARKING: Indicates exact length and placement of buttonholes.

BUTTON MARKING: Indicates button placement.

NOTCHES AND SYMBOLS: For matching seams and construction details.

Indicates the Bustline, Waistline, Hip and/or Biceps. Measurements refer to circumference of Finished Garment (Body Measurement + Wearing Ease + Design Ease). Adjust pattern if necessary. The measurement excludes pleats, tucks, darts and seam allowances.

SEAM ALLOWANCE: 5/8" (1.5cm) included unless otherwise indicated, but not printed on tissue.

ADJUST IF NECESSARY

Lengthen or Shorten at adjustment lines (==) or where indicated on pattern. If substantial length is added, you may need to purchase additional fabric.

TO SHORTEN: Crease along adjustment line. Make a fold half the amount needed. Tape in place.

TO LENGTHEN: Slash between adjustment lines. Spread amount as needed, keeping edges parallel. Tape over paper.

When Alteration lines are not on tissue, lengthen or shorten at lower edge.

CUTTING AND MARKING

SHRINK FABRIC if not labeled pre-shrunk. Press.

CIRCLE LAYOUT for View, Size, Fabric Width.

Use **WITH NAP** layout for fabrics with one-way designs, nap, pile or surface shading. Because most knits have surface shading, a with nap layout is used.

For **DOUBLE THICKNESS (WITH FOLD)** - fold fabric with right sides together.

*** DOUBLE THICKNESS (WITHOUT FOLD)** - For fabrics with nap, fold fabric crosswise, right sides together. Mark as shown. Cut along crosswise fold of fabric (A). Turn upper layer 180° so arrows go in same direction and place over lower layer, right sides together (B).

For **SINGLE THICKNESS** - place fabric right side up. (For Fur Pile fabrics, place pile side down.)

★ Cut other pieces first, allowing enough fabric to cut this piece. Open fabric. For "Cut 1" pieces, cut piece once on single layer of fabric with piece face up on right side of fabric.

Pattern may have cutting lines for several sizes. Select the proper cutting line or pattern pieces for your size.

Before **CUTTING** place all pieces on fabric according to layout. Pin. (**Layouts show approximate position of pattern pieces; position may vary according to your pattern size.**) Cut **ACCURATELY**, cutting notches outward.

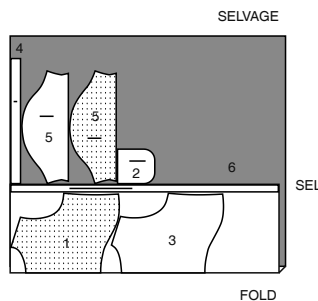
Before removing pattern, **TRANSFER MARKINGS** and lines of construction to Wrong Side of fabric, using the Pin and Chalk Pencil method or Tracing Paper and Dressmaker Wheel. Markings needed on right side of fabric should be thread traced.

NOTE: Broken-line boxes (a| b| c|) in layouts represent pieces cut by measurements provided.

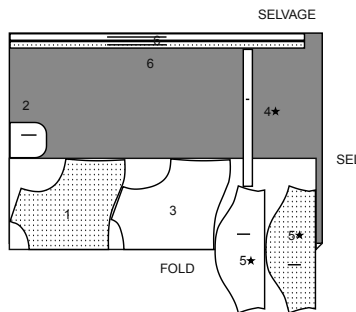
CUTTING LAYOUTS

TOP A - SIZED FOR STRETCH KNITS ONLY
USE PIECES 1 2 3 4 5 6

60" (150CM)
WITH NAP
SIZES 10 12 14 16 18



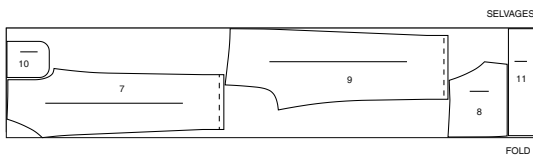
60" (150CM)
WITH NAP
SIZES 20W 22W 24W 26W 28W



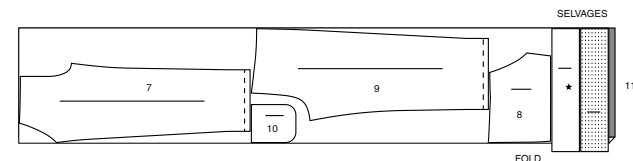
B NOTE: DASHED LINE SHOWN ON PATTERN PIECES IN CUTTING LAYOUTS INDICATES CUTTING LINE FOR SHORTER LENGTH.

PANTS B,C
USE PIECES 7 8 9 10 11

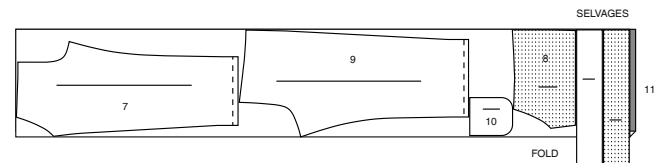
45" (115CM)
WITH NAP
SIZES 10 12 14



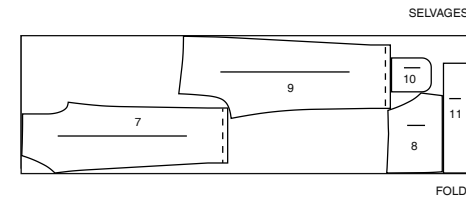
45" (115CM)
WITH NAP
SIZES 16 18



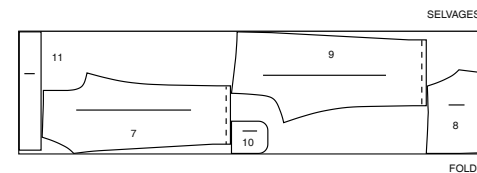
45" (115CM)
WITH NAP
SIZES 20W 22W 24W 26W 28W



60" (150CM)
WITH NAP
SIZES 10 12 14 16 18

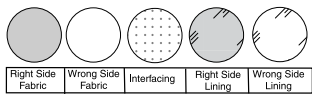


60" (150CM)
WITH NAP
SIZES 20W 22W 24W 26W 28W



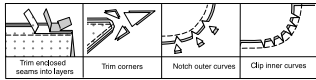
SEWING INFORMATION

FABRIC KEY



SEAM ALLOWANCES

Use 5/8" (1.5cm) seam allowances unless otherwise indicated.



PIN AND FIT

Pin or baste seams, **RIGHT SIDE TOGETHER**, matching notches. Fit garment before stitching major seams.

PRESS

Press seam allowances flat; then open unless otherwise stated. Clip where necessary so they lie flat.

GLOSSARY

Read General Directions on page 1 before you begin.

Sewing terms appearing in **BOLD TYPE** in Sewing Instructions are explained below.

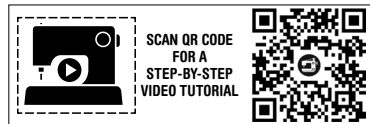
EDGESTITCH - Stitch close to finished edge or seam.

FINISH - Stitch 1/4" (6mm) from raw edge and finish with one of the following: (1) Pink OR (2) Overcast OR (3) Turn in along stitching and stitch close to fold OR (4) Overlock.
OPTIONAL FOR HEMS: Apply Seam Binding.

SLIPSTITCH - Slide needle through a folded edge, then pick up a thread of underneath fabric.

TOPSTITCH - On outside, stitch 1/4" (6mm) from edge, seam or previous stitching, using presser foot as guide, or stitch where indicated in instructions.

UNDERSTITCH - Open out facing or underside of garment; stitch to seam allowance close to seam.



@brittanyjones

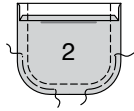
PATTERN PIECES WILL BE IDENTIFIED BY NUMBERS THE FIRST TIME THEY ARE USED.

STITCH SEAMS WITH RIGHT SIDES TOGETHER UNLESS OTHERWISE STATED.

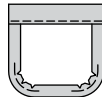
TOP A

FRONT AND BACK

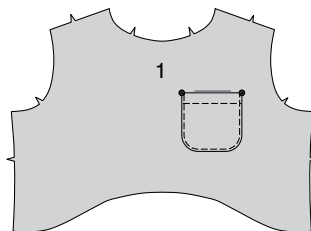
1. Press under 1/4" (6mm) on upper edge of **POCKET (2)**. Turn upper edge to **OUTSIDE** along fold line, forming facing. Stitch along seam line on raw edges. To ease curved edge of pocket, stitch 1/4" (6mm) **INSIDE** the seam line, using a long machine-stitch. Trim seam allowance in the facing area to 1/4" (6mm).



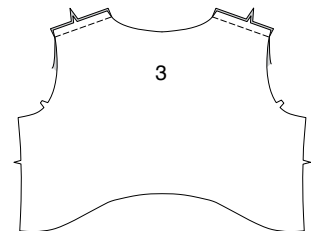
2. Turn corners **RIGHT** side out, turning facing to the **WRONG** side; press, pressing under raw edges along stitching. Pull up ease stitches to shape the curve. To eliminate bulk, notch out the fullness in the seam allowance along the curves as far as the ease stitches. Stitch facing close to inner edge.



3. On **OUTSIDE**, pin pocket to **LEFT** side of **FRONT (1)** matching large dots. **EDGESTITCH** side and lower edges of pocket.

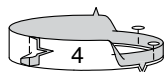


4. With **RIGHT** sides together, stitch front to **BACK (3)** at shoulder seams.

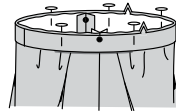


NECK BAND

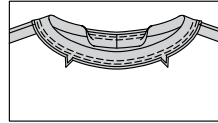
5. With **RIGHT** sides together, stitch center back seam of **NECKBAND (4)**. Fold band in half, lengthwise, with **WRONG** sides together; press. Pin.



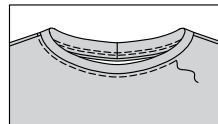
6. On **OUTSIDE**, pin band to neck edge, matching centers, placing small dots at shoulder seams and having raw edges even.



7. Stitch, stretching the band to fit. Stitch again 1/4" (6mm) away from first stitching within the seam allowance. Press seam toward garment, pressing band out.

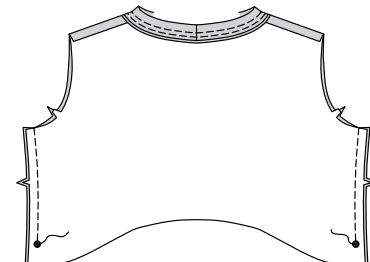


8. On **OUTSIDE**, straight or zig-zag stitch garment close to neck seam.



SLEEVES

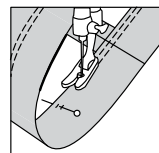
9. With **RIGHT** sides together, stitch front to back at side seams, ending at large dot. Back-stitch at large dot to reinforce seam.



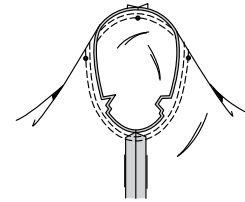
10. With **RIGHT** sides together, stitch underarm seam of **SLEEVE (5)** sections. Press up hem. Stitch **OR** zig-zag 1/4" (6mm) from raw edge and 1/4" (6mm) below first stitching.



11. **NOTE:** It's easier to stitch the hem in a circle if you keep the **RIGHT** side of the sleeve against the machine with the **INSIDE** facing you and the needle **INSIDE** the circle, as shown.

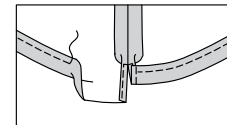
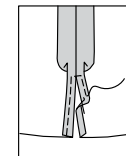


12. Turn sleeve **RIGHT** side out. Hold garment **WRONG** side out with armhole toward you. With **RIGHT** sides together, pin sleeve to armhole edge, matching underarm seams, notches and small dots. Match center small dot to shoulder seam. To distribute fullness evenly, slide fabric along bobbin threads. Baste. Stitch. Stitch again 1/8" (3mm) from first stitching. Trim seam below notches close to stitching. Press only the seam allowance toward sleeve.

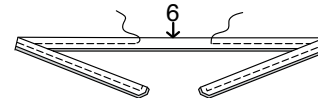


FINISHING

13. Press under 5/8" (1.5cm) on side opening edges below large dots. Press under 1/4" (6mm) on raw edge; stitch, squaring stitching above opening. Press 7/8" (2.2cm) on lower edge of garment to **INSIDE**, forming casing. **FINISH** raw edge if you prefer. Stitch 1/4" (6mm) from raw edge of hem.



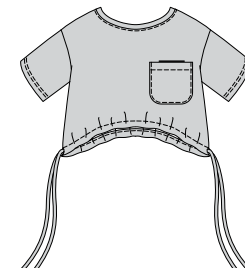
14. Construct two tie ends as follows: Fold each **TIE END (6)** section in half lengthwise, with **RIGHT** sides together. Stitch in 3/8" (1cm) seam, leaving an opening to turn. Trim seam. and corners.



15. Turn tie end **RIGHT** side out; press. **SLIPSTITCH** opening edges together.



16. Insert each tie end through one opening in front and back casing and out the other, having ends extend evenly. Knot ends of ties as desired. Pull up drawing to desired fullness, as shown on front of envelope.

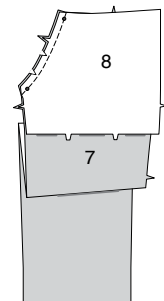


PANTS B, C

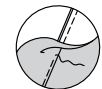
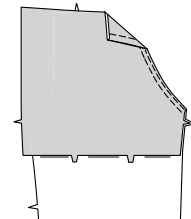
NOTE: Under each sub-heading, View B will be shown unless otherwise indicated.

FRONT AND BACK

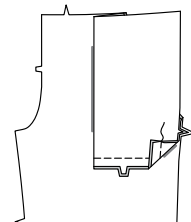
1. With **RIGHT** sides together and raw edges even, pin **SIDE FRONT AND POCKET (8)** to **FRONT (7)**, matching small dots. Stitch single notched edge. Trim seam. Clip curves.



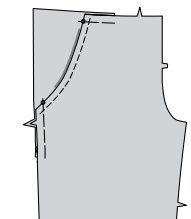
2. **UNDERSTITCH** pocket. Turn pocket to **INSIDE**; press. On **OUTSIDE**, **TOPSTITCH** finished edge.



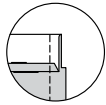
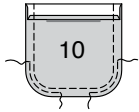
3. On **INSIDE**, with **RIGHT** sides together, fold pocket along fold line, having raw edges even. Stitch double notched edge, as shown.



4. On **OUTSIDE**, lap pants front over pocket and side section, matching small dots, having raw edges even; pin. Baste side and upper edges together.



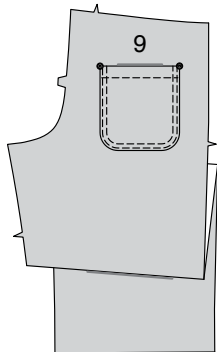
5. Press under 1/4" (6mm) on upper edge of BACK POCKET (10). Turn upper edge to OUTSIDE along fold line, forming facing. Stitch along seam line on raw edges. To ease curved edge of pocket, stitch 1/4" (6mm) INSIDE the seam line, using a long machine-stitch. Trim seam allowance in the facing area to 1/4" (6mm).



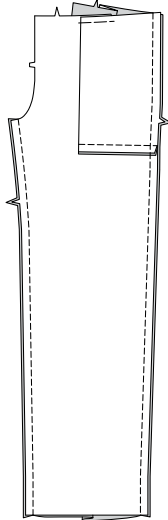
6. Turn corners RIGHT side out, turning facing to the WRONG side; press, pressing under raw edges along stitching. Pull up ease stitches to shape the curve. To eliminate bulk, notch out the fullness in the seam allowance along the curves as far as the ease stitches. Stitch facing close to inner edge.



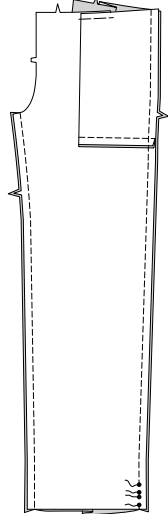
7. On OUTSIDE, pin pocket to each BACK (9) section, matching large dots. **EDGESTITCH** and **TOPSTITCH** side and lower edges of pocket.



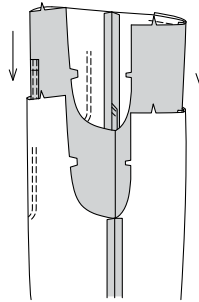
8. VIEW B- With RIGHT sides together, stitch front to back section at side and inner leg seams.



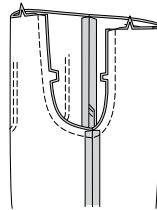
9. VIEW C- Stitch front to back sections at inner leg seams. Stitch side seams leaving an opening between small dots.



10. VIEW B, C- With RIGHT sides together, insert one leg INSIDE the other.

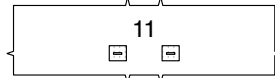


11. With RIGHT sides together, pin center seam, matching inner leg seams and notches. Stitch. To reinforce seam, stitch again over first stitching.

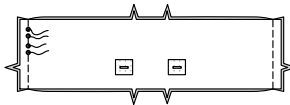


CASING

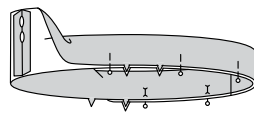
12. Apply a piece of fusible interfacing remnant to one CASING (11) section large enough to cover each buttonhole area, following manufacturer's directions. On OUTSIDE, make buttonholes in casing at markings. This is the front casing.



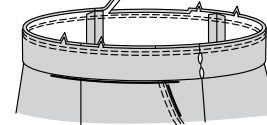
13. With RIGHT sides together, stitch side seams of casing sections, leaving an opening in LEFT side seam between small dots, as shown. Back-stitch at small dots to reinforce seam.



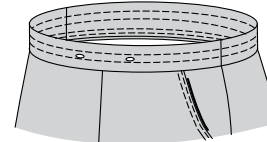
14. Press seams open. Fold casing in half, lengthwise, with WRONG sides together, having raw edges even. Pin.



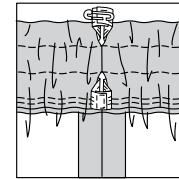
15. The side with the opening is the underside of the casing. With the underside of casing facing you, pin casing to garment, matching centers and side seams. Stitch along seam line. Stitch again 1/4" (6mm) from first stitching within seam allowance. Trim close to second stitching.



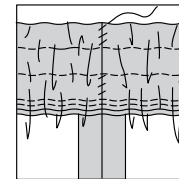
16. Press seam toward garment, pressing casing out. To form three separate casings, stitch along stitching lines, as shown.



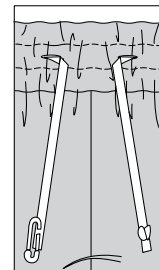
17. Cut two pieces of elastic each the length of ELASTIC GUIDE FOR WAIST (12). Insert elastic through opening in each casing, working elastic through all rows at same time. This eliminates that tug-of-war that you always have when trying to pull that last piece of elastic through an already bunched up casing. Overlap ends and hold with safety pins. Try on garment and adjust to fit. Stitch ends of elastic together securely.



18. SLIPSTITCH opening edges of each casing together. Distribute fullness evenly. **TIP-**To secure elastic so it won't twist in wearing, stitch through all thicknesses of casing in the groove of each seam.

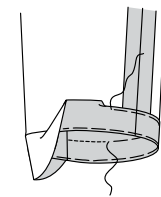


19. Cut a piece of twill tape measuring 62" (157cm) long. Attach a safety pin to one end of twill tape. Insert pin and twill tape through one buttonhole opening in front casing. Work drawstring through entire casing and out through remaining buttonhole, having ends extend evenly in the front. Knot ends of drawstring. Fasten into a bow when wearing.

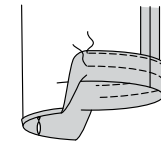


FINISHING

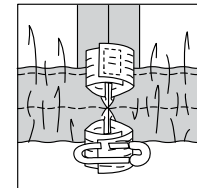
20. VIEW B- Turn up hem. Baste close to fold. Turn in 1/4" (6mm) on raw edge, easing in fullness if necessary. Baste hem in place close to upper edge. Press. **TOPSTITCH** hem along upper basting, as shown.



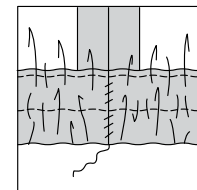
21. VIEW C- Press under 1/4" (6mm) on lower edge of pants. Press lower edge to INSIDE along fold line for casing. Stitch close to pressed edge. To form two separate casings, stitch 1" (2.5cm) away from lower edge, as shown.



22. Cut four pieces of elastic each the length of ELASTIC GUIDE FOR LEG (13). Insert elastic through opening in each casing, working elastic through all rows at same time. This eliminates that tug-of-war that you always have when trying to pull that last piece of elastic through an already bunched up casing. Overlap ends and hold with safety pins. Try on garment and adjust to fit. Stitch ends of elastic together securely.



23. SLIPSTITCH opening edges of each casing together. Distribute fullness evenly. **TIP-**To secure elastic so it won't twist in wearing, stitch through all thicknesses of casings in the groove of each seam.





Congrats!

You've completed your sewing adventure

SHARE YOUR LOOK



Post your pattern and tag us
[@simplicity_creative_group](#) and [#knowMepatterns](#)
for a chance to be featured on our social media.

Look for more PDF patterns at [simplicity.com](https://www.simplicity.com)

Have a question or need help with your sewing project call us at
1-800-782-0323

