



HAPPILY DRESSED

knowME™
BY DESIGN GROUP

ME2109



A

B

Scan QR code
for a Sew-Along
video tutorial.



@happilydressed



Designed and
printed in USA

Average															
MEN'S VEST AND PANTS															
Suggested Fabrics: A,B: Chambray, Chino, Corduroy, Cotton Blends, Denim, Linen Blends. Lining: Cotton Blends, Polyester Blends. Interfacing: Lightweight Fusible.															
Notions: A: Four ¾" (2cm) buttons. B: One 7" (18cm) zipper, one ¾" (2cm) button.															
Sizes	34	36	38	40	42	44	46	48	50	52					
BODY MEASUREMENTS: Select pattern size based on body measurements															
Chest	34	36	38	40	42	44	46	48	50	52	Ins.				
Waist	28	30	32	34	36	39	42	44	46	48	"				
Hip	35	37	39	41	43	45	47	49	51	53	"				
Vest A	45**	1½	1½	1½	1½	1½	1½	1½	1½	1½	Yds.				
	60**	1	1½	1½	1½	1½	1½	1½	1½	1½	"				
Lining	45***	¾	¾	¾	1½	1½	1½	1½	1½	1½	"				
Interfacing	20"	¾yd.													
Pants B	45**	2¼	2½	2½	2½	2½	3	3	3	3	Yds.				
	60**	2½	2¼	2¼	2¼	2¼	2¾	2½	2½	2½	"				
Lining	45***	½ yd.													
Interfacing	20"	¾yd.													
FINISHED GARMENT MEASUREMENTS (Includes Design and Wearing Ease)															
A Chest	39	41	43	45	47	49	51	53	55	57	Ins.				
A Waist	39½	41½	43½	45½	47½	49½	51½	53½	55½	57½	"				
B Hip	36½	38½	40½	42½	44½	46½	48½	50½	52½	54½	"				
Width, lower edge															
Vest A	40	42	44	46	48	50	52	54	56	58	Ins.				
Width, each leg															
Pants B	14½	15¼	16	16½	17¼	18	18¾	19½	20¼	21	Ins.				
Finished back length from base of neck															
Vest A	20¼	20½	20¾	21	21¼	21½	21¾	22	22¼	22½	Ins.				
Finished side length from waist															
Pants B (sits 1" below waist)	41¾	42	42¼	42½	42¾	43	43¼	43½	43¾	44	Ins.				

*with nap **without nap

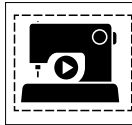
Moins Facile															
GILET ET PANTALON POUR HOMMES															
Tissus Conseillés: A,B: Chambray, Chino, Velours côtelé, Cotonnades, Denim, Lin mélangés. Doublure: Cotonnades, Mélanges de polyester. Entoilage: Thermocollant léger.															
Merçerie: A: 4 boutons de 2cm. B: 1 fermeture à glissière de 18cm, 1 bouton de 2cm.															
Tailles	34	36	38	40	42	44	46	48	50	52					
MESURES DU CORPS: Choisissez la taille du patron basée sur les mesures du corps															
Poitrine	87	92	97	102	107	112	117	122	127	132	cm				
Taille	71	76	82	87	92	99	107	112	117	122	"				
Hanches (23cm au-dessous de la taille)	89	94	99	104	109	115	119	124	128	135	cm				
Gilet A	115cm*	1.0	1.0	1.0	1.3	1.3	1.3	1.4	1.4	1.4	m				
	150cm*	0.9	0.9	0.9	1.0	1.0	1.0	1.0	1.0	1.0	"				
Doublure	115cm**	0.7	0.7	0.7	0.9	1.0	1.0	1.0	1.0	1.1	"				
Entoilage	51cm	- 0.2m													
Pantalon B	115cm*	2.1	2.3	2.3	2.5	2.5	2.6	2.7	2.7	2.7	m				
	150cm*	1.9	2.1	2.1	2.1	2.1	2.1	2.2	2.3	2.3	"				
Doublure	115cm**	- 0.5m													
Entoilage	51cm	- 0.8m													
MESURES DES VÊTEMENTS FINI (Motif et aisance de port compris)															
A Poitrine	99	104	109	114	119	124	130	135	140	145	cm				
A Taille	100	105	110	116	121	126	131	136	141	146	"				
B Hanches	93	98	103	108	113	118	123	128	133	138	"				
Largeur à l'ourlet															
Gilet A	102	107	112	117	122	127	132	137	142	147	cm				
Largeur, chaque jambe															
Pantalon B	37	39	41	42	44	46	48	50	51	53	cm				
Longueur finie – dos, votre nuque à l'ourlet															
Gilet A	51	52	53	53	54	55	55	56	57	57	cm				
Longueur finie – côté, taille à l'ourlet															
Pantalon B (repose 2.5cm dessous de la taille)	106	107	107	108	109	109	110	110	111	112	cm				

*avec sens **sans sens

A

B

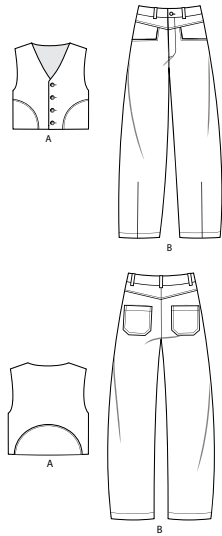
knowME[®] by design[®] KnowMe ©2024 a division of IG Design Group Americas Inc. • Atlanta, GA 30342 USA www.thedesigngroup.com • All Rights Reserved. www.mccall.com • Made in the U.S.A. Fabriqué aux États-Unis.
To be used for individual private home use only and not for commercial or manufacturing purposes. • À usage privé seulement et non à des fins commerciales ou de production en série. • Para uso privado solamente, no se puede utilizar con propósitos de comercialización o de producción en serie.



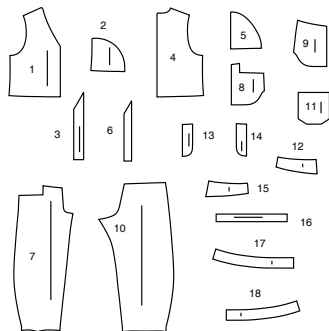
SCAN OR CODE
FOR A
STEP-BY-STEP
VIDEO TUTORIAL



@happilydressedr

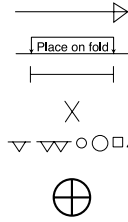


18 PATTERN PIECES



- | | |
|-----------------------------|------------------------------|
| 1 FRONT - A | 10 BACK - B |
| 2 FRONT PATCH - A | 11 BACK POCKET - B |
| 3 FRONT INTERFACING - A | 12 YOKE FRONT - B |
| 4 BACK - A | 13 RIGHT FLY - B |
| 5 BACK PATCH - A | 14 LEFT FLY FACING - B |
| 6 BUTTONHOLE GUIDE - A | 15 YOKE BACK - B |
| 7 FRONT - B | 16 CARRIER - B |
| 8 POCKET FACING - B | 17 RIGHT FRONT WAISTBAND - B |
| 9 SIDE FRONT AND POCKET - B | 18 LEFT FRONT WAISTBAND - B |

PATTERN MARKINGS



GRAINLINE: Place on straight grain of fabric, parallel to selvage or fold.

FOLDLINE: Place line on fold of fabric.

BUTTONHOLE MARKING: Indicates exact length and placement of buttonholes.

BUTTON MARKING: Indicates button placement.

NOTCHES AND SYMBOLS: For matching seams and construction details.

Indicates the Bustline, Waistline, Hip and/or Biceps. Measurements refer to circumference of Finished Garment (Body Measurement + Wearing Ease + Design Ease). Adjust pattern if necessary. The measurement excludes pleats, tucks, darts and seam allowances.

SEAM ALLOWANCE: 5/8" (1.5cm) included unless otherwise indicated, but not printed on tissue.

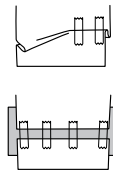
ADJUST IF NECESSARY

Lengthen or Shorten at adjustment lines (==) or where indicated on pattern. If substantial length is added, you may need to purchase additional fabric.

TO SHORTEN: Crease along adjustment line. Make a fold half the amount needed. Tape in place.

TO LENGTHEN: Slash between adjustment lines. Spread amount as needed, keeping edges parallel. Tape over paper.

When Alteration lines are not on tissue, lengthen or shorten at lower edge.



CUTTING AND MARKING

★ Cut other pieces first, allowing enough fabric to cut this piece. Open fabric. For "Cut 1" pieces, cut piece once on single layer of fabric with piece face up on right side of fabric.

Pattern may have cutting lines for several sizes. Select the proper cutting line or pattern pieces for your size.

Before **CUTTING** place all pieces on fabric according to layout. Pin. (Layouts show approximate position of pattern pieces; position may vary according to your pattern size.) Cut **ACCURATELY**, cutting notches outward.

Before removing pattern, **TRANSFER MARKINGS** and lines of construction to Wrong Side of fabric, using the Pin and Chalk Pencil method or Tracing Paper and Dressmaker Wheel. Markings needed on right side of fabric should be traced.

NOTE: Broken-line boxes (a! b! c!) in layouts represent pieces cut by measurements provided.

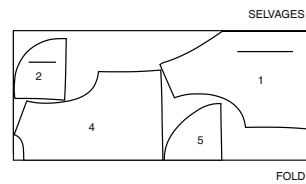
CUTTING LAYOUTS

RIGHT SIDE OF PATTERN	WRONG SIDE OF PATTERN	RIGHT SIDE OF FABRIC	WRONG SIDE OF FABRIC

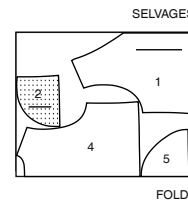
VEST A

PIECES 1 2 4 5

45" (115CM)
WITH NAP
ALL SIZES



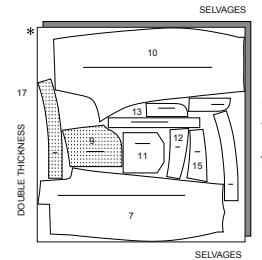
60" (150CM)
WITH NAP
ALL SIZES



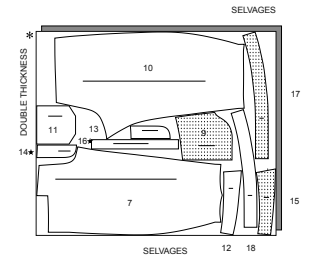
PANTS B

PIECES 7 9 10 11 12 13 14 15 16 17 18

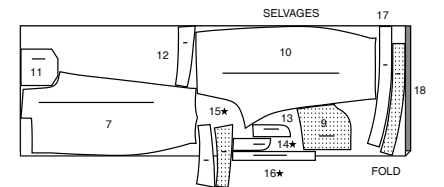
45" (115CM)
WITH NAP
SIZES 34 36 38



45" (115CM)
WITH NAP
SIZES 40 42 44 46 48 50 52



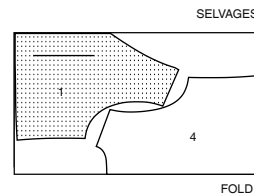
60" (150CM)
WITH NAP
ALL SIZES



LINING

PIECES 1 4

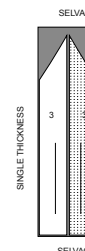
45" (115CM)
WITHOUT NAP
ALL SIZES



INTERFACING

PIECE 3

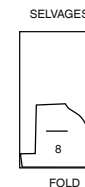
20" (51CM)
ALL SIZES



LINING

PIECE 8

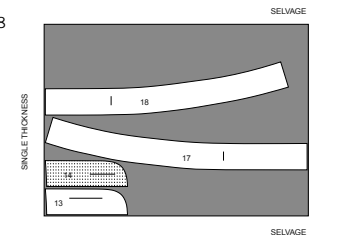
45" (115CM)
WITHOUT NAP
ALL SIZES



INTERFACING

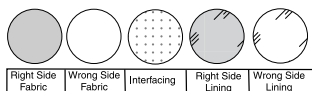
PIECES 13 14 17 18

20" (51CM)
ALL SIZES



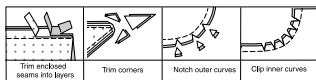
SEWING INFORMATION

FABRIC KEY



SEAM ALLOWANCES

Use 5/8" (1.5cm) seam allowances unless otherwise indicated.



PIN AND FIT

Pin or baste seams, **RIGHT SIDE TOGETHER**, matching notches. Fit garment before stitching major seams.

PRESS

Press seam allowances flat; then open unless otherwise stated. Clip where necessary so they lie flat.

GLOSSARY

GLOSSARY OF SEWING METHODS

Sewing methods shown in **BOLD** are defined below:

DART – To make dart, with **RIGHT** sides together, fold the fabric through the center of the dart, bringing broken lines and small dots together. On **INSIDE**, place pins at **RIGHT** angles to the broken lines. Stitch the dart from wide end to point.

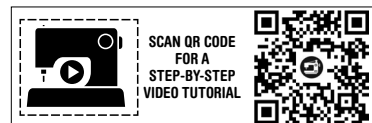
TIP- To prevent a "bubble" at the point, make the last few stitches right on the fold and leave the thread ends long enough to tie a knot. **DO NOT** back-stitch at the point.

Press the dart flat along the stitching to "blend" the stitches, then press dart as indicated in the Sewing Directions.

STAY-STITCH – Stitch 1/2" (1.3cm) from cut edge in direction of arrows. This stitching stays in permanently to prevent stretching on curved edges. (Shown only in the first illustration.)

STITCH IN THE DITCH – On the **OUTSIDE** of the garment, stitch in the groove formed by the seam. Be sure to catch all the underneath layers in the stitching.

UNDERSTITCH – Press facing and seam away from garment, stitching through facing and seam allowances close to seam.



@happilydressedr

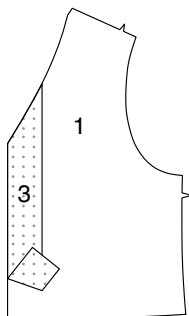
PATTERN PIECES WILL BE IDENTIFIED BY NUMBERS THE FIRST TIME THEY ARE USED.

STITCH 5/8" (1.5CM) SEAMS WITH RIGHT SIDES TOGETHER UNLESS OTHERWISE STATED.

VEST A

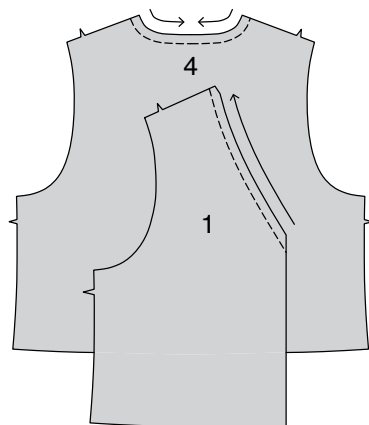
INTERFACING

1. Pin **FRONT INTERFACING** (3) to the **WRONG** side of **FRONT** (1). Fuse in place following manufacturer's directions.

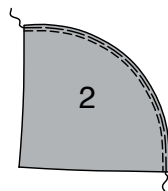


VEST

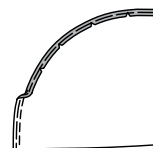
2. **STAY-STITCH** neck edge of **FRONT** (1) and **BACK** (4).



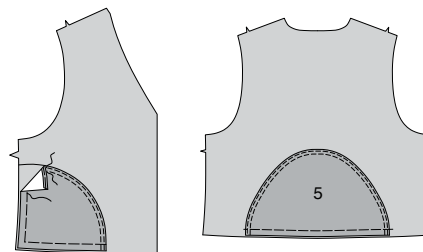
3. On **OUTSIDE**, machine-stitch along 3/8" (1cm) seamline on curved edge of **FRONT PATCH** (2). To ease curved edge of patch, stitch 1/4" (6mm) **INSIDE** the seamline, using a long machine-stitch.



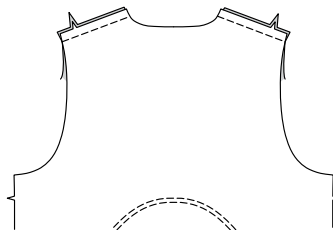
4. Press under raw edges along stitching, pulling up ease stitches to shape the curve. To eliminate bulk, notch out the fullness in the seam allowance as far as ease stitches.



5. On **OUTSIDE**, pin patch to front placing pressed edge along placement line. Stitch close to inner pressed edge, and again 1/4" (6mm) from first stitching. Baste raw edges together. Prepare and stitch **BACK PATCH** (5) to back in the same manner.

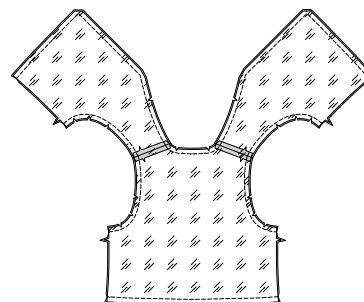


6. With **RIGHT** sides together and raw edges even, pin front to back at shoulder edges. Stitch.

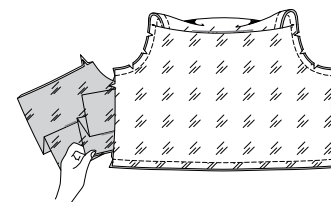


LINING

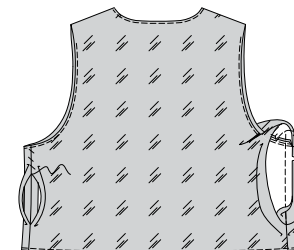
7. Stitch shoulder seams of lining. With **RIGHT** sides together, pin lining to vest, matching centers and shoulder seams, having raw edges even. Stitch lining to vest, leaving side edges open for turning. Trim seam; clip curves.



8. Turn vest **RIGHT** side out by pulling each front through shoulder and out one of the back side openings, as shown; press.

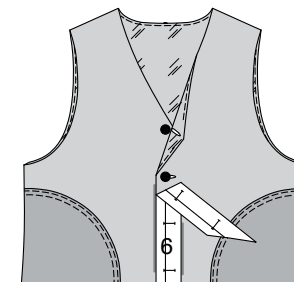


9. UNDERSTITCH the lining as far as possible. With **RIGHT** sides together and raw edges even, pin vest and lining at sides, matching armhole seams and lower seams. To stitch, begin on lining 1" (2.5cm) above armhole seam; stitch vest seam and end on lining 1" (2.5cm) below lower seam edge. Press seam open. Turn in seam allowances of remaining lining edges and slipstitch together.



FINISHING

10. To mark buttonholes on **LEFT** front, place **BUTTONHOLE GUIDE** (6) along finished edge of vest, matching centers, as shown. Transfer buttonhole markings to vest. Make buttonholes at markings. Lap **LEFT** front over **RIGHT** front, matching centers. Sew buttons under buttonholes.

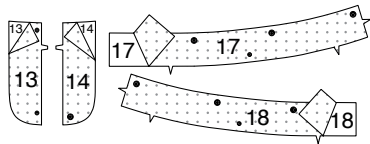


PANTS B

NOTE: Pants are designed to be worn 1" (2.5cm) below waist.

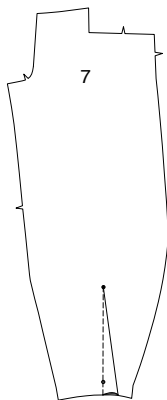
INTERFACING

1. Pin interfacing to RIGHT FLY (13), LEFT FLY FACING (14), RIGHT FRONT WAISTBAND (17), and LEFT FRONT WAISTBAND (18). Fuse in place following manufacturer's directions.

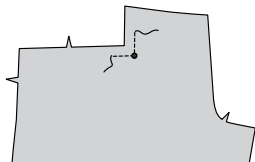


FRONT

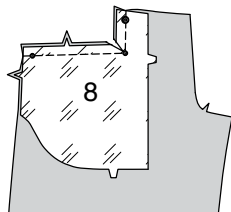
2. Make **DART** in lower edge of FRONT (7). Press dart away from center.



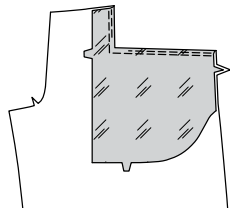
3. To reinforce front at inner corner, stitch along stitching line, pivoting with needle in fabric at small dot, using small machine stitches.



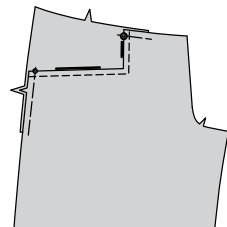
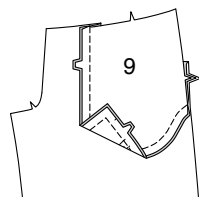
4. With RIGHT sides together and raw edges even, pin POCKET FACING (8) to front, matching small dots, large dots, and notches. Stitch along upper and side front edges. Clip inner corner at the small dot, being careful not to clip through stitching.



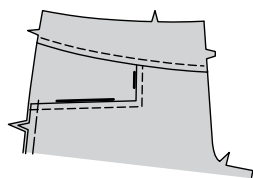
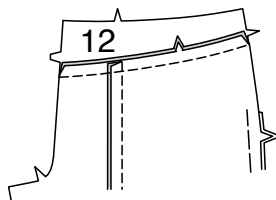
5. **UNDERSTITCH** the pocket facing. Turn facing to INSIDE; press. On OUTSIDE, topstitch 1/4" (6mm) from finished edge.



6. With RIGHT sides together and raw edges even, pin SIDE FRONT AND POCKET (9) to pocket facing, matching small dots, large dots and notches. Stitch double notched edges of pocket facing to pocket. Baste upper and side edges of pocket to front.

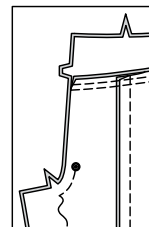


7. With RIGHT sides together and raw edges even, pin YOKE FRONT (12) to upper edge of front and side front and pocket, matching centers and notches. Stitch. Press seam toward yoke. On OUTSIDE, topstitch yoke 1/4" (6mm) from seam.

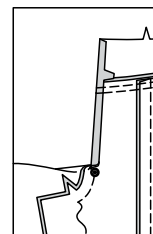


ZIPPER AND FLY OPENING

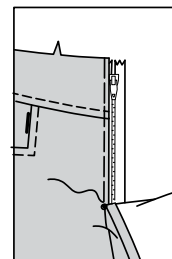
8. Stitch front sections together at center front between large dot and notch.



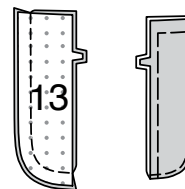
9. Turn in RIGHT front opening edge along foldline; press.



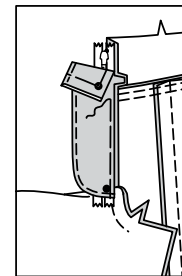
10. Place closed zipper (face up) under RIGHT front opening edge, having pressed edge close to zipper teeth and zipper stop at small dot. Using a zipper foot, baste close to pressed edge.



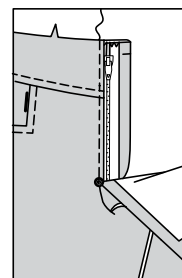
11. With RIGHT sides together, pin RIGHT FLY (13) section with raw edges even. Stitch long, unnotched edge. Trim seam. **UNDERSTITCH** the right fly. Turn. Press. Baste raw edges.



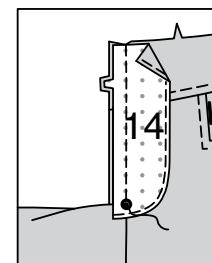
12. On INSIDE, pin right fly to RIGHT front opening edge (over zipper), matching notches and small dots, having raw edges even. Baste along previous basting for zipper.



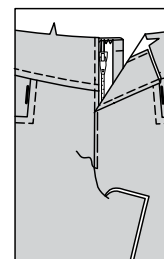
13. On outside, using a zipper foot, stitch close to pressed edge of front through all layers.



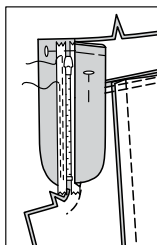
14. Finish outer edge of LEFT FLY FACING (14) with a straight, zigzag, or overlock stitch. Pin fly facing to LEFT front opening edge, matching notches and large dots. Stitch, ending at large dot. Trim seam. **UNDERSTITCH** fly facing. Turn facing to INSIDE; press.



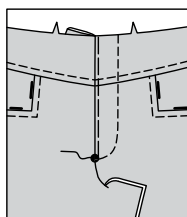
15. Lap LEFT front over RIGHT, matching centers. Baste close to edge through all thicknesses.



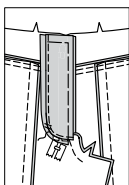
16. Pin right fly out of the way. Open out fly facing. Pin remaining zipper tape to fly facing, keeping LEFT front free. Using a zipper foot, stitch in place close to zipper teeth and along center of zipper tape.



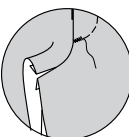
17. Turn facing down. On OUTSIDE, stitch LEFT front along stitching line, keeping right fly free.



18. Turn right fly back in place. On INSIDE, hand tack fly and facing together at lower edge, as shown. Trim away excess zipper tape even with lower edge of fly, if needed.

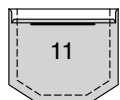


19. On OUTSIDE, machine-stitch a bar tack across lower end of fly through all thicknesses.

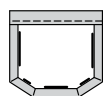


BACK

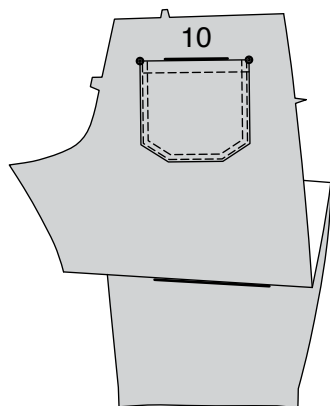
20. Press under 1/4" (6mm) on upper edge of BACK POCKET (11). Turn upper edge to OUTSIDE along fold line, forming facing. Stitch along seam line on raw edges. Trim seam allowance in the facing area to 1/4" (6mm).



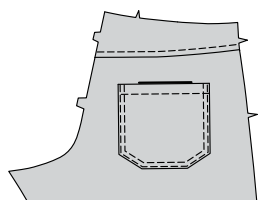
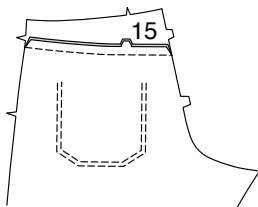
21. Turn corners RIGHT side out, turning facing to the WRONG side; press, pressing under raw edges along stitching, folding in fullness at corners. Stitch facing close to inner edge.



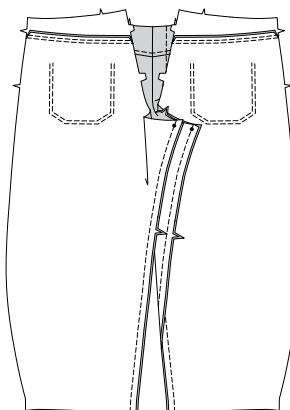
22. On OUTSIDE, pin pocket to BACK (10) matching large dots. Stitch close to side and lower edges and 1/4" (6mm) away.



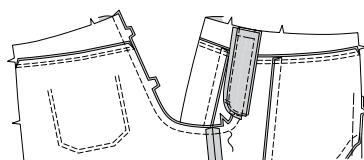
23. With RIGHT sides together and raw edges even, pin YOKE BACK (15) to upper edge of back, matching centers and notches. Stitch. Press seam toward yoke. On OUTSIDE, topstitch yoke 1/4" (6mm) from seam.



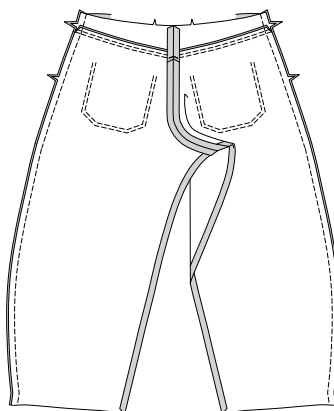
24. Pin front to back at inner leg edges, matching notches and small dots. Stitch, stretching back to fit.



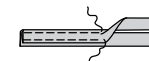
25. With RIGHT sides together, pin center edges, matching inner leg seams and notches. Stitch from upper back edge to front, connecting to previous stitching. To reinforce seam, stitch again over first stitching.



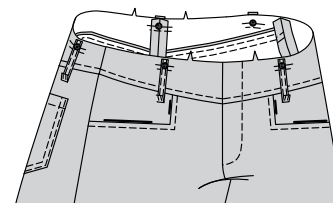
26. Stitch front to back at side edges.



27. Fold CARRIER (16) in half, lengthwise with WRONG sides together. Press, setting in a crease. Open out long edges of carrier and turn them to WRONG side and meet at the crease. Press. Fold carrier in half lengthwise, bringing pressed edges together. Stitch close to both long edges.

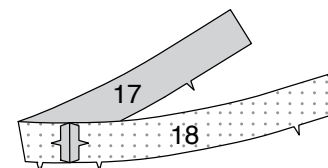


28. Cut carrier into five, 3-3/4" (9.5cm) long pieces. Press under 5/8" (1.5cm) on one end of each. On OUTSIDE, pin carriers to upper edge of yoke over the large dots, having raw edges even. Baste along seamline. Stitch yoke across carriers 1/4" (6mm) from basting.

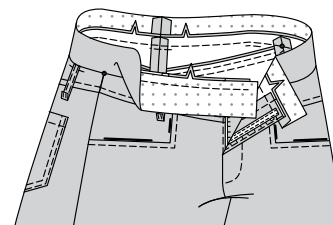


WAISTBAND

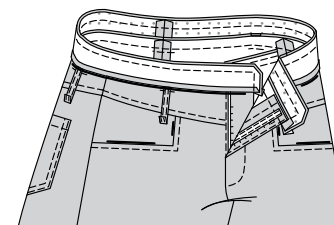
29. Stitch interfaced RIGHT FRONT WAISTBAND (17) to interfaced LEFT FRONT WAISTBAND (18) along center back edges.



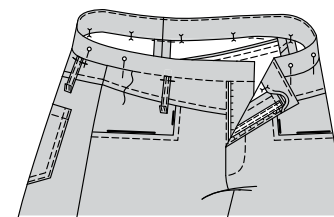
30. With RIGHT sides together and raw edges even, pin waistband to pants, matching centers and notches, placing small dots at side seams. (Ends extend 5/8" (1.5cm) beyond opening edges.) Stitch. Trim seam. Press seam toward band, pressing band out.



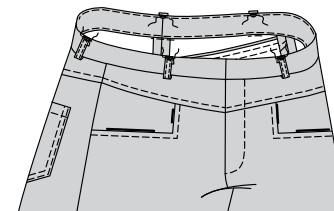
31. Stitch center back edges of waistband facing. Press under 1/2" (1.3cm) on notched edge; trim to 1/4" (6mm). With RIGHT sides together, pin facing to band matching centers, having raw edges even. Stitch upper edge and ends of band. Trim seam and corners.



32. UNDERSTITCH the facing. Turn facing to INSIDE; press. On INSIDE, pin pressed edge of facing over seam, placing pins on OUTSIDE. On OUTSIDE, stitch in the ditch of the seam, catching in pressed edge of facing on the INSIDE.

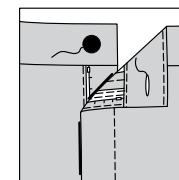


33. Pin pressed edge of carriers to upper edge of waistband over large dots. Stitch in place close to pressed edge, securely.

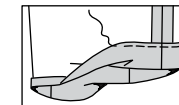


FINISHING

34. Make buttonhole in LEFT front waistband at marking, and sew button to RIGHT front waistband at small dot.



35. Press up lower edge of pant leg along 1-1/4" (3.2cm) hem allowance. Turn under raw edge 1/4" (6mm). Stitch close to inner pressed edge.





Congrats!

You've completed your sewing adventure

SHARE YOUR LOOK



Post your pattern and tag us
[@simplicity_creative_group](#) and [#knowMepatterns](#)
for a chance to be featured on our social media.

Look for more PDF patterns at [simplicity.com](https://www.simplicity.com)

Have a question or need help with your sewing project call us at
1-800-782-0323



KnowMe ©2024 a division of IG Design Group Americas Inc. • Atlanta, GA 30342 USA www.thedesigngroup.com • All Rights Reserved. www.mccall.com • Made in the U.S.A. Fabriqué aux États-Unis.
To be used for individual private home use only and not for commercial or manufacturing purposes. • A usage privé seulement et non à des fins commerciales ou de production en série. • Para uso privado solamente, no se puede utilizar con propósitos de comercialización o de producción en serie.