



ALISSAH THREADS
knowME
BY MIMI G



Scan QR code for a Sew-Along video tutorial.



@alissahthreads



Designed and printed in USA

ME2108

Average

MISSES' DRESS WITH SLEEVE VARIATIONS

Suggested Fabrics: Chambray, Cotton Blends, Cotton Lawn, Denim, Linen Blends, Rayon Blends, Viscose Blends. **Interfacing:** Lightweight Fusible.

Notions: A,B: Three ½" (1.3cm) buttons, 6" (15cm) length of ¼" (3mm) elastic, one pkg. of ½" (1.3cm) single fold bias tape, 1½ yds. (1.1m) of 1" - 1½" (2.5cm - 4cm) flat lace (opt.). **Also for B:** ¾ yd. (0.8m) of ¾" (1cm) elastic.

Sizes	4	6	8	10	12	14	16	18	20	22
European	30	32	34	36	38	40	42	44	46	48

BODY MEASUREMENTS: Select pattern size based on body measurements

Bust	29½	30½	31½	32½	34	36	38	40	42	44	Ins.
Waist	22	23	24	25	26½	28	30	32	34	37	"
Hip-9" below waist	31½	32½	33½	34½	36	38	40	42	44	46	"
Back-neck to waist	15¼	15½	15¾	16	16¼	16½	16¾	17	17¼	17½	"

Interfacing A,B	20"	5/8"	5/8"	5/8"	3/4"	3/4"	3/4"	3/4"	3/4"	3/4"	3/4"	Yd.
Dress A	45"*	2 1/2"	2 1/2"	2 1/4"	2 1/4"	2 1/4"	2 1/4"	2 1/4"	2 1/4"	2 3/8"	2 3/8"	Yds.
	60"*	2	2	2	2	2	2	2 1/8"	2 1/8"	2 1/8"	2	"
Dress B	45"*	2 3/8"	2 3/8"	2 3/4"	2 3/4"	2 3/4"	2 3/4"	2 3/4"	2 3/4"	2 7/8"	3	Yds.
	60"*	2 1/2"	2 1/2"	2 1/2"	2 1/2"	2 1/2"	2 1/2"	2 3/8"	2 3/8"	2 3/8"	2 1/2"	"

FINISHED GARMENT MEASUREMENTS (Includes Design and Wearing Ease)

A,B Bust	35	36	37	38	39½	41½	43½	45½	47½	49½	Ins.
Width, lower edge											
Dress A,B	73	74	75	76	77½	78½	79½	80½	81½	82½	Ins.
Finished back length from base of neck											
Dress A,B	32¼	32½	32¾	33	33¼	33½	33¾	34	34¼	34½	Ins.

*with nap **without nap

Moins Facile

ROBE AVEC VARIATIONS DE MANCHE POUR JEUNES FEMMES

Tissus Conseillés: Chambray, Cotonnades, Linon de coton, Denim, Lin mélangés, Mélanges de rayonnées, Mélanges de viscose. **Entoilage:** Thermocollant léger.

Mercerie: A,B: 3 boutons de 1.3cm, 15cm de longueur d'élastique de 3mm, 1 paquet de ruban de biais simple de 1.3cm, 1.1m de dentelle plate de 2.5cm - 4cm (facultatif). **Aussi pour B:** 0.8m d'élastique de 1cm.

Tailles	4	6	8	10	12	14	16	18	20	22
Françaises	32	34	36	38	40	42	44	46	48	50
Européen	30	32	34	36	38	40	42	44	46	48

MESURES DU CORPS: Choisissez la taille du patron basée sur les mesures du corps

Poitrine	75	78	80	83	87	92	97	102	107	112	cm
Taille	56	58	61	64	67	71	76	81	87	94	"
Hanches (23cm au-dessous de la taille)	80	83	85	88	92	97	102	107	112	117	cm
Dos du cou à la taille	39	39.5	40	40.5	41.5	42	42.5	43	44	44.5	"

Entoilage A,B	51cm	0.6	0.6	0.6	0.6	0.7	0.7	0.7	0.7	0.7	m
Robe A	115cm*	1.9	1.9	1.9	2.1	2.1	2.1	2.1	2.1	2.2	m
	150cm*	1.7	1.8	1.8	1.8	1.8	1.8	1.9	1.9	1.9	"
Robe B	115cm*	2.4	2.4	2.4	2.5	2.5	2.5	2.5	2.6	2.6	m
	150cm*	1.8	1.9	1.9	1.9	1.9	1.9	2.2	2.2	2.3	"

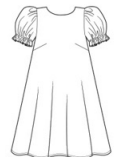
MESURES DES VÊTEMENTS FINI (Motif et aisance de port compris)

A,B Poitrine	89	91	94	97	100	105	110	116	121	126	cm
Largeur à l'ourlet											
Robe A,B	185	188	191	193	197	199	202	204	207	210	cm
Longueur finie – dos, votre nuque à l'ourlet											
Robe A,B	82	83	83	84	84	85	86	86	87	88	cm

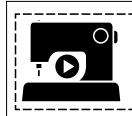
*avec sens **sans sens



A



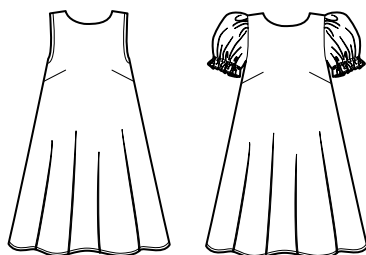
B



SCAN OR CODE
FOR A
STEP-BY-STEP
VIDEO TUTORIAL

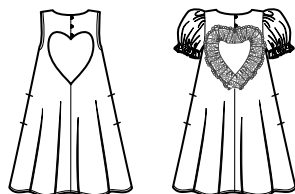


@alissahthreads



A

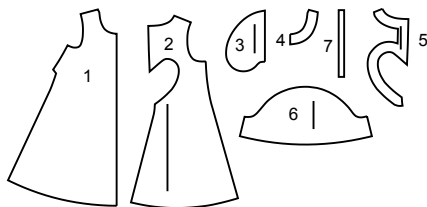
B



A

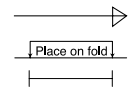
B

7 PATTERN PIECES



- 1 Front-A,B
2 Back-A,B
3 Pocket-A,B
4 Front Facing-A,B
5 Back Facing-A,B
6 Sleeve-B
7 Elastic Guide for Sleeve-B

PATTERN MARKINGS



GRAINLINE: Place on straight grain of fabric, parallel to selvage or fold.

FOLDLINE: Place line on fold of fabric.

BUTTONHOLE MARKING: Indicates exact length and placement of buttonholes.

BUTTON MARKING: Indicates button placement.

NOTCHES AND SYMBOLS: For matching seams and construction details.

Indicates the Bustline, Waistline, Hip and/or Biceps. Measurements refer to circumference of Finished Garment (Body Measurement + Wearing Ease + Design Ease). Adjust pattern if necessary. The measurement excludes pleats, tucks, darts and seam allowances.

SEAM ALLOWANCE: 5/8" (1.5cm) included unless otherwise indicated, but not printed on tissue.

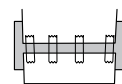
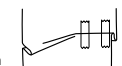
ADJUST IF NECESSARY

Lengthen or Shorten at adjustment lines (==) or where indicated on pattern. If substantial length is added, you may need to purchase additional fabric.

TO SHORTEN: Crease along adjustment line. Make a fold half the amount needed. Tape in place.

TO LENGTHEN: Slash between adjustment lines. Spread amount as needed, keeping edges parallel. Tape over paper.

When Alteration lines are not on tissue, lengthen or shorten at lower edge.



CUTTING AND MARKING

SHRINK FABRIC if not labeled pre-shrunk. Press.

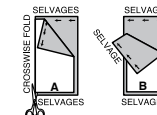
CIRCLE LAYOUT for View, Size, Fabric Width.

Use **WITH NAP** layout for fabrics with one-way designs, nap, pile or surface shading. Because most knits have surface shading, a with nap layout is used.

For **DOUBLE THICKNESS (WITH FOLD)** - fold fabric with right sides together.

*** DOUBLE THICKNESS (WITHOUT FOLD)** - For fabrics with nap, fold fabric crosswise, right sides together. Mark as shown. Cut along crosswise fold of fabric (A). Turn upper layer 180° so arrows go in same direction and place over lower layer, right sides together (B).

For **SINGLE THICKNESS** - place fabric right side up. (For Fur Pile fabrics, place pile side down.)



★ Cut other pieces first, allowing enough fabric to cut this piece. Open fabric. For "Cut 1" pieces, cut piece once on single layer of fabric with piece face up on right side of fabric.

Pattern may have cutting lines for several sizes. Select the proper cutting line or pattern pieces for your size.

Before **CUTTING** place all pieces on fabric according to layout. Pin. (Layouts show approximate position of pattern pieces; position may vary according to your pattern size.) Cut **ACCURATELY**, cutting notches outward.

Before removing pattern, **TRANSFER MARKINGS** and lines of construction to Wrong Side of fabric, using the Pin and Chalk Pencil method or Tracing Paper and Dressmaker Wheel. Markings needed on right side of fabric should be thread traced.

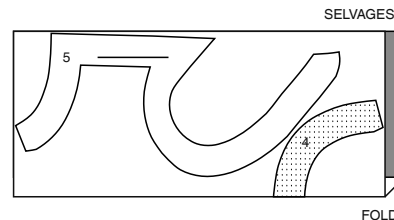
NOTE: Broken-line boxes (at bl cl) in layouts represent pieces cut by measurements provided.

CUTTING LAYOUTS

INTERFACING A,B

USE PIECES: 4 5

20" (54CM)
ALL SIZES



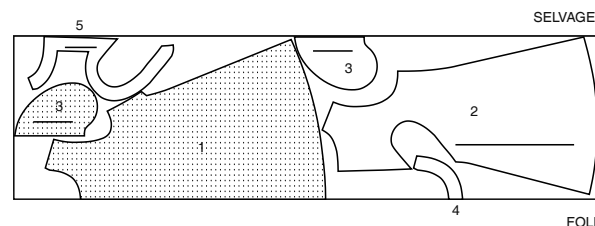
SELVAGES

FOLD

DRESS A

USE PIECES: 1 2 3 4 5

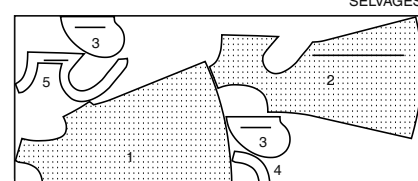
45" (115 CM)
WITH NAP
ALL SIZES



SELVAGES

FOLD

60" (150 CM)
WITH NAP
ALL SIZES



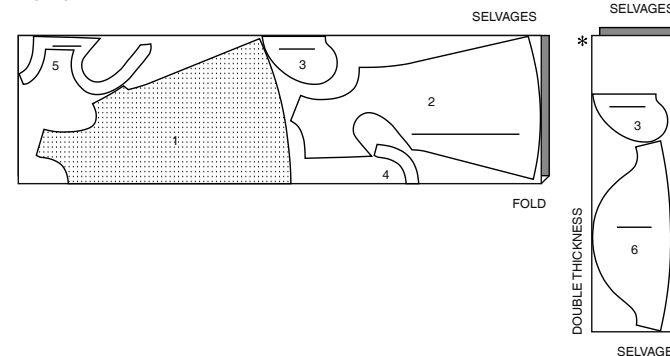
SELVAGES

FOLD

DRESS B

USE PIECES: 1 2 3 4 5 6

45" (115 CM)
WITH NAP
ALL SIZES



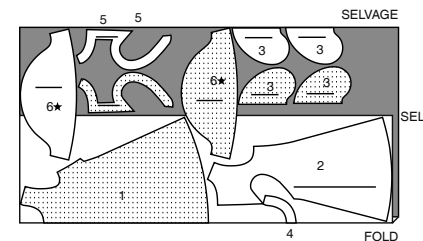
SELVAGES

FOLD

SELVAGES

SELVAGES

60" (150 CM)
WITH NAP
SIZES 4 6 8 10 12 14

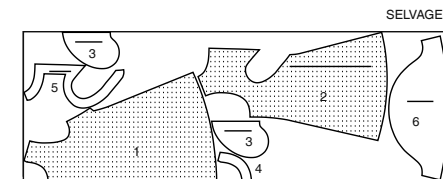


SELVAGE

SEL

FOLD

60" (150 CM)
WITH NAP
SIZES 16 18 20 22

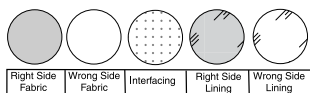


SELVAGES

FOLD

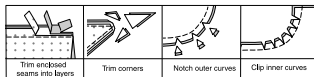
SEWING INFORMATION

FABRIC KEY



SEAM ALLOWANCES

Use 5/8" (1.5cm) seam allowances unless otherwise indicated.



PIN AND FIT

Pin or baste seams, **RIGHT SIDE TOGETHER**, matching notches. Fit garment before stitching major seams.

PRESS

Press seam allowances flat; then open unless otherwise stated. Clip where necessary so they lie flat.

GLOSSARY

Sewing terms appearing in **BOLD TYPE** in Sewing Instructions are explained below.

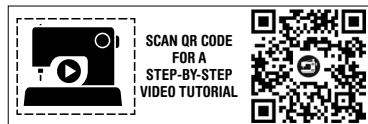
FINISH - Stitch 1/4" (6mm) from raw edge and finish with one of the following: (1) Pink OR (2) Overcast OR (3) Turn in along stitching and stitch close to fold OR (4) Overlock.

GATHER - Stitch along seamline and again 1/4" (6mm) away in seam allowance, using long machine stitches. Pull thread ends when adjusting to fit.

NARROW HEM - Turn in hem; press, easing in fullness if necessary. Open out hem. Turn in again so raw edge is along crease; press. Turn in along crease; stitch.

SLIPSTITCH - Slide needle through a folded edge, then pick up a thread of underneath fabric.

UNDERSTITCH - Open out facing or underside of garment; stitch to seam allowance close to seam.



@alissahthreads

PATTERN PIECES WILL BE IDENTIFIED BY NUMBERS THE FIRST TIME THEY ARE USED.

STITCH 5/8" (1.5CM) SEAMS WITH RIGHT SIDES TOGETHER UNLESS OTHERWISE STATED.

SEWING DIRECTIONS

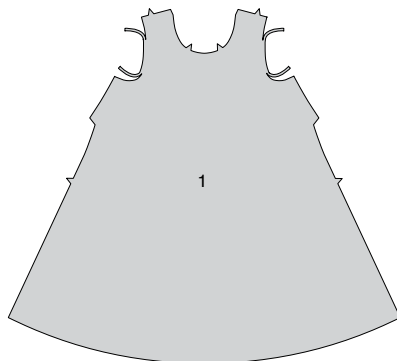
DRESS A, B

NOTE: Under each sub-heading, the first View will be illustrated, unless otherwise indicated.

FRONT AND BACK

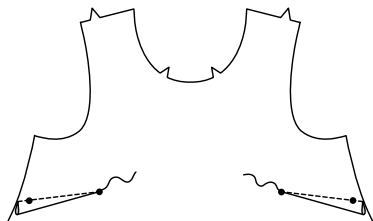
VIEW A:

1. Trim away 1/4" (6mm) from armhole edges of **FRONT** (1).

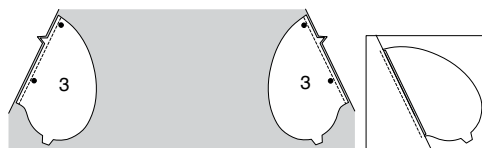


VIEWS A,B:

2. Stitch darts in front (1). Press darts down.

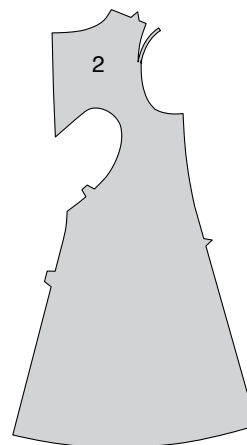


3. Stitch one **POCKET** (3) section to front at each side in 1/4" (6mm) seam. Press seams toward pockets. **NOTE:** Remaining pocket sections will be used for back.



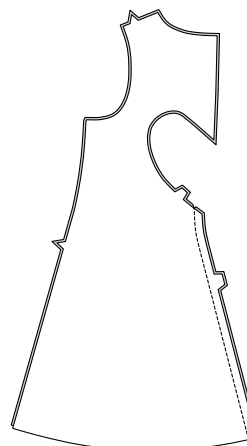
VIEW A:

4. Trim away 1/4" (6mm) from armhole edges of **BACK** (2).

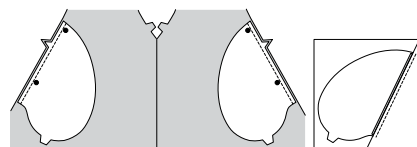


VIEWS A, B:

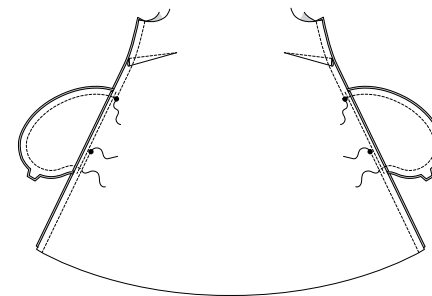
5. Stitch back (2) sections together at lower center back edge, as shown.



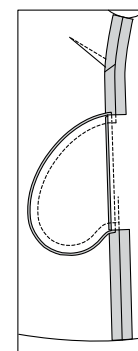
6. Stitch one remaining pocket section to back at each side in 1/4" (6mm) seam. Press seams toward pockets.



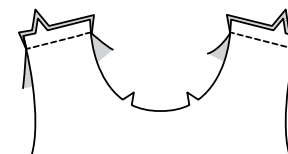
7. Stitch front and back together at sides, leaving open between large dots. Stitch pocket edges together to side seams. Clip back seam allowances above and below pockets.



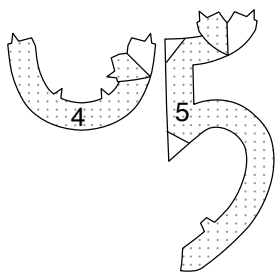
8. Turn pockets toward front along seamlines; press.



9. Stitch front to back at shoulders.



10. Trim outer corners of interfacing. Pin INTERFACING (4) and INTERFACING (5) to wrong side of FRONT FACING (4) and BACK FACING (5). Fuse, following manufacturer's instructions.

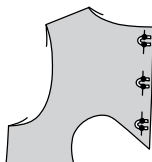


11. Stitch back facing sections to front facing sections at shoulder, and together at lower center back edges, as shown.

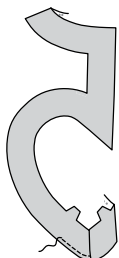


12. Cut three pieces of 1/8"(3mm) wide elastic 1 3/4"(4.5cm) long.

Pin elastic to LEFT back opening edges, placing ends over small dots and even with back edge, forming three loops. Baste.



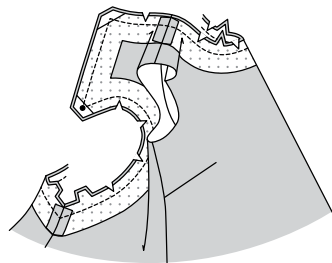
13. FINISH inner, unnotched edges of facing.



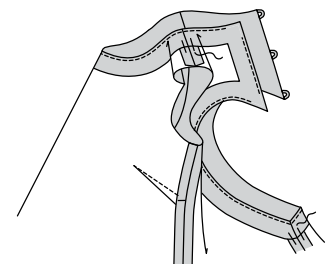
14. With RIGHT sides together, pin facing to dress, matching notches, shoulder seams and lower small dots.

Stitch, pivoting at corners and small dot. Trim. Clip curves.

UNDERSTITCH facing as far as possible.

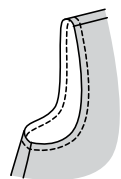


15. Turn facing to INSIDE; press. Tack facing at shoulders and center back seam.

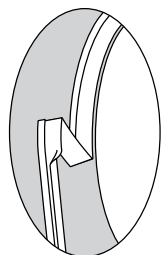


ARMHOLE A

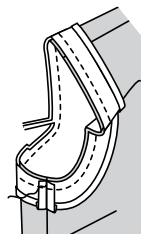
16. To prevent armhole edge from stretching, stitch 1/4"(6mm) from raw edge.



17. Open out one folded edge of bias tape; press out crease on "narrow" side by pressing lightly. Press to shape tape following armhole edge.

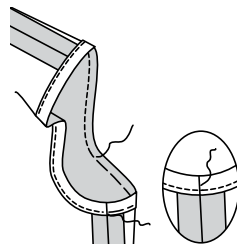


18. Pin bias tape to armhole edge, having raw edges even, turning in ends to meet at side seam, as shown. Stitch in 3/8"(1cm) seam. Trim seam to a scant 1/4"(6mm).



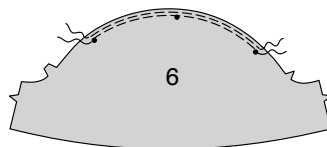
19. Turn bias tape to inside along seam. Press. **SLIPSTITCH** ends. Baste in place.

On OUTSIDE, stitch along basting.

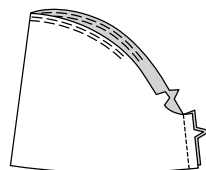


SLEEVE B

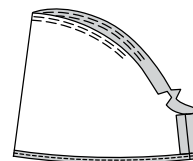
20. GATHER upper edge of SLEEVE (6) between outer small dots.



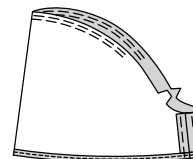
21. Stitch sleeve seam.



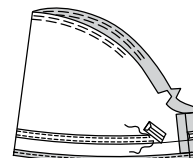
22. Make **NARROW HEM** at lower edge of sleeve.



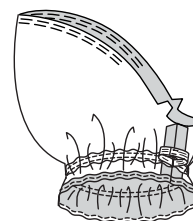
23. For easier insertion of elastic, baste about 1 1/2"(3.8cm) of seam allowance in place at casing area.



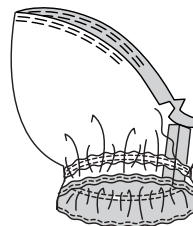
24. To form casing, on inside, place lower edge of bias tape along placement line, turning in ends to meet at sleeve seam. Pin in place. Stitch close to both long edges.



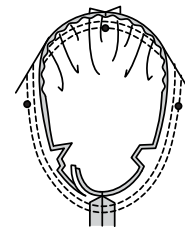
25. Cut elastic the length of ELASTIC GUIDE FOR SLEEVE (7). Insert elastic through casing. Lap ends; hold with safety pin. Stitch ends of elastic securely.



26. SLIPSTITCH opening edges of bias tape.

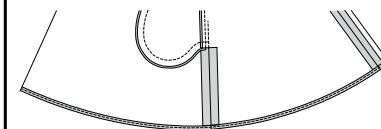


27. With RIGHT sides together, pin sleeve into armhole, placing center small dot at shoulder seam. Adjust gathers; baste. Stitch. Stitch again 1/4"(6mm) away in seam allowance. Trim close to stitching. Press seam allowances flat. Turn seam toward sleeve.

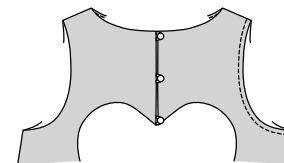


FINISHING

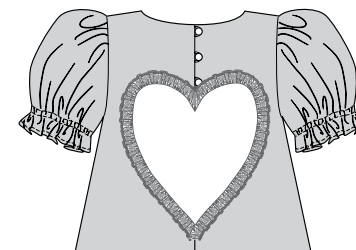
28. Make **NARROW HEM** at lower edge of dress.



29. On OUTSIDE, sew buttons to RIGHT back opening edge, opposite loops.



OPTIONAL:
30. On OUTSIDE, pin lace trim to back heart cutout, diagonally folding trim at corners. Sew in place, checking that upper edges of trim meet when dress is buttoned.





Congrats!

You've completed your sewing adventure

SHARE YOUR LOOK



Post your pattern and tag us
[@simplicity_creative_group](#) and [#knowMepatterns](#)
for a chance to be featured on our social media.

Look for more PDF patterns at [simplicity.com](https://www.simplicity.com)

Have a question or need help with your sewing project call us at
1-800-782-0323



KnowMe ©2024 a division of IG Design Group Americas Inc. • Atlanta, GA 30342 USA www.thedesigngroup.com • All Rights Reserved. www.mccall.com • Made in the U.S.A. Fabriqué aux États-Unis.
To be used for individual private home use only and not for commercial or manufacturing purposes. • A usage privé seulement et non à des fins commerciales ou de production en série. • Para uso privado solamente, no se puede utilizar con propósitos de comercialización o de producción en serie.