



RAVEN MAUREEN

knowME™

BY MIMI G

ME2107



A
B



A
C

Scan QR code for a Sew-Along video tutorial.



@ravenmaureen_



Designed and printed in USA

Average

MISSES' AND MISS PETITE TOP (WITH A/B, C, D CUP SIZES) AND SKIRT IN TWO LENGTHS

Suggested Fabrics: Boucle, Cotton Blends, Denim, Gabardine, Jacquard, Linen Blends, Pique, Stretch Wovens, Suiting, Tweed. **Lining:** Cotton Blends, Polyester Blends. **Interfacing:** Lightweight Fusible.

Notions: A, B, C: ⅝" (2.2cm) buttons: Four for A, five for B, nine for C.

Sizes	8	10	12	14	16	18	20	22	24	26
European	34	36	38	40	42	44	46	48	50	52

BODY MEASUREMENTS: Select pattern size based on body measurements										
Bust	31½	32½	34	36	38	40	42	44	46	48 Ins.
Waist	24	25	26½	28	30	32	34	37	39	41 "
Hip-9" below waist	33½	34½	36	38	40	42	44	46	48	50 "
Back-neck to waist	15¾	16	16¼	16½	16¾	17	17¼	17½	17¾	18 "

Top A	45**	1½	1½	1½	1½	1½	1½	1½	1½	1½ Ins.
	60**	¾	¾	¾	¾	¾	1	1	1	1 "
Lining	45**	¾	¾	¾	¾	¾	¾	¾	¾	¾ "
Interfacing	20"	- ¾ yd.								

Skirt B	45**	1¼	1¼	1¼	1¾	1¾	1½	1½	1½	1½ Ins.
	60**	1	1	1	1	1½	1½	1½	1¼	1¼ "

Interfacing	20"	- ¾ yd.								
Lining B, C	45***	- ½ yd.								

Skirt C	45**	2½	2½	2½	2½	2½	2½	2½	2½	2½ Ins.
	60**	1¾	1¾	1¾	2	2½	2½	2½	2½	2½ "

Interfacing	20"	- 1½ yds.								
-------------	-----	-----------	--	--	--	--	--	--	--	--

NOTE: Please refer to the sewing instructions for **FINISHED GARMENT MEASUREMENTS**.

*with nap **without nap

Moins Facile

HAUT (AVEC TAILLES DE BONNET A/B, C, D) ET JUPE EN DEUX LONGUEURS POUR JEUNES FEMMES ET PETITS JEUNES FEMMES

Tissus Conseillés: Bouclé, Cotonnades, Denim, Gabardine, Jacquard, Lin mélangé, Piqué, Tissus tissés extensibles, Tissus pour costumes, Tweed. **Doublure:** Cotonnades, Mélanges de polyester.

Entoilage: Thermocollant léger.

Mercerie: A, B, C: Boutons de 2.2cm: 4 pour A, 5 pour B, 9 pour C.

Tailles	8	10	12	14	16	18	20	22	24	26
Françaises	36	38	40	42	44	46	48	50	52	54
Européen	34	36	38	40	42	44	46	48	50	52

MESURES DU CORPS: Choisissez la taille du patron basée sur les mesures du corps										
Poitrine	80	83	87	92	97	102	107	112	117	122 cm
Taille	61	64	67	71	76	81	87	94	99	104 "
Hanches (23cm au-dessous de la taille)	85	88	92	97	102	107	112	117	122	127 cm

Dos du cou à la taille	40	40.5	41.5	42	42.5	43	44	44.5	45	46 "
------------------------	----	------	------	----	------	----	----	------	----	------

Haut A	115cm*	1.0	1.0	1.0	1.0	1.0	1.0	1.1	1.3	1.3 m
	150cm*	0.8	0.8	0.8	0.8	0.8	0.8	0.9	0.9	0.9 "

Doublure	115cm*	0.7	0.7	0.7	0.7	0.7	0.7	0.8	0.8	0.8 "
Entoilage	51cm	- 0.6m								

Jupe B	115cm*	1.1	1.1	1.1	1.3	1.3	1.4	1.4	1.5	1.5 m
	150cm*	0.9	0.9	0.9	0.9	0.9	1.0	1.0	1.1	1.1 "

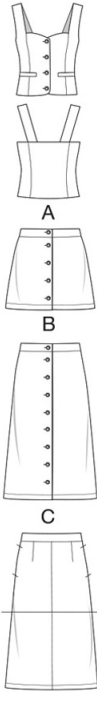
Entoilage	51cm	- 0.8m								
Doublure B, C	115cm**	- 0.5m								

Jupe C	115cm*	1.9	1.9	1.9	1.9	2.3	2.3	2.3	2.4	2.5 m
	150cm*	1.6	1.6	1.7	1.8	1.9	1.9	1.9	1.9	1.9 "

Entoilage	51cm	- 1.0m								
-----------	------	--------	--	--	--	--	--	--	--	--

NOTE: S'il vous plaît, reportez-vous aux instructions de couture pour les **MESURES DU VÊTEMENTS FINI**.

*avec sens **sans sens

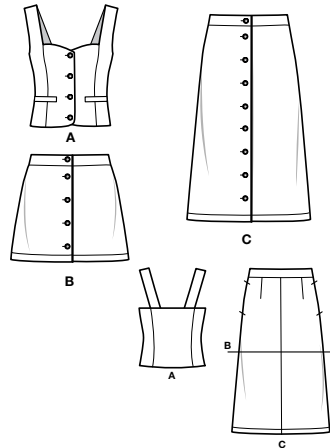




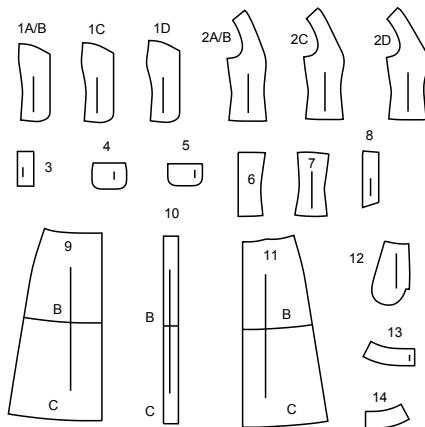
SCAN QR CODE
FOR A
STEP-BY-STEP
VIDEO TUTORIAL



@ravenmaureen_



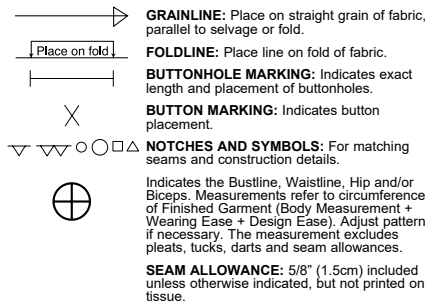
14 PATTERN PIECES



1A/B FRONT - A (A/B CUP)
1C FRONT - A (C CUP)
1D SIDE FRONT - A (D CUP)
2A/B SIDE FRONT - A (A/B CUP)
2C SIDE FRONT - A (C CUP)
2D SIDE FRONT - A (D CUP)
3 WELT - A
4 POCKET - A
5 POCKET LINING - A

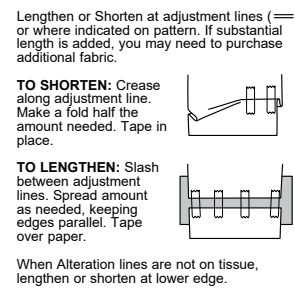
6 BACK - A
7 SIDE BACK - A
8 SHOULDER STRAP - A
9 FRONT - B,C
10 FRONT INTERFACING - B,C
11 BACK - B,C
12 POCKET - B,C
13 FRONT WAISTBAND - B,C
14 BACK WAISTBAND - B,C

PATTERN MARKINGS



GRAINLINE: Place on straight grain of fabric, parallel to selvage or fold.
FOLDLINE: Place line on fold of fabric.
BUTTONHOLE MARKING: Indicates exact length and placement of buttonholes.
BUTTON MARKING: Indicates button placement.
NOTCHES AND SYMBOLS: For matching seams and construction details.
Indicates the Bustline, Waistline, Hip and/or Biceps. Measurements refer to circumference of Finished Garment (Body Measurement + Wearing Ease + Design Ease). Adjust pattern if necessary. The measurement excludes pleats, tucks, darts and seam allowances.
SEAM ALLOWANCE: 5/8" (1.5cm) included unless otherwise indicated, but not printed on tissue.

ADJUST IF NECESSARY



Lengthen or Shorten at adjustment lines (==) or where indicated on pattern. If substantial length is added, you may need to purchase additional fabric.
TO SHORTEN: Crease along adjustment line. Make a fold half the amount needed. Tape in place.
TO LENGTHEN: Slash between adjustment lines. Spread amount as needed, keeping edges parallel. Tape over paper.
When Alteration lines are not on tissue, lengthen or shorten at lower edge.

CUTTING AND MARKING



SHRINK FABRIC if not labeled pre-shrunk. Press.
CIRCLE LAYOUT for View, Size, Fabric Width.
Use **WITH NAP** layout for fabrics with one-way designs, nap, pile or surface shading. Because most knits have surface shading, a with nap layout is used.
For **DOUBLE THICKNESS (WITH FOLD)** - fold fabric with right sides together.
***DOUBLE THICKNESS (WITHOUT FOLD)** - For fabrics with nap, fold fabric crosswise, right sides together. Mark as shown. Cut along crosswise fold of fabric (A). Turn upper layer 180° so arrows go in same direction and place over lower layer, right sides together (B).
For **SINGLE THICKNESS** - place fabric right side up. (For Fur Pile fabrics, place pile side down.)

★ Cut other pieces first, allowing enough fabric to cut this piece. Open fabric. For "Cut 1" pieces, cut piece once on single layer of fabric with piece face up on right side of fabric.
Pattern may have cutting lines for several sizes. Select the proper cutting line or pattern pieces for your size.
Before **CUTTING** place all pieces on fabric according to layout. Pin. (Layouts show approximate position of pattern pieces; position may vary according to your pattern size.) Cut **ACCURATELY**, cutting notches outward.
Before removing pattern, **TRANSFER MARKINGS** and lines of construction to Wrong Side of fabric, using the Pin and Chalk Pencil method or Tracing Paper and Dressmaker Wheel. Markings needed on right side of fabric should be thread traced.
NOTE: Broken-line boxes (at bl cl) in layouts represent pieces cut by measurements provided.

Sizes	8	10	12	14	16	18	20	22	24	26
European	34	36	38	40	42	44	46	48	50	52

FINISHED GARMENT MEASUREMENTS (Includes Design and Wearing Ease)

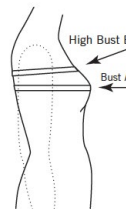
A/B Bust Cup	35	36	37½	39½	41½	43½	45½	47½	49½	51½	Ins.
C Bust Cup	36	37	38½	40½	42½	44½	46½	48½	50½	52½	"
D Bust Cup	37	38	39½	41½	43½	45½	47½	49½	51½	53½	"
A Waist	30	31	32½	34½	36½	38½	40½	42½	44½	46½	"
B,C Waist	25	26	27½	29½	31½	33½	35½	37½	39½	41½	"
B,C Hip	43	44	45½	47½	49½	51½	53½	55½	57½	59½	"
Width, lower edge											
Top A	34	35	36½	38½	40½	42½	44½	46½	48½	50½	Ins.
Skirt B	43½	44½	46	48	50	52	54	56	58	60	"
Skirt C	55	56	57½	59½	61½	63½	65½	67½	69½	71½	"
Finished back length from base of neck											
Top A	18½	19	19½	19½	19½	20	20½	20½	20½	21	Ins.
Finished back length from waist											
Skirt B	16	16	16	16	16	16	16	16	16	16	Ins.
Skirt C	34	34	34	34	34	34	34	34	34	34	"

THE FIT THAT MAKES THE FASHION....HOW TO DETERMINE YOUR BUST CUP SIZE

No two people have exactly the same shape even though they may take the same size. If you are an A/B, C or D cup, you can now customize the fit of your garment without having to make time consuming adjustments. Simplicity has done this for you by including separate front and side front pattern pieces. Choose the front and side front pattern for your particular cup size.

FOR VIEW A - To check your cup size, take your bust (A) and high bust (B) measurements and record them.

- If your bust is 1" to 2" (2.5cm-5cm) larger than your high bust measurement, you are an **A/B cup**. Use front pattern 1-A/B, side front pattern 2-A/B.
- If your bust is 2" to 3" (5cm-7.5cm) larger than your high bust measurement, you are a **C cup**. Use front pattern 1C, side front pattern 2C.
- If your bust is 3" to 4" (7.5cm-10cm) larger than your high bust measurement, you are a **D cup**. Use front pattern 1-D, side front pattern 2-D.



CUTTING LAYOUTS

RIGHT SIDE OF PATTERN	WRONG SIDE OF PATTERN	RIGHT SIDE OF FABRIC	WRONG SIDE OF FABRIC

TOP A

USE PIECES: 1 (A/B,C,D)
2 (A/B,C,D) 3 4 6 7 8

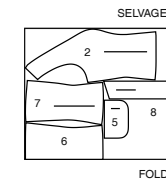
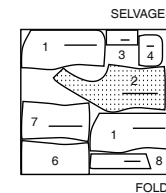
45" (115CM)
WITH NAP
ALL SIZES



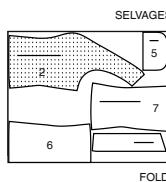
LINING

USE PIECES: 2 (A/B,C,D) 5 6 7 8

45" (115CM)
WITHOUT NAP
SIZES 8 10 12 14 16 18 20



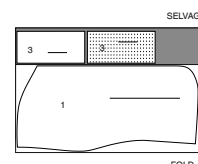
45" (115CM)
WITHOUT NAP
SIZES 22 24 26



INTERFACING A

USE PIECES: 1 3

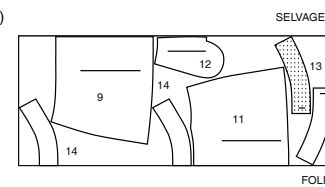
20" (51 CM)
ALL SIZES



SKIRT B

USE PIECES: 9 11 12 13 14

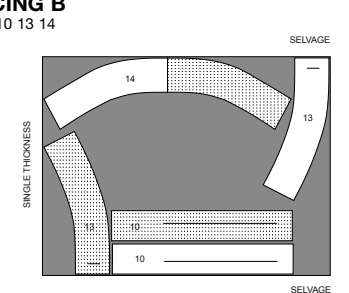
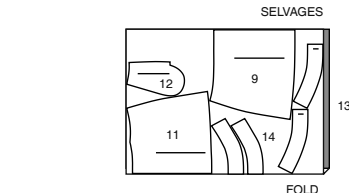
45" (115CM)
WITH NAP
ALL SIZES



INTERFACING B

USE PIECES: 10 13 14

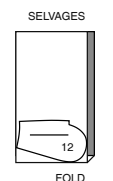
20" (51 CM)
ALL SIZES



LINING B,C

USE PIECE: 12

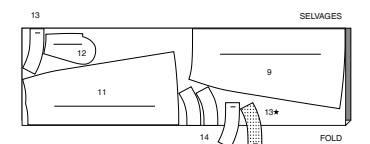
45" (115CM)
WITHOUT NAP
ALL SIZES



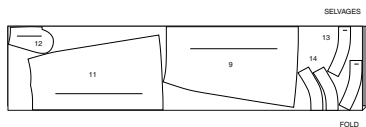
SKIRT C

USE PIECES: 9 11 12 13 14

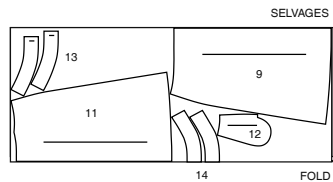
45" (115CM)
WITH NAP
SIZES 8 10 12 14



45" (115CM)
WITH NAP
SIZES 16 18 20 22 24 26



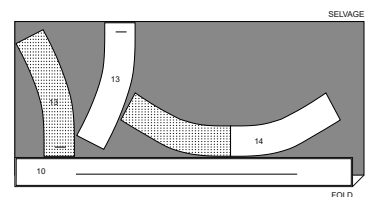
60" (150CM)
WITH NAP
ALL SIZES



INTERFACING C

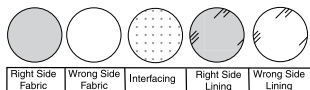
USE PIECES: 10 13 14

20" (51 CM)
ALL SIZES



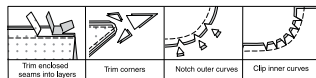
SEWING INFORMATION

FABRIC KEY



SEAM ALLOWANCES

Use 5/8" (1.5cm) seam allowances unless otherwise indicated.



PIN AND FIT

Pin or baste seams, RIGHT SIDE TOGETHER, matching notches. Fit garment before stitching major seams.

PRESS

Press seam allowances flat; then open unless otherwise stated. Clip where necessary so they lie flat.

GLOSSARY

Sewing terms appearing in **BOLD TYPE** in Sewing Instructions are explained below.

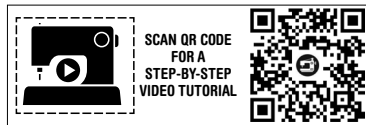
EASESTITCH - Stitch along seamline, using long machine stitches. Pull thread ends when adjusting to fit.

EDGESEITCH - Stitch close to finished edge or seam.

SLIPSTITCH - Slide needle through a folded edge, then pick up a thread of underneath fabric.

STAYSTITCH - Stitch 1/8" (3mm) from seamline in seam allowance (usually 1/2" (13mm) from raw edge).

UNDERSTITCH - Open out facing or underside of garment; stitch to seam allowance close to seam.



@ravenmaureen_

PATTERN PIECES WILL BE IDENTIFIED BY NUMBERS THE FIRST TIME THEY ARE USED.

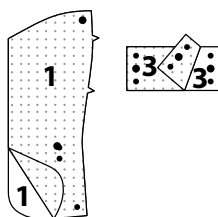
STITCH 5/8" (1.5CM) SEAMS WITH RIGHT SIDES TOGETHER UNLESS OTHERWISE STATED.

SEWING DIRECTIONS

TOP A

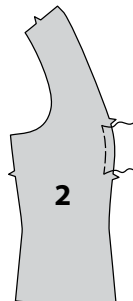
INTERFACING

1. Fuse INTERFACING to WRONG side of each matching FABRIC section, following manufacturer's instructions.

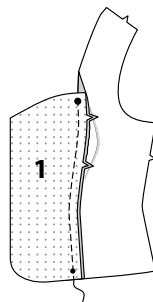


FRONT AND BACK

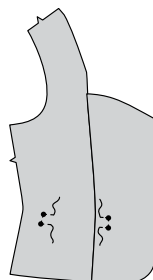
2. **EASESTITCH** side edge of SIDE FRONT (2) between notches, as shown.



3. Pin side front sections to each interfaced FRONT (1) section, RIGHT sides together, matching notches, stitching lines, and large and small dots. Stitch below large dot. Uninterfaced fronts will be used as facings.



4. **REINFORCE** fronts along corners of stitching lines, pivoting at small dots, as shown.



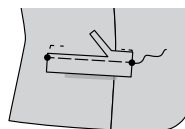
5. With RIGHT sides together, fold each WELT (3) section in half, lengthwise. Stitch ends. Trim.



6. Turn RIGHT side out. Press. Baste raw edges together.



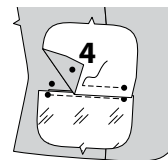
7. Pin welt to front, placing seamline along lower stitching line, matching small dots. Baste. Trim welt seam allowance to a scant 1/4" (6mm), being careful not to cut front.



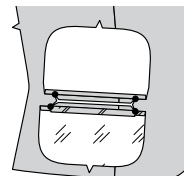
8. With RIGHT sides together, pin POCKET LINING (5) to front (over welt), matching small dots, placing seamline along lower stitching line. Baste. Stitch between small dots. Trim lining seam allowance to a scant 1/4" (6mm), being careful not to cut front.



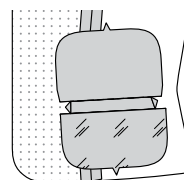
9. With RIGHT sides together, pin POCKET (4) to front, placing seamline along upper stitching line, matching small dots. Stitch between small dots. Trim pocket seam allowance to a scant 1/4" (6mm), being careful not to cut front.



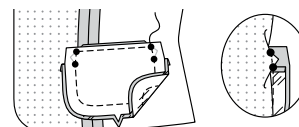
10. Cut front and side front along slash line between stitching, clipping diagonally to small dots, being careful not to cut welt or pockets.



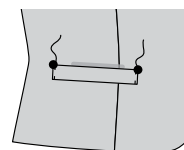
11. Turn pocket, pocket lining, and triangular ends to inside, turning welt up. Press.



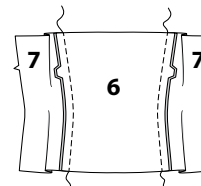
12. Stitch pocket edges together, catching in triangular ends and keeping front and welt free.



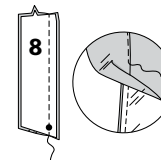
13. On OUTSIDE, pin ends of welt to front matching large dots. **EDGESEITCH** ends.



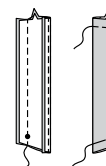
14. Stitch SIDE BACK (7) sections to side edges of BACK (6) matching notches.



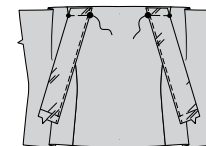
15. Pin one SHOULDER STRAP (8) section cut of FABRIC to one cut of LINING, RIGHT sides together, matching large dots. Stitch long edge. Trim. **UNDERSTITCH** lining.



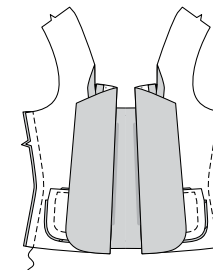
16. Pin remaining long edges of shoulder strap, RIGHT sides together, matching small dots. Stitch. Turn RIGHT sides out. Press. Baste raw edges together.



17. Pin shoulder strap to upper edge of back matching small and large dots. Baste.

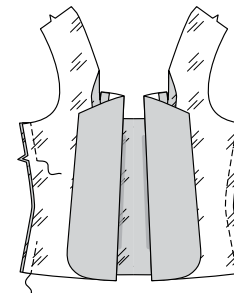


18. Stitch back to front at sides.

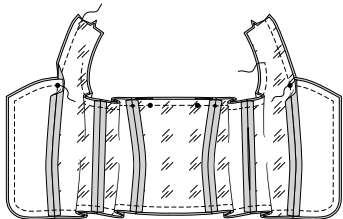


LINING

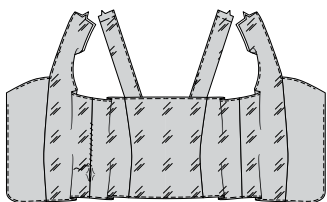
19. Stitch seams in front FACING and side front LINING sections same as front. Stitch seams in back LINING sections same as back. Stitch back lining to front lining at sides, leaving an opening in one side seam for turning.



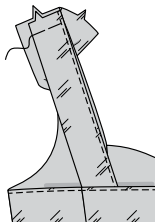
20. Pin facing/lining to top, RIGHT sides together, matching centers, seams, and large and small dots. Stitch neck, front and lower edges, breaking stitching at large dot. Stitch back and armhole edges stopping 3" (7.5cm) below upper edge of armhole. **UNDERSTITCH** facing and lining as far as possible.



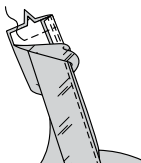
21. Turn lining to inside through opening in lining. Press. **SLIPSTITCH** opening closed.



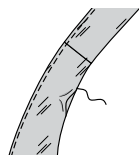
22. Open out upper edge of front lining at shoulder. With RIGHT sides together, pin shoulder strap to front matching notches. Baste.



23. Pin shoulder edge of lining to top over strap, RIGHT sides together. Stitch shoulder seam. Trim.

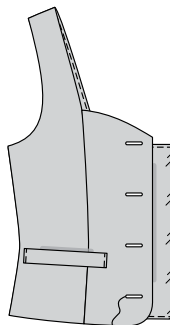


24. Turn lining down, turning in remaining armhole edges along seamlines. Press. **SLIPSTITCH** pressed edges together.

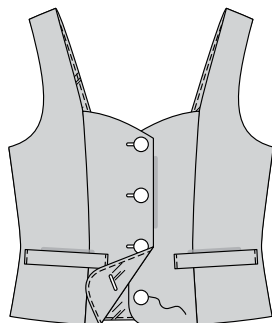


FINISHING

25. Make buttonholes in right front at markings.



26. Lap right front over left front matching center fronts. Mark positions for buttons using buttonholes as a guide. Sew buttons to markings.

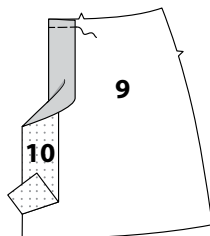


SKIRT B, C

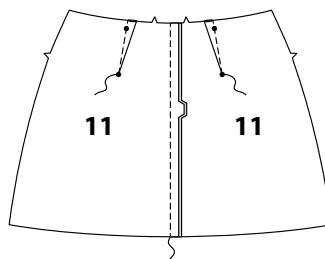
NOTE: View B will be illustrated unless otherwise mentioned.

FRONT AND BACK

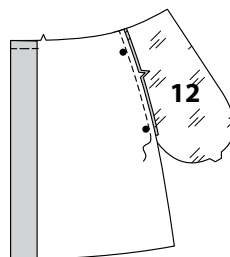
1. Fuse FRONT INTERFACING (10) to WRONG side of FRONT (9), having raw edges even. For self-facing, turn front edge to INSIDE along foldline. Press. Baste upper edge.



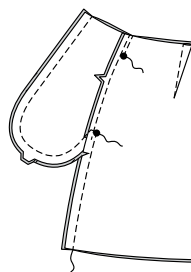
2. Stitch dart in BACK (11). Press dart toward center. Stitch backs, RIGHT sides together at center back seam.



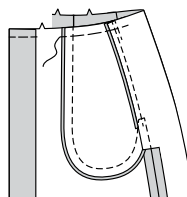
3. Pin POCKET (12) LINING sections to side edge of fronts, matching notches and large dots. Stitch using 3/8" (1cm) seam. Press seam toward pockets.



4. Stitch pockets cut from fabric to side edges of back in same manner. Pin back to front at sides. Stitch, leaving free between large dots. Stitch pocket edges together to side seams. Clip back seam allowances below pockets.

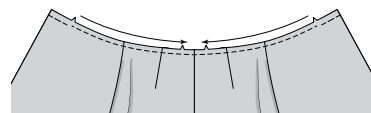


5. Turn pockets toward front along seamlines. Baste upper edge.

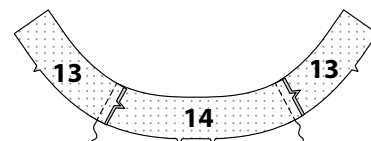


WAISTBAND

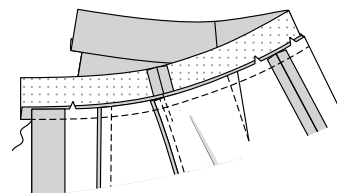
6. **STAYSTITCH** upper edge of skirt between front notches in direction of arrows.



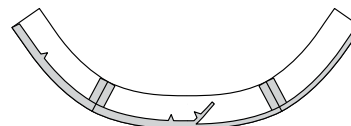
7. Fuse INTERFACING to WRONG sides of two FRONT WAISTBAND (13) sections and one BACK WAISTBAND (14) section. With RIGHT sides together, stitch interfaced front waistband sections to side edges of back waistband.



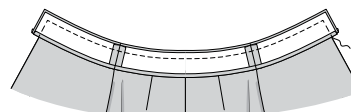
8. Pin waistband to upper edge of skirt matching centers, notches, and seams, clipping skirt to staystitching, as needed. Front edges of waistband extends 5/8" (1.5cm). Stitch. Trim. Press seam toward waistband.



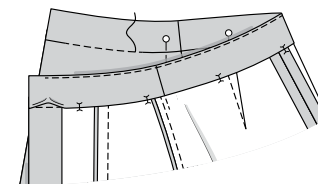
9. For FACING, stitch remaining waistband sections together at sides in same manner. Turn under 1/2" (1.3cm) on lower notched edge of facing. Press. Trim pressed seam allowance to 3/8" (1cm).



10. Pin facing to waistband, RIGHT sides together, matching centers and seams, having raw edges even. Stitch ends and upper edges. Trim. **UNDERSTITCH** facing.

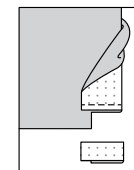


11. Turn facing to INSIDE. Press. On INSIDE, pin pressed edge of waistband facing over seam, placing pins on OUTSIDE. On OUTSIDE, stitch in the ditch of waistband seam, catching in pressed edge of facing on INSIDE.

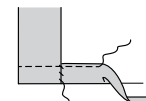


FINISHING

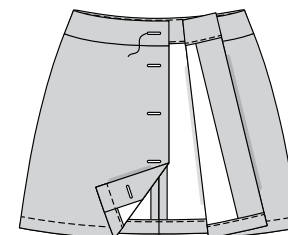
12. Turn self-facing to OUTSIDE at lower edge along foldline. Stitch across facing 1-1/4" (3.2cm) above lower edge. Trim facing 1/4" (6mm) from stitching. Trim skirt to within 5/8" (1.5cm) of inner edge of facing.



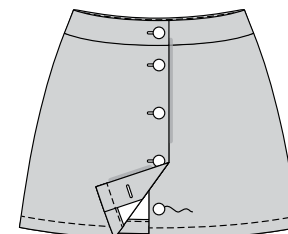
13. Turn facing to INSIDE, turning up 1-1/4" (3.2cm) hem. Turn under 1/4" (6mm) on raw edge. Press. Stitch close to inner edge of hem between opening edges. Hand sew facing to hem.



14. Make buttonholes in right front at markings.



15. Lap right front over left front matching centers. Mark button placement using buttonholes as a guide. Sew buttons to markings.





Congrats!

You've completed your sewing adventure

SHARE YOUR LOOK



Post your pattern and tag us
[@simplicity_creative_group](#) and [#knowMepatterns](#)
for a chance to be featured on our social media.

Look for more PDF patterns at [simplicity.com](https://www.simplicity.com)

Have a question or need help with your sewing project call us at
1-800-782-0323



KnowMe ©2024 a division of IG Design Group Americas Inc. • Atlanta, GA 30342 USA www.thedesigngroup.com • All Rights Reserved. www.mccall.com • Made in the U.S.A. Fabriqué aux États-Unis.
To be used for individual private home use only and not for commercial or manufacturing purposes. • A usage privé seulement et non à des fins commerciales ou de production en série. • Para uso privado solamente, no se puede utilizar con propósitos de comercialización o de producción en serie.