



ME2106

NORRIS DANTA FORD
knowME
 BY mimi g

Average

MEN'S PANTS

Suggested Fabrics: Broadcloth, Chambray, Chino, Cotton Blends, Denim, Gabardine, Lightweight Stretch Wovens, Lightweight Twill, Lightweight Wool Blends, Linen Blends. **Lining:** Cotton Blends, Polyester Blends. **Interfacing:** Lightweight Fusible.

Notions: One 7" (18cm) zipper, ¾ yd. (0.7m) of 1½" (4cm) elastic, one ¾" (2cm) button.

Sizes	34	36	38	40	42	44	46	48	50	52
-------	----	----	----	----	----	----	----	----	----	----

BODY MEASUREMENTS: Select pattern size based on body measurements

	34	36	38	40	42	44	46	48	50	52	Ins.
Chest	34	36	38	40	42	44	46	48	50	52	Ins.
Waist	28	30	32	34	36	39	42	44	46	48	"
Hip	35	37	39	41	43	45	47	49	51	53	"

Pants

45"	2¾	2⅞	2⅞	2⅞	2⅞	2⅞	2⅞	2⅞	2⅞	2⅞	Yds.
60"	1¾	2	2¼	2¼	2¼	2¼	2½	2½	2½	2½	"

Lining - 45"*** - ⅝ yd.

Interfacing - 20" - ⅝ yd.

FINISHED GARMENT MEASUREMENTS (Includes Design and Wearing Ease)

Waist	32	34	36	38	40	42	44	46	48	50	Ins.
Hip	41	43	45	47	49	51	53	55	57	59	"
Width, each leg											
Pants	19½	20	20½	21	21½	22	22½	23	23½	24	Ins.
Finished side length from waist											
Pants	41¾	42	42¼	42½	42¾	43	43¼	43½	43¾	44	Ins.

*with nap **without nap

Moins Facile

PANTALON POUR HOMMES

Tissu Conseillé: Broadcloth, Chambray, Chino, Cotonnades, Denim, Gabardine, Tissus tissés extensibles légers, Twill léger, Lainages légers. **Doubleure:** Cotonnades, Mélanges de polyester. **Entoilage:** Thermocollant léger.

Mercurie: 1 fermeture à glissière de 18cm, 0.7m d'élastique de 4cm, 1 bouton de 2cm.

Tailles	34	36	38	40	42	44	46	48	50	52
---------	----	----	----	----	----	----	----	----	----	----

MESURES DU CORPS: Choisissez la taille du patron basée sur les mesures du corps

Poitrine	87	92	97	102	107	112	117	122	127	132	cm
Taille	71	76	82	87	92	99	107	112	117	122	"
Hanches (23cm au-dessous de la taille)	89	94	99	104	109	115	119	124	128	135	cm

Pantalon

115cm*	2.5	2.5	2.6	2.6	2.6	2.6	2.6	2.6	2.6	2.6	m
150cm*	1.5	1.8	2.1	2.1	2.1	2.1	2.3	2.4	2.4	2.4	"

Doubleure - 115cm** - 0.5m

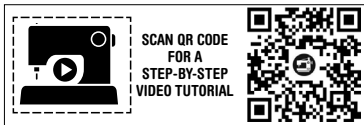
Entoilage - 51cm - 0.6m

MESURES DES VÊTEMENTS FINI (Motif et aisance de port compris)

Taille	81	86	91	97	102	107	112	117	122	127	cm
Hanches	104	109	114	119	124	130	135	140	145	150	"
Largeur, chaque jambe											
Pantalon	50	51	52	53	55	56	57	58	60	61	cm
Longueur finie – côté, taille à l'ourlet											
Pantalon	106	107	107	108	109	109	110	110	111	112	cm

*avec sens **sans sens

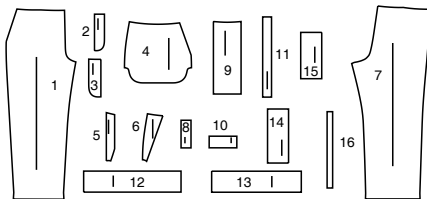




@norrisdantaford



16 PATTERN PIECES



- 1 Front
- 2 Right Fly
- 3 Left Fly Facing
- 4 Side Front and Pocket
- 5 Pocket Facing
- 6 Yoke Front
- 7 Back
- 8 Welt
- 9 Back Pocket
- 10 Back Pocket Facing
- 11 Carrier
- 12 Right Waistband
- 13 Left Waistband
- 14 Right Front Interfacing
- 15 Left Front Interfacing
- 16 Guide for Elastic

PATTERN MARKINGS

GRAINLINE: Place on straight grain of fabric, parallel to selvage or fold.

FOLDLINE: Place line on fold of fabric.

BUTTONHOLE MARKING: Indicates exact length and placement of buttonholes.

BUTTON MARKING: Indicates button placement.

NOTCHES AND SYMBOLS: For matching seams and construction details.

Indicates the Bustline, Waistline, Hip and/or Biceps. Measurements refer to circumference of Finished Garment (Body Measurement + Wearing Ease + Design Ease). Adjust pattern if necessary. The measurement excludes pleats, tucks, darts and seam allowances.

SEAM ALLOWANCE: 5/8" (1.5cm) included unless otherwise indicated, but not printed on tissue.

ADJUST IF NECESSARY

Lengthen or Shorten at adjustment lines (==) or where indicated on pattern. If substantial length is added, you may need to purchase additional fabric.

TO SHORTEN: Crease along adjustment line. Make a fold half the amount needed. Tape in place.

TO LENGTHEN: Slash between adjustment lines. Spread amount as needed, keeping edges parallel. Tape over paper.

When Alteration lines are not on tissue, lengthen or shorten at lower edge.

CUTTING AND MARKING

SHRINK FABRIC if not labeled pre-shrunk. Press.

CIRCLE LAYOUT for View, Size, Fabric Width.

Use **WITH NAP** layout for fabrics with one-way designs, nap, pile or surface shading. Because most knits have surface shading, a with nap layout is used.

For **DOUBLE THICKNESS (WITH FOLD)** - fold fabric with right sides together.

*** DOUBLE THICKNESS (WITHOUT FOLD)** - For fabrics with nap, fold fabric crosswise, right sides together. Mark as shown. Cut along crosswise fold of fabric (A). Turn upper layer 180° so arrows go in same direction and place over lower layer, right sides together (B).

For **SINGLE THICKNESS** - place fabric right side up. (For Fur Flee fabrics, place pile side down.)

★ Cut other pieces first, allowing enough fabric to cut this piece. Open fabric. For "Cut 1" pieces, cut piece once on single layer of fabric with piece face up on right side of fabric.

Pattern may have cutting lines for several sizes. Select the proper cutting line or pattern pieces for your size.

Before **CUTTING** place all pieces on fabric according to layout. Pin. (Layouts show approximate position of pattern pieces; position may vary according to your pattern size.) Cut **ACCURATELY**, cutting notches outward.

Before removing pattern, **TRANSFER MARKINGS** and lines of construction to Wrong Side of fabric, using the Pin and Chalk Pencil method or Tracing Paper and Dressmaker Wheel. Markings needed on right side of fabric should be thread traced.

NOTE: Broken-line boxes (a| b| c|) in layouts represent pieces cut by measurements provided.

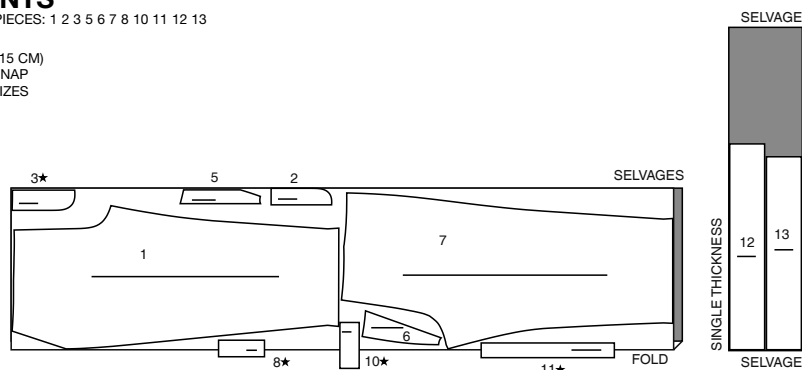
CUTTING LAYOUTS

RIGHT SIDE OF PATTERN	WRONG SIDE OF PATTERN	RIGHT SIDE OF FABRIC	WRONG SIDE OF FABRIC
-----------------------	-----------------------	----------------------	----------------------

PANTS

USE PIECES: 1 2 3 5 6 7 8 10 11 12 13

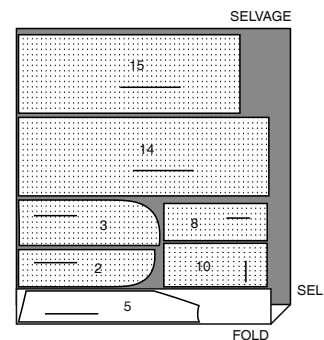
45" (115 CM)
WITH NAP
ALL SIZES



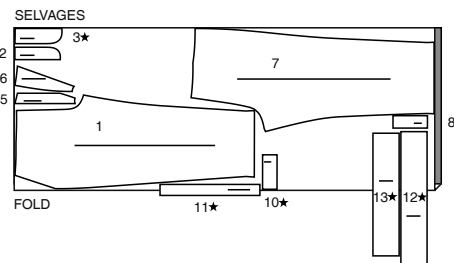
INTERFACING

USE PIECES: 2 3 5 8 10 14 15

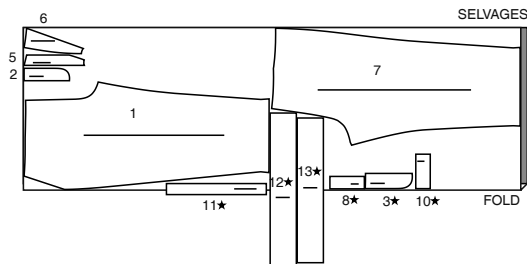
20" (51 CM)
ALL SIZES



60" (150 CM)
WITH NAP
SIZES 34 36 38 40 42 44



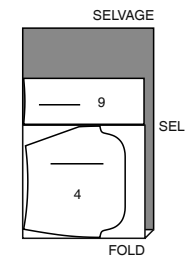
60" (150 CM)
WITH NAP
SIZES 46 48 50 52



LINING

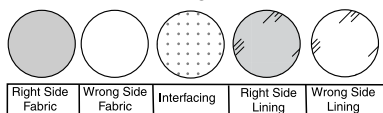
USE PIECES: 4 9

45" (115 CM)
WITHOUT NAP
ALL SIZES



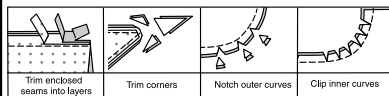
SEWING INFORMATION

FABRIC KEY



SEAM ALLOWANCES

Use 5/8" (1.5cm) seam allowances unless otherwise indicated.



PIN AND FIT

Pin or baste seams, **RIGHT SIDE TOGETHER**, matching notches. Fit garment before stitching major seams.

PRESS

Press seam allowances flat; then open unless otherwise stated. Clip where necessary so they lie flat.

GLOSSARY

Sewing methods in **BOLD TYPE** have Sewing Tutorial Video available. Scan QR CODE to watch videos:

EDGESTITCH - Stitch close to finished edge or seam.

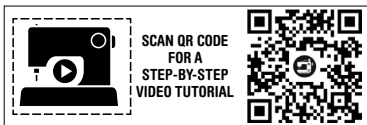
FINISH - Stitch 1/4"(6mm) from raw edge and finish with one of the following: (1) Pink OR (2) Overcast OR (3) Turn in along stitching and stitch close to fold OR (4) Overlock. **OPTIONAL FOR HEMS:** Apply Seam Binding.

REINFORCE - Stitch along seamline where indicated in sewing instructions, using small machine stitches.

STAYSTITCH - Stitch 1/2"(1.3mm) from seamline in seam allowance.

TOPSTITCH - On outside, stitch 1/4"(6mm) from edge, seam or previous stitching, using presser foot as guide, or stitch where indicated in instructions.

UNDERSTITCH - Open out facing or underside of garment; stitch to seam allowance close to seam.



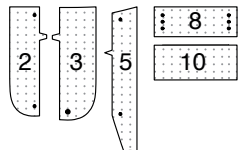
@norrisdantaford

SEWING DIRECTIONS

PANTS

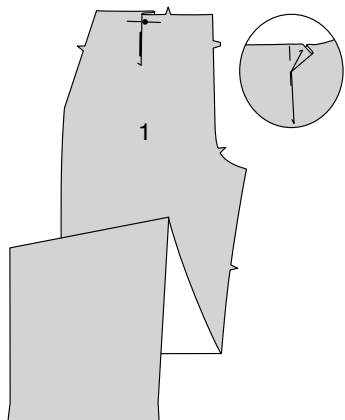
INTERFACING

1. Pin **INTERFACING** to wrong side of each matching **FABRIC** section. Fuse, following manufacturer's instructions.

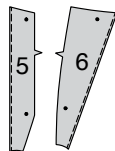


FRONT

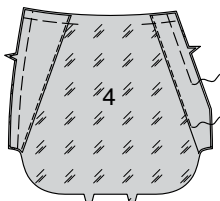
2. To make pleats in **FRONT (1)**, on **OUTSIDE**, fold along solid lines. Bring folds to broken lines; pin. Baste across raw edge.



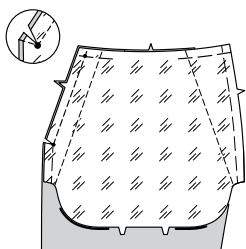
3. FINISH unmarked edge of **YOKE FRONT (6)** and **POCKET FACING (5)**.



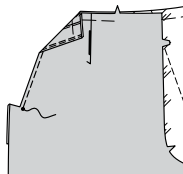
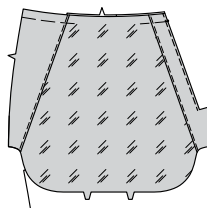
4. On **OUTSIDE**, pin yoke front and pocket facing sections to each side of **SIDE FRONT AND POCKET (4)**, matching small dots and notches. **EDGESTITCH** finished edge of facings in place. Baste raw edges together.



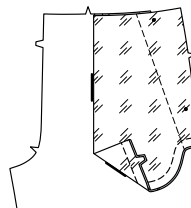
5. With **RIGHT** sides together and raw edges even, pin side front and pocket to front, matching small dots and notches. Stitch pocket facing edge. Trim seam.



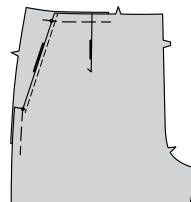
6. Turn pocket to **INSIDE**; press. **UNDERSTITCH** pocket. On **OUTSIDE**, **TOPSTITCH** pocket edge.



7. On **INSIDE**, with **RIGHT** sides together, fold side and pocket along fold line, having upper and lower raw edges even. Stitch double notched edge, as shown.



8. On **OUTSIDE**, lap pants front over yoke and pocket section, matching small dots, having raw edges even; pin. Baste side and upper edges together.



NOTE: Stitch zipper using an adjustable zipper foot.

9. A- Stitch front sections together at center front between large dot and notch.

B- Turn in **RIGHT** front opening edge along foldline; press.

C- Place closed zipper (face up) under **RIGHT** front opening edge, having pressed edge close to zipper teeth and zipper stop at small dot. Using a zipper foot, baste close to pressed edge.

D- With **RIGHT** sides together, pin **RIGHT FLY (2)** sections together, having raw edges even. Stitch curved edge, in a 3/8"(1cm) seam. Trim. Turn. Press. Baste raw edges.

E- On **INSIDE**, pin right fly to right front opening edge (over zipper), matching notches and small dots, having raw edges even. Baste along previous basting for zipper.

F- On **OUTSIDE**, using a zipper foot, stitch close to pressed edge of front through all layers.

G- FINISH outer edge of **LEFT FLY FACING (3)**. Pin fly facing to left front opening edge, matching notches and large dots. Stitch, ending at large dot. **UNDERSTITCH** fly facing. Turn facing to **INSIDE**.

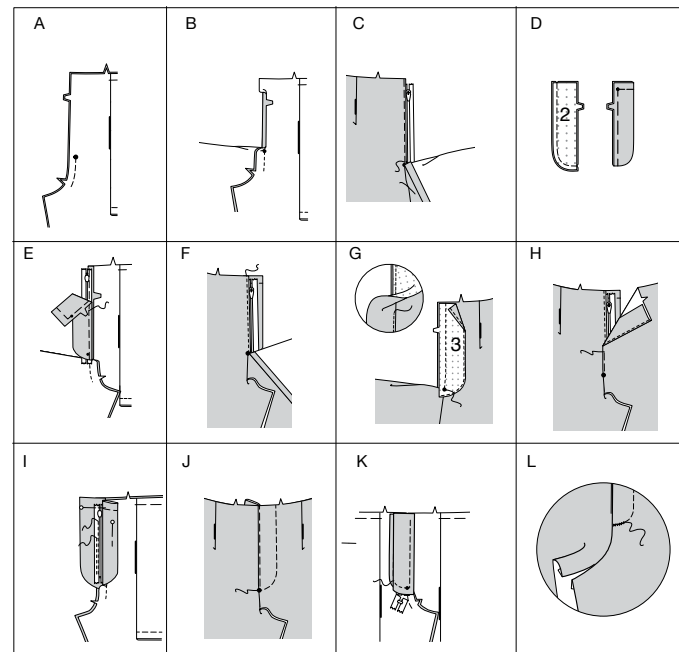
H- Lap left front over right, matching centers. Baste close to edge through all thicknesses.

I- Pin **RIGHT** fly out of the way. Open out fly facing. Pin remaining zipper tape to fly facing, keeping **LEFT** front free. Using a zipper foot, stitch in place close to zipper teeth and along center of zipper tape.

J- Turn facing down. On **OUTSIDE**, stitch **LEFT** front along stitching lines, keeping **RIGHT** fly free.

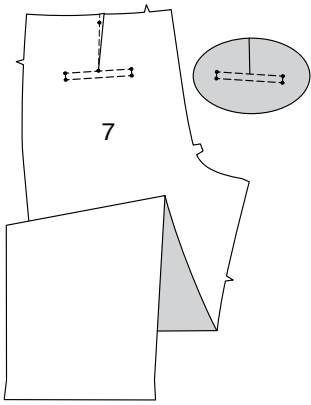
K- Turn **RIGHT** fly back in place. On **INSIDE**, hand tack fly and facing together at lower edge, as shown. Trim away excess zipper tape even with lower edge of fly, if needed.

L- If desired, on **OUTSIDE**, machine-stitch a bar tack across lower end of fly through all thicknesses.

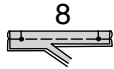


BACK

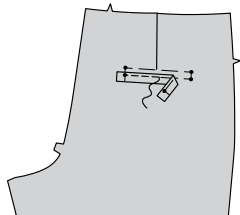
10. Stitch dart in BACK (7).
REINFORCE back along stitching lines, pivoting at small dots.



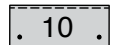
11. With wrong sides together, fold WELT (8) along foldline. Baste raw edges together. Trim seam allowances on long edge to a scant 1/4"(6mm).



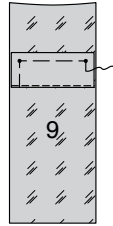
12. Pin welt to back, placing seamline along lower stitching line. Baste.



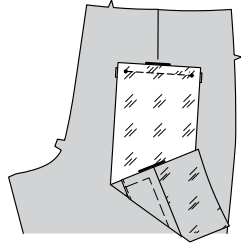
13. **FINISH** long unmarked edge of BACK POCKET FACING (10).



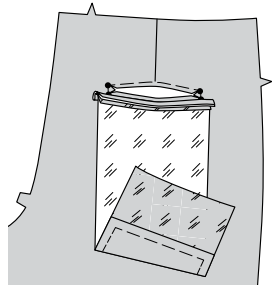
14. Pin **WRONG** side of pocket facing to **RIGHT** side of BACK POCKET (9), matching inner small dots, having raw edges even. **EDGESTITCH** lower edge in place. Baste raw edges together and along facing upper seam line, as shown.



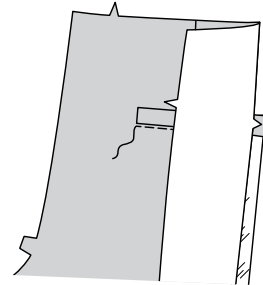
15. With right sides together, pin straight end of back pocket to back along lower stitching line, matching symbols. Stitch along stitching line between small dots.



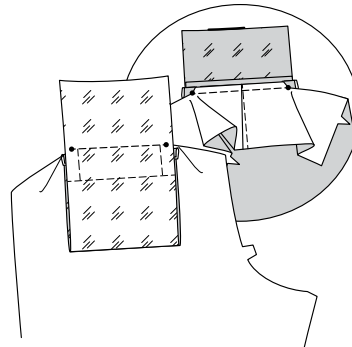
16. Slash along line, clipping diagonally to small dots, being careful not to cut welt.



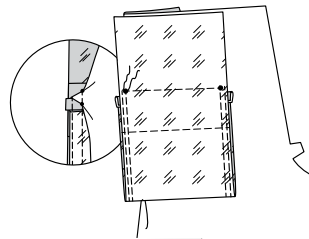
17. Turn pocket and triangular ends to inside, pulling ends of welt between triangular ends, as shown. Press. **EDGESTITCH** back along lower edge of welt.



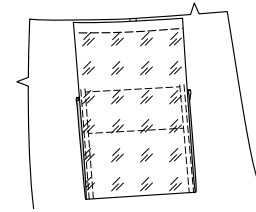
18. With right sides together, fold back pocket along foldline, having raw edges even at sides. Pin back pocket to back, matching symbols. Stitch along stitching line between small dots, keeping back free.



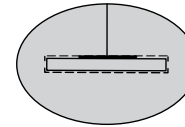
19. Stitch pocket edges together; catching welt and triangular ends, keeping back free. Stitch again 1/4"(6mm) away in seam allowance, as shown.



20. Pin back pocket to back at upper edge; baste raw edges together.

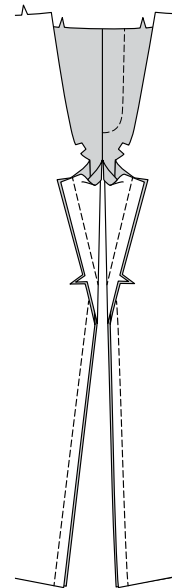


21. On **OUTSIDE**, **EDGESTITCH** remaining outer edges of back around welt.

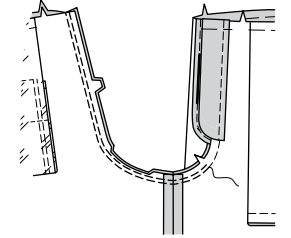


INNER LEG AND CROTCH SEAM

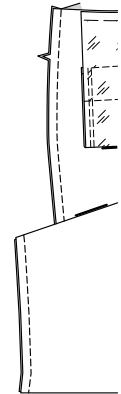
22. Stitch front and back together at inner leg edges.



23. Stitch remainder of crotch seam to notch in front. Stitch again 1/4"(1cm) away in seam allowance along curve, as shown. Trim close to second stitching.

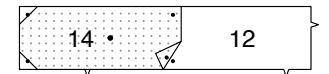


24. With **RIGHT** sides together, stitch front to back at side seams.

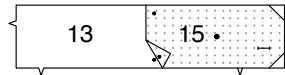


WAISTBAND

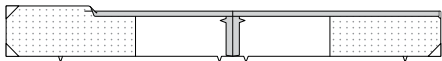
25. Pin **RIGHT FRONT INTERFACING** (14) to front edge of **RIGHT WAISTBAND** (12), having raw edges even. Fuse in place following manufacturer's directions. Trim away corners of interfacing, as shown.



26. Pin LEFT FRONT INTERFACING (15) to front edge of LEFT WAISTBAND (13), having raw edges even. Fuse in place following manufacturer's directions. Trim away corners of interfacing, as shown.



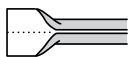
27. With RIGHT sides together, stitch center back seam of waistband sections. Press under 1/2" (1.3cm) on long unmarked edge of waistband.



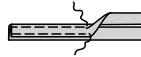
28. Fold CARRIER (11) in half, lengthwise with WRONG sides together. Press, setting in a crease.



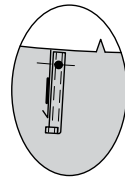
29. Open out long edges of carrier and turn them to WRONG side so that they meet at the crease. Press.



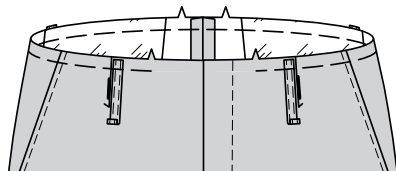
30. Fold carrier in half lengthwise, bringing pressed edges together. Stitch close to both long edges.



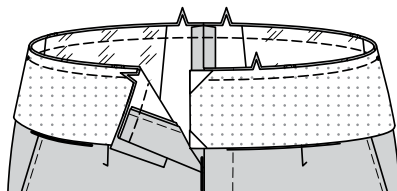
31. Cut five carriers each measuring 3-5/8" (9.2cm) long. Press under 1/4" (6mm) on one end of carriers. On OUTSIDE, pin carriers to upper edge of pants, matching raw edges and centering over large dots. Baste.



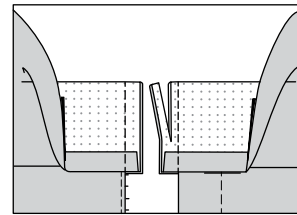
32. STAYSTITCH upper edge of pants between front notches.



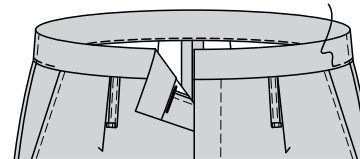
33. With RIGHT sides together, pin waistband to upper edge of pants, matching notches and center back seams, placing small dots at side seams. Baste. Stitch.



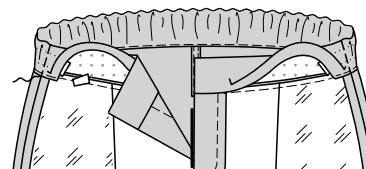
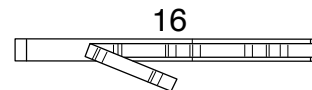
34. Press seam toward waistband, pressing waistband out. Fold front ends of waistband with RIGHT sides together. Stitch across ends of band, being careful not to catch in zipper teeth, as shown. Trim seams.



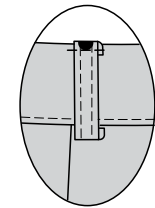
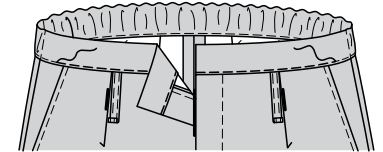
35. Turn ends RIGHT side out; press. On INSIDE, pin pressed edge of waistband over seam. EDGESTITCH back edge of waistband ending 1" (2.5cm) beyond stitching line on each side seam, as shown.



36. Cut a piece of elastic the measurement of GUIDE FOR ELASTIC (16). Attach a safety pin to one end of elastic. Insert elastic through opening in casing, matching seam allowance to stitching line, having ends extend 5/8" (1.5cm) beyond stitching lines, as shown. Stitch along stitching line through all thicknesses, securing elastic. Trim away ends of elastic close to stitching.

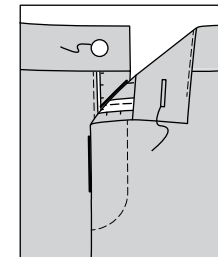


37. Pin remaining pressed edge of waist band over seam. EDGESTITCH lower edge of waistband connecting with previous stitching, being careful not to catch in elastic while stitching. Press up free ends of carrier, matching large dots. EDGESTITCH in place.

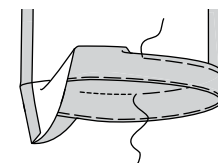


FINISHING

38. Hand-sew button to RIGHT waistband at marking. Make buttonhole in LEFT front waistband at marking.



39. Turn up pants hem. Baste close to fold. Turn in 1/4" (6mm) on raw edge. Baste hem in place close to upper edge. Press. TOPSTITCH hem along upper basting.





Congrats!

You've completed your sewing adventure

**SHARE
YOUR** LOOK



Post your pattern and tag us
[@simplicity_creative_group](#) and [#knowMepatterns](#)
for a chance to be featured on our social media.

Look for more PDF patterns at [simplicity.com](#)

Have a question or need help with your sewing project call us at
1-800-782-0323

