



BEAUTE' J'ADORE
knowME
BY mimi g

ME2103



A

B

Scan QR code
for a Sew-Along
video tutorial.



@beautejadore

Designed and
printed in USA

MISSES' LINED COAT IN TWO LENGTHS											Average
Suggested Fabrics: Gabardine, Melton, Tweed, Wool and Wool Blends. Lining: Cotton Blends, Polyester Blends. Interfacing: Lightweight Fusible.											
Notions: A,B: Four ¾" (2cm) buttons, pair of ½" (1.3cm) shoulder pads.											
Sizes	8	10	12	14	16	18	20	22	24	26	
European	34	36	38	40	42	44	46	48	50	52	
BODY MEASUREMENTS: Select pattern size based on body measurements											
Bust	31½	32½	34	36	38	40	42	44	46	48	Ins.
Waist	24	25	26½	28	30	32	34	37	39	41	"
Hip-9" below waist	33½	34½	36	38	40	42	44	46	48	50	"
Back-neck to waist	15¾	16	16¼	16½	16¾	17	17¼	17½	17¾	18	"
Coat A	45**	3%	3%	3%	3%	3%	4%	4%	4%	4%	Yds.
	60**	3	3	3	3	3	3	3%	3%	3%	"
Lining	45***	2%	2%	2%	2%	3%	3%	3%	3%	3%	"
Interfacing	20"	4%	4%	4%	4%	4%	4%	4%	4%	4%	"
Coat B	45**	5	5	5	5½	5%	5%	5%	5½	5½	Yds.
	60**	3%	3%	3%	3%	3%	4%	4%	4%	4%	"
Lining	45***	3%	3%	3%	4%	4%	4%	4%	4%	4%	"
Interfacing	20"	6½	6½	6½	6½	6%	6%	6%	6%	6%	"
FINISHED GARMENT MEASUREMENTS (Includes Design and Wearing Ease)											
A,B Bust	39	40	41½	43½	45½	47½	49½	51½	53½	55½	Ins.
A,B Waist	28¾	29¾	31¼	33¼	35¼	37¼	39¼	41¼	43¼	45¼	"
A,B Hip	39½	40½	42	44	46	48	50	52	54	56	"
Width, lower edge											
Coat A	45½	46½	48	50	52	54	56	58	60	62	Ins.
Coat B	50½	51½	53	55	57	59	61	63	65	67	"
Finished back length from base of neck											
Coat A	39¾	40	40¾	40¾	40¾	41	41¾	41¾	41¾	42	Ins.
Coat B	56¾	57	57¼	57½	57¾	58	58¾	58¾	58¾	59	"
*with nap **without nap											

*with nap **without nap

Moins Facile

MANTEAU DOUBLÉ EN DEUX LONGUEURS POUR JEUNES FEMMES

Tissus Conseillés: Gabardine, Melton, Tweed, Laine et Lainages. Doubleure: Cotonnades, Mélanges de polyester. Entoilage: Thermocollant léger.

Merçerie: A,B: 4 boutons de 2cm, paire d'épaulettes de 1.3cm.

Tailles	8	10	12	14	16	18	20	22	24	26	
Françaises	36	38	40	42	44	46	48	50	52	54	
Européen	34	36	38	40	42	44	46	48	50	52	

MESURES DU CORPS: Choisissez la taille du patron basée sur les mesures du corps

Poitrine	80	83	87	92	97	102	107	112	117	122	cm
Taille	61	64	67	71	76	81	87	94	99	104	"

Hanches (23cm au-dessous de la taille)

	85	88	92	97	102	107	112	117	122	127	cm
Dos du cou à la taille	40	40.5	41.5	42	42.5	43	44	44.5	45	46	"

Manteau A

115cm*	3.3	3.3	3.3	3.4	3.4	3.8	3.8	3.9	3.9	3.9	m
150cm*	2.6	2.7	2.7	2.7	2.7	2.7	2.7	2.9	2.9	3.0	"

Doubleure

115cm**	2.6	2.6	2.6	2.6	3.0	3.1	3.1	3.1	3.1	3.1	"
---------	-----	-----	-----	-----	-----	-----	-----	-----	-----	-----	---

Entoilage

51cm	4.2	4.2	4.2	4.2	4.2	4.2	4.3	4.3	4.3	4.3	"
------	-----	-----	-----	-----	-----	-----	-----	-----	-----	-----	---

Manteau B

115cm*	4.6	4.6	4.6	4.6	4.9	4.9	4.9	4.9	5.0	5.0	m
150cm*	3.2	3.3	3.3	3.3	3.3	3.9	3.9	3.9	3.9	3.9	"

Doubleure

115cm**	3.3	3.3	3.4	3.8	4.3	4.3	4.3	4.3	4.5	4.5	"
---------	-----	-----	-----	-----	-----	-----	-----	-----	-----	-----	---

Entoilage

51cm	5.9	5.9	5.9	5.9	5.9	6.1	6.1	6.1	6.1	6.1	"
------	-----	-----	-----	-----	-----	-----	-----	-----	-----	-----	---

MESURES DES VÊTEMENTS FINI (Motif et aisance de port compris)

A,B Poitrine	99	102	105	110	116	121	126	131	136	141	cm
A,B Taille	73	76	79	84	90	95	100	105	110	115	"
A,B Hanches	100	103	107	112	117	122	127	132	137	142	"

Largeur à l'ourlet

Manteau A	116	118	122	127	132	137	142	147	152	157	cm
Manteau B	128	131	135	140	145	150	155	160	165	170	"

Longueur finie – dos, votre nuque à l'ourlet

Manteau A	101	102	102	103	104	104	105	105	106	107	cm
Manteau B	144	145	145	146	147	147	148	149	149	150	"

*avec sens **sans sens

*avec sens **sans sens



A



B



A

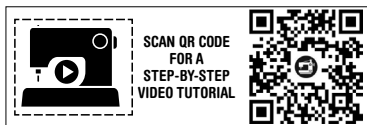
B

ME2103

knowME
BY mimi.g

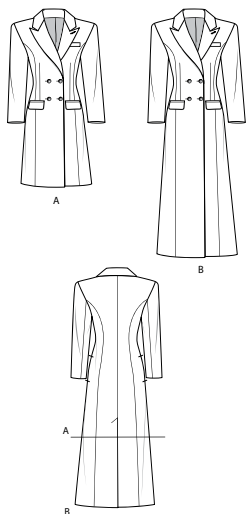
Page 1 of 4

1-800-782-0323

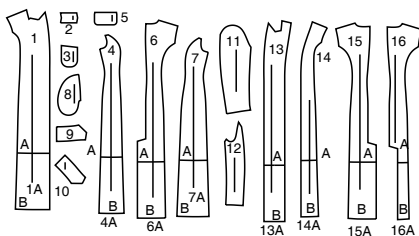


SCAN QR CODE
FOR A
STEP-BY-STEP
VIDEO TUTORIAL

@beautejadore

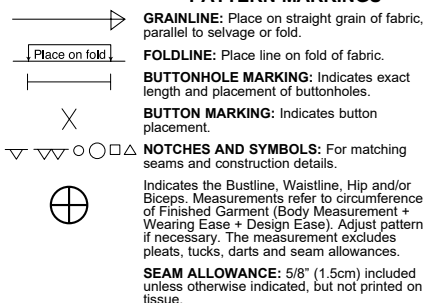


16 PATTERN PIECES

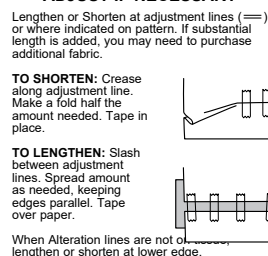


- 1(1A) Front
2 Welt-A,B
3 Upper Pocket-A,B
4(4A) Side Front
5 Flap-A,B
6(6A) Back
7(7A) Side Back
8 Pocket-A,B
9 Upper Collar-A,B
10 Under Collar-A,B
11 Upper Sleeve-A,B
12 Undersleeve-A,B
13(13A) Front Facing
14(14A) Front Lining
15(15A) Right Back Lining
16(16A) Left Back Lining

PATTERN MARKINGS



ADJUST IF NECESSARY



CUTTING AND MARKING

SHRINK FABRIC if not labeled pre-shrunk. Press.

CIRCLE LAYOUT for View, Size, Fabric Width.

Use **WITH NAP** layout for fabrics with one-way designs, nap, pile or surface shading. Because most knits have surface shading, a with nap layout is used.

For **DOUBLE THICKNESS (WITH FOLD)** - fold fabric with right sides together.

*** DOUBLE THICKNESS (WITHOUT FOLD)** - For fabrics with nap, fold fabric crosswise, right sides together. Mark as shown. Cut along crosswise fold of fabric (A). Turn upper layer 180° so arrows go in same direction and place over lower layer, right sides together (B).

For **SINGLE THICKNESS** - place fabric right side up. (For Fur Pile fabrics, place pile side down.)

★ Cut other pieces first, allowing enough fabric to cut this piece. Open fabric. For "Cut 1" pieces, cut piece once on single layer of fabric with piece face up on right side of fabric.

Pattern may have cutting lines for several sizes. Select the proper cutting line or pattern pieces for your size.

Before **CUTTING** place all pieces on fabric according to layout. Pin. (Layouts show approximate position of pattern pieces; position may vary according to your pattern size.) Cut **ACCURATELY**, cutting notches outward.

Before removing pattern, **TRANSFER MARKINGS** and lines of construction to Wrong Side of fabric, using the Pin and Chalk Pencil method or Tracing Paper and Dressmaker Wheel. Markings needed on right side of fabric should be thread traced.

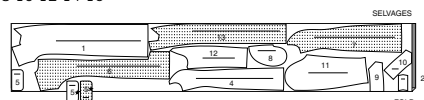
NOTE: Broken-line boxes (a| b| c|) in layouts represent pieces cut by measurements provided.

CUTTING LAYOUTS

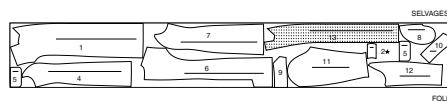
COAT A

USE PIECES 1 2 4 5 6 7 8 9 10 11 12 13

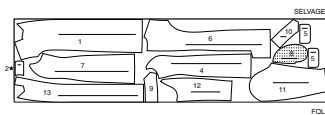
45" (115cm)
WITH NAP
SIZES 8 10 12 14 16



45" (115cm)
WITH NAP
SIZES 18 20 22 24 26



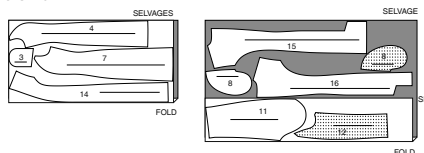
60" (150cm)
WITH NAP
ALL SIZES



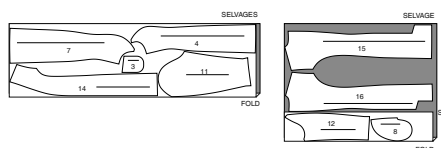
LINING A

USE PIECES 3 4 7 8 11 12 14 15 16

45" (115cm)
WITHOUT NAP
SIZES 8 10 12 14



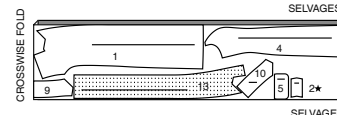
45" (115cm)
WITHOUT NAP
SIZES 16 18 20 22 24 26



INTERFACING A

USE PIECES 1 2 4 5 9 10 13

20" (51cm)
ALL SIZES

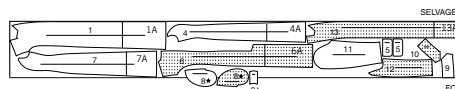


COAT B

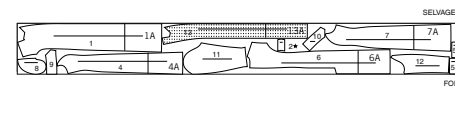
USE PIECES 1(1A) 2 4(4A) 5 6(6A) 7(7A) 8 9 10 11 12 13(13A)

NOTE: Before cutting fabric join piece in parenthesis to corresponding piece following instructions on tissue pattern.

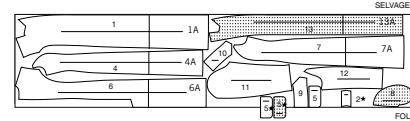
45" (115cm)
WITH NAP
SIZES 8 10 12 14



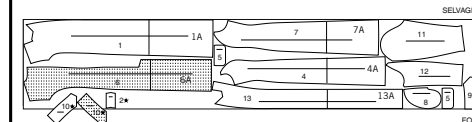
45" (115cm)
WITH NAP
SIZES 16 18 20 22 24 26



60" (150cm)
WITH NAP
SIZES 8 10 12 14 16



60" (150cm)
WITH NAP
SIZES 18 20 22 24 26

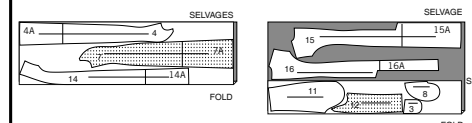


LINING B

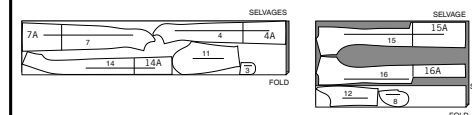
USE PIECES 3 4(4A) 7(7A) 8 11 12 14(14A) 15(15A) 16(16A)

NOTE: Before cutting fabric join piece in parenthesis to corresponding piece following instructions on tissue pattern.

45" (115cm)
WITH NAP
SIZES 8 10 12 14



45" (115cm)
WITH NAP
SIZES 16 18 20 22 24 26

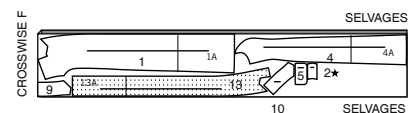


INTERFACING B

USE PIECES 1(1A) 2 4(4A) 5 9 10 13(13A)

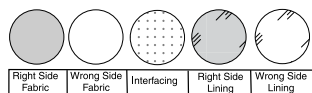
NOTE: Before cutting fabric join piece in parenthesis to corresponding piece following instructions on tissue pattern.

20" (51cm)
ALL SIZES



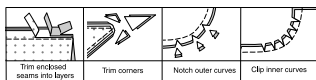
SEWING INFORMATION

FABRIC KEY



SEAM ALLOWANCES

Use 5/8" (1.5cm) seam allowances unless otherwise indicated.



PIN AND FIT

Pin or baste seams, **RIGHT SIDE TOGETHER**, matching notches. Fit garment before stitching major seams.

PRESS

Press seam allowances flat; then open unless otherwise stated. Clip where necessary so they lie flat.

GLOSSARY

EASESTITCH - Stitch along seamline, using long machine stitches. Pull thread ends when adjusting to fit.

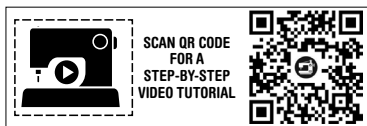
NOTE: For sleeve caps, make a second row of long machine stitches 1/4" (6mm) away in seam allowance for more control.

EDGESTITCH - Stitch close to finished edge or seam.

REINFORCE - Stitch along seamline where indicated in sewing instructions, using small machine stitches.

SLIPSTITCH - Slide needle through a folded edge, then pick up a thread of underneath fabric.

STAYSTITCH - Stitch 1/8" (3mm) from seamline in seam allowance (usually 1/2" (13mm) from raw edge).



@beautejadore

PATTERN PIECES WILL BE IDENTIFIED BY NUMBERS THE FIRST TIME THEY ARE USED.

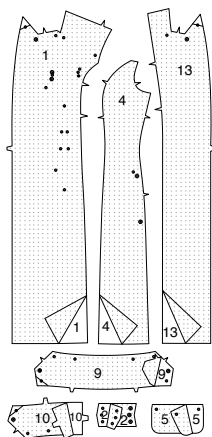
STITCH SEAMS WITH RIGHT SIDES TOGETHER UNLESS OTHERWISE STATED.

NOTE: Under each sub-heading, the first view will be illustrated, unless otherwise illustrated.

COAT A, B

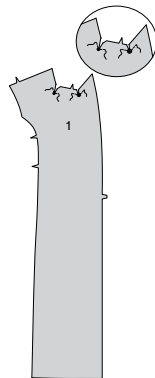
INTERFACING

1. Trim corners of **INTERFACING**, as shown. Fuse interfacing to wrong side of each matching **FABRIC** section, following manufacturer's instructions.

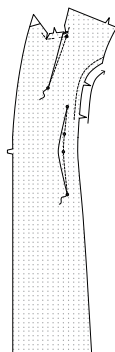


FRONT

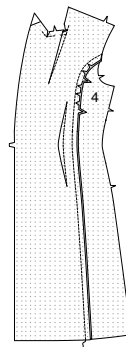
2. **REINFORCE** FRONT (1) at neck edge, through large dot. Clip to large dot. **REINFORCE** inner corner of neck edge of front, pivoting at small dot. Clip diagonally to small dot.



3. Stitch dart at neck edge. Press fold toward front. Stitch waist dart in front. Press fold toward center. **STAYSTITCH** side front edge of front above lower notch in direction of arrows.

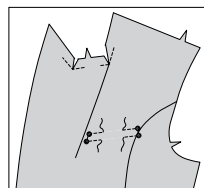


4. With **RIGHT** sides together, pin **SIDE FRONT** (4) to front at side front seam, clipping front where necessary. Stitch. Press seam toward side.

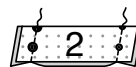


LEFT WELT AND POCKET

5. **REINFORCE** left front along corners of stitching lines, pivoting at small dots.



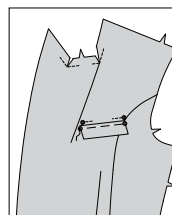
6. With **RIGHT** sides together, fold **WELT** (2) in half lengthwise, matching dots. Stitch ends; trim seams.



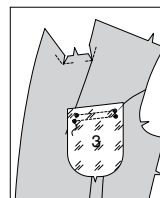
7. Turn welt **RIGHT** side out; press. Baste raw edges together. Trim seam to a scant 1/4" (6mm).



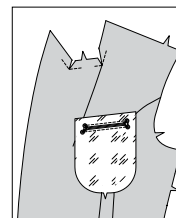
8. Pin welt to left front, placing 1/4" (6mm) seamline along lower stitching line, matching small and large dots. Baste.



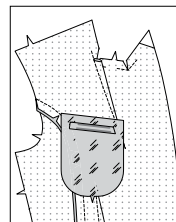
9. With **RIGHT** sides together, pin one **UPPER POCKET** (3) section to left front (over welt), matching stitching lines, and small and large dots. Stitch along stitching lines between small and large dots.



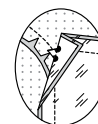
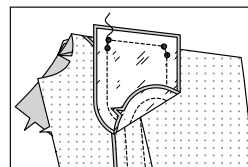
10. Slash left front along slash line between stitching, clipping diagonally to small and large dots, being careful not to cut welt.



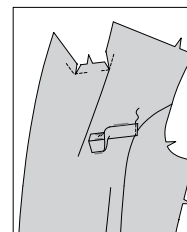
11. Turn pockets and triangular ends to inside, turning welt up; press.



12. With **RIGHT** sides together, pin remaining upper pocket section to pocket. Stitch pocket edges together below upper small dots, matching notches, catching triangular ends in stitching and keeping left front free. Fold down left front and stitch upper edges of upper pocket together along upper stitching line, keeping front free.



13. Press welt up. **EDGESTITCH** side edges of welt, as shown.

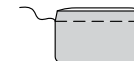


FLAPS

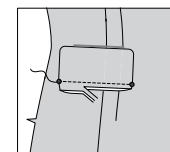
14. For each flap, pin one uninterfaced **FLAP** (5) section to one interfaced flap section, matching dots. Stitch, leaving upper edge free; trim seams.



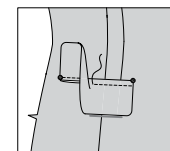
15. Turn right side out; press. Baste raw edges together.



16. Pin flap (interfaced side up) to front and side front, placing seamline along flap line, matching small dots. Baste. Stitch along seamline between small dots. Trim flap seam to a scant 1/4" (6mm), being careful not to cut front/side front.

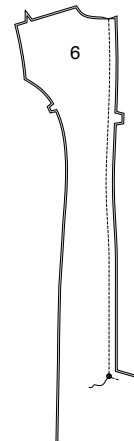
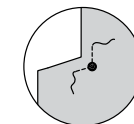


17. Turn flap down; press. **TOPSTITCH** upper edge of flap, encasing trimmed edge.

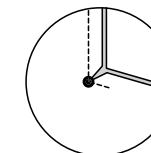


BACK

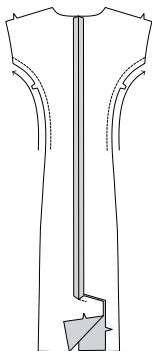
18. **REINFORCE** lower corner of **BACK** (6) through large dot, as shown. Stitch center back seam from upper edge to large dot.



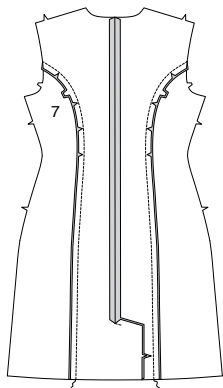
19. Clip seam allowance on **RIGHT** back to large dot.



20. Press seam allowances open, pressing extensions toward **LEFT** back, pressing under **LEFT** back extension on foldline. **STAYSTITCH** side back edges of back above waist edge, in direction of arrows.



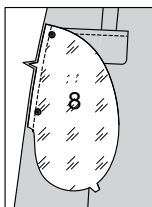
21. Pin each **SIDE BACK (7)** section to back at side back edges, clipping back where necessary. Stitch. Press seams toward side.



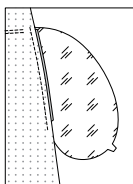
POCKETS AND REMAINING SEAMS

NOTE: Apply pockets to front and back as follows:

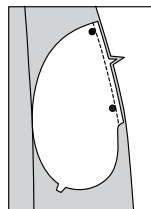
22. With **RIGHT** sides together, pin **POCKET (8)** sections (lining) to side front, matching large dots, having raw edges even. Stitch in 3/8" (1cm) seam.



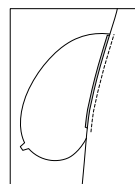
23. Press seam toward pocket lining, pressing pocket out.



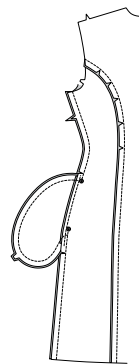
24. With **RIGHT** sides together, pin **POCKET** sections (fabric) to side back, matching large dots, having raw edges even. Stitch in 3/8" (1cm) seam.



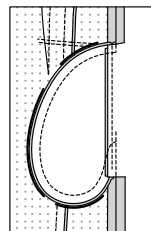
25. Press seam toward pocket, pressing pocket out.



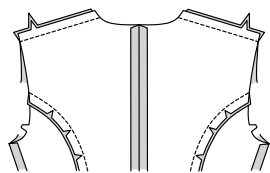
26. With **RIGHT** sides together, pin front to back at sides, matching large dots. Stitch sides, leaving open between large dots. Stitch pocket edges together between side seams. Clip coat back seam allowance at ends of pocket, as shown. Press seam open above and below clips.



27. Press pocket toward front.

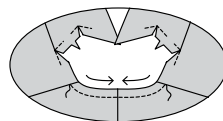


28. Stitch back to front at shoulders.

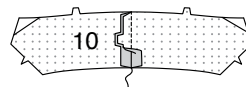


UNDER COLLAR

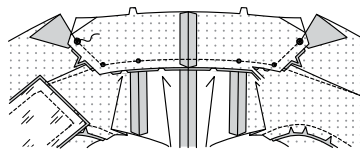
29. STAYSTITCH neck edge of coat back between shoulder seams, in direction of arrows.



30. Stitch center back seam of **UNDER COLLAR (10)**, matching notches.

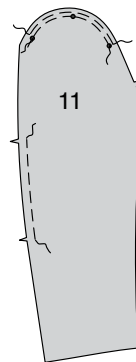


31. With **RIGHT** sides together, pin under collar to neck edge, matching center backs, large dots, small center dots to shoulder seams, clipping coat neck edge where necessary. Stitch between large dots, pivoting at small dots; trim seam.

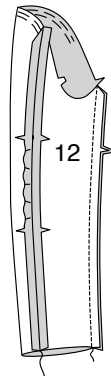


SLEEVE

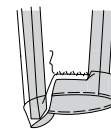
32. EASESTITCH cap of **UPPER SLEEVE (11)** between outer small dots. **EASESTITCH** back edge of upper sleeve between notches.



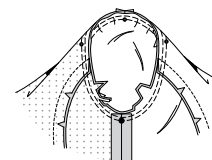
33. With **RIGHT** sides together, pin upper sleeve to **UNDER SLEEVE (12)** at back edge. Adjust ease; baste. Stitch. Stitch upper sleeve to under sleeve at front edge.



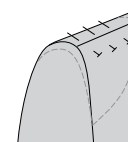
34. Turn up 1-1/2" (3.8cm) hem on lower edge of sleeve. Baste close to fold. Sew hem in place; press.



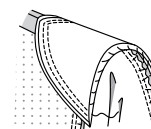
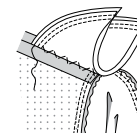
35. With **RIGHT** sides together, pin sleeve into armhole with center small dot at shoulder seam and large dot at side seam, matching notches and remaining small dots. Adjust ease; baste. Stitch. Stitch again 1/4" (6mm) away in seam allowance. Trim close to second stitching. Turn seam toward sleeve.



36. Try on coat for shoulder pad placement. Pin pad to coat, extending outer edge about 5/8" (1.5cm) beyond armhole seam.

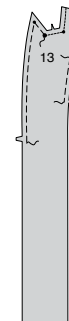


37. Sew pad to shoulder seam allowance; tack ends to armhole seam.



FACING AND LINING

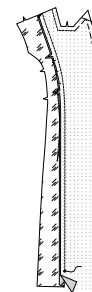
38. REINFORCE neck edge of front **FACING (13)**, pivoting at inner dots, as shown. **EASESTITCH** upper and front edge of front facing. **EASESTITCH** side front edge of front facing between notches.



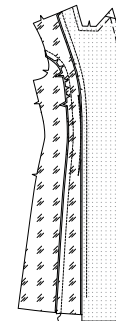
39. Stitch dart in **FRONT LINING (14)**. Press fold toward front edge. **STAYSTITCH** side edge of front lining above lower notch, in direction of arrows.



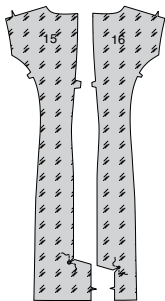
40. Pin front lining to front facing, matching notches and small dots. Adjust ease. Stitch, leaving free below dots. Press seams toward lining.



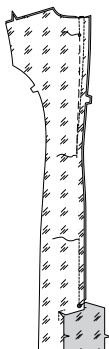
41. Trim away 1" (2.5cm) from lower edge of side front **LINING (4)**. Pin side front lining to front lining, matching notches, clipping front lining to staystitching, as needed. Stitch. Turn seam toward side front lining. Press.



42. REINFORCE inner corner of RIGHT BACK LINING (15) and LEFT BACK LINING (16), pivoting at large and small dots. Clip diagonally to dots.



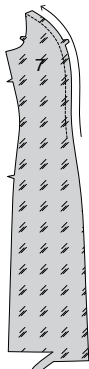
43. With RIGHT sides together, pin back lining sections, matching notches and large and small dots. Stitch from upper edge to large dot, leaving an opening for turning. Do not press seam open. To make pleat in back lining, baste center back pleat lines together. Stitch along stitching lines above small dot.



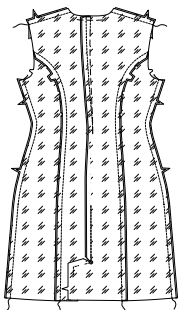
44. Press pleat toward right back. Baste across upper edge.



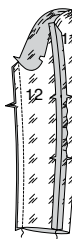
45. Trim away 1"(2.5cm) on lower edge of side back LINING (7) sections. **STAYSTITCH** side back edge of side back lining above waist edge, in direction of arrows.



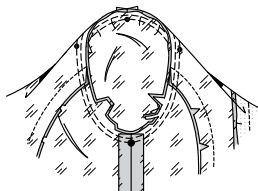
46. Pin each side back lining section to back at side back edges, clipping back where necessary. Stitch. Press seams toward side. Stitch back lining to front lining at shoulders and sides.



47. Trim away 1"(2.5cm) on lower edge of upper sleeve LINING (11) and lower sleeve LINING (12). Prepare sleeve lining in the same manner as sleeve, disregarding hem.

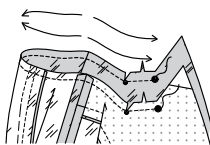


48. With RIGHT sides together, pin sleeve lining into armhole with center small dot at shoulder seam and large dot at side seam, matching notches and remaining small dots. Adjust ease; baste. Stitch. Stitch again 1/4"(6mm) away in seam allowance. Trim close to second stitching. Turn seam toward sleeve lining.



UPPER COLLAR, FACING AND LINING

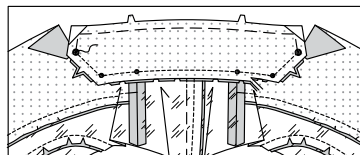
49. STAYSTITCH facing and lining neck edge between large dots, in direction of arrows, pivoting at small dots.



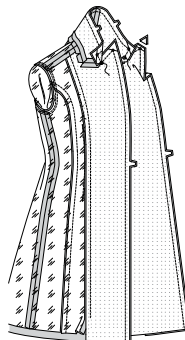
50. EASESTITCH UPPER COLLAR (9) between large dots.



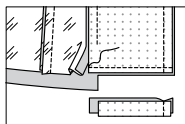
51. With RIGHT sides together, pin upper collar to neck edge of facing and lining, matching center backs, small center dots to shoulder seams, clipping coat neck edge where necessary and to large and small dots on fronts. Stitch between large dots, pivoting at small dots; trim seam.



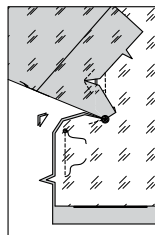
52. With RIGHT sides together, pin upper collar and facing/lining to under collar and coat, matching center backs and dots. Adjust ease. Stitch front opening and lapel edges to large dot. Stitch collar edges together between large dots; trim seams.



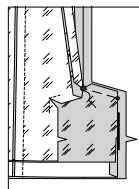
53. Stitch across facing 1-1/2"(3.8cm) above lower edge. Trim, as shown.



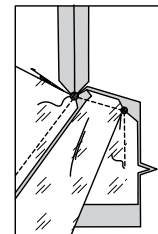
54. With RIGHT sides together, pin back vent edges of right back lining and right back, matching small and large dots. Stitch RIGHT back vent edges together between small dot and notch. Trim corner as shown.



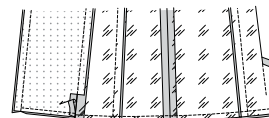
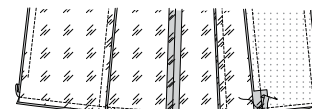
55. Turn right side of vent, RIGHT side out. Pin upper edges of right back and lining vents to upper edge of left back extension, matching dots. Baste between large and small dots, keeping coat and left lining free.



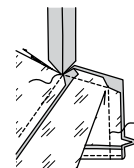
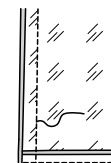
56. With RIGHT sides together, pin the back vent edges of left back lining to the left back coat extension, over upper edge of right vent, matching small and large dots. Stitch, keeping finished edge of right back vent free.



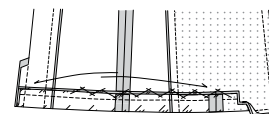
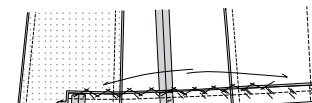
57. With RIGHT sides together, pin lower edges of coat and lining together, matching seams. Stitch RIGHT coat and lining together 1/2"(1.3cm) from raw lower edges between inner front facing seam and raw back vent edges, as shown. Stitch LEFT coat and lining together 1/2"(1.3cm) from raw lower edges between inner front facing seam and vent seam. Since the coat is 1"(2.5cm) longer than the lining, folds in the coat will develop at this point in the construction process.



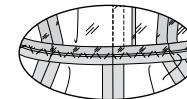
58. Turn up hem allowance along hem line at right and left vent. Stitch remaining back vent edges together, connecting to previous stitching. Trim.



59. With the WRONG side of coat facing you, turn up hem allowance along 1-1/2"(3.8cm) hem line. **CATCH STITCH** coat hem in place on right and left sides, between inner facing seam and 4"(10cm) from vent. Turn coat RIGHT side out through opening; press.



60. Lift up facing/lining; sew neck seams together loosely by hand.



61. Turn facing and lining down. Slip sleeve lining in place. **SLIPSTITCH** opening closed. Finish slipstitching front edges of lining to front facings. Turn in 5/8"(1.5cm) on lower edge of sleeve lining; place folded edge 5/8"(1.5cm) below raw edge of hem. **SLIPSTITCH.** Note: A pleat will form at lower edge for wearing ease.

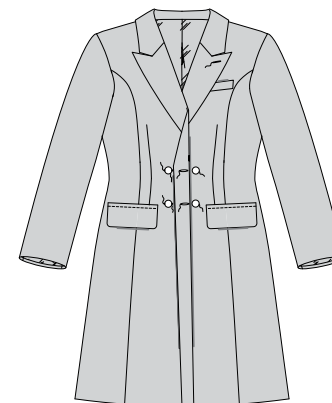


62. Tack sleeve at shoulders and underarms.



BUTTONHOLES AND BUTTONS

63. Make buttonholes in right front at markings. Lap right front over left, matching centers. Using buttonholes as guides, make button markings on left front. Sew buttons at markings on left and front. Make buttonhole in left front lapel at marking. Do not cut open.





Congrats!

You've completed your sewing adventure

SHARE YOUR LOOK



Post your pattern and tag us
[@simplicity_creative_group](#) and [#knowMepatterns](#)
for a chance to be featured on our social media.

Look for more PDF patterns at [simplicity.com](https://www.simplicity.com)

Have a question or need help with your sewing project call us at
1-800-782-0323



KnowMe ©2024 a division of IG Design Group Americas Inc. • Atlanta, GA 30342 USA www.thedesigngroup.com • All Rights Reserved. www.mccall.com • Made in the U.S.A. Fabriqué aux États-Unis.
To be used for individual private home use only and not for commercial or manufacturing purposes. • A usage privé seulement et non à des fins commerciales ou de production en série. • Para uso privado solamente, no se puede utilizar con propósitos de comercialización o de producción en serie.